



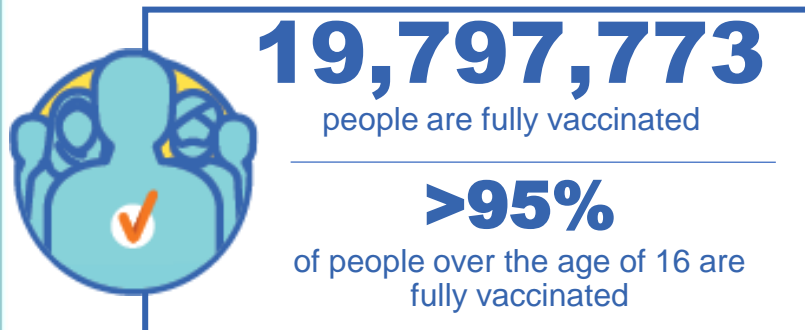
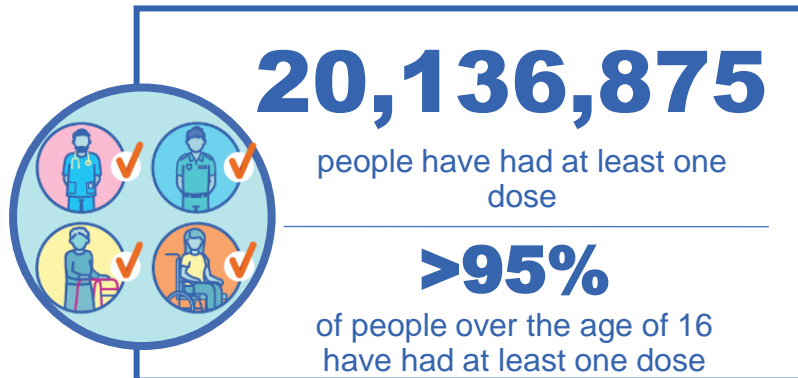
Australian Government
Operation COVID Shield

COVID-19 Vaccine Roll-out

17 July 2022

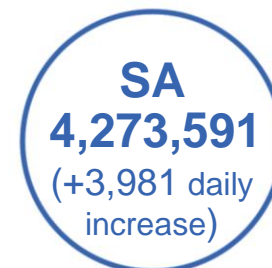
Data as at:
16 Jul 2022

Total vaccine doses



61,234,761 total vaccine
doses administered nationally as at 16 July

+49,996 recorded in the last 24 hours



*Administration state breakdown indicates state in which a vaccine was administered

**Overall dose count includes instances of more than three doses per person in a small number of cases.

Source: Australian Immunisation Register

Booster Vaccinations

Australia's COVID-19
Vaccine Roadmap

Data as at:
16 Jul 2022



229,408

Indigenous people who have
received three or more doses

54.3%

of eligible population (422,638)



167,057

Aged Care Residents who have
received three or more doses##

95.2%

of eligible population (175,388)



195,324

NDIS participants

who have received three or more doses#

75.4%

of eligible population
(259,000)

22,338

NDIS residents

90.0%

of eligible population
(24,000)



13,993,414

total people who have
received three or more doses

+4,314 daily increase

70.9% of eligible population (19,745,689)

	Number of People	Daily Increase	% of Eligible
NSW	4,276,092	1,635	68.5%
VIC	3,725,528	1,066	73.2%
QLD	2,429,068	713	63.8%
WA	1,710,347	295	82.8%
SA	1,004,036	358	74.6%
TAS	320,085	96	73.4%
ACT	275,835	92	79.4%
NT	131,947	14	78.3%

*People may belong to multiple groups and could be represented in the above breakdowns multiple times.

NDIS participants data as at 12 July 2022.

Aged Care Residents data as at 15 July 2022.

Source: Australian Immunisation Register

120,476

doses administered to persons
residing in other territories or with
missing residential information

Fourth Doses

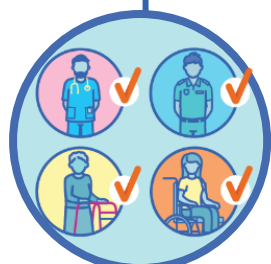
Data as at:
16 Jul 2022

Australia's COVID-19
Vaccine Roadmap



3,111,996 total people (16+) who have received four or more doses

+42,393 daily increase



2,387,918

People aged 65+ who have received
four or more doses

62.3%

of eligible population (3,833,267)



97,679

Aged Care Residents who have
received four or more doses[#]

69.5%

of eligible population (140,528)

	Number of People 16+	Daily Increase
ACT	59,820	1,158
NSW	998,712	13,103
NT	13,217	63
QLD	607,791	6,124
SA	253,481	3,689
TAS	85,604	1,392
VIC	763,818	11,101
WA	314,473	5,603

15,080 doses administered to persons
residing in other territories or with
missing residential information

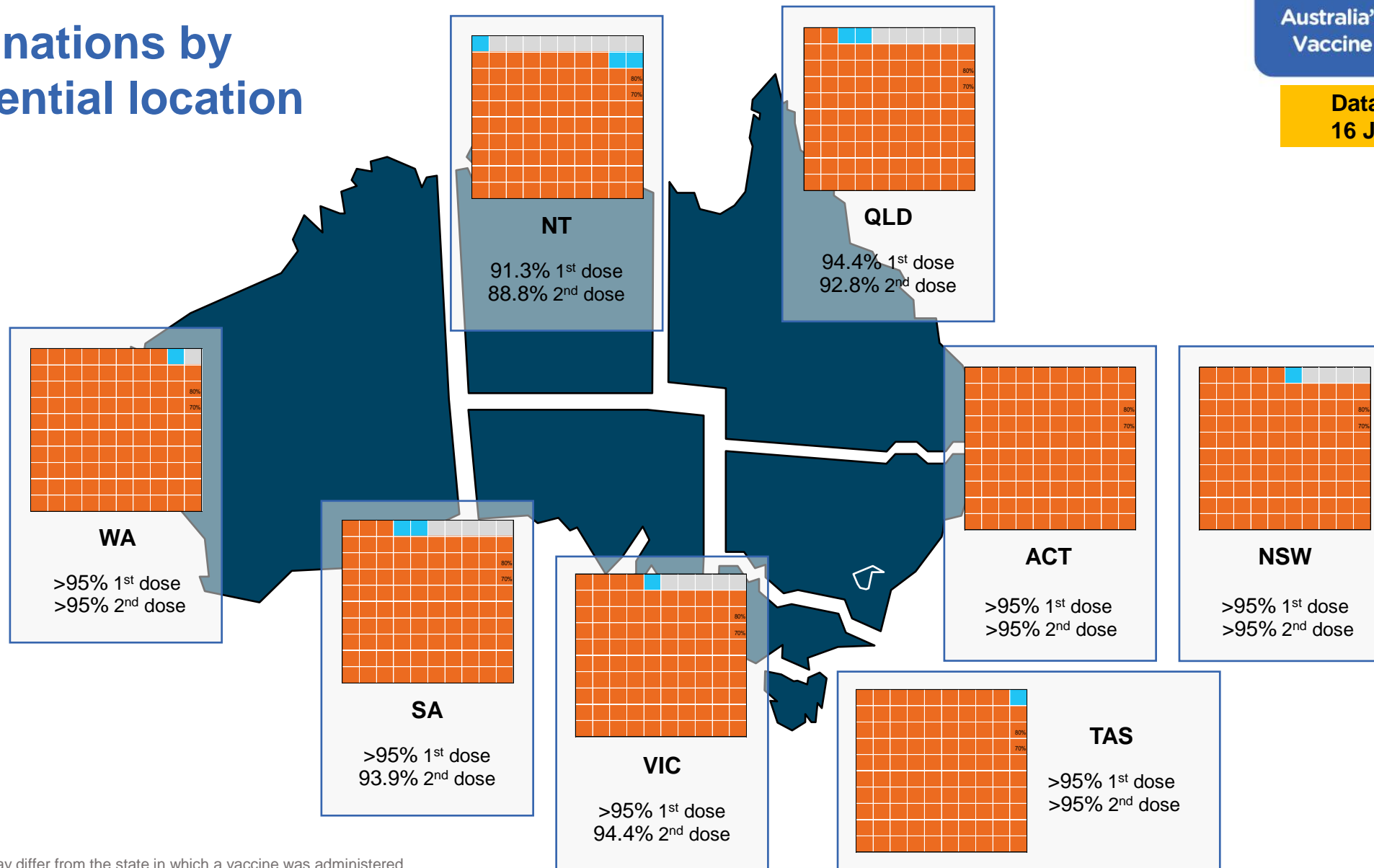
*People become eligible for a fourth dose three months after their third dose. Individuals may belong to multiple groups and could be represented in the above multiple times.
[#]Aged Care Residents data as at 14 July 2022.

Source: Australian Immunisation Register

Vaccinations by residential location

Australia's COVID-19
Vaccine Roadmap

Data as at:
16 Jul 2022



*Residential state may differ from the state in which a vaccine was administered

Commonwealth and Jurisdiction vaccine doses administered

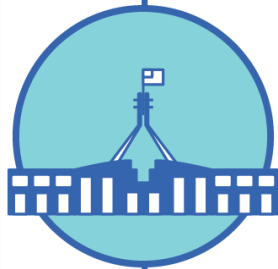
Data as at:
16 Jul 2022



61,234,761 total vaccine
doses administered nationally as at 16 July
+ 49,996 recorded in the last 24 hours



21,396,292
doses administered by state
and territory facilities
+ 9,054
recorded in the last 24 hours



39,838,469
doses administered by
commonwealth facilities
+ 40,942
recorded in the last 24 hours

38,516,204 total vaccine doses
administered in primary care settings
1,322,265 total vaccine doses
administered in aged care and disability
settings

NSW	Jurisdictions	Commonwealth
Cumulative	5,159,465	13,848,728
Daily increase	2,878	13,383

VIC	Jurisdictions	Commonwealth
Cumulative	6,151,104	9,878,498
Daily increase	1,415	11,630

QLD	Jurisdictions	Commonwealth
Cumulative	3,870,553	7,729,182
Daily increase	417	6,747

WA	Jurisdictions	Commonwealth
Cumulative	2,553,771	4,170,337
Daily increase	2,184	4,126

TAS	Jurisdictions	Commonwealth
Cumulative	634,474	757,572
Daily increase	899	686

SA	Jurisdictions	Commonwealth
Cumulative	1,863,070	2,410,521
Daily increase	1,058	2,923

ACT	Jurisdictions	Commonwealth
Cumulative	816,144	791,099
Daily increase	201	1,383

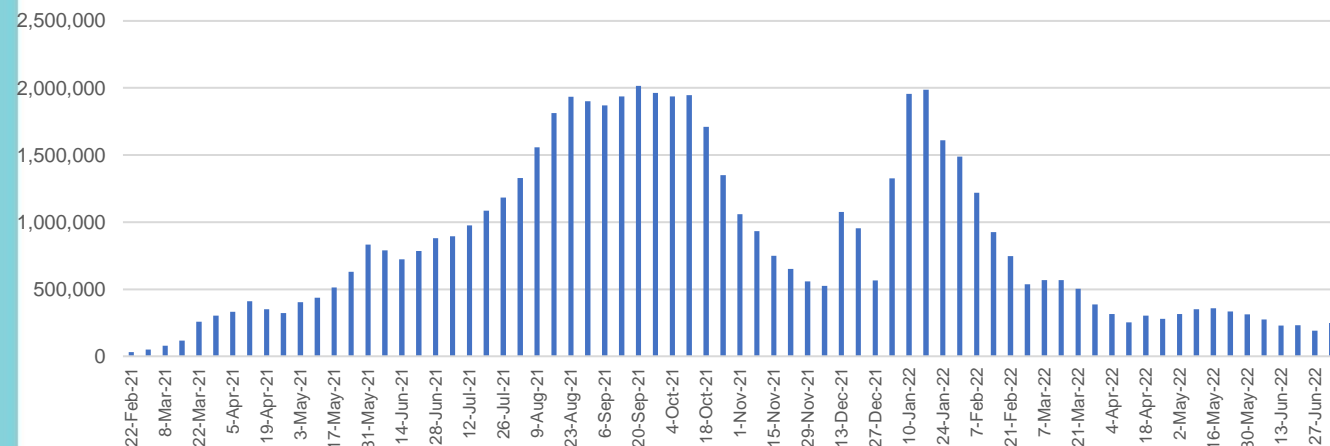
NT	Jurisdictions	Commonwealth
Cumulative	347,711	252,532
Daily increase	<10	64

Vaccine milestone charts

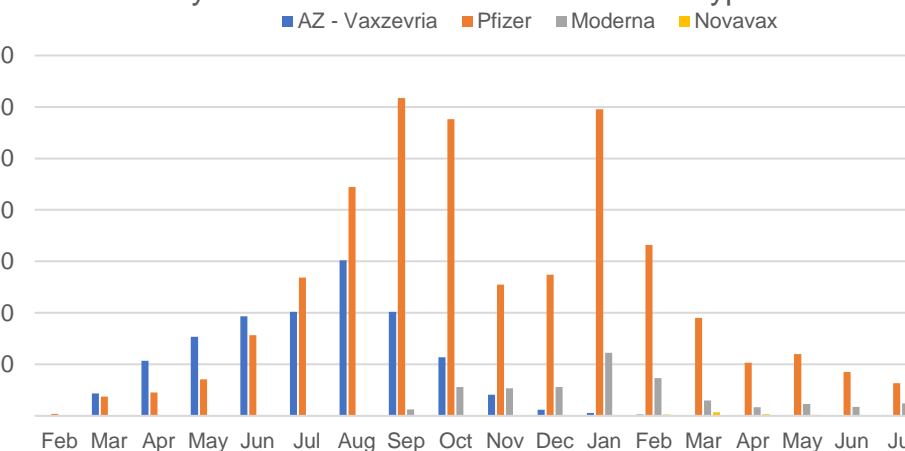
Data as at:
16 Jul 2022

Australia's COVID-19
Vaccine Roadmap

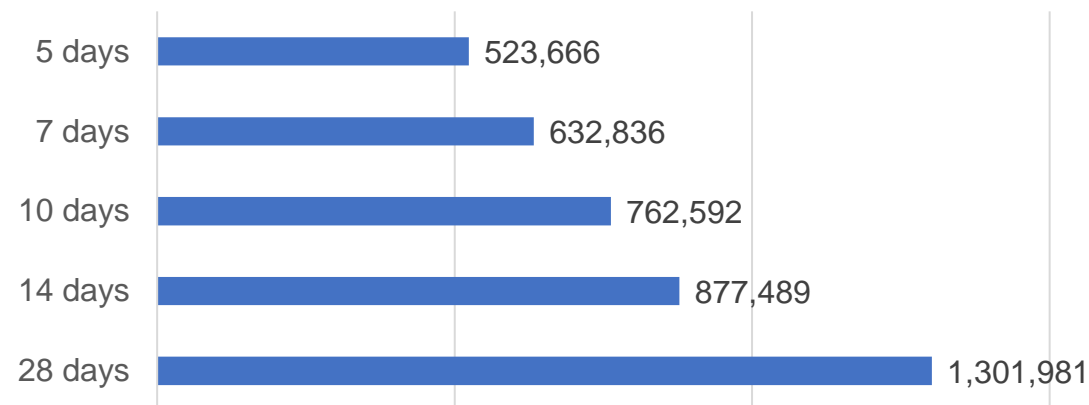
Doses Administered by Week



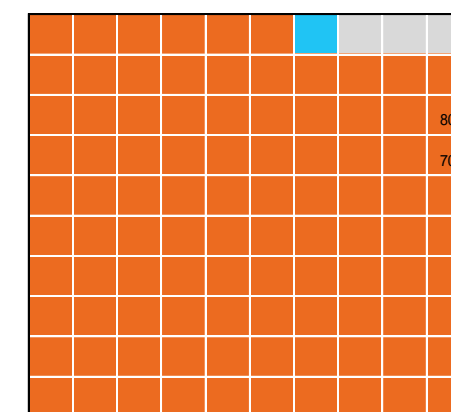
Doses by administration month and vaccine type



Doses Reported



Eligible population percentage coverage



1st dose: > 95.0% 2nd dose: > 95.0%

*Each square represents 1% of the national population. Squares are filled as milestones are achieved.

*Sourced from the Australian Immunisation Register.

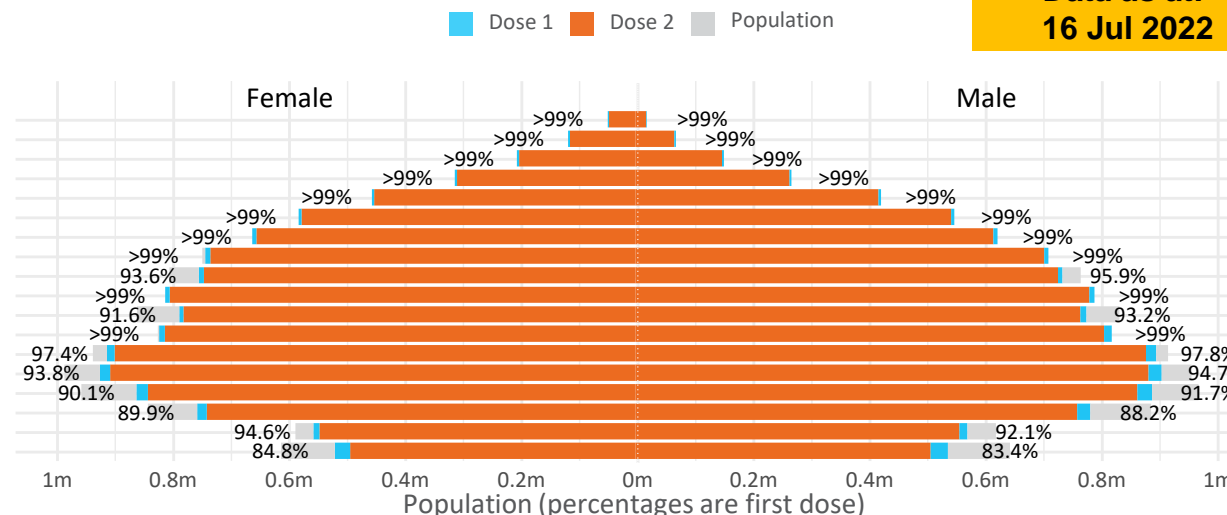
Data as at:
16 Jul 2022

Doses by age and sex

First and second doses by age and sex

	16+	50+	12-15	5-11
Dose 1	97.66% (20,136,875 doses / 20,619,959 people)	>99% (8,948,764 doses / 8,749,703 people)	84.16% (1,046,990 doses / 1,243,990 people)	52.30% (1,190,619 doses / 2,276,638 people)
Dose 2	96.01% (19,797,773 doses / 20,619,959 people)	>99% (8,839,815 doses / 8,749,703 people)	79.64% (990,773 doses / 1,243,990 people)	40.25% (916,304 doses / 2,276,638 people)

Age	Dose 1	Dose 2
95+	66,789 (>99%)	63,310 (>99%)
90-94	183,827 (>99%)	178,327 (>99%)
85-89	353,607 (>99%)	346,865 (>99%)
80-84	575,031 (>99%)	567,845 (>99%)
75-79	870,039 (>99%)	861,432 (>99%)
70-74	1,120,841 (>99%)	1,109,287 (>99%)
65-69	1,274,096 (>99%)	1,258,937 (>99%)
60-64	1,441,024 (>99%)	1,424,204 (>99%)
55-59	1,475,811 (94.9%)	1,458,937 (93.8%)
50-54	1,587,699 (>99%)	1,570,671 (>99%)
45-49	1,550,347 (92.5%)	1,531,893 (91.4%)
40-44	1,628,920 (>99%)	1,604,880 (>99%)
35-39	1,796,021 (97.9%)	1,763,650 (96.1%)
30-34	1,821,176 (94.7%)	1,778,891 (92.5%)
25-29	1,744,121 (91.5%)	1,695,987 (89.0%)
20-24	1,530,615 (89.4%)	1,489,877 (87.0%)
16-19	1,116,911 (93.4%)	1,092,780 (91.4%)
12-15	1,046,990 (84.2%)	990,773 (79.6%)

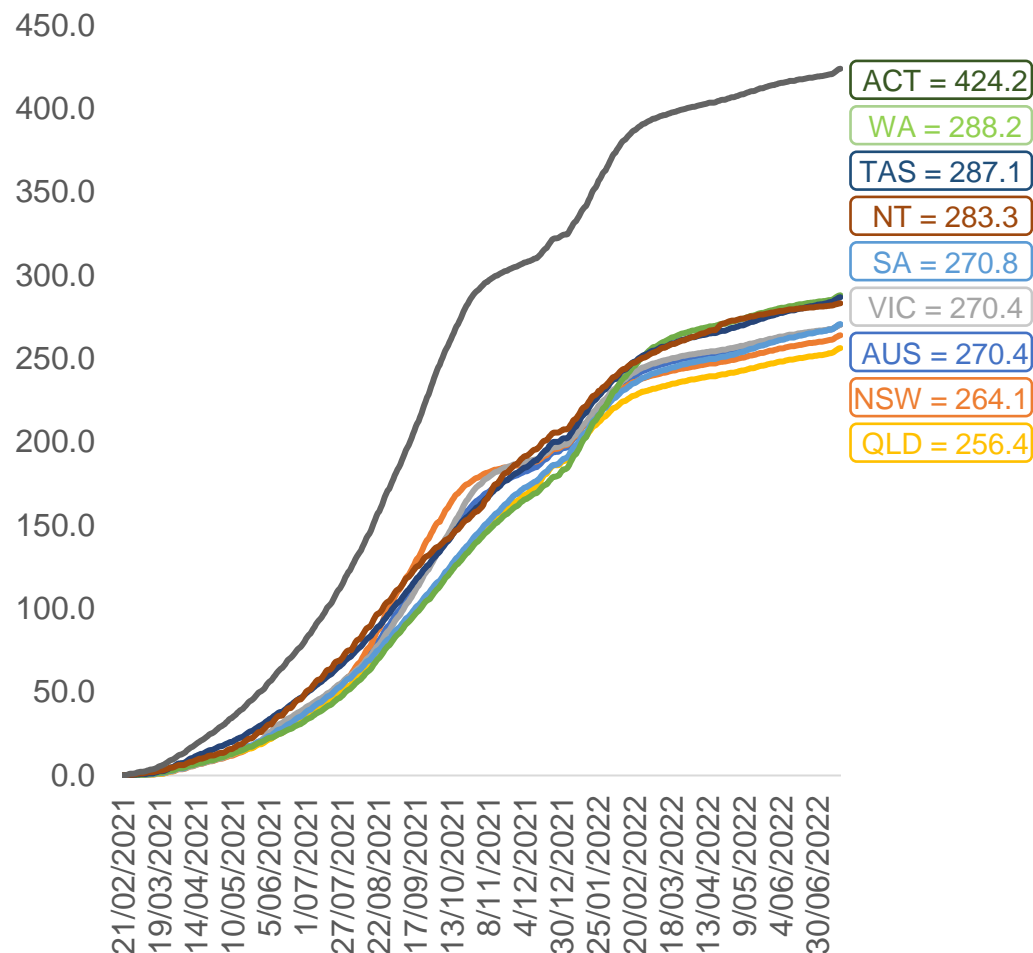


	AUS	ACT	NSW	NT	QLD	SA	TAS	VIC	WA
16 and over - dose 1	20,136,875	353,880	6,351,279	173,981	3,880,472	1,381,218	446,473	5,181,658	2,103,451
16 and over - dose 2	19,797,773	348,096	6,251,868	169,294	3,816,513	1,351,832	437,478	5,102,335	2,072,185
16 and over - population	20,619,959*	344,037	6,565,651	190,571	4,112,707	1,440,400	440,172	5,407,574	2,114,978
16 and over % with dose 1	97.66%	>99%	96.73%	91.29%	94.35%	95.89%	>99%	95.82%	>99%
16 and over % with dose 2	96.01%	>99%	95.22%	88.84%	92.80%	93.85%	>99%	94.36%	97.98%
5 to 11 - dose 1	1,190,619	31,743	356,439	13,096	206,057	83,466	28,388	324,116	139,829
5 to 11 - dose 2	916,304	27,648	281,547	8,846	152,287	64,651	23,318	249,605	103,783
5 to 11 - population	2,276,638	39,789	716,460	24,750	478,731	148,816	45,033	578,499	244,154
5 to 11 % with dose 1	52.30%	79.78%	49.75%	52.91%	43.04%	56.09%	63.04%	56.03%	57.27%
5 to 11 % with dose 2	40.25%	69.49%	39.30%	35.74%	31.81%	43.44%	51.78%	43.15%	42.51%
12 to 15 - dose 1	1,046,990	20,134	322,155	10,705	205,088	68,084	22,781	273,601	115,329
12 to 15 - dose 2	990,773	19,576	307,828	9,634	191,437	64,333	21,675	261,661	106,730
12 to 15 - population	1,243,990	19,693	390,330	13,060	270,146	82,747	26,308	308,611	132,869
12 to 15 % with dose 1	84.16%	>99%	82.53%	81.97%	75.92%	82.28%	86.59%	88.66%	86.80%
12 to 15 % with dose 2	79.64%	>99%	78.86%	73.77%	70.86%	77.75%	82.39%	84.79%	80.33%

*National population will not equal sum of listed jurisdictions due to a small number of people counted in national population residing in some 'other' territories. Sum of state doses will not add to national total as some records are unable to be geocoded to a State or Territory.
Doses sourced from Australian Immunisation Register, population from ABS ERP June 2020

Vaccinations by location

Cumulative total doses administered vs eligible state populations*

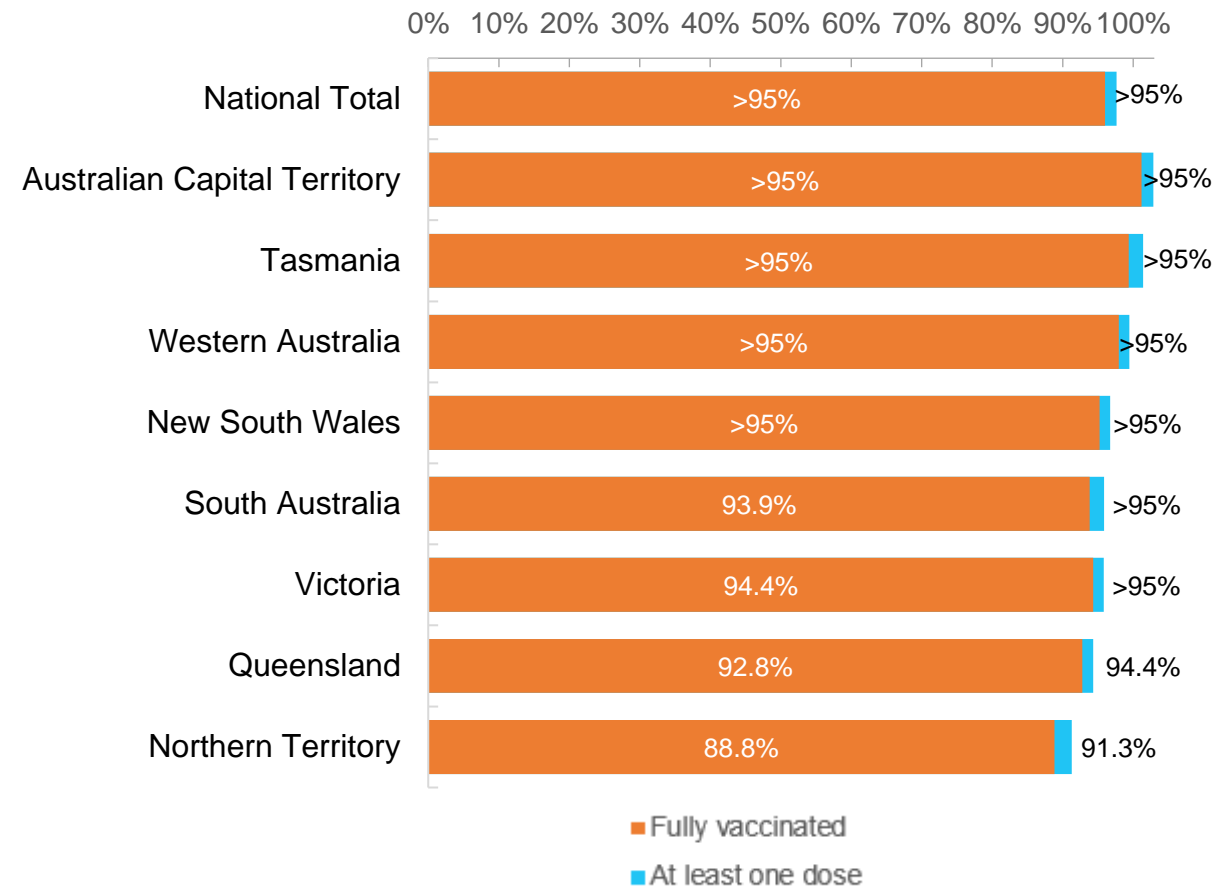


*Not an indication of percentage vaccinated, numbers will exceed 100 due to multiple doses required per person of the population. All doses are included for those aged 12 and above, and are based on vaccination provider location.

Data as at:
16 Jul 2022

Australia's COVID-19
Vaccine Roadmap

First and Second Doses by residential location



Aboriginal and Torres Strait Islander peoples

Number of people vaccinated

Data as at:
12 Jul 2022
Updated weekly

Australia's COVID-19
Vaccine Roadmap



444,318

people over the age of 16
have had at least one dose

85.0%

of people over the age of 16
have had at least one dose



426,102

people over the age of 16
are fully vaccinated

81.5%

of people over the age of 16 are
fully vaccinated



People aged 12 – 15 years

47,760

41,838

67.6%

59.3%

At least one dose

Fully vaccinated

178 Aboriginal community controlled health services (ACCHS)

0#

50

27

44

12

3

21

21

ACT

NSW

NT

QLD

SA

TAS

VIC

WA

Medicare Address State ^{##}	Individuals Dose 1	Individuals Dose 1 %	Individuals Dose 2	Individuals Dose 2 %
Australian Capital Territory	4,800	91.8%	4,681	89.6%
New South Wales	136,312	87.3%	133,265	85.4%
Northern Territory	41,316	89.8%	39,372	85.5%
Queensland	116,837	81.9%	111,512	78.1%
South Australia	20,128	80.7%	18,761	75.2%
Tasmania	13,904	88.9%	13,505	86.3%
Victoria	35,751	90.5%	34,958	88.5%
Western Australia	53,748	86.8%	50,161	81.0%
Unknown/Other Territories	21,522	70.5%	19,887	65.2%
Totals	444,318	85.0%	426,102	81.5%

Source: Australian Immunisation Register

*Identifying as Aboriginal and Torres Strait Islander is optional and the estimated population may be under reported.

**Includes all Aboriginal and Torres Strait Islander peoples who have received a vaccination, not limited to those administered in an ACCHS setting

#ACCHS in the ACT are currently operating as a Commonwealth Vaccine Clinics so not included to avoid double counting

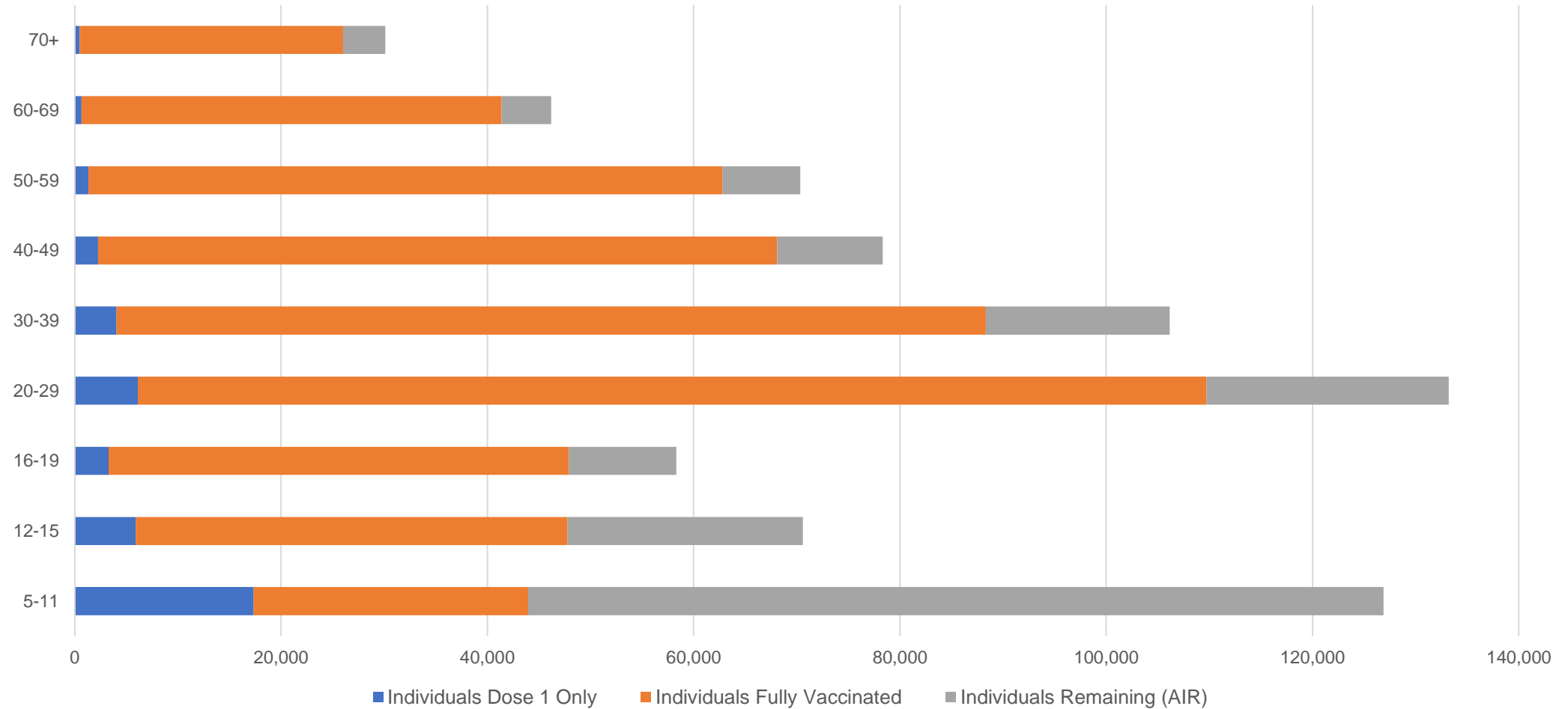
##The above table includes all identified Aboriginal and Torres Strait Islander people who are aged 16 and above by their state of residence.

Aboriginal and Torres Strait Islander peoples

Number of people vaccinated by age

Data as at:
12 Jul 2022
Updated weekly

Australia's COVID-19
Vaccine Roadmap



Source: Australian Immunisation Register

Commonwealth primary care

Data as at:
16 Jul 2022

Australia's COVID-19
Vaccine Roadmap



Primary care vaccine administration sites

5,693	122	178	3,613
GPs	CVCs	ACCHS	Pharmacies



38,516,204 total vaccine doses administered
primary care settings as at 16 July
+ 40,889 recorded in the last 24 hours

Primary care vaccinations by provider type

	Doses administered	Daily increase	7 day increase
General Practice* includes other Commonwealth	30,550,861	19,591	281,772
Pharmacy	7,965,343	21,298	283,309

NSW
13,275,166
(+13,441 daily increase)

VIC
9,545,817
(+11,647 daily increase)

QLD
7,441,506
(+6,708 daily increase)

WA
4,028,777
(+4,050 daily increase)

TAS
736,746
(+669 daily increase)

SA
2,329,091
(+2,868 daily increase)

ACT
613,124
(+1,281 daily increase)

NT
225,972
(+68 daily increase)

320,005

doses administered to persons
residing in other territories or with
missing residential information

*General practice includes Commonwealth Vaccination Clinics, Aboriginal Community Health Centres, Royal Flying Doctor Service and other Commonwealth vaccination facilities

Source: Australian Immunisation Register

Data as at:
16 Jul 2022

Commonwealth aged care and disability doses administered



1,322,265 (+ 53 last 24 hours)

Total vaccine doses administered in aged care and disability facilities as at 16 July

Number of doses administered as part of the Commonwealth aged and disability care rollout

NSW
573,116
(+21 daily increase)

VIC
248,254
(<10 daily increase)

QLD
210,663
(<10 daily increase)

WA
112,981
(13 daily increase)

TAS
23,742
(<10 daily increase)

SA
86,579
(<10 daily increase)

ACT
17,970
(<10 daily increase)

NT
7,704
(<10 daily increase)

41,256

doses administered to persons
residing in other territories or with
missing residential information

*Sourced from the Australian Immunisation Register. Includes all persons vaccinated at participating residential aged care, disability and related industry settings.

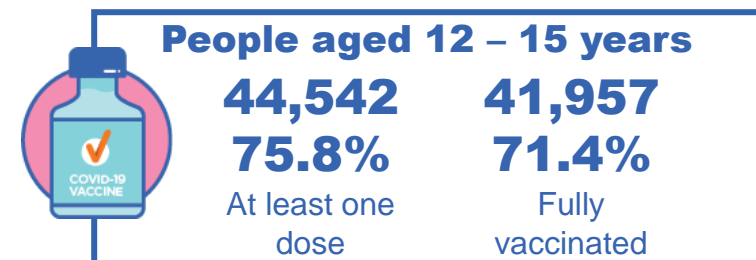
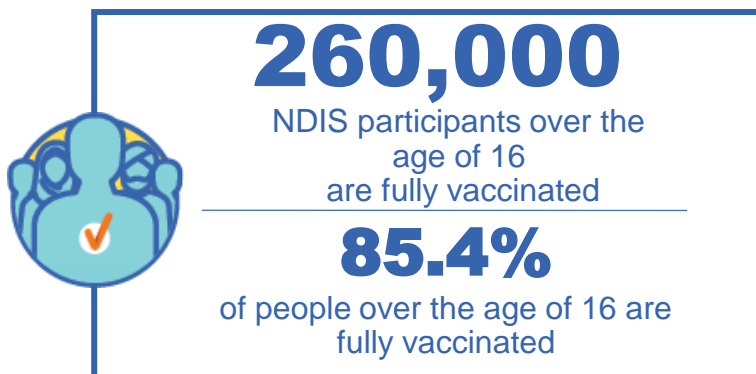
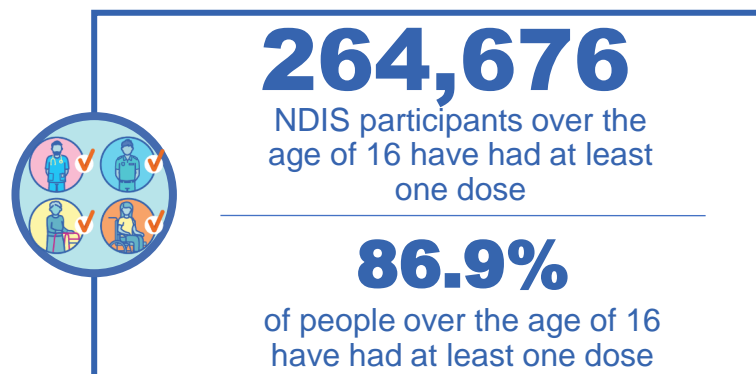
**State level breakdown indicates the residential location and may not align to the state in which the vaccination occurred.

Source: Australian Immunisation Register

National Disability Insurance Scheme (NDIS) reported vaccinations

Data as at:
14 July 2022
Updated weekly

Australia's COVID-19
Vaccine Roadmap



NDIS participant vaccinations

	People aged 16+ with at least one dose	People aged 16+ fully vaccinated	% People aged 16+ with at least one dose	% People aged 16+ fully vaccinated
ACT	4,971	4,909	89.0%	87.9%
NSW	80,935	79,680	87.5%	86.1%
NT	2,295	2,226	77.6%	75.3%
QLD	52,594	51,599	85.1%	83.5%
SA	21,694	21,201	84.6%	82.7%
TAS	6,619	6,467	87.2%	85.2%
VIC	70,267	69,110	88.1%	86.6%
WA	25,301	24,808	88.2%	86.5%
National	264,676	260,000	86.9%	85.4%

Source: Linkage between National Disability Insurance Agency data and the Australian Immunisation Register. Total NDIS participant numbers as at 30 June. Australian Immunisation Register data as at 13 July. Includes all participants regardless of residence type.

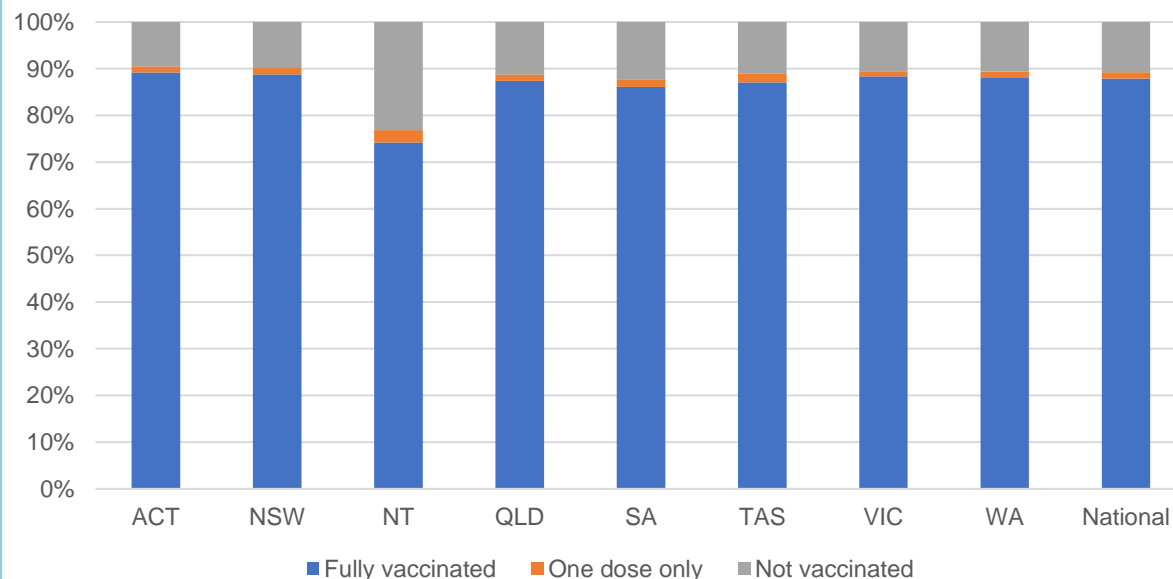
National Disability Insurance Scheme (NDIS) reported vaccinations

Data as at:
14 July 2022
Updated weekly

Australia's COVID-19
Vaccine Roadmap

NATIONAL	Total people with at least one dose	People fully vaccinated	Total number of individuals in cohort	% People with at least one dose	% People fully vaccinated
NDIS participants living in disability accommodation	21,273	20,955	23,858	89.2%	87.8%

NDIS participants in disability and aged care accommodation



Source: Linkage between National Disability Insurance Agency data and the Australian Immunisation Register. Includes participants residing in disability accommodation only.

Source: Total NDIS participant numbers as at 30 June. Participant data as at 12 July. Australian Immunisation Register data as at 13 July. Worker data as at 14 July.

NDIS workforce vaccinations

	NDIS workers with at least one dose	NDIS workers fully vaccinated	% NDIS workers with at least one dose	% NDIS workers fully vaccinated
NSW	128,234	123,322	98.3%	94.6%
VIC	117,646	114,405	98.5%	95.8%
QLD	71,568	70,714	97.9%	96.7%
WA	34,532	33,143	98.9%	95.0%
SA	35,309	33,574	98.5%	93.7%
TAS	12,410	12,025	98.5%	95.4%
ACT	12,343	12,316	99.8%	99.6%
NT	3,967	3,819	99.6%	95.9%
TOTAL	416,009	403,318	98.4%	95.4%

Source: the NDIS Commission has established a requirement for registered NDIS providers who provide intensive disability support services to report on the vaccination status of workers they employ, or otherwise engage, to deliver NDIS-funded supports and services, and who are required to be vaccinated in accordance with in-force state and territory public health orders. The statistics reflect data reported to the NDIS Commission by registered NDIS providers and should be considered indicative and subject to change

Note: Some registered NDIS providers are yet to report on the vaccination status of their workforce. The NDIS Commission is working with those providers around reporting requirements.

Remaining workers not included include those exempt from vaccination requirements, workers whose vaccination status is not yet verified by the provider (such as workers on leave) and provider reporting anomalies.

Residential aged care vaccination rollout

Residential aged care facilities status

175,388

People fully vaccinated

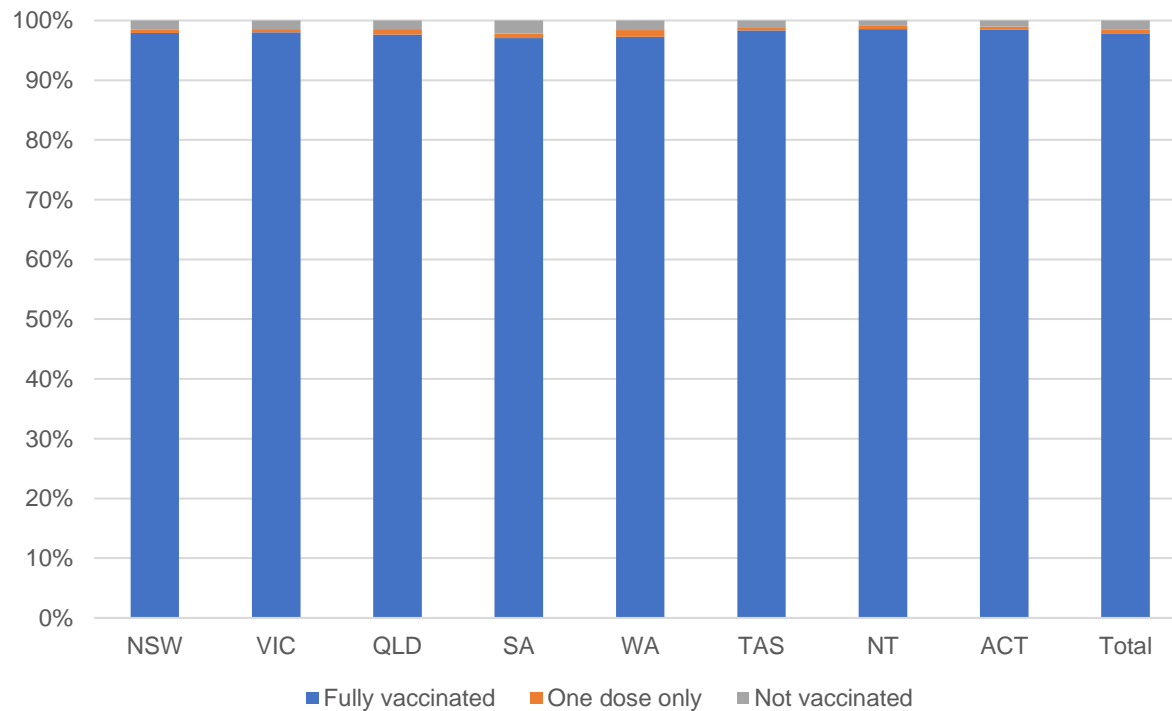
176,630

People with at least one dose

Australia's COVID-19 Vaccine Roadmap

Data as at:
14 July 2022
Updated weekly

Aged care resident vaccinations



Aged care worker vaccinations

Jurisdictions	Total workers with at least one dose	Workers fully vaccinated	% Workers with at least one dose	% Workers fully vaccinated
NSW	77,174	77,049	99.9%	99.7%
VIC	70,741	70,739	100.0%	100.0%
QLD	48,729	48,716	100.0%	100.0%
SA	26,657	26,647	100.0%	100.0%
WA	24,860	24,855	100.0%	100.0%
TAS	7,546	7,546	100.0%	100.0%
NT	925	925	100.0%	100.0%
ACT	2,965	2,965	100.0%	100.0%
Total	259,597	259,442	100.0%	99.9%

Source: Residential aged care provider self-reported COVID-19 vaccination information

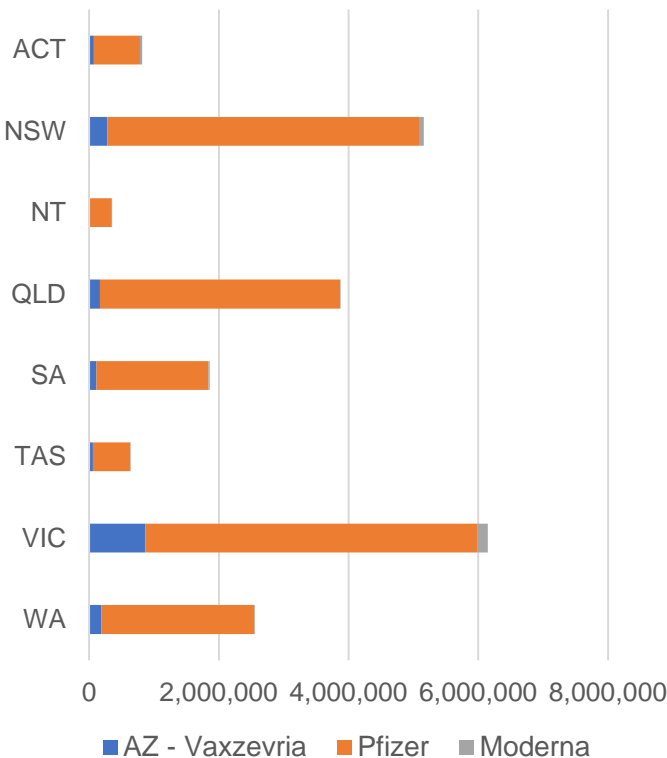
*Status updates are provided by facilities at least once per week. Reporting is updated Monday to Friday to encompass different facility updates being made on different days.

Data is sourced directly from Aged Care Service Providers and is not drawn or closely aligned with data from AIR due to inconsistencies and potential lags in uploading of records.

Data as at:
16 Jul 2022

Jurisdiction administered

Total vaccine doses administered in State and Territory clinics as at 16 July



21,396,292 total vaccine doses administered
in State and Territory clinics as at 16 July
+ **9,054** recorded in the last 24 hours
+ **65,676** recorded in the last 7 days

NSW
5,159,465
(+2,878 daily increase)

VIC
6,151,104
(+1,415 daily increase)

QLD
3,870,553
(+417 daily increase)

WA
2,553,771
(+2,184 daily increase)

TAS
634,474
(+899 daily increase)

SA
1,863,070
(+1,058 daily increase)

ACT
816,144
(+201 daily increase)

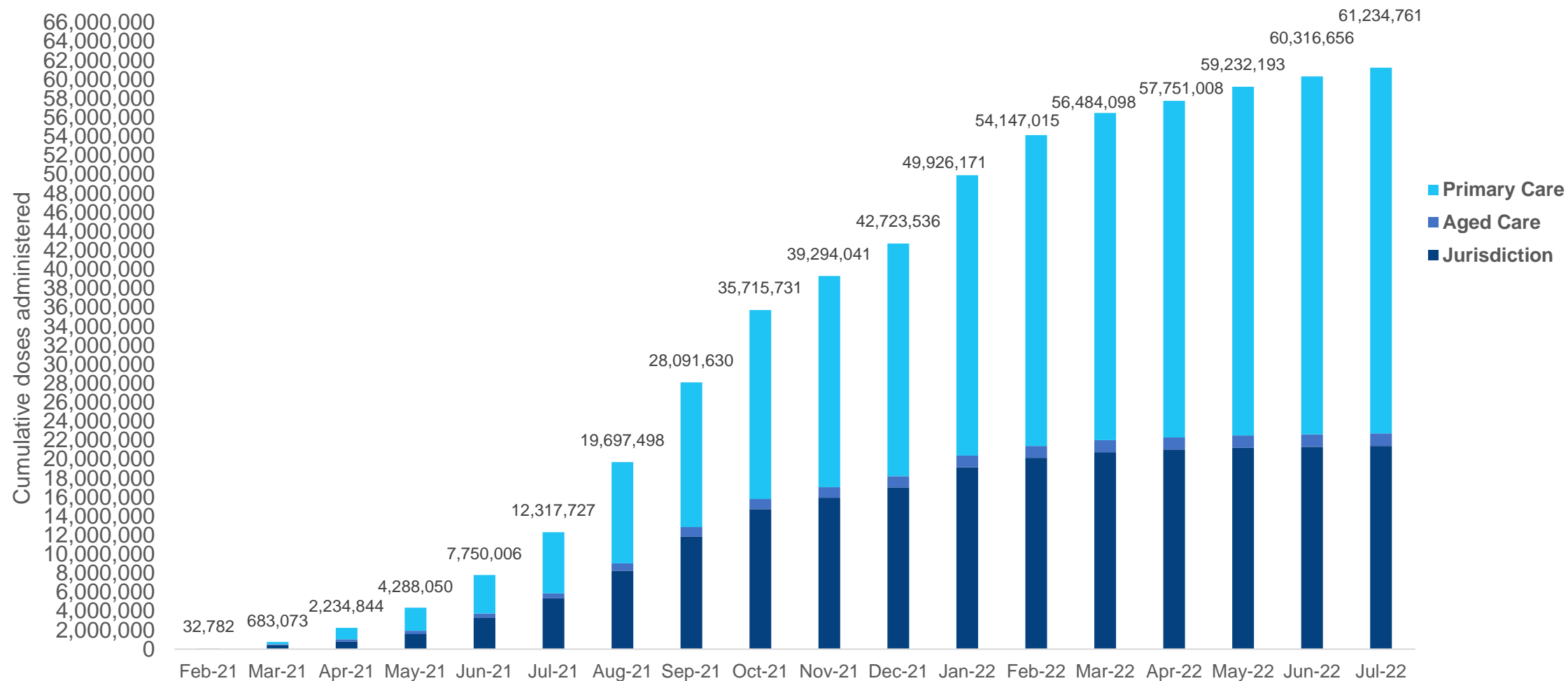
NT
347,711
(<10 daily increase)

*Sourced from the Australian Immunisation Register. Numbers are calculated as difference in daily cumulative reported numbers to allow for historical corrections.

Source: Australian Immunisation Register

Cumulative doses administered by channel

Data as at:
16 Jul 2022

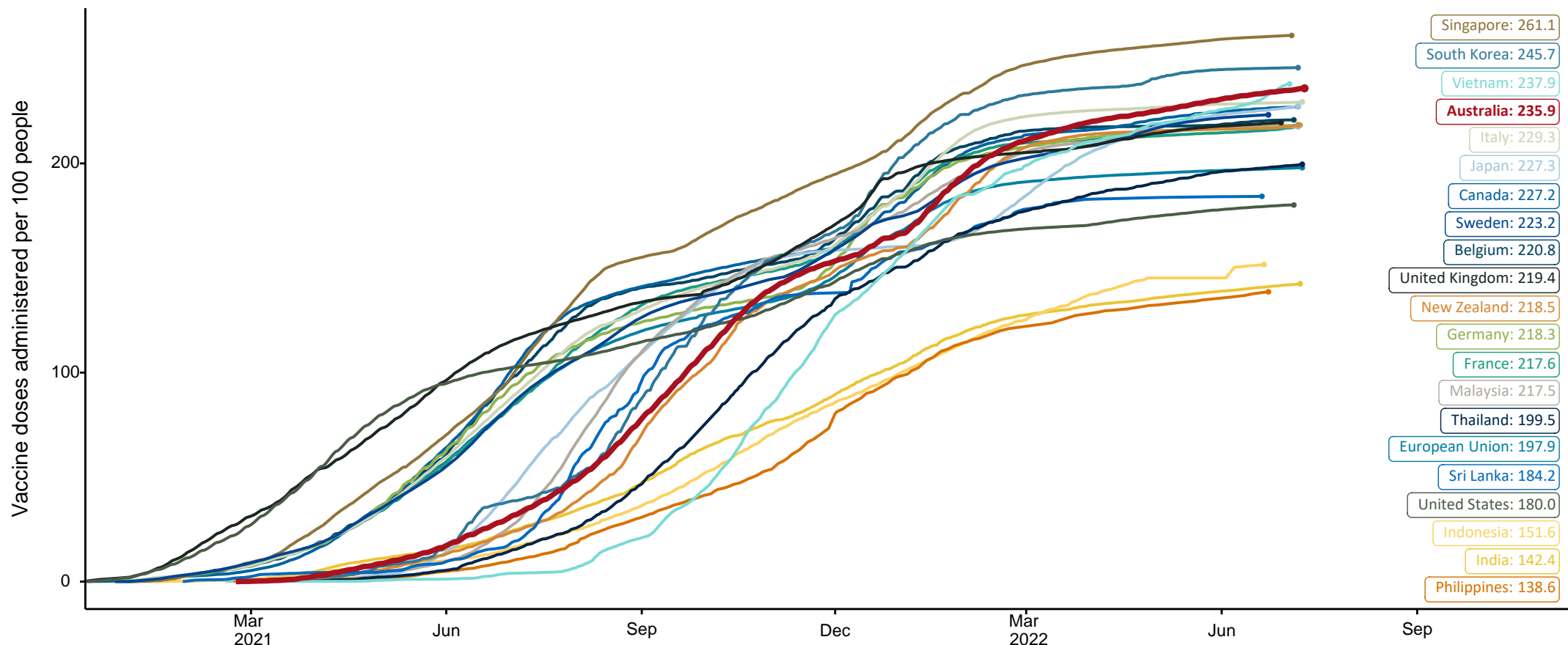


Source: Australian Immunisation Register

COVID-19 vaccine doses per 100, Australia and select countries

Data as at:
10 July 2022
Updated weekly

Australia's COVID-19
Vaccine Roadmap



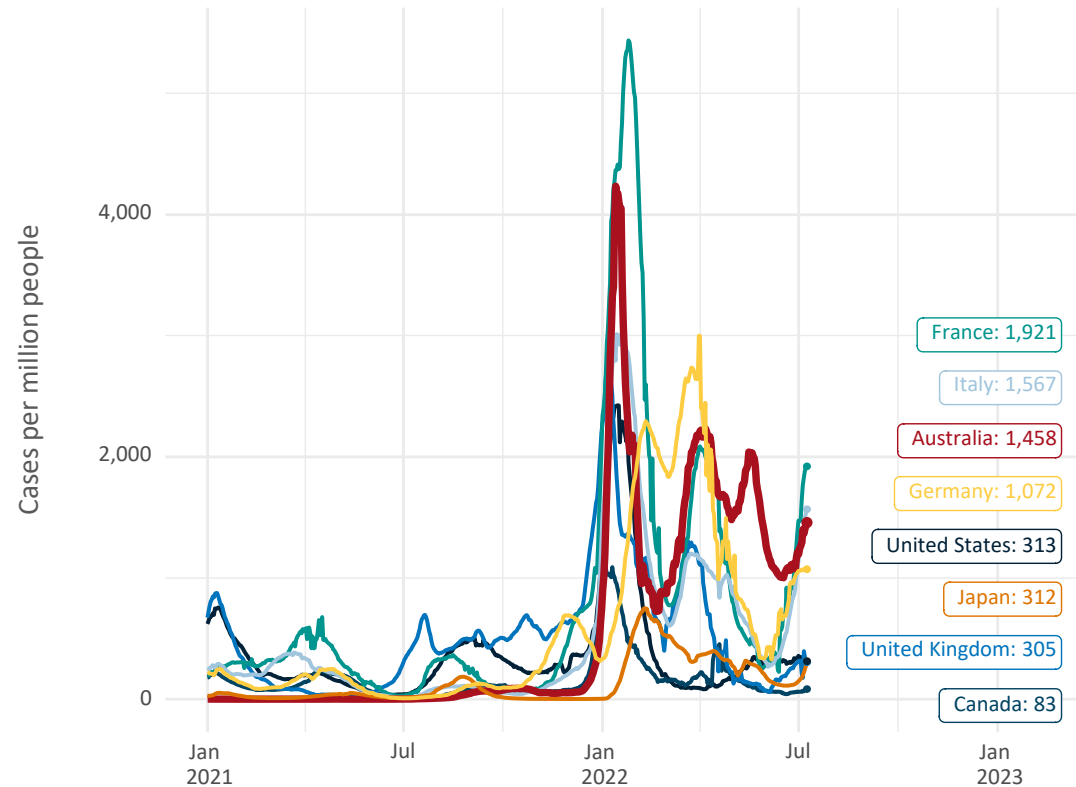
Note: From 11 January 2022, data for Australia includes all doses administered to people 5 and over. Prior to 11 January, data was for 12 and over.
Source: Department of Health (Australia), Our World in Data (international)
Latest data: 10 July

International data – COVID-19

Data as at:
10 July 2022
Updated weekly

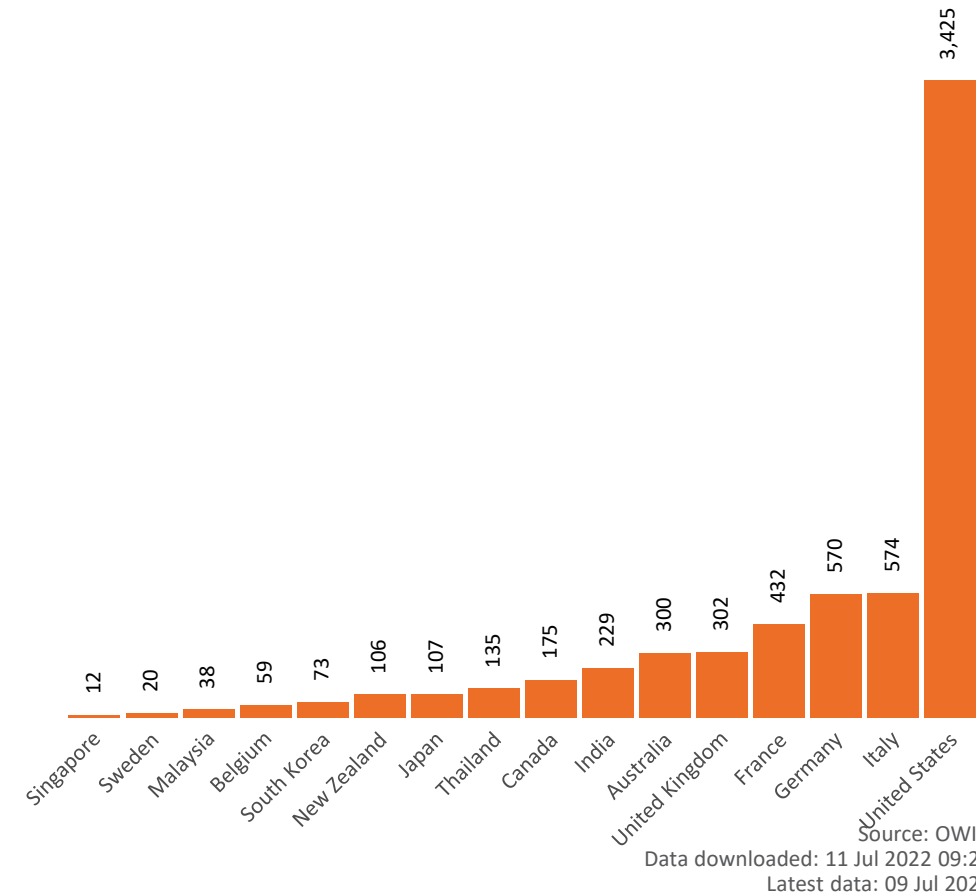
Australia's COVID-19
Vaccine Roadmap

New daily cases per million since 2021, Australia and G7 countries
Smoothed - 7 day average



Source: OWID
Data downloaded: 11 Jul 2022 09:21
Latest data: 09 Jul 2022

COVID-19 deaths in past 7 days - Australia and select countries



Source: OWID
Data downloaded: 11 Jul 2022 09:21
Latest data: 09 Jul 2022