



Australian Government
Operation COVID Shield

COVID-19 Vaccine Rollout

16 July 2022

Data as at:
15 Jul 2022

Total vaccine doses



61,184,765 total vaccine
doses administered nationally as at 15 July
+118,405 recorded in the last 24 hours



20,135,536

people have had at least one
dose

>95%

of people over the age of 16
have had at least one dose



19,796,614

people are fully vaccinated

>95%

of people over the age of 16 are
fully vaccinated



13,989,100

people over the age of 16
who have received three or
more doses

NSW
18,991,932
(+38,475 daily
increase)

VIC
16,016,557
(+29,245 daily
increase)

QLD
11,592,571
(+24,115 daily
increase)

WA
6,717,798
(+11,691 daily
increase)

TAS
1,390,461
(+2,372 daily
increase)

SA
4,269,610
(+9,068 daily
increase)

ACT
1,605,659
(+2,945 daily
increase)

NT
600,177
(+494 daily
increase)

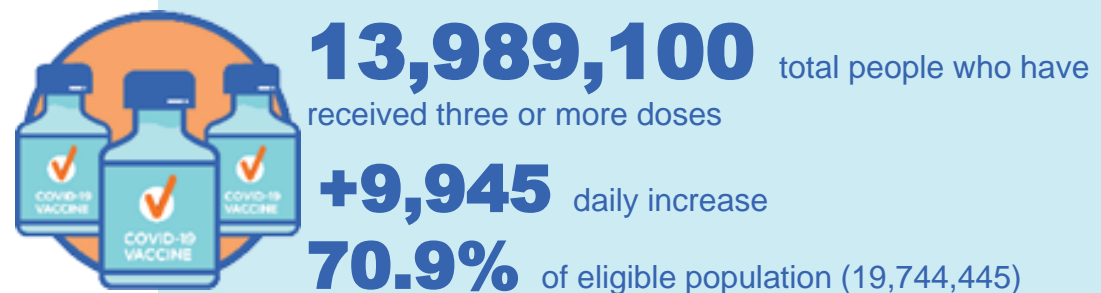
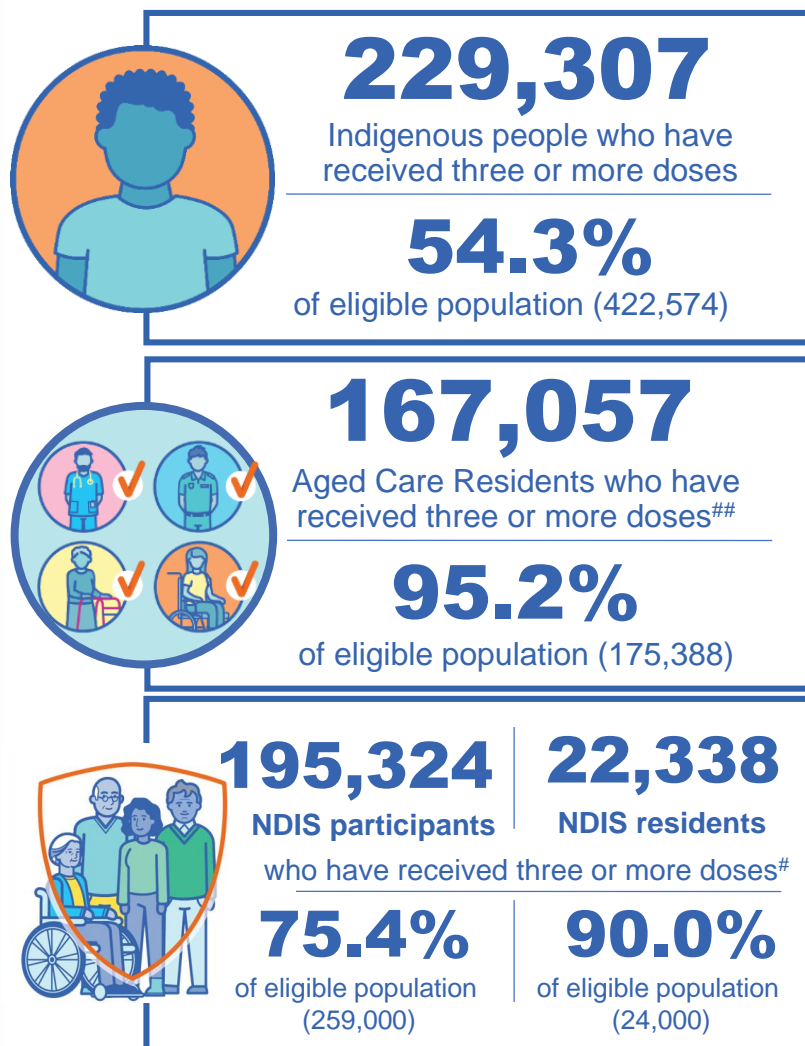
*Administration state breakdown indicates state in which a vaccine was administered

**Overall dose count includes instances of more than three doses per person in a small number of cases.

Source: Australian Immunisation Register

Booster Vaccinations

Data as at:
15 Jul 2022



	Number of People	Daily Increase	% of Eligible
NSW	4,274,457	3,574	68.5%
VIC	3,724,462	2,116	73.1%
QLD	2,428,355	2,074	63.8%
WA	1,710,052	580	82.8%
SA	1,003,678	793	74.6%
TAS	319,989	234	73.4%
ACT	275,743	126	79.3%
NT	131,933	31	78.3%

*People may belong to multiple groups and could be represented in the above breakdowns multiple times.
NDIS participants data as at 12 July 2022. ## Aged Care Residents data as at 15 July 2022.

Source: Australian Immunisation Register

120,431 doses administered to persons residing in other territories or with missing residential information

Fourth Doses

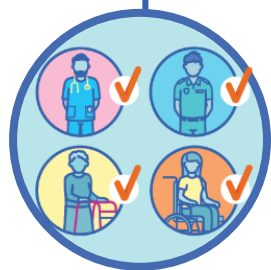
Data as at:
15 Jul 2022

Australia's COVID-19
Vaccine Roadmap



3,069,603 total people (16+) who have received four or more doses

+102,166 daily increase



2,380,502

People aged 65+ who have received
four or more doses

62.1%

of eligible population (3,832,331)



97,679

Aged Care Residents who have
received four or more doses[#]

69.5%

of eligible population (140,528)

	Number of People 16+	Daily Increase
ACT	58,662	1,976
NSW	985,609	32,173
NT	13,154	353
QLD	601,667	20,694
SA	249,792	8,119
TAS	84,212	2,083
VIC	752,717	25,894
WA	308,870	10,393

14,920 doses administered to persons
residing in other territories or with
missing residential information

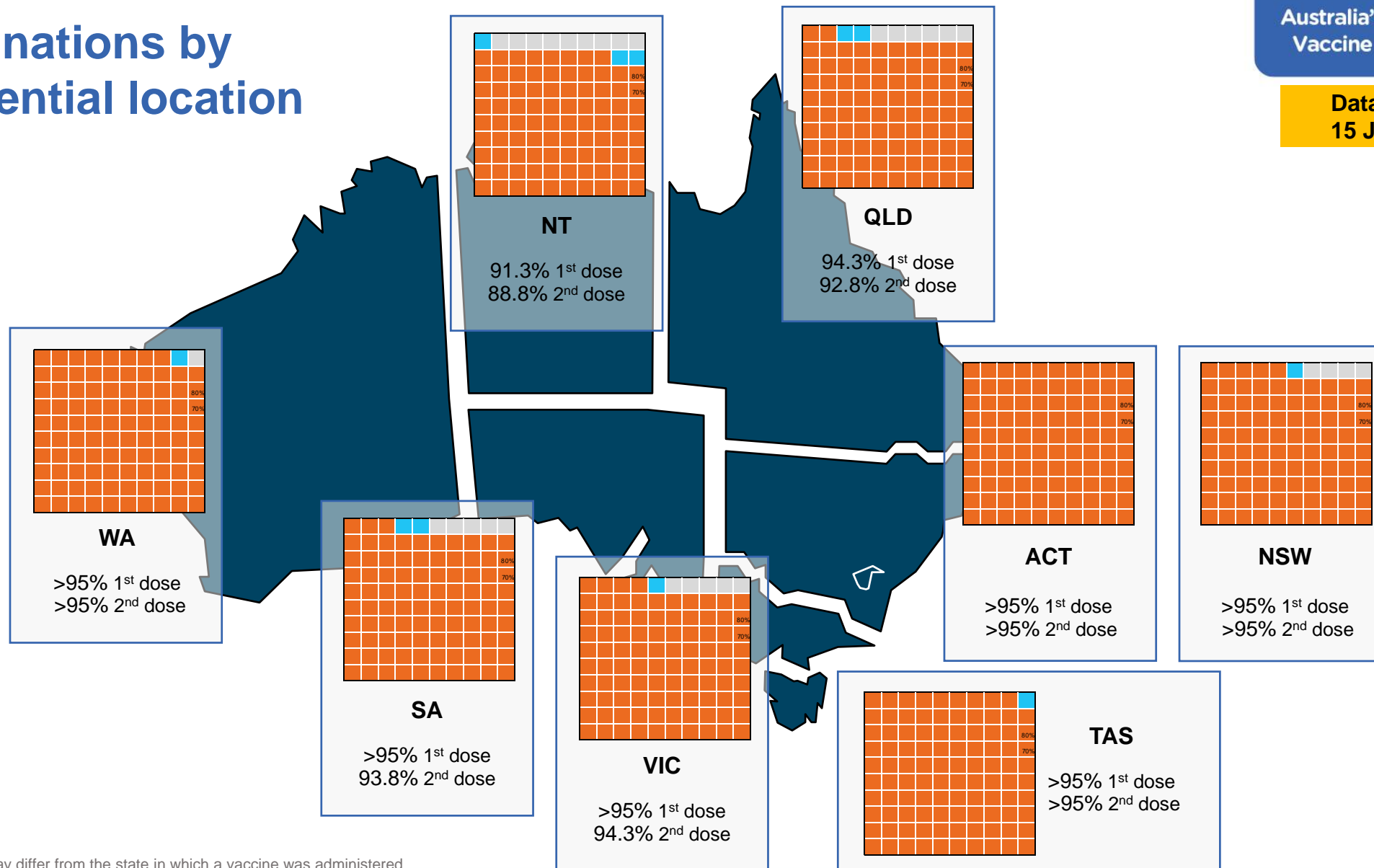
*People become eligible for a fourth dose three months after their third dose. Individuals may belong to multiple groups and could be represented in the above multiple times.
[#]Aged Care Residents data as at 14 July 2022.

Source: Australian Immunisation Register

Vaccinations by residential location

Australia's COVID-19
Vaccine Roadmap

Data as at:
15 Jul 2022



*Residential state may differ from the state in which a vaccine was administered

Commonwealth and Jurisdiction vaccine doses administered

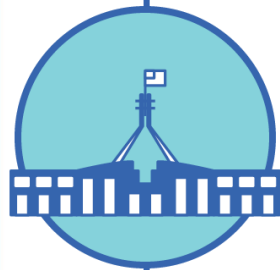
Data as at:
15 Jul 2022



61,184,765 total vaccine
doses administered nationally as at 15 July
+ 118,405 recorded in the last 24 hours



21,387,238
doses administered by state
and territory facilities
+ 10,214
recorded in the last 24 hours



39,797,527
doses administered by
commonwealth facilities
+ 108,191
recorded in the last 24 hours

38,475,315 total vaccine doses
administered in primary care settings
1,322,212 total vaccine doses
administered in aged care and disability
settings

NSW	Jurisdictions	Commonwealth
Cumulative	5,156,587	13,835,345
Daily increase	1,217	37,258

VIC	Jurisdictions	Commonwealth
Cumulative	6,149,689	9,866,868
Daily increase	2,444	26,801

QLD	Jurisdictions	Commonwealth
Cumulative	3,870,136	7,722,435
Daily increase	892	23,223

WA	Jurisdictions	Commonwealth
Cumulative	2,551,587	4,166,211
Daily increase	2,754	8,937

TAS	Jurisdictions	Commonwealth
Cumulative	633,575	756,886
Daily increase	393	1,979

SA	Jurisdictions	Commonwealth
Cumulative	1,862,012	2,407,598
Daily increase	1,867	7,201

ACT	Jurisdictions	Commonwealth
Cumulative	815,943	789,716
Daily increase	634	2,311

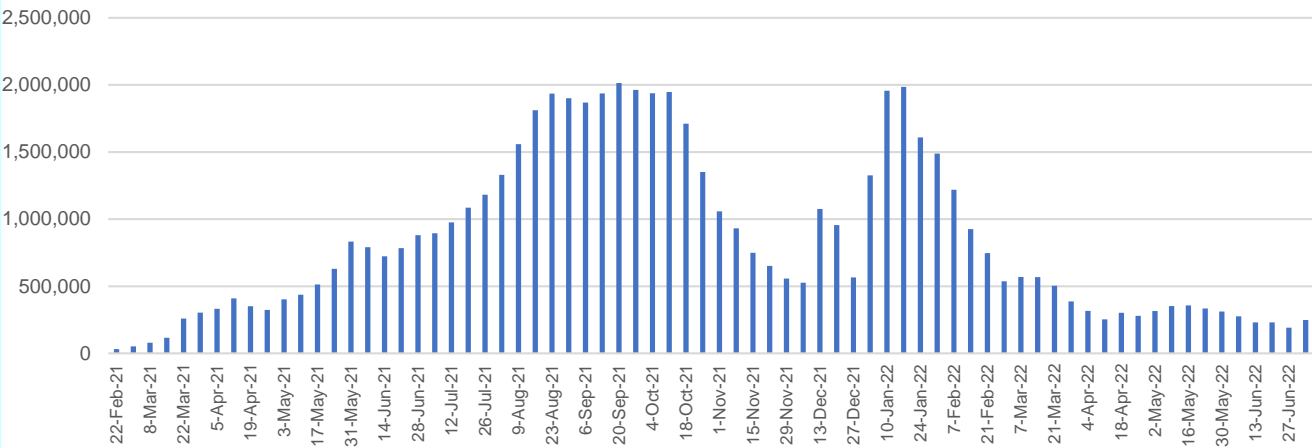
NT	Jurisdictions	Commonwealth
Cumulative	347,709	252,468
Daily increase	13	481

Vaccine milestone charts

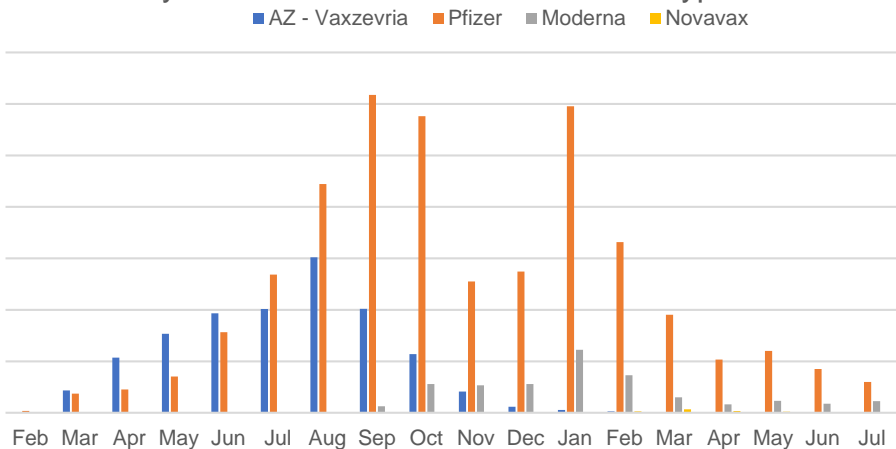
Data as at:
15 Jul 2022

Australia's COVID-19
Vaccine Roadmap

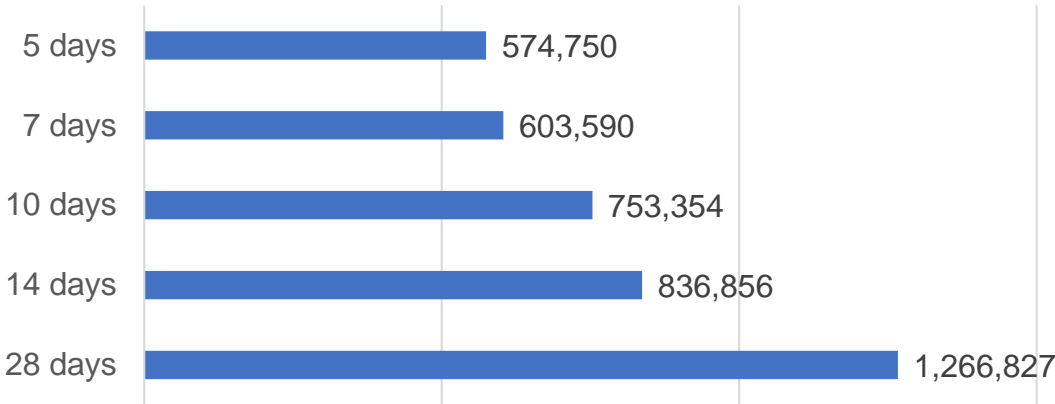
Doses Administered by Week



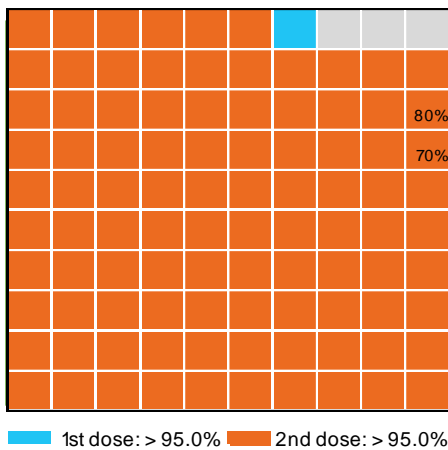
Doses by administration month and vaccine type



Doses Reported



Eligible population percentage coverage



*Each square represents 1% of the national population.
Squares are filled as milestones are achieved.

*Sourced from the Australian Immunisation Register.

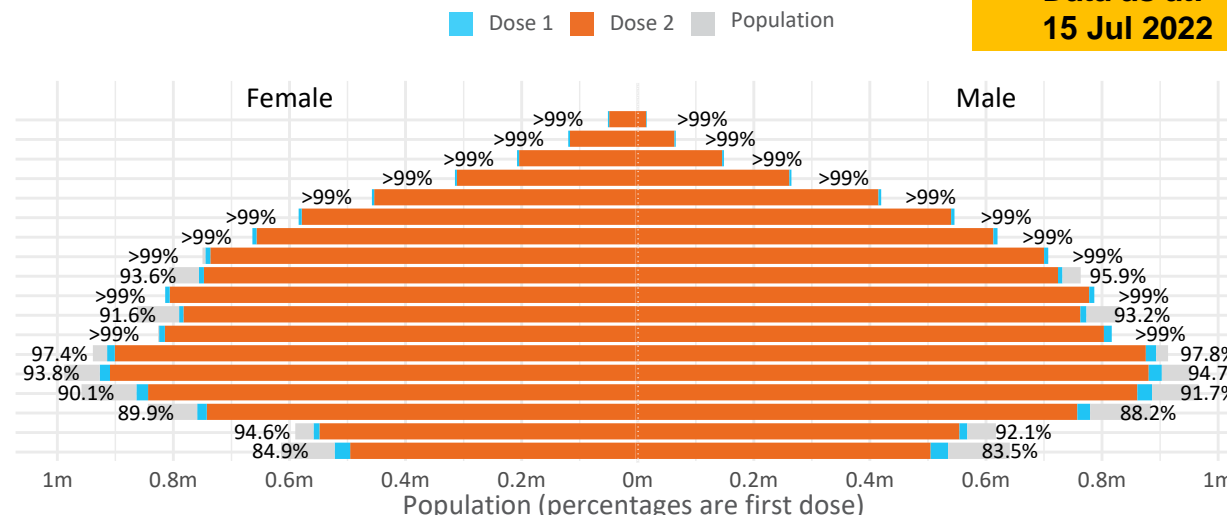
Data as at:
15 Jul 2022

Doses by age and sex

First and second doses by age and sex

	16+	50+	12-15	5-11
Dose 1	97.65% (20,135,536 doses / 20,619,959 people)	>99% (8,947,625 doses / 8,749,703 people)	84.19% (1,047,318 doses / 1,243,990 people)	52.29% (1,190,517 doses / 2,276,638 people)
Dose 2	96.01% (19,796,614 doses / 20,619,959 people)	>99% (8,838,801 doses / 8,749,703 people)	79.67% (991,098 doses / 1,243,990 people)	40.21% (915,436 doses / 2,276,638 people)

Age	Dose 1	Dose 2
95+	66,743 (>99%)	63,268 (>99%)
90-94	183,737 (>99%)	178,238 (>99%)
85-89	353,485 (>99%)	346,749 (>99%)
80-84	574,912 (>99%)	567,724 (>99%)
75-79	869,830 (>99%)	861,242 (>99%)
70-74	1,120,792 (>99%)	1,109,251 (>99%)
65-69	1,273,876 (>99%)	1,258,746 (>99%)
60-64	1,440,905 (>99%)	1,424,118 (>99%)
55-59	1,475,758 (94.9%)	1,458,897 (93.8%)
50-54	1,587,587 (>99%)	1,570,568 (>99%)
45-49	1,550,551 (92.5%)	1,532,091 (91.4%)
40-44	1,628,709 (>99%)	1,604,677 (>99%)
35-39	1,795,673 (97.9%)	1,763,321 (96.1%)
30-34	1,821,260 (94.7%)	1,778,970 (92.5%)
25-29	1,744,120 (91.5%)	1,695,997 (89.0%)
20-24	1,530,666 (89.4%)	1,489,968 (87.0%)
16-19	1,116,932 (93.4%)	1,092,789 (91.4%)
12-15	1,047,318 (84.2%)	991,098 (79.7%)

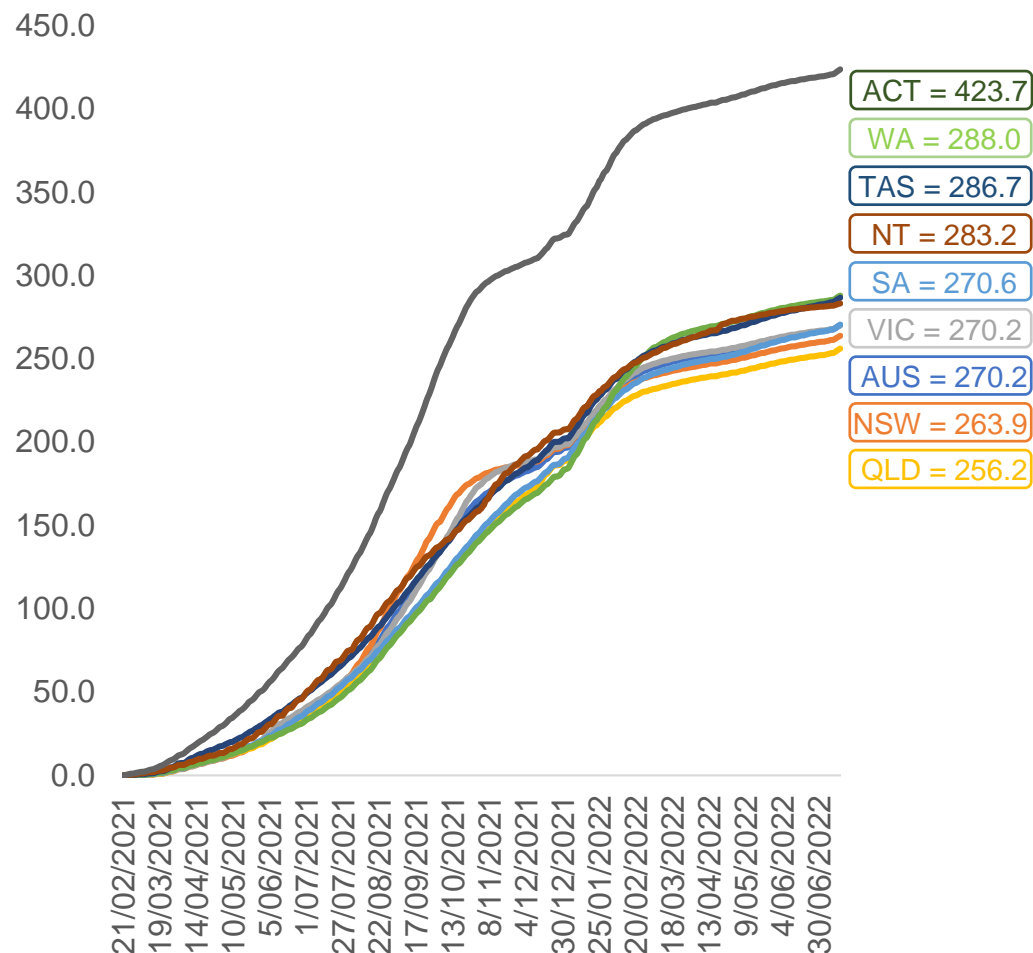


	AUS	ACT	NSW	NT	QLD	SA	TAS	VIC	WA
16 and over - dose 1	20,135,536	353,867	6,350,803	173,974	3,880,224	1,381,133	446,448	5,181,312	2,103,307
16 and over - dose 2	19,796,614	348,089	6,251,453	169,287	3,816,283	1,351,757	437,453	5,102,044	2,072,067
16 and over - population	20,619,959*	344,037	6,565,651	190,571	4,112,707	1,440,400	440,172	5,407,574	2,114,978
16 and over % with dose 1	97.65%	>99%	96.73%	91.29%	94.35%	95.89%	>99%	95.82%	>99%
16 and over % with dose 2	96.01%	>99%	95.21%	88.83%	92.79%	93.85%	>99%	94.35%	97.97%
5 to 11 - dose 1	1,190,517	31,741	356,377	13,097	206,092	83,466	28,387	324,060	139,811
5 to 11 - dose 2	915,436	27,623	281,242	8,845	152,208	64,604	23,300	249,325	103,667
5 to 11 - population	2,276,638	39,789	716,460	24,750	478,731	148,816	45,033	578,499	244,154
5 to 11 % with dose 1	52.29%	79.77%	49.74%	52.92%	43.05%	56.09%	63.04%	56.02%	57.26%
5 to 11 % with dose 2	40.21%	69.42%	39.25%	35.74%	31.79%	43.41%	51.74%	43.10%	42.46%
12 to 15 - dose 1	1,047,318	20,136	322,266	10,713	205,158	68,110	22,791	273,647	115,378
12 to 15 - dose 2	991,098	19,577	307,940	9,643	191,508	64,355	21,683	261,712	106,773
12 to 15 - population	1,243,990	19,693	390,330	13,060	270,146	82,747	26,308	308,611	132,869
12 to 15 % with dose 1	84.19%	>99%	82.56%	82.03%	75.94%	82.31%	86.63%	88.67%	86.84%
12 to 15 % with dose 2	79.67%	>99%	78.89%	73.84%	70.89%	77.77%	82.42%	84.80%	80.36%

*National population will not equal sum of listed jurisdictions due to a small number of people counted in national population residing in some 'other' territories. Sum of state doses will not add to national total as some records are unable to be geocoded to a State or Territory.
Doses sourced from Australian Immunisation Register, population from ABS ERP June 2020

Vaccinations by location

Cumulative total doses administered vs eligible state populations*

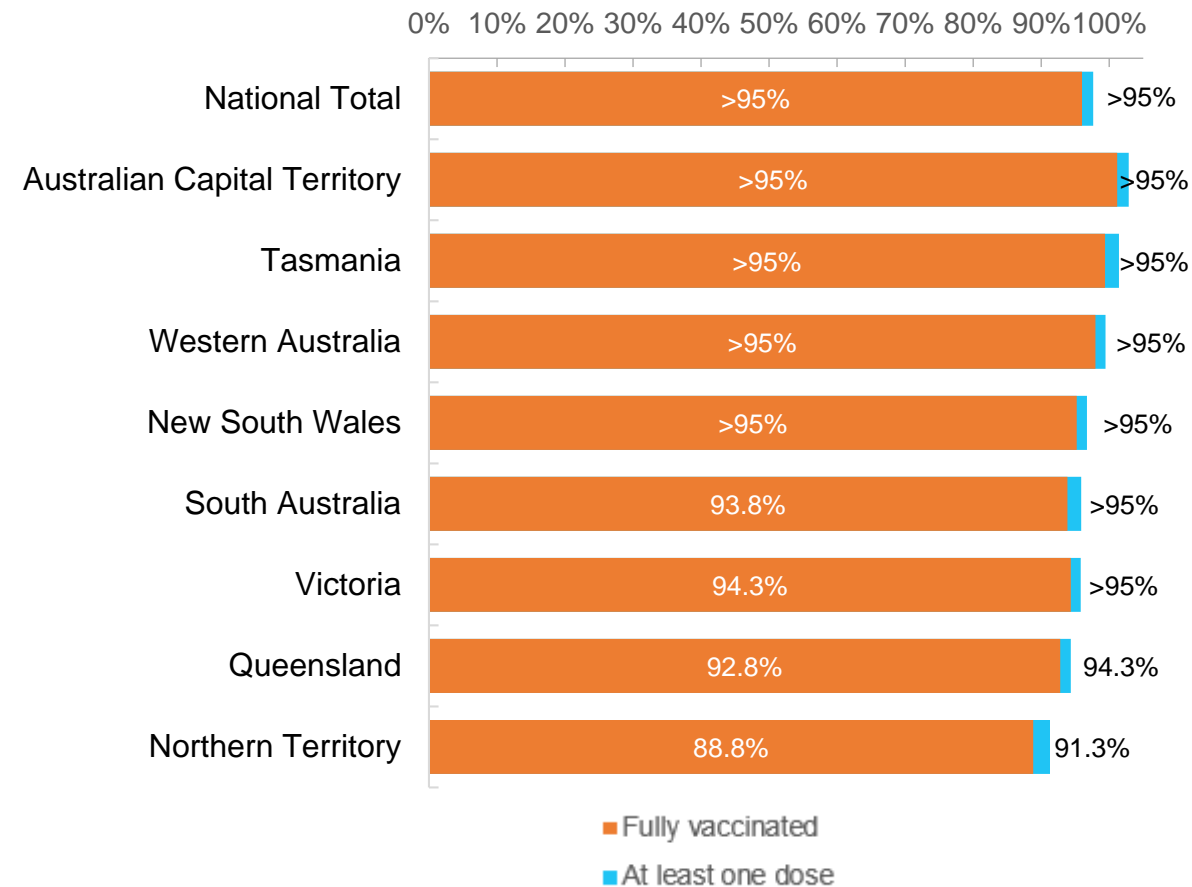


*Not an indication of percentage vaccinated, numbers will exceed 100 due to multiple doses required per person of the population. All doses are included for those aged 12 and above, and are based on vaccination provider location.

Data as at:
15 Jul 2022

Australia's COVID-19
Vaccine Roadmap

First and Second Doses by residential location



Aboriginal and Torres Strait Islander peoples

Number of people vaccinated

Data as at:
12 Jul 2022
Updated weekly

Australia's COVID-19
Vaccine Roadmap



444,318

people over the age of 16
have had at least one dose

85.0%

of people over the age of 16
have had at least one dose



426,102

people over the age of 16
are fully vaccinated

81.5%

of people over the age of 16 are
fully vaccinated



People aged 12 – 15 years

47,760

41,838

67.6%

59.3%

At least one dose

Fully vaccinated

178 Aboriginal community controlled health services (ACCHS)

0#

50

27

44

12

3

21

21

ACT

NSW

NT

QLD

SA

TAS

VIC

WA

Medicare Address State ^{##}	Individuals Dose 1	Individuals Dose 1 %	Individuals Dose 2	Individuals Dose 2 %
Australian Capital Territory	4,800	91.8%	4,681	89.6%
New South Wales	136,312	87.3%	133,265	85.4%
Northern Territory	41,316	89.8%	39,372	85.5%
Queensland	116,837	81.9%	111,512	78.1%
South Australia	20,128	80.7%	18,761	75.2%
Tasmania	13,904	88.9%	13,505	86.3%
Victoria	35,751	90.5%	34,958	88.5%
Western Australia	53,748	86.8%	50,161	81.0%
Unknown/Other Territories	21,522	70.5%	19,887	65.2%
Totals	444,318	85.0%	426,102	81.5%

Source: Australian Immunisation Register

*Identifying as Aboriginal and Torres Strait Islander is optional and the estimated population may be under reported.

**Includes all Aboriginal and Torres Strait Islander peoples who have received a vaccination, not limited to those administered in an ACCHS setting

#ACCHS in the ACT are currently operating as a Commonwealth Vaccine Clinics so not included to avoid double counting

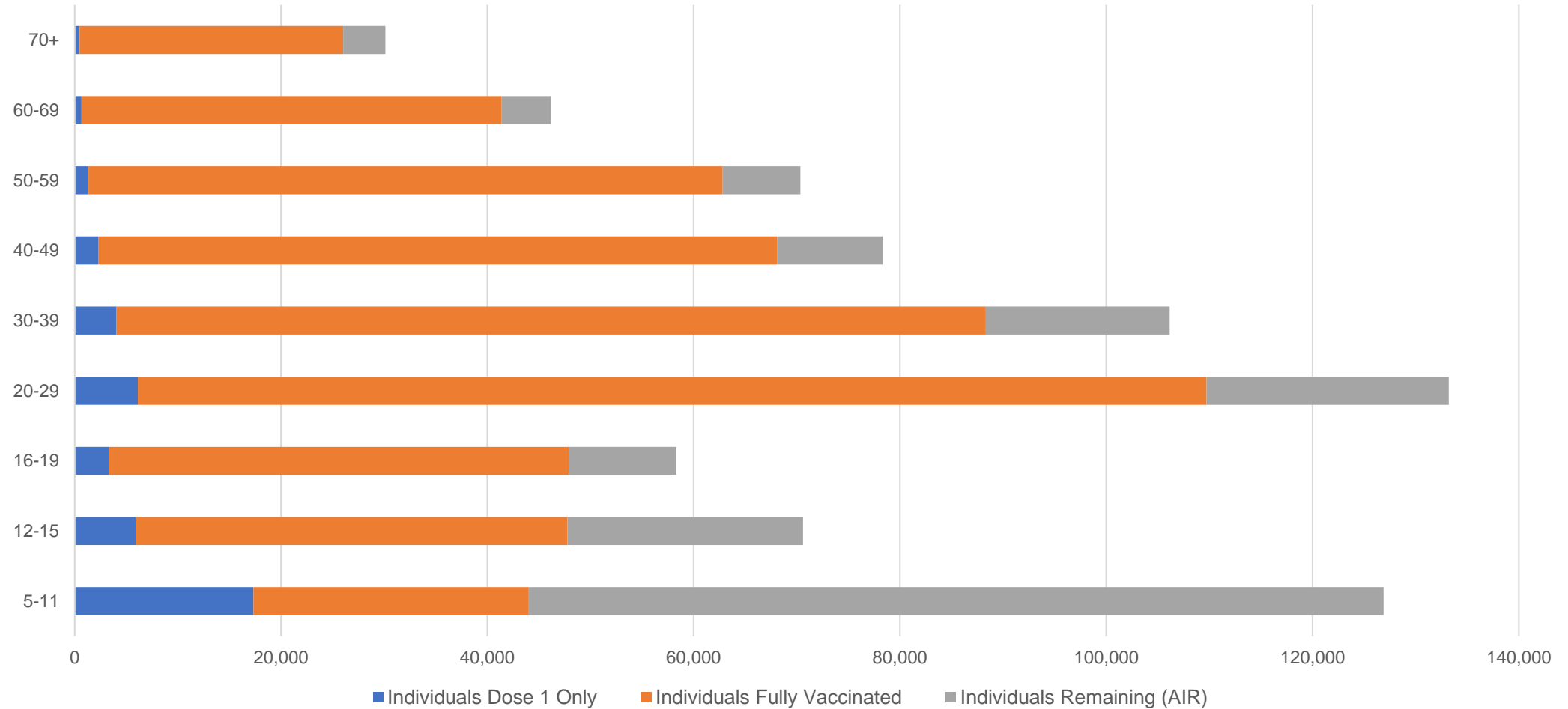
##The above table includes all identified Aboriginal and Torres Strait Islander people who are aged 16 and above by their state of residence.

Aboriginal and Torres Strait Islander peoples

Number of people vaccinated by age

Data as at:
12 Jul 2022
Updated weekly

Australia's COVID-19
Vaccine Roadmap



Source: Australian Immunisation Register

Commonwealth primary care

Data as at:
15 Jul 2022

Australia's COVID-19
Vaccine Roadmap



Primary care vaccine administration sites

5,693	122	178	3,613
GPs	CVCs	ACCHS	Pharmacies



38,475,315 total vaccine doses administered
primary care settings as at 15 July
+ 107,878 recorded in the last 24 hours

Primary care vaccinations by provider type

	Doses administered	Daily increase	7 day increase
General Practice* includes other Commonwealth	30,531,270	54,713	271,173
Pharmacy	7,944,045	53,165	271,120

NSW
13,261,725
(+36,976 daily increase)

VIC
9,534,170
(+26,569 daily increase)

QLD
7,434,798
(+22,745 daily increase)

WA
4,024,727
(+8,664 daily increase)

TAS
736,077
(+2,011 daily increase)

SA
2,326,223
(+7,171 daily increase)

ACT
611,843
(+2,198 daily increase)

NT
225,904
(+361 daily increase)

319,848

doses administered to persons
residing in other territories or with
missing residential information

*General practice includes Commonwealth Vaccination Clinics, Aboriginal Community Health Centres, Royal Flying Doctor Service and other Commonwealth vaccination facilities

Source: Australian Immunisation Register

Data as at:
15 Jul 2022

Commonwealth aged care and disability doses administered



1,322,212 (+ 313 last 24 hours)

Total vaccine doses administered in aged care and disability facilities as at 15 July

Number of doses administered as part of the Commonwealth aged and disability care rollout

NSW
573,095
(+46 daily increase)

VIC
248,250
(<10 daily increase)

QLD
210,696
(<10 daily increase)

WA
112,968
(+69 daily increase)

TAS
23,748
(<10 daily increase)

SA
86,572
(+16 daily increase)

ACT
17,968
(<10 daily increase)

NT
7,706
(<10 daily increase)

41,209

doses administered to persons
residing in other territories or with
missing residential information

*Sourced from the Australian Immunisation Register. Includes all persons vaccinated at participating residential aged care, disability and related industry settings.

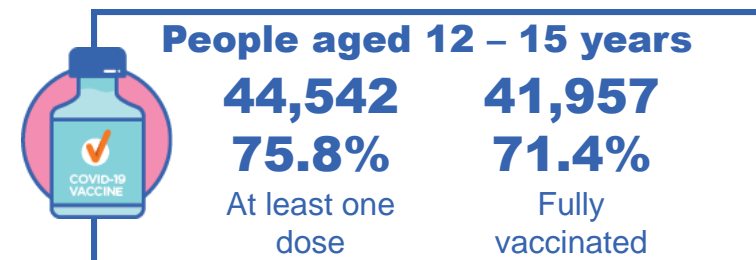
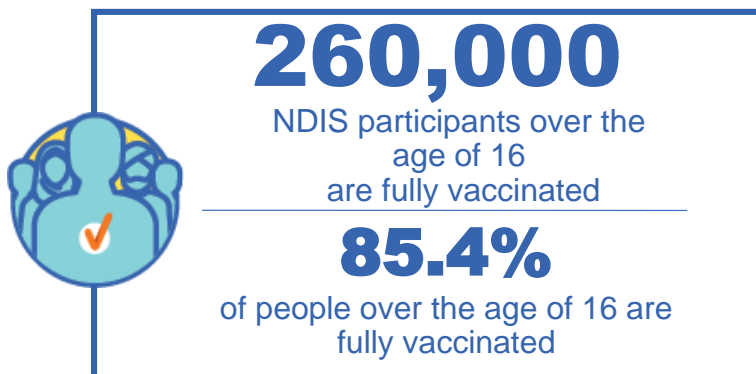
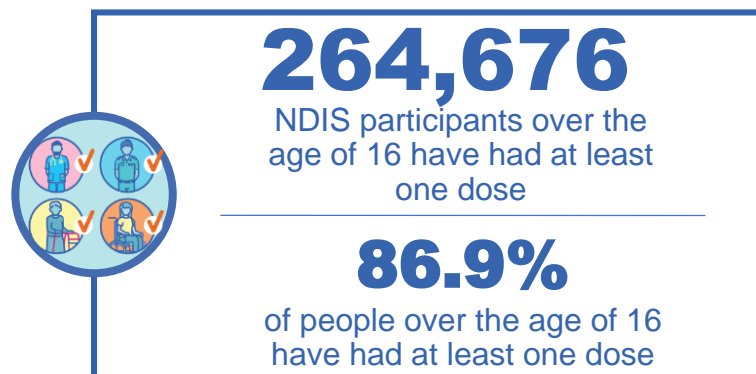
**State level breakdown indicates the residential location and may not align to the state in which the vaccination occurred.

Source: Australian Immunisation Register

National Disability Insurance Scheme (NDIS) reported vaccinations

Data as at:
14 July 2022
Updated weekly

Australia's COVID-19
Vaccine Roadmap



NDIS participant vaccinations

	People aged 16+ with at least one dose	People aged 16+ fully vaccinated	% People aged 16+ with at least one dose	% People aged 16+ fully vaccinated
ACT	4,971	4,909	89.0%	87.9%
NSW	80,935	79,680	87.5%	86.1%
NT	2,295	2,226	77.6%	75.3%
QLD	52,594	51,599	85.1%	83.5%
SA	21,694	21,201	84.6%	82.7%
TAS	6,619	6,467	87.2%	85.2%
VIC	70,267	69,110	88.1%	86.6%
WA	25,301	24,808	88.2%	86.5%
National	264,676	260,000	86.9%	85.4%

Source: Linkage between National Disability Insurance Agency data and the Australian Immunisation Register. Total NDIS participant numbers as at 30 June. Australian Immunisation Register data as at 13 July. Includes all participants regardless of residence type.

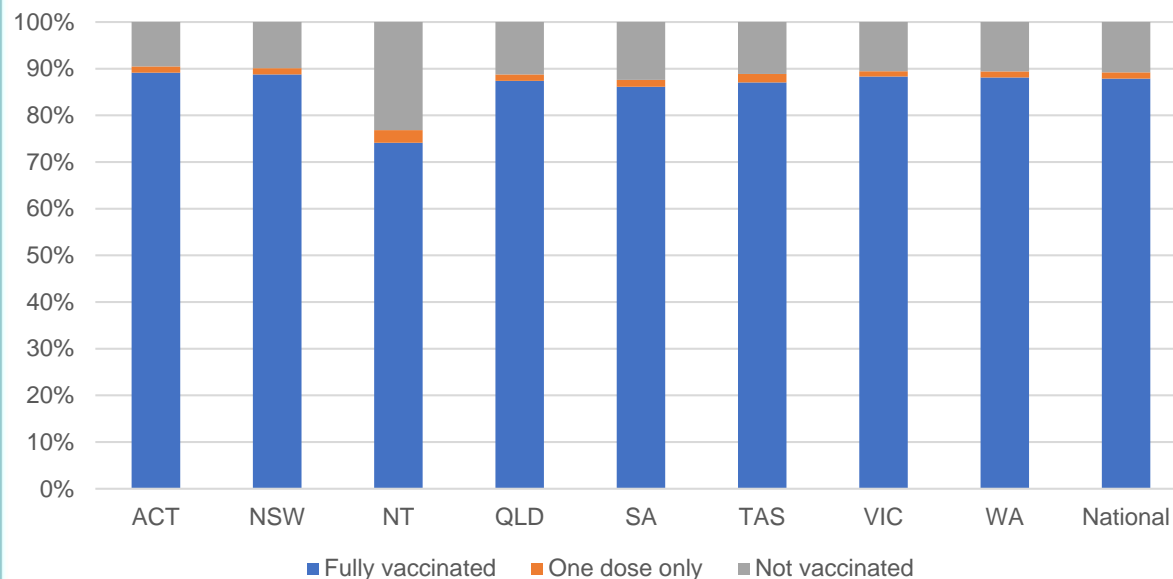
National Disability Insurance Scheme (NDIS) reported vaccinations

Data as at:
14 July 2022
Updated weekly

Australia's COVID-19
Vaccine Roadmap

NATIONAL	Total people with at least one dose	People fully vaccinated	Total number of individuals in cohort	% People with at least one dose	% People fully vaccinated
NDIS participants living in disability accommodation	21,273	20,955	23,858	89.2%	87.8%

NDIS participants in disability and aged care accommodation



Source: Linkage between National Disability Insurance Agency data and the Australian Immunisation Register. Includes participants residing in disability accommodation only.

Source: Total NDIS participant numbers as at 30 June. Participant data as at 12 July. Australian Immunisation Register data as at 13 July. Worker data as at 14 July.

NDIS workforce vaccinations

	NDIS workers with at least one dose	NDIS workers fully vaccinated	% NDIS workers with at least one dose	% NDIS workers fully vaccinated
NSW	128,234	123,322	98.3%	94.6%
VIC	117,646	114,405	98.5%	95.8%
QLD	71,568	70,714	97.9%	96.7%
WA	34,532	33,143	98.9%	95.0%
SA	35,309	33,574	98.5%	93.7%
TAS	12,410	12,025	98.5%	95.4%
ACT	12,343	12,316	99.8%	99.6%
NT	3,967	3,819	99.6%	95.9%
TOTAL	416,009	403,318	98.4%	95.4%

Source: the NDIS Commission has established a requirement for registered NDIS providers who provide intensive disability support services to report on the vaccination status of workers they employ, or otherwise engage, to deliver NDIS-funded supports and services, and who are required to be vaccinated in accordance with in-force state and territory public health orders. The statistics reflect data reported to the NDIS Commission by registered NDIS providers and should be considered indicative and subject to change.

Note: Some registered NDIS providers are yet to report on the vaccination status of their workforce. The NDIS Commission is working with those providers around reporting requirements.

Remaining workers not included include those exempt from vaccination requirements, workers whose vaccination status is not yet verified by the provider (such as workers on leave) and provider reporting anomalies.

Residential aged care vaccination rollout

Residential aged care facilities status

175,388

People fully vaccinated

176,630

People with at least one dose

Australia's COVID-19 Vaccine Roadmap

Data as at:
14 July 2022
Updated weekly

Aged care resident vaccinations



Aged care worker vaccinations

Jurisdictions	Total workers with at least one dose	Workers fully vaccinated	% Workers with at least one dose	% Workers fully vaccinated
NSW	77,174	77,049	99.9%	99.7%
VIC	70,741	70,739	100.0%	100.0%
QLD	48,729	48,716	100.0%	100.0%
SA	26,657	26,647	100.0%	100.0%
WA	24,860	24,855	100.0%	100.0%
TAS	7,546	7,546	100.0%	100.0%
NT	925	925	100.0%	100.0%
ACT	2,965	2,965	100.0%	100.0%
Total	259,597	259,442	100.0%	99.9%

Source: Residential aged care provider self-reported COVID-19 vaccination information

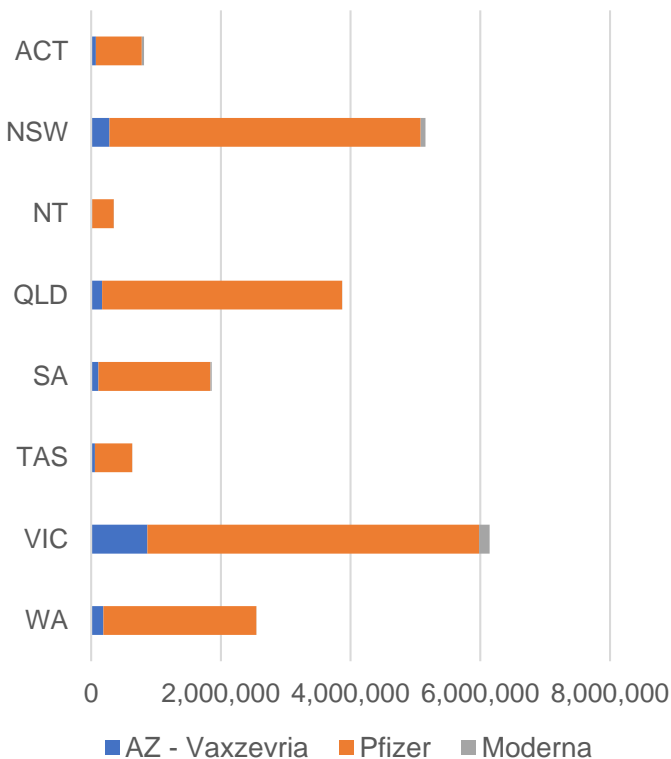
*Status updates are provided by facilities at least once per week. Reporting is updated Monday to Friday to encompass different facility updates being made on different days.

Data is sourced directly from Aged Care Service Providers and is not drawn or closely aligned with data from AIR due to inconsistencies and potential lags in uploading of records.

Data as at:
15 Jul 2022

Jurisdiction administered

Total vaccine doses administered in State and Territory clinics as at 15 July



21,387,238 total vaccine doses administered
in State and Territory clinics as at 15 July
+ **10,214** recorded in the last 24 hours
+ **59,253** recorded in the last 7 days

NSW
5,156,587
(+1,217 daily
increase)

VIC
6,149,689
(+2,444 daily
increase)

QLD
3,870,136
(+892 daily
increase)

WA
2,551,587
(+2,754 daily
increase)

TAS
633,575
(+393 daily
increase)

SA
1,862,012
(+1,867 daily
increase)

ACT
815,943
(+634 daily
increase)

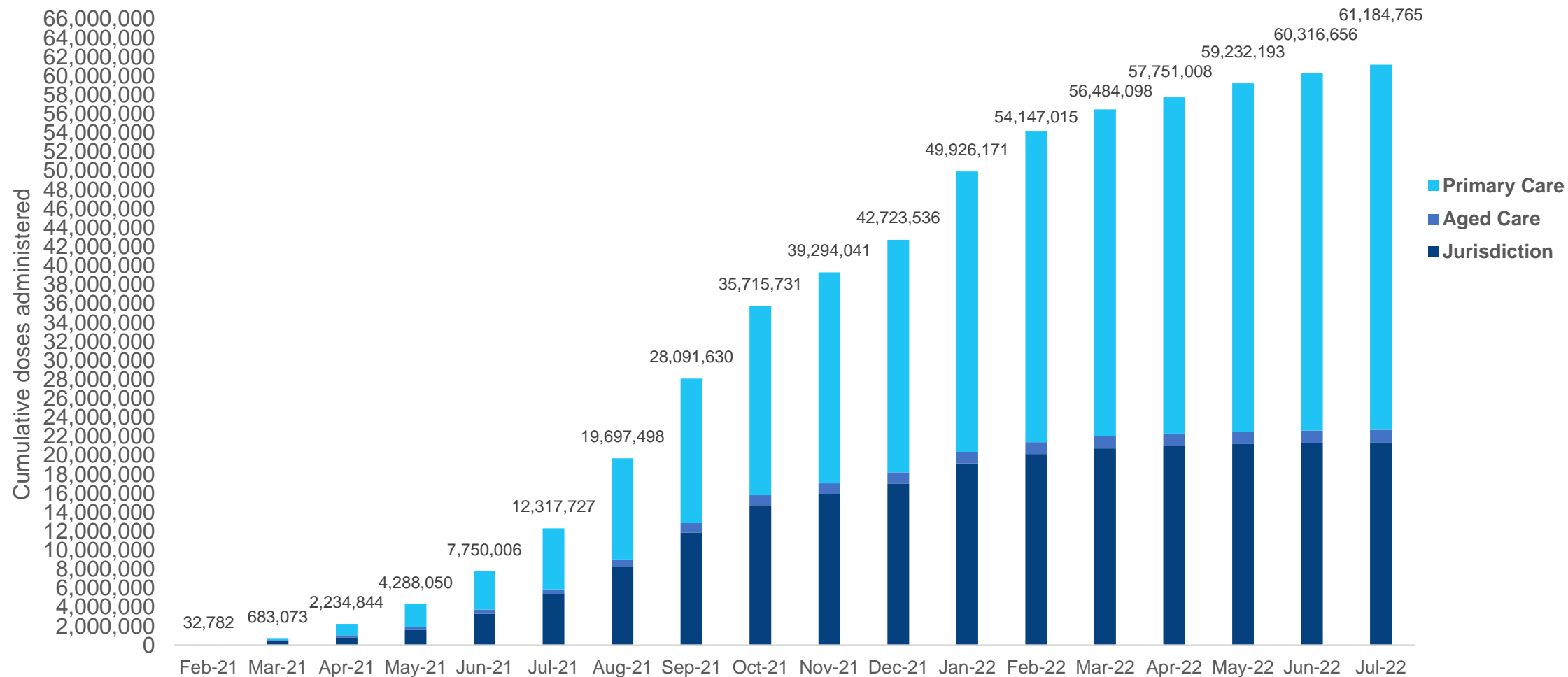
NT
347,709
(+13 daily
increase)

*Sourced from the Australian Immunisation Register. Numbers are calculated as difference in daily cumulative reported numbers to allow for historical corrections.

Source: Australian Immunisation Register

Cumulative doses administered by channel

Data as at:
15 Jul 2022

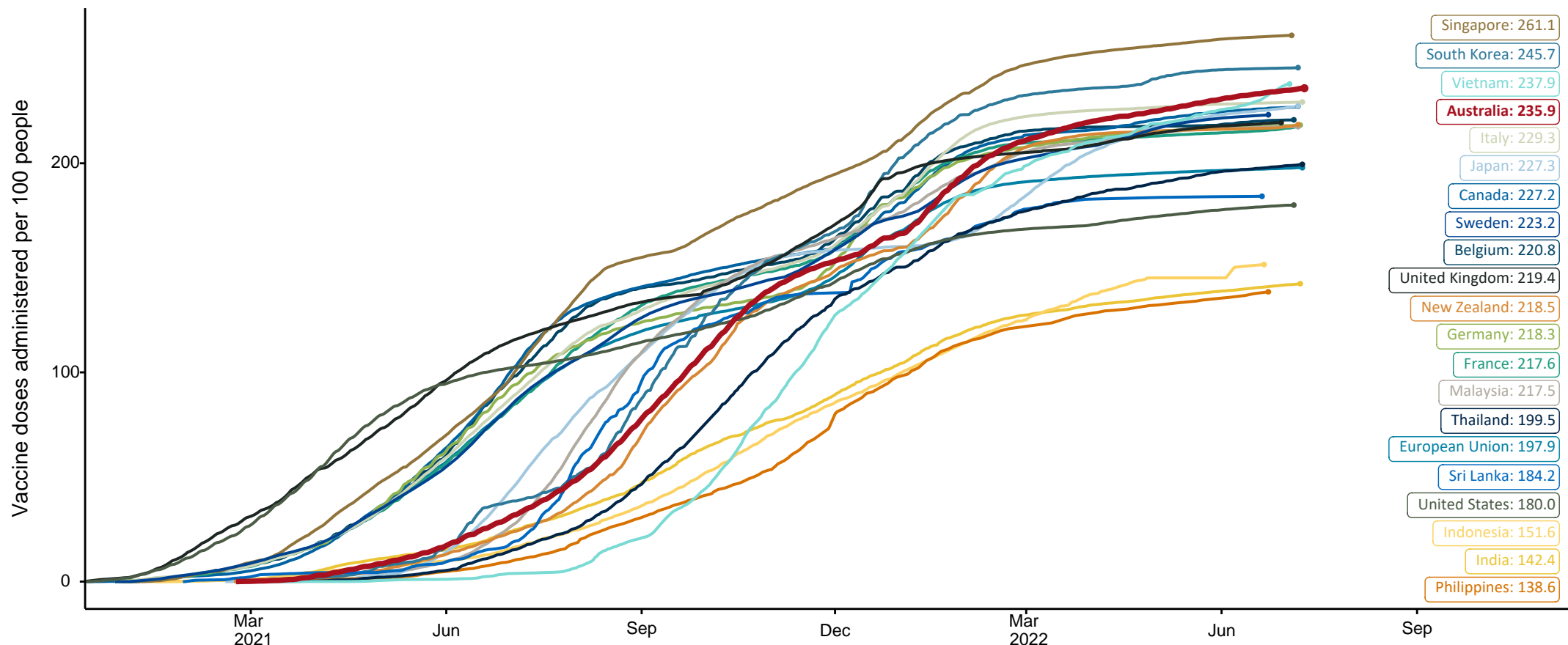


Source: Australian Immunisation Register

COVID-19 vaccine doses per 100, Australia and select countries

Data as at:
10 July 2022
Updated weekly

Australia's COVID-19
Vaccine Roadmap



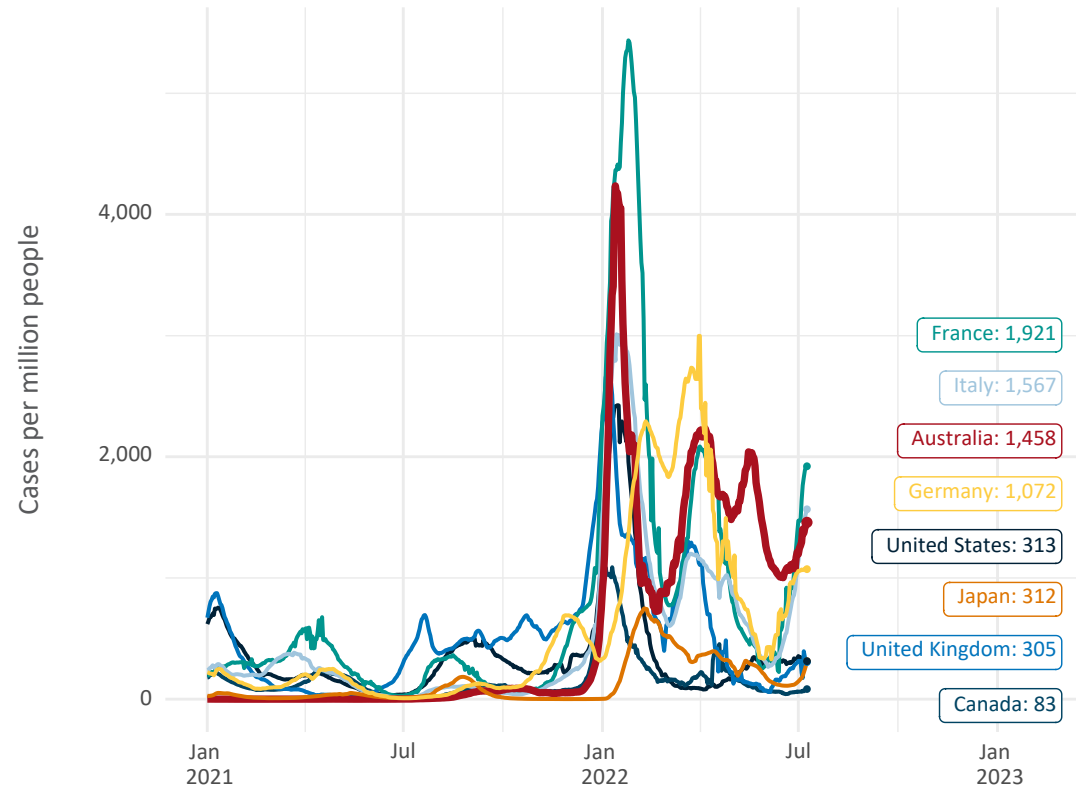
Note: From 11 January 2022, data for Australia includes all doses administered to people 5 and over. Prior to 11 January, data was for 12 and over.
Source: Department of Health (Australia), Our World in Data (international)
Latest data: 10 July

International data – COVID-19

Australia's COVID-19
Vaccine Roadmap

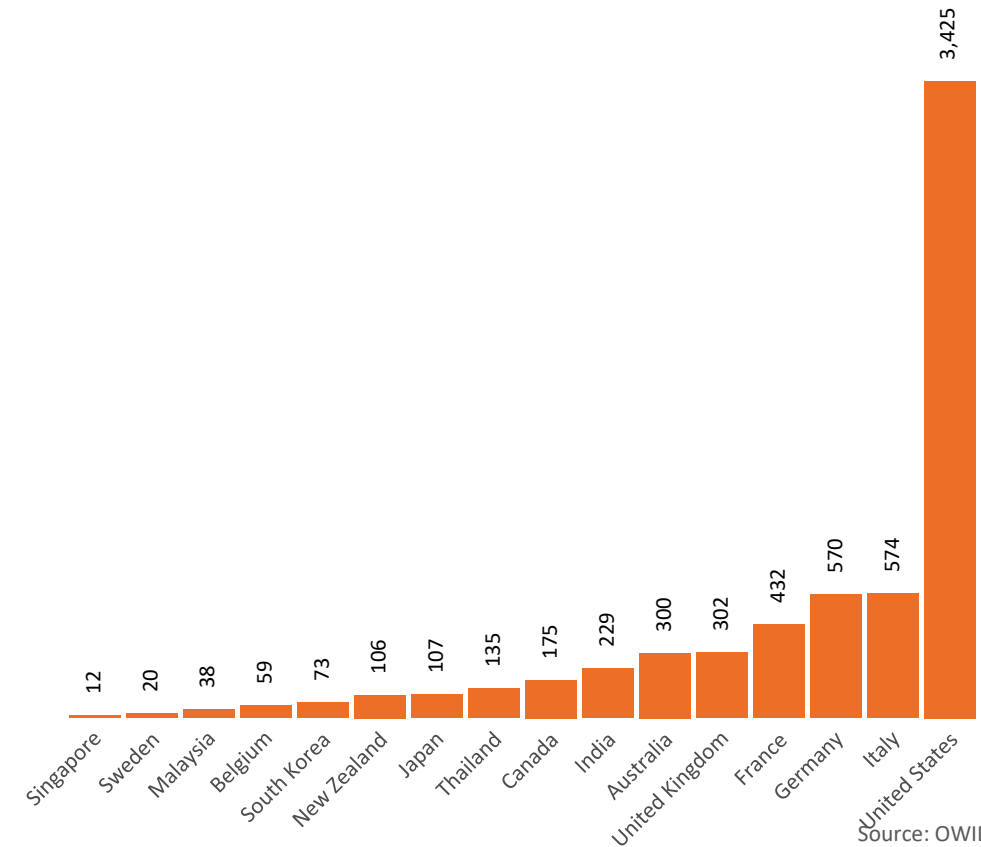
Data as at:
10 July 2022
Updated weekly

New daily cases per million since 2021, Australia and G7 countries
Smoothed - 7 day average



Source: OWID
Data downloaded: 11 Jul 2022 09:21
Latest data: 09 Jul 2022

COVID-19 deaths in past 7 days - Australia and select countries



Source: OWID
Data downloaded: 11 Jul 2022 09:21
Latest data: 09 Jul 2022