



Australian Government
Operation COVID Shield

COVID-19 Vaccine Roll-out

15 July 2022

Data as at:
14 Jul 2022

Total vaccine doses



61,066,360 total vaccine
doses administered nationally as at 14 July
+118,101 recorded in the last 24 hours



20,133,921

people have had at least one
dose

>95%

of people over the age of 16
have had at least one dose



19,795,244

people are fully vaccinated

>95%

of people over the age of 16 are
fully vaccinated



13,979,155

people over the age of 16
who have received three or
more doses

NSW
18,953,457
(+36,549 daily
increase)

VIC
15,987,312
(+28,598 daily
increase)

QLD
11,568,456
(+24,829 daily
increase)

WA
6,706,107
(+12,211 daily
increase)

TAS
1,388,089
(+2,579 daily
increase)

SA
4,260,542
(+9,569 daily
increase)

ACT
1,602,714
(+3,060 daily
increase)

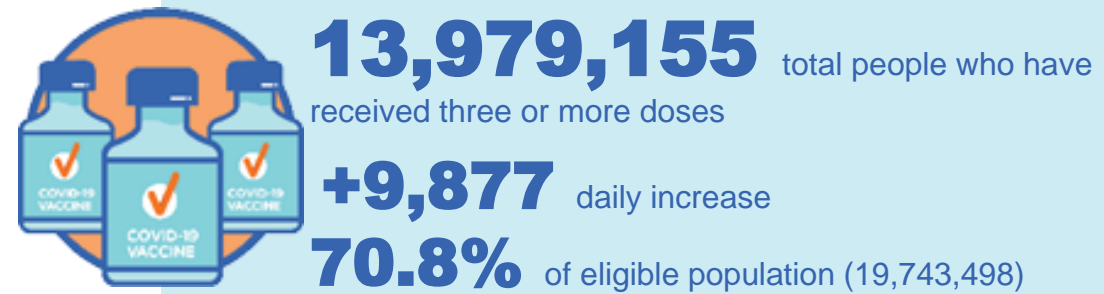
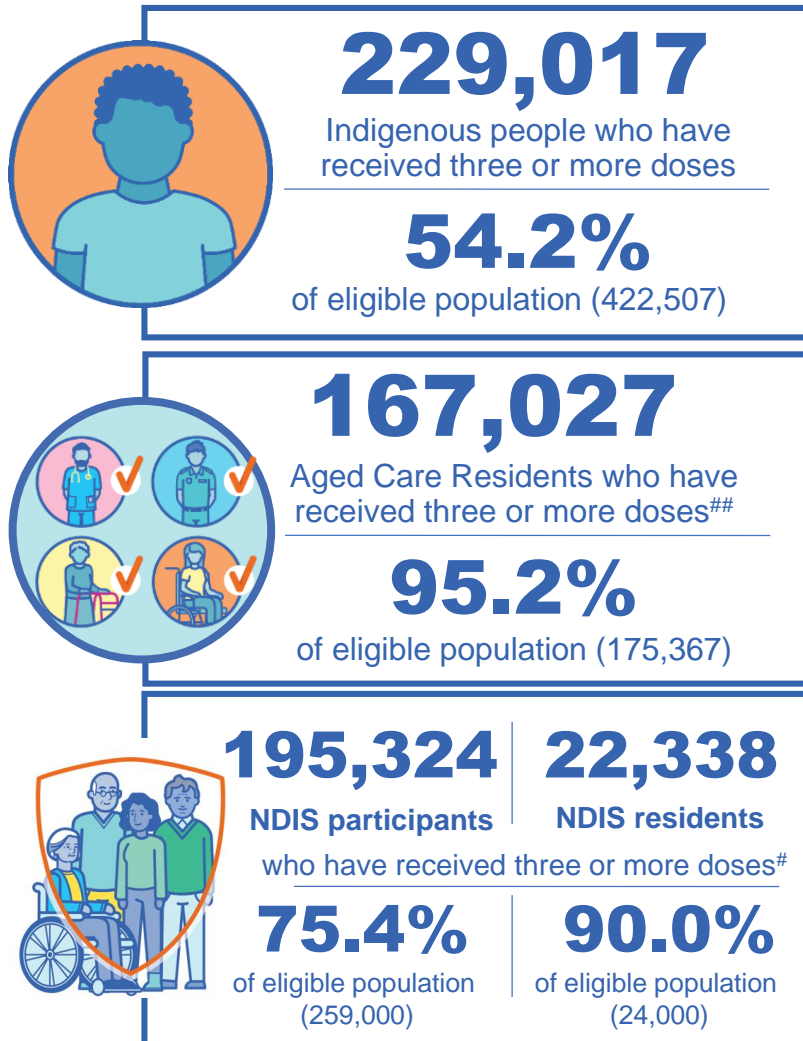
NT
599,683
(+706 daily
increase)

*Administration state breakdown indicates state in which a vaccine was administered

**Overall dose count includes instances of more than three doses per person in a small number of cases.

Source: Australian Immunisation Register

Booster Vaccinations



Data as at:
14 Jul 2022

	Number of People	Daily Increase	% of Eligible
NSW	4,270,883	3,513	68.5%
VIC	3,722,346	2,157	73.1%
QLD	2,426,281	2,081	63.8%
WA	1,709,472	692	82.8%
SA	1,002,885	887	74.5%
TAS	319,755	189	73.3%
ACT	275,617	153	79.3%
NT	131,902	61	78.3%

*People may belong to multiple groups and could be represented in the above breakdowns multiple times.
NDIS participants data as at 12 July 2022. ## Aged Care Residents data as at 14 July 2022.

Source: Australian Immunisation Register

120,014 doses administered to persons residing in other territories or with missing residential information

Fourth Doses

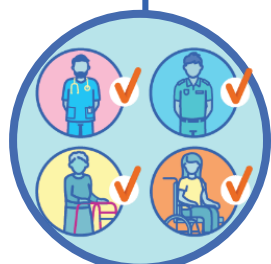
Data as at:
14 Jul 2022

Australia's COVID-19
Vaccine Roadmap



2,967,437 total people (16+) who have received four or more doses

+102,185 daily increase



2,353,067

People aged 65+ who have received
four or more doses

61.4%

of eligible population (3,831,508)



97,005

Aged Care Residents who have
received four or more doses[#]

69.2%

of eligible population (140,260)

	Number of People 16+	Daily Increase
ACT	56,686	2,048
NSW	953,436	30,663
NT	12,801	501
QLD	580,973	21,260
SA	241,673	8,525
TAS	82,129	2,297
VIC	726,823	25,542
WA	298,477	10,826

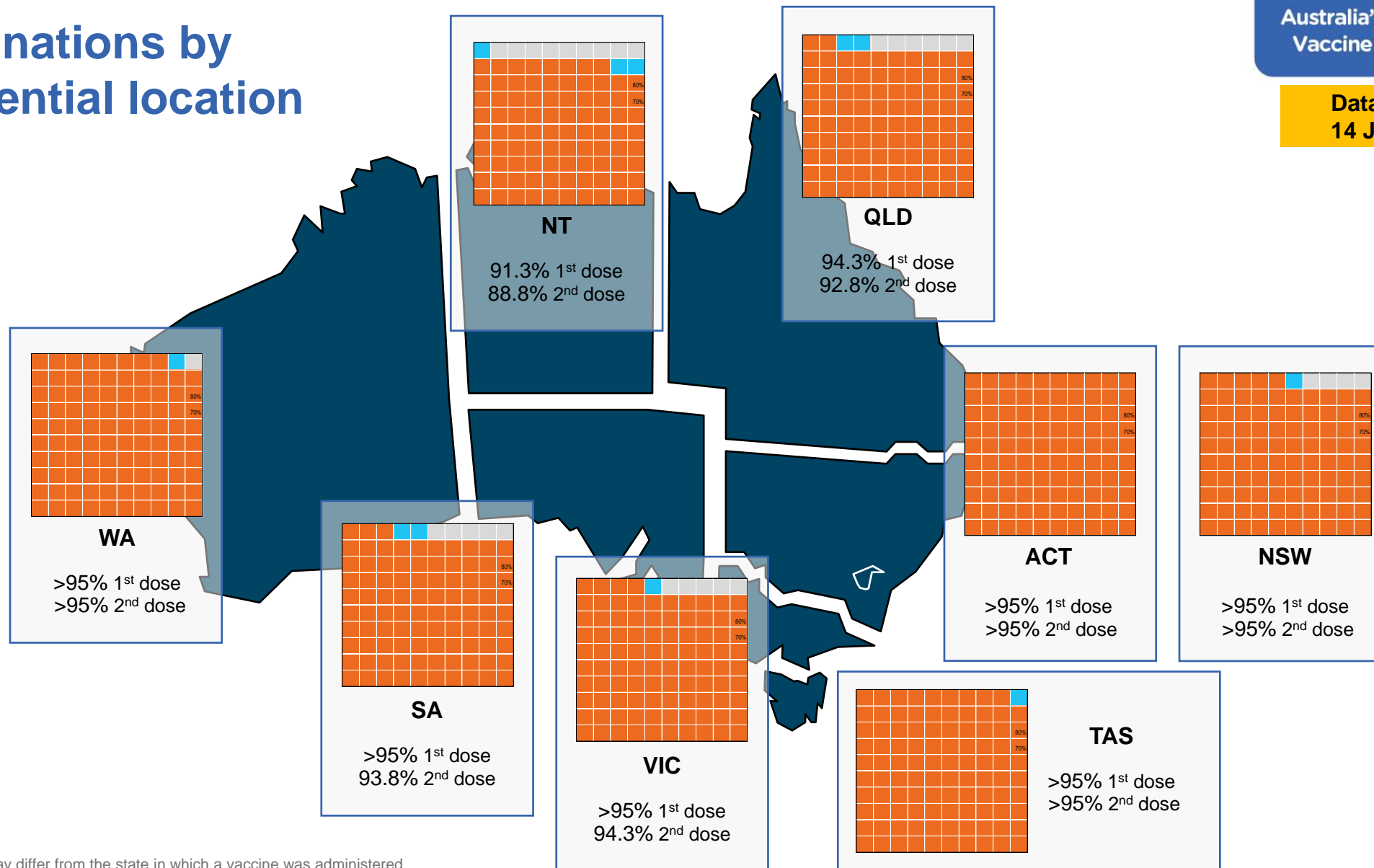
14,439 doses administered to persons
residing in other territories or with
missing residential information

*People become eligible for a fourth dose three months after their third dose. Individuals may belong to multiple groups and could be represented in the above multiple times.
[#]Aged Care Residents data as at 13 July 2022.

Source: Australian Immunisation Register

Vaccinations by residential location

Data as at:
14 Jul 2022



*Residential state may differ from the state in which a vaccine was administered

Commonwealth and Jurisdiction vaccine doses administered

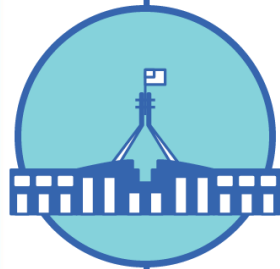
Data as at:
14 Jul 2022



61,066,360 total vaccine
doses administered nationally as at 14 July
+ 118,101 recorded in the last 24 hours



21,377,024
doses administered by state
and territory facilities
+ 10,743
recorded in the last 24 hours



39,689,336
doses administered by
commonwealth facilities
+ 107,358
recorded in the last 24 hours

38,367,437 total vaccine doses
administered in primary care settings
1,321,899 total vaccine doses
administered in aged care and disability
settings

NSW	Jurisdictions	Commonwealth
Cumulative	5,155,370	13,798,087
Daily increase	748	35,801

VIC	Jurisdictions	Commonwealth
Cumulative	6,147,245	9,840,067
Daily increase	2,461	26,137

QLD	Jurisdictions	Commonwealth
Cumulative	3,869,244	7,699,212
Daily increase	1,320	23,509

WA	Jurisdictions	Commonwealth
Cumulative	2,548,833	4,157,274
Daily increase	2,624	9,587

TAS	Jurisdictions	Commonwealth
Cumulative	633,182	754,907
Daily increase	468	2,111

SA	Jurisdictions	Commonwealth
Cumulative	1,860,145	2,400,397
Daily increase	2,327	7,242

ACT	Jurisdictions	Commonwealth
Cumulative	815,309	787,405
Daily increase	699	2,361

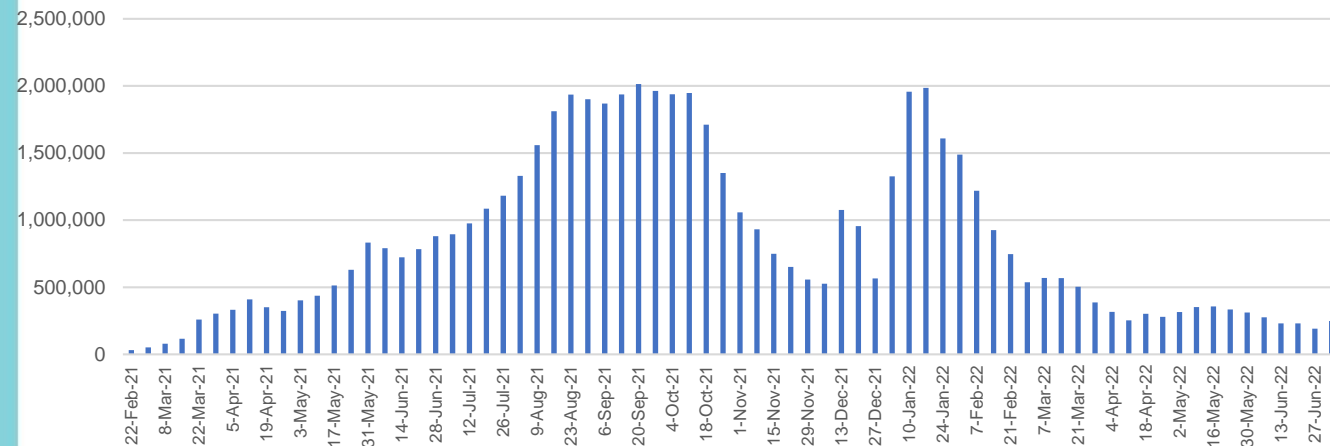
NT	Jurisdictions	Commonwealth
Cumulative	347,696	251,987
Daily increase	96	610

Vaccine milestone charts

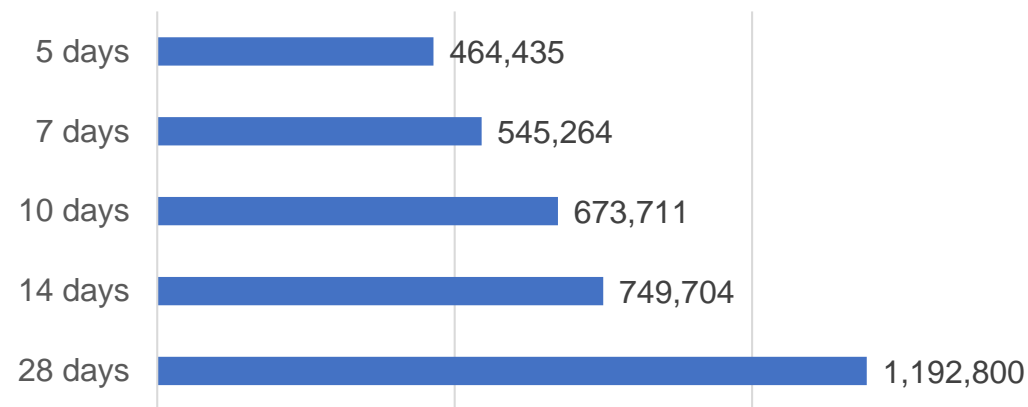
Data as at:
14 Jul 2022

Australia's COVID-19
Vaccine Roadmap

Doses Administered by Week

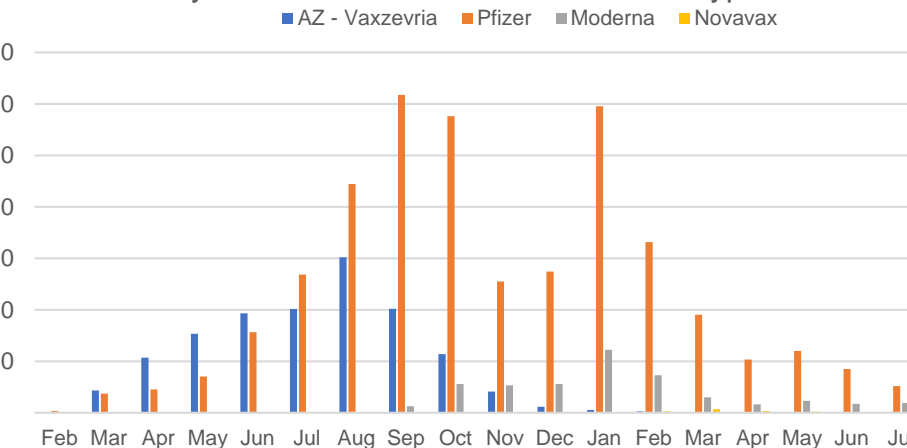


Doses Reported

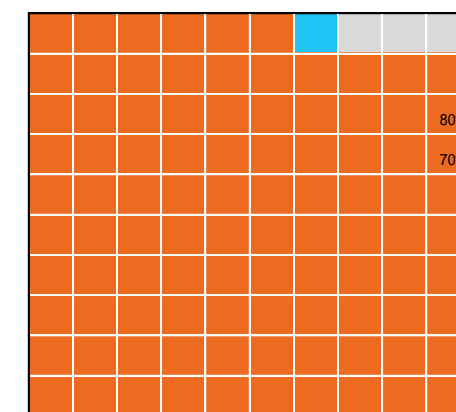


*Sourced from the Australian Immunisation Register.

Doses by administration month and vaccine type



Eligible population percentage coverage



*Each square represents 1% of the national population.
Squares are filled as milestones are achieved.

Doses by age and sex

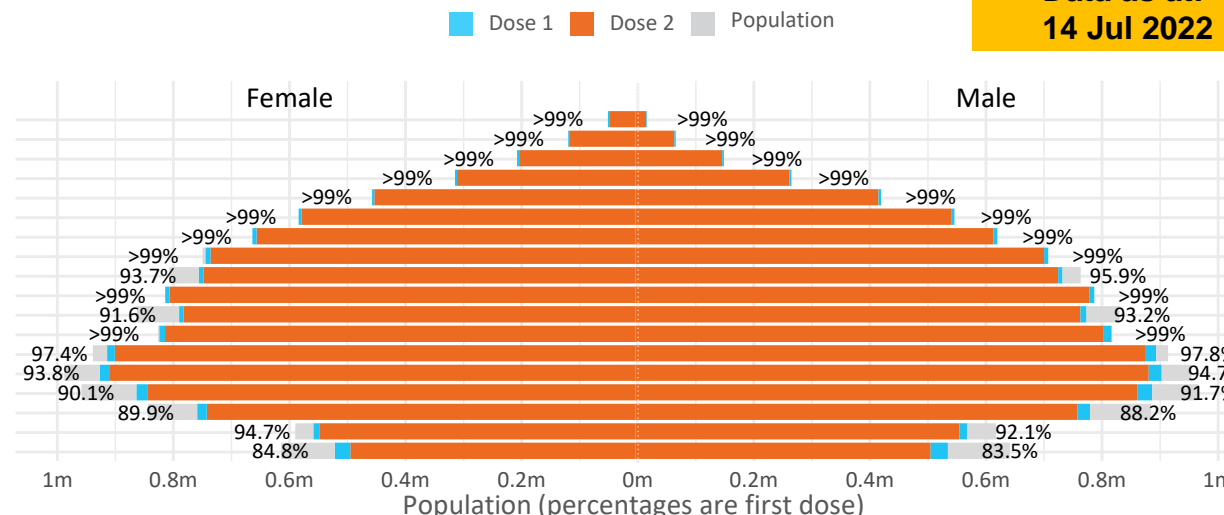
First and second doses by age and sex

Australia's COVID-19
Vaccine Roadmap

Data as at:
14 Jul 2022

	16+	50+	12-15	5-11
Dose 1	97.64% (20,133,921 doses / 20,619,959 people)	>99% (8,946,457 doses / 8,749,703 people)	84.17% (1,047,114 doses / 1,243,990 people)	52.28% (1,190,280 doses / 2,276,638 people)
Dose 2	96.00% (19,795,244 doses / 20,619,959 people)	>99% (8,837,766 doses / 8,749,703 people)	79.66% (990,909 doses / 1,243,990 people)	40.15% (914,077 doses / 2,276,638 people)

Age	Dose 1	Dose 2
95+	66,693 (>99%)	63,223 (>99%)
90-94	183,625 (>99%)	178,120 (>99%)
85-89	353,408 (>99%)	346,678 (>99%)
80-84	574,722 (>99%)	567,545 (>99%)
75-79	869,587 (>99%)	861,020 (>99%)
70-74	1,120,679 (>99%)	1,109,148 (>99%)
65-69	1,273,768 (>99%)	1,258,665 (>99%)
60-64	1,440,642 (>99%)	1,423,878 (>99%)
55-59	1,475,872 (94.9%)	1,459,038 (93.8%)
50-54	1,587,461 (>99%)	1,570,451 (>99%)
45-49	1,550,502 (92.5%)	1,532,039 (91.4%)
40-44	1,628,349 (>99%)	1,604,337 (>99%)
35-39	1,795,570 (97.9%)	1,763,226 (96.1%)
30-34	1,821,050 (94.7%)	1,778,809 (92.5%)
25-29	1,744,120 (91.5%)	1,696,013 (89.0%)
20-24	1,530,694 (89.4%)	1,490,017 (87.0%)
16-19	1,117,179 (93.4%)	1,093,037 (91.4%)
12-15	1,047,114 (84.2%)	990,909 (79.7%)

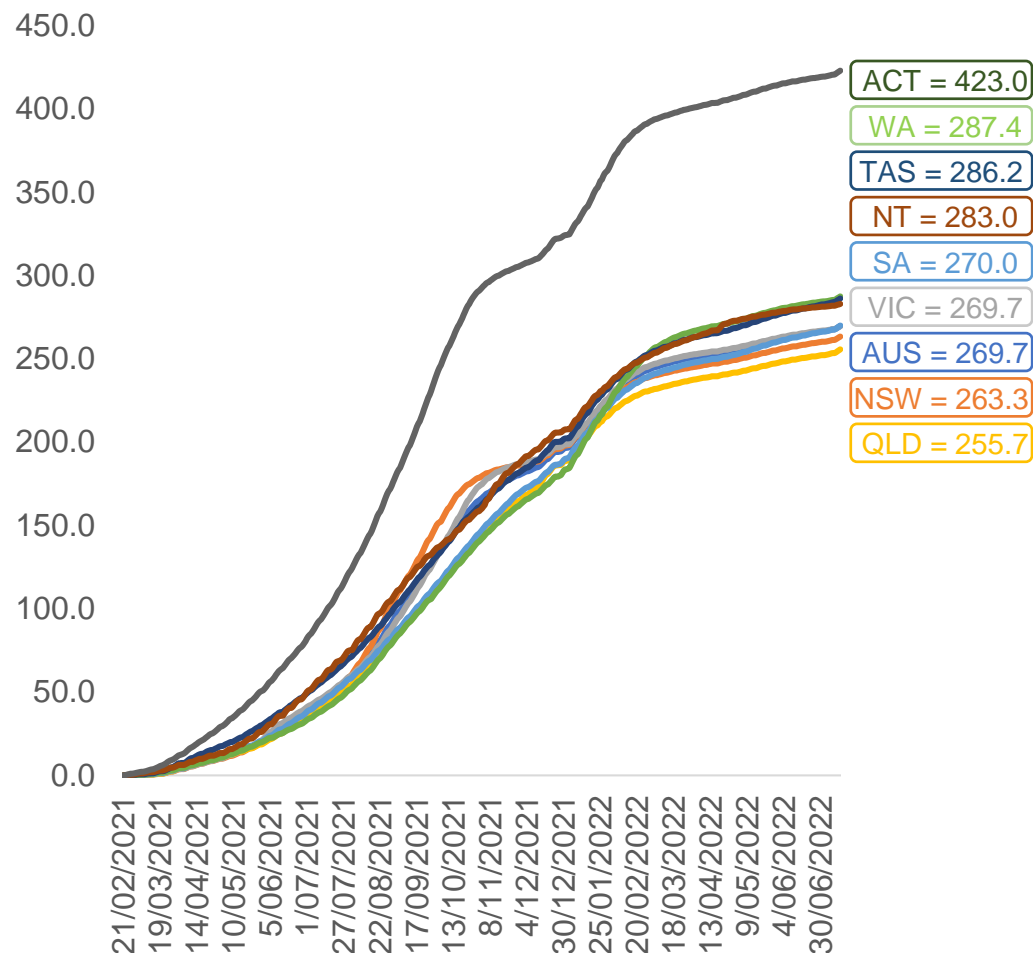


	AUS	ACT	NSW	NT	QLD	SA	TAS	VIC	WA
16 and over - dose 1	20,133,921	353,847	6,350,384	173,992	3,879,920	1,381,034	446,410	5,181,083	2,103,157
16 and over - dose 2	19,795,244	348,070	6,251,089	169,305	3,816,032	1,351,667	437,417	5,101,866	2,071,960
16 and over - population	20,619,959*	344,037	6,565,651	190,571	4,112,707	1,440,400	440,172	5,407,574	2,114,978
16 and over % with dose 1	97.64%	>99%	96.72%	91.30%	94.34%	95.88%	>99%	95.81%	>99%
16 and over % with dose 2	96.00%	>99%	95.21%	88.84%	92.79%	93.84%	>99%	94.35%	97.97%
5 to 11 - dose 1	1,190,280	31,737	356,204	13,106	206,085	83,446	28,399	324,045	139,812
5 to 11 - dose 2	914,077	27,599	280,565	8,840	152,030	64,507	23,301	249,104	103,533
5 to 11 - population	2,276,638	39,789	716,460	24,750	478,731	148,816	45,033	578,499	244,154
5 to 11 % with dose 1	52.28%	79.76%	49.72%	52.95%	43.05%	56.07%	63.06%	56.01%	57.26%
5 to 11 % with dose 2	40.15%	69.36%	39.16%	35.72%	31.76%	43.35%	51.74%	43.06%	42.40%
12 to 15 - dose 1	1,047,114	20,123	322,165	10,715	205,120	68,113	22,787	273,626	115,363
12 to 15 - dose 2	990,909	19,566	307,819	9,647	191,478	64,345	21,678	261,723	106,758
12 to 15 - population	1,243,990	19,693	390,330	13,060	270,146	82,747	26,308	308,611	132,869
12 to 15 % with dose 1	84.17%	>99%	82.54%	82.04%	75.93%	82.31%	86.62%	88.66%	86.82%
12 to 15 % with dose 2	79.66%	>99%	78.86%	73.87%	70.88%	77.76%	82.40%	84.81%	80.35%

*National population will not equal sum of listed jurisdictions due to a small number of people counted in national population residing in some 'other' territories. Sum of state doses will not add to national total as some records are unable to be geocoded to a State or Territory.
Doses sourced from Australian Immunisation Register, population from ABS ERP June 2020

Vaccinations by location

Cumulative total doses administered vs eligible state populations*

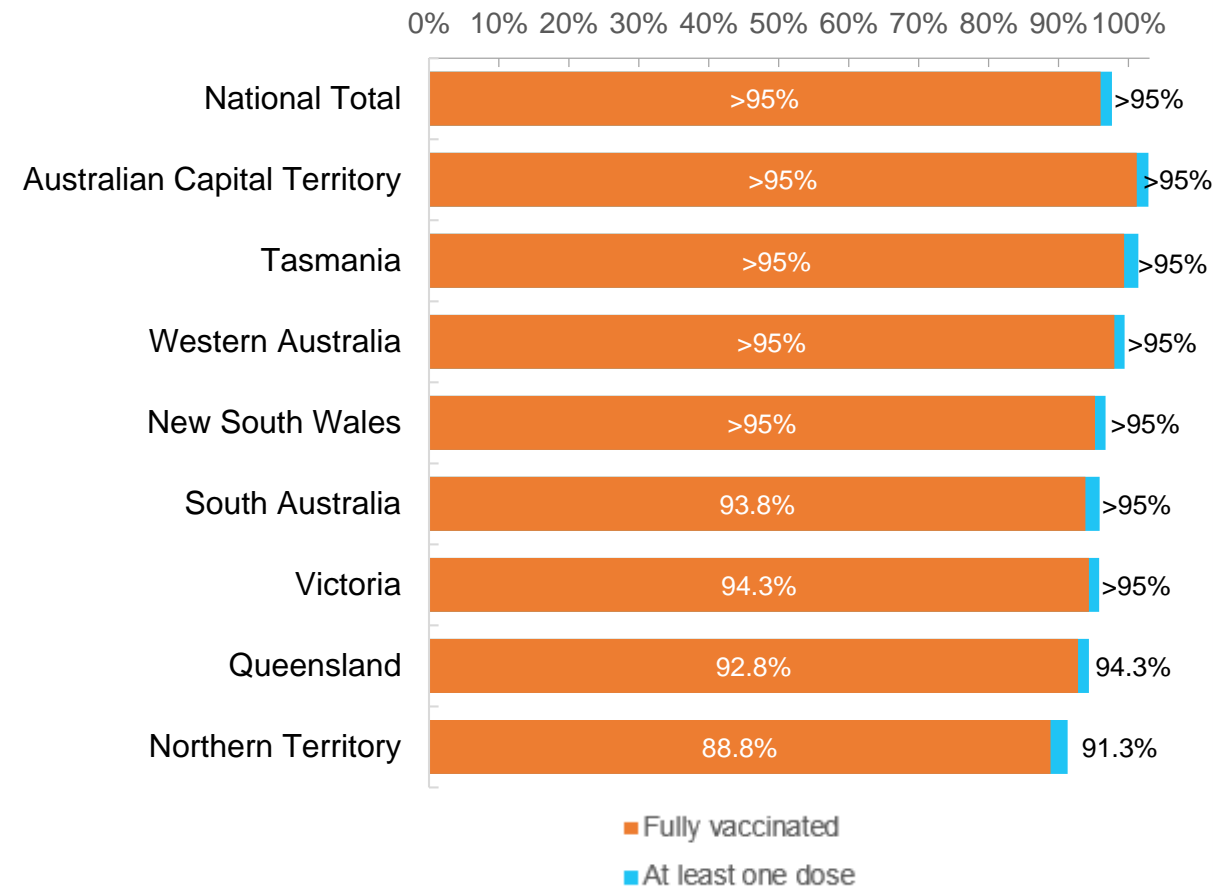


*Not an indication of percentage vaccinated, numbers will exceed 100 due to multiple doses required per person of the population. All doses are included for those aged 12 and above, and are based on vaccination provider location.

Data as at:
14 Jul 2022

Australia's COVID-19
Vaccine Roadmap

First and Second Doses by residential location



Aboriginal and Torres Strait Islander peoples

Number of people vaccinated

Data as at:
12 Jul 2022
Updated weekly

Australia's COVID-19
Vaccine Roadmap



444,318

people over the age of 16
have had at least one dose

85.0%

of people over the age of 16
have had at least one dose



426,102

people over the age of 16
are fully vaccinated

81.5%

of people over the age of 16 are
fully vaccinated



People aged 12 – 15 years

47,760

41,838

67.6%

At least one dose

59.3%

Fully vaccinated

178 Aboriginal community controlled health services (ACCHS)

0#
ACT

50
NSW

27
NT

44
QLD

12
SA

3
TAS

21
VIC

21
WA

Medicare Address State ^{##}	Individuals Dose 1	Individuals Dose 1 %	Individuals Dose 2	Individuals Dose 2 %
Australian Capital Territory	4,800	91.8%	4,681	89.6%
New South Wales	136,312	87.3%	133,265	85.4%
Northern Territory	41,316	89.8%	39,372	85.5%
Queensland	116,837	81.9%	111,512	78.1%
South Australia	20,128	80.7%	18,761	75.2%
Tasmania	13,904	88.9%	13,505	86.3%
Victoria	35,751	90.5%	34,958	88.5%
Western Australia	53,748	86.8%	50,161	81.0%
Unknown/Other Territories	21,522	70.5%	19,887	65.2%
Totals	444,318	85.0%	426,102	81.5%

Source: Australian Immunisation Register

*Identifying as Aboriginal and Torres Strait Islander is optional and the estimated population may be under reported.

**Includes all Aboriginal and Torres Strait Islander peoples who have received a vaccination, not limited to those administered in an ACCHS setting

#ACCHS in the ACT are currently operating as a Commonwealth Vaccine Clinics so not included to avoid double counting

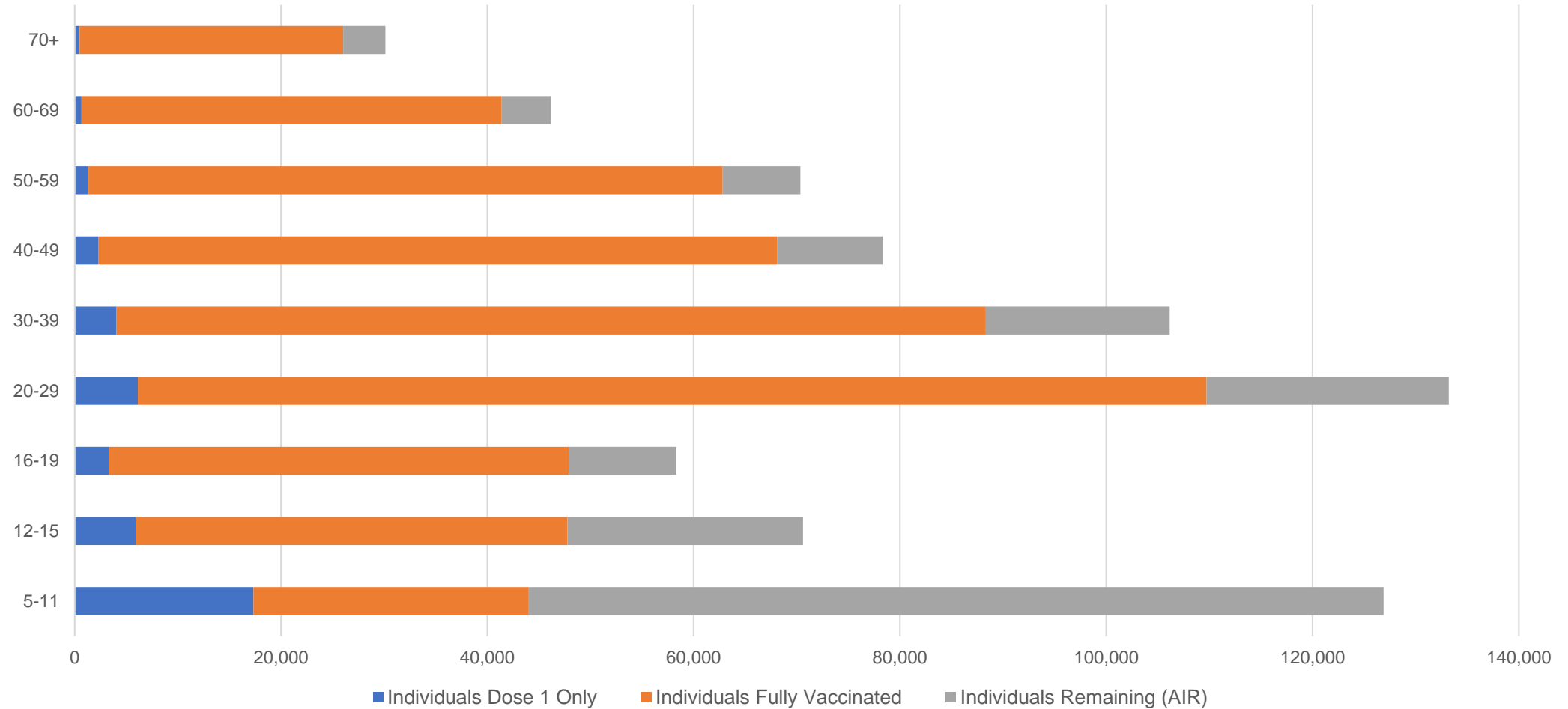
##The above table includes all identified Aboriginal and Torres Strait Islander people who are aged 16 and above by their state of residence.

Aboriginal and Torres Strait Islander peoples

Number of people vaccinated by age

Data as at:
12 Jul 2022
Updated weekly

Australia's COVID-19
Vaccine Roadmap



Source: Australian Immunisation Register

Commonwealth primary care

Data as at:
14 Jul 2022

Australia's COVID-19
Vaccine Roadmap



Primary care vaccine administration sites

5,699	121	178	3,614
GPs	CVCs	ACCHS	Pharmacies



38,367,437 total vaccine doses administered
primary care settings as at 14 July
+ 106,734 recorded in the last 24 hours

Primary care vaccinations by provider type

	Doses administered	Daily increase	7 day increase
General Practice* includes other Commonwealth	30,476,557	53,719	246,379
Pharmacy	7,890,880	53,015	242,480

NSW
13,224,749
(+35,651 daily increase)

VIC
9,507,601
(+26,118 daily increase)

QLD
7,412,053
(+22,878 daily increase)

WA
4,016,063
(+9,496 daily increase)

TAS
734,066
(+2,125 daily increase)

SA
2,319,052
(+7,310 daily increase)

ACT
609,645
(+2,304 daily increase)

NT
225,543
(+529 daily increase)

318,665

doses administered to persons
residing in other territories or with
missing residential information

*General practice includes Commonwealth Vaccination Clinics, Aboriginal Community Health Centres, Royal Flying Doctor Service and other Commonwealth vaccination facilities

Source: Australian Immunisation Register

Data as at:
14 Jul 2022

Commonwealth aged care and disability doses administered



1,321,899 (+ 624 last 24 hours)

Total vaccine doses administered in aged care and disability facilities as at 14 July

Number of doses administered as part of the Commonwealth aged and disability care rollout

NSW
573,049
(+64 daily increase)

VIC
248,257
(+146 daily increase)

QLD
210,779
(+55 daily increase)

WA
112,899
(+53 daily increase)

TAS
23,760
(<10 daily increase)

SA
86,556
(<10 daily increase)

ACT
17,960
(<10 daily increase)

NT
7,706
(<10 daily increase)

40,933

doses administered to persons
residing in other territories or with
missing residential information

*Sourced from the Australian Immunisation Register. Includes all persons vaccinated at participating residential aged care, disability and related industry settings.

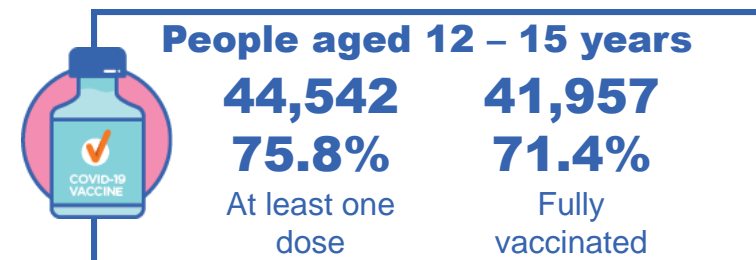
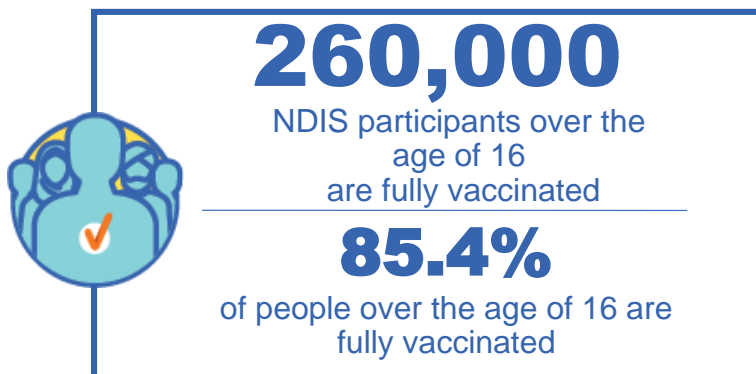
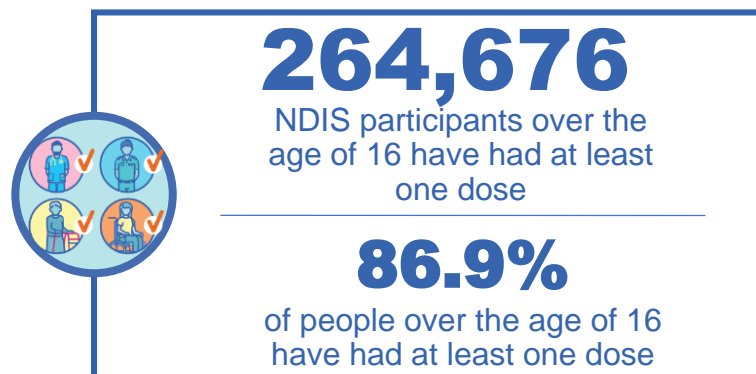
**State level breakdown indicates the residential location and may not align to the state in which the vaccination occurred.

Source: Australian Immunisation Register

National Disability Insurance Scheme (NDIS) reported vaccinations

Data as at:
14 July 2022
Updated weekly

Australia's COVID-19
Vaccine Roadmap



NDIS participant vaccinations

	People aged 16+ with at least one dose	People aged 16+ fully vaccinated	% People aged 16+ with at least one dose	% People aged 16+ fully vaccinated
ACT	4,971	4,909	89.0%	87.9%
NSW	80,935	79,680	87.5%	86.1%
NT	2,295	2,226	77.6%	75.3%
QLD	52,594	51,599	85.1%	83.5%
SA	21,694	21,201	84.6%	82.7%
TAS	6,619	6,467	87.2%	85.2%
VIC	70,267	69,110	88.1%	86.6%
WA	25,301	24,808	88.2%	86.5%
National	264,676	260,000	86.9%	85.4%

Source: Linkage between National Disability Insurance Agency data and the Australian Immunisation Register. Total NDIS participant numbers as at 30 June. Australian Immunisation Register data as at 13 July. Includes all participants regardless of residence type.

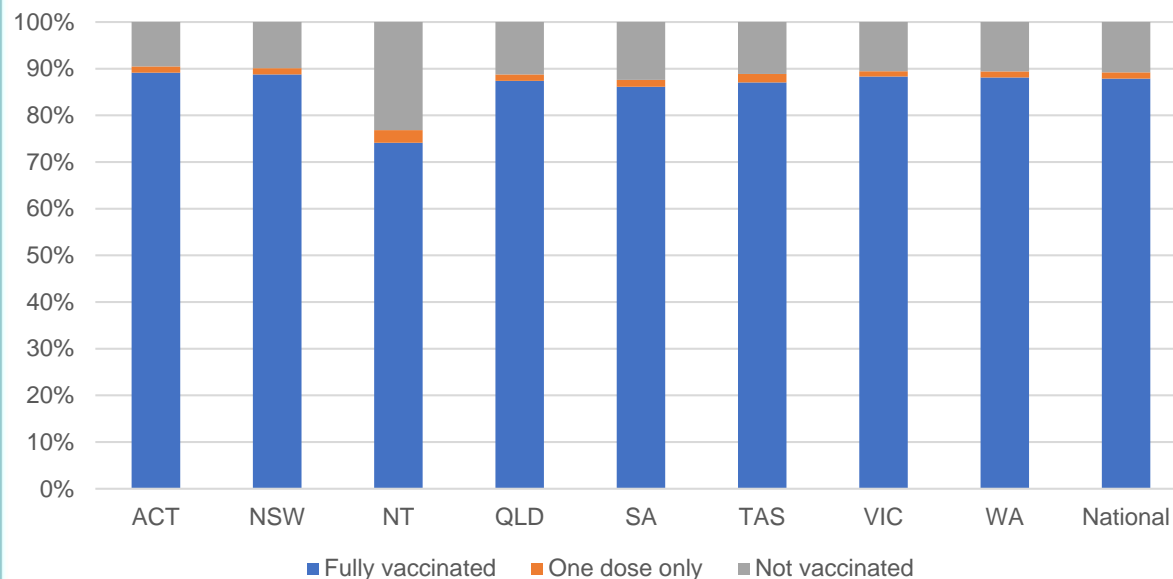
National Disability Insurance Scheme (NDIS) reported vaccinations

Data as at:
14 July 2022
Updated weekly

Australia's COVID-19
Vaccine Roadmap

NATIONAL	Total people with at least one dose	People fully vaccinated	Total number of individuals in cohort	% People with at least one dose	% People fully vaccinated
NDIS participants living in disability accommodation	21,273	20,955	23,858	89.2%	87.8%

NDIS participants in disability and aged care accommodation



Source: Linkage between National Disability Insurance Agency data and the Australian Immunisation Register. Includes participants residing in disability accommodation only.

Source: Total NDIS participant numbers as at 30 June. Participant data as at 12 July. Australian Immunisation Register data as at 13 July. Worker data as at 14 July.

NDIS workforce vaccinations

	NDIS workers with at least one dose	NDIS workers fully vaccinated	% NDIS workers with at least one dose	% NDIS workers fully vaccinated
NSW	128,234	123,322	98.3%	94.6%
VIC	117,646	114,405	98.5%	95.8%
QLD	71,568	70,714	97.9%	96.7%
WA	34,532	33,143	98.9%	95.0%
SA	35,309	33,574	98.5%	93.7%
TAS	12,410	12,025	98.5%	95.4%
ACT	12,343	12,316	99.8%	99.6%
NT	3,967	3,819	99.6%	95.9%
TOTAL	416,009	403,318	98.4%	95.4%

Source: the NDIS Commission has established a requirement for registered NDIS providers who provide intensive disability support services to report on the vaccination status of workers they employ, or otherwise engage, to deliver NDIS-funded supports and services, and who are required to be vaccinated in accordance with in-force state and territory public health orders. The statistics reflect data reported to the NDIS Commission by registered NDIS providers and should be considered indicative and subject to change.

Note: Some registered NDIS providers are yet to report on the vaccination status of their workforce. The NDIS Commission is working with those providers around reporting requirements.

Remaining workers not included include those exempt from vaccination requirements, workers whose vaccination status is not yet verified by the provider (such as workers on leave) and provider reporting anomalies.

Residential aged care vaccination rollout

Residential aged care facilities status

175,388

People fully vaccinated

176,630

People with at least one dose

Australia's COVID-19 Vaccine Roadmap

Data as at:
14 July 2022
Updated weekly

Aged care resident vaccinations



Aged care worker vaccinations

Jurisdictions	Total workers with at least one dose	Workers fully vaccinated	% Workers with at least one dose	% Workers fully vaccinated
NSW	77,174	77,049	99.9%	99.7%
VIC	70,741	70,739	100.0%	100.0%
QLD	48,729	48,716	100.0%	100.0%
SA	26,657	26,647	100.0%	100.0%
WA	24,860	24,855	100.0%	100.0%
TAS	7,546	7,546	100.0%	100.0%
NT	925	925	100.0%	100.0%
ACT	2,965	2,965	100.0%	100.0%
Total	259,597	259,442	100.0%	99.9%

Source: Residential aged care provider self-reported COVID-19 vaccination information

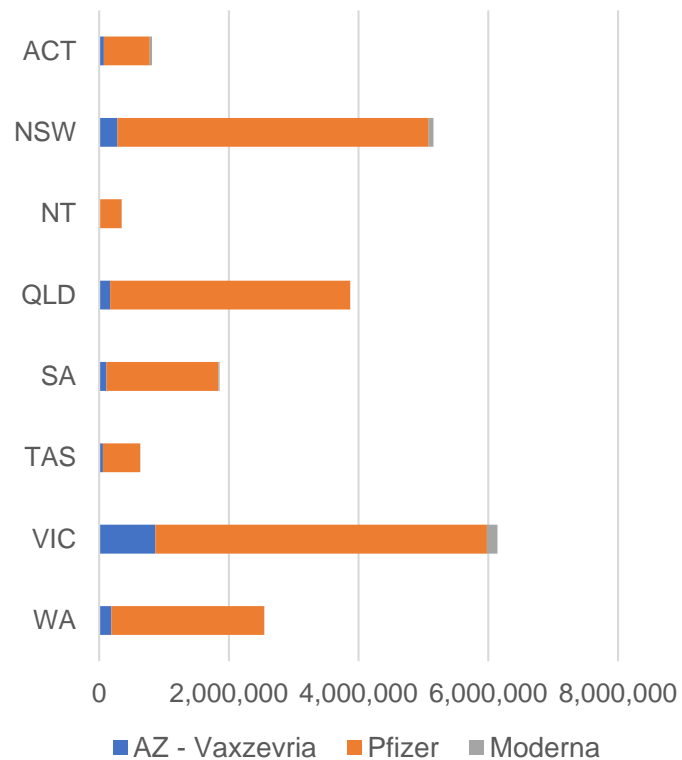
*Status updates are provided by facilities at least once per week. Reporting is updated Monday to Friday to encompass different facility updates being made on different days.

Data is sourced directly from Aged Care Service Providers and is not drawn or closely aligned with data from AIR due to inconsistencies and potential lags in uploading of records.

Data as at:
14 Jul 2022

Jurisdiction administered

Total vaccine doses administered in State and Territory clinics as at 14 July



21,377,024 total vaccine doses administered
in State and Territory clinics as at 14 July
+ **10,743** recorded in the last 24 hours
+ **54,256** recorded in the last 7 days

NSW
5,155,370
(+748 daily increase)

VIC
6,147,245
(+2,461 daily increase)

QLD
3,869,244
(+1,320 daily increase)

WA
2,548,833
(+2,624 daily increase)

TAS
633,182
(+468 daily increase)

SA
1,860,145
(+2,327 daily increase)

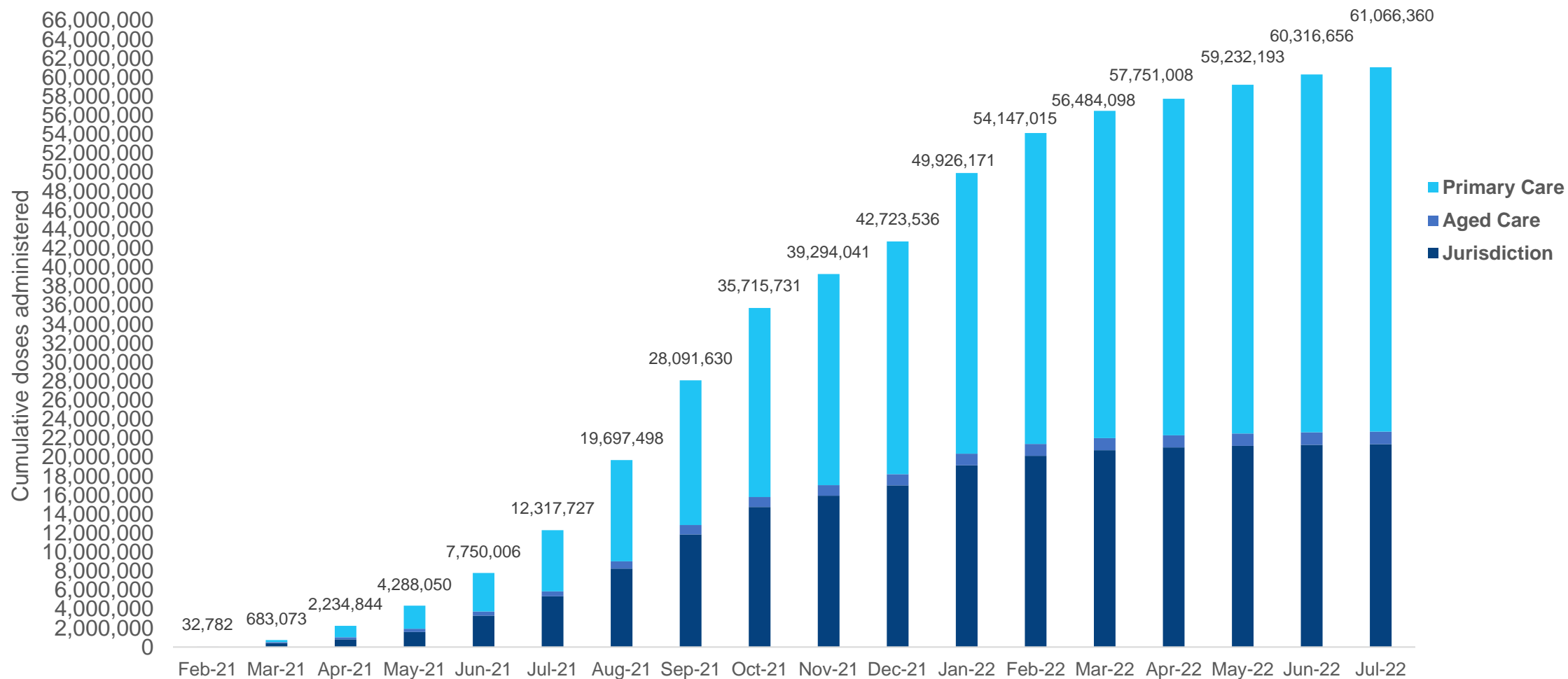
ACT
815,309
(+699 daily increase)

NT
347,696
(+96 daily increase)

*Sourced from the Australian Immunisation Register. Numbers are calculated as difference in daily cumulative reported numbers to allow for historical corrections.

Cumulative doses administered by channel

Data as at:
14 Jul 2022

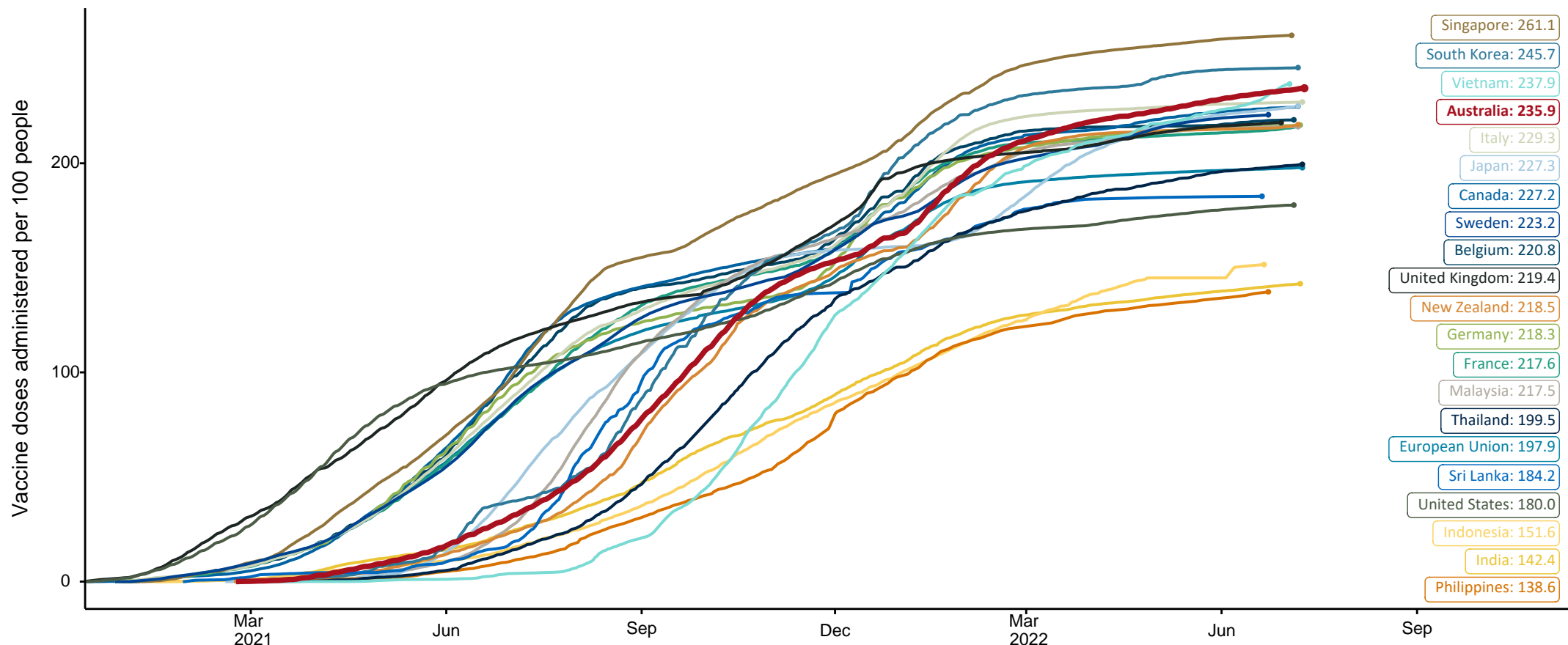


Source: Australian Immunisation Register

COVID-19 vaccine doses per 100, Australia and select countries

Data as at:
10 July 2022
Updated weekly

Australia's COVID-19
Vaccine Roadmap



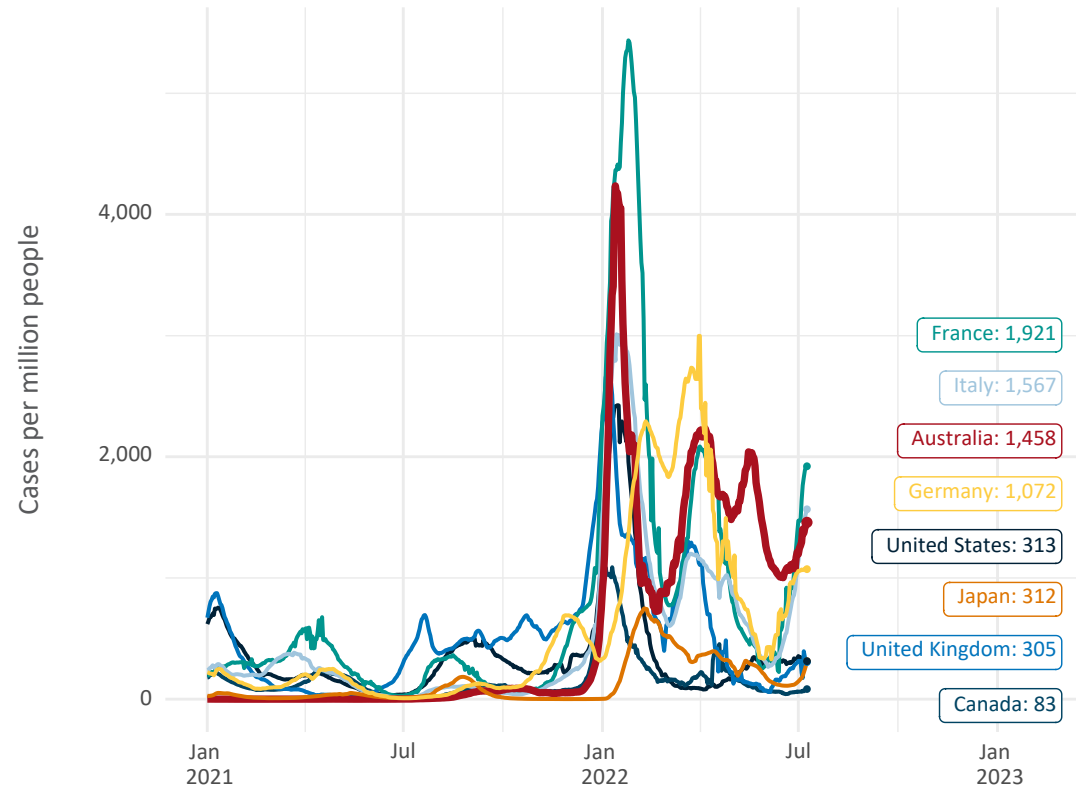
Note: From 11 January 2022, data for Australia includes all doses administered to people 5 and over. Prior to 11 January, data was for 12 and over.
Source: Department of Health (Australia), Our World in Data (international)
Latest data: 10 July

International data – COVID-19

Australia's COVID-19
Vaccine Roadmap

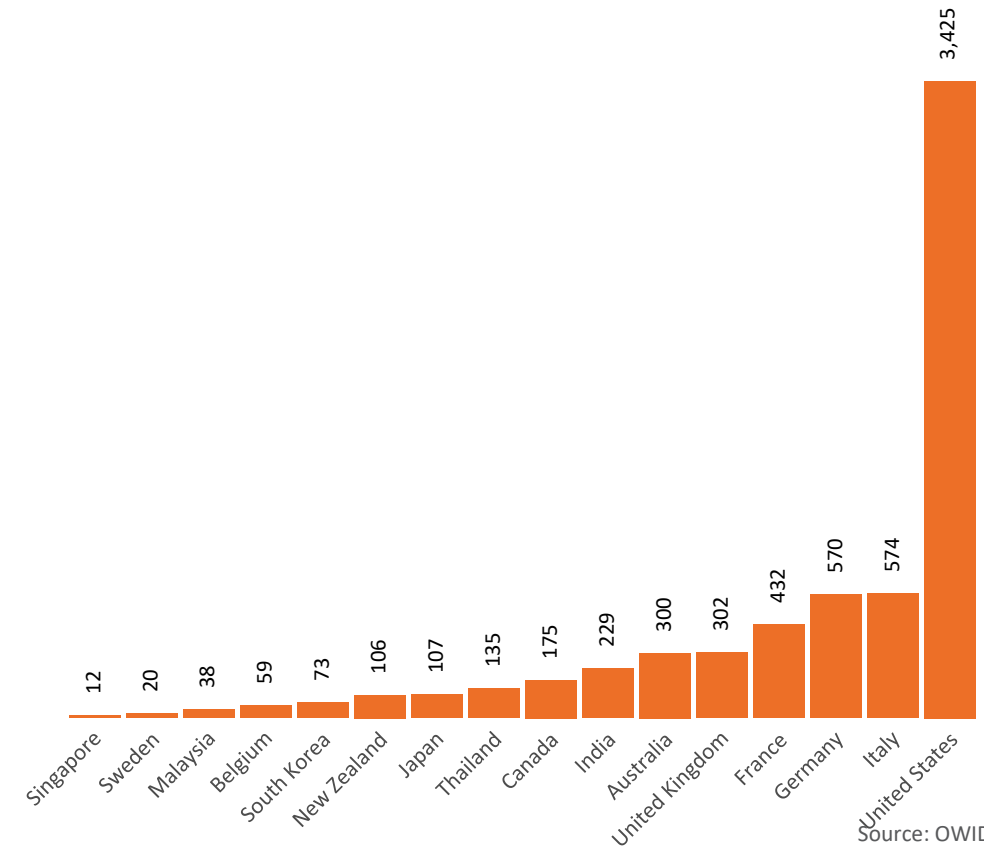
Data as at:
10 July 2022
Updated weekly

New daily cases per million since 2021, Australia and G7 countries
Smoothed - 7 day average



Source: OWID
Data downloaded: 11 Jul 2022 09:21
Latest data: 09 Jul 2022

COVID-19 deaths in past 7 days - Australia and select countries



Source: OWID
Data downloaded: 11 Jul 2022 09:21
Latest data: 09 Jul 2022