



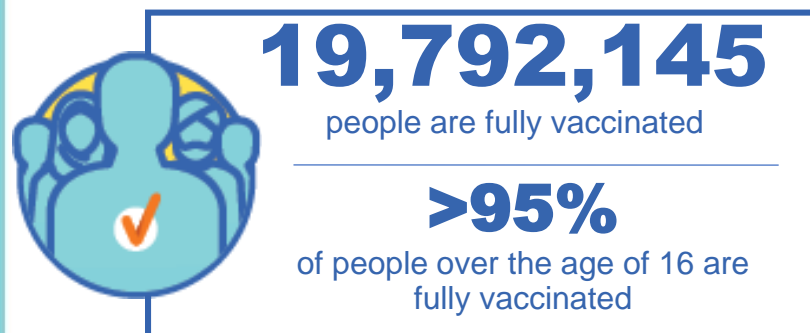
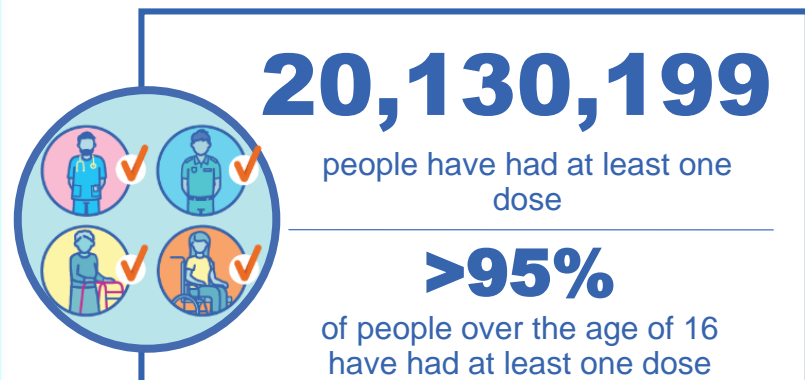
Australian Government
Operation COVID Shield

COVID-19 Vaccine Roll-out

13 July 2022

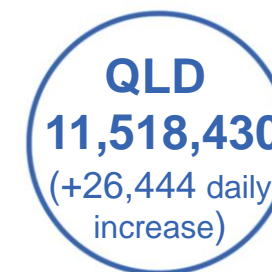
Data as at:
12 Jul 2022

Total vaccine doses



60,831,080 total vaccine
doses administered nationally as at 12 July

+119,985 recorded in the last 24 hours

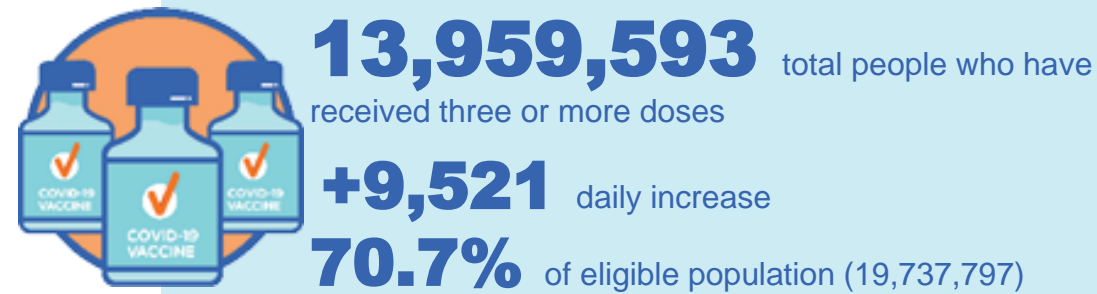
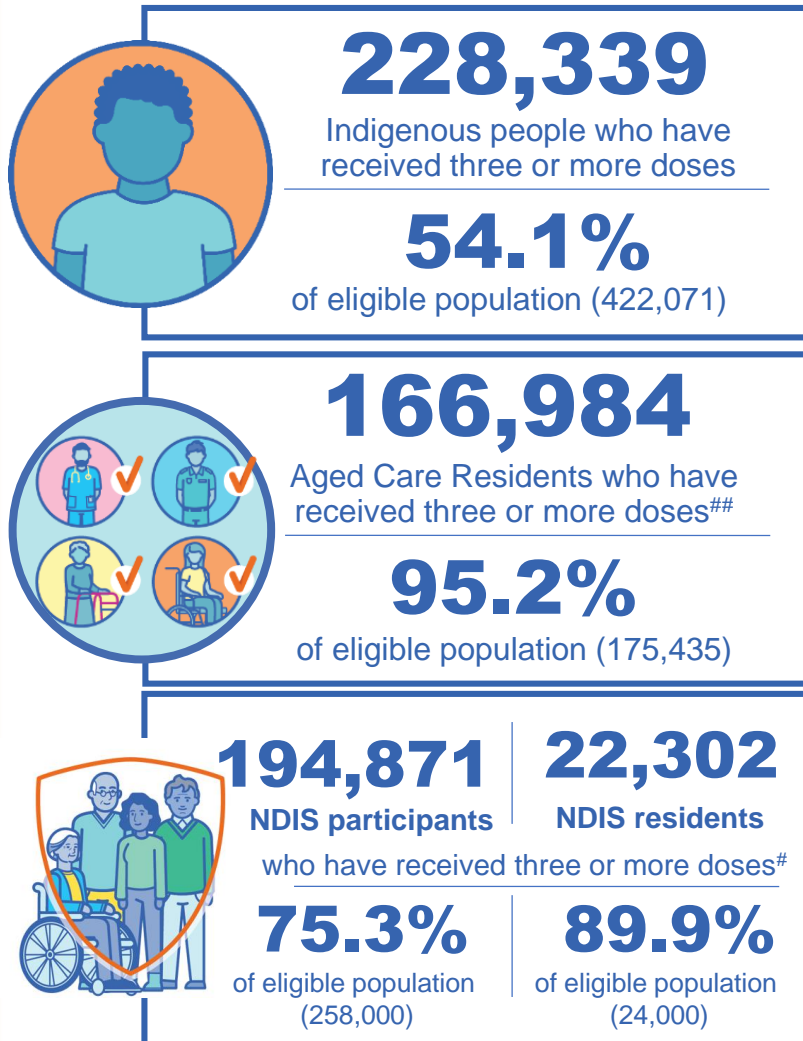


*Administration state breakdown indicates state in which a vaccine was administered

**Overall dose count includes instances of more than three doses per person in a small number of cases.

Source: Australian Immunisation Register

Booster Vaccinations



Data as at:
12 Jul 2022

	Number of People	Daily Increase	% of Eligible
NSW	4,264,003	3,509	68.4%
VIC	3,718,124	1,969	73.0%
QLD	2,421,979	2,139	63.7%
WA	1,708,149	648	82.8%
SA	1,001,138	774	74.4%
TAS	319,367	175	73.3%
ACT	275,320	137	79.2%
NT	131,789	39	78.2%

*People may belong to multiple groups and could be represented in the above breakdowns multiple times.
NDIS participants data as at 10 July 2022. ## Aged Care Residents data as at 12 July 2022.

Source: Australian Immunisation Register

119,724 doses administered to persons residing in other territories or with missing residential information

Fourth Doses

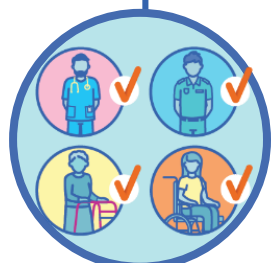
Data as at:
12 Jul 2022

Australia's COVID-19
Vaccine Roadmap



2,763,454 total people (16+) who have received four or more doses

+104,722 daily increase



2,290,510

People aged 65+ who have received
four or more doses

59.9%

of eligible population (3,823,590)



95,658

Aged Care Residents who have
received four or more doses[#]

68.3%

of eligible population (139,978)

	Number of People 16+	Daily Increase
ACT	52,799	2,055
NSW	891,464	33,201
NT	11,901	497
QLD	538,225	22,741
SA	224,437	8,230
TAS	77,520	2,525
VIC	677,086	24,048
WA	276,573	10,972

13,449 doses administered to persons
residing in other territories or with
missing residential information

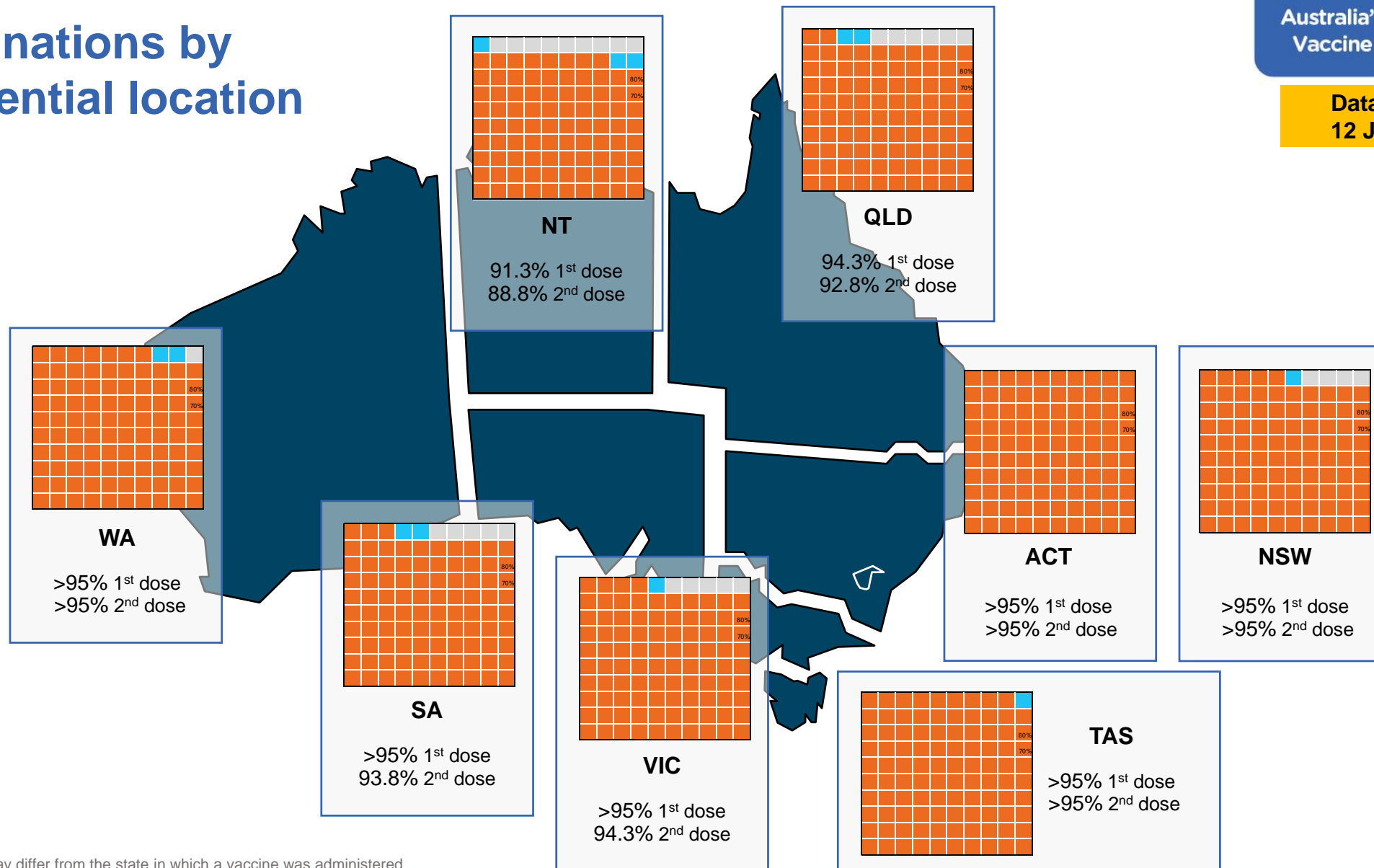
*People become eligible for a fourth dose three months after their third dose. Individuals may belong to multiple groups and could be represented in the above multiple times.
[#]Aged Care Residents data as at 11 July 2022.

Source: Australian Immunisation Register

Vaccinations by residential location

Australia's COVID-19
Vaccine Roadmap

Data as at:
12 Jul 2022



*Residential state may differ from the state in which a vaccine was administered

Commonwealth and Jurisdiction vaccine doses administered

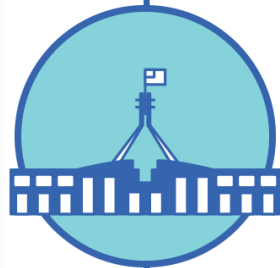
Data as at:
12 Jul 2022



60,831,080 total vaccine
doses administered nationally as at 12 July
+ 119,985 recorded in the last 24 hours



21,354,083
doses administered by state
and territory facilities
+ 12,406
recorded in the last 24 hours



39,476,997
doses administered by
commonwealth facilities
+ 107,579
recorded in the last 24 hours

38,156,308 total vaccine doses
administered in primary care settings
1,320,689 total vaccine doses
administered in aged care and disability
settings

NSW	Jurisdictions	Commonwealth
Cumulative	5,152,219	13,727,825
Daily increase	2,494	36,153

VIC	Jurisdictions	Commonwealth
Cumulative	6,142,284	9,789,405
Daily increase	2,384	24,471

QLD	Jurisdictions	Commonwealth
Cumulative	3,866,748	7,651,682
Daily increase	1,056	25,388

WA	Jurisdictions	Commonwealth
Cumulative	2,543,624	4,137,990
Daily increase	2,927	9,254

TAS	Jurisdictions	Commonwealth
Cumulative	632,242	750,699
Daily increase	716	2,076

SA	Jurisdictions	Commonwealth
Cumulative	1,855,533	2,385,618
Daily increase	2,134	7,246

ACT	Jurisdictions	Commonwealth
Cumulative	813,845	782,929
Daily increase	647	2,342

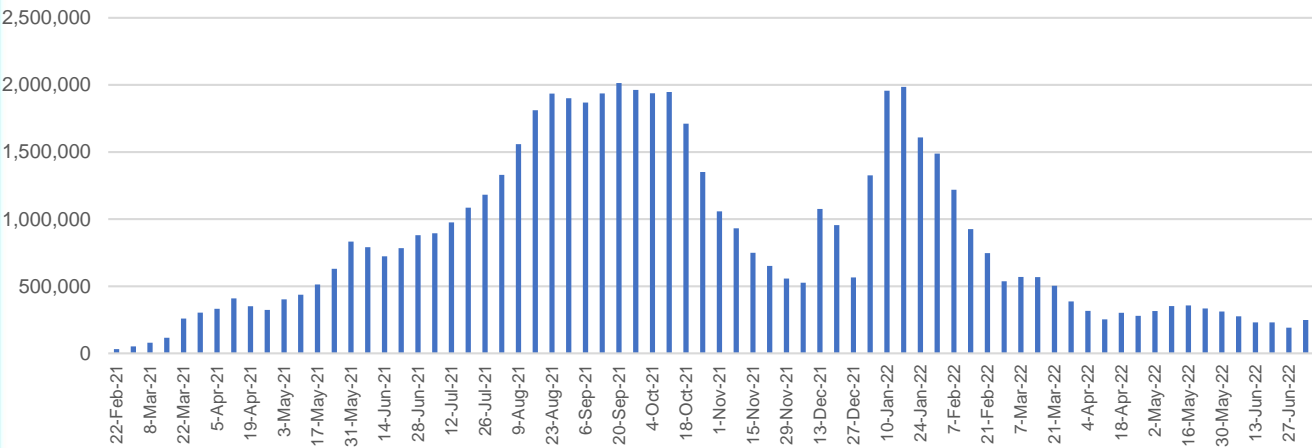
NT	Jurisdictions	Commonwealth
Cumulative	347,588	250,849
Daily increase	48	649

Vaccine milestone charts

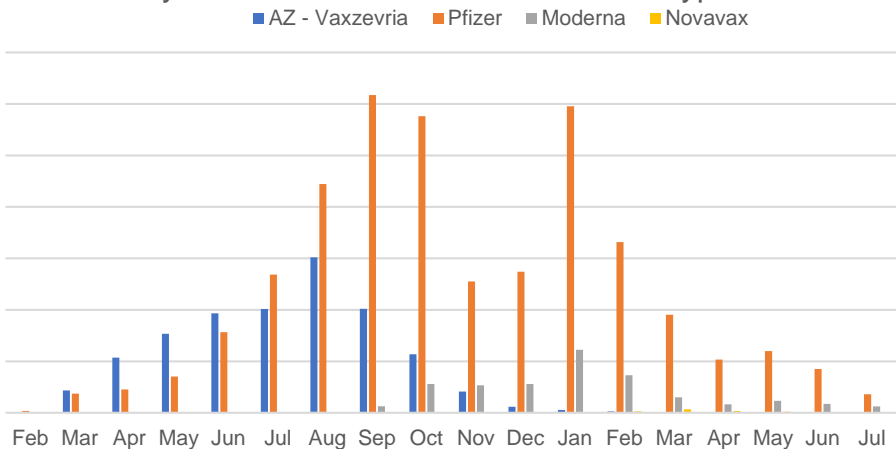
Data as at:
12 Jul 2022

Australia's COVID-19
Vaccine Roadmap

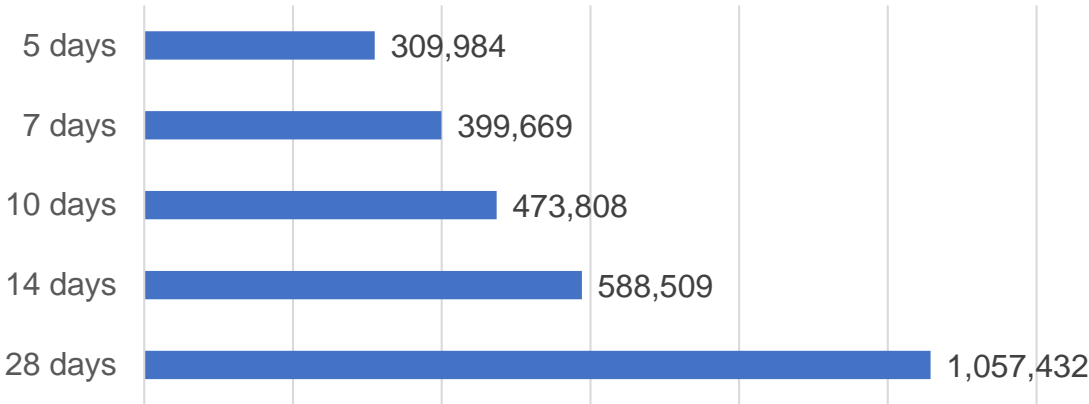
Doses Administered by Week



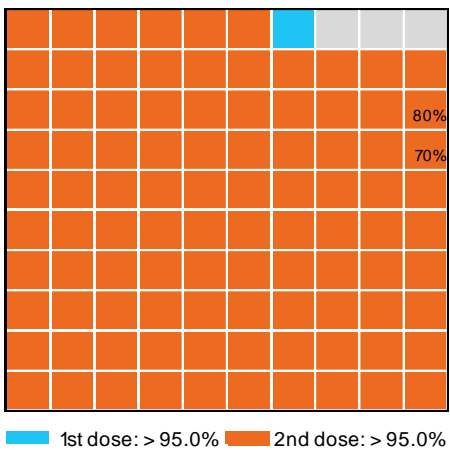
Doses by administration month and vaccine type



Doses Reported



Eligible population percentage coverage



*Each square represents 1% of the national population.
Squares are filled as milestones are achieved.

*Sourced from the Australian Immunisation Register.

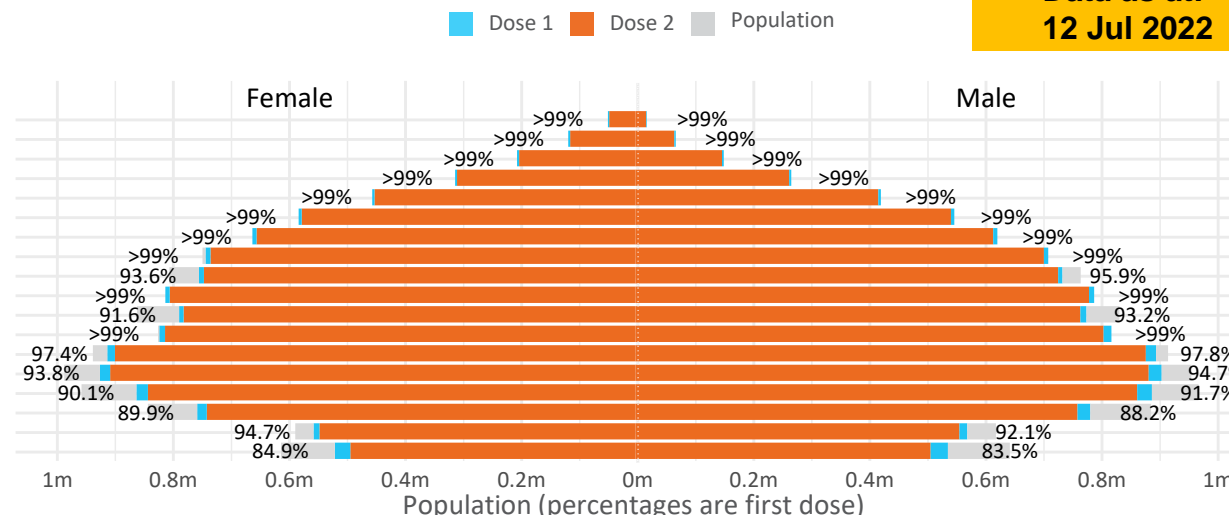
Doses by age and sex

First and second doses by age and sex

	16+	50+	12-15	5-11
Dose 1	97.62% (20,130,199 doses / 20,619,959 people)	>99% (8,943,680 doses / 8,749,703 people)	84.17% (1,047,090 doses / 1,243,990 people)	52.28% (1,190,171 doses / 2,276,638 people)
Dose 2	95.99% (19,792,145 doses / 20,619,959 people)	>99% (8,835,296 doses / 8,749,703 people)	79.65% (990,889 doses / 1,243,990 people)	40.06% (912,040 doses / 2,276,638 people)

Data as at:
12 Jul 2022

Age	Dose 1	Dose 2
95+	66,562 (>99%)	63,097 (>99%)
90-94	183,472 (>99%)	177,966 (>99%)
85-89	353,140 (>99%)	346,408 (>99%)
80-84	574,426 (>99%)	567,274 (>99%)
75-79	869,029 (>99%)	860,493 (>99%)
70-74	1,120,494 (>99%)	1,109,013 (>99%)
65-69	1,273,393 (>99%)	1,258,354 (>99%)
60-64	1,440,332 (>99%)	1,423,638 (>99%)
55-59	1,475,740 (94.9%)	1,458,957 (93.8%)
50-54	1,587,092 (>99%)	1,570,096 (>99%)
45-49	1,550,385 (92.5%)	1,531,978 (91.4%)
40-44	1,628,021 (>99%)	1,604,013 (>99%)
35-39	1,795,227 (97.8%)	1,762,924 (96.1%)
30-34	1,820,848 (94.7%)	1,778,684 (92.5%)
25-29	1,744,061 (91.5%)	1,696,005 (89.0%)
20-24	1,531,058 (89.4%)	1,490,433 (87.0%)
16-19	1,116,919 (93.4%)	1,092,812 (91.4%)
12-15	1,047,090 (84.2%)	990,889 (79.7%)

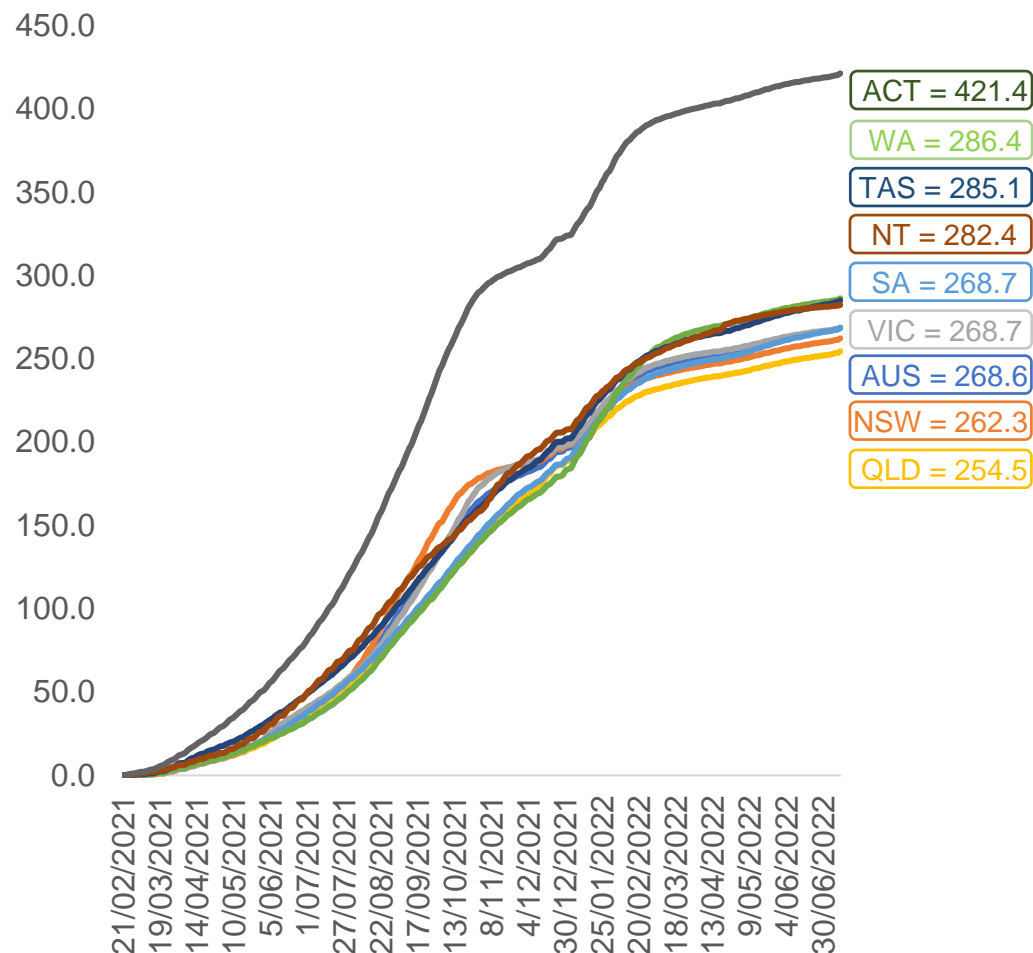


	AUS	ACT	NSW	NT	QLD	SA	TAS	VIC	WA
16 and over - dose 1	20,130,199	353,803	6,349,107	173,969	3,879,048	1,380,723	446,338	5,180,209	2,102,679
16 and over - dose 2	19,792,145	348,026	6,250,139	169,286	3,815,233	1,351,410	437,351	5,101,096	2,071,561
16 and over - population	20,619,959*	344,037	6,565,651	190,571	4,112,707	1,440,400	440,172	5,407,574	2,114,978
16 and over % with dose 1	97.62%	>99%	96.70%	91.29%	94.32%	95.86%	>99%	95.80%	>99%
16 and over % with dose 2	95.99%	>99%	95.19%	88.83%	92.77%	93.82%	>99%	94.33%	97.95%
5 to 11 - dose 1	1,190,171	31,716	355,913	13,120	206,106	83,472	28,391	324,137	139,840
5 to 11 - dose 2	912,040	27,536	279,541	8,833	151,803	64,304	23,275	248,860	103,283
5 to 11 - population	2,276,638	39,789	716,460	24,750	478,731	148,816	45,033	578,499	244,154
5 to 11 % with dose 1	52.28%	79.71%	49.68%	53.01%	43.05%	56.09%	63.04%	56.03%	57.28%
5 to 11 % with dose 2	40.06%	69.21%	39.02%	35.69%	31.71%	43.21%	51.68%	43.02%	42.30%
12 to 15 - dose 1	1,047,090	20,120	322,135	10,712	205,137	68,086	22,790	273,614	115,336
12 to 15 - dose 2	990,889	19,561	307,781	9,645	191,519	64,304	21,681	261,726	106,726
12 to 15 - population	1,243,990	19,693	390,330	13,060	270,146	82,747	26,308	308,611	132,869
12 to 15 % with dose 1	84.17%	>99%	82.53%	82.02%	75.94%	82.28%	86.63%	88.66%	86.80%
12 to 15 % with dose 2	79.65%	>99%	78.85%	73.85%	70.89%	77.71%	82.41%	84.81%	80.32%

*National population will not equal sum of listed jurisdictions due to a small number of people counted in national population residing in some 'other' territories. Sum of state doses will not add to national total as some records are unable to be geocoded to a State or Territory.
Doses sourced from Australian Immunisation Register, population from ABS ERP June 2020

Vaccinations by location

Cumulative total doses administered vs eligible state populations*

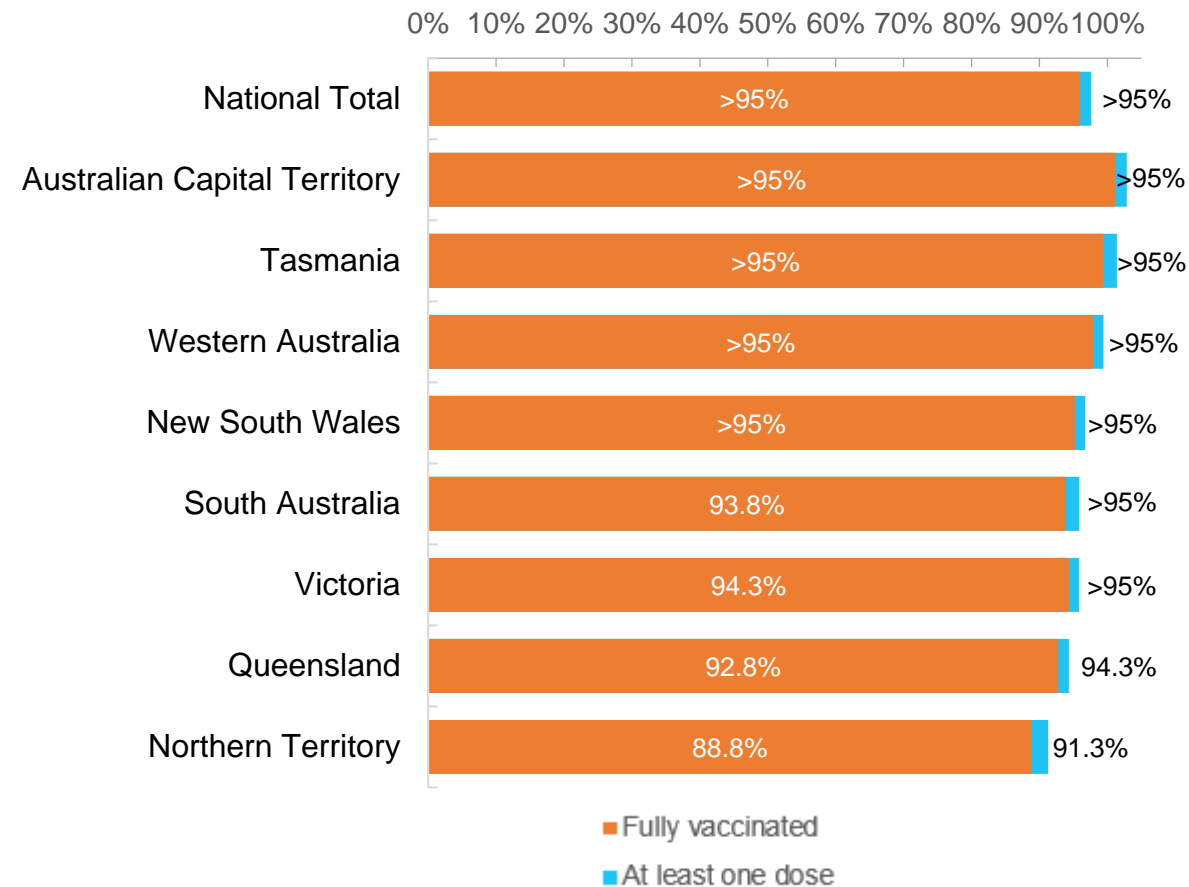


*Not an indication of percentage vaccinated, numbers will exceed 100 due to multiple doses required per person of the population. All doses are included for those aged 12 and above, and are based on vaccination provider location.

Data as at:
12 Jul 2022

Australia's COVID-19
Vaccine Roadmap

First and Second Doses by residential location



Aboriginal and Torres Strait Islander peoples

Number of people vaccinated

Data as at:
12 Jul 2022
Updated weekly

Australia's COVID-19
Vaccine Roadmap



444,318

people over the age of 16
have had at least one dose

85.0%

of people over the age of 16
have had at least one dose



426,102

people over the age of 16
are fully vaccinated

81.5%

of people over the age of 16 are
fully vaccinated



People aged 12 – 15 years

47,760

41,838

67.6%

At least one dose

59.3%

Fully vaccinated

178 Aboriginal community controlled health services (ACCHS)

0#

50

27

44

12

3

21

21

ACT

NSW

NT

QLD

SA

TAS

VIC

WA

Medicare Address State ^{##}	Individuals Dose 1	Individuals Dose 1 %	Individuals Dose 2	Individuals Dose 2 %
Australian Capital Territory	4,800	91.8%	4,681	89.6%
New South Wales	136,312	87.3%	133,265	85.4%
Northern Territory	41,316	89.8%	39,372	85.5%
Queensland	116,837	81.9%	111,512	78.1%
South Australia	20,128	80.7%	18,761	75.2%
Tasmania	13,904	88.9%	13,505	86.3%
Victoria	35,751	90.5%	34,958	88.5%
Western Australia	53,748	86.8%	50,161	81.0%
Unknown/Other Territories	21,522	70.5%	19,887	65.2%
Totals	444,318	85.0%	426,102	81.5%

Source: Australian Immunisation Register

*Identifying as Aboriginal and Torres Strait Islander is optional and the estimated population may be under reported.

**Includes all Aboriginal and Torres Strait Islander peoples who have received a vaccination, not limited to those administered in an ACCHS setting

#ACCHS in the ACT are currently operating as a Commonwealth Vaccine Clinics so not included to avoid double counting

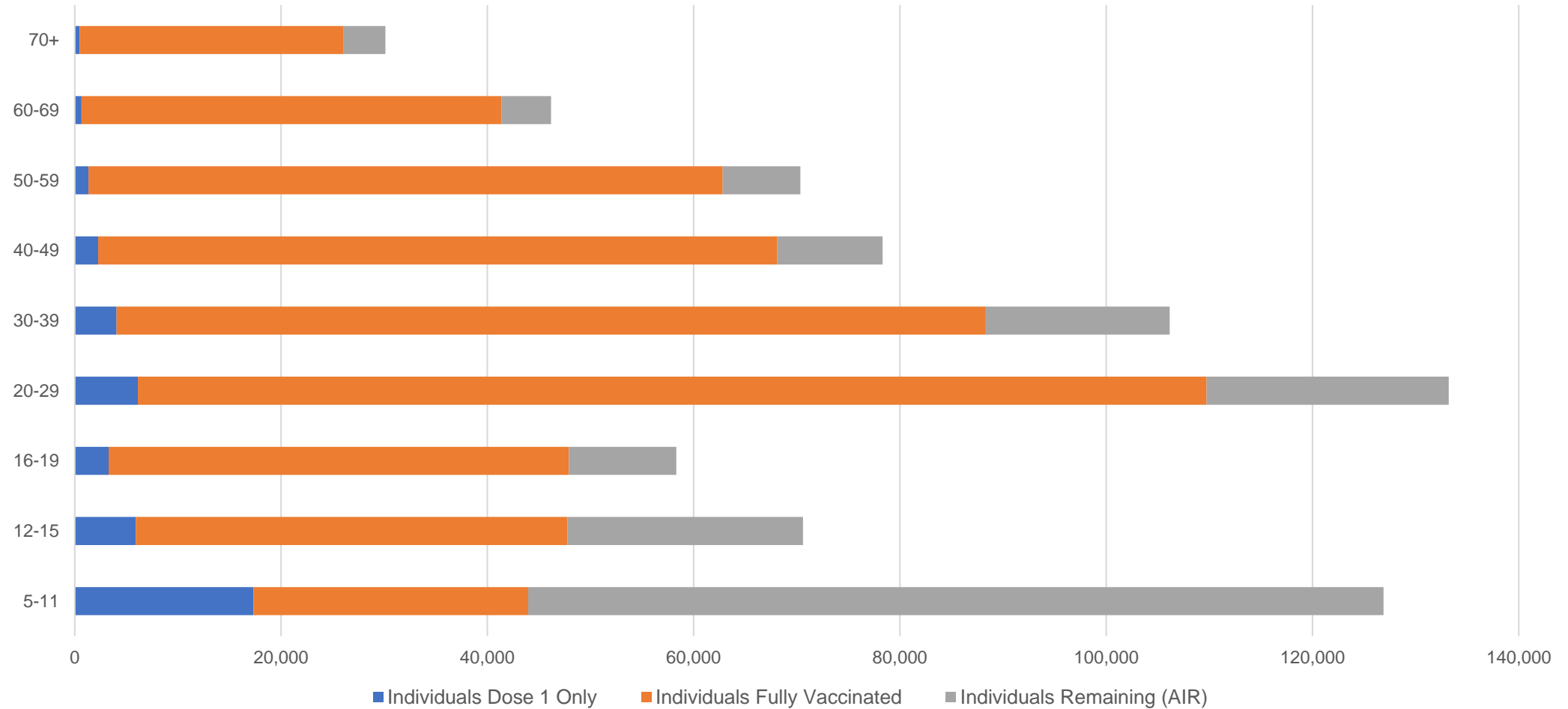
##The above table includes all identified Aboriginal and Torres Strait Islander people who are aged 16 and above by their state of residence.

Aboriginal and Torres Strait Islander peoples

Number of people vaccinated by age

Data as at:
12 Jul 2022
Updated weekly

Australia's COVID-19
Vaccine Roadmap



Source: Australian Immunisation Register

Commonwealth primary care

Data as at:
12 Jul 2022

Australia's COVID-19
Vaccine Roadmap



Primary care vaccine administration sites

5,699	121	178	3,614
GPs	CVCs	ACCHS	Pharmacies



38,156,308 total vaccine doses administered
primary care settings as at 12 July
+ 107,247 recorded in the last 24 hours

Primary care vaccinations by provider type

	Doses administered	Daily increase	7 day increase
General Practice* includes other Commonwealth	30,369,230	54,586	188,422
Pharmacy	7,787,078	52,661	171,400

NSW
13,154,649
(+36,250 daily increase)

VIC
9,456,817
(+24,537 daily increase)

QLD
7,366,015
(+24,643 daily increase)

WA
3,996,970
(+9,217 daily increase)

TAS
729,800
(+2,151 daily increase)

SA
2,304,254
(+7,226 daily increase)

ACT
605,250
(+2,246 daily increase)

NT
224,539
(+559 daily increase)

318,014

doses administered to persons
residing in other territories or with
missing residential information

*General practice includes Commonwealth Vaccination Clinics, Aboriginal Community Health Centres, Royal Flying Doctor Service and other Commonwealth vaccination facilities

Source: Australian Immunisation Register

Data as at:
12 Jul 2022

Commonwealth aged care and disability doses administered



1,320,689 (+ 332 last 24 hours)

Total vaccine doses administered in aged care and disability facilities as at 12 July

Number of doses administered as part of the Commonwealth aged and disability care rollout

NSW
572,959
(+79 daily increase)

VIC
248,065
(+48 daily increase)

QLD
210,508
(<10 daily increase)

WA
112,796
(+44 daily increase)

TAS
23,745
(<10 daily increase)

SA
86,502
(+23 daily increase)

ACT
17,946
(<10 daily increase)

NT
7,712
(<10 daily increase)

40,456

doses administered to persons
residing in other territories or with
missing residential information

*Sourced from the Australian Immunisation Register. Includes all persons vaccinated at participating residential aged care, disability and related industry settings.

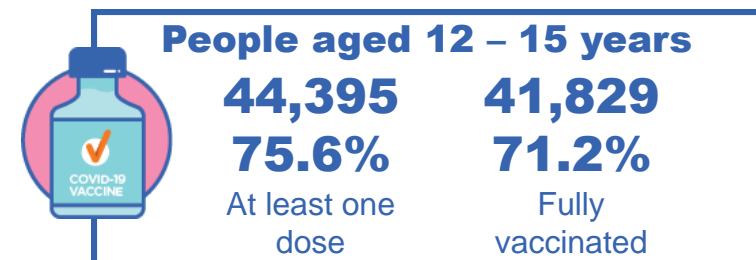
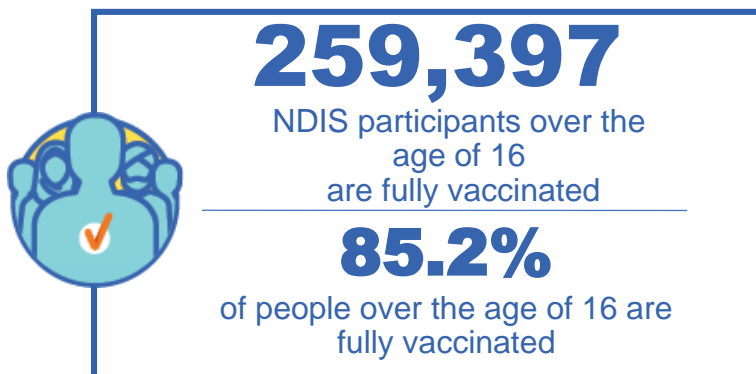
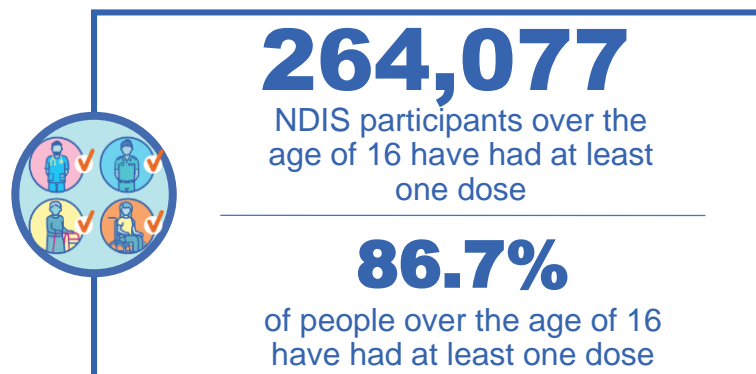
**State level breakdown indicates the residential location and may not align to the state in which the vaccination occurred.

Source: Australian Immunisation Register

National Disability Insurance Scheme (NDIS) reported vaccinations

Data as at:
07 July 2022
Updated weekly

Australia's COVID-19
Vaccine Roadmap



NDIS participant vaccinations

	People aged 16+ with at least one dose	People aged 16+ fully vaccinated	% People aged 16+ with at least one dose	% People aged 16+ fully vaccinated
ACT	4,967	4,905	88.9%	87.8%
NSW	80,766	79,502	87.3%	85.9%
NT	2,295	2,225	77.6%	75.2%
QLD	52,453	51,465	84.9%	83.3%
SA	21,630	21,133	84.4%	82.4%
TAS	6,600	6,449	87.0%	85.0%
VIC	70,118	68,967	87.9%	86.4%
WA	25,248	24,751	88.0%	86.3%
National	264,077	259,397	86.7%	85.2%

Source: Linkage between National Disability Insurance Agency data and the Australian Immunisation Register. Total NDIS participant numbers as at 30 June. Australian Immunisation Register data as at 06 July. Includes all participants regardless of residence type.

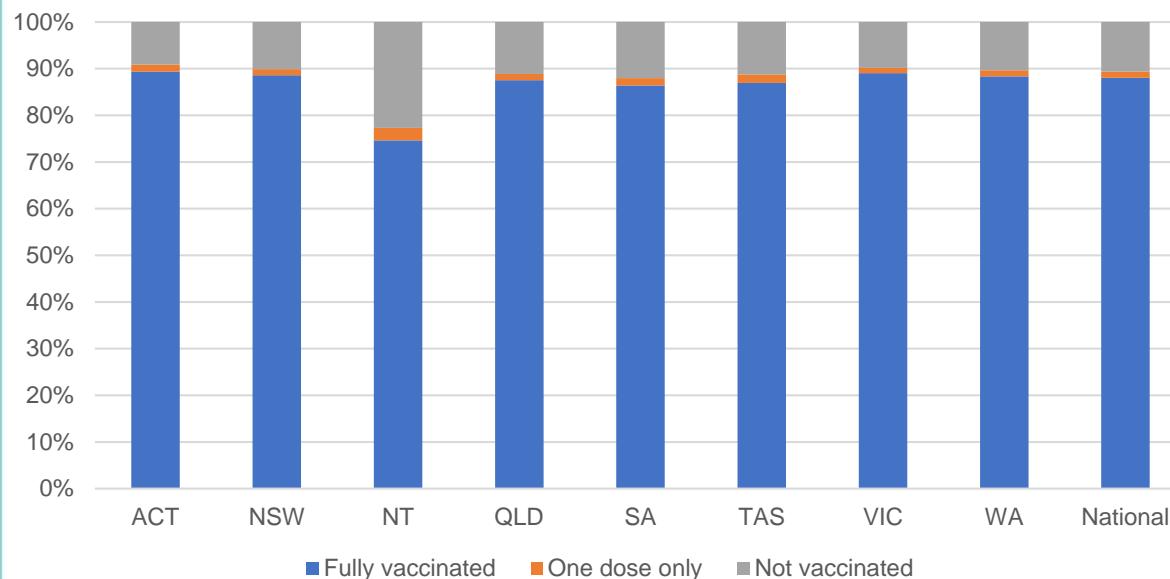
National Disability Insurance Scheme (NDIS) reported vaccinations

Data as at:
07 July 2022
Updated weekly

Australia's COVID-19
Vaccine Roadmap

NATIONAL	Total people with at least one dose	People fully vaccinated	Total number of individuals in cohort	% People with at least one dose	% People fully vaccinated
NDIS participants living in disability accommodation	21,321	21,001	23,858	89.4%	88.0%

NDIS participants in disability and aged care accommodation



Source: Linkage between National Disability Insurance Agency data and the Australian Immunisation Register. Includes participants residing in disability accommodation only.

Source: Total NDIS participant numbers as at 30 June. Participant data as at 06 July. Australian Immunisation Register data as at 06 July. Worker data as at 06 July.

NDIS workforce vaccinations

	NDIS workers with at least one dose	NDIS workers fully vaccinated	% NDIS workers with at least one dose	% NDIS workers fully vaccinated
NSW	128,323	123,394	98.3%	94.5%
VIC	117,599	114,365	98.4%	95.7%
QLD	71,472	70,626	97.9%	96.7%
WA	34,485	33,092	99.0%	95.0%
SA	35,267	33,506	98.6%	93.6%
TAS	12,424	12,017	98.8%	95.6%
ACT	12,340	12,313	99.8%	99.6%
NT	3,966	3,818	99.6%	95.9%
TOTAL	415,876	403,131	98.4%	95.4%

Source: the NDIS Commission has established a requirement for registered NDIS providers who provide intensive disability support services to report on the vaccination status of workers they employ, or otherwise engage, to deliver NDIS-funded supports and services, and who are required to be vaccinated in accordance with in-force state and territory public health orders. The statistics reflect data reported to the NDIS Commission by registered NDIS providers and should be considered indicative and subject to change.

Note: Some registered NDIS providers are yet to report on the vaccination status of their workforce. The NDIS Commission is working with those providers around reporting requirements.

Remaining workers not included include those exempt from vaccination requirements, workers whose vaccination status is not yet verified by the provider (such as workers on leave) and provider reporting anomalies.

Residential aged care vaccination rollout

Residential aged care facilities status

175,438

People fully vaccinated

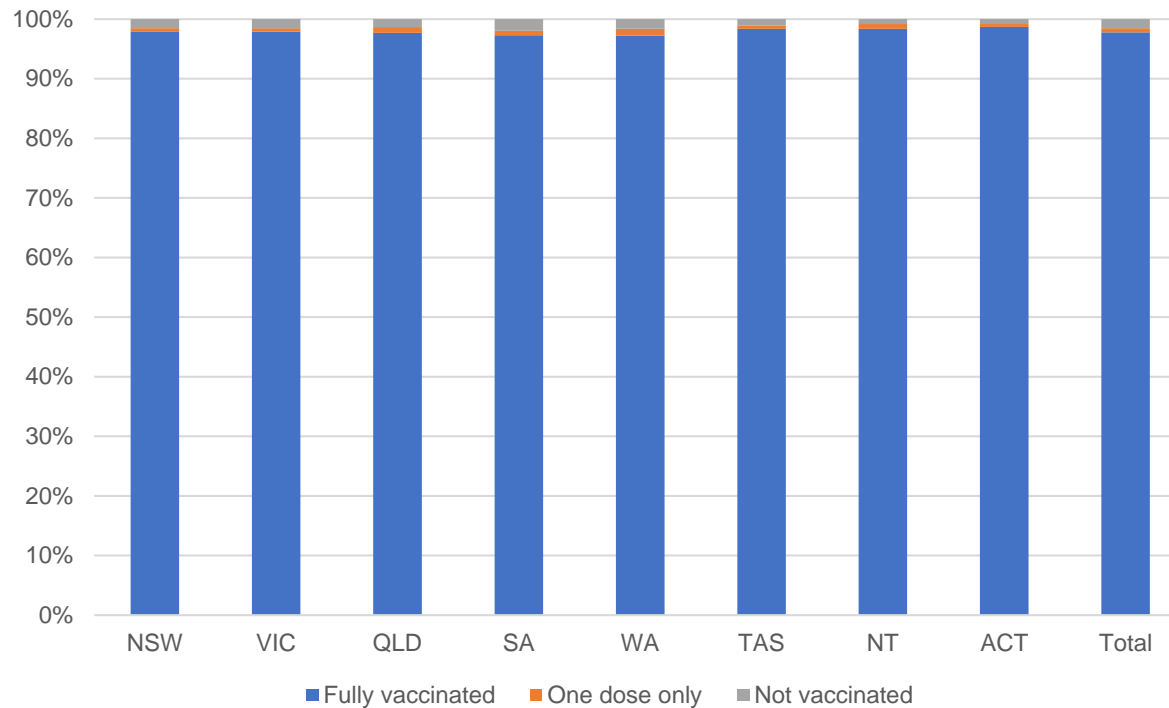
176,706

People with at least one dose

Australia's COVID-19 Vaccine Roadmap

Data as at:
07 July 2022
Updated weekly

Aged care resident vaccinations



Aged care worker vaccinations

Jurisdictions	Total workers with at least one dose	Workers fully vaccinated	% Workers with at least one dose	% Workers fully vaccinated
NSW	77,266	77,142	99.9%	99.7%
VIC	70,674	70,673	100.0%	100.0%
QLD	48,579	48,565	100.0%	100.0%
SA	26,594	26,585	100.0%	100.0%
WA	24,718	24,716	100.0%	100.0%
TAS	7,536	7,536	100.0%	100.0%
NT	904	904	100.0%	100.0%
ACT	2,954	2,954	100.0%	100.0%
Total	259,225	259,075	100.0%	99.9%

Source: Residential aged care provider self-reported COVID-19 vaccination information

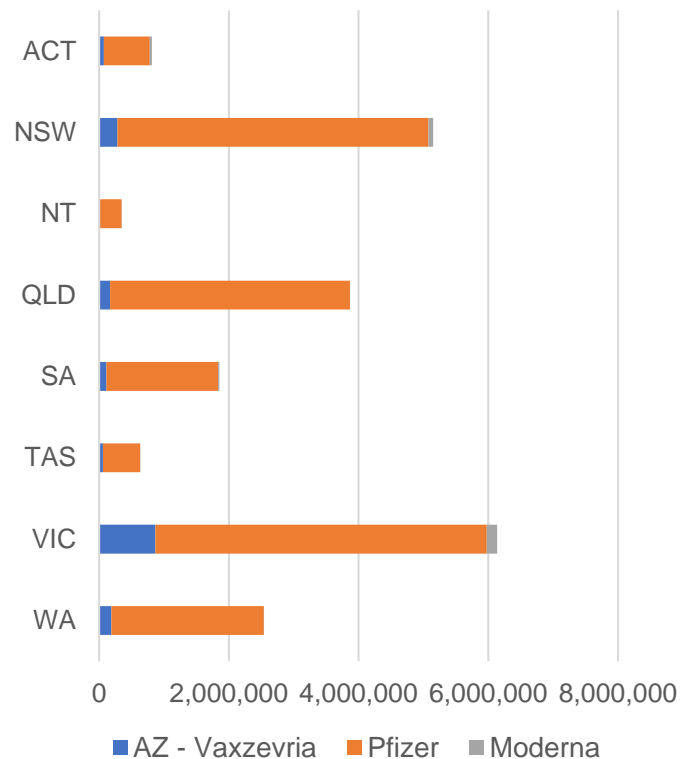
*Status updates are provided by facilities at least once per week. Reporting is updated Monday to Friday to encompass different facility updates being made on different days.

Data is sourced directly from Aged Care Service Providers and is not drawn or closely aligned with data from AIR due to inconsistencies and potential lags in uploading of records.

Data as at:
12 Jul 2022

Jurisdiction administered

Total vaccine doses administered in State and Territory clinics as at 12 July



21,354,083 total vaccine doses administered
in State and Territory clinics as at 12 July
+ **12,406** recorded in the last 24 hours
+ **38,036** recorded in the last 7 days

NSW
5,152,219
(+2,494 daily
increase)

VIC
6,142,284
(+2,384 daily
increase)

QLD
3,866,748
(+1,056 daily
increase)

WA
2,543,624
(+2,927 daily
increase)

TAS
632,242
(+716 daily
increase)

SA
1,855,533
(+2,134 daily
increase)

ACT
813,845
(+647 daily
increase)

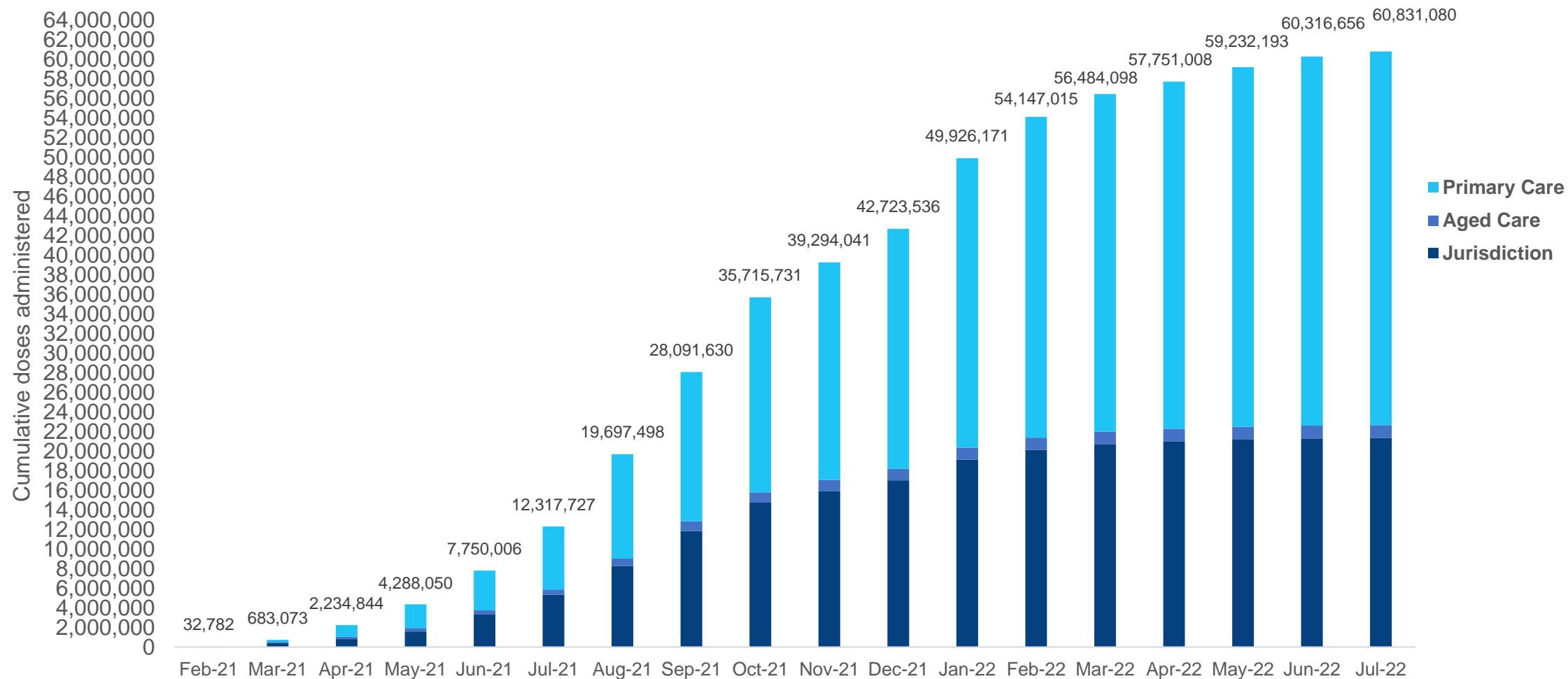
NT
347,588
(+48 daily
increase)

*Sourced from the Australian Immunisation Register. Numbers are calculated as difference in daily cumulative reported numbers to allow for historical corrections.

Source: Australian Immunisation Register

Cumulative doses administered by channel

Data as at:
12 Jul 2022

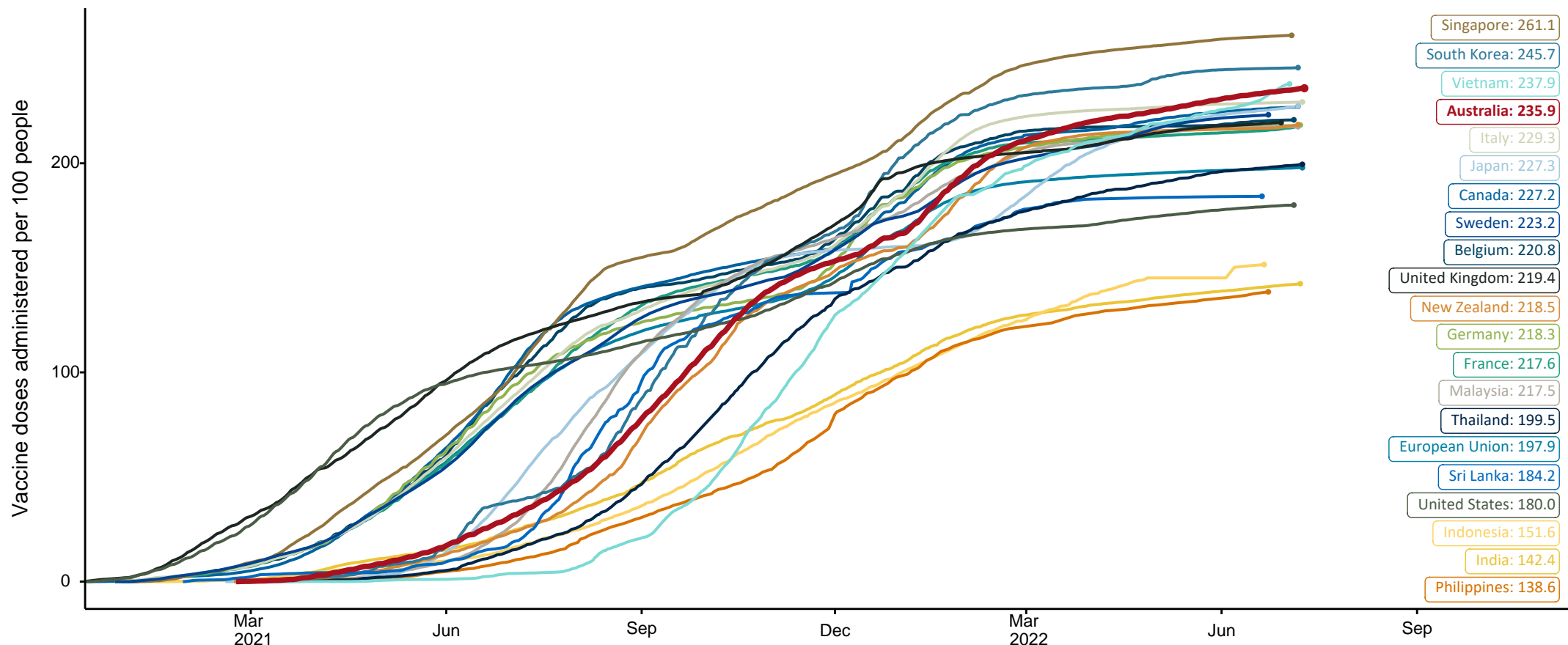


Source: Australian Immunisation Register

COVID-19 vaccine doses per 100, Australia and select countries

Data as at:
10 July 2022
Updated weekly

Australia's COVID-19
Vaccine Roadmap



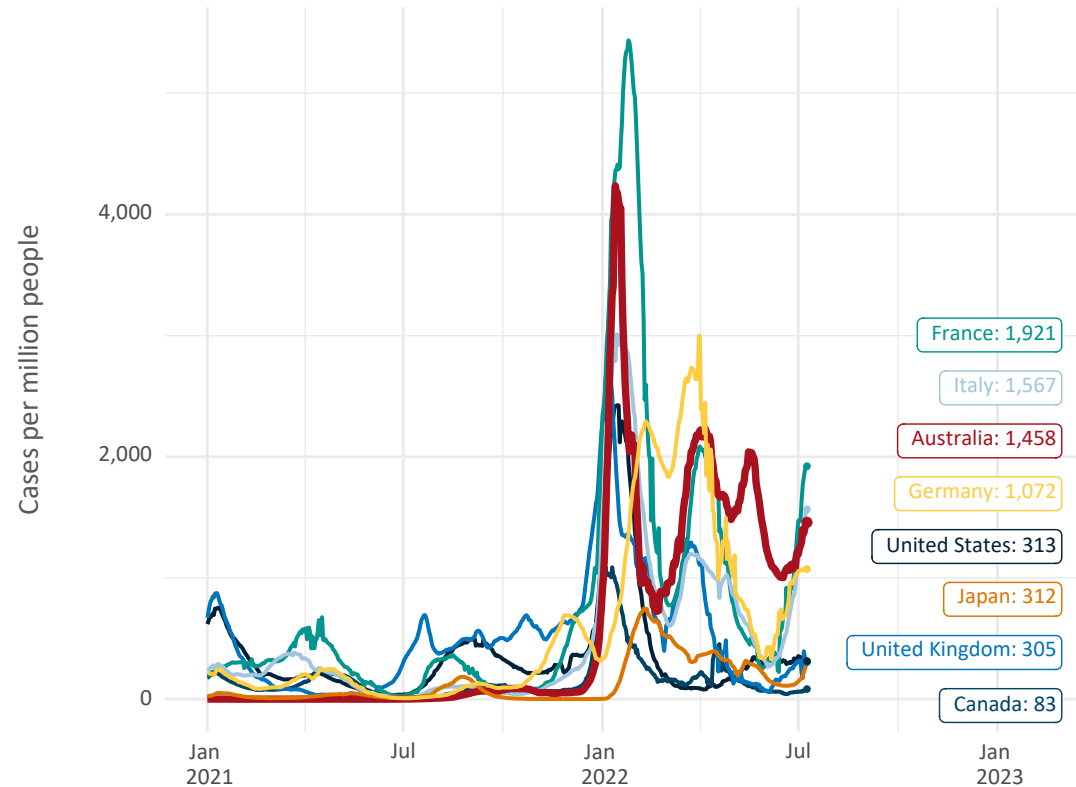
Note: From 11 January 2022, data for Australia includes all doses administered to people 5 and over. Prior to 11 January, data was for 12 and over.
Source: Department of Health (Australia), Our World in Data (international)
Latest data: 10 July

International data – COVID-19

Data as at:
10 July 2022
Updated weekly

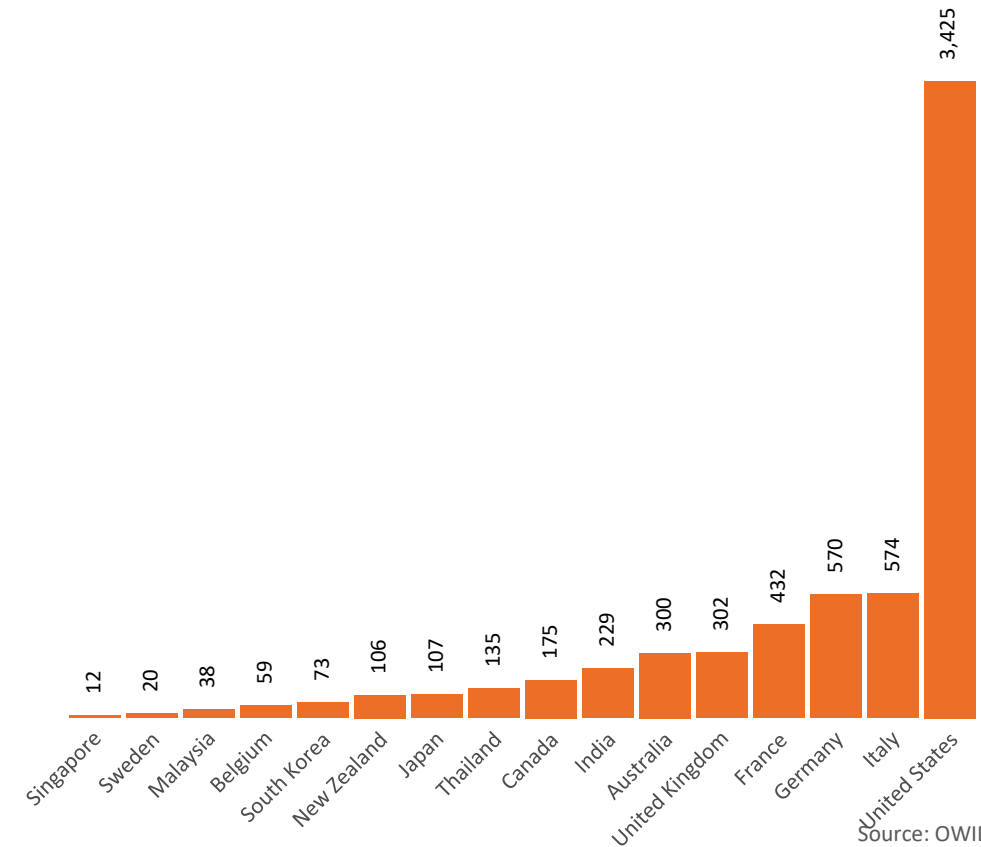
Australia's COVID-19
Vaccine Roadmap

New daily cases per million since 2021, Australia and G7 countries
Smoothed - 7 day average



Source: OWID
Data downloaded: 11 Jul 2022 09:21
Latest data: 09 Jul 2022

COVID-19 deaths in past 7 days - Australia and select countries



Source: OWID
Data downloaded: 11 Jul 2022 09:21
Latest data: 09 Jul 2022