



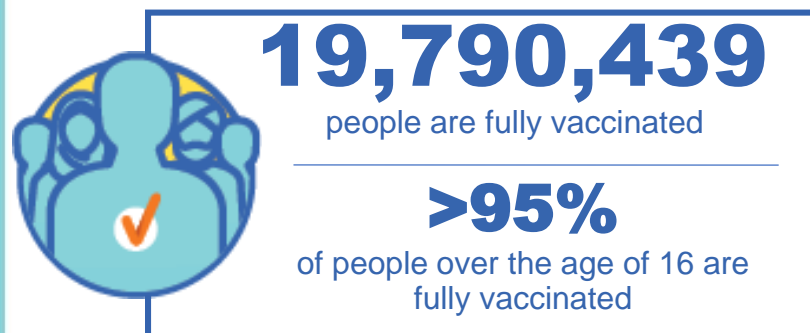
**Australian Government**  
**Operation COVID Shield**

# COVID-19 Vaccine Roll-out

12 July 2022

Data as at:  
11 Jul 2022

## Total vaccine doses



**60,711,095** total vaccine  
doses administered nationally as at 11 July

**+101,080** recorded in the last 24 hours



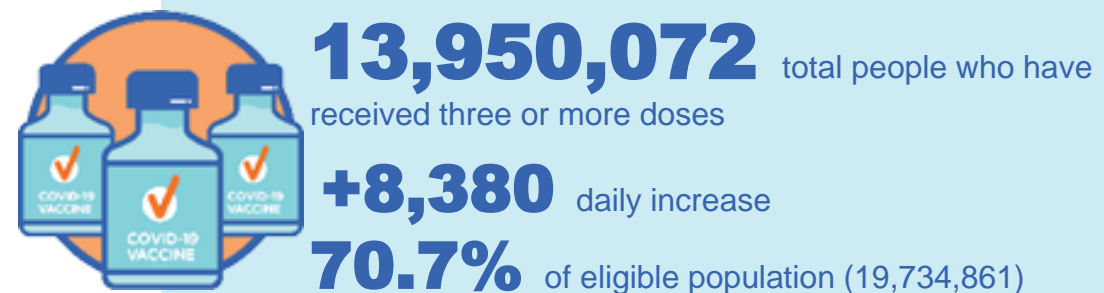
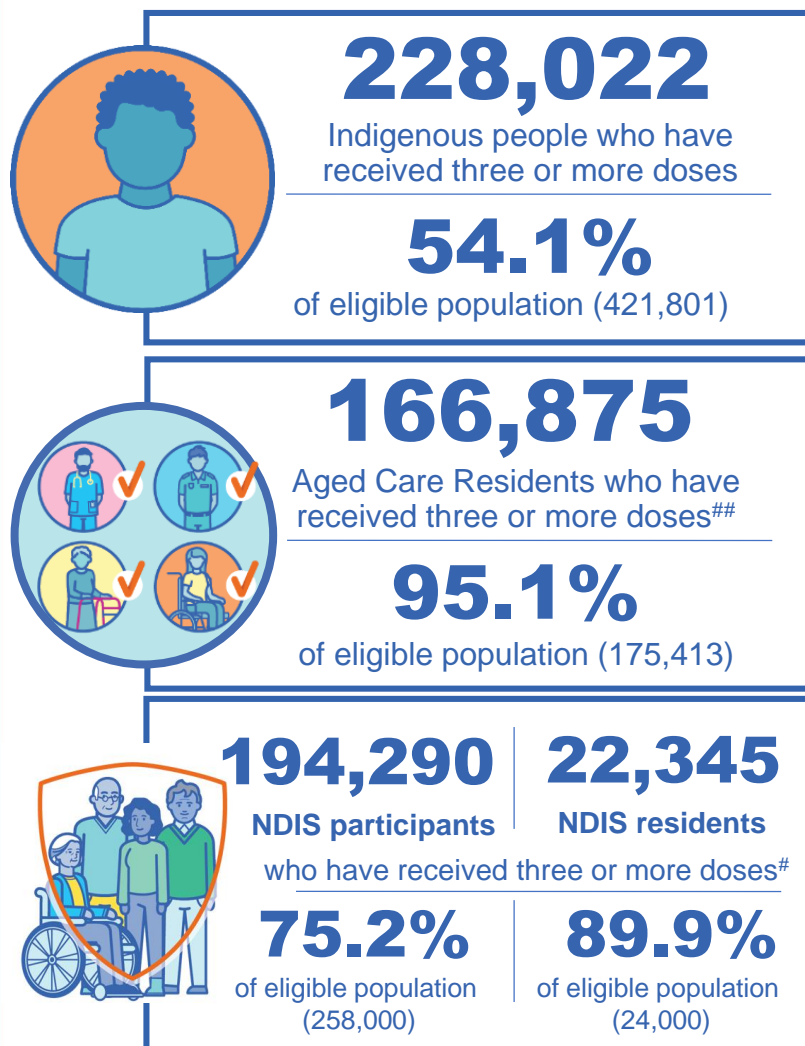
\*Administration state breakdown indicates state in which a vaccine was administered

\*\*Overall dose count includes instances of more than three doses per person in a small number of cases.

Source: Australian Immunisation Register

# Booster Vaccinations

Data as at:  
11 Jul 2022



	Number of People	Daily Increase	% of Eligible
NSW	4,260,494	3,199	68.3%
VIC	3,716,155	1,739	73.0%
QLD	2,419,840	1,711	63.7%
WA	1,707,501	435	82.8%
SA	1,000,364	626	74.3%
TAS	319,192	173	73.2%
ACT	275,183	141	79.2%
NT	131,750	23	78.2%

\*People may belong to multiple groups and could be represented in the above breakdowns multiple times.  
# NDIS participants data as at 06 July 2022. ## Aged Care Residents data as at 11 July 2022.

Source: Australian Immunisation Register

**119,593** doses administered to persons residing in other territories or with missing residential information

# Fourth Doses

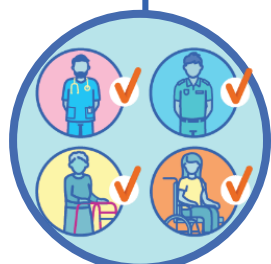
Data as at:  
11 Jul 2022

Australia's COVID-19  
Vaccine Roadmap



**2,658,732** total people (16+) who have received four or more doses

**+87,434** daily increase



**2,257,887**

People aged 65+ who have received  
four or more doses

**59.1%**

of eligible population (3,819,207)



**95,007**

Aged Care Residents who have  
received four or more doses<sup>#</sup>

**67.9%**

of eligible population (139,971)

	Number of People 16+	Daily Increase
ACT	50,744	1,706
NSW	858,263	27,318
NT	11,404	347
QLD	515,484	17,979
SA	216,207	6,879
TAS	74,995	2,262
VIC	653,038	20,322
WA	265,601	10,243

**12,996** doses administered to persons  
residing in other territories or with  
missing residential information

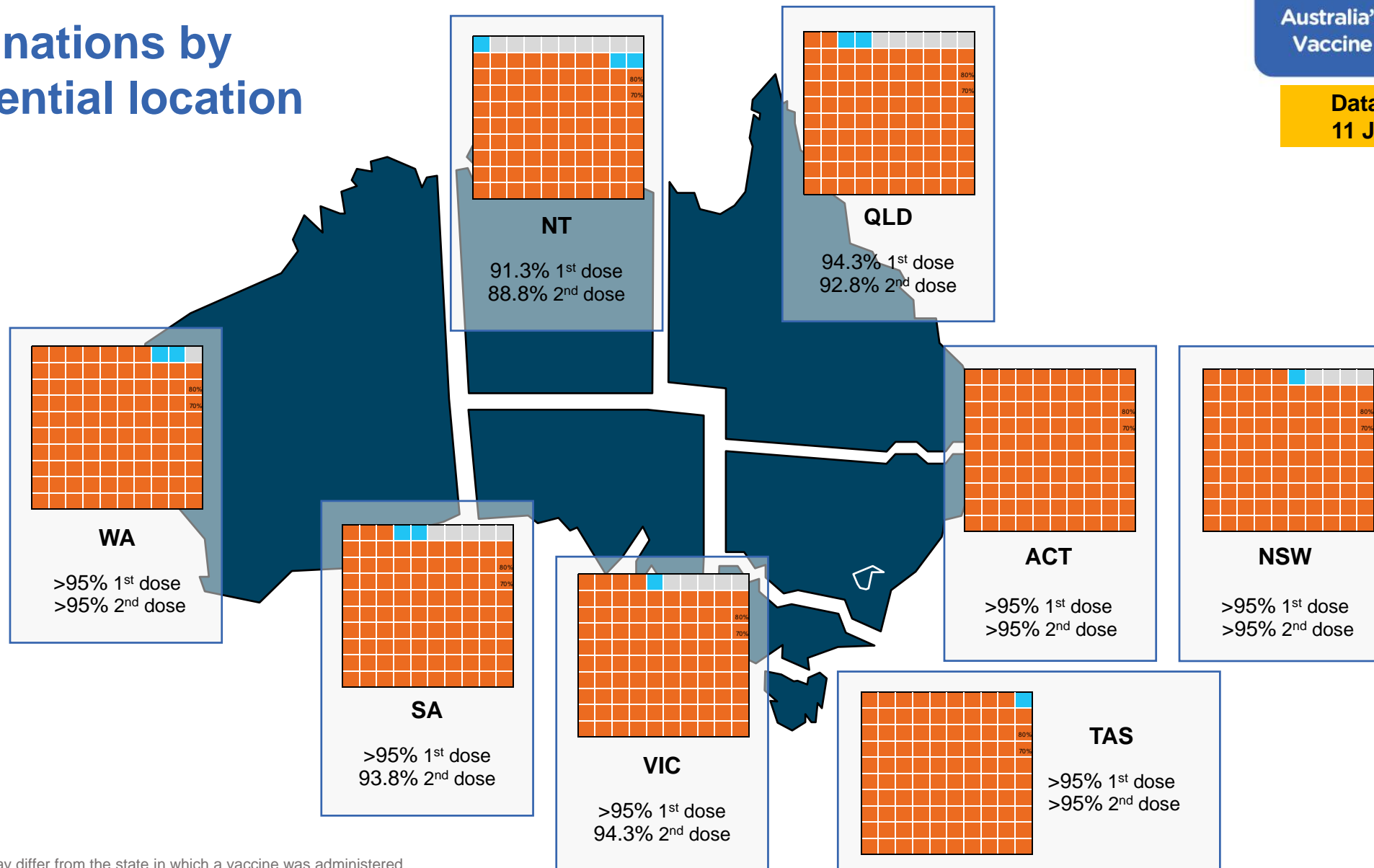
\*People become eligible for a fourth dose three months after their third dose. Individuals may belong to multiple groups and could be represented in the above multiple times.  
<sup>#</sup>Aged Care Residents data as at 10 July 2022.

Source: Australian Immunisation Register

# Vaccinations by residential location

Australia's COVID-19  
Vaccine Roadmap

Data as at:  
11 Jul 2022



\*Residential state may differ from the state in which a vaccine was administered

# Commonwealth and Jurisdiction vaccine doses administered

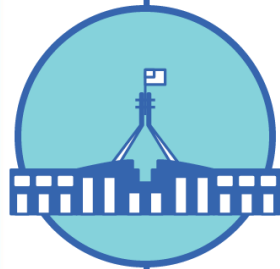
Data as at:  
11 Jul 2022



**60,711,095** total vaccine  
doses administered nationally as at 11 July  
**+ 101,080** recorded in the last 24 hours



**21,341,677**  
doses administered by state  
and territory facilities  
**+ 9,916**  
recorded in the last 24 hours



**39,369,418**  
doses administered by  
commonwealth facilities  
**+ 91,164**  
recorded in the last 24 hours

**38,049,061** total vaccine doses  
administered in primary care settings  
**1,320,357** total vaccine doses  
administered in aged care and disability  
settings

NSW	Jurisdictions	Commonwealth
Cumulative	5,149,725	13,691,672
Daily increase	1,876	30,487

VIC	Jurisdictions	Commonwealth
Cumulative	6,139,900	9,764,934
Daily increase	1,556	21,454

QLD	Jurisdictions	Commonwealth
Cumulative	3,865,692	7,626,294
Daily increase	976	19,891

WA	Jurisdictions	Commonwealth
Cumulative	2,540,697	4,128,736
Daily increase	2,435	8,916

TAS	Jurisdictions	Commonwealth
Cumulative	631,526	748,623
Daily increase	569	1,975

SA	Jurisdictions	Commonwealth
Cumulative	1,853,399	2,378,372
Daily increase	1,865	6,042

ACT	Jurisdictions	Commonwealth
Cumulative	813,198	780,587
Daily increase	631	1,937

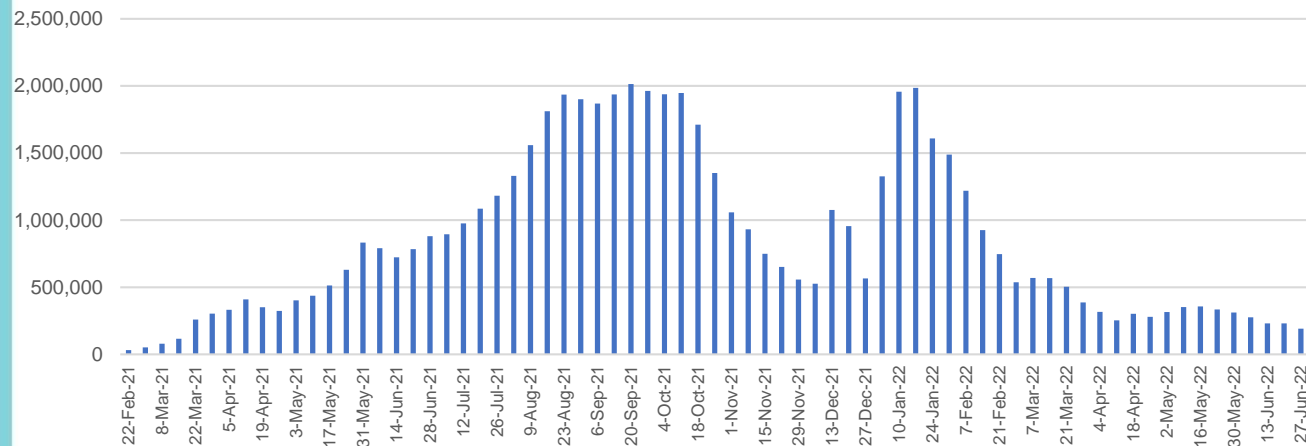
NT	Jurisdictions	Commonwealth
Cumulative	347,540	250,200
Daily increase	<10	462

# Vaccine milestone charts

Data as at:  
11 Jul 2022

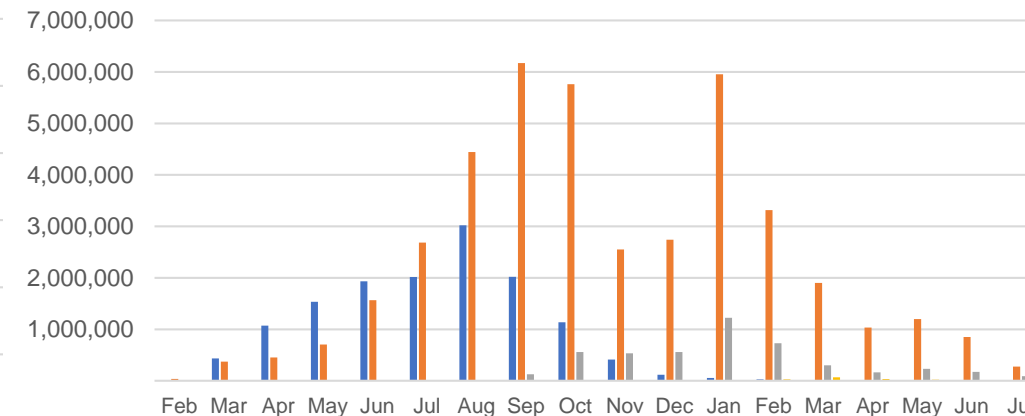
Australia's COVID-19  
Vaccine Roadmap

## Doses Administered by Week

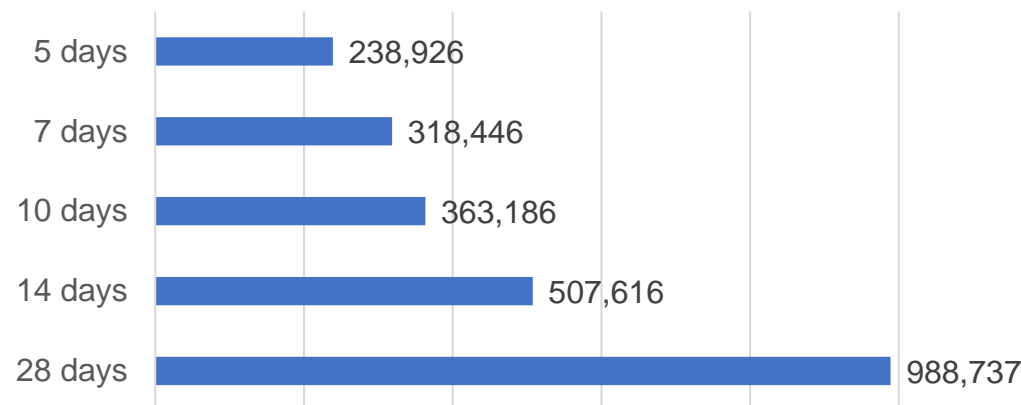


## Doses by administration month and vaccine type

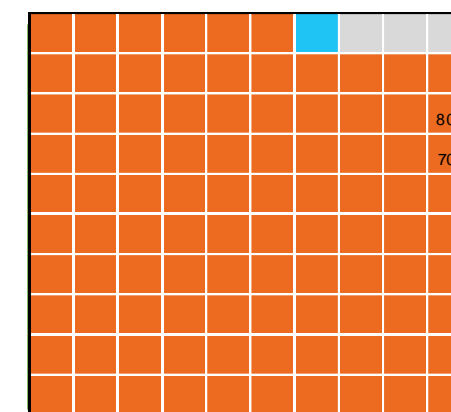
AZ - Vaxzevria Pfizer Moderna Novavax



## Doses Reported



## Eligible population percentage coverage



1st dose: > 95.0% 2nd dose: > 95.0%

\*Each square represents 1% of the national population. Squares are filled as milestones are achieved.

\*Sourced from the Australian Immunisation Register.

# Doses by age and sex

First and second doses by age and sex

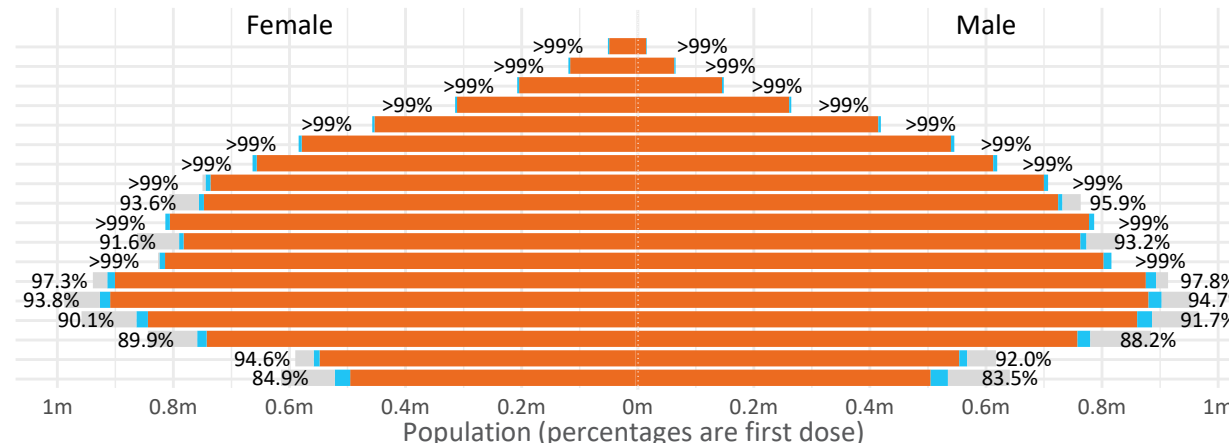
Australia's COVID-19  
Vaccine Roadmap

Data as at:  
11 Jul 2022

Age	Dose 1	Dose 2
95+	66,502 (>99%)	63,039 (>99%)
90-94	183,388 (>99%)	177,883 (>99%)
85-89	353,016 (>99%)	346,289 (>99%)
80-84	574,258 (>99%)	567,119 (>99%)
75-79	868,803 (>99%)	860,273 (>99%)
70-74	1,120,411 (>99%)	1,108,956 (>99%)
65-69	1,273,186 (>99%)	1,258,188 (>99%)
60-64	1,440,145 (>99%)	1,423,518 (>99%)
55-59	1,475,623 (94.9%)	1,458,860 (93.8%)
50-54	1,586,942 (>99%)	1,569,960 (>99%)
45-49	1,550,358 (92.5%)	1,531,964 (91.4%)
40-44	1,627,867 (>99%)	1,603,854 (99.0%)
35-39	1,795,170 (97.8%)	1,762,874 (96.1%)
30-34	1,820,781 (94.7%)	1,778,625 (92.5%)
25-29	1,744,131 (91.5%)	1,696,086 (89.0%)
20-24	1,531,081 (89.4%)	1,490,501 (87.0%)
16-19	1,116,548 (93.4%)	1,092,450 (91.4%)
12-15	1,047,244 (84.2%)	991,003 (79.7%)

	16+	50+	12-15	5-11
Dose 1	97.62% (20,128,210 doses / 20,619,959 people)	>99% (8,942,274 doses / 8,749,703 people)	84.18% (1,047,244 doses / 1,243,990 people)	52.28% (1,190,120 doses / 2,276,638 people)
Dose 2	95.98% (19,790,439 doses / 20,619,959 people)	>99% (8,834,085 doses / 8,749,703 people)	79.66% (991,003 doses / 1,243,990 people)	40.02% (911,065 doses / 2,276,638 people)

Dose 1 Dose 2 Population



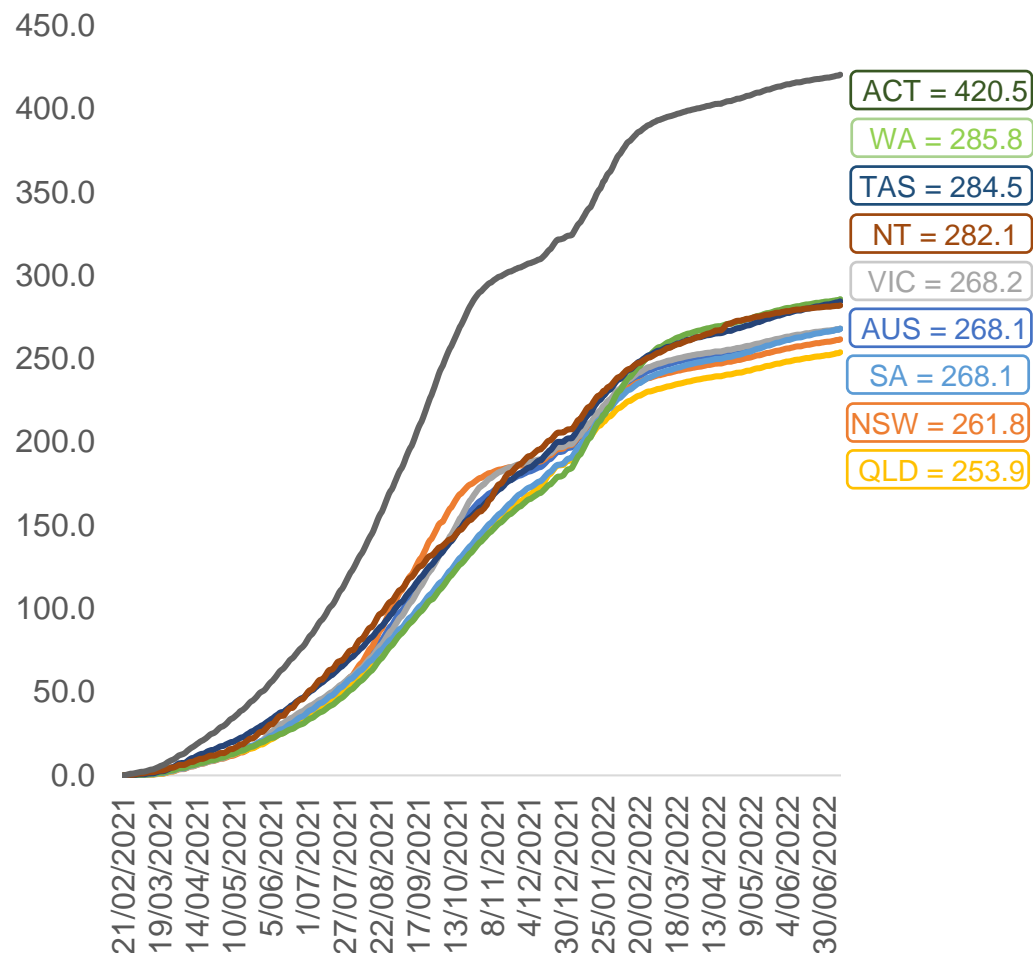
	AUS	ACT	NSW	NT	QLD	SA	TAS	VIC	WA
16 and over - dose 1	20,128,210	353,774	6,348,417	173,961	3,878,616	1,380,567	446,314	5,179,762	2,102,424
16 and over - dose 2	19,790,439	348,007	6,249,590	169,281	3,814,818	1,351,254	437,325	5,100,725	2,071,345
16 and over - population	20,619,959*	344,037	6,565,651	190,571	4,112,707	1,440,400	440,172	5,407,574	2,114,978
16 and over % with dose 1	97.62%	>99%	96.69%	91.28%	94.31%	95.85%	>99%	95.79%	>99%
16 and over % with dose 2	95.98%	>99%	95.19%	88.83%	92.76%	93.81%	>99%	94.33%	97.94%
5 to 11 - dose 1	1,190,120	31,716	355,760	13,105	206,133	83,490	28,396	324,171	139,881
5 to 11 - dose 2	911,065	27,536	279,038	8,817	151,653	64,233	23,267	248,723	103,200
5 to 11 - population	2,276,638	39,789	716,460	24,750	478,731	148,816	45,033	578,499	244,154
5 to 11 % with dose 1	52.28%	79.71%	49.66%	52.95%	43.06%	56.10%	63.06%	56.04%	57.29%
5 to 11 % with dose 2	40.02%	69.21%	38.95%	35.62%	31.68%	43.16%	51.67%	42.99%	42.27%
12 to 15 - dose 1	1,047,244	20,119	322,167	10,726	205,200	68,090	22,780	273,636	115,341
12 to 15 - dose 2	991,003	19,558	307,773	9,657	191,598	64,310	21,671	261,748	106,726
12 to 15 - population	1,243,990	19,693	390,330	13,060	270,146	82,747	26,308	308,611	132,869
12 to 15 % with dose 1	84.18%	>99%	82.54%	82.13%	75.96%	82.29%	86.59%	88.67%	86.81%
12 to 15 % with dose 2	79.66%	>99%	78.85%	73.94%	70.92%	77.72%	82.37%	84.81%	80.32%

\*National population will not equal sum of listed jurisdictions due to a small number of people counted in national population residing in some 'other' territories. Sum of state doses will not add to national total as some records are unable to be geocoded to a State or Territory.  
Doses sourced from Australian Immunisation Register, population from ABS ERP June 2020



# Vaccinations by location

Cumulative total doses administered vs eligible state populations\*

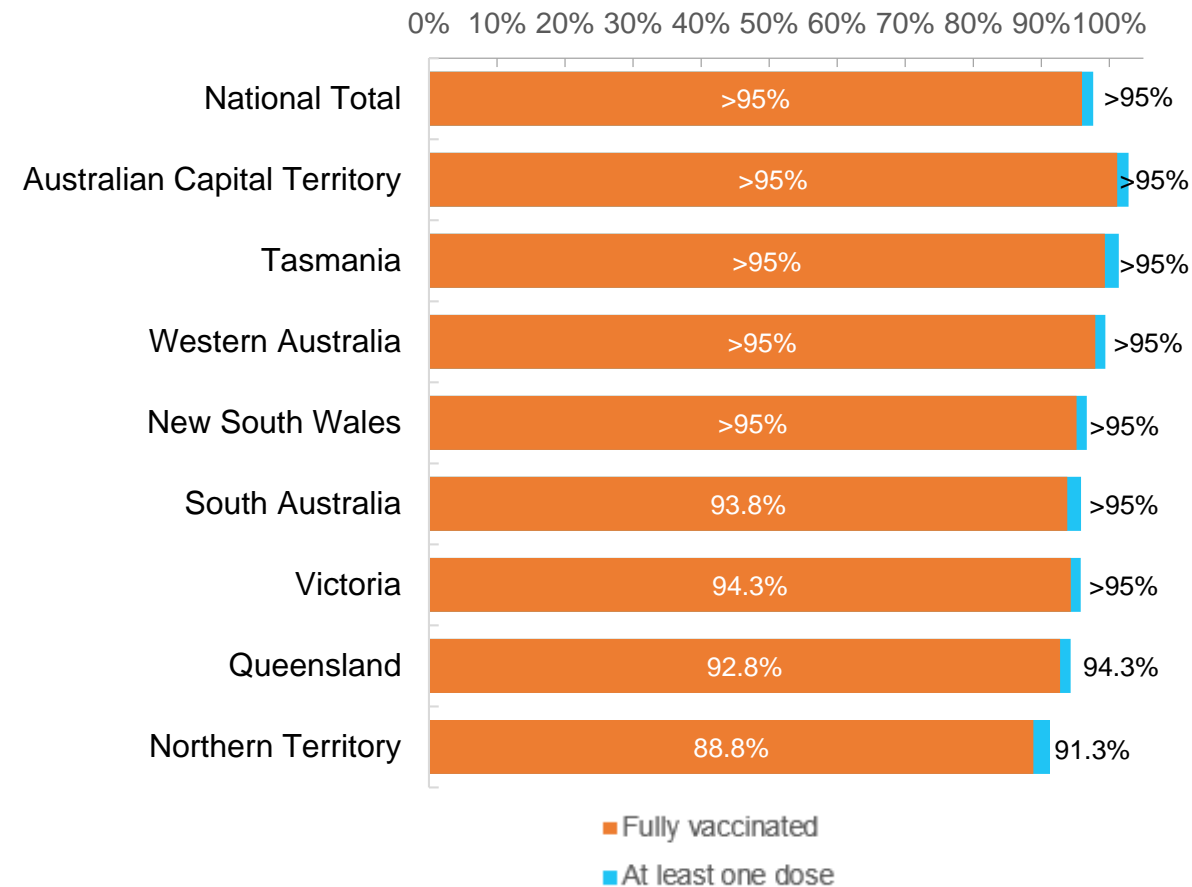


\*Not an indication of percentage vaccinated, numbers will exceed 100 due to multiple doses required per person of the population. All doses are included for those aged 12 and above, and are based on vaccination provider location.

Data as at:  
11 Jul 2022

Australia's COVID-19  
Vaccine Roadmap

First and Second Doses by residential location



# Aboriginal and Torres Strait Islander peoples

## Number of people vaccinated

Data as at:  
05 Jul 2022  
Updated weekly

Australia's COVID-19  
Vaccine Roadmap



**443,710**

people over the age of 16  
have had at least one dose

**85.0%**

of people over the age of 16  
have had at least one dose



**425,479**

people over the age of 16  
are fully vaccinated

**81.5%**

of people over the age of 16 are  
fully vaccinated



People aged 12 – 15 years

**47,820**

**41,926**

**67.7%**

**59.4%**

At least one dose

Fully vaccinated

### 178 Aboriginal community controlled health services (ACCHS)

0#

50

27

44

12

3

21

21

**ACT**

**NSW**

**NT**

**QLD**

**SA**

**TAS**

**VIC**

**WA**

Medicare Address State <sup>##</sup>	Individuals Dose 1	Individuals Dose 1 %	Individuals Dose 2	Individuals Dose 2 %
Australian Capital Territory	4,800	91.8%	4,680	89.5%
New South Wales	136,008	87.3%	132,965	85.4%
Northern Territory	41,498	89.7%	39,543	85.5%
Queensland	116,679	81.8%	111,358	78.1%
South Australia	20,088	80.6%	18,726	75.1%
Tasmania	13,900	88.9%	13,499	86.3%
Victoria	35,711	90.4%	34,923	88.4%
Western Australia	53,593	86.8%	49,992	81.0%
Unknown/Other Territories	21,433	70.4%	19,793	65.1%
<b>Totals</b>	<b>443,710</b>	<b>85.0%</b>	<b>425,479</b>	<b>81.5%</b>

Source: Australian Immunisation Register

\*Identifying as Aboriginal and Torres Strait Islander is optional and the estimated population may be under reported.

\*\*Includes all Aboriginal and Torres Strait Islander peoples who have received a vaccination, not limited to those administered in an ACCHS setting

##ACCHS in the ACT are currently operating as a Commonwealth Vaccine Clinics so not included to avoid double counting

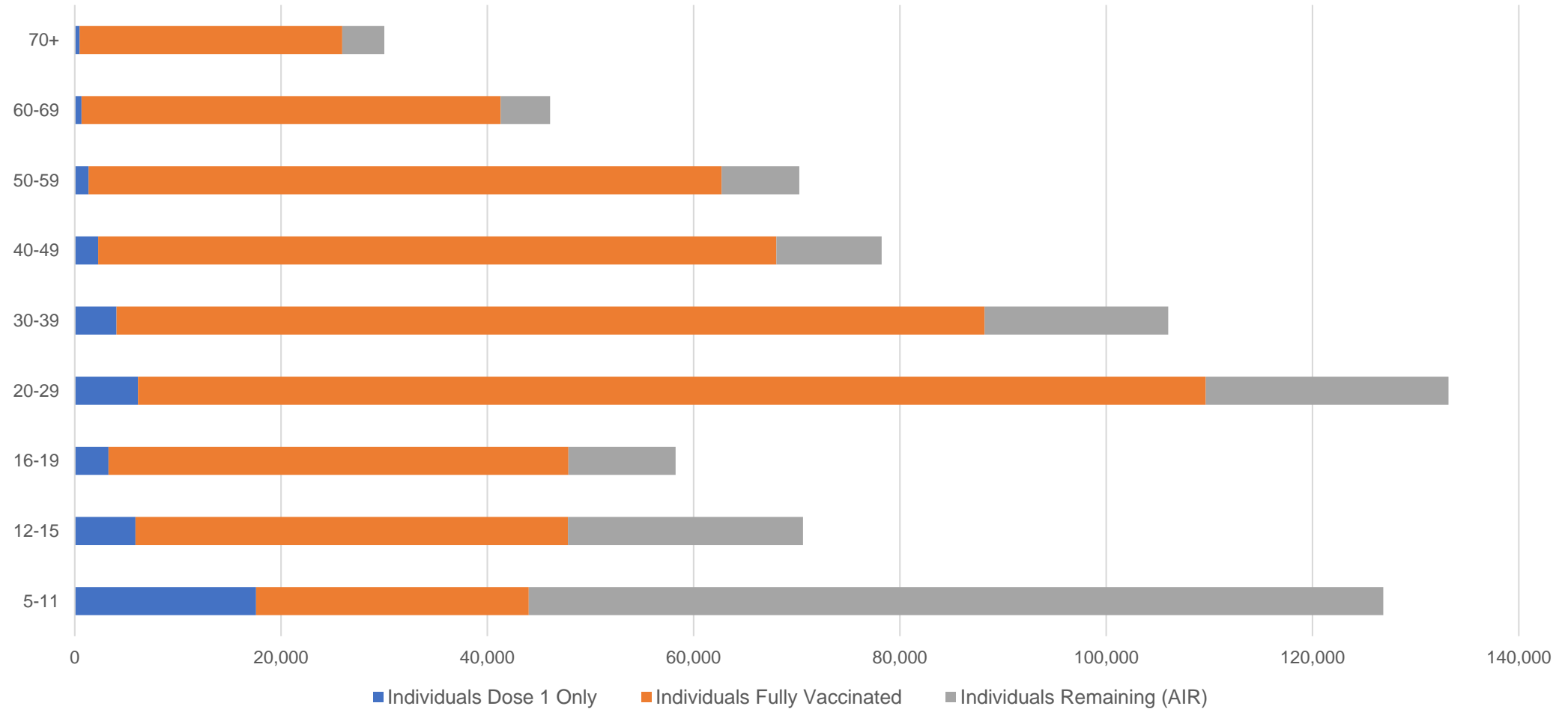
##The above table includes all identified Aboriginal and Torres Strait Islander people who are aged 16 and above by their state of residence.

# Aboriginal and Torres Strait Islander peoples

## Number of people vaccinated by age

Data as at:  
05 Jul 2022  
Updated weekly

Australia's COVID-19  
Vaccine Roadmap



Source: Australian Immunisation Register

# Commonwealth primary care

Data as at:  
11 Jul 2022

Australia's COVID-19  
Vaccine Roadmap



## Primary care vaccine administration sites

<b>5,699</b>	<b>121</b>	<b>178</b>	<b>3,614</b>
GPs	CVCs	ACCHS	Pharmacies



**38,049,061** total vaccine doses administered  
primary care settings as at 11 July  
**+ 90,997** recorded in the last 24 hours

## Primary care vaccinations by provider type

	Doses administered	Daily increase	7 day increase
General Practice* includes other Commonwealth	30,314,644	42,713	156,332
Pharmacy	7,734,417	48,284	130,901

**NSW**  
**13,118,399**  
(+30,604 daily increase)

**VIC**  
**9,432,280**  
(+21,451 daily increase)

**QLD**  
**7,341,372**  
(+19,372 daily increase)

**WA**  
**3,987,753**  
(+8,522 daily increase)

**TAS**  
**727,649**  
(+1,928 daily increase)

**SA**  
**2,297,028**  
(+5,969 daily increase)

**ACT**  
**603,004**  
(+1,917 daily increase)

**NT**  
**223,980**  
(+368 daily increase)

**317,596**

doses administered to persons  
residing in other territories or with  
missing residential information

\*General practice includes Commonwealth Vaccination Clinics, Aboriginal Community Health Centres, Royal Flying Doctor Service and other Commonwealth vaccination facilities

Source: Australian Immunisation Register

Data as at:  
11 Jul 2022

# Commonwealth aged care and disability doses administered



**1,320,357** (+ 167 last 24 hours)

Total vaccine doses administered in aged care and disability facilities as at 11 July

Number of doses administered as part of the Commonwealth aged and disability care rollout

**NSW**  
**572,880**  
( $<10$  daily increase)

**VIC**  
**248,017**  
( $<10$  daily increase)

**QLD**  
**210,507**  
(+41 daily increase)

**WA**  
**112,752**  
( $<10$  daily increase)

**TAS**  
**23,751**  
( $<10$  daily increase)

**SA**  
**86,479**  
(+10 daily increase)

**ACT**  
**17,948**  
( $<10$  daily increase)

**NT**  
**7,708**  
( $<10$  daily increase)

**40,315**

doses administered to persons  
residing in other territories or with  
missing residential information

\*Sourced from the Australian Immunisation Register. Includes all persons vaccinated at participating residential aged care, disability and related industry settings.

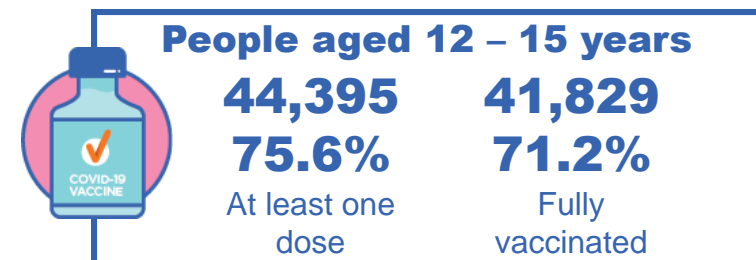
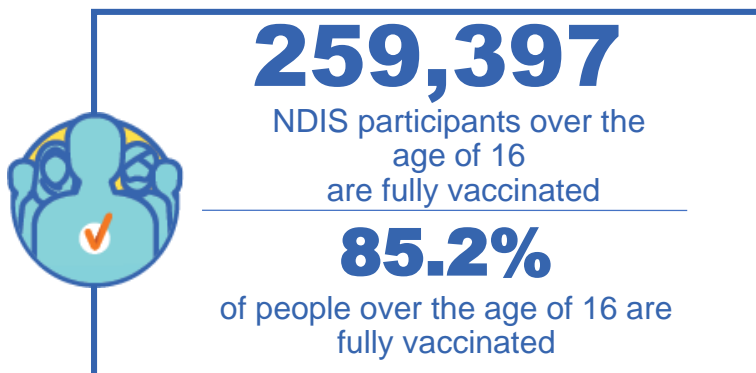
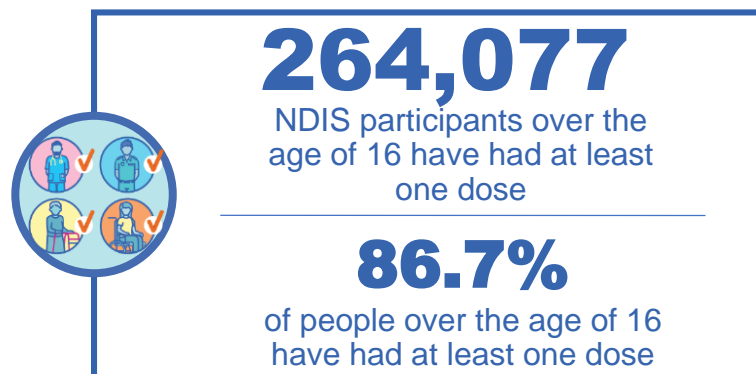
\*\*State level breakdown indicates the residential location and may not align to the state in which the vaccination occurred.

Source: Australian Immunisation Register

# National Disability Insurance Scheme (NDIS) reported vaccinations

Data as at:  
07 July 2022  
Updated weekly

Australia's COVID-19  
Vaccine Roadmap



## NDIS participant vaccinations

	People aged 16+ with at least one dose	People aged 16+ fully vaccinated	% People aged 16+ with at least one dose	% People aged 16+ fully vaccinated
ACT	4,967	4,905	88.9%	87.8%
NSW	80,766	79,502	87.3%	85.9%
NT	2,295	2,225	77.6%	75.2%
QLD	52,453	51,465	84.9%	83.3%
SA	21,630	21,133	84.4%	82.4%
TAS	6,600	6,449	87.0%	85.0%
VIC	70,118	68,967	87.9%	86.4%
WA	25,248	24,751	88.0%	86.3%
National	264,077	259,397	86.7%	85.2%

Source: Linkage between National Disability Insurance Agency data and the Australian Immunisation Register. Total NDIS participant numbers as at 30 June. Australian Immunisation Register data as at 06 July. Includes all participants regardless of residence type.

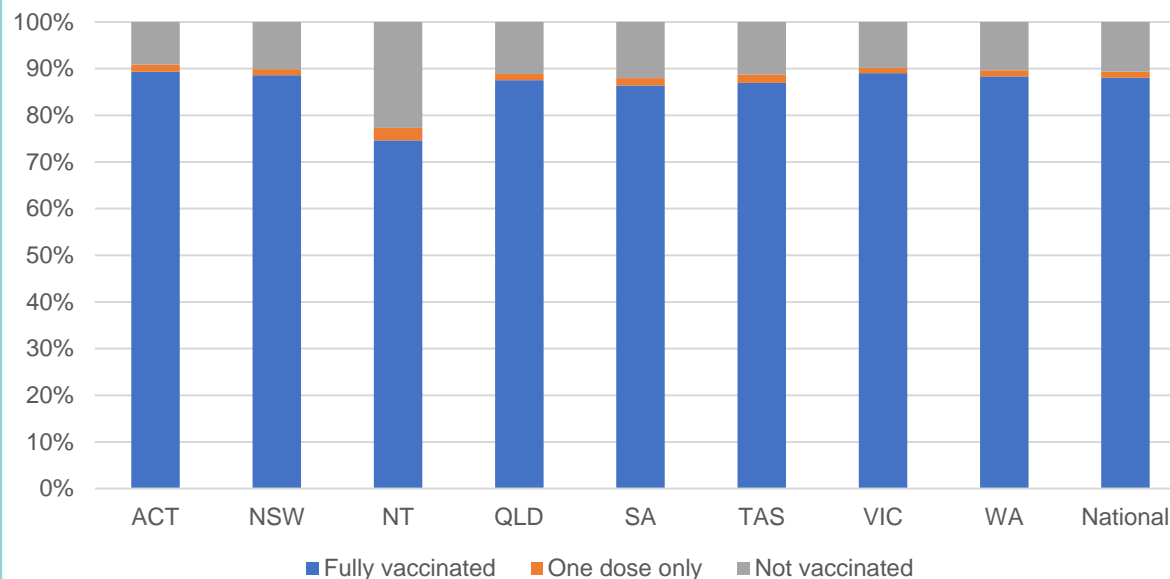
# National Disability Insurance Scheme (NDIS) reported vaccinations

Data as at:  
07 July 2022  
Updated weekly

Australia's COVID-19  
Vaccine Roadmap

NATIONAL	Total people with at least one dose	People fully vaccinated	Total number of individuals in cohort	% People with at least one dose	% People fully vaccinated
NDIS participants living in disability accommodation	21,321	21,001	23,858	89.4%	88.0%

## NDIS participants in disability and aged care accommodation



Source: Linkage between National Disability Insurance Agency data and the Australian Immunisation Register. Includes participants residing in disability accommodation only.

Source: Total NDIS participant numbers as at 30 June. Participant data as at 06 July. Australian Immunisation Register data as at 06 July. Worker data as at 06 July.

## NDIS workforce vaccinations

	NDIS workers with at least one dose	NDIS workers fully vaccinated	% NDIS workers with at least one dose	% NDIS workers fully vaccinated
NSW	128,323	123,394	98.3%	94.5%
VIC	117,599	114,365	98.4%	95.7%
QLD	71,472	70,626	97.9%	96.7%
WA	34,485	33,092	99.0%	95.0%
SA	35,267	33,506	98.6%	93.6%
TAS	12,424	12,017	98.8%	95.6%
ACT	12,340	12,313	99.8%	99.6%
NT	3,966	3,818	99.6%	95.9%
<b>TOTAL</b>	<b>415,876</b>	<b>403,131</b>	<b>98.4%</b>	<b>95.4%</b>

Source: the NDIS Commission has established a requirement for registered NDIS providers who provide intensive disability support services to report on the vaccination status of workers they employ, or otherwise engage, to deliver NDIS-funded supports and services, and who are required to be vaccinated in accordance with in-force state and territory public health orders. The statistics reflect data reported to the NDIS Commission by registered NDIS providers and should be considered indicative and subject to change

Note: Some registered NDIS providers are yet to report on the vaccination status of their workforce. The NDIS Commission is working with those providers around reporting requirements.

Remaining workers not included include those exempt from vaccination requirements, workers whose vaccination status is not yet verified by the provider (such as workers on leave) and provider reporting anomalies.



# Residential aged care vaccination rollout

Residential aged care facilities status

**175,438**

People fully vaccinated

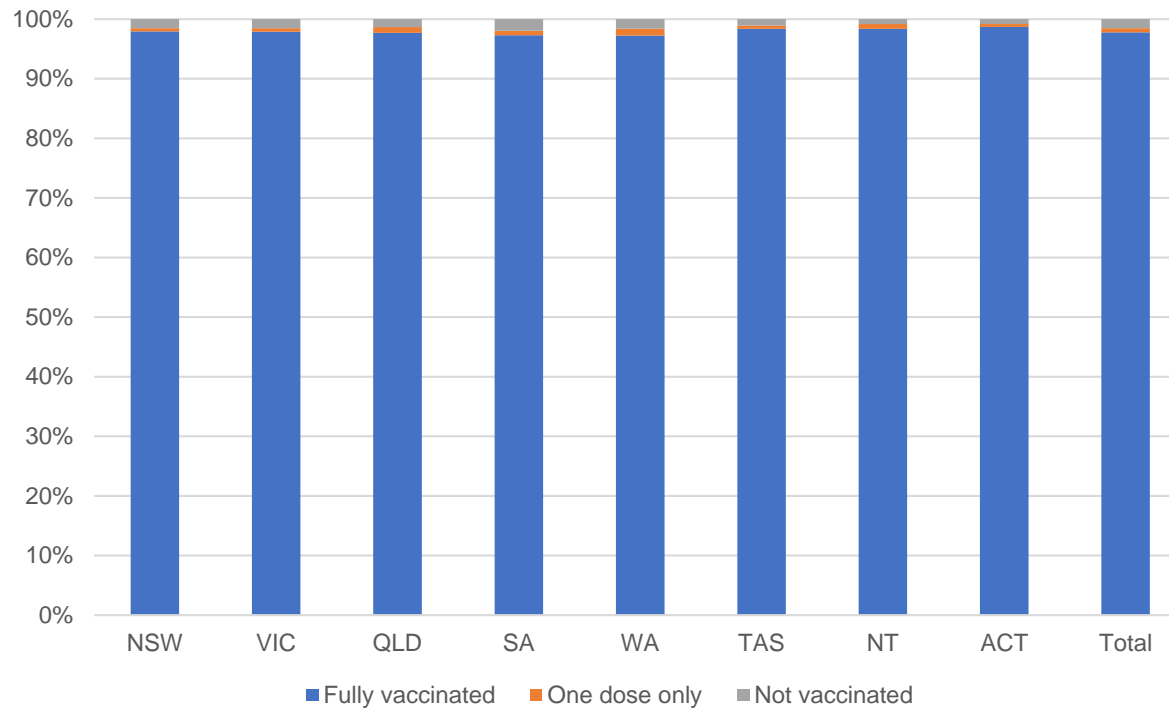
**176,706**

People with at least one dose

Australia's COVID-19 Vaccine Roadmap

Data as at:  
07 July 2022  
Updated weekly

## Aged care resident vaccinations



## Aged care worker vaccinations

Jurisdictions	Total workers with at least one dose	Workers fully vaccinated	% Workers with at least one dose	% Workers fully vaccinated
NSW	77,266	77,142	99.9%	99.7%
VIC	70,674	70,673	100.0%	100.0%
QLD	48,579	48,565	100.0%	100.0%
SA	26,594	26,585	100.0%	100.0%
WA	24,718	24,716	100.0%	100.0%
TAS	7,536	7,536	100.0%	100.0%
NT	904	904	100.0%	100.0%
ACT	2,954	2,954	100.0%	100.0%
Total	259,225	259,075	100.0%	99.9%

Source: Residential aged care provider self-reported COVID-19 vaccination information

\*Status updates are provided by facilities at least once per week. Reporting is updated Monday to Friday to encompass different facility updates being made on different days.

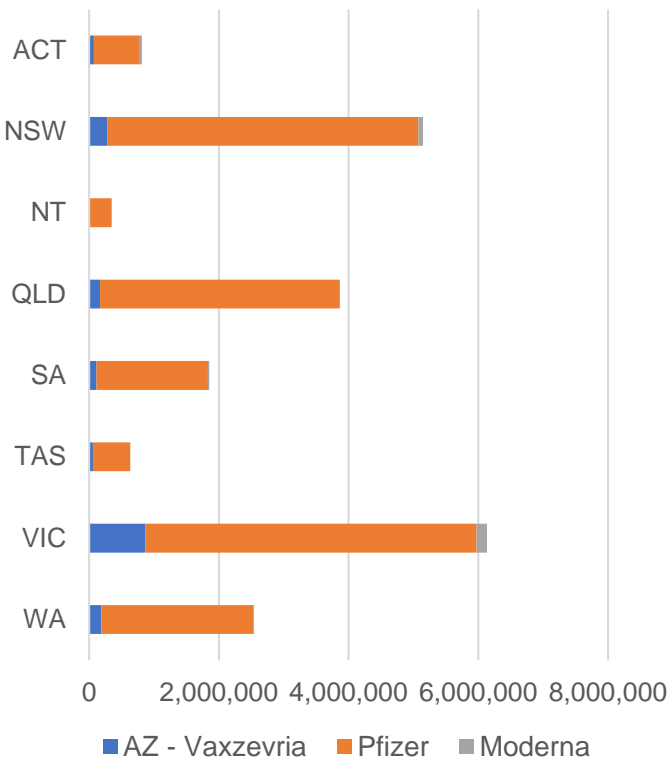
Data is sourced directly from Aged Care Service Providers and is not drawn or closely aligned with data from AIR due to inconsistencies and potential lags in uploading of records.



Data as at:  
11 Jul 2022

# Jurisdiction administered

Total vaccine doses administered in State and Territory clinics as at 11 July



**21,341,677** total vaccine doses administered  
in State and Territory clinics as at 11 July  
+ **9,916** recorded in the last 24 hours  
+ **29,368** recorded in the last 7 days

**NSW**  
**5,149,725**  
(+1,876 daily increase)

**VIC**  
**6,139,900**  
(+1,556 daily increase)

**QLD**  
**3,865,692**  
(+976 daily increase)

**WA**  
**2,540,697**  
(+2,435 daily increase)

**TAS**  
**631,526**  
(+569 daily increase)

**SA**  
**1,853,399**  
(+1,865 daily increase)

**ACT**  
**813,198**  
(+631 daily increase)

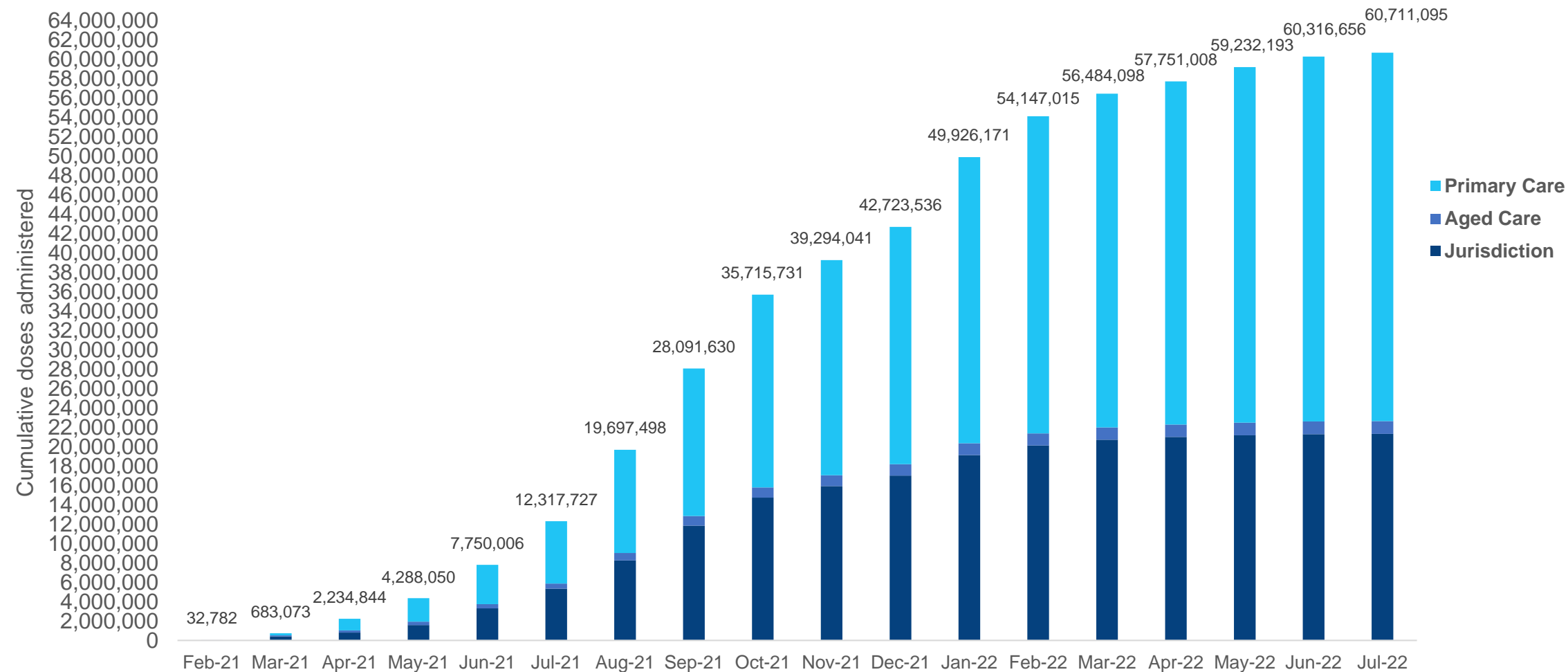
**NT**  
**347,540**  
(**<10** daily increase)

\*Sourced from the Australian Immunisation Register. Numbers are calculated as difference in daily cumulative reported numbers to allow for historical corrections.

Source: Australian Immunisation Register

# Cumulative doses administered by channel

Data as at:  
11 Jul 2022

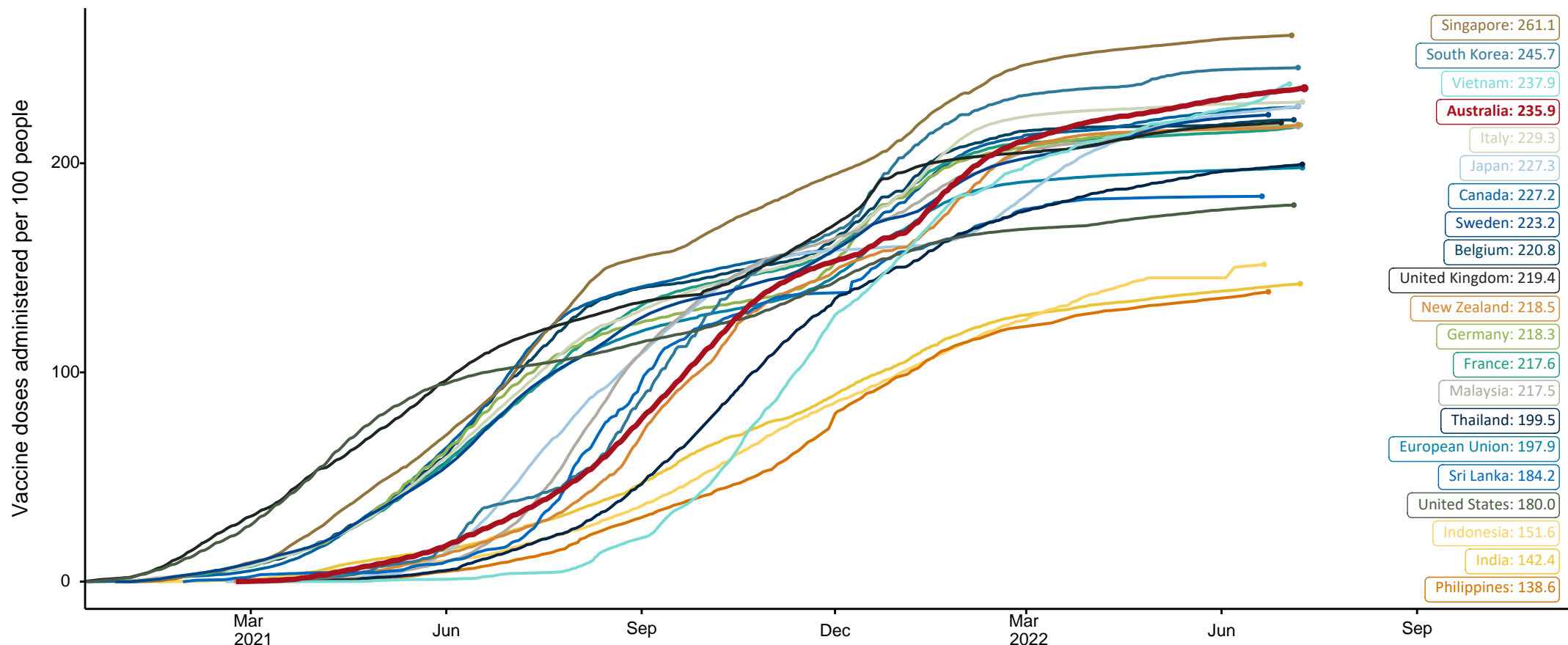


Source: Australian Immunisation Register

# COVID-19 vaccine doses per 100, Australia and select countries

Data as at:  
10 July 2022  
Updated weekly

Australia's COVID-19  
Vaccine Roadmap



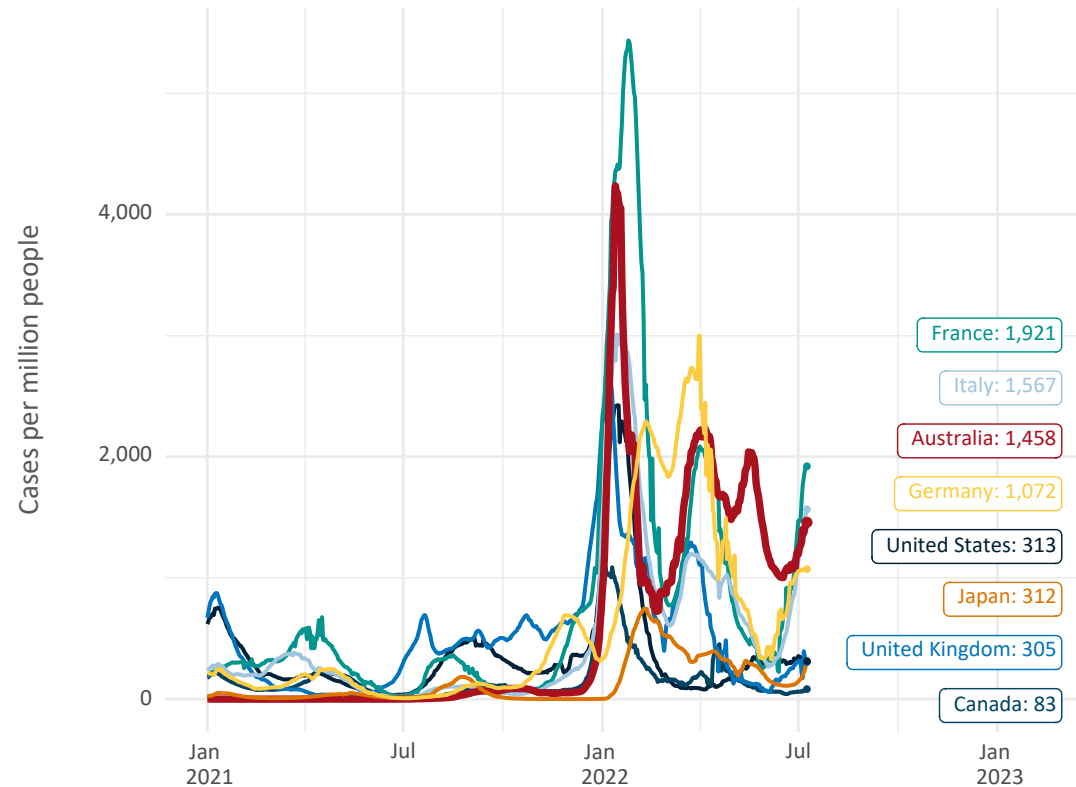
Note: From 11 January 2022, data for Australia includes all doses administered to people 5 and over. Prior to 11 January, data was for 12 and over.  
Source: Department of Health (Australia), Our World in Data (international)  
Latest data: 10 July

# International data – COVID-19

Data as at:  
10 July 2022  
Updated weekly

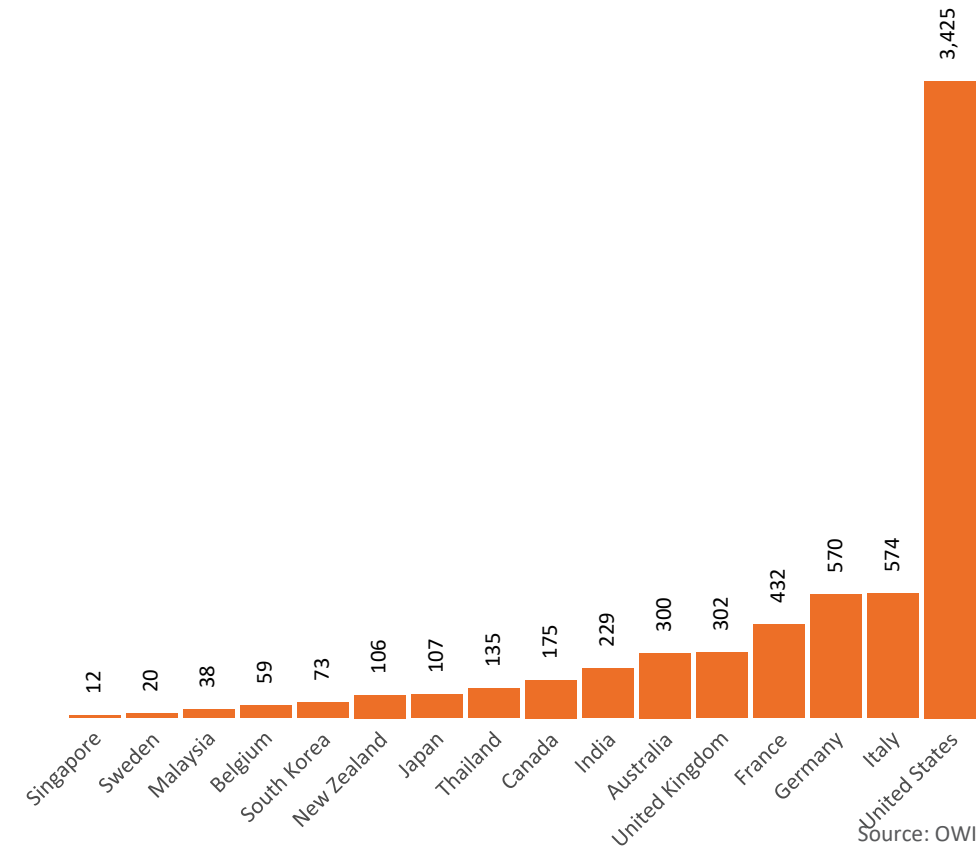
Australia's COVID-19  
Vaccine Roadmap

New daily cases per million since 2021, Australia and G7 countries  
Smoothed - 7 day average



Source: OWID  
Data downloaded: 11 Jul 2022 09:21  
Latest data: 09 Jul 2022

COVID-19 deaths in past 7 days - Australia and select countries



Source: OWID  
Data downloaded: 11 Jul 2022 09:21  
Latest data: 09 Jul 2022