



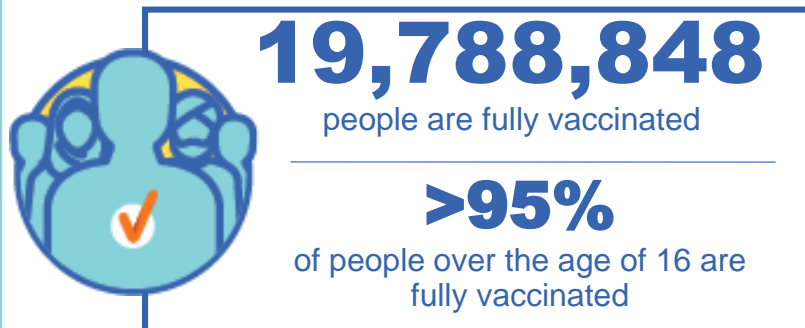
Australian Government
Operation COVID Shield

COVID-19 Vaccine Roll-out

11 July 2022

Data as at:
10 Jul 2022

Total vaccine doses



60,610,015 total vaccine
doses administered nationally as at 10 July

+8,090 recorded in the last 24 hours

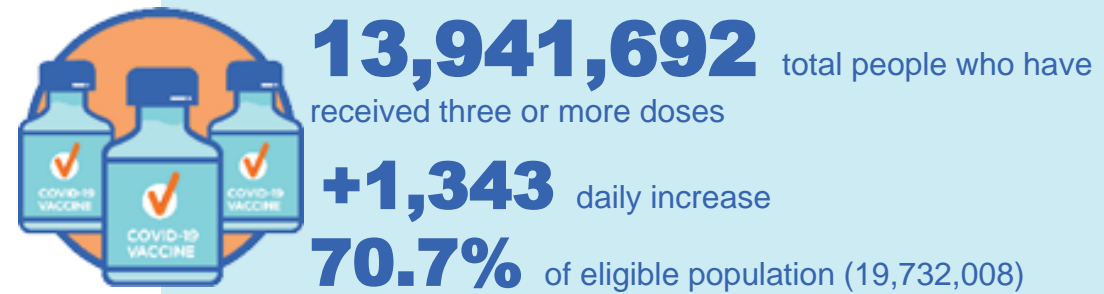
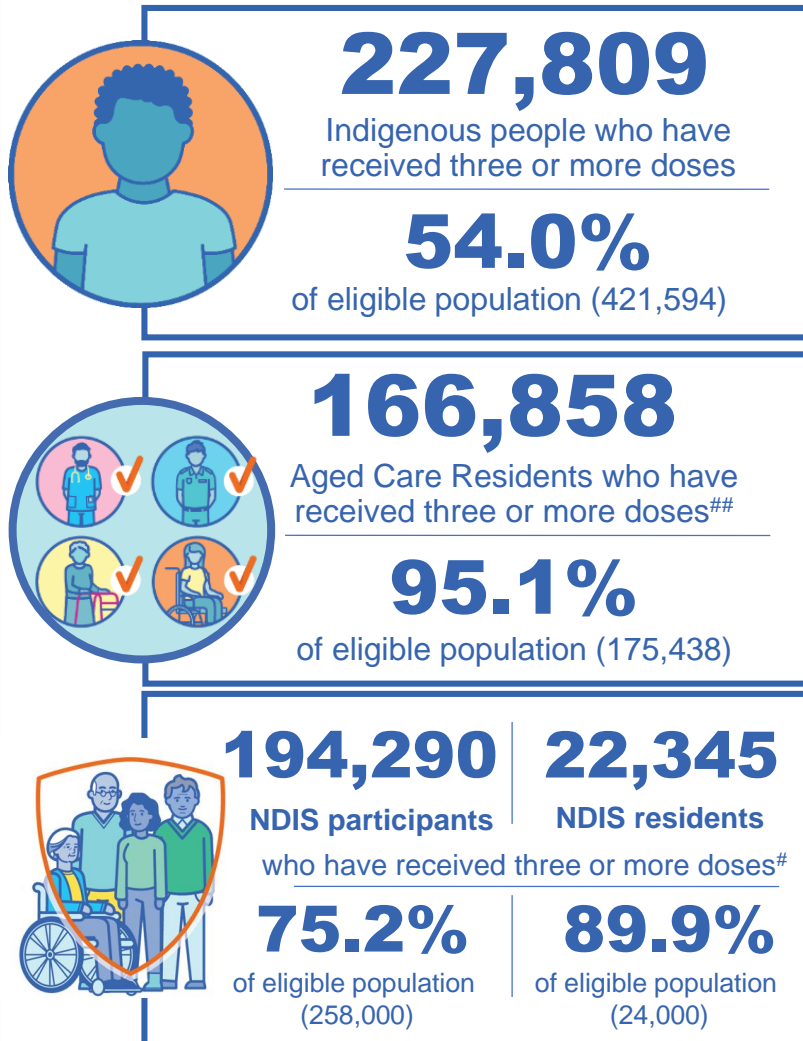


*Administration state breakdown indicates state in which a vaccine was administered

**Overall dose count includes instances of more than three doses per person in a small number of cases.

Source: Australian Immunisation Register

Booster Vaccinations



Data as at:
10 Jul 2022

	Number of People	Daily Increase	% of Eligible
NSW	4,257,295	451	68.3%
VIC	3,714,416	317	73.0%
QLD	2,418,129	317	63.6%
WA	1,707,066	104	82.8%
SA	999,738	128	74.3%
TAS	319,019	32	73.2%
ACT	275,042	15	79.2%
NT	131,727	<10	78.2%

*People may belong to multiple groups and could be represented in the above breakdowns multiple times.
NDIS participants data as at 06 July 2022. ## Aged Care Residents data as at 08 July 2022.

Source: Australian Immunisation Register

119,260 doses administered to persons residing in other territories or with missing residential information

Fourth Doses

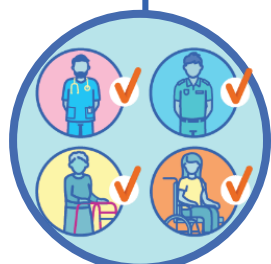
Data as at:
10 Jul 2022

Australia's COVID-19
Vaccine Roadmap



2,571,298 total people (16+) who have received four or more doses

+6,004 daily increase



2,233,100

People aged 65+ who have received four or more doses

58.5%

of eligible population (3,815,020)



94,331

Aged Care Residents who have received four or more doses[#]

67.8%

of eligible population (139,213)

	Number of People 16+	Daily Increase
ACT	49,038	107
NSW	830,945	1,365
NT	11,057	11
QLD	497,505	1,534
SA	209,328	509
TAS	72,733	328
VIC	632,716	1,438
WA	255,358	678

12,618 doses administered to persons residing in other territories or with missing residential information

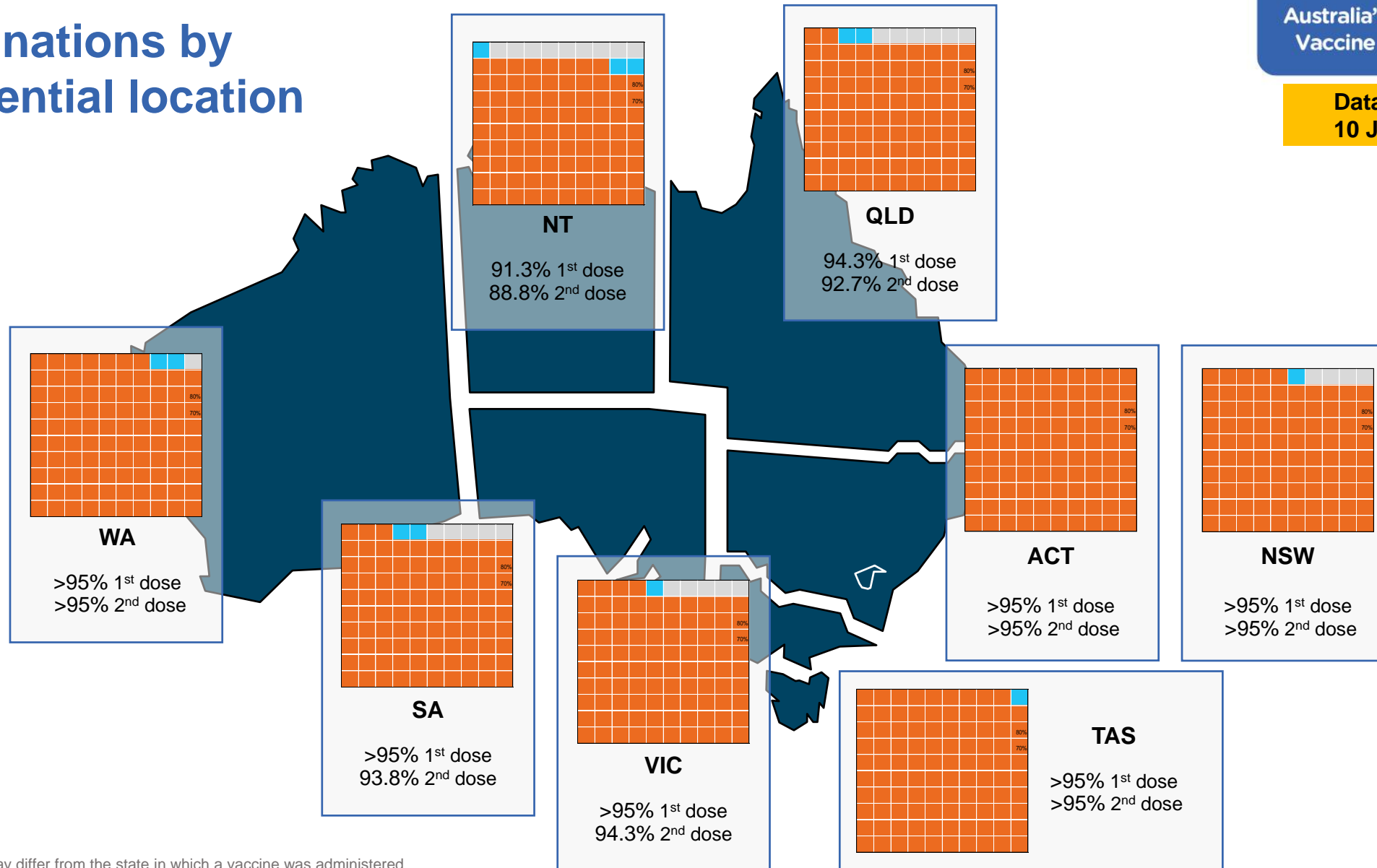
*People become eligible for a fourth dose three months after their third dose. Individuals may belong to multiple groups and could be represented in the above multiple times.
[#]Aged Care Residents data as at 07 July 2022.

Source: Australian Immunisation Register

Vaccinations by residential location

Australia's COVID-19
Vaccine Roadmap

Data as at:
10 Jul 2022



*Residential state may differ from the state in which a vaccine was administered

Commonwealth and Jurisdiction vaccine doses administered

Data as at:
10 Jul 2022



60,610,015 total vaccine
doses administered nationally as at 10 July

+ 8,090 recorded in the last 24 hours

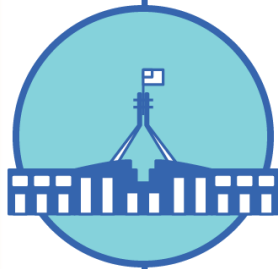


21,331,761

doses administered by state
and territory facilities

+ 1,145

recorded in the last 24 hours



39,278,254

doses administered by
commonwealth facilities

+ 6,945

recorded in the last 24 hours

37,958,064 total vaccine doses
administered in primary care settings

1,320,190 total vaccine doses
administered in aged care and disability
settings

NSW	Jurisdictions	Commonwealth
Cumulative	5,147,849	13,661,185
Daily increase	134	1,793

VIC	Jurisdictions	Commonwealth
Cumulative	6,138,344	9,743,480
Daily increase	23	1,916

QLD	Jurisdictions	Commonwealth
Cumulative	3,864,716	7,606,403
Daily increase	125	1,875

WA	Jurisdictions	Commonwealth
Cumulative	2,538,262	4,119,820
Daily increase	349	516

TAS	Jurisdictions	Commonwealth
Cumulative	630,957	746,648
Daily increase	247	144

SA	Jurisdictions	Commonwealth
Cumulative	1,851,534	2,372,330
Daily increase	213	527

ACT	Jurisdictions	Commonwealth
Cumulative	812,567	778,650
Daily increase	54	159

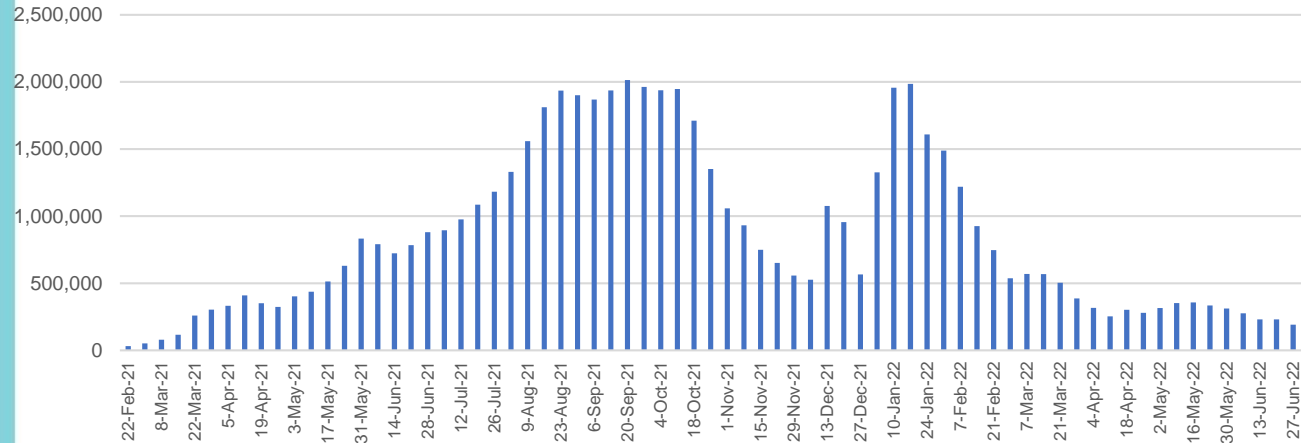
NT	Jurisdictions	Commonwealth
Cumulative	347,532	249,738
Daily increase	<10	15

Vaccine milestone charts

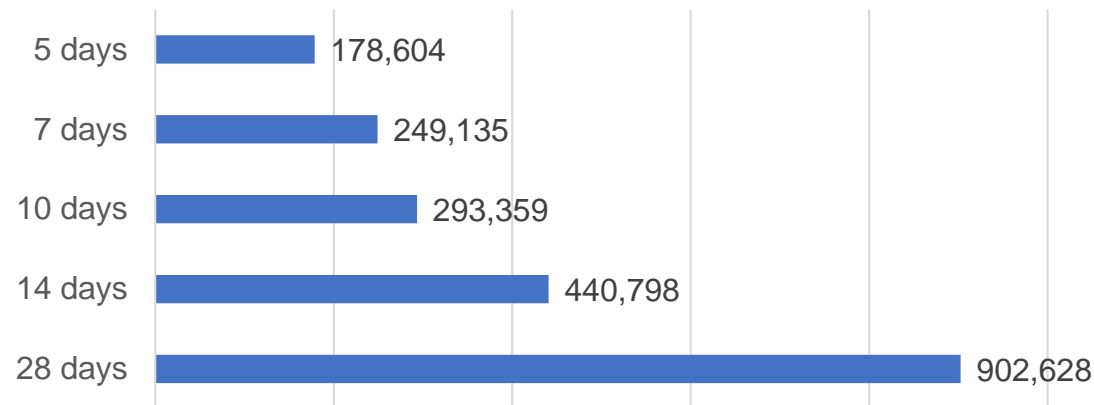
Data as at:
10 Jul 2022

Australia's COVID-19
Vaccine Roadmap

Doses Administered by Week

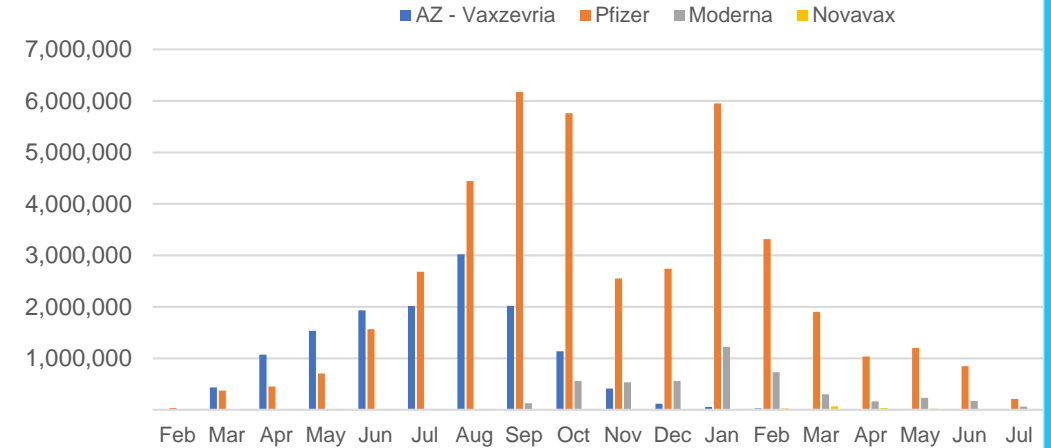


Doses Reported

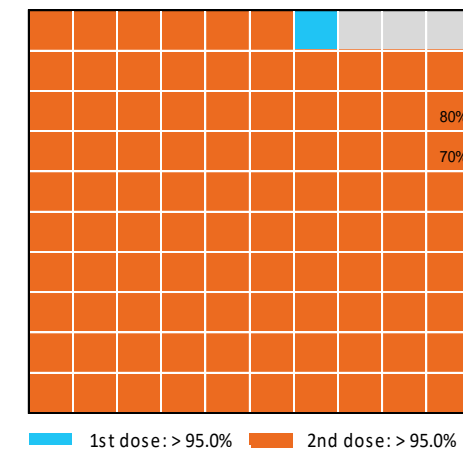


*Sourced from the Australian Immunisation Register.

Doses by administration month and vaccine type



Eligible population percentage coverage



*Each square represents 1% of the national population.
Squares are filled as milestones are achieved.

Doses by age and sex

First and second doses by age and sex

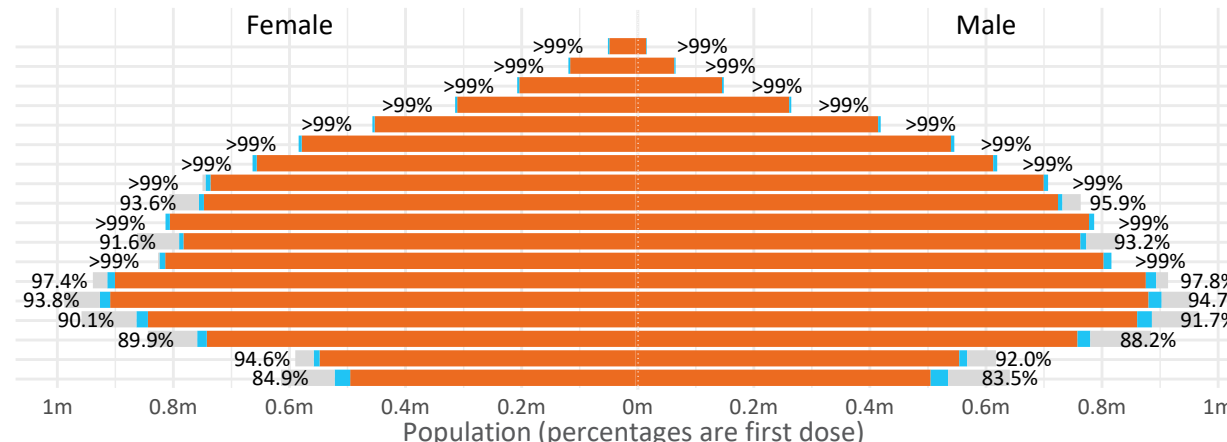
Australia's COVID-19
Vaccine Roadmap

Data as at:
10 Jul 2022

Age	Dose 1	Dose 2
95+	66,437 (>99%)	62,971 (>99%)
90-94	183,293 (>99%)	177,790 (>99%)
85-89	352,934 (>99%)	346,209 (>99%)
80-84	574,087 (>99%)	566,944 (>99%)
75-79	868,571 (>99%)	860,063 (>99%)
70-74	1,120,319 (>99%)	1,108,873 (>99%)
65-69	1,273,054 (>99%)	1,258,075 (>99%)
60-64	1,439,927 (>99%)	1,423,319 (>99%)
55-59	1,475,577 (94.9%)	1,458,823 (93.8%)
50-54	1,586,778 (>99%)	1,569,806 (>99%)
45-49	1,550,374 (92.5%)	1,531,993 (91.4%)
40-44	1,627,682 (>99%)	1,603,668 (99.0%)
35-39	1,795,293 (97.8%)	1,763,031 (96.1%)
30-34	1,820,619 (94.6%)	1,778,523 (92.5%)
25-29	1,744,056 (91.5%)	1,696,011 (89.0%)
20-24	1,530,981 (89.4%)	1,490,449 (87.0%)
16-19	1,116,381 (93.4%)	1,092,300 (91.3%)
12-15	1,047,414 (84.2%)	991,128 (79.7%)

	16+	50+	12-15	5-11
Dose 1	97.61% (20,126,363 doses / 20,619,959 people)	>99% (8,940,977 doses / 8,749,703 people)	84.20% (1,047,414 doses / 1,243,990 people)	52.27% (1,190,091 doses / 2,276,638 people)
Dose 2	95.97% (19,788,848 doses / 20,619,959 people)	>99% (8,832,873 doses / 8,749,703 people)	79.67% (991,128 doses / 1,243,990 people)	39.97% (909,998 doses / 2,276,638 people)

Dose 1 Dose 2 Population

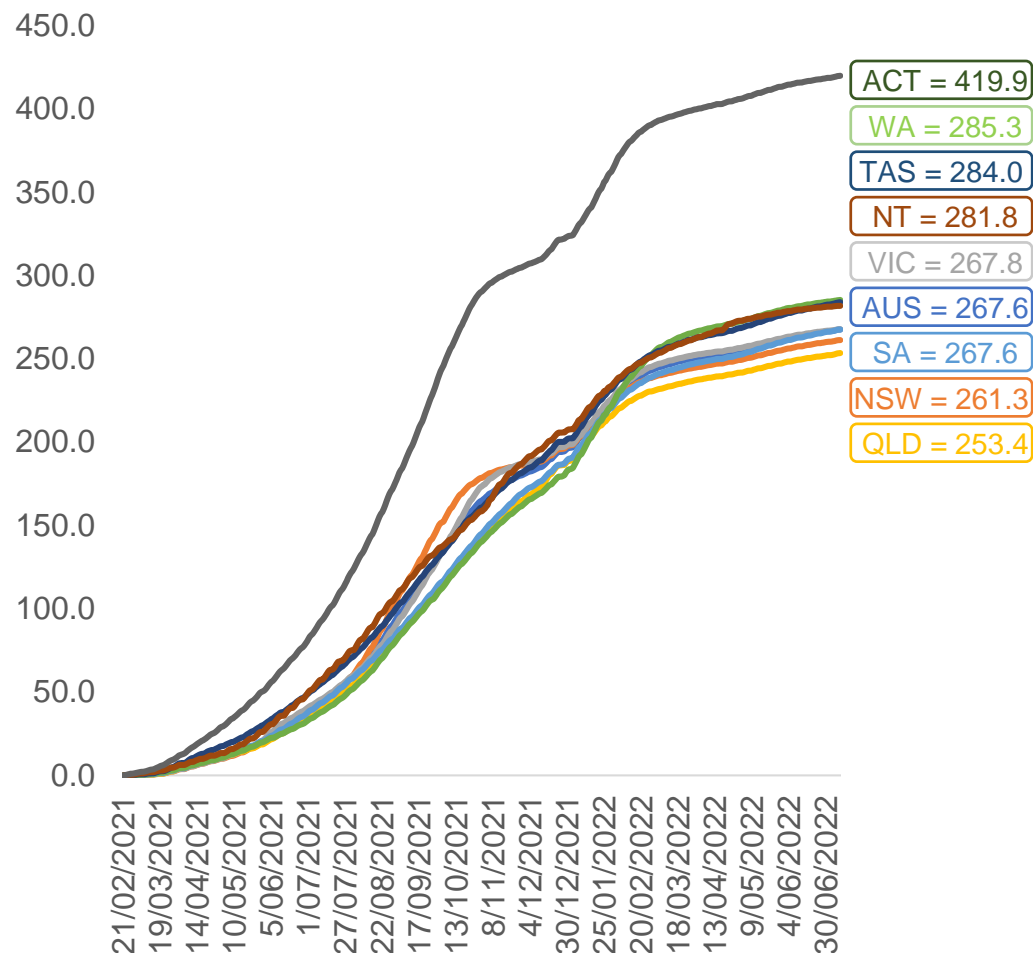


	AUS	ACT	NSW	NT	QLD	SA	TAS	VIC	WA
16 and over - dose 1	20,126,363	353,754	6,347,720	173,970	3,878,268	1,380,497	446,346	5,179,352	2,102,357
16 and over - dose 2	19,788,848	347,992	6,248,990	169,298	3,814,469	1,351,182	437,352	5,100,419	2,071,292
16 and over - population	20,619,959*	344,037	6,565,651	190,571	4,112,707	1,440,400	440,172	5,407,574	2,114,978
16 and over % with dose 1	97.61%	>99%	96.68%	91.29%	94.30%	95.84%	>99%	95.78%	>99%
16 and over % with dose 2	95.97%	>99%	95.18%	88.84%	92.75%	93.81%	>99%	94.32%	97.93%
5 to 11 - dose 1	1,190,091	31,715	355,629	13,108	206,182	83,502	28,408	324,191	139,899
5 to 11 - dose 2	909,998	27,514	278,459	8,819	151,557	64,149	23,266	248,527	103,116
5 to 11 - population	2,276,638	39,789	716,460	24,750	478,731	148,816	45,033	578,499	244,154
5 to 11 % with dose 1	52.27%	79.71%	49.64%	52.96%	43.07%	56.11%	63.08%	56.04%	57.30%
5 to 11 % with dose 2	39.97%	69.15%	38.87%	35.63%	31.66%	43.11%	51.66%	42.96%	42.23%
12 to 15 - dose 1	1,047,414	20,115	322,207	10,729	205,224	68,106	22,782	273,688	115,364
12 to 15 - dose 2	991,128	19,553	307,760	9,662	191,617	64,327	21,673	261,812	106,753
12 to 15 - population	1,243,990	19,693	390,330	13,060	270,146	82,747	26,308	308,611	132,869
12 to 15 % with dose 1	84.20%	>99%	82.55%	82.15%	75.97%	82.31%	86.60%	88.68%	86.83%
12 to 15 % with dose 2	79.67%	>99%	78.85%	73.98%	70.93%	77.74%	82.38%	84.84%	80.34%

*National population will not equal sum of listed jurisdictions due to a small number of people counted in national population residing in some 'other' territories. Sum of state doses will not add to national total as some records are unable to be geocoded to a State or Territory.
Doses sourced from Australian Immunisation Register, population from ABS ERP June 2020

Vaccinations by location

Cumulative total doses administered vs eligible state populations*

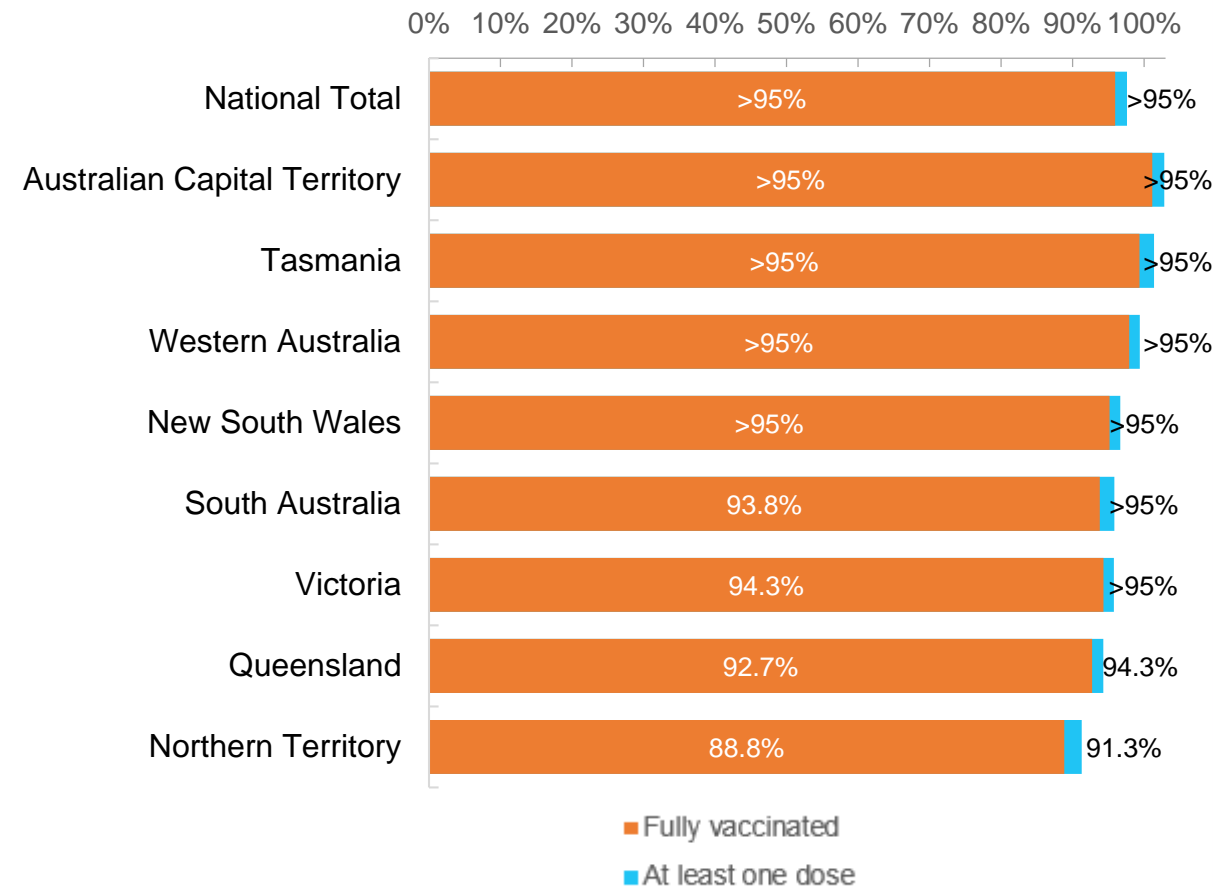


*Not an indication of percentage vaccinated, numbers will exceed 100 due to multiple doses required per person of the population. All doses are included for those aged 12 and above, and are based on vaccination provider location.

Data as at:
10 Jul 2022

Australia's COVID-19
Vaccine Roadmap

First and Second Doses by residential location



Aboriginal and Torres Strait Islander peoples

Number of people vaccinated

Data as at:
05 Jul 2022
Updated weekly

Australia's COVID-19
Vaccine Roadmap



443,710

people over the age of 16
have had at least one dose

85.0%

of people over the age of 16
have had at least one dose



425,479

people over the age of 16
are fully vaccinated

81.5%

of people over the age of 16 are
fully vaccinated



People aged 12 – 15 years

47,820

41,926

67.7%

59.4%

At least one dose

Fully vaccinated

178 Aboriginal community controlled health services (ACCHS)

0#

50

27

44

12

3

21

21

ACT

NSW

NT

QLD

SA

TAS

VIC

WA

Medicare Address State ^{##}	Individuals Dose 1	Individuals Dose 1 %	Individuals Dose 2	Individuals Dose 2 %
Australian Capital Territory	4,800	91.8%	4,680	89.5%
New South Wales	136,008	87.3%	132,965	85.4%
Northern Territory	41,498	89.7%	39,543	85.5%
Queensland	116,679	81.8%	111,358	78.1%
South Australia	20,088	80.6%	18,726	75.1%
Tasmania	13,900	88.9%	13,499	86.3%
Victoria	35,711	90.4%	34,923	88.4%
Western Australia	53,593	86.8%	49,992	81.0%
Unknown/Other Territories	21,433	70.4%	19,793	65.1%
Totals	443,710	85.0%	425,479	81.5%

Source: Australian Immunisation Register

*Identifying as Aboriginal and Torres Strait Islander is optional and the estimated population may be under reported.

**Includes all Aboriginal and Torres Strait Islander peoples who have received a vaccination, not limited to those administered in an ACCHS setting

##ACCHS in the ACT are currently operating as a Commonwealth Vaccine Clinics so not included to avoid double counting

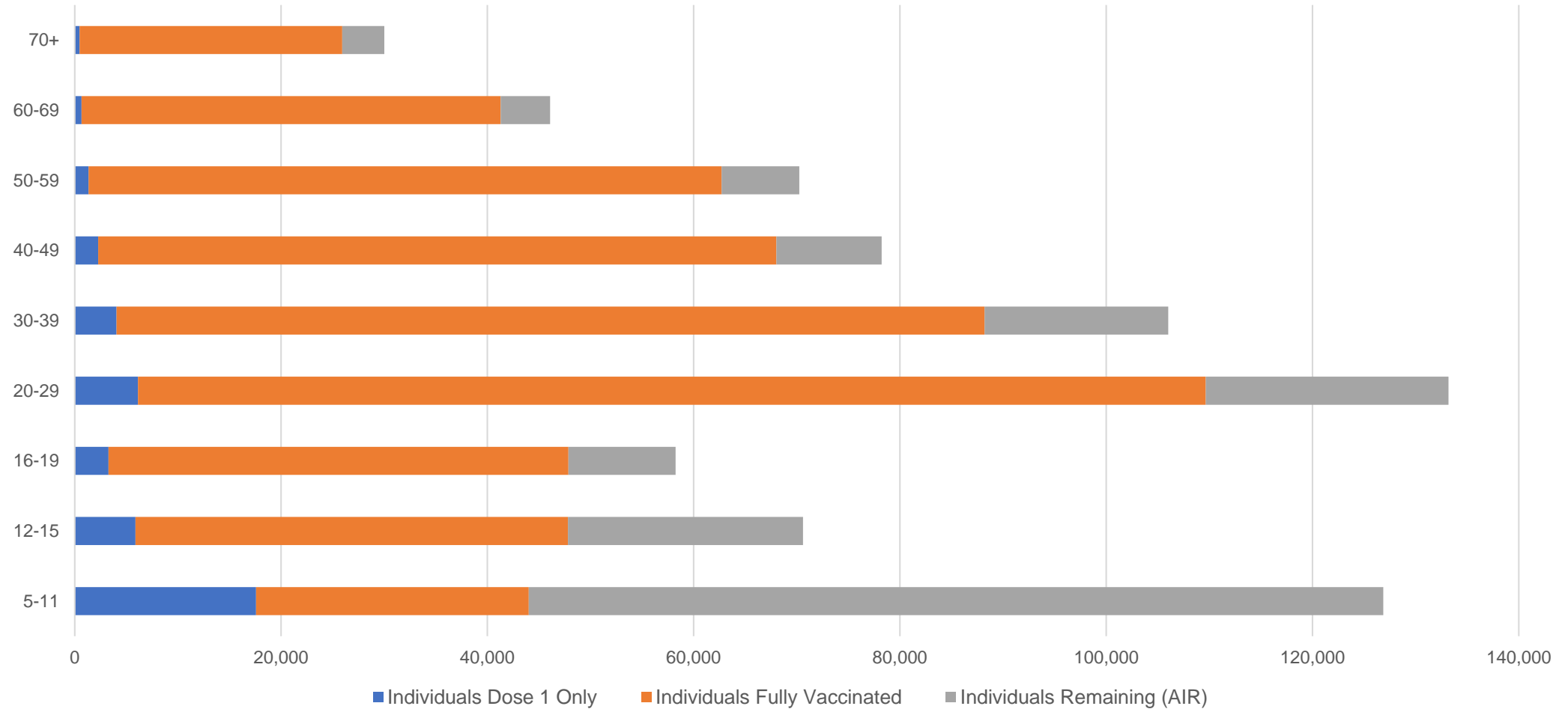
##The above table includes all identified Aboriginal and Torres Strait Islander people who are aged 16 and above by their state of residence.

Aboriginal and Torres Strait Islander peoples

Number of people vaccinated by age

Data as at:
05 Jul 2022
Updated weekly

Australia's COVID-19
Vaccine Roadmap



Source: Australian Immunisation Register

Commonwealth primary care

Data as at:
10 Jul 2022

Australia's COVID-19
Vaccine Roadmap



Primary care vaccine administration sites

5,697	127	178	3,613
GPs	CVCs	ACCHS	Pharmacies



37,958,064 total vaccine doses administered
primary care settings as at 10 July
+ 6,941 recorded in the last 24 hours

Primary care vaccinations by provider type

	Doses administered	Daily increase	7 day increase
General Practice* includes other Commonwealth	30,271,931	2,842	131,733
Pharmacy	7,686,133	4,099	93,491

NSW
13,087,795
(+2,050 daily increase)

VIC
9,410,829
(+1,821 daily increase)

QLD
7,322,000
(+1,896 daily increase)

WA
3,979,231
(+478 daily increase)

TAS
725,721
(+153 daily increase)

SA
2,291,059
(+481 daily increase)

ACT
601,087
(+141 daily increase)

NT
223,612
(+10 daily increase)

316,730

doses administered to persons
residing in other territories or with
missing residential information

*General practice includes Commonwealth Vaccination Clinics, Aboriginal Community Health Centres, Royal Flying Doctor Service and other Commonwealth vaccination facilities

Source: Australian Immunisation Register

Data as at:
10 Jul 2022

Commonwealth aged care and disability doses administered



1,320,190 (<10 last 24 hours)

Total vaccine doses administered in aged care and disability facilities as at 10 July

Number of doses administered as part of the Commonwealth aged and disability care rollout

NSW
572,882
(<10 daily increase)

VIC
248,008
(+13 daily increase)

QLD
210,466
(<10 daily increase)

WA
112,748
(<10 daily increase)

TAS
23,770
(<10 daily increase)

SA
86,469
(<10 daily increase)

ACT
17,948
(<10 daily increase)

NT
7,705
(<10 daily increase)

40,194

doses administered to persons
residing in other territories or with
missing residential information

*Sourced from the Australian Immunisation Register. Includes all persons vaccinated at participating residential aged care, disability and related industry settings.

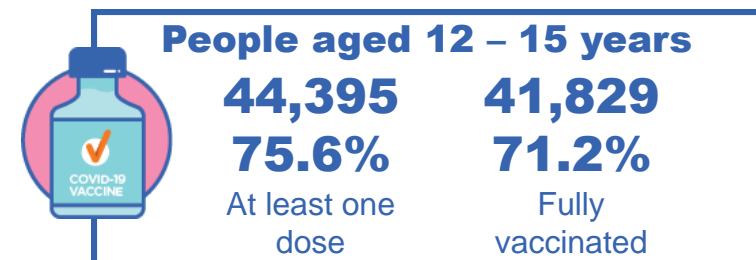
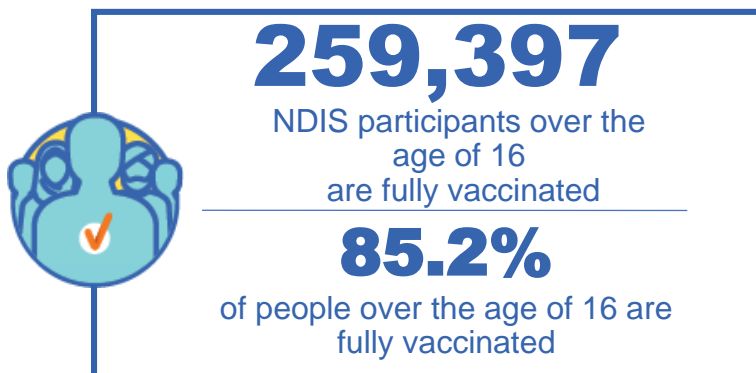
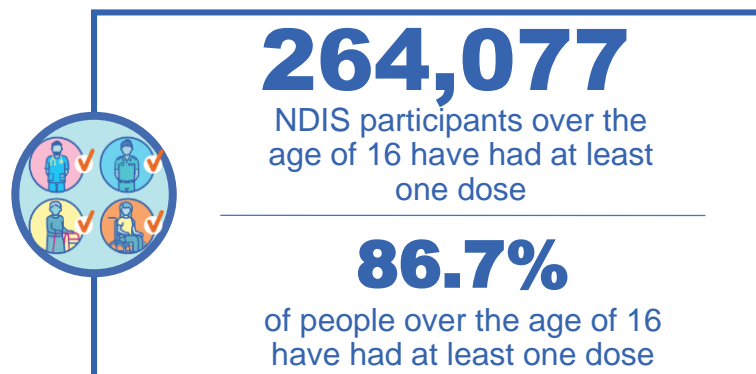
**State level breakdown indicates the residential location and may not align to the state in which the vaccination occurred.

Source: Australian Immunisation Register

National Disability Insurance Scheme (NDIS) reported vaccinations

Data as at:
07 July 2022
Updated weekly

Australia's COVID-19
Vaccine Roadmap



NDIS participant vaccinations

	People aged 16+ with at least one dose	People aged 16+ fully vaccinated	% People aged 16+ with at least one dose	% People aged 16+ fully vaccinated
ACT	4,967	4,905	88.9%	87.8%
NSW	80,766	79,502	87.3%	85.9%
NT	2,295	2,225	77.6%	75.2%
QLD	52,453	51,465	84.9%	83.3%
SA	21,630	21,133	84.4%	82.4%
TAS	6,600	6,449	87.0%	85.0%
VIC	70,118	68,967	87.9%	86.4%
WA	25,248	24,751	88.0%	86.3%
National	264,077	259,397	86.7%	85.2%

Source: Linkage between National Disability Insurance Agency data and the Australian Immunisation Register. Total NDIS participant numbers as at 30 June. Australian Immunisation Register data as at 06 July. Includes all participants regardless of residence type.

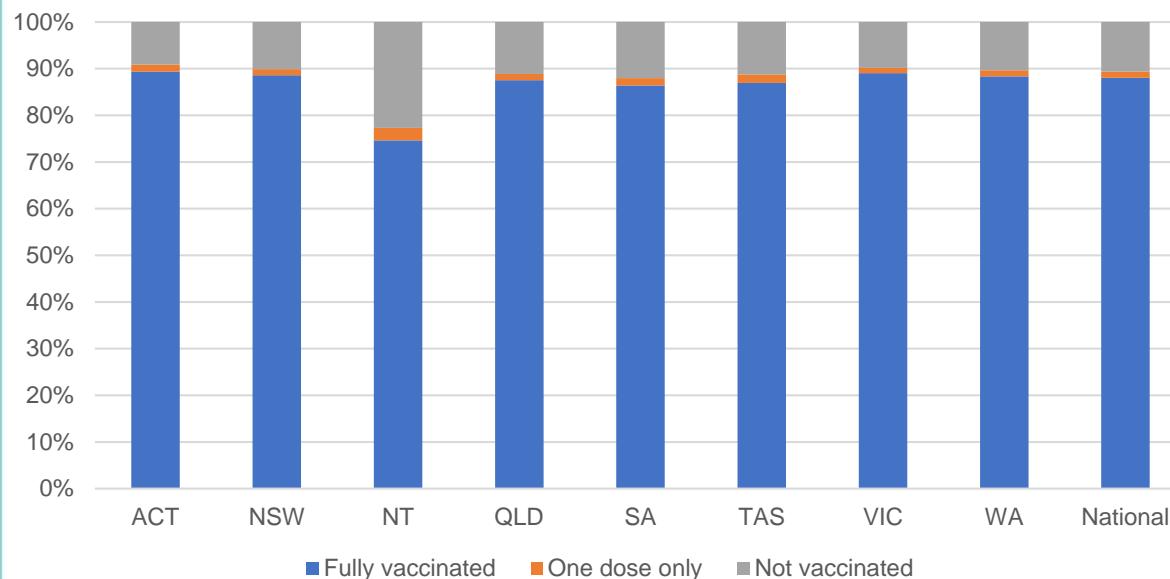
National Disability Insurance Scheme (NDIS) reported vaccinations

Data as at:
07 July 2022
Updated weekly

Australia's COVID-19
Vaccine Roadmap

NATIONAL	Total people with at least one dose	People fully vaccinated	Total number of individuals in cohort	% People with at least one dose	% People fully vaccinated
NDIS participants living in disability accommodation	21,321	21,001	23,858	89.4%	88.0%

NDIS participants in disability and aged care accommodation



Source: Linkage between National Disability Insurance Agency data and the Australian Immunisation Register. Includes participants residing in disability accommodation only.

Source: Total NDIS participant numbers as at 30 June. Participant data as at 06 July. Australian Immunisation Register data as at 06 July. Worker data as at 06 July.

NDIS workforce vaccinations

	NDIS workers with at least one dose	NDIS workers fully vaccinated	% NDIS workers with at least one dose	% NDIS workers fully vaccinated
NSW	128,323	123,394	98.3%	94.5%
VIC	117,599	114,365	98.4%	95.7%
QLD	71,472	70,626	97.9%	96.7%
WA	34,485	33,092	99.0%	95.0%
SA	35,267	33,506	98.6%	93.6%
TAS	12,424	12,017	98.8%	95.6%
ACT	12,340	12,313	99.8%	99.6%
NT	3,966	3,818	99.6%	95.9%
TOTAL	415,876	403,131	98.4%	95.4%

Source: the NDIS Commission has established a requirement for registered NDIS providers who provide intensive disability support services to report on the vaccination status of workers they employ, or otherwise engage, to deliver NDIS-funded supports and services, and who are required to be vaccinated in accordance with in-force state and territory public health orders. The statistics reflect data reported to the NDIS Commission by registered NDIS providers and should be considered indicative and subject to change

Note: Some registered NDIS providers are yet to report on the vaccination status of their workforce. The NDIS Commission is working with those providers around reporting requirements.

Remaining workers not included include those exempt from vaccination requirements, workers whose vaccination status is not yet verified by the provider (such as workers on leave) and provider reporting anomalies.

Residential aged care vaccination rollout

Residential aged care facilities status

175,438

People fully vaccinated

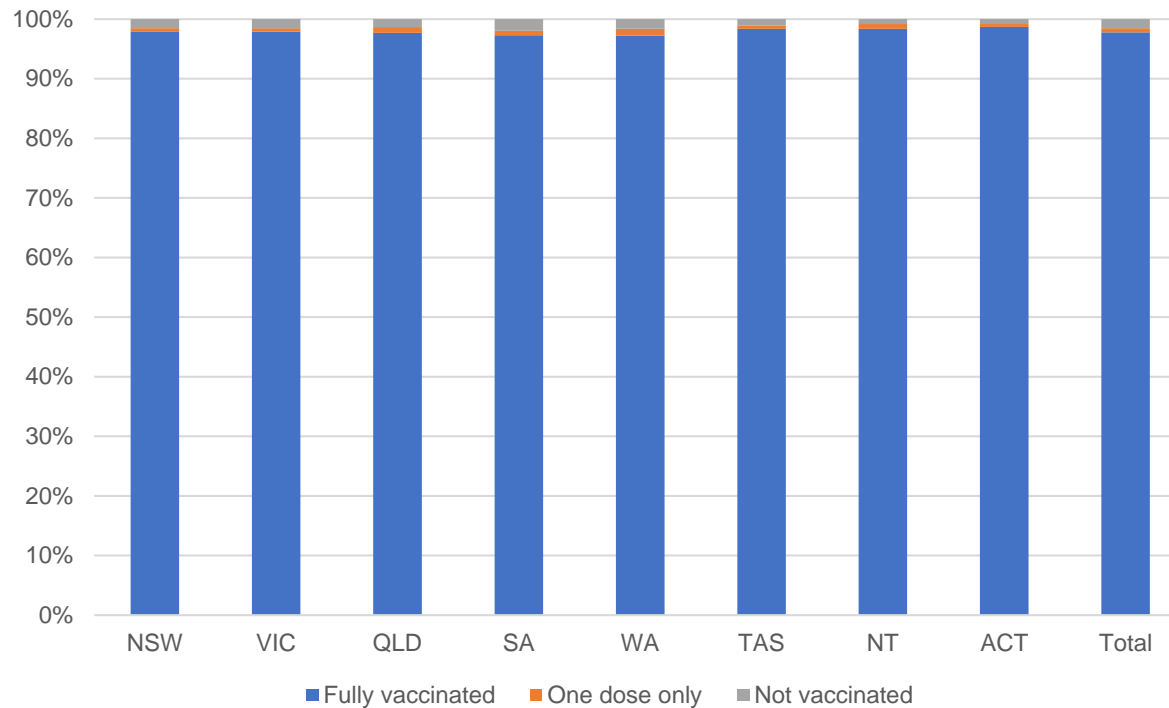
176,706

People with at least one dose

Australia's COVID-19 Vaccine Roadmap

Data as at:
07 July 2022
Updated weekly

Aged care resident vaccinations



Aged care worker vaccinations

Jurisdictions	Total workers with at least one dose	Workers fully vaccinated	% Workers with at least one dose	% Workers fully vaccinated
NSW	77,266	77,142	99.9%	99.7%
VIC	70,674	70,673	100.0%	100.0%
QLD	48,579	48,565	100.0%	100.0%
SA	26,594	26,585	100.0%	100.0%
WA	24,718	24,716	100.0%	100.0%
TAS	7,536	7,536	100.0%	100.0%
NT	904	904	100.0%	100.0%
ACT	2,954	2,954	100.0%	100.0%
Total	259,225	259,075	100.0%	99.9%

Source: Residential aged care provider self-reported COVID-19 vaccination information

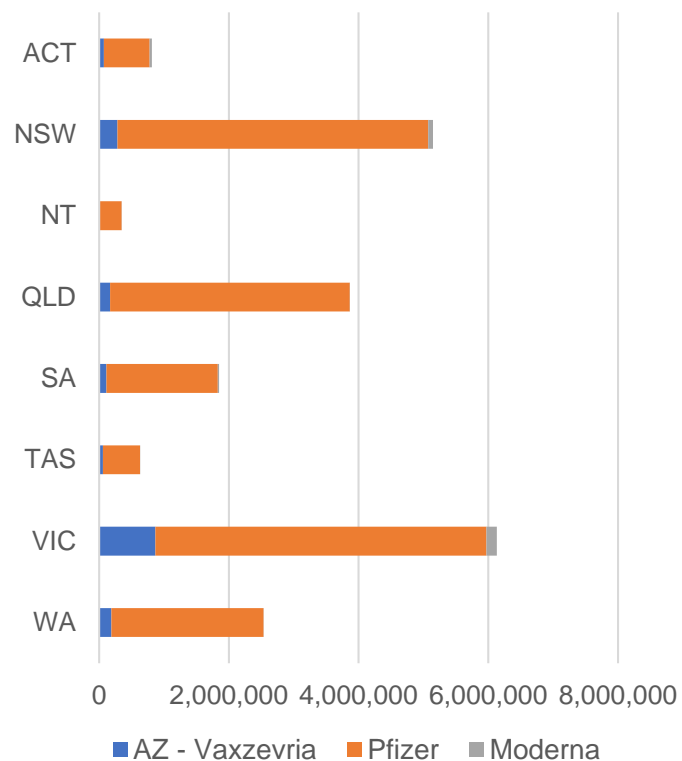
*Status updates are provided by facilities at least once per week. Reporting is updated Monday to Friday to encompass different facility updates being made on different days.

Data is sourced directly from Aged Care Service Providers and is not drawn or closely aligned with data from AIR due to inconsistencies and potential lags in uploading of records.

Data as at:
10 Jul 2022

Jurisdiction administered

Total vaccine doses administered in State and Territory clinics as at 10 July



21,331,761 total vaccine doses administered
in State and Territory clinics as at 10 July
+ **1,145** recorded in the last 24 hours
+ **21,782** recorded in the last 7 days

NSW
5,147,849
(+134 daily
increase)

VIC
6,138,344
(+23 daily
increase)

QLD
3,864,716
(+125 daily
increase)

WA
2,538,262
(+349 daily
increase)

TAS
630,957
(+247 daily
increase)

SA
1,851,534
(+213 daily
increase)

ACT
812,567
(+54 daily
increase)

NT
347,532
(**<10** daily
increase)

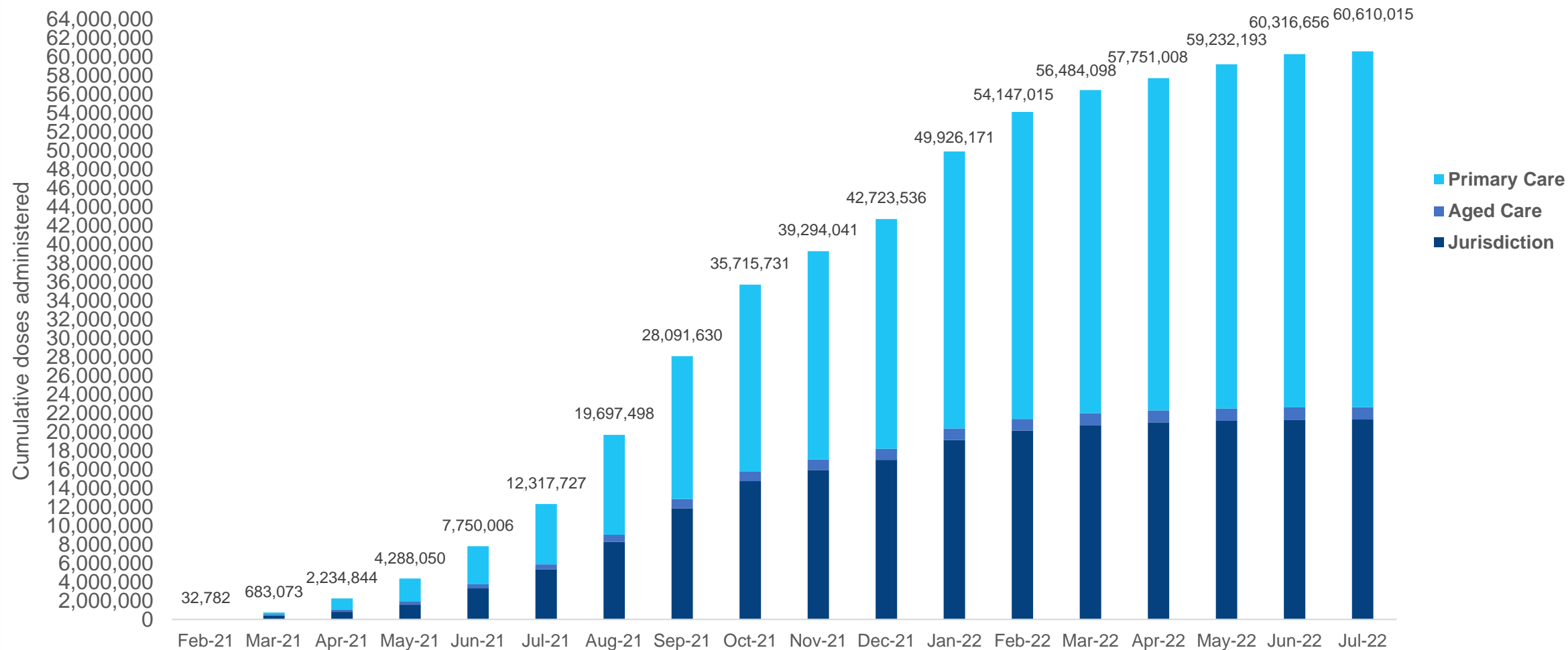
*Sourced from the Australian Immunisation Register. Numbers are calculated as difference in daily cumulative reported numbers to allow for historical corrections.

Source: Australian Immunisation Register

Cumulative doses administered by channel

Data as at:
10 Jul 2022

Australia's COVID-19
Vaccine Roadmap

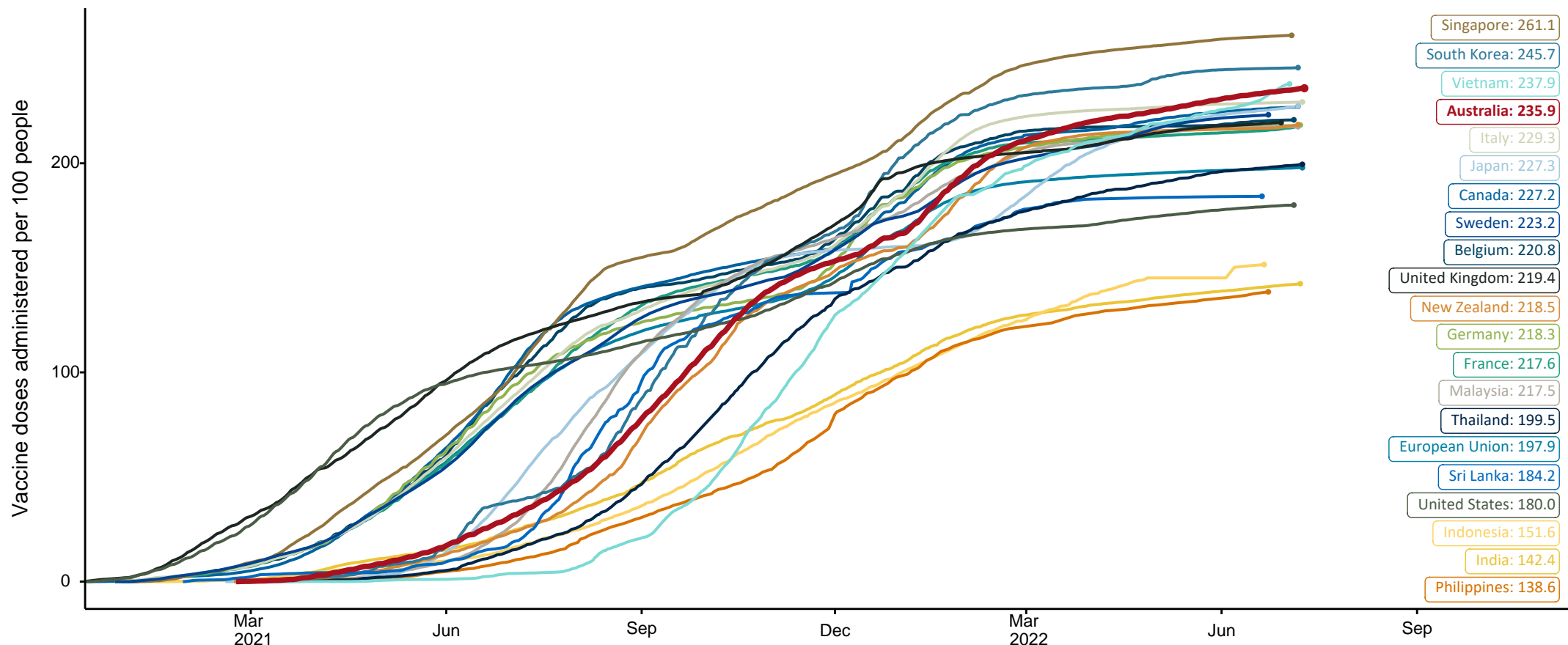


Source: Australian Immunisation Register

COVID-19 vaccine doses per 100, Australia and select countries

Data as at:
10 July 2022
Updated weekly

Australia's COVID-19
Vaccine Roadmap



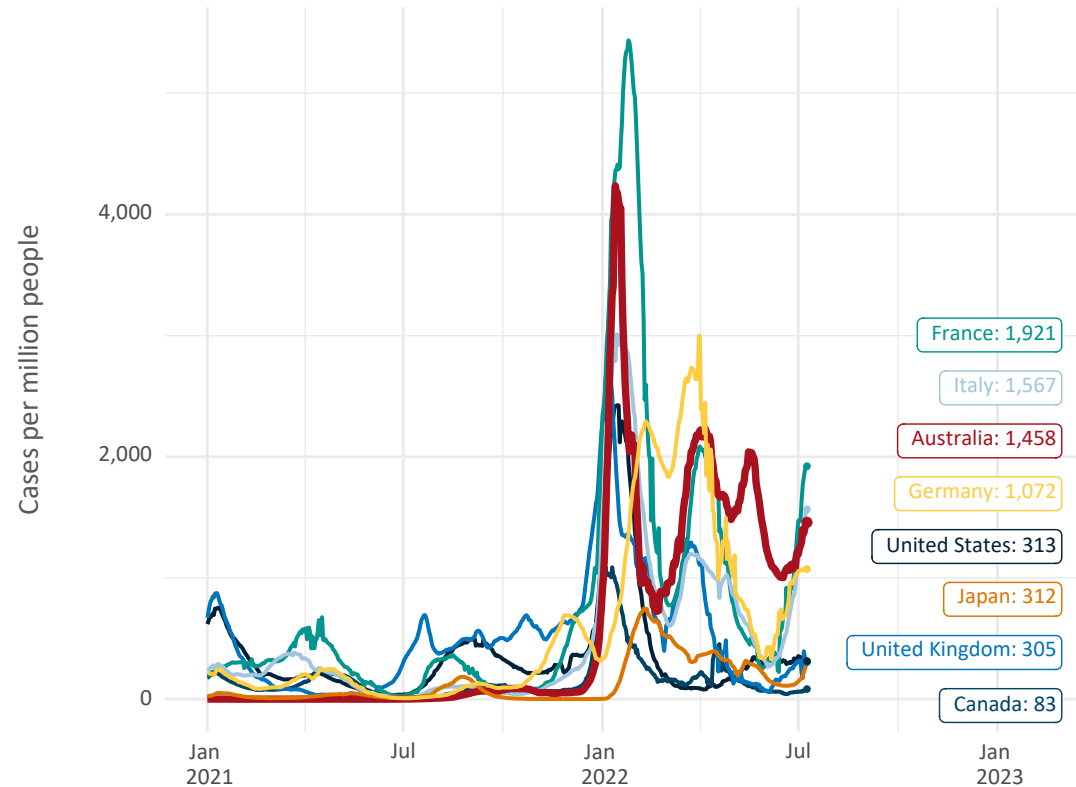
Note: From 11 January 2022, data for Australia includes all doses administered to people 5 and over. Prior to 11 January, data was for 12 and over.
Source: Department of Health (Australia), Our World in Data (international)
Latest data: 10 July

International data – COVID-19

Data as at:
10 July 2022
Updated weekly

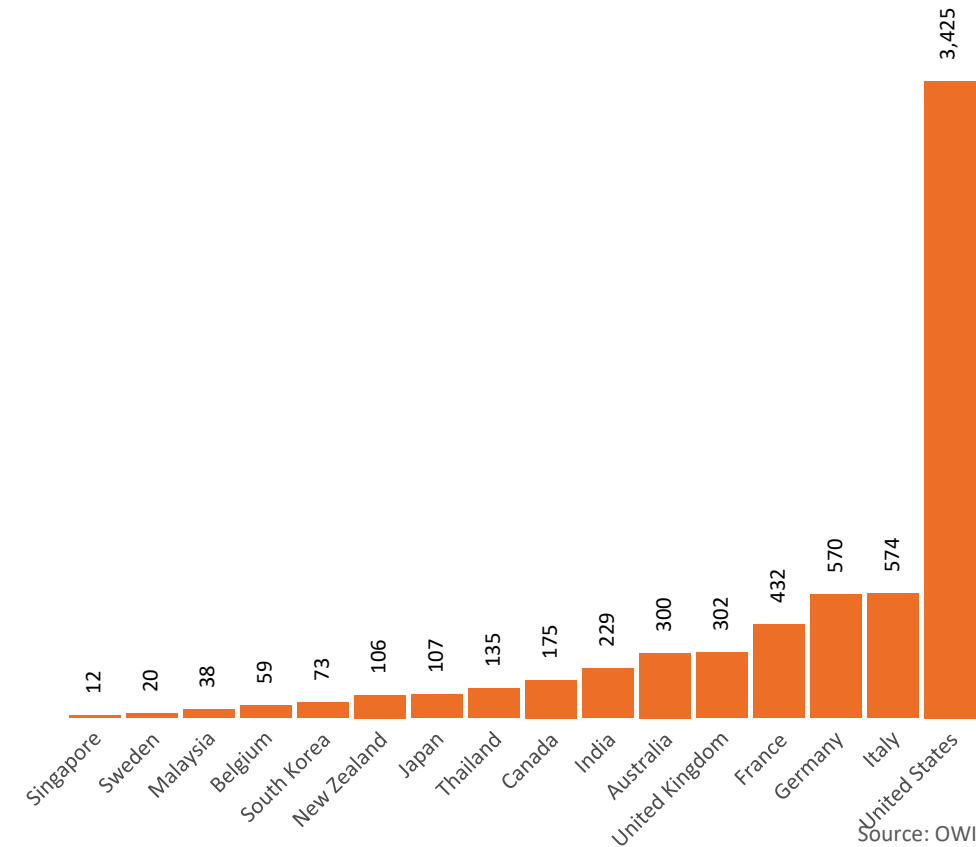
Australia's COVID-19
Vaccine Roadmap

New daily cases per million since 2021, Australia and G7 countries
Smoothed - 7 day average



Source: OWID
Data downloaded: 11 Jul 2022 09:21
Latest data: 09 Jul 2022

COVID-19 deaths in past 7 days - Australia and select countries



Source: OWID
Data downloaded: 11 Jul 2022 09:21
Latest data: 09 Jul 2022