



**Australian Government**  
**Operation COVID Shield**

# COVID-19 Vaccine Roll-out

10 July 2022

Data as at:  
09 Jul 2022

## Total vaccine doses



**60,601,925** total vaccine  
doses administered nationally as at 09 July  
**+20,750** recorded in the last 24 hours



**20,125,373**

people have had at least one  
dose

**>95%**

of people over the age of 16  
have had at least one dose



**19,787,892**

people are fully vaccinated

**>95%**

of people over the age of 16 are  
fully vaccinated



**13,940,349**

people over the age of 16  
who have received three or  
more doses

**NSW**  
**18,807,107**  
(+5,815 daily  
increase)

**VIC**  
**15,879,885**  
(+5,400 daily  
increase)

**QLD**  
**11,469,119**  
(+3,918 daily  
increase)

**WA**  
**6,657,217**  
(+2,306 daily  
increase)

**TAS**  
**1,377,214**  
(+702 daily  
increase)

**SA**  
**4,223,124**  
(+1,806 daily  
increase)

**ACT**  
**1,591,004**  
(+737 daily  
increase)

**NT**  
**597,255**  
(+66 daily  
increase)

\*Administration state breakdown indicates state in which a vaccine was administered

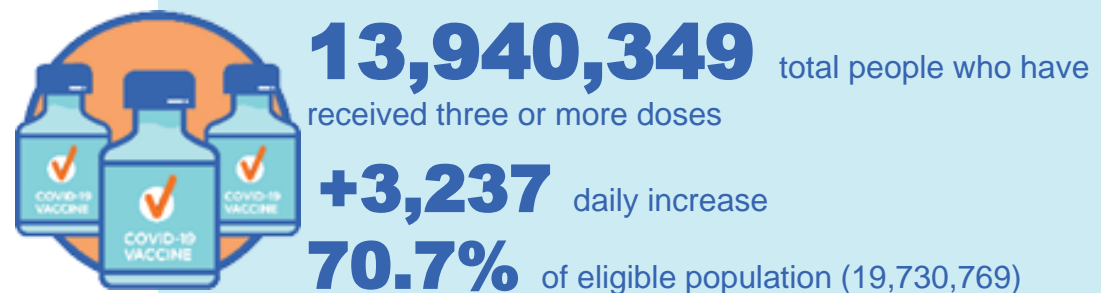
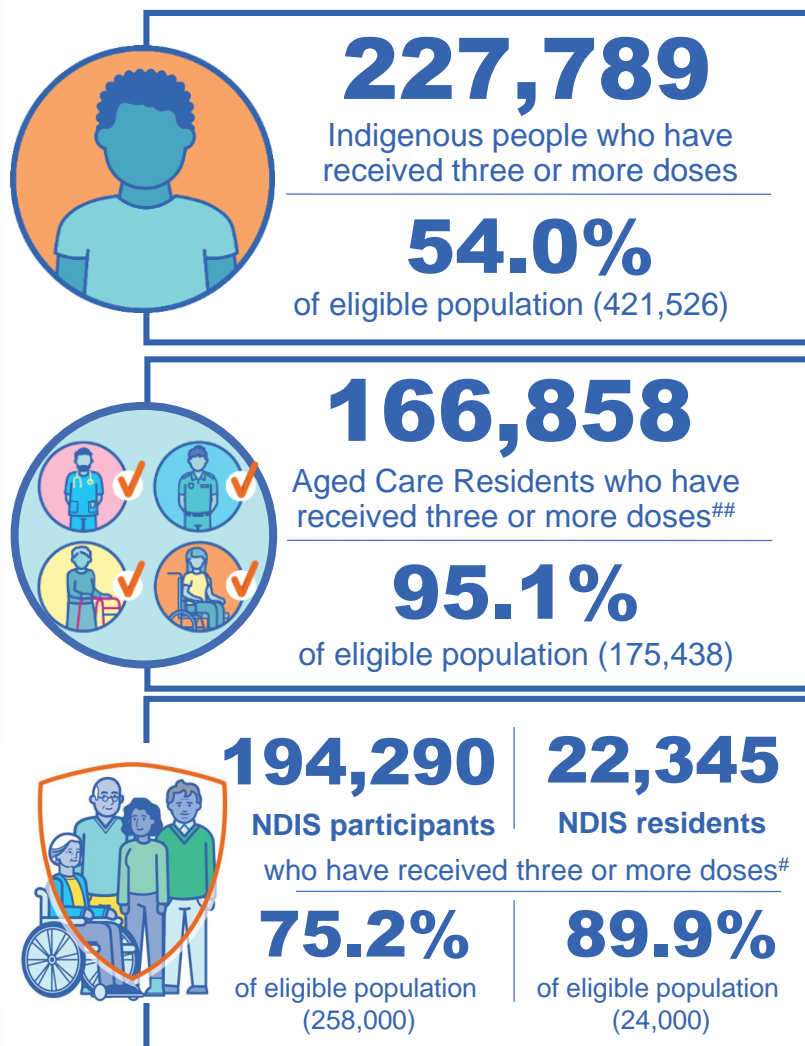
\*\*Overall dose count includes instances of more than three doses per person in a small number of cases.

Source: Australian Immunisation Register

# Booster Vaccinations

Australia's COVID-19  
Vaccine Roadmap

Data as at:  
09 Jul 2022



	Number of People	Daily Increase	% of Eligible
NSW	4,256,844	1,069	68.3%
VIC	3,714,099	768	73.0%
QLD	2,417,812	631	63.6%
WA	1,706,962	265	82.8%
SA	999,610	419	74.3%
TAS	318,987	50	73.2%
ACT	275,027	65	79.2%
NT	131,727	16	78.2%

\*People may belong to multiple groups and could be represented in the above breakdowns multiple times.  
# NDIS participants data as at 06 July 2022. ## Aged Care Residents data as at 08 July 2022.

Source: Australian Immunisation Register

**119,281** doses administered to persons residing in other territories or with missing residential information

# Fourth Doses

Data as at:  
09 Jul 2022

Australia's COVID-19  
Vaccine Roadmap



**2,565,294** total people (16+) who have received four or more doses

**+15,213** daily increase



**2,231,145**

People aged 65+ who have received  
four or more doses

**61.2%**

of eligible population (3,645,158)



**94,331**

Aged Care Residents who have  
received four or more doses<sup>#</sup>

**67.8%**

of eligible population (139,213)

	Number of People 16+	Daily Increase
ACT	48,931	445
NSW	829,580	4,122
NT	11,046	29
QLD	495,971	2,949
SA	208,819	1,168
TAS	72,405	585
VIC	631,278	4,084
WA	254,680	1,769

**12,584** doses administered to persons  
residing in other territories or with  
missing residential information

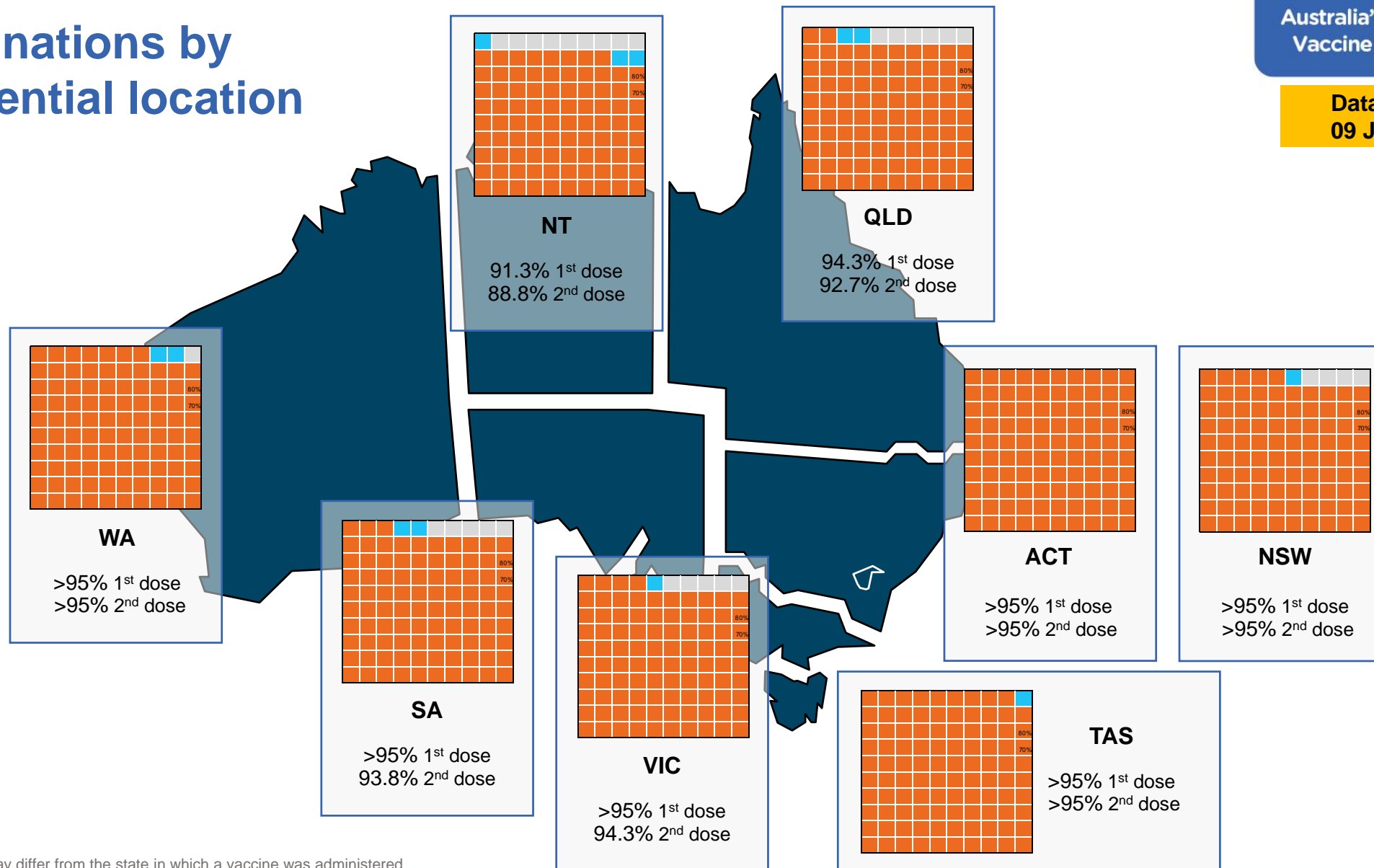
\*People become eligible for a fourth dose four months after their third dose. Individuals may belong to multiple groups and could be represented in the above multiple times.  
<sup>#</sup>Aged Care Residents data as at 07 July 2022.

Source: Australian Immunisation Register

# Vaccinations by residential location

Australia's COVID-19  
Vaccine Roadmap

Data as at:  
09 Jul 2022



\*Residential state may differ from the state in which a vaccine was administered

# Commonwealth and Jurisdiction vaccine doses administered

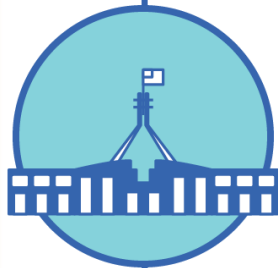
Data as at:  
09 Jul 2022



**60,601,925** total vaccine  
doses administered nationally as at 09 July  
**+ 20,750** recorded in the last 24 hours



**21,330,616**  
doses administered by state  
and territory facilities  
**+ 2,631**  
recorded in the last 24 hours



**39,271,309**  
doses administered by  
commonwealth facilities  
**+ 18,119**  
recorded in the last 24 hours

**37,951,123** total vaccine doses  
administered in primary care settings  
**1,320,186** total vaccine doses  
administered in aged care and disability  
settings

NSW	Jurisdictions	Commonwealth
Cumulative	5,147,715	13,659,392
Daily increase	190	5,625

VIC	Jurisdictions	Commonwealth
Cumulative	6,138,321	9,741,564
Daily increase	659	4,741

QLD	Jurisdictions	Commonwealth
Cumulative	3,864,591	7,604,528
Daily increase	155	3,763

WA	Jurisdictions	Commonwealth
Cumulative	2,537,913	4,119,304
Daily increase	636	1,670

TAS	Jurisdictions	Commonwealth
Cumulative	630,710	746,504
Daily increase	377	325

SA	Jurisdictions	Commonwealth
Cumulative	1,851,321	2,371,803
Daily increase	436	1,370

ACT	Jurisdictions	Commonwealth
Cumulative	812,513	778,491
Daily increase	176	561

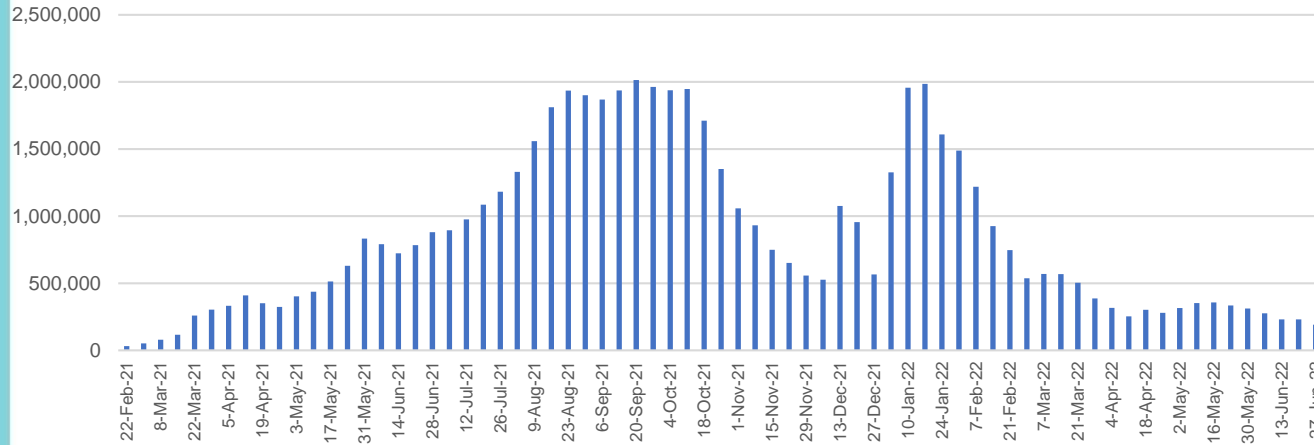
NT	Jurisdictions	Commonwealth
Cumulative	347,532	249,723
Daily increase	<10	64

# Vaccine milestone charts

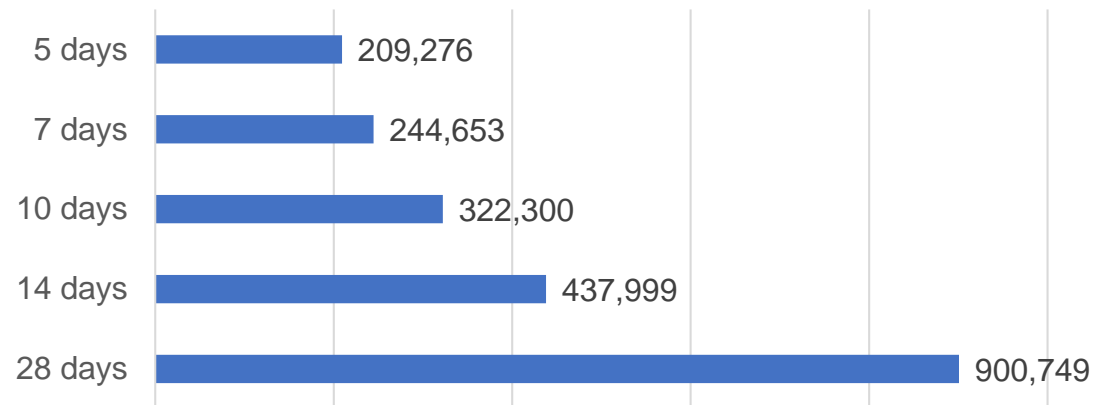
Data as at:  
09 Jul 2022

Australia's COVID-19  
Vaccine Roadmap

### Doses Administered by Week



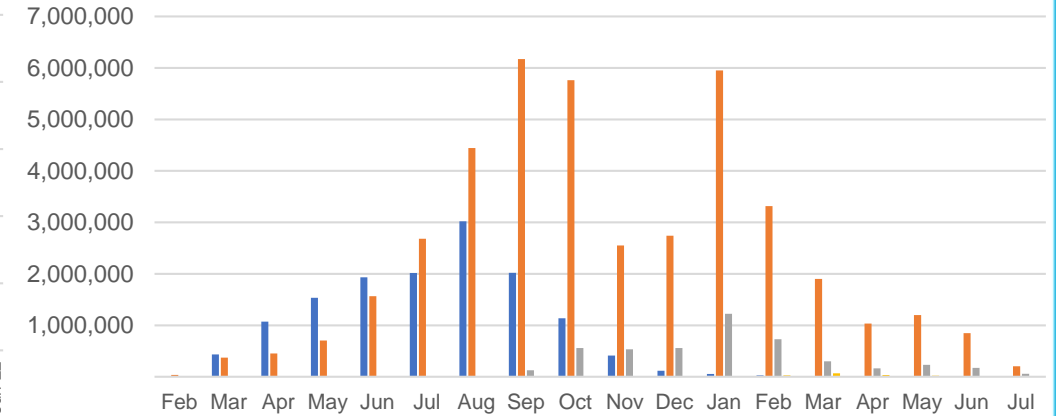
### Doses Reported



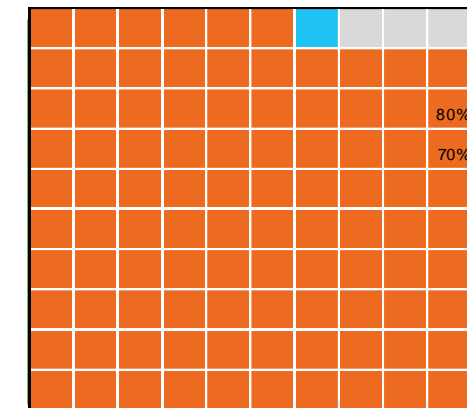
\*Sourced from the Australian Immunisation Register.

### Doses by administration month and vaccine type

AZ - Vaxzevria Pfizer Moderna Novavax



### Eligible population percentage coverage



1st dose: > 95.0% 2nd dose: > 95.0%

\*Each square represents 1% of the national population. Squares are filled as milestones are achieved.

# Doses by age and sex

First and second doses by age and sex

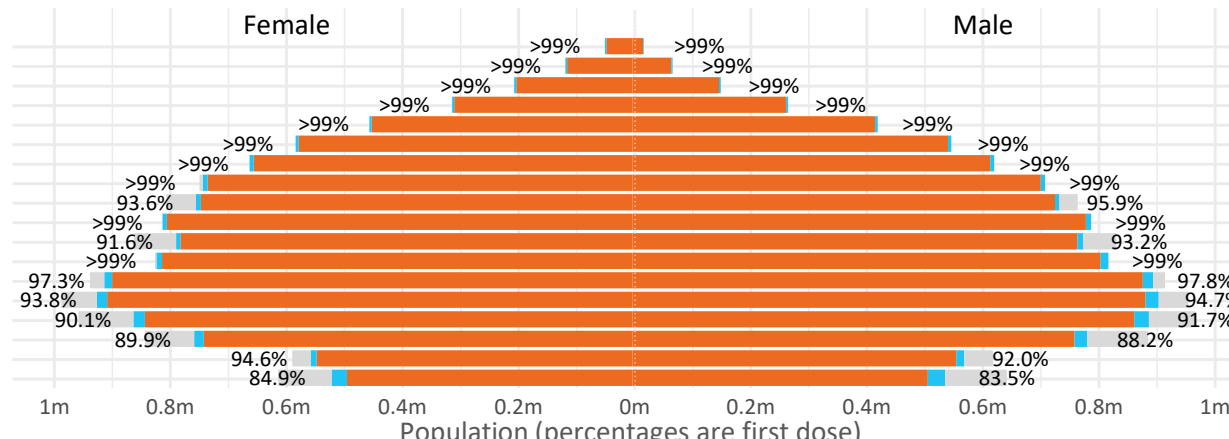
Australia's COVID-19  
Vaccine Roadmap

Data as at:  
09 Jul 2022

Age	Dose 1	Dose 2
95+	66,380 (>99%)	62,917 (>99%)
90-94	183,202 (>99%)	177,697 (>99%)
85-89	352,860 (>99%)	346,132 (>99%)
80-84	573,949 (>99%)	566,812 (>99%)
75-79	868,330 (>99%)	859,825 (>99%)
70-74	1,120,282 (>99%)	1,108,836 (>99%)
65-69	1,272,947 (>99%)	1,257,965 (>99%)
60-64	1,439,849 (>99%)	1,423,240 (>99%)
55-59	1,475,542 (94.9%)	1,458,793 (93.8%)
50-54	1,586,691 (>99%)	1,569,717 (>99%)
45-49	1,550,418 (92.5%)	1,532,039 (91.4%)
40-44	1,627,801 (>99%)	1,603,786 (99.0%)
35-39	1,795,198 (97.8%)	1,762,950 (96.1%)
30-34	1,820,611 (94.6%)	1,778,518 (92.5%)
25-29	1,743,890 (91.5%)	1,695,844 (88.9%)
20-24	1,531,074 (89.4%)	1,490,556 (87.0%)
16-19	1,116,349 (93.4%)	1,092,265 (91.3%)
12-15	1,047,838 (84.2%)	991,601 (79.7%)

	16+	50+	12-15	5-11
Dose 1	97.60% (20,125,373 doses / 20,619,959 people)	>99% (8,940,032 doses / 8,749,703 people)	84.23% (1,047,838 doses / 1,243,990 people)	52.29% (1,190,389 doses / 2,276,638 people)
Dose 2	95.96% (19,787,892 doses / 20,619,959 people)	>99% (8,831,934 doses / 8,749,703 people)	79.71% (991,601 doses / 1,243,990 people)	39.97% (910,063 doses / 2,276,638 people)

Dose 1 Dose 2 Population



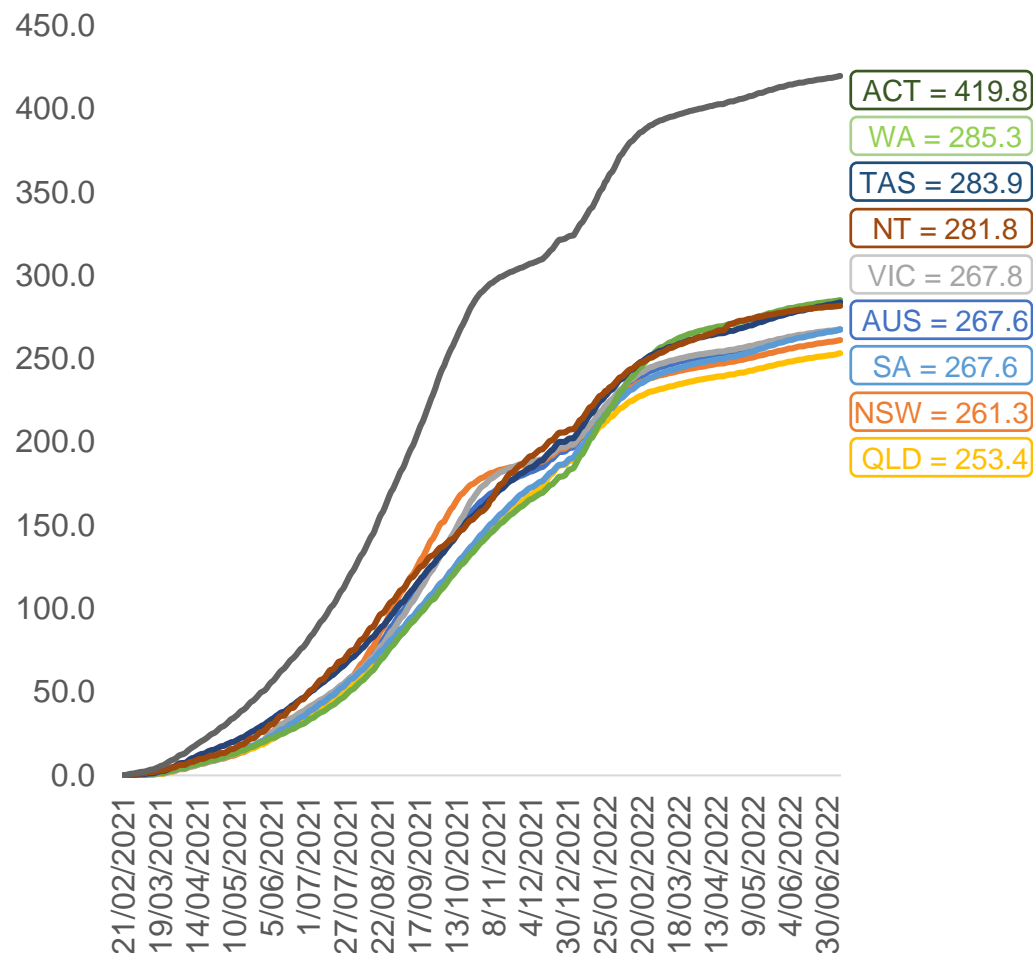
	AUS	ACT	NSW	NT	QLD	SA	TAS	VIC	WA
16 and over - dose 1	20,125,373	353,754	6,347,252	173,970	3,878,043	1,380,445	446,327	5,179,124	2,102,288
16 and over - dose 2	19,787,892	347,990	6,248,549	169,299	3,814,240	1,351,130	437,332	5,100,199	2,071,224
16 and over - population	20,619,959*	344,037	6,565,651	190,571	4,112,707	1,440,400	440,172	5,407,574	2,114,978
16 and over % with dose 1	97.60%	>99%	96.67%	91.29%	94.29%	95.84%	>99%	95.78%	>99%
16 and over % with dose 2	95.96%	>99%	95.17%	88.84%	92.74%	93.80%	>99%	94.32%	97.93%
5 to 11 - dose 1	1,190,389	31,718	355,734	13,118	206,221	83,514	28,406	324,294	139,926
5 to 11 - dose 2	910,063	27,515	278,518	8,826	151,566	64,132	23,259	248,549	103,106
5 to 11 - population	2,276,638	39,789	716,460	24,750	478,731	148,816	45,033	578,499	244,154
5 to 11 % with dose 1	52.29%	79.72%	49.65%	53.00%	43.08%	56.12%	63.08%	56.06%	57.31%
5 to 11 % with dose 2	39.97%	69.15%	38.87%	35.66%	31.66%	43.09%	51.65%	42.96%	42.23%
12 to 15 - dose 1	1,047,838	20,116	322,309	10,730	205,334	68,153	22,798	273,788	115,406
12 to 15 - dose 2	991,601	19,557	307,878	9,666	191,732	64,372	21,687	261,927	106,805
12 to 15 - population	1,243,990	19,693	390,330	13,060	270,146	82,747	26,308	308,611	132,869
12 to 15 % with dose 1	84.23%	>99%	82.57%	82.16%	76.01%	82.36%	86.66%	88.72%	86.86%
12 to 15 % with dose 2	79.71%	>99%	78.88%	74.01%	70.97%	77.79%	82.44%	84.87%	80.38%

\*National population will not equal sum of listed jurisdictions due to a small number of people counted in national population residing in some 'other' territories. Sum of state doses will not add to national total as some records are unable to be geocoded to a State or Territory.  
Doses sourced from Australian Immunisation Register, population from ABS ERP June 2020



# Vaccinations by location

Cumulative total doses administered vs eligible state populations\*

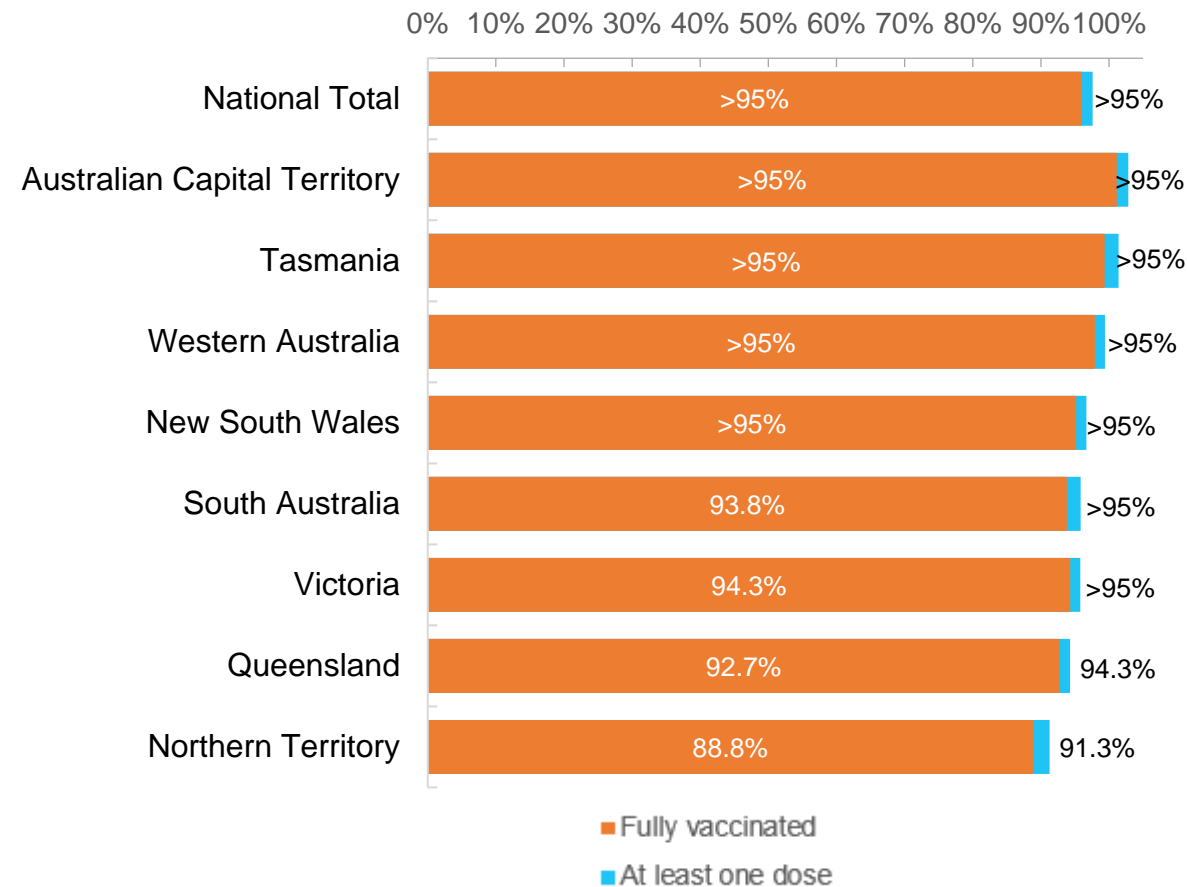


\*Not an indication of percentage vaccinated, numbers will exceed 100 due to multiple doses required per person of the population. All doses are included for those aged 12 and above, and are based on vaccination provider location.

Data as at:  
09 Jul 2022

Australia's COVID-19  
Vaccine Roadmap

First and Second Doses by residential location



# Aboriginal and Torres Strait Islander peoples

## Number of people vaccinated

Data as at:  
05 Jul 2022  
Updated weekly

Australia's COVID-19  
Vaccine Roadmap



**443,710**

people over the age of 16  
have had at least one dose

**85.0%**

of people over the age of 16  
have had at least one dose



**425,479**

people over the age of 16  
are fully vaccinated

**81.5%**

of people over the age of 16 are  
fully vaccinated



People aged 12 – 15 years

**47,820**

**41,926**

**67.7%**

**59.4%**

At least one dose

Fully vaccinated

### 178 Aboriginal community controlled health services (ACCHS)

0#

50

27

44

12

3

21

21

**ACT**

**NSW**

**NT**

**QLD**

**SA**

**TAS**

**VIC**

**WA**

Medicare Address State <sup>##</sup>	Individuals Dose 1	Individuals Dose 1 %	Individuals Dose 2	Individuals Dose 2 %
Australian Capital Territory	4,800	91.8%	4,680	89.5%
New South Wales	136,008	87.3%	132,965	85.4%
Northern Territory	41,498	89.7%	39,543	85.5%
Queensland	116,679	81.8%	111,358	78.1%
South Australia	20,088	80.6%	18,726	75.1%
Tasmania	13,900	88.9%	13,499	86.3%
Victoria	35,711	90.4%	34,923	88.4%
Western Australia	53,593	86.8%	49,992	81.0%
Unknown/Other Territories	21,433	70.4%	19,793	65.1%
<b>Totals</b>	<b>443,710</b>	<b>85.0%</b>	<b>425,479</b>	<b>81.5%</b>

Source: Australian Immunisation Register

\*Identifying as Aboriginal and Torres Strait Islander is optional and the estimated population may be under reported.

\*\*Includes all Aboriginal and Torres Strait Islander peoples who have received a vaccination, not limited to those administered in an ACCHS setting

##ACCHS in the ACT are currently operating as a Commonwealth Vaccine Clinics so not included to avoid double counting

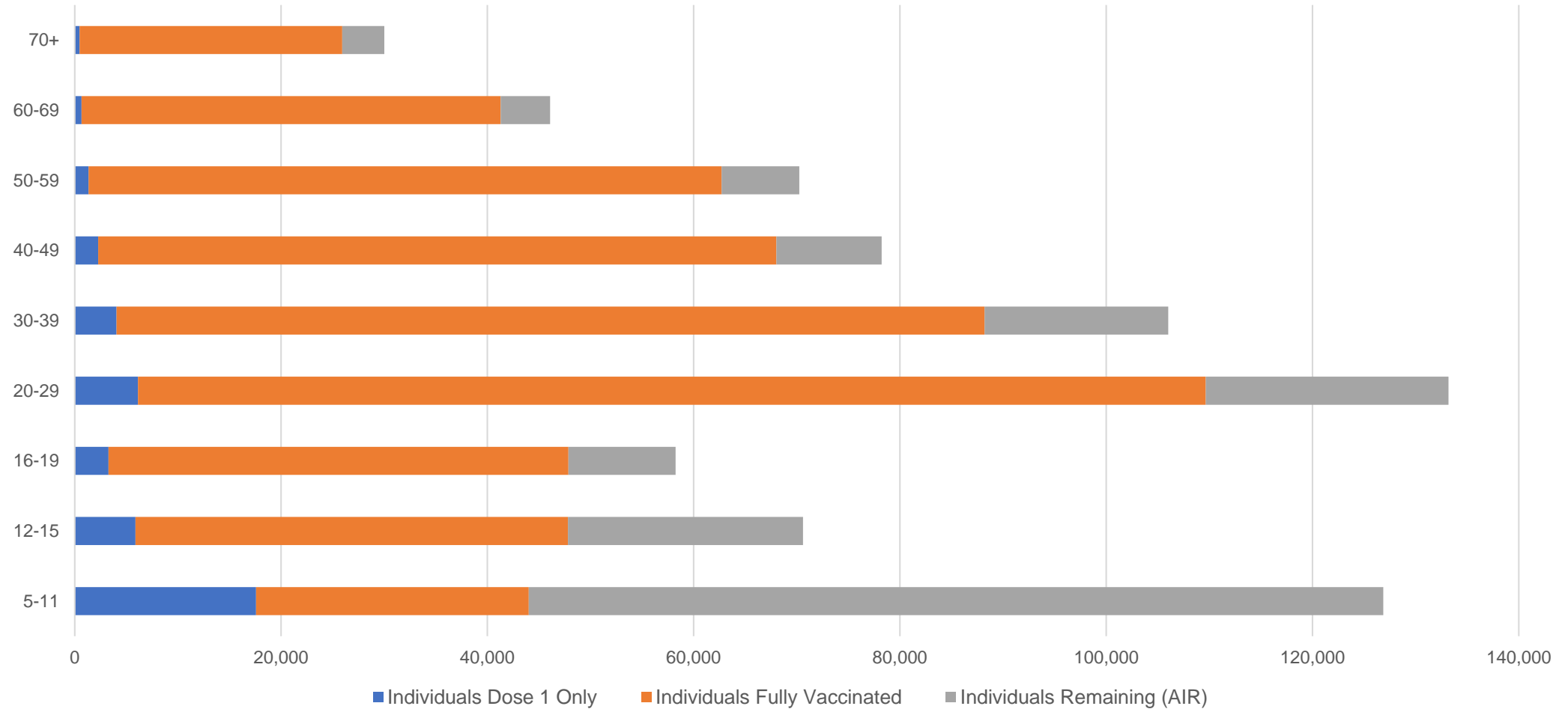
##The above table includes all identified Aboriginal and Torres Strait Islander people who are aged 16 and above by their state of residence.

# Aboriginal and Torres Strait Islander peoples

## Number of people vaccinated by age

Data as at:  
05 Jul 2022  
Updated weekly

Australia's COVID-19  
Vaccine Roadmap



Source: Australian Immunisation Register

# Commonwealth primary care

Data as at:  
09 Jul 2022

Australia's COVID-19  
Vaccine Roadmap



## Primary care vaccine administration sites

<b>5,697</b>	<b>127</b>	<b>178</b>	<b>3,613</b>
GPs	CVCs	ACCHS	Pharmacies



**37,951,123** total vaccine doses administered  
primary care settings as at 09 July  
**+ 18,101** recorded in the last 24 hours

## Primary care vaccinations by provider type

	Doses administered	Daily increase	7 day increase
General Practice* includes other Commonwealth	30,269,089	8,992	130,488
Pharmacy	7,682,034	9,109	90,737

**NSW**  
**13,085,745**  
(+5,894 daily increase)

**VIC**  
**9,409,008**  
(+4,655 daily increase)

**QLD**  
**7,320,104**  
(+3,716 daily increase)

**WA**  
**3,978,753**  
(+1,664 daily increase)

**TAS**  
**725,568**  
(+297 daily increase)

**SA**  
**2,290,578**  
(+1,396 daily increase)

**ACT**  
**600,946**  
(+525 daily increase)

**NT**  
**223,602**  
(+60 daily increase)

**316,819**

doses administered to persons  
residing in other territories or with  
missing residential information

\*General practice includes Commonwealth Vaccination Clinics, Aboriginal Community Health Centres, Royal Flying Doctor Service and other Commonwealth vaccination facilities

Source: Australian Immunisation Register

Data as at:  
09 Jul 2022

# Commonwealth aged care and disability doses administered



**1,320,186** (+ 18 last 24 hours)

Total vaccine doses administered in aged care and disability facilities as at 09 July

Number of doses administered as part of the Commonwealth aged and disability care rollout

**NSW**  
**572,883**  
(**<10** daily increase)

**VIC**  
**247,995**  
(**<10** daily increase)

**QLD**  
**210,476**  
(**<10** daily increase)

**WA**  
**112,770**  
(**<10** daily increase)

**TAS**  
**23,770**  
(**<10** daily increase)

**SA**  
**86,479**  
(**<10** daily increase)

**ACT**  
**17,949**  
(**<10** daily increase)

**NT**  
**7,705**  
(**<10** daily increase)

**40,159**

doses administered to persons  
residing in other territories or with  
missing residential information

\*Sourced from the Australian Immunisation Register. Includes all persons vaccinated at participating residential aged care, disability and related industry settings.

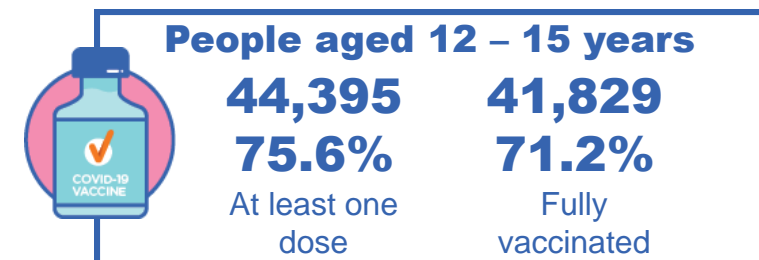
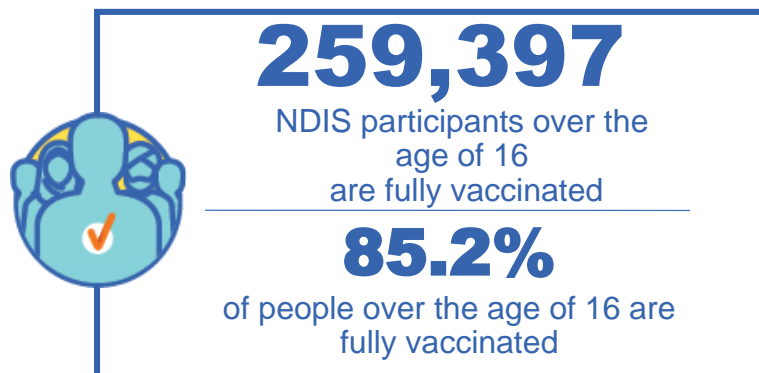
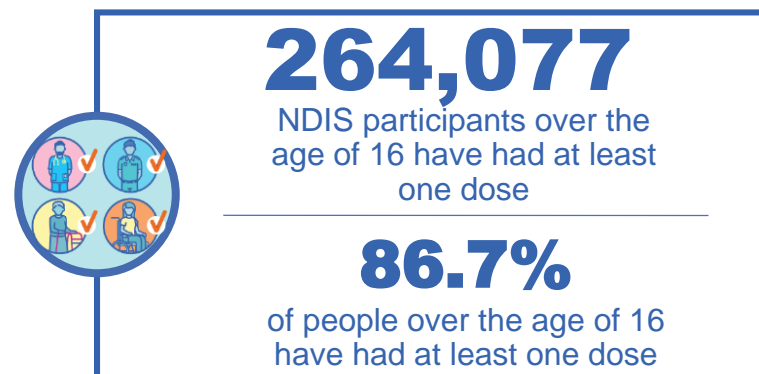
\*\*State level breakdown indicates the residential location and may not align to the state in which the vaccination occurred.

Source: Australian Immunisation Register

# National Disability Insurance Scheme (NDIS) reported vaccinations

Data as at:  
07 July 2022  
Updated weekly

Australia's COVID-19  
Vaccine Roadmap



## NDIS participant vaccinations

	People aged 16+ with at least one dose	People aged 16+ fully vaccinated	% People aged 16+ with at least one dose	% People aged 16+ fully vaccinated
ACT	4,967	4,905	88.9%	87.8%
NSW	80,766	79,502	87.3%	85.9%
NT	2,295	2,225	77.6%	75.2%
QLD	52,453	51,465	84.9%	83.3%
SA	21,630	21,133	84.4%	82.4%
TAS	6,600	6,449	87.0%	85.0%
VIC	70,118	68,967	87.9%	86.4%
WA	25,248	24,751	88.0%	86.3%
National	264,077	259,397	86.7%	85.2%

Source: Linkage between National Disability Insurance Agency data and the Australian Immunisation Register. Total NDIS participant numbers as at 30 June. Australian Immunisation Register data as at 06 July. Includes all participants regardless of residence type.

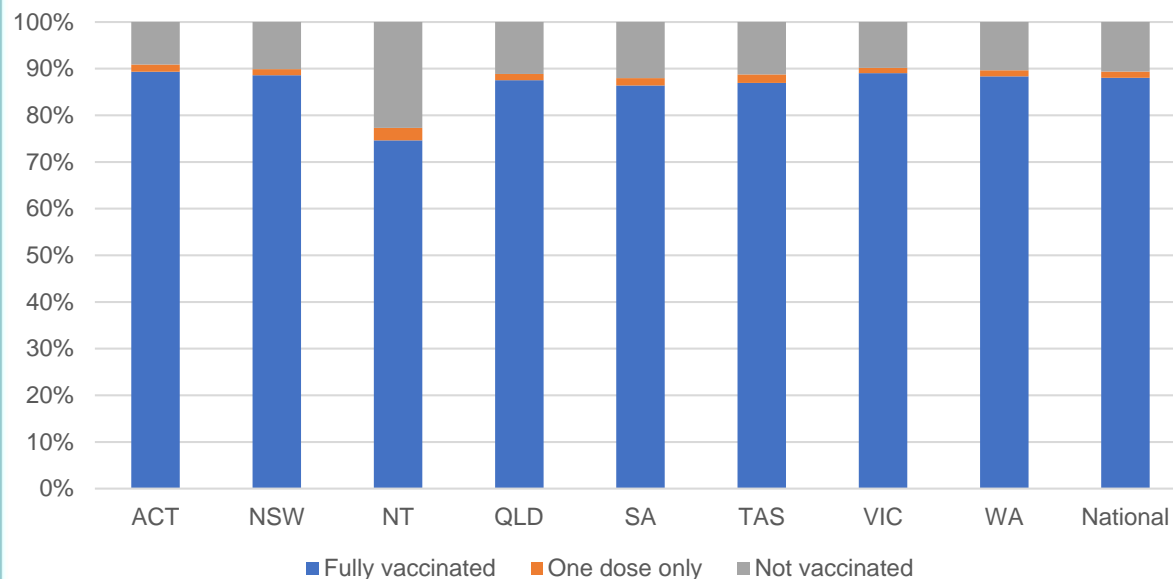
# National Disability Insurance Scheme (NDIS) reported vaccinations

Data as at:  
07 July 2022  
Updated weekly

Australia's COVID-19  
Vaccine Roadmap

NATIONAL	Total people with at least one dose	People fully vaccinated	Total number of individuals in cohort	% People with at least one dose	% People fully vaccinated
NDIS participants living in disability accommodation	21,321	21,001	23,858	89.4%	88.0%

## NDIS participants in disability and aged care accommodation



Source: Linkage between National Disability Insurance Agency data and the Australian Immunisation Register. Includes participants residing in disability accommodation only.

Source: Total NDIS participant numbers as at 30 June. Participant data as at 06 July. Australian Immunisation Register data as at 06 July. Worker data as at 06 July.

## NDIS workforce vaccinations

	NDIS workers with at least one dose	NDIS workers fully vaccinated	% NDIS workers with at least one dose	% NDIS workers fully vaccinated
NSW	128,323	123,394	98.3%	94.5%
VIC	117,599	114,365	98.4%	95.7%
QLD	71,472	70,626	97.9%	96.7%
WA	34,485	33,092	99.0%	95.0%
SA	35,267	33,506	98.6%	93.6%
TAS	12,424	12,017	98.8%	95.6%
ACT	12,340	12,313	99.8%	99.6%
NT	3,966	3,818	99.6%	95.9%
<b>TOTAL</b>	<b>415,876</b>	<b>403,131</b>	<b>98.4%</b>	<b>95.4%</b>

Source: the NDIS Commission has established a requirement for registered NDIS providers who provide intensive disability support services to report on the vaccination status of workers they employ, or otherwise engage, to deliver NDIS-funded supports and services, and who are required to be vaccinated in accordance with in-force state and territory public health orders. The statistics reflect data reported to the NDIS Commission by registered NDIS providers and should be considered indicative and subject to change

Note: Some registered NDIS providers are yet to report on the vaccination status of their workforce. The NDIS Commission is working with those providers around reporting requirements.

Remaining workers not included include those exempt from vaccination requirements, workers whose vaccination status is not yet verified by the provider (such as workers on leave) and provider reporting anomalies.



# Residential aged care vaccination rollout

Residential aged care facilities status

**175,438**

People fully vaccinated

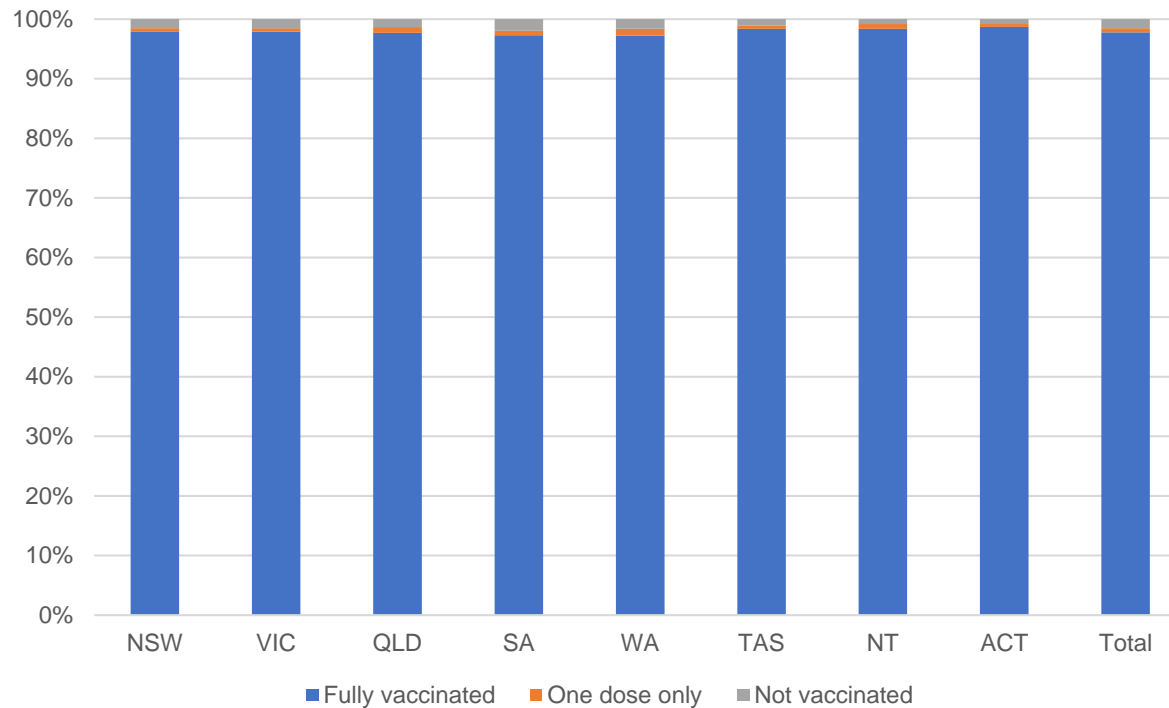
**176,706**

People with at least one dose

Australia's COVID-19 Vaccine Roadmap

Data as at:  
07 July 2022  
Updated weekly

## Aged care resident vaccinations



## Aged care worker vaccinations

Jurisdictions	Total workers with at least one dose	Workers fully vaccinated	% Workers with at least one dose	% Workers fully vaccinated
NSW	77,266	77,142	99.9%	99.7%
VIC	70,674	70,673	100.0%	100.0%
QLD	48,579	48,565	100.0%	100.0%
SA	26,594	26,585	100.0%	100.0%
WA	24,718	24,716	100.0%	100.0%
TAS	7,536	7,536	100.0%	100.0%
NT	904	904	100.0%	100.0%
ACT	2,954	2,954	100.0%	100.0%
Total	259,225	259,075	100.0%	99.9%

Source: Residential aged care provider self-reported COVID-19 vaccination information

\*Status updates are provided by facilities at least once per week. Reporting is updated Monday to Friday to encompass different facility updates being made on different days.

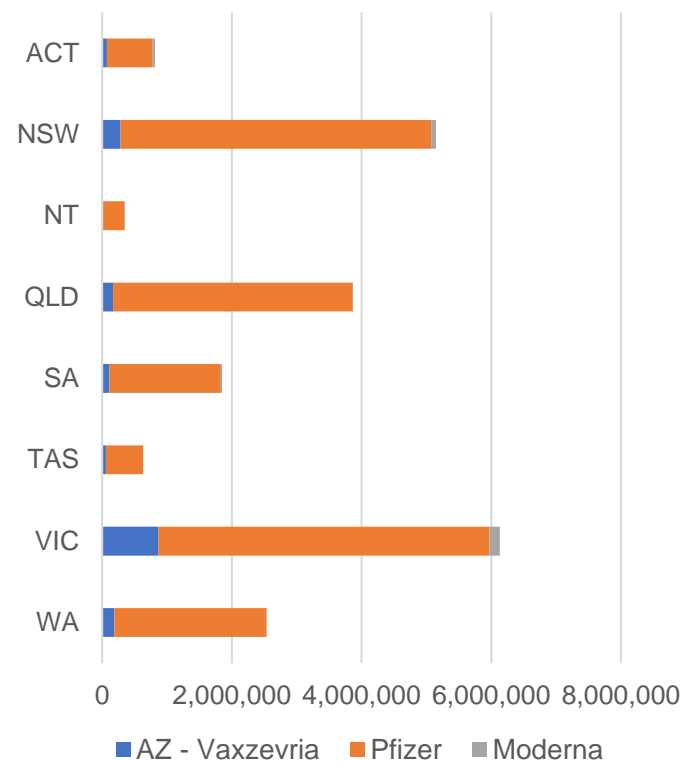
Data is sourced directly from Aged Care Service Providers and is not drawn or closely aligned with data from AIR due to inconsistencies and potential lags in uploading of records.



Data as at:  
09 Jul 2022

## Jurisdiction administered

Total vaccine doses administered in State and Territory clinics as at 09 July



**21,330,616** total vaccine doses administered  
in State and Territory clinics as at 09 July  
+ **2,631** recorded in the last 24 hours  
+ **21,292** recorded in the last 7 days

**NSW**  
**5,147,715**  
(+190 daily  
increase)

**VIC**  
**6,138,321**  
(+659 daily  
increase)

**QLD**  
**3,864,591**  
(+155 daily  
increase)

**WA**  
**2,537,913**  
(+636 daily  
increase)

**TAS**  
**630,710**  
(+377 daily  
increase)

**SA**  
**1,851,321**  
(+436 daily  
increase)

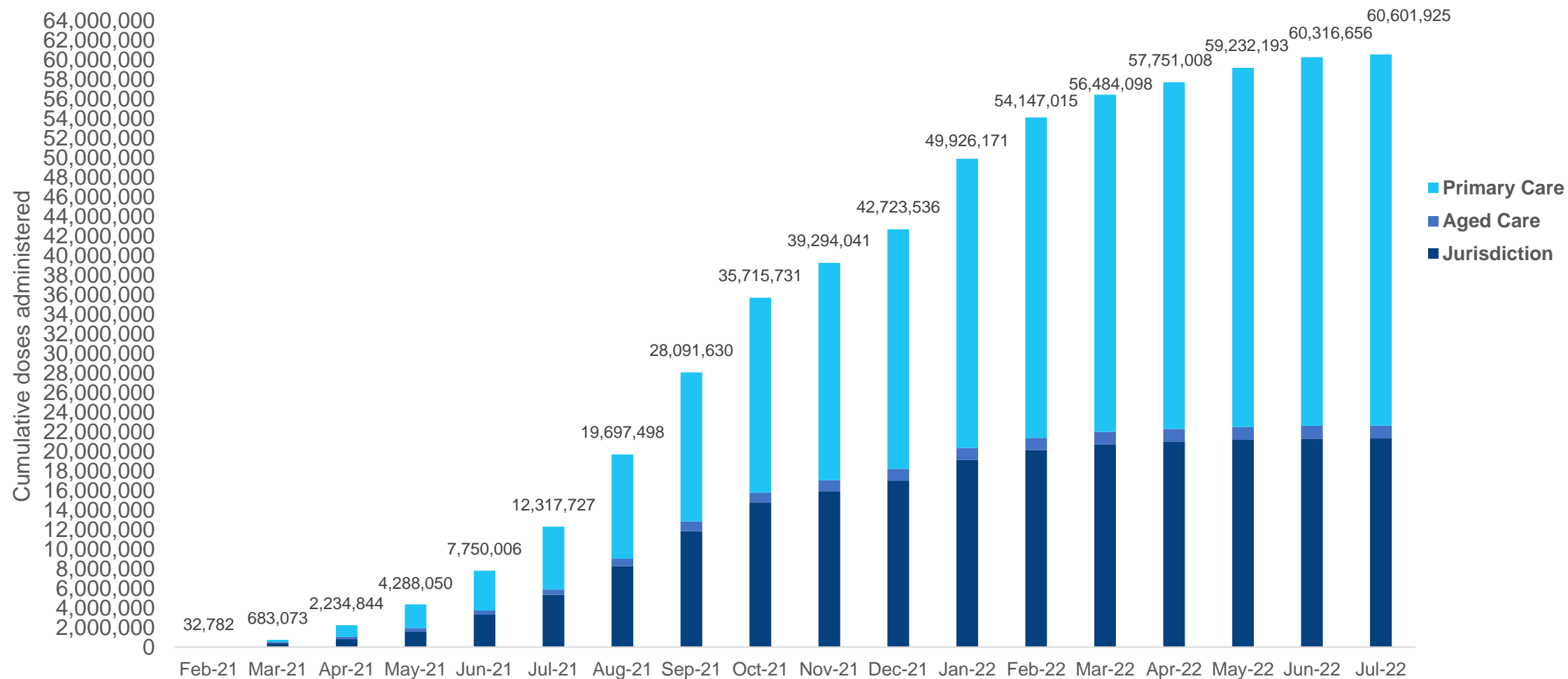
**ACT**  
**812,513**  
(+176 daily  
increase)

**NT**  
**347,532**  
(<10 daily  
increase)

\*Sourced from the Australian Immunisation Register. Numbers are calculated as difference in daily cumulative reported numbers to allow for historical corrections.

# Cumulative doses administered by channel

Data as at:  
09 Jul 2022

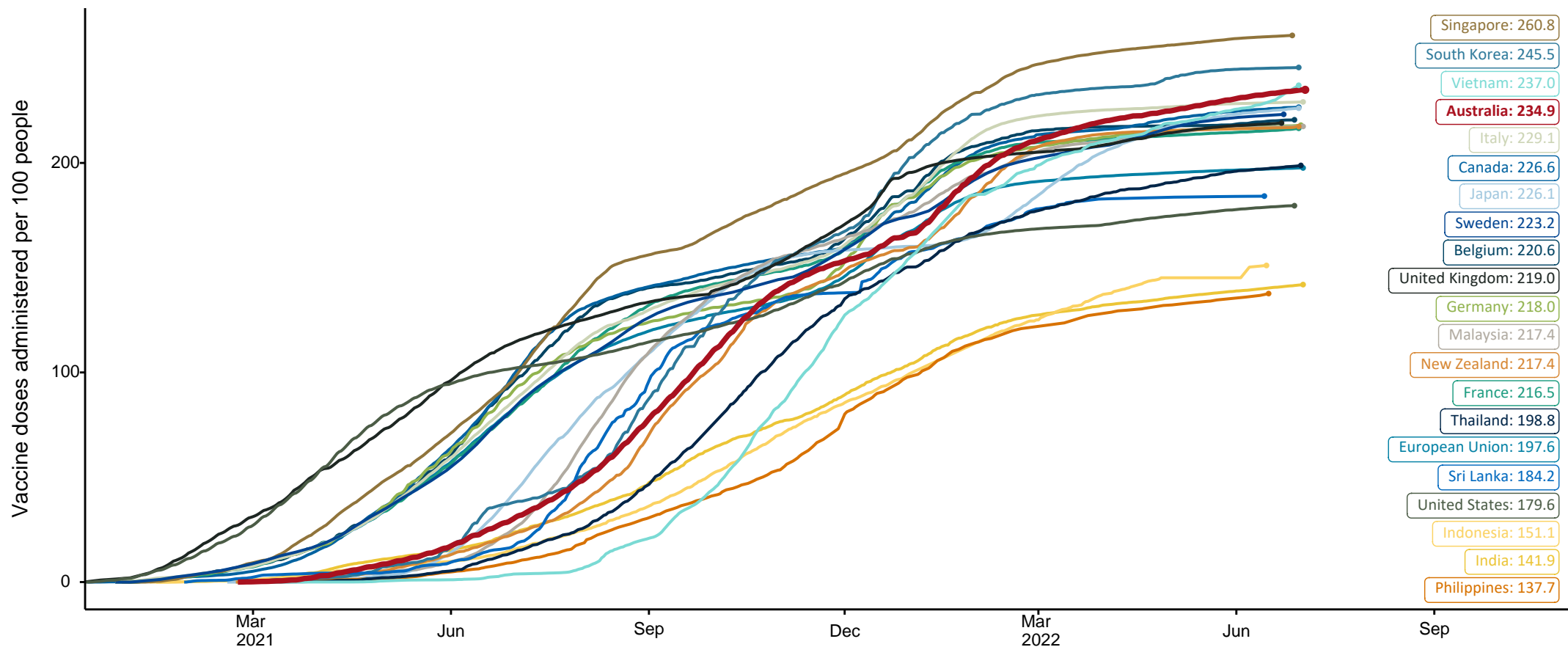


Source: Australian Immunisation Register

# COVID-19 vaccine doses per 100, Australia and select countries

Data as at:  
03 July 2022  
Updated weekly

Australia's COVID-19  
Vaccine Roadmap



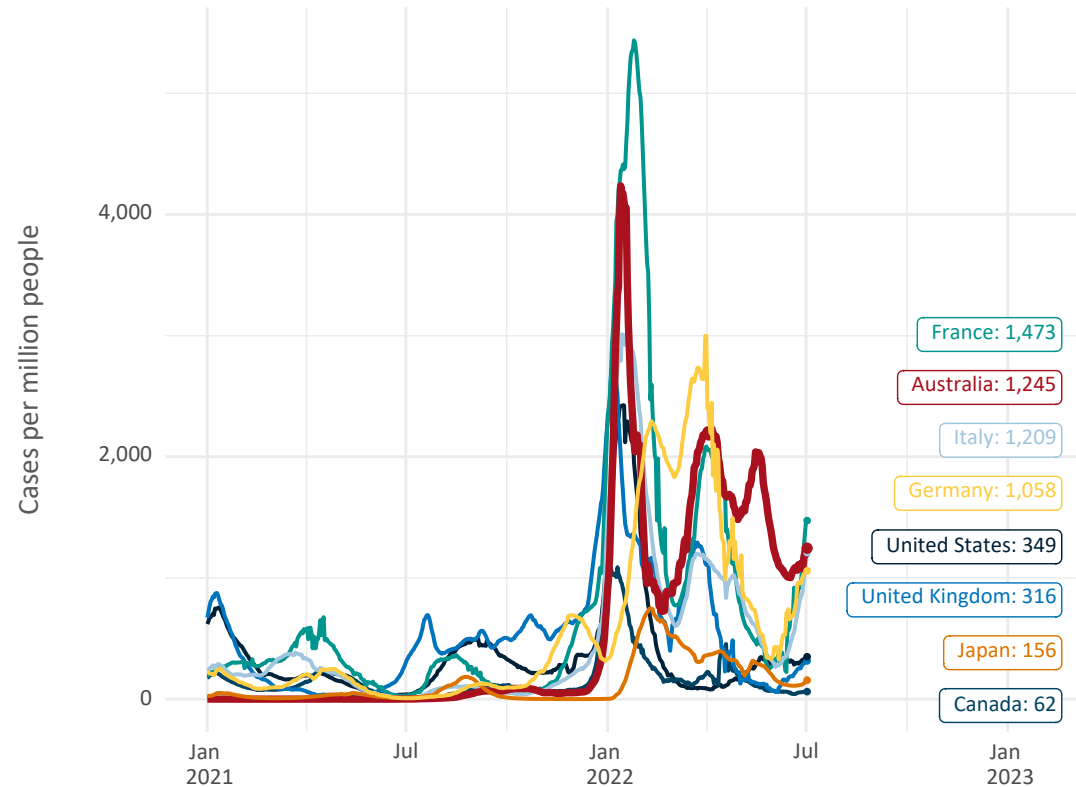
Note: From 11 January 2022, data for Australia includes all doses administered to people 5 and over. Prior to 11 January, data was for 12 and over.  
Source: Department of Health (Australia), Our World in Data (international)  
Latest data: 03 July

# International data – COVID-19

Data as at:  
03 July 2022  
Updated weekly

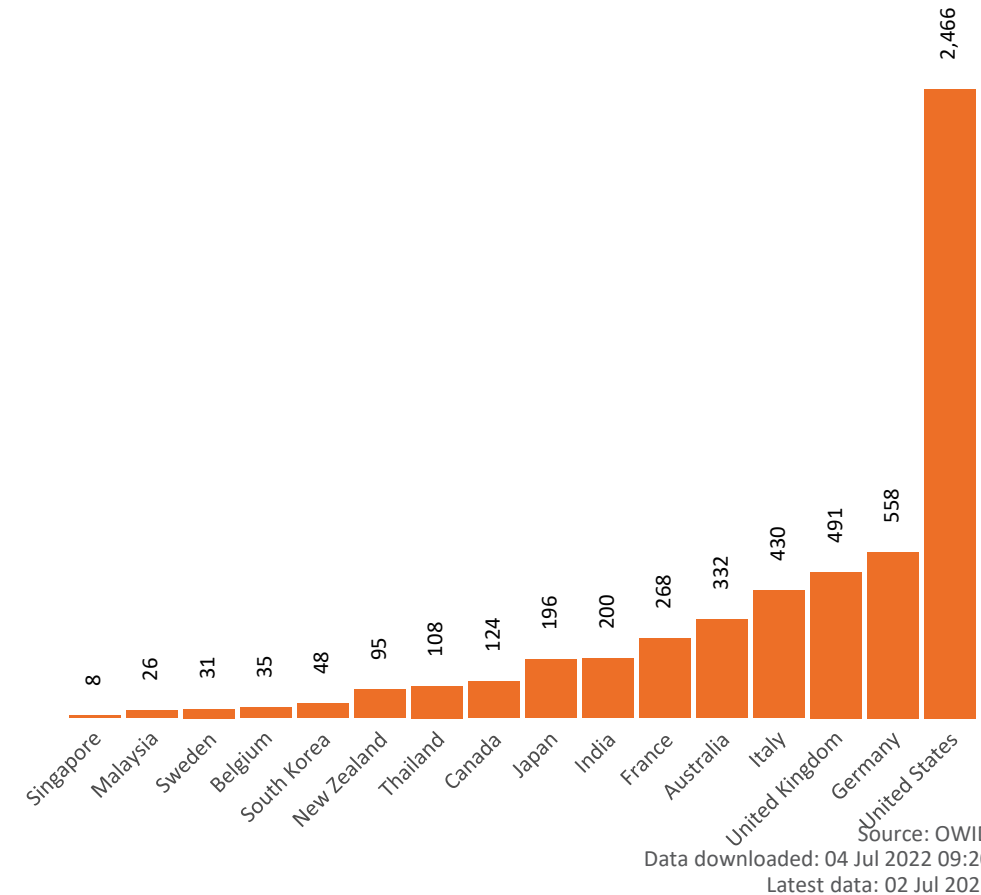
Australia's COVID-19  
Vaccine Roadmap

New daily cases per million since 2021, Australia and G7 countries  
Smoothed - 7 day average



Source: OWID  
Data downloaded: 04 Jul 2022 09:20  
Latest data: 02 Jul 2022

COVID-19 deaths in past 7 days - Australia and select countries



Source: OWID  
Data downloaded: 04 Jul 2022 09:20  
Latest data: 02 Jul 2022