



**Australian Government**  
**Operation COVID Shield**

# COVID-19 Vaccine Roll-out

01 July 2022

Data as at:  
30 Jun 2022

# Total vaccine doses



**60,316,656** total vaccine doses administered nationally as at 30 June

**+37,031** recorded in the last 24 hours



**20,112,812**

people have had at least one dose

**>95%**

of people over the age of 16 have had at least one dose



**19,776,200**

people are fully vaccinated

**>95%**

of people over the age of 16 are fully vaccinated



**13,890,417**

people over the age of 16 who have received three or more doses

**NSW**  
**18,715,187**  
(+11,493 daily increase)

**VIC**  
**15,817,874**  
(+8,437 daily increase)

**QLD**  
**11,405,343**  
(+8,039 daily increase)

**WA**  
**6,631,654**  
(+3,479 daily increase)

**TAS**  
**1,369,482**  
(+998 daily increase)

**SA**  
**4,200,102**  
(+3,198 daily increase)

**ACT**  
**1,581,172**  
(+1,165 daily increase)

**NT**  
**595,842**  
(+222 daily increase)

\*Administration state breakdown indicates state in which a vaccine was administered

\*\*Overall dose count includes instances of more than three doses per person in a small number of cases.

Source: Australian Immunisation Register

# Booster Vaccinations

Data as at:  
30 Jun 2022



**226,115**

Indigenous people who have received three or more doses

**53.9%**

of eligible population (419,734)



**167,306**

Aged Care Residents who have received three or more doses##

**94.8%**

of eligible population (176,439)



**193,439**

NDIS participants

who have received three or more doses#

**75.1%**

of eligible population (257,000)

**22,304**

NDIS residents

who have received three or more doses#

**89.8%**

of eligible population (24,000)



**13,890,417**

total people who have received three or more doses

**+6,797** daily increase

**70.5%** of eligible population (19,706,818)

|     | Number of People | Daily Increase | % of Eligible |
|-----|------------------|----------------|---------------|
| NSW | 4,239,419        | 2,077          | 68.1%         |
| VIC | 3,703,053        | 1,465          | 72.8%         |
| QLD | 2,406,978        | 1,388          | 63.4%         |
| WA  | 1,703,073        | 528            | 82.8%         |
| SA  | 994,716          | 840            | 74.1%         |
| TAS | 317,801          | 165            | 73.0%         |
| ACT | 274,212          | 104            | 79.0%         |
| NT  | 131,510          | 52             | 78.1%         |

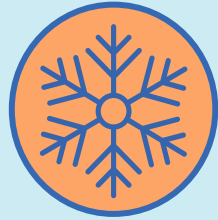
**119,655** doses administered to persons residing in other territories or with missing residential information

\*People may belong to multiple groups and could be represented in the above breakdowns multiple times.  
# NDIS participants data as at 29 June 2022. ## Aged Care Residents data as at 30 June 2022.

Source: Australian Immunisation Register

Data as at:  
30 Jun 2022

# Winter / Fourth Doses



**2,362,865** total people (16+) who have received four or more doses

**+26,257** daily increase



**2,083,759**

People aged 65+ who have received four or more doses

**58.8%**

of eligible population (3,541,566)



**89,200**

Aged Care Residents who have received four or more doses<sup>#</sup>

**65.1%**

of eligible population (137,085)

|     | Number of People 16+ | Daily Increase |
|-----|----------------------|----------------|
| ACT | 45,363               | 461            |
| NSW | 764,993              | 8,150          |
| NT  | 10,262               | 94             |
| QLD | 449,189              | 5,879          |
| SA  | 192,623              | 2,080          |
| TAS | 66,435               | 771            |
| VIC | 587,160              | 5,892          |
| WA  | 235,296              | 2,721          |

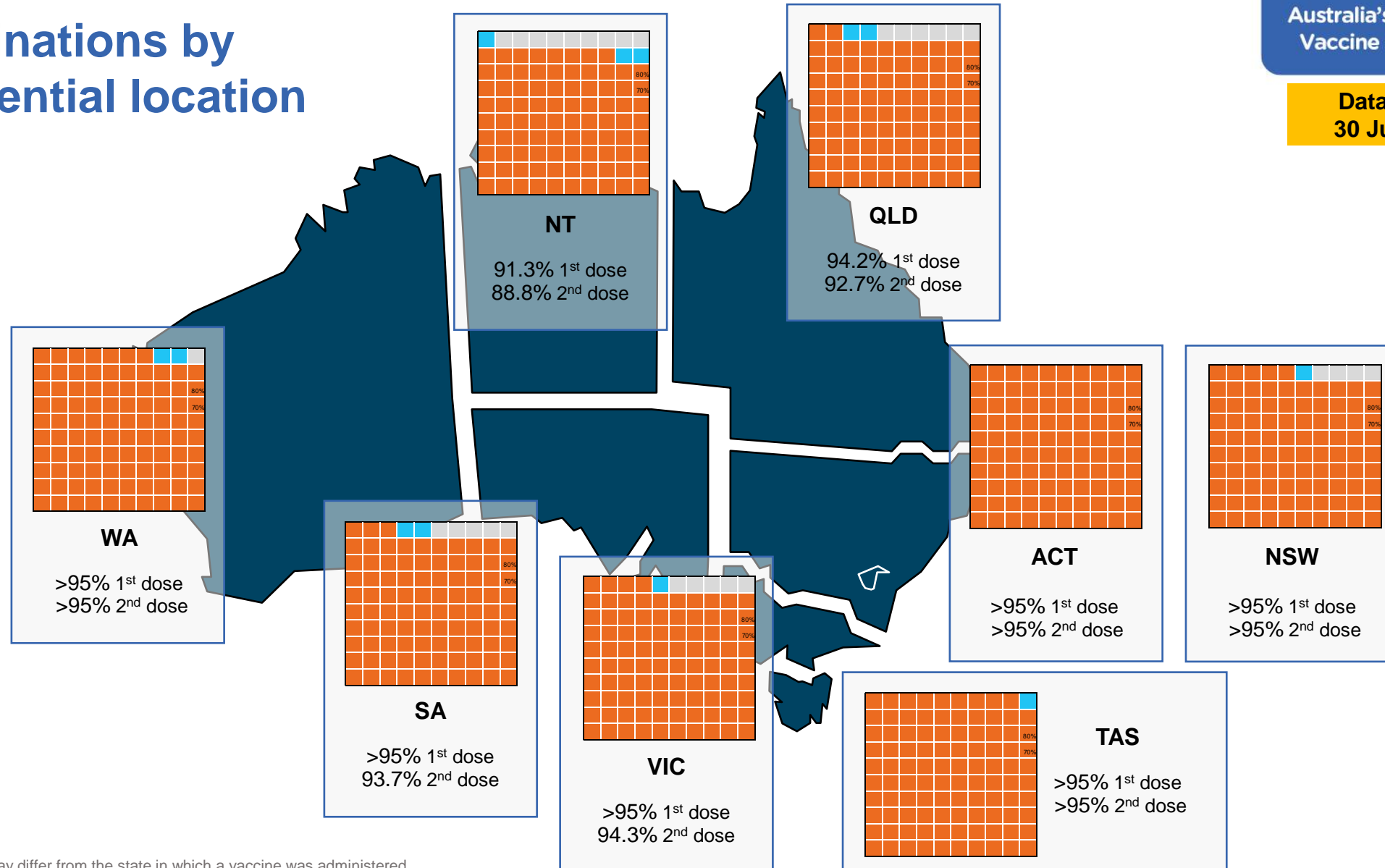
**11,544** doses administered to persons residing in other territories or with missing residential information

\*People become eligible for a winter booster four months after their third dose. Individuals may belong to multiple groups and could be represented in the above multiple times.  
#Aged Care Residents data as at 29 June 2022.

Source: Australian Immunisation Register

Data as at:  
30 Jun 2022

# Vaccinations by residential location



\*Residential state may differ from the state in which a vaccine was administered

# Commonwealth and Jurisdiction vaccine doses administered

Data as at:  
30 Jun 2022



**60,316,656** total vaccine doses administered nationally as at 30 June

**+ 37,031** recorded in the last 24 hours

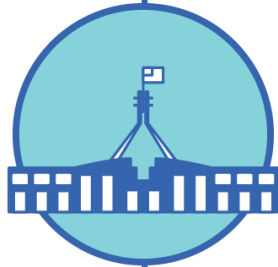


**21,306,049**

doses administered by state and territory facilities

**+ 3,083**

recorded in the last 24 hours



**39,010,607**

doses administered by commonwealth facilities

**+ 33,948**

recorded in the last 24 hours

**37,692,939** total vaccine doses administered in primary care settings

**1,317,668** total vaccine doses administered in aged care and disability settings

| NSW            | Jurisdictions | Commonwealth |
|----------------|---------------|--------------|
| Cumulative     | 5,143,574     | 13,571,613   |
| Daily increase | 143           | 11,350       |

| VIC            | Jurisdictions | Commonwealth |
|----------------|---------------|--------------|
| Cumulative     | 6,133,707     | 9,684,167    |
| Daily increase | 811           | 7,626        |

| QLD            | Jurisdictions | Commonwealth |
|----------------|---------------|--------------|
| Cumulative     | 3,862,553     | 7,542,790    |
| Daily increase | 229           | 7,810        |

| WA             | Jurisdictions | Commonwealth |
|----------------|---------------|--------------|
| Cumulative     | 2,533,288     | 4,098,366    |
| Daily increase | 476           | 3,003        |

| TAS            | Jurisdictions | Commonwealth |
|----------------|---------------|--------------|
| Cumulative     | 629,164       | 740,318      |
| Daily increase | 108           | 890          |

| SA             | Jurisdictions | Commonwealth |
|----------------|---------------|--------------|
| Cumulative     | 1,847,435     | 2,352,667    |
| Daily increase | 744           | 2,454        |

| ACT            | Jurisdictions | Commonwealth |
|----------------|---------------|--------------|
| Cumulative     | 808,879       | 772,293      |
| Daily increase | 512           | 653          |

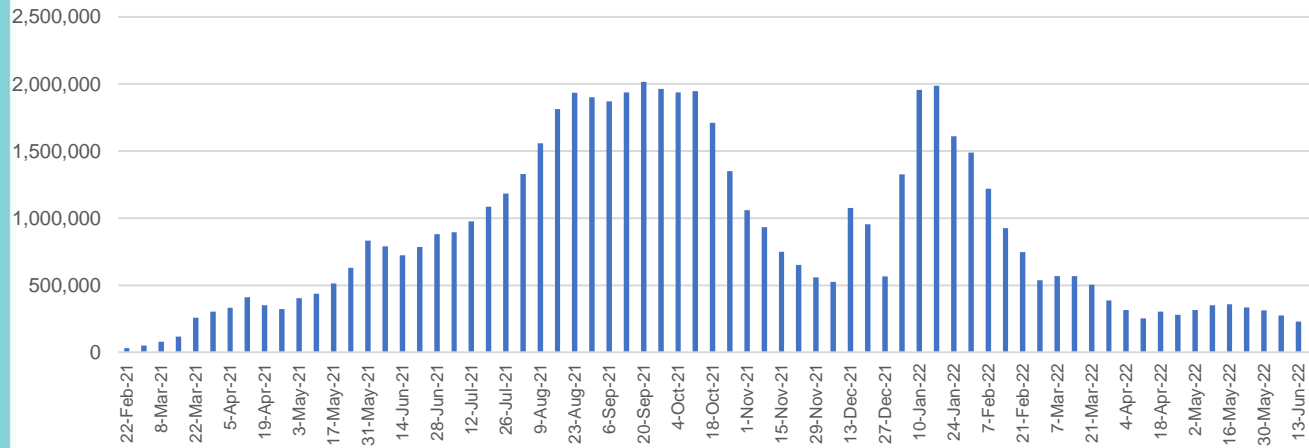
| NT             | Jurisdictions | Commonwealth |
|----------------|---------------|--------------|
| Cumulative     | 347,449       | 248,393      |
| Daily increase | 60            | 162          |

# Vaccine milestone charts

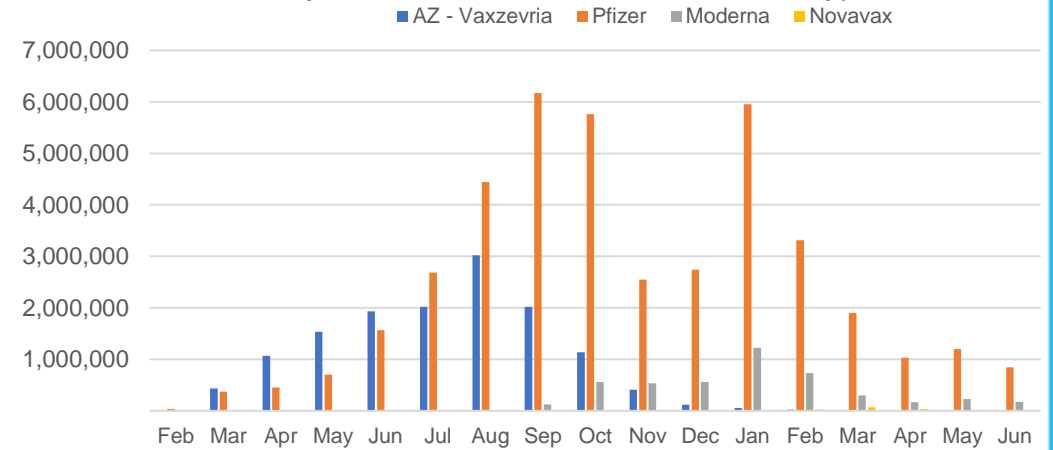
Data as at:  
30 Jun 2022

Australia's COVID-19  
Vaccine Roadmap

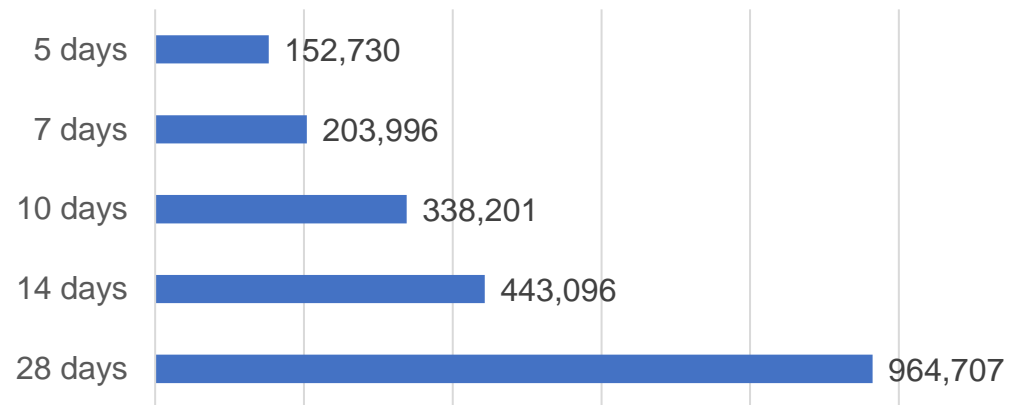
### Doses Administered by Week



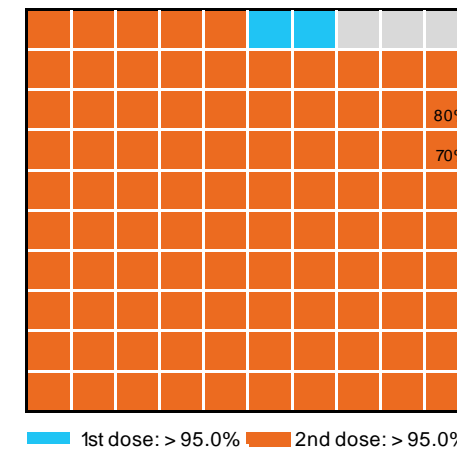
### Doses by administration month and vaccine type



### Doses Reported



### Eligible population percentage coverage



\*Each square represents 1% of the national population. Squares are filled as milestones are achieved.

\*Sourced from the Australian Immunisation Register.

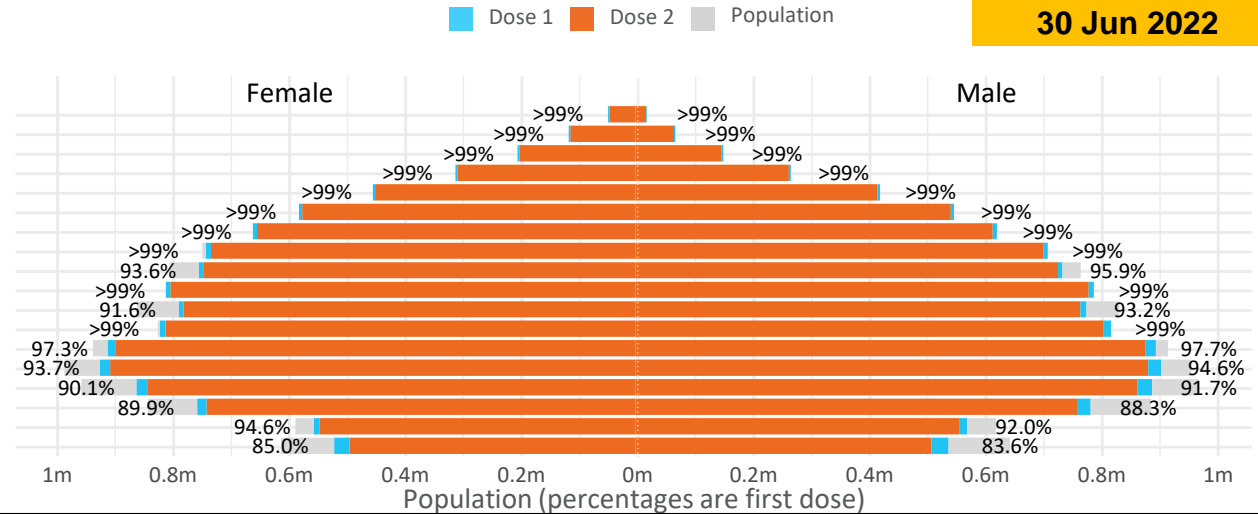
# Doses by age and sex

First and second doses by age and sex

|        | 16+   | 50+                                       | 12-15                                       | 5-11  |
|--------|---|---|---|---|
| Dose 1 | 97.54% (20,112,812 doses / 20,619,959 people) | >99% (8,930,313 doses / 8,749,703 people) | 84.34% (1,049,183 doses / 1,243,990 people) | 52.30% (1,190,760 doses / 2,276,638 people) |
| Dose 2 | 95.91% (19,776,200 doses / 20,619,959 people) | >99% (8,822,631 doses / 8,749,703 people) | 79.81% (992,835 doses / 1,243,990 people)   | 39.62% (902,032 doses / 2,276,638 people)   |

Data as at:  
30 Jun 2022

| Age   | Dose 1            | Dose 2            |
|-------|-------------------|-------------------|
| 95+   | 65,899 (>99%)     | 62,439 (>99%)     |
| 90-94 | 182,442 (>99%)    | 176,954 (>99%)    |
| 85-89 | 351,700 (>99%)    | 344,951 (>99%)    |
| 80-84 | 572,703 (>99%)    | 565,581 (>99%)    |
| 75-79 | 866,411 (>99%)    | 857,958 (>99%)    |
| 70-74 | 1,119,510 (>99%)  | 1,108,115 (>99%)  |
| 65-69 | 1,271,680 (>99%)  | 1,256,824 (>99%)  |
| 60-64 | 1,438,653 (>99%)  | 1,422,130 (99.0%) |
| 55-59 | 1,475,743 (94.9%) | 1,459,057 (93.8%) |
| 50-54 | 1,585,572 (>99%)  | 1,568,622 (>99%)  |
| 45-49 | 1,550,672 (92.5%) | 1,532,276 (91.4%) |
| 40-44 | 1,626,398 (>99%)  | 1,602,414 (98.9%) |
| 35-39 | 1,794,119 (97.8%) | 1,761,856 (96.0%) |
| 30-34 | 1,819,926 (94.6%) | 1,777,877 (92.4%) |
| 25-29 | 1,743,991 (91.5%) | 1,696,103 (89.0%) |
| 20-24 | 1,531,515 (89.4%) | 1,491,199 (87.1%) |
| 16-19 | 1,115,878 (93.3%) | 1,091,844 (91.3%) |
| 12-15 | 1,049,183 (84.3%) | 992,835 (79.8%)   |



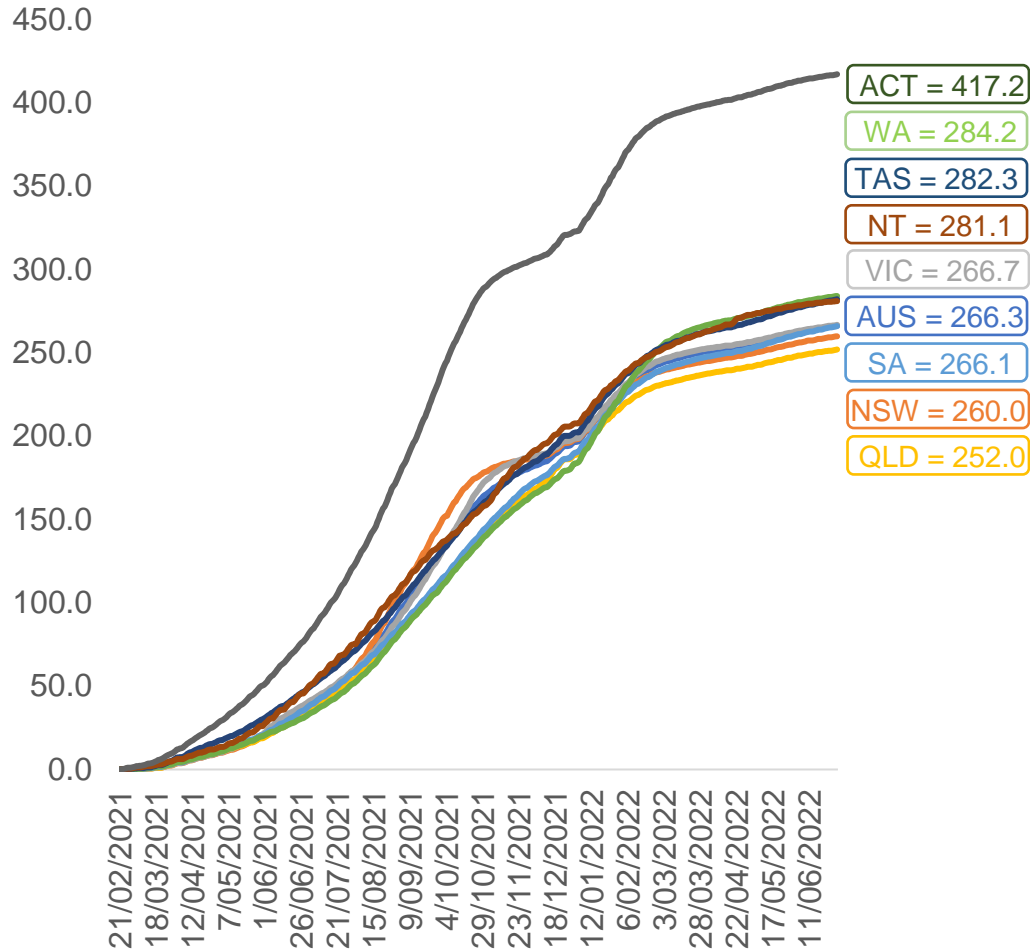
|                           | AUS         | ACT     | NSW       | NT      | QLD       | SA        | TAS     | VIC       | WA        |
|---------------------------|-------------|---------|-----------|---------|-----------|-----------|---------|-----------|-----------|
| 16 and over - dose 1      | 20,112,812  | 353,527 | 6,342,905 | 173,914 | 3,874,551 | 1,379,291 | 446,123 | 5,175,514 | 2,100,629 |
| 16 and over - dose 2      | 19,776,200  | 347,772 | 6,244,723 | 169,243 | 3,810,797 | 1,349,998 | 437,103 | 5,096,932 | 2,069,592 |
| 16 and over - population  | 20,619,959* | 344,037 | 6,565,651 | 190,571 | 4,112,707 | 1,440,400 | 440,172 | 5,407,574 | 2,114,978 |
| 16 and over % with dose 1 | 97.54%      | >99%    | 96.61%    | 91.26%  | 94.21%    | 95.76%    | >99%    | 95.71%    | >99%      |
| 16 and over % with dose 2 | 95.91%      | >99%    | 95.11%    | 88.81%  | 92.66%    | 93.72%    | >99%    | 94.26%    | 97.85%    |
| 5 to 11 - dose 1          | 1,190,760   | 31,740  | 355,611   | 13,143  | 206,228   | 83,603    | 28,435  | 324,278   | 140,102   |
| 5 to 11 - dose 2          | 902,032     | 27,352  | 275,696   | 8,804   | 150,176   | 63,646    | 23,161  | 246,218   | 102,353   |
| 5 to 11 - population      | 2,276,638   | 39,789  | 716,460   | 24,750  | 478,731   | 148,816   | 45,033  | 578,499   | 244,154   |
| 5 to 11 % with dose 1     | 52.30%      | 79.77%  | 49.63%    | 53.10%  | 43.08%    | 56.18%    | 63.14%  | 56.06%    | 57.38%    |
| 5 to 11 % with dose 2     | 39.62%      | 68.74%  | 38.48%    | 35.57%  | 31.37%    | 42.77%    | 51.43%  | 42.56%    | 41.92%    |
| 12 to 15 - dose 1         | 1,049,183   | 20,132  | 322,541   | 10,738  | 205,569   | 68,235    | 22,857  | 274,183   | 115,506   |
| 12 to 15 - dose 2         | 992,835     | 19,573  | 308,069   | 9,691   | 191,947   | 64,453    | 21,739  | 262,284   | 106,897   |
| 12 to 15 - population     | 1,243,990   | 19,693  | 390,330   | 13,060  | 270,146   | 82,747    | 26,308  | 308,611   | 132,869   |
| 12 to 15 % with dose 1    | 84.34%      | >99%    | 82.63%    | 82.22%  | 76.10%    | 82.46%    | 86.88%  | 88.84%    | 86.93%    |
| 12 to 15 % with dose 2    | 79.81%      | >99%    | 78.93%    | 74.20%  | 71.05%    | 77.89%    | 82.63%  | 84.99%    | 80.45%    |

\*National population will not equal sum of listed jurisdictions due to a small number of people counted in national population residing in some 'other' territories. Sum of state doses will not add to national total as some records are unable to be geocoded to a State or Territory. Doses sourced from Australian Immunisation Register, population from ABS ERP June 2020



# Vaccinations by location

Cumulative total doses administered vs eligible state populations\*

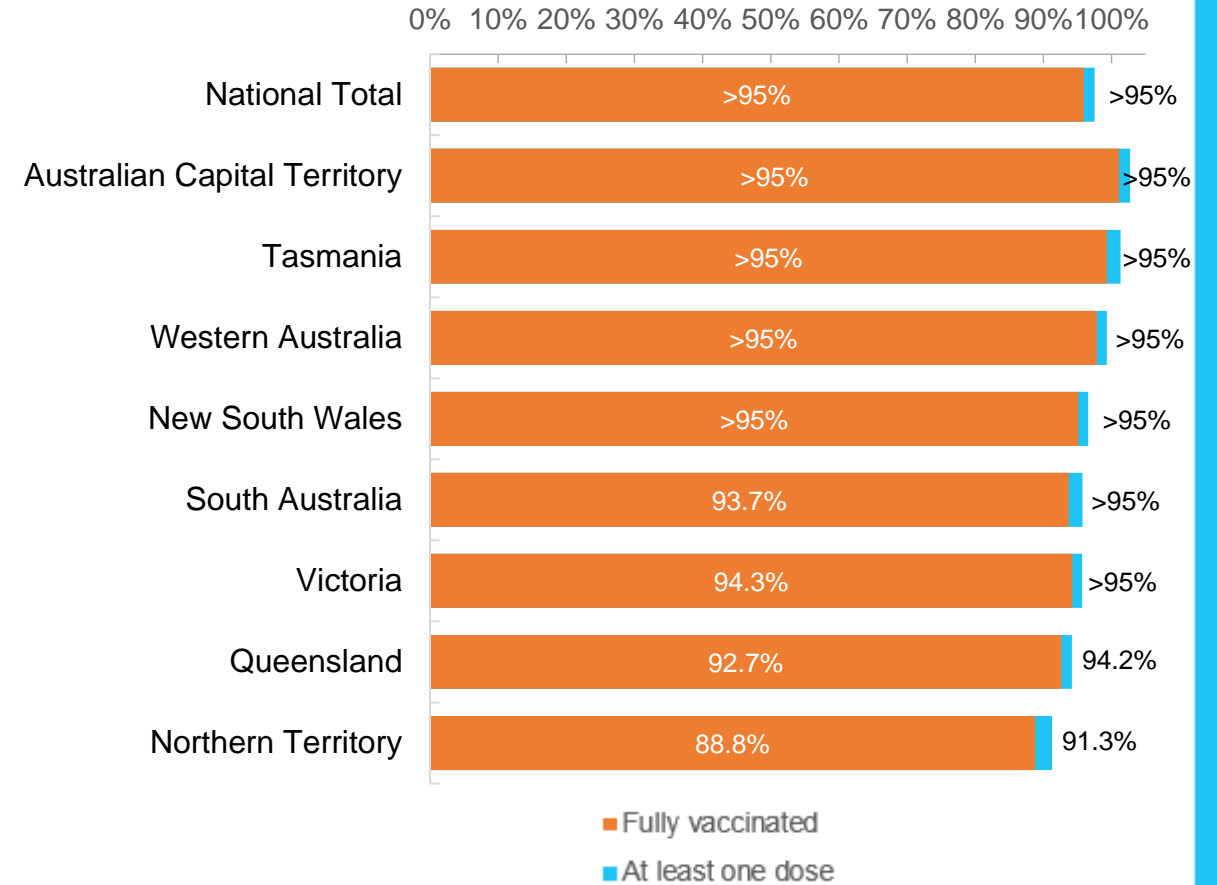


\*Not an indication of percentage vaccinated, numbers will exceed 100 due to multiple doses required per person of the population. All doses are included for those aged 12 and above, and are based on vaccination provider location.

Data as at:  
30 Jun 2022

Australia's COVID-19  
Vaccine Roadmap

First and Second Doses by residential location



# Aboriginal and Torres Strait Islander peoples

## Number of people vaccinated

Data as at:  
28 Jun 2022  
Updated weekly

Australia's COVID-19  
Vaccine Roadmap



**443,113**

people over the age of 16  
have had at least one dose

**85.0%**

of people over the age of 16  
have had at least one dose



**424,811**

people over the age of 16  
are fully vaccinated

**81.5%**

of people over the age of 16 are  
fully vaccinated



People aged 12 – 15 years

**47,872**

**42,003**

**67.8%**

**59.5%**

At least one dose

Fully vaccinated

### 178 Aboriginal community controlled health services (ACCHS)

|            |            |           |            |           |            |            |           |
|------------|------------|-----------|------------|-----------|------------|------------|-----------|
| 0#         | 50         | 27        | 44         | 12        | 3          | 21         | 21        |
| <b>ACT</b> | <b>NSW</b> | <b>NT</b> | <b>QLD</b> | <b>SA</b> | <b>TAS</b> | <b>VIC</b> | <b>WA</b> |

| Medicare Address State <sup>##</sup> | Individuals Dose 1 | Individuals Dose 1 % | Individuals Dose 2 | Individuals Dose 2 % |
|--------------------------------------|--------------------|----------------------|--------------------|----------------------|
| Australian Capital Territory         | 4,796              | 91.8%                | 4,674              | 89.5%                |
| New South Wales                      | 135,834            | 87.3%                | 132,792            | 85.4%                |
| Northern Territory                   | 41,467             | 89.7%                | 39,494             | 85.4%                |
| Queensland                           | 116,516            | 81.8%                | 111,181            | 78.1%                |
| South Australia                      | 20,051             | 80.5%                | 18,681             | 75.0%                |
| Tasmania                             | 13,878             | 88.8%                | 13,476             | 86.2%                |
| Victoria                             | 35,636             | 90.4%                | 34,853             | 88.4%                |
| Western Australia                    | 53,544             | 86.8%                | 49,909             | 80.9%                |
| Unknown/Other Territories            | 21,391             | 70.4%                | 19,751             | 65.0%                |
| <b>Totals</b>                        | <b>443,113</b>     | <b>85.0%</b>         | <b>424,811</b>     | <b>81.5%</b>         |

Source: Australian Immunisation Register

\*Identifying as Aboriginal and Torres Strait Islander is optional and the estimated population may be under reported.

\*\*Includes all Aboriginal and Torres Strait Islander peoples who have received a vaccination, not limited to those administered in an ACCHS setting

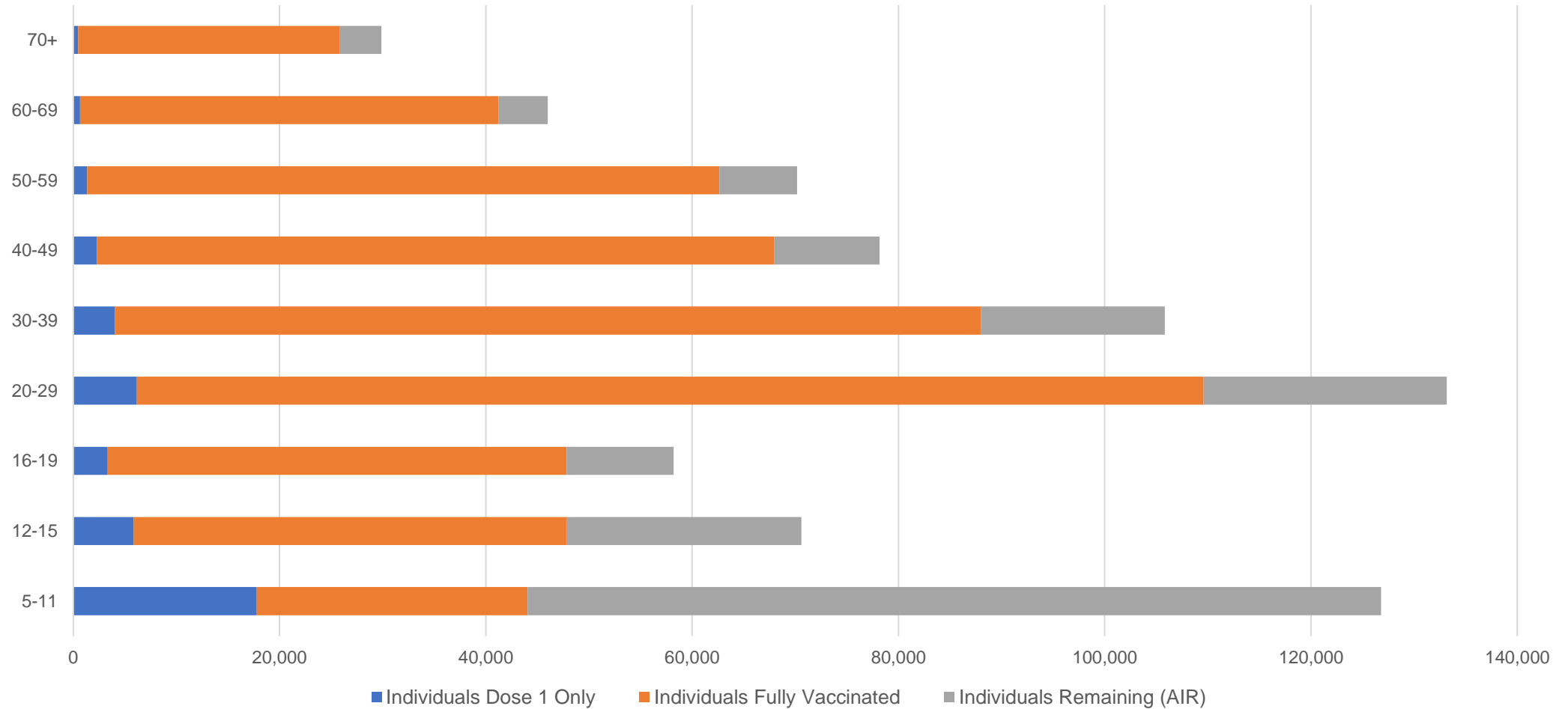
#ACCHS in the ACT are currently operating as a Commonwealth Vaccine Clinics so not included to avoid double counting

##The above table includes all identified Aboriginal and Torres Strait Islander people who are aged 16 and above by their state of residence.

# Aboriginal and Torres Strait Islander peoples Number of people vaccinated by age

Data as at:  
28 Jun 2022  
Updated weekly

Australia's COVID-19  
Vaccine Roadmap



Source: Australian Immunisation Register

# Commonwealth primary care

Data as at:  
30 Jun 2022

Australia's COVID-19  
Vaccine Roadmap



## Primary care vaccine administration sites

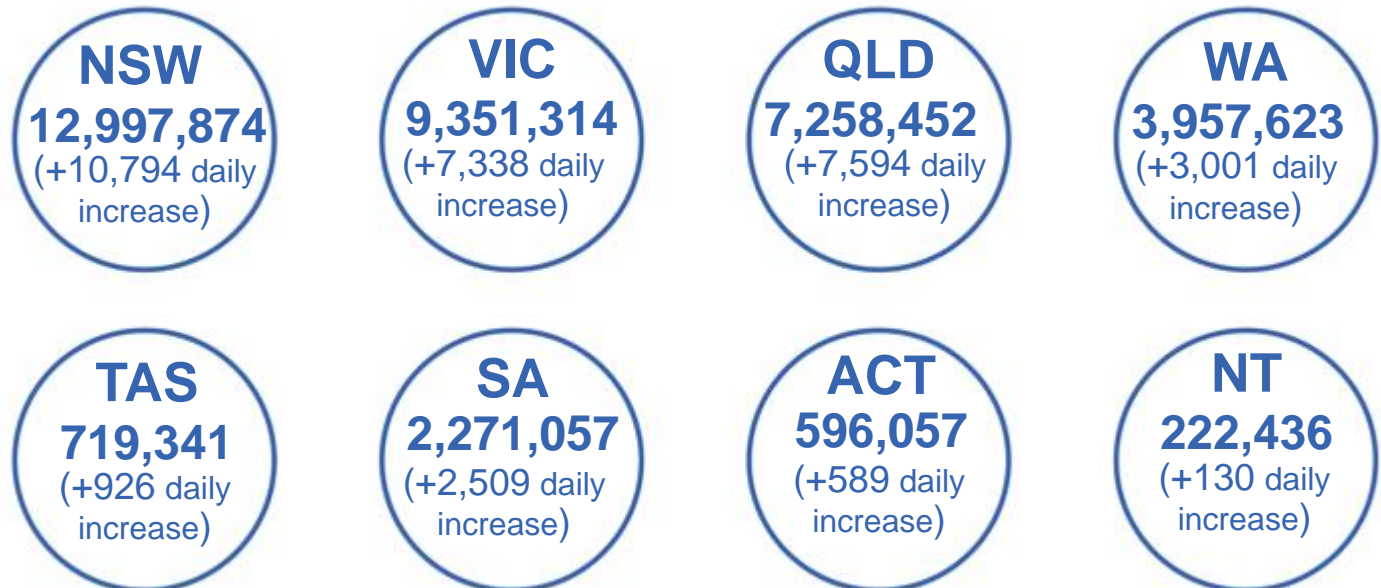
|              |            |            |              |
|--------------|------------|------------|--------------|
| <b>5,707</b> | <b>128</b> | <b>178</b> | <b>3,614</b> |
| GPs          | CVCs       | ACCHS      | Pharmacies   |



**37,692,939** total vaccine doses administered  
primary care settings as at 30 June  
**+ 33,337** recorded in the last 24 hours

## Primary care vaccinations by provider type

|   | Doses administered | Daily increase | 7 day increase |
|---|--------------------|----------------|----------------|
| <b>General Practice*</b><br>includes other Commonwealth | 30,114,686         | 22,643         | 122,449        |
| <b>Pharmacy</b>   | 7,578,253          | 10,694         | 57,817         |



**318,785**

doses administered to persons  
residing in other territories or with  
missing residential information

\*General practice includes Commonwealth Vaccination Clinics, Aboriginal Community Health Centres, Royal Flying Doctor Service and other Commonwealth vaccination facilities

Source: Australian Immunisation Register

Data as at:  
30 Jun 2022

# Commonwealth aged care and disability doses administered



**1,317,668** (+ 611 last 24 hours)

Total vaccine doses administered in aged care and disability facilities as at 30 June

Number of doses administered as part of the Commonwealth aged and disability care rollout

**NSW**  
**572,335**  
(+22 daily increase)

**VIC**  
**247,660**  
(+25 daily increase)

**QLD**  
**209,817**  
(+222 daily increase)

**WA**  
**112,291**  
(+92 daily increase)

**TAS**  
**23,752**  
(+44 daily increase)

**SA**  
**86,454**  
(<10 daily increase)

**ACT**  
**17,959**  
(+34 daily increase)

**NT**  
**7,711**  
(<10 daily increase)

**39,689**

doses administered to persons residing in other territories or with missing residential information

\*Sourced from the Australian Immunisation Register. Includes all persons vaccinated at participating residential aged care, disability and related industry settings.

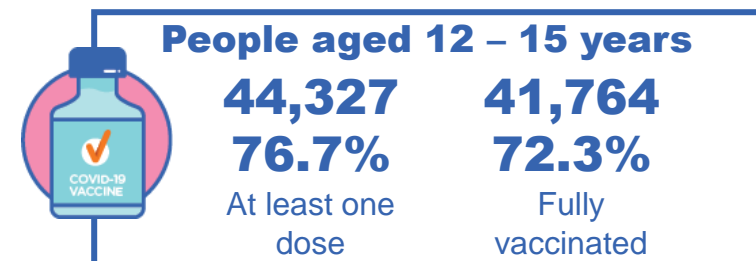
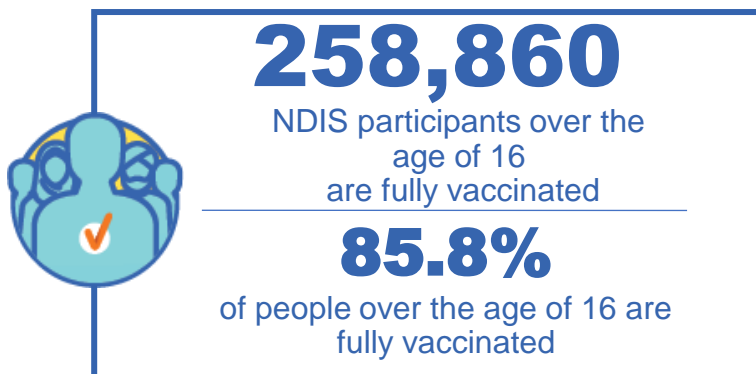
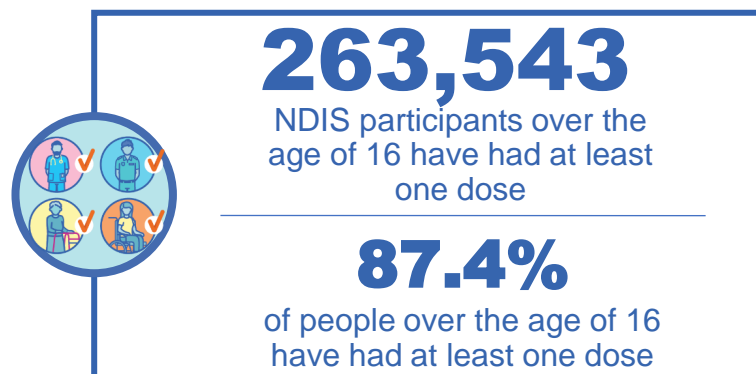
\*\*State level breakdown indicates the residential location and may not align to the state in which the vaccination occurred.

Source: Australian Immunisation Register

# National Disability Insurance Scheme (NDIS) reported vaccinations

Data as at:  
30 June 2022  
Updated weekly

Australia's COVID-19  
Vaccine Roadmap



## NDIS participant vaccinations

|                 | People aged 16+ with at least one dose | People aged 16+ fully vaccinated | % People aged 16+ with at least one dose | % People aged 16+ fully vaccinated |
|-----------------|--|----------------------------------|--|------------------------------------|
| ACT             | 4,957                                  | 4,893                            | <b>89.3%</b>                             | <b>88.2%</b>                       |
| NSW             | 80,634                                 | 79,372                           | <b>87.8%</b>                             | <b>86.4%</b>                       |
| NT              | 2,298                                  | 2,227                            | <b>78.7%</b>                             | <b>76.3%</b>                       |
| QLD             | 52,303                                 | 51,315                           | <b>85.8%</b>                             | <b>84.2%</b>                       |
| SA              | 21,582                                 | 21,083                           | <b>85.2%</b>                             | <b>83.2%</b>                       |
| TAS             | 6,583                                  | 6,430                            | <b>87.6%</b>                             | <b>85.6%</b>                       |
| VIC             | 69,988                                 | 68,840                           | <b>88.5%</b>                             | <b>87.1%</b>                       |
| WA              | 25,198                                 | 24,700                           | <b>88.8%</b>                             | <b>87.0%</b>                       |
| <b>National</b> | <b>263,543</b>                         | <b>258,860</b>                   | <b>87.4%</b>                             | <b>85.8%</b>                       |

Source: Linkage between National Disability Insurance Agency data and the Australian Immunisation Register. Total NDIS participant numbers as at 30 May. Australian Immunisation Register data as at 29 June. Includes all participants regardless of residence type.

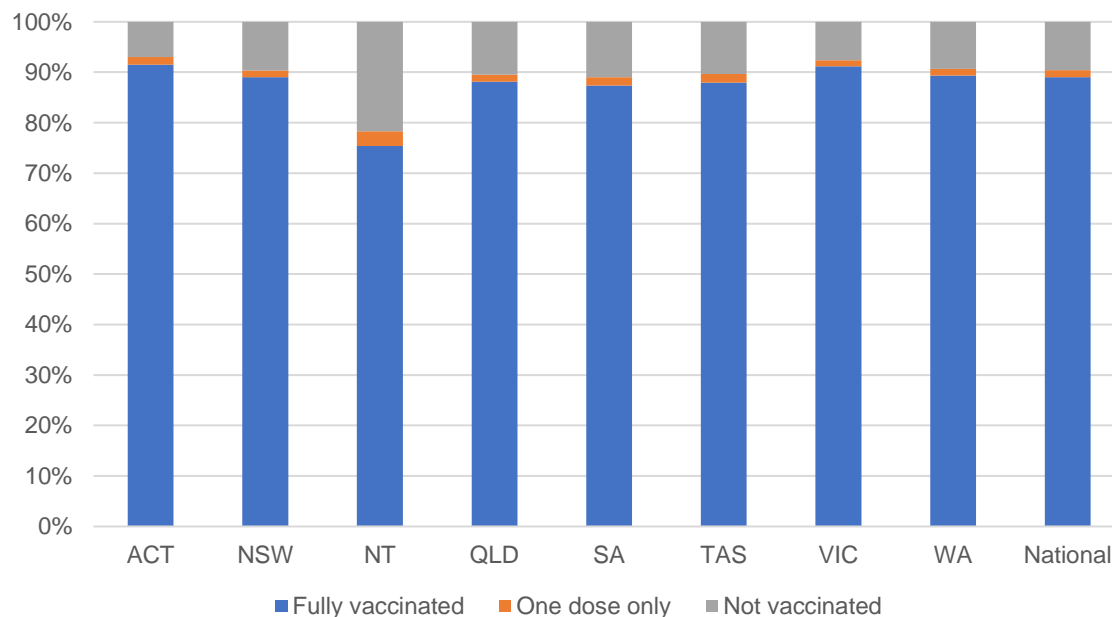
# National Disability Insurance Scheme (NDIS) reported vaccinations

Data as at:  
30 June 2022  
Updated weekly

Australia's COVID-19  
Vaccine Roadmap

| NATIONAL   | Total people with at least one dose | People fully vaccinated | Total number of individuals in cohort | % People with at least one dose | % People fully vaccinated |
|--|-------------------------------------|-------------------------|---------------------------------------|---------------------------------|---------------------------|
| NDIS participants living in disability accommodation | 21,298                              | 20,973                  | 23,469                                | 90.7%                           | 89.4%                     |

## NDIS participants in disability and aged care accommodation



Source: Linkage between National Disability Insurance Agency data and the Australian Immunisation Register. Includes participants residing in disability accommodation only.

Source: Total NDIS participant numbers as at 30 May. Participant data as at 29 June. Australian Immunisation Register data as at 29 June. Worker data as at 30 June.

## NDIS workforce vaccinations

|              | NDIS workers with at least one dose | NDIS workers fully vaccinated | % NDIS workers with at least one dose | % NDIS workers fully vaccinated |
|--------------|-------------------------------------|-------------------------------|---------------------------------------|---------------------------------|
| NSW          | 127,532                             | 122,353                       | 98.2%                                 | 94.3%                           |
| VIC          | 118,277                             | 114,994                       | 98.5%                                 | 95.7%                           |
| QLD          | 71,506                              | 70,666                        | 97.9%                                 | 96.7%                           |
| WA           | 34,529                              | 33,079                        | 99.0%                                 | 94.8%                           |
| SA           | 35,855                              | 33,971                        | 98.5%                                 | 93.3%                           |
| TAS          | 12,437                              | 12,025                        | 98.8%                                 | 95.5%                           |
| ACT          | 12,329                              | 12,302                        | 99.8%                                 | 99.6%                           |
| NT           | 3,959                               | 3,809                         | 99.6%                                 | 95.8%                           |
| <b>TOTAL</b> | <b>416,424</b>                      | <b>403,199</b>                | <b>98.4%</b>                          | <b>95.3%</b>                    |

Source: the NDIS Commission has established a requirement for registered NDIS providers who provide intensive disability support services to report on the vaccination status of workers they employ, or otherwise engage, to deliver NDIS-funded supports and services, and who are required to be vaccinated in accordance with in-force state and territory public health orders. The statistics reflect data reported to the NDIS Commission by registered NDIS providers and should be considered indicative and subject to change

Note: Some registered NDIS providers are yet to report on the vaccination status of their workforce. The NDIS Commission is working with those providers around reporting requirements.

Remaining workers not included include those exempt from vaccination requirements, workers whose vaccination status is not yet verified by the provider (such as workers on leave) and provider reporting anomalies.

# Residential aged care vaccination rollout

Data as at:  
30 June 2022  
Updated weekly

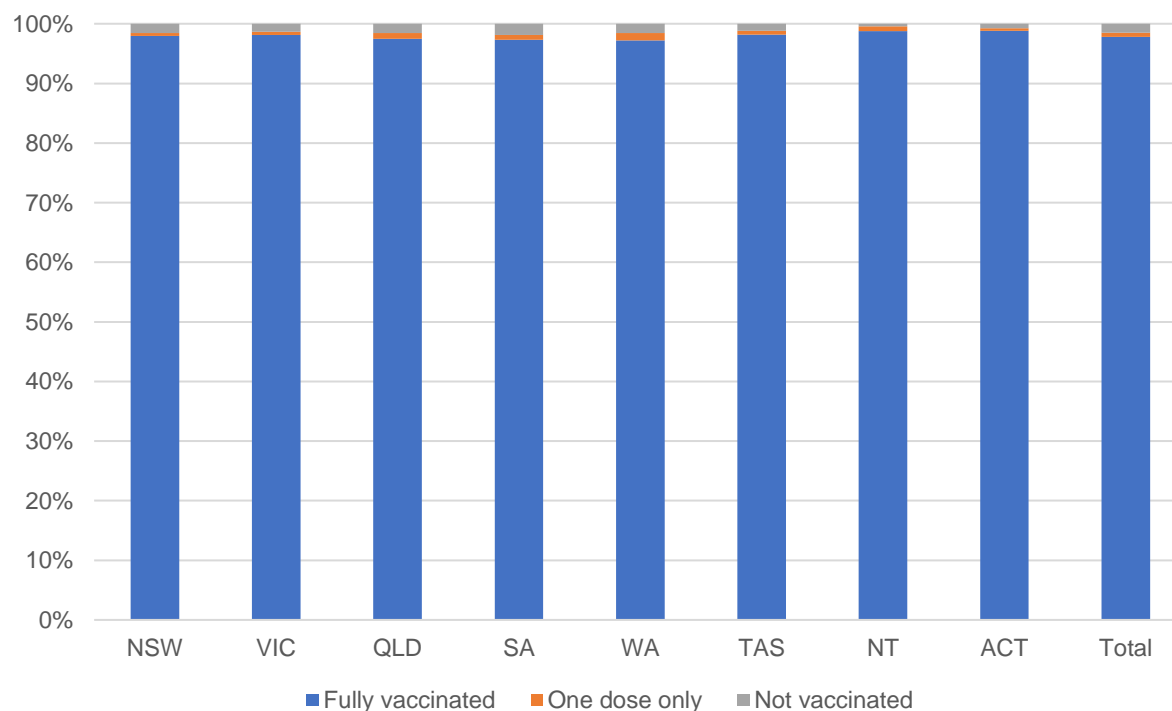
Residential aged care facilities status

**176,490**      **177,740**

People fully vaccinated

People with at least one dose

## Aged care resident vaccinations



## Aged care worker vaccinations

| Jurisdictions | Total workers with at least one dose | Workers fully vaccinated | % Workers with at least one dose | % Workers fully vaccinated |
|---------------|--------------------------------------|--------------------------|----------------------------------|----------------------------|
| NSW           | 77,570                               | 77,442                   | 99.9%                            | 99.7%                      |
| VIC           | 71,156                               | 71,155                   | 100.0%                           | 100.0%                     |
| QLD           | 48,482                               | 48,481                   | 99.9%                            | 99.8%                      |
| SA            | 27,012                               | 27,005                   | 100.0%                           | 100.0%                     |
| WA            | 24,639                               | 24,638                   | 100.0%                           | 100.0%                     |
| TAS           | 7,534                                | 7,534                    | 100.0%                           | 100.0%                     |
| NT            | 920                                  | 920                      | 100.0%                           | 100.0%                     |
| ACT           | 2,953                                | 2,953                    | 100.0%                           | 100.0%                     |
| <b>Total</b>  | <b>260,266</b>                       | <b>260,128</b>           | <b>99.9%</b>                     | <b>99.9%</b>               |

Source: Residential aged care provider self-reported COVID-19 vaccination information

\*Status updates are provided by facilities at least once per week. Reporting is updated Monday to Friday to encompass different facility updates being made on different days.

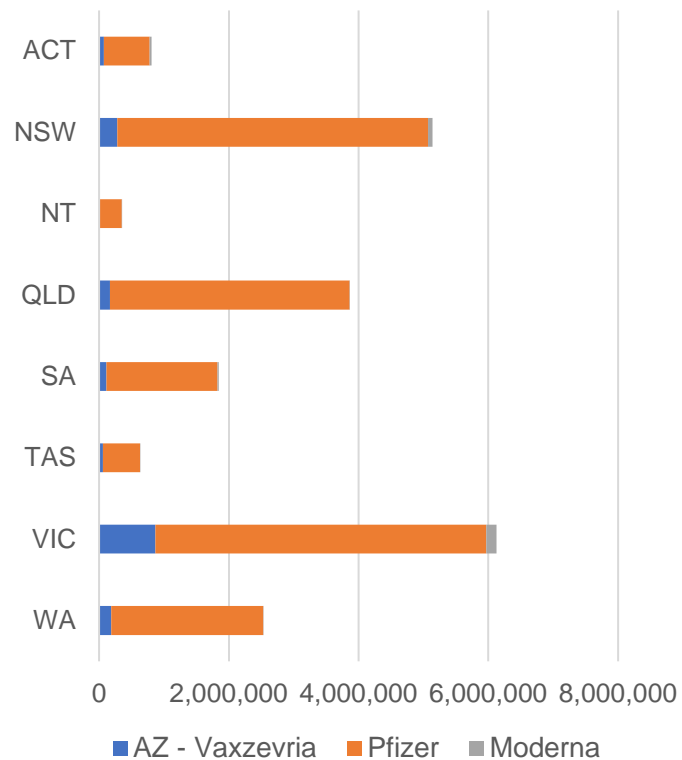
Data is sourced directly from Aged Care Service Providers and is not drawn or closely aligned with data from AIR due to inconsistencies and potential lags in uploading of records.



Data as at:  
30 Jun 2022

## Jurisdiction administered

Total vaccine doses administered in State and Territory clinics as at 30 June



**21,306,049** total vaccine doses administered in State and Territory clinics as at 30 June  
 + **3,083** recorded in the last 24 hours  
 + **21,008** recorded in the last 7 days

**NSW**  
**5,143,574**  
 (+143 daily increase)

**VIC**  
**6,133,707**  
 (+811 daily increase)

**QLD**  
**3,862,553**  
 (+229 daily increase)

**WA**  
**2,533,288**  
 (+476 daily increase)

**TAS**  
**629,164**  
 (+108 daily increase)

**SA**  
**1,847,435**  
 (+744 daily increase)

**ACT**  
**808,879**  
 (+512 daily increase)

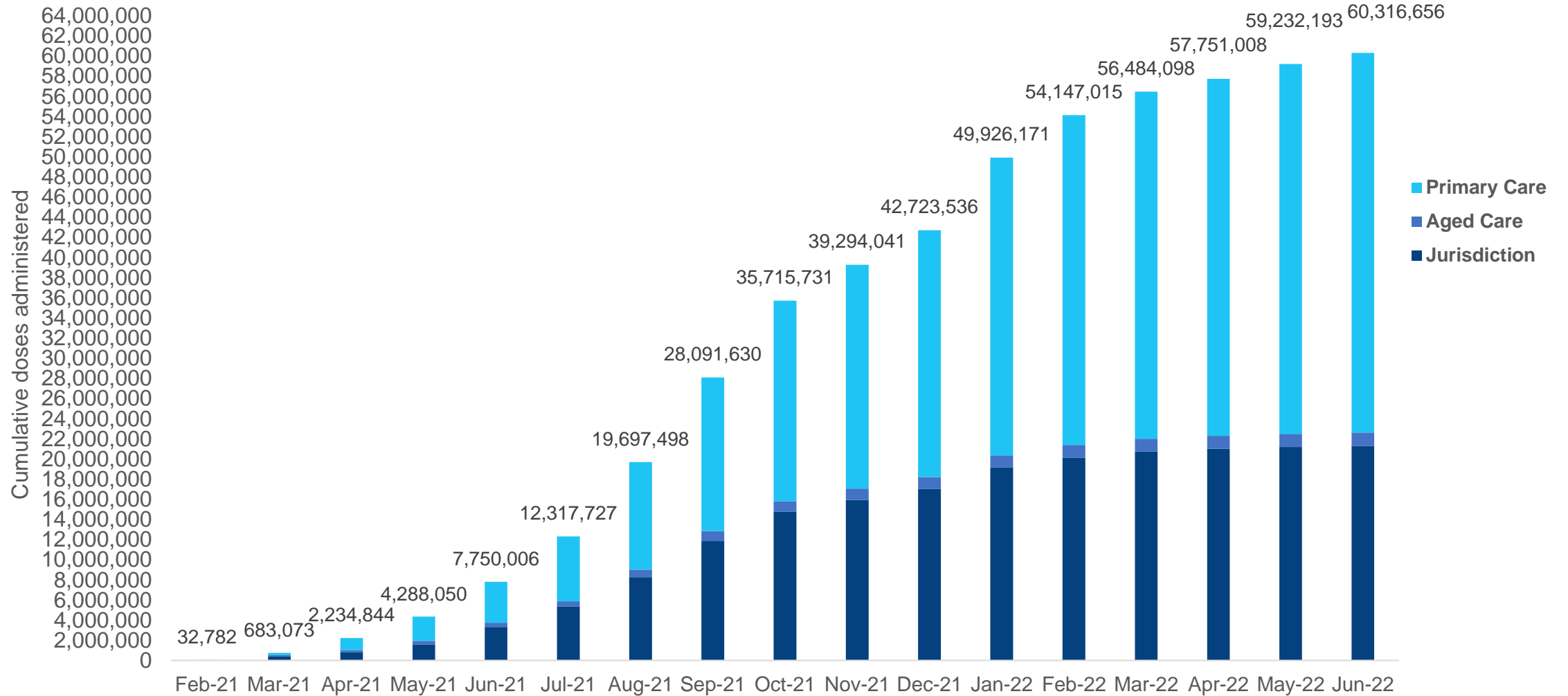
**NT**  
**347,449**  
 (+60 daily increase)

\*Sourced from the Australian Immunisation Register. Numbers are calculated as difference in daily cumulative reported numbers to allow for historical corrections.

Source: Australian Immunisation Register

Data as at:  
30 Jun 2022

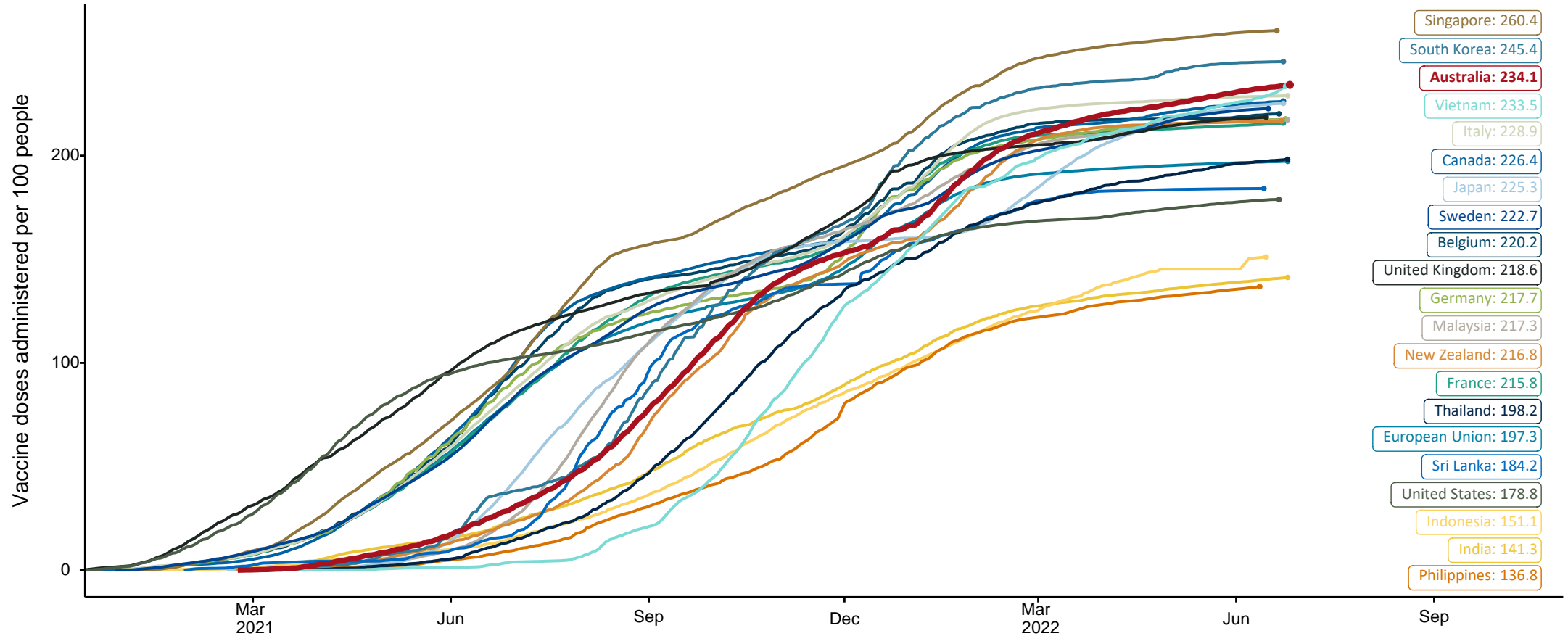
# Cumulative doses administered by channel



Source: Australian Immunisation Register

# COVID-19 vaccine doses per 100, Australia and select countries

Data as at:  
26 June 2022  
Updated weekly

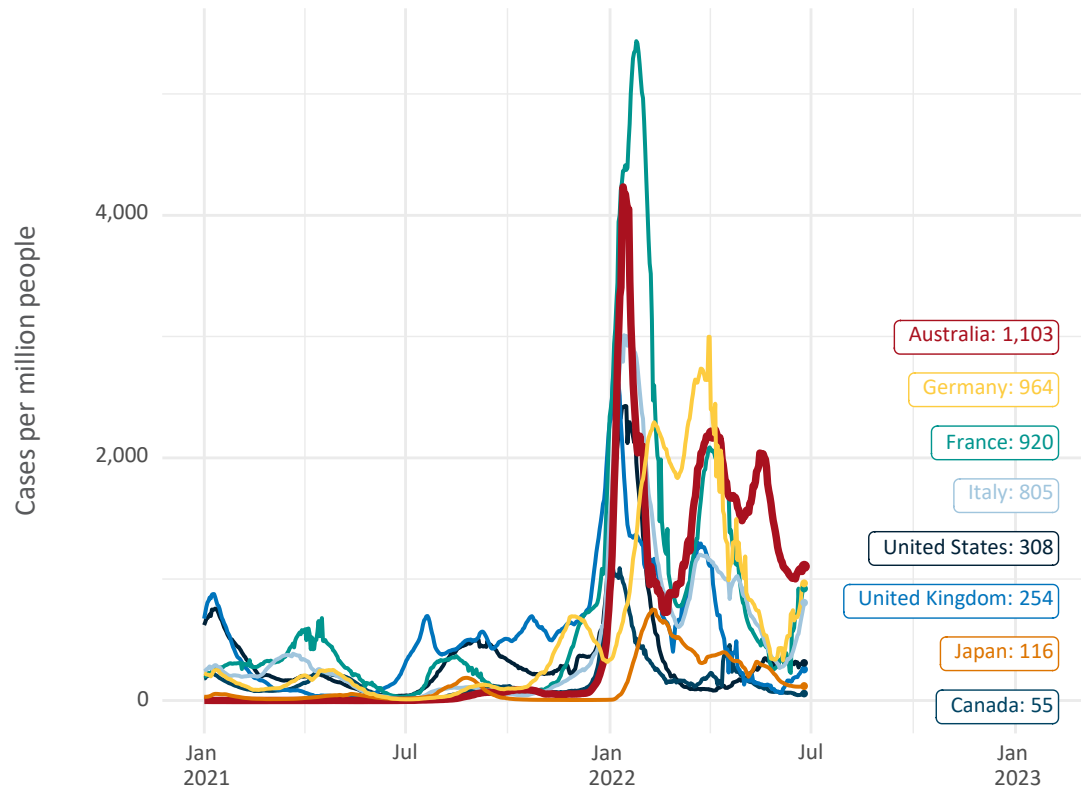


Note: From 11 January 2022, data for Australia includes all doses administered to people 5 and over. Prior to 11 January, data was for 12 and over.  
Source: Department of Health (Australia), Our World in Data (international)  
Latest data: 26 June

Data as at:  
26 June 2022  
Updated weekly

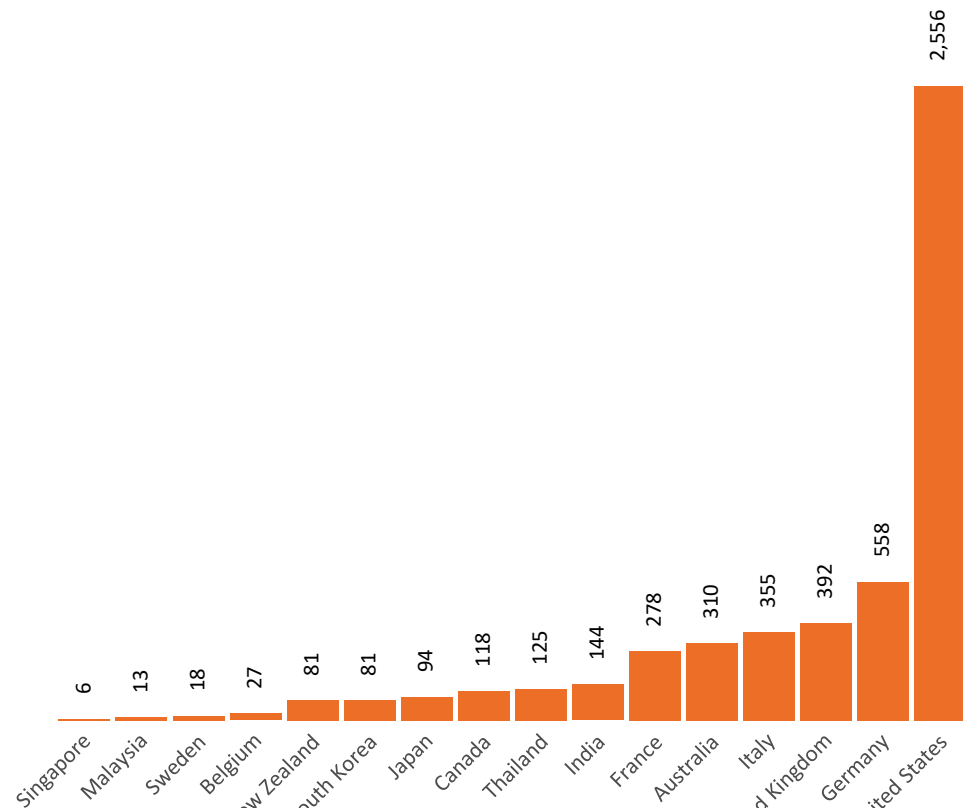
# International data – COVID-19

New daily cases per million since 2021, Australia and G7 countries  
Smoothed - 7 day average



Source: OWID  
Data downloaded: 27 Jun 2022 08:54  
Latest data: 25 Jun 2022

COVID-19 deaths in past 7 days - Australia and select countries



Source: OWID  
Data downloaded: 27 Jun 2022 08:54  
Latest data: 25 Jun 2022