



**CURRENT STATUS OF CONFIRMED CASES**



**140**



ACT	NSW	NT	QLD	SA	TAS	VIC	WA
6	62	0	15	12	3	30	12



ACT	NSW	NT	QLD	SA	TAS	VIC	WA
13	1,882	19	697	254	80	592	240
5							

**74,492,328**

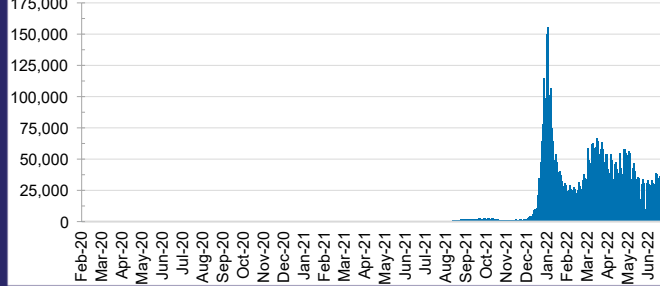


TOTAL TESTS  
REPORTED

ACT	NSW	NT	QLD
1,269,525	32,942,025	806,060	7,947,379

SA	TAS	VIC	WA
5,154,121	715,694	21,499,305	4,158,219

**DAILY NUMBER OF REPORTED CASES**

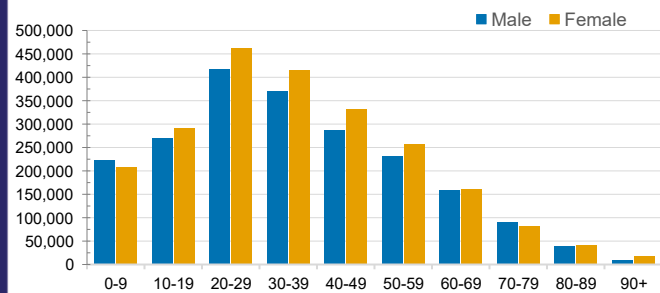


**CASES IN AGED CARE SERVICES**

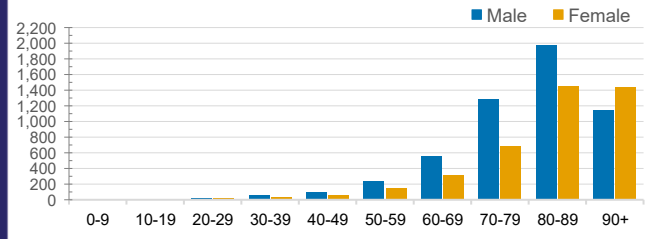
Confirmed Cases	Australia	ACT	NSW	NT	QLD	SA	TAS	VIC	WA
Residential Care Recipients	62178 (2965)	783 (38)	21062 (994)	151 (6)	10341 (384)	4799 (231)	1424 (24)	18706 (1118)	4912 (170)
In Home Care Recipients	46,549	822	16,457	181	8,951	4,353	756	10,039	4,990

Cases in care recipients (deaths)

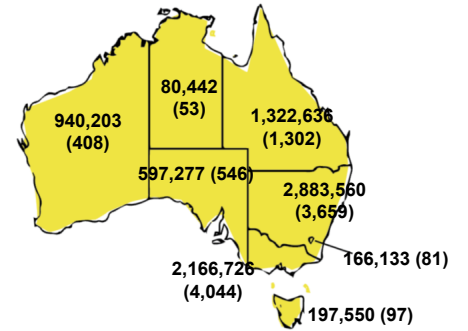
**CASES BY AGE GROUP AND SEX**



**DEATHS BY AGE GROUP AND SEX**

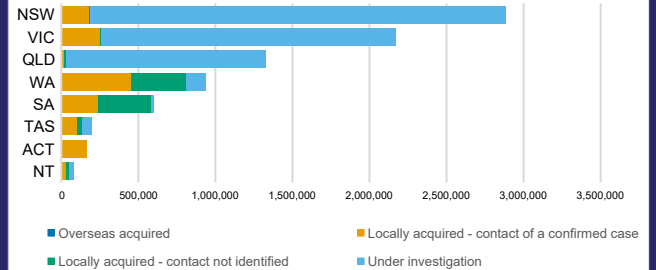


**CASES (DEATHS) BY STATE AND TERRITORIES**



**CASES BY SOURCE OF INFECTION**

Australia (% of all confirmed cases)



**PUBLIC HEALTH RESPONSE MEASURE**

Proportion of total cases under investigation

