



CURRENT STATUS OF CONFIRMED CASES



138



ACT	NSW	NT	QLD	SA	TAS	VIC	WA
5	64	1	18	11	2	29	8

3,781



ACT	NSW	NT	QLD	SA	TAS	VIC	WA
13	1,822	24	705	267	79	523	226
5							

74,414,038

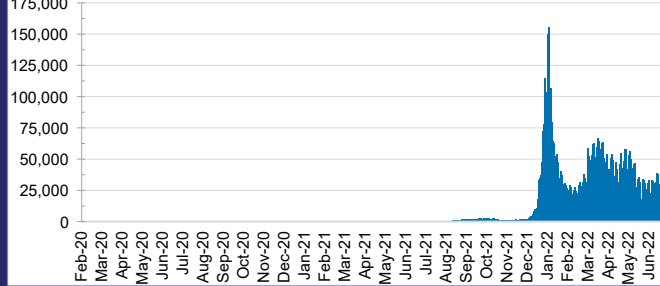


**TOTAL TESTS
REPORTED**

ACT	NSW	NT	QLD
1,266,603	32,907,519	805,653	7,939,116

SA	TAS	VIC	WA
5,145,876	714,476	21,485,449	4,149,346

DAILY NUMBER OF REPORTED CASES

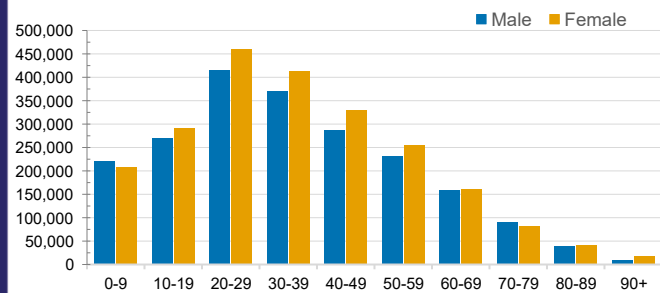


CASES IN AGED CARE SERVICES

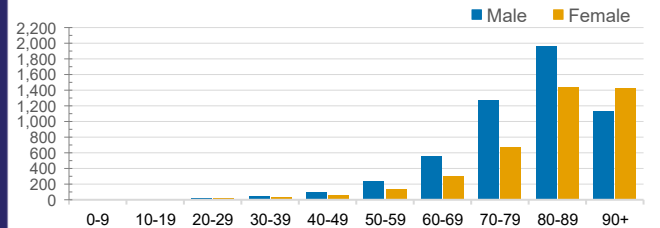
Confirmed Cases	Australia	ACT	NSW	NT	QLD	SA	TAS	VIC	WA
Residential Care Recipients	61452 (2935)	771 (38)	20840 (980)	143 (6)	10206 (376)	4784 (230)	1388 (24)	18453 (1112)	4867 (169)
In Home Care Recipients	46,114	817	16,328	177	8,867	4,333	738	9,928	4,956

Cases in care recipients (deaths)

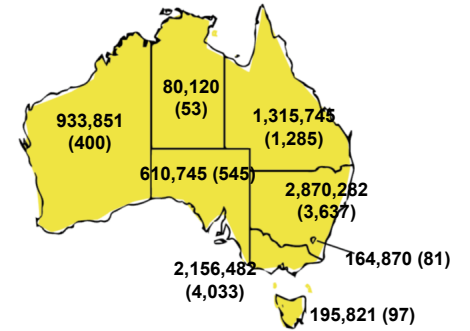
CASES BY AGE GROUP AND SEX



DEATHS BY AGE GROUP AND SEX

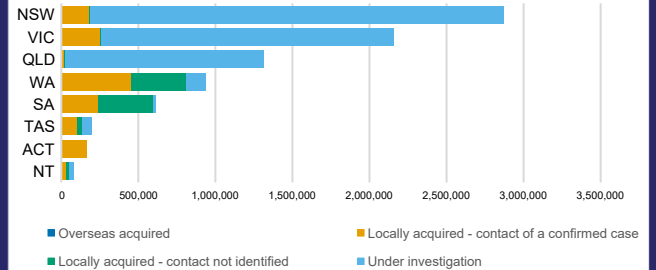


CASES (DEATHS) BY STATE AND TERRITORIES



CASES BY SOURCE OF INFECTION

Australia (% of all confirmed cases)



PUBLIC HEALTH RESPONSE MEASURE

Proportion of total cases under investigation

