



**CURRENT STATUS OF CONFIRMED CASES**



**123**



ACT	NSW	NT	QLD	SA	TAS	VIC	WA
2	58	0	14	10	2	28	9

**3,740**



ACT	NSW	NT	QLD	SA	TAS	VIC	WA
13	1,782	21	710	234	76	543	238

**74,333,211**

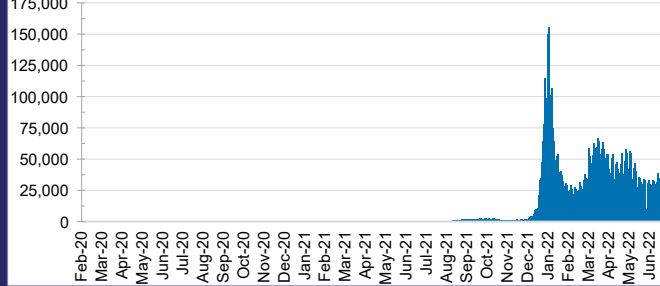


**TOTAL TESTS REPORTED**

ACT	NSW	NT	QLD
1,262,978	32,872,519	805,301	7,930,856

SA	TAS	VIC	WA
5,136,830	713,078	21,470,894	4,140,755

**DAILY NUMBER OF REPORTED CASES**

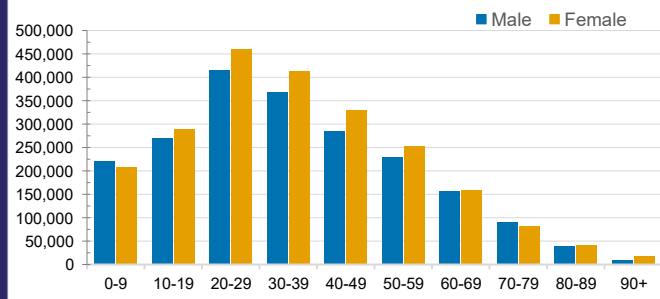


**CASES IN AGED CARE SERVICES**

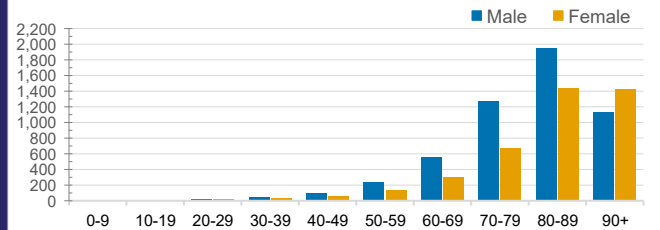
Confirmed Cases	Australia	ACT	NSW	NT	QLD	SA	TAS	VIC	WA
Residential Care Recipients	60781 (2923)	767 (38)	20584 (977)	140 (6)	10064 (374)	4747 (228)	1376 (24)	18258 (1108)	4845 (168)
In Home Care Recipients	45,825	815	16,198	175	8,767	4,305	734	9,840	4,991

Cases in care recipients (deaths)

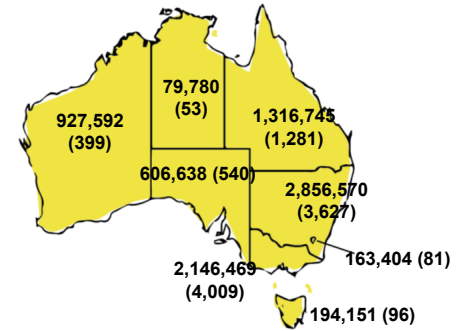
**CASES BY AGE GROUP AND SEX**



**DEATHS BY AGE GROUP AND SEX**

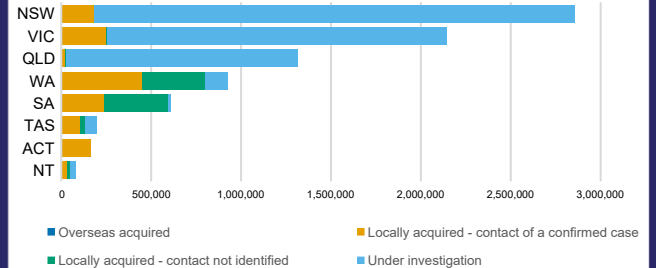


**CASES (DEATHS) BY STATE AND TERRITORIES**



**CASES BY SOURCE OF INFECTION**

Australia (% of all confirmed cases)



**PUBLIC HEALTH RESPONSE MEASURE**

Proportion of total cases under investigation

