



CURRENT STATUS OF CONFIRMED CASES



118



ACT	NSW	NT	QLD	SA	TAS	VIC	WA
2	50	1	16	9	3	28	9

3,511



ACT	NSW	NT	QLD	SA	TAS	VIC	WA
13	1,725	21	598	220	72	513	226

74,206,637

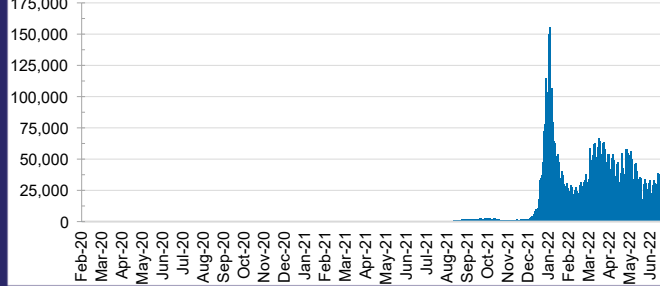


TOTAL TESTS REPORTED

ACT	NSW	NT	QLD
1,188,516	32,851,385	804,923	7,924,904

SA	TAS	VIC	WA
5,131,006	711,981	21,461,894	4,132,028

DAILY NUMBER OF REPORTED CASES

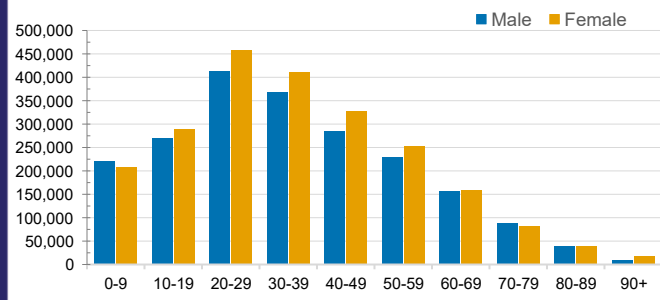


CASES IN AGED CARE SERVICES

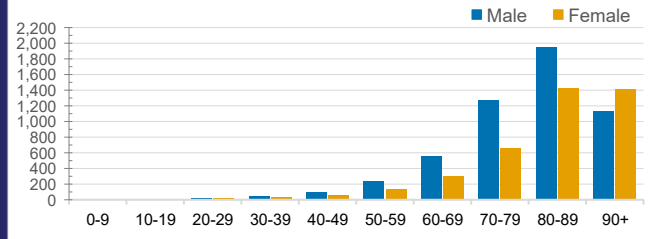
Confirmed Cases	Australia	ACT	NSW	NT	QLD	SA	TAS	VIC	WA
Residential Care Recipients	59968 (2906)	762 (38)	20342 (965)	140 (6)	9837 (374)	4716 (225)	1356 (24)	18001 (1107)	4814 (167)
In Home Care Recipients	45,387	815	16,068	175	8,609	4,259	733	9,753	4,975

Cases in care recipients (deaths)

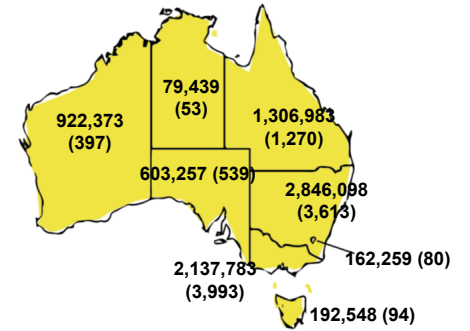
CASES BY AGE GROUP AND SEX



DEATHS BY AGE GROUP AND SEX

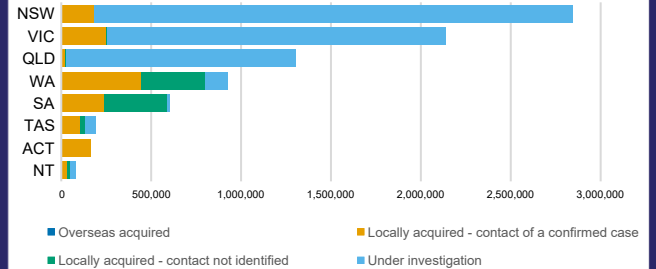


CASES (DEATHS) BY STATE AND TERRITORIES



CASES BY SOURCE OF INFECTION

Australia (% of all confirmed cases)



PUBLIC HEALTH RESPONSE MEASURE

Proportion of total cases under investigation

