



CURRENT STATUS OF CONFIRMED CASES



98



ACT	NSW	NT	QLD	SA	TAS	VIC	WA
2	37	2	14	8	3	21	11



3,267

ACT	NSW	NT	QLD	SA	TAS	VIC	WA
12	1,534	15	631	237	44	465	219

73,967,291

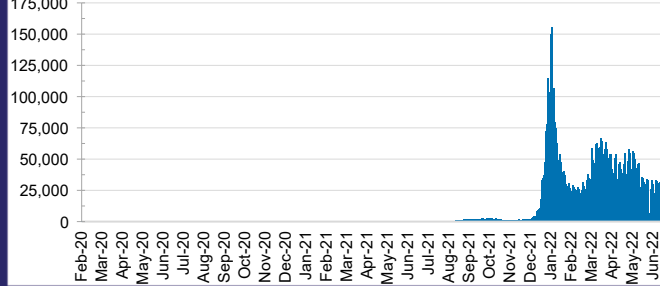


**TOTAL TESTS
REPORTED**

ACT	NSW	NT	QLD
1,186,201	32,738,621	803,452	7,899,983

SA	TAS	VIC	WA
5,103,355	708,160	21,418,319	4,109,200

DAILY NUMBER OF REPORTED CASES

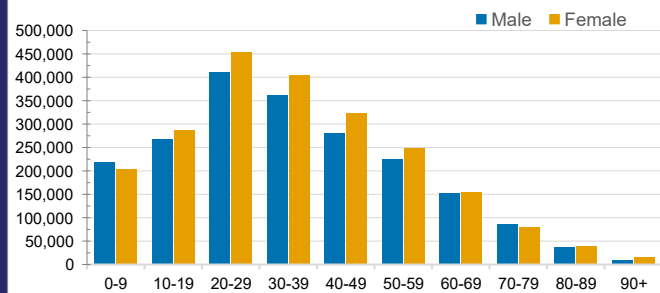


CASES IN AGED CARE SERVICES

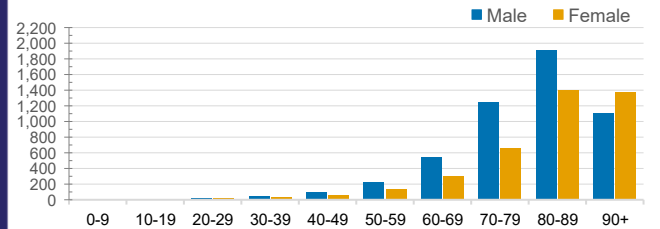
Confirmed Cases	Australia	ACT	NSW	NT	QLD	SA	TAS	VIC	WA
Residential Care Recipients	58908 (2873)	748 (37)	20021 (956)	135 (6)	9541 (361)	4681 (226)	1315 (23)	17698 (1098)	4769 (166)
In Home Care Recipients	44,887	812	15,844	173	8,483	4,256	719	9,633	4,967

Cases in care recipients (deaths)

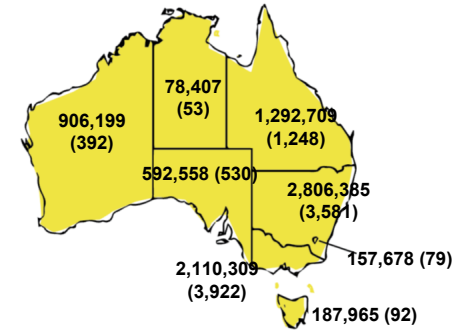
CASES BY AGE GROUP AND SEX



DEATHS BY AGE GROUP AND SEX

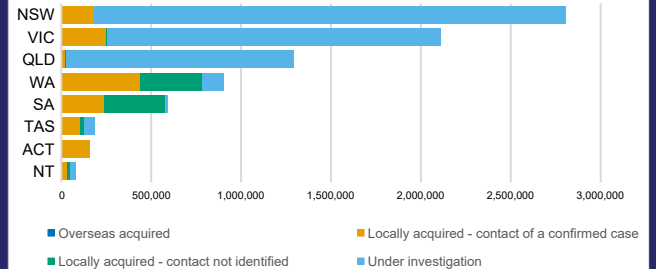


CASES (DEATHS) BY STATE AND TERRITORIES



CASES BY SOURCE OF INFECTION

Australia (% of all confirmed cases)



PUBLIC HEALTH RESPONSE MEASURE

Proportion of total cases under investigation

