



**CURRENT STATUS OF CONFIRMED CASES**



**163**

CURRENT CASES  
INTENSIVE CARE UNITS (ICU)



ACT	NSW	NT	QLD	SA	TAS	VIC	WA
2	65	0	32	11	4	33	16

**5,245**

CURRENT CASES  
ADMITTED TO HOSPITALS



ACT	NSW	NT	QLD	SA	TAS	VIC	WA
149	2,282	74	955	339	176	852	418

**76,038,523**

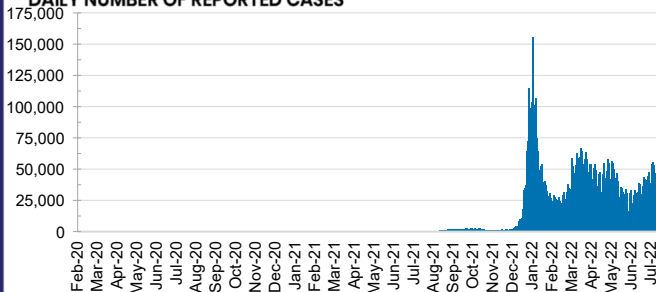
TOTAL TESTS  
REPORTED



ACT	NSW	NT	QLD
1,257,477	33,640,810	817,717	8,112,255

SA	TAS	VIC	WA
5,342,372	742,389	21,796,546	4,328,957

**DAILY NUMBER OF REPORTED CASES**

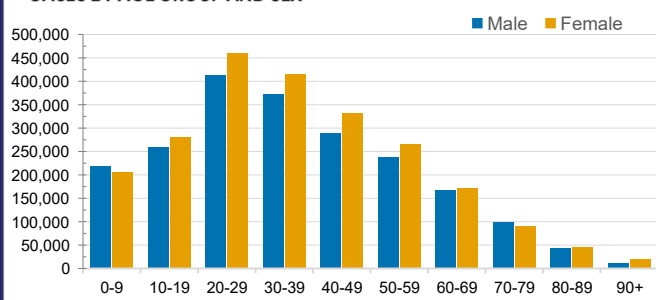


**CASES IN AGED CARE SERVICES**

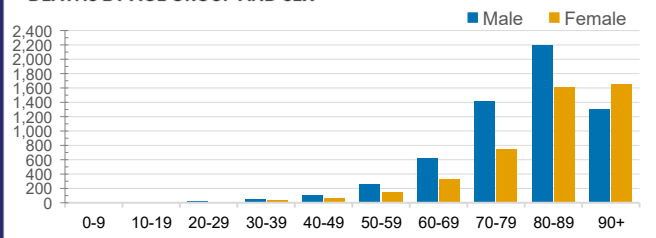
Confirmed Cases	Australia	ACT	NSW	NT	QLD	SA	TAS	VIC	WA
Residential Care Recipients	76562 (3363)	977 (42)	25512 (1146)	261 (7)	(475)	6042 (266)	1883 (34)	22321 (1185)	6306 (208)
In Home Care Recipients	54,140	917	18,710	243	11,048	5,194	922	11,524	5,582

Cases in care recipients (deaths)

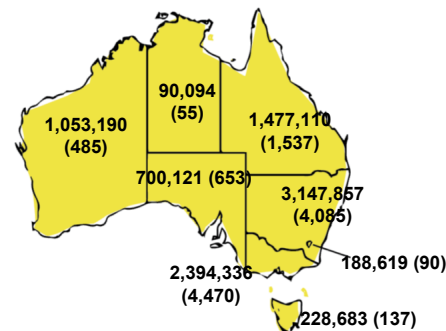
**CASES BY AGE GROUP AND SEX**



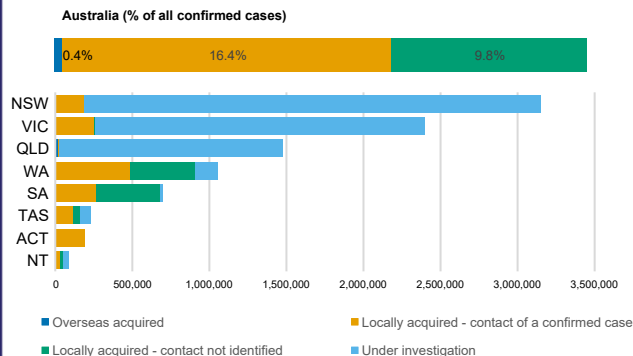
**DEATHS BY AGE GROUP AND SEX**



**CASES (DEATHS) BY STATE AND TERRITORIES**



**CASES BY SOURCE OF INFECTION**



**PUBLIC HEALTH RESPONSE MEASURE**

