



### CURRENT STATUS OF CONFIRMED CASES

9,235,014

Total cases

11,387

Total deaths

373,868

Active cases

145

CURRENT CASES  
INTENSIVE CARE UNITS (ICU)



ACT	NSW	NT	QLD	SA	TAS	VIC	WA
1	56	1	26	8	3	33	17

5,364

CURRENT CASES  
ADMITTED TO HOSPITALS



ACT	NSW	NT	QLD	SA	TAS	VIC	WA
141	2,275	76	1,023	365	170	872	442

75,942,265

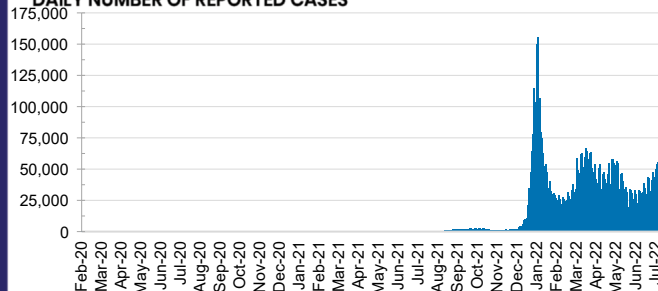
TOTAL TESTS  
REPORTED



ACT	NSW	NT	QLD
1,254,856	33,597,975	817,066	8,102,006

SA	TAS	VIC	WA
5,330,352	740,668	21,779,197	4,320,145

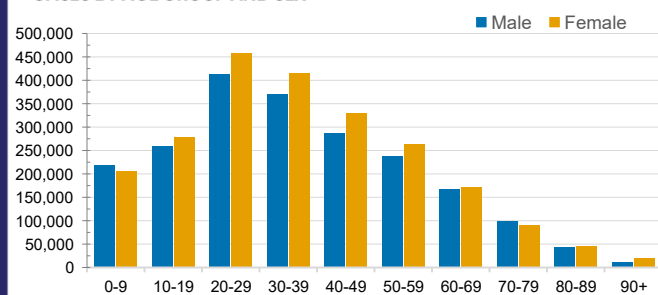
### DAILY NUMBER OF REPORTED CASES



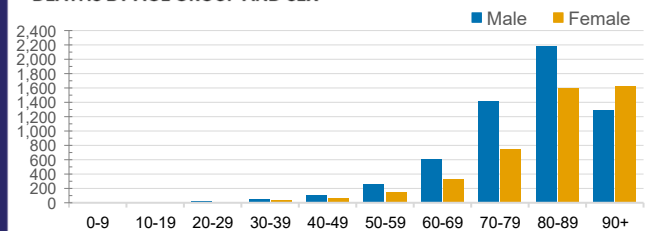
### CASES IN AGED CARE SERVICES

Confirmed Cases	Australia	ACT	NSW	NT	QLD	SA	TAS	VIC	WA
Residential Care Recipients	75642 (3327)	959 (42)	25168 (1137)	251 (6)	13088 (464)	6000 (263)	1857 (34)	22046 (1176)	6273 (205)
In Home Care Recipients	53,668	911	18,505	237	10,902	5,154	906	11,409	5,644
Cases in care recipients (deaths)									

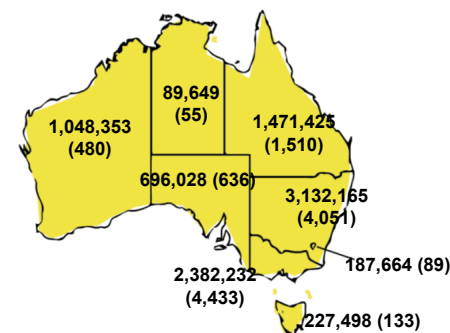
### CASES BY AGE GROUP AND SEX



### DEATHS BY AGE GROUP AND SEX

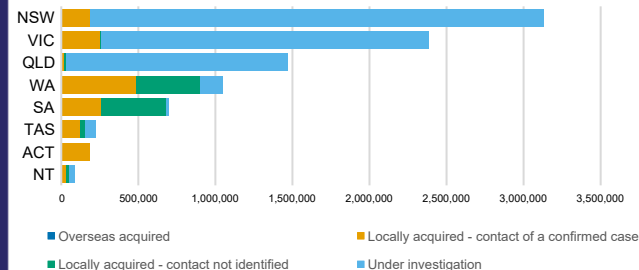


### CASES (DEATHS) BY STATE AND TERRITORIES



### CASES BY SOURCE OF INFECTION

Australia (% of all confirmed cases)



### PUBLIC HEALTH RESPONSE MEASURE

Proportion of total cases under investigation

