



CURRENT STATUS OF CONFIRMED CASES



165



**CURRENT CASES
INTENSIVE CARE UNITS (ICU)**

ACT	NSW	NT	QLD	SA	TAS	VIC	WA
1	66	1	31	7	3	39	17



5,571

**CURRENT CASES
ADMITTED TO HOSPITALS**

ACT	NSW	NT	QLD	SA	TAS	VIC	WA
151	2,344	71	1,123	379	177	869	457

75,845,385

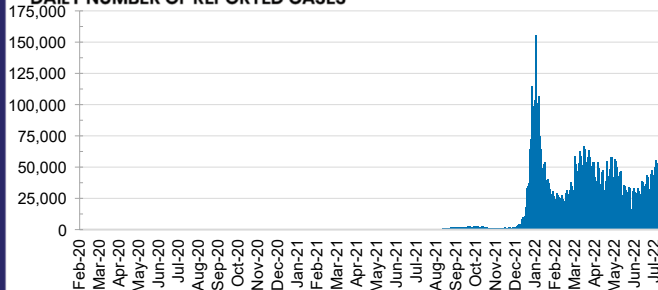


**TOTAL TESTS
REPORTED**

ACT	NSW	NT	QLD
1,251,882	33,555,582	816,236	8,091,887

SA	TAS	VIC	WA
5,318,499	738,908	21,760,337	4,312,054

DAILY NUMBER OF REPORTED CASES

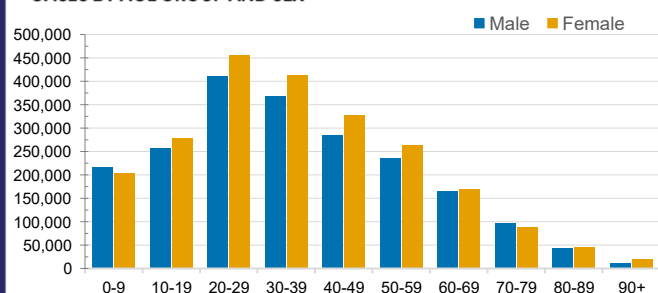


CASES IN AGED CARE SERVICES

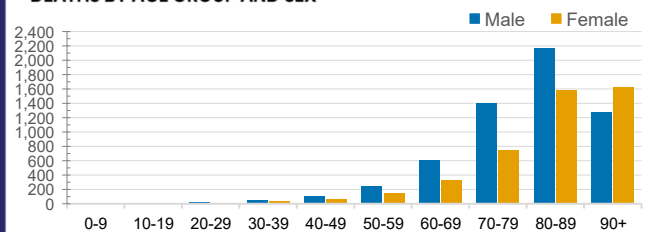
Confirmed Cases	Australia	ACT	NSW	NT	QLD	SA	TAS	VIC	WA
Residential Care Recipients	74441 (3281)	938 (41)	24745 (1123)	238 (6)	12918 (459)	5802 (254)	1815 (32)	21772 (1170)	6213 (196)
In Home Care Recipients	52,953	901	18,299	229	10,652	5,051	895	11,314	5,612

Cases in care recipients (deaths)

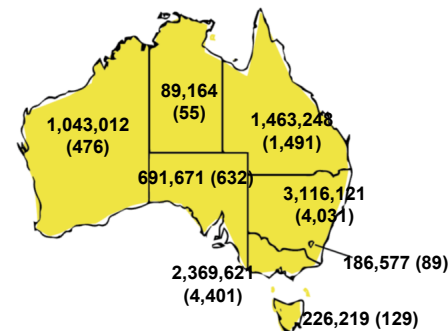
CASES BY AGE GROUP AND SEX



DEATHS BY AGE GROUP AND SEX

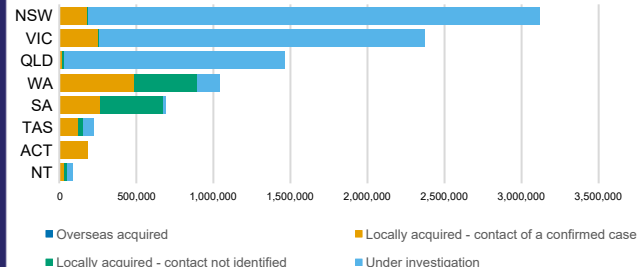


CASES (DEATHS) BY STATE AND TERRITORIES



CASES BY SOURCE OF INFECTION

Australia (% of all confirmed cases)



PUBLIC HEALTH RESPONSE MEASURE

Proportion of total cases under investigation

