



CURRENT STATUS OF CONFIRMED CASES

9,139,047 **11,200** **377,550**

Total cases Total deaths Active cases

160

CURRENT CASES
INTENSIVE CARE UNITS (ICU)



ACT	NSW	NT	QLD	SA	TAS	VIC	WA
1	58	1	28	11	2	35	24

5,433

CURRENT CASES
ADMITTED TO HOSPITALS



ACT	NSW	NT	QLD	SA	TAS	VIC	WA
162	2,329	64	1,024	384	183	855	432

75,775,274

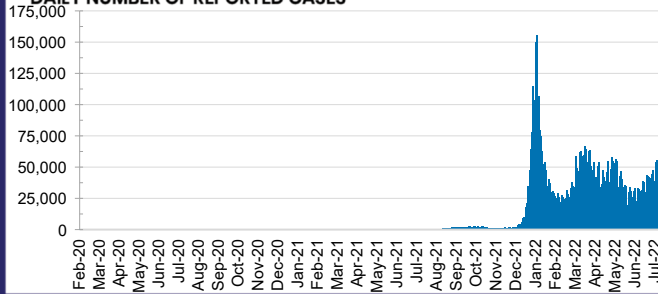
TOTAL TESTS
REPORTED



ACT	NSW	NT	QLD
1,248,805	33,527,421	815,520	8,085,706

SA	TAS	VIC	WA
5,310,162	737,671	21,748,328	4,301,661

DAILY NUMBER OF REPORTED CASES

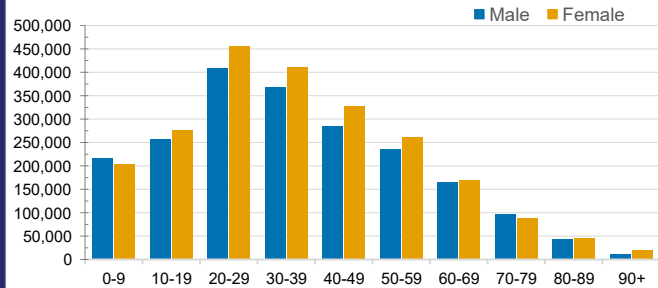


CASES IN AGED CARE SERVICES

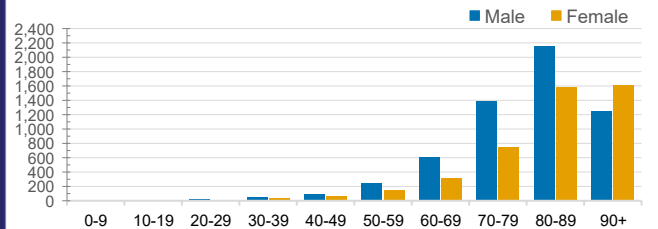
Confirmed Cases	Australia	ACT	NSW	NT	QLD	SA	TAS	VIC	WA
Residential Care Recipients	72858 (3243)	916 (41)	24244 (1114)	220 (6)	12475 (445)	5715 (251)	1770 (29)	21407 (1165)	6111 (192)
In Home Care Recipients	52,328	883	18,126	228	10,441	5,002	874	11,196	5,578

Cases in care recipients (deaths)

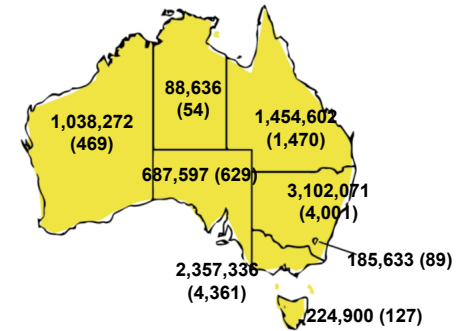
CASES BY AGE GROUP AND SEX



DEATHS BY AGE GROUP AND SEX

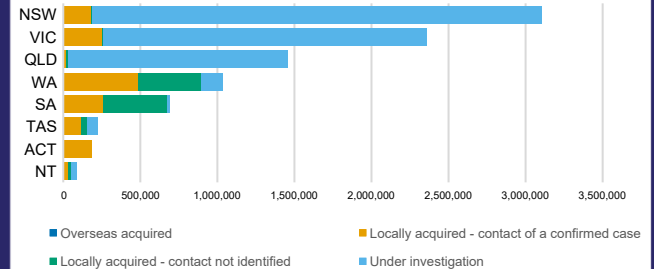


CASES (DEATHS) BY STATE AND TERRITORIES



CASES BY SOURCE OF INFECTION

Australia (% of all confirmed cases)



PUBLIC HEALTH RESPONSE MEASURE

Proportion of total cases under investigation

