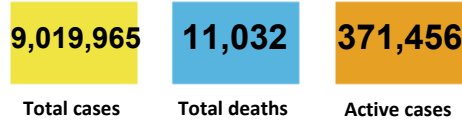




CURRENT STATUS OF CONFIRMED CASES



159



ACT	NSW	NT	QLD	SA	TAS	VIC	WA
4	55	3	26	12	2	33	24



5,307

ACT	NSW	NT	QLD	SA	TAS	VIC	WA
15	2,202	81	1.05	358	17	840	452
2			e+03		2		

75,558,764

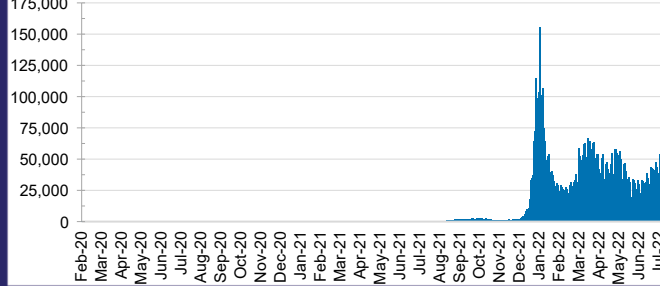


TOTAL TESTS REPORTED

ACT	NSW	NT	QLD
1,242,680	33,428,118	814,388	8,065,610

SA	TAS	VIC	WA
5,283,299	734,434	21,706,580	4,283,655

DAILY NUMBER OF REPORTED CASES

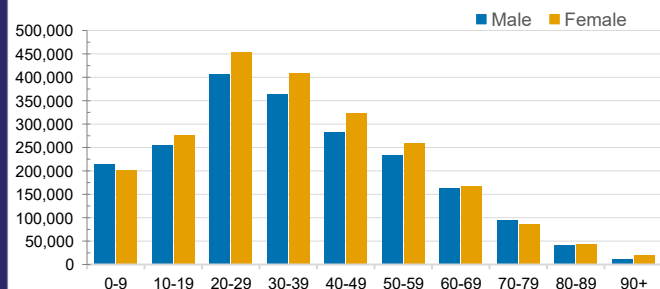


CASES IN AGED CARE SERVICES

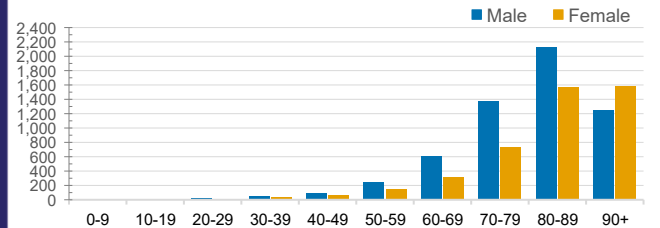
Confirmed Cases	Australia	ACT	NSW	NT	QLD	SA	TAS	VIC	WA
Residential Care Recipients	71848 (3218)	909 (41)	23882 (1102)	220 (6)	12333 (437)	5545 (254)	1752 (28)	21144 (1161)	6063 (189)
In Home Care Recipients	51,767	875	17,973	228	10,301	4,871	865	11,117	5,537

Cases in care recipients (deaths)

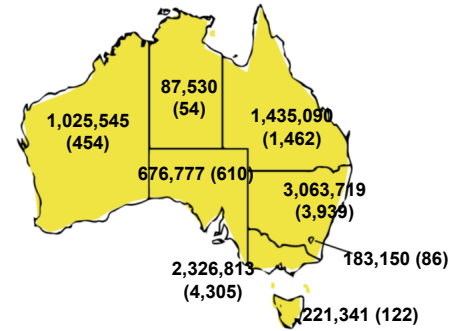
CASES BY AGE GROUP AND SEX



DEATHS BY AGE GROUP AND SEX

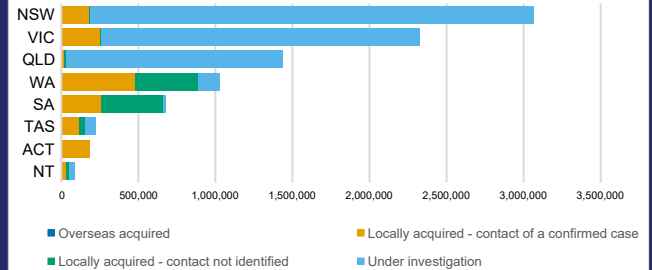


CASES (DEATHS) BY STATE AND TERRITORIES



CASES BY SOURCE OF INFECTION

Australia (% of all confirmed cases)



PUBLIC HEALTH RESPONSE MEASURE

Proportion of total cases under investigation

