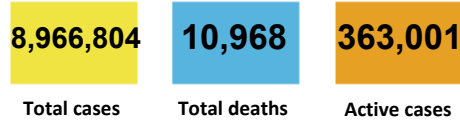




**CURRENT STATUS OF CONFIRMED CASES**



**162**



| ACT | NSW | NT | QLD | SA | TAS | VIC | WA |
|-----|-----|----|-----|----|-----|-----|----|
| 3   | 55  | 1  | 21  | 12 | 2   | 46  | 22 |

**5,360**



| ACT | NSW   | NT | QLD  | SA  | TAS | VIC | WA  |
|-----|-------|----|------|-----|-----|-----|-----|
| 16  | 2,210 | 70 | 1.03 | 354 | 19  | 875 | 459 |
| 5   |       |    | e+03 |     | 3   |     |     |

**75,465,683**

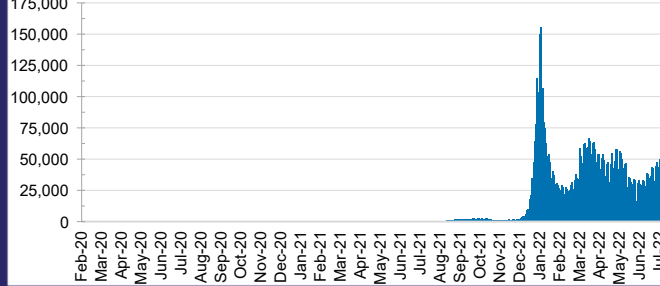


**TOTAL TESTS  
REPORTED**

| ACT       | NSW        | NT      | QLD       |
|-----------|------------|---------|-----------|
| 1,239,996 | 33,385,171 | 813,637 | 8,055,814 |

| SA        | TAS     | VIC        | WA        |
|-----------|---------|------------|-----------|
| 5,272,773 | 733,253 | 21,689,991 | 4,275,048 |

**DAILY NUMBER OF REPORTED CASES**

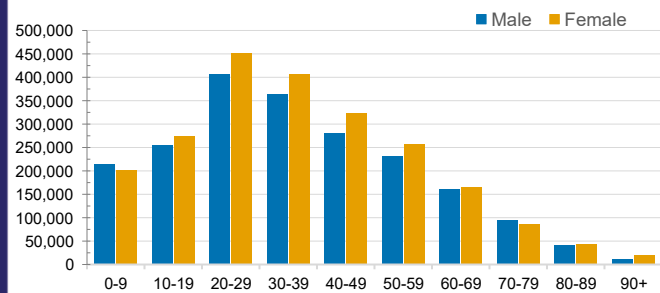


**CASES IN AGED CARE SERVICES**

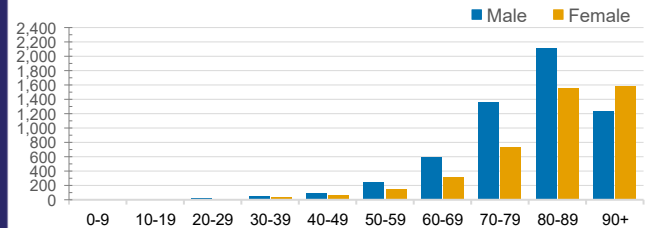
| Confirmed Cases             | Australia    | ACT      | NSW          | NT      | QLD         | SA         | TAS       | VIC          | WA         |
|-----------------------------|--------------|----------|--------------|---------|-------------|------------|-----------|--------------|------------|
| Residential Care Recipients | 71048 (3197) | 895 (40) | 23603 (1089) | 210 (6) | 12166 (434) | 5448 (252) | 1716 (28) | 21053 (1162) | 5957 (186) |
| In Home Care Recipients     | 51,179       | 867      | 17,804       | 222     | 10,139      | 4,803      | 848       | 11,017       | 5,479      |

Cases in care recipients (deaths)

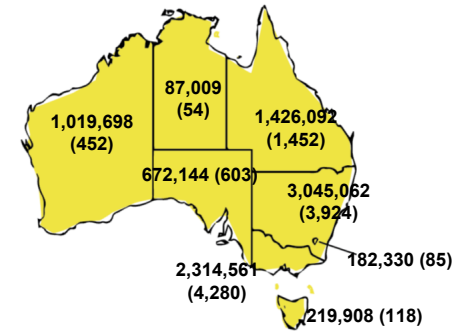
**CASES BY AGE GROUP AND SEX**



**DEATHS BY AGE GROUP AND SEX**

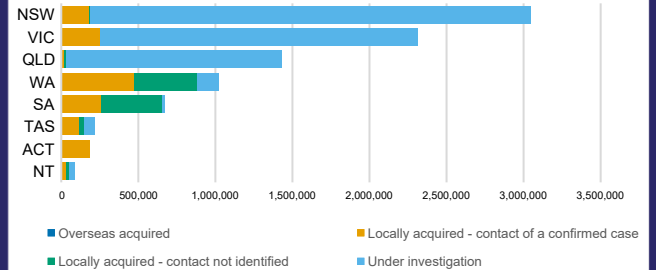


**CASES (DEATHS) BY STATE AND TERRITORIES**



**CASES BY SOURCE OF INFECTION**

Australia (% of all confirmed cases)



**PUBLIC HEALTH RESPONSE MEASURE**

Proportion of total cases under investigation

