



**CURRENT STATUS OF CONFIRMED CASES**



**169**



ACT	NSW	NT	QLD	SA	TAS	VIC	WA
4	63	1	21	11	2	45	22

**5,357**



ACT	NSW	NT	QLD	SA	TAS	VIC	WA
16	2,236	68	1.03	323	17	906	457
0			e+03		3		

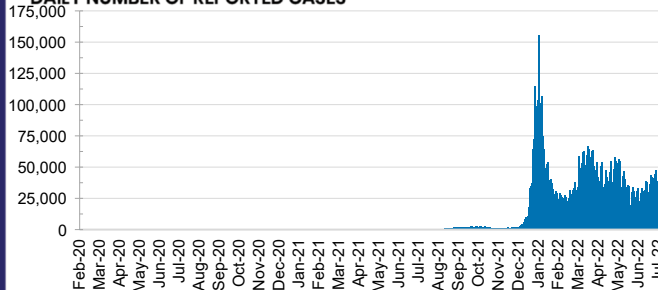
**75,373,738**



ACT	NSW	NT	QLD
1,237,154	33,346,848	812,933	8,044,994

SA	TAS	VIC	WA
5,261,108	731,729	21,673,604	4,265,368

**DAILY NUMBER OF REPORTED CASES**

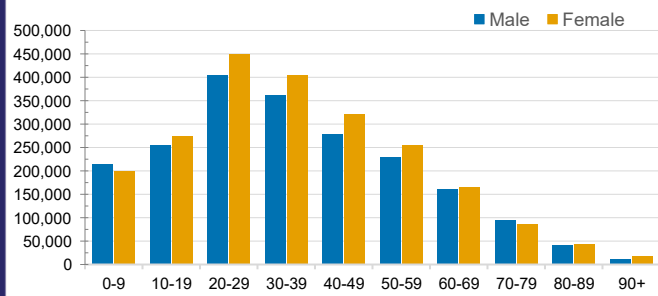


**CASES IN AGED CARE SERVICES**

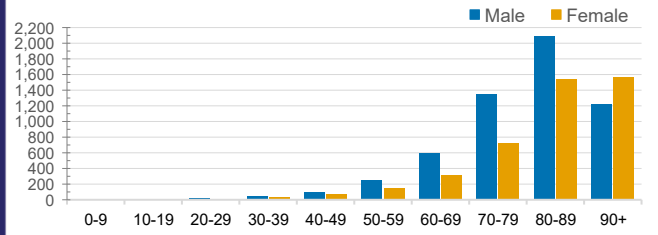
Confirmed Cases	Australia	ACT	NSW	NT	QLD	SA	TAS	VIC	WA
Residential Care Recipients	69977 (3176)	865 (39)	23366 (1082)	210 (6)	11977 (426)	5391 (252)	1709 (28)	20771 (1159)	5688 (184)
In Home Care Recipients	50,687	862	17,666	222	10,010	4,751	850	10,923	5,403

Cases in care recipients (deaths)

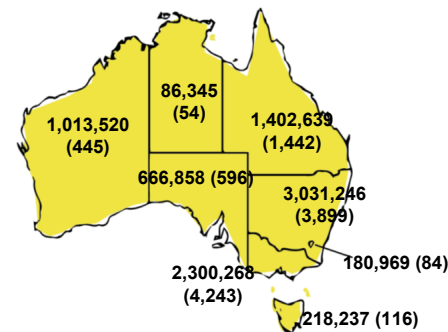
**CASES BY AGE GROUP AND SEX**



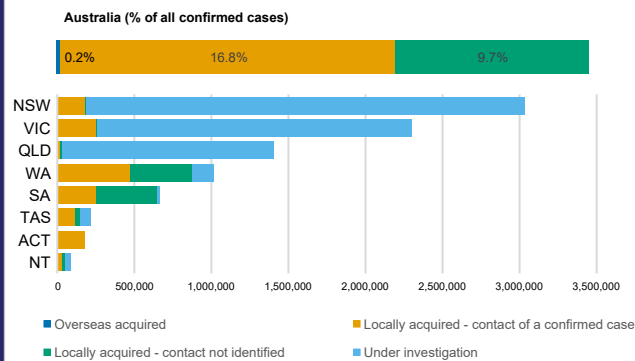
**DEATHS BY AGE GROUP AND SEX**



**CASES (DEATHS) BY STATE AND TERRITORIES**



**CASES BY SOURCE OF INFECTION**



**PUBLIC HEALTH RESPONSE MEASURE**

