



**CURRENT STATUS OF CONFIRMED CASES**



**158**



ACT	NSW	NT	QLD	SA	TAS	VIC	WA
6	60	1	24	11	2	34	20



ACT	NSW	NT	QLD	SA	TAS	VIC	WA
17	2,205	63	983	282	18	897	455
0					4		

**75,276,024**

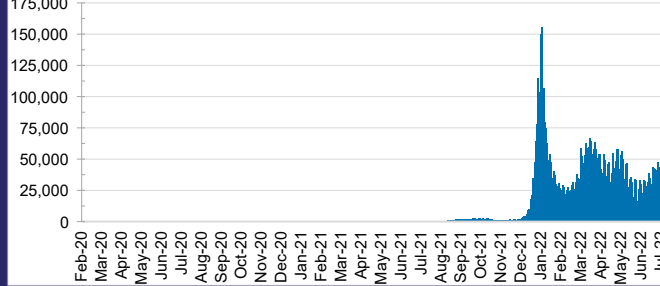


**TOTAL TESTS REPORTED**

ACT	NSW	NT	QLD
1,233,680	33,306,057	812,207	8,033,893

SA	TAS	VIC	WA
5,249,483	730,041	21,655,081	4,255,582

**DAILY NUMBER OF REPORTED CASES**

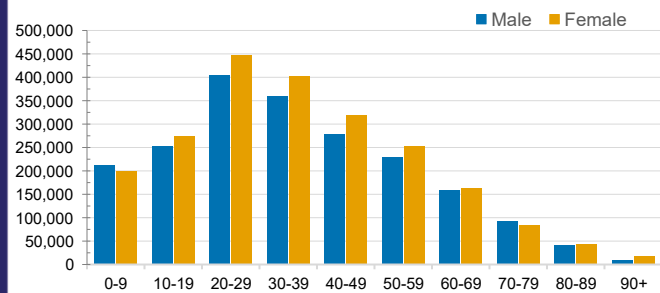


**CASES IN AGED CARE SERVICES**

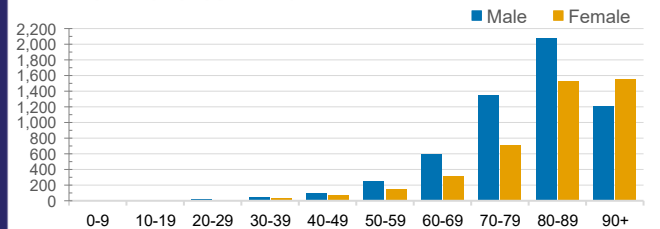
Confirmed Cases	Australia	ACT	NSW	NT	QLD	SA	TAS	VIC	WA
Residential Care Recipients	68867 (3157)	840 (38)	23057 (1073)	204 (6)	11762 (427)	5278 (250)	1667 (26)	20518 (1154)	5541 (183)
In Home Care Recipients	50,036	840	17,486	220	9,841	4,673	834	10,820	5,322

Cases in care recipients (deaths)

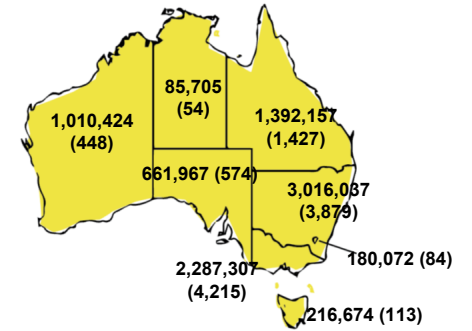
**CASES BY AGE GROUP AND SEX**



**DEATHS BY AGE GROUP AND SEX**

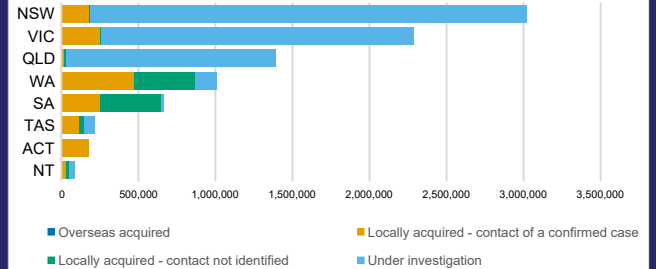


**CASES (DEATHS) BY STATE AND TERRITORIES**



**CASES BY SOURCE OF INFECTION**

Australia (% of all confirmed cases)



**PUBLIC HEALTH RESPONSE MEASURE**

Proportion of total cases under investigation

