



### CURRENT STATUS OF CONFIRMED CASES

**7,656,591**

### Total cases

9,089

### Total deaths

**205,933**

### Active cases

102



CURRENT CASES  
INTENSIVE CARE UNITS (ICU)

| ACT | NSW | NT | QLD | SA | TAS | VIC | WA |
|-----|-----|----|-----|----|-----|-----|----|
| 3   | 39  | 2  | 8   | 8  | 2   | 28  | 12 |



**CURRENT CASES  
ADMITTED TO HOSPITALS**

| ACT | NSW   | NT | QLD | SA  | TAS | VIC | WA  |
|-----|-------|----|-----|-----|-----|-----|-----|
| 93  | 1,341 | 22 | 373 | 226 | 45  | 473 | 278 |

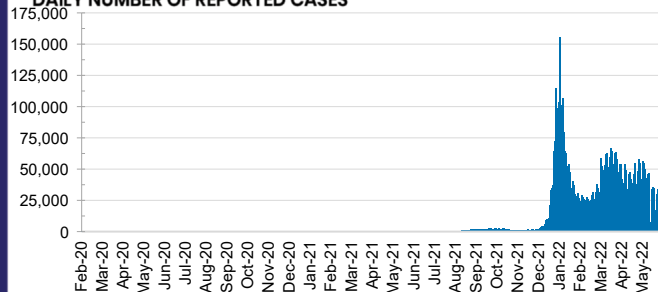
72,837,403

TOTAL TESTS  
REPORTED

| ACT       | NSW        | NT      | QLD       |
|-----------|------------|---------|-----------|
| 1,151,086 | 32,288,465 | 795,196 | 7,707,150 |

| SA        | TAS     | VIC        | WA        |
|-----------|---------|------------|-----------|
| 4,987,431 | 691,696 | 21,225,526 | 3,990,853 |

### DAILY NUMBER OF REPORTED CASES

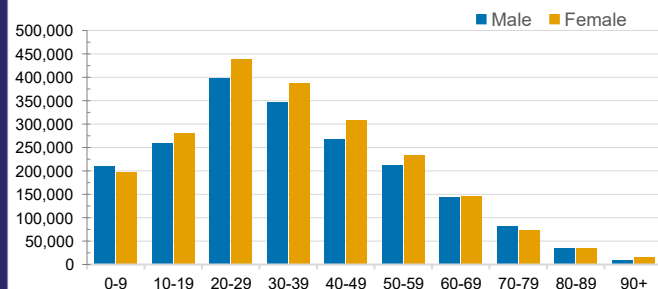


### CASES IN AGED CARE SERVICES

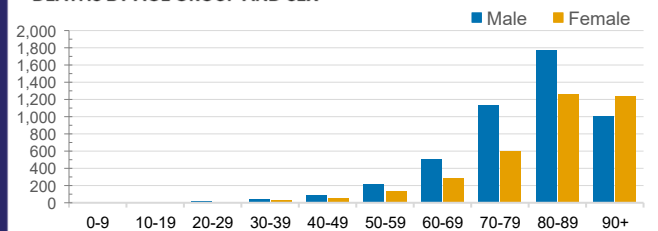
| Confirmed Cases             | Australia       | ACT      | NSW            | NT      | QLD           | SA            | TAS          | VIC             | WA            |
|-----------------------------|-----------------|----------|----------------|---------|---------------|---------------|--------------|-----------------|---------------|
| Residential Care Recipients | 52084<br>(2695) | 651 (34) | 17837<br>(877) | 108 (6) | 8006<br>(330) | 4191<br>(209) | 1167<br>(22) | 15993<br>(1072) | 4131<br>(145) |
| In Home Care Recipients     | 41,455          | 752      | 14,945         | 168     | 7,478         | 3,990         | 626          | 8,920           | 4,576         |

Cases in care recipients (deaths)

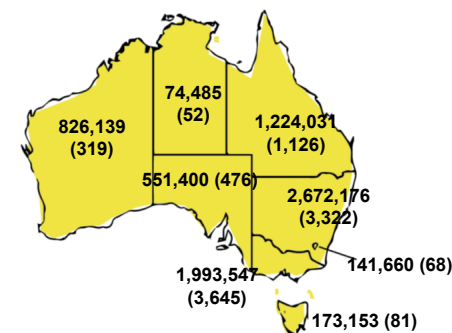
### CASES BY AGE GROUP AND SEX



### DEATHS BY AGE GROUP AND SEX

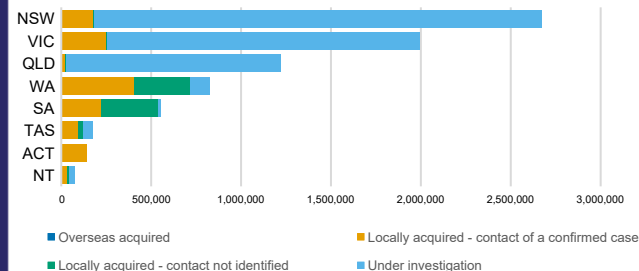


### CASES (DEATHS) BY STATE AND TERRITORIES



### CASES BY SOURCE OF INFECTION

**Australia (% of all confirmed cases)**



## PUBLIC HEALTH RESPONSE MEASURE

Proportion of total cases under investigation

