



CURRENT STATUS OF CONFIRMED CASES



131



| ACT | NSW | NT | QLD | SA | TAS | VIC | WA |
|-----|-----|----|-----|----|-----|-----|----|
| 5 | 63 | 1 | 10 | 9 | 4 | 30 | 9 |



| ACT | NSW | NT | QLD | SA | TAS | VIC | WA |
|-----|-------|----|-----|-----|-----|-----|-----|
| 13 | 2,002 | 25 | 782 | 284 | 99 | 717 | 282 |
| 6 | | | | | | | |

74,747,685

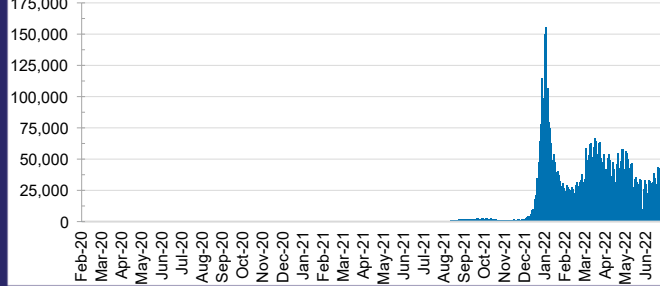


**TOTAL TESTS
REPORTED**

| ACT | NSW | NT | QLD |
|-----------|------------|---------|-----------|
| 1,280,941 | 33,052,904 | 807,443 | 7,972,568 |

| SA | TAS | VIC | WA |
|-----------|---------|------------|-----------|
| 5,182,061 | 719,901 | 21,547,278 | 4,184,589 |

DAILY NUMBER OF REPORTED CASES

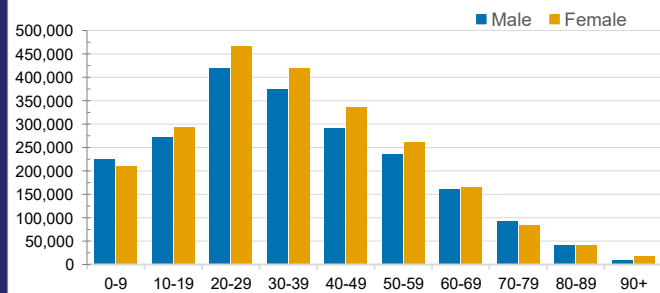


CASES IN AGED CARE SERVICES

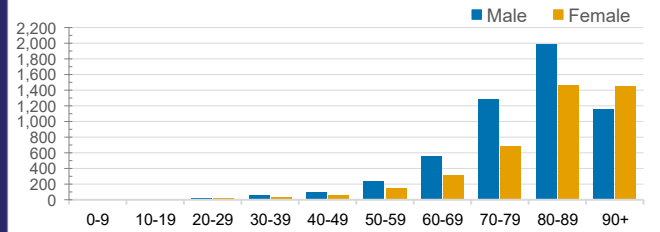
| Confirmed Cases | Australia | ACT | NSW | NT | QLD | SA | TAS | VIC | WA |
|-----------------------------|--------------|----------|--------------|---------|-------------|------------|-----------|--------------|------------|
| Residential Care Recipients | 63412 (2989) | 778 (38) | 21524 (1003) | 153 (6) | 10680 (391) | 4858 (232) | 1481 (25) | 18976 (1123) | 4962 (171) |
| In Home Care Recipients | 47,110 | 828 | 16,685 | 189 | 9,156 | 4,390 | 776 | 10,092 | 4,994 |

Cases in care recipients (deaths)

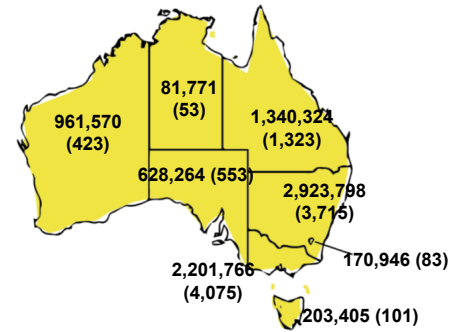
CASES BY AGE GROUP AND SEX



DEATHS BY AGE GROUP AND SEX

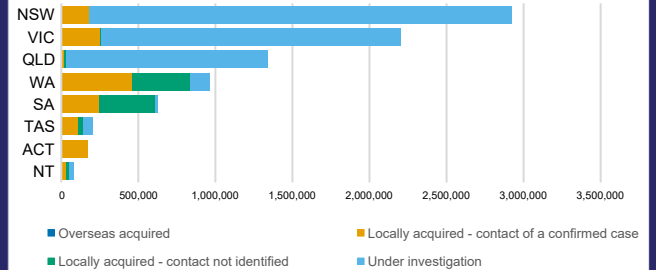


CASES (DEATHS) BY STATE AND TERRITORIES



CASES BY SOURCE OF INFECTION

Australia (% of all confirmed cases)



PUBLIC HEALTH RESPONSE MEASURE

Proportion of total cases under investigation

