



CURRENT STATUS OF CONFIRMED CASES



106



ACT	NSW	NT	QLD	SA	TAS	VIC	WA
4	41	2	15	7	4	23	10



ACT	NSW	NT	QLD	SA	TAS	VIC	WA
13	1,558	16	597	227	47	472	217

74,042,365

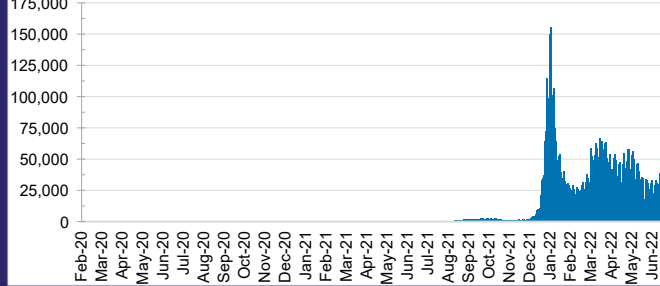


TOTAL TESTS REPORTED

ACT	NSW	NT	QLD
1,188,516	32,771,528	803,983	7,908,502

SA	TAS	VIC	WA
5,112,967	709,318	21,431,044	4,116,507

DAILY NUMBER OF REPORTED CASES

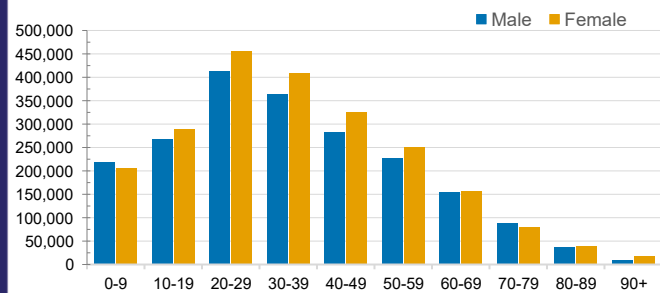


CASES IN AGED CARE SERVICES

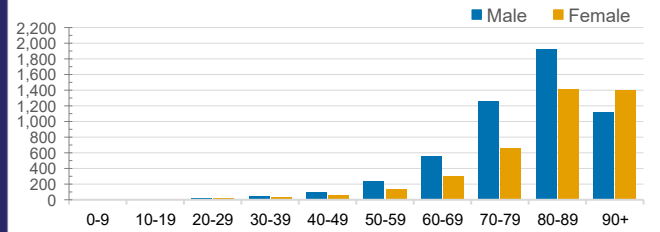
Confirmed Cases	Australia	ACT	NSW	NT	QLD	SA	TAS	VIC	WA
Residential Care Recipients	59344 (2881)	749 (38)	20106 (957)	135 (6)	9703 (366)	4697 (225)	1328 (24)	17830 (1099)	4796 (166)
In Home Care Recipients	45,047	812	15,919	174	8,534	4,255	730	9,673	4,950

Cases in care recipients (deaths)

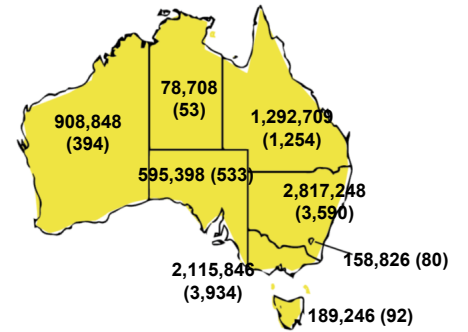
CASES BY AGE GROUP AND SEX



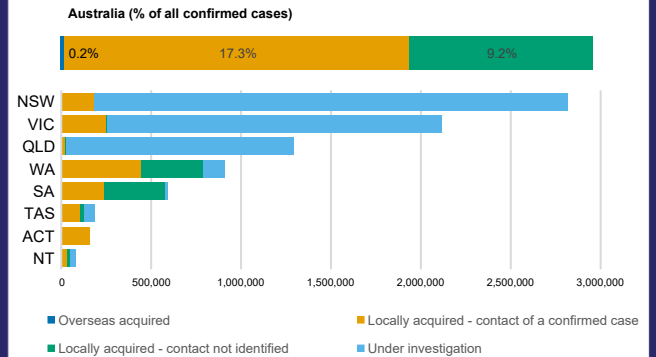
DEATHS BY AGE GROUP AND SEX



CASES (DEATHS) BY STATE AND TERRITORIES



CASES BY SOURCE OF INFECTION



PUBLIC HEALTH RESPONSE MEASURE

