



Australian Government
Operation COVID Shield

COVID-19 Vaccine Roll-out Jurisdictional Breakdowns

30 June 2022

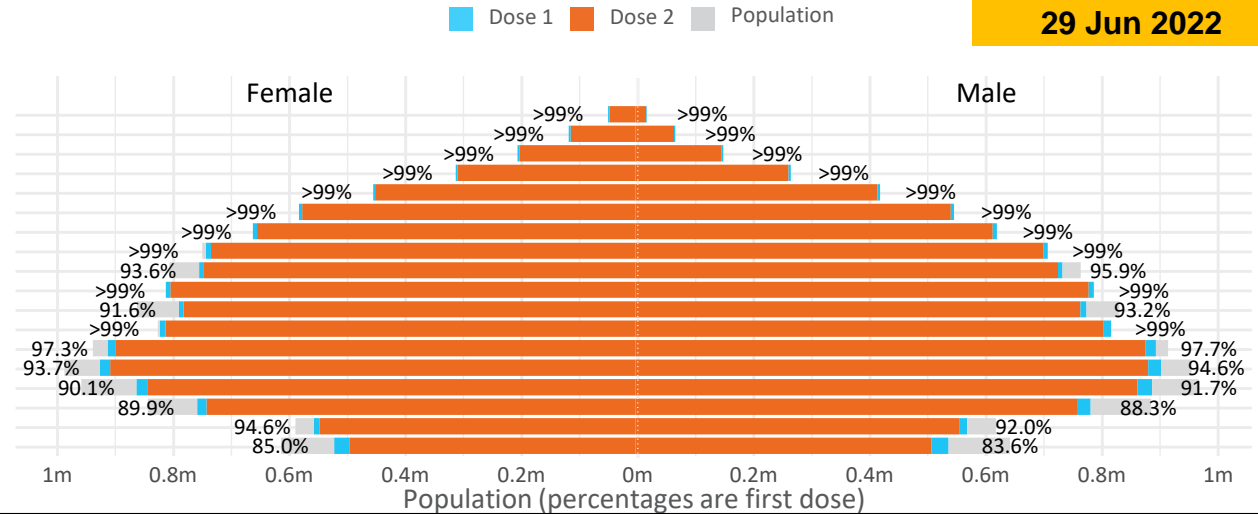
Doses by age and sex

First and second doses by age and sex

	16+	50+	12-15	5-11
Dose 1	97.53% (20,111,393 doses / 20,619,959 people)	>99% (8,928,987 doses / 8,749,703 people)	84.33% (1,049,076 doses / 1,243,990 people)	52.31% (1,190,942 doses / 2,276,638 people)
Dose 2	95.90% (19,774,825 doses / 20,619,959 people)	>99% (8,821,342 doses / 8,749,703 people)	79.80% (992,738 doses / 1,243,990 people)	39.59% (901,270 doses / 2,276,638 people)

Data as at:
29 Jun 2022

Age	Dose 1	Dose 2
95+	65,811 (>99%)	62,356 (>99%)
90-94	182,291 (>99%)	176,807 (>99%)
85-89	351,529 (>99%)	344,776 (>99%)
80-84	572,442 (>99%)	565,315 (>99%)
75-79	866,130 (>99%)	857,678 (>99%)
70-74	1,119,300 (>99%)	1,107,912 (>99%)
65-69	1,271,425 (>99%)	1,256,592 (>99%)
60-64	1,438,893 (>99%)	1,422,387 (>99%)
55-59	1,475,612 (94.9%)	1,458,920 (93.8%)
50-54	1,585,554 (>99%)	1,568,599 (>99%)
45-49	1,550,651 (92.5%)	1,532,256 (91.4%)
40-44	1,626,229 (>99%)	1,602,239 (98.9%)
35-39	1,794,041 (97.8%)	1,761,803 (96.0%)
30-34	1,819,936 (94.6%)	1,777,874 (92.4%)
25-29	1,743,983 (91.5%)	1,696,098 (89.0%)
20-24	1,531,569 (89.4%)	1,491,252 (87.1%)
16-19	1,115,997 (93.3%)	1,091,961 (91.3%)
12-15	1,049,076 (84.3%)	992,738 (79.8%)



	AUS	ACT	NSW	NT	QLD	SA	TAS	VIC	WA
16 and over - dose 1	20,111,393	353,501	6,342,657	173,901	3,874,184	1,379,133	446,081	5,175,238	2,100,431
16 and over - dose 2	19,774,825	347,753	6,244,466	169,227	3,810,430	1,349,836	437,059	5,096,705	2,069,397
16 and over - population	20,619,959*	344,037	6,565,651	190,571	4,112,707	1,440,400	440,172	5,407,574	2,114,978
16 and over % with dose 1	97.53%	>99%	96.60%	91.25%	94.20%	95.75%	>99%	95.70%	>99%
16 and over % with dose 2	95.90%	>99%	95.11%	88.80%	92.65%	93.71%	>99%	94.25%	97.84%
5 to 11 - dose 1	1,190,942	31,747	355,682	13,141	206,228	83,637	28,440	324,305	140,158
5 to 11 - dose 2	901,270	27,353	275,463	8,793	150,023	63,572	23,159	245,987	102,306
5 to 11 - population	2,276,638	39,789	716,460	24,750	478,731	148,816	45,033	578,499	244,154
5 to 11 % with dose 1	52.31%	79.79%	49.64%	53.09%	43.08%	56.20%	63.15%	56.06%	57.41%
5 to 11 % with dose 2	39.59%	68.75%	38.45%	35.53%	31.34%	42.72%	51.43%	42.52%	41.90%
12 to 15 - dose 1	1,049,076	20,122	322,510	10,738	205,529	68,213	22,855	274,185	115,498
12 to 15 - dose 2	992,738	19,564	308,035	9,691	191,927	64,425	21,738	262,281	106,891
12 to 15 - population	1,243,990	19,693	390,330	13,060	270,146	82,747	26,308	308,611	132,869
12 to 15 % with dose 1	84.33%	>99%	82.62%	82.22%	76.08%	82.44%	86.87%	88.84%	86.93%
12 to 15 % with dose 2	79.80%	>99%	78.92%	74.20%	71.05%	77.86%	82.63%	84.99%	80.45%

*National population will not equal sum of listed jurisdictions due to a small number of people counted in national population residing in some 'other' territories. Sum of state doses will not add to national total as some records are unable to be geocoded to a State or Territory. Doses sourced from Australian Immunisation Register, population from ABS ERP June 2020

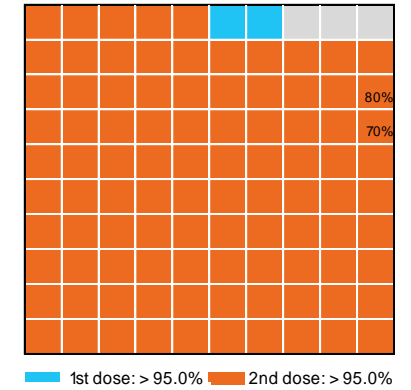
Vaccinations by State – National Summary

Data as at: 29 Jun 2022

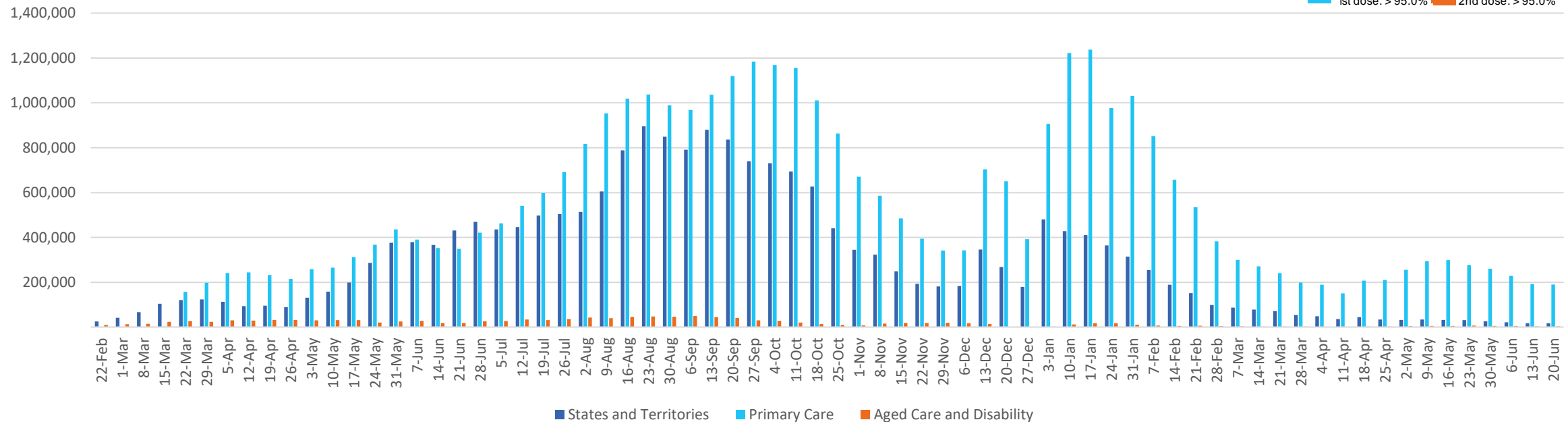
Past 7 days

	23/06/2022	24/06/2022	25/06/2022	26/06/2022	27/06/2022	28/06/2022	29/06/2022	7 day total
State and Territory	4,768	3,366	2,374	1,685	3,014	3,277	4,209	22,693
Aged Care and Disability	439	496	97	<10	688	452	377	2,550
Primary Care	40,044	35,227	9,706	3,605	30,560	35,363	32,468	186,973
Total (rounded)	45 K	39 K	12 K	5 K	34 K	39 K	37 K	212 K

Eligible population by % coverage



Doses administered by channel

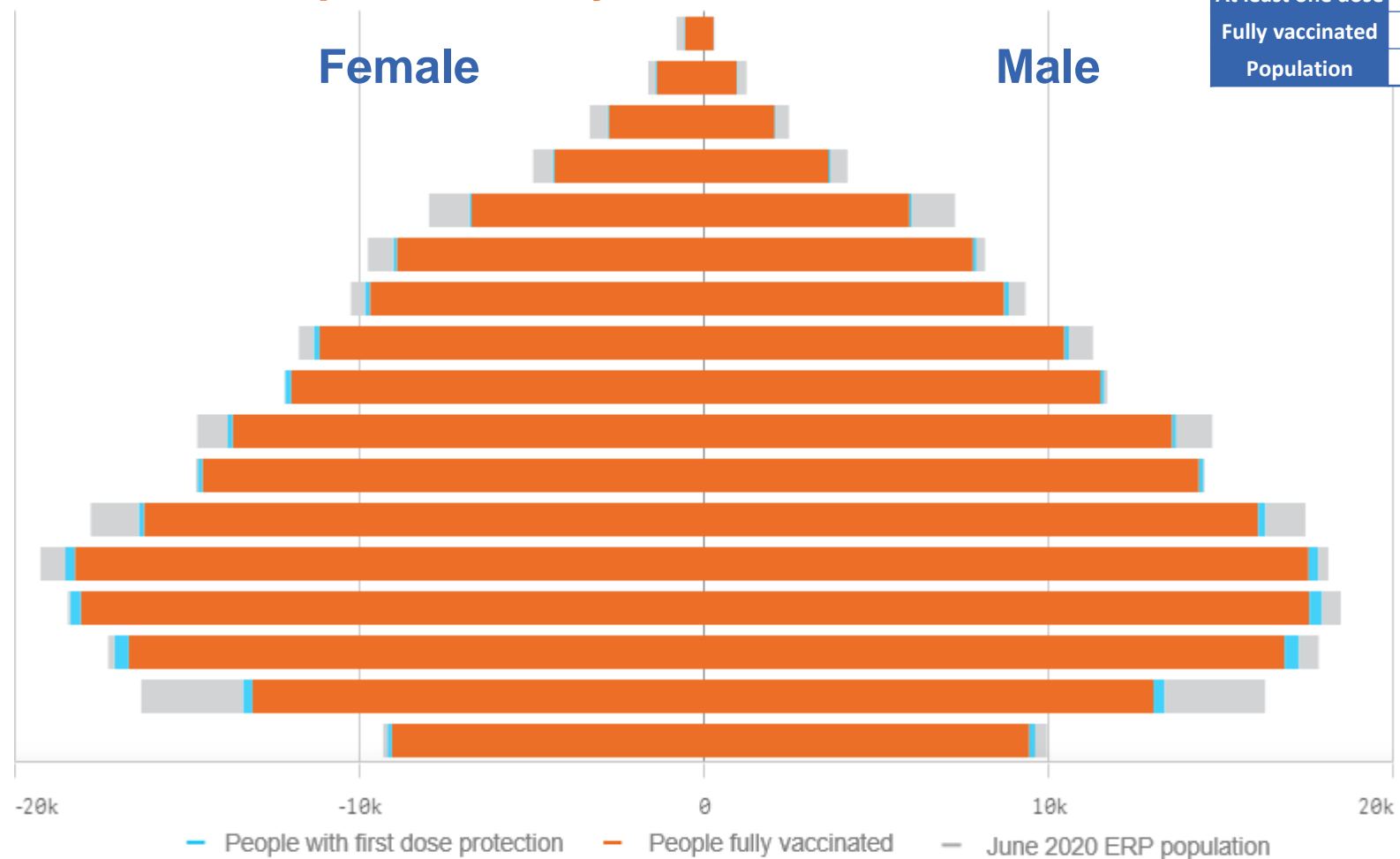


*Administration state breakdown indicates state in which a vaccine was administered and may differ to residential state. Recent weeks may be understated.

Data as at:
29 Jun 2022

Vaccinations by State or Territory of residence

Australian Capital Territory



	16+	50+	70+
At least one dose	>95% 353,501	>95% 138,173	>95% 46,092
Fully vaccinated	>95% 347,753	>95% 136,321	>95% 45,429
Population	344,037	127,802	39,946

Age	At least one dose	Fully vaccinated
95+	>95%	>95%
90-94	>95%	>95%
85-89	>95%	>95%
80-84	>95%	>95%
75-79	>95%	>95%
70-74	>95%	>95%
65-69	>95%	>95%
60-64	>95%	>95%
55-59	>95%	>95%
50-54	>95%	>95%
45-49	>95%	>95%
40-44	>95%	>95%
35-39	>95%	>95%
30-34	>95%	>95%
25-29	>95%	>95%
20-24	82.54%	80.49%
16-19	>95%	>95%

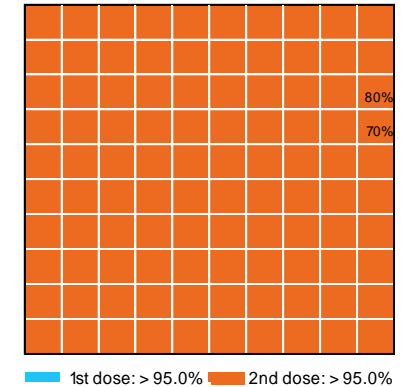
Vaccinations by State – Australian Capital Territory

Data as at:
29 Jun 2022

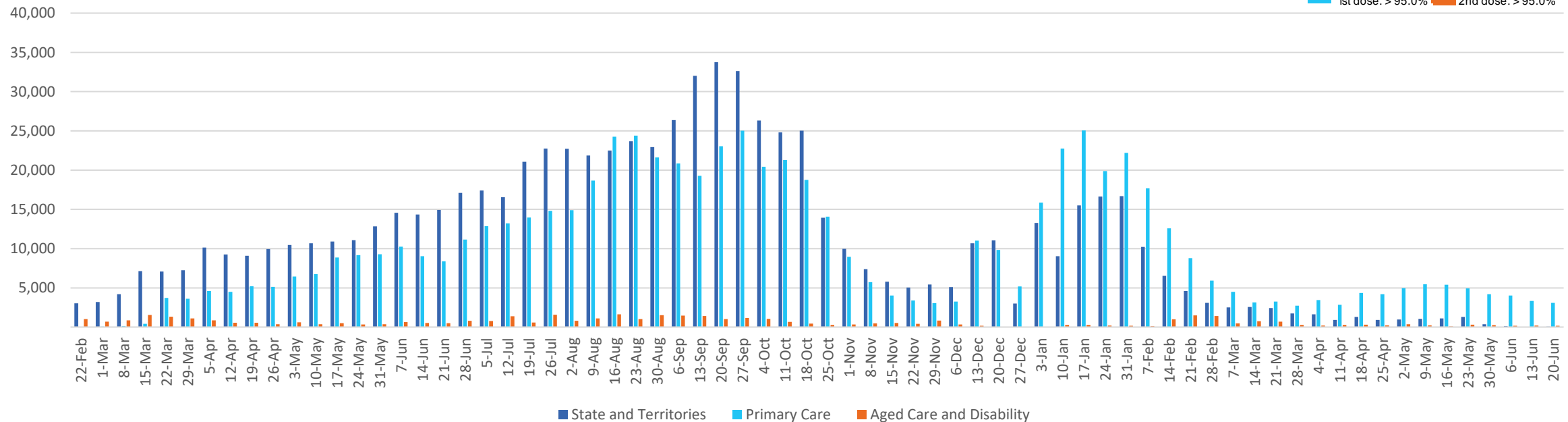
Past 7 days

	23/06/2022	24/06/2022	25/06/2022	26/06/2022	27/06/2022	28/06/2022	29/06/2022	7 day total
State and Territory	521	532	155	55	545	559	541	2,908
Aged Care and Disability	16	59	<10	<10	<10	11	<10	91
Primary Care	727	559	199	45	587	629	545	3,291
Total (rounded)	1 K	1 K	0 K	0 K	1 K	1 K	1 K	6 K

Eligible population by % coverage



Doses administered by channel



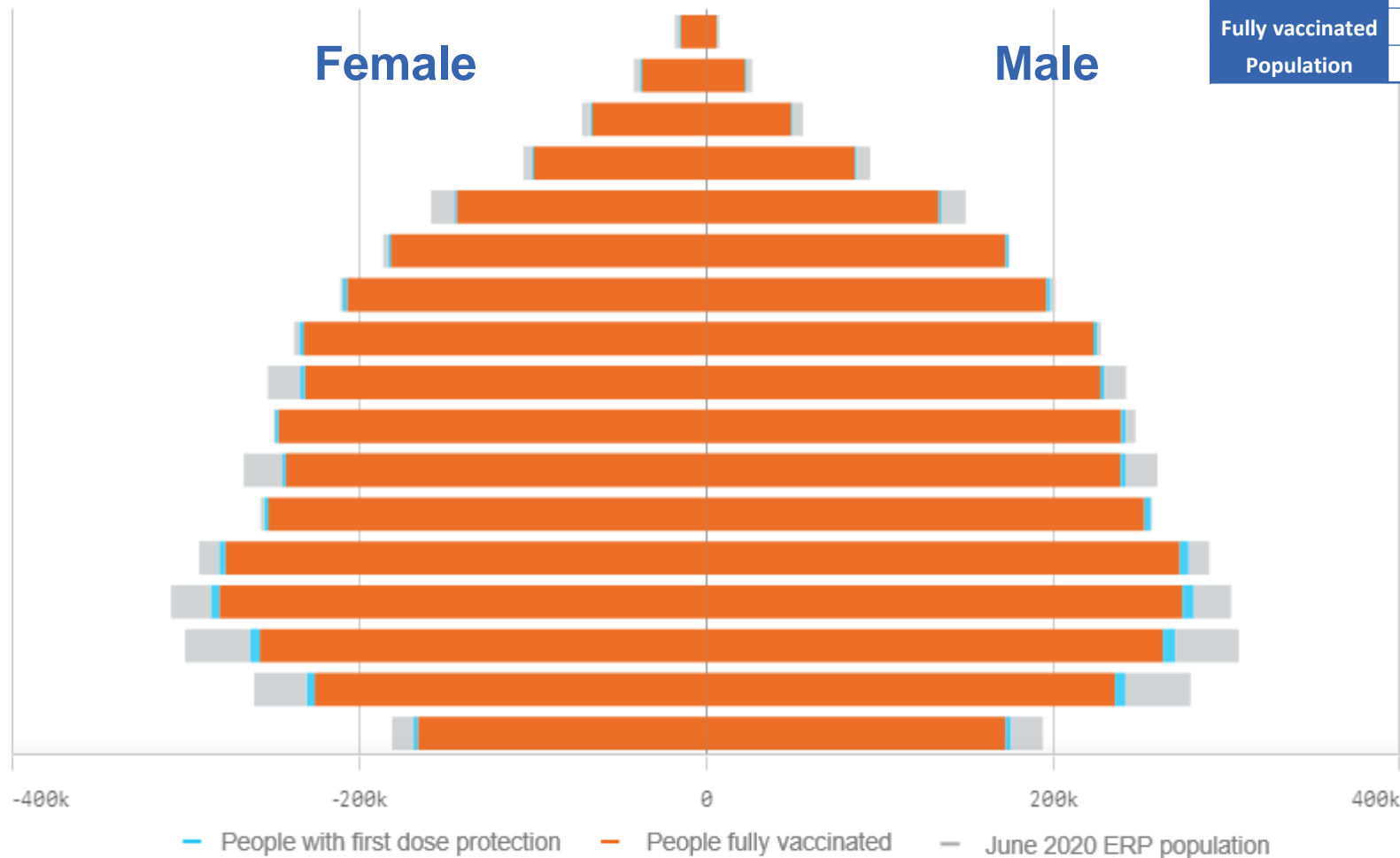
*Administration state breakdown indicates state in which a vaccine was administered and may differ to residential state. Recent weeks may be understated.

Data as at:
29 Jun 2022

Vaccinations by State or Territory of residence

New South Wales

	16+	50+	70+
At least one dose	>95% 6,342,657	>95% 2,854,614	>95% 1,027,851
Fully vaccinated	>95% 6,244,466	>95% 2,820,635	>95% 1,014,462
Population	6,565,651	2,807,793	962,606



Age	At least one dose	Fully vaccinated
95+	>95%	>95%
90-94	>95%	>95%
85-89	>95%	>95%
80-84	>95%	>95%
75-79	>95%	>95%
70-74	>95%	>95%
65-69	>95%	>95%
60-64	>95%	>95%
55-59	93.85%	92.78%
50-54	>95%	>95%
45-49	92.43%	91.44%
40-44	>95%	>95%
35-39	>95%	94.69%
30-34	93.22%	91.21%
25-29	88.40%	86.11%
20-24	87.82%	85.73%
16-19	91.88%	90.39%

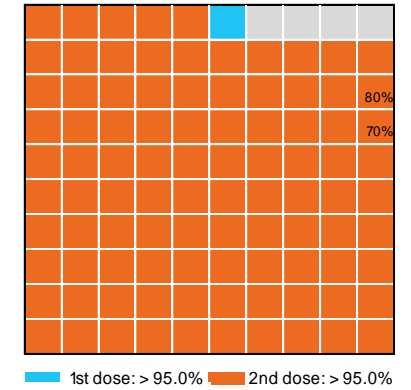
Vaccinations by State – New South Wales

Data as at:
29 Jun 2022

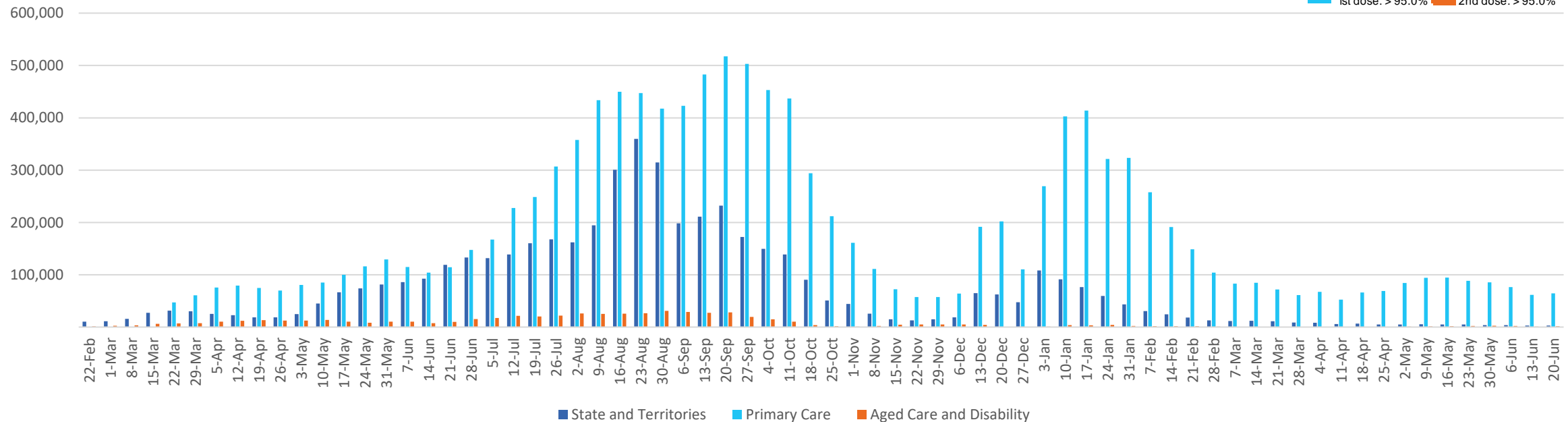
Past 7 days

	23/06/2022	24/06/2022	25/06/2022	26/06/2022	27/06/2022	28/06/2022	29/06/2022	7 day total
State and Territory	1,233	357	376	775	503	150	857	4,251
Aged Care and Disability	190	238	32	<10	398	115	157	1,130
Primary Care	13,954	12,118	3,286	1,134	10,818	12,304	11,337	64,951
Total (rounded)	15 K	13 K	4 K	2 K	12 K	13 K	12 K	70 K

Eligible population by % coverage



Doses administered by channel

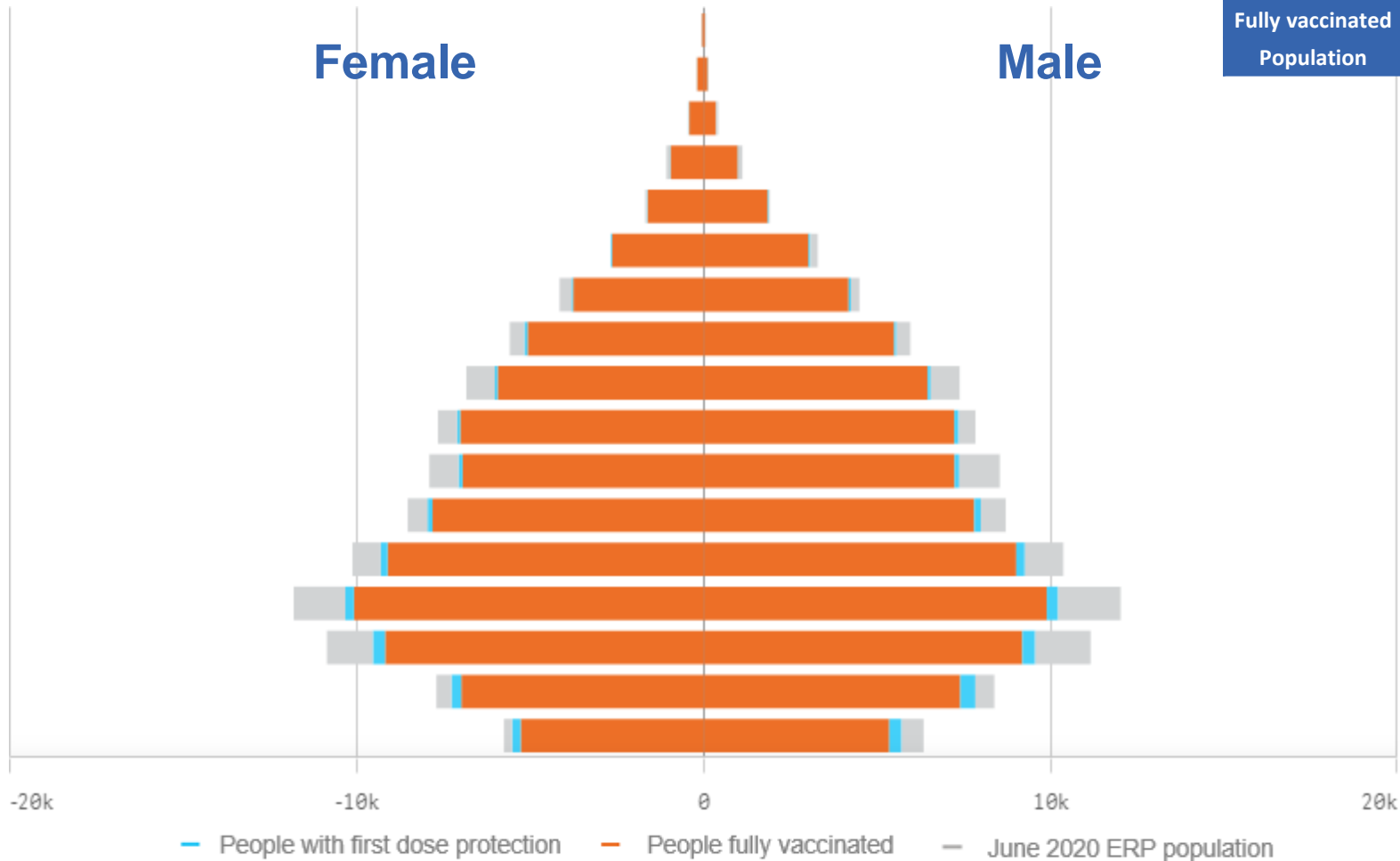


*Administration state breakdown indicates state in which a vaccine was administered and may differ to residential state. Recent weeks may be understated.

Data as at:
29 Jun 2022

Vaccinations by State or Territory of residence

Northern Territory



	16+	50+	70+
At least one dose	91.25% 173,901	93.74% 58,380	>95% 12,481
Fully vaccinated	88.80% 169,227	92.32% 57,497	>95% 12,267
Population	190,571	62,280	12,343

Age	At least one dose	Fully vaccinated
95+	>95%	94.85%
90-94	>95%	>95%
85-89	>95%	>95%
80-84	>95%	>95%
75-79	>95%	>95%
70-74	>95%	>95%
65-69	93.21%	91.94%
60-64	93.08%	91.66%
55-59	88.45%	87.26%
50-54	93.50%	92.04%
45-49	87.94%	86.34%
40-44	92.84%	90.81%
35-39	90.97%	88.67%
30-34	86.83%	84.26%
25-29	87.44%	84.00%
20-24	94.18%	89.67%
16-19	92.93%	87.92%

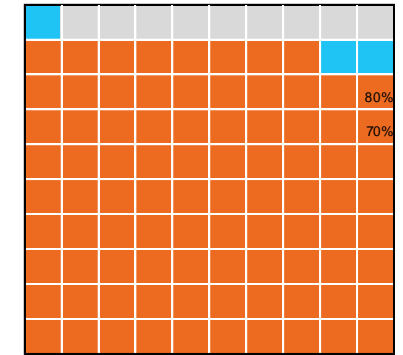
Vaccinations by State – Northern Territory

Data as at: 29 Jun 2022

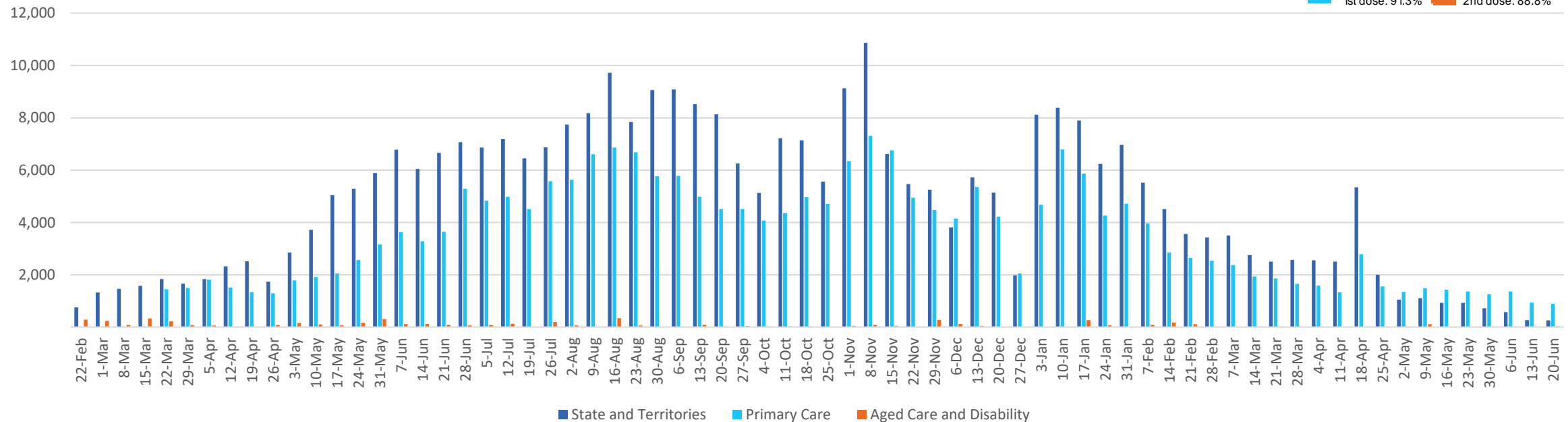
Past 7 days

	23/06/2022	24/06/2022	25/06/2022	26/06/2022	27/06/2022	28/06/2022	29/06/2022	7 day total
State and Territory	50	59	45	<10	62	57	71	350
Aged Care and Disability	<10	<10	<10	<10	<10	<10	<10	<10
Primary Care	170	221	22	<10	124	213	199	956
Total (rounded)	0 K	0 K	0 K	0 K	0 K	0 K	0 K	1 K

Eligible population by % coverage



Doses administered by channel

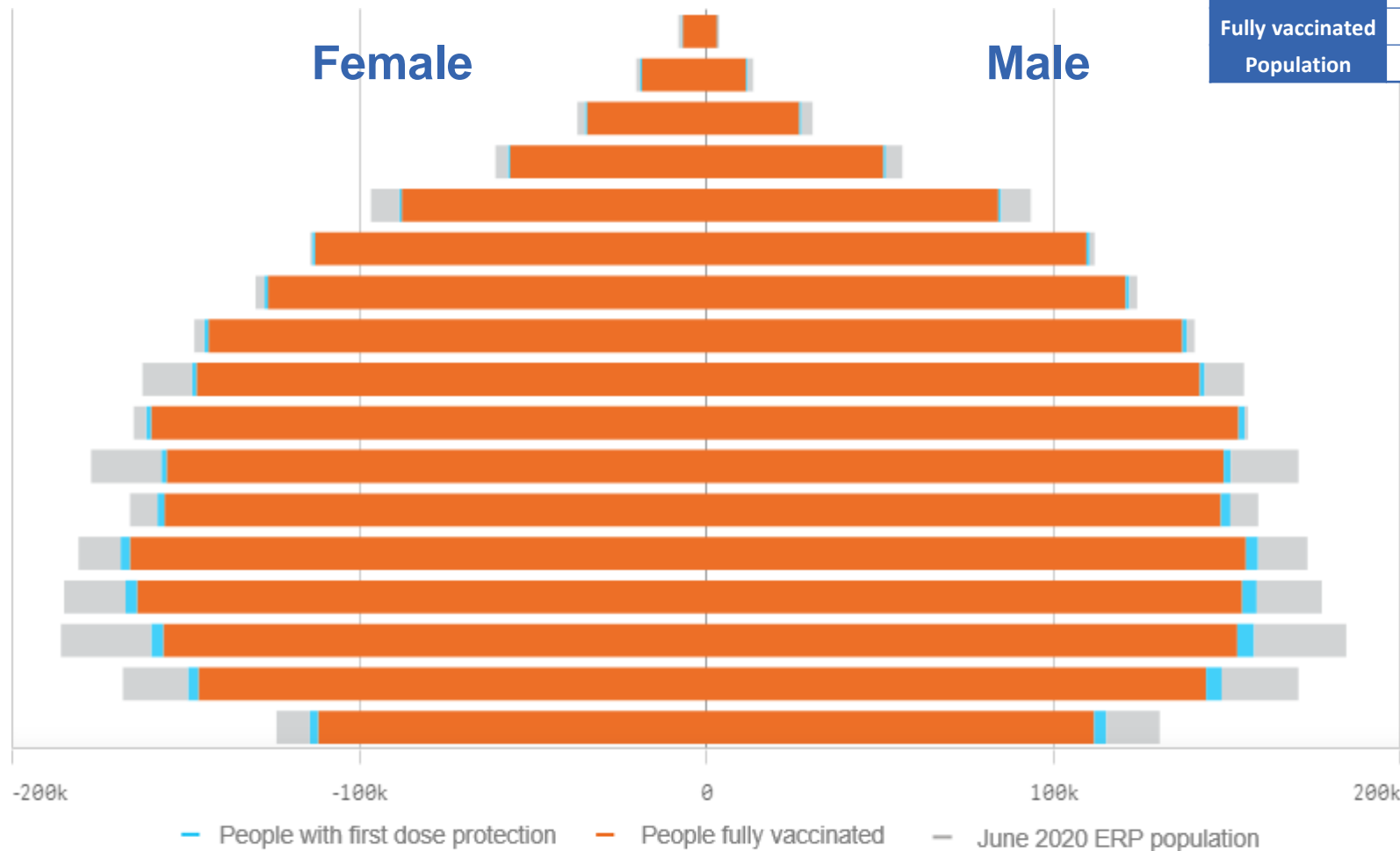


*Administration state breakdown indicates state in which a vaccine was administered and may differ to residential state. Recent weeks may be understated.

Data as at:
29 Jun 2022

Vaccinations by State or Territory of residence

Queensland



	16+	50+	70+
At least one dose	94.20% 3,874,184	>95% 1,752,603	>95% 610,707
Fully vaccinated	92.65% 3,810,430	>95% 1,734,282	>95% 603,285
Population	4,112,707	1,758,855	577,767

Age	At least one dose	Fully vaccinated
95+	>95%	>95%
90-94	>95%	>95%
85-89	>95%	>95%
80-84	>95%	>95%
75-79	>95%	>95%
70-74	>95%	>95%
65-69	>95%	>95%
60-64	>95%	>95%
55-59	92.01%	91.12%
50-54	>95%	>95%
45-49	88.66%	87.60%
40-44	>95%	93.69%
35-39	92.74%	90.93%
30-34	90.24%	88.08%
25-29	86.18%	83.81%
20-24	88.16%	85.86%
16-19	90.26%	87.91%

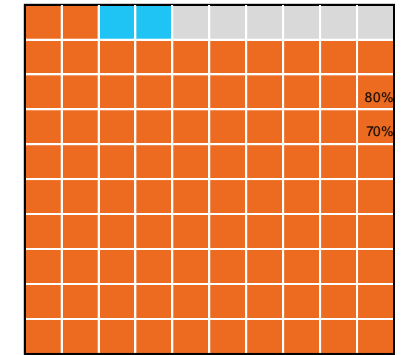
Data as at:
29 Jun 2022

Vaccinations by State – Queensland

Past 7 days

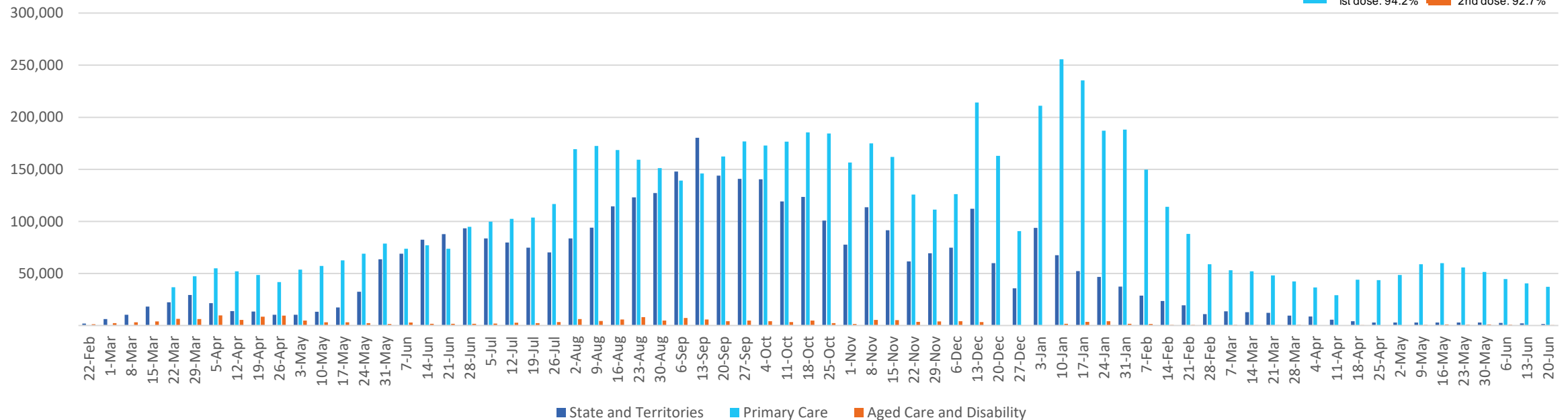
	23/06/2022	24/06/2022	25/06/2022	26/06/2022	27/06/2022	28/06/2022	29/06/2022	7 day total
State and Territory	426	343	52	17	196	449	340	1,823
Aged Care and Disability	77	55	<10	<10	206	93	76	507
Primary Care	7,891	6,826	1,738	607	5,721	7,837	6,507	37,127
Total (rounded)	8 K	7 K	2 K	1 K	6 K	8 K	7 K	39 K

Eligible population by % coverage



1st dose: 94.2% 2nd dose: 92.7%

Doses administered by channel

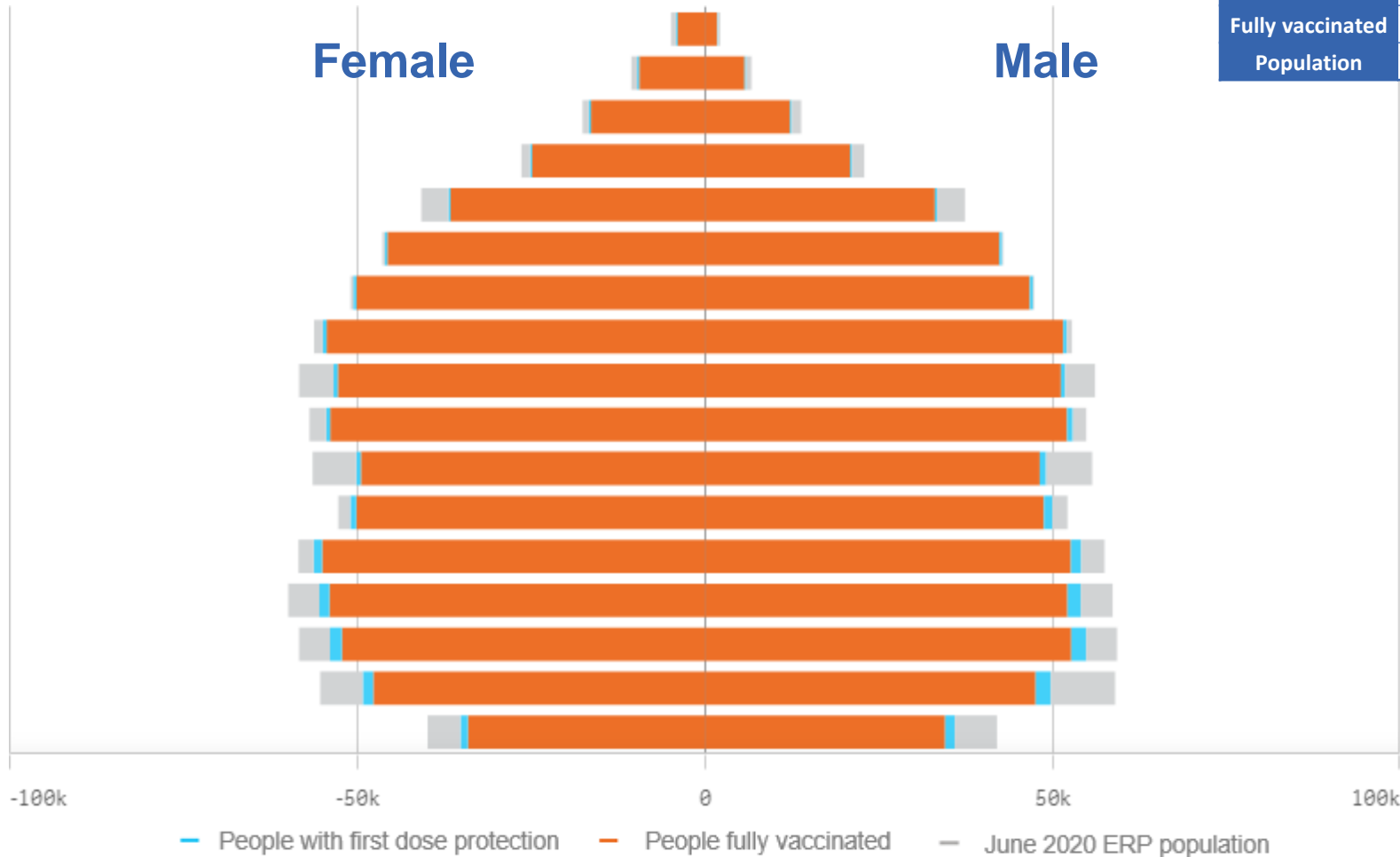


*Administration state breakdown indicates state in which a vaccine was administered and may differ to residential state. Recent weeks may be understated.

Data as at:
29 Jun 2022

Vaccinations by State or Territory of residence

South Australia



	16+		50+		70+	
At least one dose	>95%	1,379,133	>95%	675,207	>95%	256,800
Fully vaccinated	93.71%	1,349,836	>95%	666,835	>95%	253,334
Population	1,440,400		674,384		240,514	

Age	At least one dose	Fully vaccinated
95+	>95%	>95%
90-94	>95%	>95%
85-89	>95%	>95%
80-84	>95%	>95%
75-79	>95%	>95%
70-74	>95%	>95%
65-69	>95%	>95%
60-64	>95%	>95%
55-59	92.06%	90.94%
50-54	>95%	94.92%
45-49	88.64%	87.17%
40-44	>95%	94.46%
35-39	>95%	93.20%
30-34	93.19%	90.14%
25-29	93.64%	90.09%
20-24	87.43%	83.96%
16-19	87.00%	83.91%

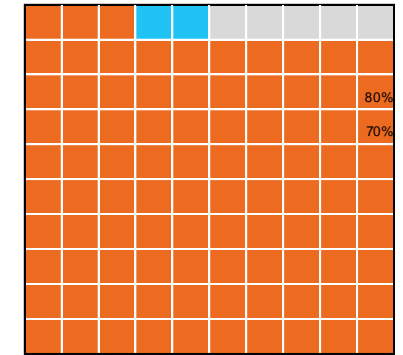
Vaccinations by State – South Australia

Data as at: 29 Jun 2022

Past 7 days

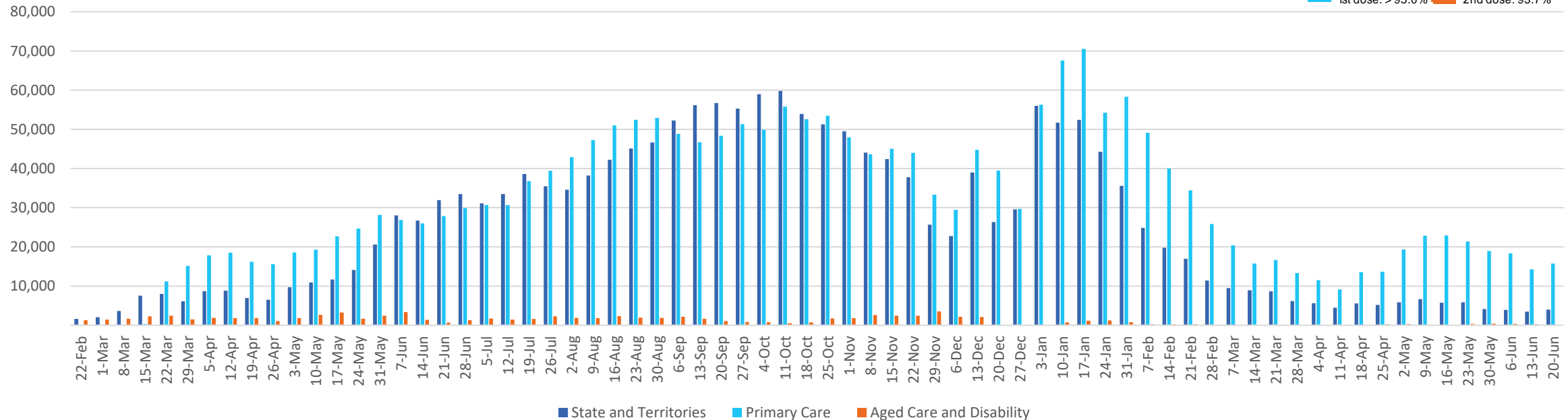
	23/06/2022	24/06/2022	25/06/2022	26/06/2022	27/06/2022	28/06/2022	29/06/2022	7 day total
State and Territory	779	679	525	273	469	528	786	4,039
Aged Care and Disability	<10	20	45	<10	<10	10	32	118
Primary Care	2,981	3,028	804	207	2,513	2,774	2,798	15,105
Total (rounded)	4 K	4 K	1 K	0 K	3 K	3 K	4 K	19 K

Eligible population by % coverage



1st dose: > 95.0% 2nd dose: 93.7%

Doses administered by channel

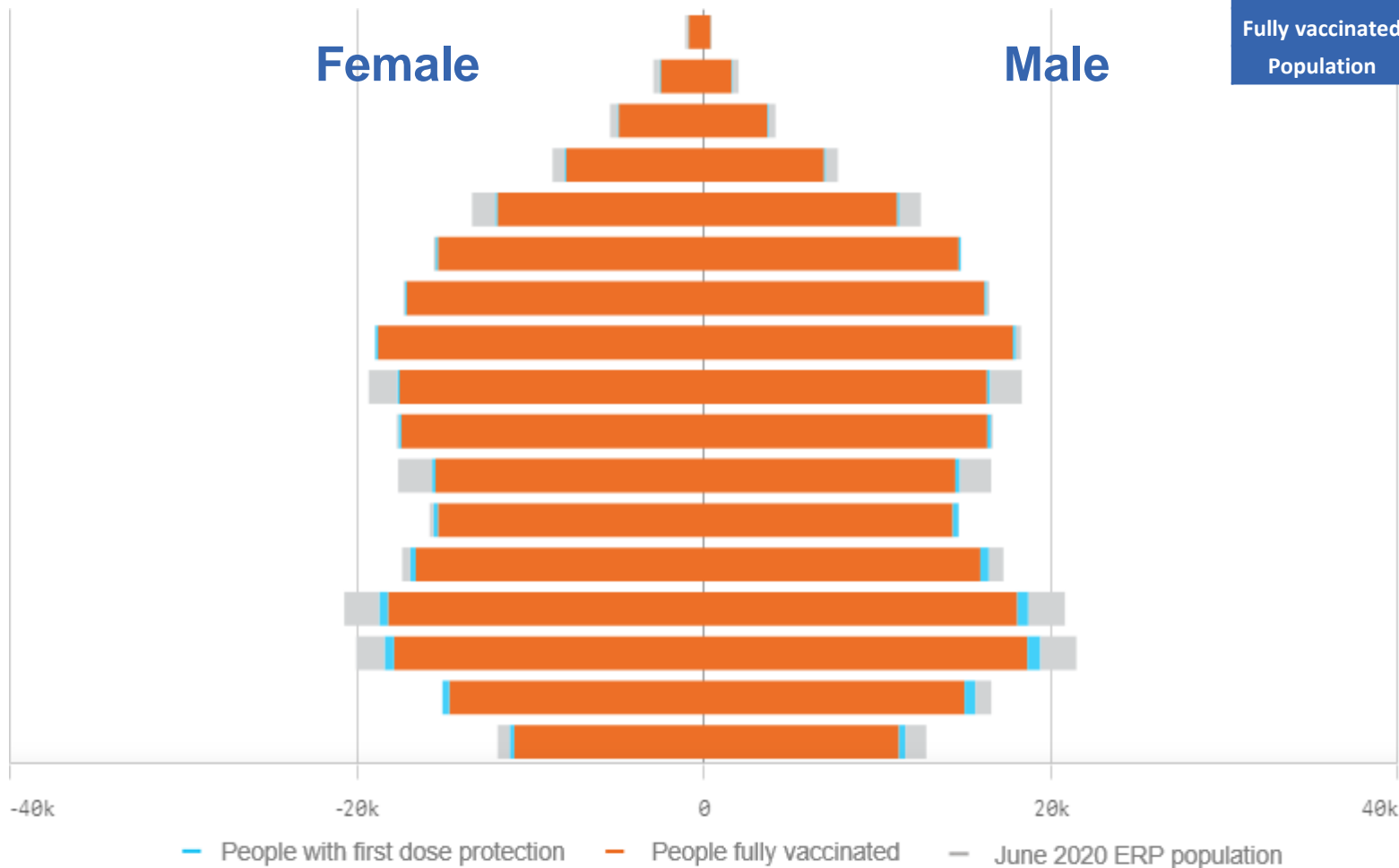


*Administration state breakdown indicates state in which a vaccine was administered and may differ to residential state. Recent weeks may be understated.

Data as at:
29 Jun 2022

Vaccinations by State or Territory of residence

Tasmania



	16+		50+		70+	
At least one dose	>95%	446,081	>95%	222,014	>95%	82,998
Fully vaccinated	>95%	437,059	>95%	219,605	>95%	81,933
Population	440,172		220,036		77,155	

Age	At least one dose	Fully vaccinated
95+	>95%	>95%
90-94	>95%	>95%
85-89	>95%	>95%
80-84	>95%	>95%
75-79	>95%	>95%
70-74	>95%	>95%
65-69	>95%	>95%
60-64	>95%	>95%
55-59	90.89%	89.98%
50-54	>95%	>95%
45-49	89.16%	87.69%
40-44	>95%	>95%
35-39	>95%	>95%
30-34	>95%	>95%
25-29	>95%	>95%
20-24	>95%	94.11%
16-19	92.44%	89.81%

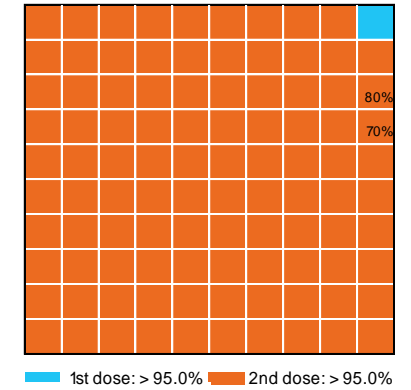
Vaccinations by State – Tasmania

Data as at:
29 Jun 2022

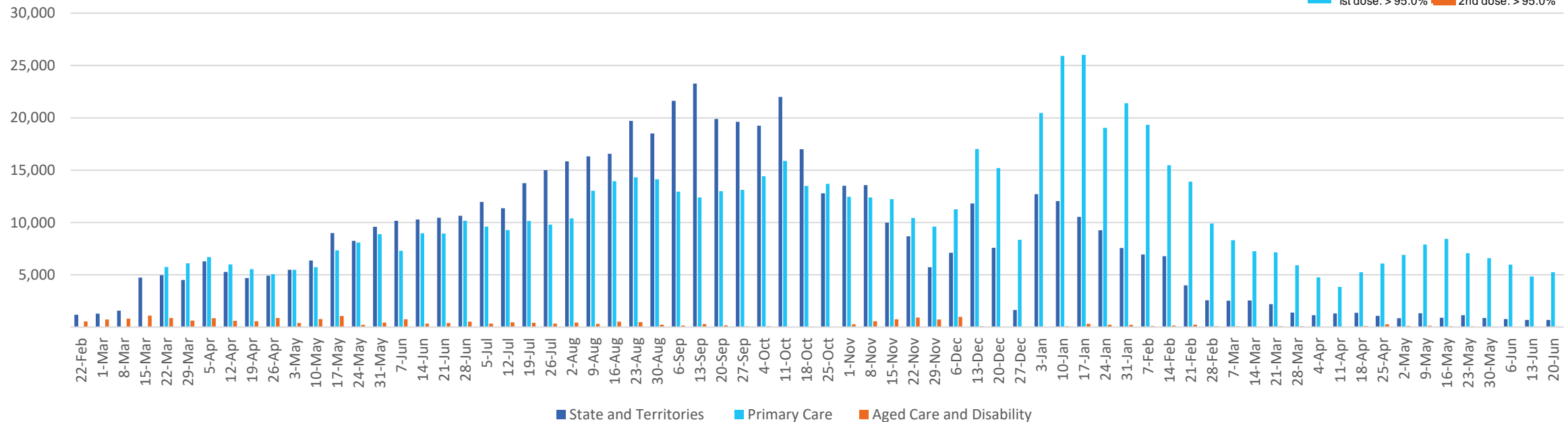
Past 7 days

	23/06/2022	24/06/2022	25/06/2022	26/06/2022	27/06/2022	28/06/2022	29/06/2022	7 day total
State and Territory	117	89	230	110	93	108	328	1,075
Aged Care and Disability	<10	18	13	<10	<10	15	26	72
Primary Care	981	974	162	123	973	897	813	4,923
Total (rounded)	1 K	1 K	0 K	0 K	1 K	1 K	1 K	6 K

Eligible population by % coverage



Doses administered by channel

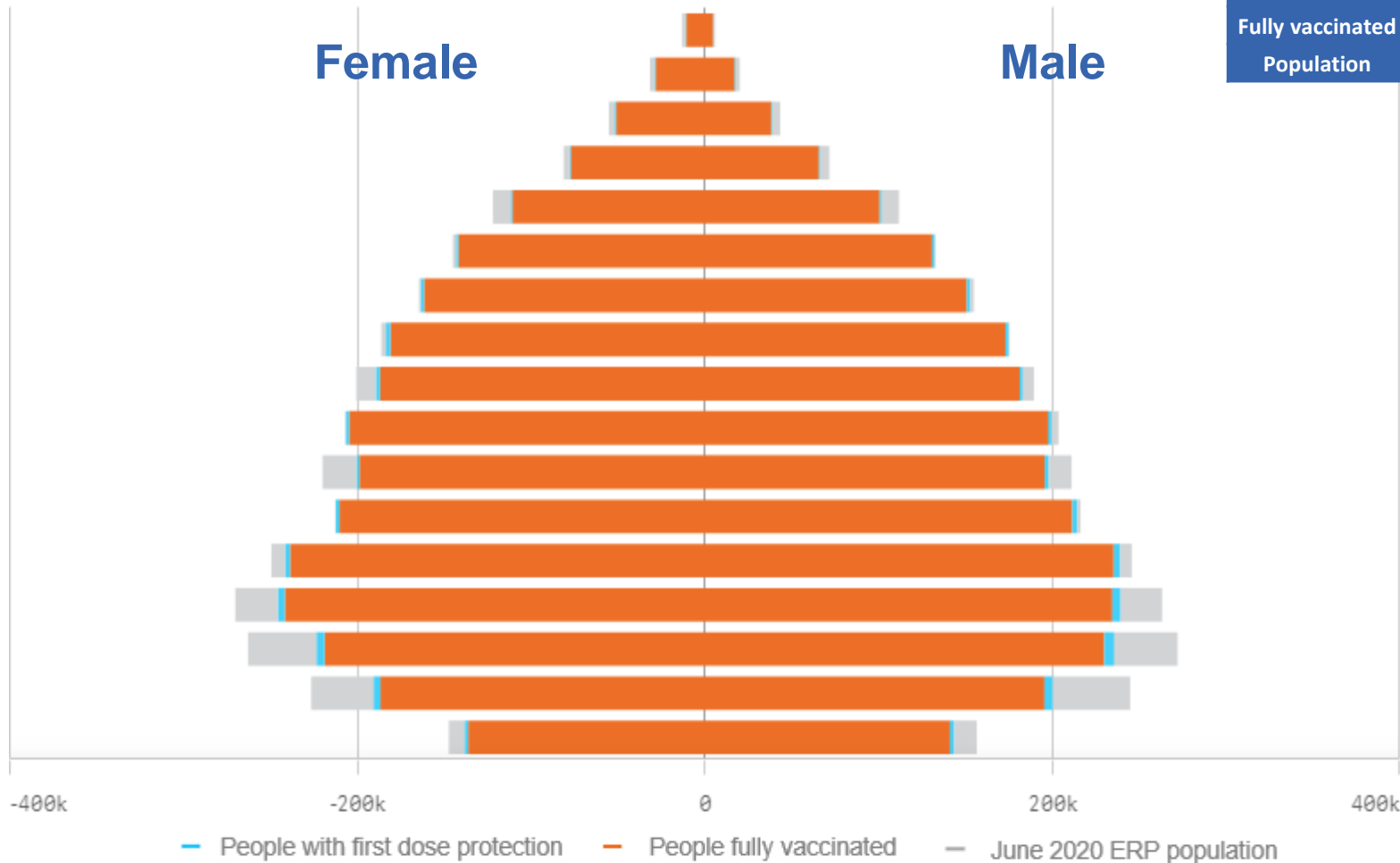


*Administration state breakdown indicates state in which a vaccine was administered and may differ to residential state. Recent weeks may be understated.

Data as at:
29 Jun 2022

Vaccinations by State or Territory of residence

Victoria



	16+		50+		70+	
At least one dose	>95%	5,175,238	>95%	2,244,815	>95%	789,035
Fully vaccinated	94.25%	5,096,705	>95%	2,216,673	>95%	778,368
Population	5,407,574		2,211,211		743,519	

Age	At least one dose	Fully vaccinated
95+	>95%	>95%
90-94	>95%	>95%
85-89	>95%	>95%
80-84	>95%	>95%
75-79	>95%	>95%
70-74	>95%	>95%
65-69	>95%	>95%
60-64	>95%	>95%
55-59	>95%	94.43%
50-54	>95%	>95%
45-49	92.53%	91.58%
40-44	>95%	>95%
35-39	>95%	>95%
30-34	91.18%	89.43%
25-29	86.14%	84.10%
20-24	83.20%	81.22%
16-19	92.82%	91.30%

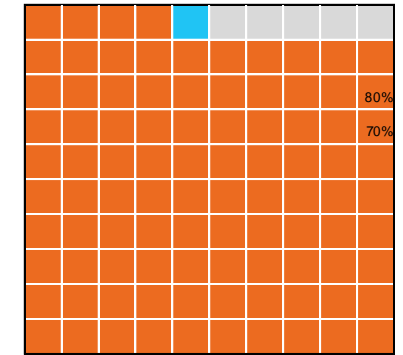
Vaccinations by State – Victoria

Data as at:
29 Jun 2022

Past 7 days

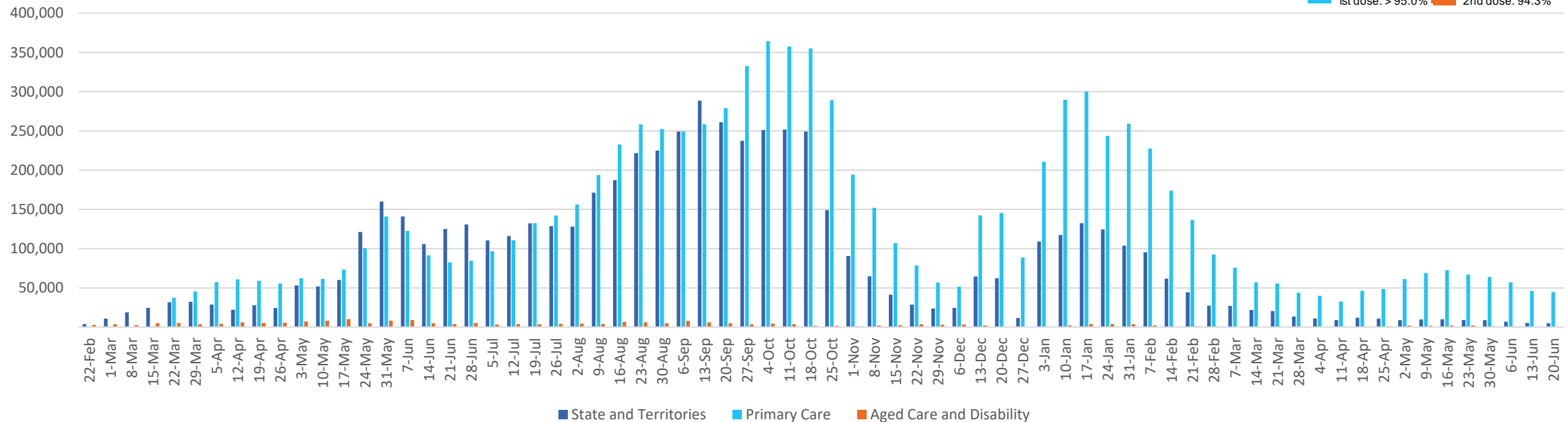
	23/06/2022	24/06/2022	25/06/2022	26/06/2022	27/06/2022	28/06/2022	29/06/2022	7 day total
State and Territory	1,033	877	600	279	739	777	805	5,110
Aged Care and Disability	89	63	<10	<10	46	111	65	378
Primary Care	9,749	8,112	2,219	1,019	6,891	7,775	7,235	43,000
Total (rounded)	11 K	9 K	3 K	1 K	8 K	9 K	8 K	48 K

Eligible population by % coverage



1st dose: > 95.0% 2nd dose: 94.3%

Doses administered by channel

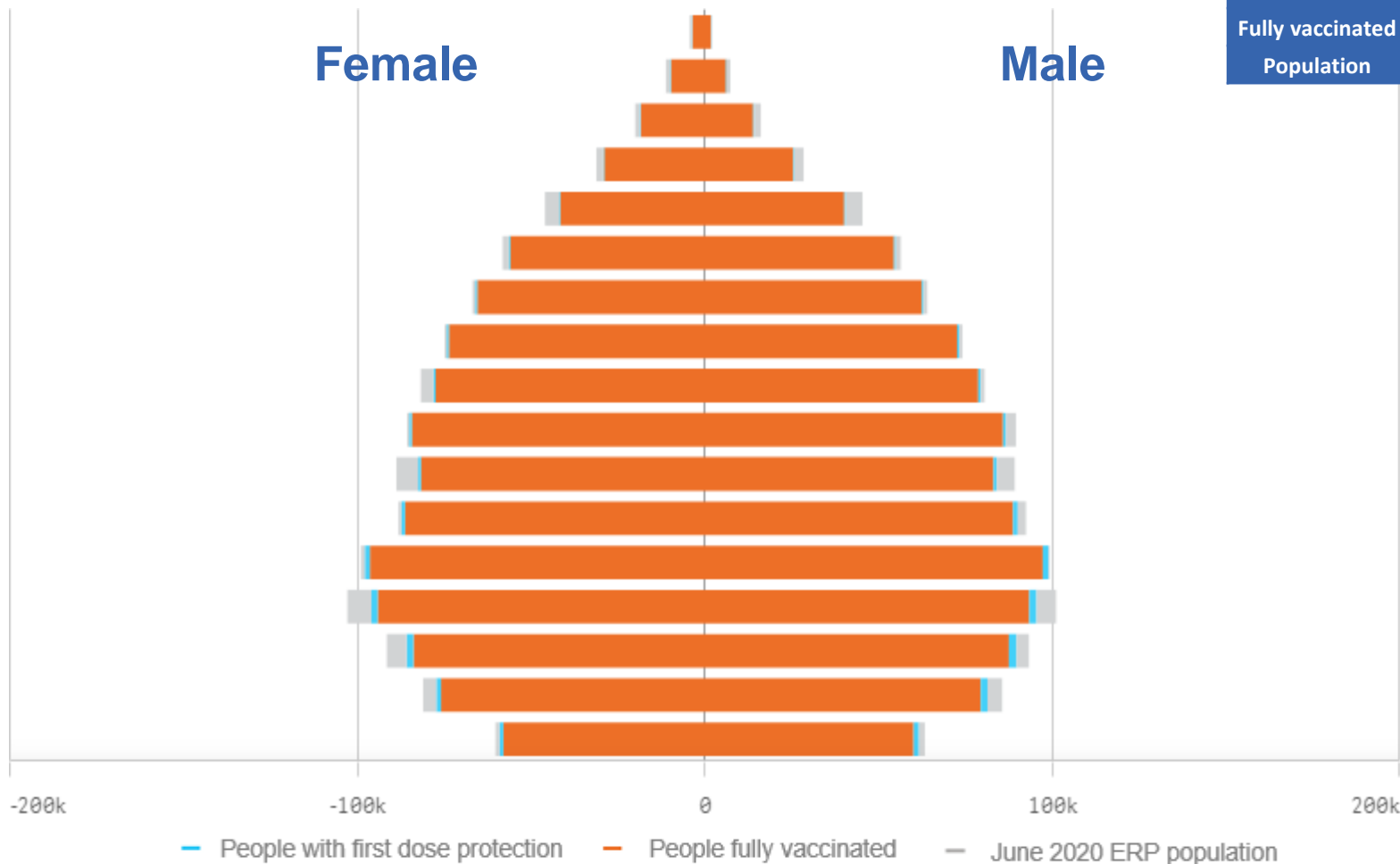


*Administration state breakdown indicates state in which a vaccine was administered and may differ to residential state. Recent weeks may be understated.

Data as at:
29 Jun 2022

Vaccinations by State or Territory of residence

Western Australia



	16+		50+		70+	
At least one dose	>95%	2,100,431	>95%	910,174	>95%	303,755
Fully vaccinated	>95%	2,069,397	>95%	901,282	>95%	300,211
Population	2,114,978		885,370		280,281	

Age	At least one dose	Fully vaccinated
95+	>95%	>95%
90-94	>95%	>95%
85-89	>95%	>95%
80-84	>95%	>95%
75-79	>95%	>95%
70-74	>95%	>95%
65-69	>95%	>95%
60-64	>95%	>95%
55-59	>95%	>95%
50-54	>95%	>95%
45-49	93.66%	92.65%
40-44	>95%	>95%
35-39	>95%	>95%
30-34	94.21%	92.22%
25-29	>95%	93.02%
20-24	>95%	93.39%
16-19	>95%	>95%

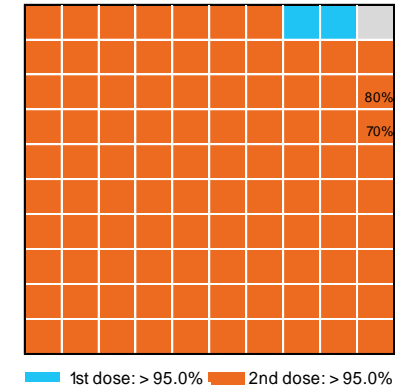
Vaccinations by State – Western Australia

Data as at:
29 Jun 2022

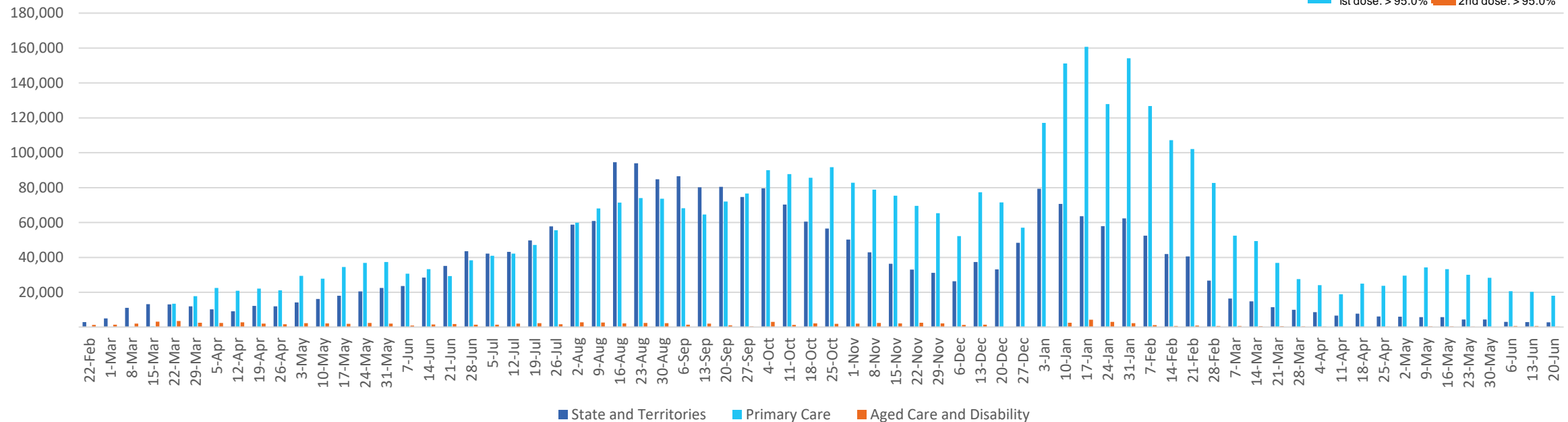
Past 7 days

	23/06/2022	24/06/2022	25/06/2022	26/06/2022	27/06/2022	28/06/2022	29/06/2022	7 day total
State and Territory	609	430	391	170	407	649	481	3,137
Aged Care and Disability	56	41	<10	<10	33	97	16	245
Primary Care	3,591	3,389	1,276	463	2,933	2,934	3,034	17,620
Total (rounded)	4 K	4 K	2 K	1 K	3 K	4 K	4 K	21 K

Eligible population by % coverage



Doses administered by channel



*Administration state breakdown indicates state in which a vaccine was administered and may differ to residential state. Recent weeks may be understated.