



Australian Government
Operation COVID Shield

COVID-19 Vaccine Roll-out Jurisdictional Breakdowns

29 June 2022

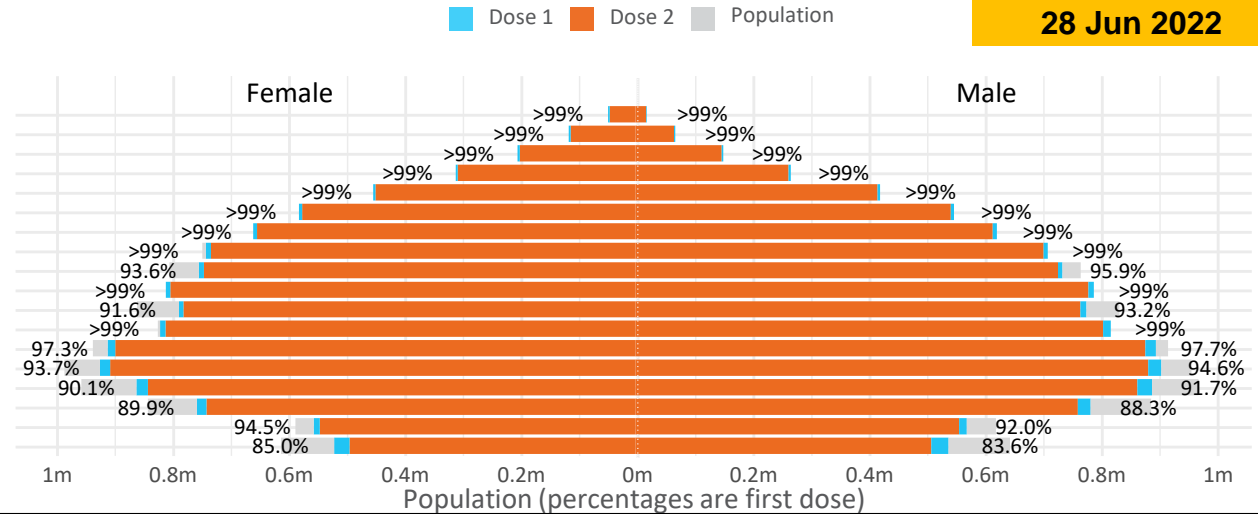
Doses by age and sex

First and second doses by age and sex

	16+	50+	12-15	5-11
Dose 1	97.53% (20,109,836 doses / 20,619,959 people)	>99% (8,927,822 doses / 8,749,703 people)	84.34% (1,049,139 doses / 1,243,990 people)	52.32% (1,191,145 doses / 2,276,638 people)
Dose 2	95.89% (19,773,266 doses / 20,619,959 people)	>99% (8,820,160 doses / 8,749,703 people)	79.81% (992,816 doses / 1,243,990 people)	39.55% (900,412 doses / 2,276,638 people)

Data as at:
28 Jun 2022

Age	Dose 1	Dose 2
95+	65,741 (>99%)	62,287 (>99%)
90-94	182,218 (>99%)	176,725 (>99%)
85-89	351,445 (>99%)	344,689 (>99%)
80-84	572,253 (>99%)	565,124 (>99%)
75-79	865,970 (>99%)	857,511 (>99%)
70-74	1,119,209 (>99%)	1,107,826 (>99%)
65-69	1,271,335 (>99%)	1,256,510 (>99%)
60-64	1,438,699 (>99%)	1,422,199 (99.0%)
55-59	1,475,661 (94.9%)	1,458,955 (93.8%)
50-54	1,585,291 (>99%)	1,568,334 (>99%)
45-49	1,550,660 (92.5%)	1,532,261 (91.4%)
40-44	1,626,088 (>99%)	1,602,073 (98.9%)
35-39	1,793,935 (97.8%)	1,761,686 (96.0%)
30-34	1,819,846 (94.6%)	1,777,783 (92.4%)
25-29	1,744,014 (91.5%)	1,696,140 (89.0%)
20-24	1,531,809 (89.5%)	1,491,527 (87.1%)
16-19	1,115,662 (93.3%)	1,091,636 (91.3%)
12-15	1,049,139 (84.3%)	992,816 (79.8%)



	AUS	ACT	NSW	NT	QLD	SA	TAS	VIC	WA
16 and over - dose 1	20,109,836	353,479	6,342,346	173,917	3,873,721	1,378,985	446,062	5,174,908	2,100,269
16 and over - dose 2	19,773,266	347,741	6,244,142	169,242	3,809,960	1,349,689	437,036	5,096,386	2,069,225
16 and over - population	20,619,959*	344,037	6,565,651	190,571	4,112,707	1,440,400	440,172	5,407,574	2,114,978
16 and over % with dose 1	97.53%	>99%	96.60%	91.26%	94.19%	95.74%	>99%	95.70%	>99%
16 and over % with dose 2	95.89%	>99%	95.10%	88.81%	92.64%	93.70%	>99%	94.25%	97.84%
5 to 11 - dose 1	1,191,145	31,737	355,758	13,139	206,261	83,661	28,443	324,348	140,184
5 to 11 - dose 2	900,412	27,317	275,222	8,788	149,849	63,525	23,138	245,738	102,219
5 to 11 - population	2,276,638	39,789	716,460	24,750	478,731	148,816	45,033	578,499	244,154
5 to 11 % with dose 1	52.32%	79.76%	49.65%	53.09%	43.08%	56.22%	63.16%	56.07%	57.42%
5 to 11 % with dose 2	39.55%	68.65%	38.41%	35.51%	31.30%	42.69%	51.38%	42.48%	41.87%
12 to 15 - dose 1	1,049,139	20,121	322,556	10,747	205,505	68,217	22,863	274,182	115,519
12 to 15 - dose 2	992,816	19,565	308,082	9,699	191,914	64,442	21,741	262,269	106,910
12 to 15 - population	1,243,990	19,693	390,330	13,060	270,146	82,747	26,308	308,611	132,869
12 to 15 % with dose 1	84.34%	>99%	82.64%	82.29%	76.07%	82.44%	86.91%	88.84%	86.94%
12 to 15 % with dose 2	79.81%	>99%	78.93%	74.26%	71.04%	77.88%	82.64%	84.98%	80.46%

*National population will not equal sum of listed jurisdictions due to a small number of people counted in national population residing in some 'other' territories. Sum of state doses will not add to national total as some records are unable to be geocoded to a State or Territory. Doses sourced from Australian Immunisation Register, population from ABS ERP June 2020

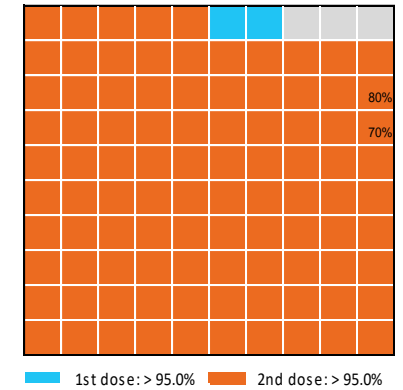
Vaccinations by State – National Summary

Data as at: 28 Jun 2022

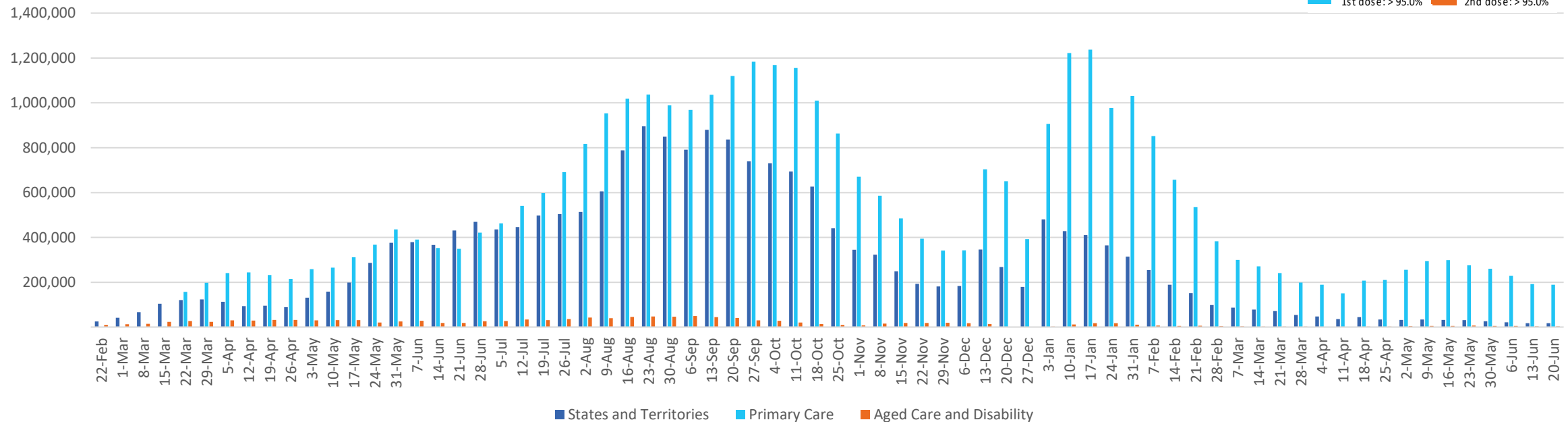
Past 7 days

	22/06/2022	23/06/2022	24/06/2022	25/06/2022	26/06/2022	27/06/2022	28/06/2022	7 day total
State and Territory	3,720	4,768	3,366	2,374	1,685	3,014	3,277	22,204
Aged Care and Disability	519	439	496	97	<10	688	452	2,692
Primary Care	38,803	40,044	35,227	9,706	3,605	30,560	35,363	193,308
Total (rounded)	43 K	45 K	39 K	12 K	5 K	34 K	39 K	218 K

Eligible population by % coverage



Doses administered by channel

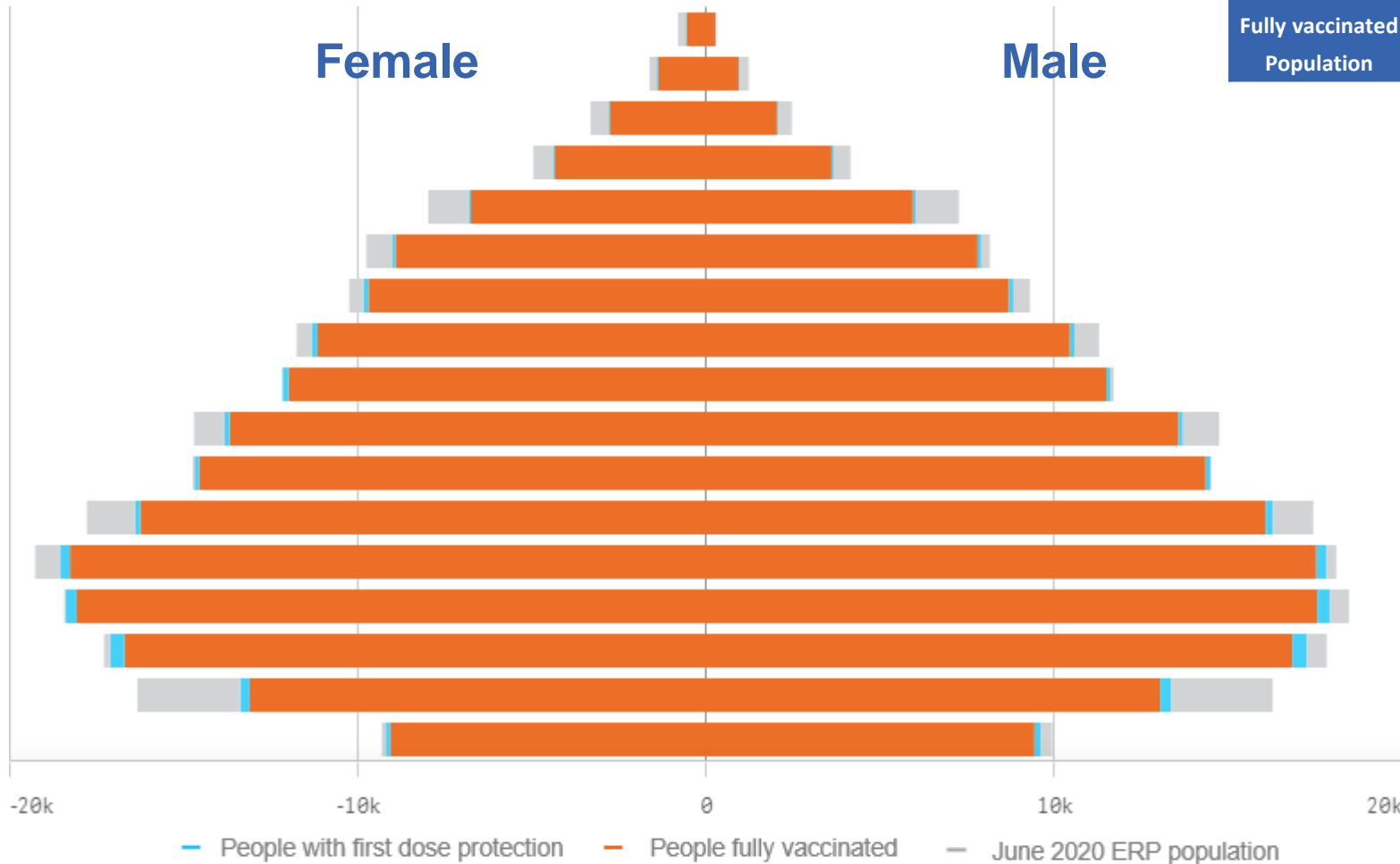


*Administration state breakdown indicates state in which a vaccine was administered and may differ to residential state. Recent weeks may be understated.

Data as at:
28 Jun 2022

Vaccinations by State or Territory of residence

Australian Capital Territory



	16+		50+		70+	
At least one dose	>95%	353,479	>95%	138,157	>95%	46,082
Fully vaccinated	>95%	347,741	>95%	136,310	>95%	45,421
Population	344,037		127,802		39,946	

Age	At least one dose	Fully vaccinated
95+	>95%	>95%
90-94	>95%	>95%
85-89	>95%	>95%
80-84	>95%	>95%
75-79	>95%	>95%
70-74	>95%	>95%
65-69	>95%	>95%
60-64	>95%	>95%
55-59	>95%	>95%
50-54	>95%	>95%
45-49	>95%	>95%
40-44	>95%	>95%
35-39	>95%	>95%
30-34	>95%	>95%
25-29	>95%	>95%
20-24	82.54%	80.49%
16-19	>95%	>95%

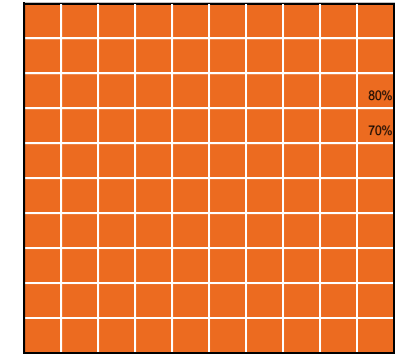
Vaccinations by State – Australian Capital Territory

Data as at:
28 Jun 2022

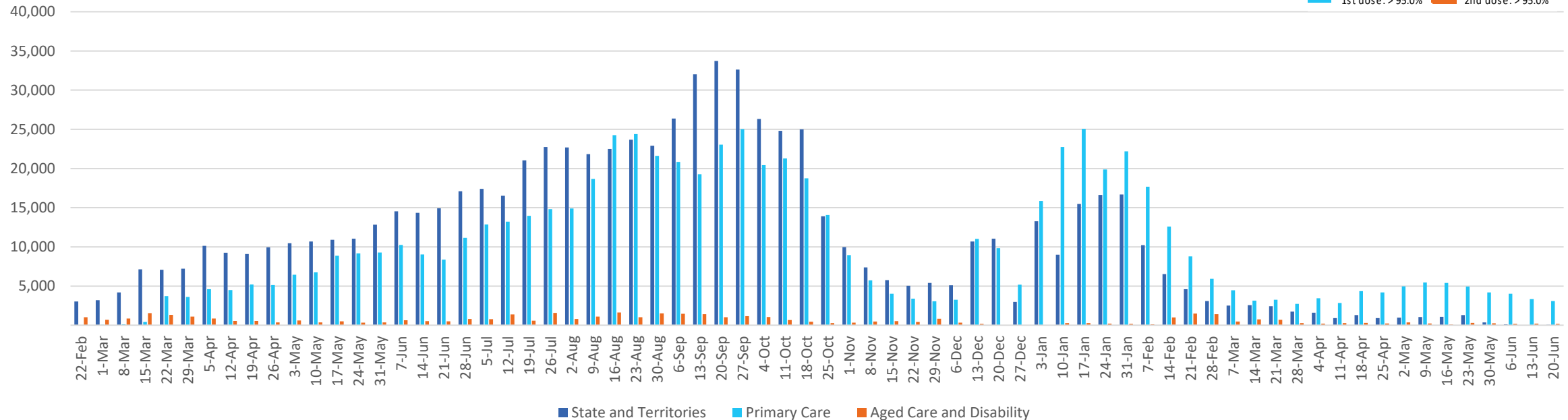
Past 7 days

	22/06/2022	23/06/2022	24/06/2022	25/06/2022	26/06/2022	27/06/2022	28/06/2022	7 day total
State and Territory	454	521	532	155	55	545	559	2,821
Aged Care and Disability	13	16	59	<10	<10	<10	11	99
Primary Care	652	727	559	199	45	587	629	3,398
Total (rounded)	1 K	1 K	1 K	0 K	0 K	1 K	1 K	6 K

Eligible population by % coverage



Doses administered by channel

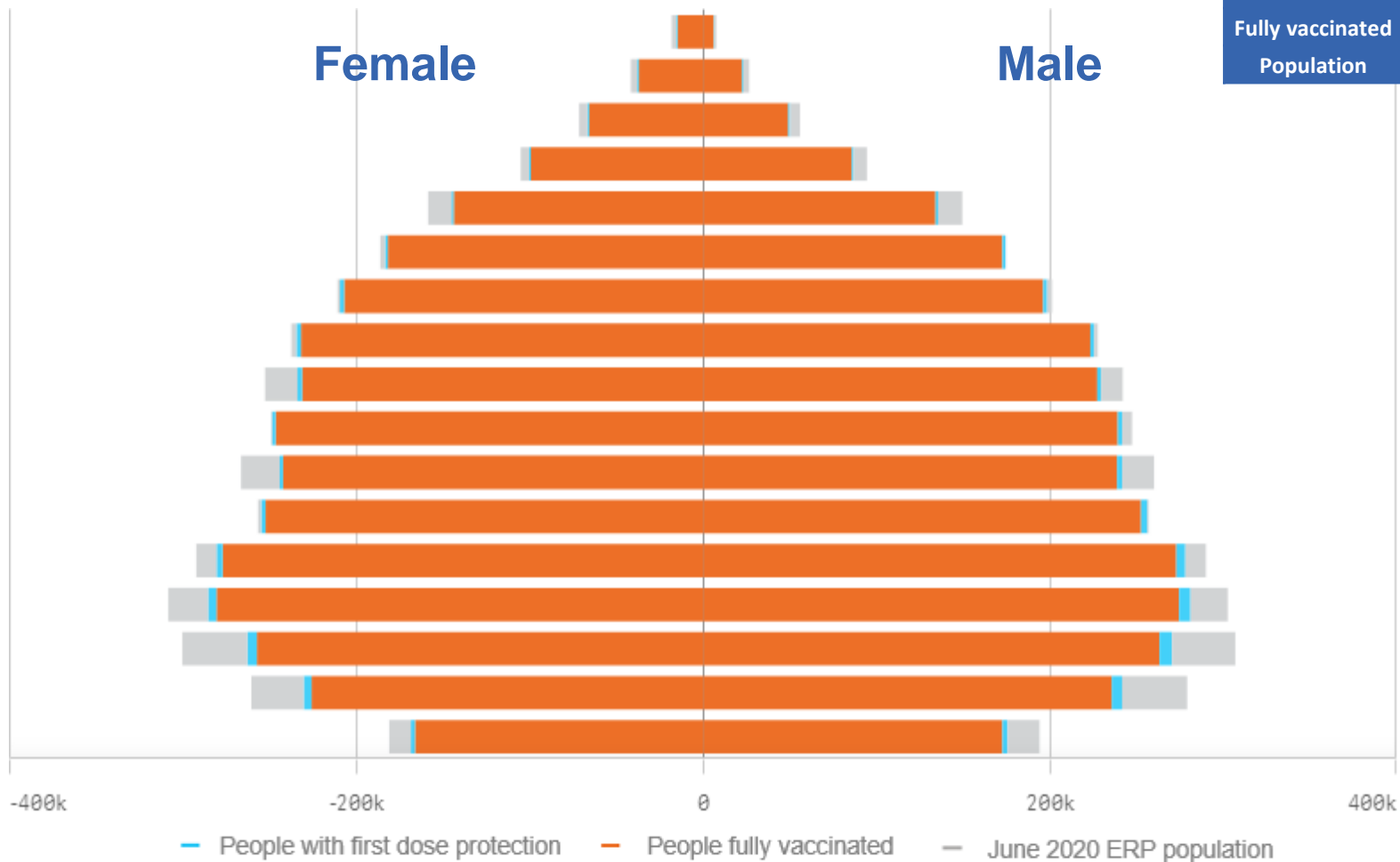


*Administration state breakdown indicates state in which a vaccine was administered and may differ to residential state. Recent weeks may be understated.

Data as at:
28 Jun 2022

Vaccinations by State or Territory of residence

New South Wales



	16+	50+	70+
At least one dose	>95% 6,342,346	>95% 2,854,343	>95% 1,027,685
Fully vaccinated	>95% 6,244,142	>95% 2,820,352	>95% 1,014,292
Population	6,565,651	2,807,793	962,606

Age	At least one dose	Fully vaccinated
95+	>95%	>95%
90-94	>95%	>95%
85-89	>95%	>95%
80-84	>95%	>95%
75-79	>95%	>95%
70-74	>95%	>95%
65-69	>95%	>95%
60-64	>95%	>95%
55-59	93.85%	92.79%
50-54	>95%	>95%
45-49	92.43%	91.44%
40-44	>95%	>95%
35-39	>95%	94.69%
30-34	93.22%	91.20%
25-29	88.39%	86.11%
20-24	87.84%	85.75%
16-19	91.86%	90.37%

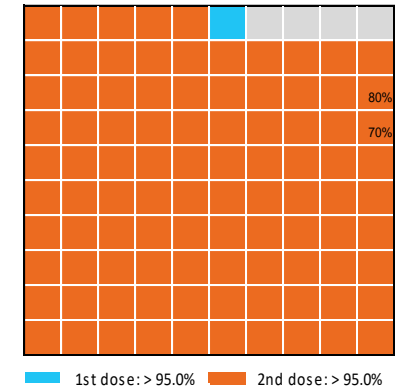
Vaccinations by State – New South Wales

Data as at: 28 Jun 2022

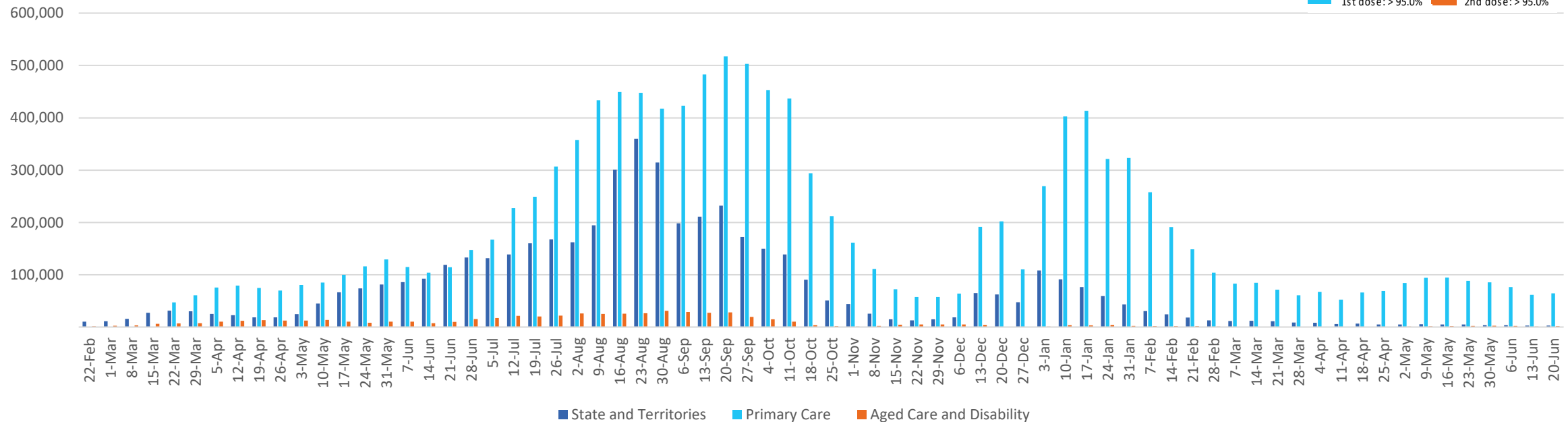
Past 7 days

	22/06/2022	23/06/2022	24/06/2022	25/06/2022	26/06/2022	27/06/2022	28/06/2022	7 day total
State and Territory	221	1,233	357	376	775	503	150	3,615
Aged Care and Disability	252	190	238	32	<10	398	115	1,225
Primary Care	13,169	13,954	12,118	3,286	1,134	10,818	12,304	66,783
Total (rounded)	14 K	15 K	13 K	4 K	2 K	12 K	13 K	72 K

Eligible population by % coverage



Doses administered by channel

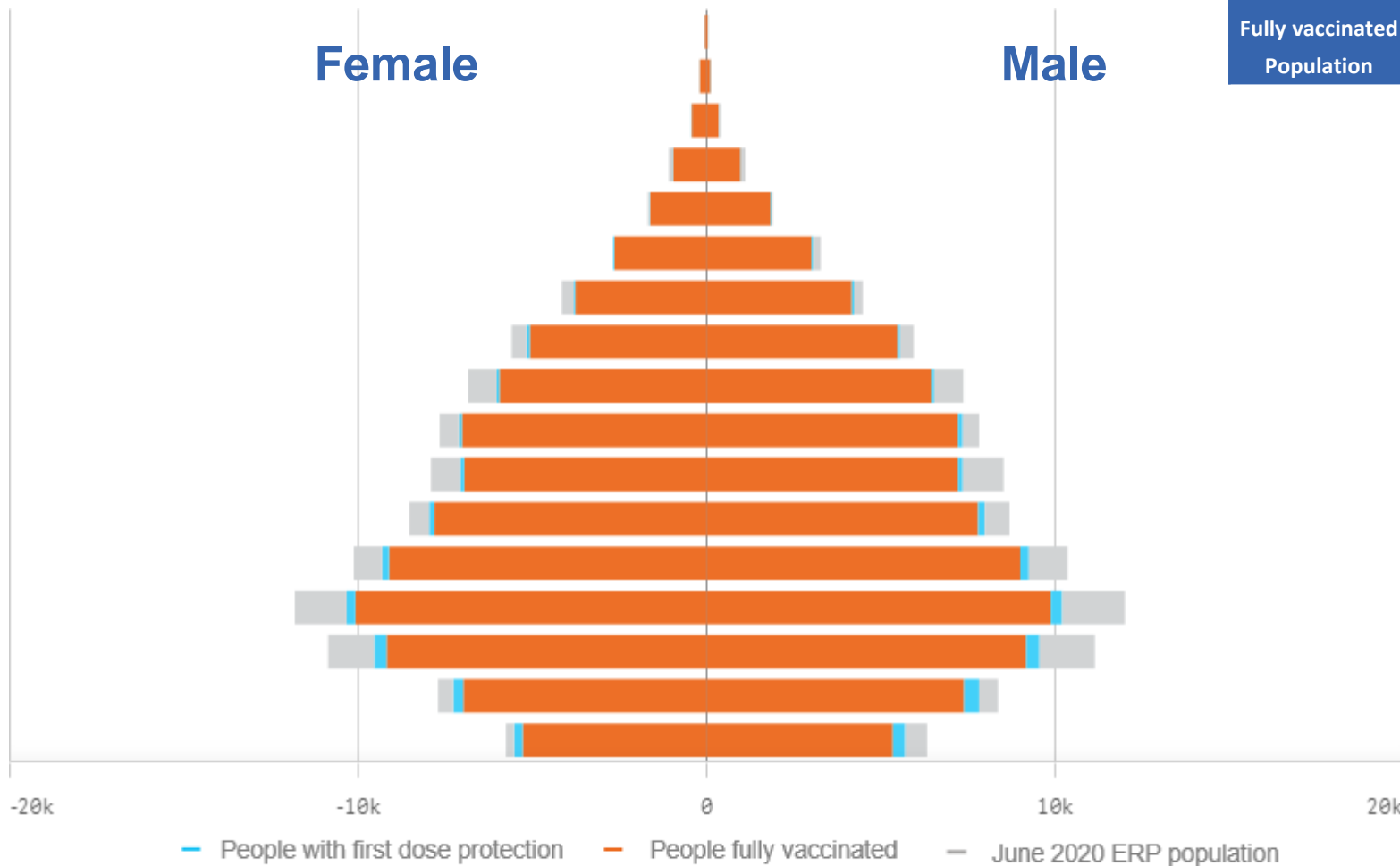


*Administration state breakdown indicates state in which a vaccine was administered and may differ to residential state. Recent weeks may be understated.

Data as at:
28 Jun 2022

Vaccinations by State or Territory of residence

Northern Territory



	16+		50+		70+	
At least one dose	91.26%	173,917	93.74%	58,382	>95%	12,476
Fully vaccinated	88.81%	169,242	92.32%	57,496	>95%	12,261
Population	190,571		62,280		12,343	

Age	At least one dose	Fully vaccinated
95+	>95%	94.85%
90-94	>95%	>95%
85-89	>95%	>95%
80-84	>95%	>95%
75-79	>95%	>95%
70-74	>95%	>95%
65-69	93.20%	91.92%
60-64	93.04%	91.63%
55-59	88.48%	87.28%
50-54	93.56%	92.09%
45-49	87.93%	86.34%
40-44	92.87%	90.83%
35-39	90.98%	88.71%
30-34	86.83%	84.28%
25-29	87.46%	84.00%
20-24	94.18%	89.65%
16-19	92.96%	87.95%

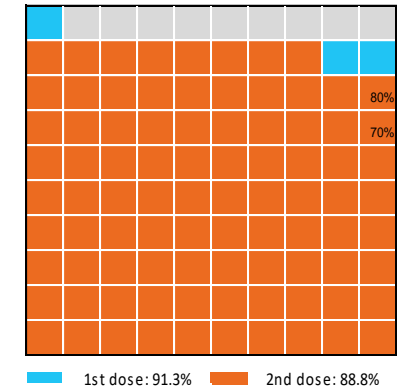
Data as at:
28 Jun 2022

Vaccinations by State – Northern Territory

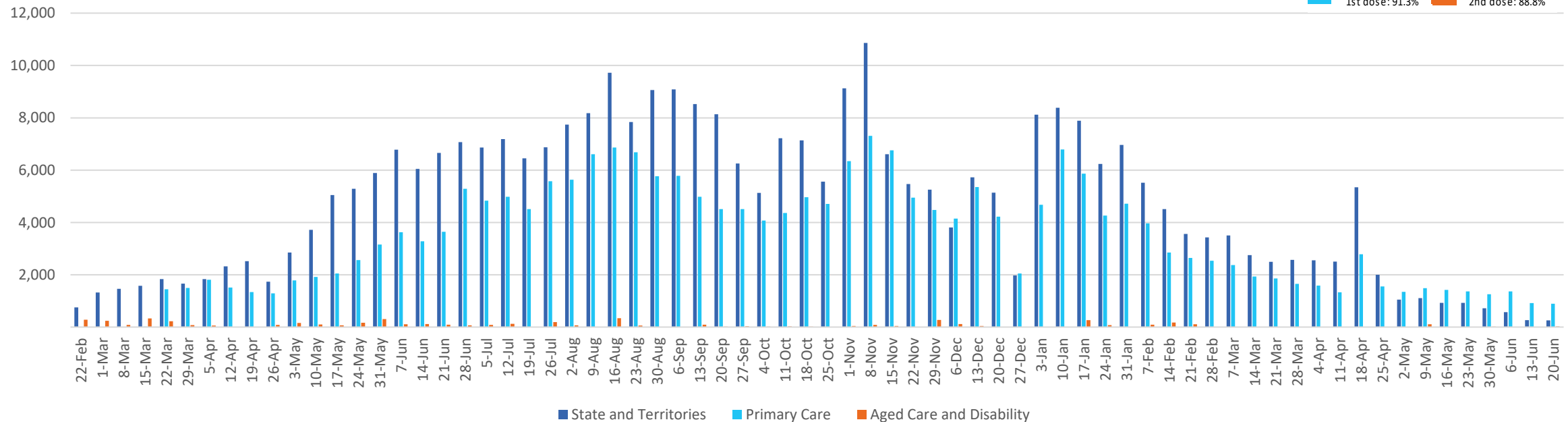
Past 7 days

	22/06/2022	23/06/2022	24/06/2022	25/06/2022	26/06/2022	27/06/2022	28/06/2022	7 day total
State and Territory	54	50	59	45	<10	62	57	333
Aged Care and Disability	16	<10	<10	<10	<10	<10	<10	25
Primary Care	243	170	221	22	<10	124	213	1,000
Total (rounded)	0 K	0 K	0 K	0 K	0 K	0 K	0 K	1 K

Eligible population by % coverage



Doses administered by channel



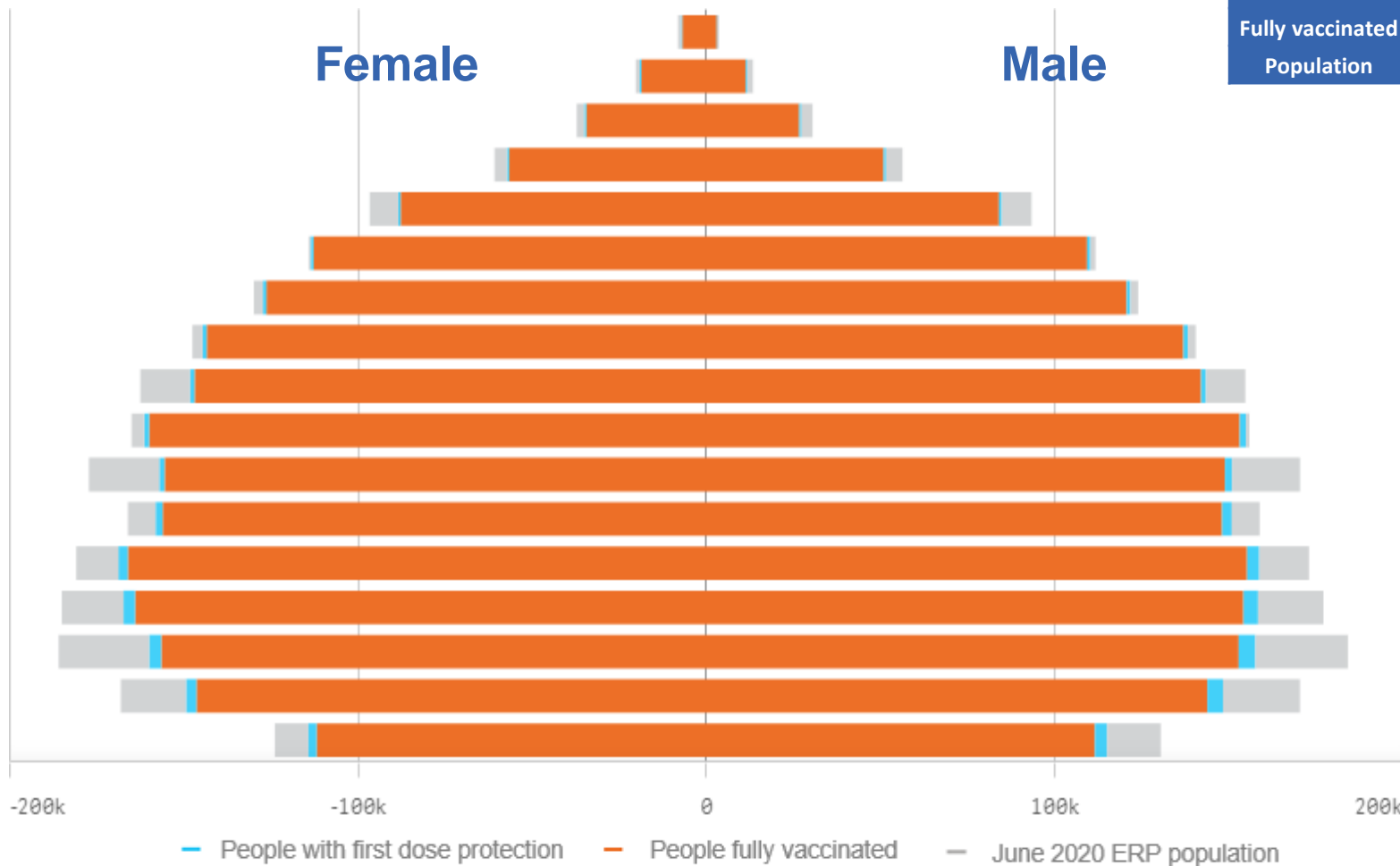
*Administration state breakdown indicates state in which a vaccine was administered and may differ to residential state. Recent weeks may be understated.

Data as at:
28 Jun 2022

Vaccinations by State or Territory of residence

Queensland

	16+	50+	70+
At least one dose	94.19% 3,873,721	>95% 1,752,304	>95% 610,545
Fully vaccinated	92.64% 3,809,960	>95% 1,733,981	>95% 603,121
Population	4,112,707	1,758,855	577,767



Age	At least one dose	Fully vaccinated
95+	>95%	>95%
90-94	>95%	>95%
85-89	>95%	>95%
80-84	>95%	>95%
75-79	>95%	>95%
70-74	>95%	>95%
65-69	>95%	>95%
60-64	>95%	>95%
55-59	92.01%	91.12%
50-54	>95%	>95%
45-49	88.65%	87.59%
40-44	>95%	93.68%
35-39	92.73%	90.92%
30-34	90.23%	88.07%
25-29	86.19%	83.81%
20-24	88.17%	85.87%
16-19	90.23%	87.89%

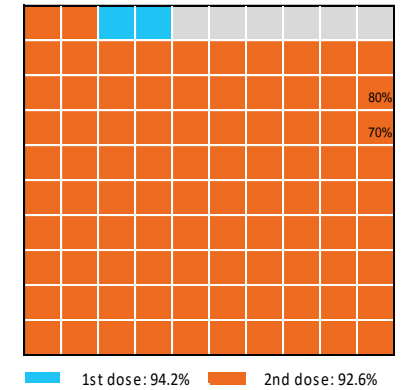
Vaccinations by State – Queensland

Data as at: 28 Jun 2022

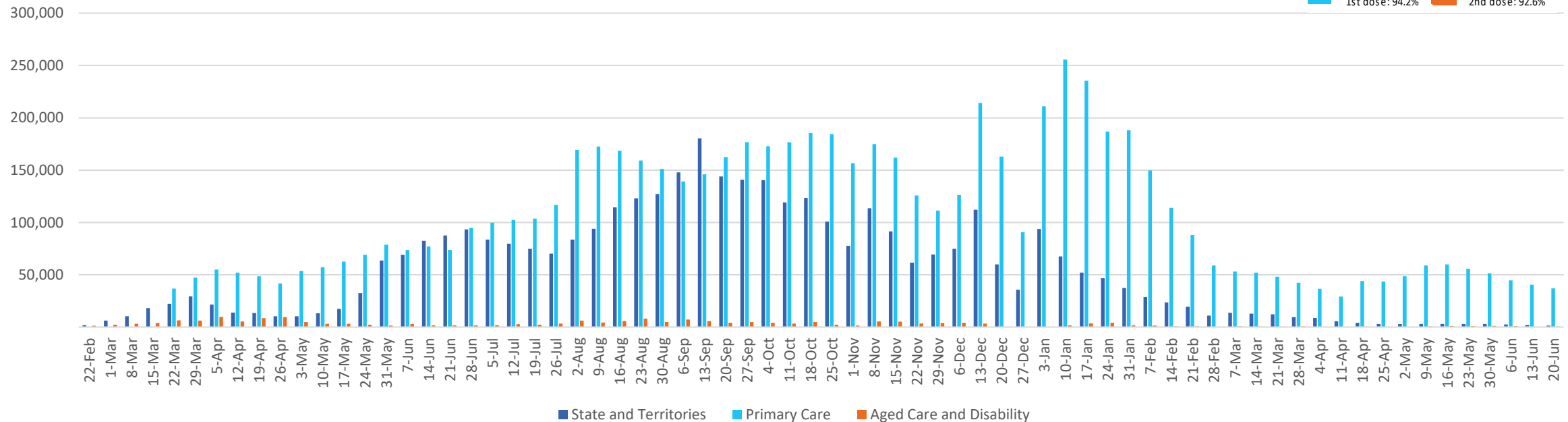
Past 7 days

	22/06/2022	23/06/2022	24/06/2022	25/06/2022	26/06/2022	27/06/2022	28/06/2022	7 day total
State and Territory	352	426	343	52	17	196	449	1,835
Aged Care and Disability	129	77	55	<10	<10	206	93	560
Primary Care	7,534	7,891	6,826	1,738	607	5,721	7,837	38,154
Total (rounded)	8 K	8 K	7 K	2 K	1 K	6 K	8 K	41 K

Eligible population by % coverage



Doses administered by channel

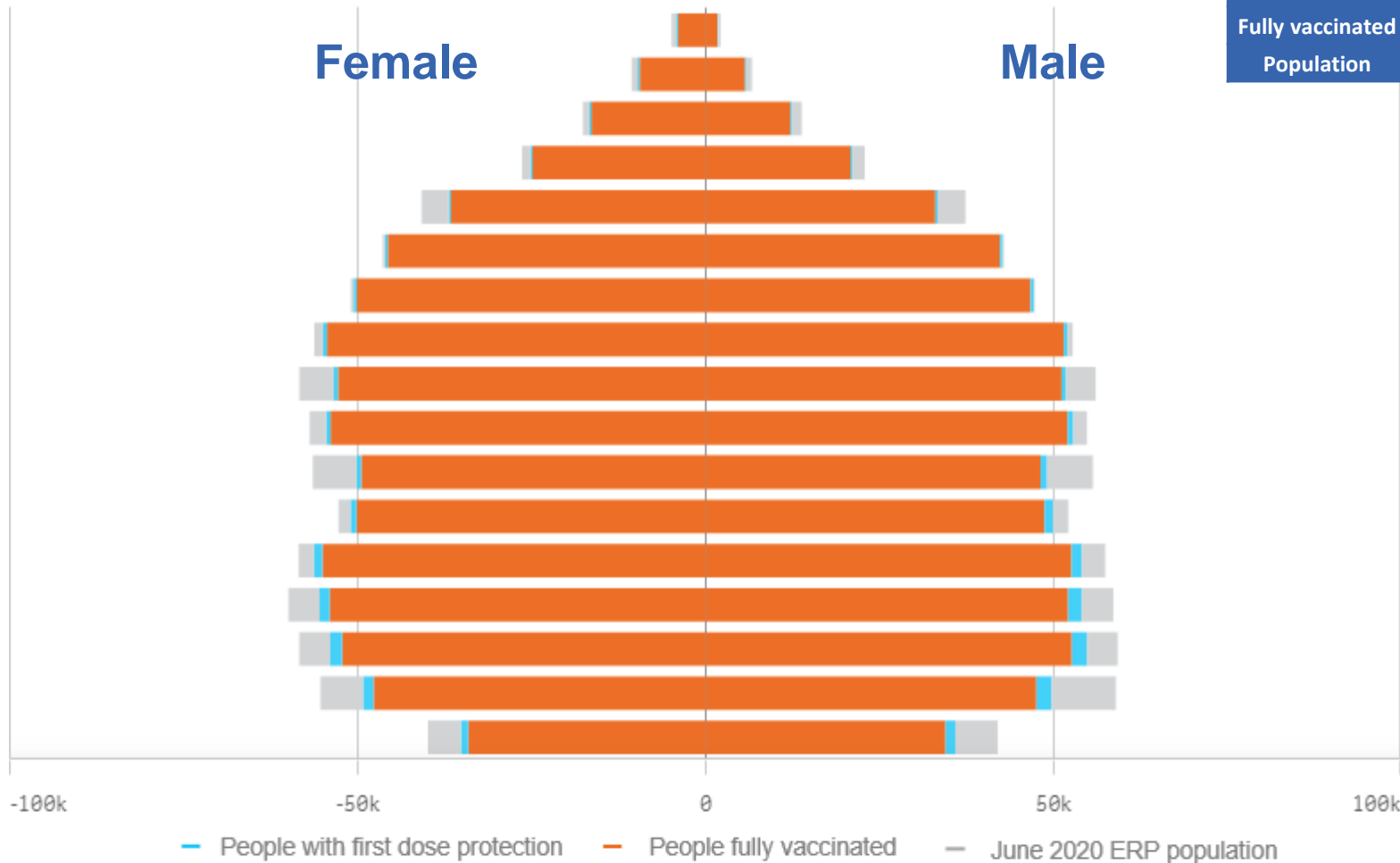


*Administration state breakdown indicates state in which a vaccine was administered and may differ to residential state. Recent weeks may be understated.

Data as at:
28 Jun 2022

Vaccinations by State or Territory of residence

South Australia



	16+		50+		70+	
At least one dose	>95%	1,378,985	>95%	675,113	>95%	256,741
Fully vaccinated	93.70%	1,349,689	>95%	666,741	>95%	253,272
Population	1,440,400		674,384		240,514	

Age	At least one dose	Fully vaccinated
95+	>95%	>95%
90-94	>95%	>95%
85-89	>95%	>95%
80-84	>95%	>95%
75-79	>95%	>95%
70-74	>95%	>95%
65-69	>95%	>95%
60-64	>95%	>95%
55-59	92.07%	90.95%
50-54	>95%	94.90%
45-49	88.64%	87.18%
40-44	>95%	94.45%
35-39	>95%	93.19%
30-34	93.19%	90.15%
25-29	93.63%	90.07%
20-24	87.44%	83.97%
16-19	86.96%	83.86%

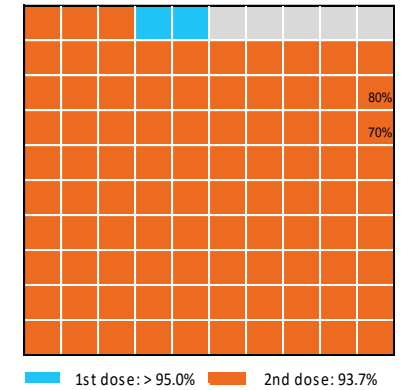
Vaccinations by State – South Australia

Data as at:
28 Jun 2022

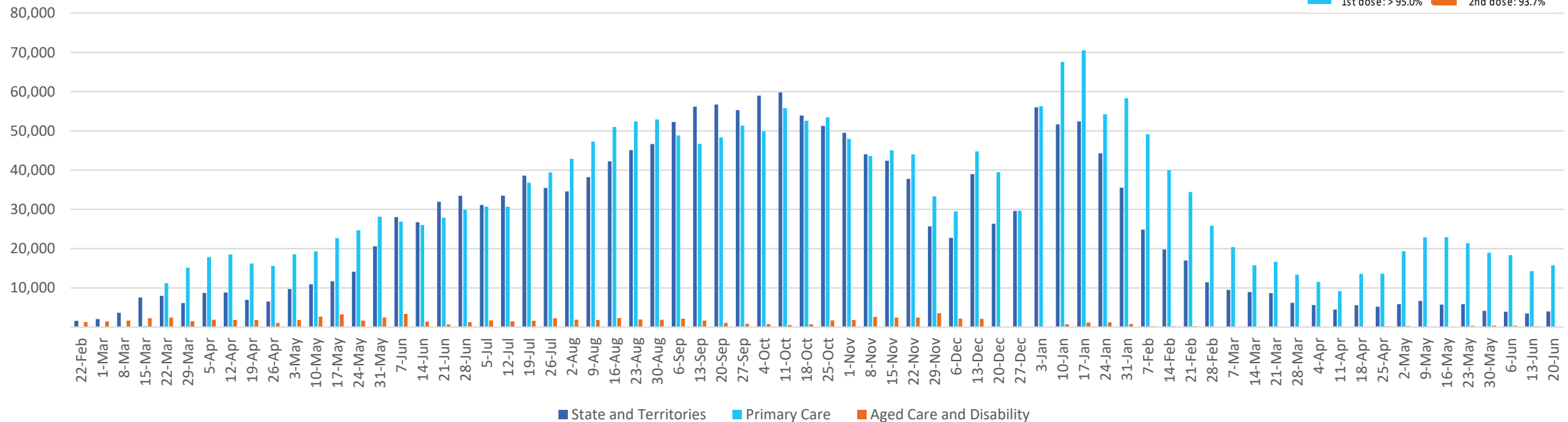
Past 7 days

	22/06/2022	23/06/2022	24/06/2022	25/06/2022	26/06/2022	27/06/2022	28/06/2022	7 day total
State and Territory	916	779	679	525	273	469	528	4,169
Aged Care and Disability	<10	<10	20	45	<10	<10	10	93
Primary Care	3,428	2,981	3,028	804	207	2,513	2,774	15,735
Total (rounded)	4 K	4 K	4 K	1 K	0 K	3 K	3 K	20 K

Eligible population by % coverage



Doses administered by channel

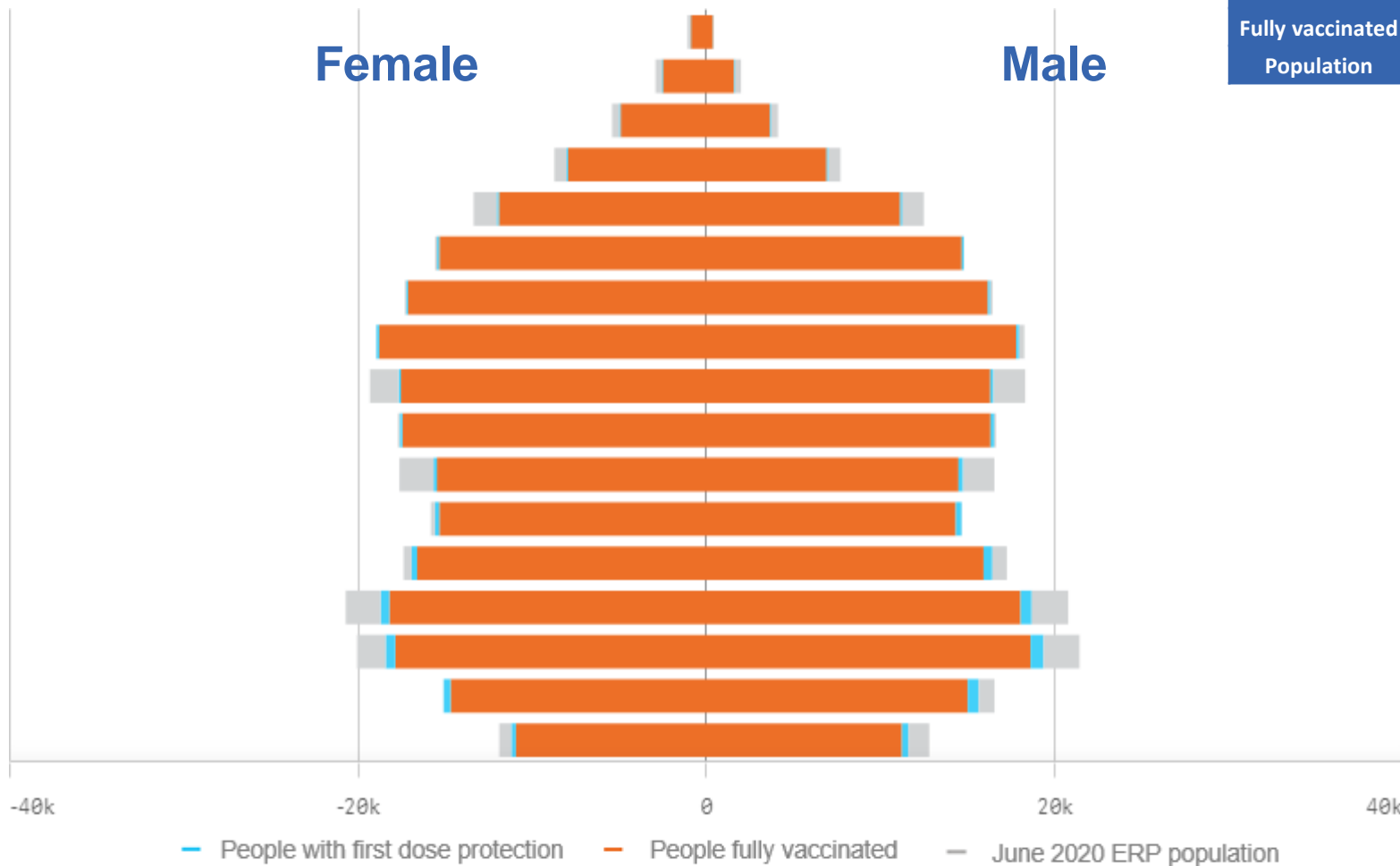


*Administration state breakdown indicates state in which a vaccine was administered and may differ to residential state. Recent weeks may be understated.

Data as at:
28 Jun 2022

Vaccinations by State or Territory of residence

Tasmania



	16+		50+		70+	
At least one dose	>95%	446,062	>95%	222,001	>95%	82,981
Fully vaccinated	>95%	437,036	>95%	219,590	>95%	81,912
Population	440,172		220,036		77,155	

Age	At least one dose	Fully vaccinated
95+	>95%	>95%
90-94	>95%	>95%
85-89	>95%	>95%
80-84	>95%	>95%
75-79	>95%	>95%
70-74	>95%	>95%
65-69	>95%	>95%
60-64	>95%	>95%
55-59	90.89%	89.98%
50-54	>95%	>95%
45-49	89.14%	87.68%
40-44	>95%	>95%
35-39	>95%	>95%
30-34	>95%	>95%
25-29	>95%	>95%
20-24	>95%	94.16%
16-19	92.45%	89.83%

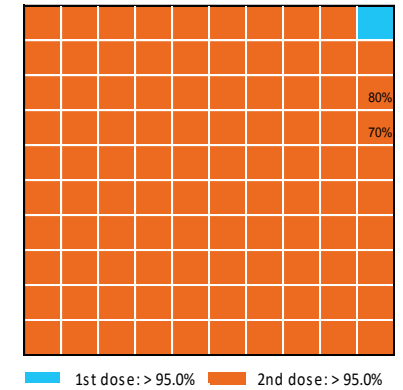
Vaccinations by State – Tasmania

Data as at:
28 Jun 2022

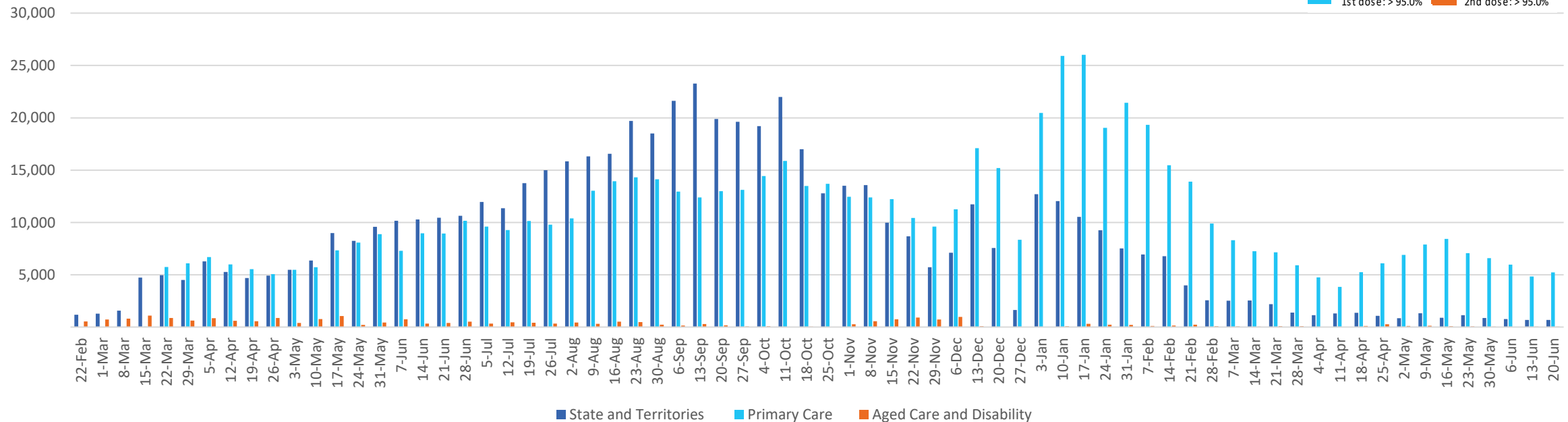
Past 7 days

	22/06/2022	23/06/2022	24/06/2022	25/06/2022	26/06/2022	27/06/2022	28/06/2022	7 day total
State and Territory	277	117	89	230	110	93	108	1,024
Aged Care and Disability	<10	<10	18	13	<10	<10	15	48
Primary Care	1,040	981	974	162	123	973	897	5,150
Total (rounded)	1 K	1 K	1 K	0 K	0 K	1 K	1 K	6 K

Eligible population by % coverage



Doses administered by channel

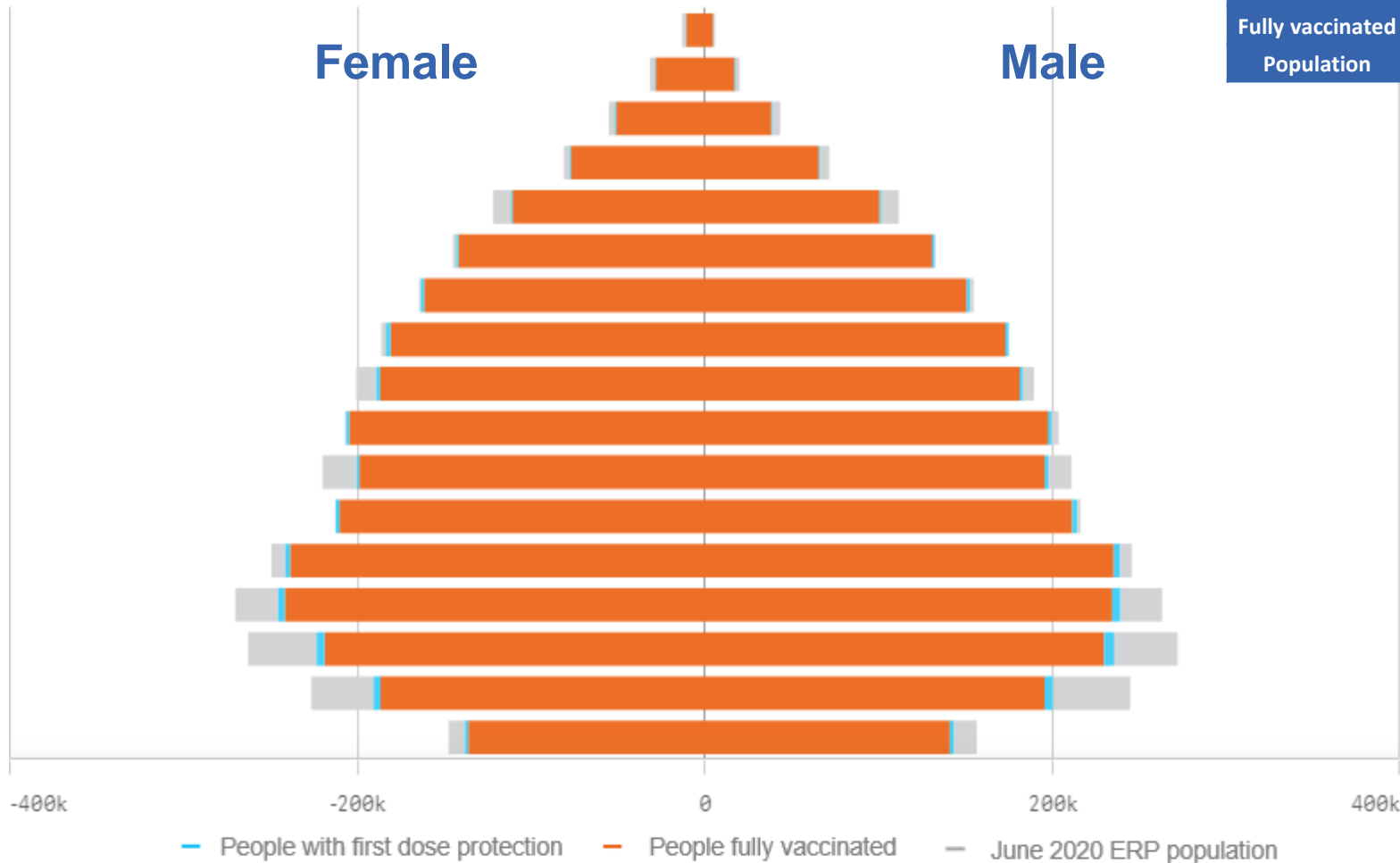


*Administration state breakdown indicates state in which a vaccine was administered and may differ to residential state. Recent weeks may be understated.

Data as at:
28 Jun 2022

Vaccinations by State or Territory of residence

Victoria



	16+		50+		70+	
At least one dose	>95%	5,174,908	>95%	2,244,543	>95%	788,889
Fully vaccinated	94.25%	5,096,386	>95%	2,216,397	>95%	778,213
Population	5,407,574		2,211,211		743,519	

Age	At least one dose	Fully vaccinated
95+	>95%	>95%
90-94	>95%	>95%
85-89	>95%	>95%
80-84	>95%	>95%
75-79	>95%	>95%
70-74	>95%	>95%
65-69	>95%	>95%
60-64	>95%	>95%
55-59	>95%	94.43%
50-54	>95%	>95%
45-49	92.53%	91.58%
40-44	>95%	>95%
35-39	>95%	>95%
30-34	91.18%	89.43%
25-29	86.14%	84.11%
20-24	83.22%	81.24%
16-19	92.79%	91.27%

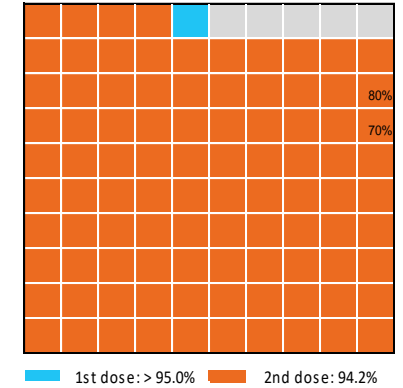
Vaccinations by State – Victoria

Data as at:
28 Jun 2022

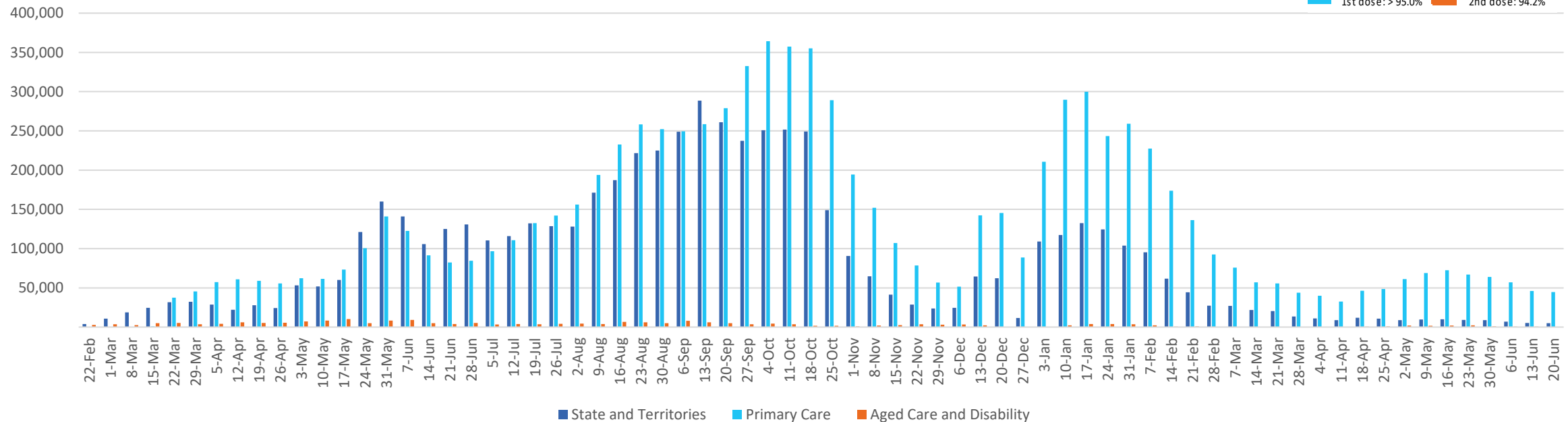
Past 7 days

	22/06/2022	23/06/2022	24/06/2022	25/06/2022	26/06/2022	27/06/2022	28/06/2022	7 day total
State and Territory	885	1,033	877	600	279	739	777	5,190
Aged Care and Disability	44	89	63	<10	<10	46	111	357
Primary Care	8,901	9,749	8,112	2,219	1,019	6,891	7,775	44,666
Total (rounded)	10 K	11 K	9 K	3 K	1 K	8 K	9 K	50 K

Eligible population by % coverage



Doses administered by channel

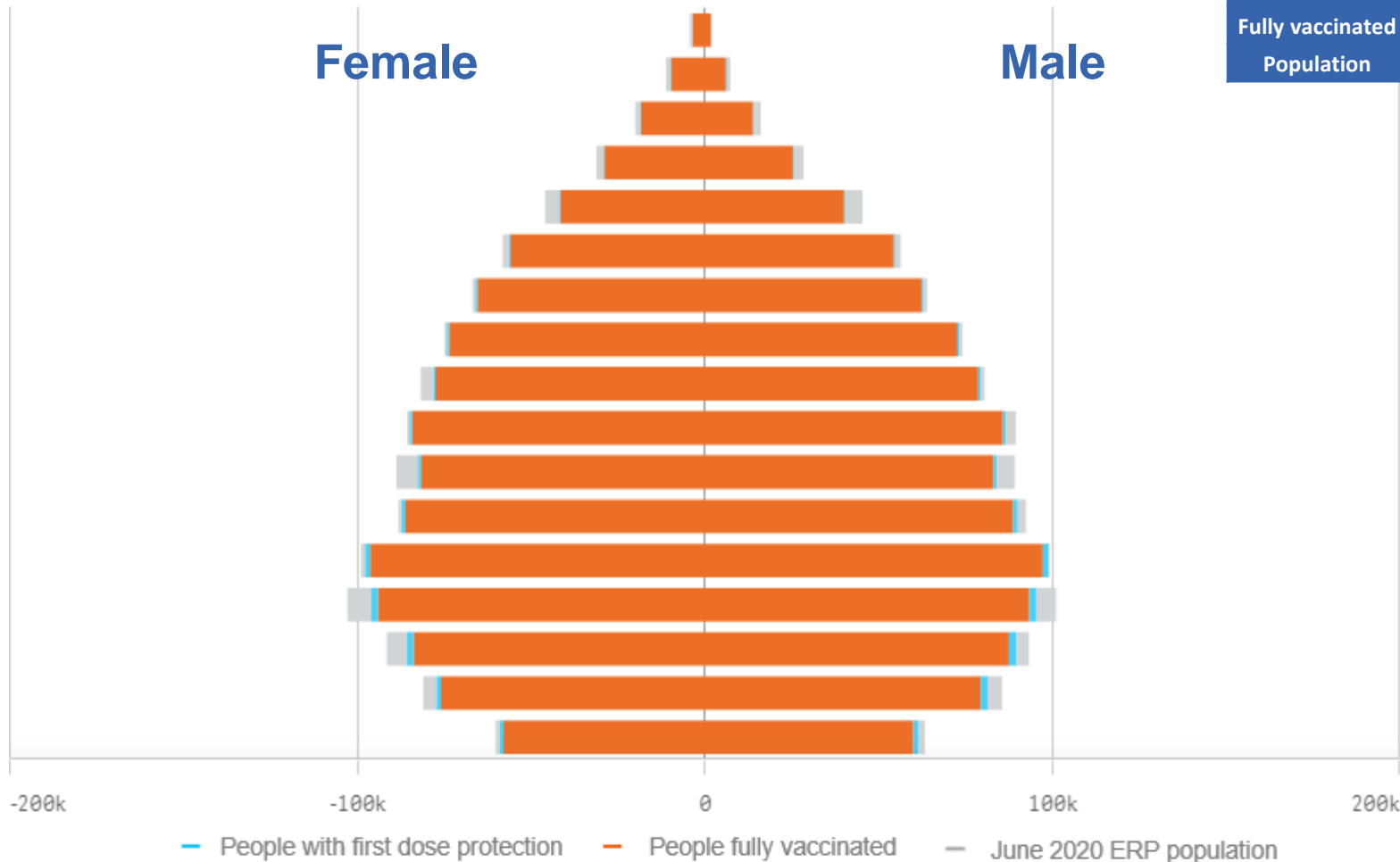


*Administration state breakdown indicates state in which a vaccine was administered and may differ to residential state. Recent weeks may be understated.

Data as at:
28 Jun 2022

Vaccinations by State or Territory of residence

Western Australia



	16+		50+		70+	
At least one dose	>95%	2,100,269	>95%	910,036	>95%	303,692
Fully vaccinated	>95%	2,069,225	>95%	901,147	>95%	300,152
Population	2,114,978		885,370		280,281	

Age	At least one dose	Fully vaccinated
95+	>95%	>95%
90-94	>95%	>95%
85-89	>95%	>95%
80-84	>95%	>95%
75-79	>95%	>95%
70-74	>95%	>95%
65-69	>95%	>95%
60-64	>95%	>95%
55-59	>95%	>95%
50-54	>95%	>95%
45-49	93.67%	92.65%
40-44	>95%	>95%
35-39	>95%	>95%
30-34	94.21%	92.22%
25-29	>95%	93.04%
20-24	>95%	93.40%
16-19	>95%	>95%

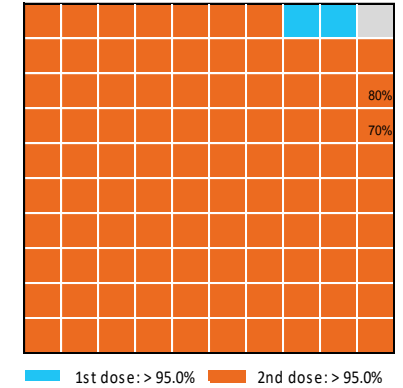
Vaccinations by State – Western Australia

Data as at:
28 Jun 2022

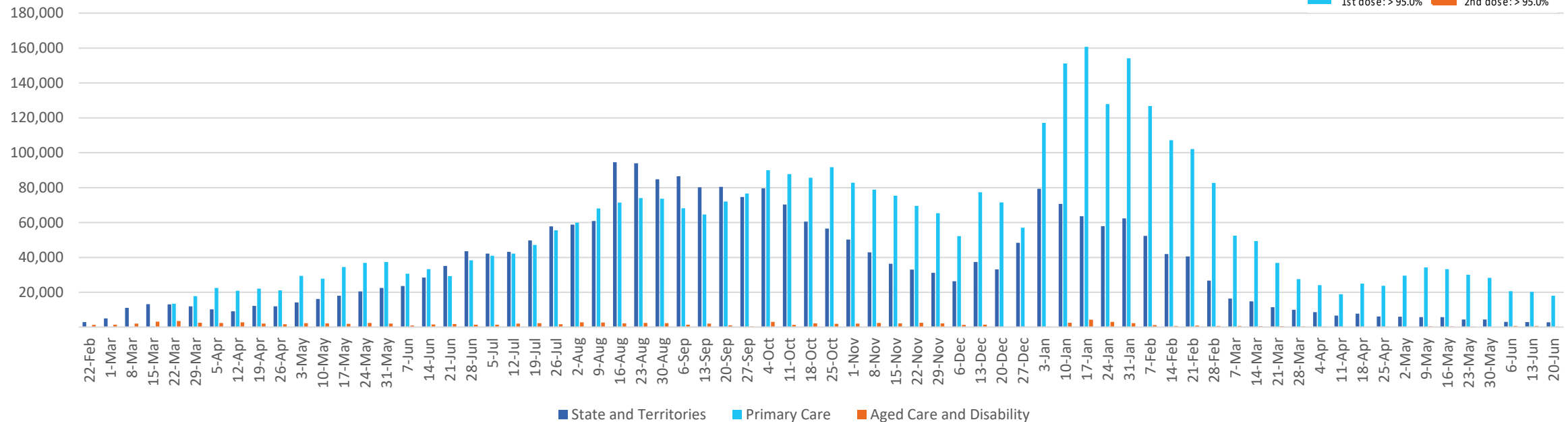
Past 7 days

	22/06/2022	23/06/2022	24/06/2022	25/06/2022	26/06/2022	27/06/2022	28/06/2022	7 day total
State and Territory	561	609	430	391	170	407	649	3,217
Aged Care and Disability	56	56	41	<10	<10	33	97	285
Primary Care	3,836	3,591	3,389	1,276	463	2,933	2,934	18,422
Total (rounded)	4 K	4 K	4 K	2 K	1 K	3 K	4 K	22 K

Eligible population by % coverage



Doses administered by channel



*Administration state breakdown indicates state in which a vaccine was administered and may differ to residential state. Recent weeks may be understated.