



Australian Government
Operation COVID Shield

COVID-19 Vaccine Roll-out Jurisdictional Breakdowns

15 June 2022

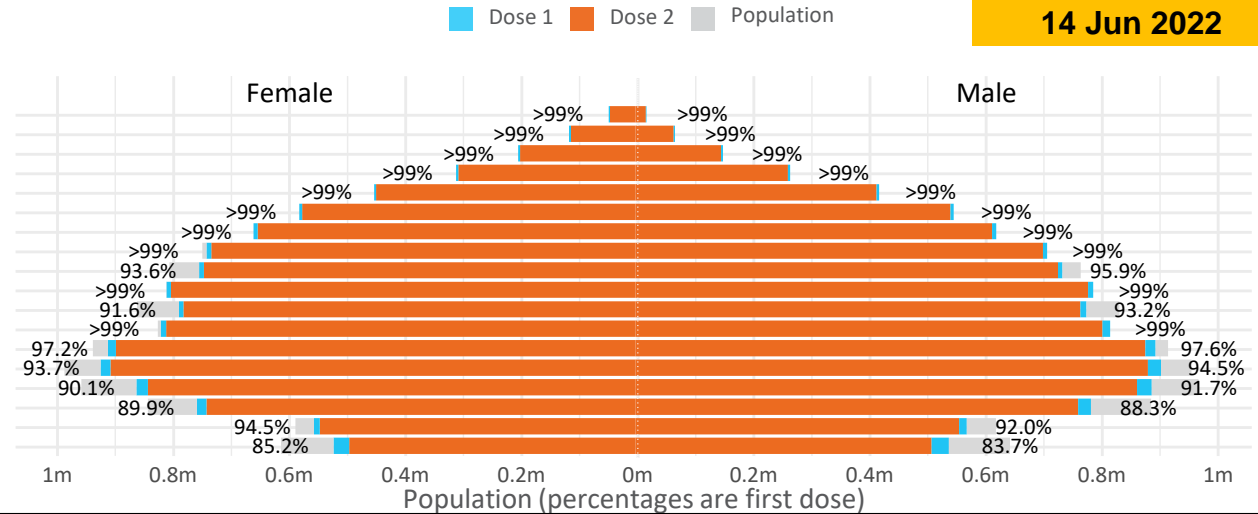
Doses by age and sex

First and second doses by age and sex

	16+	50+	12-15	5-11
Dose 1	97.43% (20,089,823 doses / 20,619,959 people)	>99% (8,912,534 doses / 8,749,703 people)	84.45% (1,050,499 doses / 1,243,990 people)	52.48% (1,194,710 doses / 2,276,638 people)
Dose 2	95.80% (19,754,478 doses / 20,619,959 people)	>99% (8,805,292 doses / 8,749,703 people)	79.95% (994,529 doses / 1,243,990 people)	39.19% (892,133 doses / 2,276,638 people)

Data as at:
14 Jun 2022

Age	Dose 1	Dose 2
95+	64,907 (>99%)	61,477 (>99%)
90-94	181,081 (>99%)	175,568 (>99%)
85-89	349,794 (>99%)	342,997 (>99%)
80-84	570,462 (>99%)	563,294 (>99%)
75-79	862,756 (>99%)	854,345 (>99%)
70-74	1,118,289 (>99%)	1,107,005 (>99%)
65-69	1,269,418 (>99%)	1,254,792 (>99%)
60-64	1,436,840 (>99%)	1,420,459 (98.9%)
55-59	1,475,651 (94.9%)	1,458,984 (93.8%)
50-54	1,583,336 (>99%)	1,566,371 (>99%)
45-49	1,550,967 (92.5%)	1,532,573 (91.4%)
40-44	1,623,826 (>99%)	1,599,824 (98.7%)
35-39	1,792,730 (97.7%)	1,760,580 (95.9%)
30-34	1,818,645 (94.5%)	1,776,784 (92.4%)
25-29	1,743,410 (91.4%)	1,695,704 (88.9%)
20-24	1,532,262 (89.5%)	1,492,243 (87.1%)
16-19	1,115,449 (93.3%)	1,091,478 (91.3%)
12-15	1,050,499 (84.4%)	994,529 (79.9%)



	AUS	ACT	NSW	NT	QLD	SA	TAS	VIC	WA
16 and over - dose 1	20,089,823	353,092	6,336,206	173,890	3,868,118	1,377,352	445,624	5,169,489	2,098,174
16 and over - dose 2	19,754,478	347,395	6,238,635	169,226	3,804,375	1,348,107	436,606	5,091,585	2,067,030
16 and over - population	20,619,959*	344,037	6,565,651	190,571	4,112,707	1,440,400	440,172	5,407,574	2,114,978
16 and over % with dose 1	97.43%	>99%	96.51%	91.25%	94.05%	95.62%	>99%	95.60%	>99%
16 and over % with dose 2	95.80%	>99%	95.02%	88.80%	92.50%	93.59%	>99%	94.16%	97.73%
5 to 11 - dose 1	1,194,710	31,835	356,716	13,174	206,959	83,798	28,501	325,239	140,704
5 to 11 - dose 2	892,133	27,165	272,070	8,686	148,765	62,656	22,961	243,948	101,221
5 to 11 - population	2,276,638	39,789	716,460	24,750	478,731	148,816	45,033	578,499	244,154
5 to 11 % with dose 1	52.48%	80.01%	49.79%	53.23%	43.23%	56.31%	63.29%	56.22%	57.63%
5 to 11 % with dose 2	39.19%	68.27%	37.97%	35.09%	31.07%	42.10%	50.99%	42.17%	41.46%
12 to 15 - dose 1	1,050,499	20,097	323,002	10,761	205,892	68,224	22,872	274,536	115,557
12 to 15 - dose 2	994,529	19,565	308,596	9,705	192,432	64,461	21,746	262,696	107,004
12 to 15 - population	1,243,990	19,693	390,330	13,060	270,146	82,747	26,308	308,611	132,869
12 to 15 % with dose 1	84.45%	>99%	82.75%	82.40%	76.22%	82.45%	86.94%	88.96%	86.97%
12 to 15 % with dose 2	79.95%	>99%	79.06%	74.31%	71.23%	77.90%	82.66%	85.12%	80.53%

*National population will not equal sum of listed jurisdictions due to a small number of people counted in national population residing in some 'other' territories. Sum of state doses will not add to national total as some records are unable to be geocoded to a State or Territory. Doses sourced from Australian Immunisation Register, population from ABS ERP June 2020

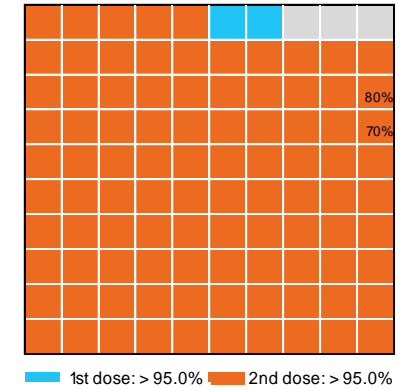
Vaccinations by State – National Summary

Data as at:
14 Jun 2022

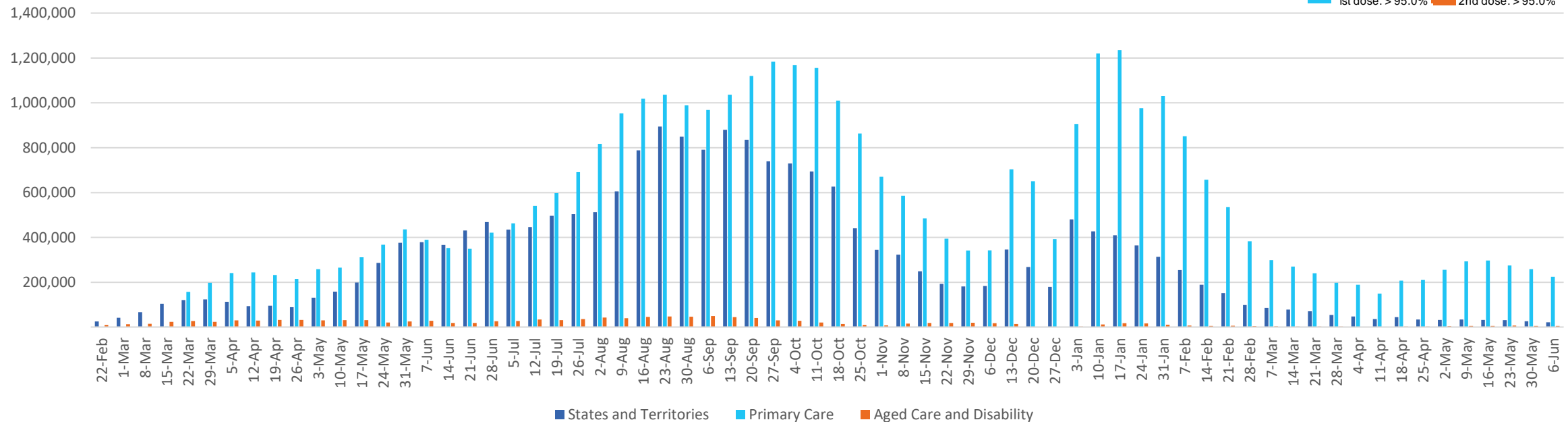
Past 7 days

	08/06/2022	09/06/2022	10/06/2022	11/06/2022	12/06/2022	13/06/2022	14/06/2022	7 day total
State and Territory	4,427	5,119	3,965	3,360	2,143	1,529	4,344	24,887
Aged Care and Disability	1,028	1,431	873	107	<10	144	829	4,415
Primary Care	47,543	48,579	41,471	11,230	4,065	13,298	46,117	212,303
Total (rounded)	53 K	55 K	46 K	15 K	6 K	15 K	51 K	242 K

Eligible population by % coverage



Doses administered by channel

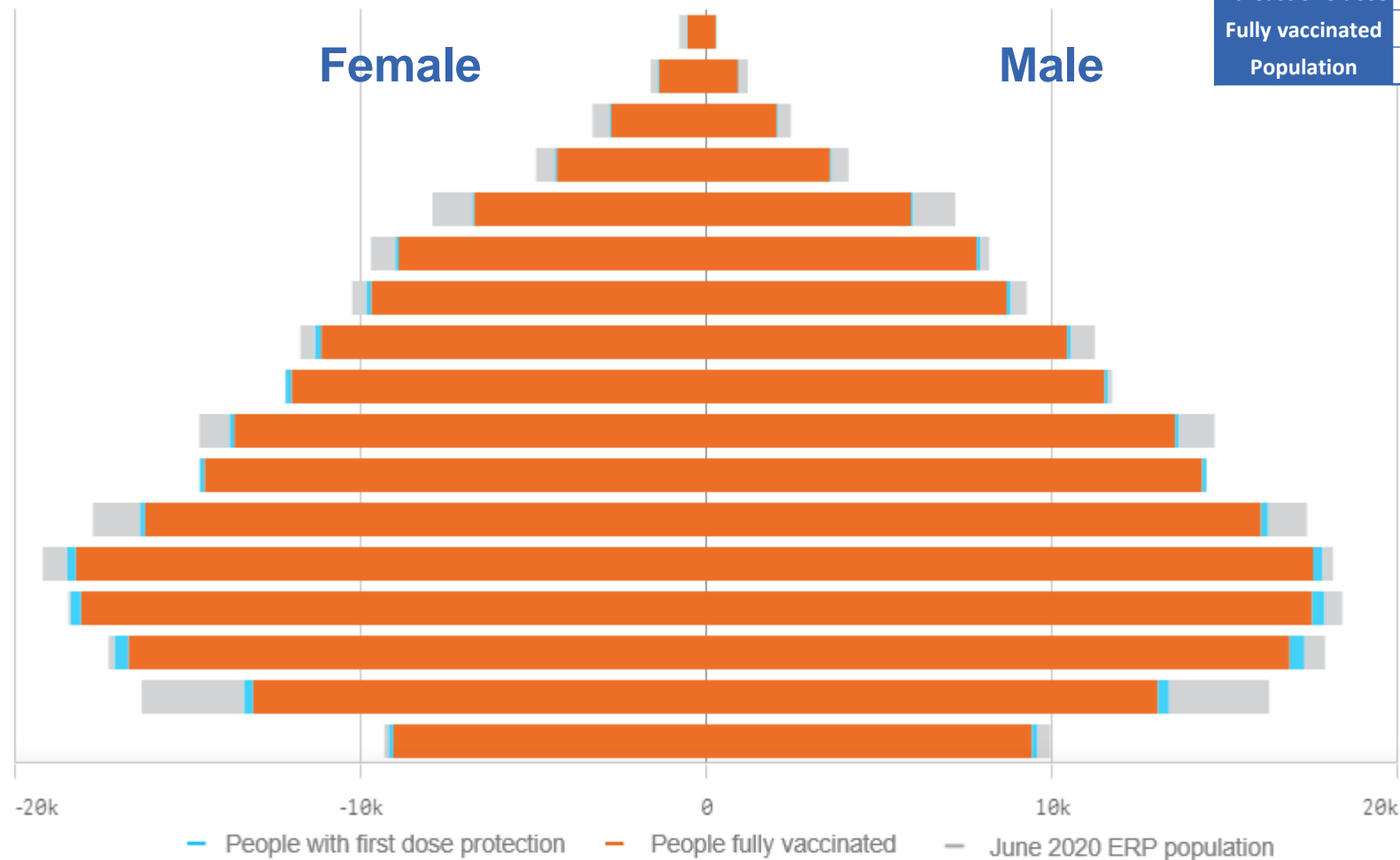


*Administration state breakdown indicates state in which a vaccine was administered and may differ to residential state. Recent weeks may be understated.

Data as at:
14 Jun 2022

Vaccinations by State or Territory of residence

Australian Capital Territory



	16+	50+	70+
At least one dose	>95% 353,092	>95% 137,919	>95% 45,914
Fully vaccinated	>95% 347,395	>95% 136,080	>95% 45,259
Population	344,037	127,802	39,946

Age	At least one dose	Fully vaccinated
95+	>95%	>95%
90-94	>95%	>95%
85-89	>95%	>95%
80-84	>95%	>95%
75-79	>95%	>95%
70-74	>95%	>95%
65-69	>95%	>95%
60-64	>95%	>95%
55-59	>95%	>95%
50-54	>95%	>95%
45-49	>95%	>95%
40-44	>95%	>95%
35-39	>95%	>95%
30-34	>95%	>95%
25-29	>95%	>95%
20-24	82.61%	80.57%
16-19	>95%	>95%

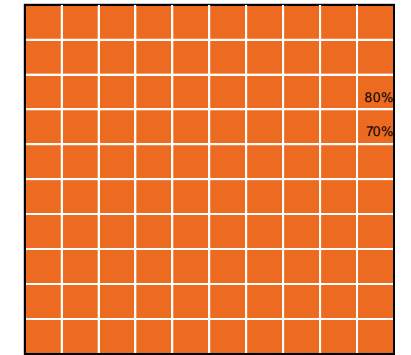
Vaccinations by State – Australian Capital Territory

Data as at:
14 Jun 2022

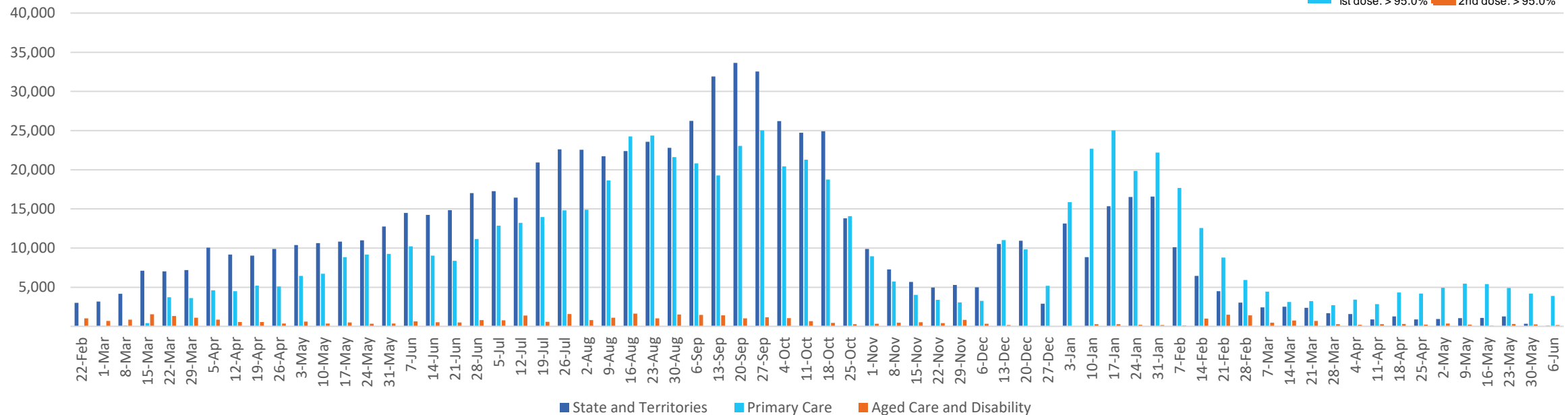
Past 7 days

	08/06/2022	09/06/2022	10/06/2022	11/06/2022	12/06/2022	13/06/2022	14/06/2022	7 day total
State and Territory	676	545	512	160	56	254	548	2,751
Aged Care and Disability	14	57	59	<10	<10	<10	<10	130**
Primary Care	696	800	871	231	108	69	889	3,664
Total (rounded)	1 K	1 K	1 K	0 K	0 K	0 K	1 K	7 K

Eligible population by % coverage



Doses administered by channel



*Administration state breakdown indicates state in which a vaccine was administered and may differ to residential state. Recent weeks may be understated.

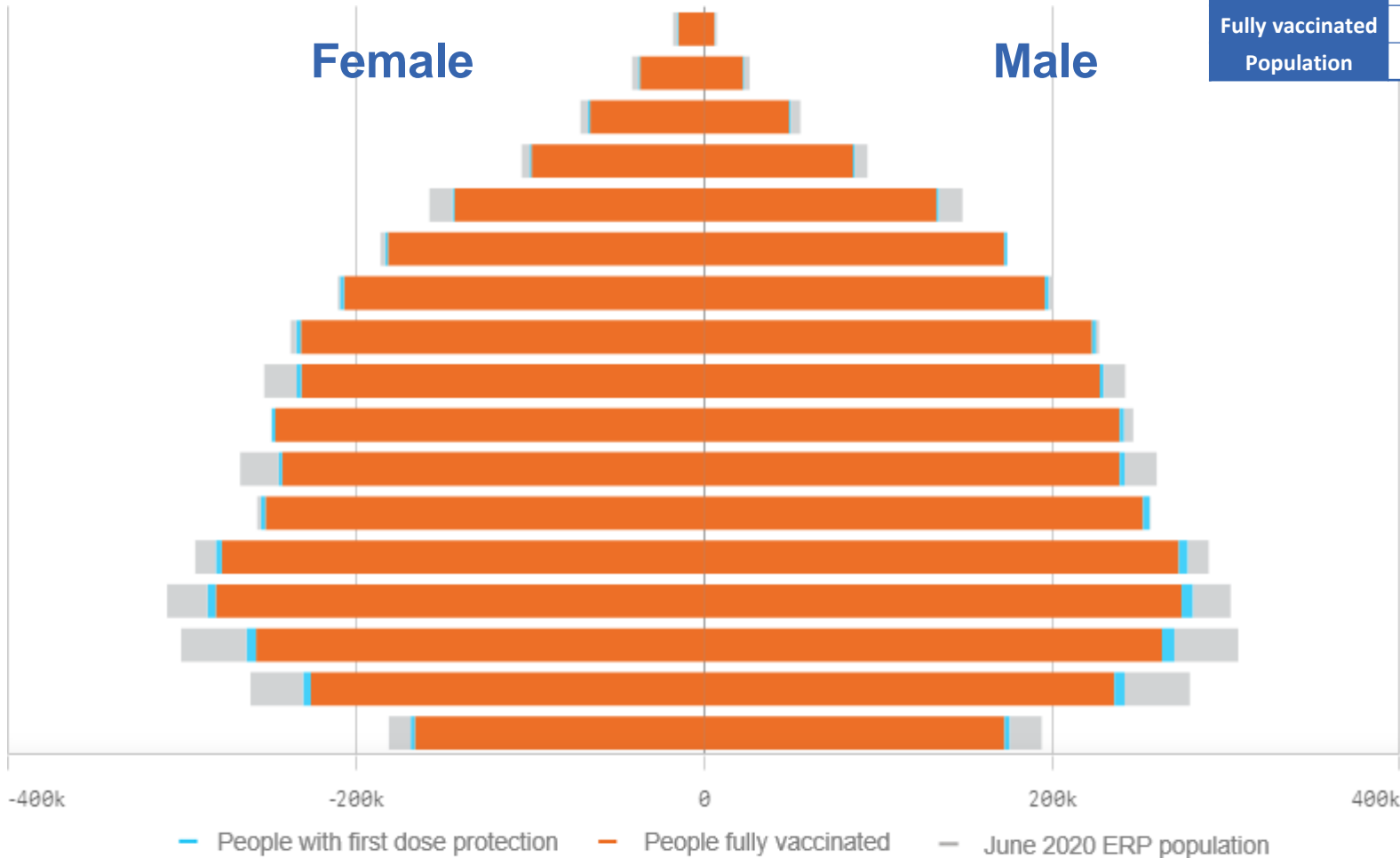
**Total appears lower due to historic changes.

Data as at:
14 Jun 2022

Vaccinations by State or Territory of residence

New South Wales

	16+	50+	70+
At least one dose	>95% 6,336,206	>95% 2,849,690	>95% 1,024,797
Fully vaccinated	>95% 6,238,635	>95% 2,815,923	>95% 1,011,449
Population	6,565,651	2,807,793	962,606



Age	At least one dose	Fully vaccinated
95+	>95%	>95%
90-94	>95%	>95%
85-89	>95%	>95%
80-84	>95%	>95%
75-79	>95%	>95%
70-74	>95%	>95%
65-69	>95%	>95%
60-64	>95%	>95%
55-59	93.87%	92.81%
50-54	>95%	>95%
45-49	92.45%	91.46%
40-44	>95%	>95%
35-39	>95%	94.64%
30-34	93.16%	91.16%
25-29	88.36%	86.10%
20-24	87.83%	85.77%
16-19	91.85%	90.37%

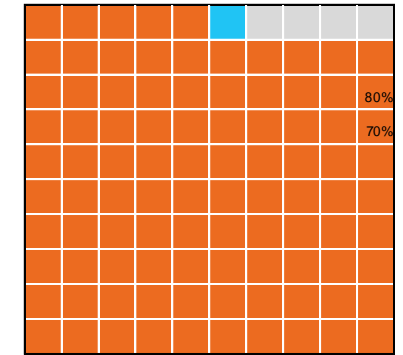
Vaccinations by State – New South Wales

Data as at:
14 Jun 2022

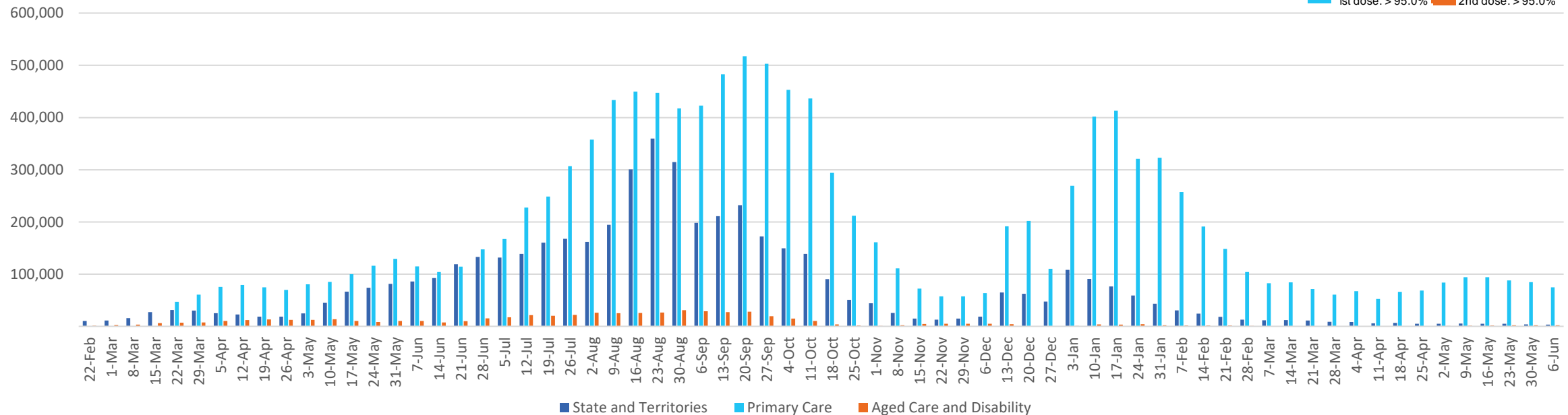
Past 7 days

	08/06/2022	09/06/2022	10/06/2022	11/06/2022	12/06/2022	13/06/2022	14/06/2022	7 day total
State and Territory	313	964	85	941	1,033	228	502	4,066
Aged Care and Disability	546	681	378	<10	<10	<10	301	1,908**
Primary Care	15,668	16,361	14,252	3,718	983	857	16,018	67,857
Total (rounded)	17 K	18 K	15 K	5 K	2 K	1 K	17 K	74 K

Eligible population by % coverage



Doses administered by channel



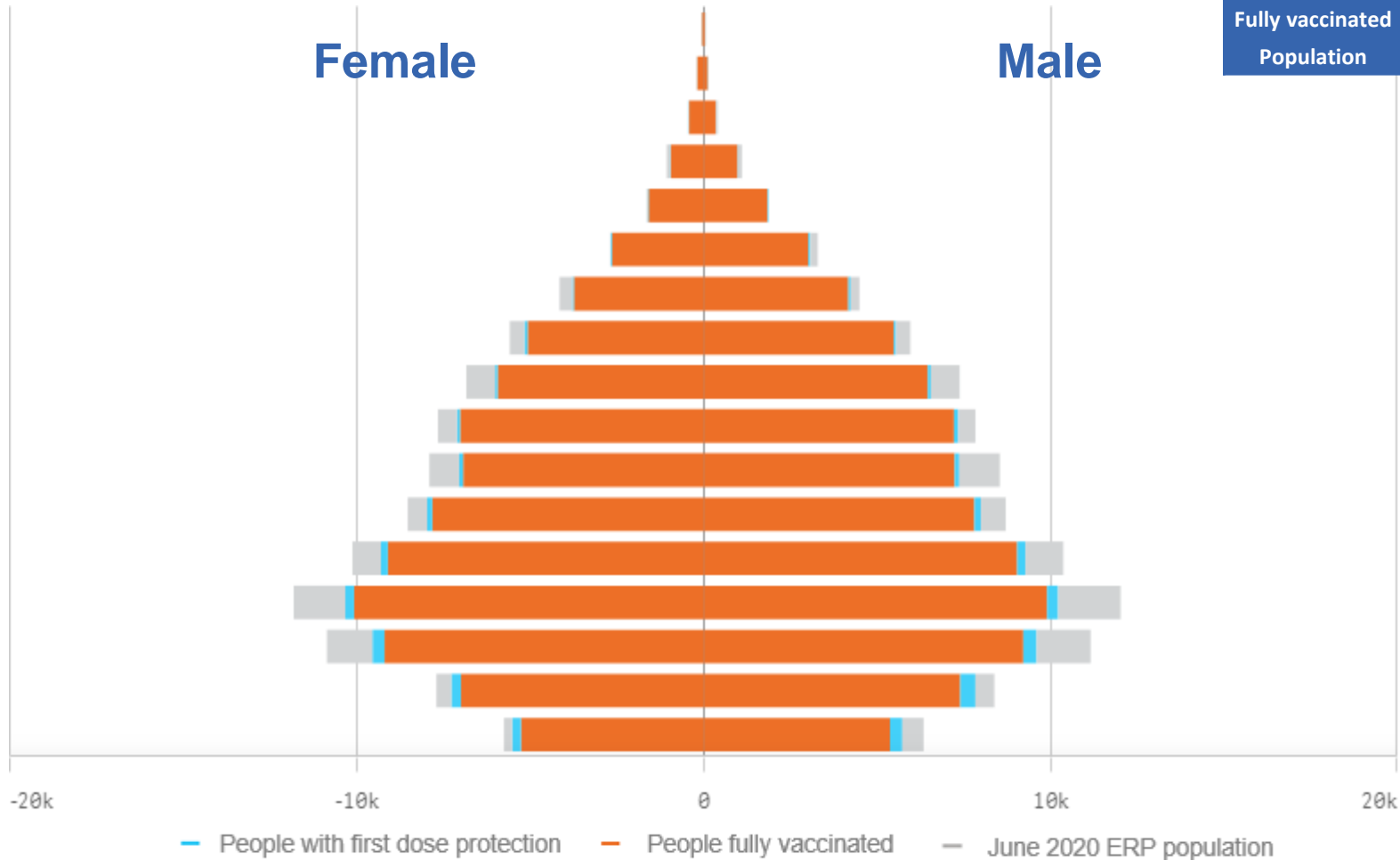
*Administration state breakdown indicates state in which a vaccine was administered and may differ to residential state. Recent weeks may be understated.

**Total appears lower due to historic changes.

Data as at:
14 Jun 2022

Vaccinations by State or Territory of residence

Northern Territory



	16+		50+		70+	
At least one dose	91.25%	173,890	93.59%	58,289	>95%	12,436
Fully vaccinated	88.80%	169,226	92.17%	57,404	>95%	12,212
Population		190,571		62,280		12,343

Age	At least one dose	Fully vaccinated
95+	>95%	93.81%
90-94	>95%	>95%
85-89	>95%	>95%
80-84	>95%	>95%
75-79	>95%	>95%
70-74	>95%	>95%
65-69	92.95%	91.68%
60-64	92.94%	91.54%
55-59	88.43%	87.27%
50-54	93.48%	92.02%
45-49	87.86%	86.27%
40-44	92.89%	90.88%
35-39	91.03%	88.79%
30-34	86.83%	84.28%
25-29	87.67%	84.20%
20-24	94.22%	89.71%
16-19	93.06%	87.99%

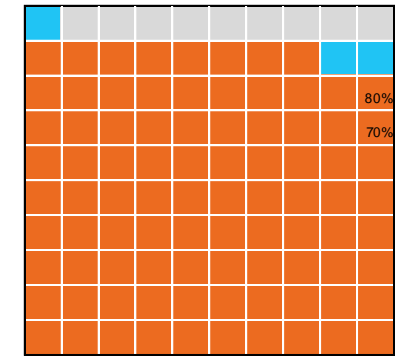
Vaccinations by State – Northern Territory

Data as at:
14 Jun 2022

Past 7 days

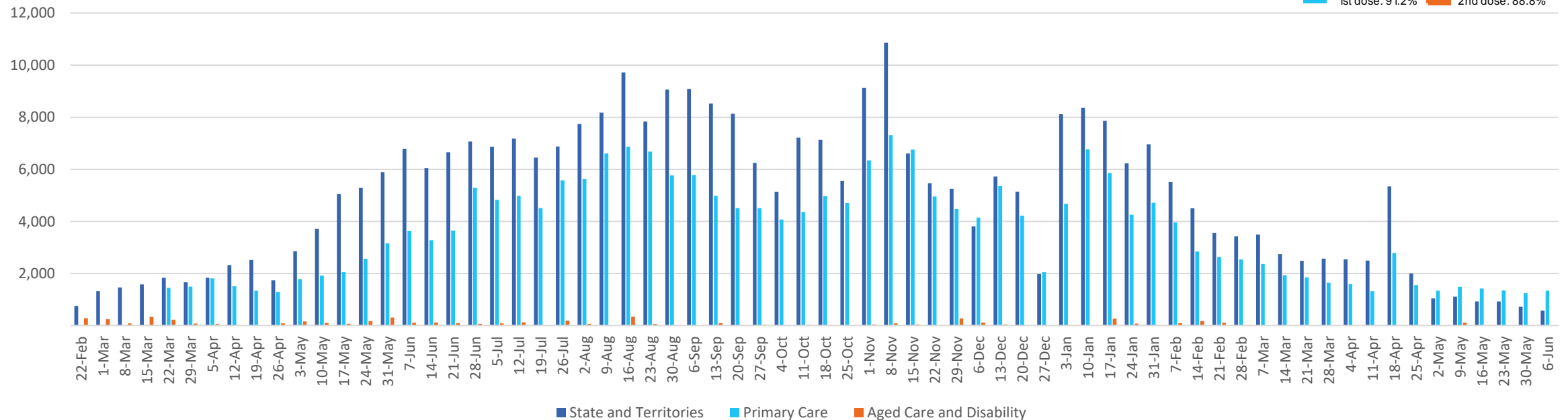
	08/06/2022	09/06/2022	10/06/2022	11/06/2022	12/06/2022	13/06/2022	14/06/2022	7 day total
State and Territory	113	96	123	75	<10	11	95	522
Aged Care and Disability	<10	<10	<10	<10	<10	<10	<10	<10
Primary Care	316	281	302	95	<10	<10	328	1,325
Total (rounded)	0 K	0 K	0 K	0 K	0 K	0 K	0 K	2 K

Eligible population by % coverage



1st dose: 91.2% 2nd dose: 88.8%

Doses administered by channel



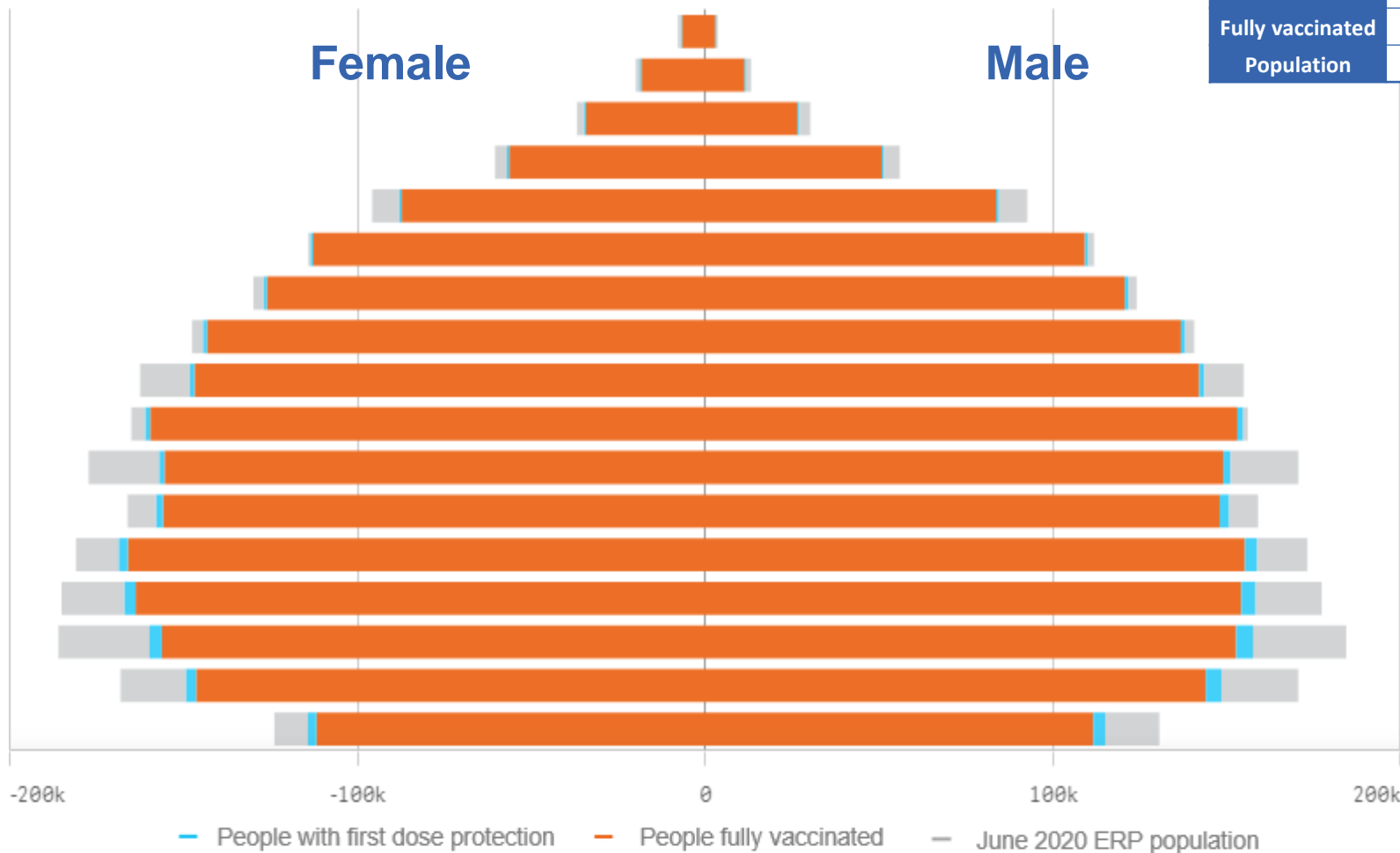
*Administration state breakdown indicates state in which a vaccine was administered and may differ to residential state. Recent weeks may be understated.

Data as at:
14 Jun 2022

Vaccinations by State or Territory of residence

Queensland

	16+	50+	70+
At least one dose	94.05% 3,868,118	>95% 1,748,449	>95% 608,371
Fully vaccinated	92.50% 3,804,375	>95% 1,730,154	>95% 600,934
Population	4,112,707	1,758,855	577,767



Age	At least one dose	Fully vaccinated
95+	>95%	>95%
90-94	>95%	>95%
85-89	>95%	>95%
80-84	>95%	>95%
75-79	>95%	>95%
70-74	>95%	>95%
65-69	>95%	>95%
60-64	>95%	>95%
55-59	91.98%	91.09%
50-54	>95%	>95%
45-49	88.64%	87.58%
40-44	>95%	93.54%
35-39	92.66%	90.85%
30-34	90.11%	87.94%
25-29	86.06%	83.68%
20-24	88.18%	85.88%
16-19	90.17%	87.82%

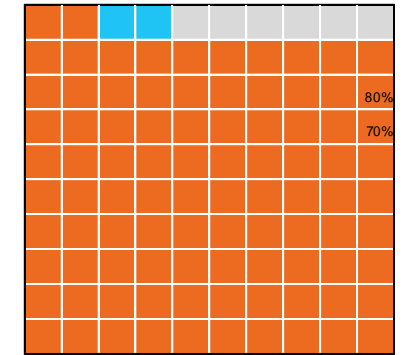
Vaccinations by State – Queensland

Data as at:
14 Jun 2022

Past 7 days

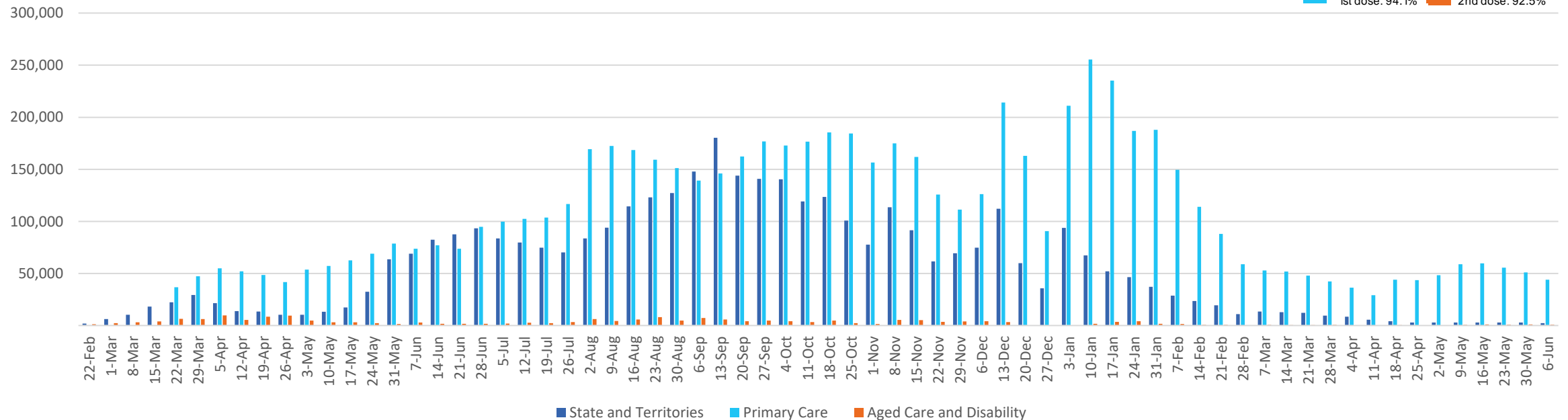
	08/06/2022	09/06/2022	10/06/2022	11/06/2022	12/06/2022	13/06/2022	14/06/2022	7 day total
State and Territory	577	463	512	277	59	203	461	2,552
Aged Care and Disability	236	225	154	49	<10	<10	126	791
Primary Care	8,848	9,591	7,289	1,891	1,315	7,127	9,068	45,129
Total (rounded)	10 K	10 K	8 K	2 K	1 K	7 K	10 K	48 K

Eligible population by % coverage



1st dose: 94.1% 2nd dose: 92.5%

Doses administered by channel

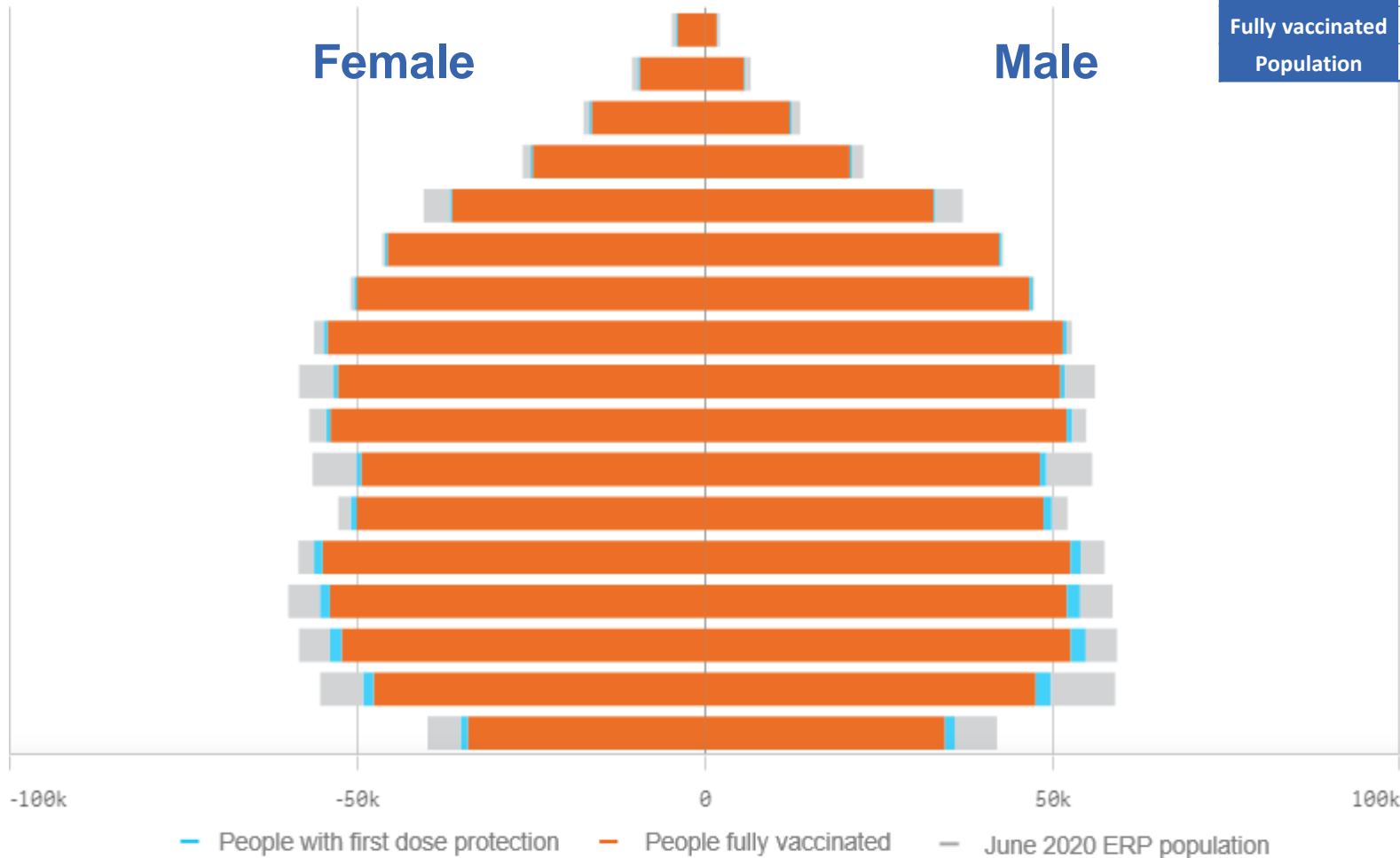


*Administration state breakdown indicates state in which a vaccine was administered and may differ to residential state. Recent weeks may be understated.

Data as at:
14 Jun 2022

Vaccinations by State or Territory of residence

South Australia



	16+		50+		70+	
At least one dose	>95%	1,377,352	>95%	674,004	>95%	255,950
Fully vaccinated	93.59%	1,348,107	>95%	665,587	>95%	252,464
Population	1,440,400		674,384		240,514	

Age	At least one dose	Fully vaccinated
95+	>95%	>95%
90-94	>95%	>95%
85-89	>95%	>95%
80-84	>95%	>95%
75-79	>95%	>95%
70-74	>95%	>95%
65-69	>95%	>95%
60-64	>95%	>95%
55-59	92.03%	90.90%
50-54	>95%	94.85%
45-49	88.59%	87.14%
40-44	>95%	94.34%
35-39	>95%	93.09%
30-34	93.06%	90.04%
25-29	93.60%	90.05%
20-24	87.39%	83.94%
16-19	86.94%	83.89%

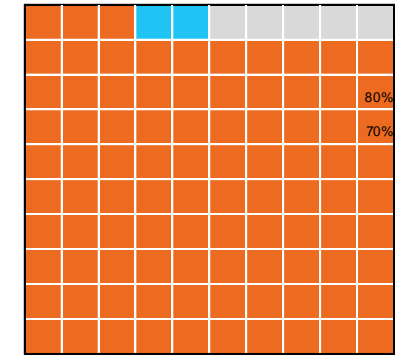
Vaccinations by State – South Australia

Data as at:
14 Jun 2022

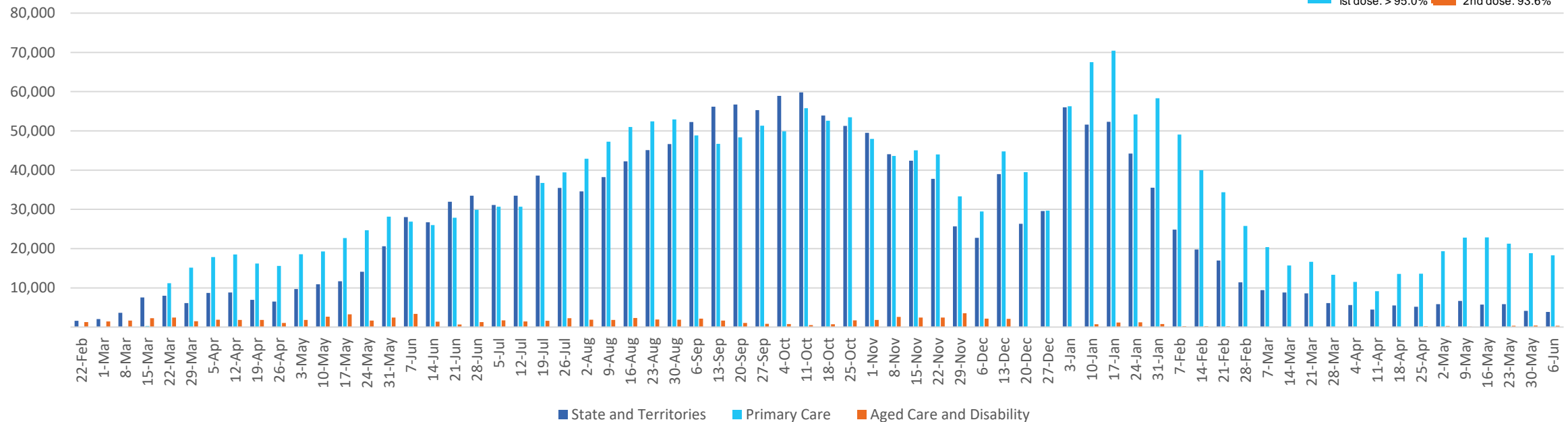
Past 7 days

	08/06/2022	09/06/2022	10/06/2022	11/06/2022	12/06/2022	13/06/2022	14/06/2022	7 day total
State and Territory	781	735	768	482	300	64	594	3,724
Aged Care and Disability	61	96	63	52	<10	<10	103	375
Primary Care	3,996	3,456	3,025	722	253	157	3,216	14,825
Total (rounded)	5 K	4 K	4 K	1 K	1 K	0 K	4 K	19 K

Eligible population by % coverage



Doses administered by channel

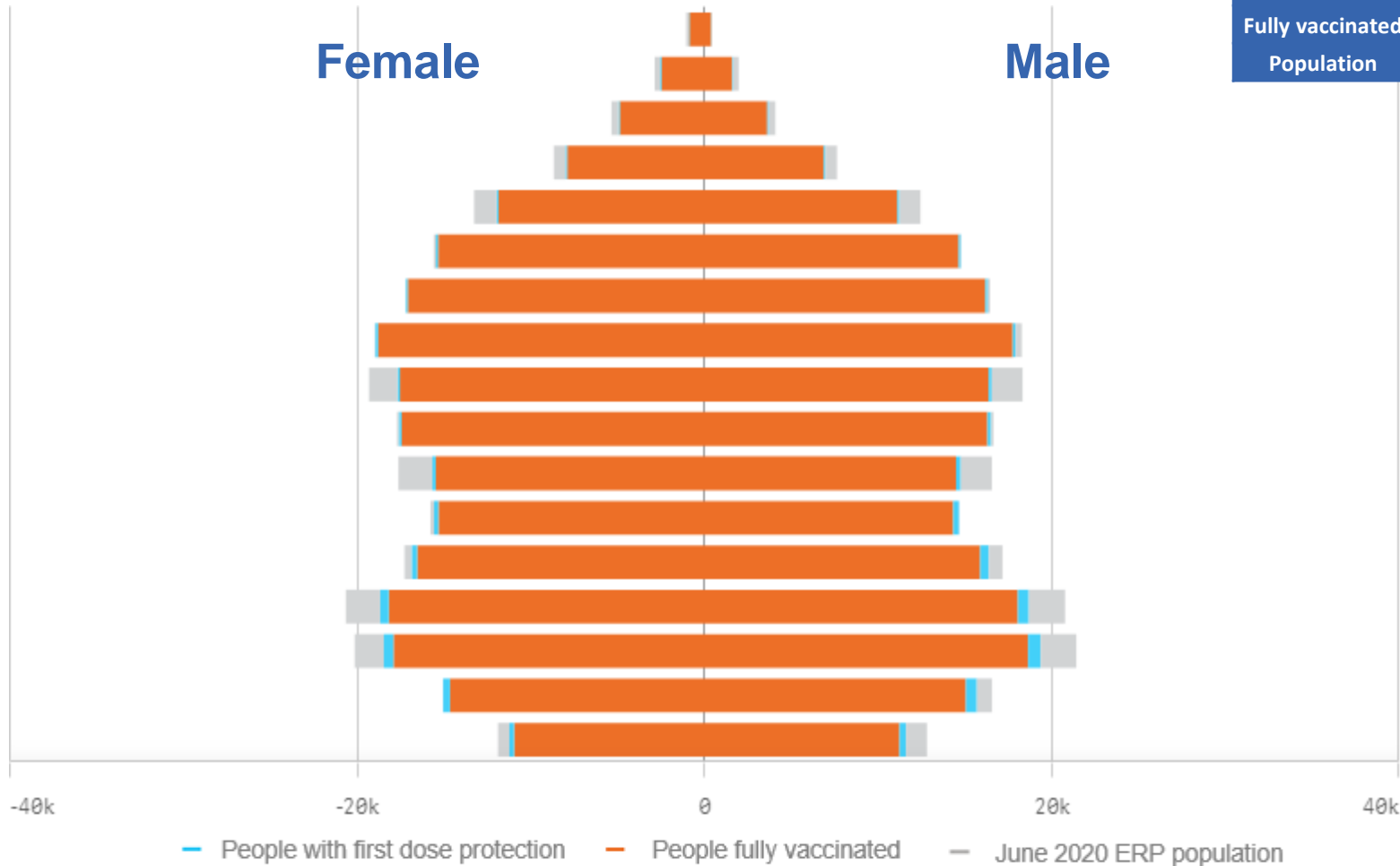


*Administration state breakdown indicates state in which a vaccine was administered and may differ to residential state. Recent weeks may be understated.

Data as at:
14 Jun 2022

Vaccinations by State or Territory of residence

Tasmania



	16+		50+		70+	
At least one dose	>95%	445,624	>95%	221,656	>95%	82,716
Fully vaccinated	>95%	436,606	>95%	219,233	>95%	81,641
Population	440,172		220,036		77,155	

Age	At least one dose	Fully vaccinated
95+	>95%	>95%
90-94	>95%	>95%
85-89	>95%	>95%
80-84	>95%	>95%
75-79	>95%	>95%
70-74	>95%	>95%
65-69	>95%	>95%
60-64	>95%	>95%
55-59	91.01%	90.10%
50-54	>95%	>95%
45-49	89.20%	87.73%
40-44	>95%	>95%
35-39	>95%	>95%
30-34	>95%	>95%
25-29	>95%	>95%
20-24	>95%	94.15%
16-19	92.56%	89.90%

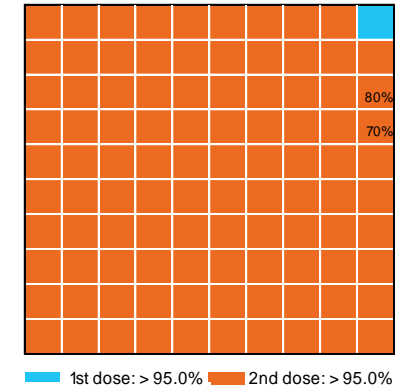
Vaccinations by State – Tasmania

Data as at:
14 Jun 2022

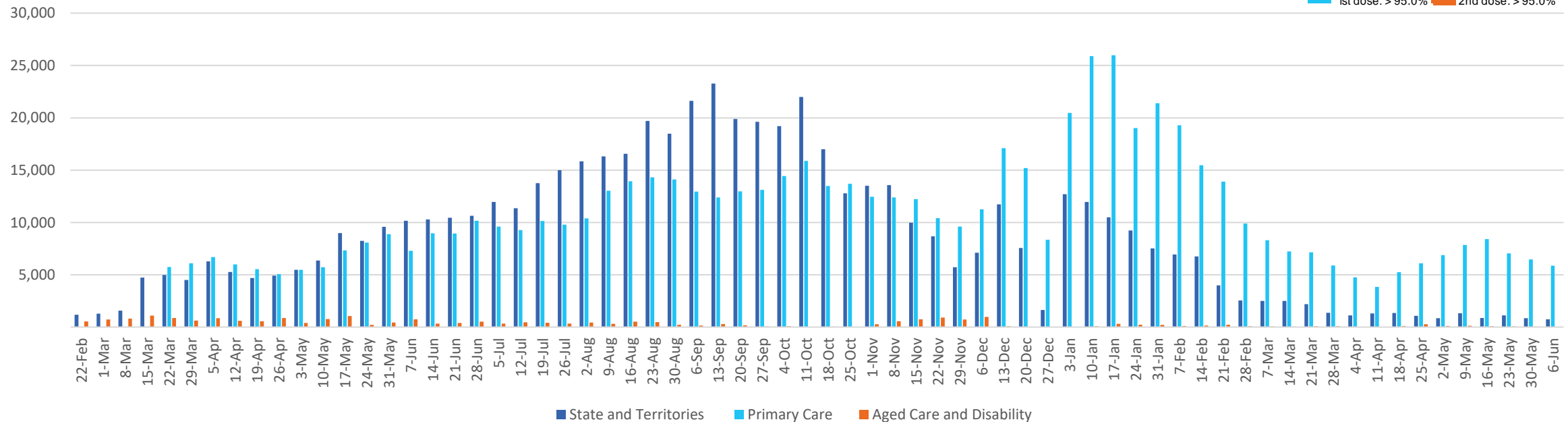
Past 7 days

	08/06/2022	09/06/2022	10/06/2022	11/06/2022	12/06/2022	13/06/2022	14/06/2022	7 day total
State and Territory	145	117	75	176	157	<10	130	801
Aged Care and Disability	18	<10	<10	<10	<10	<10	<10	21
Primary Care	1,286	1,000	975	185	41	126	1,056	4,669
Total (rounded)	1 K	1 K	1 K	0 K	0 K	0 K	1 K	5 K

Eligible population by % coverage



Doses administered by channel

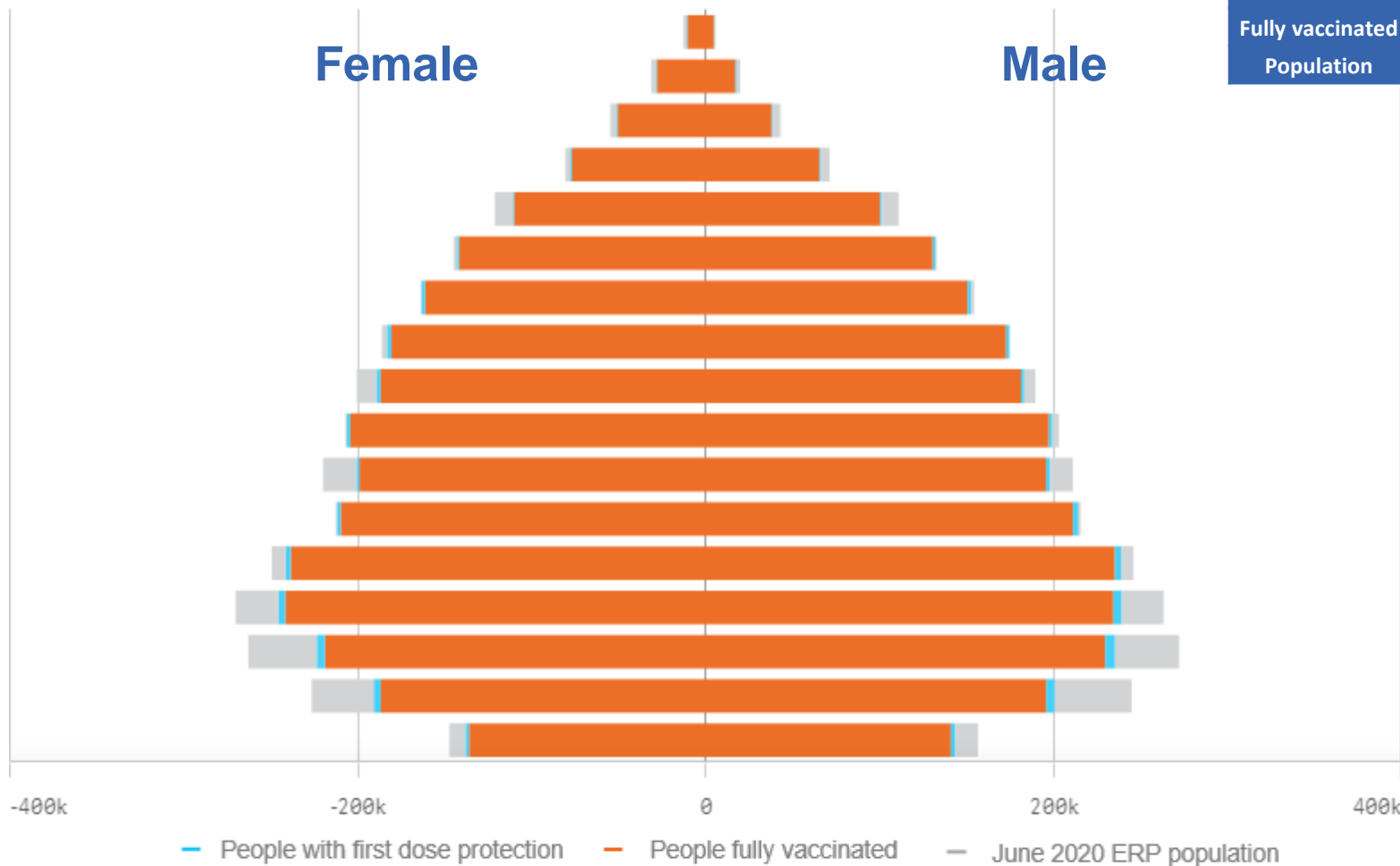


*Administration state breakdown indicates state in which a vaccine was administered and may differ to residential state. Recent weeks may be understated.

Data as at:
14 Jun 2022

Vaccinations by State or Territory of residence

Victoria



	16+		50+		70+	
At least one dose	>95%	5,169,489	>95%	2,240,569	>95%	786,552
Fully vaccinated	94.16%	5,091,585	>95%	2,212,641	>95%	775,934
Population	5,407,574		2,211,211		743,519	

Age	At least one dose	Fully vaccinated
95+	>95%	>95%
90-94	>95%	>95%
85-89	>95%	>95%
80-84	>95%	>95%
75-79	>95%	>95%
70-74	>95%	>95%
65-69	>95%	>95%
60-64	>95%	>95%
55-59	>95%	94.43%
50-54	>95%	>95%
45-49	92.56%	91.61%
40-44	>95%	>95%
35-39	>95%	>95%
30-34	91.13%	89.40%
25-29	86.10%	84.08%
20-24	83.25%	81.30%
16-19	92.73%	91.22%

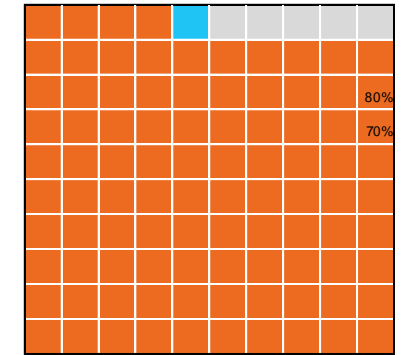
Vaccinations by State – Victoria

Data as at:
14 Jun 2022

Past 7 days

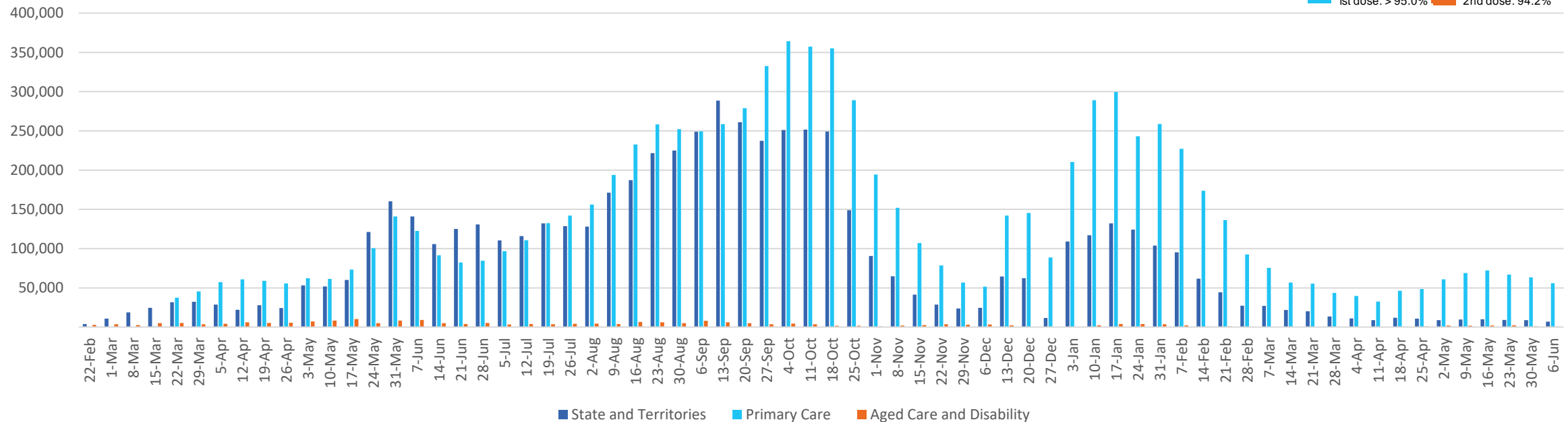
	08/06/2022	09/06/2022	10/06/2022	11/06/2022	12/06/2022	13/06/2022	14/06/2022	7 day total
State and Territory	1,128	1,432	1,275	894	367	247	1,389	6,732
Aged Care and Disability	78	115	35	<10	<10	37	81	347
Primary Care	11,748	12,128	10,825	2,819	857	978	11,666	51,021
Total (rounded)	13 K	14 K	12 K	4 K	1 K	1 K	13 K	58 K

Eligible population by % coverage



1st dose: > 95.0% 2nd dose: 94.2%

Doses administered by channel

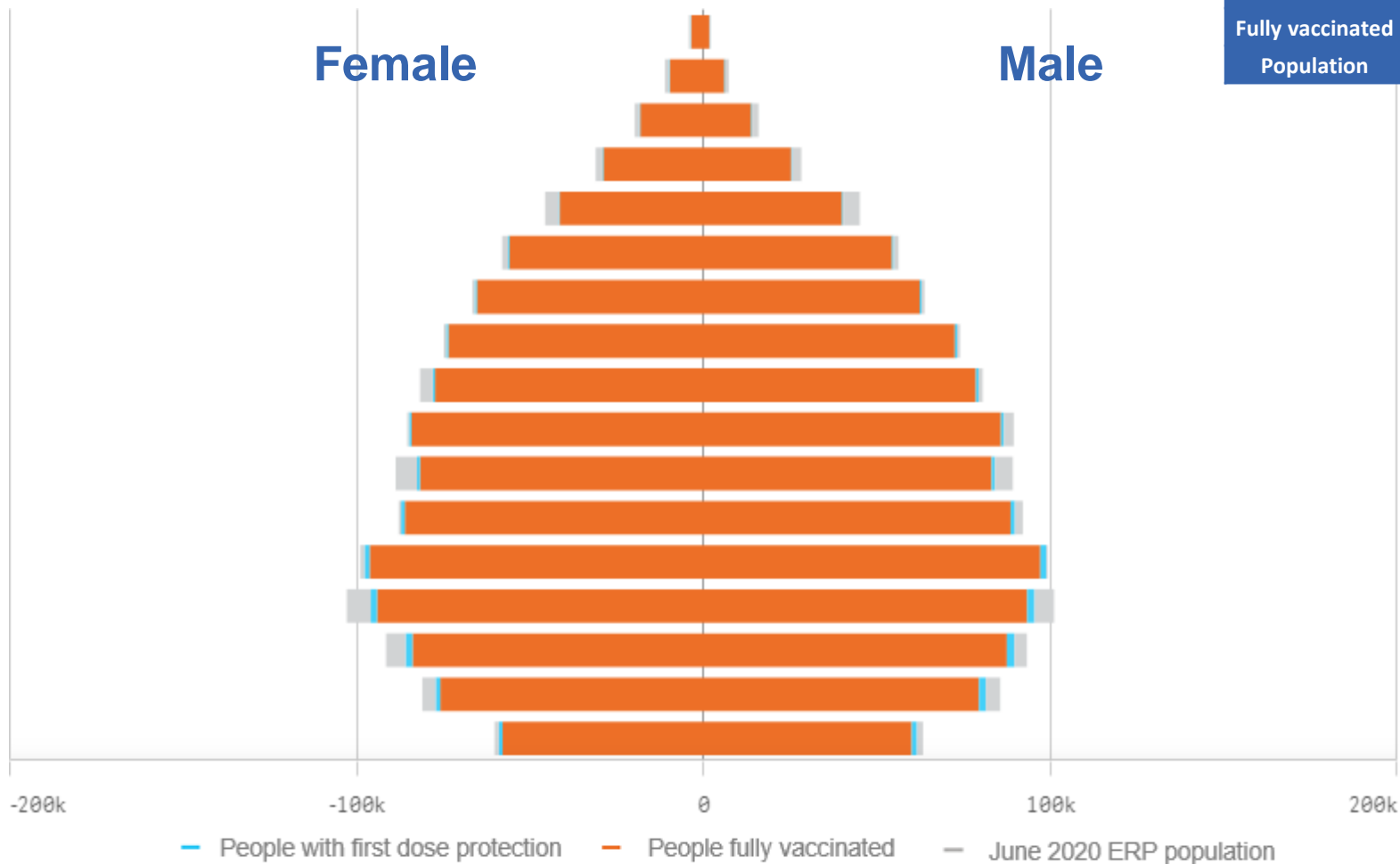


*Administration state breakdown indicates state in which a vaccine was administered and may differ to residential state. Recent weeks may be understated.

Data as at:
14 Jun 2022

Vaccinations by State or Territory of residence

Western Australia



	16+		50+		70+	
At least one dose	>95%	2,098,174	>95%	908,384	>95%	302,749
Fully vaccinated	>95%	2,067,030	>95%	899,498	>95%	299,206
Population	2,114,978		885,370		280,281	

Age	At least one dose	Fully vaccinated
95+	>95%	>95%
90-94	>95%	>95%
85-89	>95%	>95%
80-84	>95%	>95%
75-79	>95%	>95%
70-74	>95%	>95%
65-69	>95%	>95%
60-64	>95%	>95%
55-59	>95%	>95%
50-54	>95%	>95%
45-49	93.71%	92.68%
40-44	>95%	>95%
35-39	>95%	>95%
30-34	94.19%	92.20%
25-29	>95%	93.04%
20-24	>95%	93.41%
16-19	>95%	>95%

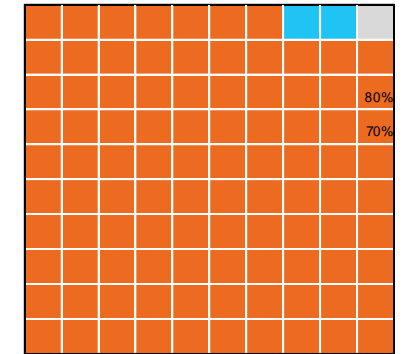
Vaccinations by State – Western Australia

Data as at:
14 Jun 2022

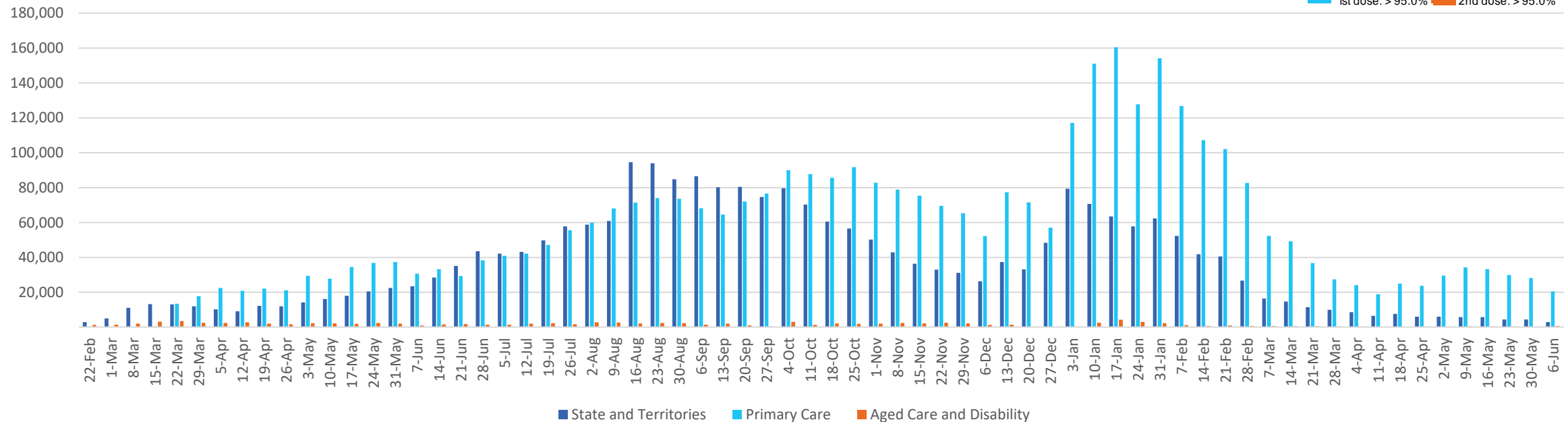
Past 7 days

	08/06/2022	09/06/2022	10/06/2022	11/06/2022	12/06/2022	13/06/2022	14/06/2022	7 day total
State and Territory	694	767	615	355	162	521	625	3,739
Aged Care and Disability	75	257	183	<10	<10	108	217	843
Primary Care	4,985	4,962	3,932	1,569	505	3,984	3,876	23,813
Total (rounded)	6 K	6 K	5 K	2 K	1 K	5 K	5 K	28 K

Eligible population by % coverage



Doses administered by channel



*Administration state breakdown indicates state in which a vaccine was administered and may differ to residential state. Recent weeks may be understated.