



**Australian Government**  
**Operation COVID Shield**

# COVID-19 Vaccine Roll-out

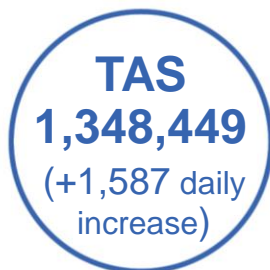
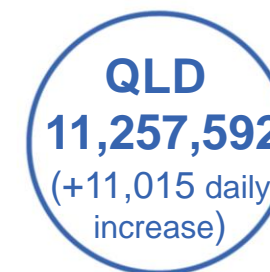
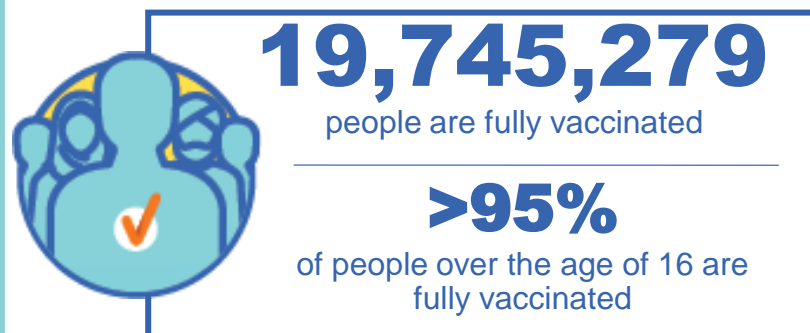
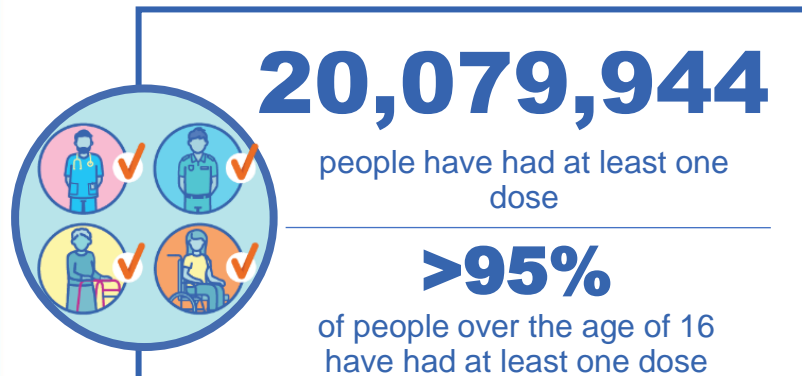
08 June 2022

Data as at:  
07 Jun 2022

## Total vaccine doses



**59,532,043** total vaccine  
doses administered nationally as at 07 June  
**+56,172** recorded in the last 24 hours

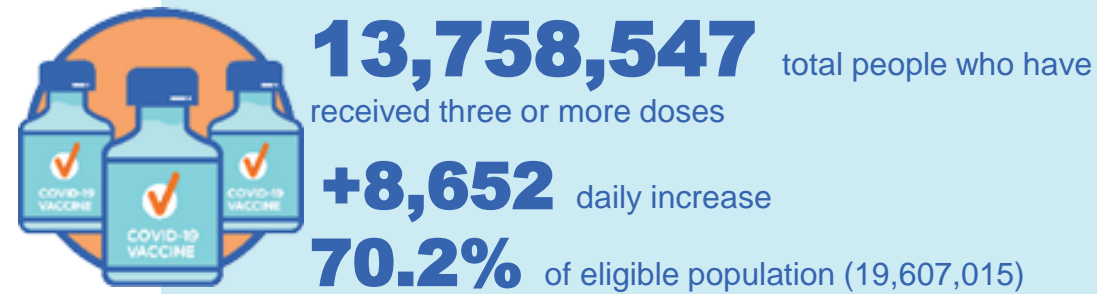
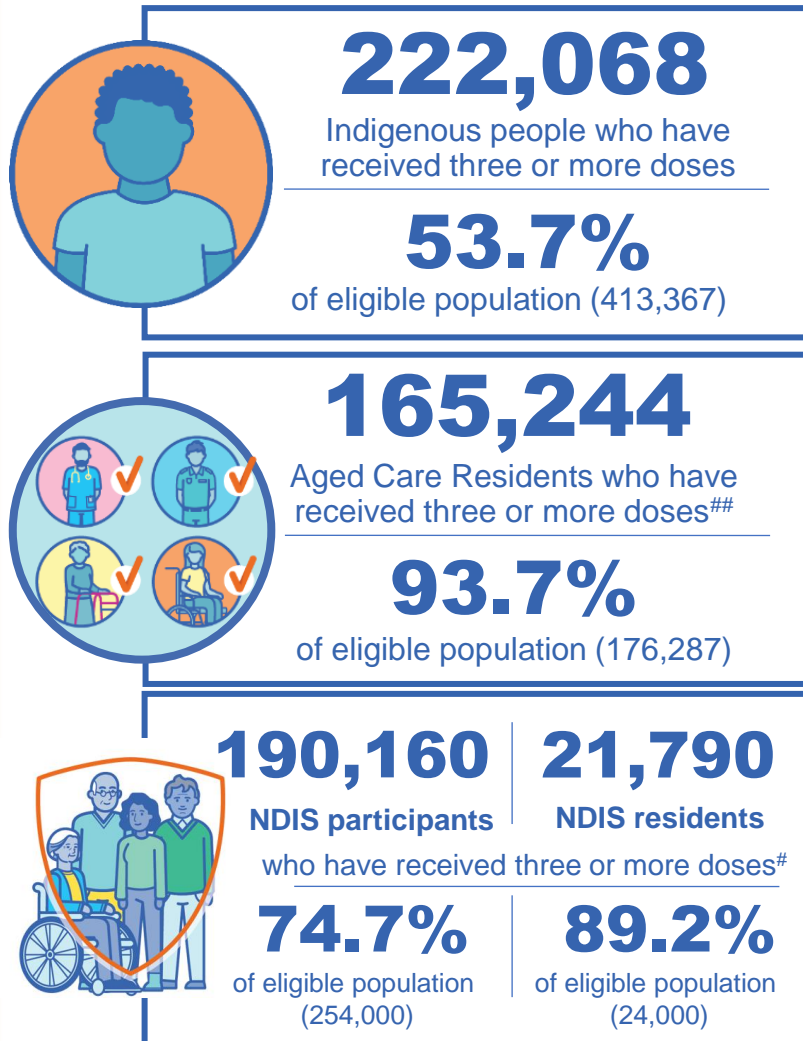


\*Administration state breakdown indicates state in which a vaccine was administered

\*\*Overall dose count includes instances of more than three doses per person in a small number of cases.

Source: Australian Immunisation Register

## Booster Vaccinations



Data as at:  
07 Jun 2022

	Number of People	Daily Increase	% of Eligible
NSW	4,196,664	2,630	67.5%
VIC	3,671,852	2,105	72.4%
QLD	2,381,970	1,702	63.2%
WA	1,691,500	880	83.2%
SA	980,949	817	73.6%
TAS	314,577	253	72.7%
ACT	272,110	133	78.6%
NT	130,345	113	77.8%

\*People may belong to multiple groups and could be represented in the above breakdowns multiple times.  
# NDIS participants data as at 6 June 2022. ## Aged Care Residents data as at 7 June 2022.

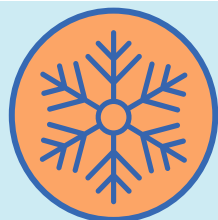
Source: Australian Immunisation Register

**118,580** doses administered to persons residing in other territories or with missing residential information

# Winter / Fourth Doses

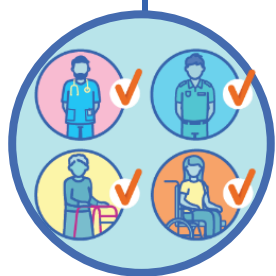
Data as at:  
07 Jun 2022

Australia's COVID-19  
Vaccine Roadmap



**1,784,532** total people (16+) who have received four or more doses

**+43,737** daily increase



**1,587,094**

People aged 65+ who have  
received four or more doses

**51.9%**

of eligible population (3,058,878)

	Number of People 16+	Daily Increase
ACT	36,792	647
NSW	577,756	13,280
NT	7,824	261
QLD	338,950	8,525
SA	143,803	3,889
TAS	50,114	1,319
VIC	449,039	10,935
WA	171,637	4,664

**8,617** doses administered to persons  
residing in other territories or with  
missing residential information

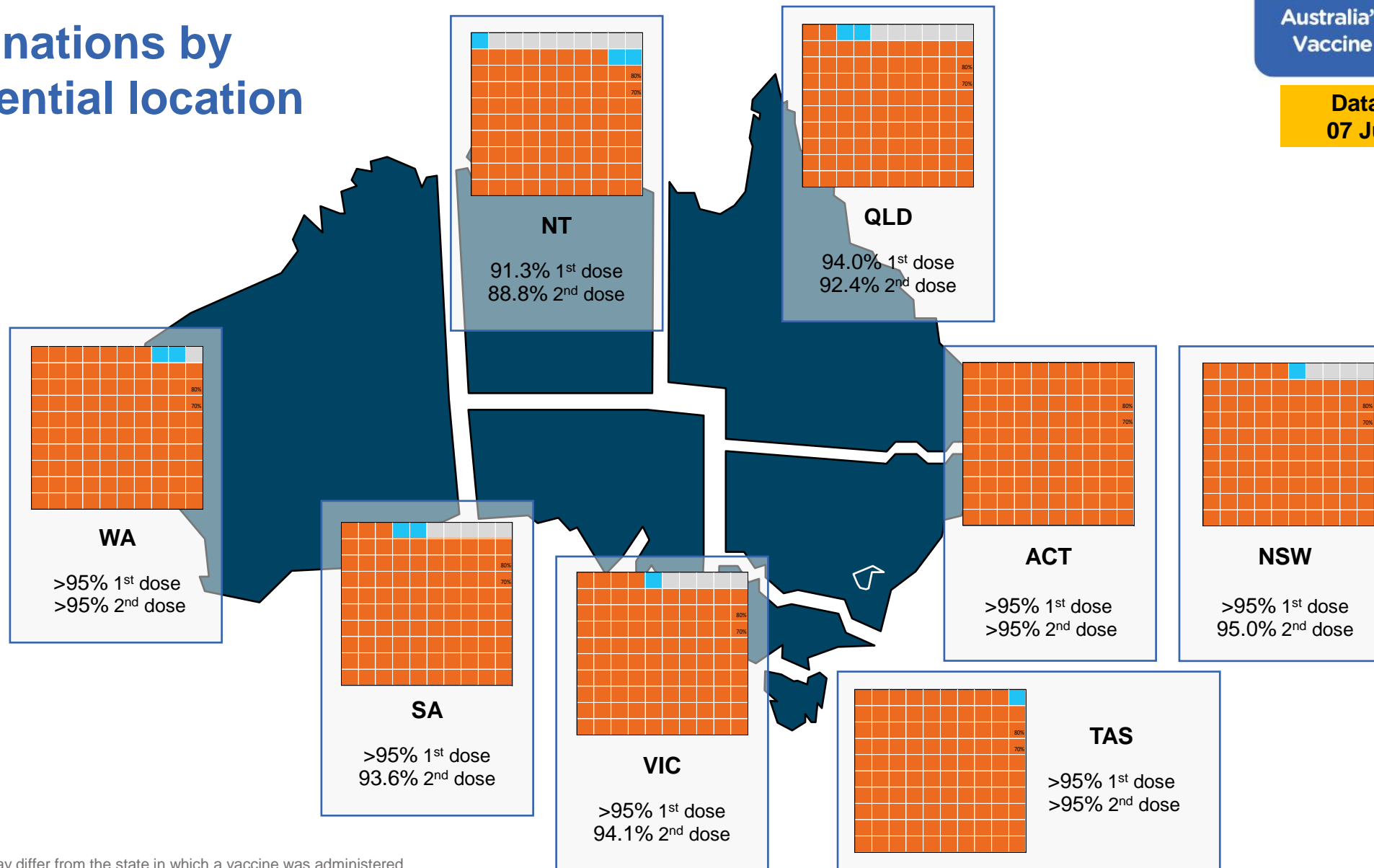
\*People become eligible for a winter booster four months after their third dose.

Source: Australian Immunisation Register

# Vaccinations by residential location

Australia's COVID-19  
Vaccine Roadmap

Data as at:  
07 Jun 2022



\*Residential state may differ from the state in which a vaccine was administered

# Commonwealth and Jurisdiction vaccine doses administered

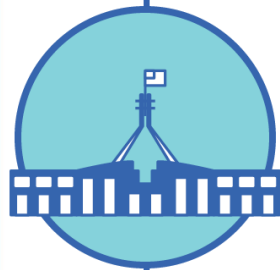
Data as at:  
07 Jun 2022



**59,532,043** total vaccine  
doses administered nationally as at 07 June  
**+ 56,172** recorded in the last 24 hours



**21,227,942**  
doses administered by state  
and territory facilities  
**+ 4,437**  
recorded in the last 24 hours



**38,304,101**  
doses administered by  
commonwealth facilities  
**+ 51,735**  
recorded in the last 24 hours

**36,998,499** total vaccine doses  
administered in primary care settings  
**1,305,602** total vaccine doses  
administered in aged care and disability  
settings

NSW	Jurisdictions	Commonwealth
Cumulative	5,131,118	13,332,324
Daily increase	331	16,412

VIC	Jurisdictions	Commonwealth
Cumulative	6,113,996	9,517,019
Daily increase	1,507	12,576

QLD	Jurisdictions	Commonwealth
Cumulative	3,855,481	7,402,111
Daily increase	446	10,569

WA	Jurisdictions	Commonwealth
Cumulative	2,522,196	4,027,693
Daily increase	727	5,201

TAS	Jurisdictions	Commonwealth
Cumulative	626,134	722,315
Daily increase	178	1,409

SA	Jurisdictions	Commonwealth
Cumulative	1,833,597	2,298,703
Daily increase	658	4,284

ACT	Jurisdictions	Commonwealth
Cumulative	799,338	759,350
Daily increase	493	900

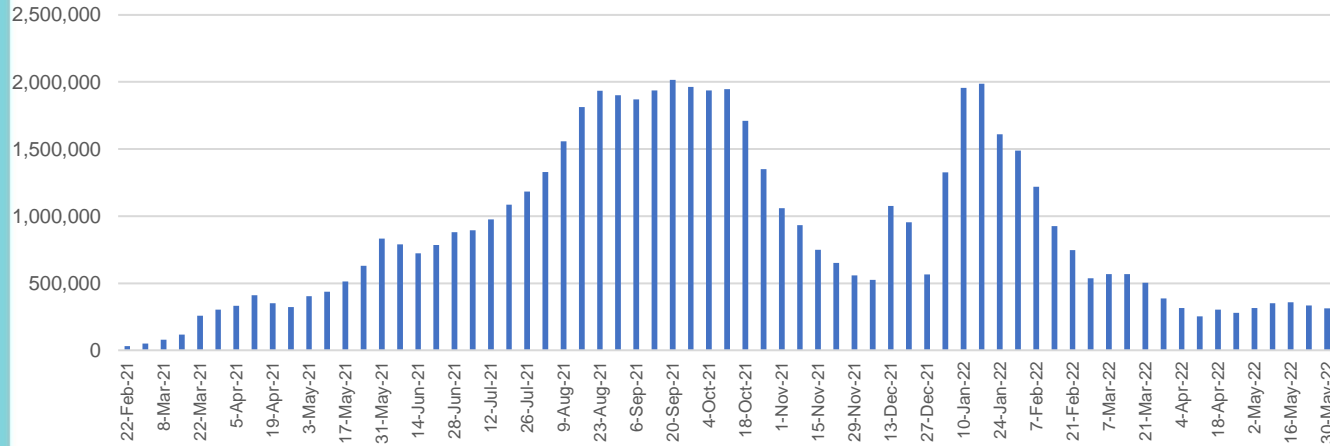
NT	Jurisdictions	Commonwealth
Cumulative	346,082	244,586
Daily increase	97	384

# Vaccine milestone charts

Data as at:  
07 Jun 2022

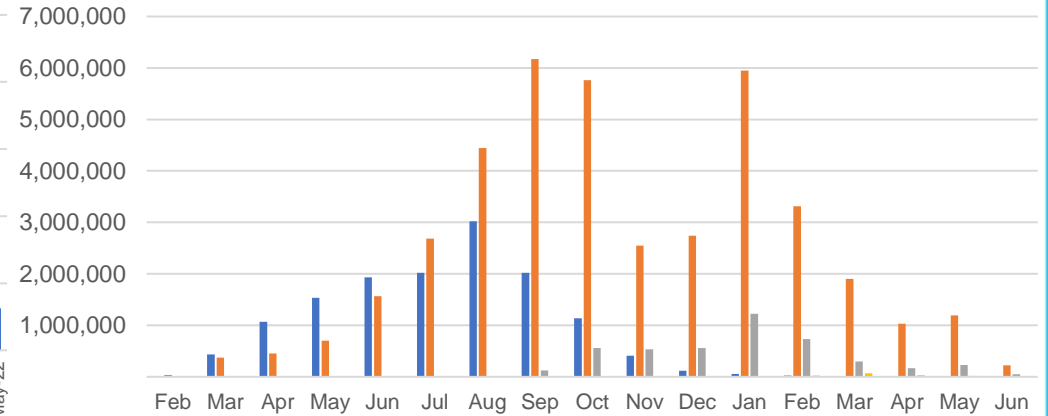
Australia's COVID-19  
Vaccine Roadmap

## Doses Administered by Week

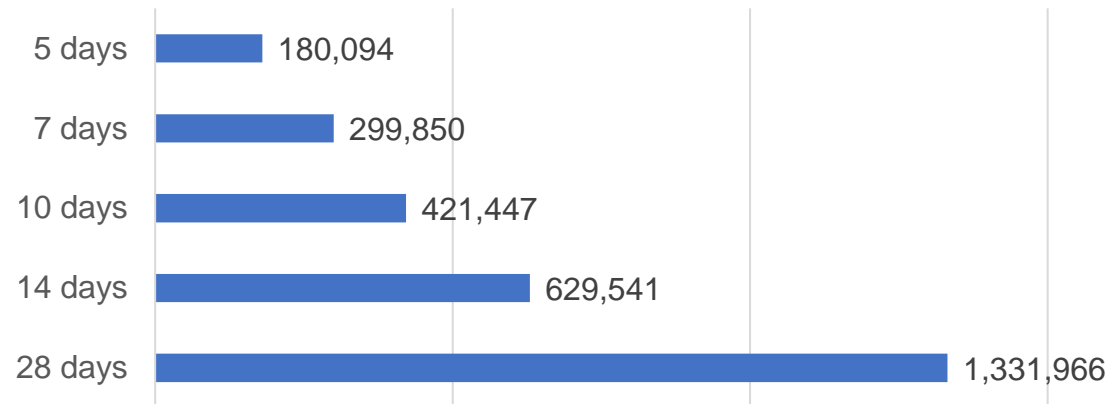


## Doses by administration month and vaccine type

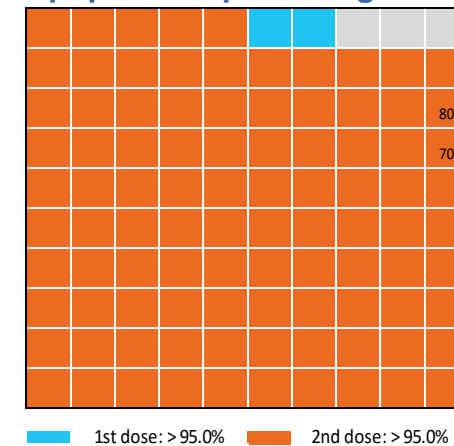
AZ - Vaxzevria Pfizer Moderna Novavax



## Doses Reported



## Eligible population percentage coverage



\*Each square represents 1% of the national population.  
Squares are filled as milestones are achieved.

\*Sourced from the Australian Immunisation Register.

# Doses by age and sex

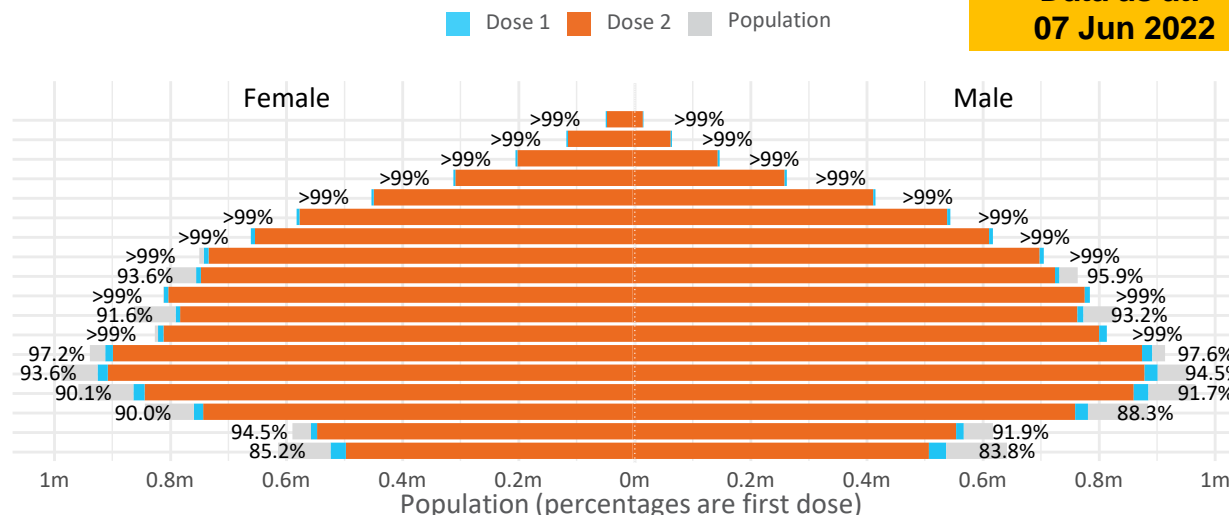
First and second doses by age and sex

Australia's COVID-19  
Vaccine Roadmap

Data as at:  
07 Jun 2022

Age	Dose 1	Dose 2
95+	64,447 (>99%)	61,033 (>99%)
90-94	180,553 (>99%)	175,024 (>99%)
85-89	348,888 (>99%)	342,055 (>99%)
80-84	569,511 (>99%)	562,324 (>99%)
75-79	861,320 (>99%)	852,940 (>99%)
70-74	1,117,624 (>99%)	1,106,393 (>99%)
65-69	1,268,562 (>99%)	1,254,003 (>99%)
60-64	1,435,910 (>99%)	1,419,616 (98.8%)
55-59	1,475,749 (94.9%)	1,459,087 (93.8%)
50-54	1,582,382 (>99%)	1,565,407 (>99%)
45-49	1,551,217 (92.5%)	1,532,798 (91.4%)
40-44	1,622,736 (>99%)	1,598,732 (98.7%)
35-39	1,791,876 (97.6%)	1,759,753 (95.9%)
30-34	1,817,932 (94.5%)	1,776,167 (92.3%)
25-29	1,743,497 (91.4%)	1,695,946 (89.0%)
20-24	1,532,583 (89.5%)	1,492,768 (87.2%)
16-19	1,115,157 (93.3%)	1,091,233 (91.3%)
12-15	1,051,213 (84.5%)	995,495 (80.0%)

	16+	50+	12-15	5-11
Dose 1	97.38% (20,079,944 doses / 20,619,959 people)	>99% (8,904,946 doses / 8,749,703 people)	84.50% (1,051,213 doses / 1,243,990 people)	52.57% (1,196,798 doses / 2,276,638 people)
Dose 2	95.76% (19,745,279 doses / 20,619,959 people)	>99% (8,797,882 doses / 8,749,703 people)	80.02% (995,495 doses / 1,243,990 people)	39.01% (888,030 doses / 2,276,638 people)



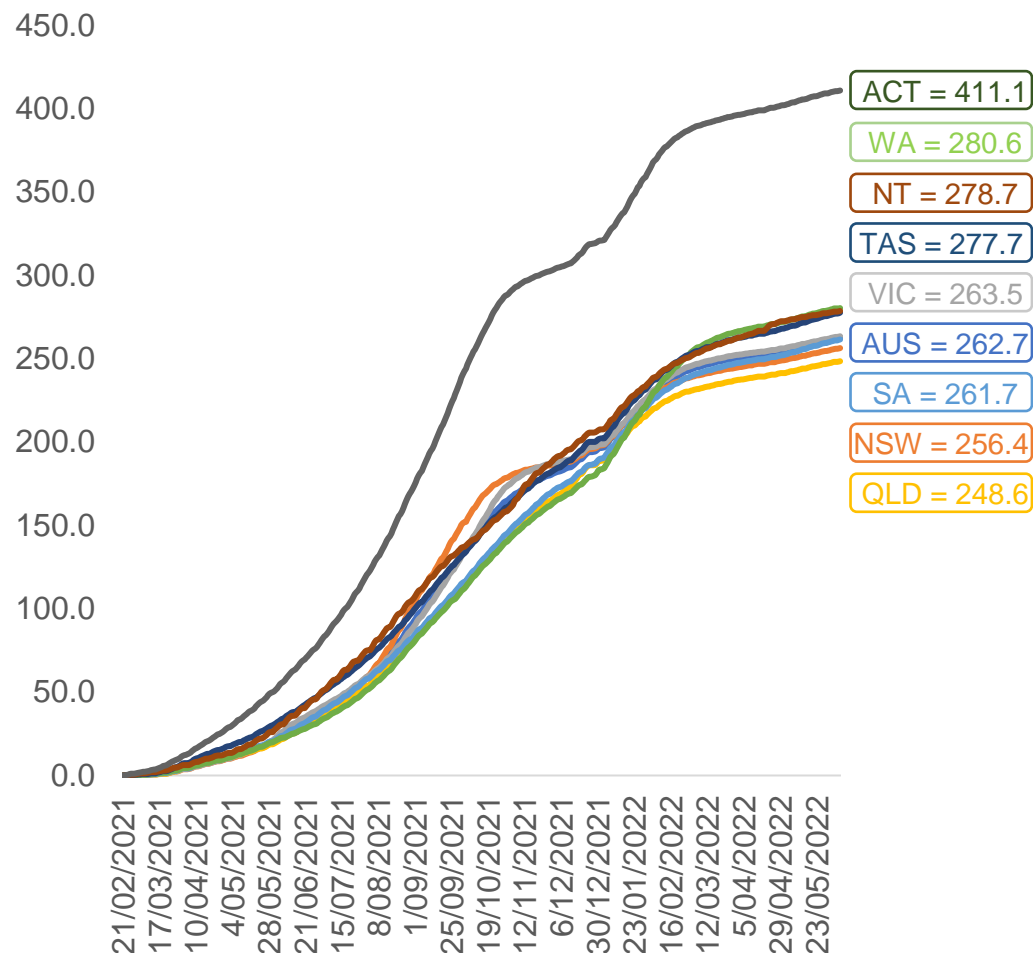
	AUS	ACT	NSW	NT	QLD	SA	TAS	VIC	WA
16 and over - dose 1	20,079,944	352,932	6,333,547	173,954	3,865,909	1,376,699	445,426	5,166,718	2,097,400
16 and over - dose 2	19,745,279	347,245	6,236,242	169,279	3,802,166	1,347,524	436,418	5,089,152	2,066,237
16 and over - population	20,619,959*	344,037	6,565,651	190,571	4,112,707	1,440,400	440,172	5,407,574	2,114,978
16 and over % with dose 1	97.38%	>99%	96.46%	91.28%	94.00%	95.58%	>99%	95.55%	>99%
16 and over % with dose 2	95.76%	>99%	94.98%	88.83%	92.45%	93.55%	>99%	94.11%	97.70%
5 to 11 - dose 1	1,196,798	31,889	357,297	13,202	207,453	83,907	28,560	325,694	141,002
5 to 11 - dose 2	888,030	27,136	270,685	8,634	148,219	62,331	22,965	242,745	100,693
5 to 11 - population	2,276,638	39,789	716,460	24,750	478,731	148,816	45,033	578,499	244,154
5 to 11 % with dose 1	52.57%	80.15%	49.87%	53.34%	43.33%	56.38%	63.42%	56.30%	57.75%
5 to 11 % with dose 2	39.01%	68.20%	37.78%	34.88%	30.96%	41.88%	51.00%	41.96%	41.24%
12 to 15 - dose 1	1,051,213	20,109	323,201	10,798	206,051	68,295	22,892	274,678	115,646
12 to 15 - dose 2	995,495	19,578	308,860	9,730	192,694	64,546	21,774	262,869	107,136
12 to 15 - population	1,243,990	19,693	390,330	13,060	270,146	82,747	26,308	308,611	132,869
12 to 15 % with dose 1	84.50%	>99%	82.80%	82.68%	76.27%	82.53%	87.02%	89.00%	87.04%
12 to 15 % with dose 2	80.02%	>99%	79.13%	74.50%	71.33%	78.00%	82.77%	85.18%	80.63%

\*National population will not equal sum of listed jurisdictions due to a small number of people counted in national population residing in some 'other' territories. Sum of state doses will not add to national total as some records are unable to be geocoded to a State or Territory.  
Doses sourced from Australian Immunisation Register, population from ABS ERP June 2020



# Vaccinations by location

Cumulative total doses administered vs eligible state populations\*

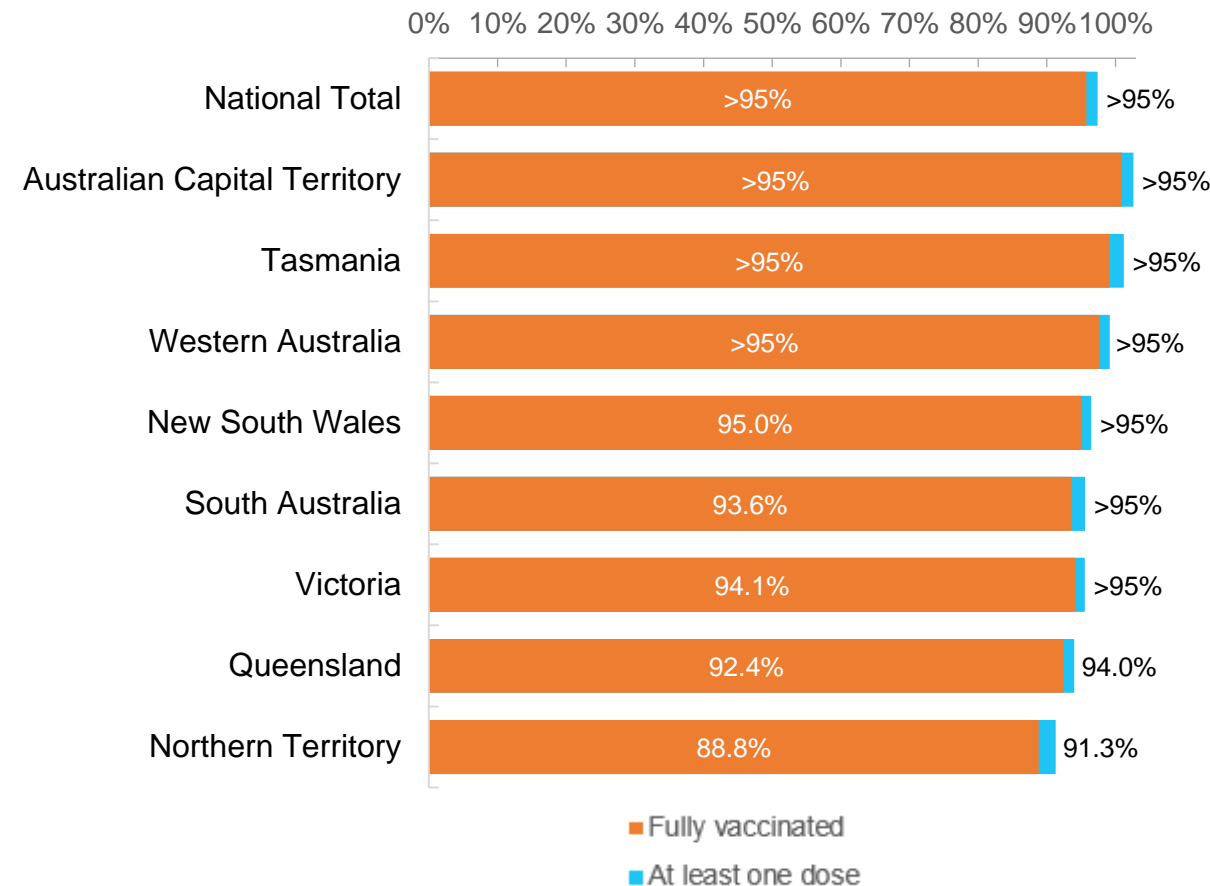


\*Not an indication of percentage vaccinated, numbers will exceed 100 due to multiple doses required per person of the population. All doses are included for those aged 12 and above, and are based on vaccination provider location.

Data as at:  
07 Jun 2022

Australia's COVID-19  
Vaccine Roadmap

First and Second Doses by residential location



# Aboriginal and Torres Strait Islander peoples

## Number of people vaccinated

Data as at:  
07 Jun 2022  
Updated weekly

Australia's COVID-19  
Vaccine Roadmap



**442,874**

people over the age of 16  
have had at least one dose

**85.0%**

of people over the age of 16  
have had at least one dose



**424,313**

people over the age of 16  
are fully vaccinated

**81.4%**

of people over the age of 16 are  
fully vaccinated



People aged 12 – 15 years

**48,180**

**68.1%**  
At least one dose

**42,347**

**59.9%**  
Fully vaccinated

### 178 Aboriginal community controlled health services (ACCHS)^

0#  
**ACT**

50  
**NSW**

27  
**NT**

44  
**QLD**

12  
**SA**

3  
**TAS**

21  
**VIC**

21  
**WA**

Medicare Address State <sup>##</sup>	Individuals Dose 1	Individuals Dose 1 %	Individuals Dose 2	Individuals Dose 2 %
Australian Capital Territory	4,796	91.7%	4,675	89.4%
New South Wales	136,052	87.3%	132,990	85.4%
Northern Territory	41,483	89.7%	39,499	85.4%
Queensland	116,374	81.8%	110,974	78.0%
South Australia	20,068	80.5%	18,671	74.9%
Tasmania	13,947	88.8%	13,538	86.2%
Victoria	35,648	90.4%	34,880	88.5%
Western Australia	53,657	86.7%	49,896	80.6%
Unknown/Other Territories	20,849	70.0%	19,190	64.4%
<b>Totals</b>	<b>442,874</b>	<b>85.0%</b>	<b>424,313</b>	<b>81.4%</b>

Source: Australian Immunisation Register

\*Identifying as Aboriginal and Torres Strait Islander is optional and the estimated population may be under reported.

\*\*Includes all Aboriginal and Torres Strait Islander peoples who have received a vaccination, not limited to those administered in an ACCHS setting

#ACCHS in the ACT are currently operating as a Commonwealth Vaccine Clinics so not included to avoid double counting

##The above table includes all identified Aboriginal and Torres Strait Islander people who are aged 16 and above by their state of residence.

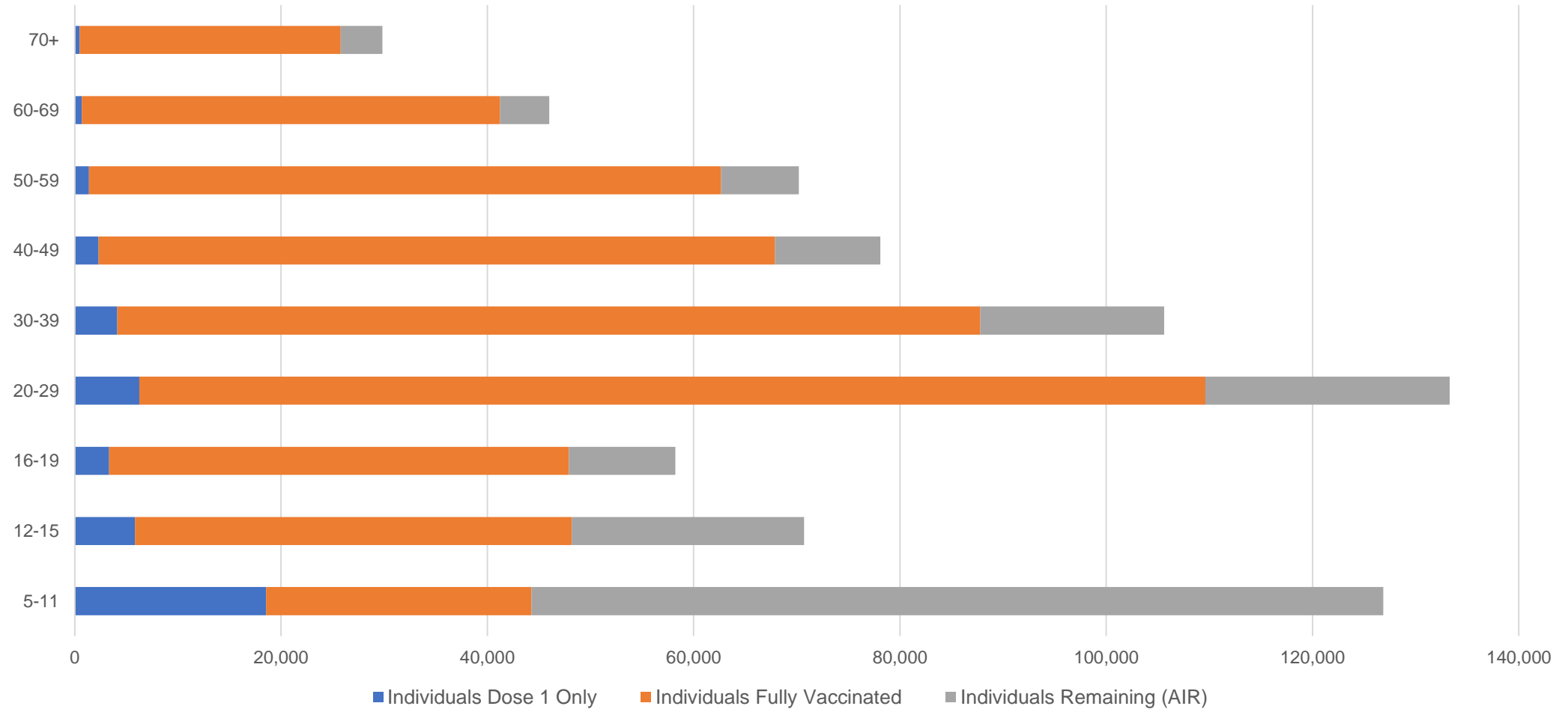
^ACCHS reported as at 1 June 2022

# Aboriginal and Torres Strait Islander peoples

## Number of people vaccinated by age

Data as at:  
07 Jun 2022  
Updated weekly

Australia's COVID-19  
Vaccine Roadmap



Source: Australian Immunisation Register

# Commonwealth primary care

Data as at:  
07 Jun 2022

Australia's COVID-19  
Vaccine Roadmap



## Primary care vaccine administration sites

<b>5,715</b>	<b>128</b>	<b>178</b>	<b>3,607</b>
GPs	CVCs	ACCHS	Pharmacies



**36,998,499** total vaccine doses administered  
primary care settings as at 07 June  
**+ 50,330** recorded in the last 24 hours

## Primary care vaccinations by provider type

	Doses administered	Daily increase	7 day increase
General Practice* includes other Commonwealth	29,630,883	36,483	187,371
Pharmacy	7,367,616	13,847	76,534

**NSW**  
**12,764,175**  
(+16,017 daily increase)

**VIC**  
**9,186,938**  
(+12,156 daily increase)

**QLD**  
**7,118,053**  
(+10,429 daily increase)

**WA**  
**3,889,410**  
(+5,038 daily increase)

**TAS**  
**701,184**  
(+1,528 daily increase)

**SA**  
**2,217,354**  
(+4,136 daily increase)

**ACT**  
**584,657**  
(+798 daily increase)

**NT**  
**219,575**  
(+310 daily increase)

**317,153**

doses administered to persons  
residing in other territories or with  
missing residential information

\*General practice includes Commonwealth Vaccination Clinics, Aboriginal Community Health Centres, Royal Flying Doctor Service and other Commonwealth vaccination facilities

Source: Australian Immunisation Register

Data as at:  
07 Jun 2022

# Commonwealth aged care and disability doses administered



**1,305,602** (+ 1,405 last 24 hours)

Total vaccine doses administered in aged care and disability facilities as at 07 June

Number of doses administered as part of the Commonwealth aged and disability care rollout

**NSW**  
**568,714**  
(+493 daily increase)

**VIC**  
**245,821**  
(+266 daily increase)

**QLD**  
**207,648**  
(+282 daily increase)

**WA**  
**110,285**  
(+106 daily increase)

**TAS**  
**23,577**  
(<10 daily increase)

**SA**  
**85,507**  
(+171 daily increase)

**ACT**  
**17,772**  
(+43 daily increase)

**NT**  
**7,676**  
(<10 daily increase)

**38,602**

doses administered to persons  
residing in other territories or with  
missing residential information

\*Sourced from the Australian Immunisation Register. Includes all persons vaccinated at participating residential aged care, disability and related industry settings.

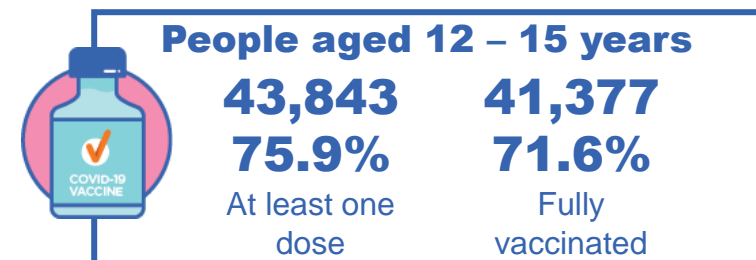
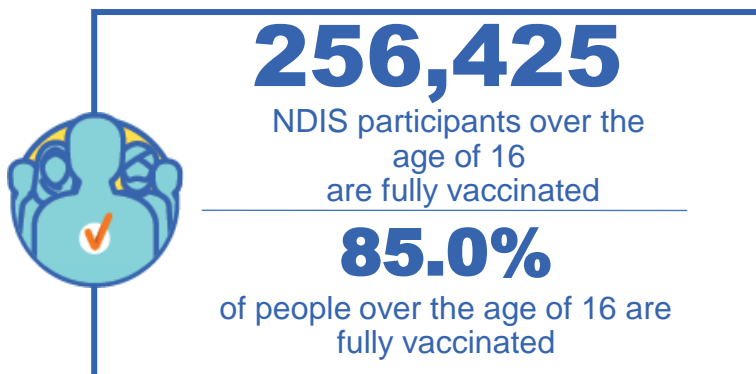
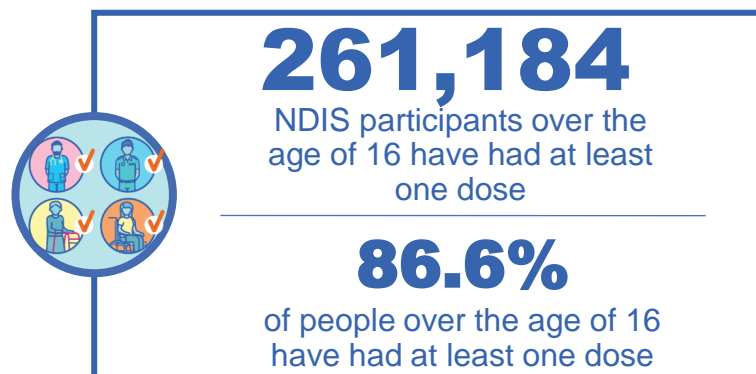
\*\*State level breakdown indicates the residential location and may not align to the state in which the vaccination occurred.

Source: Australian Immunisation Register

# National Disability Insurance Scheme (NDIS) reported vaccinations

Data as at:  
02 June 2022  
Updated weekly

Australia's COVID-19  
Vaccine Roadmap



## NDIS participant vaccinations

	People aged 16+ with at least one dose	People aged 16+ fully vaccinated	% People aged 16+ with at least one dose	% People aged 16+ fully vaccinated
ACT	4,929	4,861	88.8%	87.6%
NSW	80,045	78,751	87.2%	85.8%
NT	2,265	2,198	77.6%	75.3%
QLD	51,652	50,676	84.7%	83.1%
SA	21,354	20,846	84.3%	82.3%
TAS	6,539	6,388	87.0%	85.0%
VIC	69,437	68,262	87.8%	86.3%
WA	24,963	24,443	87.9%	86.1%
National	261,184	256,425	86.6%	85.0%

Source: Linkage between National Disability Insurance Agency data and the Australian Immunisation Register. Total NDIS participant numbers as at 30 May. Australian Immunisation Register data as at 01 June. Includes all participants regardless of residence type.

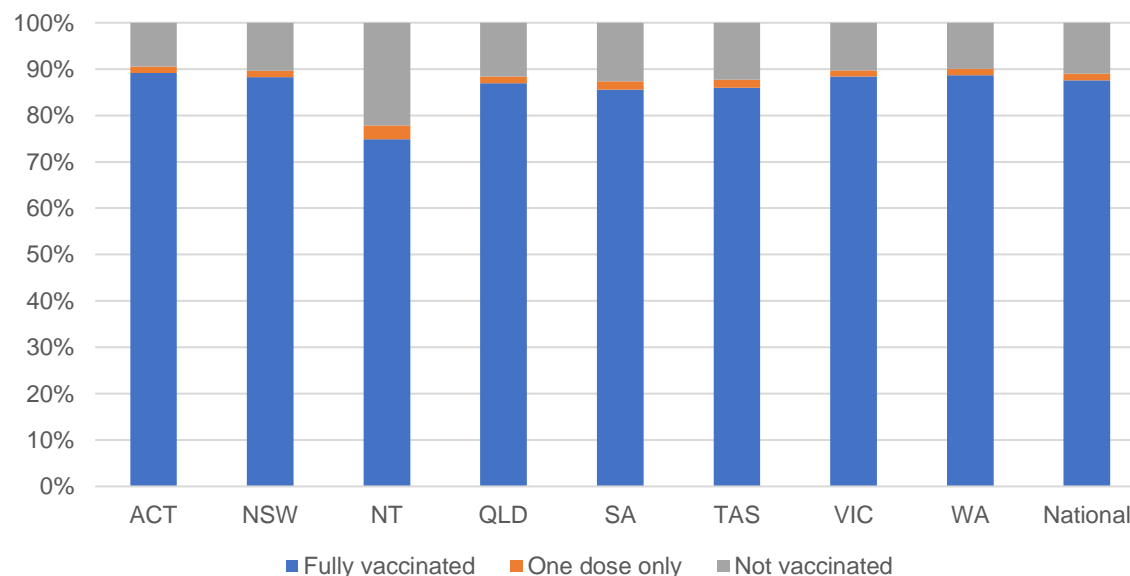
# National Disability Insurance Scheme (NDIS) reported vaccinations

Data as at:  
02 June 2022  
Updated weekly

Australia's COVID-19  
Vaccine Roadmap

NATIONAL	Total people with at least one dose	People fully vaccinated	Total number of individuals in cohort	% People with at least one dose	% People fully vaccinated
NDIS participants living in disability accommodation	20,872	20,537	23,469	88.9%	87.5%

## NDIS participants in disability and aged care accommodation



Source: Linkage between National Disability Insurance Agency data and the Australian Immunisation Register. Includes participants residing in disability accommodation only.

Source: Total NDIS participant numbers as at 30 May. Participant data as at 31 May. Australian Immunisation Register data as at 01 June. Worker data as at 02 June.

## NDIS workforce vaccinations

	NDIS workers with at least one dose	NDIS workers fully vaccinated	% NDIS workers with at least one dose	% NDIS workers fully vaccinated
NSW	126,380	121,370	98.2%	94.4%
VIC	117,785	114,472	98.4%	95.6%
QLD	71,137	70,199	97.7%	96.4%
WA	34,364	32,891	98.7%	94.5%
SA	35,871	33,669	98.6%	92.5%
TAS	10,860	10,618	99.5%	97.3%
ACT	12,303	12,281	99.8%	99.6%
NT	3,929	3,781	99.6%	95.9%
<b>TOTAL</b>	<b>412,629</b>	<b>399,281</b>	<b>98.4%</b>	<b>95.2%</b>

Source: the NDIS Commission has established a requirement for registered NDIS providers who provide intensive disability support services to report on the vaccination status of workers they employ, or otherwise engage, to deliver NDIS-funded supports and services, and who are required to be vaccinated in accordance with in-force state and territory public health orders. The statistics reflect data reported to the NDIS Commission by registered NDIS providers and should be considered indicative and subject to change

Note: Some registered NDIS providers are yet to report on the vaccination status of their workforce. The NDIS Commission is working with those providers around reporting requirements.

Remaining workers not included include those exempt from vaccination requirements, workers whose vaccination status is not yet verified by the provider (such as workers on leave) and provider reporting anomalies.



# Residential aged care vaccination rollout

Residential aged care facilities status

**176,176**

People fully vaccinated

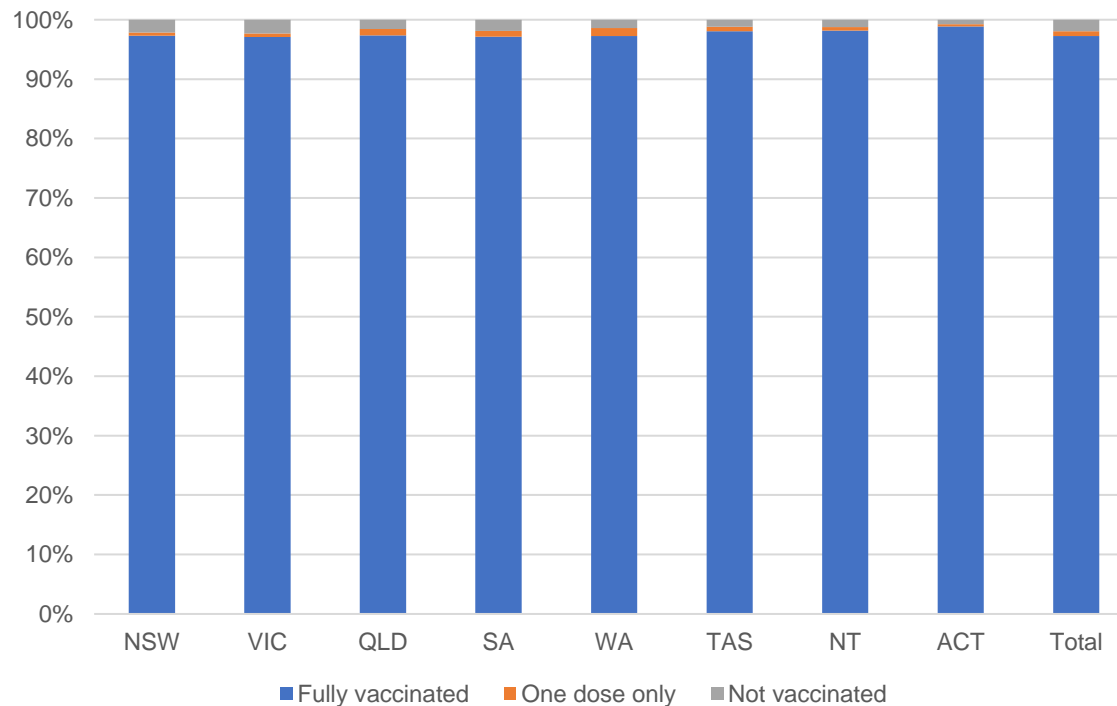
**177,586**

People with at least one dose

Australia's COVID-19 Vaccine Roadmap

Data as at:  
02 June 2022  
Updated weekly

## Aged care resident vaccinations



## Aged care worker vaccinations

Jurisdictions	Total workers with at least one dose	Workers fully vaccinated	% Workers with at least one dose	% Workers fully vaccinated
NSW	76,590	76,582	99.8%	99.8%
VIC	70,104	70,102	99.0%	99.0%
QLD	48,107	48,102	99.5%	99.5%
SA	27,301	27,289	99.5%	99.5%
WA	24,534	24,529	100.0%	100.0%
TAS	7,598	7,596	100.0%	100.0%
NT	902	902	100.0%	100.0%
ACT	2,946	2,946	100.0%	100.0%
Total	258,082	258,048	99.5%	99.5%

Source: My Aged Care Portal vaccination progress

\*Status updates are provided by facilities at least once per week. Reporting is updated Monday to Friday to encompass different facility updates being made on different days.

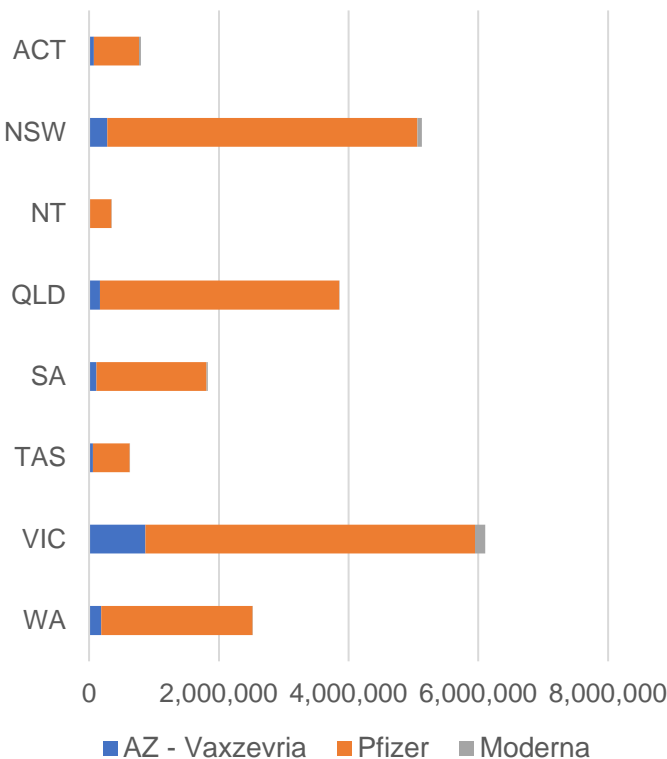
Data is sourced directly from Aged Care Service Providers and is not drawn or closely aligned with data from AIR due to inconsistencies and potential lags in uploading of records.



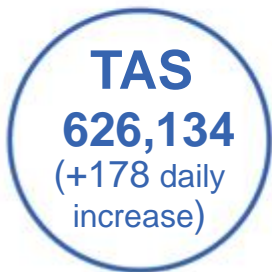
Data as at:  
07 Jun 2022

# Jurisdiction administered

Total vaccine doses administered in State and Territory clinics as at 07 June



**21,227,942** total vaccine doses administered  
in State and Territory clinics as at 07 June  
+ **4,437** recorded in the last 24 hours  
+ **30,026** recorded in the last 7 days



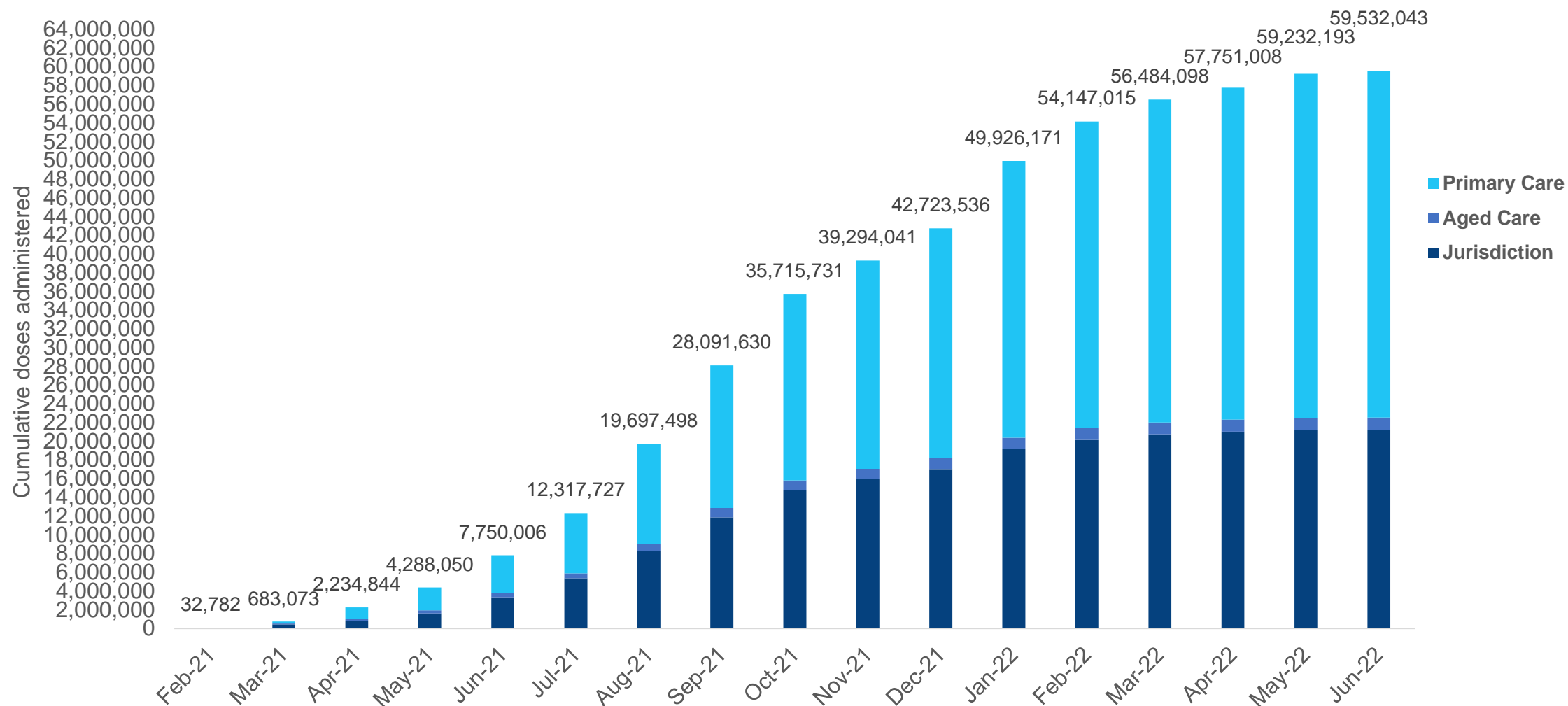
\*Sourced from the Australian Immunisation Register. Numbers are calculated as difference in daily cumulative reported numbers to allow for historical corrections.

Source: Australian Immunisation Register

# Cumulative doses administered by channel

Data as at:  
07 Jun 2022

Australia's COVID-19  
Vaccine Roadmap

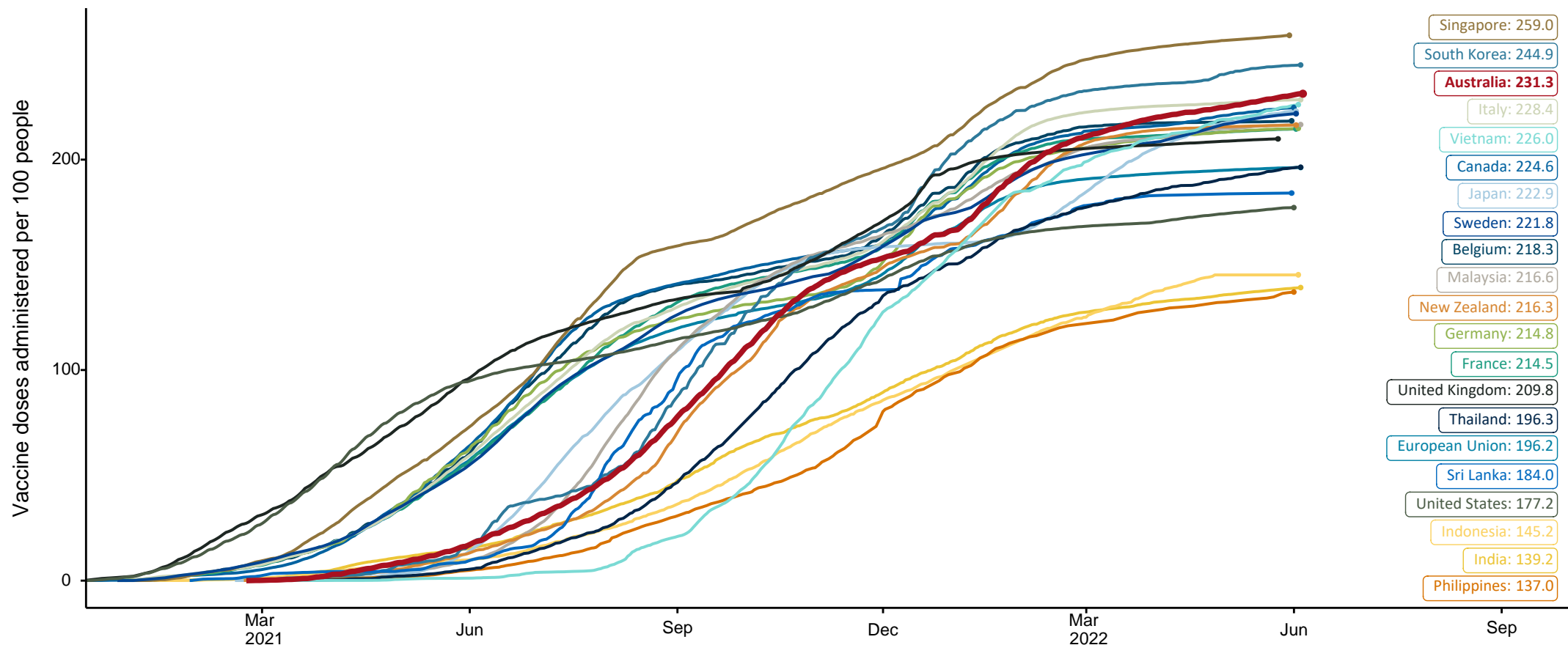


Source: Australian Immunisation Register

# COVID-19 vaccine doses per 100, Australia and select countries

Data as at:  
05 June 2022  
Updated weekly

Australia's COVID-19  
Vaccine Roadmap



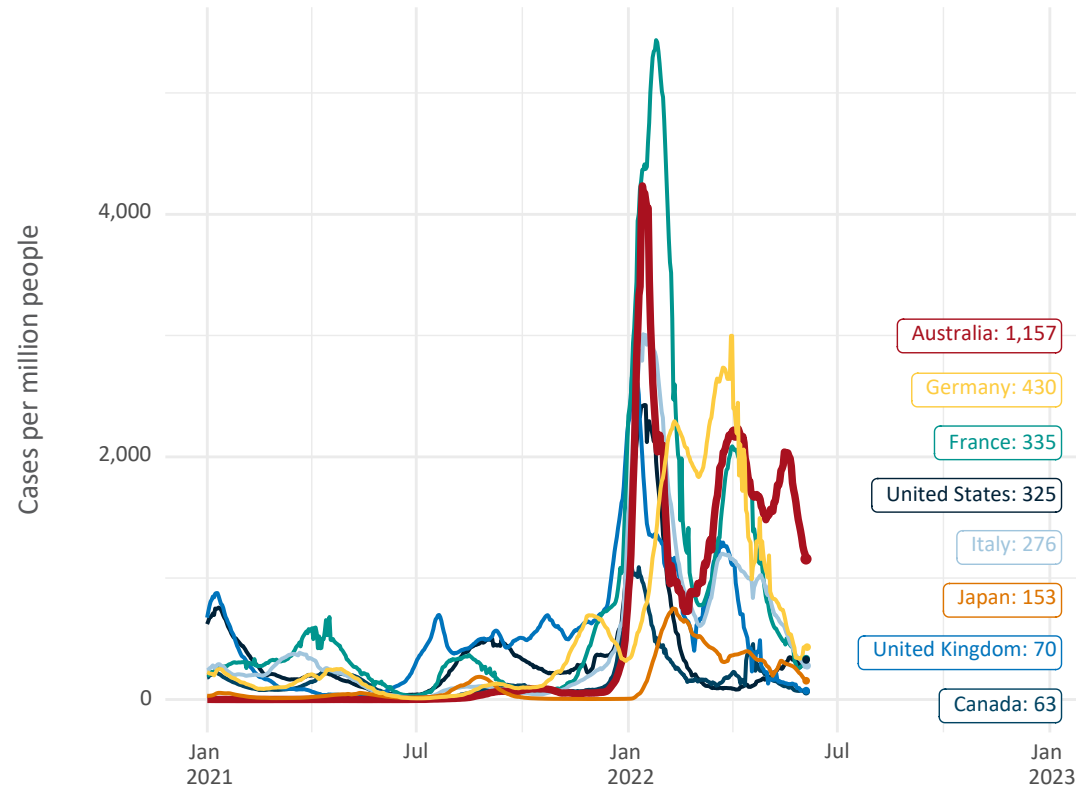
Note: From 11 January 2022, data for Australia includes all doses administered to people 5 and over. Prior to 11 January, data was for 12 and over.  
Source: Department of Health (Australia), Our World in Data (international)  
Latest data: 05 June

# International data – COVID-19

Data as at:  
05 June 2022  
Updated weekly

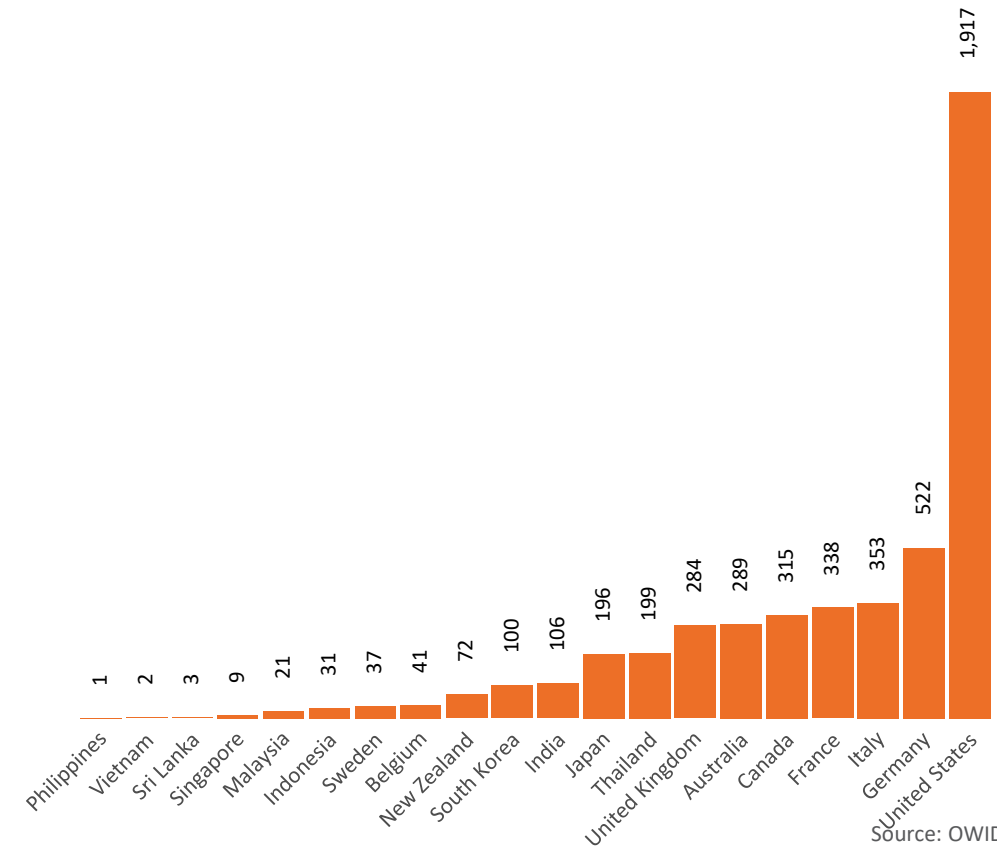
Australia's COVID-19  
Vaccine Roadmap

New daily cases per million since 2021, Australia and G7 countries  
Smoothed - 7 day average



Source: OWID  
Data downloaded: 06 Jun 2022 11:20  
Latest data: 05 Jun 2022

COVID-19 deaths in past 7 days - Australia and select countries



Source: OWID  
Data downloaded: 06 Jun 2022 11:20  
Latest data: 05 Jun 2022