



Australian Government
Operation COVID Shield

COVID-19 Vaccine Roll-out

07 June 2022

Data as at:
06 Jun 2022

Total vaccine doses



59,475,871 total vaccine doses administered nationally as at 06 June

+44,468 recorded in the last 24 hours



20,078,184

people have had at least one dose

>95%

of people over the age of 16 have had at least one dose



19,743,469

people are fully vaccinated

>95%

of people over the age of 16 are fully vaccinated



13,749,895

people over the age of 16 who have received three or more doses

NSW
18,446,699
(+16,267 daily increase)

VIC
15,616,932
(+11,968 daily increase)

QLD
11,246,577
(+8,707 daily increase)

WA
6,543,961
(+478 daily increase)

TAS
1,346,862
(+1,235 daily increase)

SA
4,127,358
(+4,243 daily increase)

ACT
1,557,295
(+1,232 daily increase)

NT
590,187
(+338 daily increase)

*Administration state breakdown indicates state in which a vaccine was administered

**Overall dose count includes instances of more than three doses per person in a small number of cases.

Source: Australian Immunisation Register

Booster Vaccinations

Data as at:
06 Jun 2022



221,770

Indigenous people who have received three or more doses

53.7%

of eligible population (413,202)



165,186

Aged Care Residents who have received three or more doses##

93.7%

of eligible population (176,201)



189,929

NDIS participants

who have received three or more doses#

74.7%

of eligible population (254,000)

21,752

NDIS residents

who have received three or more doses#

89.2%

of eligible population (24,000)



13,749,895

total people who have received three or more doses

+7,545 daily increase

70.1% of eligible population (19,603,569)

	Number of People	Daily Increase	% of Eligible
NSW	4,194,034	2,683	67.5%
VIC	3,669,747	1,986	72.4%
QLD	2,380,268	1,438	63.2%
WA	1,690,620	26	83.2%
SA	980,132	721	73.6%
TAS	314,324	189	72.6%
ACT	271,977	92	78.5%
NT	130,232	99	77.7%

*People may belong to multiple groups and could be represented in the above breakdowns multiple times.

NDIS participants data as at 02 June 2022.

Aged Care Residents data as at 06 June 2022.

Source: Australian Immunisation Register

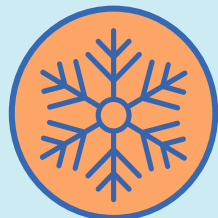
118,561

doses administered to persons residing in other territories or with missing residential information

Winter / Fourth Doses

Data as at:
06 Jun 2022

Australia's COVID-19
Vaccine Roadmap



1,740,795 total people (16+) who have received four or more doses

+33,250 daily increase



1,548,686

People aged 65+ who have received four or more doses

51.3%

of eligible population (3,017,629)

	Number of People 16+	Daily Increase
ACT	36,145	525
NSW	564,476	12,331
NT	7,563	105
QLD	330,425	6,545
SA	139,914	3,135
TAS	48,795	990
VIC	438,104	9,089
WA	166,973	321

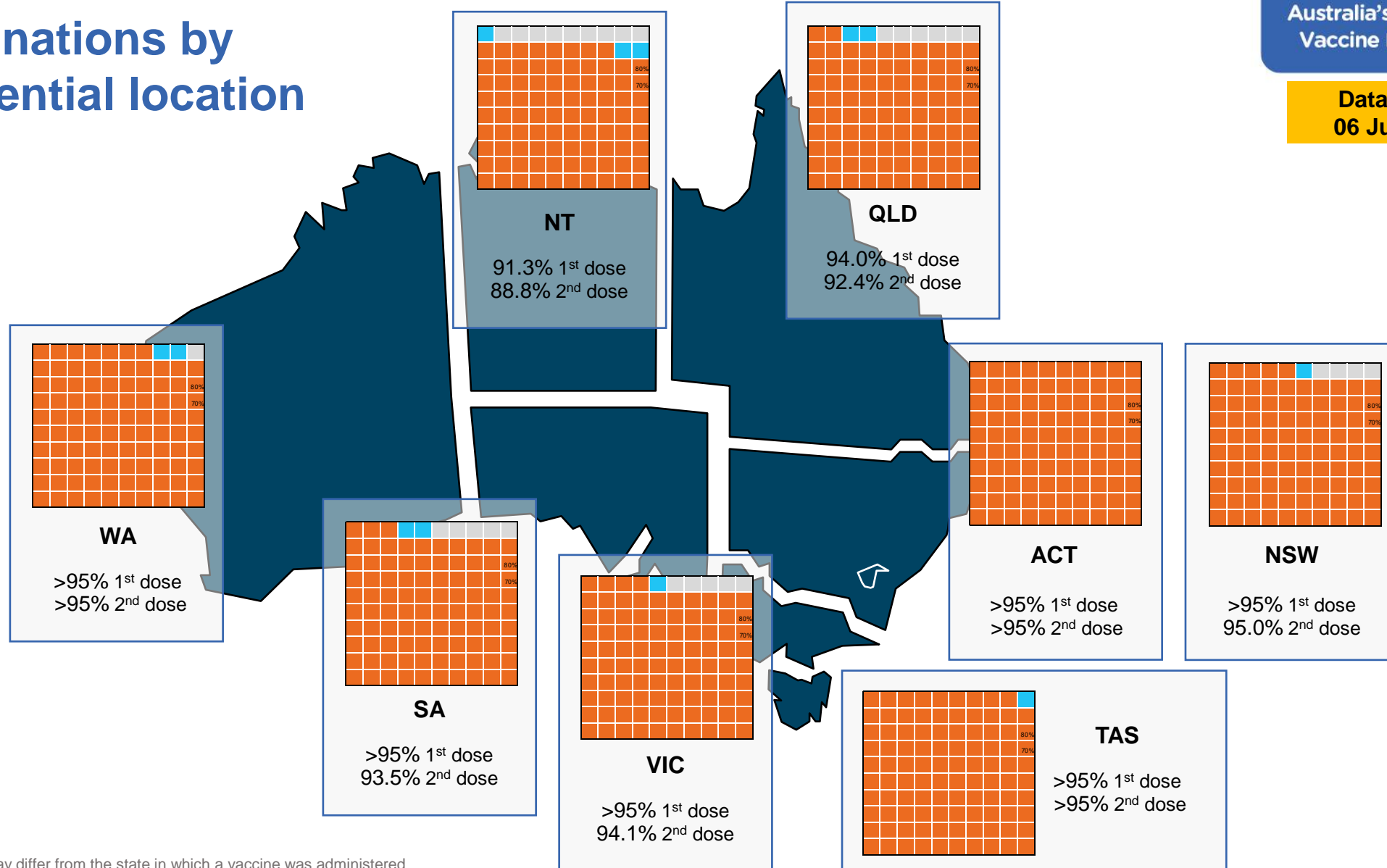
8,400 doses administered to persons residing in other territories or with missing residential information

*People become eligible for a winter booster four months after their third dose.

Source: Australian Immunisation Register

Data as at:
06 Jun 2022

Vaccinations by residential location



*Residential state may differ from the state in which a vaccine was administered

Commonwealth and Jurisdiction vaccine doses administered

Data as at:
06 Jun 2022



59,475,871 total vaccine doses administered nationally as at 06 June

+ 44,468 recorded in the last 24 hours

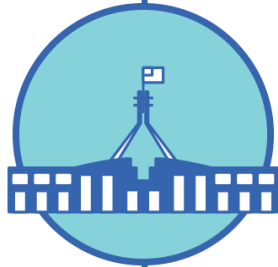


21,223,505

doses administered by state and territory facilities

+ 3,428

recorded in the last 24 hours



38,252,366

doses administered by commonwealth facilities

+ 41,040

recorded in the last 24 hours

36,948,169 total vaccine doses administered in primary care settings

1,304,197 total vaccine doses administered in aged care and disability settings

NSW	Jurisdictions	Commonwealth
Cumulative	5,130,787	13,315,912
Daily increase	389	15,878

VIC	Jurisdictions	Commonwealth
Cumulative	6,112,489	9,504,443
Daily increase	1,384	10,584

QLD	Jurisdictions	Commonwealth
Cumulative	3,855,035	7,391,542
Daily increase	363	8,344

WA	Jurisdictions	Commonwealth
Cumulative	2,521,469	4,022,492
Daily increase	11	467

TAS	Jurisdictions	Commonwealth
Cumulative	625,956	720,906
Daily increase	56	1,179

SA	Jurisdictions	Commonwealth
Cumulative	1,832,939	2,294,419
Daily increase	561	3,682

ACT	Jurisdictions	Commonwealth
Cumulative	798,845	758,450
Daily increase	502	730

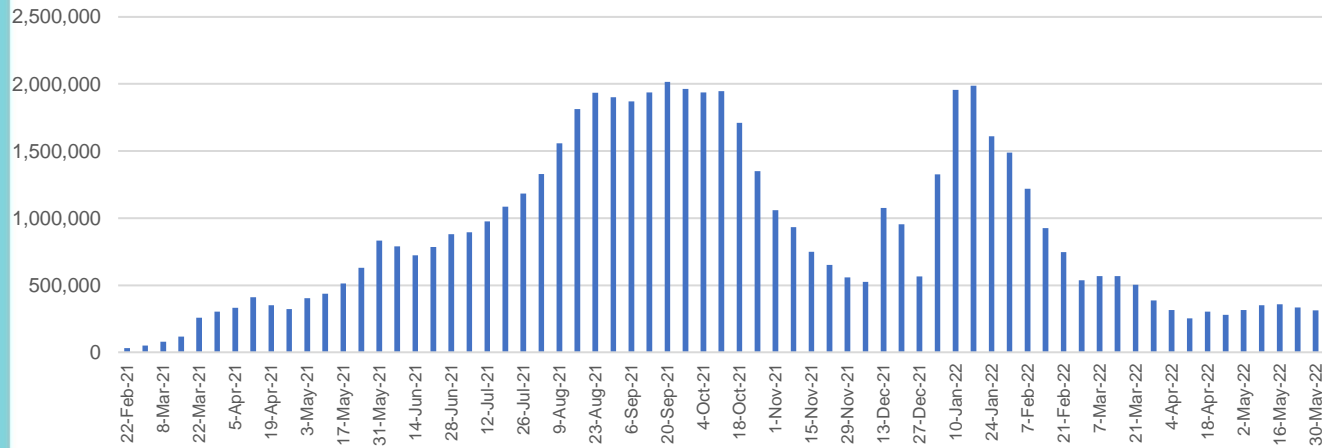
NT	Jurisdictions	Commonwealth
Cumulative	345,985	244,202
Daily increase	162	176

Vaccine milestone charts

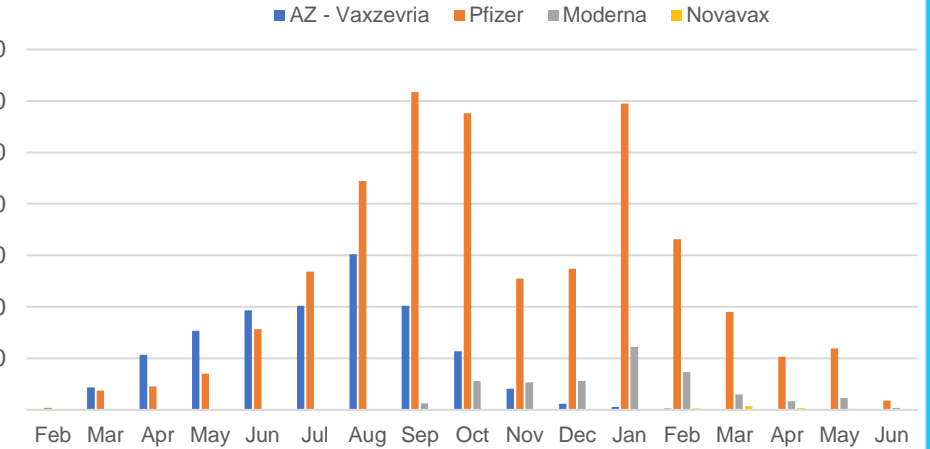
Data as at:
06 Jun 2022

Australia's COVID-19
Vaccine Roadmap

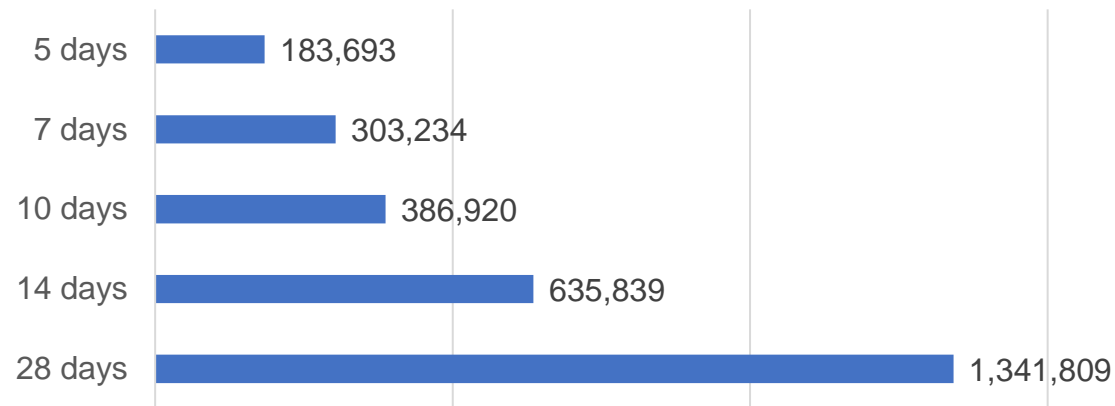
Doses Administered by Week



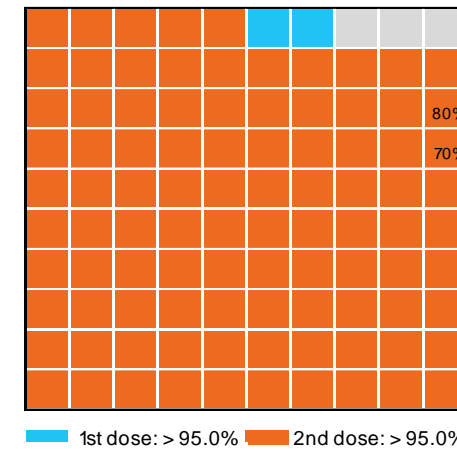
Doses by administration month and vaccine type



Doses Reported



Eligible population percentage coverage



*Each square represents 1% of the national population. Squares are filled as milestones are achieved.

*Sourced from the Australian Immunisation Register.

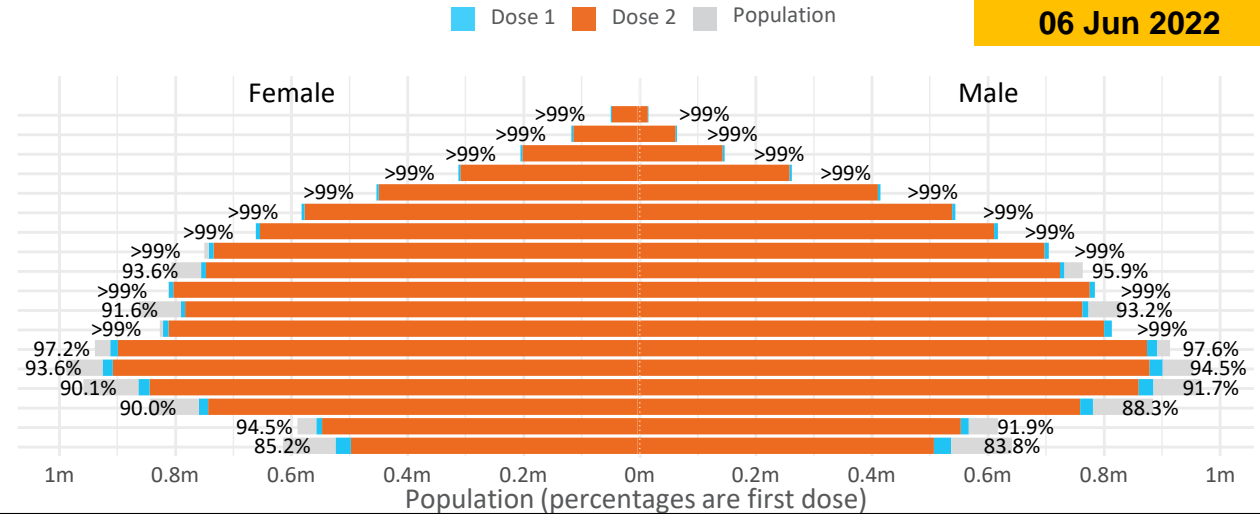
Doses by age and sex

First and second doses by age and sex

	16+	50+	12-15	5-11
Dose 1	97.37% (20,078,184 doses / 20,619,959 people)	>99% (8,903,774 doses / 8,749,703 people)	84.52% (1,051,432 doses / 1,243,990 people)	52.58% (1,197,125 doses / 2,276,638 people)
Dose 2	95.75% (19,743,469 doses / 20,619,959 people)	>99% (8,796,701 doses / 8,749,703 people)	80.05% (995,762 doses / 1,243,990 people)	38.98% (887,404 doses / 2,276,638 people)

Data as at:
06 Jun 2022

Age	Dose 1	Dose 2
95+	64,379 (>99%)	60,961 (>99%)
90-94	180,456 (>99%)	174,916 (>99%)
85-89	348,782 (>99%)	341,943 (>99%)
80-84	569,392 (>99%)	562,200 (>99%)
75-79	861,071 (>99%)	852,689 (>99%)
70-74	1,117,602 (>99%)	1,106,361 (>99%)
65-69	1,268,387 (>99%)	1,253,837 (>99%)
60-64	1,435,753 (>99%)	1,419,473 (98.8%)
55-59	1,475,676 (94.9%)	1,459,024 (93.8%)
50-54	1,582,276 (>99%)	1,565,297 (>99%)
45-49	1,551,179 (92.5%)	1,532,768 (91.4%)
40-44	1,622,606 (>99%)	1,598,587 (98.7%)
35-39	1,791,872 (97.6%)	1,759,759 (95.9%)
30-34	1,817,885 (94.5%)	1,776,095 (92.3%)
25-29	1,743,561 (91.5%)	1,696,010 (89.0%)
20-24	1,532,571 (89.5%)	1,492,747 (87.2%)
16-19	1,114,736 (93.2%)	1,090,802 (91.2%)
12-15	1,051,432 (84.5%)	995,762 (80.0%)



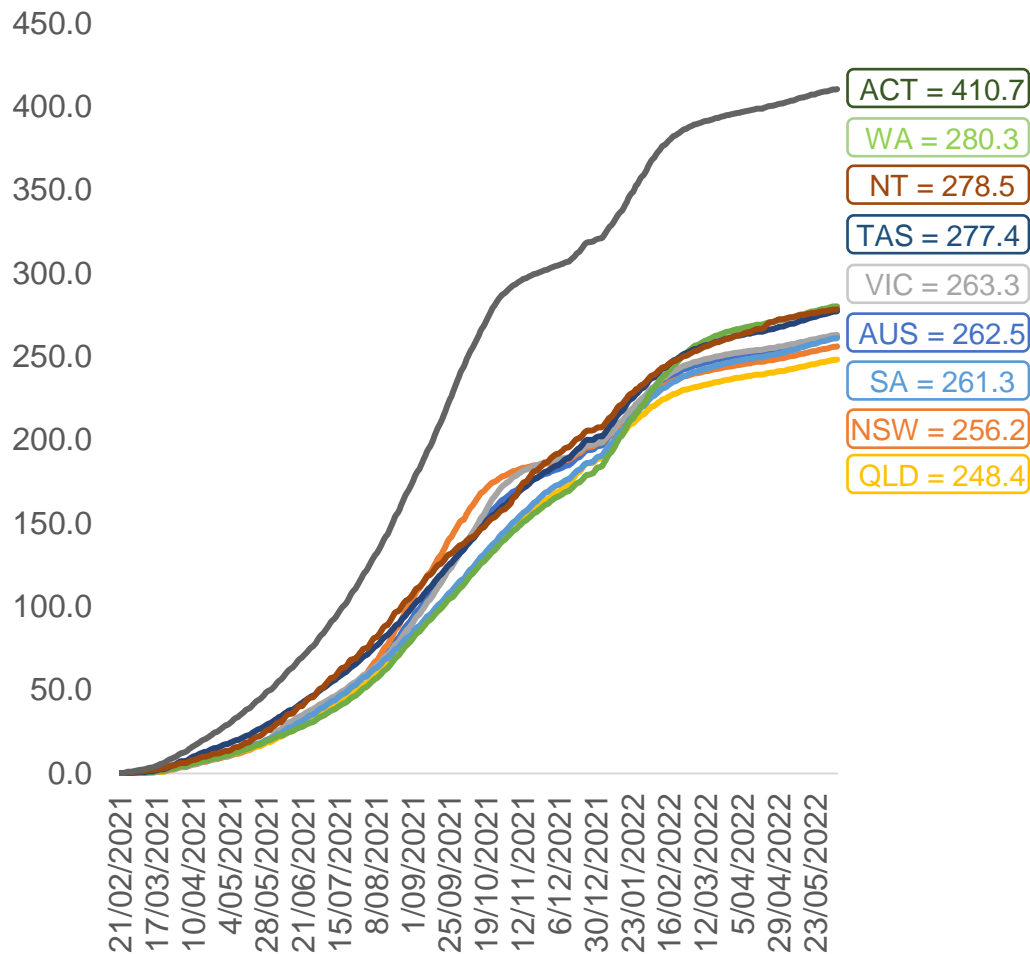
	AUS	ACT	NSW	NT	QLD	SA	TAS	VIC	WA
16 and over - dose 1	20,078,184	352,903	6,333,040	174,003	3,865,349	1,376,534	445,379	5,166,241	2,097,209
16 and over - dose 2	19,743,469	347,225	6,235,739	169,322	3,801,608	1,347,364	436,354	5,088,632	2,066,049
16 and over - population	20,619,959*	344,037	6,565,651	190,571	4,112,707	1,440,400	440,172	5,407,574	2,114,978
16 and over % with dose 1	97.37%	>99%	96.46%	91.31%	93.99%	95.57%	>99%	95.54%	>99%
16 and over % with dose 2	95.75%	>99%	94.98%	88.85%	92.44%	93.54%	>99%	94.10%	97.69%
5 to 11 - dose 1	1,197,125	31,892	357,410	13,210	207,496	83,945	28,569	325,769	141,027
5 to 11 - dose 2	887,404	27,130	270,397	8,623	148,124	62,320	22,956	242,623	100,611
5 to 11 - population	2,276,638	39,789	716,460	24,750	478,731	148,816	45,033	578,499	244,154
5 to 11 % with dose 1	52.58%	80.15%	49.89%	53.37%	43.34%	56.41%	63.44%	56.31%	57.76%
5 to 11 % with dose 2	38.98%	68.18%	37.74%	34.84%	30.94%	41.88%	50.98%	41.94%	41.21%
12 to 15 - dose 1	1,051,432	20,114	323,257	10,807	206,091	68,313	22,891	274,719	115,678
12 to 15 - dose 2	995,762	19,584	308,933	9,737	192,749	64,566	21,776	262,914	107,178
12 to 15 - population	1,243,990	19,693	390,330	13,060	270,146	82,747	26,308	308,611	132,869
12 to 15 % with dose 1	84.52%	>99%	82.82%	82.75%	76.29%	82.56%	87.01%	89.02%	87.06%
12 to 15 % with dose 2	80.05%	>99%	79.15%	74.56%	71.35%	78.03%	82.77%	85.19%	80.66%

*National population will not equal sum of listed jurisdictions due to a small number of people counted in national population residing in some 'other' territories. Sum of state doses will not add to national total as some records are unable to be geocoded to a State or Territory. Doses sourced from Australian Immunisation Register, population from ABS ERP June 2020

Data as at:
06 Jun 2022

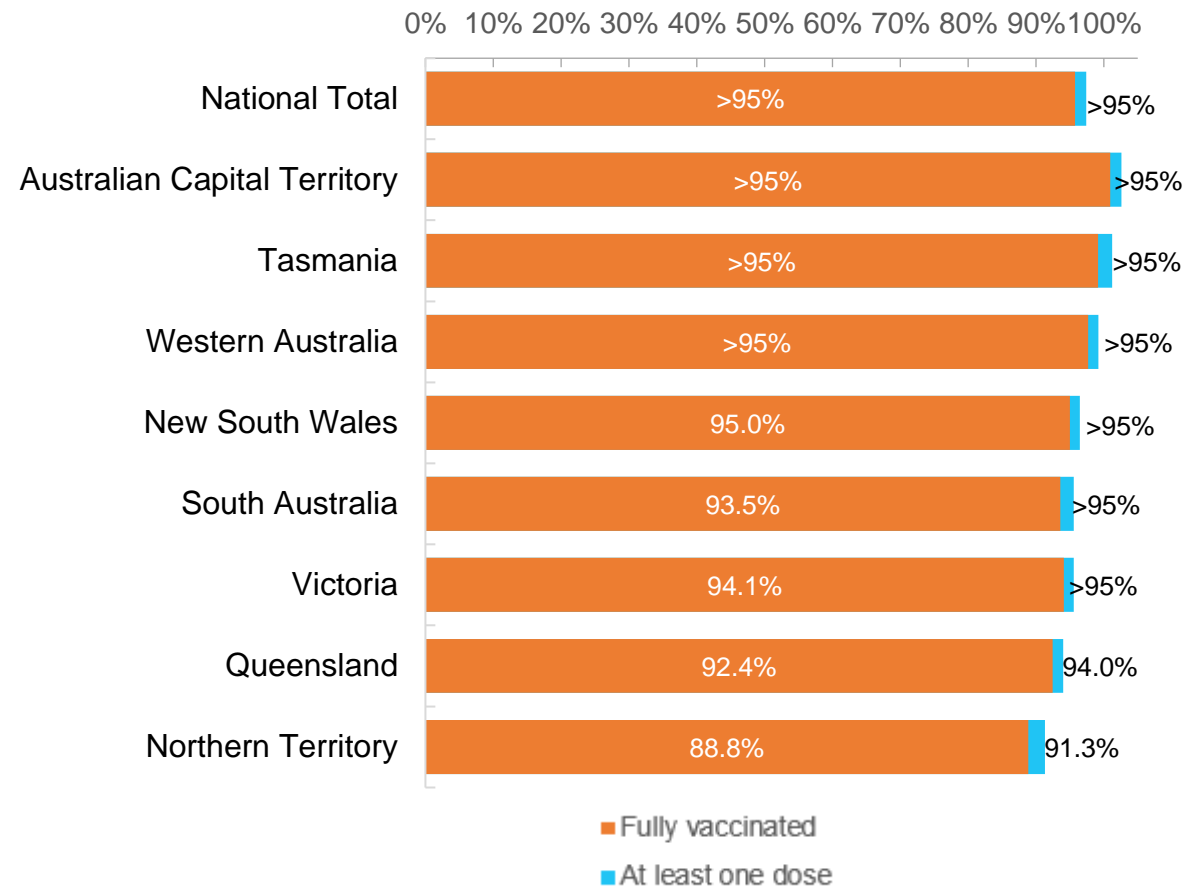
Vaccinations by location

Cumulative total doses administered vs eligible state populations*



*Not an indication of percentage vaccinated, numbers will exceed 100 due to multiple doses required per person of the population. All doses are included for those aged 12 and above, and are based on vaccination provider location.

First and Second Doses by residential location



Aboriginal and Torres Strait Islander peoples

Number of people vaccinated

Data as at:
31 May 2022
Updated weekly

Australia's COVID-19
Vaccine Roadmap



442,855

people over the age of 16
have had at least one dose

84.9%

of people over the age of 16
have had at least one dose



424,192

people over the age of 16
are fully vaccinated

81.4%

of people over the age of 16 are
fully vaccinated



People aged 12 – 15 years

48,345

42,517

68.3%

60.0%

At least one dose

Fully vaccinated

178 Aboriginal community controlled health services (ACCHS)

0#	50	27	44	12	3	21	21
ACT	NSW	NT	QLD	SA	TAS	VIC	WA

Medicare Address State ^{##}	Individuals Dose 1	Individuals Dose 1 %	Individuals Dose 2	Individuals Dose 2 %
Australian Capital Territory	4,785	91.4%	4,663	89.0%
New South Wales	136,223	87.3%	133,150	85.4%
Northern Territory	41,526	89.6%	39,512	85.3%
Queensland	116,270	81.8%	110,848	78.0%
South Australia	20,049	80.5%	18,653	74.9%
Tasmania	13,961	88.8%	13,553	86.2%
Victoria	35,691	90.4%	34,911	88.5%
Western Australia	53,737	86.7%	49,937	80.6%
Unknown/Other Territories	20,613	69.7%	18,965	64.1%
Totals	442,855	84.9%	424,192	81.4%

Source: Australian Immunisation Register

*Identifying as Aboriginal and Torres Strait Islander is optional and the estimated population may be under reported.

**Includes all Aboriginal and Torres Strait Islander peoples who have received a vaccination, not limited to those administered in an ACCHS setting

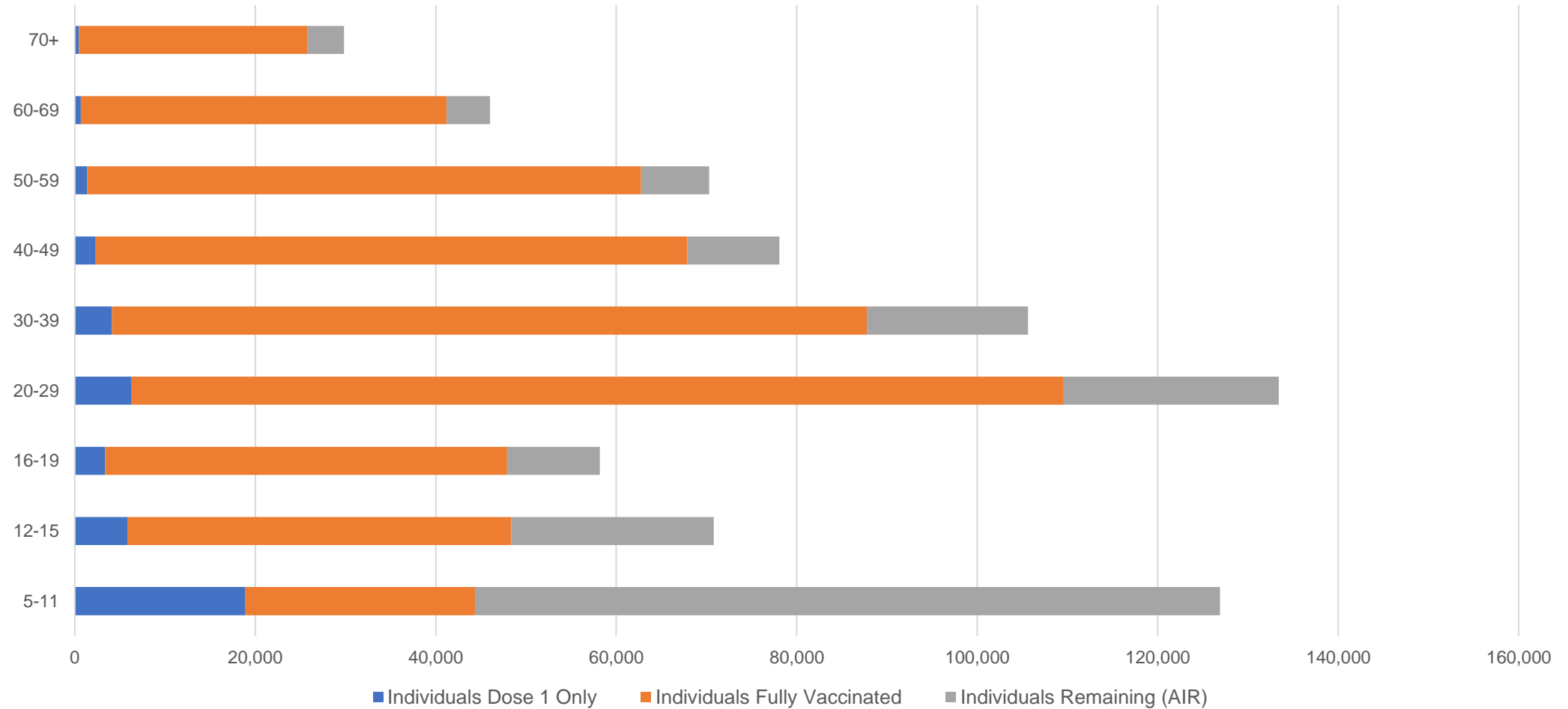
#ACCHS in the ACT are currently operating as a Commonwealth Vaccine Clinics so not included to avoid double counting

##The above table includes all identified Aboriginal and Torres Strait Islander people who are aged 16 and above by their state of residence.

Aboriginal and Torres Strait Islander peoples Number of people vaccinated by age

Data as at:
31 May 2022
Updated weekly

Australia's COVID-19
Vaccine Roadmap



Source: Australian Immunisation Register

Commonwealth primary care

Data as at:
06 Jun 2022

Australia's COVID-19
Vaccine Roadmap



Primary care vaccine administration sites

5,715	128	178	3,607
GPs	CVCs	ACCHS	Pharmacies



36,948,169 total vaccine doses administered
primary care settings as at 06 June
+ 40,531 recorded in the last 24 hours

Primary care vaccinations by provider type

	Doses administered	Daily increase	7 day increase
General Practice* includes other Commonwealth	29,594,400	28,430	189,867
Pharmacy	7,353,769	12,101	77,350



317,235

doses administered to persons
residing in other territories or with
missing residential information

*General practice includes Commonwealth Vaccination Clinics, Aboriginal Community Health Centres, Royal Flying Doctor Service and other Commonwealth vaccination facilities

Source: Australian Immunisation Register

Data as at:
06 Jun 2022

Commonwealth aged care and disability doses administered



1,304,197 (+ 509 last 24 hours)

Total vaccine doses administered in aged care and disability facilities as at 06 June

Number of doses administered as part of the Commonwealth aged and disability care rollout

NSW
568,221
(+295 daily increase)

VIC
245,555
(+115 daily increase)

QLD
207,366
(+42 daily increase)

WA
110,179
(<10 daily increase)

TAS
23,582
(<10 daily increase)

SA
85,336
(<10 daily increase)

ACT
17,729
(<10 daily increase)

NT
7,672
(<10 daily increase)

38,557

doses administered to persons residing in other territories or with missing residential information

Source: Australian Immunisation Register

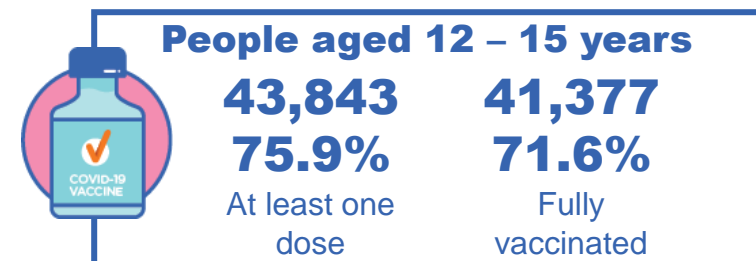
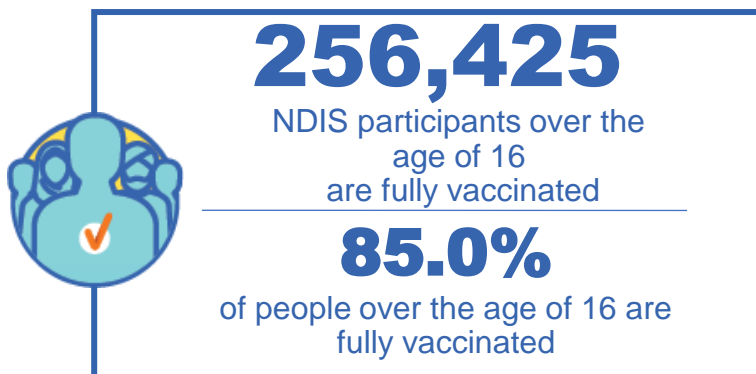
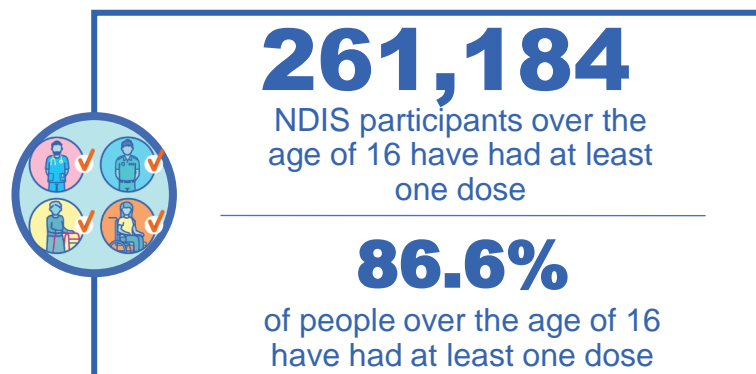
*Sourced from the Australian Immunisation Register. Includes all persons vaccinated at participating residential aged care, disability and related industry settings.

**State level breakdown indicates the residential location and may not align to the state in which the vaccination occurred.

National Disability Insurance Scheme (NDIS) reported vaccinations

Data as at:
02 June 2022
Updated weekly

Australia's COVID-19
Vaccine Roadmap



NDIS participant vaccinations

	People aged 16+ with at least one dose	People aged 16+ fully vaccinated	% People aged 16+ with at least one dose	% People aged 16+ fully vaccinated
ACT	4,929	4,861	88.8%	87.6%
NSW	80,045	78,751	87.2%	85.8%
NT	2,265	2,198	77.6%	75.3%
QLD	51,652	50,676	84.7%	83.1%
SA	21,354	20,846	84.3%	82.3%
TAS	6,539	6,388	87.0%	85.0%
VIC	69,437	68,262	87.8%	86.3%
WA	24,963	24,443	87.9%	86.1%
National	261,184	256,425	86.6%	85.0%

Source: Linkage between National Disability Insurance Agency data and the Australian Immunisation Register. Total NDIS participant numbers as at 30 May. Australian Immunisation Register data as at 01 June. Includes all participants regardless of residence type.

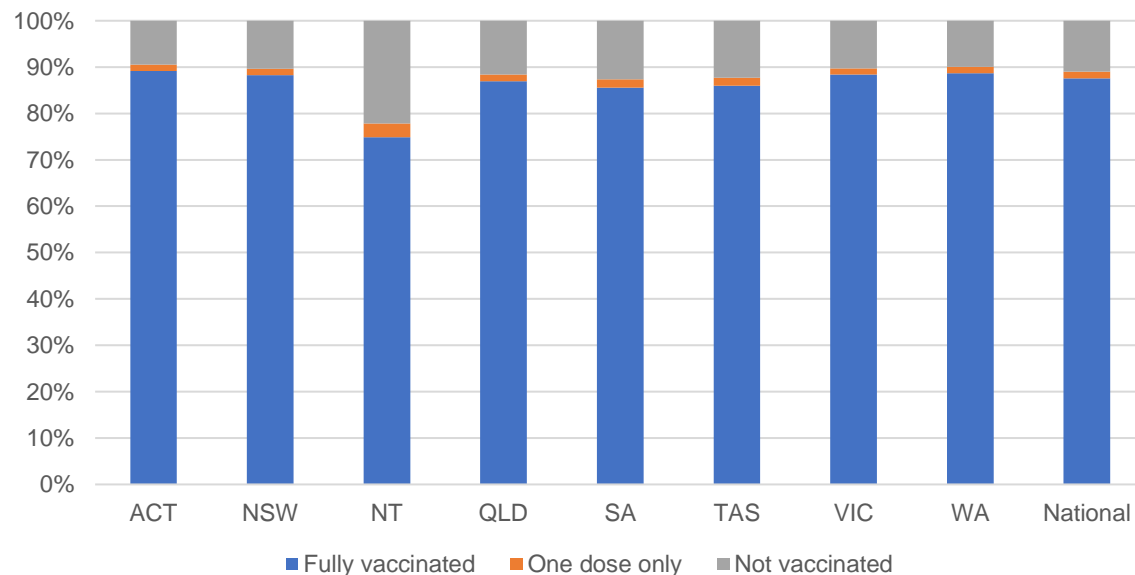
National Disability Insurance Scheme (NDIS) reported vaccinations

Data as at:
02 June 2022
Updated weekly

Australia's COVID-19
Vaccine Roadmap

NATIONAL	Total people with at least one dose	People fully vaccinated	Total number of individuals in cohort	% People with at least one dose	% People fully vaccinated
NDIS participants living in disability accommodation	20,872	20,537	23,469	88.9%	87.5%

NDIS participants in disability and aged care accommodation



Source: Linkage between National Disability Insurance Agency data and the Australian Immunisation Register. Includes participants residing in disability accommodation only.

Source: Total NDIS participant numbers as at 30 May. Participant data as at 31 May. Australian Immunisation Register data as at 01 June. Worker data as at 02 June.

NDIS workforce vaccinations

	NDIS workers with at least one dose	NDIS workers fully vaccinated	% NDIS workers with at least one dose	% NDIS workers fully vaccinated
NSW	126,380	121,370	98.2%	94.4%
VIC	117,785	114,472	98.4%	95.6%
QLD	71,137	70,199	97.7%	96.4%
WA	34,364	32,891	98.7%	94.5%
SA	35,871	33,669	98.6%	92.5%
TAS	10,860	10,618	99.5%	97.3%
ACT	12,303	12,281	99.8%	99.6%
NT	3,929	3,781	99.6%	95.9%
TOTAL	412,629	399,281	98.4%	95.2%

Source: the NDIS Commission has established a requirement for registered NDIS providers who provide intensive disability support services to report on the vaccination status of workers they employ, or otherwise engage, to deliver NDIS-funded supports and services, and who are required to be vaccinated in accordance with in-force state and territory public health orders. The statistics reflect data reported to the NDIS Commission by registered NDIS providers and should be considered indicative and subject to change

Note: Some registered NDIS providers are yet to report on the vaccination status of their workforce. The NDIS Commission is working with those providers around reporting requirements.

Remaining workers not included include those exempt from vaccination requirements, workers whose vaccination status is not yet verified by the provider (such as workers on leave) and provider reporting anomalies.

Residential aged care vaccination rollout

Residential aged care facilities status

176,176 **177,586**

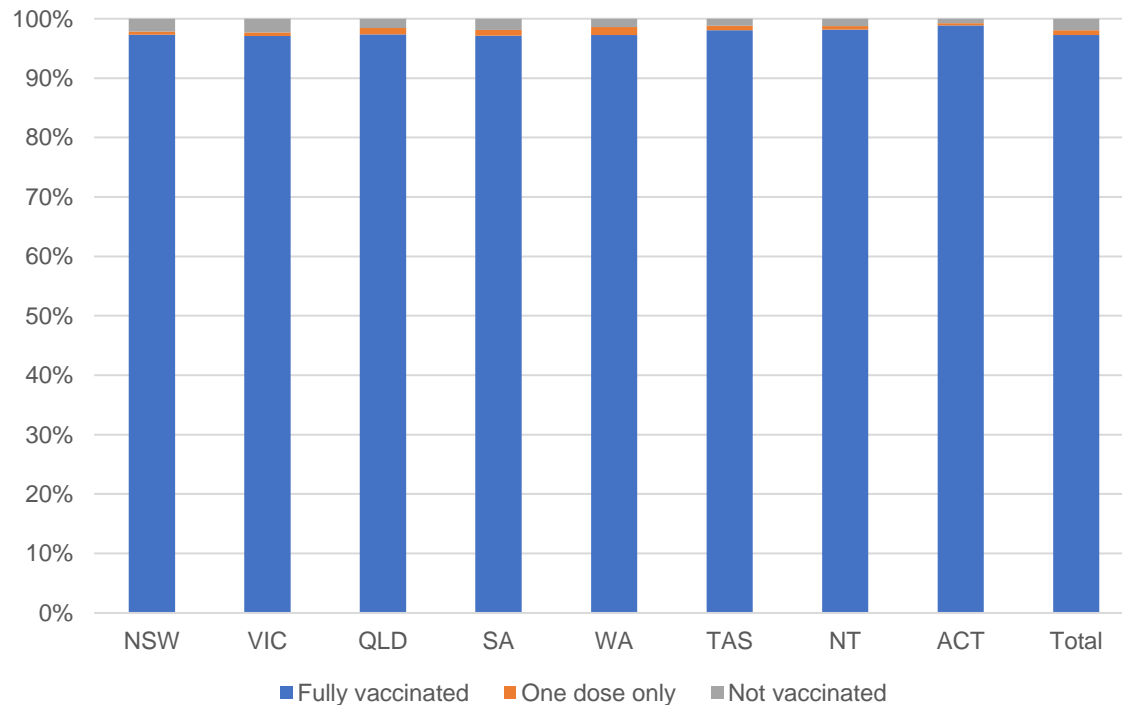
People fully vaccinated

People with at least one dose

Australia's COVID-19 Vaccine Roadmap

Data as at:
02 June 2022
Updated weekly

Aged care resident vaccinations



Aged care worker vaccinations

Jurisdictions	Total workers with at least one dose	Workers fully vaccinated	% Workers with at least one dose	% Workers fully vaccinated
NSW	76,590	76,582	99.8%	99.8%
VIC	70,104	70,102	99.0%	99.0%
QLD	48,107	48,102	99.5%	99.5%
SA	27,301	27,289	99.5%	99.5%
WA	24,534	24,529	100.0%	100.0%
TAS	7,598	7,596	100.0%	100.0%
NT	902	902	100.0%	100.0%
ACT	2,946	2,946	100.0%	100.0%
Total	258,082	258,048	99.5%	99.5%

Source: My Aged Care Portal vaccination progress

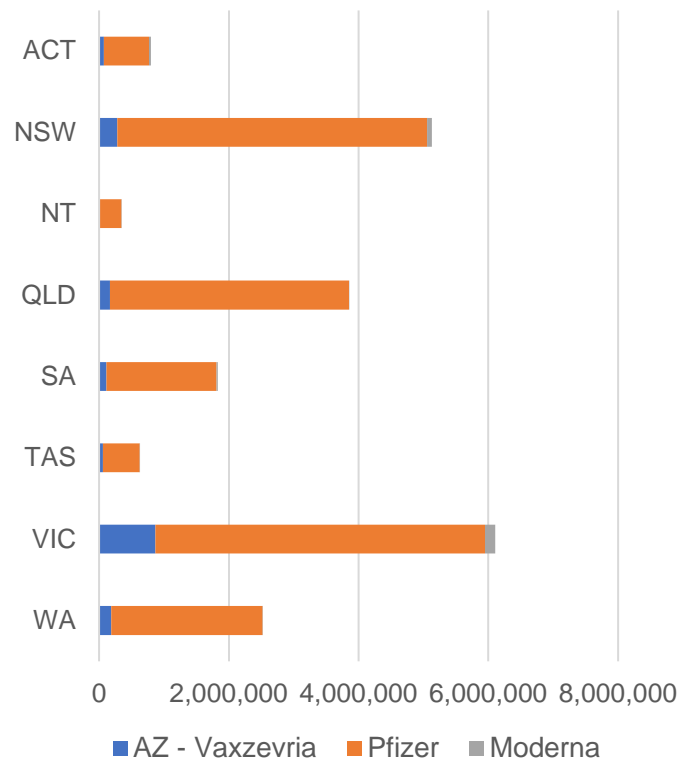
*Status updates are provided by facilities at least once per week. Reporting is updated Monday to Friday to encompass different facility updates being made on different days.

Data is sourced directly from Aged Care Service Providers and is not drawn or closely aligned with data from AIR due to inconsistencies and potential lags in uploading of records.

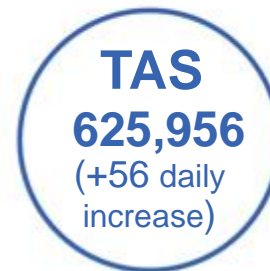
Data as at:
06 Jun 2022

Jurisdiction administered

Total vaccine doses administered in State and Territory clinics as at 06 June



21,223,505 total vaccine doses administered in State and Territory clinics as at 06 June
 + **3,428** recorded in the last 24 hours
 + **30,569** recorded in the last 7 days

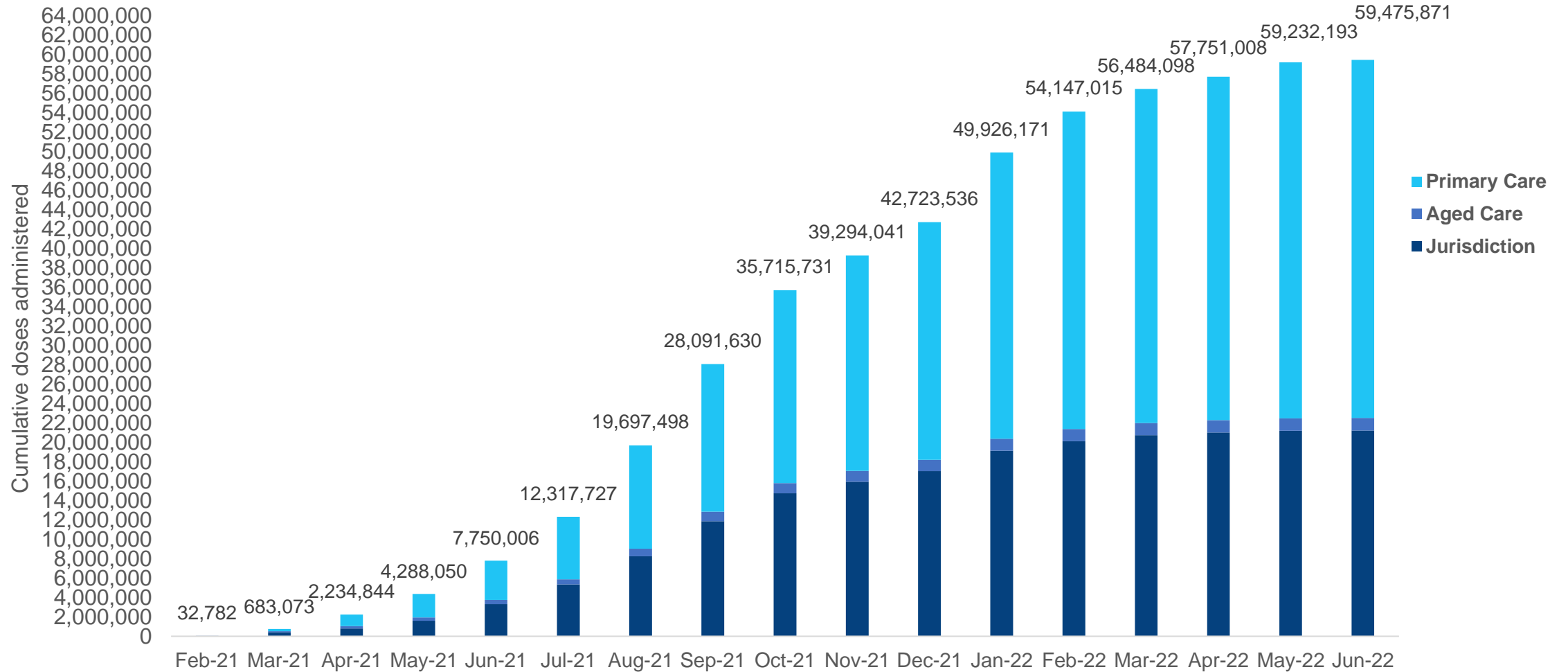


*Sourced from the Australian Immunisation Register. Numbers are calculated as difference in daily cumulative reported numbers to allow for historical corrections.

Source: Australian Immunisation Register

Cumulative doses administered by channel

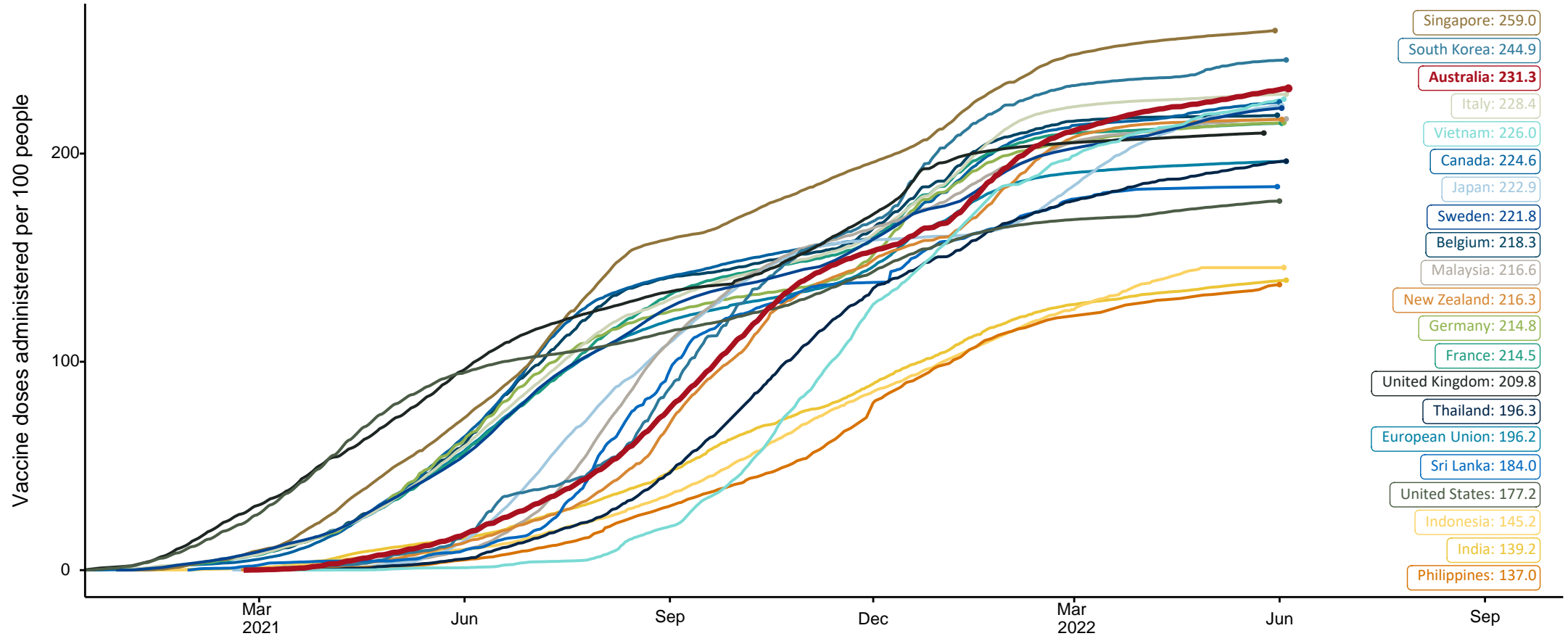
Data as at:
06 Jun 2022



Source: Australian Immunisation Register

COVID-19 vaccine doses per 100, Australia and select countries

Data as at:
05 June 2022
Updated weekly

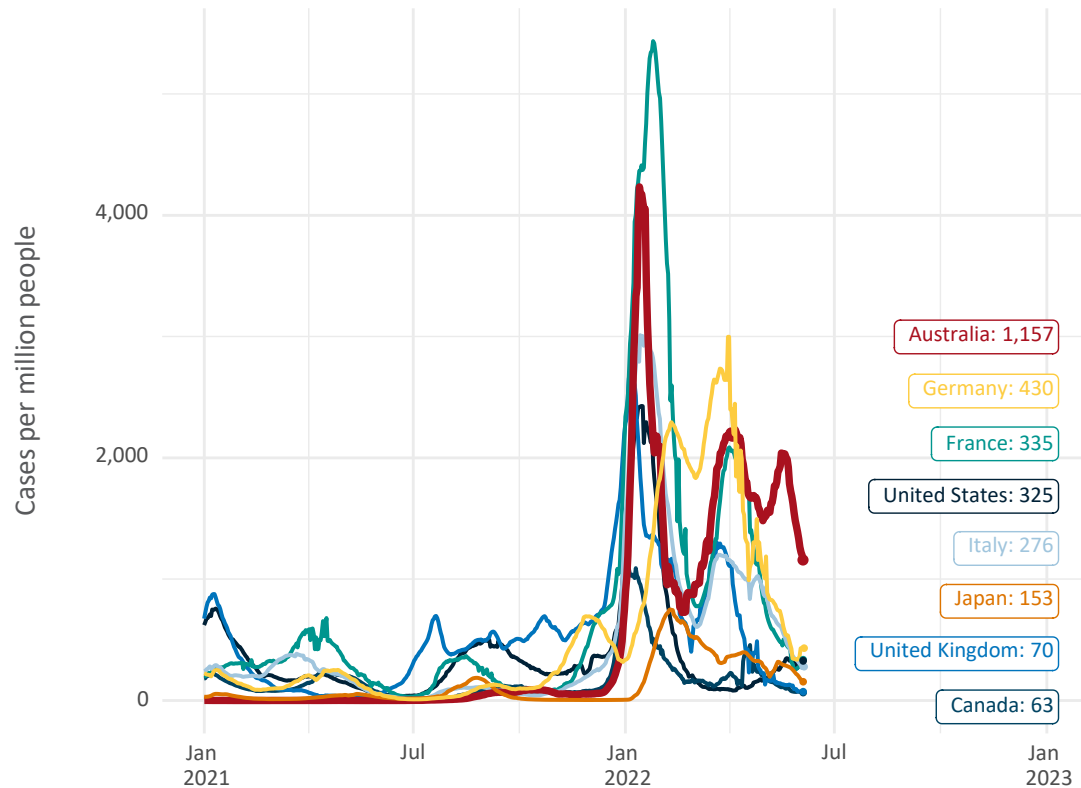


Note: From 11 January 2022, data for Australia includes all doses administered to people 5 and over. Prior to 11 January, data was for 12 and over.
Source: Department of Health (Australia), Our World in Data (international)
Latest data: 05 June

Data as at:
05 June 2022
Updated weekly

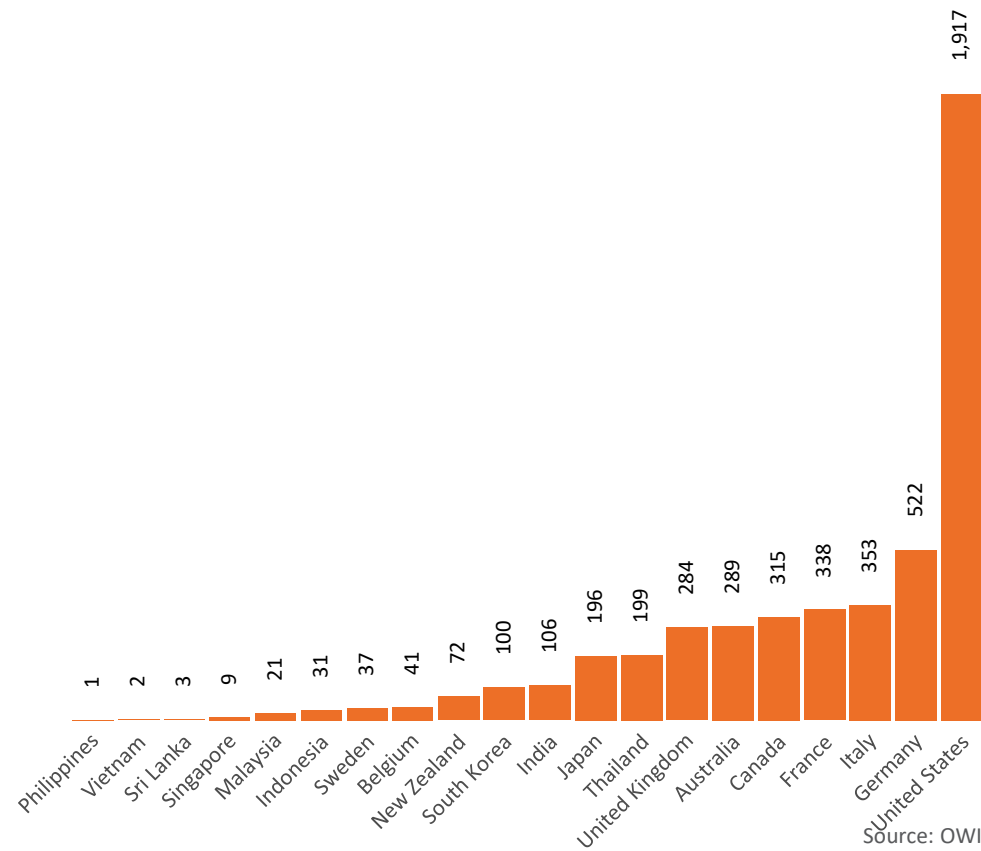
International data – COVID-19

New daily cases per million since 2021, Australia and G7 countries
Smoothed - 7 day average



Source: OWID
Data downloaded: 06 Jun 2022 11:20
Latest data: 05 Jun 2022

COVID-19 deaths in past 7 days - Australia and select countries



Source: OWID
Data downloaded: 06 Jun 2022 11:20
Latest data: 05 Jun 2022