




Australian Government
Operation COVID Shield

COVID-19 Vaccine Roll-out

06 June 2022


Data as at:
05 Jun 2022

Total vaccine doses



20,076,405
people have had at least one dose

>95%
of people over the age of 16 have had at least one dose



19,741,825
people are fully vaccinated

>95%
of people over the age of 16 are fully vaccinated



13,742,350
people over the age of 16 who have received three or more doses



59,431,403 total vaccine doses administered nationally as at 05 June

+6,703 recorded in the last 24 hours

NSW
18,430,432
(+2,208 daily increase)

VIC
15,604,964
(+1,669 daily increase)

QLD
11,237,870
(+1,129 daily increase)

WA
6,543,483
(+696 daily increase)

TAS
1,345,627
(+136 daily increase)

SA
4,123,115
(+635 daily increase)

ACT
1,556,063
(+214 daily increase)

NT
589,849
(+16 daily increase)

*Administration state breakdown indicates state in which a vaccine was administered

**Overall dose count includes instances of more than three doses per person in a small number of cases.

Source: Australian Immunisation Register

Booster Vaccinations

Data as at:
05 Jun 2022



221,591

Indigenous people who have received three or more doses

53.6%

of eligible population (413,219)



165,241

Aged Care Residents who have received three or more doses##

93.8%

of eligible population (176,176)



189,631

NDIS participants

who have received three or more doses#

74.7%

of eligible population (254,000)

21,729

NDIS residents

who have received three or more doses#

89.1%

of eligible population (24,000)



13,742,350

total people who have received three or more doses

+1,723 daily increase

70.1% of eligible population (19,601,812)

	Number of People	Daily Increase	% of Eligible
NSW	4,191,351	591	67.5%
VIC	3,667,761	447	72.4%
QLD	2,378,830	305	63.2%
WA	1,690,594	188	83.2%
SA	979,411	207	73.5%
TAS	314,135	37	72.6%
ACT	271,885	34	78.5%
NT	130,133	<10	77.6%

118,250

doses administered to persons residing in other territories or with missing residential information

*People may belong to multiple groups and could be represented in the above breakdowns multiple times.
NDIS participants data as at 01 June 2022. ## Aged Care Residents data as at 03 June 2022.

Source: Australian Immunisation Register

Data as at:
05 Jun 2022

Winter / Fourth Doses



1,707,545 total people (16+) who have received four or more doses

+3,794 daily increase

1,519,754
People aged 65+ who have received four or more doses

50.5%
of eligible population (3,010,211)

	Number of People 16+	Daily Increase
ACT	35,620	77
NSW	552,145	1,352
NT	7,458	<10
QLD	323,880	615
SA	136,779	377
TAS	47,805	60
VIC	429,015	883
WA	166,652	424

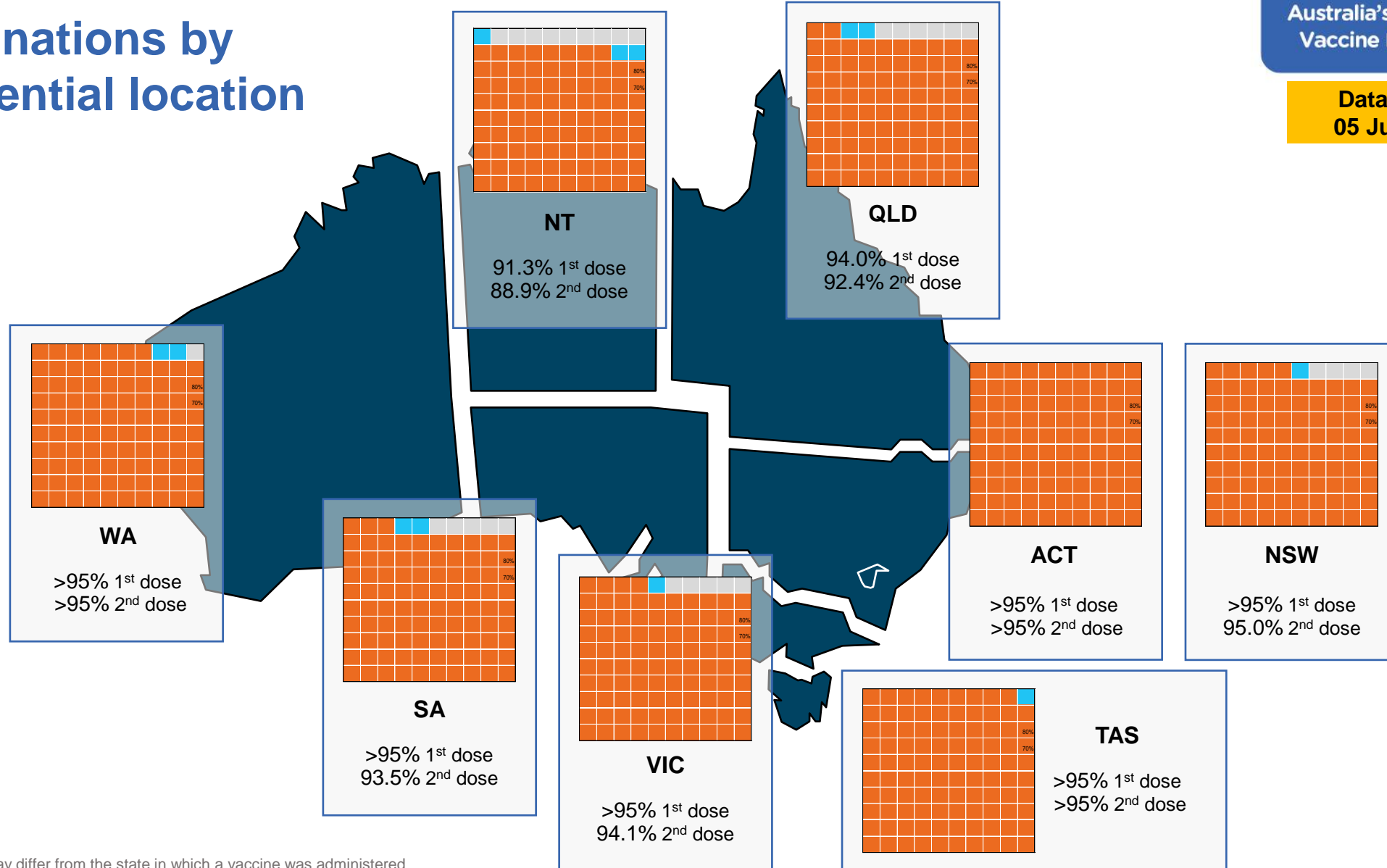
8,191 doses administered to persons residing in other territories or with missing residential information

*People become eligible for a winter booster four months after their third dose.

Source: Australian Immunisation Register

Data as at:
05 Jun 2022

Vaccinations by residential location



*Residential state may differ from the state in which a vaccine was administered

Commonwealth and Jurisdiction vaccine doses administered

Data as at:
05 Jun 2022



59,431,403 total vaccine doses administered nationally as at 05 June

+ 6,703 recorded in the last 24 hours



21,220,077

doses administered by state and territory facilities

+ 1,491

recorded in the last 24 hours

NSW	Jurisdictions	Commonwealth
Cumulative	5,130,398	13,300,034
Daily increase	280	1,928

TAS	Jurisdictions	Commonwealth
Cumulative	625,900	719,727
Daily increase	119	17

VIC	Jurisdictions	Commonwealth
Cumulative	6,111,105	9,493,859
Daily increase	454	1,215

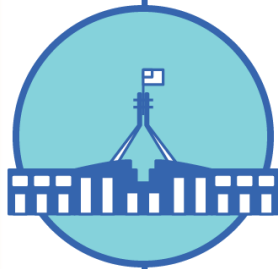
SA	Jurisdictions	Commonwealth
Cumulative	1,832,378	2,290,737
Daily increase	237	398

QLD	Jurisdictions	Commonwealth
Cumulative	3,854,672	7,383,198
Daily increase	110	1,019

ACT	Jurisdictions	Commonwealth
Cumulative	798,343	757,720
Daily increase	66	148

WA	Jurisdictions	Commonwealth
Cumulative	2,521,458	4,022,025
Daily increase	213	483

NT	Jurisdictions	Commonwealth
Cumulative	345,823	244,026
Daily increase	12	<10



38,211,326

doses administered by commonwealth facilities

+ 5,212

recorded in the last 24 hours

36,907,638 total vaccine doses administered in primary care settings

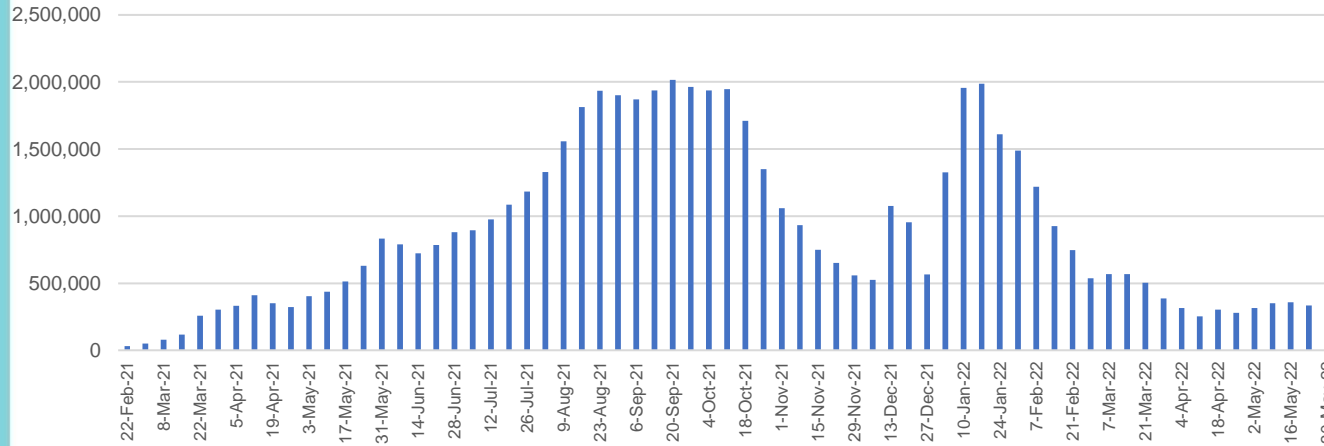
1,303,688 total vaccine doses administered in aged care and disability settings

Vaccine milestone charts

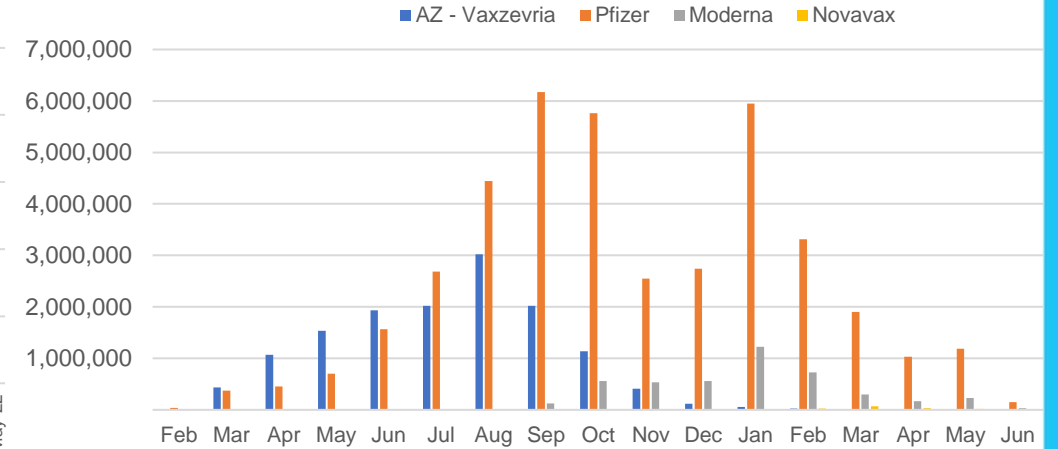
Data as at:
05 Jun 2022

Australia's COVID-19
Vaccine Roadmap

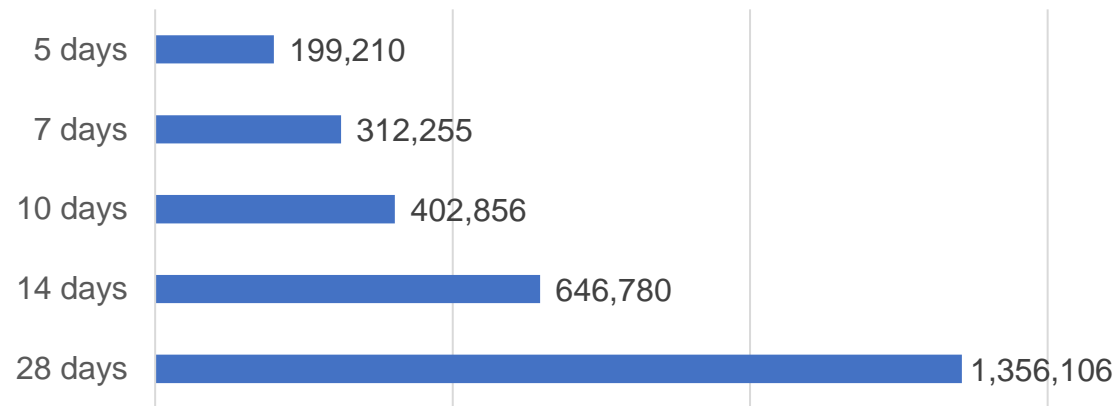
Doses Administered by Week



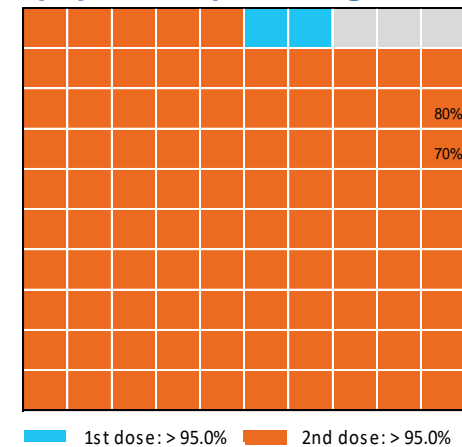
Doses by administration month and vaccine type



Doses Reported



Eligible population percentage coverage



*Each square represents 1% of the national population. Squares are filled as milestones are achieved.

*Sourced from the Australian Immunisation Register.

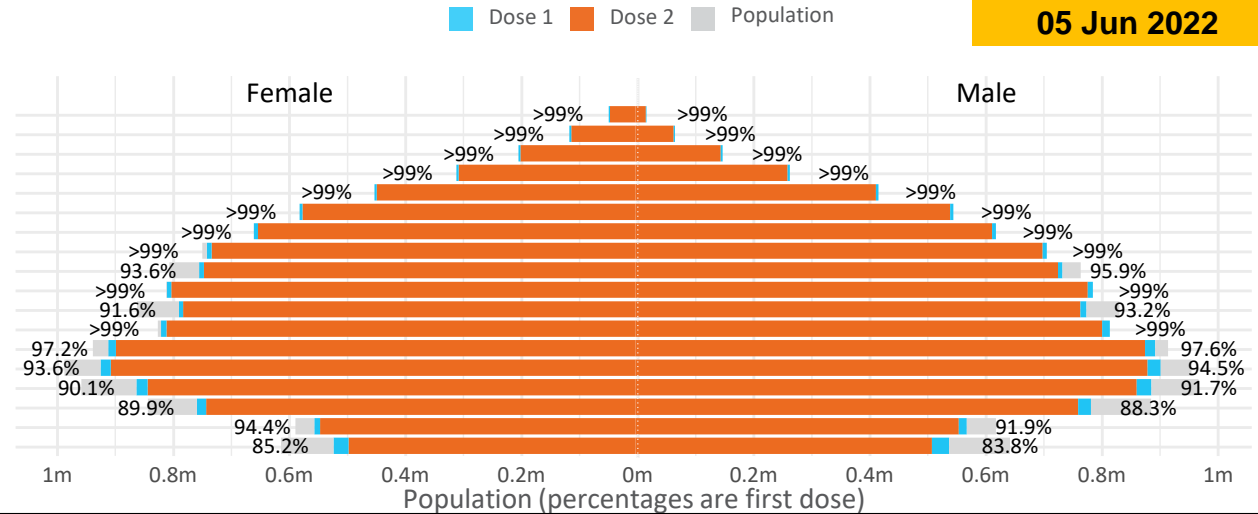
Doses by age and sex

First and second doses by age and sex

	16+	50+	12-15	5-11
Dose 1	97.36% (20,076,405 doses / 20,619,959 people)	>99% (8,902,595 doses / 8,749,703 people)	84.53% (1,051,585 doses / 1,243,990 people)	52.60% (1,197,425 doses / 2,276,638 people)
Dose 2	95.74% (19,741,825 doses / 20,619,959 people)	>99% (8,795,550 doses / 8,749,703 people)	80.06% (995,952 doses / 1,243,990 people)	38.95% (886,813 doses / 2,276,638 people)

Data as at:
05 Jun 2022

Age	Dose 1	Dose 2
95+	64,322 (>99%)	60,905 (>99%)
90-94	180,384 (>99%)	174,842 (>99%)
85-89	348,658 (>99%)	341,798 (>99%)
80-84	569,236 (>99%)	562,039 (>99%)
75-79	860,848 (>99%)	852,470 (>99%)
70-74	1,117,589 (>99%)	1,106,351 (>99%)
65-69	1,268,233 (>99%)	1,253,692 (>99%)
60-64	1,435,543 (>99%)	1,419,277 (98.8%)
55-59	1,475,637 (94.9%)	1,459,005 (93.8%)
50-54	1,582,145 (>99%)	1,565,171 (>99%)
45-49	1,551,145 (92.5%)	1,532,722 (91.4%)
40-44	1,622,491 (>99%)	1,598,484 (98.7%)
35-39	1,791,899 (97.7%)	1,759,790 (95.9%)
30-34	1,817,807 (94.5%)	1,776,033 (92.3%)
25-29	1,743,441 (91.4%)	1,695,906 (89.0%)
20-24	1,532,423 (89.5%)	1,492,638 (87.2%)
16-19	1,114,604 (93.2%)	1,090,702 (91.2%)
12-15	1,051,585 (84.5%)	995,952 (80.1%)



	AUS	ACT	NSW	NT	QLD	SA	TAS	VIC	WA
16 and over - dose 1	20,076,405	352,915	6,332,468	174,053	3,864,885	1,376,465	445,333	5,165,774	2,097,263
16 and over - dose 2	19,741,825	347,238	6,235,249	169,366	3,801,179	1,347,287	436,306	5,088,212	2,066,107
16 and over - population	20,619,959*	344,037	6,565,651	190,571	4,112,707	1,440,400	440,172	5,407,574	2,114,978
16 and over % with dose 1	97.36%	>99%	96.45%	91.33%	93.97%	95.56%	>99%	95.53%	>99%
16 and over % with dose 2	95.74%	>99%	94.97%	88.87%	92.43%	93.54%	>99%	94.09%	97.69%
5 to 11 - dose 1	1,197,425	31,894	357,487	13,208	207,604	83,966	28,571	325,821	141,088
5 to 11 - dose 2	886,813	27,132	270,086	8,611	148,057	62,290	22,949	242,432	100,637
5 to 11 - population	2,276,638	39,789	716,460	24,750	478,731	148,816	45,033	578,499	244,154
5 to 11 % with dose 1	52.60%	80.16%	49.90%	53.37%	43.37%	56.42%	63.44%	56.32%	57.79%
5 to 11 % with dose 2	38.95%	68.19%	37.70%	34.79%	30.93%	41.86%	50.96%	41.91%	41.22%
12 to 15 - dose 1	1,051,585	20,119	323,282	10,809	206,110	68,321	22,904	274,755	115,741
12 to 15 - dose 2	995,952	19,590	308,955	9,739	192,777	64,584	21,787	262,959	107,249
12 to 15 - population	1,243,990	19,693	390,330	13,060	270,146	82,747	26,308	308,611	132,869
12 to 15 % with dose 1	84.53%	>99%	82.82%	82.76%	76.30%	82.57%	87.06%	89.03%	87.11%
12 to 15 % with dose 2	80.06%	>99%	79.15%	74.57%	71.36%	78.05%	82.82%	85.21%	80.72%

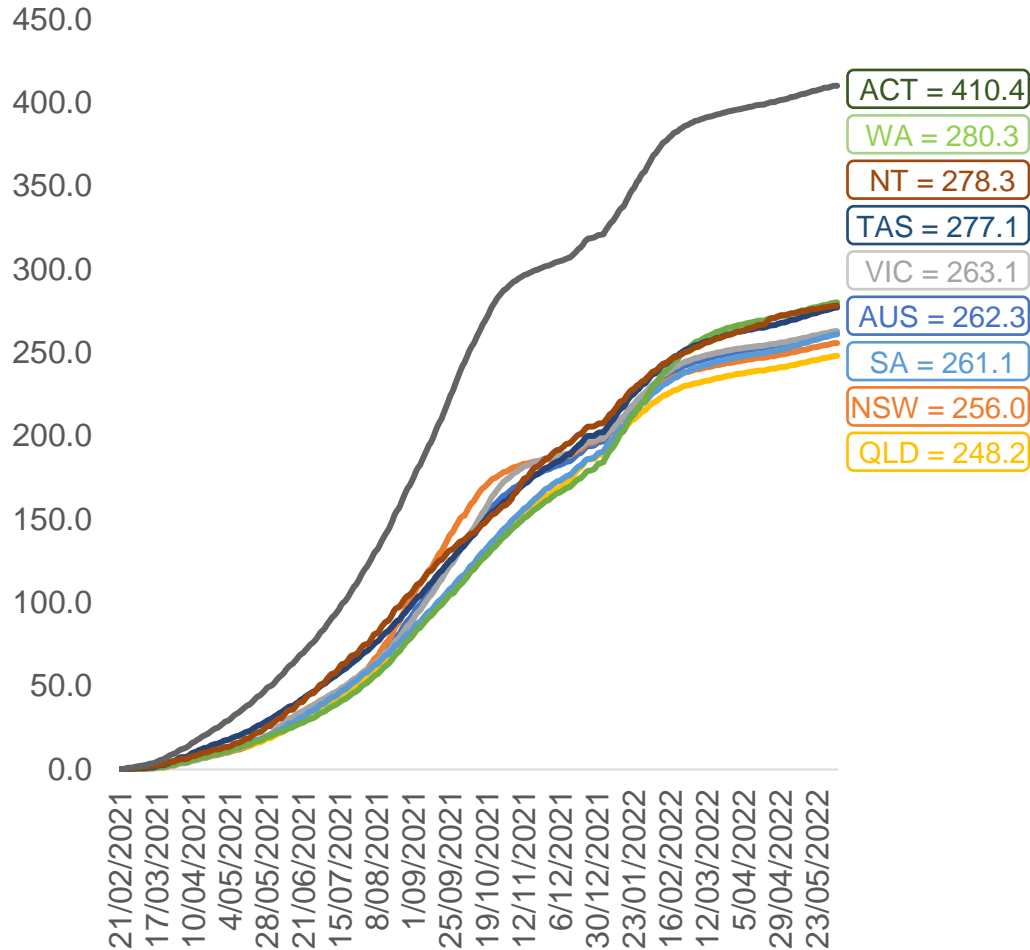
*National population will not equal sum of listed jurisdictions due to a small number of people counted in national population residing in some 'other' territories. Sum of state doses will not add to national total as some records are unable to be geocoded to a State or Territory.
Doses sourced from Australian Immunisation Register, population from ABS ERP June 2020

Vaccinations by location

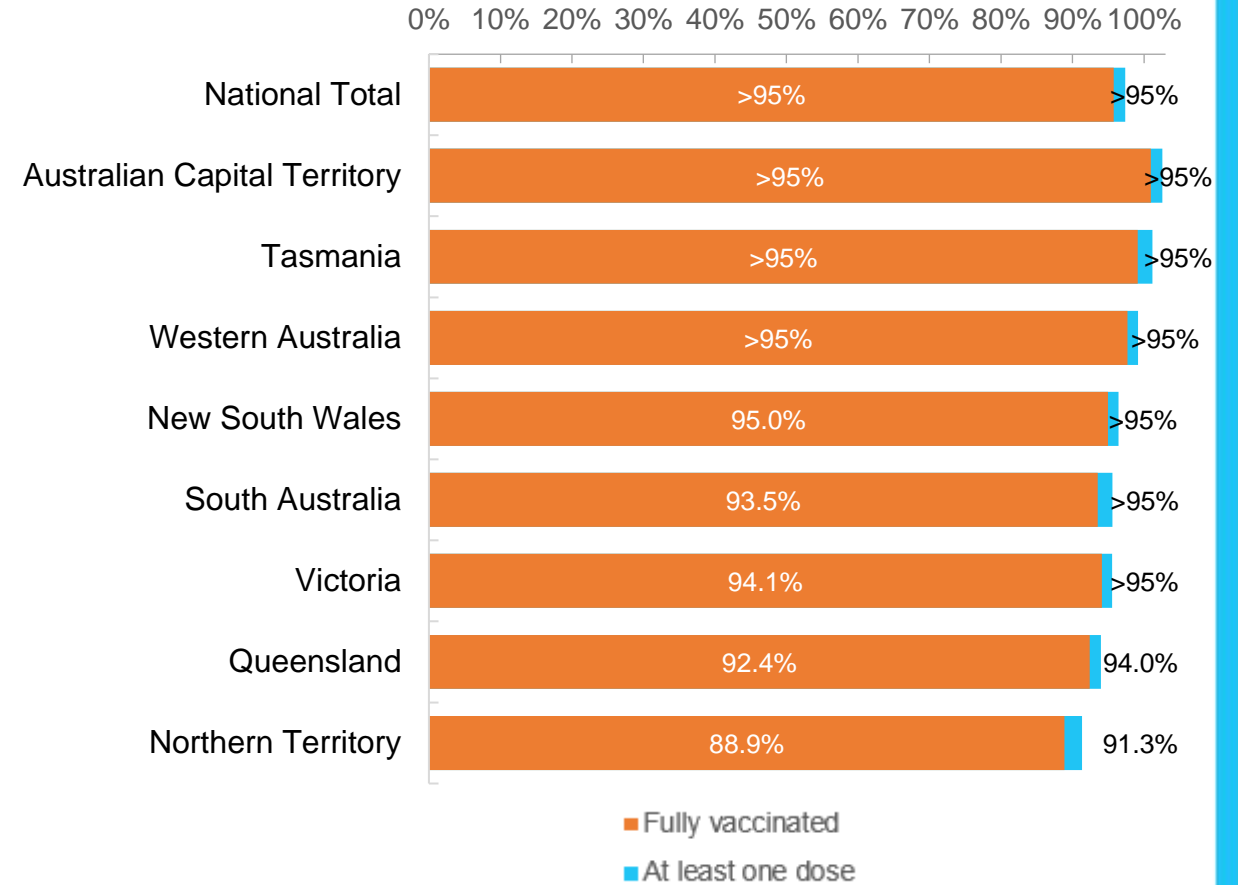
Data as at:
05 Jun 2022

Australia's COVID-19
Vaccine Roadmap

Cumulative total doses administered vs eligible state populations*



First and Second Doses by residential location



*Not an indication of percentage vaccinated, numbers will exceed 100 due to multiple doses required per person of the population. All doses are included for those aged 12 and above, and are based on vaccination provider location.

Aboriginal and Torres Strait Islander peoples

Number of people vaccinated

Data as at:
31 May 2022
Updated weekly

Australia's COVID-19
Vaccine Roadmap



442,855

people over the age of 16
have had at least one dose

84.9%

of people over the age of 16
have had at least one dose



424,192

people over the age of 16
are fully vaccinated

81.4%

of people over the age of 16 are
fully vaccinated



People aged 12 – 15 years

48,345

42,517

68.3%

60.0%

At least one dose

Fully vaccinated

178 Aboriginal community controlled health services (ACCHS)

0#	50	27	44	12	3	21	21
ACT	NSW	NT	QLD	SA	TAS	VIC	WA

Medicare Address State ^{##}	Individuals Dose 1	Individuals Dose 1 %	Individuals Dose 2	Individuals Dose 2 %
Australian Capital Territory	4,785	91.4%	4,663	89.0%
New South Wales	136,223	87.3%	133,150	85.4%
Northern Territory	41,526	89.6%	39,512	85.3%
Queensland	116,270	81.8%	110,848	78.0%
South Australia	20,049	80.5%	18,653	74.9%
Tasmania	13,961	88.8%	13,553	86.2%
Victoria	35,691	90.4%	34,911	88.5%
Western Australia	53,737	86.7%	49,937	80.6%
Unknown/Other Territories	20,613	69.7%	18,965	64.1%
Totals	442,855	84.9%	424,192	81.4%

Source: Australian Immunisation Register

*Identifying as Aboriginal and Torres Strait Islander is optional and the estimated population may be under reported.

**Includes all Aboriginal and Torres Strait Islander peoples who have received a vaccination, not limited to those administered in an ACCHS setting

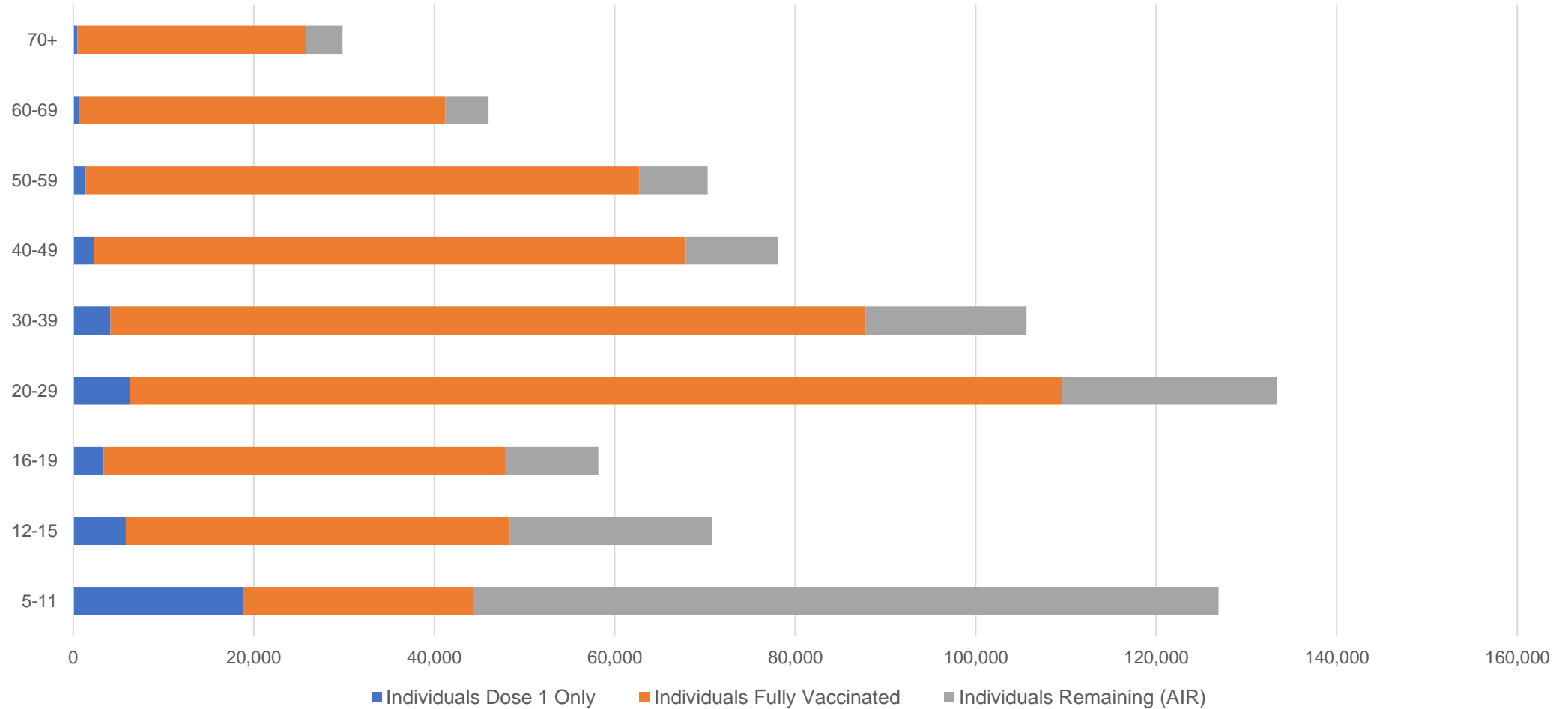
#ACCHS in the ACT are currently operating as a Commonwealth Vaccine Clinics so not included to avoid double counting

##The above table includes all identified Aboriginal and Torres Strait Islander people who are aged 16 and above by their state of residence.

Aboriginal and Torres Strait Islander peoples Number of people vaccinated by age

Data as at:
31 May 2022
Updated weekly

Australia's COVID-19
Vaccine Roadmap



Source: Australian Immunisation Register

Commonwealth primary care

Data as at:
05 Jun 2022

Australia's COVID-19
Vaccine Roadmap



Primary care vaccine administration sites

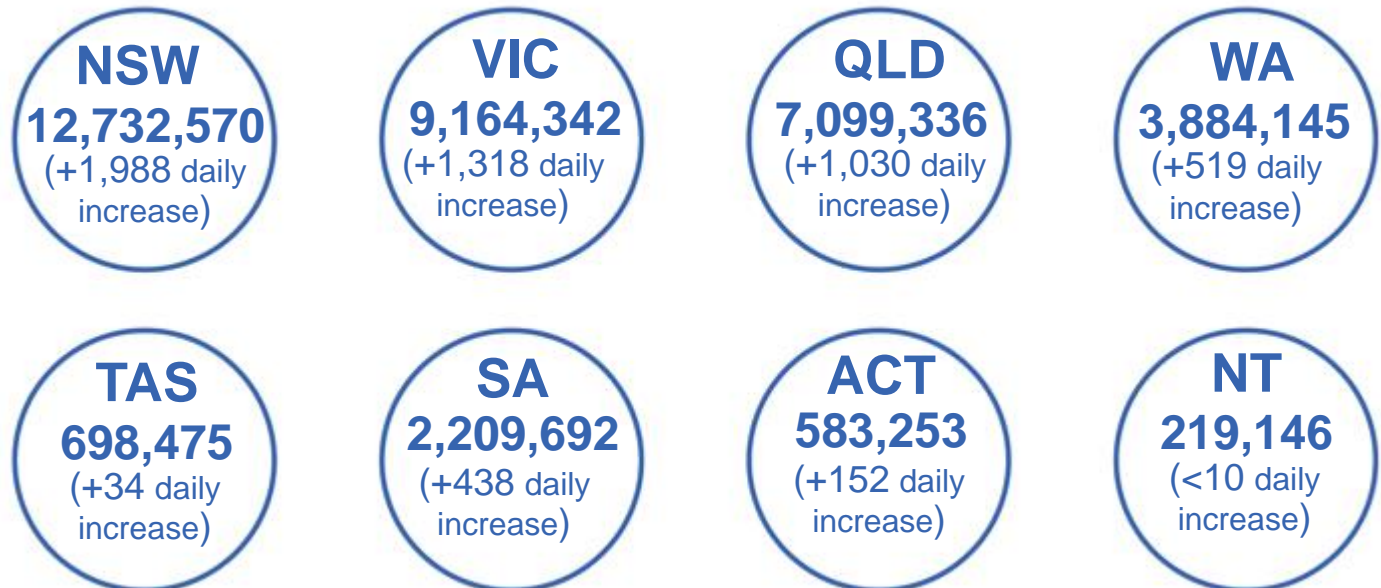
5,714	128	178	3,601
GPs	CVCs	ACCHS	Pharmacies



36,907,638 total vaccine doses administered
primary care settings as at 05 June
+ 5,178 recorded in the last 24 hours

Primary care vaccinations by provider type

	Doses administered	Daily increase	7 day increase
General Practice* includes other Commonwealth	29,565,970	3,694	195,636
Pharmacy	7,341,668	1,484	78,940



316,679

doses administered to persons residing in other territories or with missing residential information

*General practice includes Commonwealth Vaccination Clinics, Aboriginal Community Health Centres, Royal Flying Doctor Service and other Commonwealth vaccination facilities

Source: Australian Immunisation Register

Data as at:
05 Jun 2022

Commonwealth aged care and disability doses administered



1,303,688 (+ 34 last 24 hours)

Total vaccine doses administered in aged care and disability facilities as at 05 June

Number of doses administered as part of the Commonwealth aged and disability care rollout

NSW
567,926
(<10 daily increase)

VIC
245,440
(<10 daily increase)

QLD
207,324
(<10 daily increase)

WA
110,207
(<10 daily increase)

TAS
23,583
(<10 daily increase)

SA
85,329
(+37 daily increase)

ACT
17,729
(<10 daily increase)

NT
7,675
(<10 daily increase)

38,475

doses administered to persons residing in other territories or with missing residential information

*Sourced from the Australian Immunisation Register. Includes all persons vaccinated at participating residential aged care, disability and related industry settings.

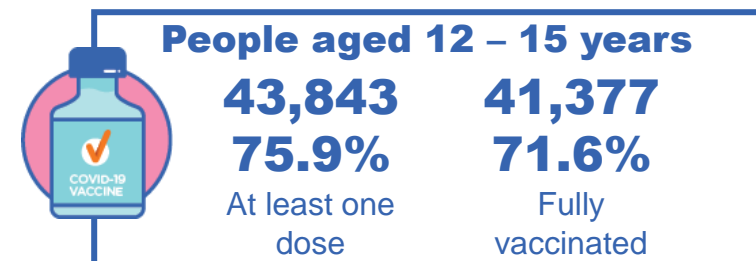
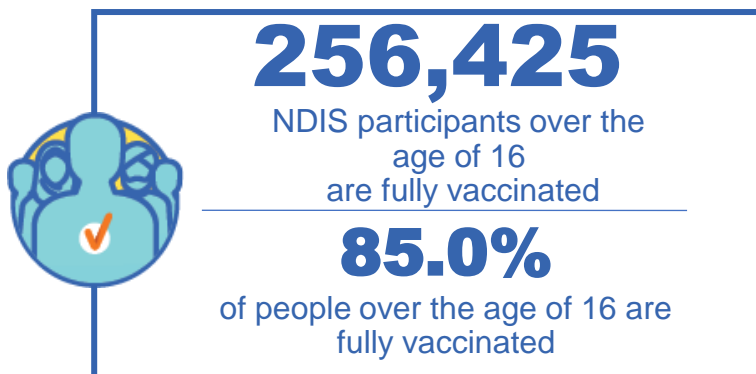
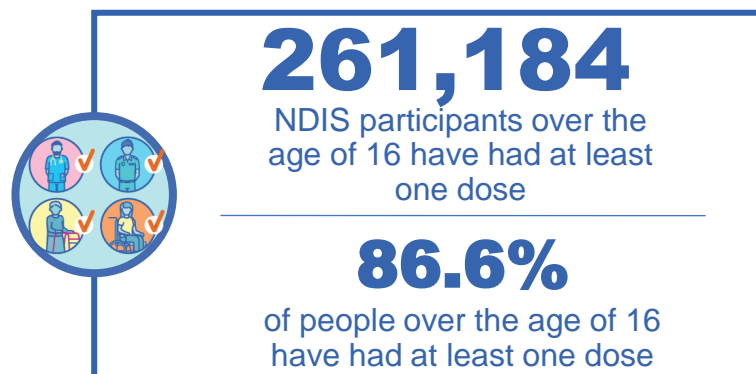
**State level breakdown indicates the residential location and may not align to the state in which the vaccination occurred.

Source: Australian Immunisation Register

National Disability Insurance Scheme (NDIS) reported vaccinations

Data as at:
02 June 2022
Updated weekly

Australia's COVID-19
Vaccine Roadmap



NDIS participant vaccinations

	People aged 16+ with at least one dose	People aged 16+ fully vaccinated	% People aged 16+ with at least one dose	% People aged 16+ fully vaccinated
ACT	4,929	4,861	88.8%	87.6%
NSW	80,045	78,751	87.2%	85.8%
NT	2,265	2,198	77.6%	75.3%
QLD	51,652	50,676	84.7%	83.1%
SA	21,354	20,846	84.3%	82.3%
TAS	6,539	6,388	87.0%	85.0%
VIC	69,437	68,262	87.8%	86.3%
WA	24,963	24,443	87.9%	86.1%
National	261,184	256,425	86.6%	85.0%

Source: Linkage between National Disability Insurance Agency data and the Australian Immunisation Register. Total NDIS participant numbers as at 30 May. Australian Immunisation Register data as at 01 June. Includes all participants regardless of residence type.

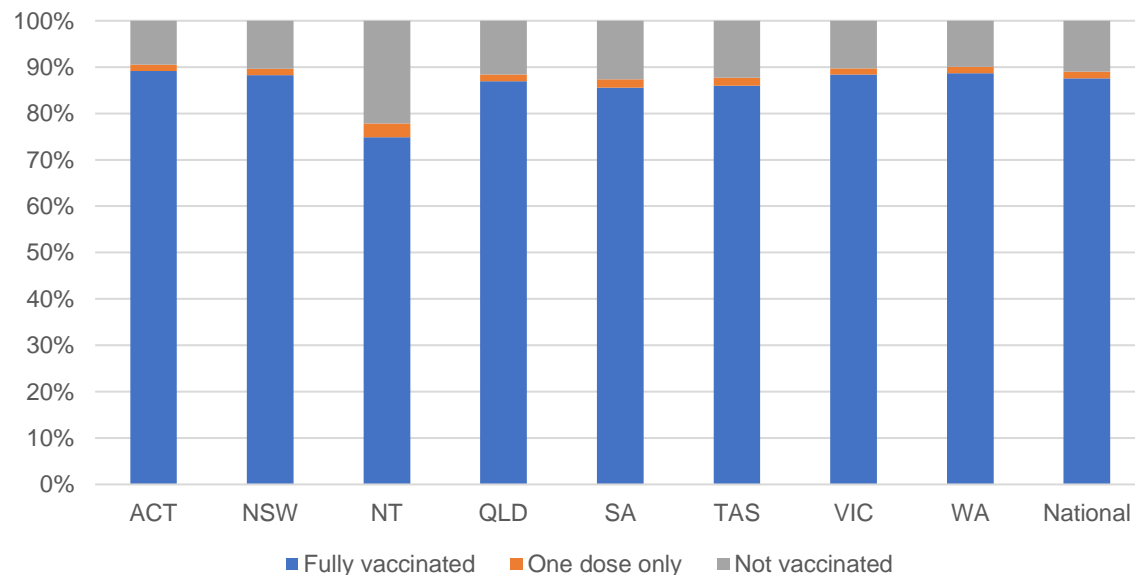
National Disability Insurance Scheme (NDIS) reported vaccinations

Data as at:
02 June 2022
Updated weekly

Australia's COVID-19
Vaccine Roadmap

NATIONAL	Total people with at least one dose	People fully vaccinated	Total number of individuals in cohort	% People with at least one dose	% People fully vaccinated
NDIS participants living in disability accommodation	20,872	20,537	23,469	88.9%	87.5%

NDIS participants in disability and aged care accommodation



Source: Linkage between National Disability Insurance Agency data and the Australian Immunisation Register. Includes participants residing in disability accommodation only.

Source: Total NDIS participant numbers as at 30 May. Participant data as at 31 May. Australian Immunisation Register data as at 01 June. Worker data as at 02 June.

NDIS workforce vaccinations

	NDIS workers with at least one dose	NDIS workers fully vaccinated	% NDIS workers with at least one dose	% NDIS workers fully vaccinated
NSW	126,380	121,370	98.2%	94.4%
VIC	117,785	114,472	98.4%	95.6%
QLD	71,137	70,199	97.7%	96.4%
WA	34,364	32,891	98.7%	94.5%
SA	35,871	33,669	98.6%	92.5%
TAS	10,860	10,618	99.5%	97.3%
ACT	12,303	12,281	99.8%	99.6%
NT	3,929	3,781	99.6%	95.9%
TOTAL	412,629	399,281	98.4%	95.2%

Source: the NDIS Commission has established a requirement for registered NDIS providers who provide intensive disability support services to report on the vaccination status of workers they employ, or otherwise engage, to deliver NDIS-funded supports and services, and who are required to be vaccinated in accordance with in-force state and territory public health orders. The statistics reflect data reported to the NDIS Commission by registered NDIS providers and should be considered indicative and subject to change

Note: Some registered NDIS providers are yet to report on the vaccination status of their workforce. The NDIS Commission is working with those providers around reporting requirements.

Remaining workers not included include those exempt from vaccination requirements, workers whose vaccination status is not yet verified by the provider (such as workers on leave) and provider reporting anomalies.

Residential aged care vaccination rollout

Residential aged care facilities status

176,176 **177,586**

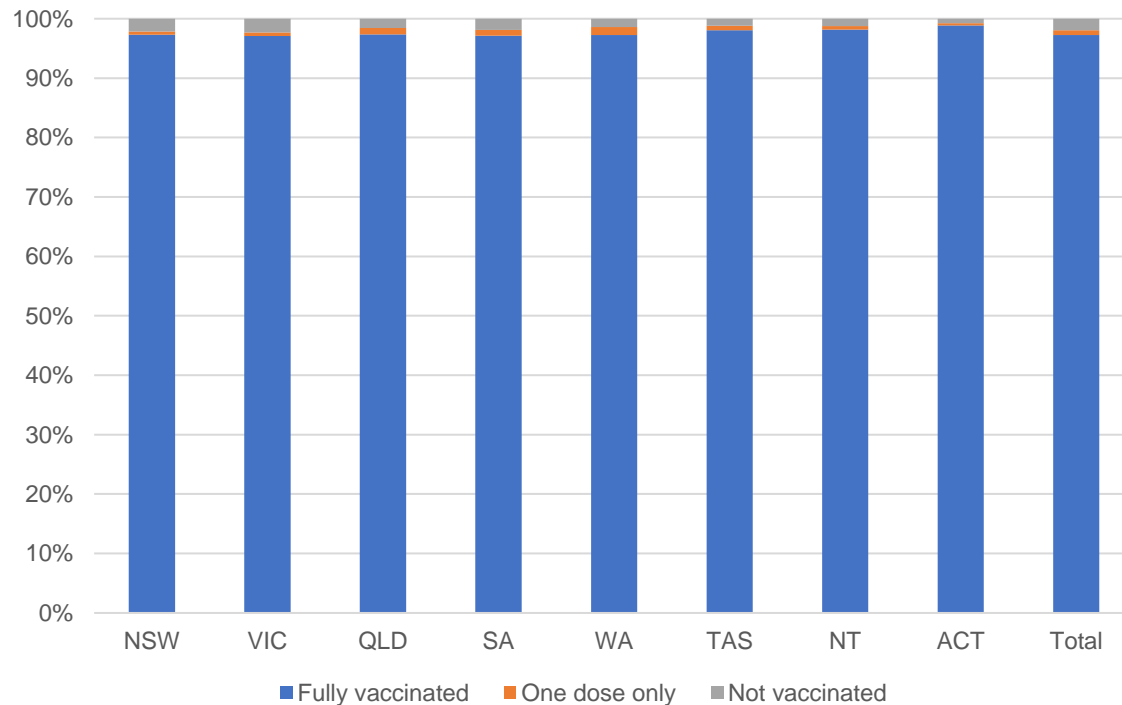
People fully vaccinated

People with at least one dose

Australia's COVID-19 Vaccine Roadmap

Data as at:
02 June 2022
Updated weekly

Aged care resident vaccinations



Aged care worker vaccinations

Jurisdictions	Total workers with at least one dose	Workers fully vaccinated	% Workers with at least one dose	% Workers fully vaccinated
NSW	76,590	76,582	99.8%	99.8%
VIC	70,104	70,102	99.0%	99.0%
QLD	48,107	48,102	99.5%	99.5%
SA	27,301	27,289	99.5%	99.5%
WA	24,534	24,529	100.0%	100.0%
TAS	7,598	7,596	100.0%	100.0%
NT	902	902	100.0%	100.0%
ACT	2,946	2,946	100.0%	100.0%
Total	258,082	258,048	99.5%	99.5%

Source: My Aged Care Portal vaccination progress

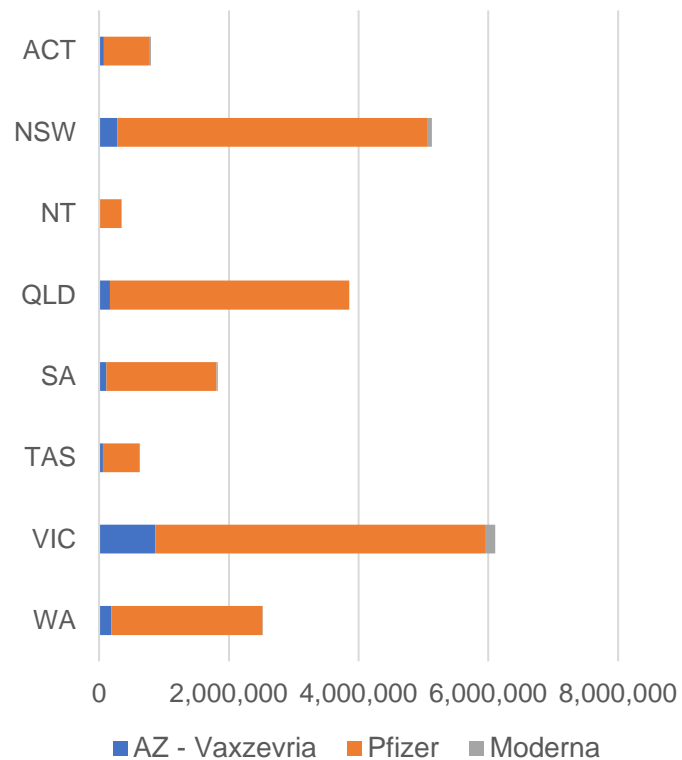
*Status updates are provided by facilities at least once per week. Reporting is updated Monday to Friday to encompass different facility updates being made on different days.

Data is sourced directly from Aged Care Service Providers and is not drawn or closely aligned with data from AIR due to inconsistencies and potential lags in uploading of records.

Data as at:
05 Jun 2022

Jurisdiction administered

Total vaccine doses administered in State and Territory clinics as at 05 June



21,220,077 total vaccine doses administered in State and Territory clinics as at 05 June
 + **1,491** recorded in the last 24 hours
 + **32,250** recorded in the last 7 days

NSW
5,130,398
 (+280 daily increase)

VIC
6,111,105
 (+454 daily increase)

QLD
3,854,672
 (+110 daily increase)

WA
2,521,458
 (+213 daily increase)

TAS
625,900
 (+119 daily increase)

SA
1,832,378
 (+237 daily increase)

ACT
798,343
 (+66 daily increase)

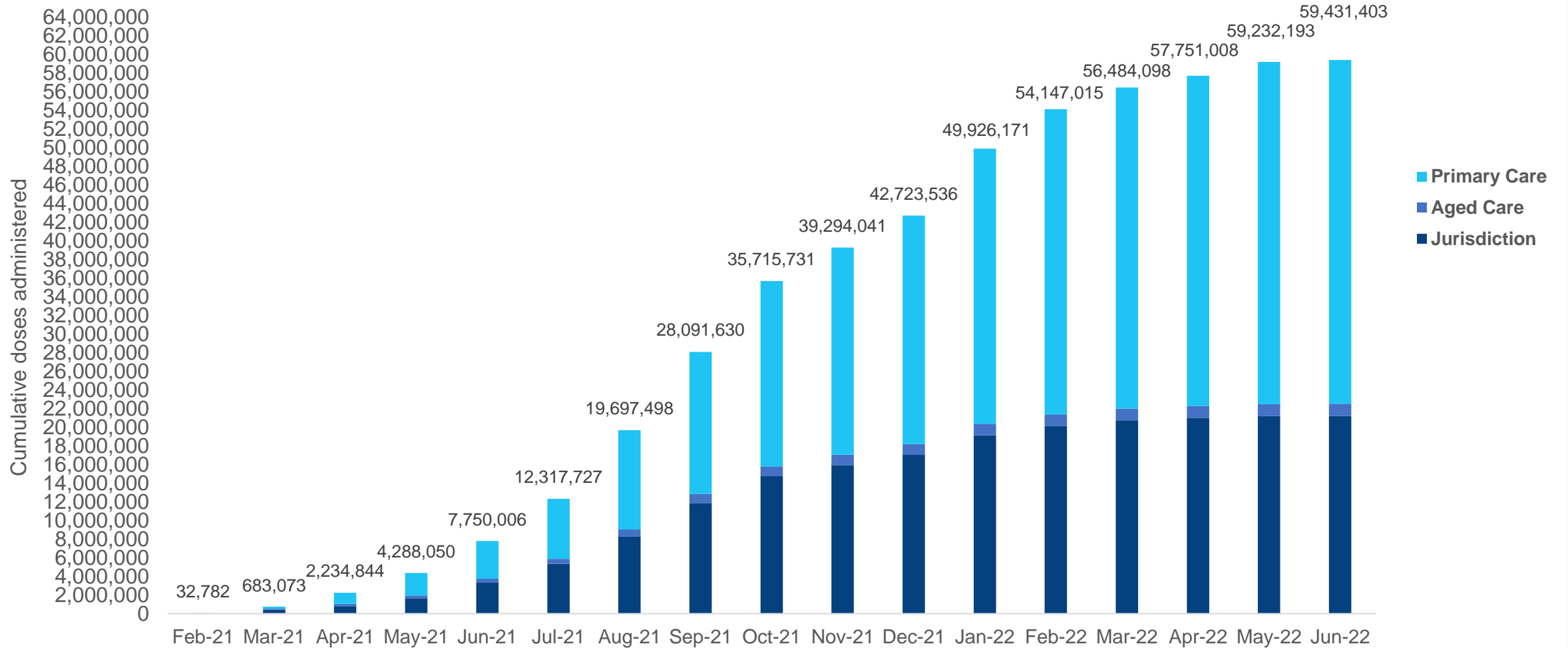
NT
345,823
 (+12 daily increase)

*Sourced from the Australian Immunisation Register. Numbers are calculated as difference in daily cumulative reported numbers to allow for historical corrections.

Source: Australian Immunisation Register

Cumulative doses administered by channel

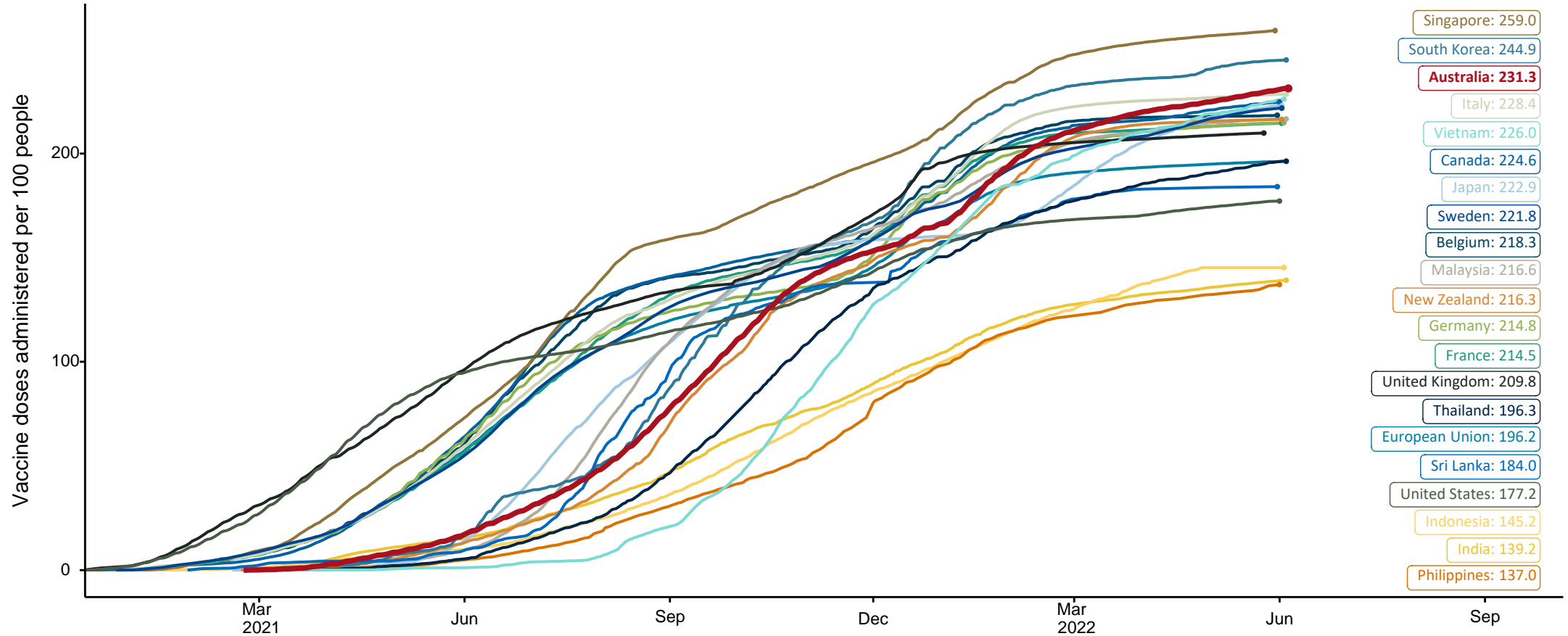
Data as at:
05 Jun 2022



Source: Australian Immunisation Register

COVID-19 vaccine doses per 100, Australia and select countries

Data as at:
05 June 2022
Updated weekly

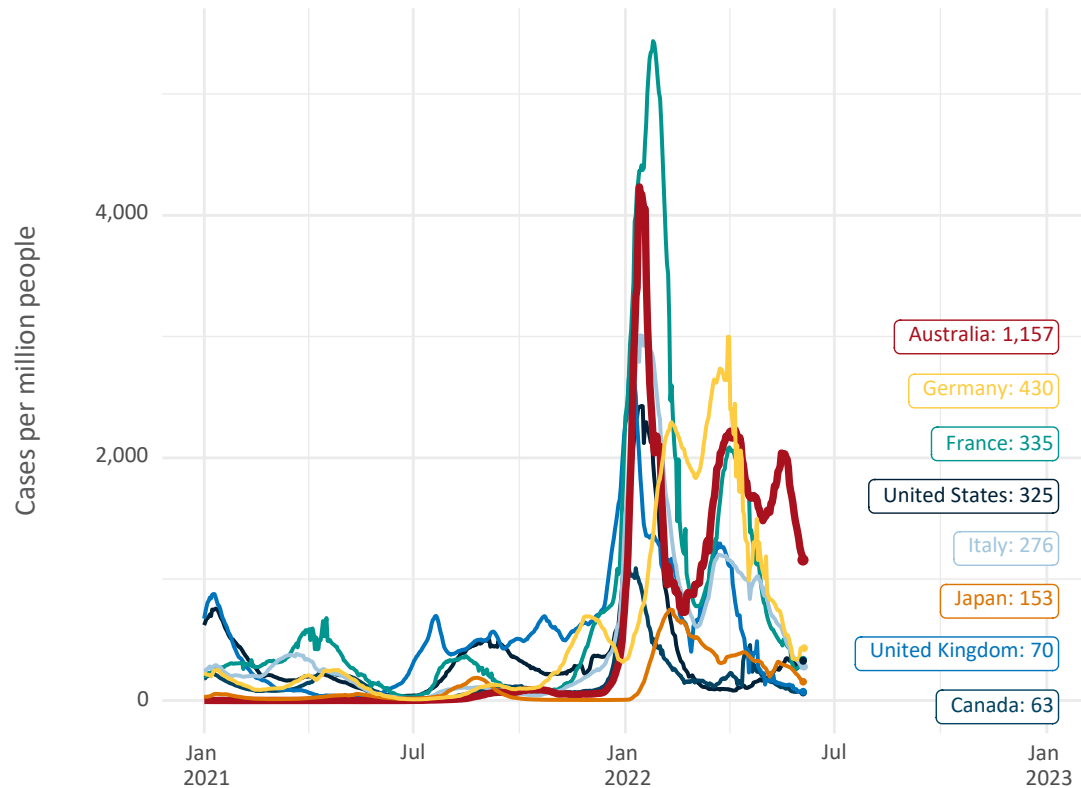


Note: From 11 January 2022, data for Australia includes all doses administered to people 5 and over. Prior to 11 January, data was for 12 and over.
Source: Department of Health (Australia), Our World in Data (international)
Latest data: 05 June

Data as at:
05 June 2022
Updated weekly

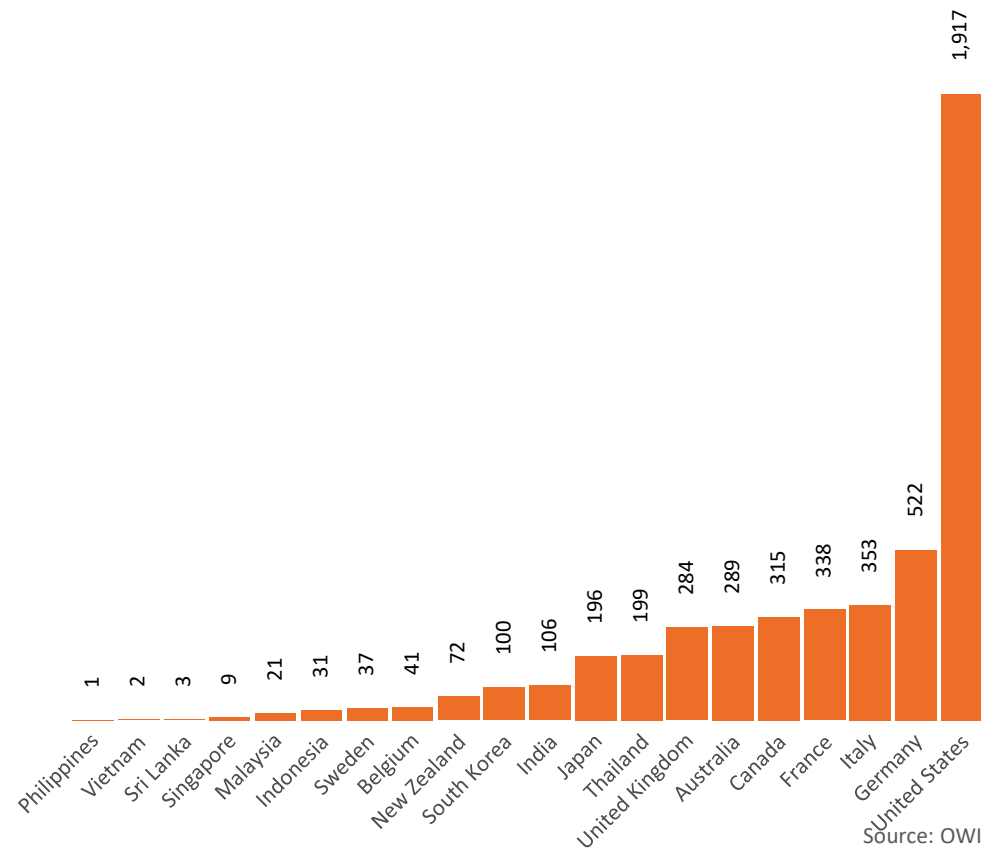
International data – COVID-19

New daily cases per million since 2021, Australia and G7 countries
Smoothed - 7 day average



Source: OWID
Data downloaded: 06 Jun 2022 11:20
Latest data: 05 Jun 2022

COVID-19 deaths in past 7 days - Australia and select countries



Source: OWID
Data downloaded: 06 Jun 2022 11:20
Latest data: 05 Jun 2022

Administration and Utilisation

Doses as at 05 Jun 2022

	Ordered	Available	Administered	Stock on Hand at Sites	Estimated Dose Utilisation %
	Up to 05/06/22	Delivered up to 29/05/22 including redistributions	Up to 05/06/22		(see note)
NSW	6,112,272	6,112,272	5,130,398	370,647	94%
VIC	7,001,854	7,000,654	6,111,105	251,941	97%
QLD	4,847,302	4,805,542	3,854,672	470,465	90%
WA	2,677,858	2,675,058	2,521,458	85,212	Fully utilised
SA	2,151,520	2,122,520	1,832,378	101,865	96%
TAS	656,390	656,390	625,900	1,704	Fully utilised
NT	423,144	412,456	345,823	29,978	94%
ACT	651,486	651,486	798,343	8,128	Fully utilised
Jurisdiction delivered total	24,521,826	24,436,378	21,220,077	1,319,939	97%
Commonwealth Vaccination Providers	1,425,728	1,420,070	1,303,688	7,539	Fully utilised
Commonwealth Primary Care & Other	57,498,816	56,968,554	36,907,638	14,409,703	75%
Total	83,446,370	82,825,002	59,431,403	15,737,181	82%

About this data

- Ordered – Total doses delivered or in transit to sites. Based on logistics provider data. This figure includes doses allocated for administration in the coming week.
- Available – total doses that could have been administered to date, less doses re-distributed from States & Territories to Primary Care or Commonwealth Vaccination Providers (i.e., does not include those deliveries recently received, and intended for use in the coming week).
- Administered – Doses administered as at 05 Jun 2022.
- Stock on Hand at Sites – Available doses minus Administered doses and a small % wastage.
- The dose utilisation is calculated based on the total doses administered and a small % wastage in line with international standards in relation to total available doses.
- For Commonwealth Vaccination Providers, the doses available for administration is for the full period (up to 05 Jun 2022).
- Commonwealth Vaccination Providers utilisation is not provided as the in-reach rollout is demand-based.