



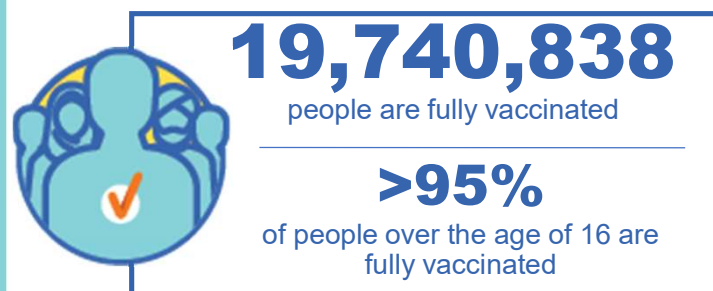
Australian Government
Operation COVID Shield

COVID-19 Vaccine Roll-out

05 June 2022

Data as at:
04 Jun 2022

Total vaccine doses



59,424,700 total vaccine doses administered nationally as at 04 June

+17,823 recorded in the last 24 hours



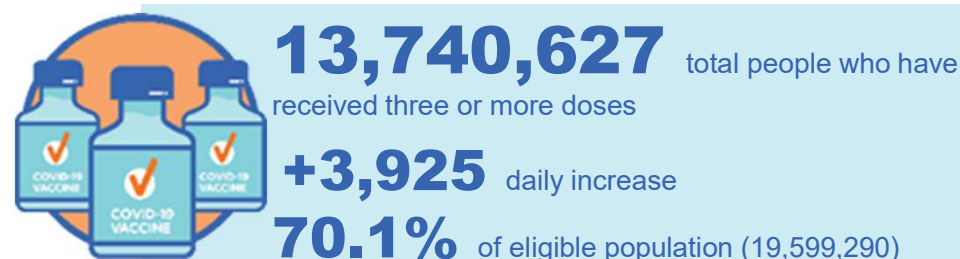
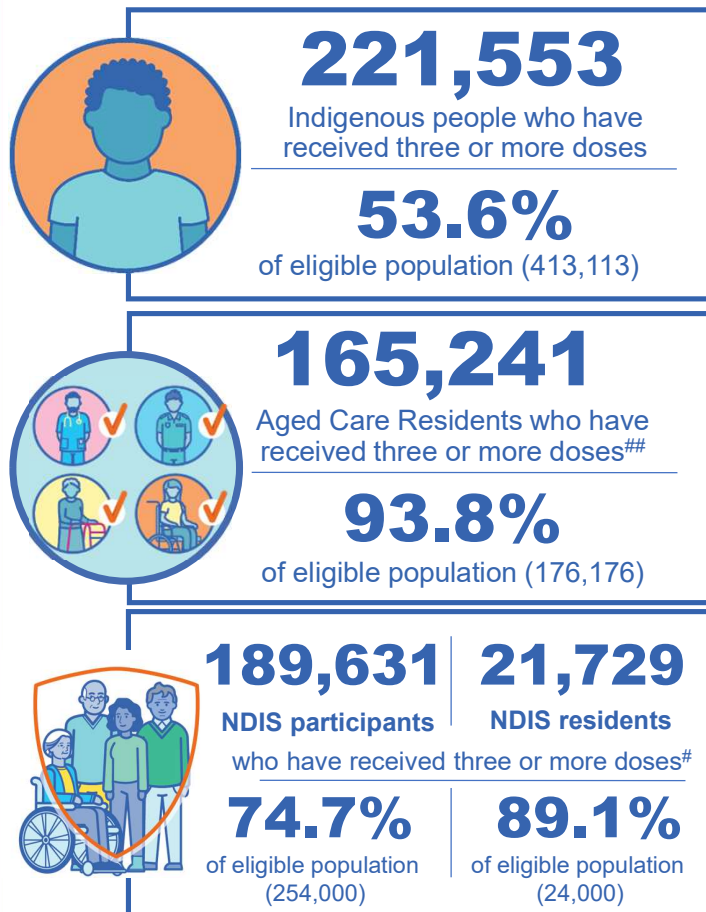
*Administration state breakdown indicates state in which a vaccine was administered

**Overall dose count includes instances of more than three doses per person in a small number of cases.

Source: Australian Immunisation Register

Data as at:
04 Jun 2022

Booster Vaccinations



	Number of People	Daily Increase	% of Eligible
NSW	4,190,760	1,036	67.5%
VIC	3,667,314	1,132	72.4%
QLD	2,378,525	674	63.2%
WA	1,690,406	416	83.2%
SA	979,204	461	73.5%
TAS	314,098	112	72.6%
ACT	271,851	63	78.5%
NT	130,130	45	77.6%

*People may belong to multiple groups and could be represented in the above breakdowns multiple times.
NDIS participants data as at 01 June 2022. ## Aged Care Residents data as at 03 June 2022.

Source: Australian Immunisation Register

118,339 doses administered to persons residing in other territories or with missing residential information

Winter / Fourth Doses

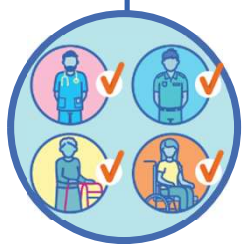
Data as at:
04 Jun 2022

Australia's COVID-19
Vaccine Roadmap



1,703,751 total people (16+) who have received four or more doses

+11,226 daily increase



1,516,640

People aged 65+ who have
received four or more doses

50.7%

of eligible population (2,991,979)

	Number of People 16+	Daily Increase
ACT	35,543	294
NSW	550,793	3,521
NT	7,454	35
QLD	323,265	1,940
SA	136,402	724
TAS	47,745	365
VIC	428,132	2,797
WA	166,228	1,493

8,189 doses administered to persons
residing in other territories or with
missing residential information

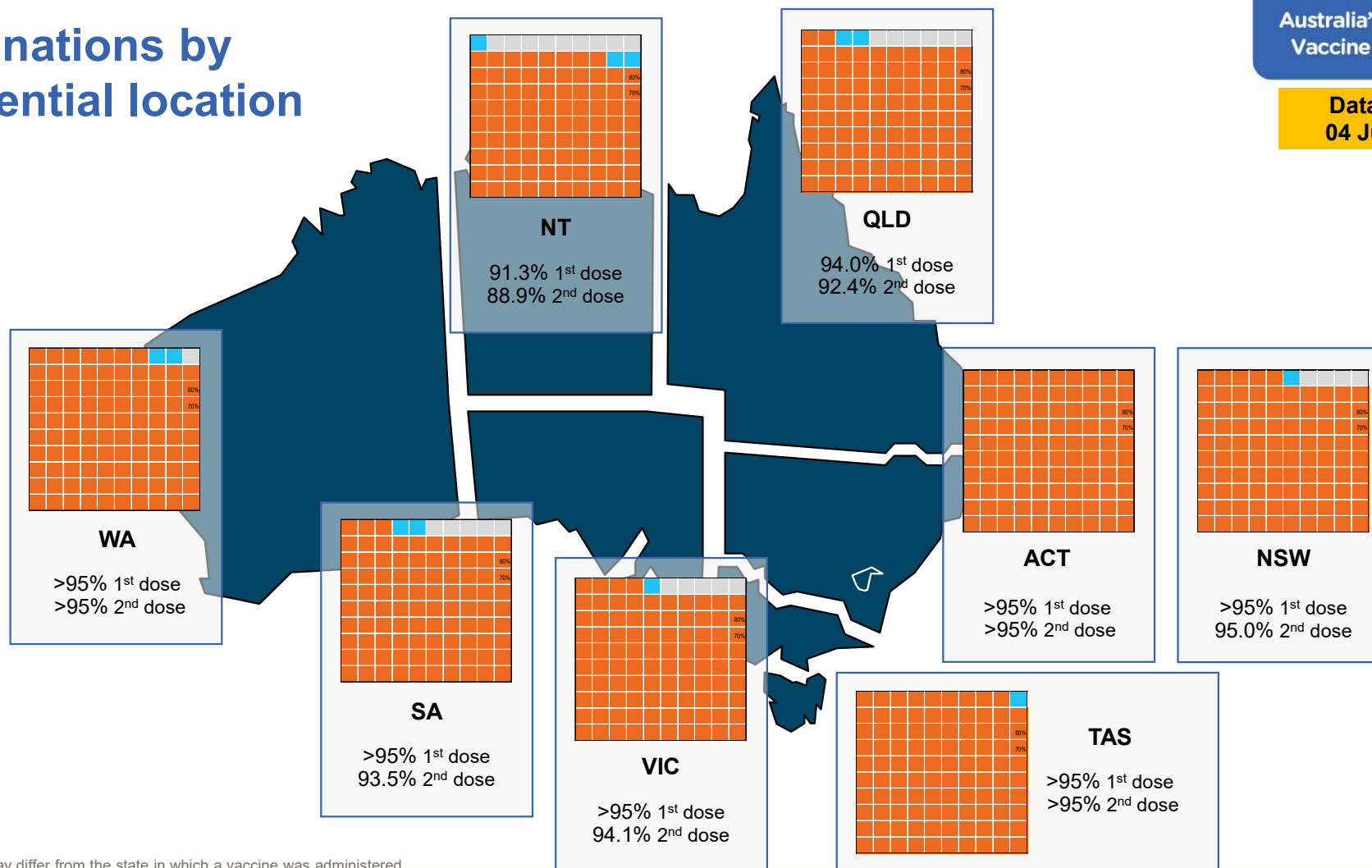
*People become eligible for a winter booster four months after their third dose.

Source: Australian Immunisation Register

Vaccinations by residential location

Australia's COVID-19 Vaccine Roadmap

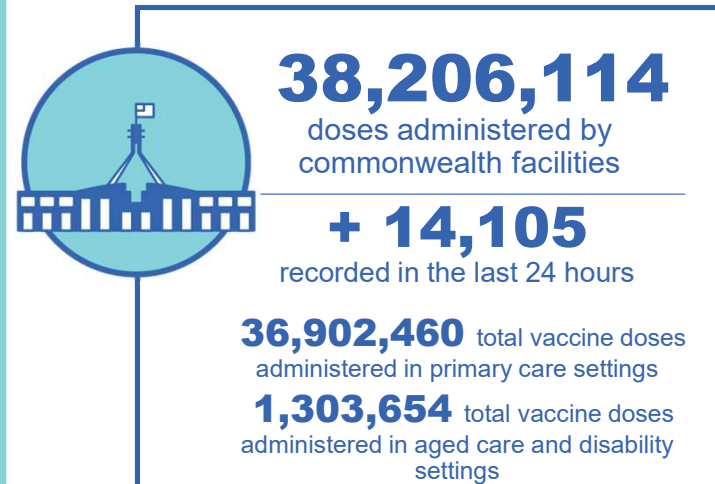
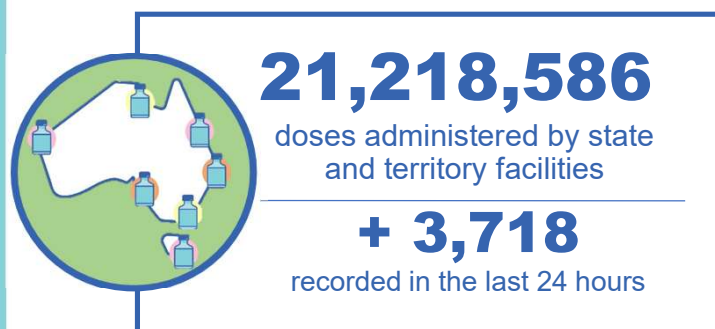
Data as at:
04 Jun 2022



*Residential state may differ from the state in which a vaccine was administered

Commonwealth and Jurisdiction vaccine doses administered

Data as at:
04 Jun 2022



NSW	Jurisdictions	Commonwealth
Cumulative	5,130,118	13,298,106
Daily increase	692	4,649

VIC	Jurisdictions	Commonwealth
Cumulative	6,110,651	9,492,644
Daily increase	1,238	3,488

QLD	Jurisdictions	Commonwealth
Cumulative	3,854,562	7,382,179
Daily increase	381	2,574

WA	Jurisdictions	Commonwealth
Cumulative	2,521,245	4,021,542
Daily increase	440	1,711

TAS	Jurisdictions	Commonwealth
Cumulative	625,781	719,710
Daily increase	249	313

SA	Jurisdictions	Commonwealth
Cumulative	1,832,141	2,290,339
Daily increase	480	915

ACT	Jurisdictions	Commonwealth
Cumulative	798,277	757,572
Daily increase	154	420

NT	Jurisdictions	Commonwealth
Cumulative	345,811	244,022
Daily increase	84	35

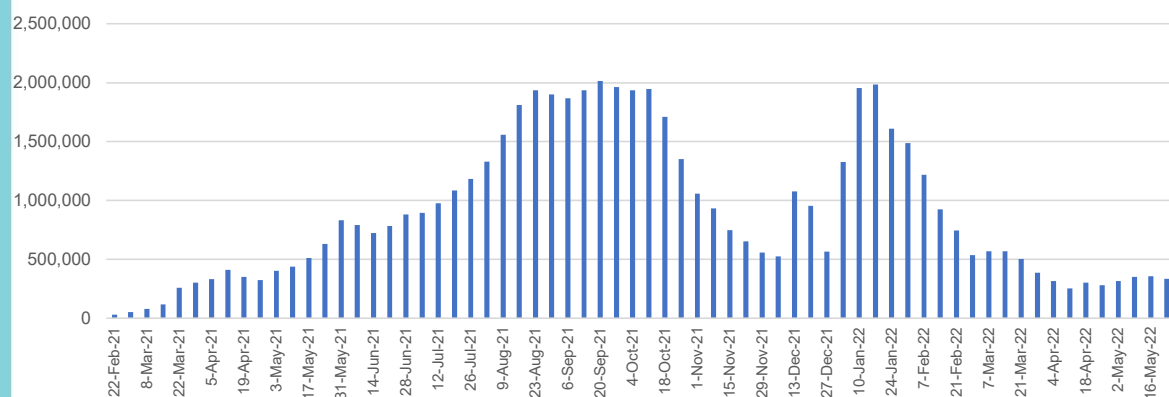
Source: Australian Immunisation Register

Vaccine milestone charts

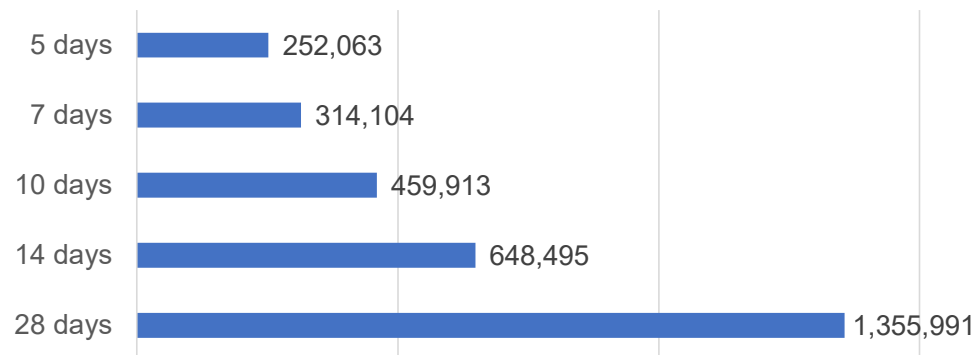
Data as at:
04 Jun 2022

Australia's COVID-19
Vaccine Roadmap

Doses Administered by Week

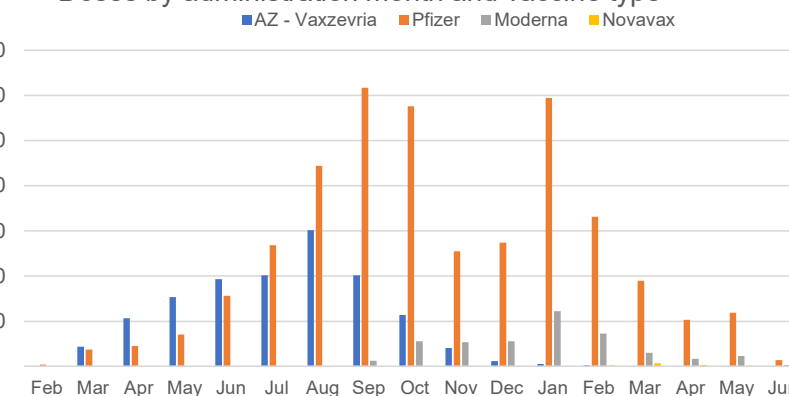


Doses Reported

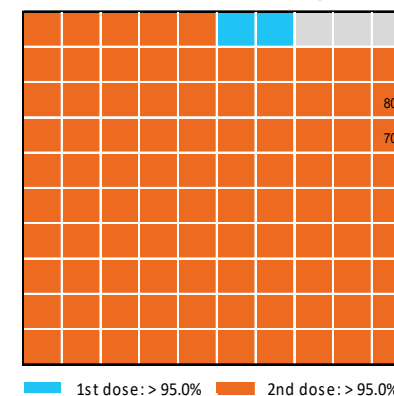


*Sourced from the Australian Immunisation Register.

Doses by administration month and vaccine type



Eligible population percentage coverage



*Each square represents 1% of the national population. Squares are filled as milestones are achieved.

Doses by age and sex

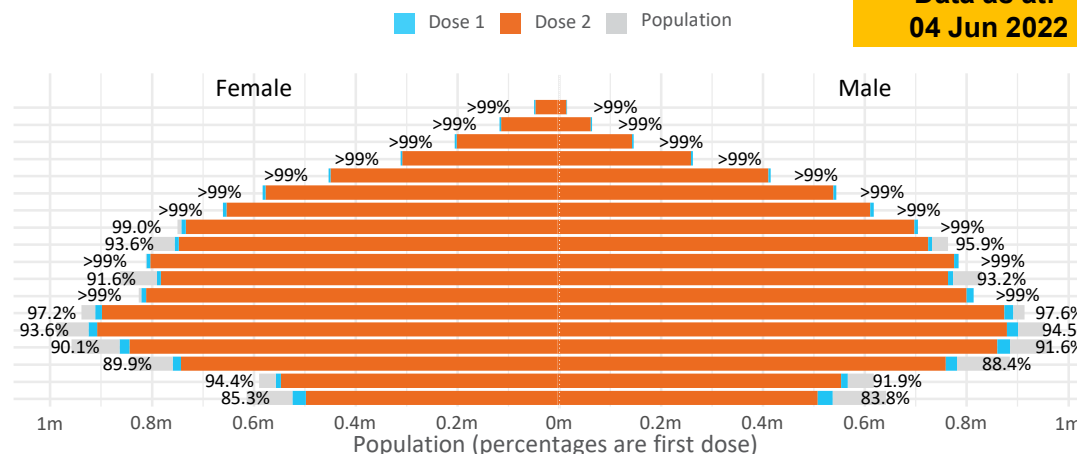
First and second doses by age and sex

	16+	50+	12-15	5-11
Dose 1	97.36% (20,075,309 doses / 20,619,959 people)	>99% (8,901,542 doses / 8,749,703 people)	84.57% (1,052,018 doses / 1,243,990 people)	52.61% (1,197,683 doses / 2,276,638 people)
Dose 2	95.74% (19,740,838 doses / 20,619,959 people)	>99% (8,794,540 doses / 8,749,703 people)	80.10% (996,449 doses / 1,243,990 people)	38.94% (886,562 doses / 2,276,638 people)

Australia's COVID-19
Vaccine Roadmap

Data as at:
04 Jun 2022

Age	Dose 1	Dose 2
95+	64,264 (>99%)	60,848 (>99%)
90-94	180,287 (>99%)	174,744 (>99%)
85-89	348,518 (>99%)	341,654 (>99%)
80-84	569,116 (>99%)	561,919 (>99%)
75-79	860,683 (>99%)	852,306 (>99%)
70-74	1,117,435 (>99%)	1,106,215 (>99%)
65-69	1,268,251 (>99%)	1,253,715 (>99%)
60-64	1,435,300 (>99%)	1,419,040 (98.8%)
55-59	1,475,697 (94.9%)	1,459,077 (93.8%)
50-54	1,581,991 (>99%)	1,565,022 (>99%)
45-49	1,551,203 (92.5%)	1,532,788 (91.4%)
40-44	1,622,608 (>99%)	1,598,602 (98.7%)
35-39	1,791,809 (97.6%)	1,759,705 (95.9%)
30-34	1,817,734 (94.5%)	1,775,978 (92.3%)
25-29	1,743,265 (91.4%)	1,695,742 (88.9%)
20-24	1,532,535 (89.5%)	1,492,750 (87.2%)
16-19	1,114,613 (93.2%)	1,090,733 (91.2%)
12-15	1,052,018 (84.6%)	996,449 (80.1%)



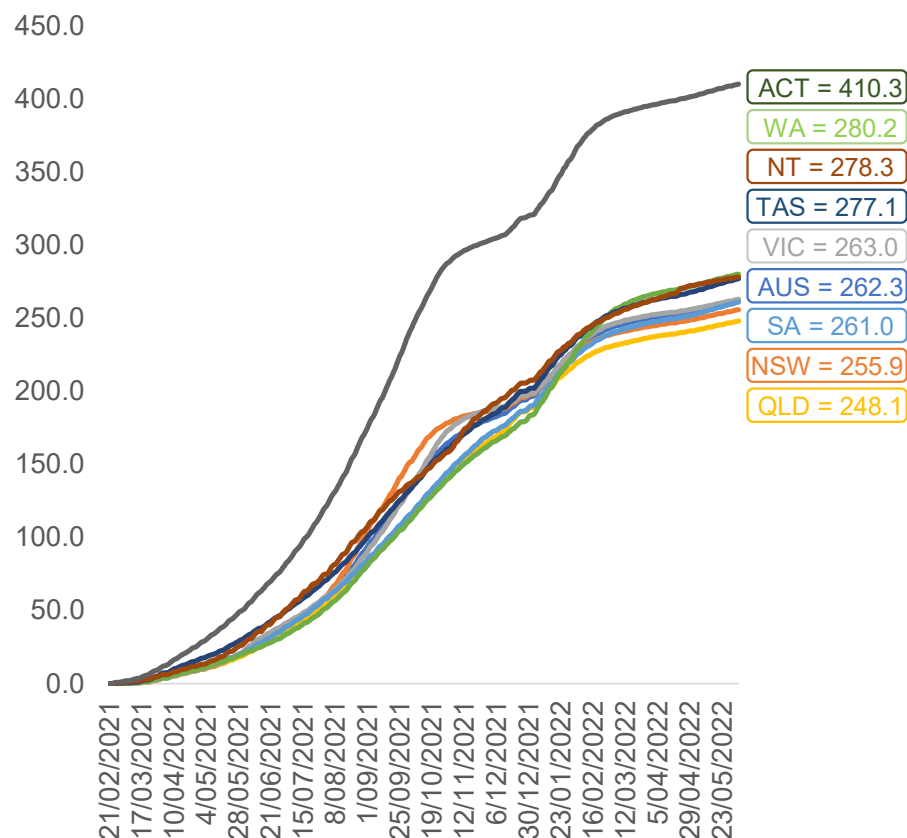
	AUS	ACT	NSW	NT	QLD	SA	TAS	VIC	WA
16 and over - dose 1	20,075,309	352,900	6,332,167	174,040	3,864,601	1,376,343	445,313	5,165,398	2,097,124
16 and over - dose 2	19,740,838	347,222	6,234,981	169,360	3,800,910	1,347,183	436,284	5,087,878	2,065,972
16 and over - population	20,619,959*	344,037	6,565,651	190,571	4,112,707	1,440,400	440,172	5,407,574	2,114,978
16 and over % with dose 1	97.36%	>99%	96.44%	91.33%	93.97%	95.55%	>99%	95.52%	>99%
16 and over % with dose 2	95.74%	>99%	94.96%	88.87%	92.42%	93.53%	>99%	94.09%	97.68%
5 to 11 - dose 1	1,197,683	31,897	357,533	13,213	207,673	83,978	28,573	325,887	141,132
5 to 11 - dose 2	886,562	27,123	270,009	8,614	148,034	62,251	22,930	242,366	100,613
5 to 11 - population	2,276,638	39,789	716,460	24,750	478,731	148,816	45,033	578,499	244,154
5 to 11 % with dose 1	52.61%	80.17%	49.90%	53.39%	43.38%	56.43%	63.45%	56.33%	57.80%
5 to 11 % with dose 2	38.94%	68.17%	37.69%	34.80%	30.92%	41.83%	50.92%	41.90%	41.21%
12 to 15 - dose 1	1,052,018	20,122	323,394	10,817	206,215	68,352	22,921	274,861	115,775
12 to 15 - dose 2	996,449	19,593	309,082	9,745	192,890	64,623	21,804	263,092	107,289
12 to 15 - population	1,243,990	19,693	390,330	13,060	270,146	82,747	26,308	308,611	132,869
12 to 15 % with dose 1	84.57%	>99%	82.85%	82.83%	76.33%	82.60%	87.13%	89.06%	87.13%
12 to 15 % with dose 2	80.10%	>99%	79.18%	74.62%	71.40%	78.10%	82.88%	85.25%	80.75%

*National population will not equal sum of listed jurisdictions due to a small number of people counted in national population residing in some 'other' territories. Sum of state doses will not add to national total as some records are unable to be geocoded to a State or Territory.

Doses sourced from Australian Immunisation Register, population from ABS ERP June 2020

Vaccinations by location

Cumulative total doses administered vs eligible state populations*

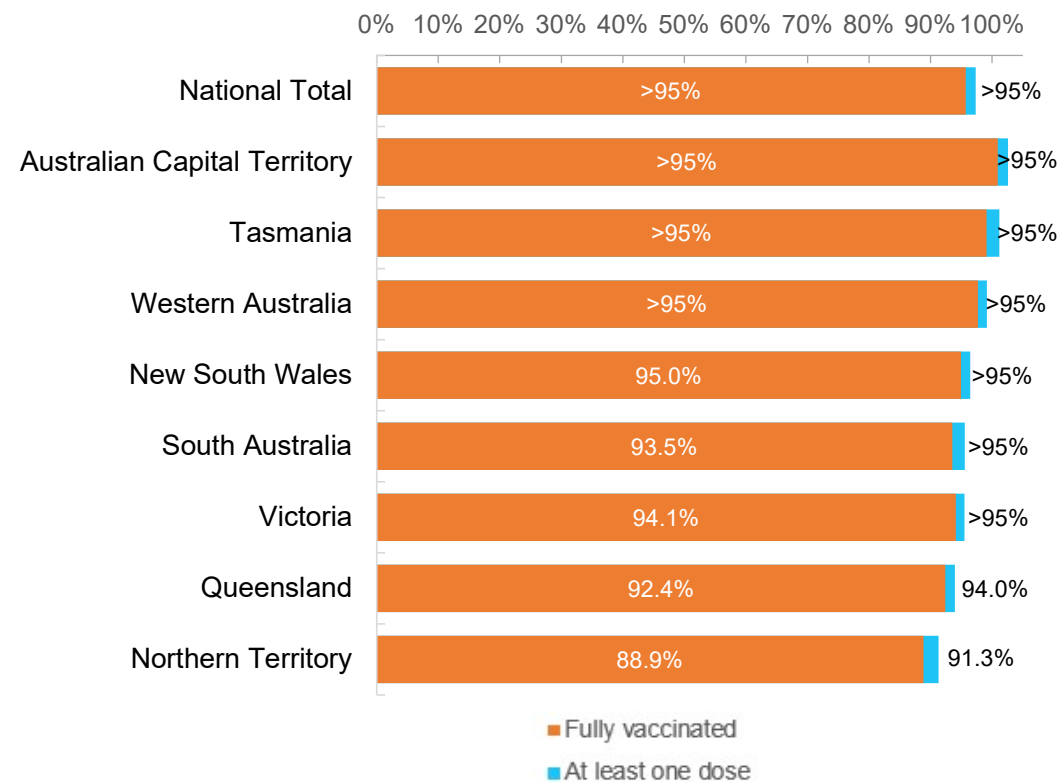


*Not an indication of percentage vaccinated, numbers will exceed 100 due to multiple doses required per person of the population.
All doses are included for those aged 12 and above, and are based on vaccination provider location.

Data as at:
04 Jun 2022

Australia's COVID-19
Vaccine Roadmap

First and Second Doses by residential location

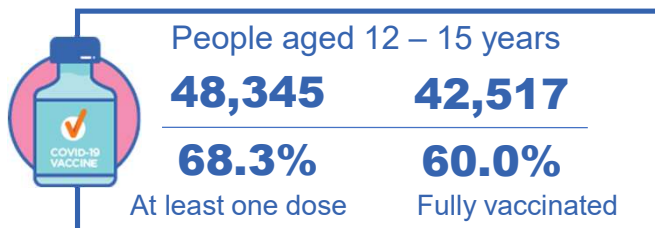
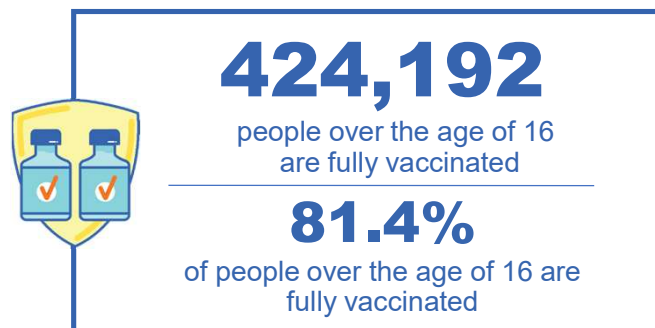


Aboriginal and Torres Strait Islander peoples

Number of people vaccinated

Data as at:
31 May 2022
Updated weekly

Australia's COVID-19
Vaccine Roadmap



178 Aboriginal community controlled health services (ACCHS)

0# 50 27 44 12 3 21 21
ACT NSW NT QLD SA TAS VIC WA

Medicare Address State ^{##}	Individuals Dose 1	Individuals Dose 1 %	Individuals Dose 2	Individuals Dose 2 %
Australian Capital Territory	4,785	91.4%	4,663	89.0%
New South Wales	136,223	87.3%	133,150	85.4%
Northern Territory	41,526	89.6%	39,512	85.3%
Queensland	116,270	81.8%	110,848	78.0%
South Australia	20,049	80.5%	18,653	74.9%
Tasmania	13,961	88.8%	13,553	86.2%
Victoria	35,691	90.4%	34,911	88.5%
Western Australia	53,737	86.7%	49,937	80.6%
Unknown/Other Territories	20,613	69.7%	18,965	64.1%
Totals	442,855	84.9%	424,192	81.4%

Source: Australian Immunisation Register

*Identifying as Aboriginal and Torres Strait Islander is optional and the estimated population may be under reported.

**Includes all Aboriginal and Torres Strait Islander peoples who have received a vaccination, not limited to those administered in an ACCHS setting

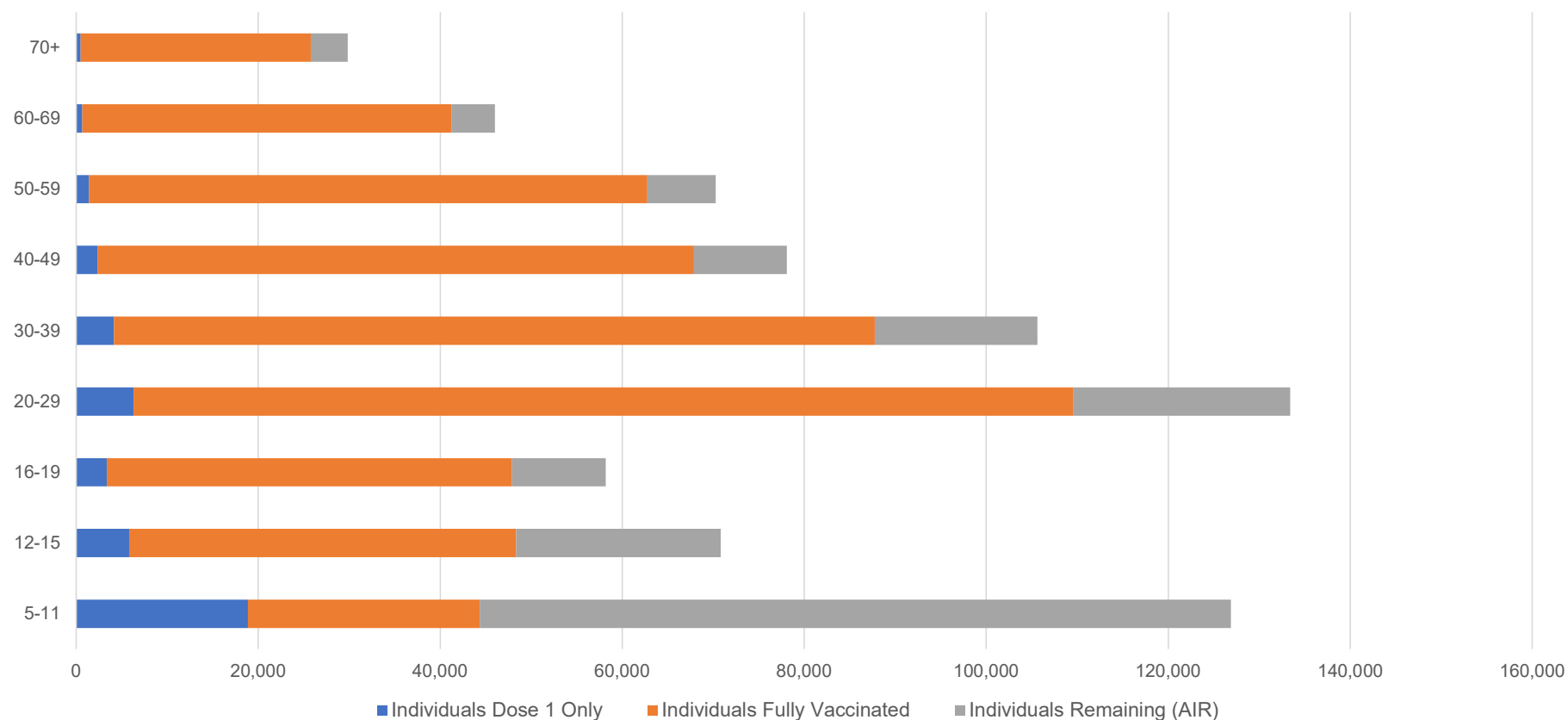
[#]ACCHS in the ACT are currently operating as a Commonwealth Vaccine Clinics so not included to avoid double counting

^{##}The above table includes all identified Aboriginal and Torres Strait Islander people who are aged 16 and above by their state of residence.

Aboriginal and Torres Strait Islander peoples Number of people vaccinated by age

Data as at:
31 May 2022
Updated weekly

Australia's COVID-19
Vaccine Roadmap



Source: Australian Immunisation Register

Commonwealth primary care

Data as at:
04 Jun 2022

Australia's COVID-19
Vaccine Roadmap



Primary care vaccine administration sites

5,714	128	178	3,601
GPs	CVCs	ACCHS	Pharmacies



36,902,460 total vaccine doses administered
primary care settings as at 04 June
+ 13,877 recorded in the last 24 hours

Primary care vaccinations by provider type

	Doses administered	Daily increase	7 day increase
General Practice* includes other Commonwealth	29,562,276	9,500	196,668
Pharmacy	7,340,184	4,377	79,051

NSW
12,730,582
(+4,679 daily increase)

VIC
9,163,024
(+3,352 daily increase)

QLD
7,098,306
(+2,653 daily increase)

WA
3,883,626
(+1,724 daily increase)

TAS
698,441
(+307 daily increase)

SA
2,209,254
(+898 daily increase)

ACT
583,101
(+350 daily increase)

NT
219,146
(+23 daily increase)

316,980

doses administered to persons
residing in other territories or with
missing residential information

*General practice includes Commonwealth Vaccination Clinics, Aboriginal Community Health Centres, Royal Flying Doctor Service and other Commonwealth vaccination facilities

Source: Australian Immunisation Register

Data as at:
04 Jun 2022

Commonwealth aged care and disability doses administered



1,303,654 (+ 228 last 24 hours)

Total vaccine doses administered in aged care and disability facilities as at 04 June

Number of doses administered as part of the Commonwealth aged and disability care rollout

NSW
567,924
(+13 daily increase)

VIC
245,432
(+77 daily increase)

QLD
207,324
(+49 daily increase)

WA
110,206
(+25 daily increase)

TAS
23,583
(<10 daily increase)

SA
85,292
(+73 daily increase)

ACT
17,729
(<10 daily increase)

NT
7,671
(<10 daily increase)

38,493

doses administered to persons
residing in other territories or with
missing residential information

Source: Australian Immunisation Register

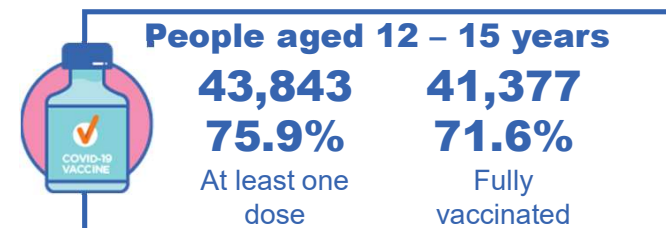
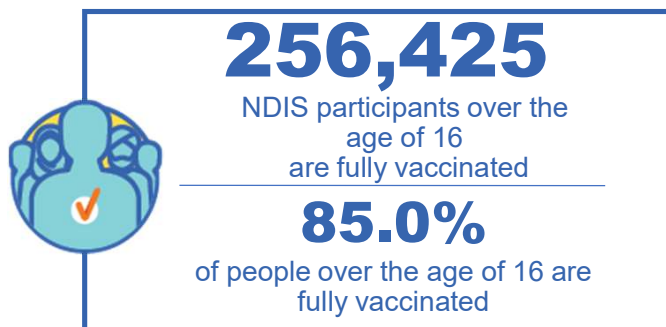
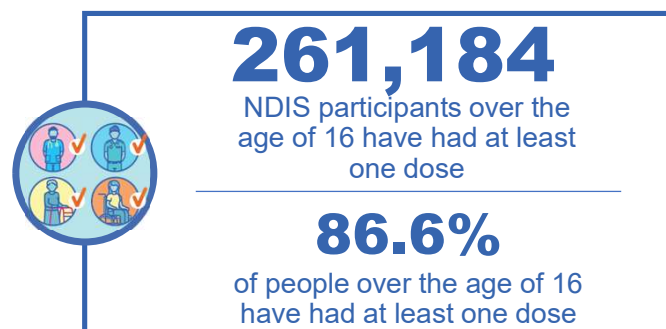
*Sourced from the Australian Immunisation Register. Includes all persons vaccinated at participating residential aged care, disability and related industry settings.

**State level breakdown indicates the residential location and may not align to the state in which the vaccination occurred.

National Disability Insurance Scheme (NDIS) reported vaccinations

Data as at:
02 June 2022
Updated weekly

Australia's COVID-19
Vaccine Roadmap



NDIS participant vaccinations

	People aged 16+ with at least one dose	People aged 16+ fully vaccinated	% People aged 16+ with at least one dose	% People aged 16+ fully vaccinated
ACT	4,929	4,861	88.8%	87.6%
NSW	80,045	78,751	87.2%	85.8%
NT	2,265	2,198	77.6%	75.3%
QLD	51,652	50,676	84.7%	83.1%
SA	21,354	20,846	84.3%	82.3%
TAS	6,539	6,388	87.0%	85.0%
VIC	69,437	68,262	87.8%	86.3%
WA	24,963	24,443	87.9%	86.1%
National	261,184	256,425	86.6%	85.0%

Source: Linkage between National Disability Insurance Agency data and the Australian Immunisation Register. Total NDIS participant numbers as at 30 May. Australian Immunisation Register data as at 01 June. Includes all participants regardless of residence type.

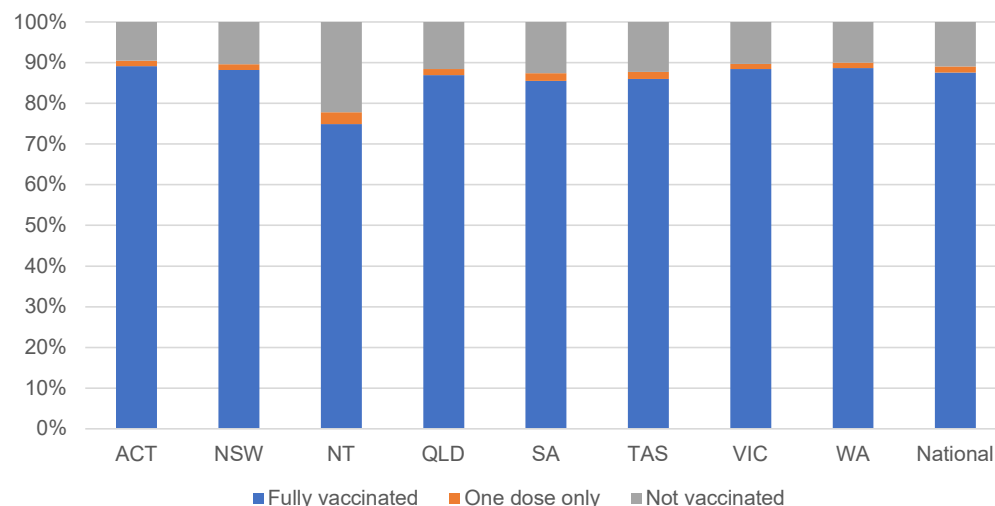
National Disability Insurance Scheme (NDIS) reported vaccinations

Data as at:
02 June 2022
Updated weekly

Australia's COVID-19
Vaccine Roadmap

NATIONAL	Total people with at least one dose	People fully vaccinated	Total number of individuals in cohort	% People with at least one dose	% People fully vaccinated
NDIS participants living in disability accommodation	20,872	20,537	23,469	88.9%	87.5%

NDIS participants in disability and aged care accommodation



Source: Linkage between National Disability Insurance Agency data and the Australian Immunisation Register. Includes participants residing in disability accommodation only.

Source: Total NDIS participant numbers as at 30 May. Participant data as at 31 May. Australian Immunisation Register data as at 01 June. Worker data as at 02 June.

NDIS workforce vaccinations

	NDIS workers with at least one dose	NDIS workers fully vaccinated	% NDIS workers with at least one dose	% NDIS workers fully vaccinated
NSW	126,380	121,370	98.2%	94.4%
VIC	117,785	114,472	98.4%	95.6%
QLD	71,137	70,199	97.7%	96.4%
WA	34,364	32,891	98.7%	94.5%
SA	35,871	33,669	98.6%	92.5%
TAS	10,860	10,618	99.5%	97.3%
ACT	12,303	12,281	99.8%	99.6%
NT	3,929	3,781	99.6%	95.9%
TOTAL	412,629	399,281	98.4%	95.2%

Source: the NDIS Commission has established a requirement for registered NDIS providers who provide intensive disability support services to report on the vaccination status of workers they employ, or otherwise engage, to deliver NDIS-funded supports and services, and who are required to be vaccinated in accordance with in-force state and territory public health orders. The statistics reflect data reported to the NDIS Commission by registered NDIS providers and should be considered indicative and subject to change.

Note: Some registered NDIS providers are yet to report on the vaccination status of their workforce. The NDIS Commission is working with those providers around reporting requirements.

Remaining workers not included include those exempt from vaccination requirements, workers whose vaccination status is not yet verified by the provider (such as workers on leave) and provider reporting anomalies.

Residential aged care vaccination rollout

Residential aged care facilities status

176,176

People fully vaccinated

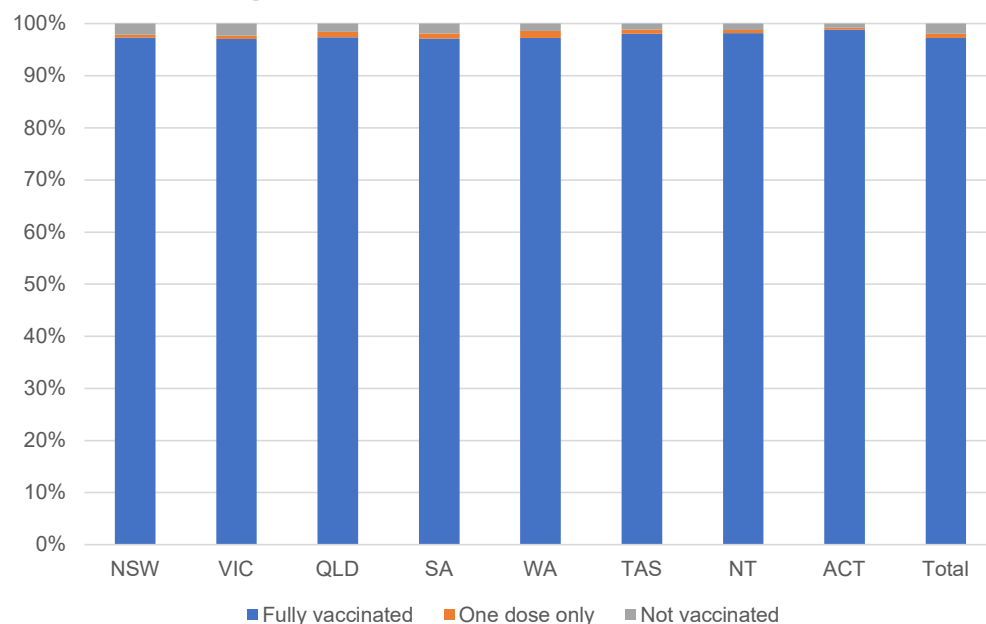
177,586

People with at least one dose

Australia's COVID-19 Vaccine Roadmap

Data as at:
02 June 2022
Updated weekly

Aged care resident vaccinations



Aged care worker vaccinations

Jurisdictions	Total workers with at least one dose	Workers fully vaccinated	% Workers with at least one dose	% Workers fully vaccinated
NSW	76,590	76,582	99.8%	99.8%
VIC	70,104	70,102	99.0%	99.0%
QLD	48,107	48,102	99.5%	99.5%
SA	27,301	27,289	99.5%	99.5%
WA	24,534	24,529	100.0%	100.0%
TAS	7,598	7,596	100.0%	100.0%
NT	902	902	100.0%	100.0%
ACT	2,946	2,946	100.0%	100.0%
Total	258,082	258,048	99.5%	99.5%

Source: My Aged Care Portal vaccination progress

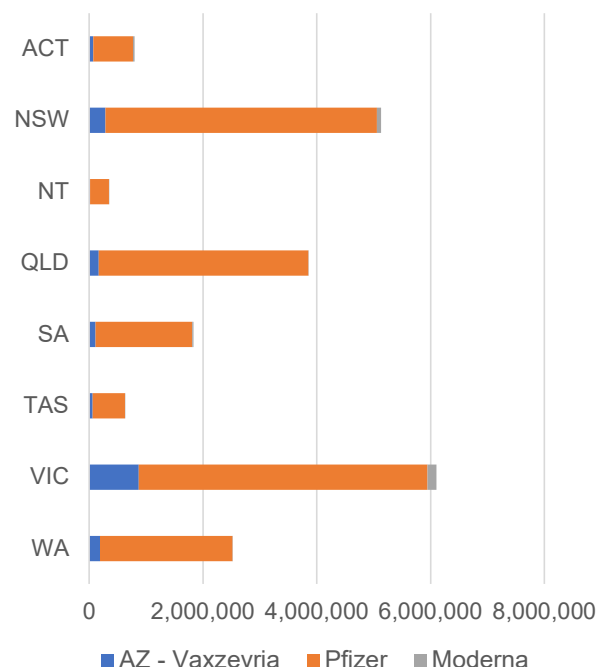
*Status updates are provided by facilities at least once per week. Reporting is updated Monday to Friday to encompass different facility updates being made on different days.

Data is sourced directly from Aged Care Service Providers and is not drawn or closely aligned with data from AIR due to inconsistencies and potential lags in uploading of records.

Data as at:
04 Jun 2022

Jurisdiction administered

Total vaccine doses administered in State and Territory clinics as at 04 June



21,218,586 total vaccine doses administered
in State and Territory clinics as at 04 June
+ **3,718** recorded in the last 24 hours
+ **32,910** recorded in the last 7 days

NSW
5,130,118
(+692 daily increase)

VIC
6,110,651
(+1,238 daily increase)

QLD
3,854,562
(+381 daily increase)

WA
2,521,245
(+440 daily increase)

TAS
625,781
(+249 daily increase)

SA
1,832,141
(+480 daily increase)

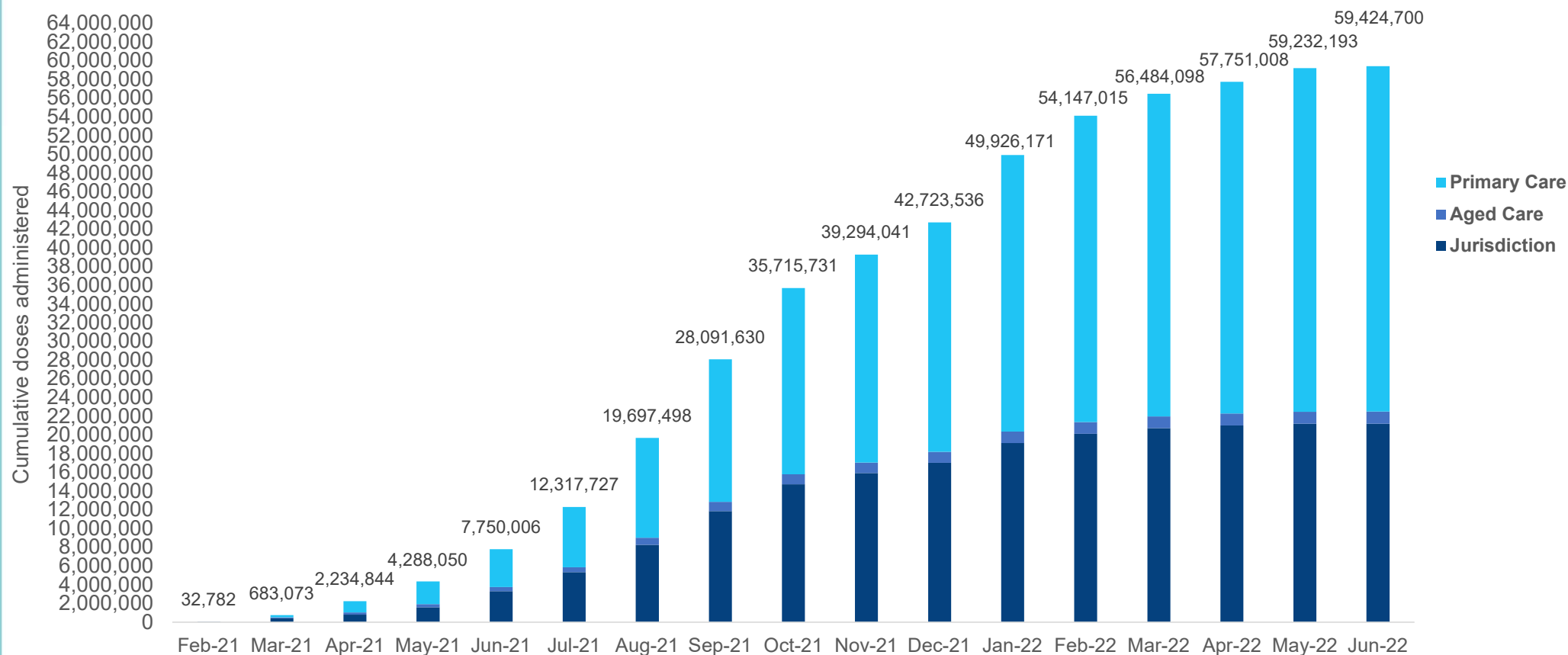
ACT
798,277
(+154 daily increase)

NT
345,811
(+84 daily increase)

*Sourced from the Australian Immunisation Register. Numbers are calculated as difference in daily cumulative reported numbers to allow for historical corrections.

Data as at:
04 Jun 2022

Cumulative doses administered by channel



Source: Australian Immunisation Register

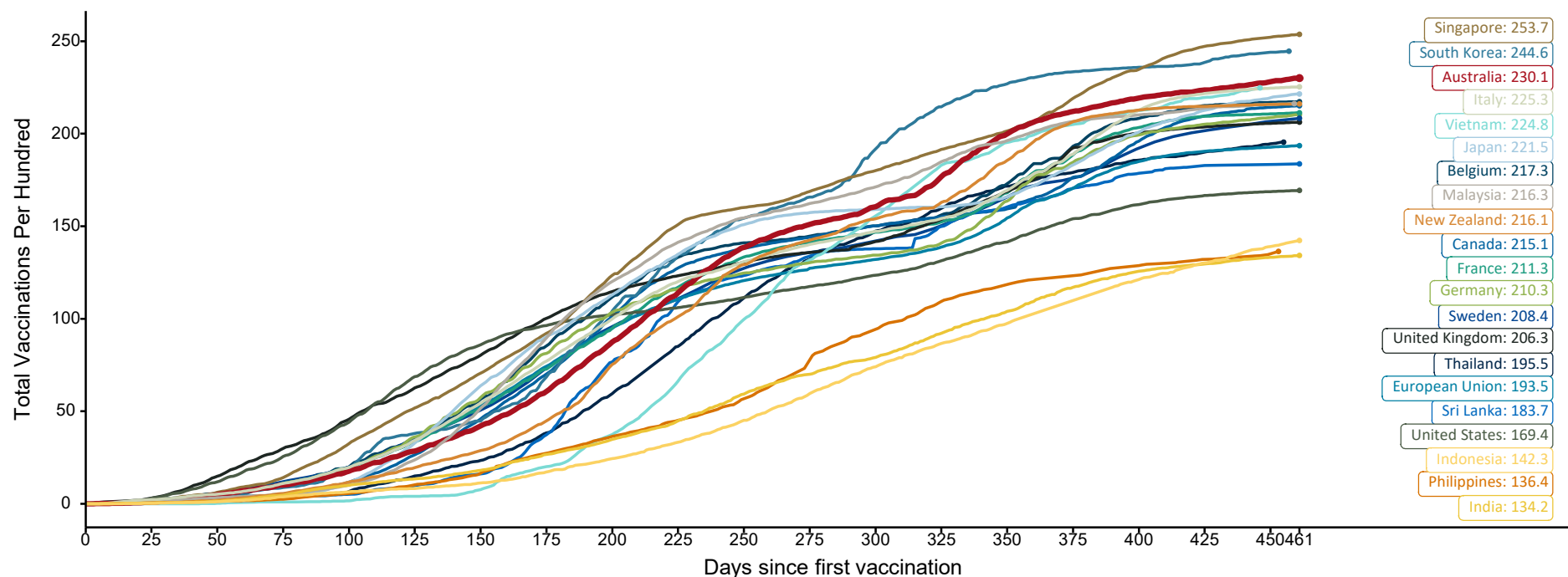
Doses at equivalent stages of rollout (Day 461)

Data as at:
29 May 2022
Updated weekly

Australia's COVID-19
Vaccine Roadmap

The x-axis is truncated at the length of Australia's vaccination program. Countries with intermittent reporting have had their doses per 100 imputed to Australia's current stage of rollout. Israel excluded as it is beyond scale of the graph

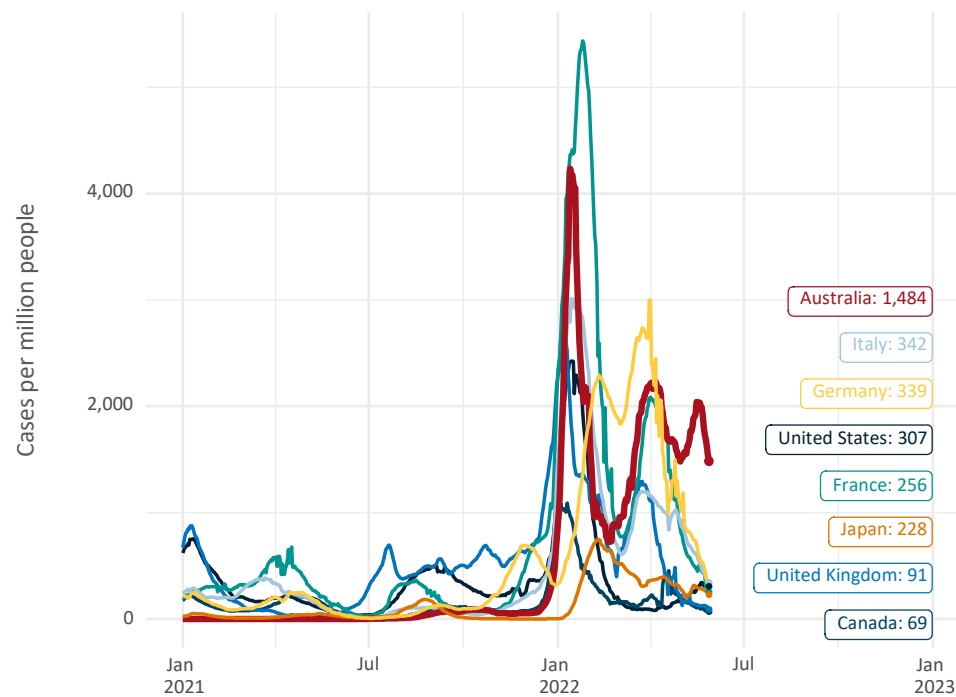
Cumulative doses administered (29 May): **59,119,148**



Note: From 11 January 2022, data for Australia includes all doses administered to people 5 and over. Prior to 11 January, data was for 12 and over.
Source: Department of Health (Australia), Our World in Data (international)
Latest data: 29 May

International data – COVID-19

New daily cases per million since 2021, Australia and G7 countries
Smoothed - 7 day average

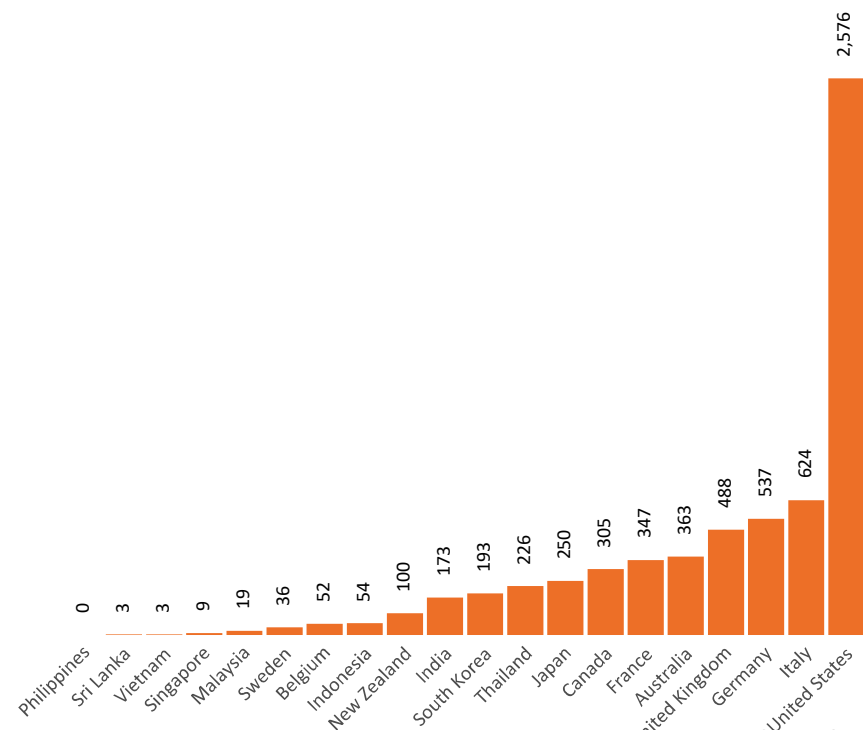


Source: OWID
Data downloaded: 30 May 2022 10:42
Latest data: 28 May 2022

Data as at:
29 May 2022
Updated weekly

Australia's COVID-19
Vaccine Roadmap

COVID-19 deaths in past 7 days - Australia and select countries



Source: OWID
Data downloaded: 30 May 2022 10:42
Latest data: 28 May 2022