



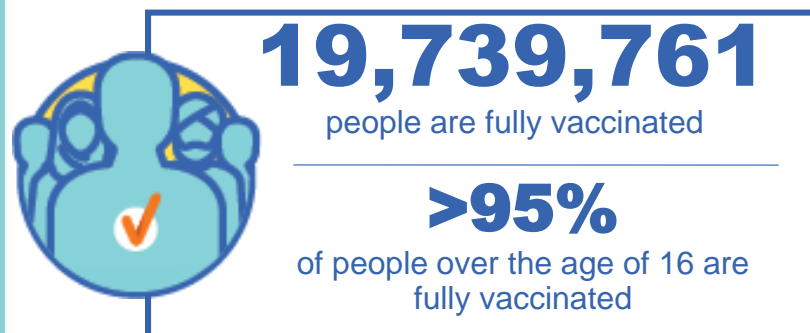
Australian Government
Operation COVID Shield

COVID-19 Vaccine Roll-out

04 June 2022

Data as at:
03 Jun 2022

Total vaccine doses



59,406,877 total vaccine
doses administered nationally as at 03 June

+54,928 recorded in the last 24 hours



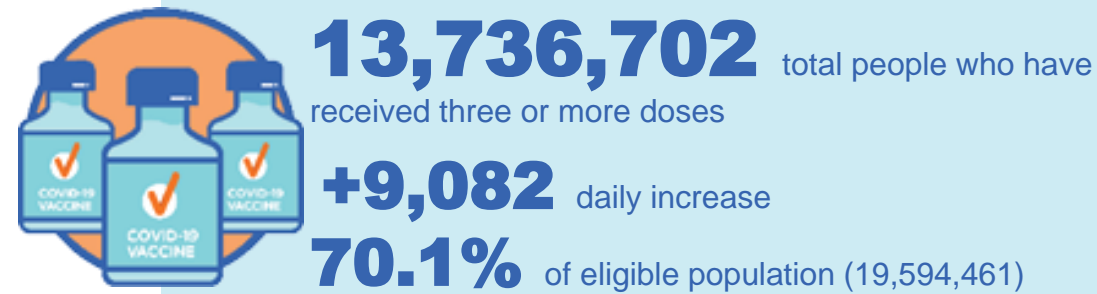
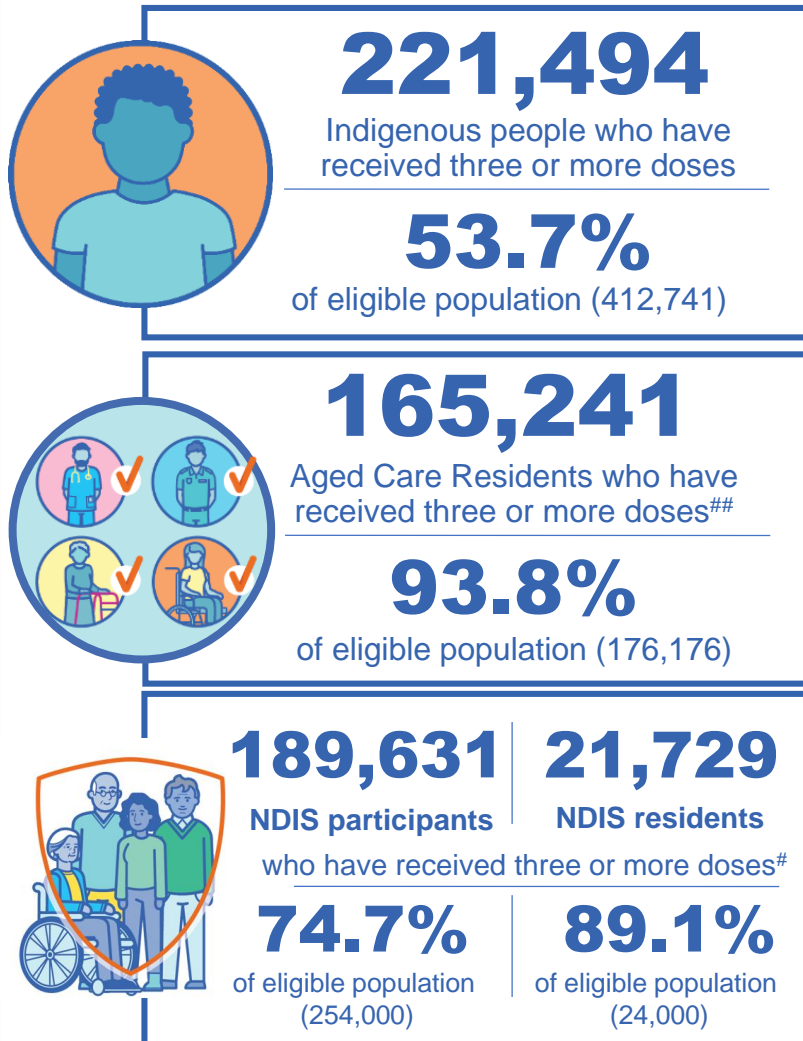
*Administration state breakdown indicates state in which a vaccine was administered

**Overall dose count includes instances of more than three doses per person in a small number of cases.

Source: Australian Immunisation Register

Data as at:
03 Jun 2022

Booster Vaccinations



	Number of People	Daily Increase	% of Eligible
NSW	4,189,724	2,865	67.5%
VIC	3,666,182	2,167	72.4%
QLD	2,377,851	1,739	63.2%
WA	1,689,990	943	83.3%
SA	978,743	836	73.5%
TAS	313,986	185	72.6%
ACT	271,788	121	78.5%
NT	130,085	160	77.6%

*People may belong to multiple groups and could be represented in the above breakdowns multiple times.
NDIS participants data as at 1 June 2022. ## Aged Care Residents data as at 3 June 2022.

Source: Australian Immunisation Register

118,353 doses administered to persons residing in other territories or with missing residential information

Winter / Fourth Doses

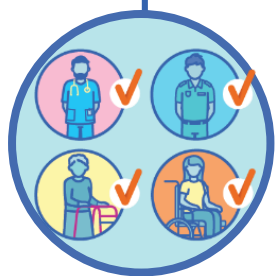
Data as at:
03 Jun 2022

Australia's COVID-19
Vaccine Roadmap



1,692,525 total people (16+) who have received four or more doses

+41,164 daily increase



1,507,386

People aged 65+ who have
received four or more doses

51.2%

of eligible population (2,946,006)

	Number of People 16+	Daily Increase
ACT	35,249	656
NSW	547,272	13,208
NT	7,419	199
QLD	321,325	7,688
SA	135,678	3,152
TAS	47,380	1,245
VIC	425,335	10,395
WA	164,735	4,424

8,132 doses administered to persons
residing in other territories or with
missing residential information

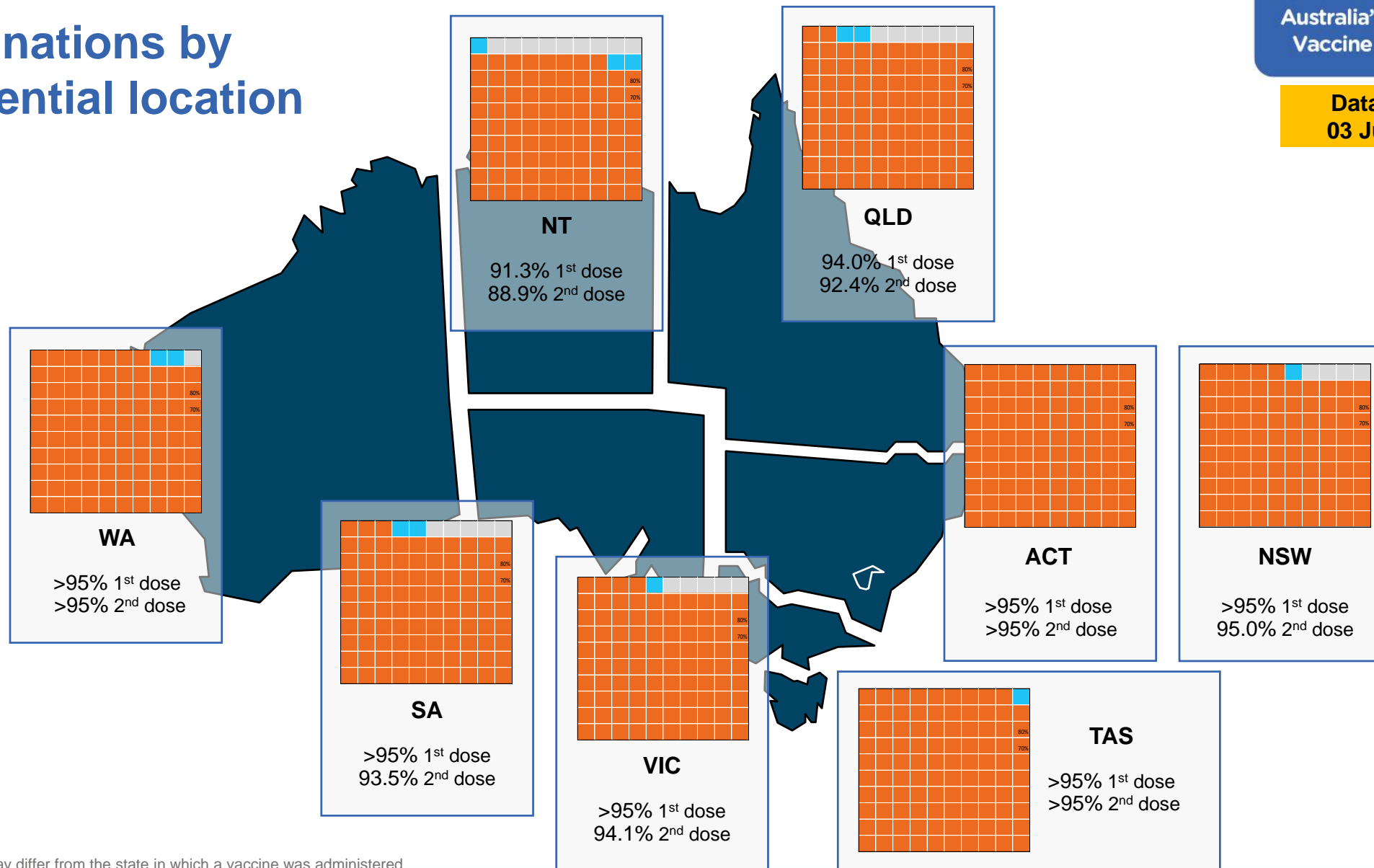
*People become eligible for a winter booster four months after their third dose.

Source: Australian Immunisation Register

Vaccinations by residential location

Australia's COVID-19
Vaccine Roadmap

Data as at:
03 Jun 2022



*Residential state may differ from the state in which a vaccine was administered

Commonwealth and Jurisdiction vaccine doses administered

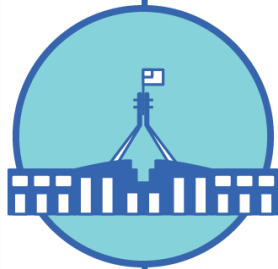
Data as at:
03 Jun 2022



59,406,877 total vaccine
doses administered nationally as at 03 June
+ 54,928 recorded in the last 24 hours



21,214,868
doses administered by state
and territory facilities
+ 5,645
recorded in the last 24 hours



38,192,009
doses administered by
commonwealth facilities
+ 49,283
recorded in the last 24 hours

36,888,583 total vaccine doses
administered in primary care settings
1,303,426 total vaccine doses
administered in aged care and disability
settings

NSW	Jurisdictions	Commonwealth
Cumulative	5,129,426	13,293,457
Daily increase	1,368	16,067

VIC	Jurisdictions	Commonwealth
Cumulative	6,109,413	9,489,156
Daily increase	1,509	12,219

QLD	Jurisdictions	Commonwealth
Cumulative	3,854,181	7,379,605
Daily increase	550	9,806

WA	Jurisdictions	Commonwealth
Cumulative	2,520,805	4,019,831
Daily increase	831	4,998

TAS	Jurisdictions	Commonwealth
Cumulative	625,532	719,397
Daily increase	93	1,393

SA	Jurisdictions	Commonwealth
Cumulative	1,831,661	2,289,424
Daily increase	733	3,582

ACT	Jurisdictions	Commonwealth
Cumulative	798,123	757,152
Daily increase	427	884

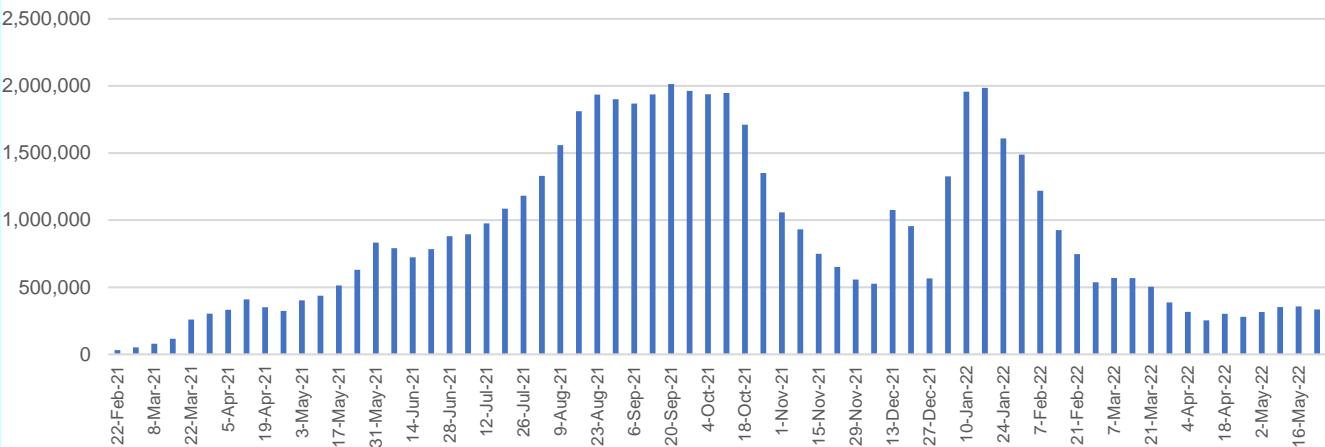
NT	Jurisdictions	Commonwealth
Cumulative	345,727	243,987
Daily increase	134	334

Vaccine milestone charts

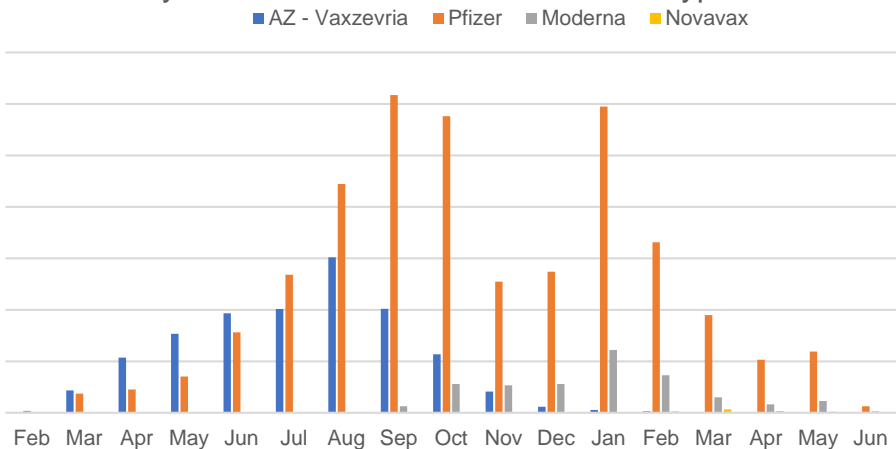
Data as at:
03 Jun 2022

Australia's COVID-19
Vaccine Roadmap

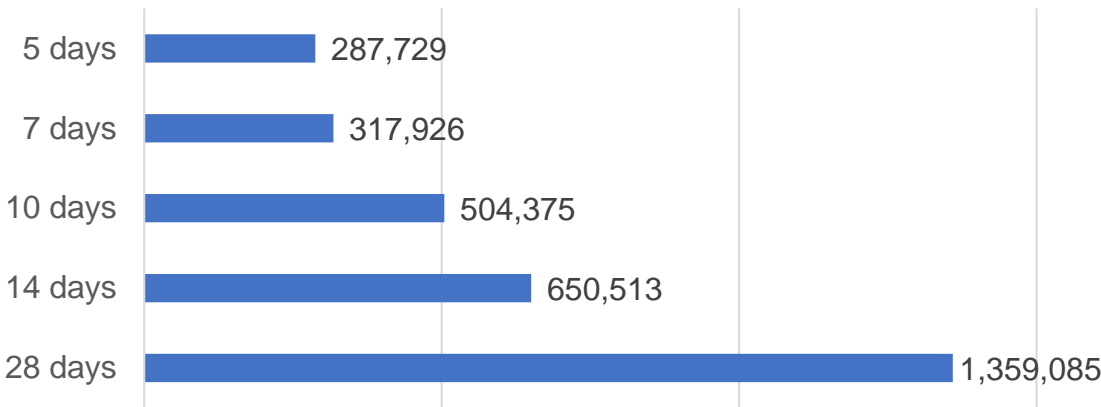
Doses Administered by Week



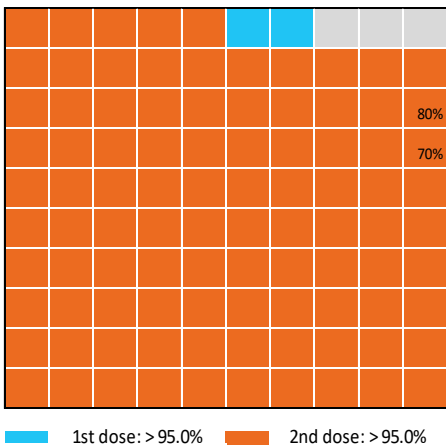
Doses by administration month and vaccine type



Doses Reported



Eligible population percentage coverage



*Each square represents 1% of the national population.
Squares are filled as milestones are achieved.

*Sourced from the Australian Immunisation Register.

Doses by age and sex

First and second doses by age and sex

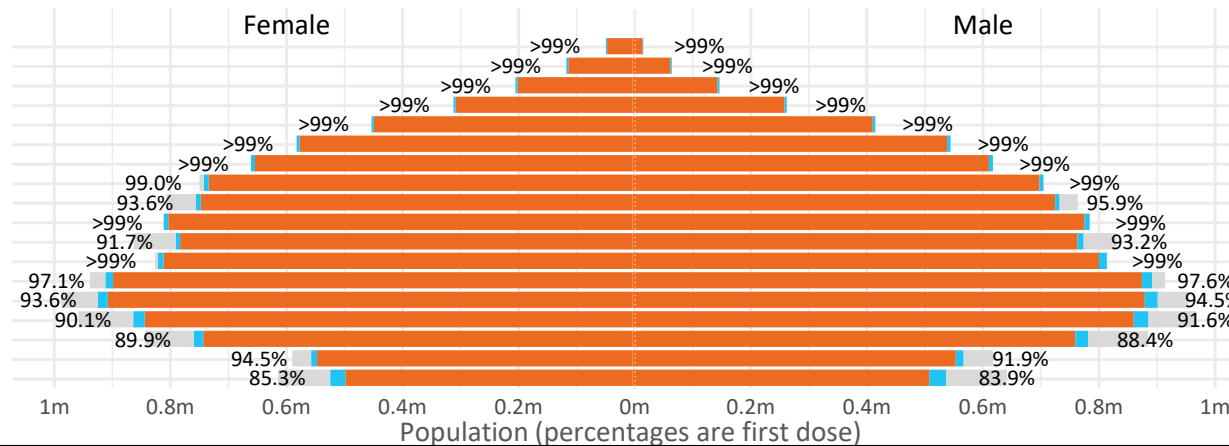
Australia's COVID-19
Vaccine Roadmap

Data as at:
03 Jun 2022

Age	Dose 1	Dose 2
95+	64,203 (>99%)	60,790 (>99%)
90-94	180,204 (>99%)	174,663 (>99%)
85-89	348,390 (>99%)	341,524 (>99%)
80-84	569,000 (>99%)	561,799 (>99%)
75-79	860,433 (>99%)	852,056 (>99%)
70-74	1,117,408 (>99%)	1,106,184 (>99%)
65-69	1,268,132 (>99%)	1,253,609 (>99%)
60-64	1,435,173 (>99%)	1,418,925 (98.8%)
55-59	1,475,719 (94.9%)	1,459,104 (93.8%)
50-54	1,581,840 (>99%)	1,564,878 (>99%)
45-49	1,551,451 (92.5%)	1,533,032 (91.4%)
40-44	1,622,403 (>99%)	1,598,399 (98.7%)
35-39	1,791,561 (97.6%)	1,759,470 (95.9%)
30-34	1,817,722 (94.5%)	1,775,959 (92.3%)
25-29	1,743,328 (91.4%)	1,695,807 (88.9%)
20-24	1,532,578 (89.5%)	1,492,790 (87.2%)
16-19	1,114,676 (93.2%)	1,090,772 (91.2%)
12-15	1,052,349 (84.6%)	996,760 (80.1%)

	16+	50+	12-15	5-11
Dose 1	97.35% (20,074,221 doses / 20,619,959 people)	>99% (8,900,502 doses / 8,749,703 people)	84.59% (1,052,349 doses / 1,243,990 people)	52.61% (1,197,726 doses / 2,276,638 people)
Dose 2	95.73% (19,739,761 doses / 20,619,959 people)	>99% (8,793,532 doses / 8,749,703 people)	80.13% (996,760 doses / 1,243,990 people)	38.89% (885,489 doses / 2,276,638 people)

Dose 1 Dose 2 Population

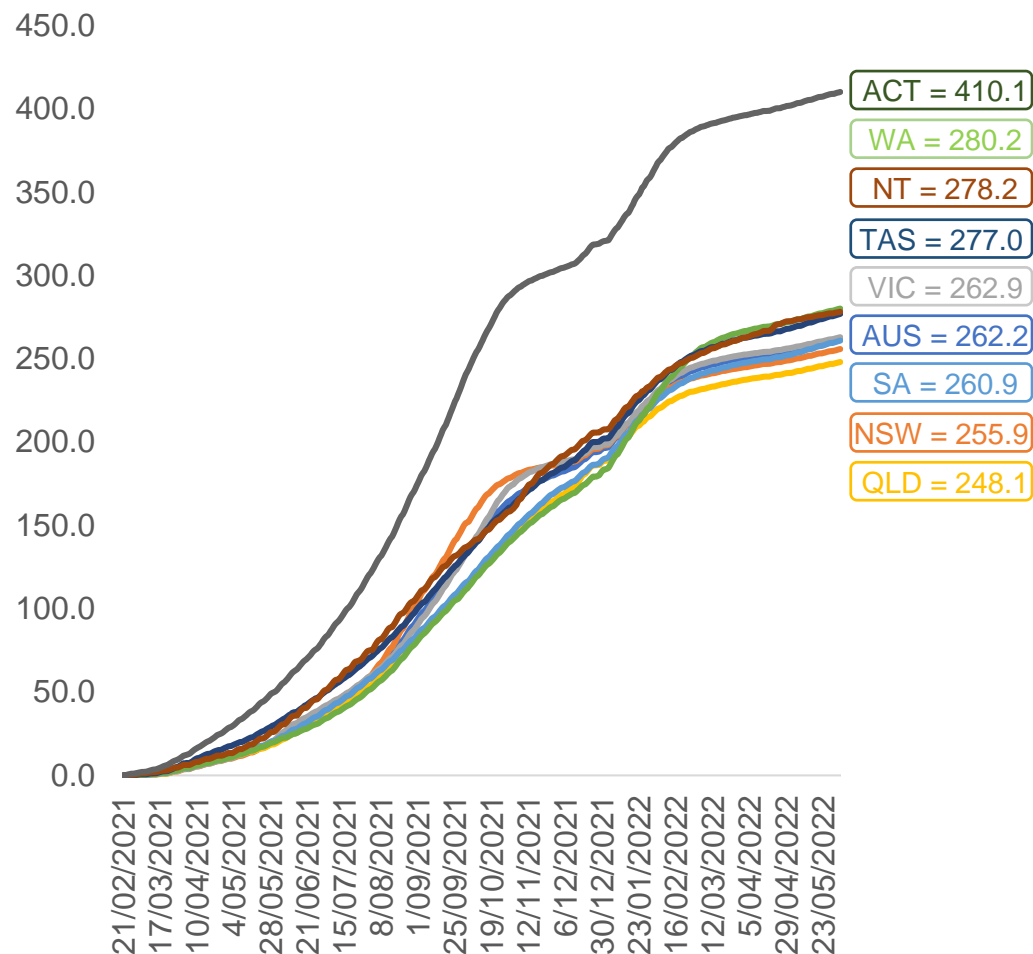


	AUS	ACT	NSW	NT	QLD	SA	TAS	VIC	WA
16 and over - dose 1	20,074,221	352,894	6,331,804	174,040	3,864,306	1,376,252	445,295	5,165,076	2,097,000
16 and over - dose 2	19,739,761	347,215	6,234,631	169,362	3,800,602	1,347,087	436,265	5,087,581	2,065,843
16 and over - population	20,619,959*	344,037	6,565,651	190,571	4,112,707	1,440,400	440,172	5,407,574	2,114,978
16 and over % with dose 1	97.35%	>99%	96.44%	91.33%	93.96%	95.55%	>99%	95.52%	>99%
16 and over % with dose 2	95.73%	>99%	94.96%	88.87%	92.41%	93.52%	>99%	94.08%	97.68%
5 to 11 - dose 1	1,197,726	31,898	357,554	13,216	207,707	83,961	28,561	325,889	141,134
5 to 11 - dose 2	885,489	27,109	269,694	8,598	147,907	62,141	22,896	242,037	100,483
5 to 11 - population	2,276,638	39,789	716,460	24,750	478,731	148,816	45,033	578,499	244,154
5 to 11 % with dose 1	52.61%	80.17%	49.91%	53.40%	43.39%	56.42%	63.42%	56.33%	57.81%
5 to 11 % with dose 2	38.89%	68.13%	37.64%	34.74%	30.90%	41.76%	50.84%	41.84%	41.16%
12 to 15 - dose 1	1,052,349	20,125	323,498	10,818	206,276	68,365	22,923	274,966	115,801
12 to 15 - dose 2	996,760	19,596	309,169	9,748	192,963	64,642	21,805	263,174	107,316
12 to 15 - population	1,243,990	19,693	390,330	13,060	270,146	82,747	26,308	308,611	132,869
12 to 15 % with dose 1	84.59%	>99%	82.88%	82.83%	76.36%	82.62%	87.13%	89.10%	87.15%
12 to 15 % with dose 2	80.13%	>99%	79.21%	74.64%	71.43%	78.12%	82.88%	85.28%	80.77%

*National population will not equal sum of listed jurisdictions due to a small number of people counted in national population residing in some 'other' territories. Sum of state doses will not add to national total as some records are unable to be geocoded to a State or Territory.
Doses sourced from Australian Immunisation Register, population from ABS ERP June 2020

Vaccinations by location

Cumulative total doses administered vs eligible state populations*

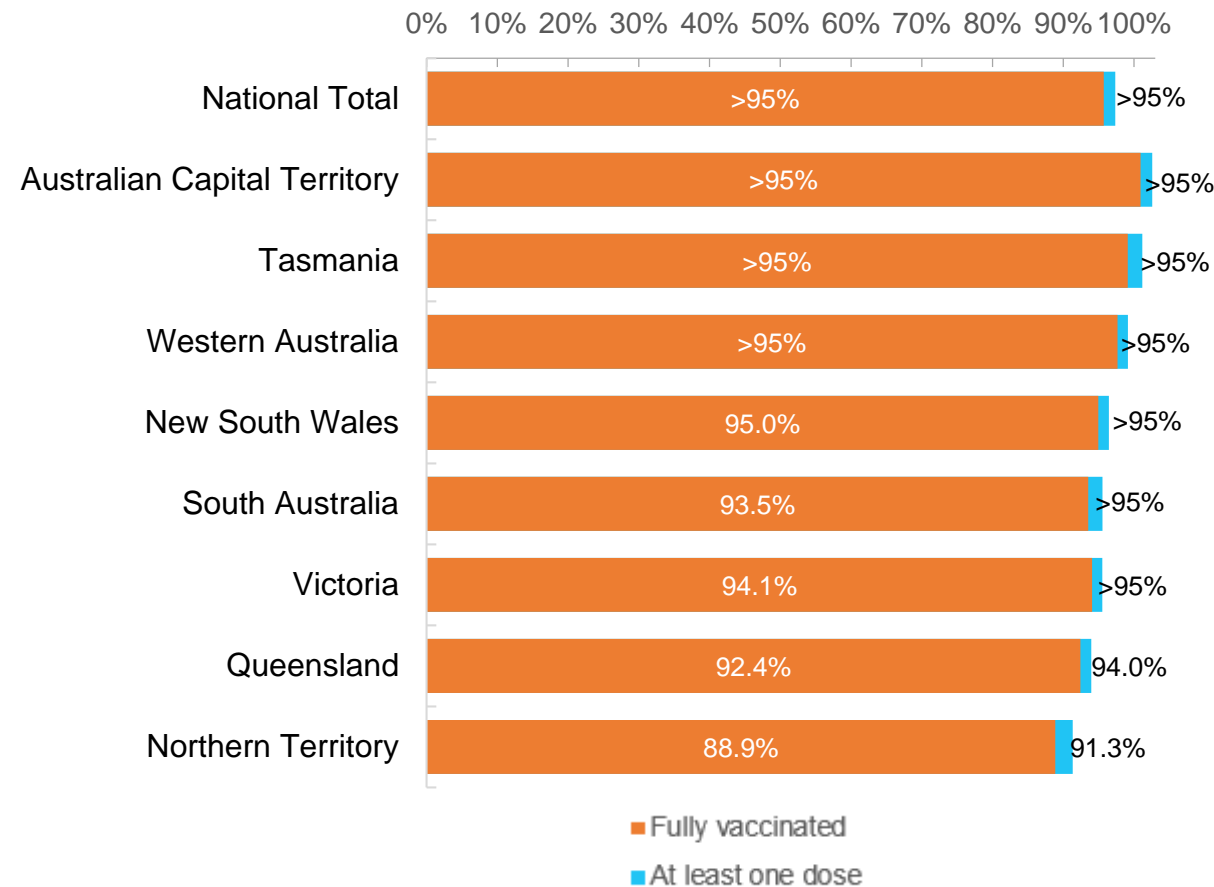


*Not an indication of percentage vaccinated, numbers will exceed 100 due to multiple doses required per person of the population. All doses are included for those aged 12 and above, and are based on vaccination provider location.

Data as at:
03 Jun 2022

Australia's COVID-19
Vaccine Roadmap

First and Second Doses by residential location



Aboriginal and Torres Strait Islander peoples

Number of people vaccinated

Data as at:
31 May 2022
Updated weekly

Australia's COVID-19
Vaccine Roadmap



442,855

people over the age of 16
have had at least one dose

84.9%

of people over the age of 16
have had at least one dose



424,192

people over the age of 16
are fully vaccinated

81.4%

of people over the age of 16 are
fully vaccinated



People aged 12 – 15 years

48,345

42,517

68.3%

At least one dose

60.0%

Fully vaccinated

178 Aboriginal community controlled health services (ACCHS)

0#
ACT

50
NSW

27
NT

44
QLD

12
SA

3
TAS

21
VIC

21
WA

Medicare Address State ^{##}	Individuals Dose 1	Individuals Dose 1 %	Individuals Dose 2	Individuals Dose 2 %
Australian Capital Territory	4,785	91.4%	4,663	89.0%
New South Wales	136,223	87.3%	133,150	85.4%
Northern Territory	41,526	89.6%	39,512	85.3%
Queensland	116,270	81.8%	110,848	78.0%
South Australia	20,049	80.5%	18,653	74.9%
Tasmania	13,961	88.8%	13,553	86.2%
Victoria	35,691	90.4%	34,911	88.5%
Western Australia	53,737	86.7%	49,937	80.6%
Unknown/Other Territories	20,613	69.7%	18,965	64.1%
Totals	442,855	84.9%	424,192	81.4%

Source: Australian Immunisation Register

*Identifying as Aboriginal and Torres Strait Islander is optional and the estimated population may be under reported.

**Includes all Aboriginal and Torres Strait Islander peoples who have received a vaccination, not limited to those administered in an ACCHS setting

#ACCHS in the ACT are currently operating as a Commonwealth Vaccine Clinics so not included to avoid double counting

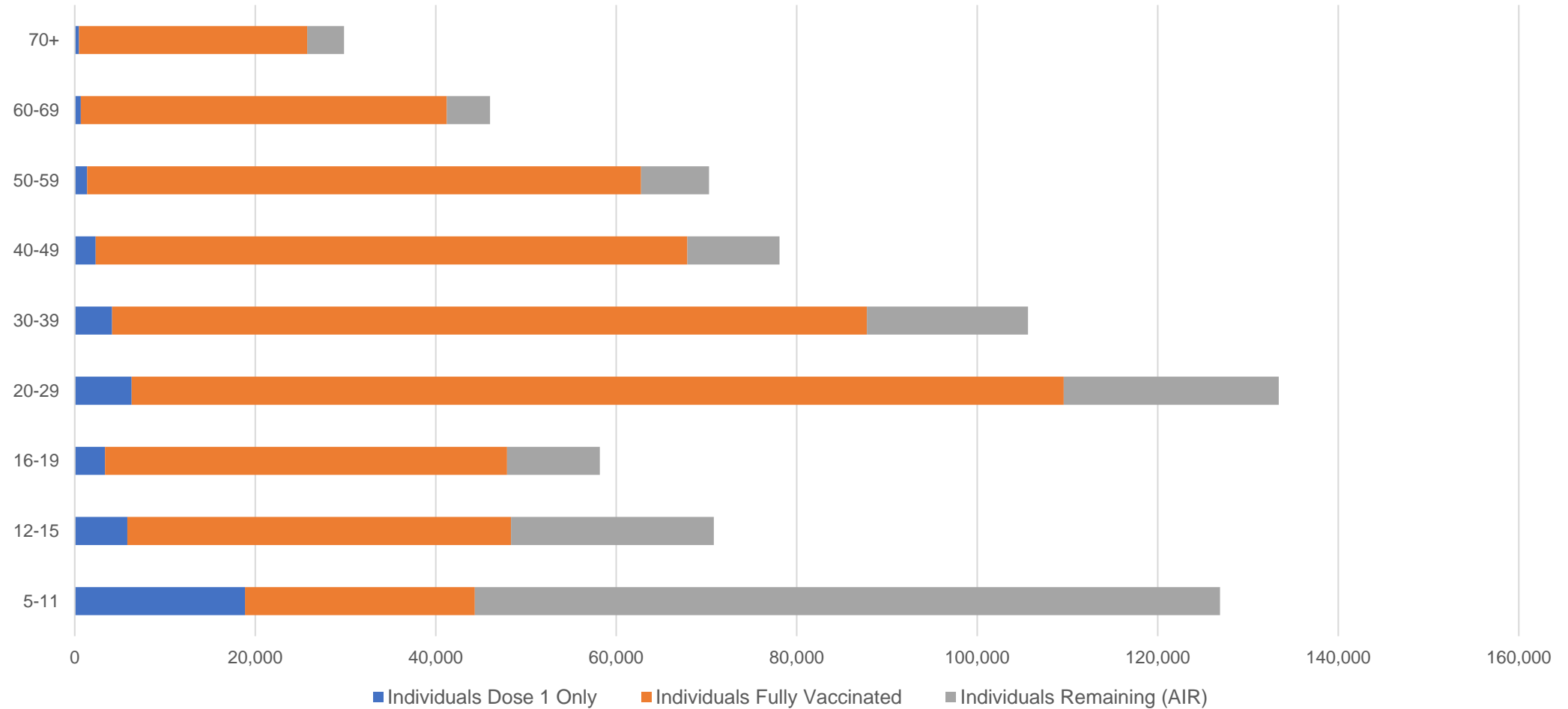
##The above table includes all identified Aboriginal and Torres Strait Islander people who are aged 16 and above by their state of residence.

Aboriginal and Torres Strait Islander peoples

Number of people vaccinated by age

Data as at:
31 May 2022
Updated weekly

Australia's COVID-19
Vaccine Roadmap



Source: Australian Immunisation Register

Commonwealth primary care

Data as at:
03 Jun 2022

Australia's COVID-19
Vaccine Roadmap



Primary care vaccine administration sites

5,714	128	178	3,601
GPs	CVCs	ACCHS	Pharmacies



36,888,583 total vaccine doses administered
primary care settings as at 03 June
+ 48,100 recorded in the last 24 hours

Primary care vaccinations by provider type

	Doses administered	Daily increase	7 day increase
General Practice* includes other Commonwealth	29,552,776	33,727	198,883
Pharmacy	7,335,807	14,373	79,063

NSW
12,725,903
(+15,821 daily increase)

VIC
9,159,672
(+11,877 daily increase)

QLD
7,095,653
(+9,418 daily increase)

WA
3,881,902
(+4,962 daily increase)

TAS
698,134
(+1,376 daily increase)

SA
2,208,356
(+3,523 daily increase)

ACT
582,751
(+830 daily increase)

NT
219,123
(+291 daily increase)

317,089

doses administered to persons
residing in other territories or with
missing residential information

*General practice includes Commonwealth Vaccination Clinics, Aboriginal Community Health Centres, Royal Flying Doctor Service and other Commonwealth vaccination facilities

Source: Australian Immunisation Register

Data as at:
03 Jun 2022

Commonwealth aged care and disability doses administered



1,303,426 (+ 1,183 last 24 hours)

Total vaccine doses administered in aged care and disability facilities as at 03 June

Number of doses administered as part of the Commonwealth aged and disability care rollout

NSW
567,911
(+340 daily increase)

VIC
245,355
(+203 daily increase)

QLD
207,275
(+389 daily increase)

WA
110,181
(+70 daily increase)

TAS
23,581
(+27 daily increase)

SA
85,219
(+108 daily increase)

ACT
17,732
(<10 daily increase)

NT
7,669
(+13 daily increase)

38,503

doses administered to persons
residing in other territories or with
missing residential information

*Sourced from the Australian Immunisation Register. Includes all persons vaccinated at participating residential aged care, disability and related industry settings.

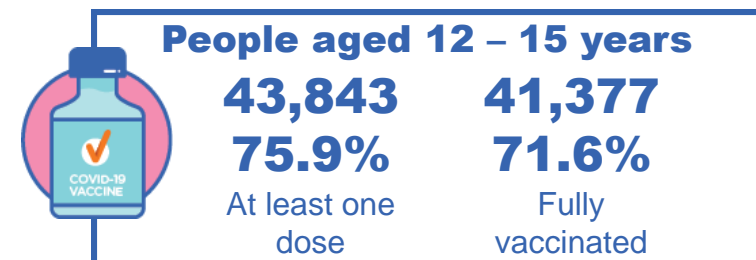
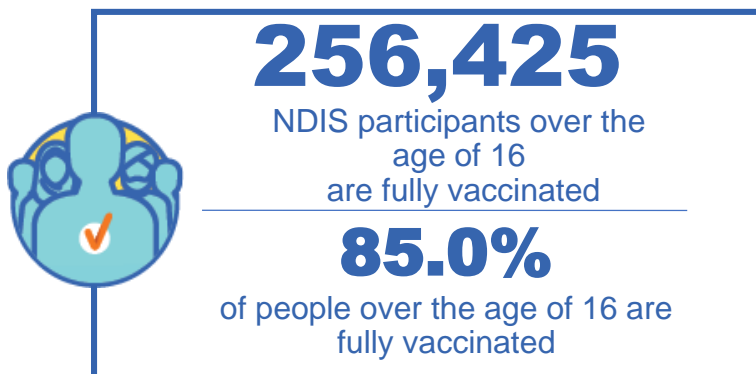
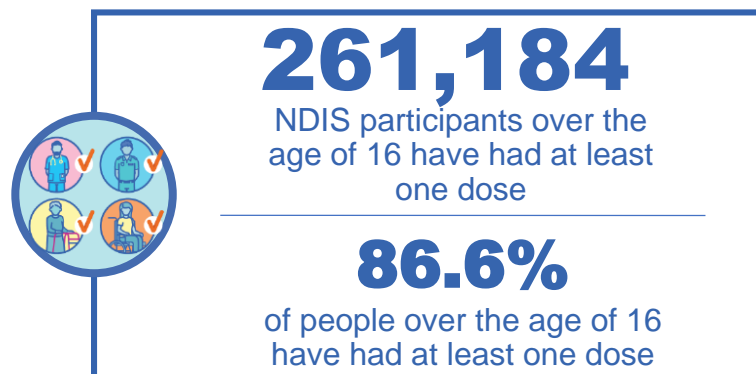
**State level breakdown indicates the residential location and may not align to the state in which the vaccination occurred.

Source: Australian Immunisation Register

National Disability Insurance Scheme (NDIS) reported vaccinations

Data as at:
02 June 2022
Updated weekly

Australia's COVID-19
Vaccine Roadmap



NDIS participant vaccinations

	People aged 16+ with at least one dose	People aged 16+ fully vaccinated	% People aged 16+ with at least one dose	% People aged 16+ fully vaccinated
ACT	4,929	4,861	88.8%	87.6%
NSW	80,045	78,751	87.2%	85.8%
NT	2,265	2,198	77.6%	75.3%
QLD	51,652	50,676	84.7%	83.1%
SA	21,354	20,846	84.3%	82.3%
TAS	6,539	6,388	87.0%	85.0%
VIC	69,437	68,262	87.8%	86.3%
WA	24,963	24,443	87.9%	86.1%
National	261,184	256,425	86.6%	85.0%

Source: Linkage between National Disability Insurance Agency data and the Australian Immunisation Register. Total NDIS participant numbers as at 30 May. Australian Immunisation Register data as at 01 June. Includes all participants regardless of residence type.

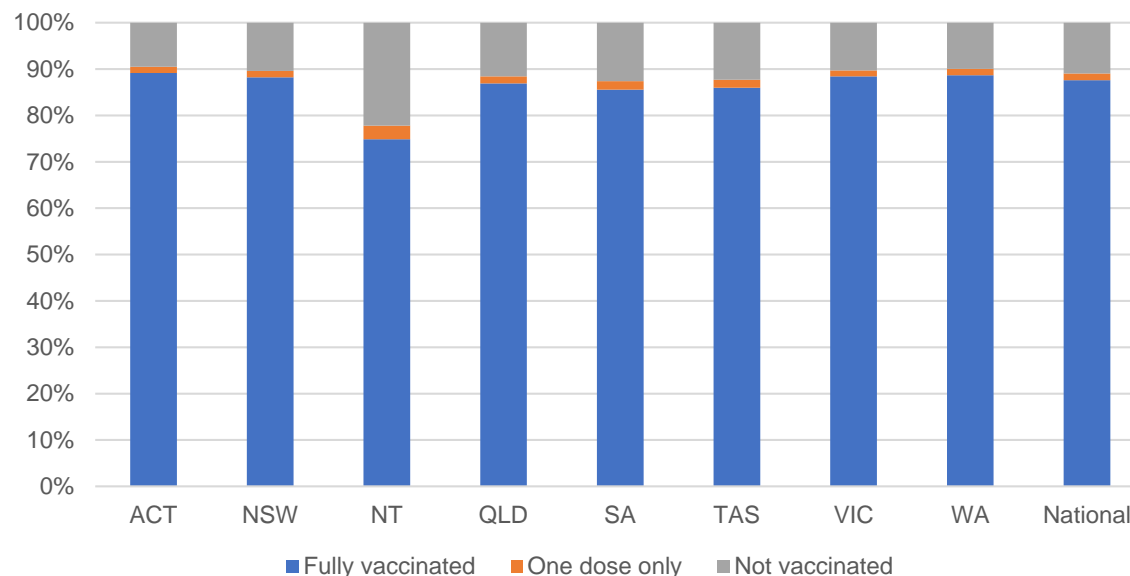
National Disability Insurance Scheme (NDIS) reported vaccinations

Data as at:
02 June 2022
Updated weekly

Australia's COVID-19
Vaccine Roadmap

NATIONAL	Total people with at least one dose	People fully vaccinated	Total number of individuals in cohort	% People with at least one dose	% People fully vaccinated
NDIS participants living in disability accommodation	20,872	20,537	23,469	88.9%	87.5%

NDIS participants in disability and aged care accommodation



Source: Linkage between National Disability Insurance Agency data and the Australian Immunisation Register. Includes participants residing in disability accommodation only.

Source: Total NDIS participant numbers as at 30 May. Participant data as at 31 May. Australian Immunisation Register data as at 01 June. Worker data as at 02 June.

NDIS workforce vaccinations

	NDIS workers with at least one dose	NDIS workers fully vaccinated	% NDIS workers with at least one dose	% NDIS workers fully vaccinated
NSW	126,380	121,370	98.2%	94.4%
VIC	117,785	114,472	98.4%	95.6%
QLD	71,137	70,199	97.7%	96.4%
WA	34,364	32,891	98.7%	94.5%
SA	35,871	33,669	98.6%	92.5%
TAS	10,860	10,618	99.5%	97.3%
ACT	12,303	12,281	99.8%	99.6%
NT	3,929	3,781	99.6%	95.9%
TOTAL	412,629	399,281	98.4%	95.2%

Source: the NDIS Commission has established a requirement for registered NDIS providers who provide intensive disability support services to report on the vaccination status of workers they employ, or otherwise engage, to deliver NDIS-funded supports and services, and who are required to be vaccinated in accordance with in-force state and territory public health orders. The statistics reflect data reported to the NDIS Commission by registered NDIS providers and should be considered indicative and subject to change

Note: Some registered NDIS providers are yet to report on the vaccination status of their workforce. The NDIS Commission is working with those providers around reporting requirements.

Remaining workers not included include those exempt from vaccination requirements, workers whose vaccination status is not yet verified by the provider (such as workers on leave) and provider reporting anomalies.

Residential aged care vaccination rollout

Residential aged care facilities status

176,176

People fully vaccinated

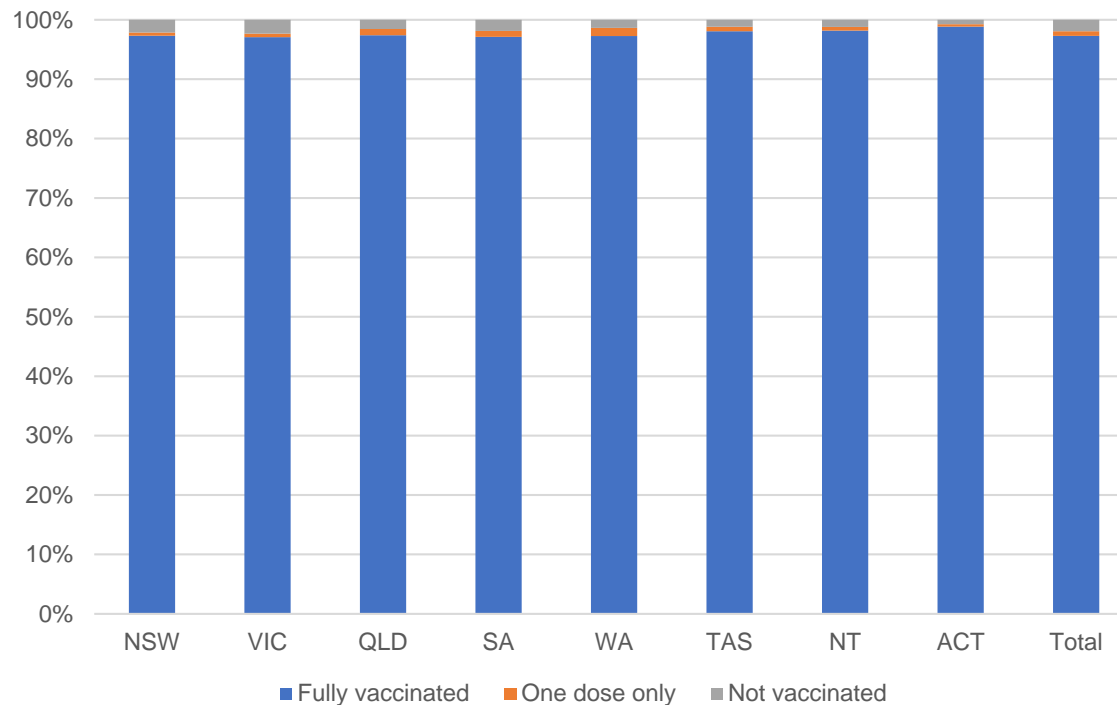
177,586

People with at least one dose

Australia's COVID-19 Vaccine Roadmap

Data as at:
02 June 2022
Updated weekly

Aged care resident vaccinations



Aged care worker vaccinations

Jurisdictions	Total workers with at least one dose	Workers fully vaccinated	% Workers with at least one dose	% Workers fully vaccinated
NSW	76,590	76,582	99.8%	99.8%
VIC	70,104	70,102	99.0%	99.0%
QLD	48,107	48,102	99.5%	99.5%
SA	27,301	27,289	99.5%	99.5%
WA	24,534	24,529	100.0%	100.0%
TAS	7,598	7,596	100.0%	100.0%
NT	902	902	100.0%	100.0%
ACT	2,946	2,946	100.0%	100.0%
Total	258,082	258,048	99.5%	99.5%

Source: My Aged Care Portal vaccination progress

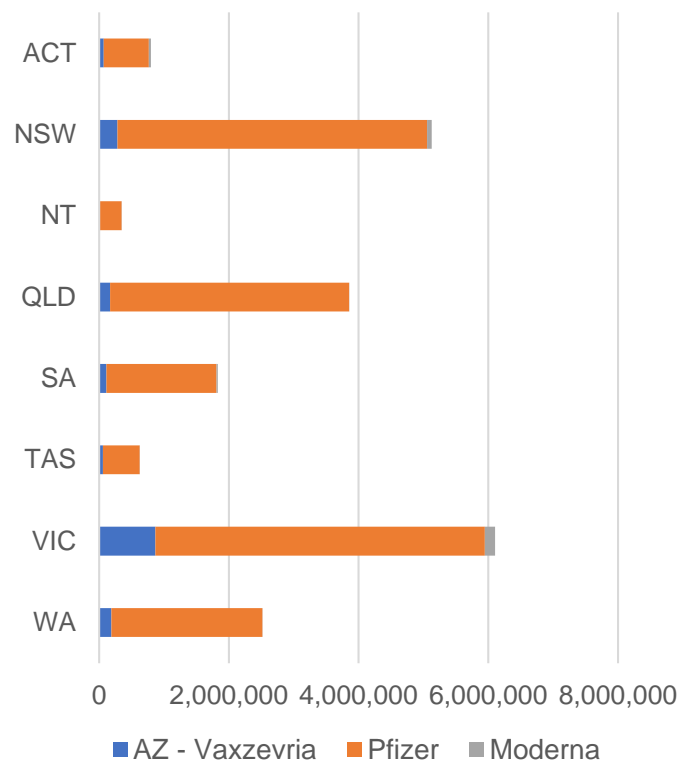
*Status updates are provided by facilities at least once per week. Reporting is updated Monday to Friday to encompass different facility updates being made on different days.

Data is sourced directly from Aged Care Service Providers and is not drawn or closely aligned with data from AIR due to inconsistencies and potential lags in uploading of records.

Data as at:
03 Jun 2022

Jurisdiction administered

Total vaccine doses administered in State and Territory clinics as at 03 June



21,214,868 total vaccine doses administered
in State and Territory clinics as at 03 June
+ **5,645** recorded in the last 24 hours
+ **34,358** recorded in the last 7 days

NSW
5,129,426
(+1,368 daily
increase)

VIC
6,109,413
(+1,509 daily
increase)

QLD
3,854,181
(+550 daily
increase)

WA
2,520,805
(+831 daily
increase)

TAS
625,532
(+93 daily
increase)

SA
1,831,661
(+733 daily
increase)

ACT
798,123
(+427 daily
increase)

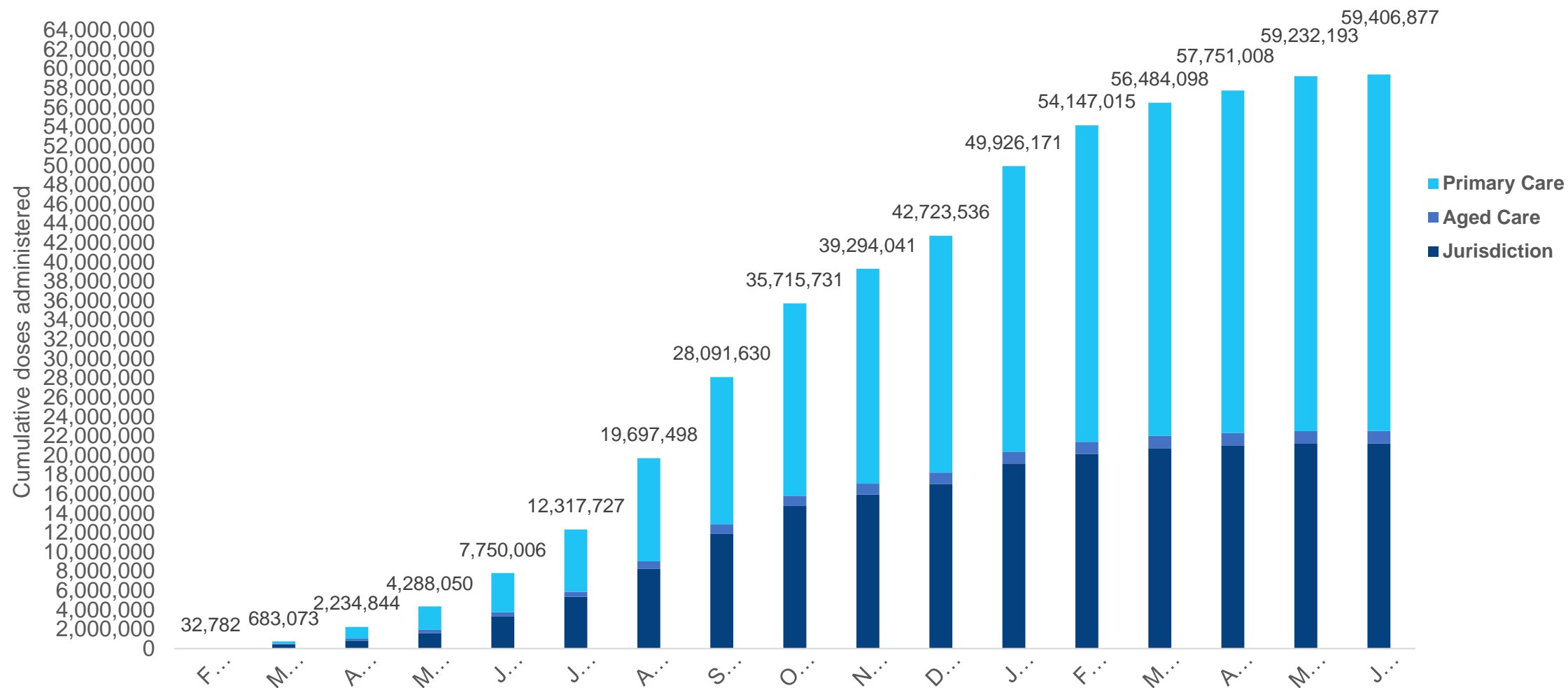
NT
345,727
(+134 daily
increase)

*Sourced from the Australian Immunisation Register. Numbers are calculated as difference in daily cumulative reported numbers to allow for historical corrections.

Source: Australian Immunisation Register

Cumulative doses administered by channel

Data as at:
03 Jun 2022



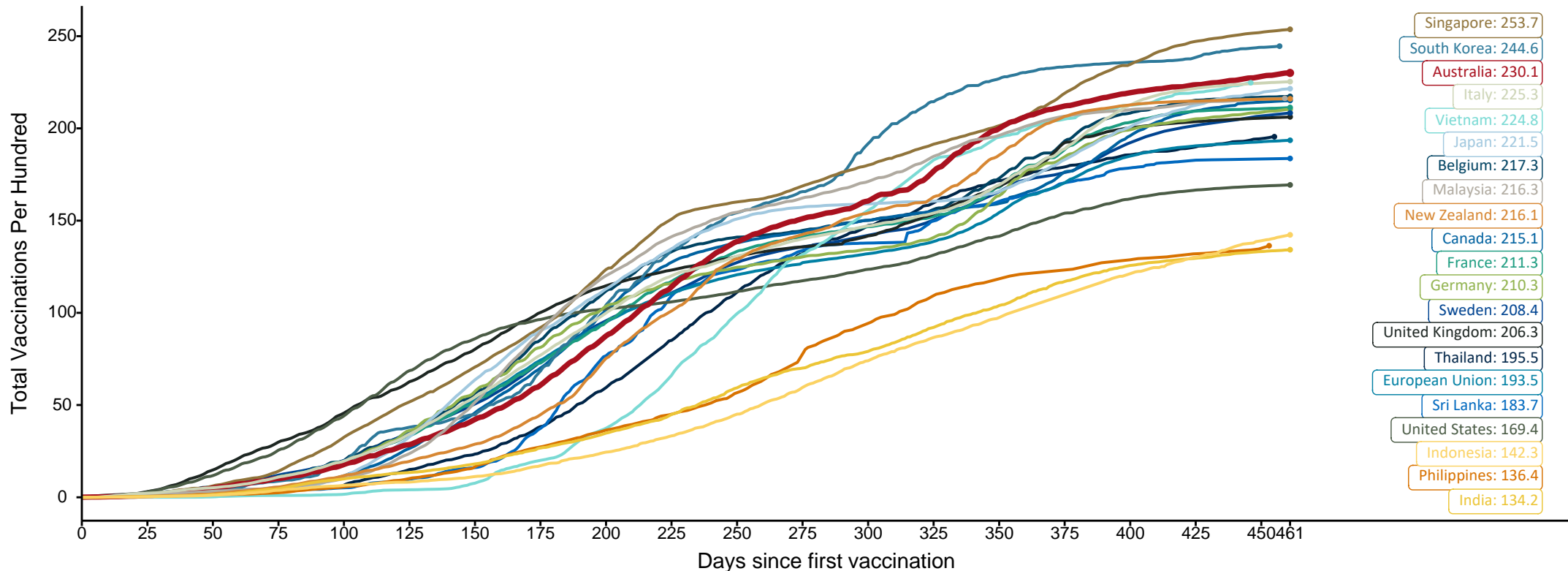
Source: Australian Immunisation Register

Doses at equivalent stages of rollout (Day 461)

Data as at:
29 May 2022
Updated weekly

The x-axis is truncated at the length of Australia's vaccination program. Countries with intermittent reporting have had their doses per 100 imputed to Australia's current stage of rollout. Israel excluded as it is beyond scale of the graph

Cumulative doses administered (29 May): **59,119,148**

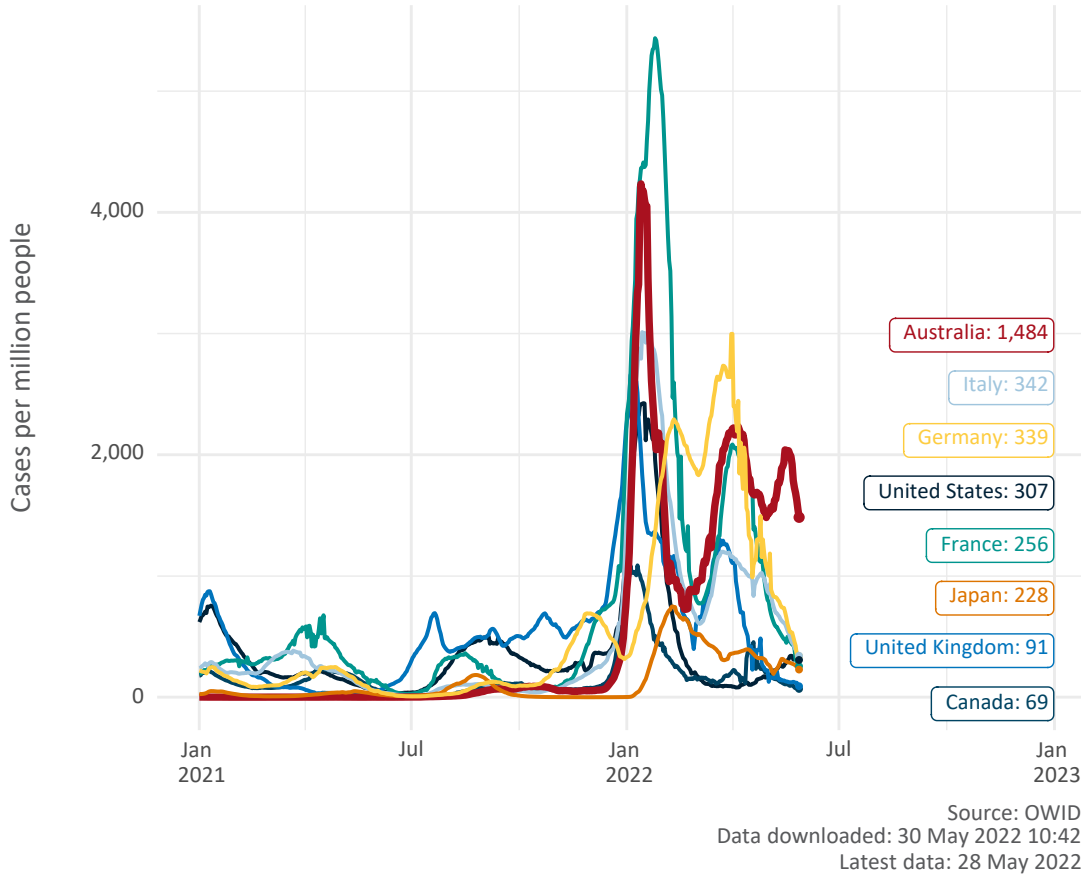


Note: From 11 January 2022, data for Australia includes all doses administered to people 5 and over. Prior to 11 January, data was for 12 and over.
Source: Department of Health (Australia), Our World in Data (international)
Latest data: 29 May

International data – COVID-19

Data as at:
29 May 2022
Updated weekly

New daily cases per million since 2021, Australia and G7 countries
Smoothed - 7 day average



COVID-19 deaths in past 7 days - Australia and select countries

