



Australian Government
Operation COVID Shield

COVID-19 Vaccine Roll-out

03 June 2022

Data as at:
02 Jun 2022

Total vaccine doses



59,351,949 total vaccine
doses administered nationally as at 02 June

+59,771 recorded in the last 24 hours



20,072,807

people have had at least one
dose

>95%

of people over the age of 16
have had at least one dose



19,738,421

people are fully vaccinated

>95%

of people over the age of 16 are
fully vaccinated



13,727,620

people over the age of 16
who have received three or
more doses

NSW
18,405,448
(+19,397 daily
increase)

VIC
15,584,841
(+15,126 daily
increase)

QLD
11,223,430
(+10,620 daily
increase)

WA
6,534,807
(+6,711 daily
increase)

TAS
1,343,443
(+1,292 daily
increase)

SA
4,116,770
(+4,295 daily
increase)

ACT
1,553,964
(+1,966 daily
increase)

NT
589,246
(+364 daily
increase)

*Administration state breakdown indicates state in which a vaccine was administered

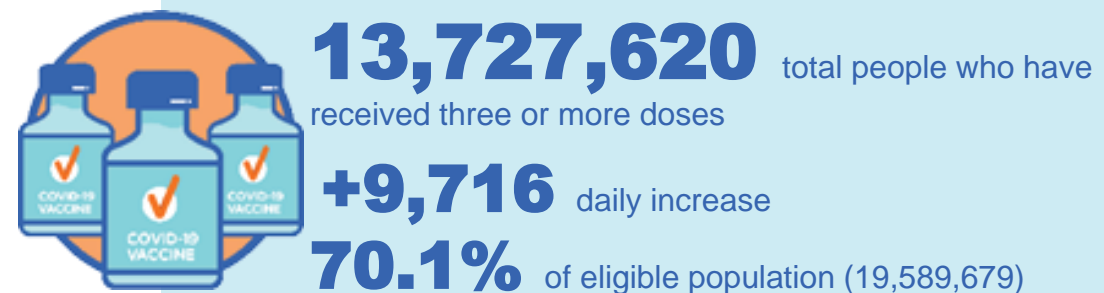
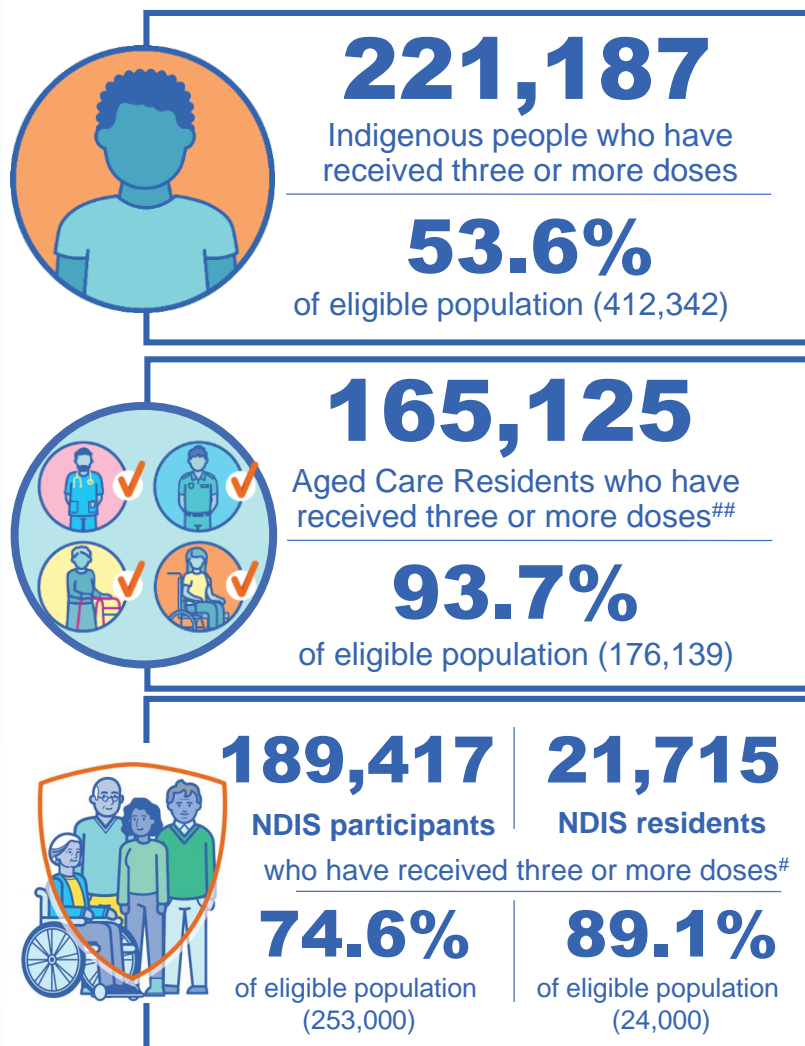
**Overall dose count includes instances of more than three doses per person in a small number of cases.

Source: Australian Immunisation Register

Booster Vaccinations

Australia's COVID-19
Vaccine Roadmap

Data as at:
02 Jun 2022



	Number of People	Daily Increase	% of Eligible
NSW	4,186,859	2,890	67.4%
VIC	3,664,015	2,239	72.3%
QLD	2,376,112	1,659	63.2%
WA	1,689,047	1,148	83.3%
SA	977,907	805	73.5%
TAS	313,801	200	72.6%
ACT	271,667	131	78.5%
NT	129,925	92	77.6%

*People may belong to multiple groups and could be represented in the above breakdowns multiple times.
NDIS participants data as at 31 May 2022. ## Aged Care Residents data as at 02 June 2022.

Source: Australian Immunisation Register

118,287 doses administered to persons residing in other territories or with missing residential information

Winter / Fourth Doses

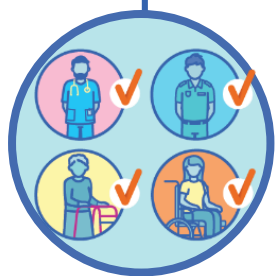
Data as at:
02 Jun 2022

Australia's COVID-19
Vaccine Roadmap



1,651,361 total people (16+) who have received four or more doses

+46,054 daily increase



1,472,054

People aged 65+ who have
received four or more doses

51.0%

of eligible population (2,888,501)

	Number of People 16+	Daily Increase
ACT	34,593	751
NSW	534,064	15,256
NT	7,220	139
QLD	313,637	8,243
SA	132,526	3,189
TAS	46,135	993
VIC	414,940	12,021
WA	160,311	5,114

7,935 doses administered to persons
residing in other territories or with
missing residential information

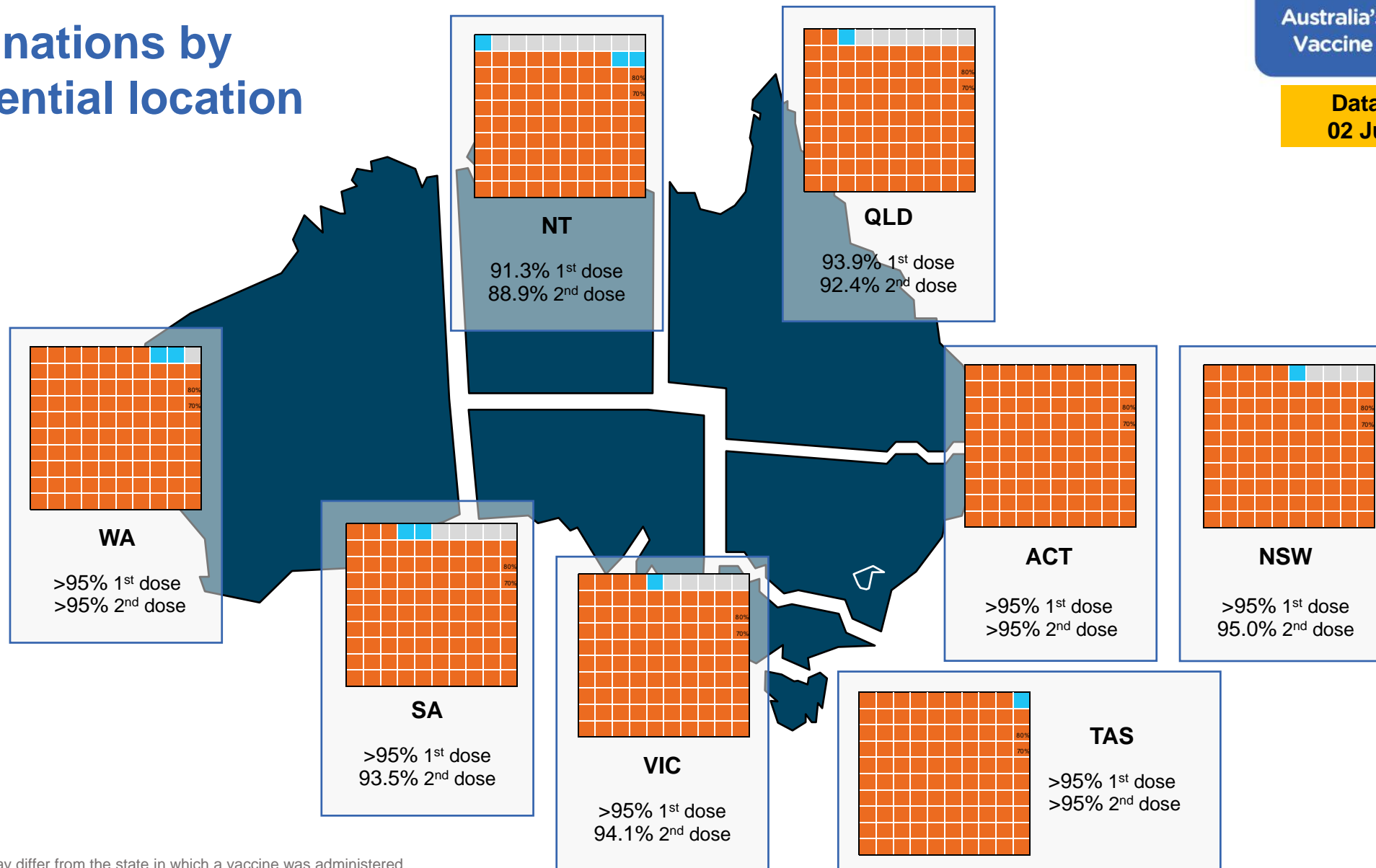
*People become eligible for a winter booster four months after their third dose.

Source: Australian Immunisation Register

Vaccinations by residential location

Australia's COVID-19
Vaccine Roadmap

Data as at:
02 Jun 2022



*Residential state may differ from the state in which a vaccine was administered

Commonwealth and Jurisdiction vaccine doses administered

Data as at:
02 Jun 2022



59,351,949 total vaccine
doses administered nationally as at 02 June
+ 59,771 recorded in the last 24 hours



21,209,223
doses administered by state
and territory facilities
+ 5,794
recorded in the last 24 hours

NSW	Jurisdictions	Commonwealth
Cumulative	5,128,058	13,277,390
Daily increase	704	18,693

TAS	Jurisdictions	Commonwealth
Cumulative	625,439	718,004
Daily increase	299	993

VIC	Jurisdictions	Commonwealth
Cumulative	6,107,904	9,476,937
Daily increase	1,884	13,242

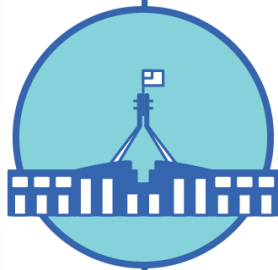
SA	Jurisdictions	Commonwealth
Cumulative	1,830,928	2,285,842
Daily increase	761	3,534

QLD	Jurisdictions	Commonwealth
Cumulative	3,853,631	7,369,799
Daily increase	580	10,040

ACT	Jurisdictions	Commonwealth
Cumulative	797,696	756,268
Daily increase	594	1,372

WA	Jurisdictions	Commonwealth
Cumulative	2,519,974	4,014,833
Daily increase	860	5,851

NT	Jurisdictions	Commonwealth
Cumulative	345,593	243,653
Daily increase	112	252



38,142,726
doses administered by
commonwealth facilities
+ 53,977
recorded in the last 24 hours

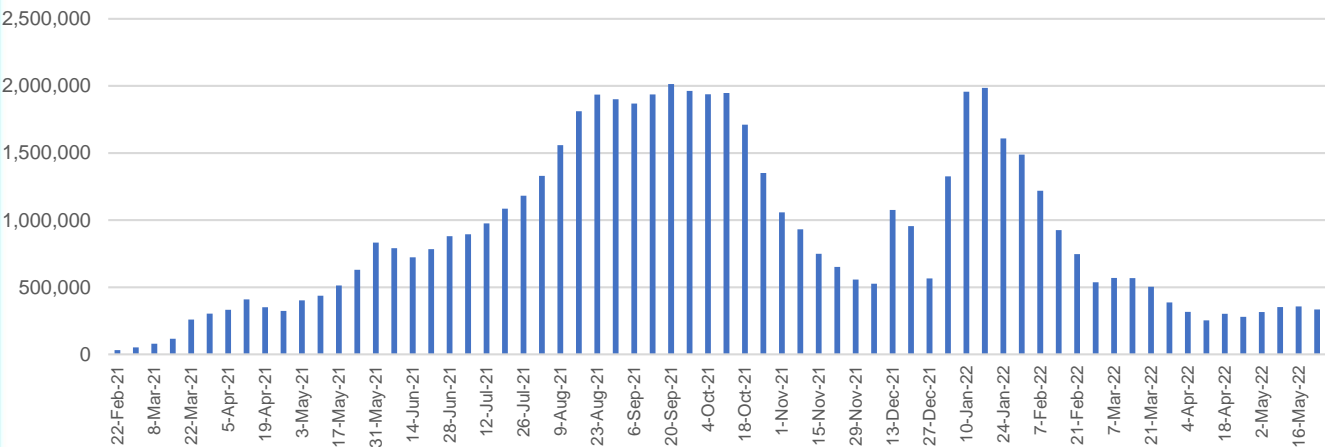
36,840,483 total vaccine doses
administered in primary care settings
1,302,243 total vaccine doses
administered in aged care and disability
settings

Vaccine milestone charts

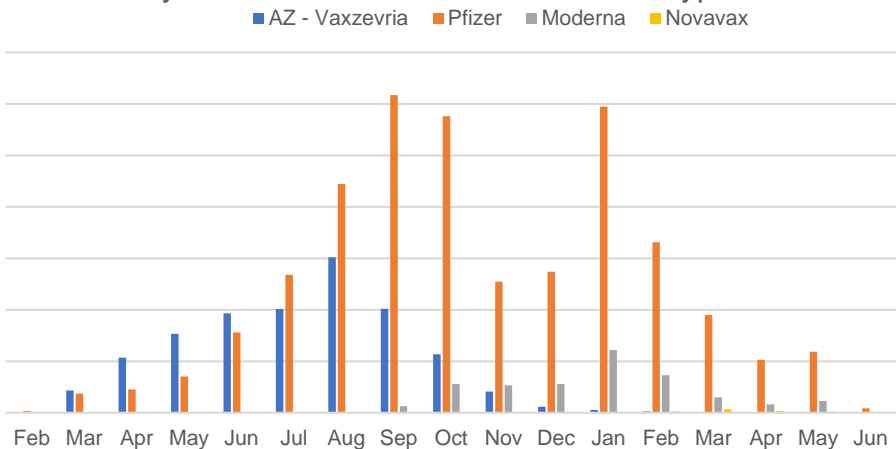
Data as at:
02 Jun 2022

Australia's COVID-19
Vaccine Roadmap

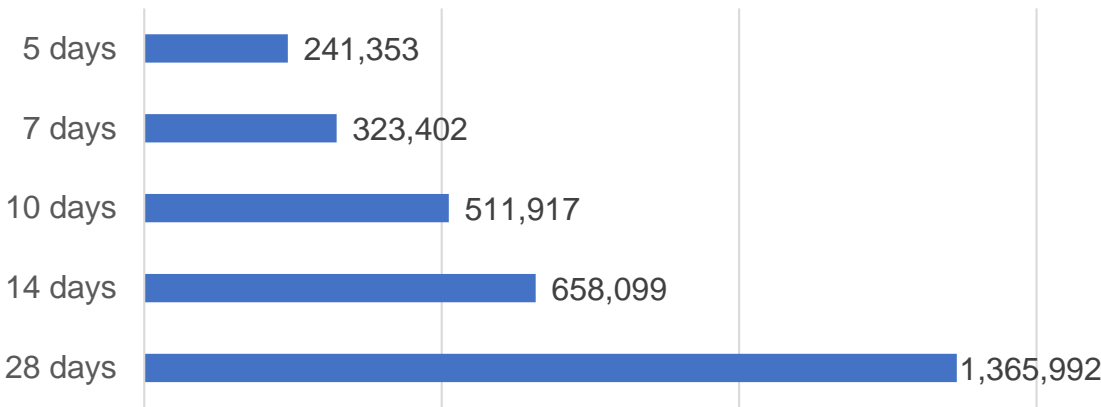
Doses Administered by Week



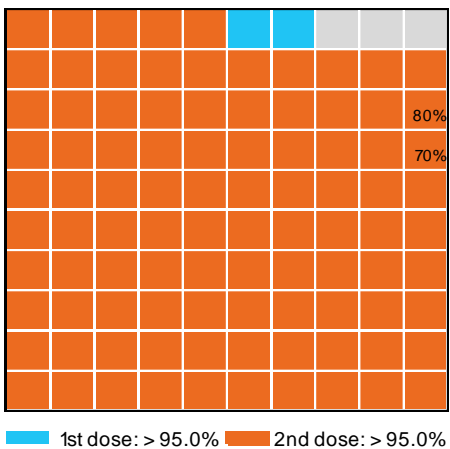
Doses by administration month and vaccine type



Doses Reported



Eligible population percentage coverage



*Each square represents 1% of the national population.
Squares are filled as milestones are achieved.

*Sourced from the Australian Immunisation Register.

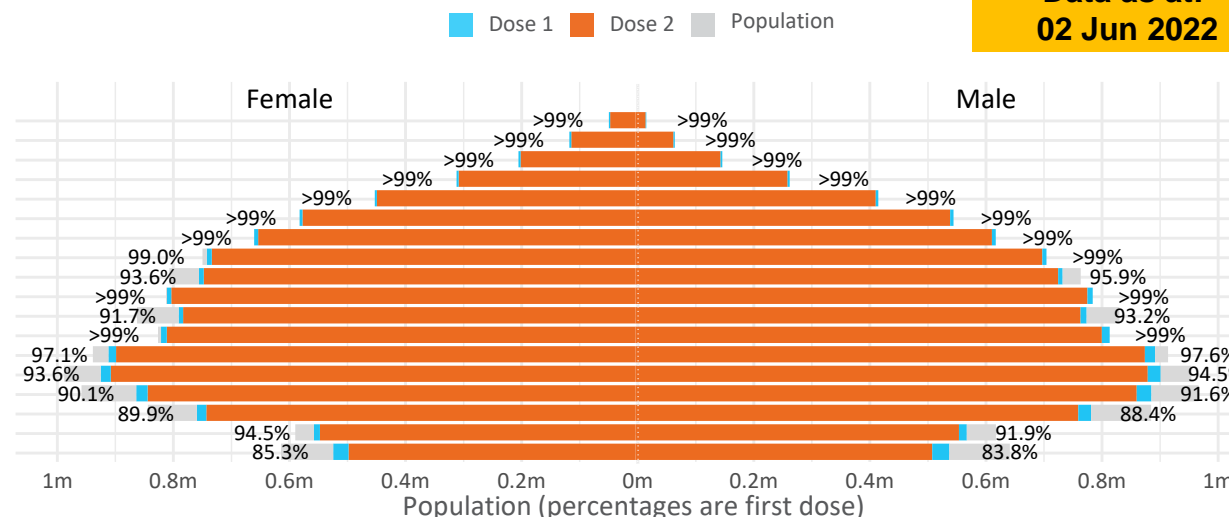
Doses by age and sex

First and second doses by age and sex

Australia's COVID-19
Vaccine Roadmap

Data as at:
02 Jun 2022

Age	Dose 1	Dose 2
95+	64,138 (>99%)	60,728 (>99%)
90-94	180,113 (>99%)	174,574 (>99%)
85-89	348,278 (>99%)	341,398 (>99%)
80-84	568,866 (>99%)	561,664 (>99%)
75-79	860,189 (>99%)	851,813 (>99%)
70-74	1,117,312 (>99%)	1,106,105 (>99%)
65-69	1,267,952 (>99%)	1,253,454 (>99%)
60-64	1,435,154 (>99%)	1,418,905 (98.8%)
55-59	1,475,755 (94.9%)	1,459,149 (93.8%)
50-54	1,581,710 (>99%)	1,564,757 (>99%)
45-49	1,551,397 (92.5%)	1,532,954 (91.4%)
40-44	1,622,126 (>99%)	1,598,114 (98.6%)
35-39	1,791,420 (97.6%)	1,759,358 (95.9%)
30-34	1,817,546 (94.5%)	1,775,800 (92.3%)
25-29	1,743,300 (91.4%)	1,695,802 (88.9%)
20-24	1,532,601 (89.5%)	1,492,822 (87.2%)
16-19	1,114,950 (93.2%)	1,091,024 (91.2%)
12-15	1,052,127 (84.6%)	996,578 (80.1%)

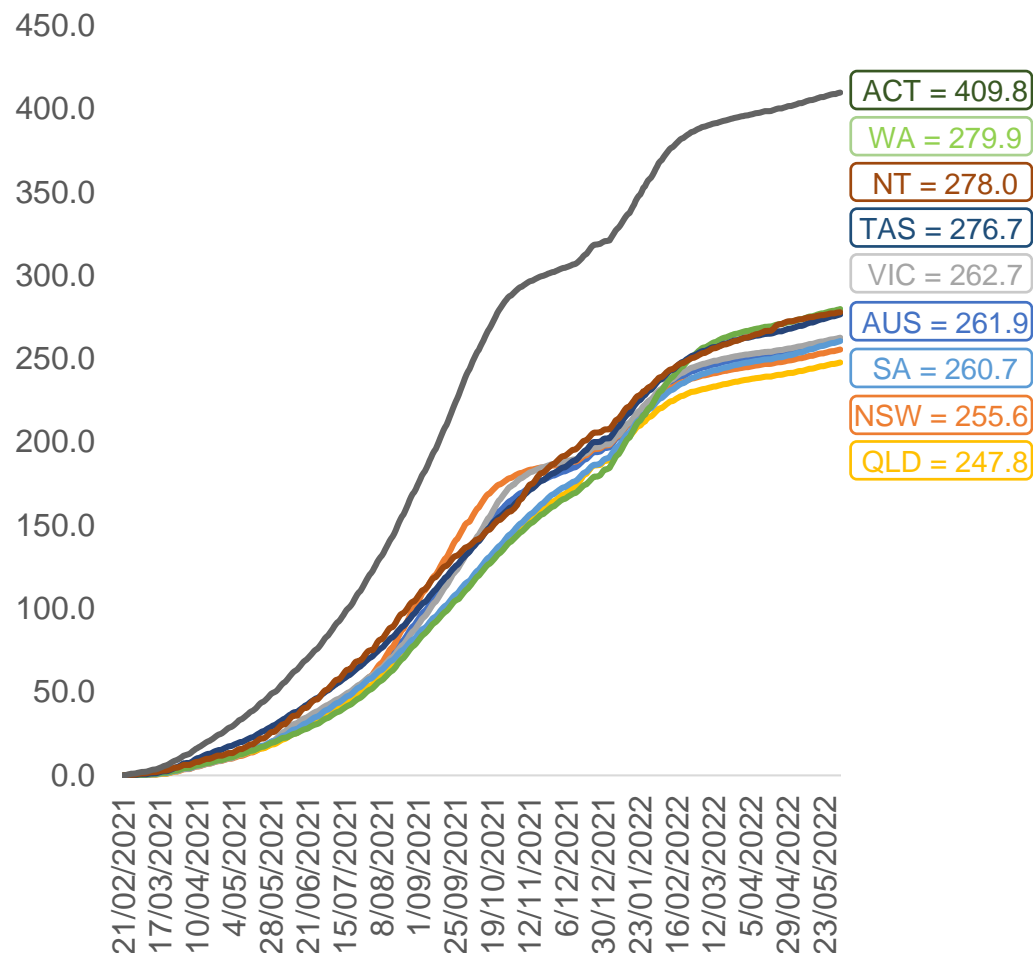


	AUS	ACT	NSW	NT	QLD	SA	TAS	VIC	WA
16 and over - dose 1	20,072,807	352,883	6,331,384	174,031	3,863,882	1,376,124	445,258	5,164,669	2,096,860
16 and over - dose 2	19,738,421	347,202	6,234,278	169,353	3,800,151	1,346,966	436,229	5,087,236	2,065,675
16 and over - population	20,619,959*	344,037	6,565,651	190,571	4,112,707	1,440,400	440,172	5,407,574	2,114,978
16 and over % with dose 1	97.35%	>99%	96.43%	91.32%	93.95%	95.54%	>99%	95.51%	>99%
16 and over % with dose 2	95.72%	>99%	94.95%	88.87%	92.40%	93.51%	>99%	94.08%	97.67%
5 to 11 - dose 1	1,197,897	31,898	357,567	13,213	207,777	83,983	28,570	325,903	141,166
5 to 11 - dose 2	884,220	27,085	269,210	8,586	147,749	62,053	22,902	241,702	100,316
5 to 11 - population	2,276,638	39,789	716,460	24,750	478,731	148,816	45,033	578,499	244,154
5 to 11 % with dose 1	52.62%	80.17%	49.91%	53.39%	43.40%	56.43%	63.44%	56.34%	57.82%
5 to 11 % with dose 2	38.84%	68.07%	37.58%	34.69%	30.86%	41.70%	50.86%	41.78%	41.09%
12 to 15 - dose 1	1,052,127	20,116	323,445	10,811	206,222	68,343	22,925	274,929	115,764
12 to 15 - dose 2	996,578	19,588	309,119	9,741	192,925	64,629	21,807	263,145	107,283
12 to 15 - population	1,243,990	19,693	390,330	13,060	270,146	82,747	26,308	308,611	132,869
12 to 15 % with dose 1	84.58%	>99%	82.86%	82.78%	76.34%	82.59%	87.14%	89.09%	87.13%
12 to 15 % with dose 2	80.11%	>99%	79.19%	74.59%	71.42%	78.10%	82.89%	85.27%	80.74%

*National population will not equal sum of listed jurisdictions due to a small number of people counted in national population residing in some 'other' territories. Sum of state doses will not add to national total as some records are unable to be geocoded to a State or Territory.
Doses sourced from Australian Immunisation Register, population from ABS ERP June 2020

Vaccinations by location

Cumulative total doses administered vs eligible state populations*

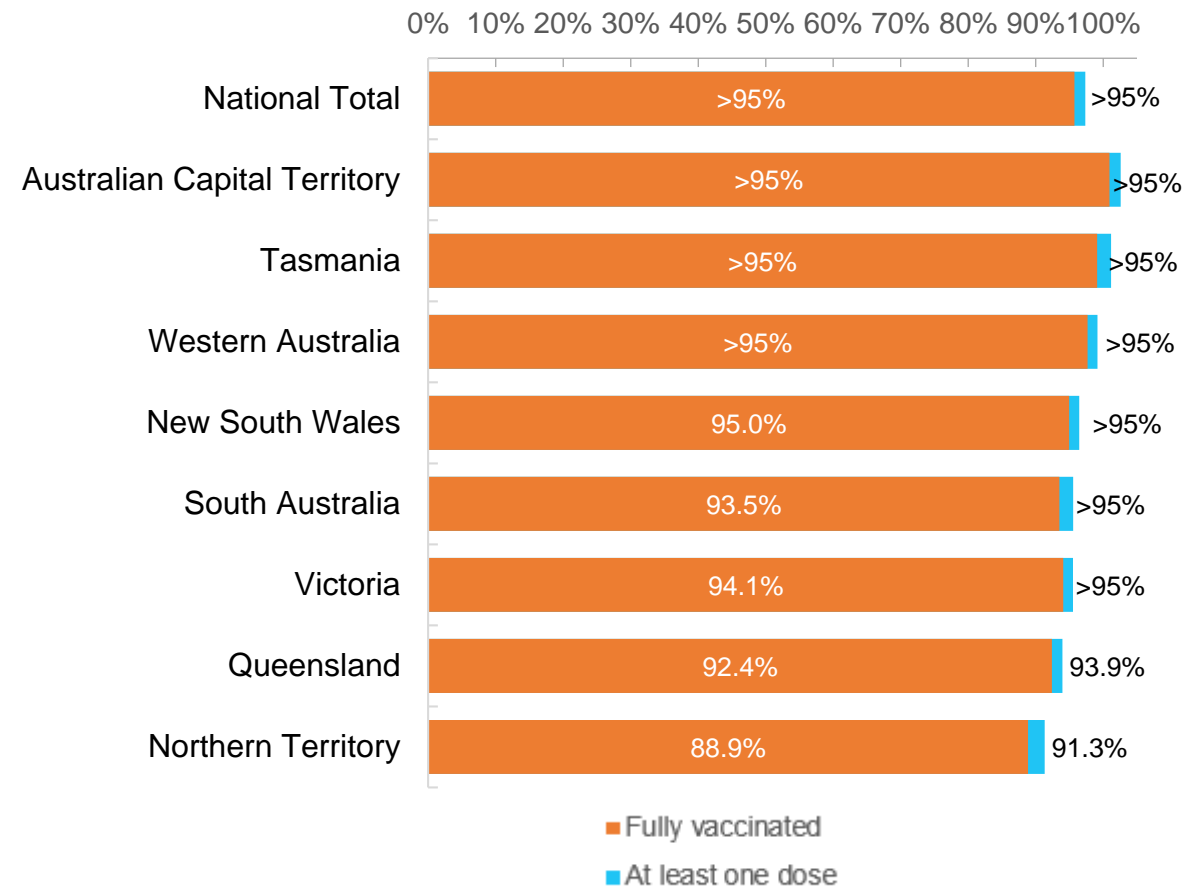


*Not an indication of percentage vaccinated, numbers will exceed 100 due to multiple doses required per person of the population. All doses are included for those aged 12 and above, and are based on vaccination provider location.

Data as at:
02 Jun 2022

Australia's COVID-19
Vaccine Roadmap

First and Second Doses by residential location



Aboriginal and Torres Strait Islander peoples

Number of people vaccinated

Data as at:
31 May 2022
Updated weekly

Australia's COVID-19
Vaccine Roadmap



442,855

people over the age of 16
have had at least one dose

84.9%

of people over the age of 16
have had at least one dose



424,192

people over the age of 16
are fully vaccinated

81.4%

of people over the age of 16 are
fully vaccinated



People aged 12 – 15 years

48,345

42,517

68.3%

At least one dose

60.0%

Fully vaccinated

178 Aboriginal community controlled health services (ACCHS)

0#

50

27

44

12

3

21

21

ACT

NSW

NT

QLD

SA

TAS

VIC

WA

Medicare Address State ^{##}	Individuals Dose 1	Individuals Dose 1 %	Individuals Dose 2	Individuals Dose 2 %
Australian Capital Territory	4,785	91.4%	4,663	89.0%
New South Wales	136,223	87.3%	133,150	85.4%
Northern Territory	41,526	89.6%	39,512	85.3%
Queensland	116,270	81.8%	110,848	78.0%
South Australia	20,049	80.5%	18,653	74.9%
Tasmania	13,961	88.8%	13,553	86.2%
Victoria	35,691	90.4%	34,911	88.5%
Western Australia	53,737	86.7%	49,937	80.6%
Unknown/Other Territories	20,613	69.7%	18,965	64.1%
Totals	442,855	84.9%	424,192	81.4%

Source: Australian Immunisation Register

*Identifying as Aboriginal and Torres Strait Islander is optional and the estimated population may be under reported.

**Includes all Aboriginal and Torres Strait Islander peoples who have received a vaccination, not limited to those administered in an ACCHS setting

#ACCHS in the ACT are currently operating as a Commonwealth Vaccine Clinics so not included to avoid double counting

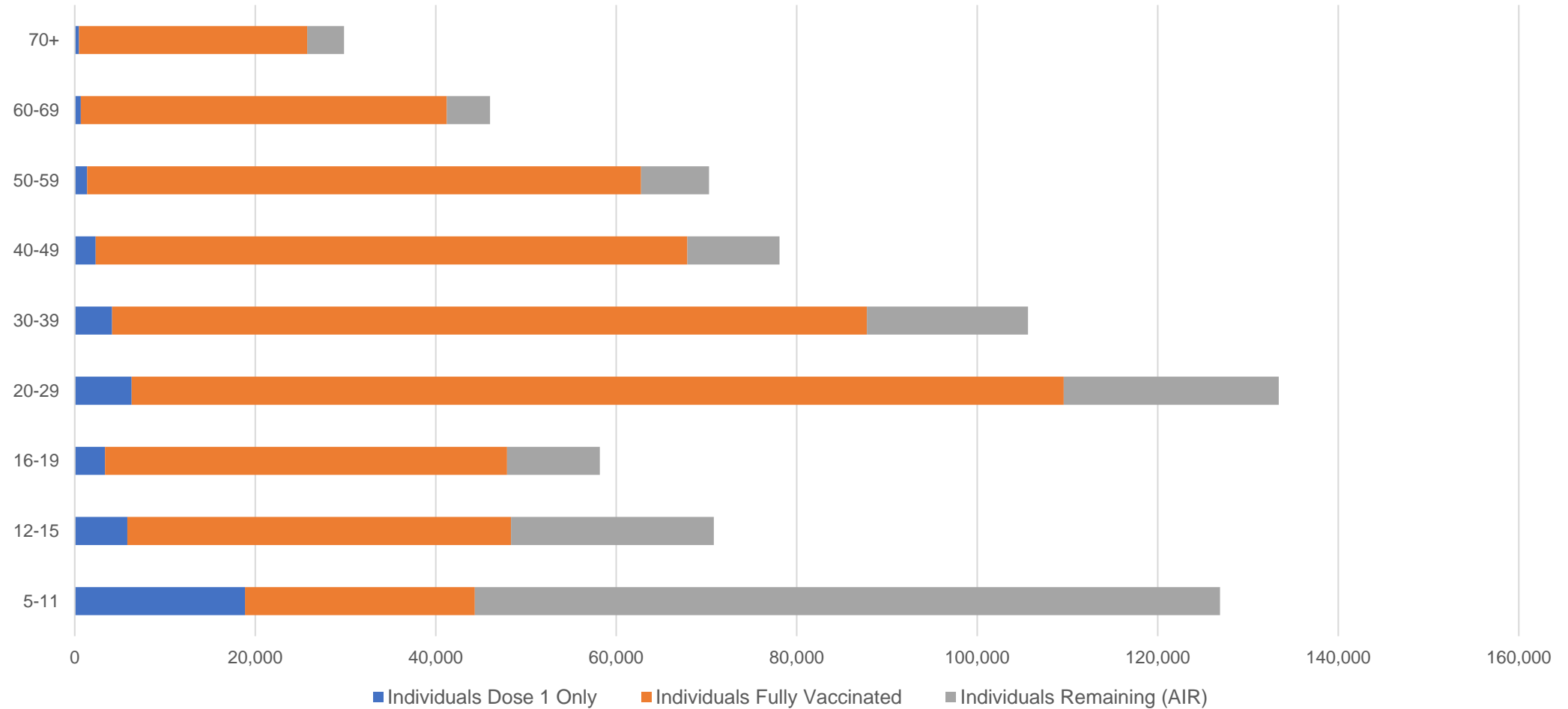
##The above table includes all identified Aboriginal and Torres Strait Islander people who are aged 16 and above by their state of residence.

Aboriginal and Torres Strait Islander peoples

Number of people vaccinated by age

Data as at:
31 May 2022
Updated weekly

Australia's COVID-19
Vaccine Roadmap



Source: Australian Immunisation Register

Commonwealth primary care

Data as at:
02 Jun 2022

Australia's COVID-19
Vaccine Roadmap



Primary care vaccine administration sites

5,720	128	178	3,602
GPs	CVCs	ACCHS	Pharmacies



36,840,483 total vaccine doses administered
primary care settings as at 02 June
+ 52,871 recorded in the last 24 hours

Primary care vaccinations by provider type

	Doses administered	Daily increase	7 day increase
General Practice* includes other Commonwealth	29,519,049	36,948	202,238
Pharmacy	7,321,434	15,923	79,203

NSW
12,710,082
(+17,845 daily increase)

VIC
9,147,795
(+12,950 daily increase)

QLD
7,086,235
(+9,614 daily increase)

WA
3,876,940
(+5,462 daily increase)

TAS
696,758
(+1,116 daily increase)

SA
2,204,833
(+3,360 daily increase)

ACT
581,921
(+925 daily increase)

NT
218,832
(+170 daily increase)

317,087

doses administered to persons
residing in other territories or with
missing residential information

*General practice includes Commonwealth Vaccination Clinics, Aboriginal Community Health Centres, Royal Flying Doctor Service and other Commonwealth vaccination facilities

Source: Australian Immunisation Register

Data as at:
02 Jun 2022

Commonwealth aged care and disability doses administered



1,302,243 (+ 1,106 last 24 hours)

Total vaccine doses administered in aged care and disability facilities as at 02 June

Number of doses administered as part of the Commonwealth aged and disability care rollout

NSW
567,571
(+266 daily increase)

VIC
245,152
(+360 daily increase)

QLD
206,886
(+25 daily increase)

WA
110,111
(+149 daily increase)

TAS
23,554
(<10 daily increase)

SA
85,111
(+35 daily increase)

ACT
17,729
(<10 daily increase)

NT
7,656
(<10 daily increase)

38,473

doses administered to persons
residing in other territories or with
missing residential information

*Sourced from the Australian Immunisation Register. Includes all persons vaccinated at participating residential aged care, disability and related industry settings.

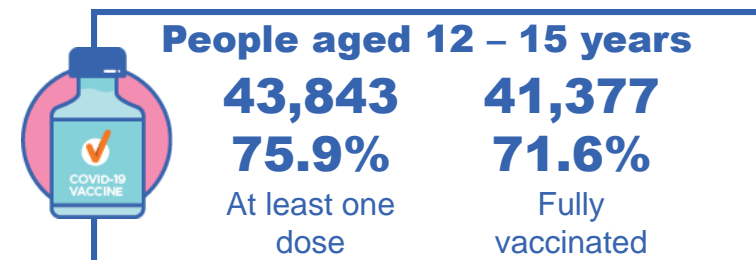
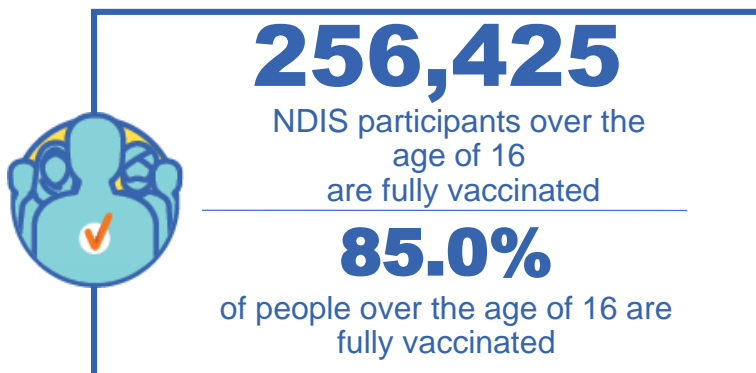
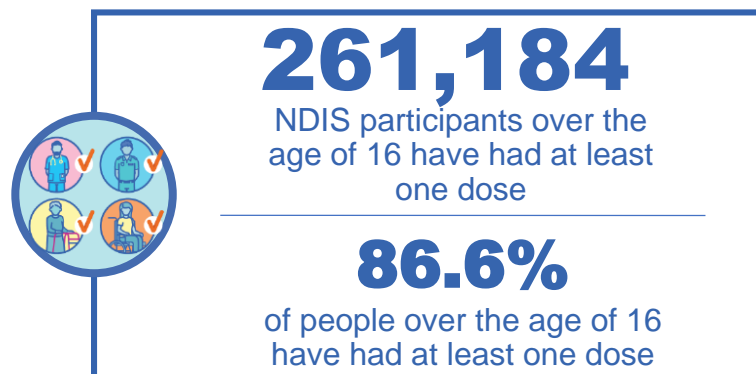
**State level breakdown indicates the residential location and may not align to the state in which the vaccination occurred.

Source: Australian Immunisation Register

National Disability Insurance Scheme (NDIS) reported vaccinations

Data as at:
02 June 2022
Updated weekly

Australia's COVID-19
Vaccine Roadmap



NDIS participant vaccinations

	People aged 16+ with at least one dose	People aged 16+ fully vaccinated	% People aged 16+ with at least one dose	% People aged 16+ fully vaccinated
ACT	4,929	4,861	88.8%	87.6%
NSW	80,045	78,751	87.2%	85.8%
NT	2,265	2,198	77.6%	75.3%
QLD	51,652	50,676	84.7%	83.1%
SA	21,354	20,846	84.3%	82.3%
TAS	6,539	6,388	87.0%	85.0%
VIC	69,437	68,262	87.8%	86.3%
WA	24,963	24,443	87.9%	86.1%
National	261,184	256,425	86.6%	85.0%

Source: Linkage between National Disability Insurance Agency data and the Australian Immunisation Register. Total NDIS participant numbers as at 30 May. Australian Immunisation Register data as at 01 June. Includes all participants regardless of residence type.

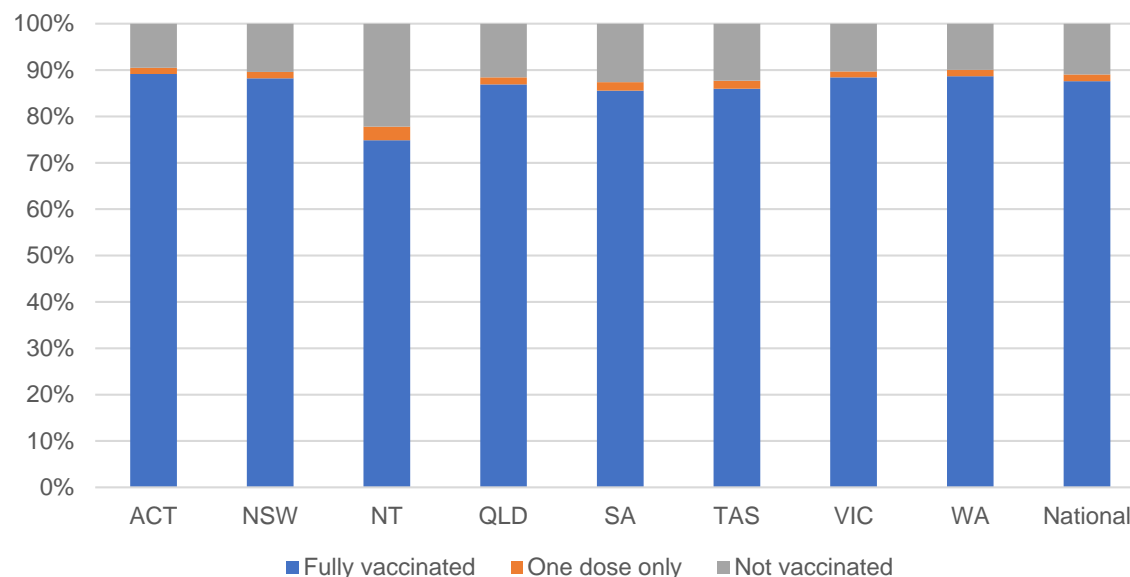
National Disability Insurance Scheme (NDIS) reported vaccinations

Data as at:
02 June 2022
Updated weekly

Australia's COVID-19
Vaccine Roadmap

NATIONAL	Total people with at least one dose	People fully vaccinated	Total number of individuals in cohort	% People with at least one dose	% People fully vaccinated
NDIS participants living in disability accommodation	20,872	20,537	23,469	88.9%	87.5%

NDIS participants in disability and aged care accommodation



Source: Linkage between National Disability Insurance Agency data and the Australian Immunisation Register. Includes participants residing in disability accommodation only.

Source: Total NDIS participant numbers as at 30 May. Participant data as at 31 May. Australian Immunisation Register data as at 01 June. Worker data as at 02 June.

NDIS workforce vaccinations

	NDIS workers with at least one dose	NDIS workers fully vaccinated	% NDIS workers with at least one dose	% NDIS workers fully vaccinated
NSW	126,380	121,370	98.2%	94.4%
VIC	117,785	114,472	98.4%	95.6%
QLD	71,137	70,199	97.7%	96.4%
WA	34,364	32,891	98.7%	94.5%
SA	35,871	33,669	98.6%	92.5%
TAS	10,860	10,618	99.5%	97.3%
ACT	12,303	12,281	99.8%	99.6%
NT	3,929	3,781	99.6%	95.9%
TOTAL	412,629	399,281	98.4%	95.2%

Source: the NDIS Commission has established a requirement for registered NDIS providers who provide intensive disability support services to report on the vaccination status of workers they employ, or otherwise engage, to deliver NDIS-funded supports and services, and who are required to be vaccinated in accordance with in-force state and territory public health orders. The statistics reflect data reported to the NDIS Commission by registered NDIS providers and should be considered indicative and subject to change.

Note: Some registered NDIS providers are yet to report on the vaccination status of their workforce. The NDIS Commission is working with those providers around reporting requirements.

Remaining workers not included include those exempt from vaccination requirements, workers whose vaccination status is not yet verified by the provider (such as workers on leave) and provider reporting anomalies.

Residential aged care vaccination rollout

Residential aged care facilities status

176,176

People fully vaccinated

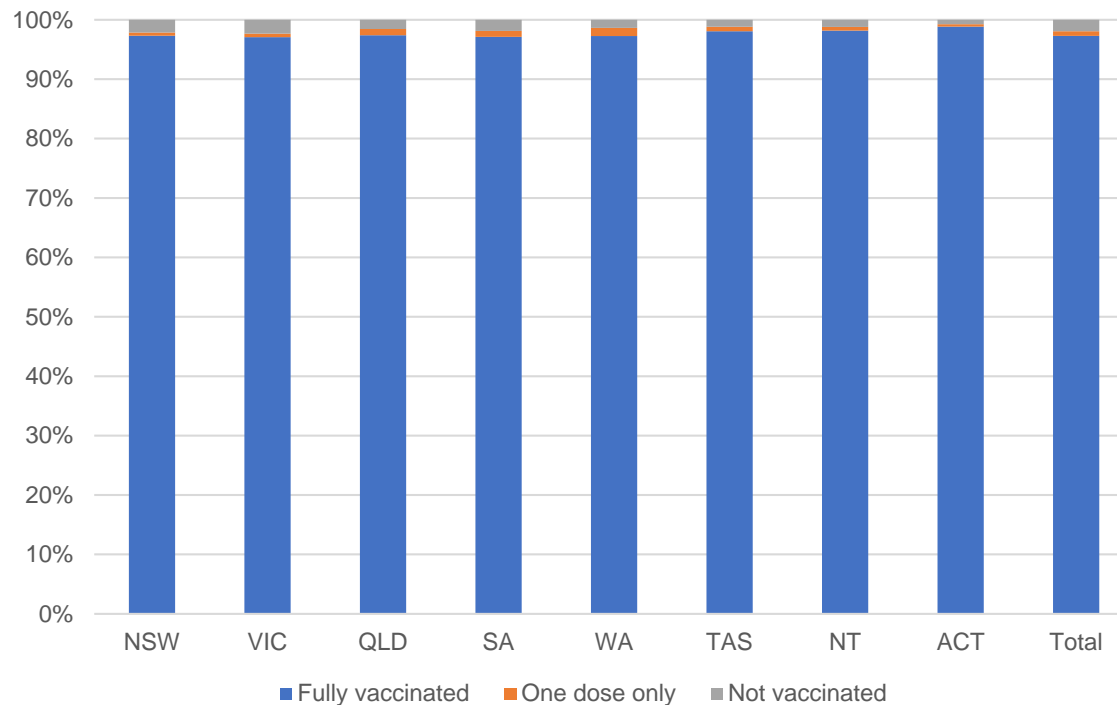
177,586

People with at least one dose

Australia's COVID-19 Vaccine Roadmap

Data as at:
02 June 2022
Updated weekly

Aged care resident vaccinations



Aged care worker vaccinations

Jurisdictions	Total workers with at least one dose	Workers fully vaccinated	% Workers with at least one dose	% Workers fully vaccinated
NSW	76,590	76,582	99.8%	99.8%
VIC	70,104	70,102	99.0%	99.0%
QLD	48,107	48,102	99.5%	99.5%
SA	27,301	27,289	99.5%	99.5%
WA	24,534	24,529	100.0%	100.0%
TAS	7,598	7,596	100.0%	100.0%
NT	902	902	100.0%	100.0%
ACT	2,946	2,946	100.0%	100.0%
Total	258,082	258,048	99.5%	99.5%

Source: My Aged Care Portal vaccination progress

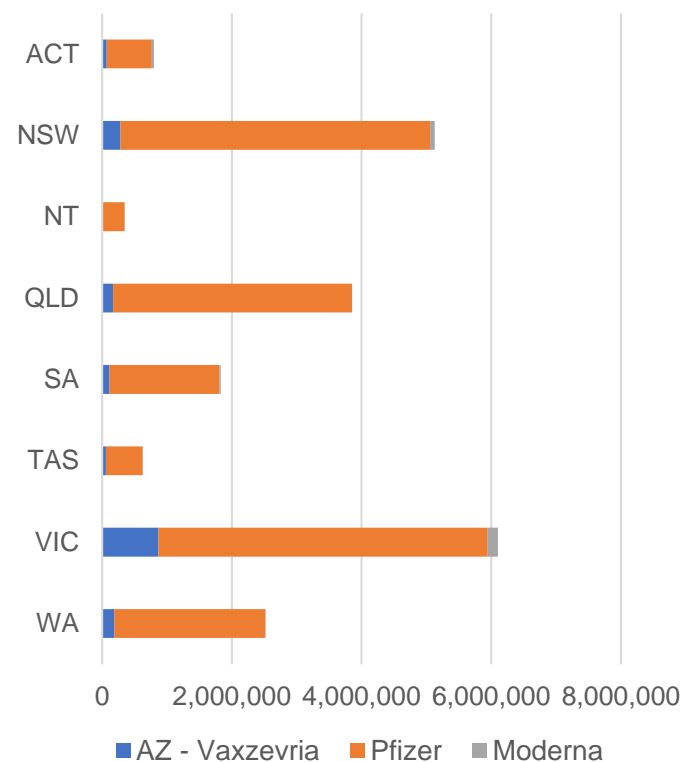
*Status updates are provided by facilities at least once per week. Reporting is updated Monday to Friday to encompass different facility updates being made on different days.

Data is sourced directly from Aged Care Service Providers and is not drawn or closely aligned with data from AIR due to inconsistencies and potential lags in uploading of records.

Data as at:
02 Jun 2022

Jurisdiction administered

Total vaccine doses administered in State and Territory clinics as at 02 June



21,209,223 total vaccine doses administered
in State and Territory clinics as at 02 June
+ **5,794** recorded in the last 24 hours
+ **35,920** recorded in the last 7 days

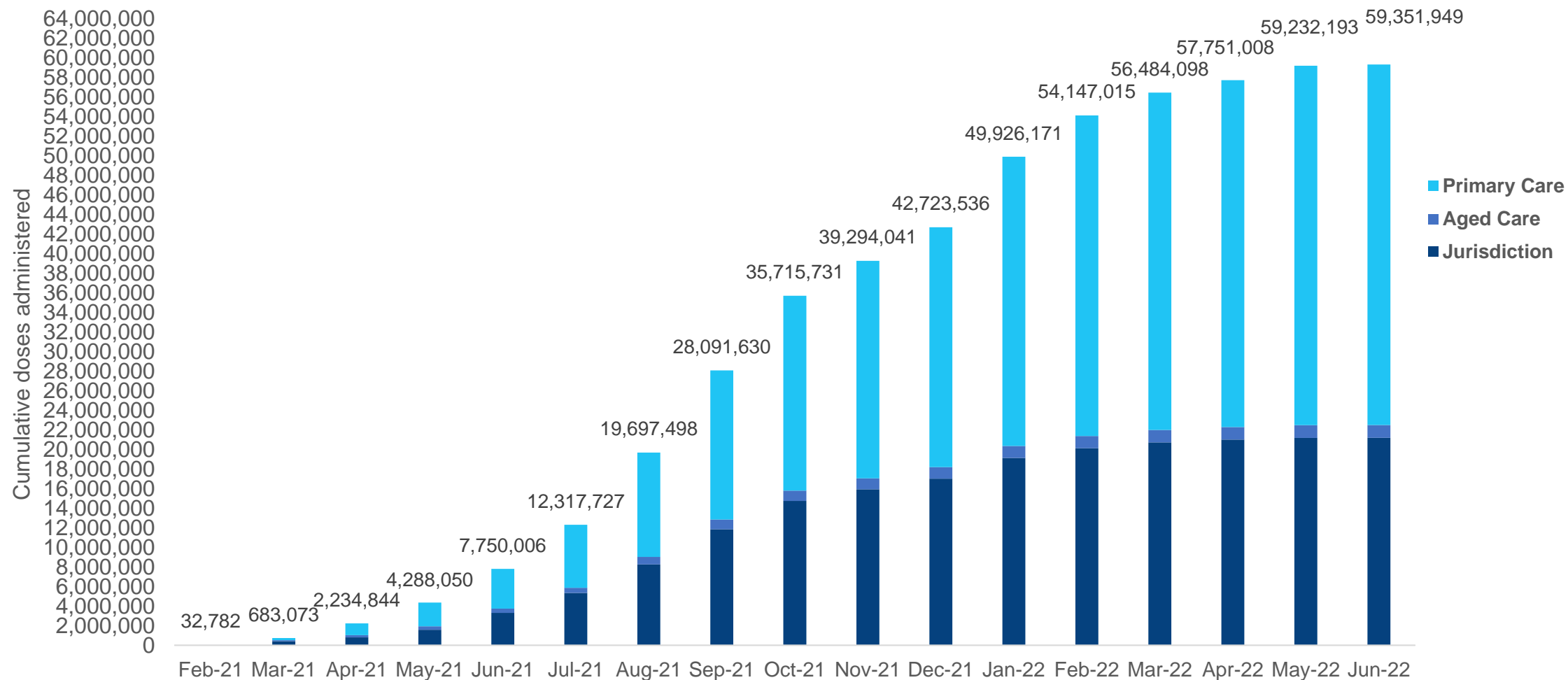


*Sourced from the Australian Immunisation Register. Numbers are calculated as difference in daily cumulative reported numbers to allow for historical corrections.

Source: Australian Immunisation Register

Cumulative doses administered by channel

Data as at:
02 Jun 2022



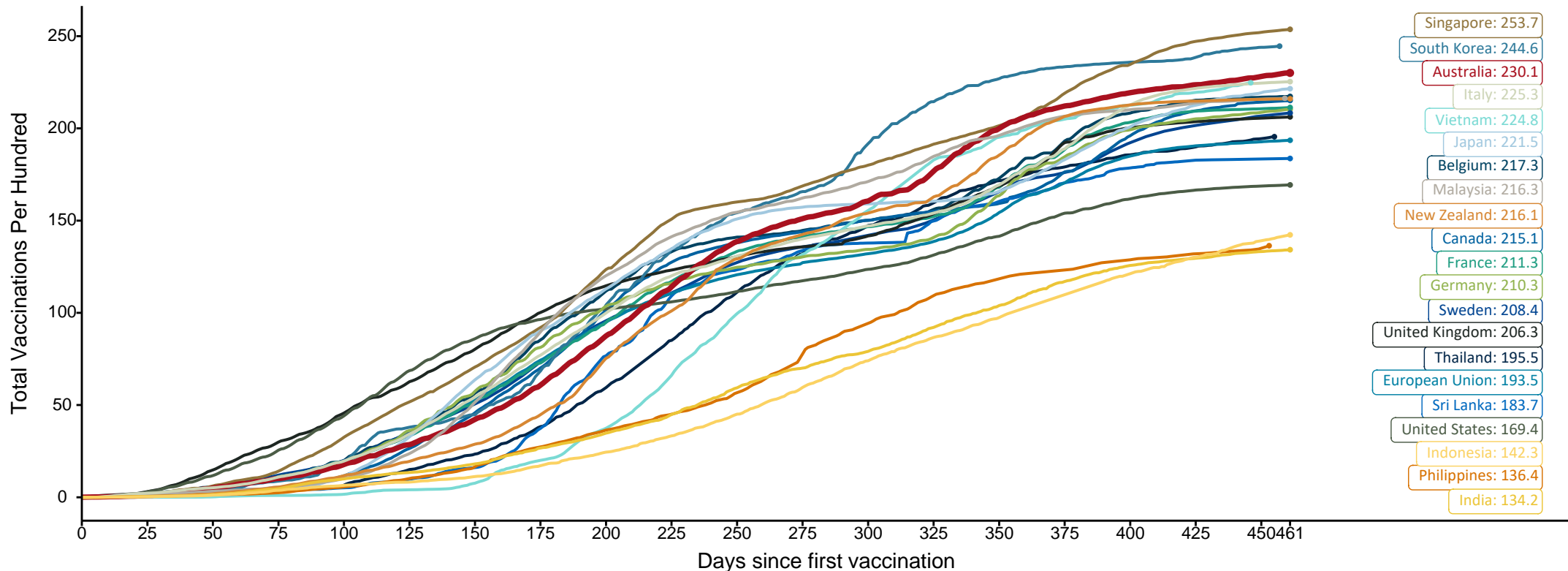
Source: Australian Immunisation Register

Doses at equivalent stages of rollout (Day 461)

Data as at:
29 May 2022
Updated weekly

The x-axis is truncated at the length of Australia's vaccination program. Countries with intermittent reporting have had their doses per 100 imputed to Australia's current stage of rollout. Israel excluded as it is beyond scale of the graph

Cumulative doses administered (29 May): **59,119,148**



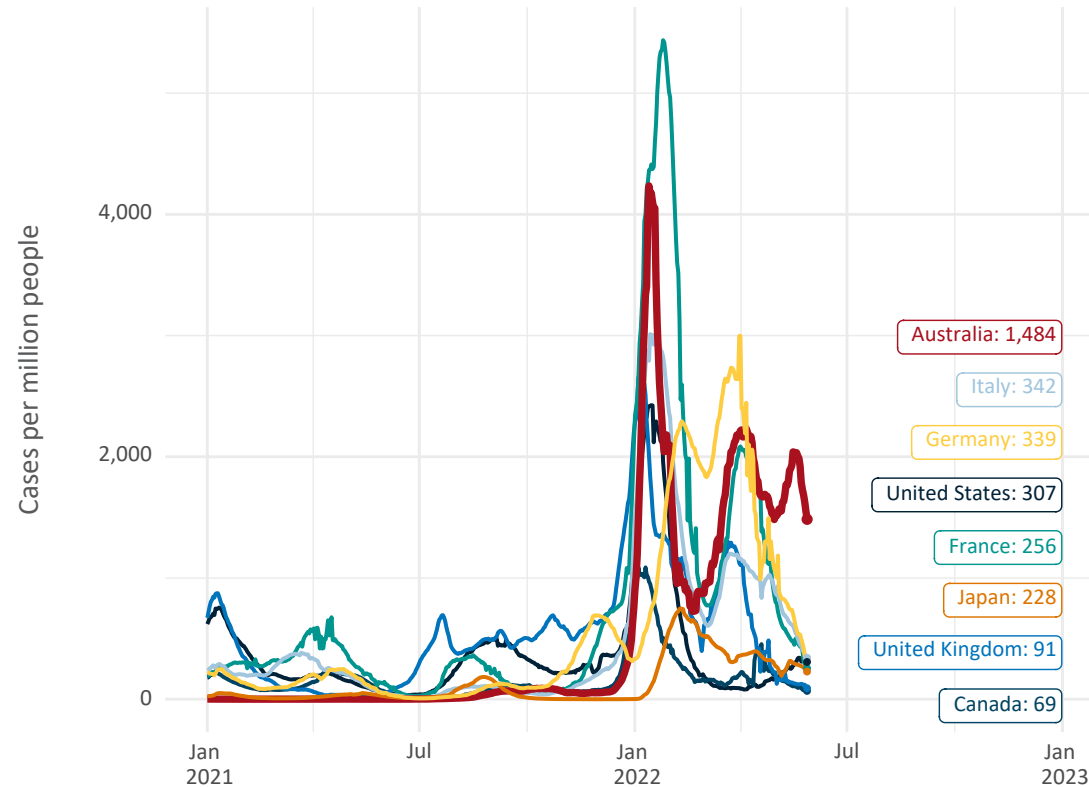
Note: From 11 January 2022, data for Australia includes all doses administered to people 5 and over. Prior to 11 January, data was for 12 and over.
Source: Department of Health (Australia), Our World in Data (international)
Latest data: 29 May

International data – COVID-19

Australia's COVID-19
Vaccine Roadmap

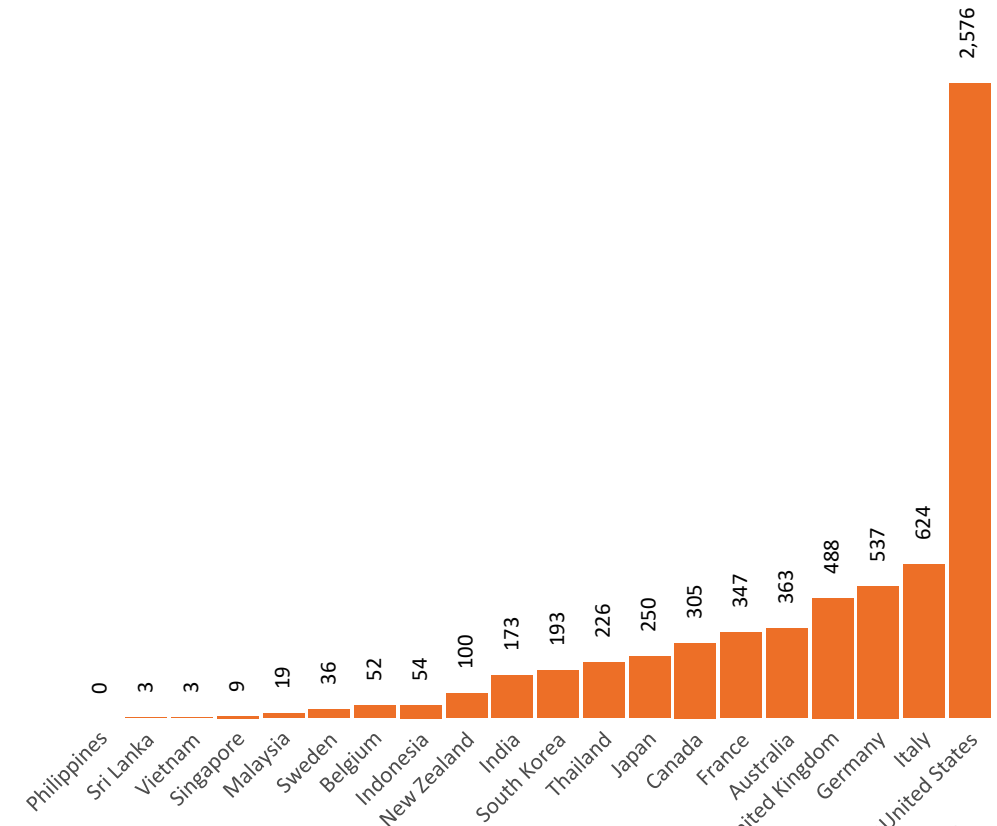
Data as at:
29 May 2022
Updated weekly

New daily cases per million since 2021, Australia and G7 countries
Smoothed - 7 day average



Source: OWID
Data downloaded: 30 May 2022 10:42
Latest data: 28 May 2022

COVID-19 deaths in past 7 days - Australia and select countries



Source: OWID
Data downloaded: 30 May 2022 10:42
Latest data: 28 May 2022