



Australian Government
Operation COVID Shield

COVID-19 Vaccine Roll-out

29 June 2022

Data as at:
28 Jun 2022

Total vaccine doses



60,242,571 total vaccine
doses administered nationally as at 28 June
+39,092 recorded in the last 24 hours



20,109,836

people have had at least one
dose

>95%

of people over the age of 16
have had at least one dose



19,773,266

people are fully vaccinated

>95%

of people over the age of 16 are
fully vaccinated



13,876,936

people over the age of 16
who have received three or
more doses

NSW
18,691,343
(+12,569 daily
increase)

VIC
15,801,332
(+8,663 daily
increase)

QLD
11,390,381
(+8,379 daily
increase)

WA
6,624,644
(+3,680 daily
increase)

TAS
1,367,317
(+1,020 daily
increase)

SA
4,193,288
(+3,312 daily
increase)

ACT
1,578,916
(+1,199 daily
increase)

NT
595,350
(+270 daily
increase)

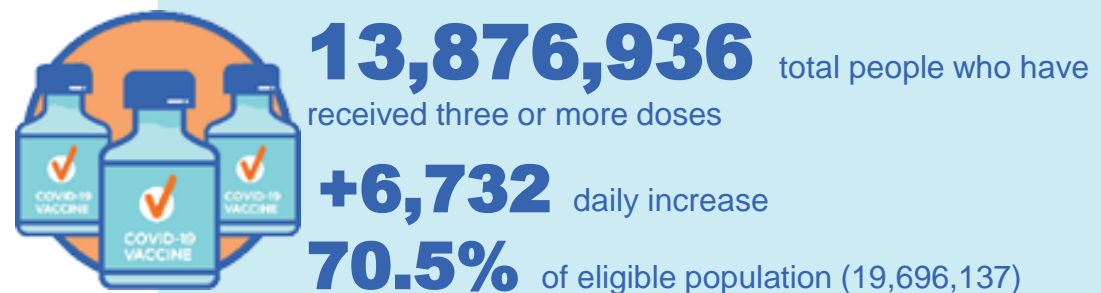
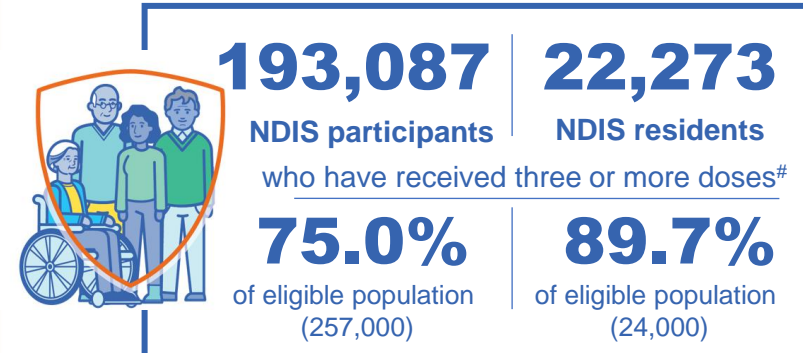
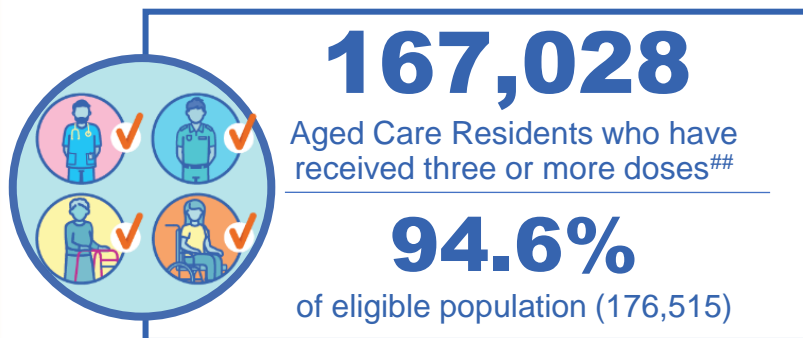
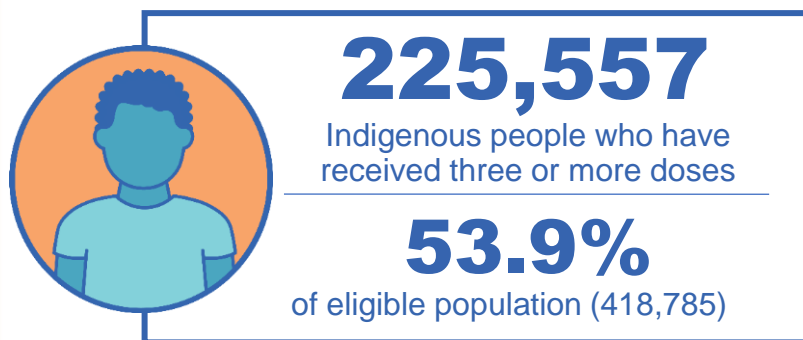
*Administration state breakdown indicates state in which a vaccine was administered

**Overall dose count includes instances of more than three doses per person in a small number of cases.

Source: Australian Immunisation Register

Booster Vaccinations

Data as at:
28 Jun 2022



	Number of People	Daily Increase	% of Eligible
NSW	4,235,046	2,175	68.0%
VIC	3,700,132	1,610	72.8%
QLD	2,404,356	1,381	63.4%
WA	1,702,058	535	82.8%
SA	993,126	677	74.0%
TAS	317,456	169	73.0%
ACT	273,998	113	78.9%
NT	131,416	41	78.1%

*People may belong to multiple groups and could be represented in the above breakdowns multiple times.
NDIS participants data as at 26 June 2022. ## Aged Care Residents data as at 28 June 2022.

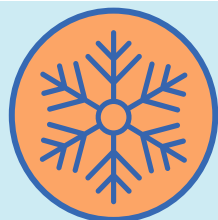
Source: Australian Immunisation Register

119,348 doses administered to persons
residing in other territories or with
missing residential information

Winter / Fourth Doses

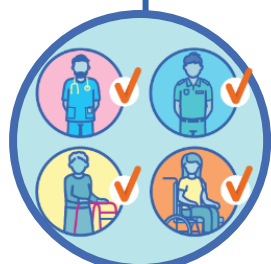
Data as at:
28 Jun 2022

Australia's COVID-19
Vaccine Roadmap



2,310,255 total people (16+) who have received four or more doses

+28,463 daily increase



2,039,311

People aged 65+ who have received
four or more doses

57.6%

of eligible population (3,540,125)



87,314

Aged Care Residents who have
received four or more doses[#]

64.0%

of eligible population (136,350)

	Number of People 16+	Daily Increase
ACT	44,549	455
NSW	747,992	9,330
NT	10,040	139
QLD	438,280	6,162
SA	187,995	2,332
TAS	64,758	766
VIC	575,585	6,250
WA	229,879	2,872

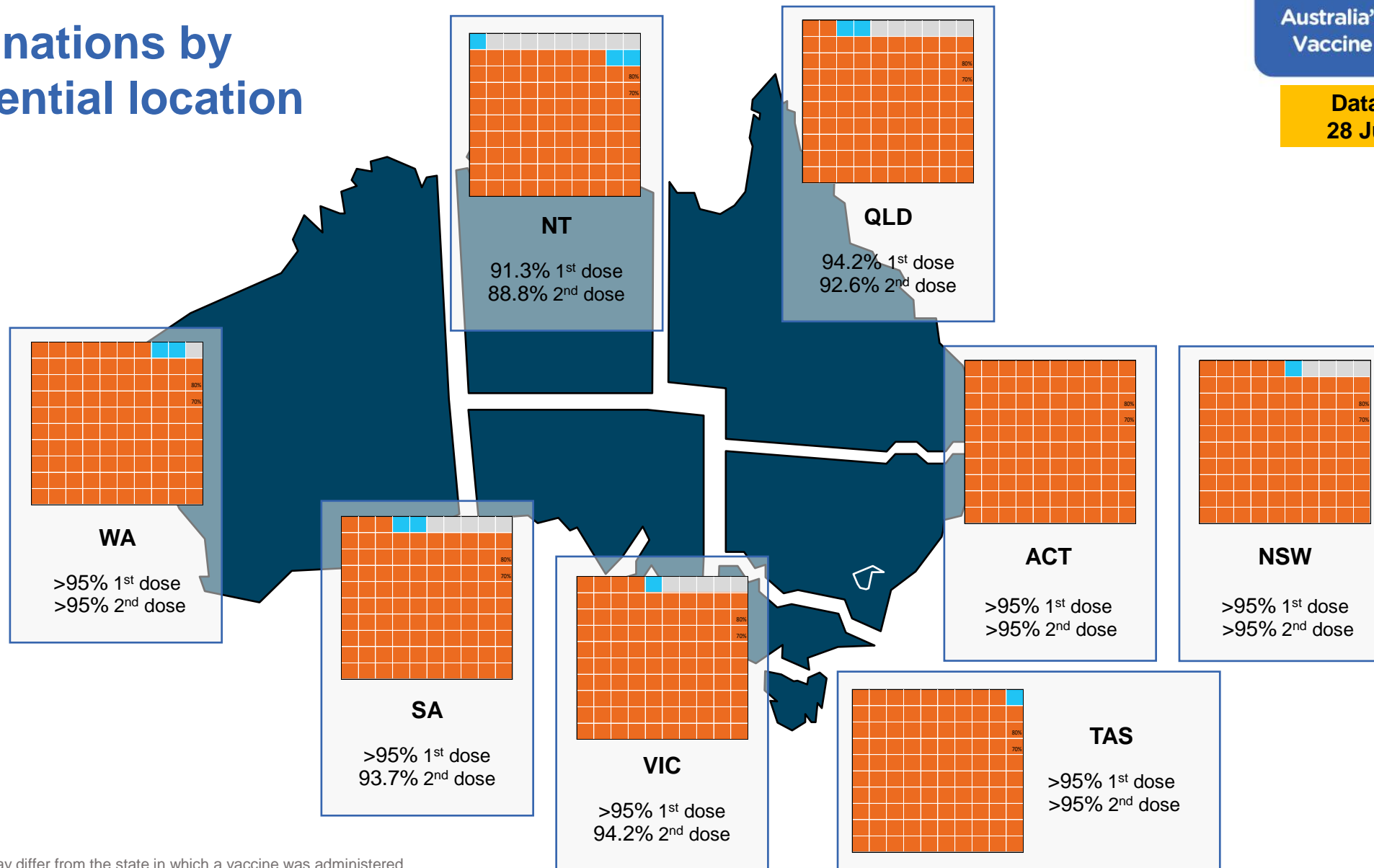
11,177 doses administered to persons
residing in other territories or with
missing residential information

*People become eligible for a winter booster four months after their third dose. Individuals may belong to multiple groups and could be represented in the above multiple times.
[#]Aged Care Residents data as at 27 June 2022.

Source: Australian Immunisation Register

Vaccinations by residential location

Data as at:
28 Jun 2022



*Residential state may differ from the state in which a vaccine was administered

Commonwealth and Jurisdiction vaccine doses administered

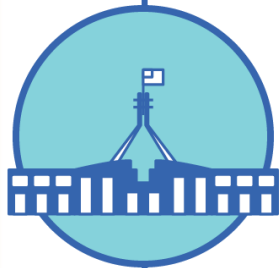
Data as at:
28 Jun 2022



60,242,571 total vaccine
doses administered nationally as at 28 June
+ 39,092 recorded in the last 24 hours



21,298,757
doses administered by state
and territory facilities
+ 3,277
recorded in the last 24 hours



38,943,814
doses administered by
commonwealth facilities
+ 35,815
recorded in the last 24 hours

37,627,134 total vaccine doses
administered in primary care settings
1,316,680 total vaccine doses
administered in aged care and disability
settings

NSW	Jurisdictions	Commonwealth
Cumulative	5,142,574	13,548,769
Daily increase	150	12,419

VIC	Jurisdictions	Commonwealth
Cumulative	6,132,091	9,669,241
Daily increase	777	7,886

QLD	Jurisdictions	Commonwealth
Cumulative	3,861,984	7,528,397
Daily increase	449	7,930

WA	Jurisdictions	Commonwealth
Cumulative	2,532,331	4,092,313
Daily increase	649	3,031

TAS	Jurisdictions	Commonwealth
Cumulative	628,728	738,589
Daily increase	108	912

SA	Jurisdictions	Commonwealth
Cumulative	1,845,905	2,347,383
Daily increase	528	2,784

ACT	Jurisdictions	Commonwealth
Cumulative	807,826	771,090
Daily increase	559	640

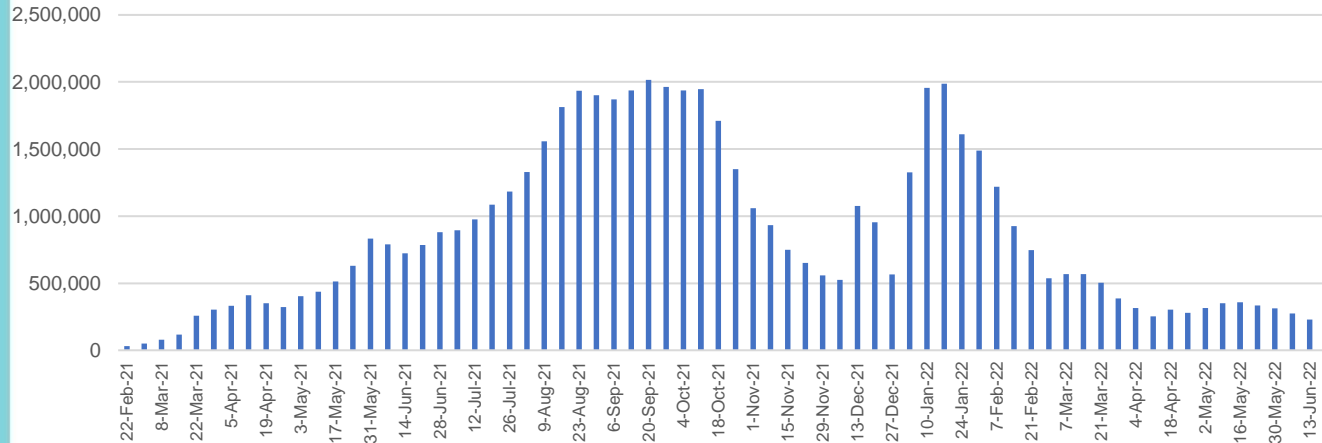
NT	Jurisdictions	Commonwealth
Cumulative	347,318	248,032
Daily increase	57	213

Vaccine milestone charts

Data as at:
28 Jun 2022

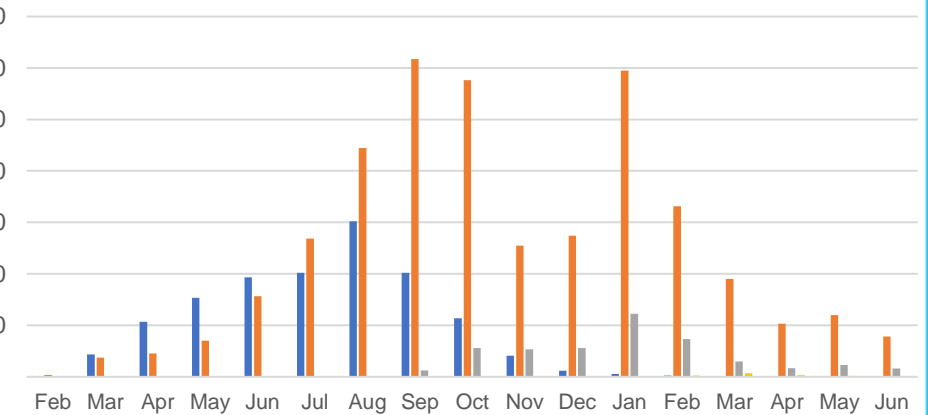
Australia's COVID-19
Vaccine Roadmap

Doses Administered by Week

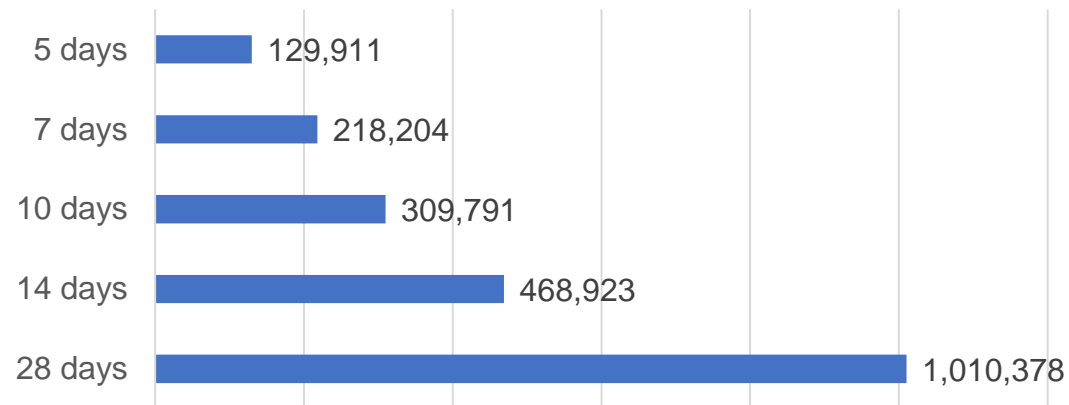


Doses by administration month and vaccine type

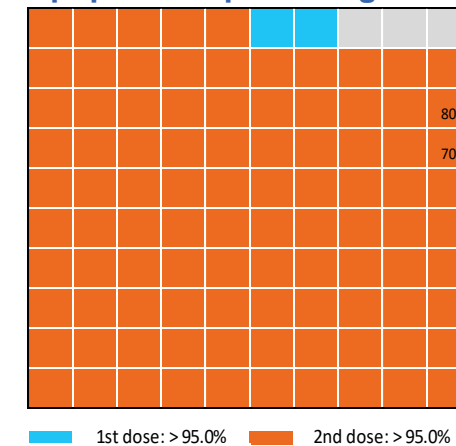
AZ - Vaxzevria Pfizer Moderna Novavax



Doses Reported



Eligible population percentage coverage



*Each square represents 1% of the national population.
Squares are filled as milestones are achieved.

*Sourced from the Australian Immunisation Register.

Doses by age and sex

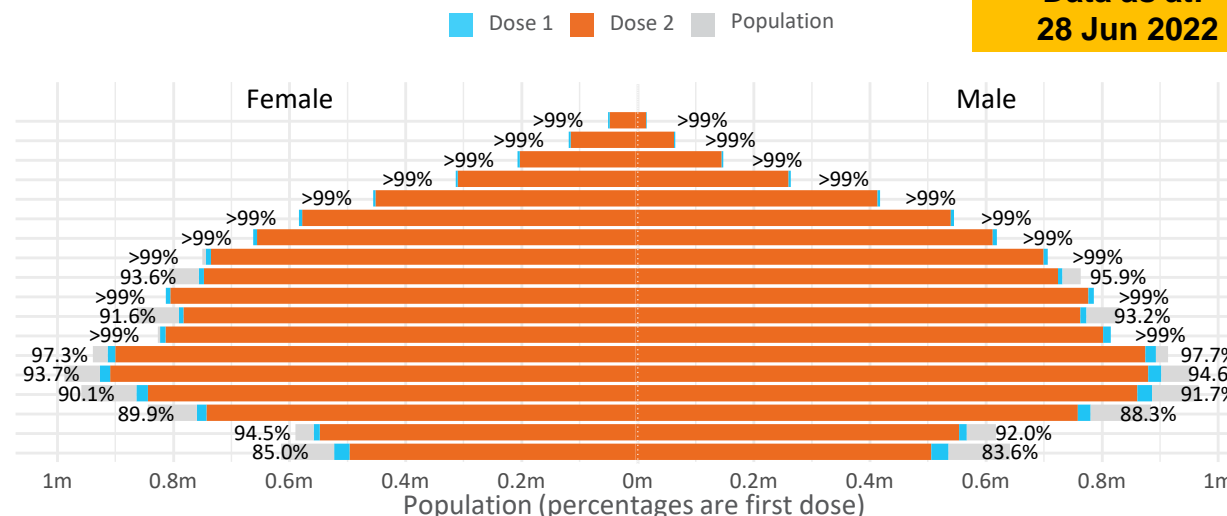
First and second doses by age and sex

Australia's COVID-19
Vaccine Roadmap

Data as at:
28 Jun 2022

Age	Dose 1	Dose 2
95+	65,741 (>99%)	62,287 (>99%)
90-94	182,218 (>99%)	176,725 (>99%)
85-89	351,445 (>99%)	344,689 (>99%)
80-84	572,253 (>99%)	565,124 (>99%)
75-79	865,970 (>99%)	857,511 (>99%)
70-74	1,119,209 (>99%)	1,107,826 (>99%)
65-69	1,271,335 (>99%)	1,256,510 (>99%)
60-64	1,438,699 (>99%)	1,422,199 (99.0%)
55-59	1,475,661 (94.9%)	1,458,955 (93.8%)
50-54	1,585,291 (>99%)	1,568,334 (>99%)
45-49	1,550,660 (92.5%)	1,532,261 (91.4%)
40-44	1,626,088 (>99%)	1,602,073 (98.9%)
35-39	1,793,935 (97.8%)	1,761,686 (96.0%)
30-34	1,819,846 (94.6%)	1,777,783 (92.4%)
25-29	1,744,014 (91.5%)	1,696,140 (89.0%)
20-24	1,531,809 (89.5%)	1,491,527 (87.1%)
16-19	1,115,662 (93.3%)	1,091,636 (91.3%)
12-15	1,049,139 (84.3%)	992,816 (79.8%)

	16+	50+	12-15	5-11
Dose 1	97.53% (20,109,836 doses / 20,619,959 people)	>99% (8,927,822 doses / 8,749,703 people)	84.34% (1,049,139 doses / 1,243,990 people)	52.32% (1,191,145 doses / 2,276,638 people)
Dose 2	95.89% (19,773,266 doses / 20,619,959 people)	>99% (8,820,160 doses / 8,749,703 people)	79.81% (992,816 doses / 1,243,990 people)	39.55% (900,412 doses / 2,276,638 people)

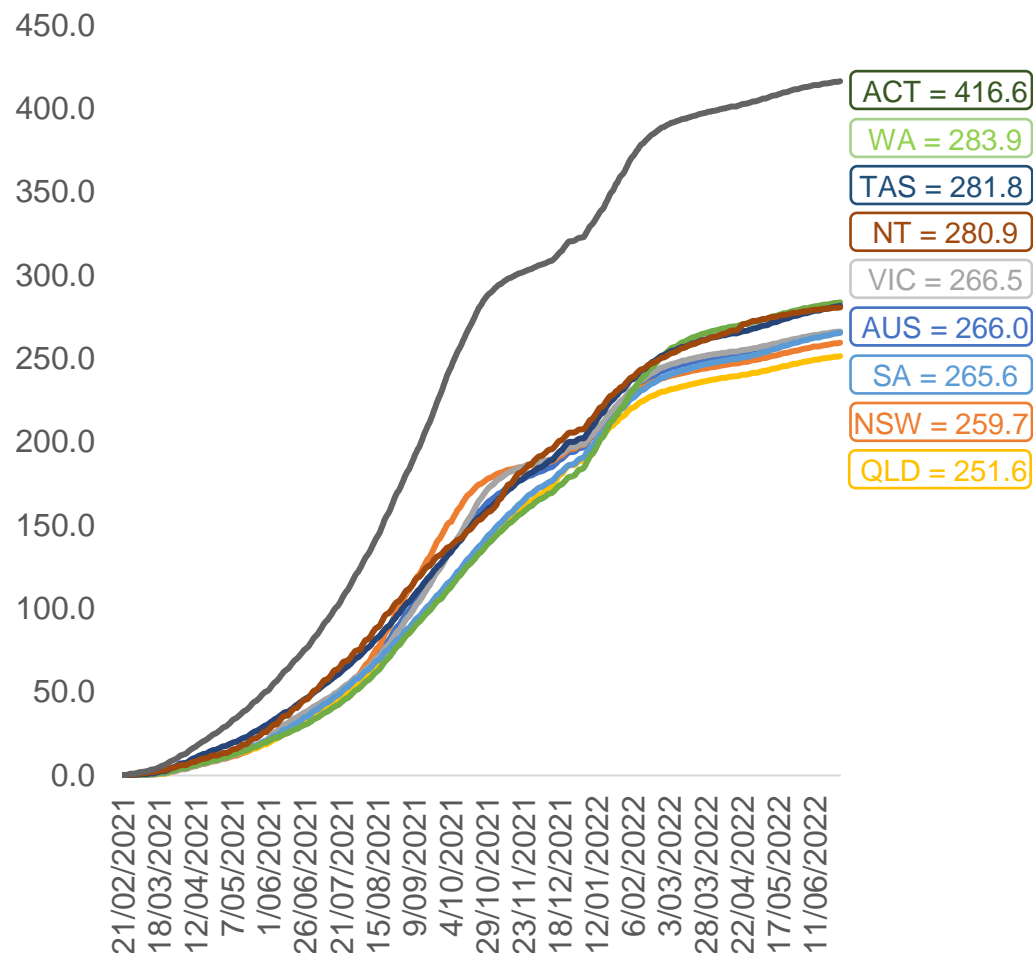


	AUS	ACT	NSW	NT	QLD	SA	TAS	VIC	WA
16 and over - dose 1	20,109,836	353,479	6,342,346	173,917	3,873,721	1,378,985	446,062	5,174,908	2,100,269
16 and over - dose 2	19,773,266	347,741	6,244,142	169,242	3,809,960	1,349,689	437,036	5,096,386	2,069,225
16 and over - population	20,619,959*	344,037	6,565,651	190,571	4,112,707	1,440,400	440,172	5,407,574	2,114,978
16 and over % with dose 1	97.53%	>99%	96.60%	91.26%	94.19%	95.74%	>99%	95.70%	>99%
16 and over % with dose 2	95.89%	>99%	95.10%	88.81%	92.64%	93.70%	>99%	94.25%	97.84%
5 to 11 - dose 1	1,191,145	31,737	355,758	13,139	206,261	83,661	28,443	324,348	140,184
5 to 11 - dose 2	900,412	27,317	275,222	8,788	149,849	63,525	23,138	245,738	102,219
5 to 11 - population	2,276,638	39,789	716,460	24,750	478,731	148,816	45,033	578,499	244,154
5 to 11 % with dose 1	52.32%	79.76%	49.65%	53.09%	43.08%	56.22%	63.16%	56.07%	57.42%
5 to 11 % with dose 2	39.55%	68.65%	38.41%	35.51%	31.30%	42.69%	51.38%	42.48%	41.87%
12 to 15 - dose 1	1,049,139	20,121	322,556	10,747	205,505	68,217	22,863	274,182	115,519
12 to 15 - dose 2	992,816	19,565	308,082	9,699	191,914	64,442	21,741	262,269	106,910
12 to 15 - population	1,243,990	19,693	390,330	13,060	270,146	82,747	26,308	308,611	132,869
12 to 15 % with dose 1	84.34%	>99%	82.64%	82.29%	76.07%	82.44%	86.91%	88.84%	86.94%
12 to 15 % with dose 2	79.81%	>99%	78.93%	74.26%	71.04%	77.88%	82.64%	84.98%	80.46%

*National population will not equal sum of listed jurisdictions due to a small number of people counted in national population residing in some 'other' territories. Sum of state doses will not add to national total as some records are unable to be geocoded to a State or Territory.
Doses sourced from Australian Immunisation Register, population from ABS ERP June 2020

Vaccinations by location

Cumulative total doses administered vs eligible state populations*

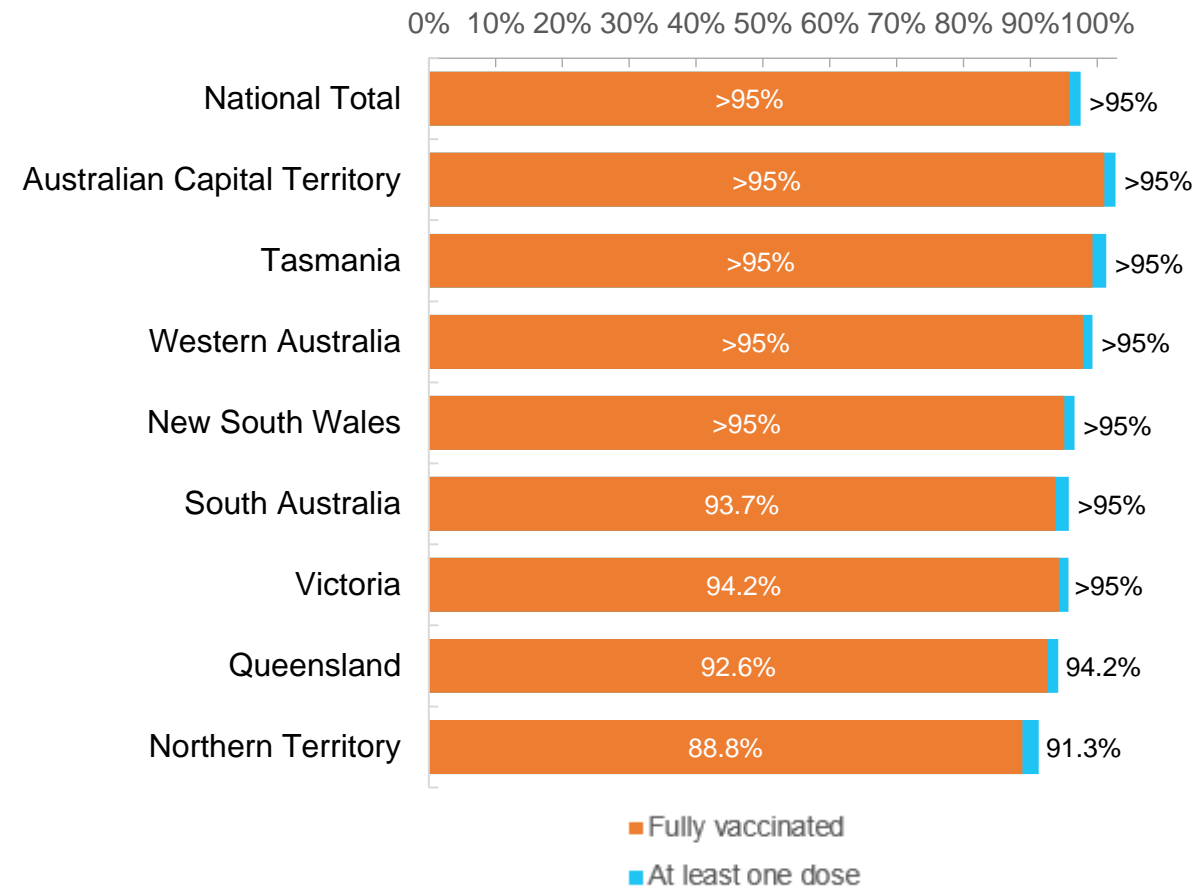


*Not an indication of percentage vaccinated, numbers will exceed 100 due to multiple doses required per person of the population. All doses are included for those aged 12 and above, and are based on vaccination provider location.

Data as at:
28 Jun 2022

Australia's COVID-19
Vaccine Roadmap

First and Second Doses by residential location



Aboriginal and Torres Strait Islander peoples

Number of people vaccinated

Data as at:
28 Jun 2022
Updated weekly

Australia's COVID-19
Vaccine Roadmap



443,113

people over the age of 16
have had at least one dose

85.0%

of people over the age of 16
have had at least one dose



424,811

people over the age of 16
are fully vaccinated

81.5%

of people over the age of 16 are
fully vaccinated



People aged 12 – 15 years

47,872

42,003

67.8%

At least one dose

59.5%

Fully vaccinated

178 Aboriginal community controlled health services (ACCHS)

0#

50

27

44

12

3

21

21

ACT

NSW

NT

QLD

SA

TAS

VIC

WA

Medicare Address State ^{##}	Individuals Dose 1	Individuals Dose 1 %	Individuals Dose 2	Individuals Dose 2 %
Australian Capital Territory	4,796	91.8%	4,674	89.5%
New South Wales	135,834	87.3%	132,792	85.4%
Northern Territory	41,467	89.7%	39,494	85.4%
Queensland	116,516	81.8%	111,181	78.1%
South Australia	20,051	80.5%	18,681	75.0%
Tasmania	13,878	88.8%	13,476	86.2%
Victoria	35,636	90.4%	34,853	88.4%
Western Australia	53,544	86.8%	49,909	80.9%
Unknown/Other Territories	21,391	70.4%	19,751	65.0%
Totals	443,113	85.0%	424,811	81.5%

Source: Australian Immunisation Register

*Identifying as Aboriginal and Torres Strait Islander is optional and the estimated population may be under reported.

**Includes all Aboriginal and Torres Strait Islander peoples who have received a vaccination, not limited to those administered in an ACCHS setting

#ACCHS in the ACT are currently operating as a Commonwealth Vaccine Clinics so not included to avoid double counting

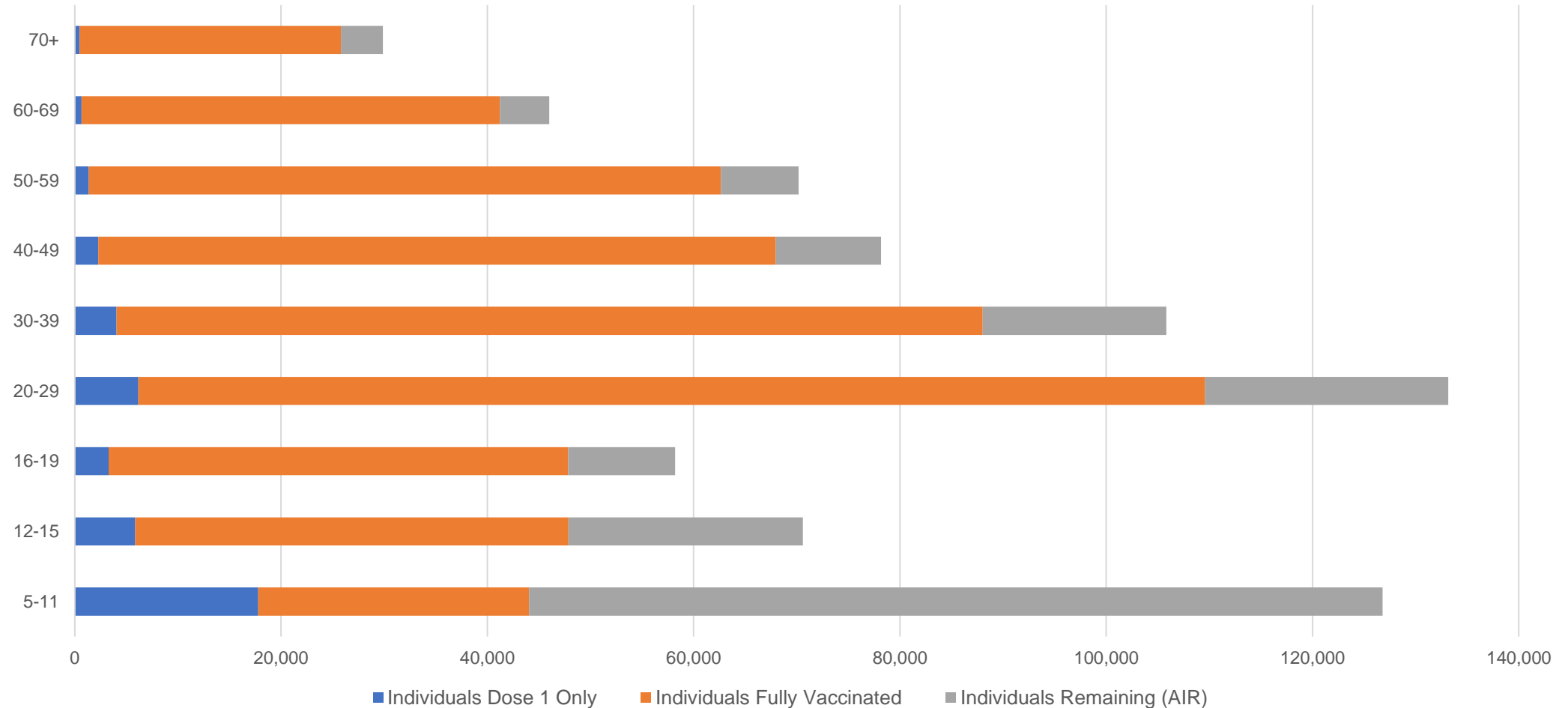
##The above table includes all identified Aboriginal and Torres Strait Islander people who are aged 16 and above by their state of residence.

Aboriginal and Torres Strait Islander peoples

Number of people vaccinated by age

Data as at:
28 Jun 2022
Updated weekly

Australia's COVID-19
Vaccine Roadmap



Source: Australian Immunisation Register

Commonwealth primary care

Data as at:
28 Jun 2022

Australia's COVID-19
Vaccine Roadmap



Primary care vaccine administration sites

5,707	128	178	3,614
GPs	CVCs	ACCHS	Pharmacies



37,627,134 total vaccine doses administered
primary care settings as at 28 June
+ 35,363 recorded in the last 24 hours

Primary care vaccinations by provider type

	Doses administered	Daily increase	7 day increase
General Practice* includes other Commonwealth	30,069,762	24,588	132,717
Pharmacy	7,557,372	10,775	60,591

NSW
12,976,014
(+12,135 daily increase)

VIC
9,336,824
(+7,936 daily increase)

QLD
7,244,242
(+7,918 daily increase)

WA
3,951,637
(+2,975 daily increase)

TAS
717,440
(+907 daily increase)

SA
2,265,752
(+2,767 daily increase)

ACT
594,949
(+585 daily increase)

NT
222,190
(+170 daily increase)

318,086

doses administered to persons
residing in other territories or with
missing residential information

*General practice includes Commonwealth Vaccination Clinics, Aboriginal Community Health Centres, Royal Flying Doctor Service and other Commonwealth vaccination facilities

Source: Australian Immunisation Register

Data as at:
28 Jun 2022

Commonwealth aged care and disability doses administered



1,316,680 (+ 452 last 24 hours)

Total vaccine doses administered in aged care and disability facilities as at 28 June

Number of doses administered as part of the Commonwealth aged and disability care rollout

NSW
572,291
(**<10** daily increase)

VIC
247,568
(**+108** daily increase)

QLD
209,511
(**+96** daily increase)

WA
112,177
(**+82** daily increase)

TAS
23,685
(**+15** daily increase)

SA
86,438
(**<10** daily increase)

ACT
17,922
(**+13** daily increase)

NT
7,713
(**<10** daily increase)

39,375

doses administered to persons
residing in other territories or with
missing residential information

*Sourced from the Australian Immunisation Register. Includes all persons vaccinated at participating residential aged care, disability and related industry settings.

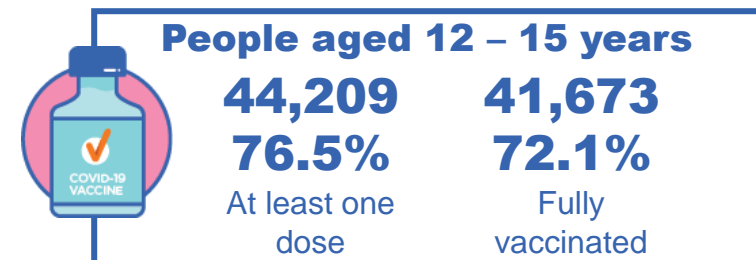
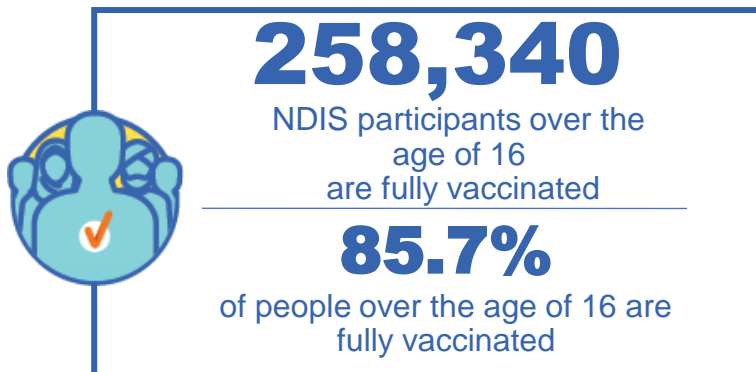
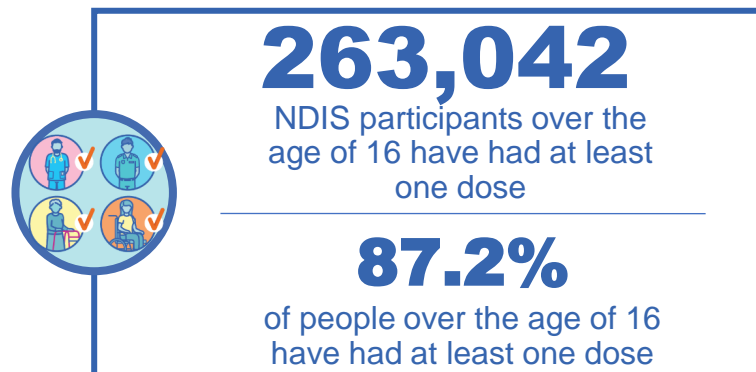
**State level breakdown indicates the residential location and may not align to the state in which the vaccination occurred.

Source: Australian Immunisation Register

National Disability Insurance Scheme (NDIS) reported vaccinations

Data as at:
23 June 2022
Updated weekly

Australia's COVID-19
Vaccine Roadmap



NDIS participant vaccinations

	People aged 16+ with at least one dose	People aged 16+ fully vaccinated	% People aged 16+ with at least one dose	% People aged 16+ fully vaccinated
ACT	4,947	4,883	89.2%	88.0%
NSW	80,502	79,224	87.7%	86.3%
NT	2,294	2,224	78.6%	76.2%
QLD	52,167	51,187	85.6%	84.0%
SA	21,558	21,056	85.1%	83.1%
TAS	6,573	6,421	87.5%	85.4%
VIC	69,861	68,712	88.4%	86.9%
WA	25,140	24,633	88.6%	86.8%
National	263,042	258,340	87.2%	85.7%

Source: Linkage between National Disability Insurance Agency data and the Australian Immunisation Register. Total NDIS participant numbers as at 30 May. Australian Immunisation Register data as at 22 June. Includes all participants regardless of residence type.

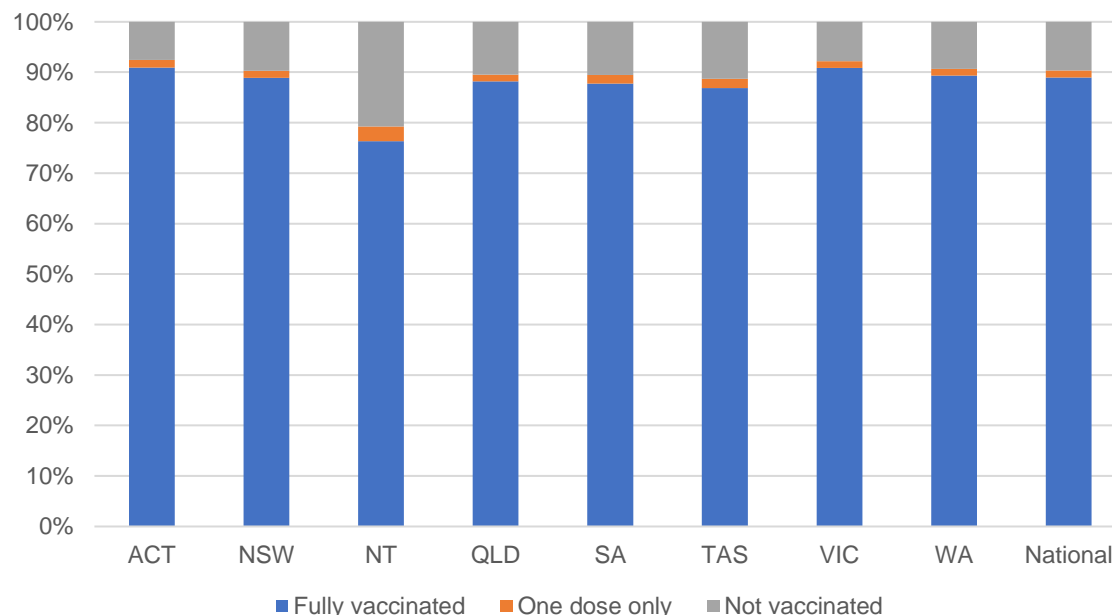
National Disability Insurance Scheme (NDIS) reported vaccinations

Data as at:
23 June 2022
Updated weekly

Australia's COVID-19
Vaccine Roadmap

NATIONAL	Total people with at least one dose	People fully vaccinated	Total number of individuals in cohort	% People with at least one dose	% People fully vaccinated
NDIS participants living in disability accommodation	21,281	20,951	23,469	90.7%	89.3%

NDIS participants in disability and aged care accommodation



Source: Linkage between National Disability Insurance Agency data and the Australian Immunisation Register. Includes participants residing in disability accommodation only.

Source: Total NDIS participant numbers as at 30 May. Participant data as at 22 June. Australian Immunisation Register data as at 22 June. Worker data as at 22 June.

NDIS workforce vaccinations

	NDIS workers with at least one dose	NDIS workers fully vaccinated	% NDIS workers with at least one dose	% NDIS workers fully vaccinated
NSW	127,095	121,926	98.2%	94.2%
VIC	117,929	114,833	98.4%	95.8%
QLD	71,391	70,541	97.9%	96.7%
WA	34,499	33,049	98.9%	94.7%
SA	35,917	34,032	98.6%	93.4%
TAS	10,865	10,650	99.5%	97.5%
ACT	12,333	12,306	99.8%	99.6%
NT	3,968	3,808	99.6%	95.6%
TOTAL	413,997	401,145	98.4%	95.3%

Source: the NDIS Commission has established a requirement for registered NDIS providers who provide intensive disability support services to report on the vaccination status of workers they employ, or otherwise engage, to deliver NDIS-funded supports and services, and who are required to be vaccinated in accordance with in-force state and territory public health orders. The statistics reflect data reported to the NDIS Commission by registered NDIS providers and should be considered indicative and subject to change

Note: Some registered NDIS providers are yet to report on the vaccination status of their workforce. The NDIS Commission is working with those providers around reporting requirements.

Remaining workers not included include those exempt from vaccination requirements, workers whose vaccination status is not yet verified by the provider (such as workers on leave) and provider reporting anomalies.

Residential aged care vaccination rollout

Residential aged care facilities status

176,468

People fully vaccinated

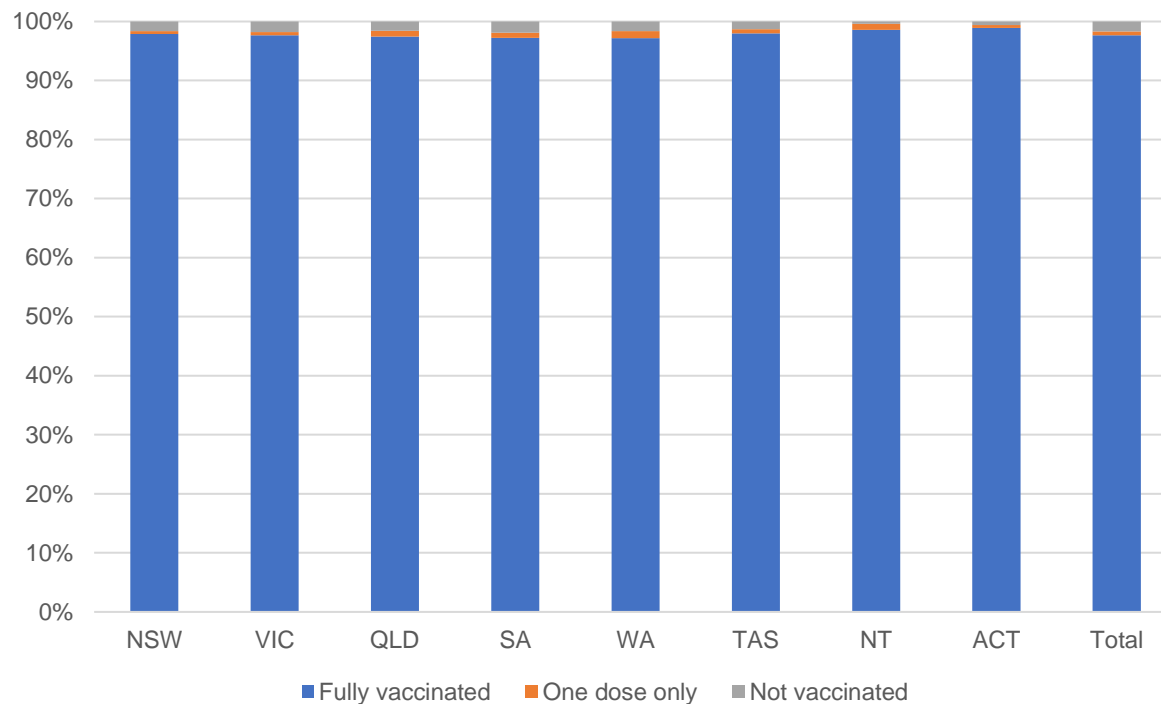
177,715

People with at least one dose

Australia's COVID-19 Vaccine Roadmap

Data as at:
23 June 2022
Updated weekly

Aged care resident vaccinations



Aged care worker vaccinations

Jurisdictions	Total workers with at least one dose	Workers fully vaccinated	% Workers with at least one dose	% Workers fully vaccinated
NSW	77,595	77,467	99.9%	99.7%
VIC	70,793	70,792	99.5%	99.5%
QLD	48,401	48,399	99.7%	99.7%
SA	27,006	26,998	100.0%	100.0%
WA	24,599	24,595	100.0%	100.0%
TAS	7,544	7,544	100.0%	100.0%
NT	934	934	100.0%	100.0%
ACT	2,921	2,921	100.0%	100.0%
Total	259,793	259,650	99.8%	99.7%

Source: Residential aged care provider self-reported COVID-19 vaccination information

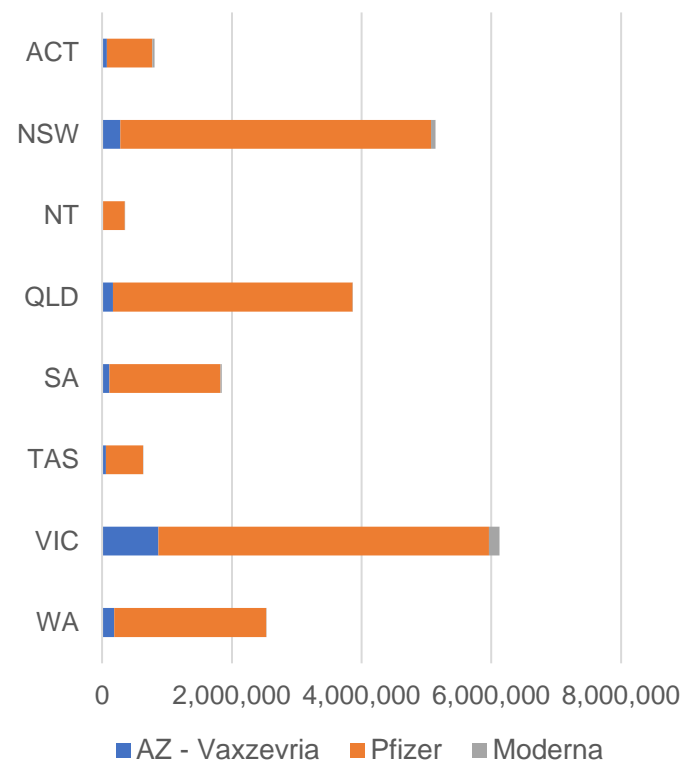
*Status updates are provided by facilities at least once per week. Reporting is updated Monday to Friday to encompass different facility updates being made on different days.

Data is sourced directly from Aged Care Service Providers and is not drawn or closely aligned with data from AIR due to inconsistencies and potential lags in uploading of records.

Data as at:
28 Jun 2022

Jurisdiction administered

Total vaccine doses administered in State and Territory clinics as at 28 June



21,298,757 total vaccine doses administered
in State and Territory clinics as at 28 June
+ **3,277** recorded in the last 24 hours
+ **22,204** recorded in the last 7 days

NSW
5,142,574
(+150 daily
increase)

VIC
6,132,091
(+777 daily
increase)

QLD
3,861,984
(+449 daily
increase)

WA
2,532,331
(+649 daily
increase)

TAS
628,728
(+108 daily
increase)

SA
1,845,905
(+528 daily
increase)

ACT
807,826
(+559 daily
increase)

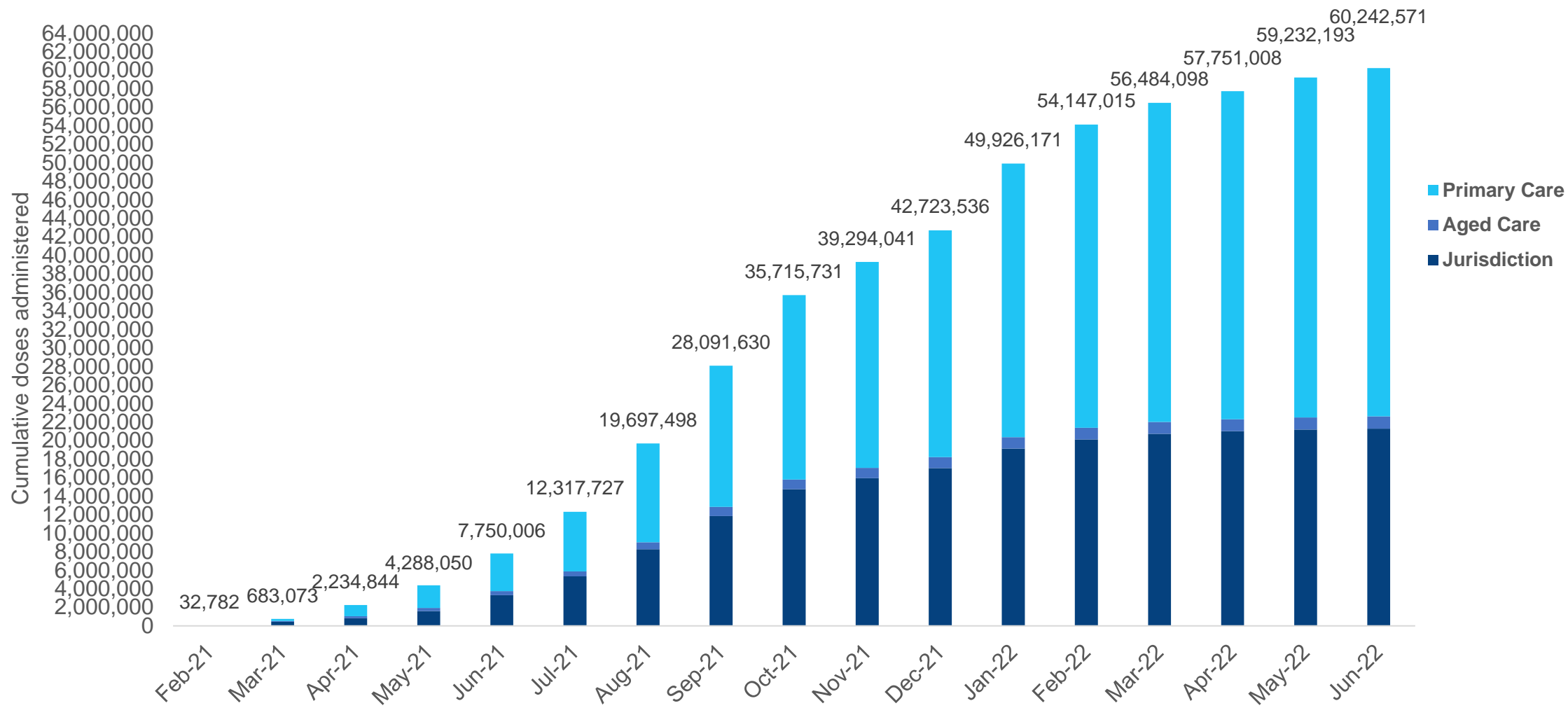
NT
347,318
(+57 daily
increase)

*Sourced from the Australian Immunisation Register. Numbers are calculated as difference in daily cumulative reported numbers to allow for historical corrections.

Source: Australian Immunisation Register

Cumulative doses administered by channel

Data as at:
28 Jun 2022

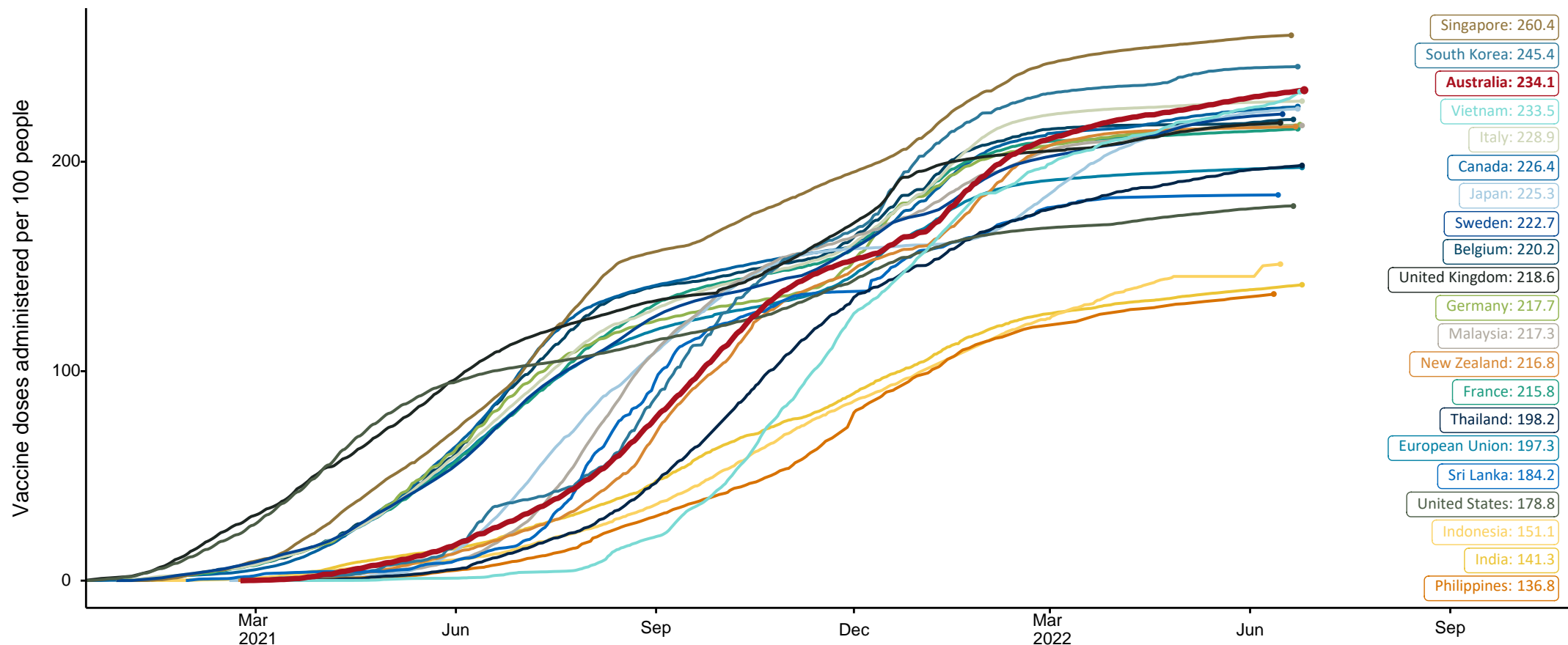


Source: Australian Immunisation Register

COVID-19 vaccine doses per 100, Australia and select countries

Data as at:
26 June 2022
Updated weekly

Australia's COVID-19
Vaccine Roadmap

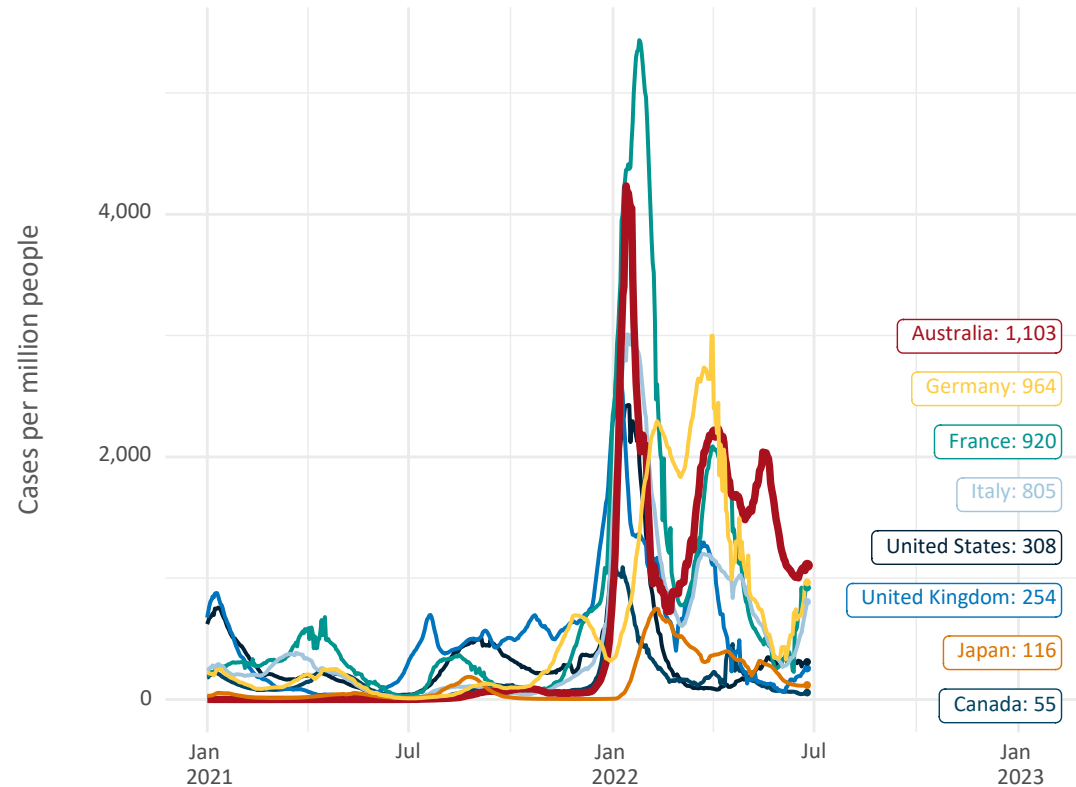


Note: From 11 January 2022, data for Australia includes all doses administered to people 5 and over. Prior to 11 January, data was for 12 and over.
Source: Department of Health (Australia), Our World in Data (international)
Latest data: 26 June

International data – COVID-19

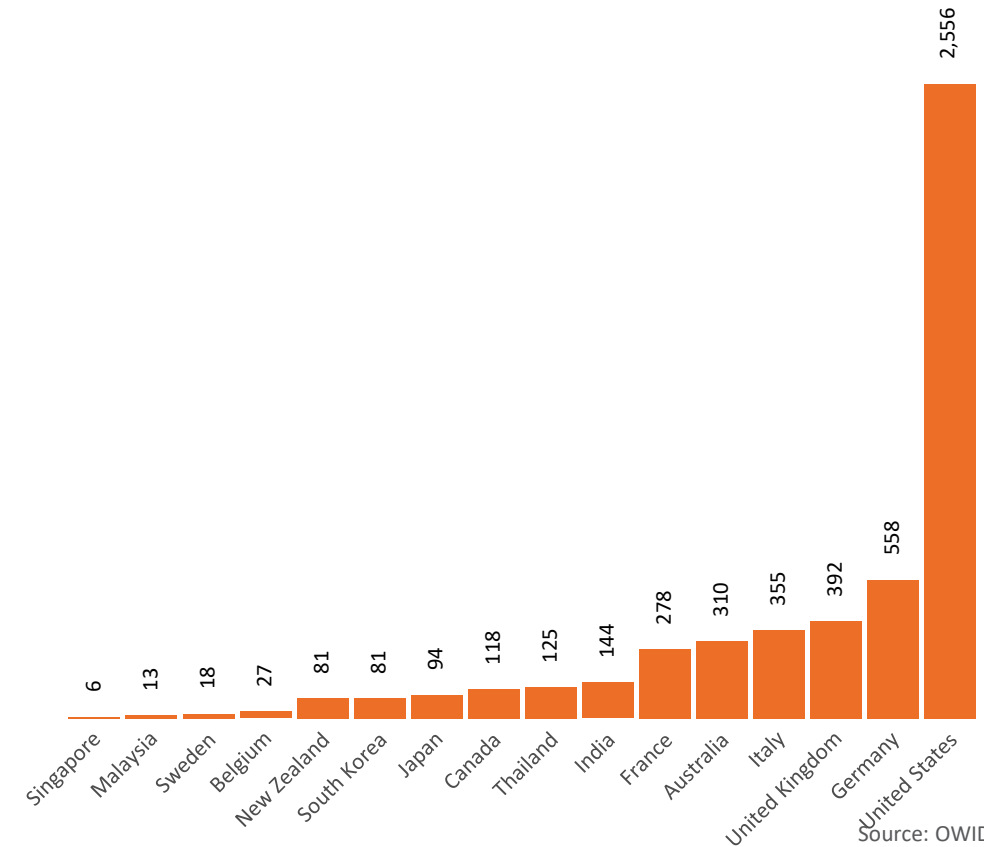
Data as at:
26 June 2022
Updated weekly

New daily cases per million since 2021, Australia and G7 countries
Smoothed - 7 day average



Source: OWID
Data downloaded: 27 Jun 2022 08:54
Latest data: 25 Jun 2022

COVID-19 deaths in past 7 days - Australia and select countries



Source: OWID
Data downloaded: 27 Jun 2022 08:54
Latest data: 25 Jun 2022