




Australian Government
Operation COVID Shield

COVID-19 Vaccine Roll-out

28 June 2022


Data as at:
27 Jun 2022

Total vaccine doses



20,108,188
people have had at least one dose

>95%
of people over the age of 16
have had at least one dose



19,771,712
people are fully vaccinated

>95%
of people over the age of 16 are
fully vaccinated



13,870,204
people over the age of 16
who have received three or
more doses



60,203,479 total vaccine doses administered nationally as at 27 June

+34,262 recorded in the last 24 hours

NSW
18,678,774
(+11,719 daily increase)

VIC
15,792,669
(+7,676 daily increase)

QLD
11,382,002
(+6,123 daily increase)

WA
6,620,964
(+3,373 daily increase)

TAS
1,366,297
(+1,066 daily increase)

SA
4,189,976
(+2,987 daily increase)

ACT
1,577,717
(+1,132 daily increase)

NT
595,080
(+186 daily increase)

*Administration state breakdown indicates state in which a vaccine was administered

**Overall dose count includes instances of more than three doses per person in a small number of cases.

Source: Australian Immunisation Register

Booster Vaccinations

Data as at:
27 Jun 2022



225,392

Indigenous people who have received three or more doses

53.8%

of eligible population (418,581)



167,056

Aged Care Residents who have received three or more doses##

94.7%

of eligible population (176,468)



192,543

NDIS participants

who have received three or more doses#

75.0%

of eligible population (256,000)

22,223

NDIS residents

who have received three or more doses#

89.6%

of eligible population (24,000)



13,870,204

total people who have received three or more doses

+6,504 daily increase

70.4% of eligible population (19,692,119)

	Number of People	Daily Increase	% of Eligible
NSW	4,232,871	2,308	68.0%
VIC	3,698,522	1,522	72.8%
QLD	2,402,975	1,202	63.4%
WA	1,701,523	460	82.8%
SA	992,449	660	74.0%
TAS	317,287	143	72.9%
ACT	273,885	140	78.9%
NT	131,375	45	78.1%

*People may belong to multiple groups and could be represented in the above breakdowns multiple times.

NDIS participants data as at 22 June 2022.

Aged Care Residents data as at 27 June 2022.

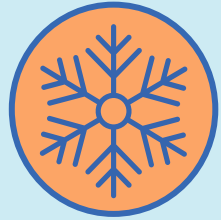
Source: Australian Immunisation Register

119,317

doses administered to persons residing in other territories or with missing residential information

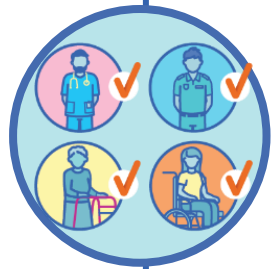
Data as at:
27 Jun 2022

Winter / Fourth Doses



2,281,792 total people (16+) who have received four or more doses

+ 23,856 daily increase



2,014,748
People aged 65+ who have received
four or more doses

57.2%

of eligible population (3,524,398)



86,162

Aged Care Residents who have
received four or more doses[#]

63.2%

of eligible population (136,269)

	Number of People 16+	Daily Increase
ACT	44,094	417
NSW	738,662	8,224
NT	9,901	102
QLD	432,118	4,246
SA	185,663	2,169
TAS	63,992	842
VIC	569,335	5,149
WA	227,007	2,593

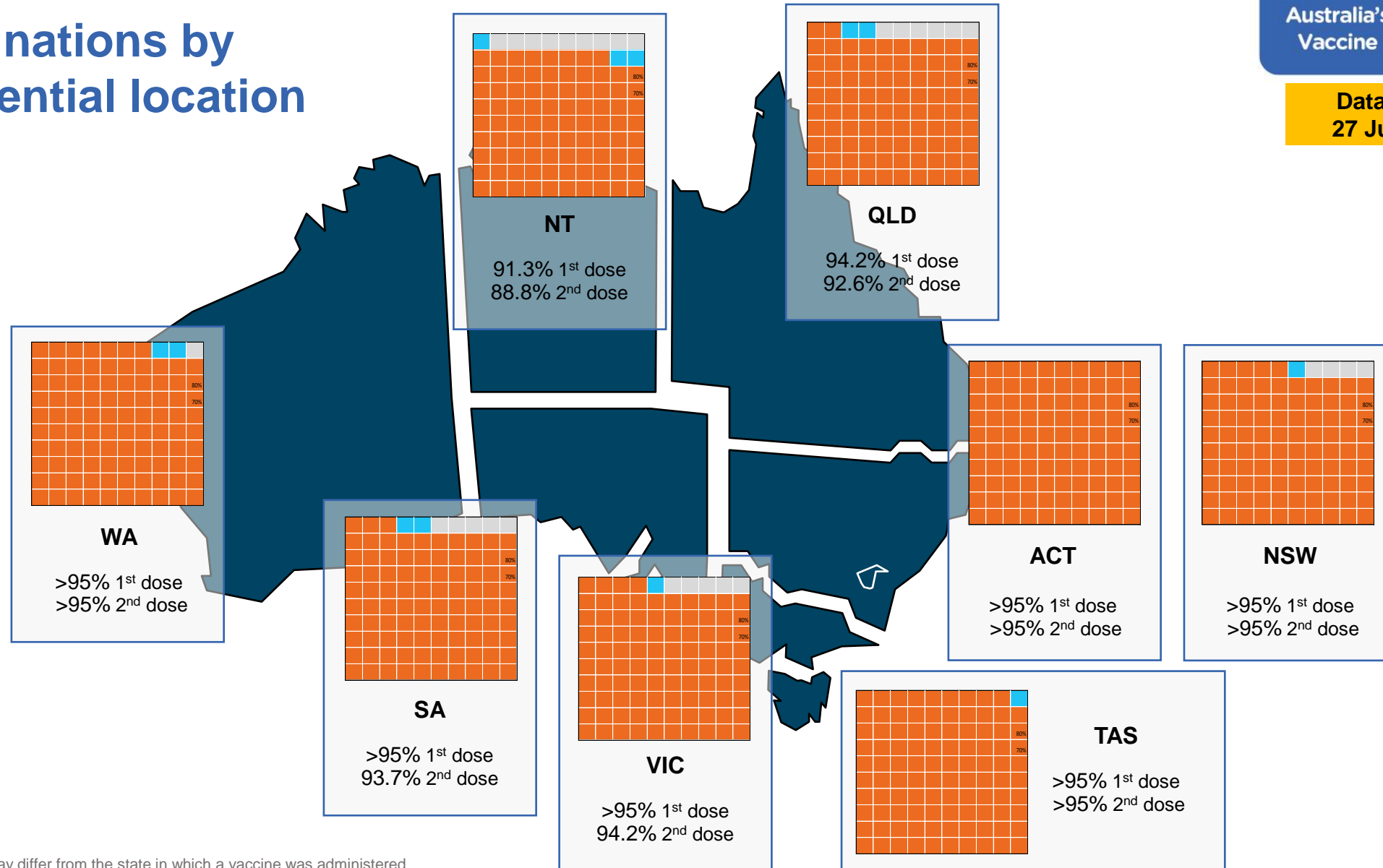
11,020 doses administered to persons
residing in other territories or with
missing residential information

*People become eligible for a winter booster four months after their third dose. Individuals may belong to multiple groups and could be represented in the above multiple times.
#Aged Care Residents data as at 26 June 2022

Source: Australian Immunisation Register

Data as at:
27 Jun 2022

Vaccinations by residential location



*Residential state may differ from the state in which a vaccine was administered

Commonwealth and Jurisdiction vaccine doses administered

Data as at:
27 Jun 2022



60,203,479 total vaccine doses administered nationally as at 27 June

+ 34,262 recorded in the last 24 hours

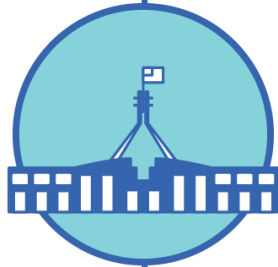


21,295,480

doses administered by state and territory facilities

+ 3,014

recorded in the last 24 hours



38,907,999

doses administered by commonwealth facilities

+ 31,248

recorded in the last 24 hours

37,591,771 total vaccine doses administered in primary care settings

1,316,228 total vaccine doses administered in aged care and disability settings

NSW	Jurisdictions	Commonwealth
Cumulative	5,142,424	13,536,350
Daily increase	503	11,216

VIC	Jurisdictions	Commonwealth
Cumulative	6,131,314	9,661,355
Daily increase	739	6,937

QLD	Jurisdictions	Commonwealth
Cumulative	3,861,535	7,520,467
Daily increase	196	5,927

WA	Jurisdictions	Commonwealth
Cumulative	2,531,682	4,089,282
Daily increase	407	2,966

TAS	Jurisdictions	Commonwealth
Cumulative	628,620	737,677
Daily increase	93	973

SA	Jurisdictions	Commonwealth
Cumulative	1,845,377	2,344,599
Daily increase	469	2,518

ACT	Jurisdictions	Commonwealth
Cumulative	807,267	770,450
Daily increase	545	587

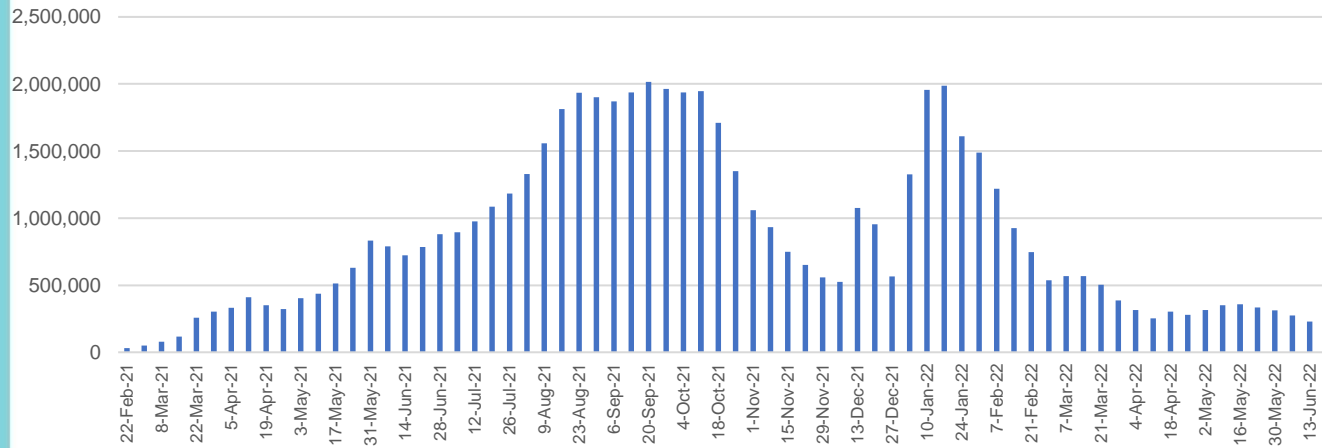
NT	Jurisdictions	Commonwealth
Cumulative	347,261	247,819
Daily increase	62	124

Vaccine milestone charts

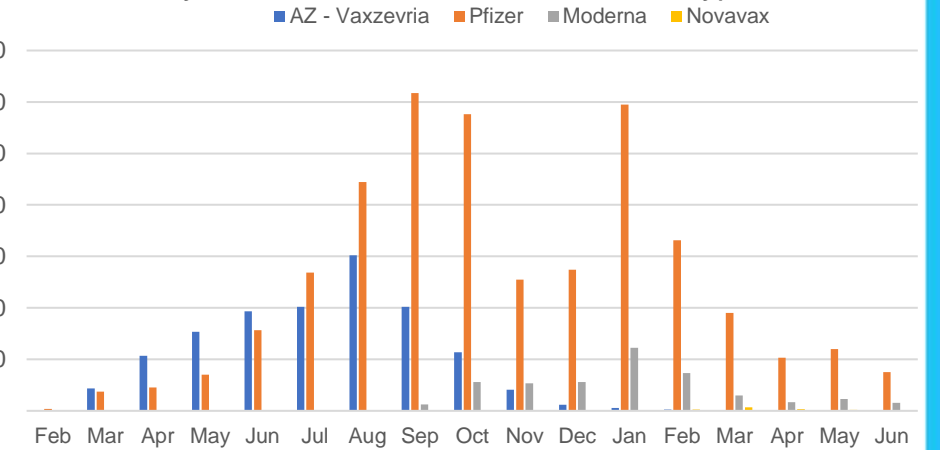
Data as at:
27 Jun 2022

Australia's COVID-19
Vaccine Roadmap

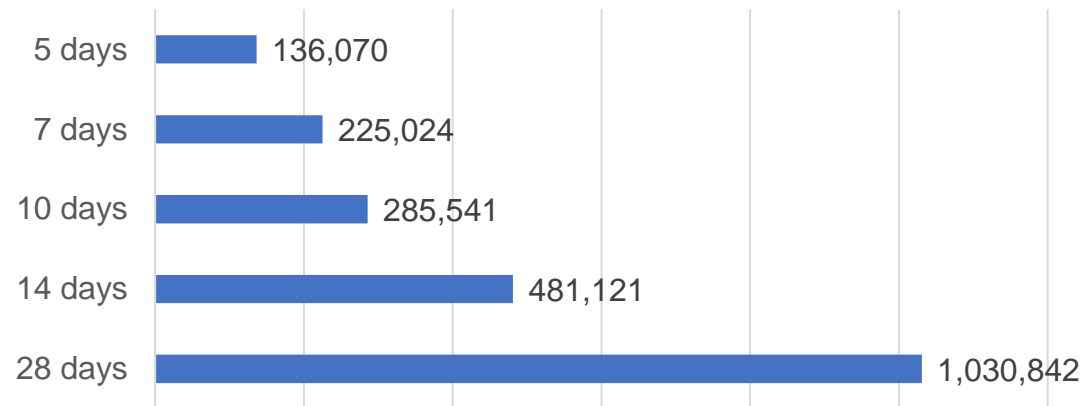
Doses Administered by Week



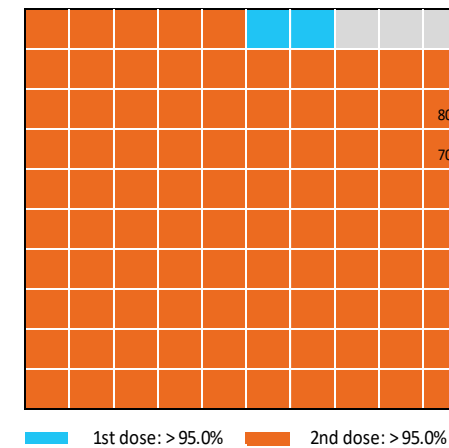
Doses by administration month and vaccine type



Doses Reported



Eligible population percentage coverage



*Each square represents 1% of the national population. Squares are filled as milestones are achieved.

*Sourced from the Australian Immunisation Register.

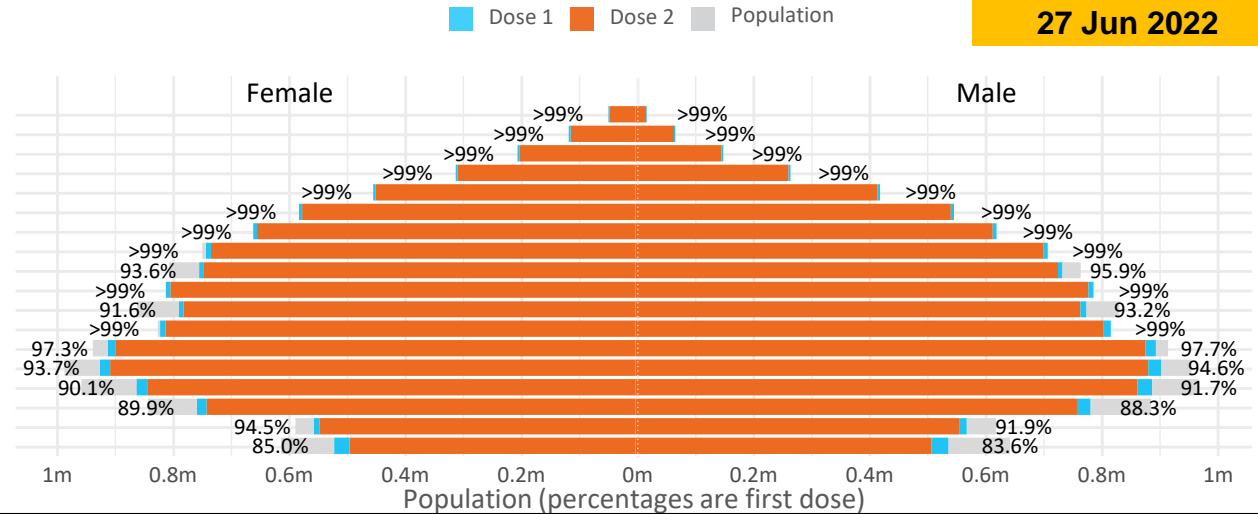
Doses by age and sex

First and second doses by age and sex

	16+	50+	12-15	5-11
Dose 1	97.52% (20,108,188 doses / 20,619,959 people)	>99% (8,926,624 doses / 8,749,703 people)	84.34% (1,049,210 doses / 1,243,990 people)	52.33% (1,191,370 doses / 2,276,638 people)
Dose 2	95.89% (19,771,712 doses / 20,619,959 people)	>99% (8,818,971 doses / 8,749,703 people)	79.82% (992,892 doses / 1,243,990 people)	39.52% (899,748 doses / 2,276,638 people)

Data as at:
27 Jun 2022

Age	Dose 1	Dose 2
95+	65,680 (>99%)	62,223 (>99%)
90-94	182,134 (>99%)	176,645 (>99%)
85-89	351,344 (>99%)	344,583 (>99%)
80-84	572,124 (>99%)	564,984 (>99%)
75-79	865,724 (>99%)	857,266 (>99%)
70-74	1,119,170 (>99%)	1,107,791 (>99%)
65-69	1,271,157 (>99%)	1,256,336 (>99%)
60-64	1,438,536 (>99%)	1,422,051 (99.0%)
55-59	1,475,621 (94.9%)	1,458,918 (93.8%)
50-54	1,585,134 (>99%)	1,568,174 (>99%)
45-49	1,550,663 (92.5%)	1,532,282 (91.4%)
40-44	1,625,920 (>99%)	1,601,925 (98.9%)
35-39	1,793,895 (97.8%)	1,761,652 (96.0%)
30-34	1,819,756 (94.6%)	1,777,688 (92.4%)
25-29	1,744,111 (91.5%)	1,696,250 (89.0%)
20-24	1,531,769 (89.5%)	1,491,523 (87.1%)
16-19	1,115,450 (93.3%)	1,091,421 (91.3%)
12-15	1,049,210 (84.3%)	992,892 (79.8%)

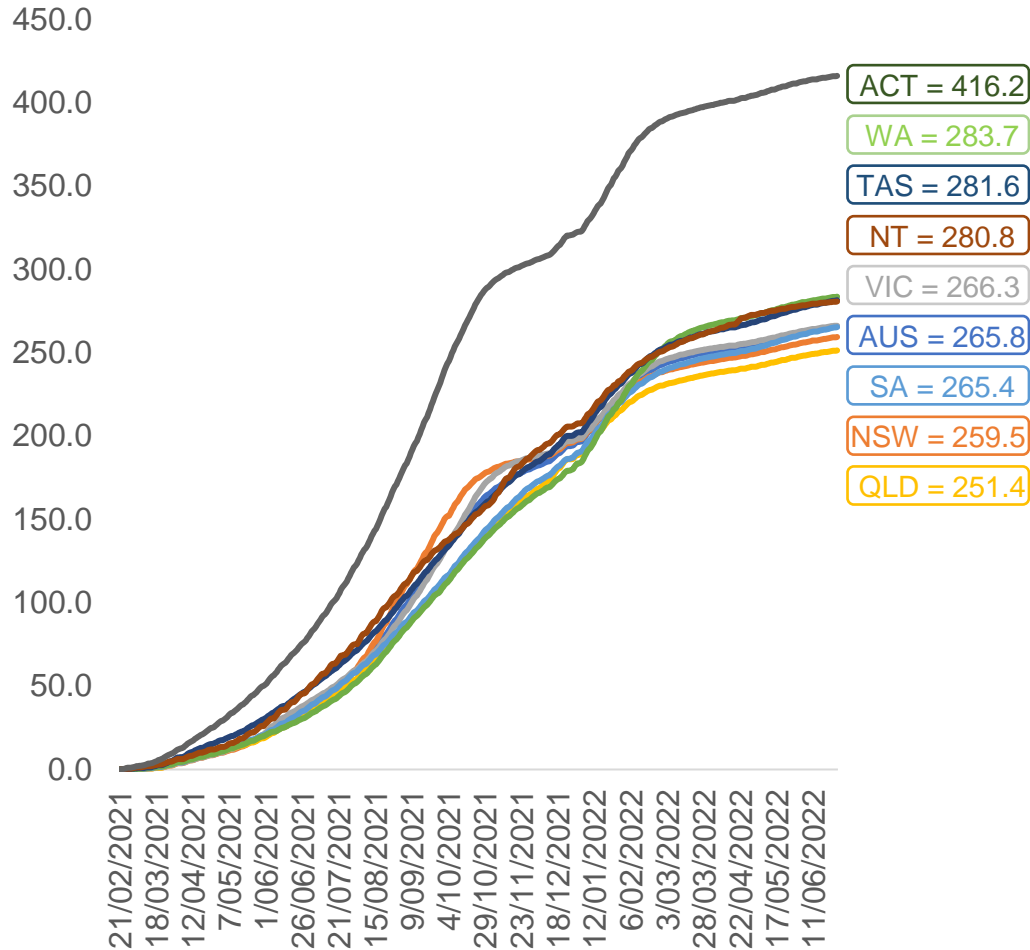


	AUS	ACT	NSW	NT	QLD	SA	TAS	VIC	WA
16 and over - dose 1	20,108,188	353,453	6,341,917	173,953	3,873,193	1,378,882	446,022	5,174,429	2,100,106
16 and over - dose 2	19,771,712	347,724	6,243,782	169,279	3,809,436	1,349,591	436,994	5,095,928	2,069,055
16 and over - population	20,619,959*	344,037	6,565,651	190,571	4,112,707	1,440,400	440,172	5,407,574	2,114,978
16 and over % with dose 1	97.52%	>99%	96.59%	91.28%	94.18%	95.73%	>99%	95.69%	>99%
16 and over % with dose 2	95.89%	>99%	95.10%	88.83%	92.63%	93.70%	>99%	94.24%	97.83%
5 to 11 - dose 1	1,191,370	31,746	355,849	13,129	206,277	83,694	28,436	324,372	140,229
5 to 11 - dose 2	899,748	27,317	275,031	8,776	149,690	63,497	23,110	245,532	102,173
5 to 11 - population	2,276,638	39,789	716,460	24,750	478,731	148,816	45,033	578,499	244,154
5 to 11 % with dose 1	52.33%	79.79%	49.67%	53.05%	43.09%	56.24%	63.14%	56.07%	57.43%
5 to 11 % with dose 2	39.52%	68.65%	38.39%	35.46%	31.27%	42.67%	51.32%	42.44%	41.85%
12 to 15 - dose 1	1,049,210	20,121	322,588	10,748	205,556	68,203	22,871	274,183	115,513
12 to 15 - dose 2	992,892	19,566	308,133	9,699	191,951	64,426	21,749	262,277	106,904
12 to 15 - population	1,243,990	19,693	390,330	13,060	270,146	82,747	26,308	308,611	132,869
12 to 15 % with dose 1	84.34%	>99%	82.64%	82.30%	76.09%	82.42%	86.94%	88.84%	86.94%
12 to 15 % with dose 2	79.82%	>99%	78.94%	74.26%	71.05%	77.86%	82.67%	84.99%	80.46%

*National population will not equal sum of listed jurisdictions due to a small number of people counted in national population residing in some 'other' territories. Sum of state doses will not add to national total as some records are unable to be geocoded to a State or Territory. Doses sourced from Australian Immunisation Register, population from ABS ERP June 2020

Vaccinations by location

Cumulative total doses administered vs eligible state populations*

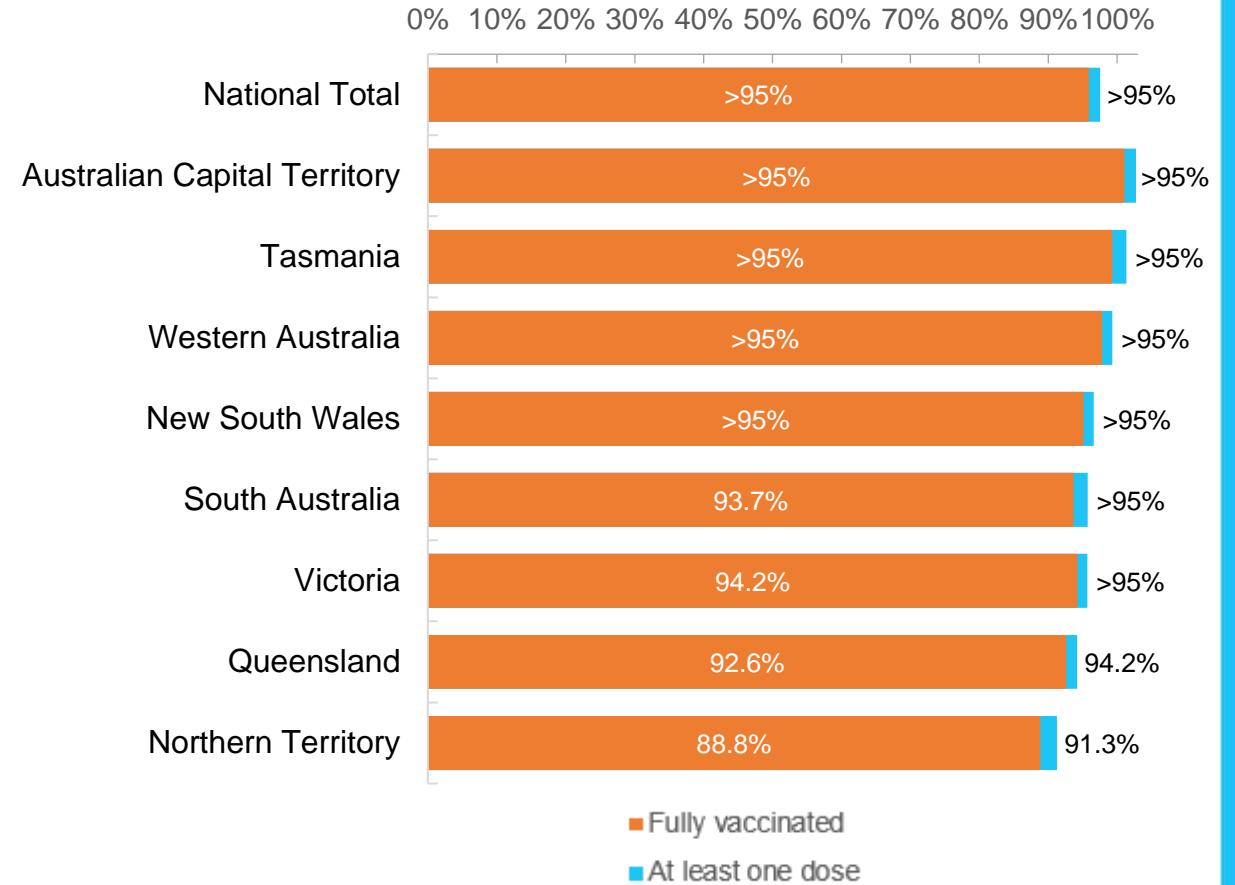


*Not an indication of percentage vaccinated, numbers will exceed 100 due to multiple doses required per person of the population. All doses are included for those aged 12 and above, and are based on vaccination provider location.

Data as at:
27 Jun 2022

Australia's COVID-19
Vaccine Roadmap

First and Second Doses by residential location



Aboriginal and Torres Strait Islander peoples

Number of people vaccinated

Data as at:
21 Jun 2022
Updated weekly

Australia's COVID-19
Vaccine Roadmap



443,167

people over the age of 16
have had at least one dose

85.0%

of people over the age of 16
have had at least one dose



424,803

people over the age of 16
are fully vaccinated

81.5%

of people over the age of 16 are
fully vaccinated



People aged 12 – 15 years

47,996

42,134

67.9%

59.6%

At least one dose

Fully vaccinated

178 Aboriginal community controlled health services (ACCHS)

0#	50	27	44	12	3	21	21
ACT	NSW	NT	QLD	SA	TAS	VIC	WA

Medicare Address State ^{##}	Individuals Dose 1	Individuals Dose 1 %	Individuals Dose 2	Individuals Dose 2 %
Australian Capital Territory	4,794	91.8%	4,674	89.5%
New South Wales	135,960	87.3%	132,912	85.4%
Northern Territory	41,475	89.7%	39,500	85.4%
Queensland	116,474	81.8%	111,127	78.1%
South Australia	20,061	80.5%	18,679	75.0%
Tasmania	13,895	88.8%	13,496	86.3%
Victoria	35,660	90.4%	34,885	88.4%
Western Australia	53,563	86.8%	49,891	80.8%
Unknown/Other Territories	21,285	70.3%	19,639	64.9%
Totals	443,167	85.0%	424,803	81.5%

Source: Australian Immunisation Register

*Identifying as Aboriginal and Torres Strait Islander is optional and the estimated population may be under reported.

**Includes all Aboriginal and Torres Strait Islander peoples who have received a vaccination, not limited to those administered in an ACCHS setting

#ACCHS in the ACT are currently operating as a Commonwealth Vaccine Clinics so not included to avoid double counting

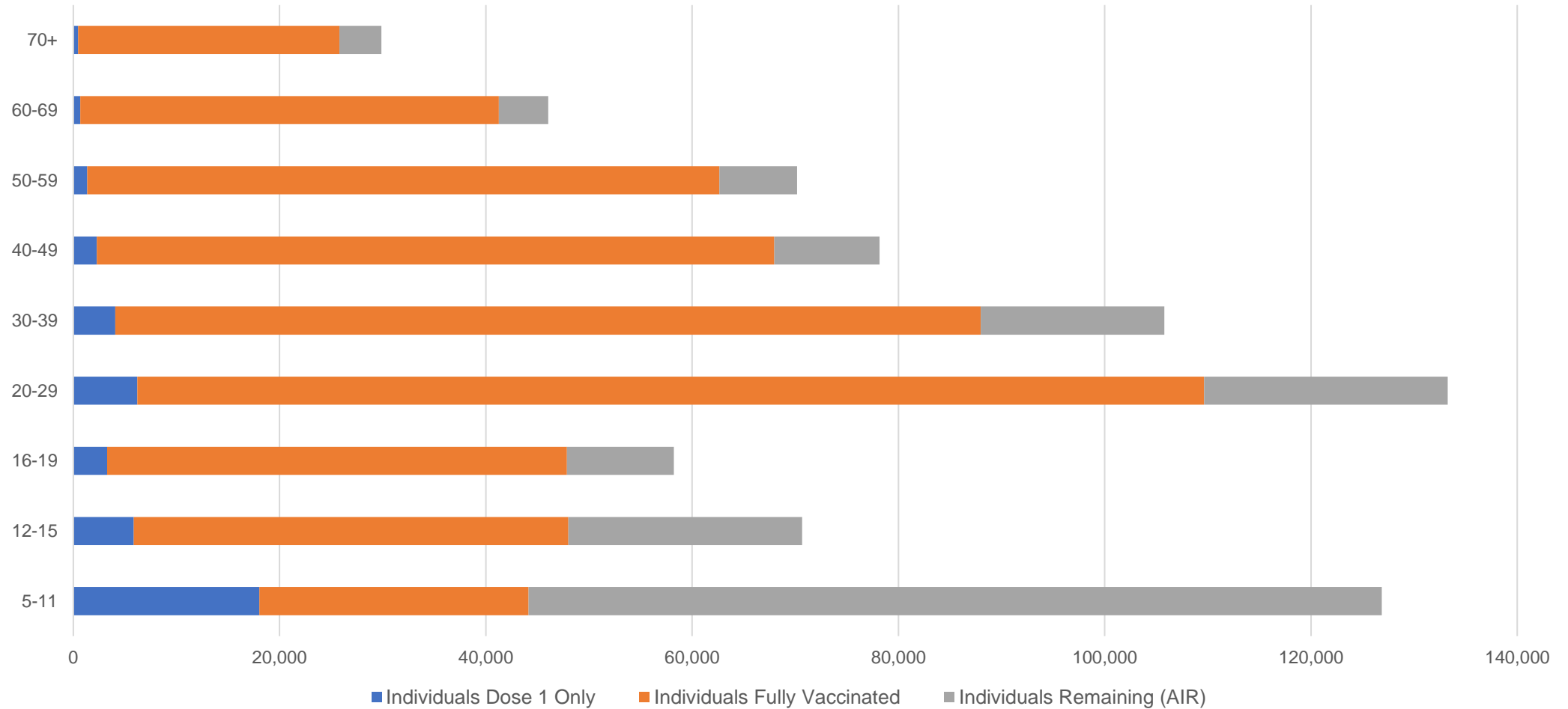
##The above table includes all identified Aboriginal and Torres Strait Islander people who are aged 16 and above by their state of residence.

Aboriginal and Torres Strait Islander peoples

Number of people vaccinated by age

Data as at:
21 Jun 2022
Updated weekly

Australia's COVID-19
Vaccine Roadmap



Source: Australian Immunisation Register

Commonwealth primary care

Data as at:
27 Jun 2022

Australia's COVID-19
Vaccine Roadmap



Primary care vaccine administration sites

5,707	128	178	3,614
GPs	CVCs	ACCHS	Pharmacies



37,591,771 total vaccine doses administered
primary care settings as at 27 June
+ 30,560 recorded in the last 24 hours

Primary care vaccinations by provider type

	Doses administered	Daily increase	7 day increase
General Practice* includes other Commonwealth	30,045,174	20,257	138,430
Pharmacy	7,546,597	10,303	61,580

NSW
12,963,879
(+10,742 daily increase)

VIC
9,328,888
(+6,761 daily increase)

QLD
7,236,324
(+6,028 daily increase)

WA
3,948,662
(+2,862 daily increase)

TAS
716,533
(+971 daily increase)

SA
2,262,985
(+2,550 daily increase)

ACT
594,364
(+639 daily increase)

NT
222,020
(+85 daily increase)

318,116

doses administered to persons residing in other territories or with missing residential information

*General practice includes Commonwealth Vaccination Clinics, Aboriginal Community Health Centres, Royal Flying Doctor Service and other Commonwealth vaccination facilities

Source: Australian Immunisation Register

Data as at:
27 Jun 2022

Commonwealth aged care and disability doses administered



1,316,228 (+ 688 last 24 hours)

Total vaccine doses administered in aged care and disability facilities as at 27 June

Number of doses administered as part of the Commonwealth aged and disability care rollout

NSW
572,289
(+263 daily increase)

VIC
247,460
(+62 daily increase)

QLD
209,415
(+216 daily increase)

WA
112,095
(+25 daily increase)

TAS
23,670
(<10 daily increase)

SA
86,432
(+62 daily increase)

ACT
17,909
(<10 daily increase)

NT
7,717
(<10 daily increase)

39,241

doses administered to persons residing in other territories or with missing residential information

Source: Australian Immunisation Register

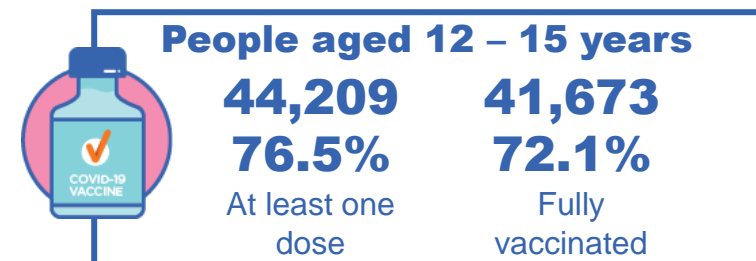
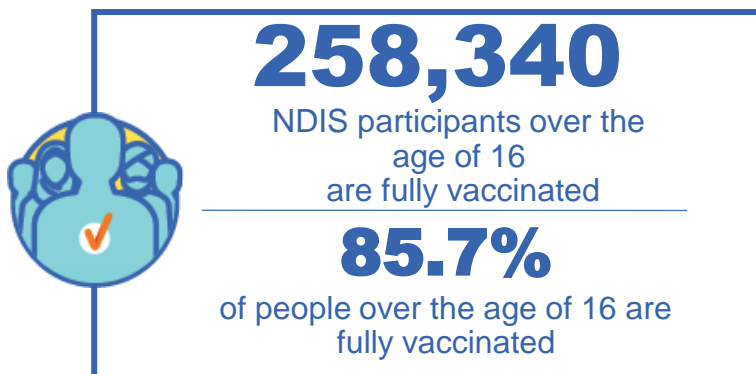
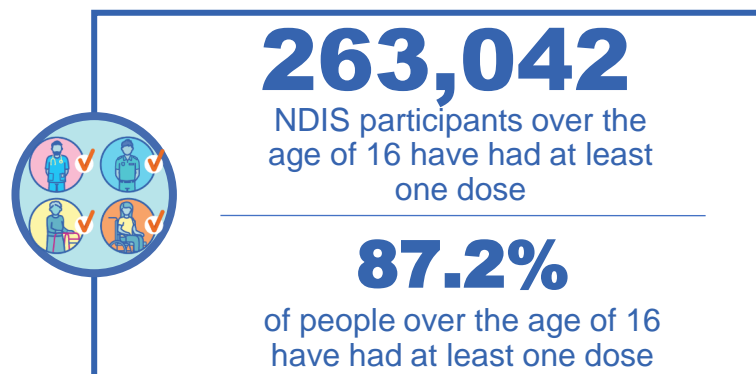
*Sourced from the Australian Immunisation Register. Includes all persons vaccinated at participating residential aged care, disability and related industry settings.

**State level breakdown indicates the residential location and may not align to the state in which the vaccination occurred.

National Disability Insurance Scheme (NDIS) reported vaccinations

Data as at:
23 June 2022
Updated weekly

Australia's COVID-19
Vaccine Roadmap



NDIS participant vaccinations

	People aged 16+ with at least one dose	People aged 16+ fully vaccinated	% People aged 16+ with at least one dose	% People aged 16+ fully vaccinated
ACT	4,947	4,883	89.2%	88.0%
NSW	80,502	79,224	87.7%	86.3%
NT	2,294	2,224	78.6%	76.2%
QLD	52,167	51,187	85.6%	84.0%
SA	21,558	21,056	85.1%	83.1%
TAS	6,573	6,421	87.5%	85.4%
VIC	69,861	68,712	88.4%	86.9%
WA	25,140	24,633	88.6%	86.8%
National	263,042	258,340	87.2%	85.7%

Source: Linkage between National Disability Insurance Agency data and the Australian Immunisation Register. Total NDIS participant numbers as at 30 May. Australian Immunisation Register data as at 22 June. Includes all participants regardless of residence type.

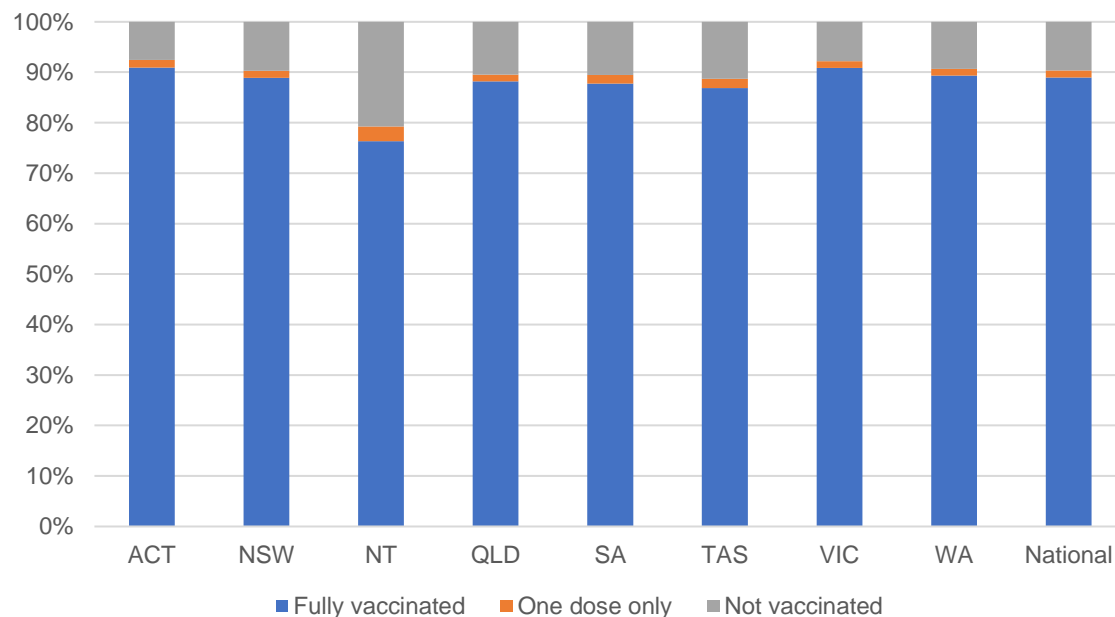
National Disability Insurance Scheme (NDIS) reported vaccinations

Data as at:
23 June 2022
Updated weekly

Australia's COVID-19
Vaccine Roadmap

NATIONAL	Total people with at least one dose	People fully vaccinated	Total number of individuals in cohort	% People with at least one dose	% People fully vaccinated
NDIS participants living in disability accommodation	21,281	20,951	23,469	90.7%	89.3%

NDIS participants in disability and aged care accommodation



Source: Linkage between National Disability Insurance Agency data and the Australian Immunisation Register. Includes participants residing in disability accommodation only.

Source: Total NDIS participant numbers as at 30 May. Participant data as at 22 June. Australian Immunisation Register data as at 22 June. Worker data as at 22 June.

NDIS workforce vaccinations

	NDIS workers with at least one dose	NDIS workers fully vaccinated	% NDIS workers with at least one dose	% NDIS workers fully vaccinated
NSW	127,095	121,926	98.2%	94.2%
VIC	117,929	114,833	98.4%	95.8%
QLD	71,391	70,541	97.9%	96.7%
WA	34,499	33,049	98.9%	94.7%
SA	35,917	34,032	98.6%	93.4%
TAS	10,865	10,650	99.5%	97.5%
ACT	12,333	12,306	99.8%	99.6%
NT	3,968	3,808	99.6%	95.6%
TOTAL	413,997	401,145	98.4%	95.3%

Source: the NDIS Commission has established a requirement for registered NDIS providers who provide intensive disability support services to report on the vaccination status of workers they employ, or otherwise engage, to deliver NDIS-funded supports and services, and who are required to be vaccinated in accordance with in-force state and territory public health orders. The statistics reflect data reported to the NDIS Commission by registered NDIS providers and should be considered indicative and subject to change

Note: Some registered NDIS providers are yet to report on the vaccination status of their workforce. The NDIS Commission is working with those providers around reporting requirements.

Remaining workers not included include those exempt from vaccination requirements, workers whose vaccination status is not yet verified by the provider (such as workers on leave) and provider reporting anomalies.

Residential aged care vaccination rollout

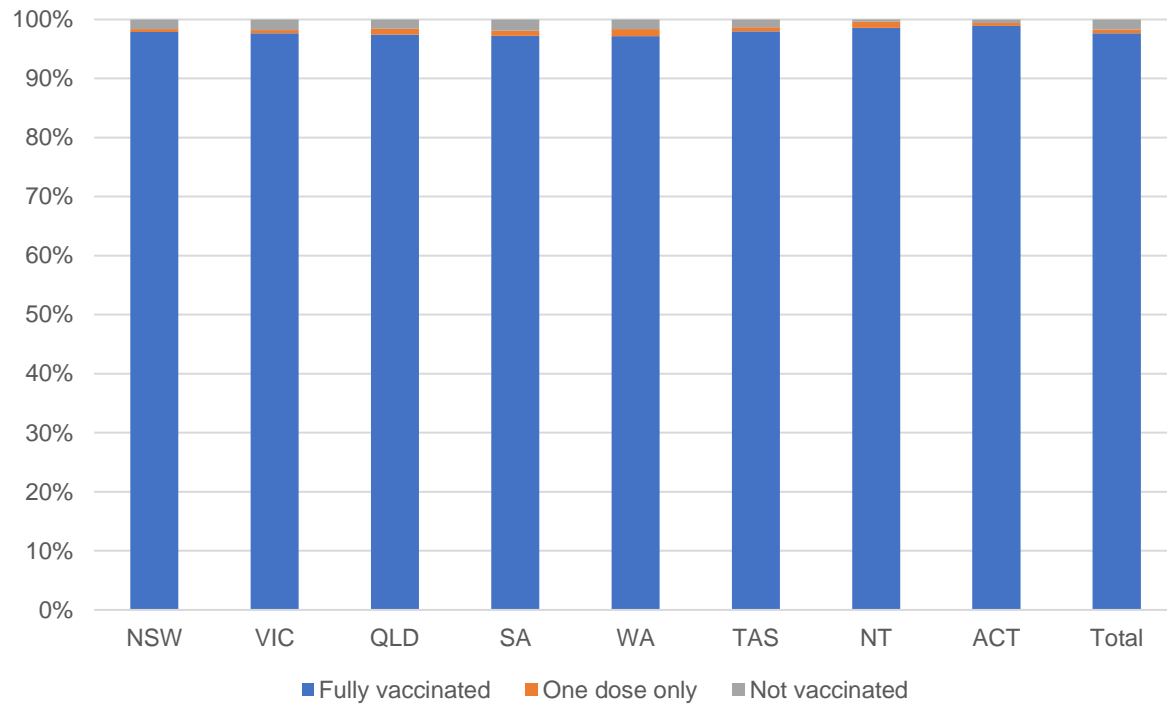
Residential aged care facilities status

176,468 **177,715**

People fully vaccinated People with at least one dose

Data as at:
23 June 2022
Updated weekly

Aged care resident vaccinations



Aged care worker vaccinations

Jurisdictions	Total workers with at least one dose	Workers fully vaccinated	% Workers with at least one dose	% Workers fully vaccinated
NSW	77,595	77,467	99.9%	99.7%
VIC	70,793	70,792	99.5%	99.5%
QLD	48,401	48,399	99.7%	99.7%
SA	27,006	26,998	100.0%	100.0%
WA	24,599	24,595	100.0%	100.0%
TAS	7,544	7,544	100.0%	100.0%
NT	934	934	100.0%	100.0%
ACT	2,921	2,921	100.0%	100.0%
Total	259,793	259,650	99.8%	99.7%

Source: Residential aged care provider self-reported COVID-19 vaccination information

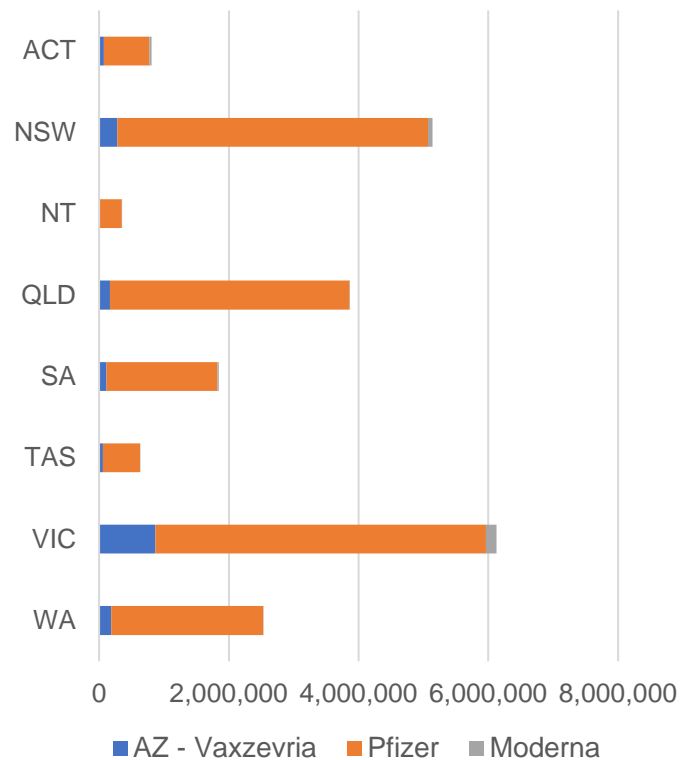
*Status updates are provided by facilities at least once per week. Reporting is updated Monday to Friday to encompass different facility updates being made on different days.

Data is sourced directly from Aged Care Service Providers and is not drawn or closely aligned with data from AIR due to inconsistencies and potential lags in uploading of records.

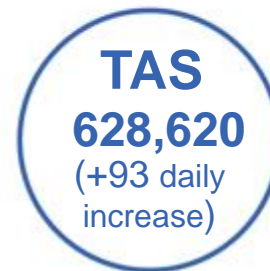
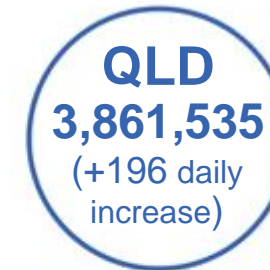
Data as at:
27 Jun 2022

Jurisdiction administered

Total vaccine doses administered in State and Territory clinics as at 27 June



21,295,480 total vaccine doses administered in State and Territory clinics as at 27 June
 + **3,014** recorded in the last 24 hours
 + **21,955** recorded in the last 7 days

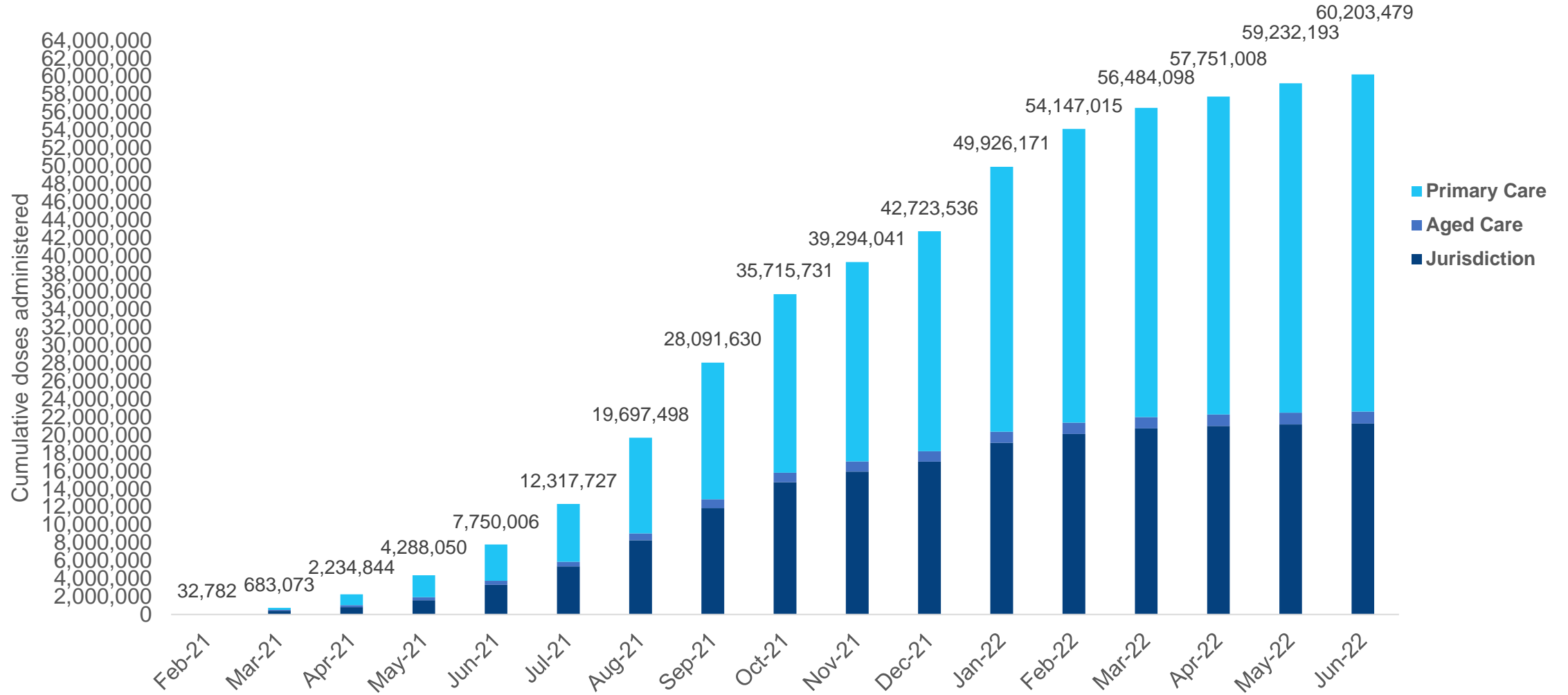


*Sourced from the Australian Immunisation Register. Numbers are calculated as difference in daily cumulative reported numbers to allow for historical corrections.

Source: Australian Immunisation Register

Cumulative doses administered by channel

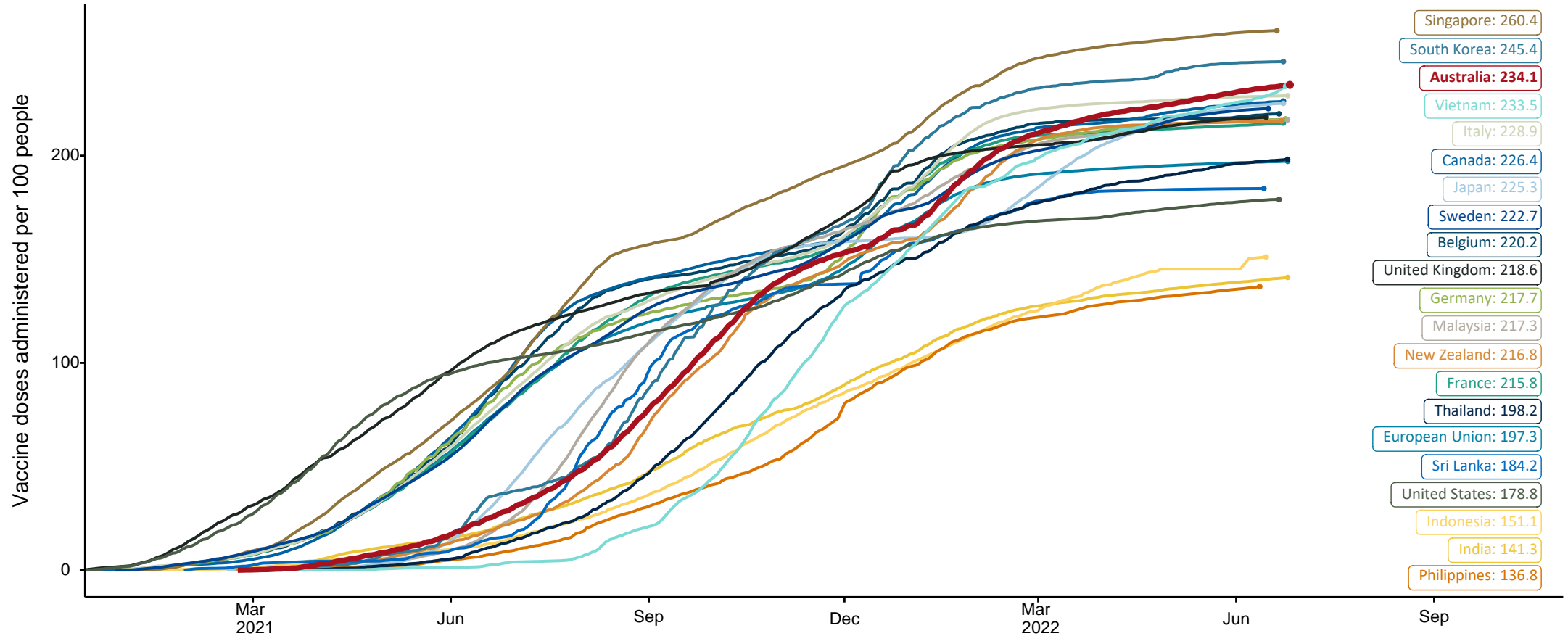
Data as at:
27 Jun 2022



Source: Australian Immunisation Register

COVID-19 vaccine doses per 100, Australia and select countries

Data as at:
26 June 2022
Updated weekly

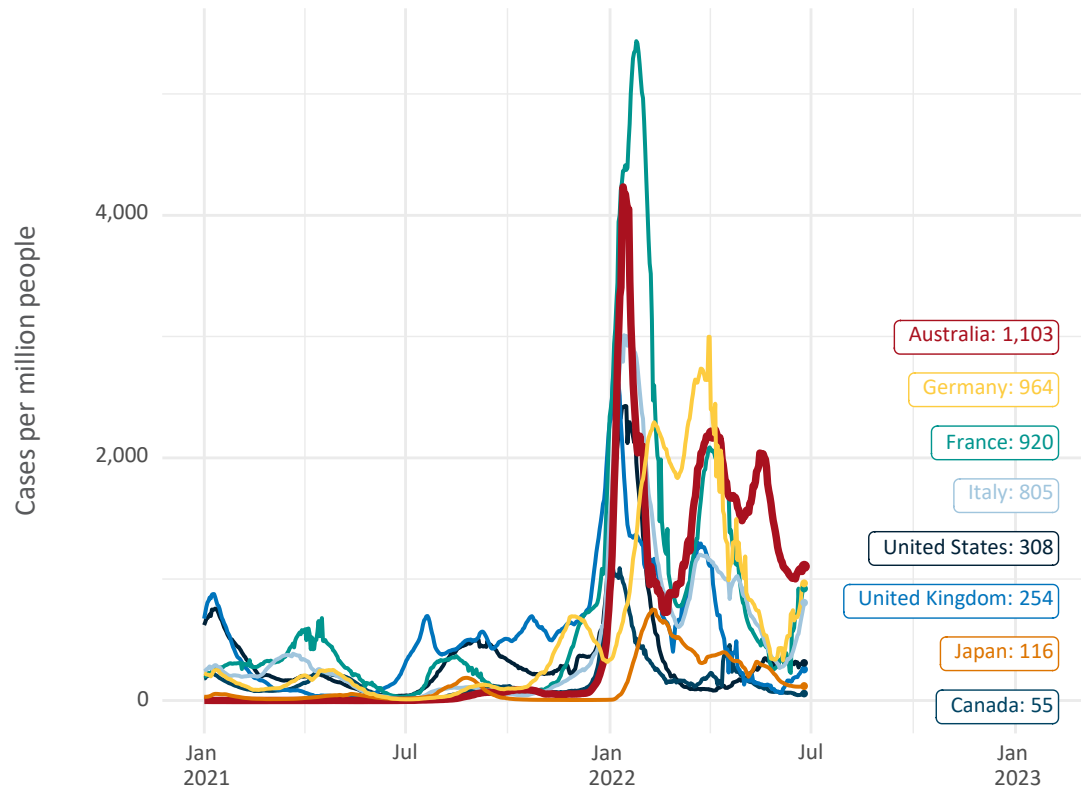


Note: From 11 January 2022, data for Australia includes all doses administered to people 5 and over. Prior to 11 January, data was for 12 and over.
Source: Department of Health (Australia), Our World in Data (international)
Latest data: 26 June

Data as at:
26 June 2022
Updated weekly

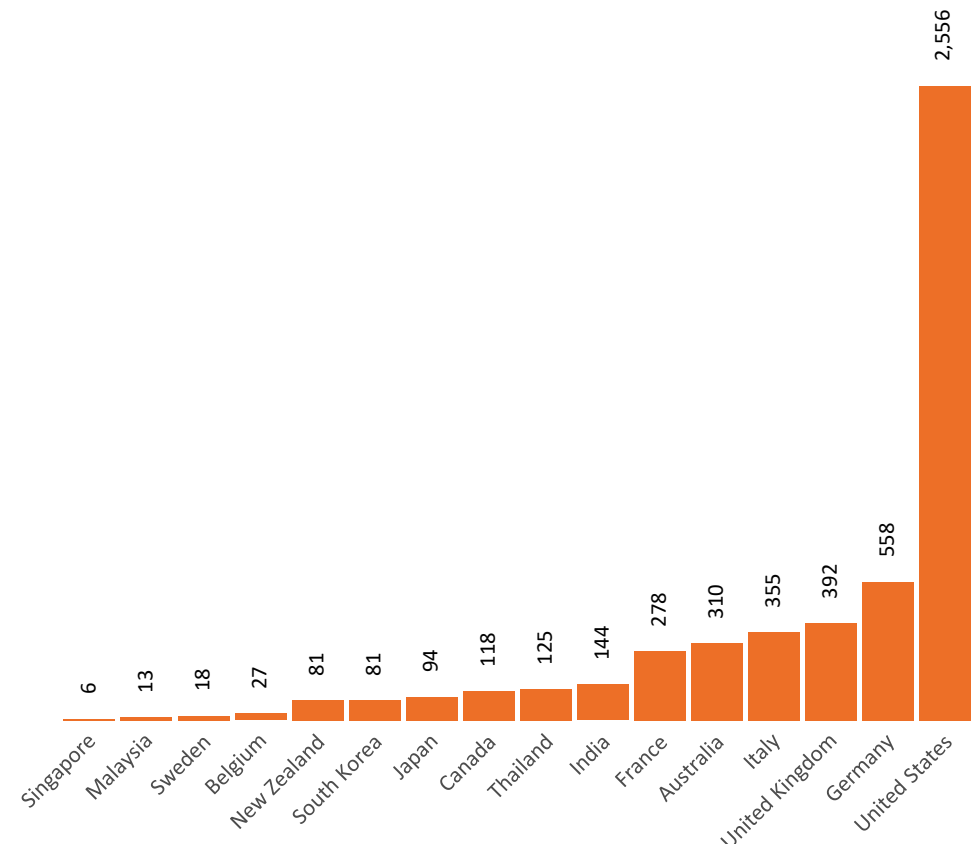
International data – COVID-19

New daily cases per million since 2021, Australia and G7 countries
Smoothed - 7 day average



Source: OWID
Data downloaded: 27 Jun 2022 08:54
Latest data: 25 Jun 2022

COVID-19 deaths in past 7 days - Australia and select countries



Source: OWID
Data downloaded: 27 Jun 2022 08:54
Latest data: 25 Jun 2022