




Australian Government
Operation COVID Shield

COVID-19 Vaccine Roll-out

27 June 2022


Data as at:
26 Jun 2022

Total vaccine doses



20,106,561
people have had at least one dose

>95%
of people over the age of 16
have had at least one dose



19,770,218
people are fully vaccinated

>95%
of people over the age of 16 are
fully vaccinated



13,863,700
people over the age of 16
who have received three or
more doses



60,169,217 total vaccine doses administered nationally as at 26 June

+5,291 recorded in the last 24 hours

NSW
18,667,055
(+1,909 daily increase)

VIC
15,784,993
(+1,298 daily increase)

QLD
11,375,879
(+624 daily increase)

WA
6,617,591
(+634 daily increase)

TAS
1,365,231
(+233 daily increase)

SA
4,186,989
(+480 daily increase)

ACT
1,576,585
(+100 daily increase)

NT
594,894
(+13 daily increase)

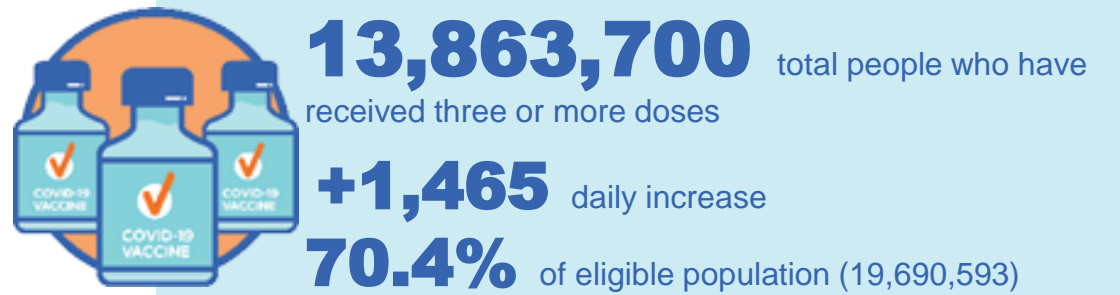
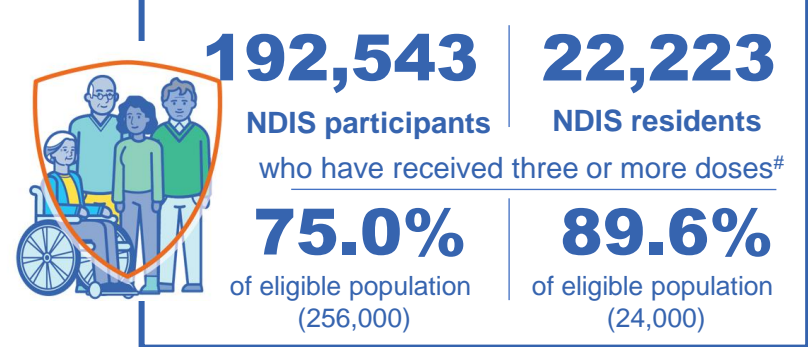
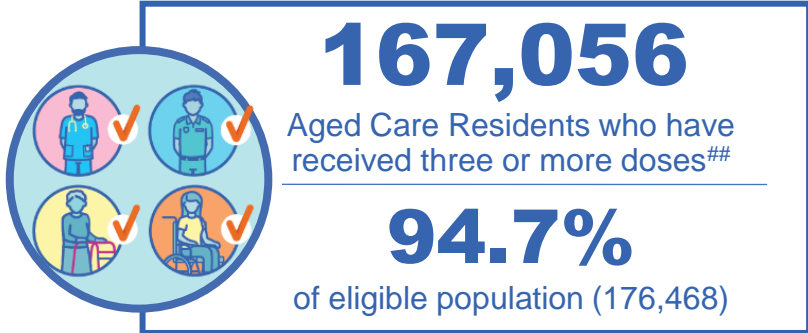
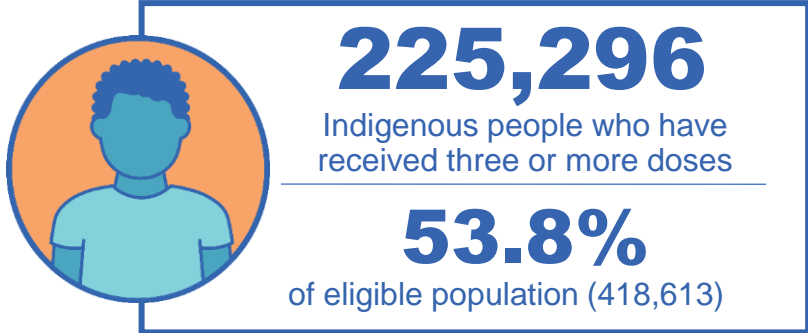
*Administration state breakdown indicates state in which a vaccine was administered

**Overall dose count includes instances of more than three doses per person in a small number of cases.

Source: Australian Immunisation Register

Booster Vaccinations

Data as at: 26 Jun 2022



	Number of People	Daily Increase	% of Eligible
NSW	4,230,563	567	67.9%
VIC	3,697,000	344	72.7%
QLD	2,401,773	213	63.4%
WA	1,701,063	116	82.8%
SA	991,789	163	73.9%
TAS	317,144	43	72.9%
ACT	273,745	23	78.9%
NT	131,330	<10	78.1%

119,293 doses administered to persons residing in other territories or with missing residential information

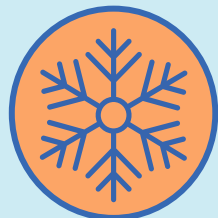
*People may belong to multiple groups and could be represented in the above breakdowns multiple times.
NDIS participants data as at 22 June 2022. ## Aged Care Residents data as at 24 June 2022.

Source: Australian Immunisation Register

Winter / Fourth Doses

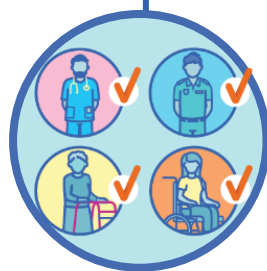
Data as at:
26 Jun 2022

Australia's COVID-19
Vaccine Roadmap



2,257,936 total people (16+) who have received four or more doses

+2,672 daily increase



1,994,559

People aged 65+ who have received four or more doses

56.6%

of eligible population (3,521,666)



83,421

Aged Care Residents who have received four or more doses[#]

61.7%

of eligible population (135,124)

	Number of People 16+	Daily Increase
ACT	43,677	18
NSW	730,438	891
NT	9,799	<10
QLD	427,872	336
SA	183,494	192
TAS	63,150	139
VIC	564,186	700
WA	224,414	389

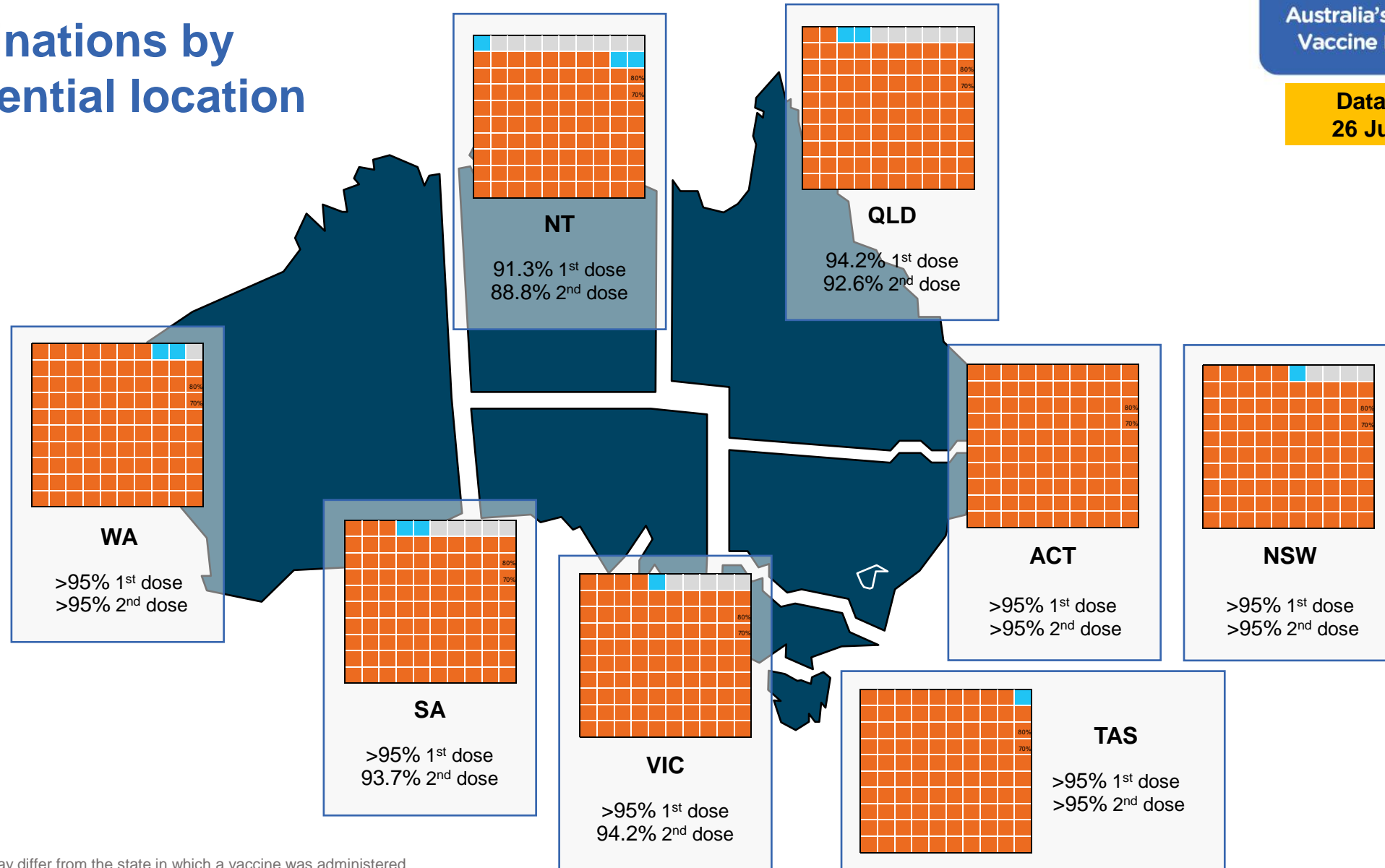
10,906 doses administered to persons residing in other territories or with missing residential information

*People become eligible for a winter booster four months after their third dose. Individuals may belong to multiple groups and could be represented in the above multiple times.
#Aged Care Residents data as at 24 June 2022

Source: Australian Immunisation Register

Data as at:
26 Jun 2022

Vaccinations by residential location



*Residential state may differ from the state in which a vaccine was administered

Commonwealth and Jurisdiction vaccine doses administered

Data as at:
26 Jun 2022



60,169,217 total vaccine doses administered nationally as at 26 June

+ 5,291 recorded in the last 24 hours

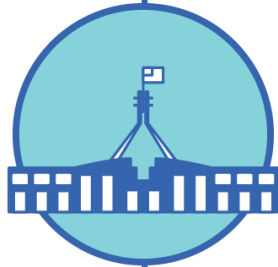


21,292,466

doses administered by state and territory facilities

+ 1,685

recorded in the last 24 hours



38,876,751

doses administered by commonwealth facilities

+ 3,606

recorded in the last 24 hours

37,561,211 total vaccine doses administered in primary care settings

1,315,540 total vaccine doses administered in aged care and disability settings

NSW	Jurisdictions	Commonwealth
Cumulative	5,141,921	13,525,134
Daily increase	775	1,134

VIC	Jurisdictions	Commonwealth
Cumulative	6,130,575	9,654,418
Daily increase	279	1,019

QLD	Jurisdictions	Commonwealth
Cumulative	3,861,339	7,514,540
Daily increase	17	607

WA	Jurisdictions	Commonwealth
Cumulative	2,531,275	4,086,316
Daily increase	170	464

TAS	Jurisdictions	Commonwealth
Cumulative	628,527	736,704
Daily increase	110	123

SA	Jurisdictions	Commonwealth
Cumulative	1,844,908	2,342,081
Daily increase	273	207

ACT	Jurisdictions	Commonwealth
Cumulative	806,722	769,863
Daily increase	55	45

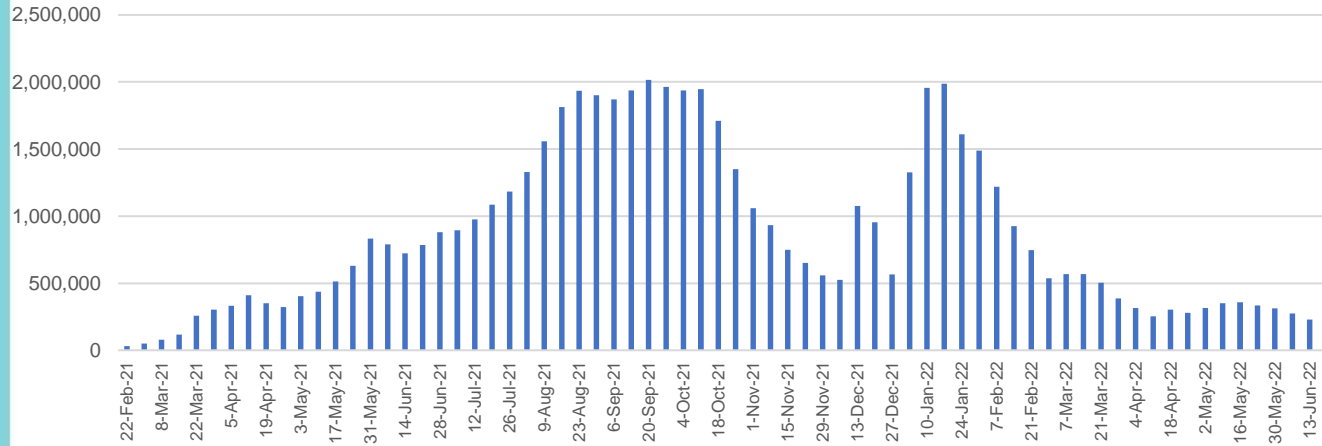
NT	Jurisdictions	Commonwealth
Cumulative	347,199	247,695
Daily increase	<10	<10

Vaccine milestone charts

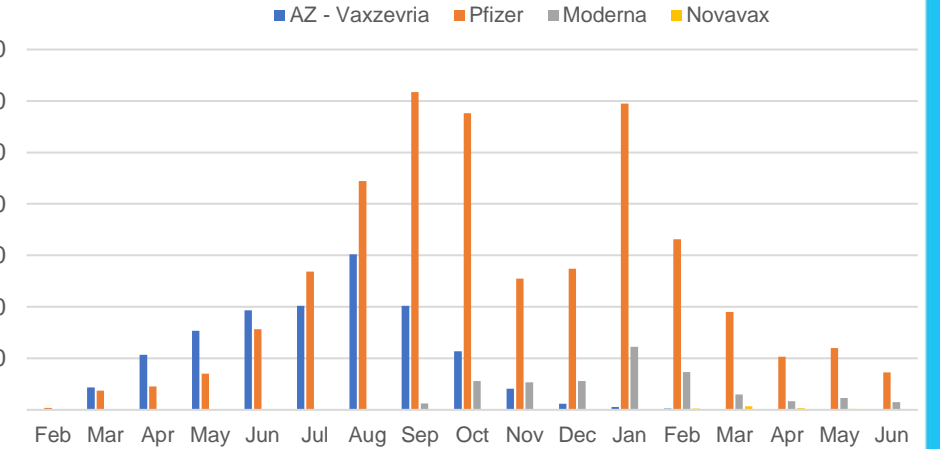
Data as at:
26 Jun 2022

Australia's COVID-19
Vaccine Roadmap

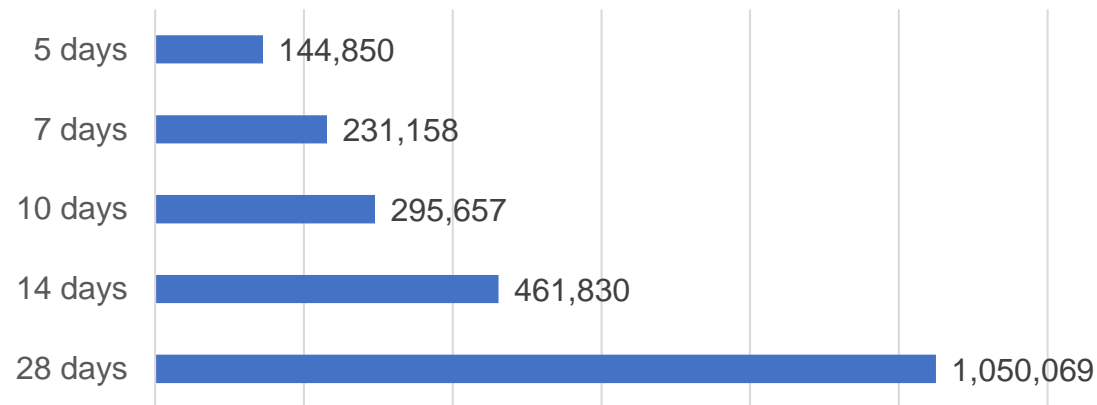
Doses Administered by Week



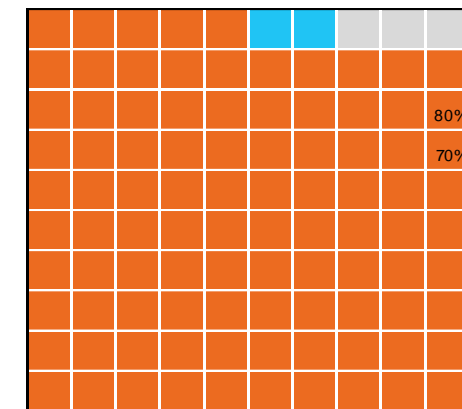
Doses by administration month and vaccine type



Doses Reported



Eligible population percentage coverage



*Each square represents 1% of the national population. Squares are filled as milestones are achieved.

*Sourced from the Australian Immunisation Register.

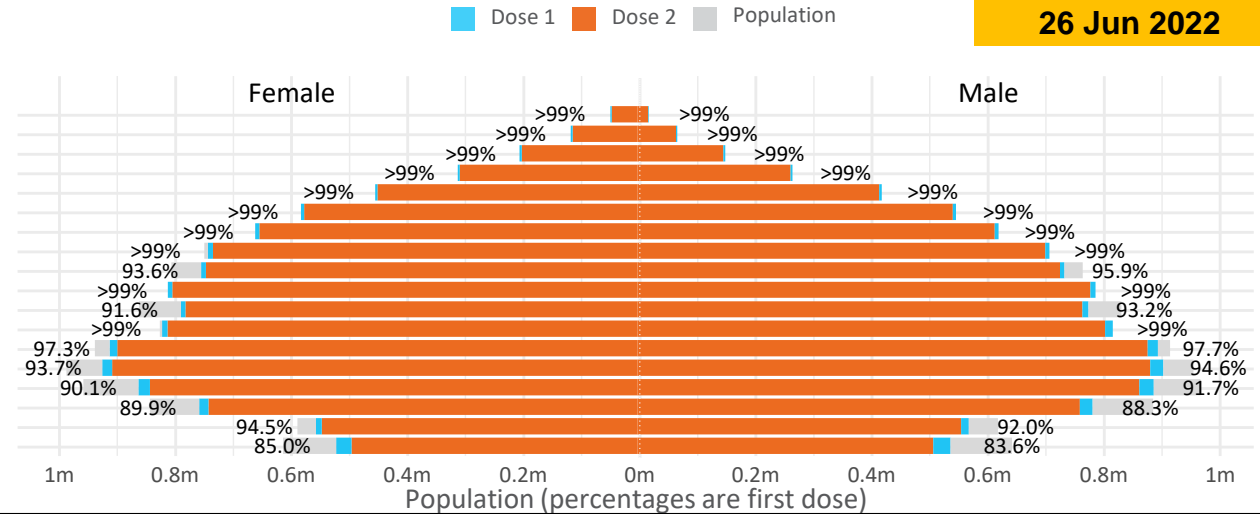
Doses by age and sex

First and second doses by age and sex

	16+	50+	12-15	5-11
Dose 1	97.51% (20,106,561 doses / 20,619,959 people)	>99% (8,925,454 doses / 8,749,703 people)	84.34% (1,049,229 doses / 1,243,990 people)	52.34% (1,191,601 doses / 2,276,638 people)
Dose 2	95.88% (19,770,218 doses / 20,619,959 people)	>99% (8,817,842 doses / 8,749,703 people)	79.82% (992,915 doses / 1,243,990 people)	39.49% (899,030 doses / 2,276,638 people)

Data as at:
26 Jun 2022

Age	Dose 1	Dose 2
95+	65,619 (>99%)	62,164 (>99%)
90-94	182,060 (>99%)	176,564 (>99%)
85-89	351,231 (>99%)	344,466 (>99%)
80-84	571,937 (>99%)	564,796 (>99%)
75-79	865,543 (>99%)	857,091 (>99%)
70-74	1,119,075 (>99%)	1,107,713 (>99%)
65-69	1,271,017 (>99%)	1,256,206 (>99%)
60-64	1,438,412 (>99%)	1,421,950 (99.0%)
55-59	1,475,537 (94.9%)	1,458,839 (93.8%)
50-54	1,585,023 (>99%)	1,568,053 (>99%)
45-49	1,550,610 (92.5%)	1,532,232 (91.4%)
40-44	1,625,785 (>99%)	1,601,776 (98.9%)
35-39	1,794,074 (97.8%)	1,761,831 (96.0%)
30-34	1,819,641 (94.6%)	1,777,593 (92.4%)
25-29	1,743,967 (91.5%)	1,696,136 (89.0%)
20-24	1,531,478 (89.4%)	1,491,259 (87.1%)
16-19	1,115,552 (93.3%)	1,091,549 (91.3%)
12-15	1,049,229 (84.3%)	992,915 (79.8%)



	AUS	ACT	NSW	NT	QLD	SA	TAS	VIC	WA
16 and over - dose 1	20,106,561	353,390	6,341,441	173,950	3,872,694	1,378,767	445,979	5,174,019	2,099,997
16 and over - dose 2	19,770,218	347,670	6,243,384	169,274	3,808,948	1,349,471	436,970	5,095,561	2,068,935
16 and over - population	20,619,959*	344,037	6,565,651	190,571	4,112,707	1,440,400	440,172	5,407,574	2,114,978
16 and over % with dose 1	97.51%	>99%	96.59%	91.28%	94.16%	95.72%	>99%	95.68%	>99%
16 and over % with dose 2	95.88%	>99%	95.09%	88.82%	92.61%	93.69%	>99%	94.23%	97.82%
5 to 11 - dose 1	1,191,601	31,753	355,932	13,139	206,269	83,728	28,444	324,414	140,282
5 to 11 - dose 2	899,030	27,297	274,837	8,776	149,501	63,466	23,114	245,297	102,114
5 to 11 - population	2,276,638	39,789	716,460	24,750	478,731	148,816	45,033	578,499	244,154
5 to 11 % with dose 1	52.34%	79.80%	49.68%	53.09%	43.09%	56.26%	63.16%	56.08%	57.46%
5 to 11 % with dose 2	39.49%	68.60%	38.36%	35.46%	31.23%	42.65%	51.33%	42.40%	41.82%
12 to 15 - dose 1	1,049,229	20,121	322,582	10,754	205,569	68,218	22,865	274,171	115,514
12 to 15 - dose 2	992,915	19,565	308,132	9,702	191,962	64,442	21,744	262,262	106,909
12 to 15 - population	1,243,990	19,693	390,330	13,060	270,146	82,747	26,308	308,611	132,869
12 to 15 % with dose 1	84.34%	>99%	82.64%	82.34%	76.10%	82.44%	86.91%	88.84%	86.94%
12 to 15 % with dose 2	79.82%	>99%	78.94%	74.29%	71.06%	77.88%	82.65%	84.98%	80.46%

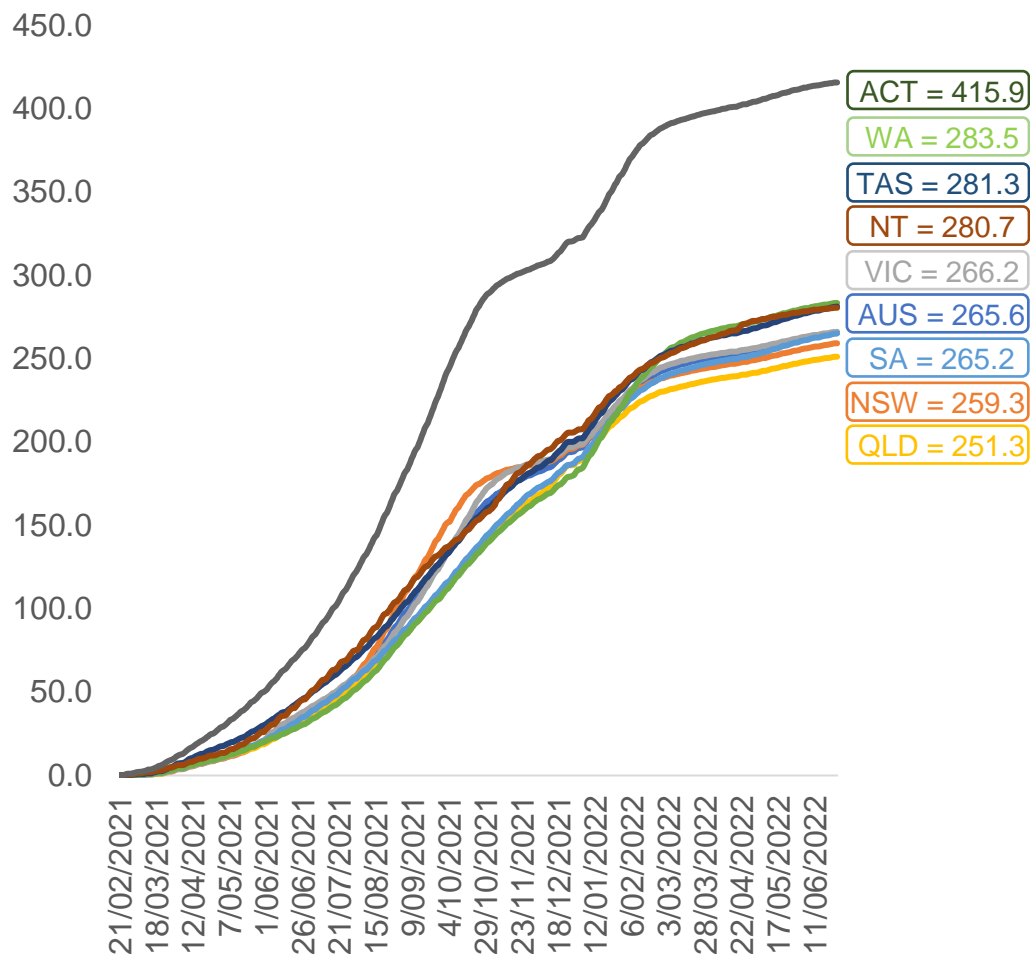
*National population will not equal sum of listed jurisdictions due to a small number of people counted in national population residing in some 'other' territories. Sum of state doses will not add to national total as some records are unable to be geocoded to a State or Territory. Doses sourced from Australian Immunisation Register, population from ABS ERP June 2020

Vaccinations by location

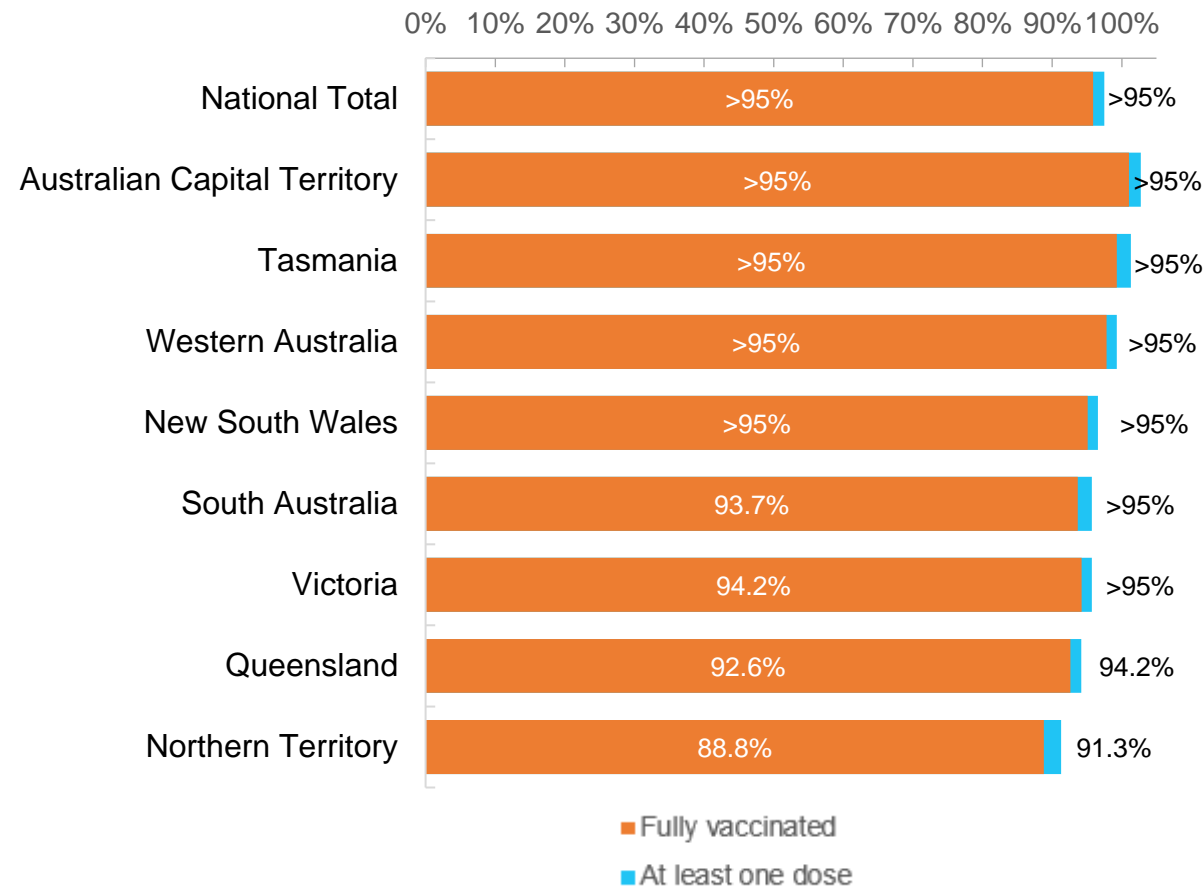
Data as at:
26 Jun 2022

Australia's COVID-19
Vaccine Roadmap

Cumulative total doses administered vs eligible state populations*



First and Second Doses by residential location



*Not an indication of percentage vaccinated, numbers will exceed 100 due to multiple doses required per person of the population. All doses are included for those aged 12 and above, and are based on vaccination provider location.

Aboriginal and Torres Strait Islander peoples

Number of people vaccinated

Data as at:
21 Jun 2022
Updated weekly

Australia's COVID-19
Vaccine Roadmap



443,167

people over the age of 16
have had at least one dose

85.0%

of people over the age of 16
have had at least one dose



424,803

people over the age of 16
are fully vaccinated

81.5%

of people over the age of 16 are
fully vaccinated



People aged 12 – 15 years

47,996

42,134

67.9%

59.6%

At least one dose

Fully vaccinated

178 Aboriginal community controlled health services (ACCHS)

0#	50	27	44	12	3	21	21
ACT	NSW	NT	QLD	SA	TAS	VIC	WA

Medicare Address State ^{##}	Individuals Dose 1	Individuals Dose 1 %	Individuals Dose 2	Individuals Dose 2 %
Australian Capital Territory	4,794	91.8%	4,674	89.5%
New South Wales	135,960	87.3%	132,912	85.4%
Northern Territory	41,475	89.7%	39,500	85.4%
Queensland	116,474	81.8%	111,127	78.1%
South Australia	20,061	80.5%	18,679	75.0%
Tasmania	13,895	88.8%	13,496	86.3%
Victoria	35,660	90.4%	34,885	88.4%
Western Australia	53,563	86.8%	49,891	80.8%
Unknown/Other Territories	21,285	70.3%	19,639	64.9%
Totals	443,167	85.0%	424,803	81.5%

Source: Australian Immunisation Register

*Identifying as Aboriginal and Torres Strait Islander is optional and the estimated population may be under reported.

**Includes all Aboriginal and Torres Strait Islander peoples who have received a vaccination, not limited to those administered in an ACCHS setting

#ACCHS in the ACT are currently operating as a Commonwealth Vaccine Clinics so not included to avoid double counting

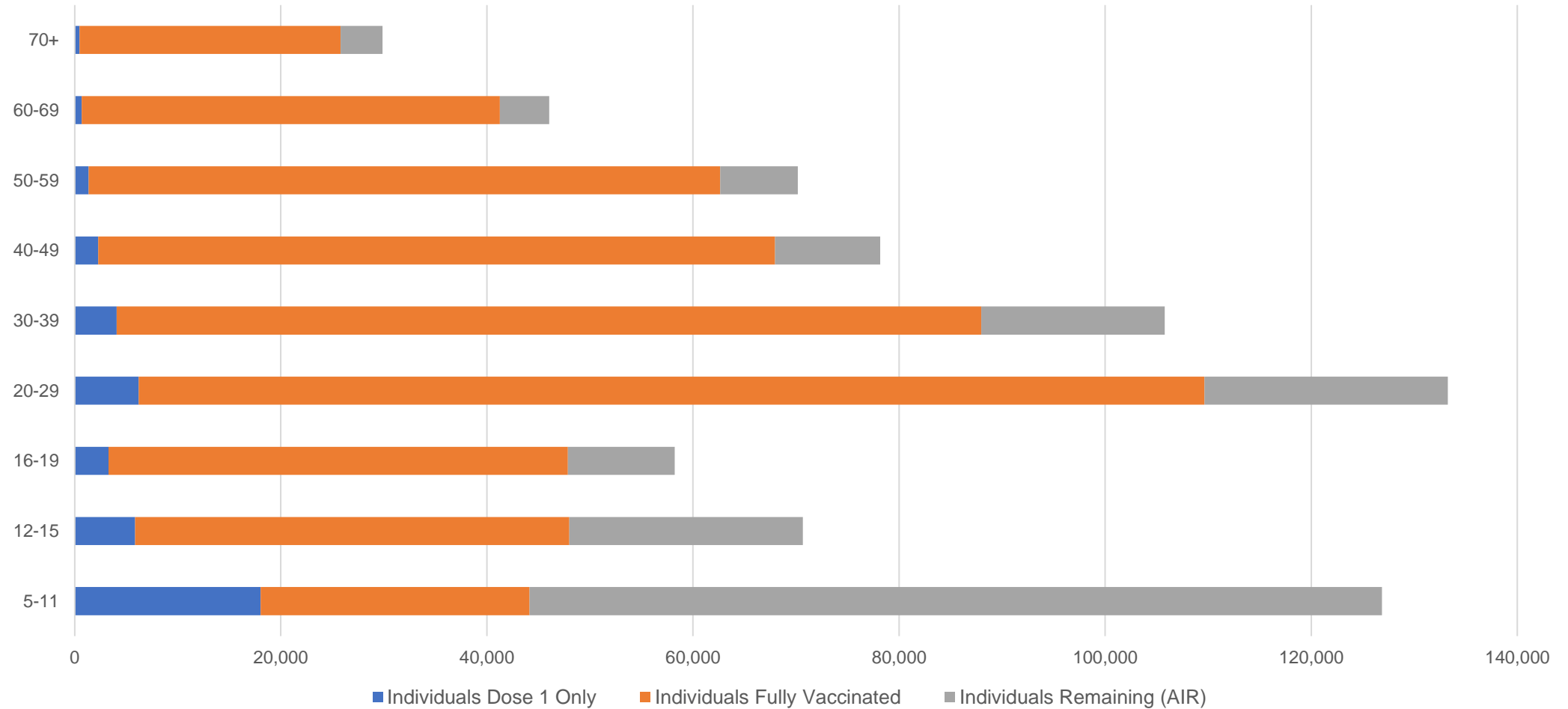
##The above table includes all identified Aboriginal and Torres Strait Islander people who are aged 16 and above by their state of residence.

Aboriginal and Torres Strait Islander peoples

Number of people vaccinated by age

Data as at:
21 Jun 2022
Updated weekly

Australia's COVID-19
Vaccine Roadmap



Source: Australian Immunisation Register

Commonwealth primary care

Data as at:
26 Jun 2022

Australia's COVID-19
Vaccine Roadmap



Primary care vaccine administration sites

5,704	128	178	3,611
GPs	CVCs	ACCHS	Pharmacies



37,561,211 total vaccine doses administered
primary care settings as at 26 June
+ 3,605 recorded in the last 24 hours

Primary care vaccinations by provider type

	Doses administered	Daily increase	7 day increase
General Practice* includes other Commonwealth	30,024,917	2,445	142,684
Pharmacy	7,536,294	1,160	63,150

NSW
12,953,137
(+1,106 daily increase)

VIC
9,322,127
(+983 daily increase)

QLD
7,230,296
(+654 daily increase)

WA
3,945,800
(+516 daily increase)

TAS
715,562
(+120 daily increase)

SA
2,260,435
(+212 daily increase)

ACT
593,725
(+92 daily increase)

NT
221,935
(<10 daily increase)

318,194

doses administered to persons residing in other territories or with missing residential information

*General practice includes Commonwealth Vaccination Clinics, Aboriginal Community Health Centres, Royal Flying Doctor Service and other Commonwealth vaccination facilities

Source: Australian Immunisation Register

Data as at:
26 Jun 2022

Commonwealth aged care and disability doses administered



1,315,540 (<10 last 24 hours)

Total vaccine doses administered in aged care and disability facilities as at 26 June

Number of doses administered as part of the Commonwealth aged and disability care rollout

NSW
572,026
(<10 daily increase)

VIC
247,398
(<10 daily increase)

QLD
209,199
(<10 daily increase)

WA
112,070
(<10 daily increase)

TAS
23,674
(<10 daily increase)

SA
86,370
(<10 daily increase)

ACT
17,904
(<10 daily increase)

NT
7,714
(<10 daily increase)

39,185

doses administered to persons residing in other territories or with missing residential information

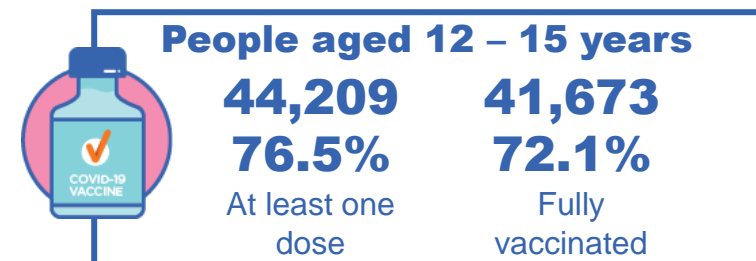
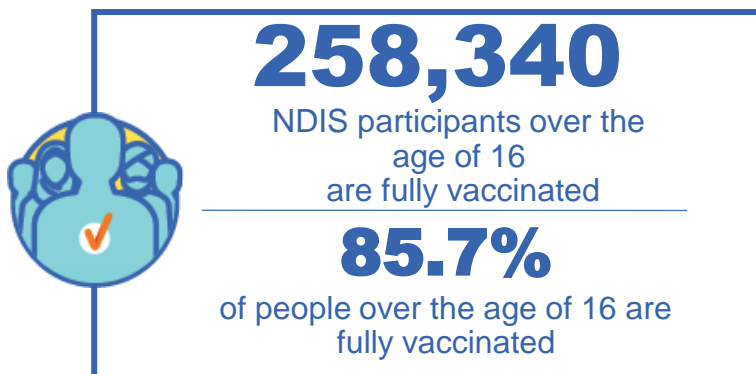
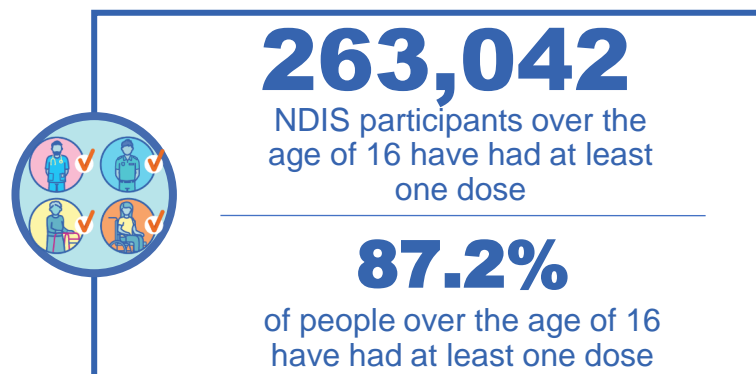
Source: Australian Immunisation Register

*Sourced from the Australian Immunisation Register. Includes all persons vaccinated at participating residential aged care, disability and related industry settings.
**State level breakdown indicates the residential location and may not align to the state in which the vaccination occurred.

National Disability Insurance Scheme (NDIS) reported vaccinations

Data as at:
23 June 2022
Updated weekly

Australia's COVID-19
Vaccine Roadmap



NDIS participant vaccinations

	People aged 16+ with at least one dose	People aged 16+ fully vaccinated	% People aged 16+ with at least one dose	% People aged 16+ fully vaccinated
ACT	4,947	4,883	89.2%	88.0%
NSW	80,502	79,224	87.7%	86.3%
NT	2,294	2,224	78.6%	76.2%
QLD	52,167	51,187	85.6%	84.0%
SA	21,558	21,056	85.1%	83.1%
TAS	6,573	6,421	87.5%	85.4%
VIC	69,861	68,712	88.4%	86.9%
WA	25,140	24,633	88.6%	86.8%
National	263,042	258,340	87.2%	85.7%

Source: Linkage between National Disability Insurance Agency data and the Australian Immunisation Register. Total NDIS participant numbers as at 30 May. Australian Immunisation Register data as at 22 June. Includes all participants regardless of residence type.

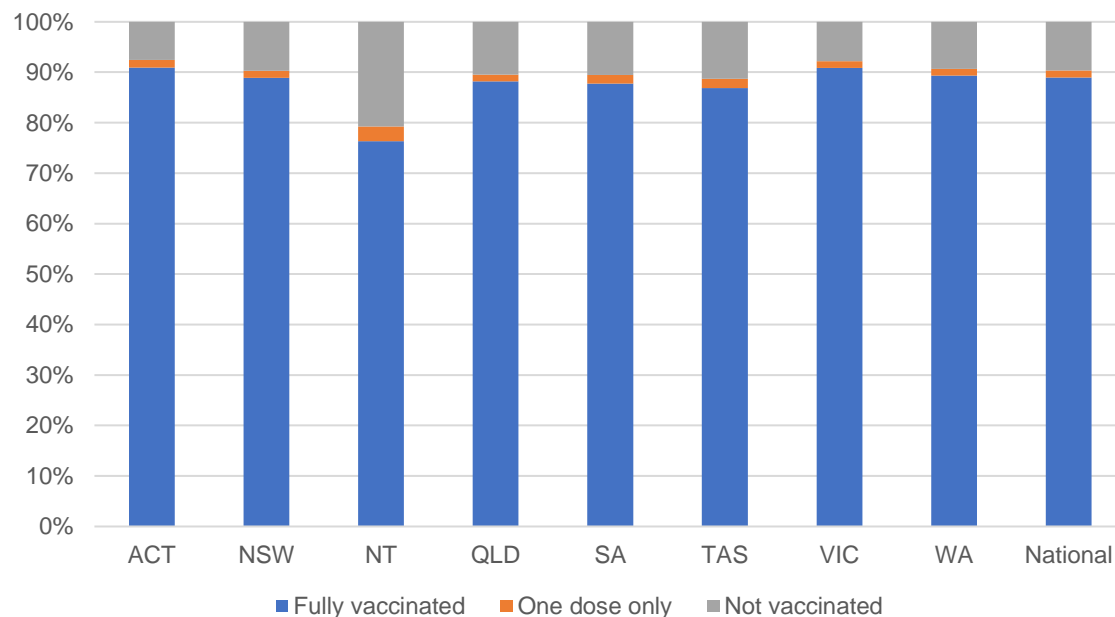
National Disability Insurance Scheme (NDIS) reported vaccinations

Data as at:
23 June 2022
Updated weekly

Australia's COVID-19
Vaccine Roadmap

NATIONAL	Total people with at least one dose	People fully vaccinated	Total number of individuals in cohort	% People with at least one dose	% People fully vaccinated
NDIS participants living in disability accommodation	21,281	20,951	23,469	90.7%	89.3%

NDIS participants in disability and aged care accommodation



Source: Linkage between National Disability Insurance Agency data and the Australian Immunisation Register. Includes participants residing in disability accommodation only.

Source: Total NDIS participant numbers as at 30 May. Participant data as at 22 June. Australian Immunisation Register data as at 22 June. Worker data as at 22 June.

NDIS workforce vaccinations

	NDIS workers with at least one dose	NDIS workers fully vaccinated	% NDIS workers with at least one dose	% NDIS workers fully vaccinated
NSW	127,095	121,926	98.2%	94.2%
VIC	117,929	114,833	98.4%	95.8%
QLD	71,391	70,541	97.9%	96.7%
WA	34,499	33,049	98.9%	94.7%
SA	35,917	34,032	98.6%	93.4%
TAS	10,865	10,650	99.5%	97.5%
ACT	12,333	12,306	99.8%	99.6%
NT	3,968	3,808	99.6%	95.6%
TOTAL	413,997	401,145	98.4%	95.3%

Source: the NDIS Commission has established a requirement for registered NDIS providers who provide intensive disability support services to report on the vaccination status of workers they employ, or otherwise engage, to deliver NDIS-funded supports and services, and who are required to be vaccinated in accordance with in-force state and territory public health orders. The statistics reflect data reported to the NDIS Commission by registered NDIS providers and should be considered indicative and subject to change

Note: Some registered NDIS providers are yet to report on the vaccination status of their workforce. The NDIS Commission is working with those providers around reporting requirements.

Remaining workers not included include those exempt from vaccination requirements, workers whose vaccination status is not yet verified by the provider (such as workers on leave) and provider reporting anomalies.

Residential aged care vaccination rollout

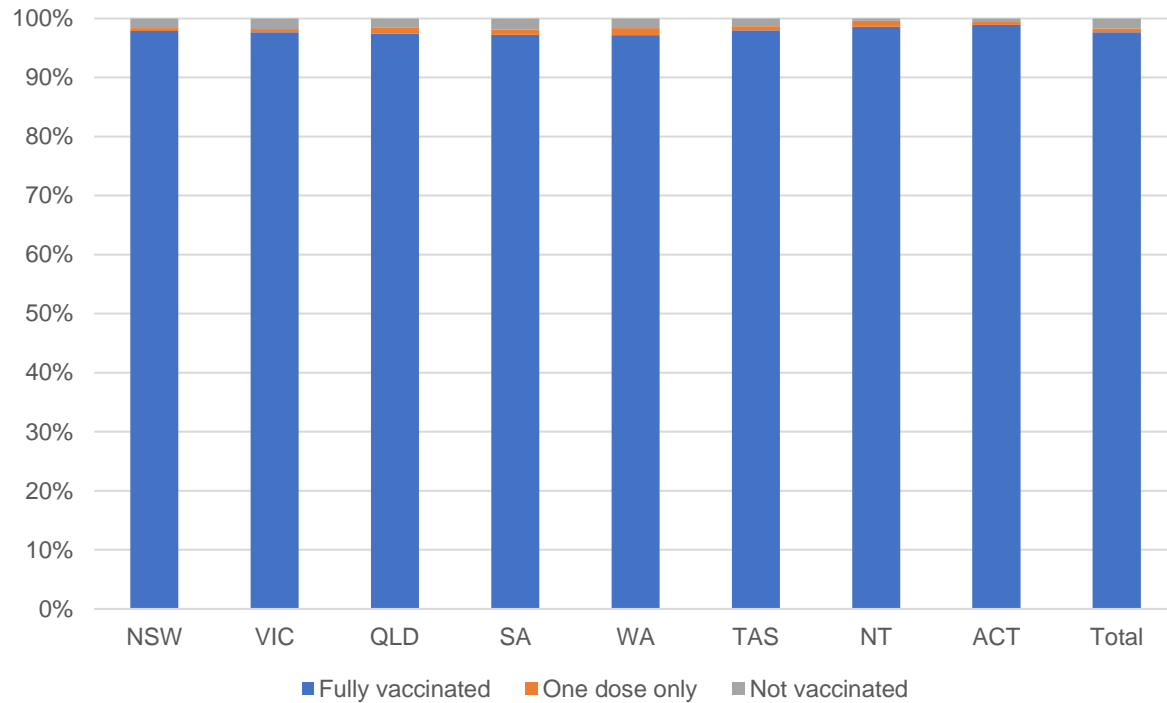
Residential aged care facilities status

176,468 **177,715**

People fully vaccinated People with at least one dose

Data as at:
23 June 2022
Updated weekly

Aged care resident vaccinations



Aged care worker vaccinations

Jurisdictions	Total workers with at least one dose	Workers fully vaccinated	% Workers with at least one dose	% Workers fully vaccinated
NSW	77,595	77,467	99.9%	99.7%
VIC	70,793	70,792	99.5%	99.5%
QLD	48,401	48,399	99.7%	99.7%
SA	27,006	26,998	100.0%	100.0%
WA	24,599	24,595	100.0%	100.0%
TAS	7,544	7,544	100.0%	100.0%
NT	934	934	100.0%	100.0%
ACT	2,921	2,921	100.0%	100.0%
Total	259,793	259,650	99.8%	99.7%

Source: Residential aged care provider self-reported COVID-19 vaccination information

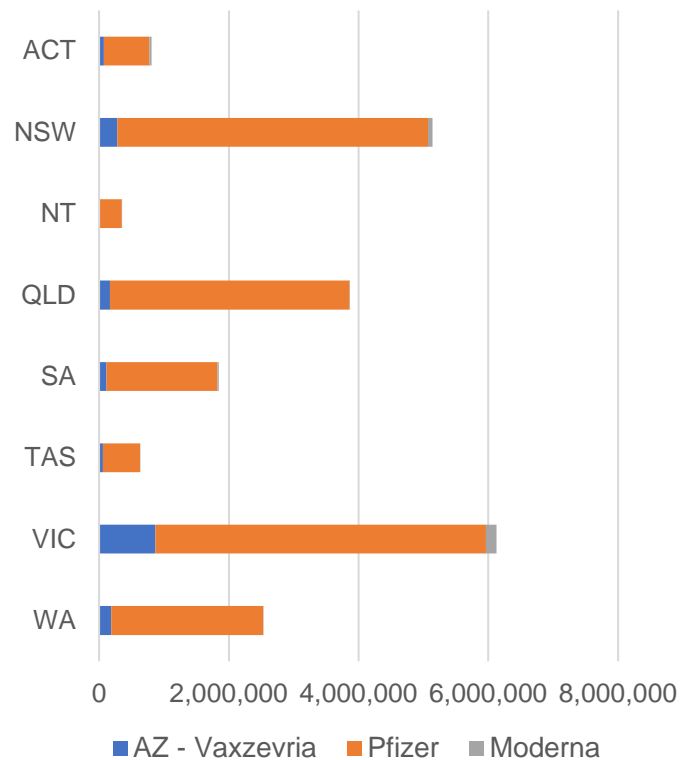
*Status updates are provided by facilities at least once per week. Reporting is updated Monday to Friday to encompass different facility updates being made on different days.

Data is sourced directly from Aged Care Service Providers and is not drawn or closely aligned with data from AIR due to inconsistencies and potential lags in uploading of records.

Data as at:
26 Jun 2022

Jurisdiction administered

Total vaccine doses administered in State and Territory clinics as at 26 June



21,292,466 total vaccine doses administered in State and Territory clinics as at 26 June
 + **1,685** recorded in the last 24 hours
 + **22,416** recorded in the last 7 days

NSW
5,141,921
 (+775 daily increase)

VIC
6,130,575
 (+279 daily increase)

QLD
3,861,339
 (+17 daily increase)

WA
2,531,275
 (+170 daily increase)

TAS
628,527
 (+110 daily increase)

SA
1,844,908
 (+273 daily increase)

ACT
806,722
 (+55 daily increase)

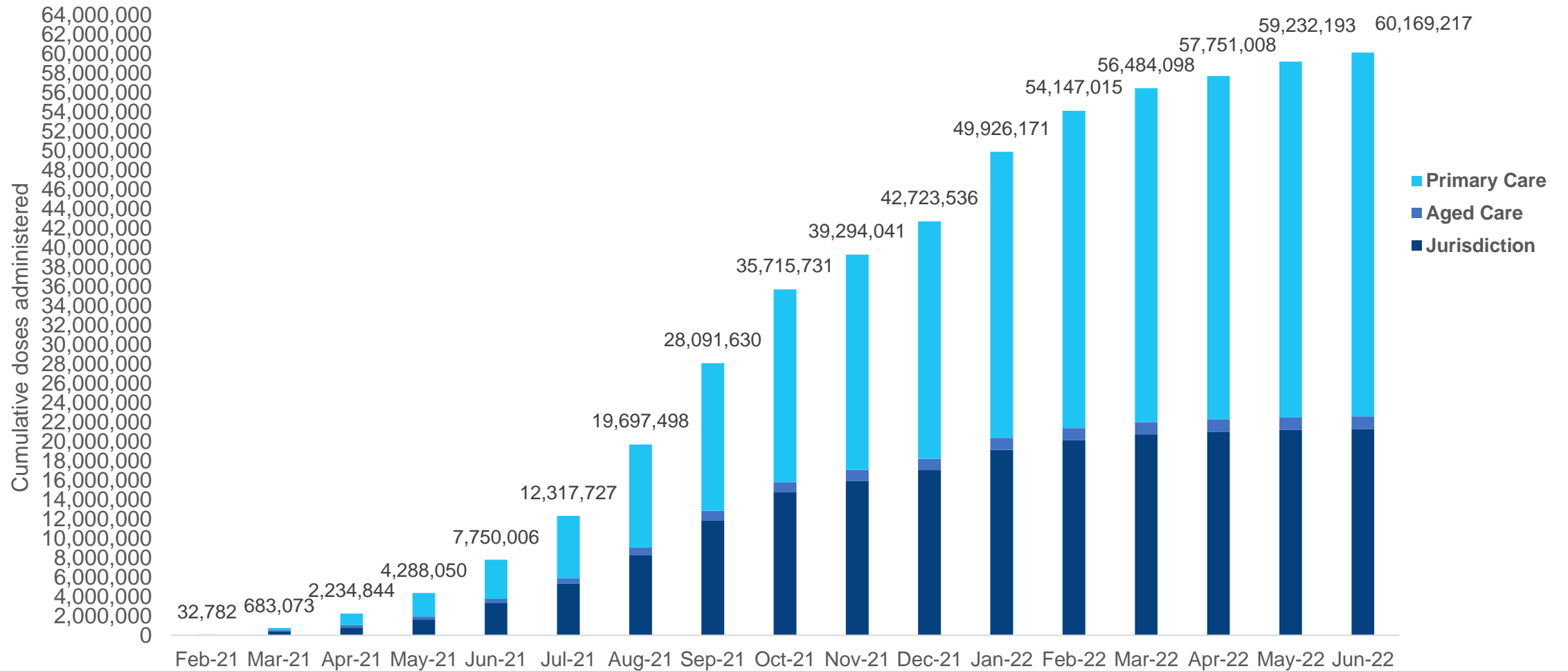
NT
347,199
 (<10 daily increase)

*Sourced from the Australian Immunisation Register. Numbers are calculated as difference in daily cumulative reported numbers to allow for historical corrections.

Source: Australian Immunisation Register

Data as at:
26 Jun 2022

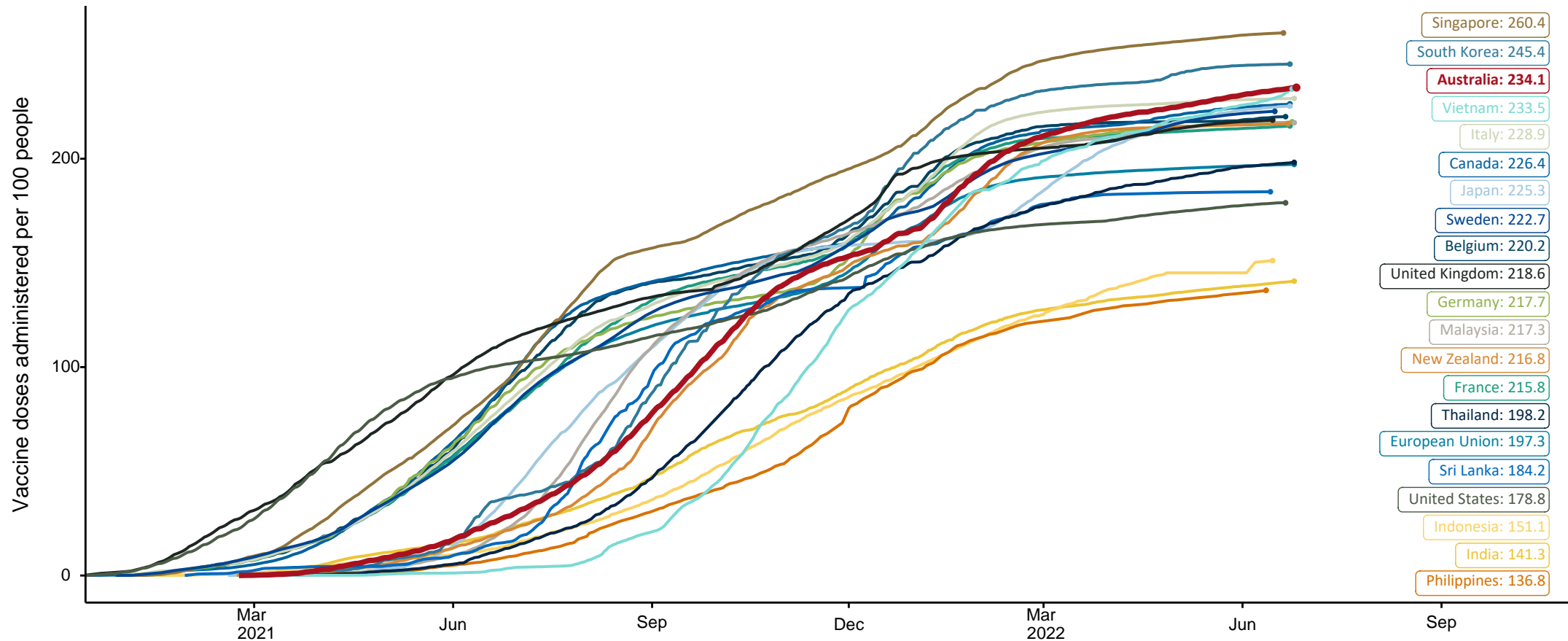
Cumulative doses administered by channel



Source: Australian Immunisation Register

COVID-19 vaccine doses per 100, Australia and select countries

Data as at: 26 Jun 2022

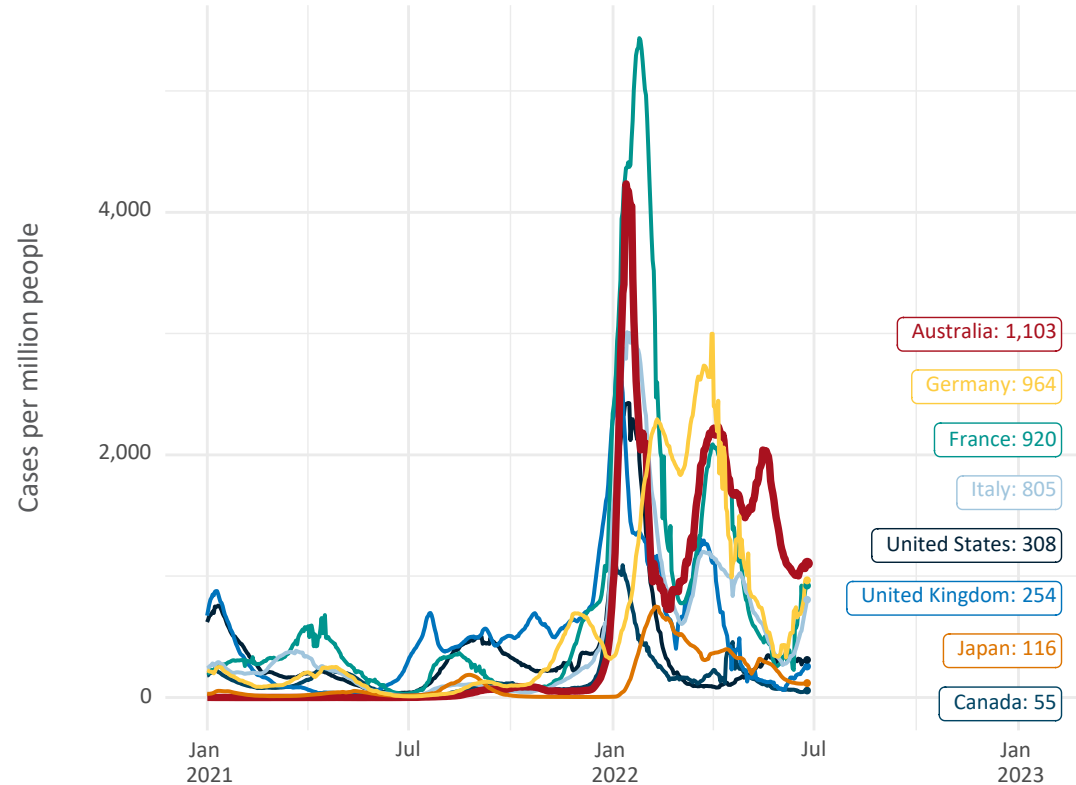


Note: From 11 January 2022, data for Australia includes all doses administered to people 5 and over. Prior to 11 January, data was for 12 and over.
 Source: Department of Health (Australia), Our World in Data (international)
 Latest data: 26 June

Data as at:
26 Jun 2022

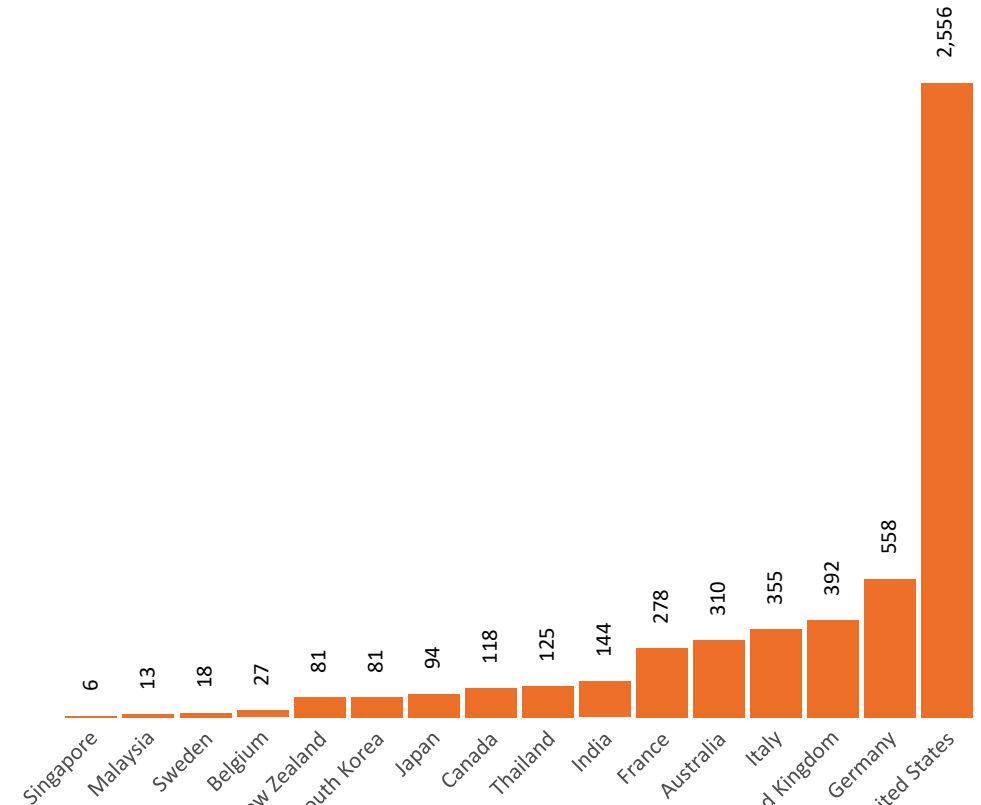
International data – COVID-19

New daily cases per million since 2021, Australia and G7 countries
Smoothed - 7 day average



Source: OWID
Data downloaded: 27 Jun 2022 08:54
Latest data: 25 Jun 2022

COVID-19 deaths in past 7 days - Australia and select countries



Source: OWID
Data downloaded: 27 Jun 2022 08:54
Latest data: 25 Jun 2022

Administration and Utilisation

Doses as at 26 June 2022

	Ordered	Available	Administered	Stock on Hand at Sites	Estimated Dose Utilisation %
	Up to 26/06/22	Delivered up to 19/06/22 including redistributions	Up to 26/06/22		(see note)
NSW	6,113,472	6,113,372	5,141,921	360,114	94%
VIC	7,006,854	7,006,754	6,130,575	236,556	97%
QLD	4,847,402	4,805,642	3,861,339	463,888	90%
WA	2,684,878	2,683,578	2,531,275	81,670	Fully utilised
SA	2,152,220	2,123,220	1,844,908	97,692	97%
TAS	656,390	656,390	628,527	342	Fully utilised
NT	424,548	414,460	347,199	30,409	94%
ACT	651,586	651,586	806,722	6,236	Fully utilised
Jurisdiction delivered total	24,537,350	24,455,002	21,292,466	1,276,907	97%
Commonwealth Vaccination Providers	1,444,440	1,440,616	1,315,540	7,947	Fully utilised
Commonwealth Primary Care & Other	59,181,350	58,760,262	37,561,211	15,368,937	74%
Total	85,163,140	84,655,880	60,169,217	16,653,790	81%

About this data

- Ordered – Total doses delivered or in transit to sites. Based on logistics provider data. This figure includes doses allocated for administration in the coming week.
- Available – total doses that could have been administered to date, less doses re-distributed from States & Territories to Primary Care or Commonwealth Vaccination Providers (i.e., does not include those deliveries recently received, and intended for use in the coming week).
- Administered – Doses administered as at 26 June 2022.
- Stock on Hand at Sites – Available doses minus Administered doses and a small % wastage.
- The dose utilisation is calculated based on the total doses administered and a small % wastage in line with international standards in relation to total available doses.
- For Commonwealth Vaccination Providers, the doses available for administration is for the full period (up to 26 June 2022).
- Commonwealth Vaccination Providers utilisation is not provided as the in-reach rollout is demand-based.