




**Australian Government**  
**Operation COVID Shield**

# COVID-19 Vaccine Roll-out

25 June 2022

Data as at:  
24 Jun 2022


# Total vaccine doses



**20,104,429**  
people have had at least one dose

---

**>95%**  
of people over the age of 16  
have had at least one dose



**19,768,299**  
people are fully vaccinated

---

**>95%**  
of people over the age of 16 are  
fully vaccinated



**13,859,415**  
people over the age of 16  
who have received three or  
more doses



**60,151,749** total vaccine doses administered nationally as at 24 June

**+39,089** recorded in the last 24 hours

**NSW**  
**18,661,452**  
(+12,713 daily increase)

**VIC**  
**15,780,872**  
(+9,052 daily increase)

**QLD**  
**11,373,465**  
(+7,224 daily increase)

**WA**  
**6,615,289**  
(+3,860 daily increase)

**TAS**  
**1,364,593**  
(+1,081 daily increase)

**SA**  
**4,185,135**  
(+3,727 daily increase)

**ACT**  
**1,576,131**  
(+1,150 daily increase)

**NT**  
**594,812**  
(+282 daily increase)

\*Administration state breakdown indicates state in which a vaccine was administered

\*\*Overall dose count includes instances of more than three doses per person in a small number of cases.

Source: Australian Immunisation Register

# Booster Vaccinations

Data as at:  
24 Jun 2022



**225,245**

Indigenous people who have received three or more doses

**53.9%**

of eligible population (418,261)



**167,056**

Aged Care Residents who have received three or more doses##

**94.7%**

of eligible population (176,468)



**192,543**

NDIS participants

who have received three or more doses#

**75.0%**

of eligible population (256,000)

**22,223**

NDIS residents

who have received three or more doses#

**89.6%**

of eligible population (24,000)



**13,859,415**

total people who have received three or more doses

**+6,685** daily increase

**70.4%** of eligible population (19,684,112)

	Number of People	Daily Increase	% of Eligible
NSW	4,229,099	2,307	67.9%
VIC	3,695,938	1,463	72.7%
QLD	2,401,113	1,254	63.4%
WA	1,700,681	598	82.9%
SA	991,219	766	73.9%
TAS	317,007	182	72.9%
ACT	273,677	86	78.9%
NT	131,308	68	78.1%

\*People may belong to multiple groups and could be represented in the above breakdowns multiple times.  
# NDIS participants data as at 22 June 2022. ## Aged Care Residents data as at 24 June 2022.

Source: Australian Immunisation Register

**119,373** doses administered to persons residing in other territories or with missing residential information

# Winter / Fourth Doses

Data as at:  
24 Jun 2022



**2,248,325** total people (16+) who have received four or more doses

**+28,392** daily increase



**1,986,941**

People aged 65+ who have received four or more doses

**56.8%**

of eligible population (3,496,600)

	Number of People 16+	Daily Increase
ACT	43,527	365
NSW	727,432	9,207
NT	9,785	161
QLD	426,451	5,361
SA	182,682	2,647
TAS	62,788	831
VIC	561,864	6,711
WA	222,910	2,973

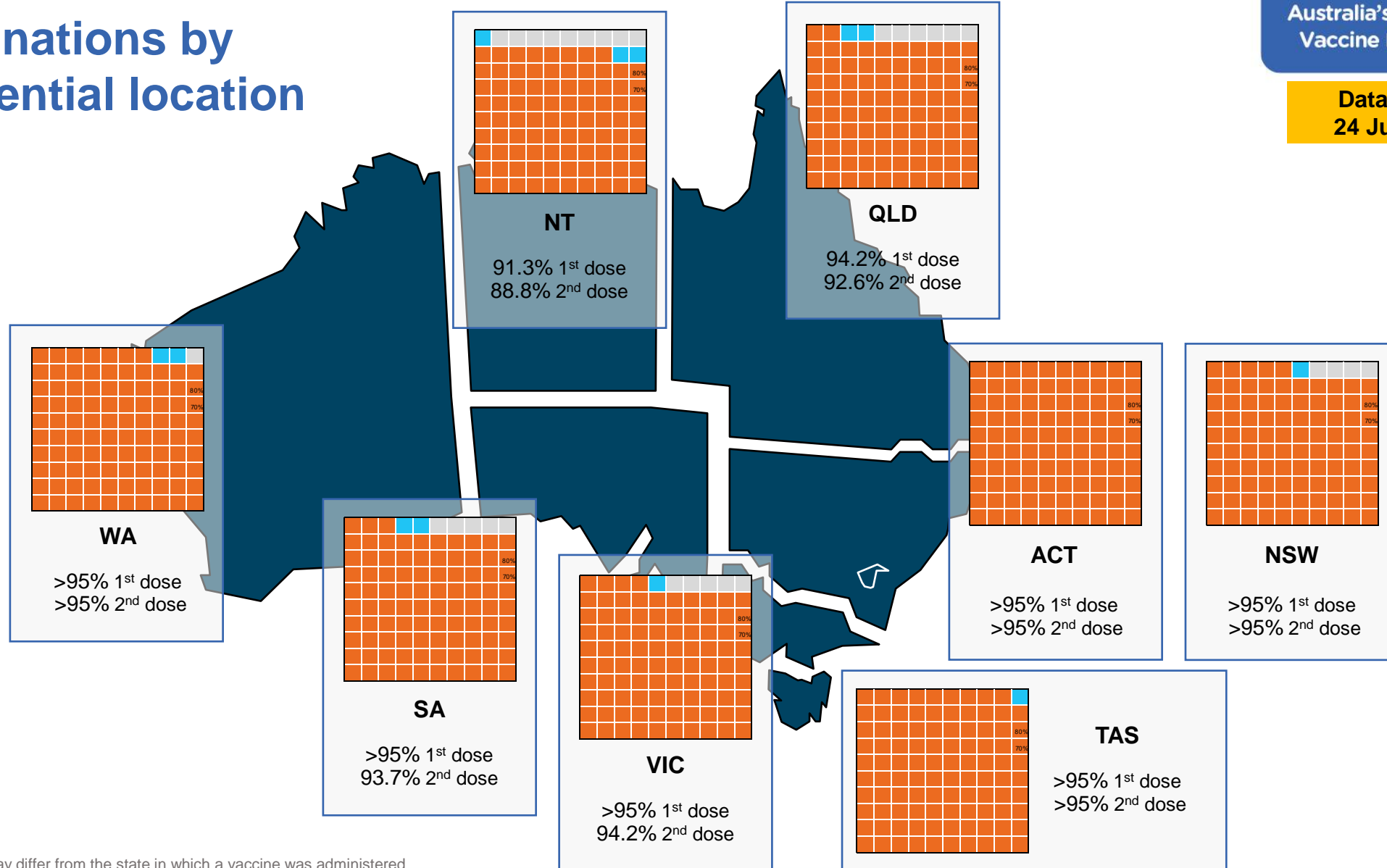
**10,886** doses administered to persons residing in other territories or with missing residential information

\*People become eligible for a winter booster four months after their third dose.

Source: Australian Immunisation Register

Data as at:  
24 Jun 2022

# Vaccinations by residential location



\*Residential state may differ from the state in which a vaccine was administered

# Commonwealth and Jurisdiction vaccine doses administered

Data as at:  
24 Jun 2022



**60,151,749** total vaccine doses administered nationally as at 24 June

**+ 39,089** recorded in the last 24 hours

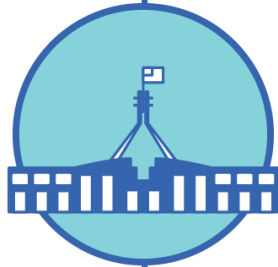


**21,288,407**

doses administered by state and territory facilities

**+ 3,366**

recorded in the last 24 hours



**38,863,342**

doses administered by commonwealth facilities

**+ 35,723**

recorded in the last 24 hours

**37,547,900** total vaccine doses administered in primary care settings

**1,315,442** total vaccine doses administered in aged care and disability settings

NSW	Jurisdictions	Commonwealth
Cumulative	5,140,770	13,520,682
Daily increase	357	12,356

VIC	Jurisdictions	Commonwealth
Cumulative	6,129,696	9,651,176
Daily increase	877	8,175

QLD	Jurisdictions	Commonwealth
Cumulative	3,861,270	7,512,195
Daily increase	343	6,881

WA	Jurisdictions	Commonwealth
Cumulative	2,530,714	4,084,575
Daily increase	430	3,430

TAS	Jurisdictions	Commonwealth
Cumulative	628,187	736,406
Daily increase	89	992

SA	Jurisdictions	Commonwealth
Cumulative	1,844,110	2,341,025
Daily increase	679	3,048

ACT	Jurisdictions	Commonwealth
Cumulative	806,512	769,619
Daily increase	532	618

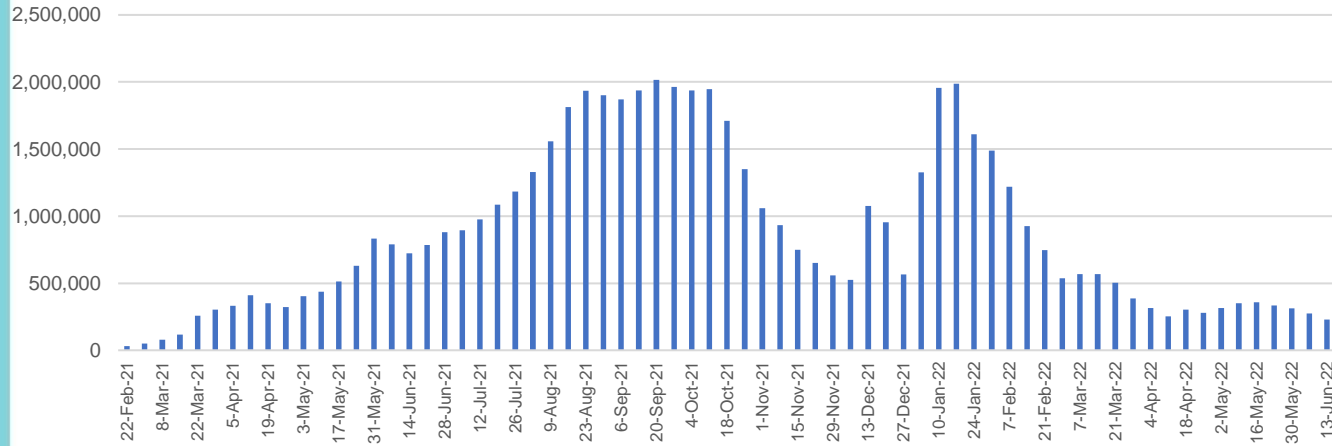
NT	Jurisdictions	Commonwealth
Cumulative	347,148	247,664
Daily increase	59	223

# Vaccine milestone charts

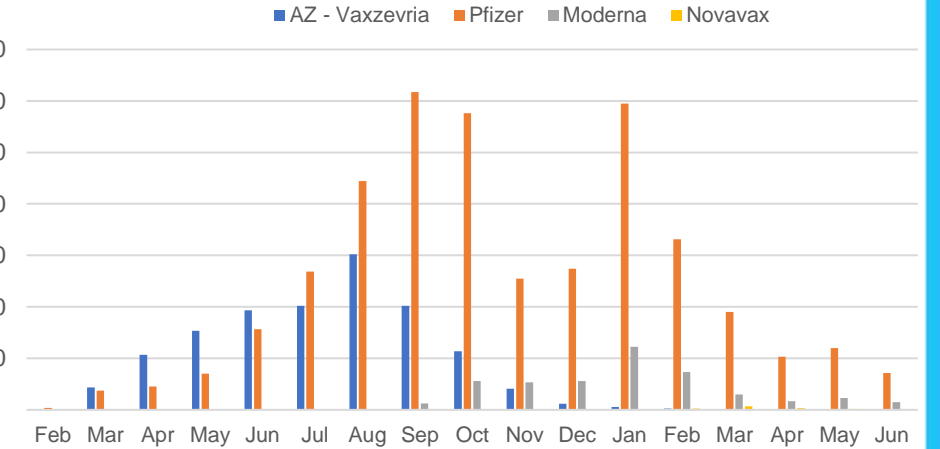
Data as at:  
24 Jun 2022

Australia's COVID-19  
Vaccine Roadmap

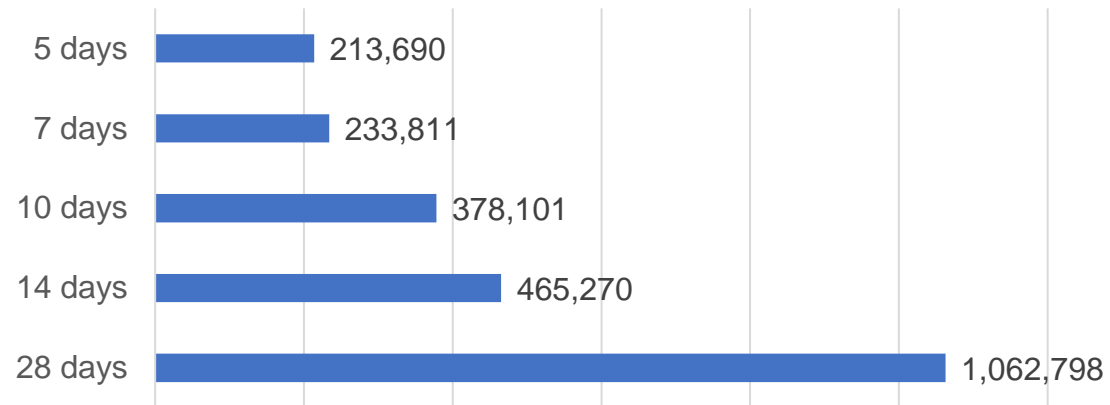
Doses Administered by Week



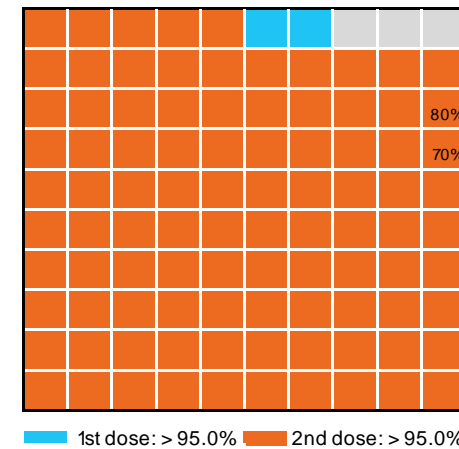
Doses by administration month and vaccine type



Doses Reported



Eligible population percentage coverage



\*Each square represents 1% of the national population. Squares are filled as milestones are achieved.

\*Sourced from the Australian Immunisation Register.

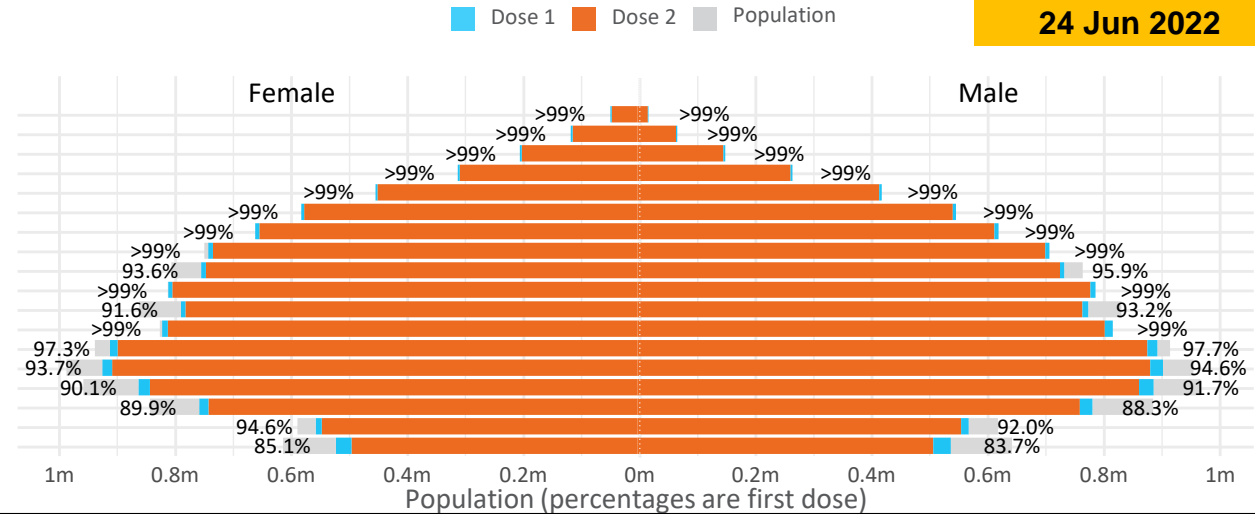
# Doses by age and sex

First and second doses by age and sex

	16+	50+	12-15	5-11
Dose 1	97.50% (20,104,429 doses / 20,619,959 people)	>99% (8,923,441 doses / 8,749,703 people)	84.40% (1,049,917 doses / 1,243,990 people)	52.35% (1,191,905 doses / 2,276,638 people)
Dose 2	95.87% (19,768,299 doses / 20,619,959 people)	>99% (8,815,921 doses / 8,749,703 people)	79.88% (993,682 doses / 1,243,990 people)	39.44% (897,879 doses / 2,276,638 people)

Data as at: 24 Jun 2022

Age	Dose 1	Dose 2
95+	65,497 (>99%)	62,046 (>99%)
90-94	181,931 (>99%)	176,439 (>99%)
85-89	350,990 (>99%)	344,221 (>99%)
80-84	571,694 (>99%)	564,558 (>99%)
75-79	865,073 (>99%)	856,628 (>99%)
70-74	1,118,956 (>99%)	1,107,613 (>99%)
65-69	1,270,825 (>99%)	1,256,040 (>99%)
60-64	1,438,136 (>99%)	1,421,713 (99.0%)
55-59	1,475,582 (94.9%)	1,458,876 (93.8%)
50-54	1,584,757 (>99%)	1,567,787 (>99%)
45-49	1,550,882 (92.5%)	1,532,490 (91.4%)
40-44	1,625,697 (>99%)	1,601,691 (98.9%)
35-39	1,793,675 (97.7%)	1,761,454 (96.0%)
30-34	1,819,569 (94.6%)	1,777,569 (92.4%)
25-29	1,743,707 (91.5%)	1,695,915 (89.0%)
20-24	1,531,719 (89.5%)	1,491,517 (87.1%)
16-19	1,115,739 (93.3%)	1,091,742 (91.3%)
12-15	1,049,917 (84.4%)	993,682 (79.9%)



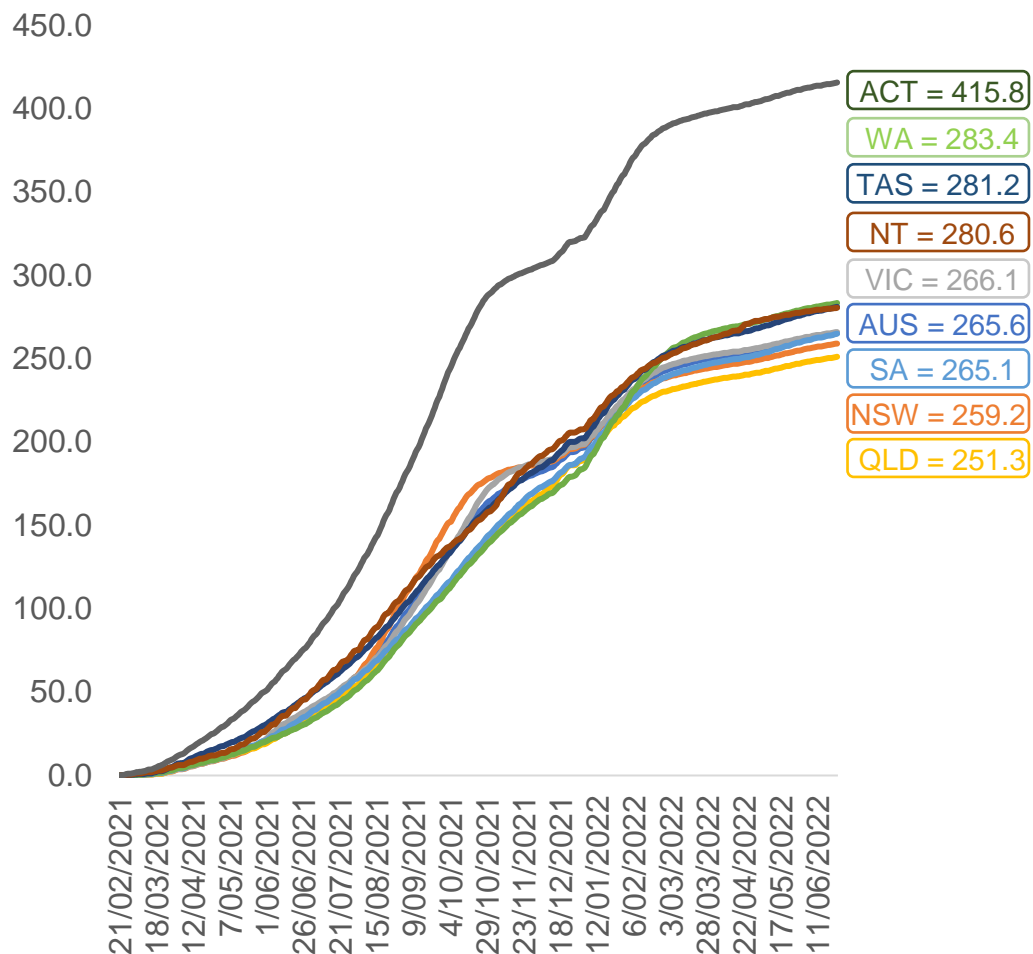
	AUS	ACT	NSW	NT	QLD	SA	TAS	VIC	WA
16 and over - dose 1	20,104,429	353,330	6,340,766	173,945	3,872,164	1,378,587	445,923	5,173,412	2,099,724
16 and over - dose 2	19,768,299	347,616	6,242,811	169,266	3,808,436	1,349,307	436,917	5,095,028	2,068,664
16 and over - population	20,619,959*	344,037	6,565,651	190,571	4,112,707	1,440,400	440,172	5,407,574	2,114,978
16 and over % with dose 1	97.50%	>99%	96.57%	91.28%	94.15%	95.71%	>99%	95.67%	>99%
16 and over % with dose 2	95.87%	>99%	95.08%	88.82%	92.60%	93.68%	>99%	94.22%	97.81%
5 to 11 - dose 1	1,191,905	31,775	356,019	13,141	206,335	83,725	28,441	324,519	140,299
5 to 11 - dose 2	897,879	27,283	274,451	8,768	149,439	63,233	23,048	245,116	101,918
5 to 11 - population	2,276,638	39,789	716,460	24,750	478,731	148,816	45,033	578,499	244,154
5 to 11 % with dose 1	52.35%	79.86%	49.69%	53.09%	43.10%	56.26%	63.16%	56.10%	57.46%
5 to 11 % with dose 2	39.44%	68.57%	38.31%	35.43%	31.22%	42.49%	51.18%	42.37%	41.74%
12 to 15 - dose 1	1,049,917	20,127	322,768	10,758	205,746	68,238	22,879	274,363	115,578
12 to 15 - dose 2	993,682	19,571	308,338	9,708	192,164	64,467	21,758	262,472	106,982
12 to 15 - population	1,243,990	19,693	390,330	13,060	270,146	82,747	26,308	308,611	132,869
12 to 15 % with dose 1	84.40%	>99%	82.69%	82.37%	76.16%	82.47%	86.97%	88.90%	86.99%
12 to 15 % with dose 2	79.88%	>99%	78.99%	74.33%	71.13%	77.91%	82.70%	85.05%	80.52%

\*National population will not equal sum of listed jurisdictions due to a small number of people counted in national population residing in some 'other' territories. Sum of state doses will not add to national total as some records are unable to be geocoded to a State or Territory. Doses sourced from Australian Immunisation Register, population from ABS ERP June 2020



# Vaccinations by location

Cumulative total doses administered vs eligible state populations\*

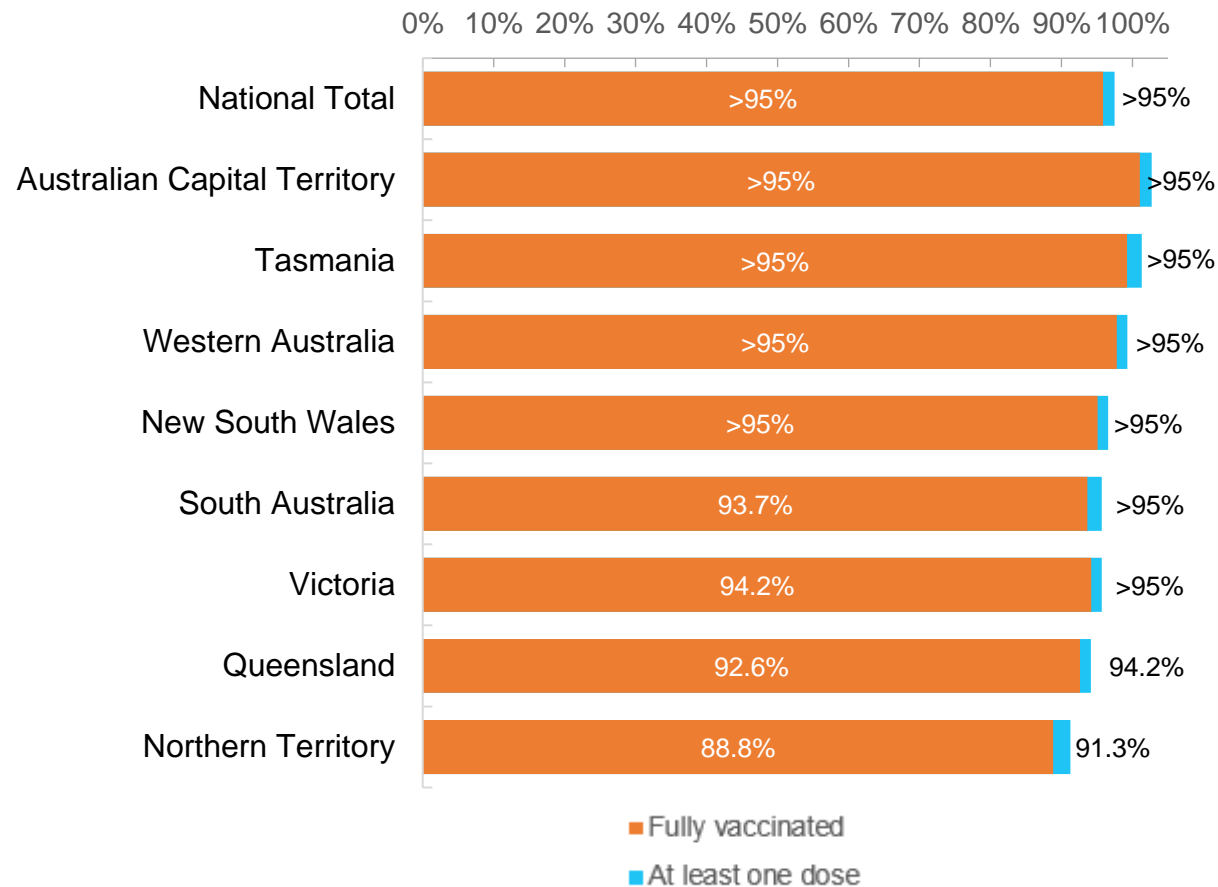


\*Not an indication of percentage vaccinated, numbers will exceed 100 due to multiple doses required per person of the population. All doses are included for those aged 12 and above, and are based on vaccination provider location.

Data as at:  
24 Jun 2022

Australia's COVID-19  
Vaccine Roadmap

First and Second Doses by residential location



# Aboriginal and Torres Strait Islander peoples

## Number of people vaccinated

Data as at:  
21 Jun 2022  
Updated weekly

Australia's COVID-19  
Vaccine Roadmap



**443,167**

people over the age of 16  
have had at least one dose

**85.0%**

of people over the age of 16  
have had at least one dose



**424,803**

people over the age of 16  
are fully vaccinated

**81.5%**

of people over the age of 16 are  
fully vaccinated



People aged 12 – 15 years

**47,996**

**42,134**

**67.9%**

**59.6%**

At least one dose

Fully vaccinated

### 178 Aboriginal community controlled health services (ACCHS)

0#	50	27	44	12	3	21	21
<b>ACT</b>	<b>NSW</b>	<b>NT</b>	<b>QLD</b>	<b>SA</b>	<b>TAS</b>	<b>VIC</b>	<b>WA</b>

Medicare Address State <sup>##</sup>	Individuals Dose 1	Individuals Dose 1 %	Individuals Dose 2	Individuals Dose 2 %
Australian Capital Territory	4,794	91.8%	4,674	89.5%
New South Wales	135,960	87.3%	132,912	85.4%
Northern Territory	41,475	89.7%	39,500	85.4%
Queensland	116,474	81.8%	111,127	78.1%
South Australia	20,061	80.5%	18,679	75.0%
Tasmania	13,895	88.8%	13,496	86.3%
Victoria	35,660	90.4%	34,885	88.4%
Western Australia	53,563	86.8%	49,891	80.8%
Unknown/Other Territories	21,285	70.3%	19,639	64.9%
<b>Totals</b>	<b>443,167</b>	<b>85.0%</b>	<b>424,803</b>	<b>81.5%</b>

Source: Australian Immunisation Register

\*Identifying as Aboriginal and Torres Strait Islander is optional and the estimated population may be under reported.

\*\*Includes all Aboriginal and Torres Strait Islander peoples who have received a vaccination, not limited to those administered in an ACCHS setting

#ACCHS in the ACT are currently operating as a Commonwealth Vaccine Clinics so not included to avoid double counting

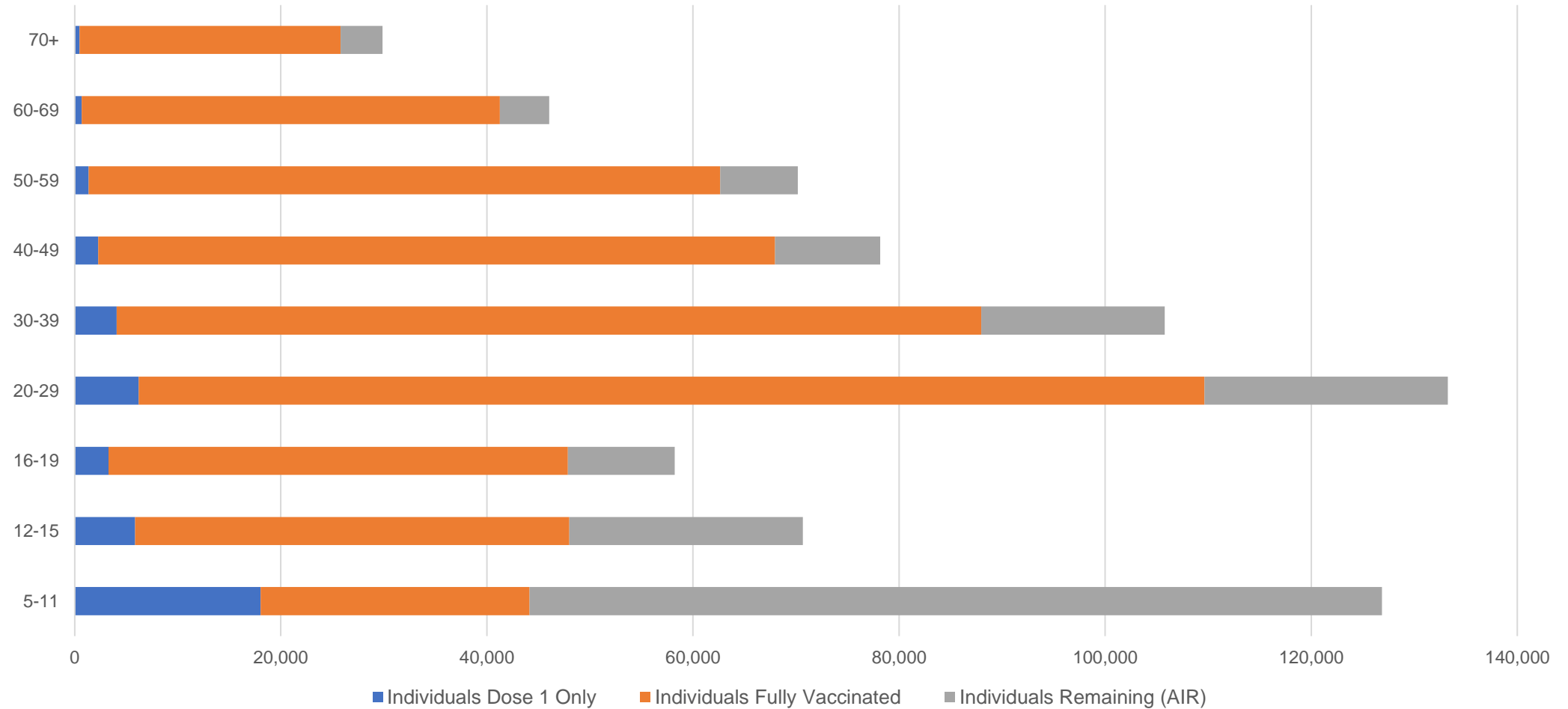
##The above table includes all identified Aboriginal and Torres Strait Islander people who are aged 16 and above by their state of residence.

# Aboriginal and Torres Strait Islander peoples

## Number of people vaccinated by age

Data as at:  
21 Jun 2022  
Updated weekly

Australia's COVID-19  
Vaccine Roadmap



Source: Australian Immunisation Register

# Commonwealth primary care

Data as at:  
24 Jun 2022

Australia's COVID-19  
Vaccine Roadmap



## Primary care vaccine administration sites

<b>5,704</b>	<b>128</b>	<b>178</b>	<b>3,611</b>
GPs	CVCs	ACCHS	Pharmacies



**37,547,900** total vaccine doses administered  
primary care settings as at 24 June  
**+ 35,227** recorded in the last 24 hours

## Primary care vaccinations by provider type

	Doses administered	Daily increase	7 day increase
<b>General Practice*</b> includes other Commonwealth	30,016,080	23,843	144,501
<b>Pharmacy</b>	7,531,820	11,384	63,619

**NSW**  
**12,948,713**  
(+12,116 daily increase)

**VIC**  
**9,318,870**  
(+8,028 daily increase)

**QLD**  
**7,227,847**  
(+7,071 daily increase)

**WA**  
**3,943,956**  
(+3,412 daily increase)

**TAS**  
**715,278**  
(+954 daily increase)

**SA**  
**2,259,379**  
(+3,136 daily increase)

**ACT**  
**593,445**  
(+487 daily increase)

**NT**  
**221,938**  
(+217 daily increase)

**318,474**

doses administered to persons residing in other territories or with missing residential information

\*General practice includes Commonwealth Vaccination Clinics, Aboriginal Community Health Centres, Royal Flying Doctor Service and other Commonwealth vaccination facilities

Source: Australian Immunisation Register

Data as at:  
24 Jun 2022

# Commonwealth aged care and disability doses administered



**1,315,442** (+ 496 last 24 hours)

Total vaccine doses administered in aged care and disability facilities as at 24 June

Number of doses administered as part of the Commonwealth aged and disability care rollout

**NSW**  
**571,990**  
(+178 daily increase)

**VIC**  
**247,382**  
(+103 daily increase)

**QLD**  
**209,196**  
(+59 daily increase)

**WA**  
**112,069**  
(+96 daily increase)

**TAS**  
**23,663**  
(+17 daily increase)

**SA**  
**86,325**  
(+16 daily increase)

**ACT**  
**17,906**  
(<10 daily increase)

**NT**  
**7,712**  
(<10 daily increase)

**39,199**

doses administered to persons residing in other territories or with missing residential information

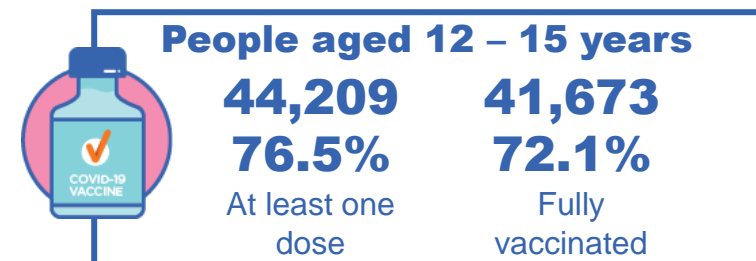
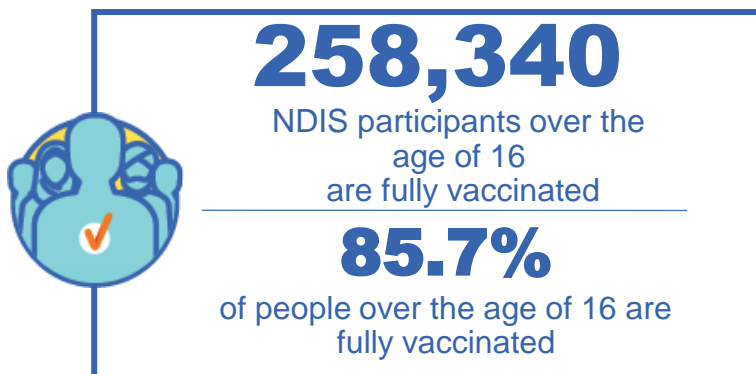
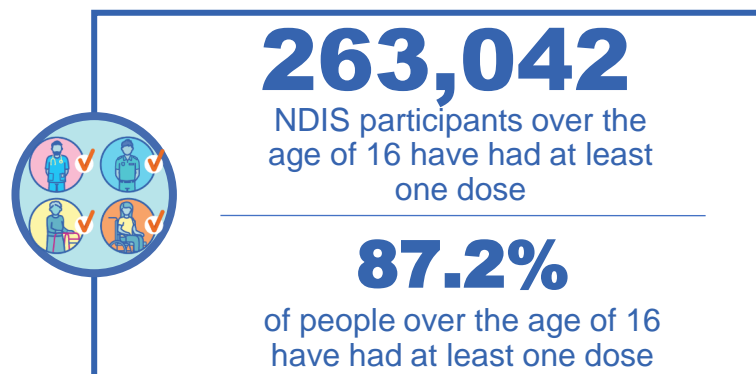
Source: Australian Immunisation Register

\*Sourced from the Australian Immunisation Register. Includes all persons vaccinated at participating residential aged care, disability and related industry settings.  
\*\*State level breakdown indicates the residential location and may not align to the state in which the vaccination occurred.

# National Disability Insurance Scheme (NDIS) reported vaccinations

Data as at:  
23 June 2022  
Updated weekly

Australia's COVID-19  
Vaccine Roadmap



## NDIS participant vaccinations

	People aged 16+ with at least one dose	People aged 16+ fully vaccinated	% People aged 16+ with at least one dose	% People aged 16+ fully vaccinated
ACT	4,947	4,883	<b>89.2%</b>	<b>88.0%</b>
NSW	80,502	79,224	<b>87.7%</b>	<b>86.3%</b>
NT	2,294	2,224	<b>78.6%</b>	<b>76.2%</b>
QLD	52,167	51,187	<b>85.6%</b>	<b>84.0%</b>
SA	21,558	21,056	<b>85.1%</b>	<b>83.1%</b>
TAS	6,573	6,421	<b>87.5%</b>	<b>85.4%</b>
VIC	69,861	68,712	<b>88.4%</b>	<b>86.9%</b>
WA	25,140	24,633	<b>88.6%</b>	<b>86.8%</b>
<b>National</b>	<b>263,042</b>	<b>258,340</b>	<b>87.2%</b>	<b>85.7%</b>

Source: Linkage between National Disability Insurance Agency data and the Australian Immunisation Register. Total NDIS participant numbers as at 30 May. Australian Immunisation Register data as at 22 June. Includes all participants regardless of residence type.

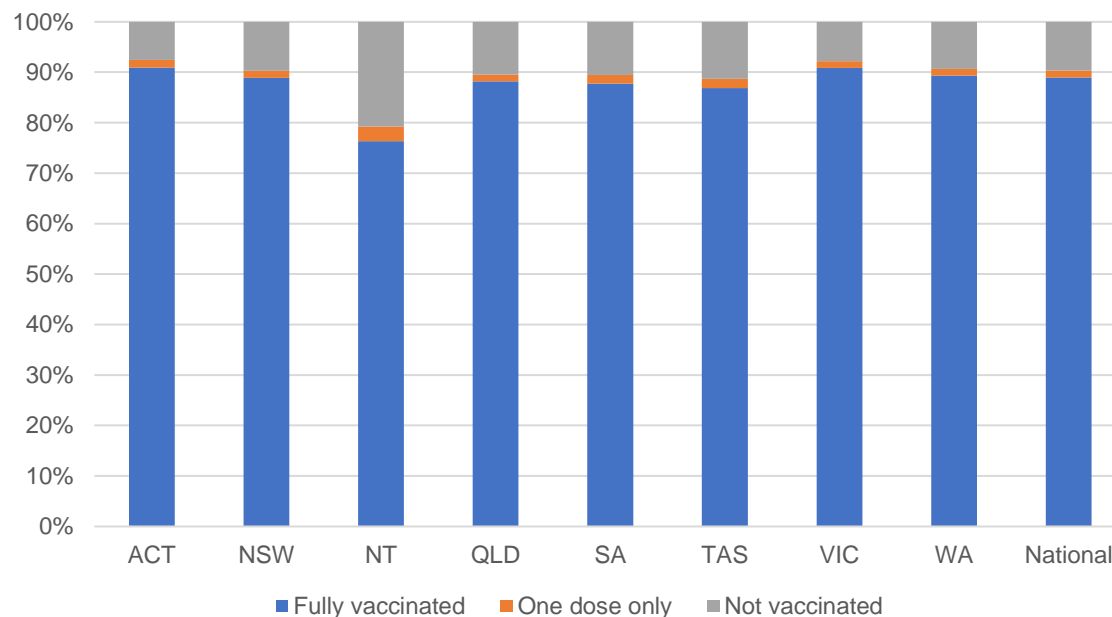
# National Disability Insurance Scheme (NDIS) reported vaccinations

Data as at:  
23 June 2022  
Updated weekly

Australia's COVID-19  
Vaccine Roadmap

NATIONAL	Total people with at least one dose	People fully vaccinated	Total number of individuals in cohort	% People with at least one dose	% People fully vaccinated
NDIS participants living in disability accommodation	21,281	20,951	23,469	90.7%	89.3%

## NDIS participants in disability and aged care accommodation



Source: Linkage between National Disability Insurance Agency data and the Australian Immunisation Register. Includes participants residing in disability accommodation only.

Source: Total NDIS participant numbers as at 30 May. Participant data as at 22 June. Australian Immunisation Register data as at 22 June. Worker data as at 22 June.

## NDIS workforce vaccinations

	NDIS workers with at least one dose	NDIS workers fully vaccinated	% NDIS workers with at least one dose	% NDIS workers fully vaccinated
NSW	127,095	121,926	98.2%	94.2%
VIC	117,929	114,833	98.4%	95.8%
QLD	71,391	70,541	97.9%	96.7%
WA	34,499	33,049	98.9%	94.7%
SA	35,917	34,032	98.6%	93.4%
TAS	10,865	10,650	99.5%	97.5%
ACT	12,333	12,306	99.8%	99.6%
NT	3,968	3,808	99.6%	95.6%
<b>TOTAL</b>	<b>413,997</b>	<b>401,145</b>	<b>98.4%</b>	<b>95.3%</b>

Source: the NDIS Commission has established a requirement for registered NDIS providers who provide intensive disability support services to report on the vaccination status of workers they employ, or otherwise engage, to deliver NDIS-funded supports and services, and who are required to be vaccinated in accordance with in-force state and territory public health orders. The statistics reflect data reported to the NDIS Commission by registered NDIS providers and should be considered indicative and subject to change

Note: Some registered NDIS providers are yet to report on the vaccination status of their workforce. The NDIS Commission is working with those providers around reporting requirements.

Remaining workers not included include those exempt from vaccination requirements, workers whose vaccination status is not yet verified by the provider (such as workers on leave) and provider reporting anomalies.

# Residential aged care vaccination rollout

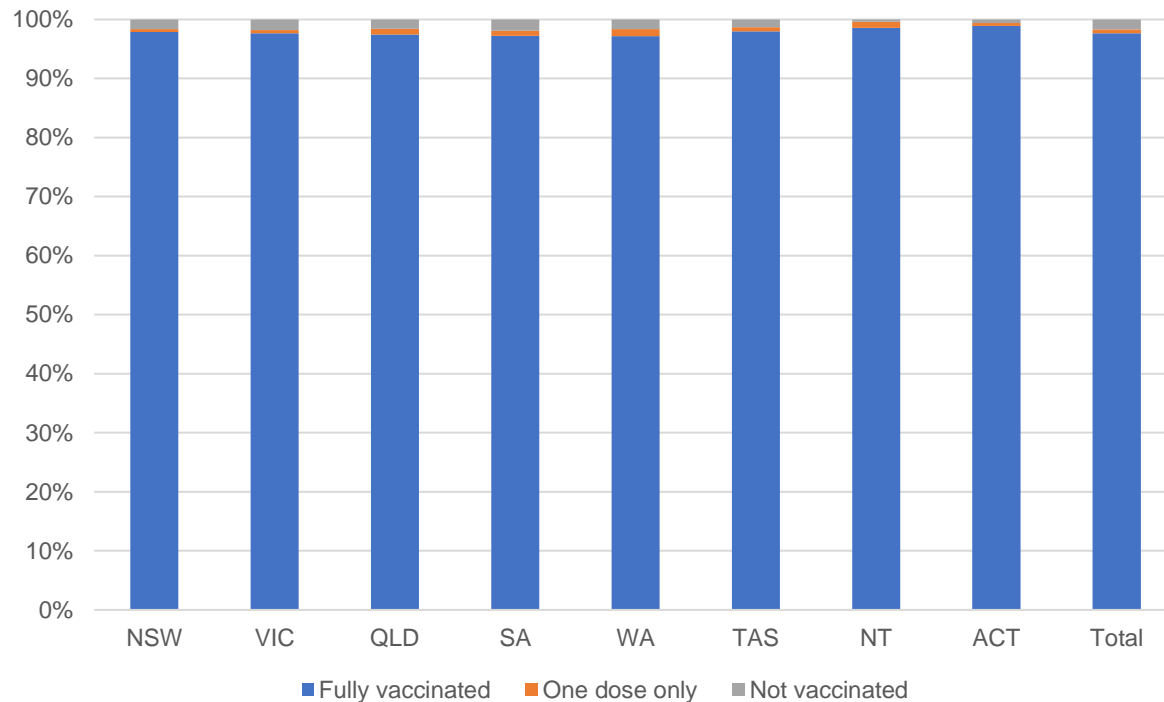
Data as at:  
23 June 2022  
Updated weekly

Residential aged care facilities status

**176,468** **177,715**

People fully vaccinated      People with at least one dose

## Aged care resident vaccinations



## Aged care worker vaccinations

Jurisdictions	Total workers with at least one dose	Workers fully vaccinated	% Workers with at least one dose	% Workers fully vaccinated
NSW	77,595	77,467	99.9%	99.7%
VIC	70,793	70,792	99.5%	99.5%
QLD	48,401	48,399	99.7%	99.7%
SA	27,006	26,998	100.0%	100.0%
WA	24,599	24,595	100.0%	100.0%
TAS	7,544	7,544	100.0%	100.0%
NT	934	934	100.0%	100.0%
ACT	2,921	2,921	100.0%	100.0%
<b>Total</b>	<b>259,793</b>	<b>259,650</b>	<b>99.8%</b>	<b>99.7%</b>

Source: Residential aged care provider self-reported COVID-19 vaccination information

\*Status updates are provided by facilities at least once per week. Reporting is updated Monday to Friday to encompass different facility updates being made on different days.

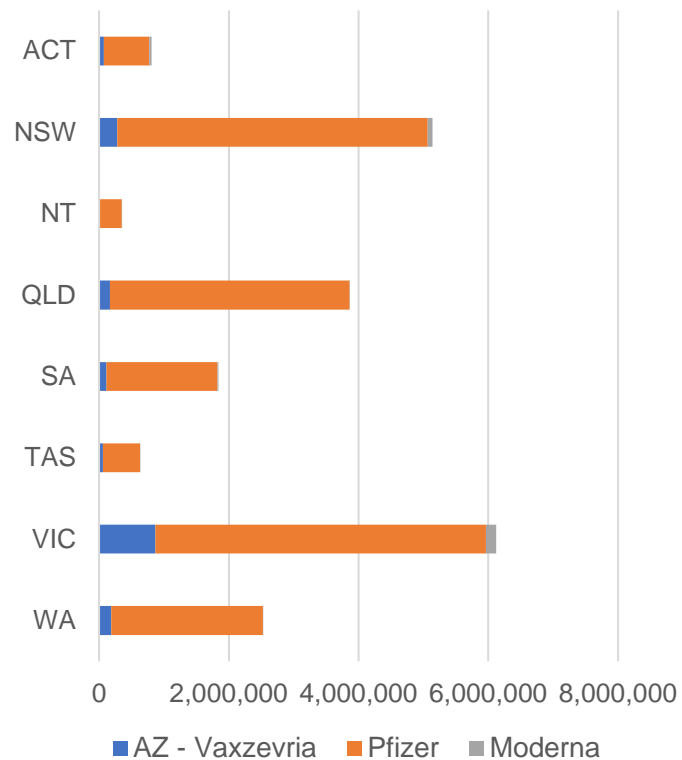
Data is sourced directly from Aged Care Service Providers and is not drawn or closely aligned with data from AIR due to inconsistencies and potential lags in uploading of records.



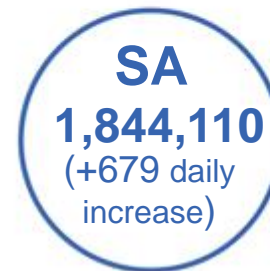
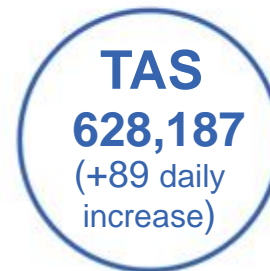
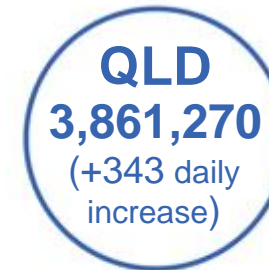
Data as at:  
24 Jun 2022

## Jurisdiction administered

Total vaccine doses administered in State and Territory clinics as at 24 June



**21,288,407** total vaccine doses administered in State and Territory clinics as at 24 June  
 + **3,366** recorded in the last 24 hours  
 + **22,705** recorded in the last 7 days

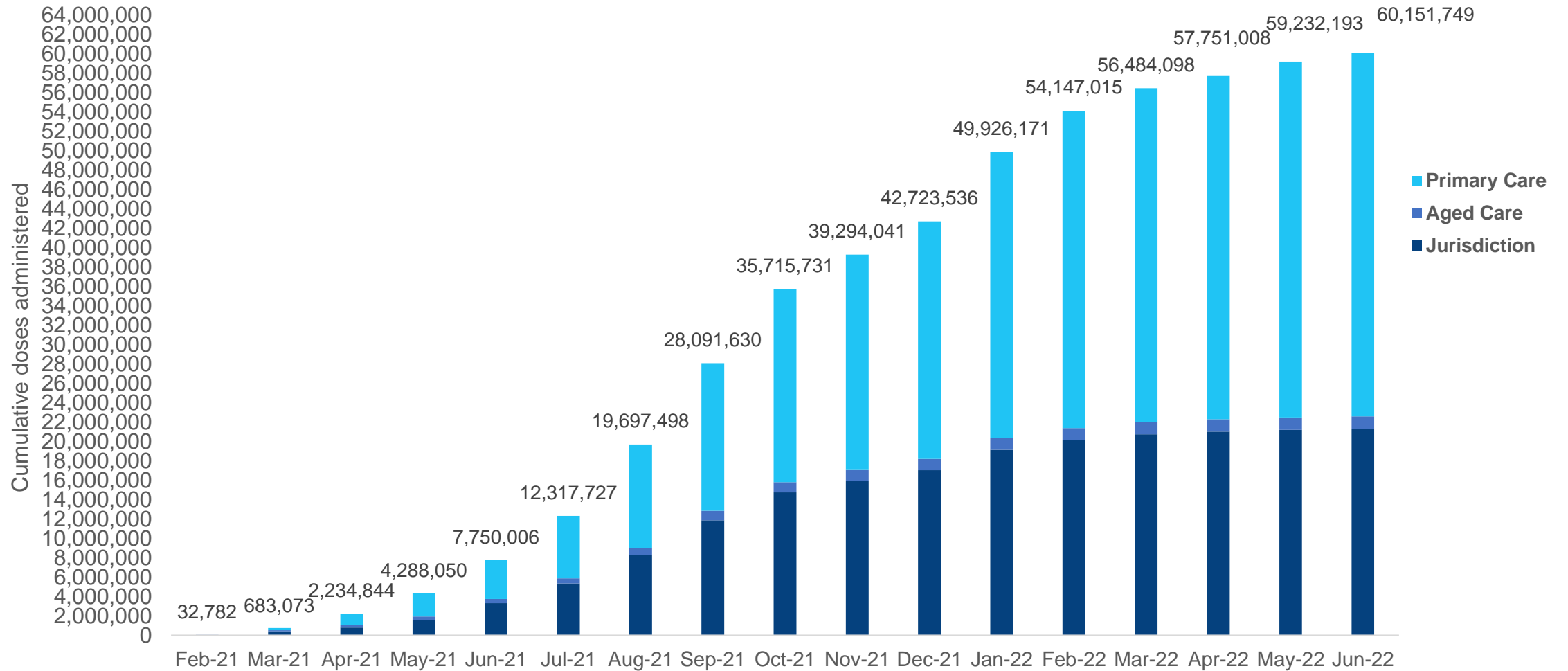


\*Sourced from the Australian Immunisation Register. Numbers are calculated as difference in daily cumulative reported numbers to allow for historical corrections.

Source: Australian Immunisation Register

# Cumulative doses administered by channel

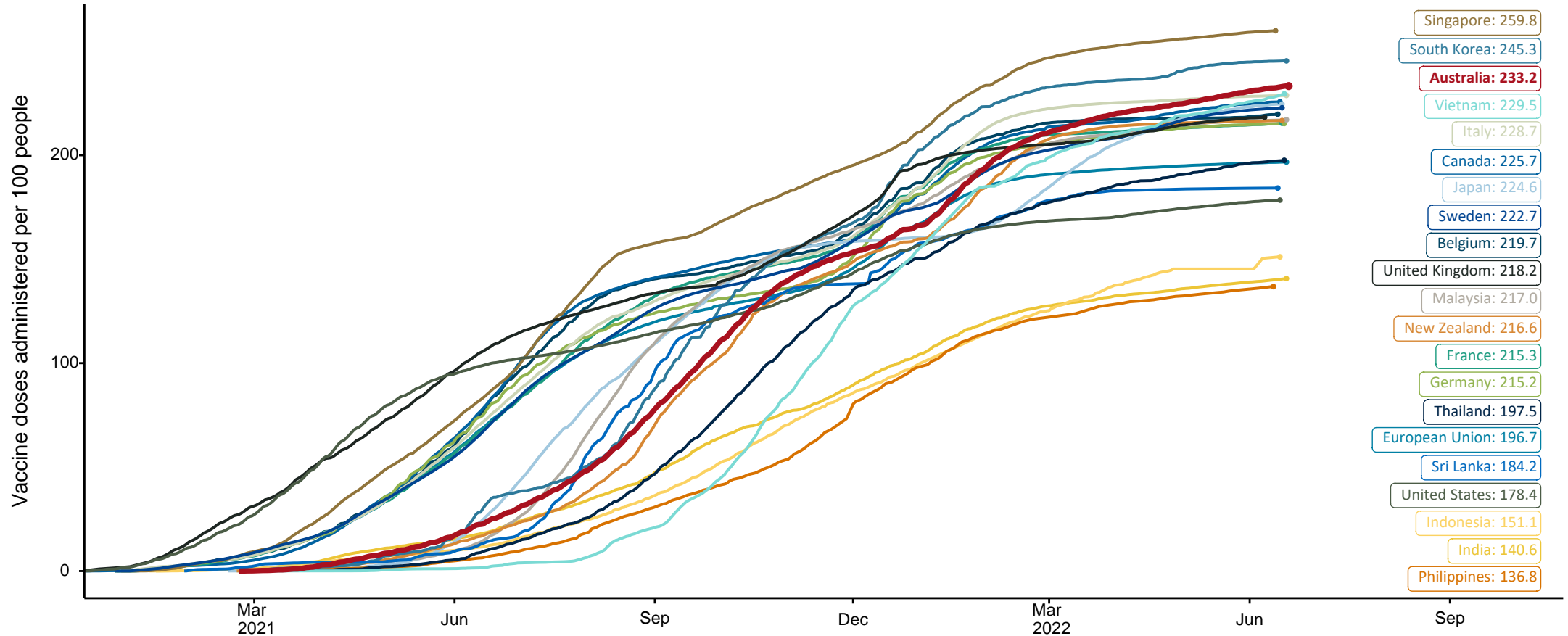
Data as at:  
24 Jun 2022



Source: Australian Immunisation Register

# COVID-19 vaccine doses per 100, Australia and select countries

Data as at:  
19 June 2022  
Updated weekly

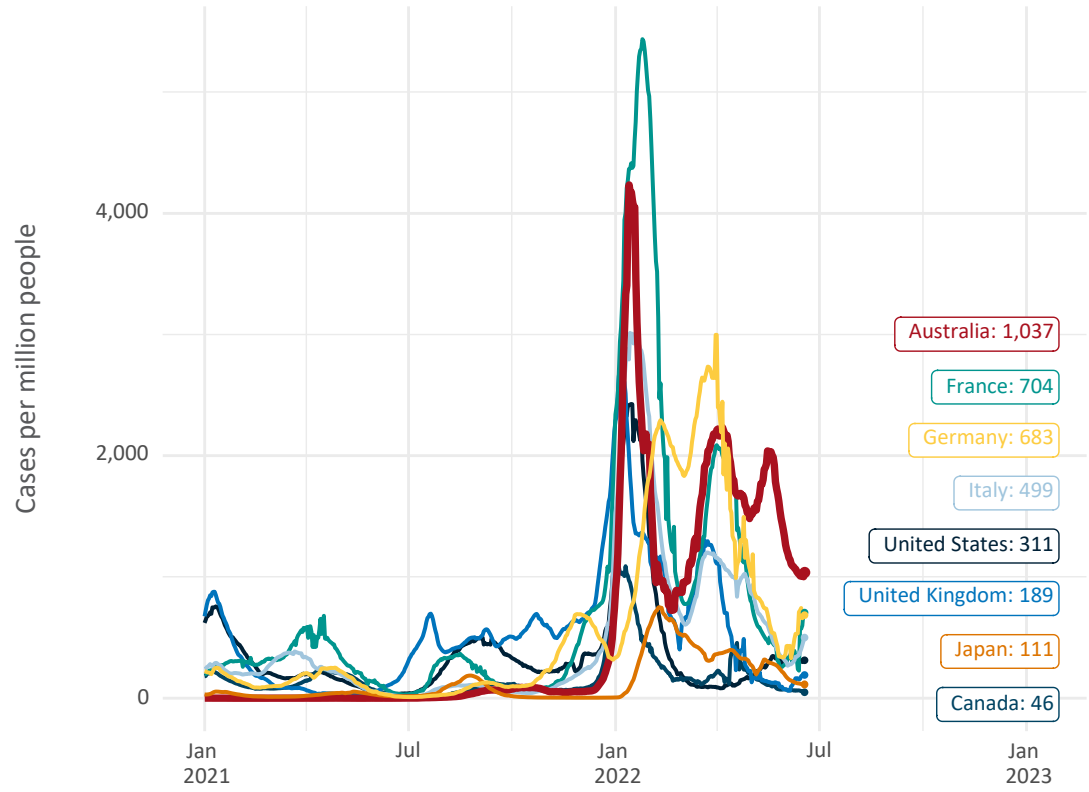


Note: From 11 January 2022, data for Australia includes all doses administered to people 5 and over. Prior to 11 January, data was for 12 and over.  
Source: Department of Health (Australia), Our World in Data (international)  
Latest data: 19 June

Data as at:  
19 June 2022  
Updated weekly

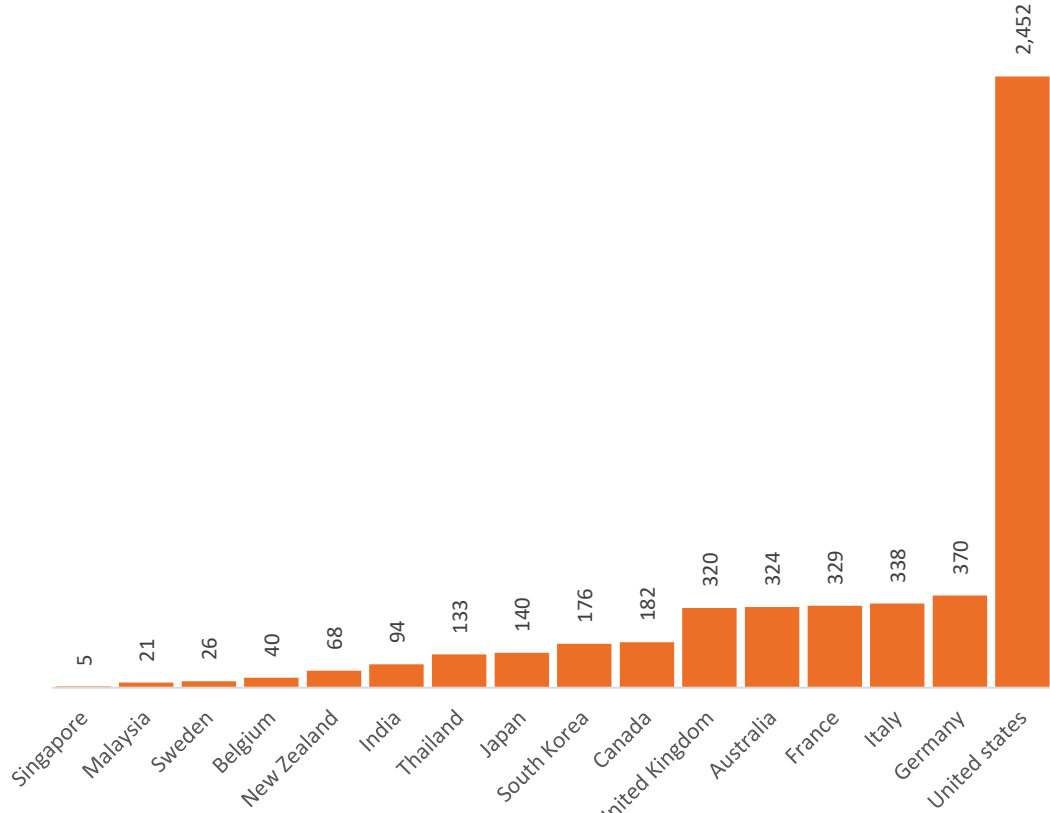
# International data – COVID-19

New daily cases per million since 2021, Australia and G7 countries  
Smoothed - 7 day average



Source: OWID  
Data downloaded: 20 Jun 2022 09:21  
Latest data: 18 Jun 2022

COVID-19 deaths in past 7 days - Australia and select countries



Source: OWID  
Data downloaded: 20 Jun 2022 09:21  
Latest data: 18 Jun 2022