



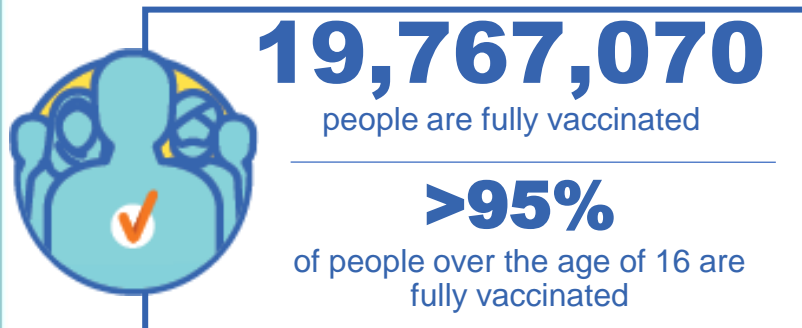
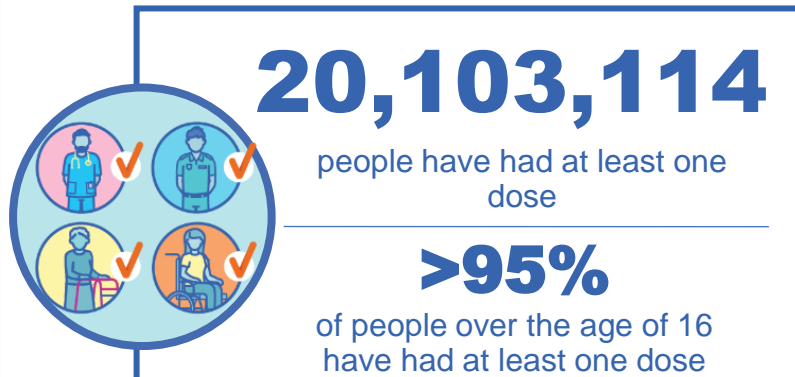
Australian Government
Operation COVID Shield

COVID-19 Vaccine Roll-out

24 June 2022

Data as at:
23 Jun 2022

Total vaccine doses



60,112,660 total vaccine
doses administered nationally as at 23 June

+45,251 recorded in the last 24 hours

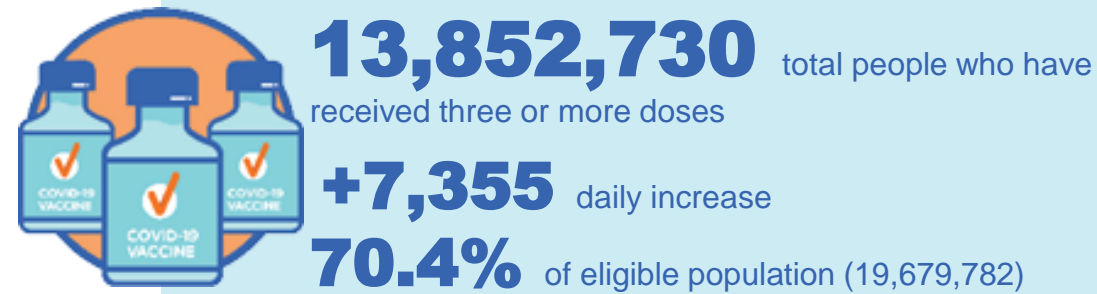
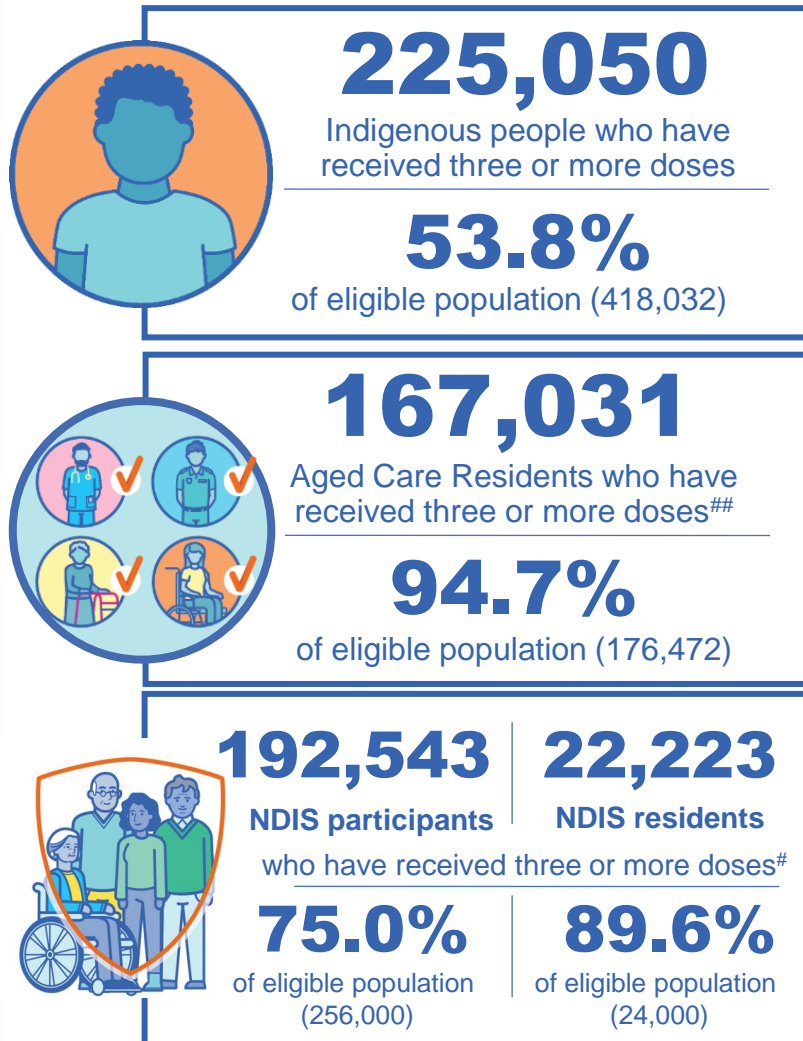


*Administration state breakdown indicates state in which a vaccine was administered

**Overall dose count includes instances of more than three doses per person in a small number of cases.

Source: Australian Immunisation Register

Booster Vaccinations



Data as at:
23 Jun 2022

	Number of People	Daily Increase	% of Eligible
NSW	4,226,792	2,493	67.9%
VIC	3,694,475	1,660	72.7%
QLD	2,399,859	1,380	63.4%
WA	1,700,083	555	82.9%
SA	990,453	752	73.9%
TAS	316,825	176	72.9%
ACT	273,591	101	78.9%
NT	131,240	32	78.1%

*People may belong to multiple groups and could be represented in the above breakdowns multiple times.
NDIS participants data as at 22 June 2022. ## Aged Care Residents data as at 23 June 2022.

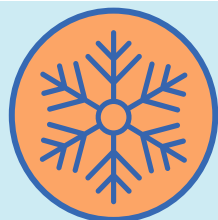
Source: Australian Immunisation Register

119,412 doses administered to persons residing in other territories or with missing residential information

Winter / Fourth Doses

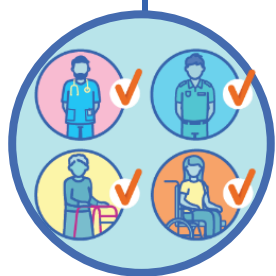
Data as at:
23 Jun 2022

Australia's COVID-19
Vaccine Roadmap



2,219,933 total people (16+) who have received four or more doses

+33,983 daily increase



1,963,131

People aged 65+ who have
received four or more doses

56.5%

of eligible population (3,474,591)

	Number of People 16+	Daily Increase
ACT	43,162	534
NSW	718,225	11,539
NT	9,624	123
QLD	421,090	6,386
SA	180,035	2,763
TAS	61,957	842
VIC	555,153	8,290
WA	219,937	3,327

10,750 doses administered to persons
residing in other territories or with
missing residential information

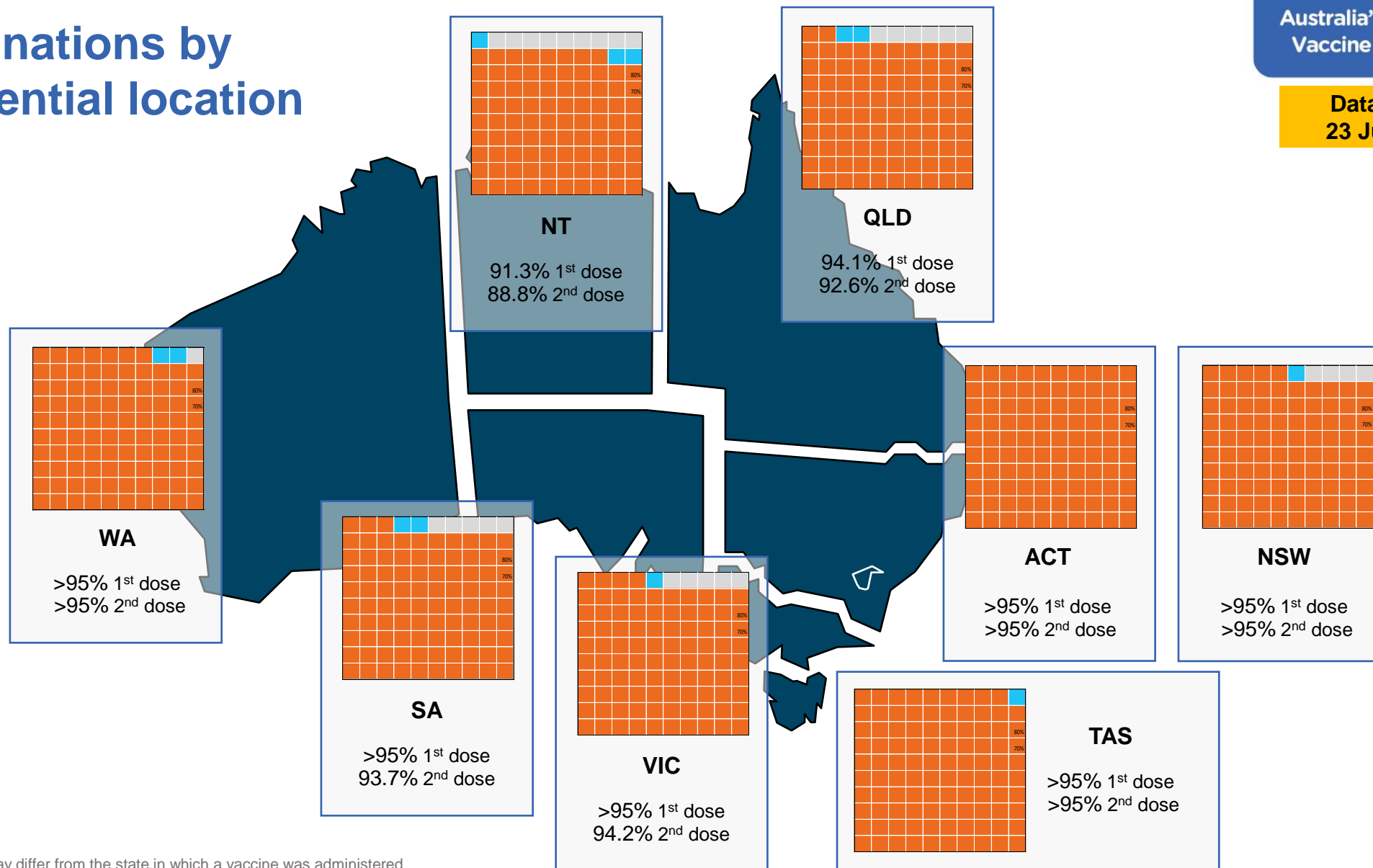
*People become eligible for a winter booster four months after their third dose.

Source: Australian Immunisation Register

Vaccinations by residential location

Australia's COVID-19
Vaccine Roadmap

Data as at:
23 Jun 2022



*Residential state may differ from the state in which a vaccine was administered

Commonwealth and Jurisdiction vaccine doses administered

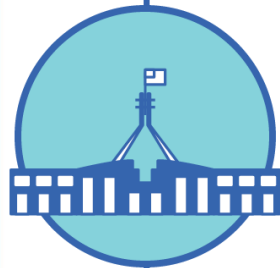
Data as at:
23 Jun 2022



60,112,660 total vaccine
doses administered nationally as at 23 June
+ 45,251 recorded in the last 24 hours



21,285,041
doses administered by state
and territory facilities
+ 4,768
recorded in the last 24 hours



38,827,619
doses administered by
commonwealth facilities
+ 40,483
recorded in the last 24 hours

37,512,673 total vaccine doses
administered in primary care settings
1,314,946 total vaccine doses
administered in aged care and disability
settings

NSW	Jurisdictions	Commonwealth
Cumulative	5,140,413	13,508,326
Daily increase	1,233	14,144

VIC	Jurisdictions	Commonwealth
Cumulative	6,128,819	9,643,001
Daily increase	1,033	9,838

QLD	Jurisdictions	Commonwealth
Cumulative	3,860,927	7,505,314
Daily increase	426	7,968

WA	Jurisdictions	Commonwealth
Cumulative	2,530,284	4,081,145
Daily increase	609	3,647

TAS	Jurisdictions	Commonwealth
Cumulative	628,098	735,414
Daily increase	117	981

SA	Jurisdictions	Commonwealth
Cumulative	1,843,431	2,337,977
Daily increase	779	2,987

ACT	Jurisdictions	Commonwealth
Cumulative	805,980	769,001
Daily increase	521	743

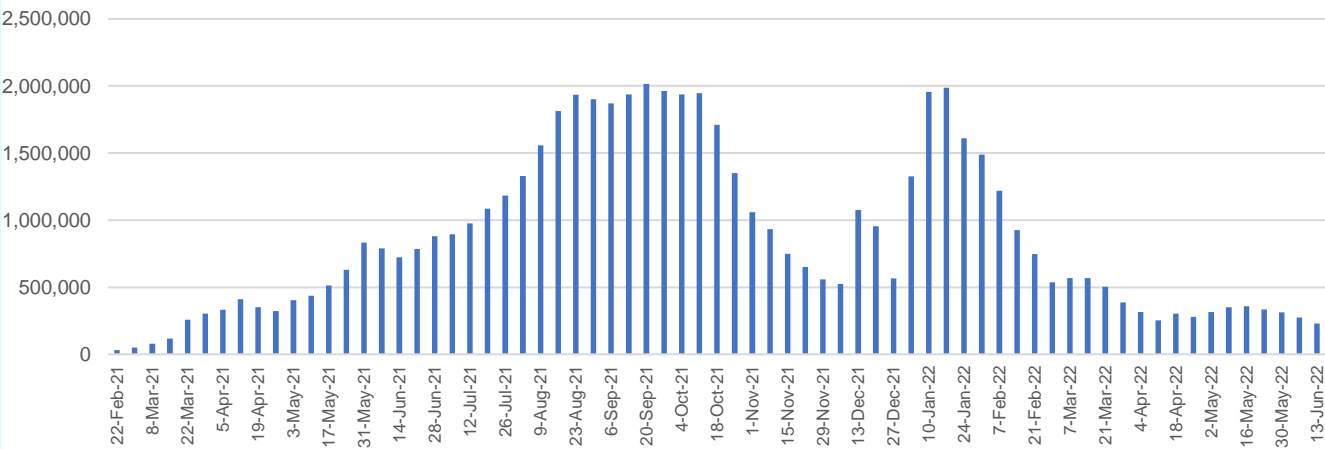
NT	Jurisdictions	Commonwealth
Cumulative	347,089	247,441
Daily increase	50	175

Vaccine milestone charts

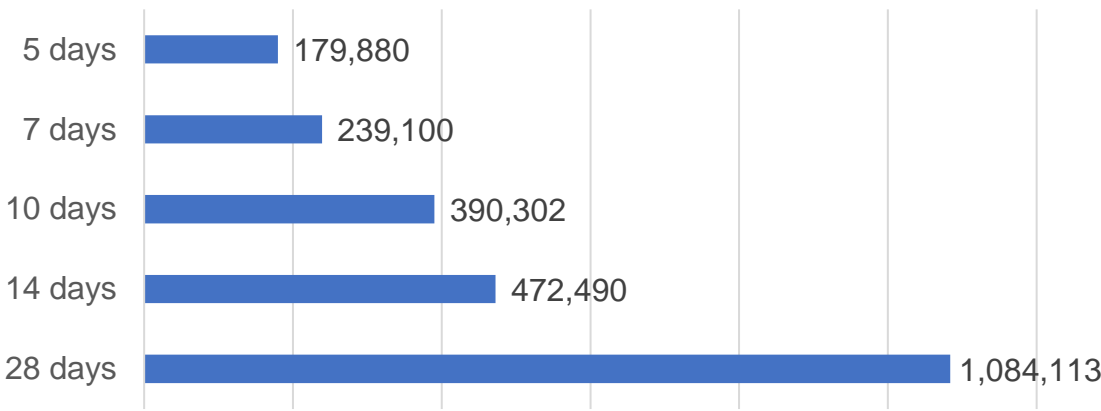
Data as at:
23 Jun 2022

Australia's COVID-19
Vaccine Roadmap

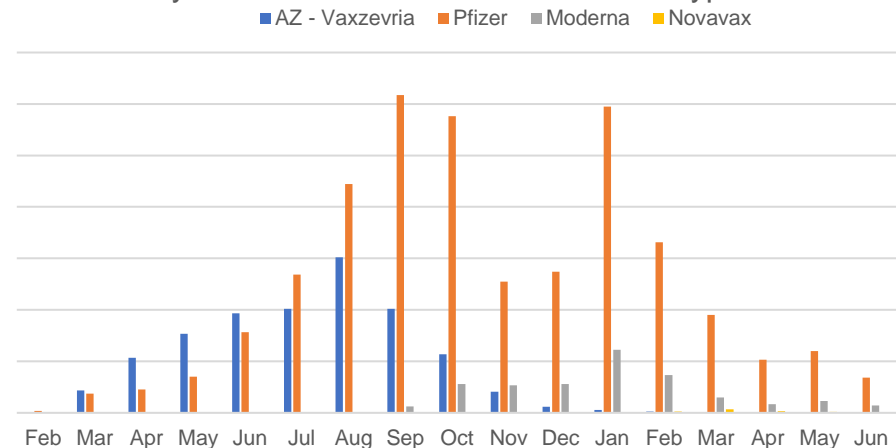
Doses Administered by Week



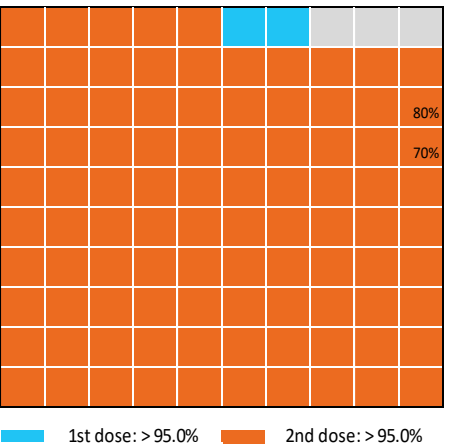
Doses Reported



Doses by administration month and vaccine type



Eligible population percentage coverage



*Each square represents 1% of the national population.
Squares are filled as milestones are achieved.

*Sourced from the Australian Immunisation Register.

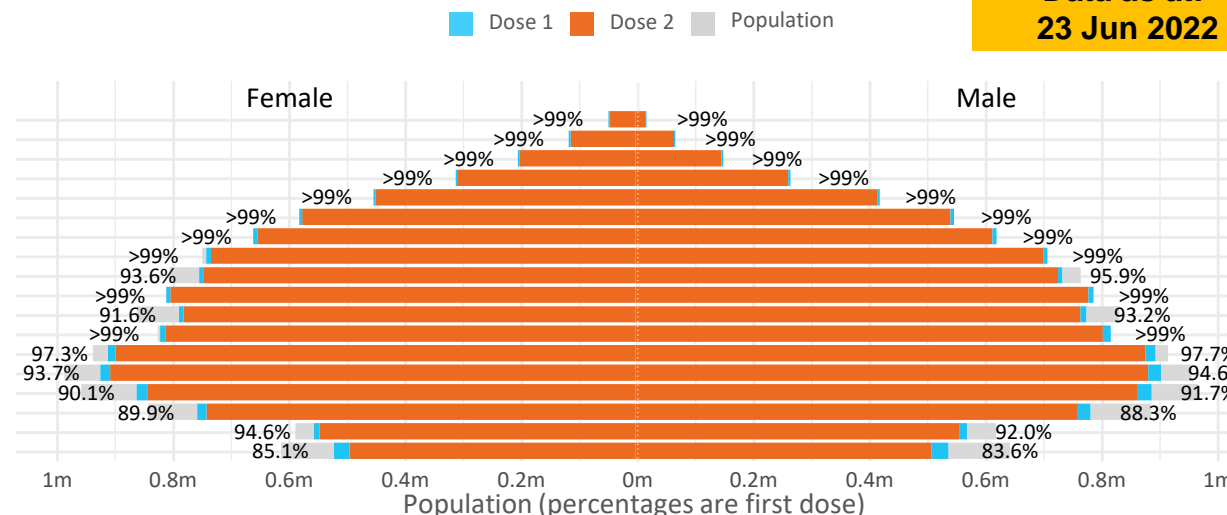
Data as at:
23 Jun 2022

Doses by age and sex

First and second doses by age and sex

	16+	50+	12-15	5-11
Dose 1	97.49% (20,103,114 doses / 20,619,959 people)	>99% (8,922,429 doses / 8,749,703 people)	84.38% (1,049,692 doses / 1,243,990 people)	52.36% (1,192,124 doses / 2,276,638 people)
Dose 2	95.86% (19,767,070 doses / 20,619,959 people)	>99% (8,814,952 doses / 8,749,703 people)	79.86% (993,460 doses / 1,243,990 people)	39.40% (897,070 doses / 2,276,638 people)

Age	Dose 1	Dose 2
95+	65,436 (>99%)	61,990 (>99%)
90-94	181,851 (>99%)	176,361 (>99%)
85-89	350,889 (>99%)	344,117 (>99%)
80-84	571,564 (>99%)	564,428 (>99%)
75-79	864,810 (>99%)	856,363 (>99%)
70-74	1,118,947 (>99%)	1,107,621 (>99%)
65-69	1,270,575 (>99%)	1,255,807 (>99%)
60-64	1,438,052 (>99%)	1,421,631 (99.0%)
55-59	1,475,656 (94.9%)	1,458,948 (93.8%)
50-54	1,584,649 (>99%)	1,567,686 (>99%)
45-49	1,550,845 (92.5%)	1,532,464 (91.4%)
40-44	1,625,413 (>99%)	1,601,401 (98.8%)
35-39	1,793,619 (97.7%)	1,761,410 (96.0%)
30-34	1,819,406 (94.6%)	1,777,414 (92.4%)
25-29	1,743,650 (91.5%)	1,695,874 (89.0%)
20-24	1,531,702 (89.5%)	1,491,501 (87.1%)
16-19	1,116,050 (93.3%)	1,092,054 (91.3%)
12-15	1,049,692 (84.4%)	993,460 (79.9%)

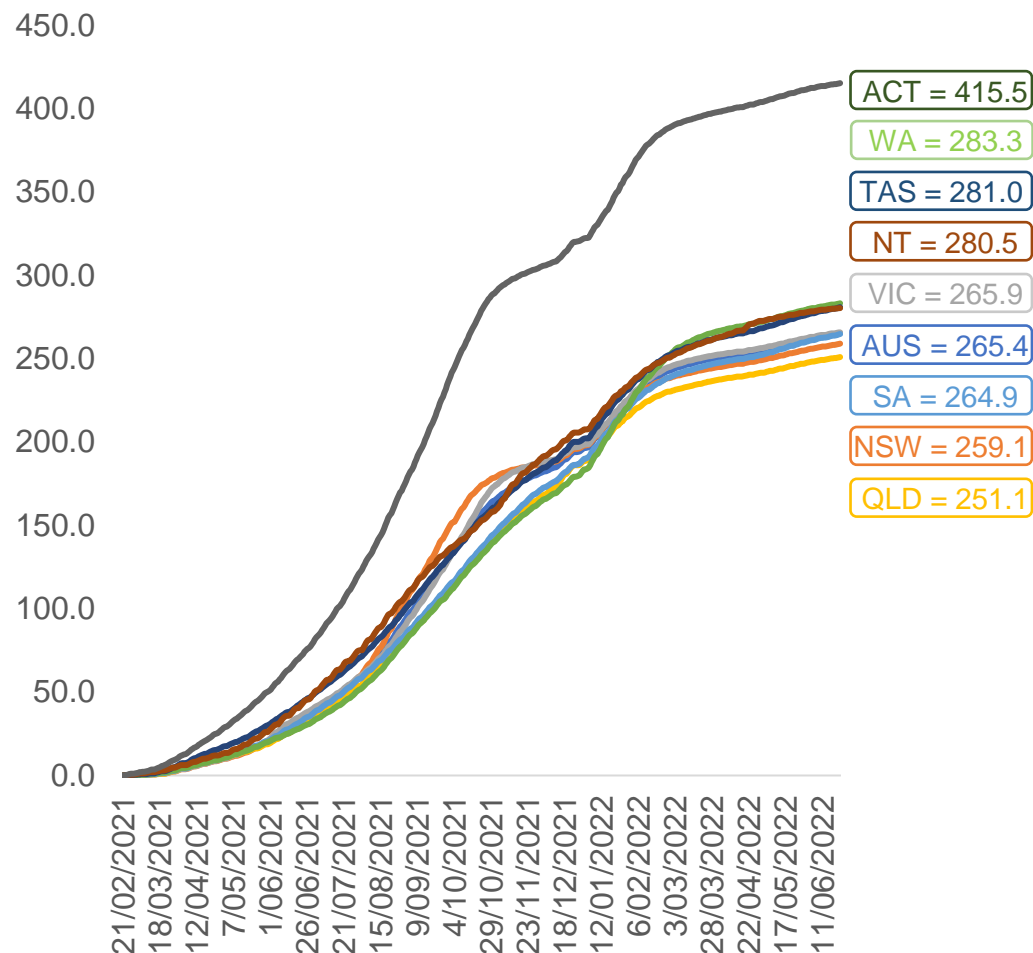


	AUS	ACT	NSW	NT	QLD	SA	TAS	VIC	WA
16 and over - dose 1	20,103,114	353,322	6,340,360	173,930	3,871,727	1,378,437	445,898	5,173,035	2,099,584
16 and over - dose 2	19,767,070	347,612	6,242,419	169,258	3,808,027	1,349,159	436,898	5,094,701	2,068,508
16 and over - population	20,619,959*	344,037	6,565,651	190,571	4,112,707	1,440,400	440,172	5,407,574	2,114,978
16 and over % with dose 1	97.49%	>99%	96.57%	91.27%	94.14%	95.70%	>99%	95.66%	>99%
16 and over % with dose 2	95.86%	>99%	95.08%	88.82%	92.59%	93.67%	>99%	94.21%	97.80%
5 to 11 - dose 1	1,192,124	31,781	356,071	13,146	206,388	83,712	28,456	324,556	140,344
5 to 11 - dose 2	897,070	27,265	274,191	8,769	149,286	63,130	23,046	244,940	101,820
5 to 11 - population	2,276,638	39,789	716,460	24,750	478,731	148,816	45,033	578,499	244,154
5 to 11 % with dose 1	52.36%	79.87%	49.70%	53.12%	43.11%	56.25%	63.19%	56.10%	57.48%
5 to 11 % with dose 2	39.40%	68.52%	38.27%	35.43%	31.18%	42.42%	51.18%	42.34%	41.70%
12 to 15 - dose 1	1,049,692	20,122	322,694	10,757	205,715	68,221	22,867	274,329	115,526
12 to 15 - dose 2	993,460	19,567	308,258	9,704	192,126	64,452	21,751	262,456	106,922
12 to 15 - population	1,243,990	19,693	390,330	13,060	270,146	82,747	26,308	308,611	132,869
12 to 15 % with dose 1	84.38%	>99%	82.67%	82.37%	76.15%	82.45%	86.92%	88.89%	86.95%
12 to 15 % with dose 2	79.86%	>99%	78.97%	74.30%	71.12%	77.89%	82.68%	85.04%	80.47%

*National population will not equal sum of listed jurisdictions due to a small number of people counted in national population residing in some 'other' territories. Sum of state doses will not add to national total as some records are unable to be geocoded to a State or Territory.
Doses sourced from Australian Immunisation Register, population from ABS ERP June 2020

Vaccinations by location

Cumulative total doses administered vs eligible state populations*

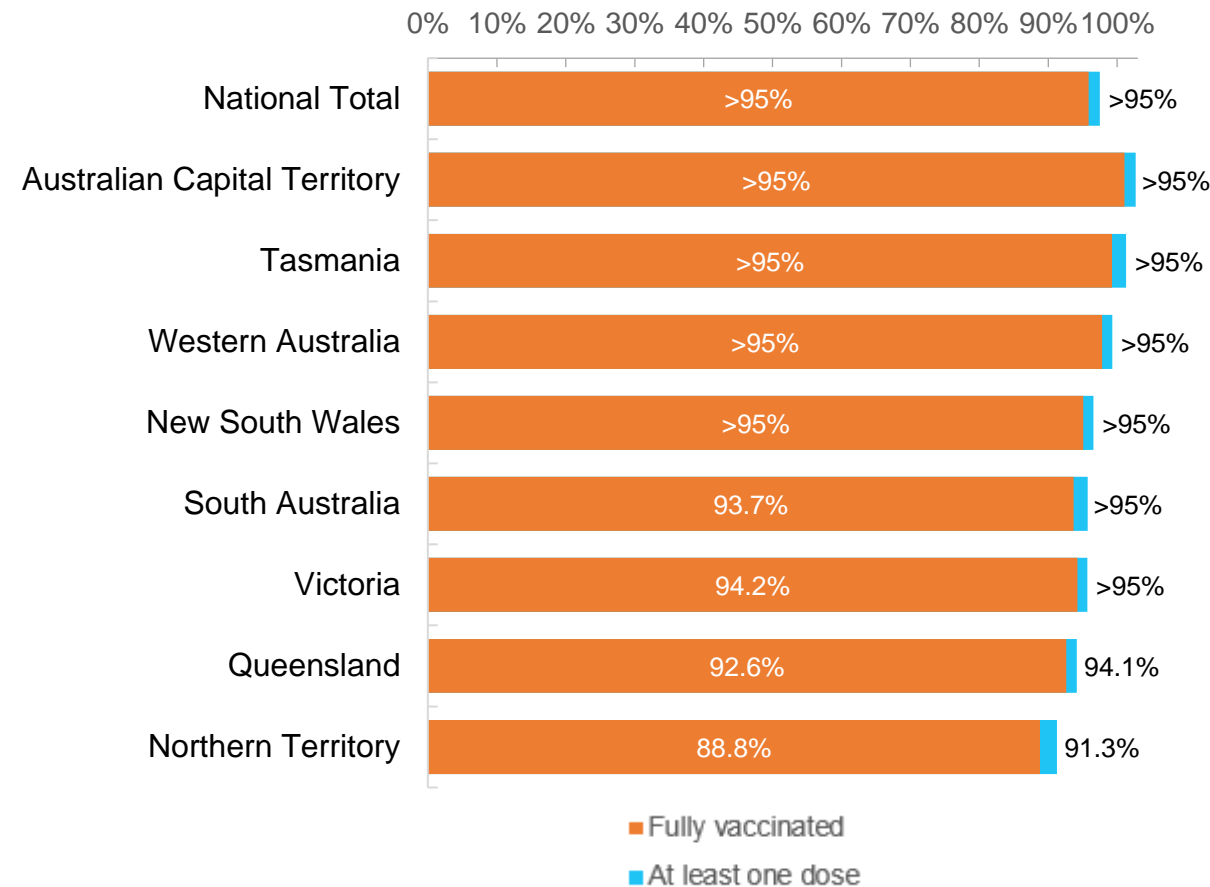


*Not an indication of percentage vaccinated, numbers will exceed 100 due to multiple doses required per person of the population. All doses are included for those aged 12 and above, and are based on vaccination provider location.

Data as at:
23 Jun 2022

Australia's COVID-19
Vaccine Roadmap

First and Second Doses by residential location



Aboriginal and Torres Strait Islander peoples

Number of people vaccinated

Data as at:
21 Jun 2022
Updated weekly

Australia's COVID-19
Vaccine Roadmap



443,167

people over the age of 16
have had at least one dose

85.0%

of people over the age of 16
have had at least one dose



424,803

people over the age of 16
are fully vaccinated

81.5%

of people over the age of 16 are
fully vaccinated



People aged 12 – 15 years

47,996

42,134

67.9%

59.6%

At least one dose

Fully vaccinated

178 Aboriginal community controlled health services (ACCHS)

0#

50

27

44

12

3

21

21

ACT

NSW

NT

QLD

SA

TAS

VIC

WA

Medicare Address State ^{##}	Individuals Dose 1	Individuals Dose 1 %	Individuals Dose 2	Individuals Dose 2 %
Australian Capital Territory	4,794	91.8%	4,674	89.5%
New South Wales	135,960	87.3%	132,912	85.4%
Northern Territory	41,475	89.7%	39,500	85.4%
Queensland	116,474	81.8%	111,127	78.1%
South Australia	20,061	80.5%	18,679	75.0%
Tasmania	13,895	88.8%	13,496	86.3%
Victoria	35,660	90.4%	34,885	88.4%
Western Australia	53,563	86.8%	49,891	80.8%
Unknown/Other Territories	21,285	70.3%	19,639	64.9%
Totals	443,167	85.0%	424,803	81.5%

Source: Australian Immunisation Register

*Identifying as Aboriginal and Torres Strait Islander is optional and the estimated population may be under reported.

**Includes all Aboriginal and Torres Strait Islander peoples who have received a vaccination, not limited to those administered in an ACCHS setting

#ACCHS in the ACT are currently operating as a Commonwealth Vaccine Clinics so not included to avoid double counting

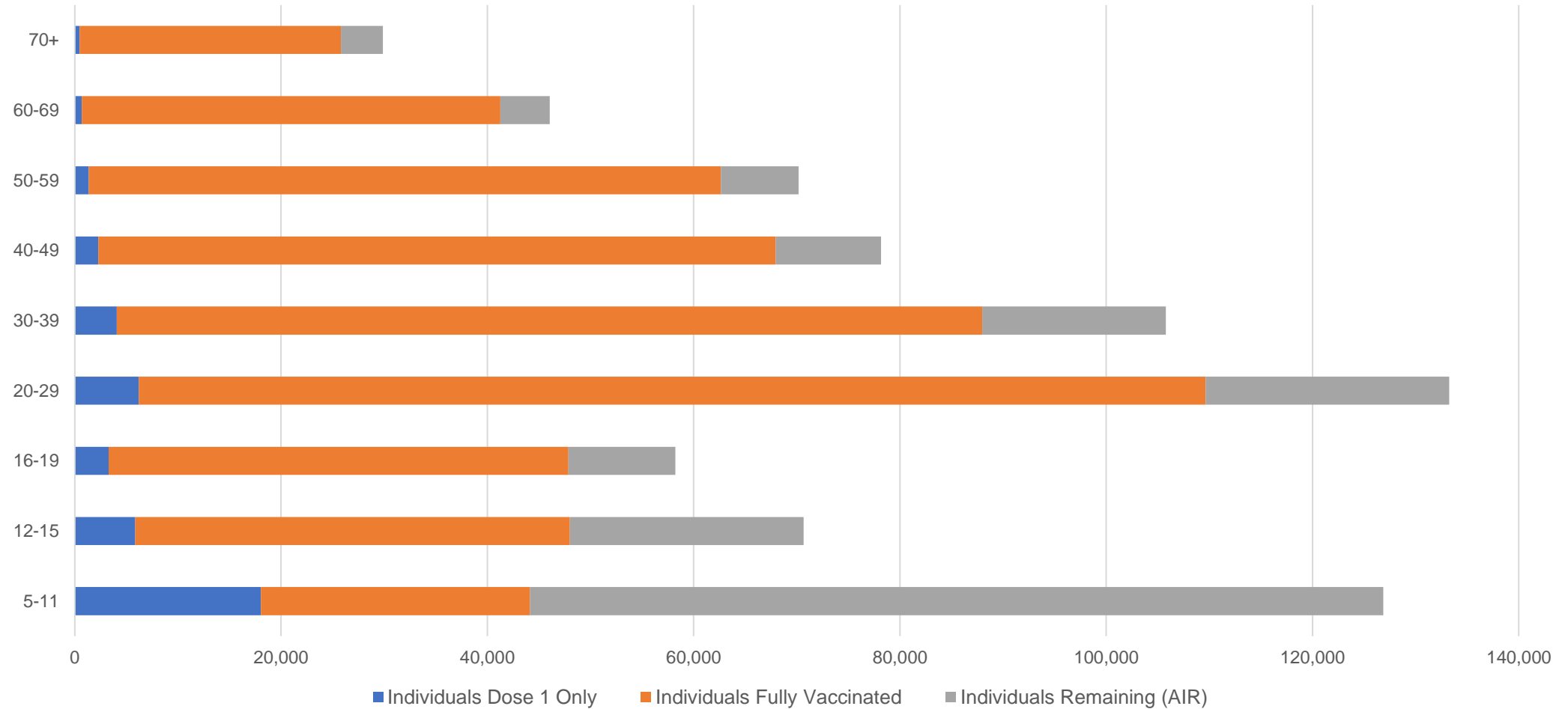
##The above table includes all identified Aboriginal and Torres Strait Islander people who are aged 16 and above by their state of residence.

Aboriginal and Torres Strait Islander peoples

Number of people vaccinated by age

Data as at:
21 Jun 2022
Updated weekly

Australia's COVID-19
Vaccine Roadmap



Source: Australian Immunisation Register

Commonwealth primary care

Data as at:
23 Jun 2022

Australia's COVID-19
Vaccine Roadmap



Primary care vaccine administration sites

5,709	128	178	3,614
GPs	CVCs	ACCHS	Pharmacies



37,512,673 total vaccine doses administered
primary care settings as at 23 June
+ 40,044 recorded in the last 24 hours

Primary care vaccinations by provider type

	Doses administered	Daily increase	7 day increase
General Practice* includes other Commonwealth	29,992,237	27,662	147,130
Pharmacy	7,520,436	12,382	64,604

NSW
12,936,597
(+13,751 daily increase)

VIC
9,310,842
(+9,399 daily increase)

QLD
7,220,776
(+8,101 daily increase)

WA
3,940,544
(+3,477 daily increase)

TAS
714,324
(+997 daily increase)

SA
2,256,243
(+3,103 daily increase)

ACT
592,958
(+693 daily increase)

NT
221,721
(+111 daily increase)

318,668

doses administered to persons
residing in other territories or with
missing residential information

*General practice includes Commonwealth Vaccination Clinics, Aboriginal Community Health Centres, Royal Flying Doctor Service and other Commonwealth vaccination facilities

Source: Australian Immunisation Register

Data as at:
23 Jun 2022

Commonwealth aged care and disability doses administered



1,314,946 (+ 439 last 24 hours)

Total vaccine doses administered in aged care and disability facilities as at 23 June

Number of doses administered as part of the Commonwealth aged and disability care rollout

NSW
571,812
(+126 daily increase)

VIC
247,279
(+88 daily increase)

QLD
209,137
(+91 daily increase)

WA
111,973
(+46 daily increase)

TAS
23,646
(<10 daily increase)

SA
86,309
(<10 daily increase)

ACT
17,903
(<10 daily increase)

NT
7,710
(<10 daily increase)

39,177

doses administered to persons
residing in other territories or with
missing residential information

*Sourced from the Australian Immunisation Register. Includes all persons vaccinated at participating residential aged care, disability and related industry settings.

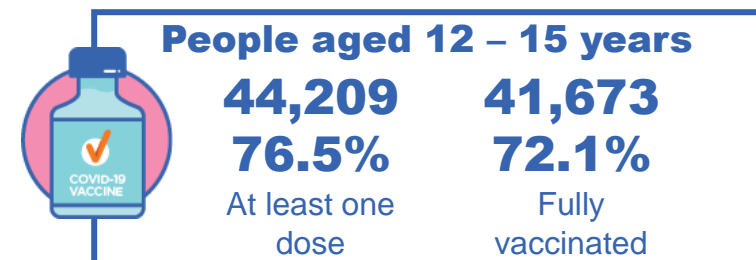
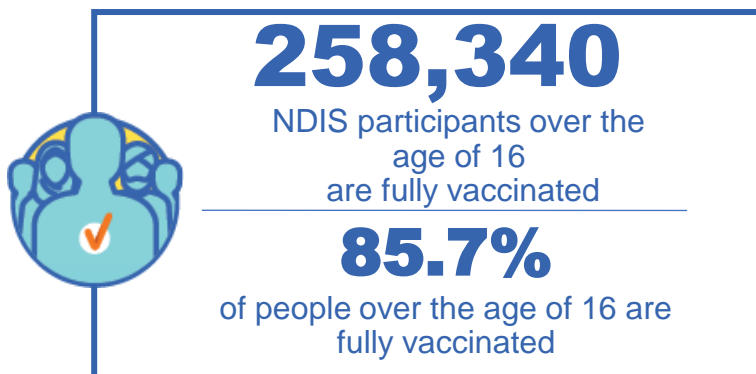
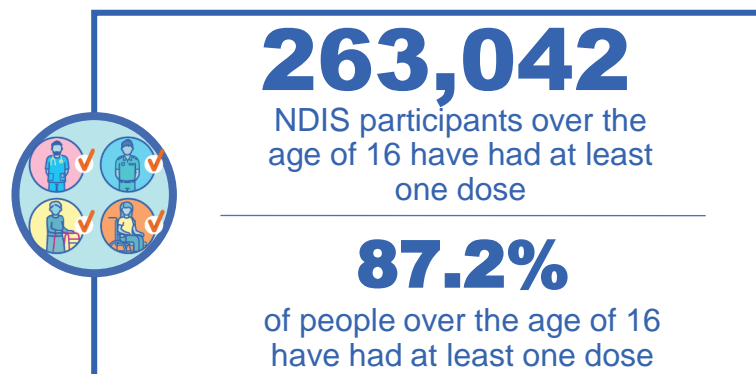
**State level breakdown indicates the residential location and may not align to the state in which the vaccination occurred.

Source: Australian Immunisation Register

National Disability Insurance Scheme (NDIS) reported vaccinations

Data as at:
23 June 2022
Updated weekly

Australia's COVID-19
Vaccine Roadmap



NDIS participant vaccinations

	People aged 16+ with at least one dose	People aged 16+ fully vaccinated	% People aged 16+ with at least one dose	% People aged 16+ fully vaccinated
ACT	4,947	4,883	89.2%	88.0%
NSW	80,502	79,224	87.7%	86.3%
NT	2,294	2,224	78.6%	76.2%
QLD	52,167	51,187	85.6%	84.0%
SA	21,558	21,056	85.1%	83.1%
TAS	6,573	6,421	87.5%	85.4%
VIC	69,861	68,712	88.4%	86.9%
WA	25,140	24,633	88.6%	86.8%
National	263,042	258,340	87.2%	85.7%

Source: Linkage between National Disability Insurance Agency data and the Australian Immunisation Register. Total NDIS participant numbers as at 30 May. Australian Immunisation Register data as at 22 June. Includes all participants regardless of residence type.

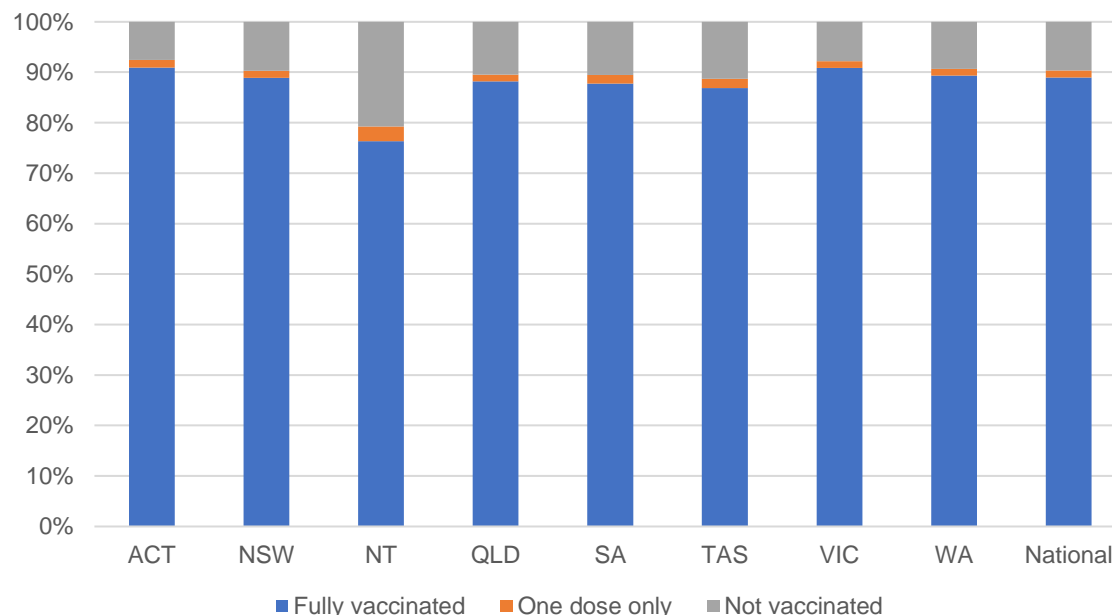
National Disability Insurance Scheme (NDIS) reported vaccinations

Data as at:
23 June 2022
Updated weekly

Australia's COVID-19
Vaccine Roadmap

NATIONAL	Total people with at least one dose	People fully vaccinated	Total number of individuals in cohort	% People with at least one dose	% People fully vaccinated
NDIS participants living in disability accommodation	21,281	20,951	23,469	90.7%	89.3%

NDIS participants in disability and aged care accommodation



Source: Linkage between National Disability Insurance Agency data and the Australian Immunisation Register. Includes participants residing in disability accommodation only.

Source: Total NDIS participant numbers as at 30 May. Participant data as at 22 June. Australian Immunisation Register data as at 22 June. Worker data as at 22 June.

NDIS workforce vaccinations

	NDIS workers with at least one dose	NDIS workers fully vaccinated	% NDIS workers with at least one dose	% NDIS workers fully vaccinated
NSW	127,095	121,926	98.2%	94.2%
VIC	117,929	114,833	98.4%	95.8%
QLD	71,391	70,541	97.9%	96.7%
WA	34,499	33,049	98.9%	94.7%
SA	35,917	34,032	98.6%	93.4%
TAS	10,865	10,650	99.5%	97.5%
ACT	12,333	12,306	99.8%	99.6%
NT	3,968	3,808	99.6%	95.6%
TOTAL	413,997	401,145	98.4%	95.3%

Source: the NDIS Commission has established a requirement for registered NDIS providers who provide intensive disability support services to report on the vaccination status of workers they employ, or otherwise engage, to deliver NDIS-funded supports and services, and who are required to be vaccinated in accordance with in-force state and territory public health orders. The statistics reflect data reported to the NDIS Commission by registered NDIS providers and should be considered indicative and subject to change

Note: Some registered NDIS providers are yet to report on the vaccination status of their workforce. The NDIS Commission is working with those providers around reporting requirements.

Remaining workers not included include those exempt from vaccination requirements, workers whose vaccination status is not yet verified by the provider (such as workers on leave) and provider reporting anomalies.

Residential aged care vaccination rollout

Residential aged care facilities status

176,468

People fully vaccinated

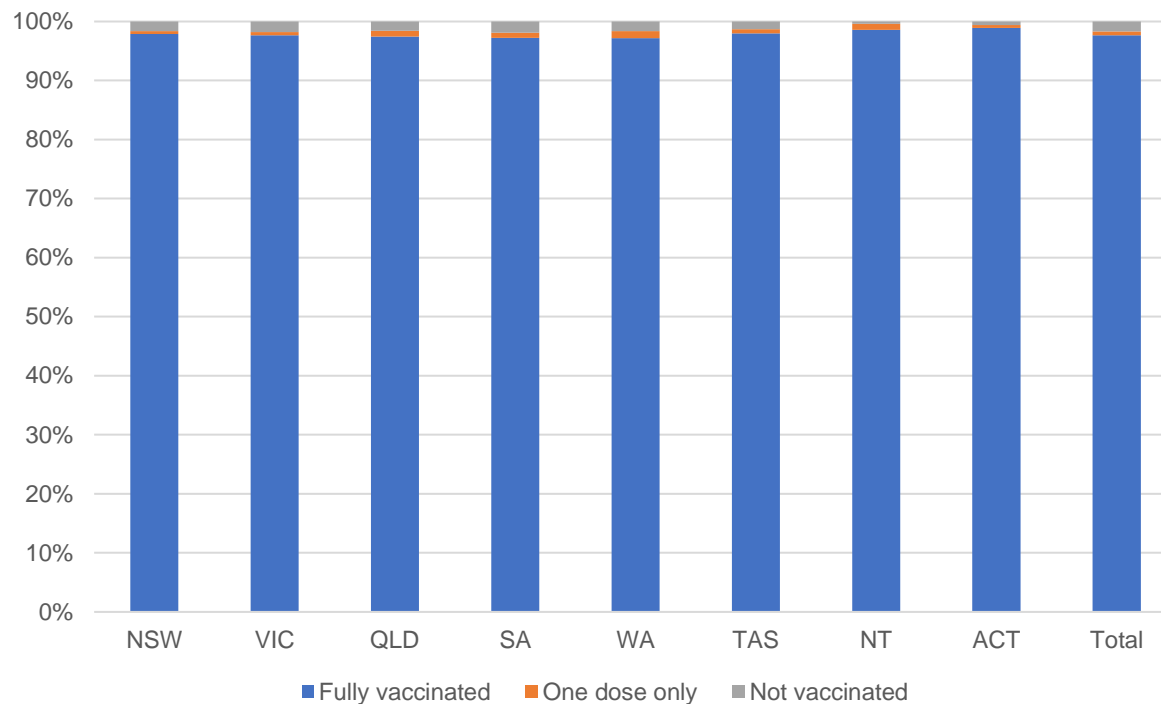
177,715

People with at least one dose

Australia's COVID-19 Vaccine Roadmap

Data as at:
23 June 2022
Updated weekly

Aged care resident vaccinations



Aged care worker vaccinations

Jurisdictions	Total workers with at least one dose	Workers fully vaccinated	% Workers with at least one dose	% Workers fully vaccinated
NSW	77,595	77,467	99.9%	99.7%
VIC	70,793	70,792	99.5%	99.5%
QLD	48,401	48,399	99.7%	99.7%
SA	27,006	26,998	100.0%	100.0%
WA	24,599	24,595	100.0%	100.0%
TAS	7,544	7,544	100.0%	100.0%
NT	934	934	100.0%	100.0%
ACT	2,921	2,921	100.0%	100.0%
Total	259,793	259,650	99.8%	99.7%

Source: Residential aged care provider self-reported COVID-19 vaccination information

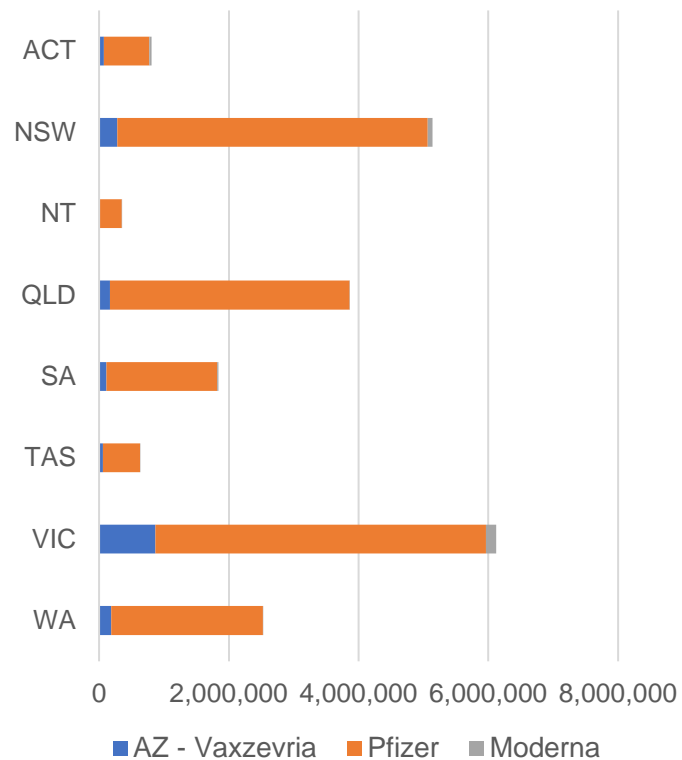
*Status updates are provided by facilities at least once per week. Reporting is updated Monday to Friday to encompass different facility updates being made on different days.

Data is sourced directly from Aged Care Service Providers and is not drawn or closely aligned with data from AIR due to inconsistencies and potential lags in uploading of records.

Data as at:
23 Jun 2022

Jurisdiction administered

Total vaccine doses administered in State and Territory clinics as at 23 June



21,285,041 total vaccine doses administered
in State and Territory clinics as at 23 June
+ **4,768** recorded in the last 24 hours
+ **23,868** recorded in the last 7 days

NSW
5,140,413
(+1,233 daily
increase)

VIC
6,128,819
(+1,033 daily
increase)

QLD
3,860,927
(+426 daily
increase)

WA
2,530,284
(+609 daily
increase)

TAS
628,098
(+117 daily
increase)

SA
1,843,431
(+779 daily
increase)

ACT
805,980
(+521 daily
increase)

NT
347,089
(+50 daily
increase)

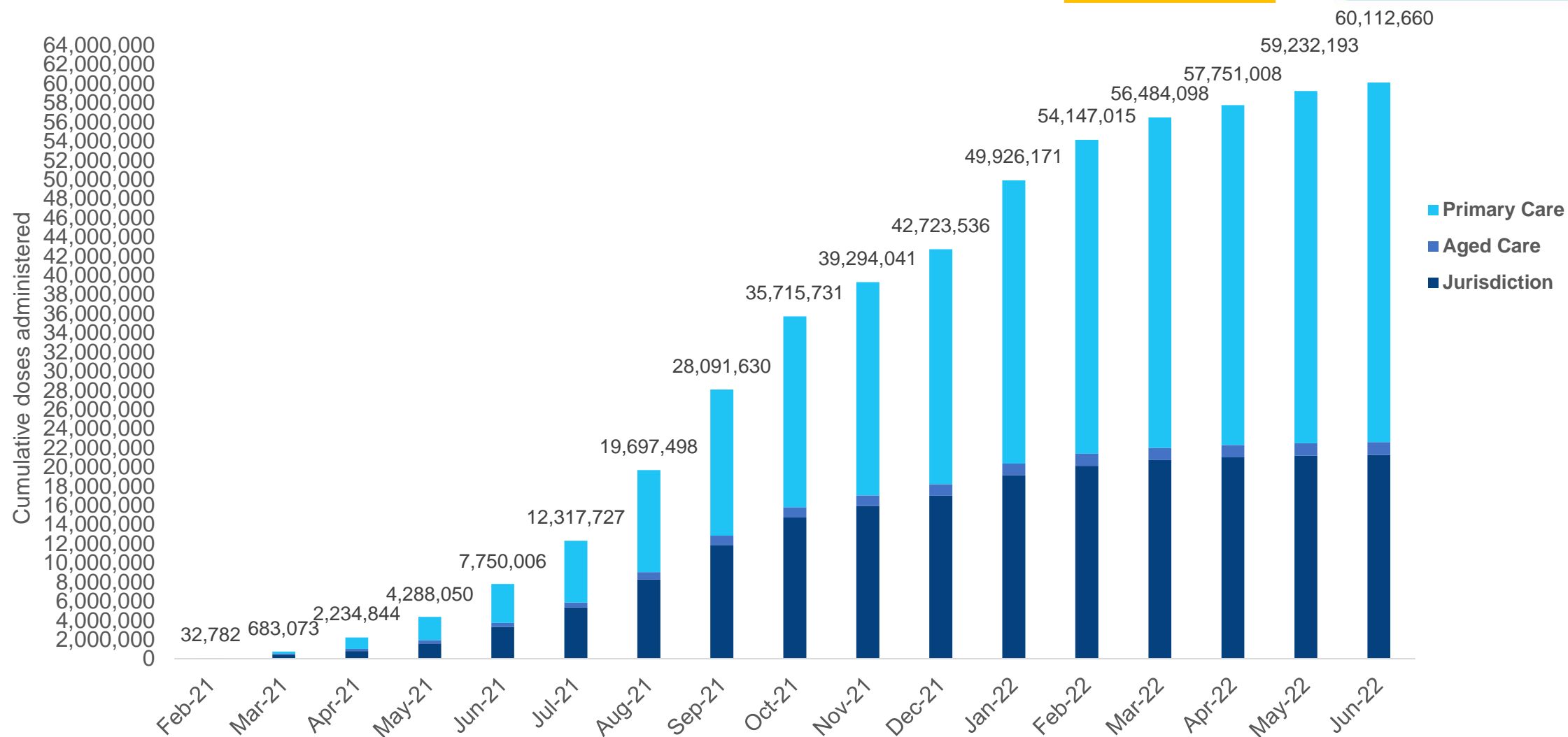
*Sourced from the Australian Immunisation Register. Numbers are calculated as difference in daily cumulative reported numbers to allow for historical corrections.

Source: Australian Immunisation Register

Cumulative doses administered by channel

Data as at:
23 Jun 2022

Australia's COVID-19
Vaccine Roadmap

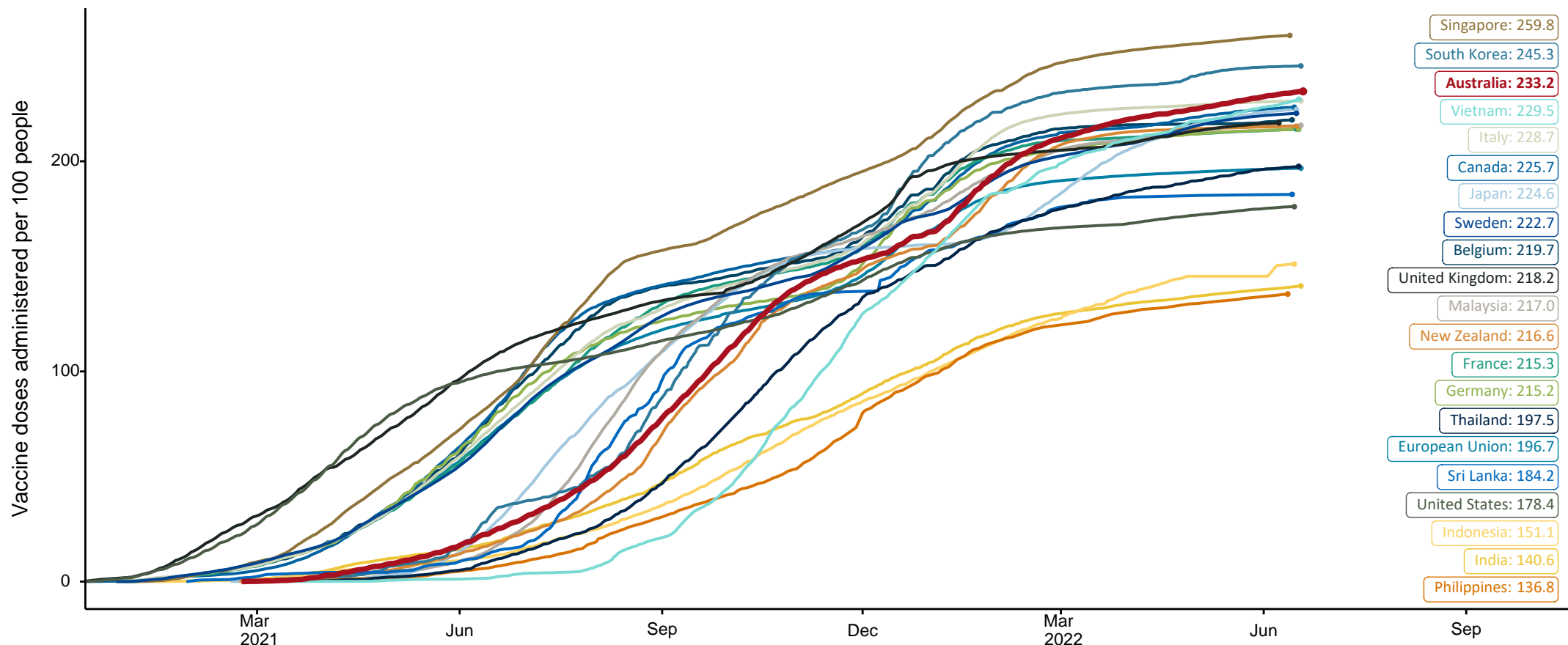


Source: Australian Immunisation Register

COVID-19 vaccine doses per 100, Australia and select countries

Data as at:
19 June 2022
Updated weekly

Australia's COVID-19
Vaccine Roadmap



Note: From 11 January 2022, data for Australia includes all doses administered to people 5 and over. Prior to 11 January, data was for 12 and over.

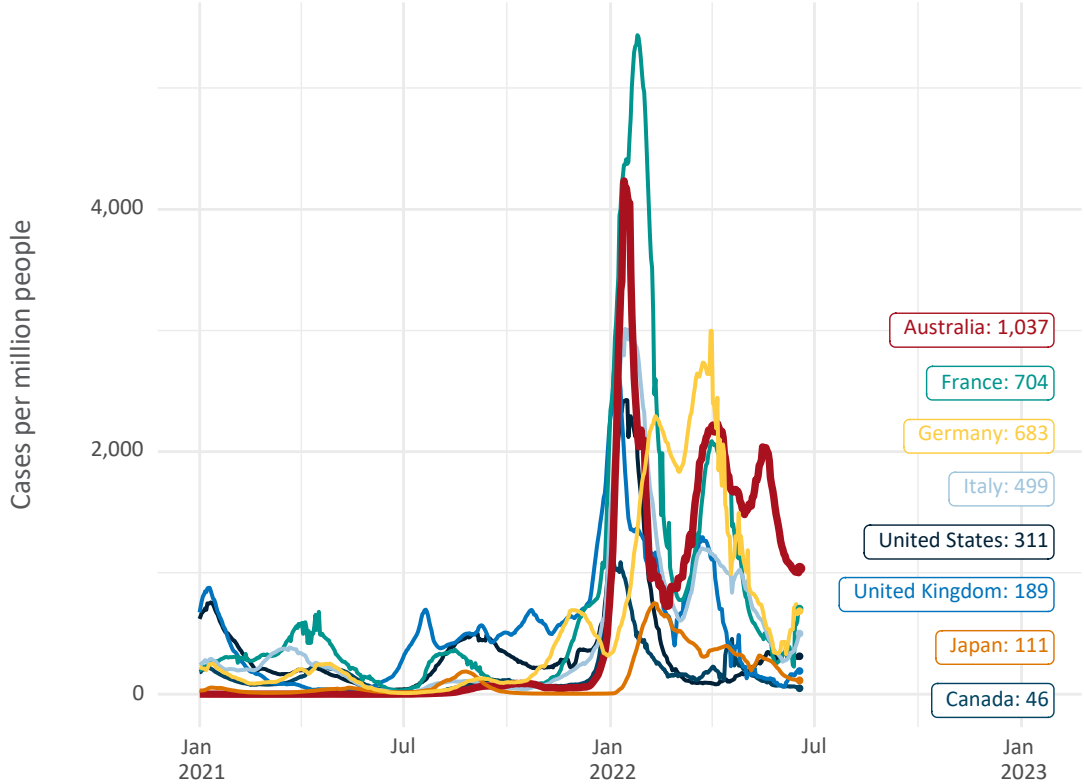
Source: Department of Health (Australia), Our World in Data (international)

Latest data: 19 June

International data – COVID-19

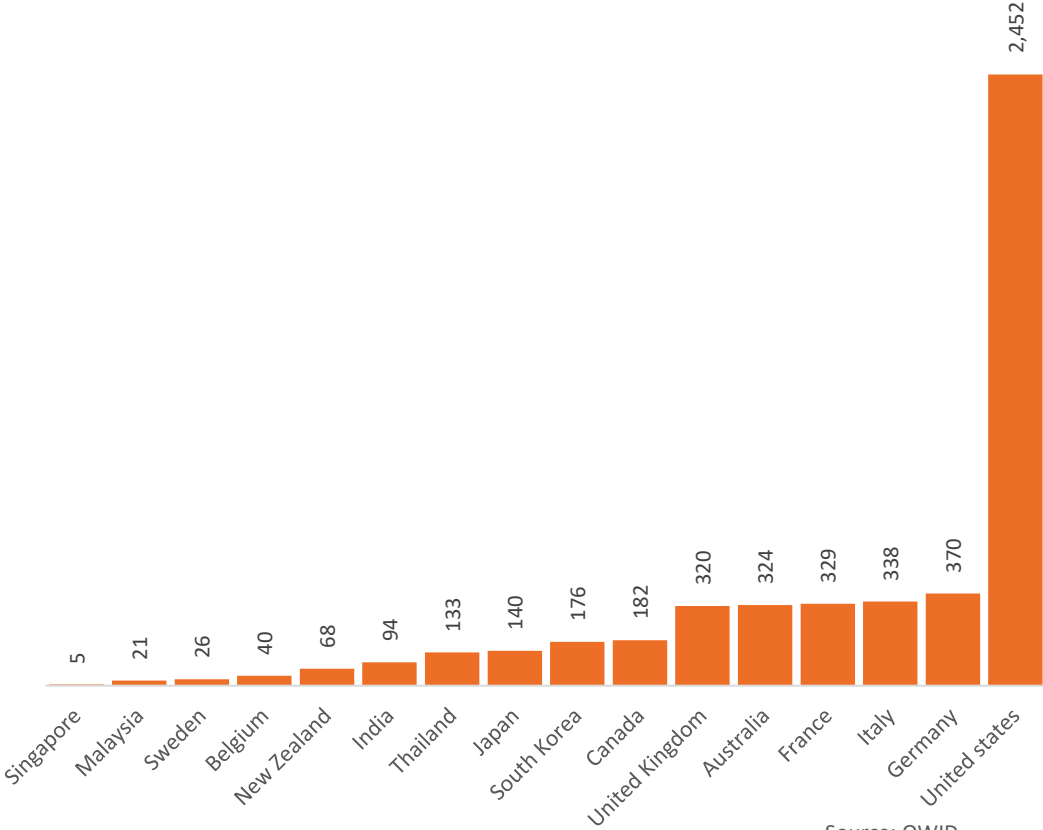
Data as at:
19 June 2022
Updated weekly

New daily cases per million since 2021, Australia and G7 countries
Smoothed - 7 day average



Source: OWID
Data downloaded: 20 Jun 2022 09:21
Latest data: 18 Jun 2022

COVID-19 deaths in past 7 days - Australia and select countries



Source: OWID
Data downloaded: 20 Jun 2022 09:21
Latest data: 18 Jun 2022