



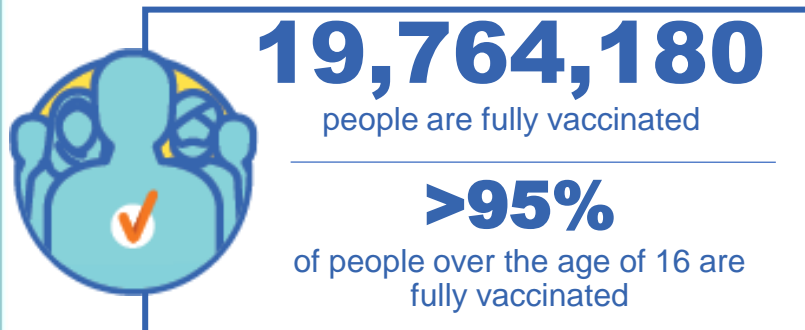
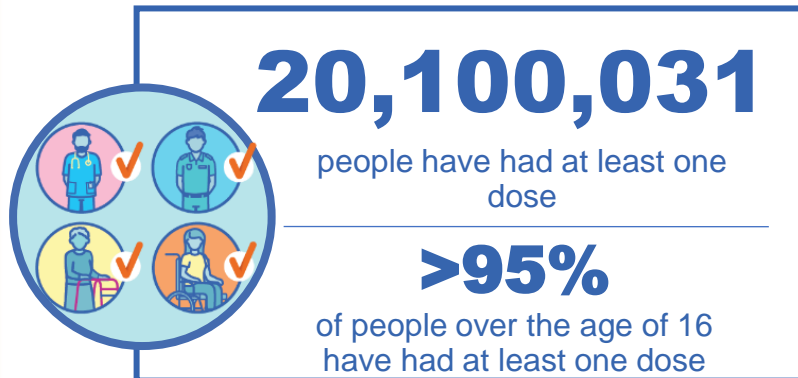
**Australian Government**  
**Operation COVID Shield**

# COVID-19 Vaccine Roll-out

22 June 2022

Data as at:  
21 Jun 2022

## Total vaccine doses



**60,024,367** total vaccine  
doses administered nationally as at 21 June

**+45,912** recorded in the last 24 hours

**NSW**  
**18,619,720**  
(+15,682 daily  
increase)

**VIC**  
**15,751,119**  
(+10,679 daily  
increase)

**QLD**  
**11,349,832**  
(+8,442 daily  
increase)

**WA**  
**6,602,720**  
(+4,304 daily  
increase)

**TAS**  
**1,361,095**  
(+1,358 daily  
increase)

**SA**  
**4,173,291**  
(+3,849 daily  
increase)

**ACT**  
**1,572,598**  
(+1,337 daily  
increase)

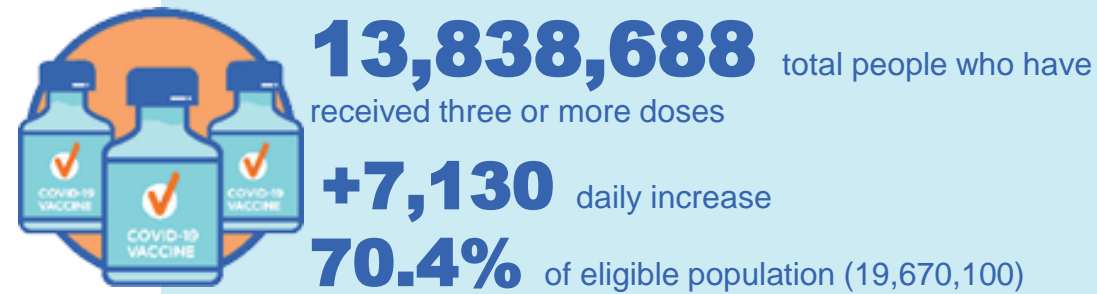
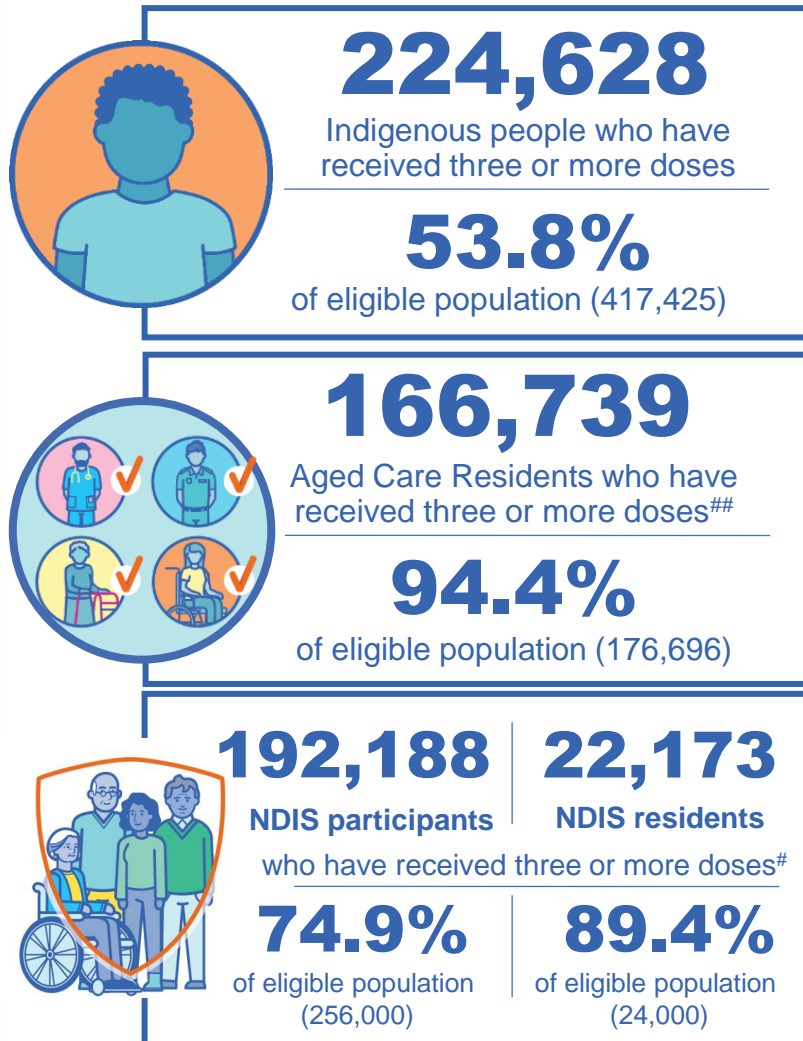
**NT**  
**593,992**  
(+261 daily  
increase)

\*Administration state breakdown indicates state in which a vaccine was administered

\*\*Overall dose count includes instances of more than three doses per person in a small number of cases.

Source: Australian Immunisation Register

## Booster Vaccinations



Data as at:  
21 Jun 2022

	Number of People	Daily Increase	% of Eligible
NSW	4,222,149	2,317	67.8%
VIC	3,691,249	1,654	72.7%
QLD	2,397,153	1,395	63.4%
WA	1,698,920	692	82.9%
SA	988,919	701	73.9%
TAS	316,446	193	72.8%
ACT	273,401	123	78.8%
NT	131,141	57	78.0%

\*People may belong to multiple groups and could be represented in the above breakdowns multiple times.  
# NDIS participants data as at 20 June 2022. ## Aged Care Residents data as at 21 June 2022.

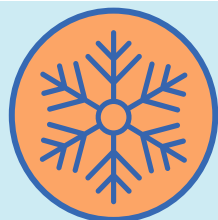
Source: Australian Immunisation Register

**119,310** doses administered to persons residing in other territories or with missing residential information

# Winter / Fourth Doses

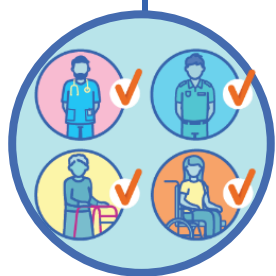
Data as at:  
21 Jun 2022

Australia's COVID-19  
Vaccine Roadmap



**2,153,121** total people (16+) who have received four or more doses

**+35,292** daily increase



**1,905,559**

People aged 65+ who have  
received four or more doses

**55.6%**

of eligible population (3,426,117)

	Number of People 16+	Daily Increase
ACT	42,136	536
NSW	696,033	12,284
NT	9,326	149
QLD	408,681	6,596
SA	174,013	2,942
TAS	60,119	998
VIC	539,307	8,211
WA	213,084	3,435

**10,422** doses administered to persons  
residing in other territories or with  
missing residential information

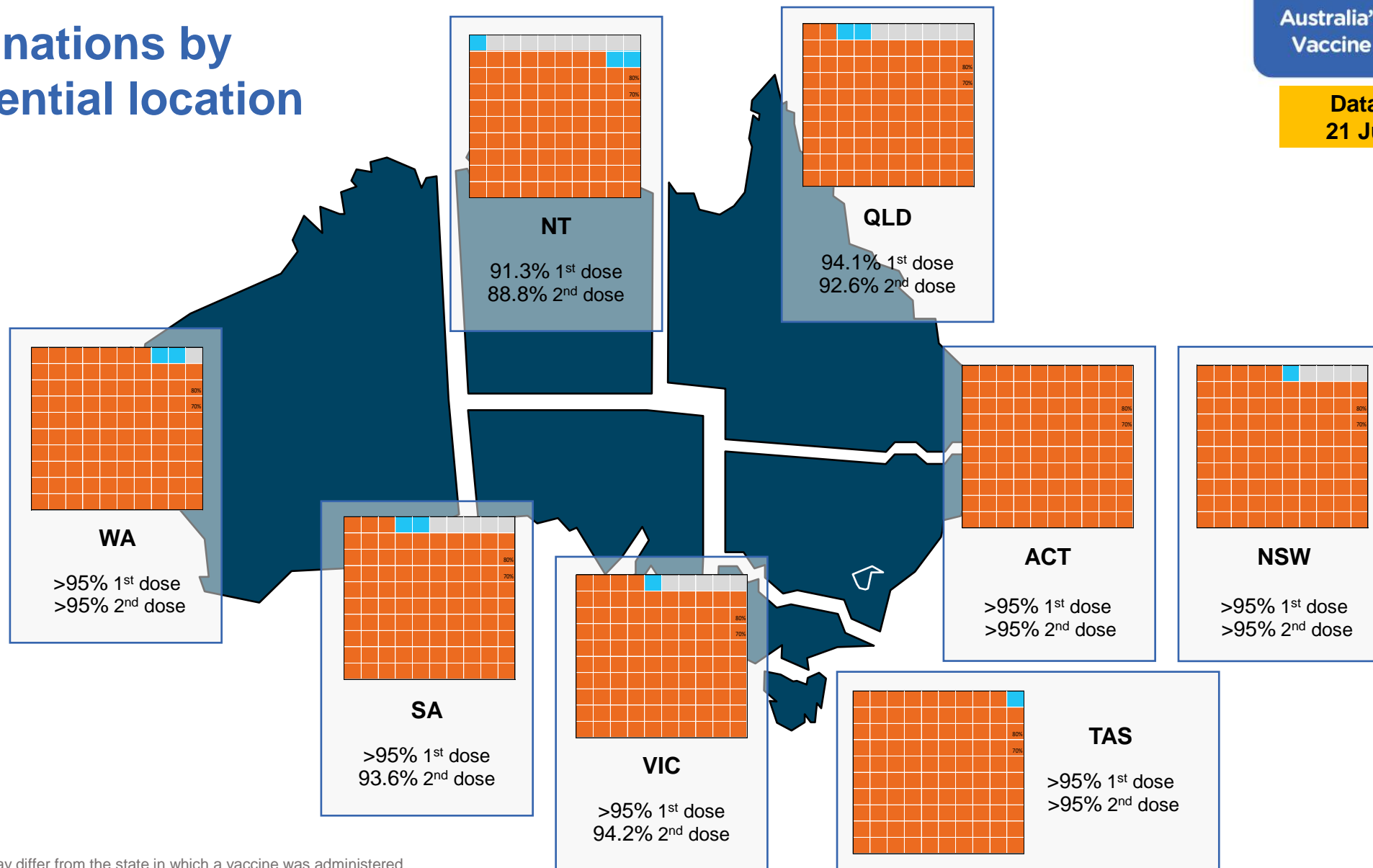
\*People become eligible for a winter booster four months after their third dose.

Source: Australian Immunisation Register

# Vaccinations by residential location

Australia's COVID-19  
Vaccine Roadmap

Data as at:  
21 Jun 2022



\*Residential state may differ from the state in which a vaccine was administered

# Commonwealth and Jurisdiction vaccine doses administered

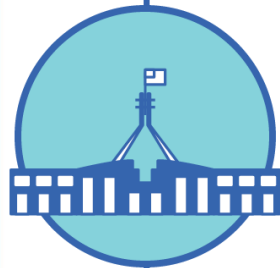
Data as at:  
21 Jun 2022



**60,024,367** total vaccine  
doses administered nationally as at 21 June  
**+ 45,912** recorded in the last 24 hours



**21,276,553**  
doses administered by state  
and territory facilities  
**+ 3,028**  
recorded in the last 24 hours



**38,747,814**  
doses administered by  
commonwealth facilities  
**+ 42,884**  
recorded in the last 24 hours

**37,433,826** total vaccine doses  
administered in primary care settings  
**1,313,988** total vaccine doses  
administered in aged care and disability  
settings

NSW	Jurisdictions	Commonwealth
Cumulative	5,138,959	13,480,761
Daily increase	206	15,476

VIC	Jurisdictions	Commonwealth
Cumulative	6,126,901	9,624,218
Daily increase	922	9,757

QLD	Jurisdictions	Commonwealth
Cumulative	3,860,149	7,489,683
Daily increase	215	8,227

WA	Jurisdictions	Commonwealth
Cumulative	2,529,114	4,073,606
Daily increase	474	3,830

TAS	Jurisdictions	Commonwealth
Cumulative	627,704	733,391
Daily increase	<10	1,359

SA	Jurisdictions	Commonwealth
Cumulative	1,841,736	2,331,555
Daily increase	657	3,192

ACT	Jurisdictions	Commonwealth
Cumulative	805,005	767,593
Daily increase	499	838

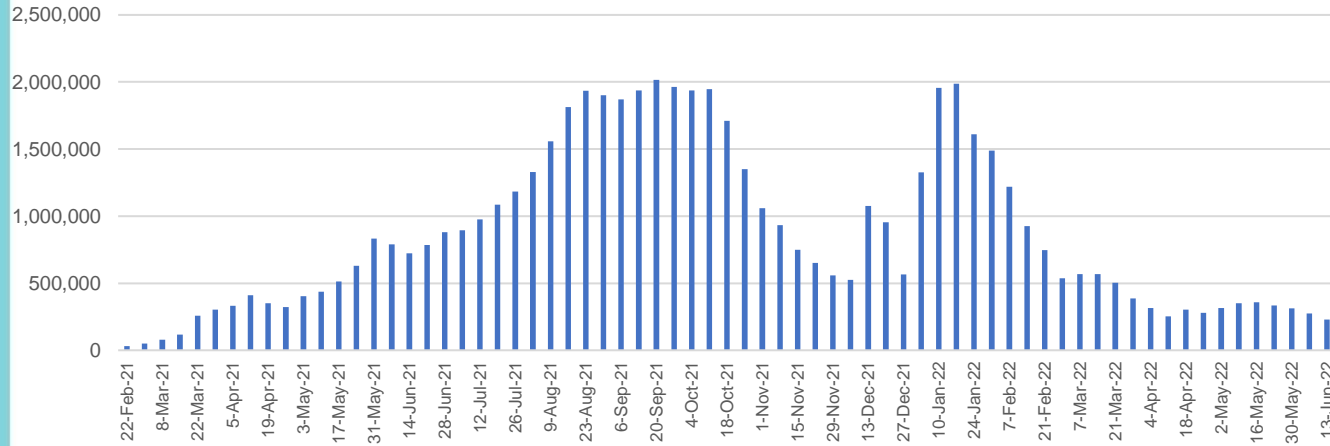
NT	Jurisdictions	Commonwealth
Cumulative	346,985	247,007
Daily increase	56	205

# Vaccine milestone charts

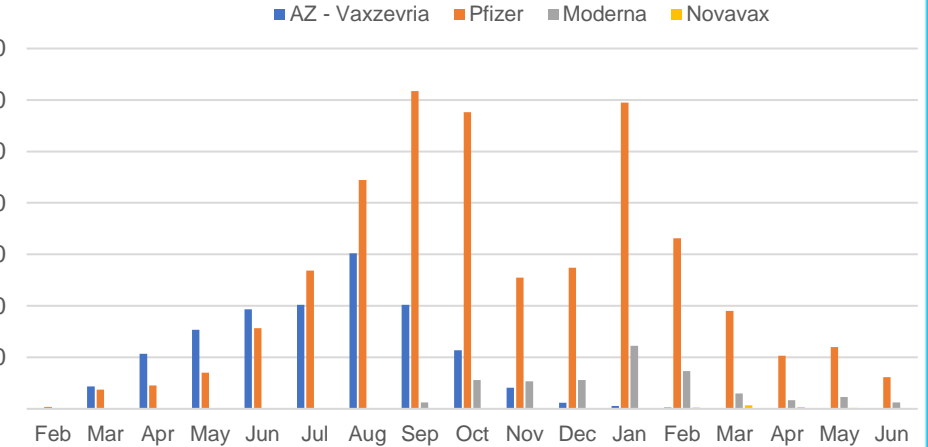
Data as at:  
21 Jun 2022

Australia's COVID-19  
Vaccine Roadmap

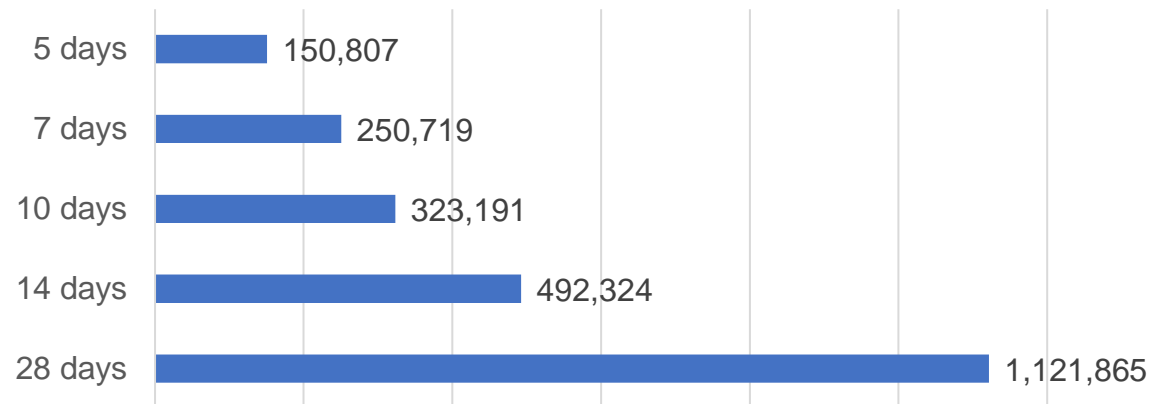
Doses Administered by Week



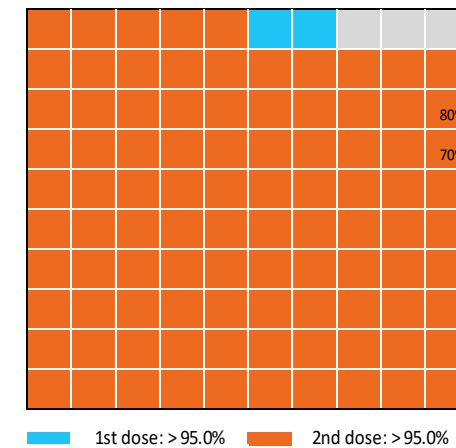
Doses by administration month and vaccine type



Doses Reported



Eligible population percentage coverage



\*Each square represents 1% of the national population.  
Squares are filled as milestones are achieved.

\*Sourced from the Australian Immunisation Register.

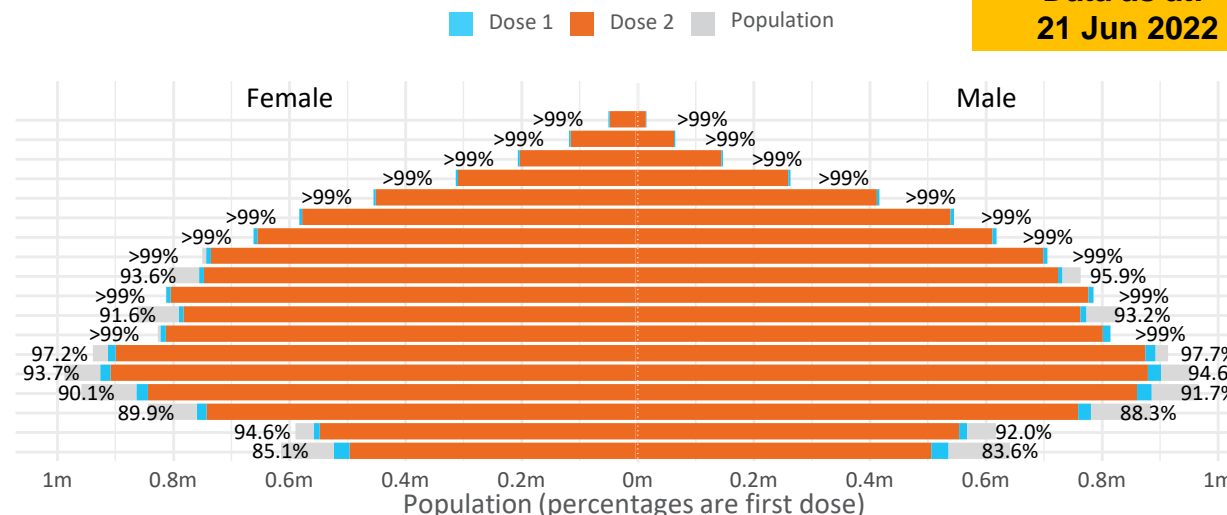
Data as at:  
21 Jun 2022

# Doses by age and sex

First and second doses by age and sex

	16+	50+	12-15	5-11
Dose 1	97.48% (20,100,031 doses / 20,619,959 people)	>99% (8,920,153 doses / 8,749,703 people)	84.38% (1,049,683 doses / 1,243,990 people)	52.39% (1,192,708 doses / 2,276,638 people)
Dose 2	95.85% (19,764,180 doses / 20,619,959 people)	>99% (8,812,741 doses / 8,749,703 people)	79.87% (993,534 doses / 1,243,990 people)	39.35% (895,826 doses / 2,276,638 people)

Age	Dose 1	Dose 2
95+	65,351 (>99%)	61,904 (>99%)
90-94	181,644 (>99%)	176,153 (>99%)
85-89	350,634 (>99%)	343,852 (>99%)
80-84	571,369 (>99%)	564,214 (>99%)
75-79	864,230 (>99%)	855,803 (>99%)
70-74	1,118,898 (>99%)	1,107,594 (>99%)
65-69	1,270,293 (>99%)	1,255,547 (>99%)
60-64	1,437,889 (>99%)	1,421,488 (98.9%)
55-59	1,475,540 (94.9%)	1,458,848 (93.8%)
50-54	1,584,305 (>99%)	1,567,338 (>99%)
45-49	1,550,838 (92.5%)	1,532,459 (91.4%)
40-44	1,625,009 (>99%)	1,601,001 (98.8%)
35-39	1,793,358 (97.7%)	1,761,166 (96.0%)
30-34	1,819,226 (94.6%)	1,777,256 (92.4%)
25-29	1,743,633 (91.5%)	1,695,847 (88.9%)
20-24	1,532,006 (89.5%)	1,491,881 (87.1%)
16-19	1,115,808 (93.3%)	1,091,829 (91.3%)
12-15	1,049,683 (84.4%)	993,534 (79.9%)



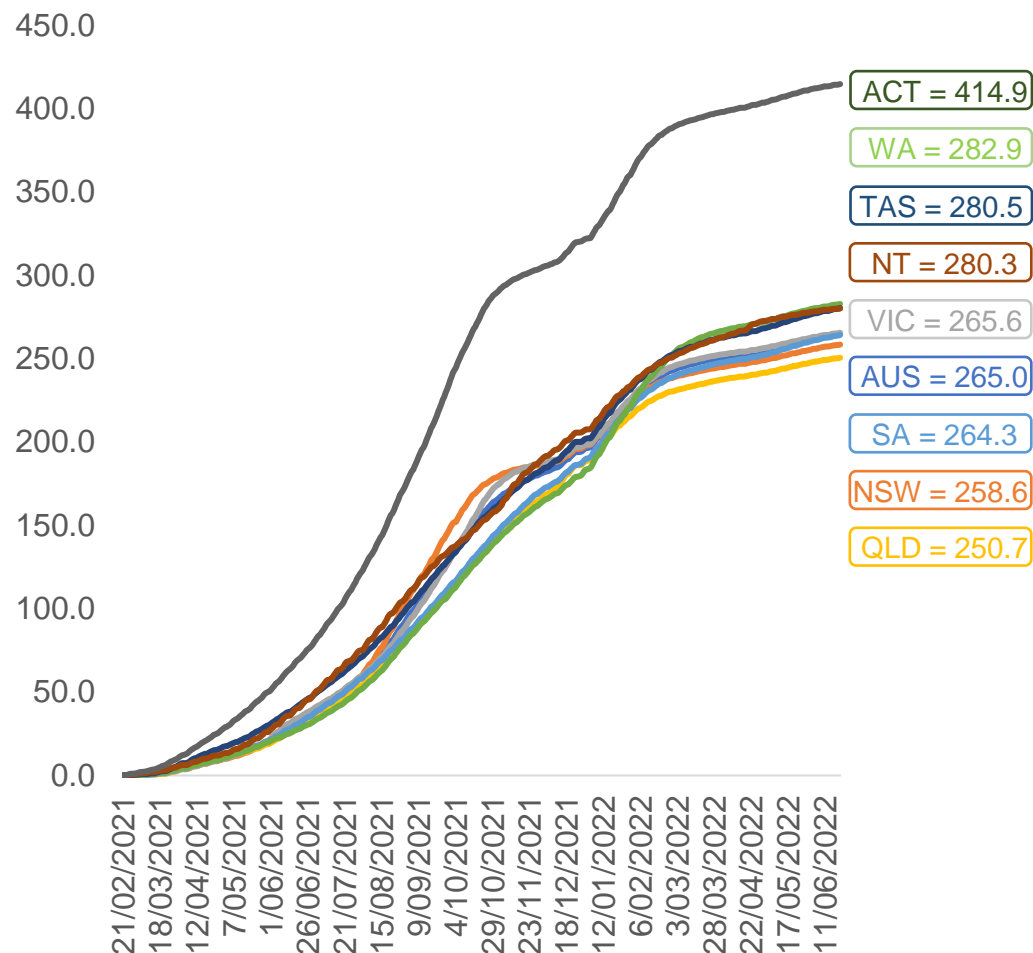
	AUS	ACT	NSW	NT	QLD	SA	TAS	VIC	WA
16 and over - dose 1	20,100,031	353,290	6,339,439	173,935	3,870,863	1,378,181	445,818	5,172,240	2,099,321
16 and over - dose 2	19,764,180	347,581	6,241,588	169,262	3,807,151	1,348,903	436,844	5,094,032	2,068,227
16 and over - population	20,619,959*	344,037	6,565,651	190,571	4,112,707	1,440,400	440,172	5,407,574	2,114,978
16 and over % with dose 1	97.48%	>99%	96.55%	91.27%	94.12%	95.68%	>99%	95.65%	>99%
16 and over % with dose 2	95.85%	>99%	95.06%	88.82%	92.57%	93.65%	>99%	94.20%	97.79%
5 to 11 - dose 1	1,192,708	31,787	356,197	13,151	206,526	83,738	28,473	324,723	140,428
5 to 11 - dose 2	895,826	27,232	273,704	8,748	149,120	62,998	23,018	244,743	101,639
5 to 11 - population	2,276,638	39,789	716,460	24,750	478,731	148,816	45,033	578,499	244,154
5 to 11 % with dose 1	52.39%	79.89%	49.72%	53.14%	43.14%	56.27%	63.23%	56.13%	57.52%
5 to 11 % with dose 2	39.35%	68.44%	38.20%	35.35%	31.15%	42.33%	51.11%	42.31%	41.63%
12 to 15 - dose 1	1,049,683	20,111	322,743	10,754	205,678	68,189	22,848	274,365	115,522
12 to 15 - dose 2	993,534	19,555	308,319	9,707	192,118	64,433	21,728	262,512	106,926
12 to 15 - population	1,243,990	19,693	390,330	13,060	270,146	82,747	26,308	308,611	132,869
12 to 15 % with dose 1	84.38%	>99%	82.68%	82.34%	76.14%	82.41%	86.85%	88.90%	86.94%
12 to 15 % with dose 2	79.87%	>99%	78.99%	74.33%	71.12%	77.87%	82.59%	85.06%	80.47%

\*National population will not equal sum of listed jurisdictions due to a small number of people counted in national population residing in some 'other' territories. Sum of state doses will not add to national total as some records are unable to be geocoded to a State or Territory.  
Doses sourced from Australian Immunisation Register, population from ABS ERP June 2020



# Vaccinations by location

Cumulative total doses administered vs eligible state populations\*

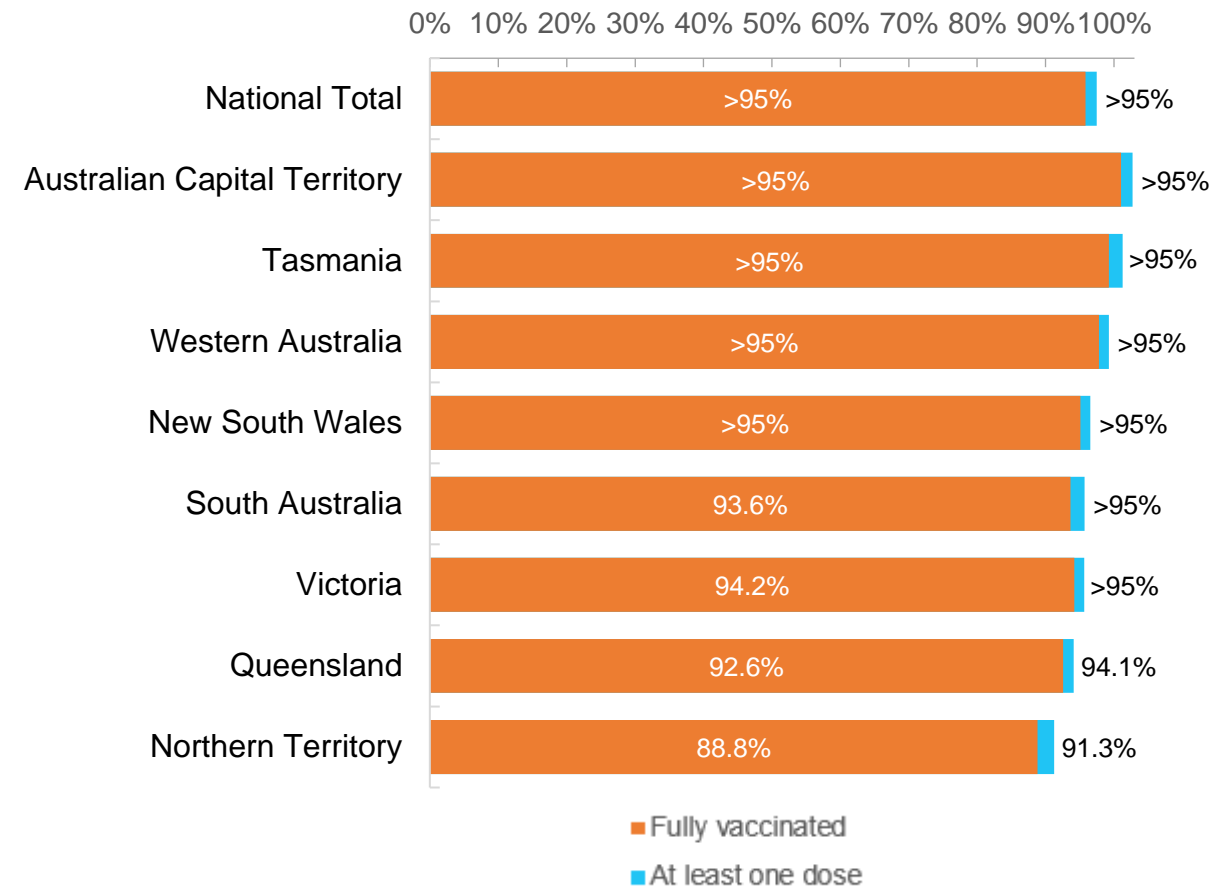


\*Not an indication of percentage vaccinated, numbers will exceed 100 due to multiple doses required per person of the population. All doses are included for those aged 12 and above, and are based on vaccination provider location.

Data as at:  
21 Jun 2022

Australia's COVID-19  
Vaccine Roadmap

First and Second Doses by residential location



# Aboriginal and Torres Strait Islander peoples

## Number of people vaccinated

Data as at:  
21 Jun 2022  
Updated weekly

Australia's COVID-19  
Vaccine Roadmap



**443,167**

people over the age of 16  
have had at least one dose

**85.0%**

of people over the age of 16  
have had at least one dose



**424,803**

people over the age of 16  
are fully vaccinated

**81.5%**

of people over the age of 16 are  
fully vaccinated



People aged 12 – 15 years

**47,996**

**42,134**

**67.9%**

**59.6%**

At least one dose

Fully vaccinated

### 178 Aboriginal community controlled health services (ACCHS)

0#

50

27

44

12

3

21

21

**ACT**

**NSW**

**NT**

**QLD**

**SA**

**TAS**

**VIC**

**WA**

Medicare Address State <sup>##</sup>	Individuals Dose 1	Individuals Dose 1 %	Individuals Dose 2	Individuals Dose 2 %
Australian Capital Territory	4,794	91.8%	4,674	89.5%
New South Wales	135,960	87.3%	132,912	85.4%
Northern Territory	41,475	89.7%	39,500	85.4%
Queensland	116,474	81.8%	111,127	78.1%
South Australia	20,061	80.5%	18,679	75.0%
Tasmania	13,895	88.8%	13,496	86.3%
Victoria	35,660	90.4%	34,885	88.4%
Western Australia	53,563	86.8%	49,891	80.8%
Unknown/Other Territories	21,285	70.3%	19,639	64.9%
<b>Totals</b>	<b>443,167</b>	<b>85.0%</b>	<b>424,803</b>	<b>81.5%</b>

Source: Australian Immunisation Register

\*Identifying as Aboriginal and Torres Strait Islander is optional and the estimated population may be under reported.

\*\*Includes all Aboriginal and Torres Strait Islander peoples who have received a vaccination, not limited to those administered in an ACCHS setting

#ACCHS in the ACT are currently operating as a Commonwealth Vaccine Clinics so not included to avoid double counting

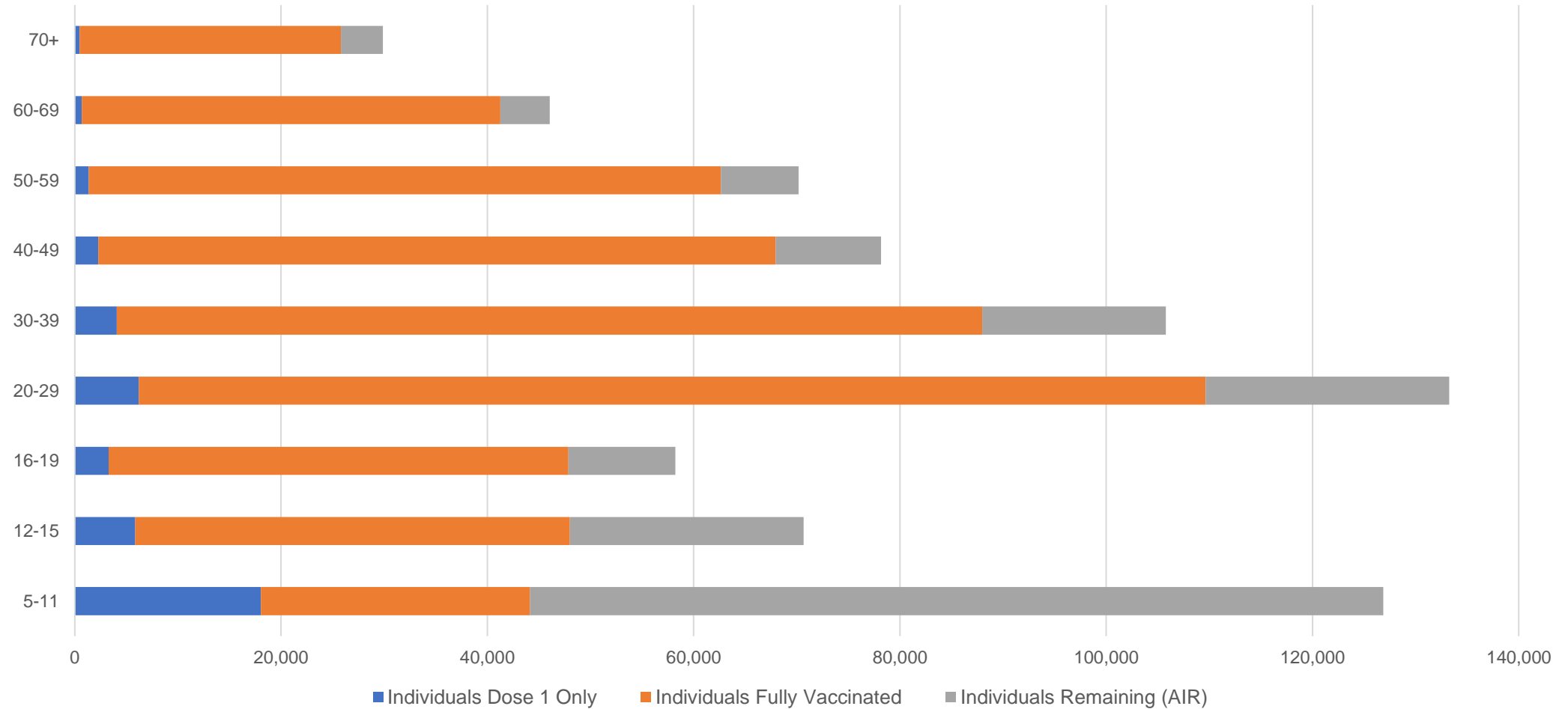
##The above table includes all identified Aboriginal and Torres Strait Islander people who are aged 16 and above by their state of residence.

# Aboriginal and Torres Strait Islander peoples

## Number of people vaccinated by age

Data as at:  
21 Jun 2022  
Updated weekly

Australia's COVID-19  
Vaccine Roadmap



Source: Australian Immunisation Register

# Commonwealth primary care

Data as at:  
21 Jun 2022

Australia's COVID-19  
Vaccine Roadmap



## Primary care vaccine administration sites

<b>5,709</b>	<b>128</b>	<b>178</b>	<b>3,614</b>
GPs	CVCs	ACCHS	Pharmacies



**37,433,826** total vaccine doses administered  
primary care settings as at 21 June  
**+ 42,065** recorded in the last 24 hours

## Primary care vaccinations by provider type

	Doses administered	Daily increase	7 day increase
General Practice* includes other Commonwealth	29,937,045	30,301	155,863
Pharmacy	7,496,781	11,764	67,161

**NSW**  
**12,909,561**  
(+15,031 daily increase)

**VIC**  
**9,292,477**  
(+9,567 daily increase)

**QLD**  
**7,205,093**  
(+8,402 daily increase)

**WA**  
**3,933,211**  
(+3,847 daily increase)

**TAS**  
**712,289**  
(+1,252 daily increase)

**SA**  
**2,249,661**  
(+3,195 daily increase)

**ACT**  
**591,626**  
(+696 daily increase)

**NT**  
**221,394**  
(+176 daily increase)

**318,514**

doses administered to persons  
residing in other territories or with  
missing residential information

\*General practice includes Commonwealth Vaccination Clinics, Aboriginal Community Health Centres, Royal Flying Doctor Service and other Commonwealth vaccination facilities

Source: Australian Immunisation Register

Data as at:  
21 Jun 2022

# Commonwealth aged care and disability doses administered



**1,313,988** (+ 819 last 24 hours)

Total vaccine doses administered in aged care and disability facilities as at 21 June

Number of doses administered as part of the Commonwealth aged and disability care rollout

**NSW**  
**571,450**  
(+342 daily increase)

**VIC**  
**247,136**  
(+110 daily increase)

**QLD**  
**208,917**  
(+54 daily increase)

**WA**  
**111,876**  
(+152 daily increase)

**TAS**  
**23,651**  
(<10 daily increase)

**SA**  
**86,304**  
(+77 daily increase)

**ACT**  
**17,894**  
(+12 daily increase)

**NT**  
**7,690**  
(<10 daily increase)

**39,070**

doses administered to persons  
residing in other territories or with  
missing residential information

\*Sourced from the Australian Immunisation Register. Includes all persons vaccinated at participating residential aged care, disability and related industry settings.

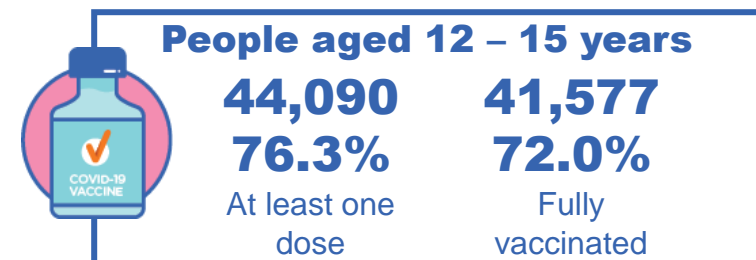
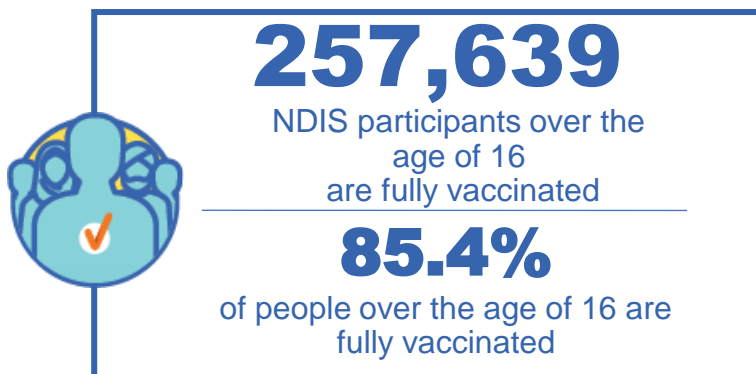
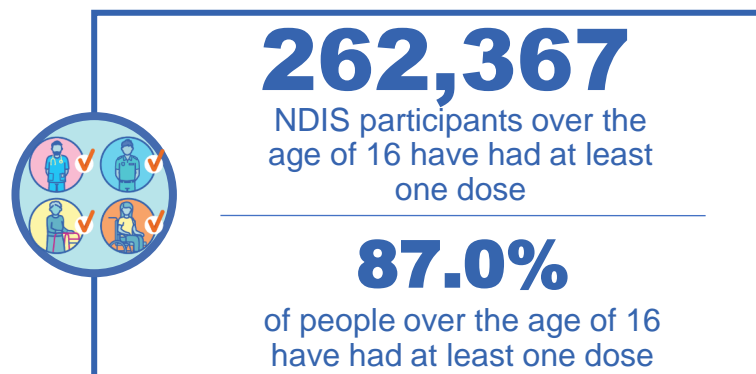
\*\*State level breakdown indicates the residential location and may not align to the state in which the vaccination occurred.

Source: Australian Immunisation Register

# National Disability Insurance Scheme (NDIS) reported vaccinations

Data as at:  
16 June 2022  
Updated weekly

Australia's COVID-19  
Vaccine Roadmap



## NDIS participant vaccinations

	People aged 16+ with at least one dose	People aged 16+ fully vaccinated	% People aged 16+ with at least one dose	% People aged 16+ fully vaccinated
ACT	4,940	4,877	89.0%	87.9%
NSW	80,332	79,051	87.5%	86.1%
NT	2,281	2,213	78.1%	75.8%
QLD	52,006	51,023	85.3%	83.7%
SA	21,490	20,986	84.8%	82.8%
TAS	6,558	6,403	87.3%	85.2%
VIC	69,685	68,523	88.1%	86.7%
WA	25,075	24,563	88.3%	86.5%
National	262,367	257,639	87.0%	85.4%

Source: Linkage between National Disability Insurance Agency data and the Australian Immunisation Register. Total NDIS participant numbers as at 30 May. Australian Immunisation Register data as at 15 June. Includes all participants regardless of residence type.

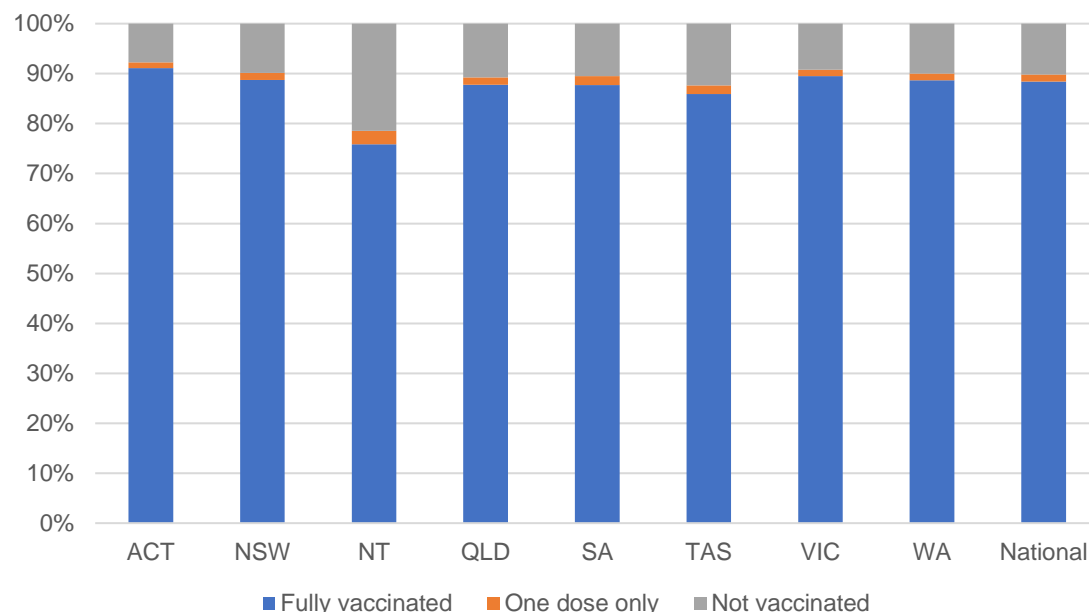
# National Disability Insurance Scheme (NDIS) reported vaccinations

Data as at:  
16 June 2022  
Updated weekly

Australia's COVID-19  
Vaccine Roadmap

NATIONAL	Total people with at least one dose	People fully vaccinated	Total number of individuals in cohort	% People with at least one dose	% People fully vaccinated
NDIS participants living in disability accommodation	21,116	20,787	23,469	90.0%	88.6%

## NDIS participants in disability and aged care accommodation



Source: Linkage between National Disability Insurance Agency data and the Australian Immunisation Register. Includes participants residing in disability accommodation only.

Source: Total NDIS participant numbers as at 30 May. Participant data as at 14 June. Australian Immunisation Register data as at 15 June. Worker data as at 15 June.

## NDIS workforce vaccinations

	NDIS workers with at least one dose	NDIS workers fully vaccinated	% NDIS workers with at least one dose	% NDIS workers fully vaccinated
NSW	127,155	121,812	98.2%	94.1%
VIC	117,930	114,648	98.4%	95.6%
QLD	71,443	70,577	97.8%	96.7%
WA	34,538	33,109	98.8%	94.7%
SA	35,963	33,926	98.6%	93.0%
TAS	10,800	10,584	99.5%	97.5%
ACT	12,340	12,313	99.8%	99.6%
NT	3,934	3,776	99.6%	95.6%
<b>TOTAL</b>	<b>414,103</b>	<b>400,745</b>	<b>98.4%</b>	<b>95.2%</b>

Source: the NDIS Commission has established a requirement for registered NDIS providers who provide intensive disability support services to report on the vaccination status of workers they employ, or otherwise engage, to deliver NDIS-funded supports and services, and who are required to be vaccinated in accordance with in-force state and territory public health orders. The statistics reflect data reported to the NDIS Commission by registered NDIS providers and should be considered indicative and subject to change

Note: Some registered NDIS providers are yet to report on the vaccination status of their workforce. The NDIS Commission is working with those providers around reporting requirements.

Remaining workers not included include those exempt from vaccination requirements, workers whose vaccination status is not yet verified by the provider (such as workers on leave) and provider reporting anomalies.



# Residential aged care vaccination rollout

Residential aged care facilities status

**176,781**

People fully vaccinated

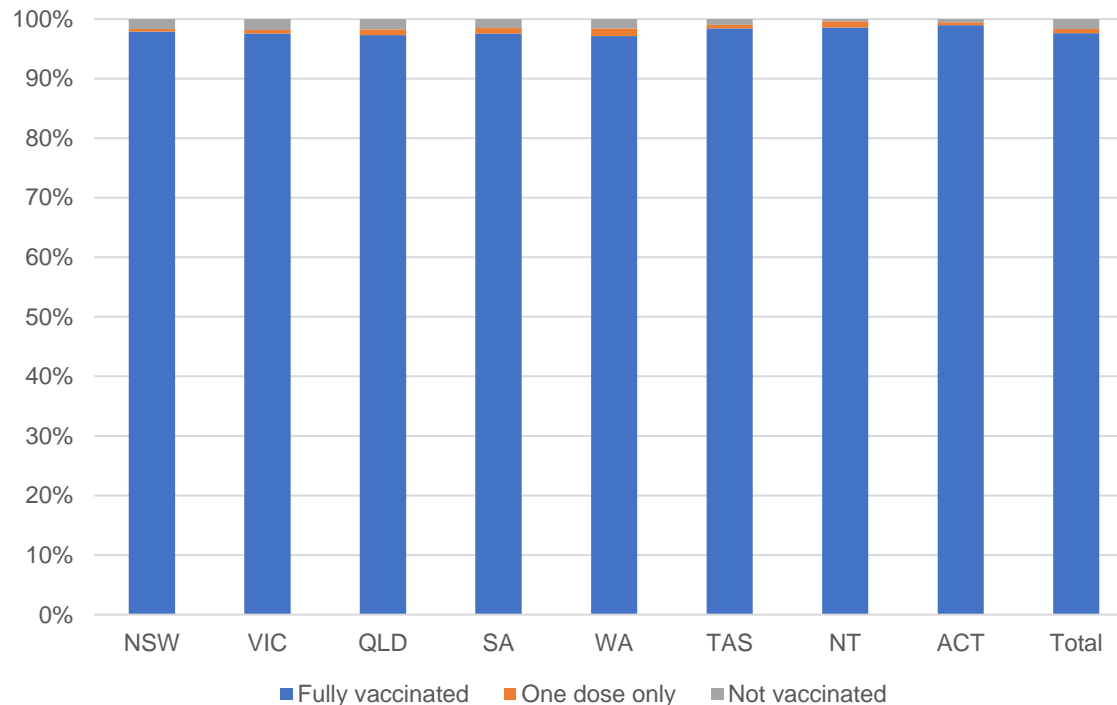
**178,054**

People with at least one dose

Australia's COVID-19 Vaccine Roadmap

Data as at:  
16 June 2022  
Updated weekly

## Aged care resident vaccinations



## Aged care worker vaccinations

Jurisdictions	Total workers with at least one dose	Workers fully vaccinated	% Workers with at least one dose	% Workers fully vaccinated
NSW	77,698	77,685	99.9%	99.8%
VIC	70,768	70,765	99.5%	99.5%
QLD	48,221	48,216	99.6%	99.6%
SA	27,347	27,337	100.0%	100.0%
WA	24,532	24,527	100.0%	100.0%
TAS	7,647	7,646	100.0%	100.0%
NT	939	939	100.0%	100.0%
ACT	2,920	2,920	100.0%	100.0%
Total	260,072	260,035	99.8%	99.7%

Source: Residential aged care provider self-reported COVID-19 vaccination information

\*Status updates are provided by facilities at least once per week. Reporting is updated Monday to Friday to encompass different facility updates being made on different days.

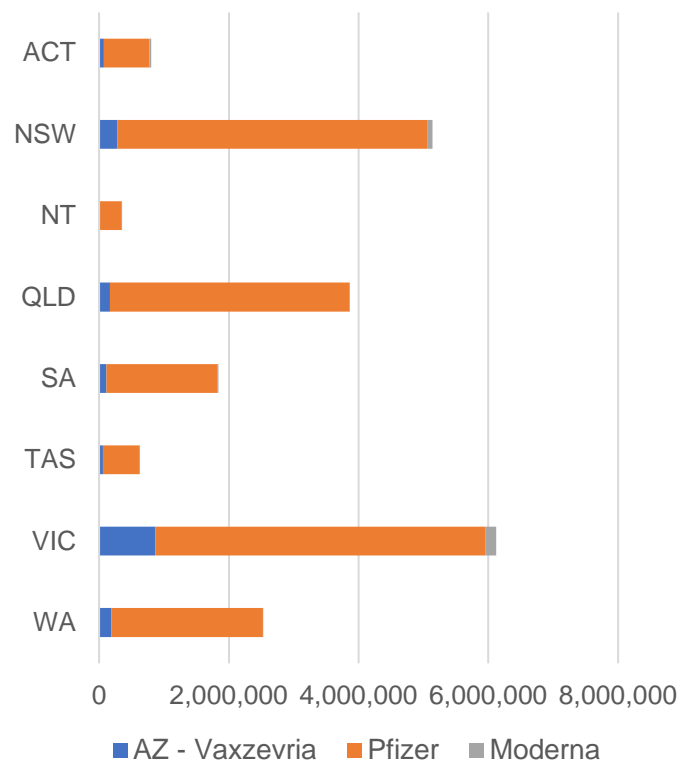
Data is sourced directly from Aged Care Service Providers and is not drawn or closely aligned with data from AIR due to inconsistencies and potential lags in uploading of records.



Data as at:  
21 Jun 2022

## Jurisdiction administered

Total vaccine doses administered in State and Territory clinics as at 21 June



**21,276,553** total vaccine doses administered  
in State and Territory clinics as at 21 June  
+ **3,028** recorded in the last 24 hours  
+ **23,724** recorded in the last 7 days

**NSW**  
**5,138,959**  
(+206 daily  
increase)

**VIC**  
**6,126,901**  
(+922 daily  
increase)

**QLD**  
**3,860,149**  
(+215 daily  
increase)

**WA**  
**2,529,114**  
(+474 daily  
increase)

**TAS**  
**627,704**  
(<10 daily  
increase)

**SA**  
**1,841,736**  
(+657 daily  
increase)

**ACT**  
**805,005**  
(+499 daily  
increase)

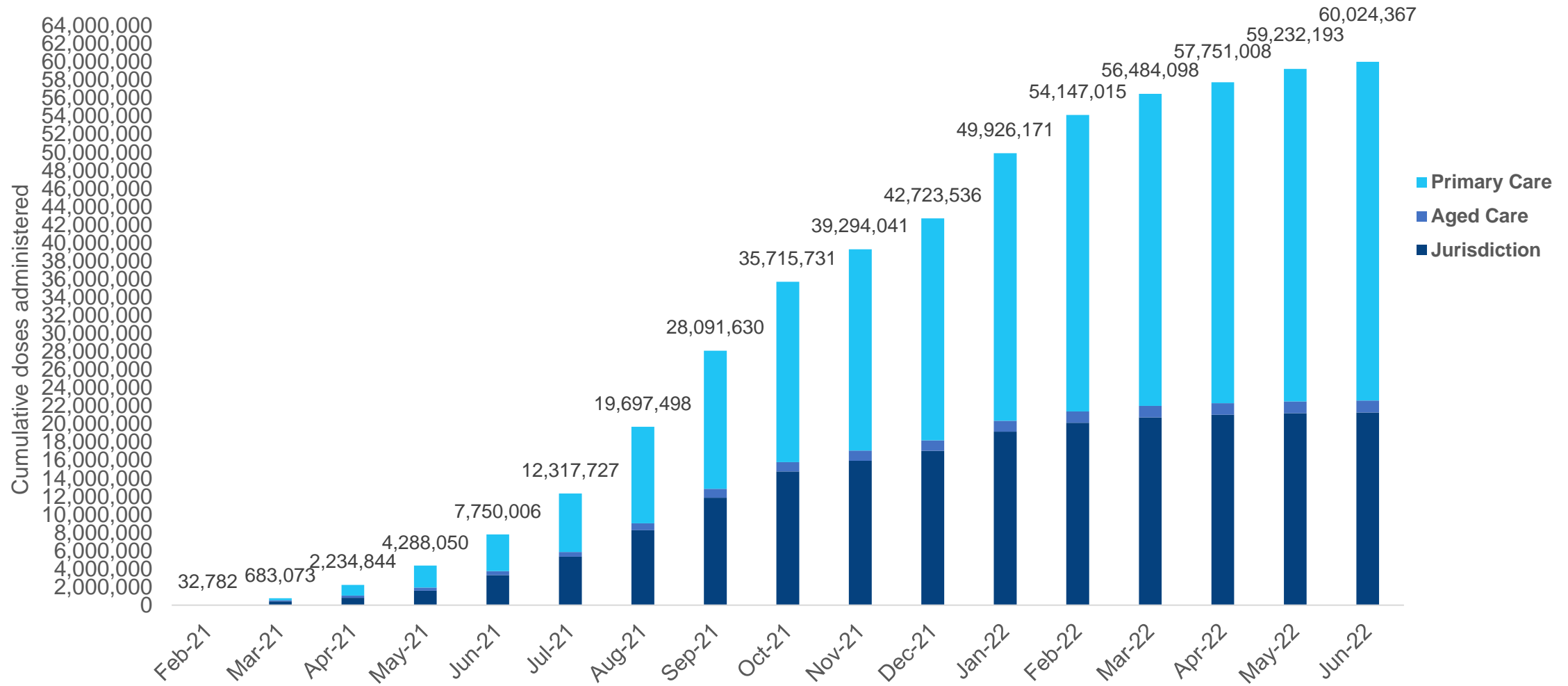
**NT**  
**346,985**  
(+56 daily  
increase)

\*Sourced from the Australian Immunisation Register. Numbers are calculated as difference in daily cumulative reported numbers to allow for historical corrections.

# Cumulative doses administered by channel

Data as at:  
21 Jun 2022

Australia's COVID-19  
Vaccine Roadmap

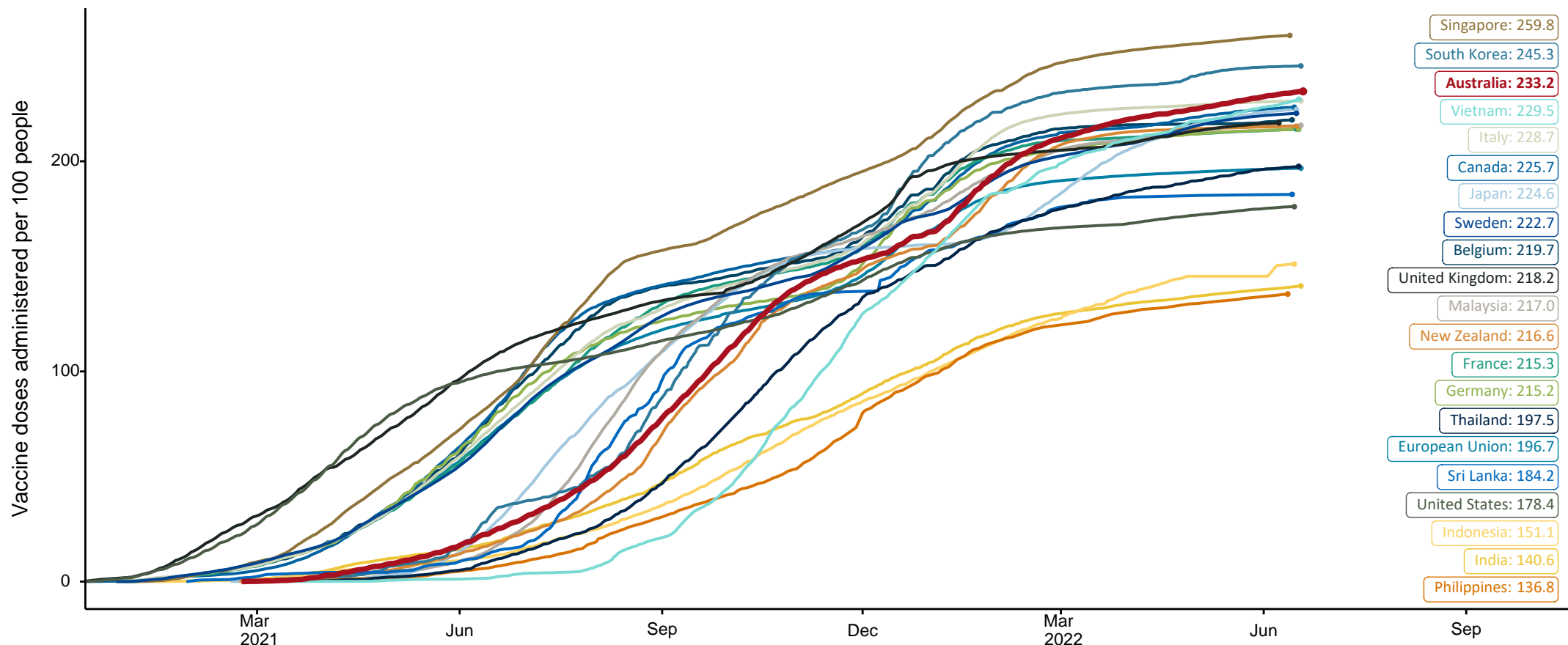


Source: Australian Immunisation Register

# COVID-19 vaccine doses per 100, Australia and select countries

Data as at:  
19 June 2022  
Updated weekly

Australia's COVID-19  
Vaccine Roadmap



Note: From 11 January 2022, data for Australia includes all doses administered to people 5 and over. Prior to 11 January, data was for 12 and over.

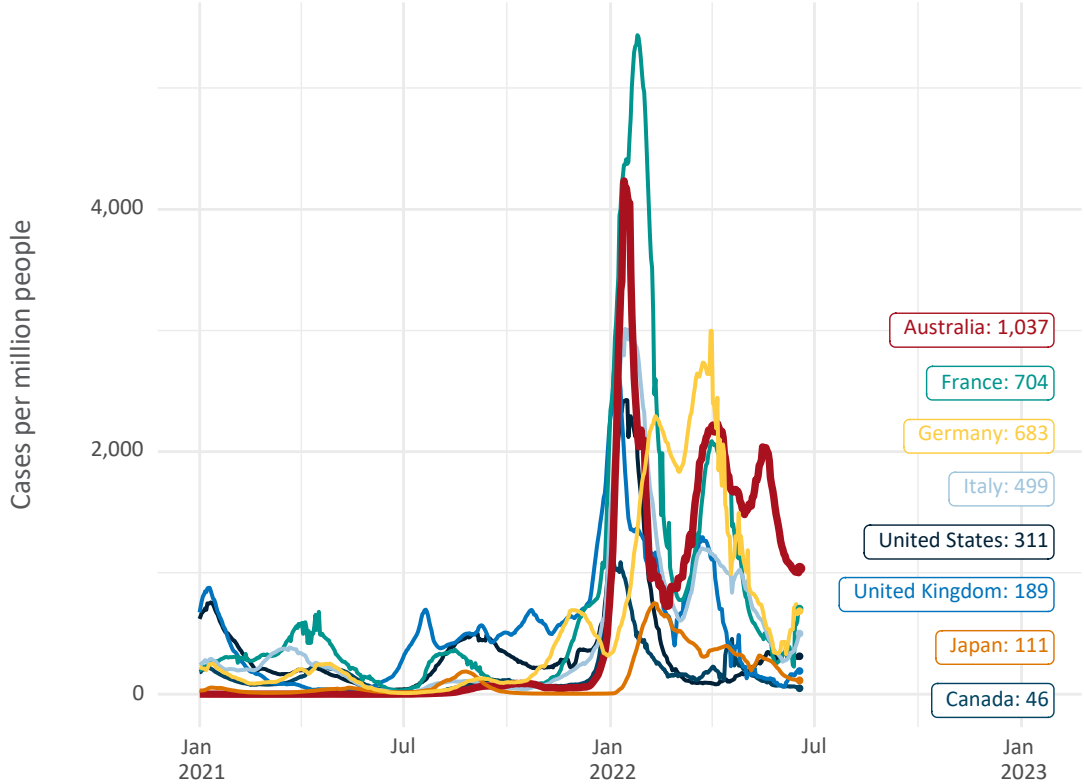
Source: Department of Health (Australia), Our World in Data (international)

Latest data: 19 June

# International data – COVID-19

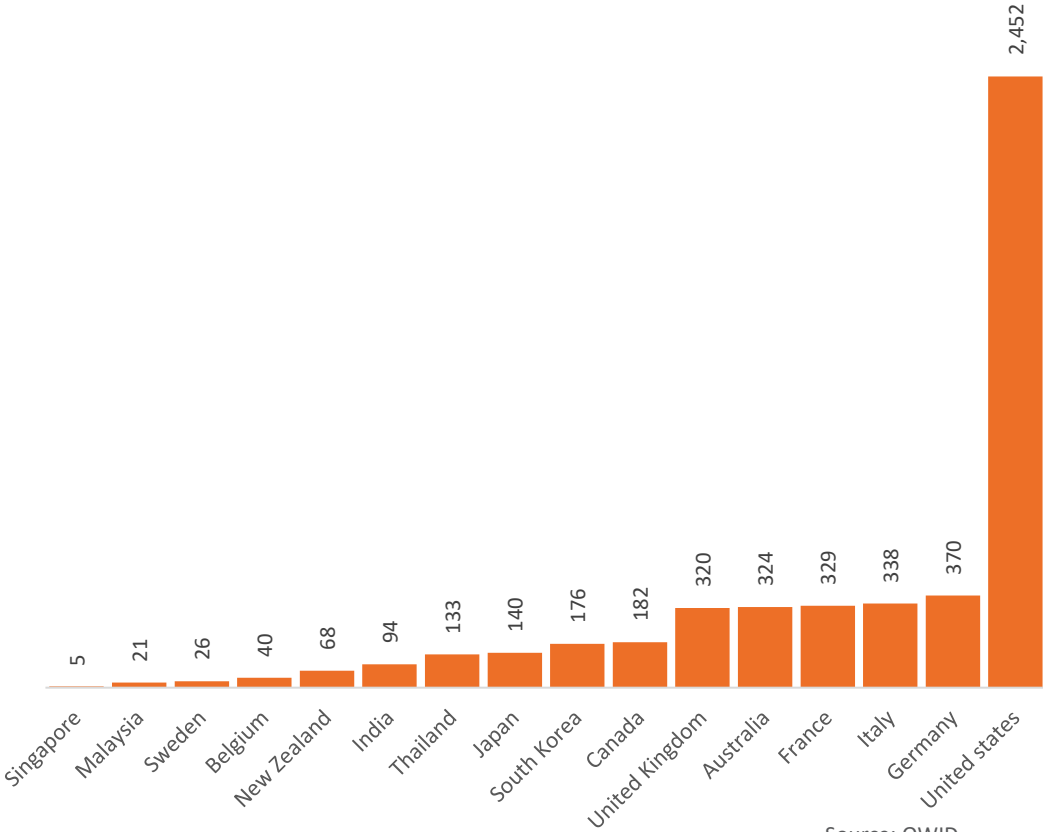
Data as at:  
19 June 2022  
Updated weekly

New daily cases per million since 2021, Australia and G7 countries  
Smoothed - 7 day average



Source: OWID  
Data downloaded: 20 Jun 2022 09:21  
Latest data: 18 Jun 2022

COVID-19 deaths in past 7 days - Australia and select countries



Source: OWID  
Data downloaded: 20 Jun 2022 09:21  
Latest data: 18 Jun 2022