



Australian Government
Operation COVID Shield

COVID-19 Vaccine Roll-out

21 June 2022

Data as at:
20 Jun 2022

Total vaccine doses



59,978,455 total vaccine doses administered nationally as at 20 June

+40,396 recorded in the last 24 hours



20,098,362

people have had at least one dose

>95%

of people over the age of 16 have had at least one dose



19,762,568

people are fully vaccinated

>95%

of people over the age of 16 are fully vaccinated



13,831,558

people over the age of 16 who have received three or more doses

NSW
18,604,038
(+13,176 daily increase)

VIC
15,740,440
(+9,787 daily increase)

QLD
11,341,390
(+7,204 daily increase)

WA
6,598,416
(+4,011 daily increase)

TAS
1,359,737
(+1,216 daily increase)

SA
4,169,442
(+3,606 daily increase)

ACT
1,571,261
(+1,174 daily increase)

NT
593,731
(+222 daily increase)

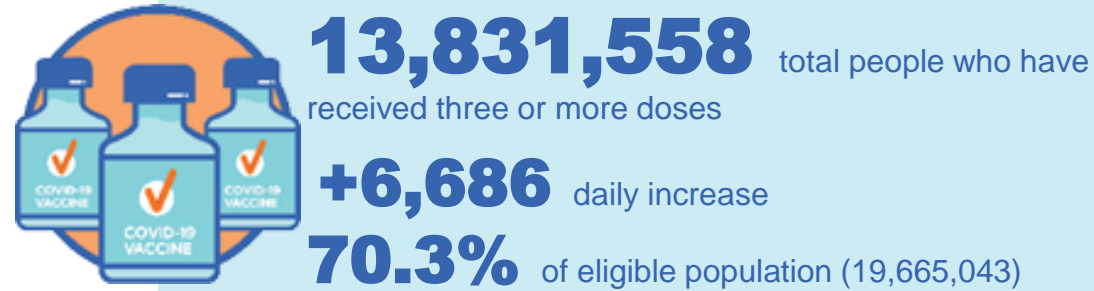
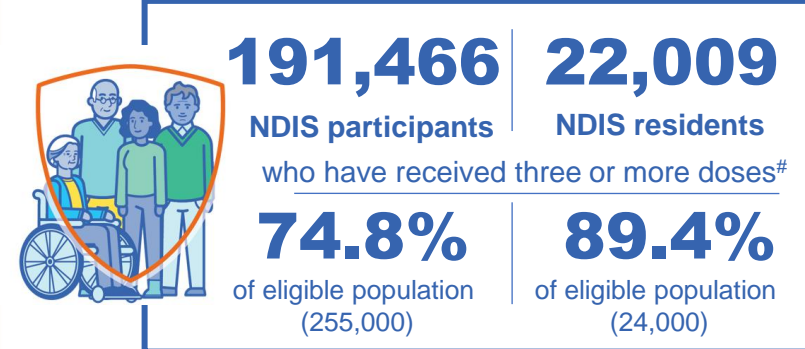
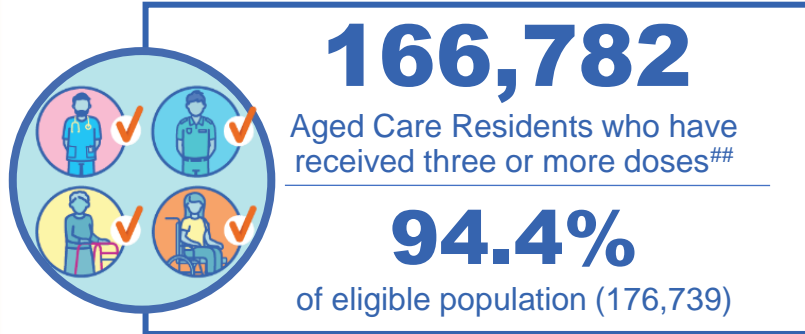
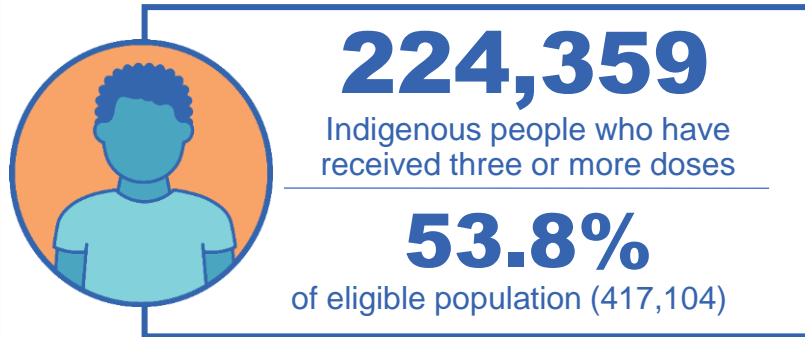
*Administration state breakdown indicates state in which a vaccine was administered

**Overall dose count includes instances of more than three doses per person in a small number of cases.

Source: Australian Immunisation Register

Booster Vaccinations

Data as at:
20 Jun 2022



	Number of People	Daily Increase	% of Eligible
NSW	4,219,832	2,223	67.8%
VIC	3,689,595	1,660	72.7%
QLD	2,395,758	1,229	63.4%
WA	1,698,228	623	82.9%
SA	988,218	711	73.8%
TAS	316,253	176	72.8%
ACT	273,278	109	78.8%
NT	131,084	52	78.0%

119,312

doses administered to persons residing in other territories or with missing residential information

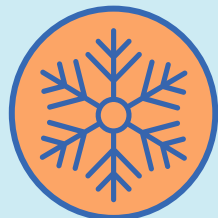
*People may belong to multiple groups and could be represented in the above breakdowns multiple times.
NDIS participants data as at 14 June 2022. ## Aged Care Residents data as at 20 June 2022.

Source: Australian Immunisation Register

Winter / Fourth Doses

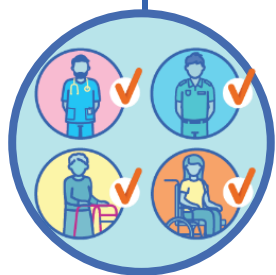
Data as at:
20 Jun 2022

Australia's COVID-19
Vaccine Roadmap



2,117,829 total people (16+) who have received four or more doses

+30,109 daily increase



1,874,888

People aged 65+ who have received four or more doses

55.1%

of eligible population (3,404,493)

	Number of People 16+	Daily Increase
ACT	41,600	437
NSW	683,749	9,982
NT	9,177	124
QLD	402,085	5,362
SA	171,071	2,675
TAS	59,121	1,047
VIC	531,096	7,223
WA	209,649	3,156

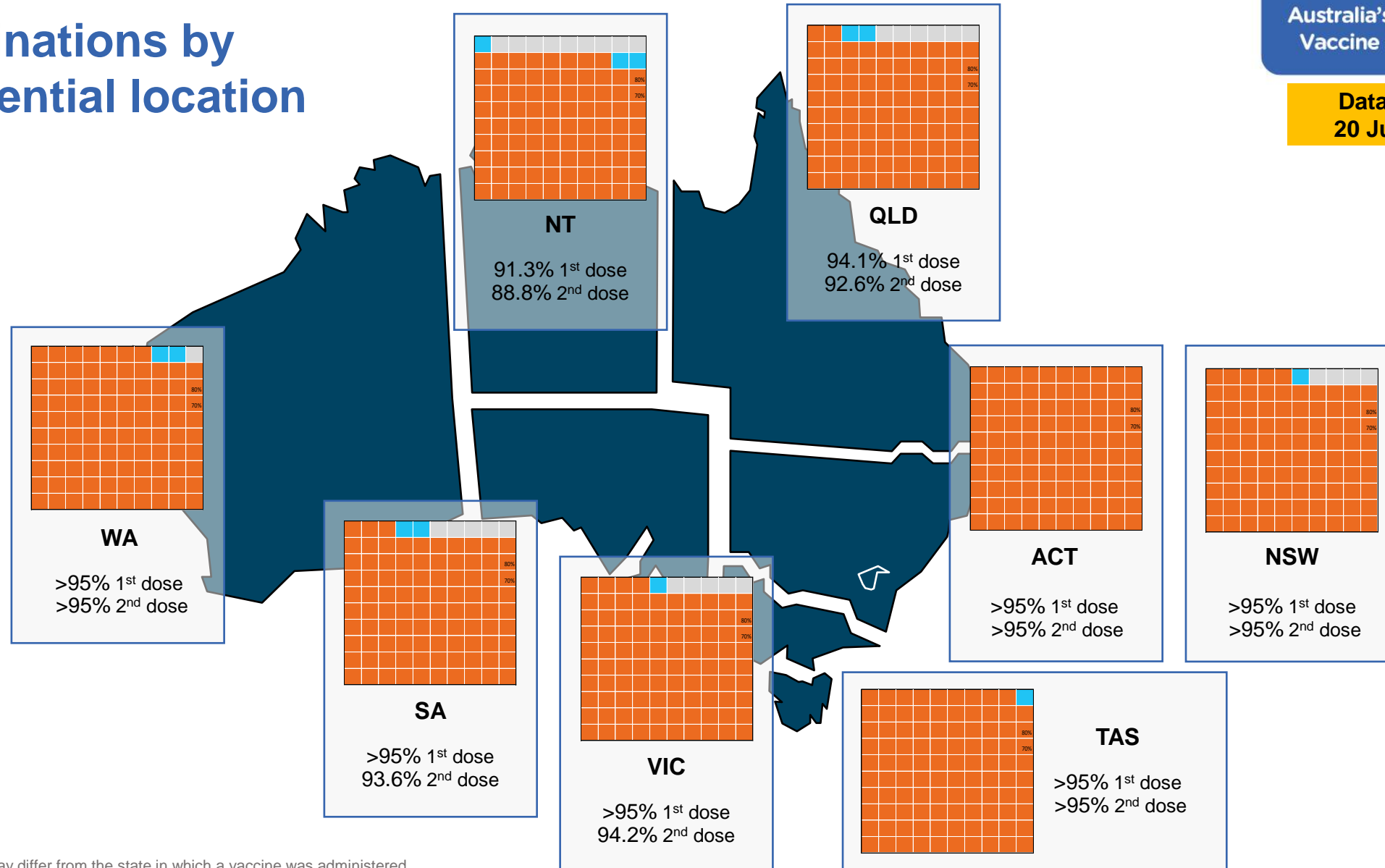
10,281 doses administered to persons residing in other territories or with missing residential information

*People become eligible for a winter booster four months after their third dose.

Source: Australian Immunisation Register

Data as at:
20 Jun 2022

Vaccinations by residential location



*Residential state may differ from the state in which a vaccine was administered

Commonwealth and Jurisdiction vaccine doses administered

Data as at:
20 Jun 2022



59,978,455 total vaccine doses administered nationally as at 20 June

+ 40,396 recorded in the last 24 hours

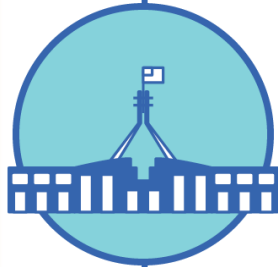


21,273,525

doses administered by state and territory facilities

+ 3,475

recorded in the last 24 hours



38,704,930

doses administered by commonwealth facilities

+ 36,921

recorded in the last 24 hours

37,391,761 total vaccine doses administered in primary care settings

1,313,169 total vaccine doses administered in aged care and disability settings

NSW	Jurisdictions	Commonwealth
Cumulative	5,138,753	13,465,285
Daily increase	477	12,699

VIC	Jurisdictions	Commonwealth
Cumulative	6,125,979	9,614,461
Daily increase	872	8,915

QLD	Jurisdictions	Commonwealth
Cumulative	3,859,934	7,481,456
Daily increase	213	6,991

WA	Jurisdictions	Commonwealth
Cumulative	2,528,640	4,069,776
Daily increase	484	3,527

TAS	Jurisdictions	Commonwealth
Cumulative	627,705	732,032
Daily increase	64	1,152

SA	Jurisdictions	Commonwealth
Cumulative	1,841,079	2,328,363
Daily increase	715	2,891

ACT	Jurisdictions	Commonwealth
Cumulative	804,506	766,755
Daily increase	588	586

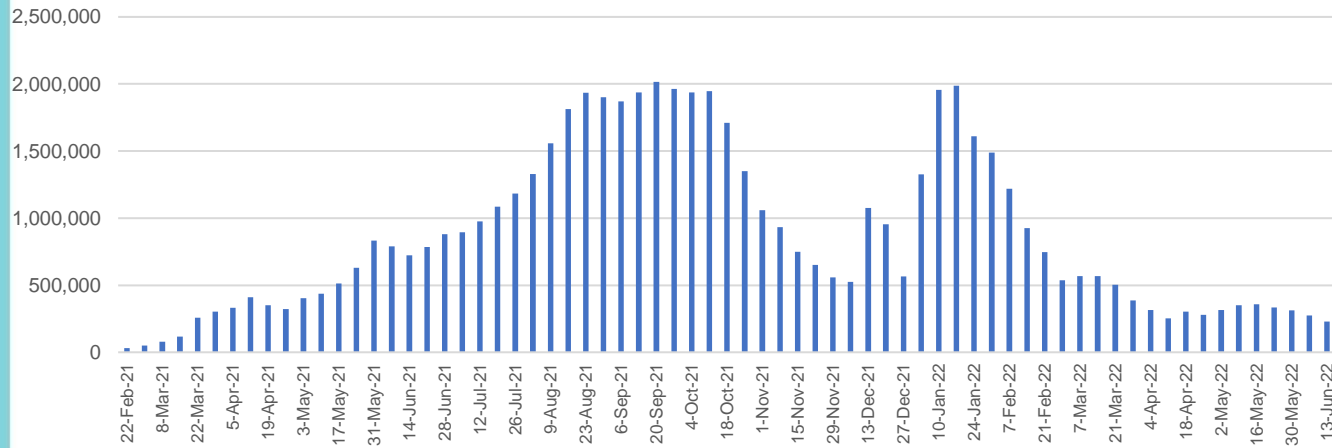
NT	Jurisdictions	Commonwealth
Cumulative	346,929	246,802
Daily increase	62	160

Vaccine milestone charts

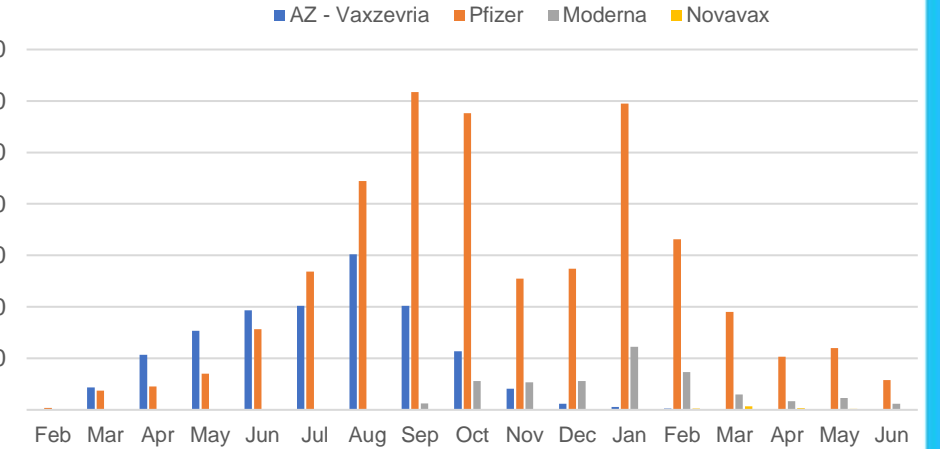
Data as at:
20 Jun 2022

Australia's COVID-19
Vaccine Roadmap

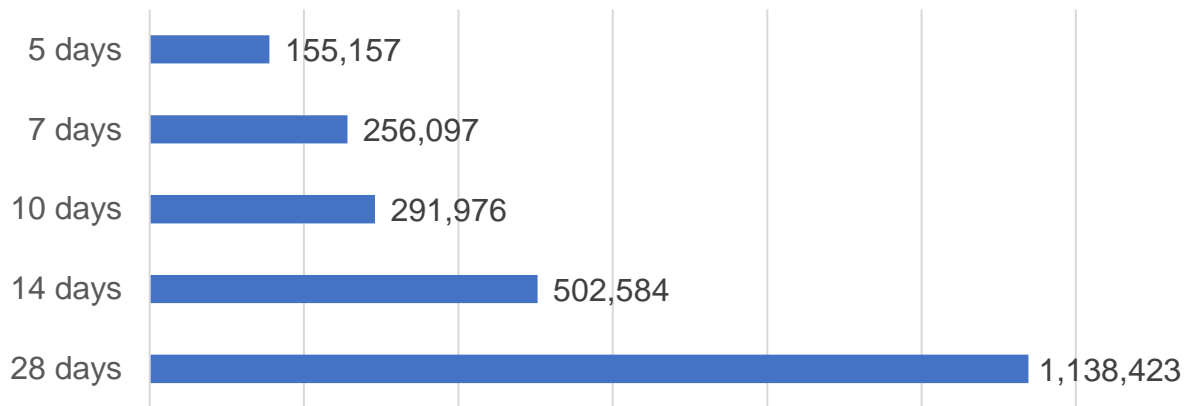
Doses Administered by Week



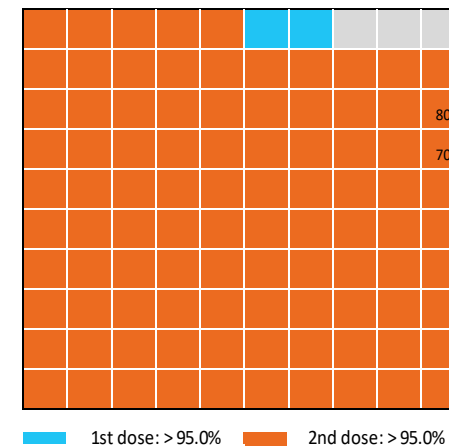
Doses by administration month and vaccine type



Doses Reported



Eligible population percentage coverage



*Each square represents 1% of the national population. Squares are filled as milestones are achieved.

*Sourced from the Australian Immunisation Register.

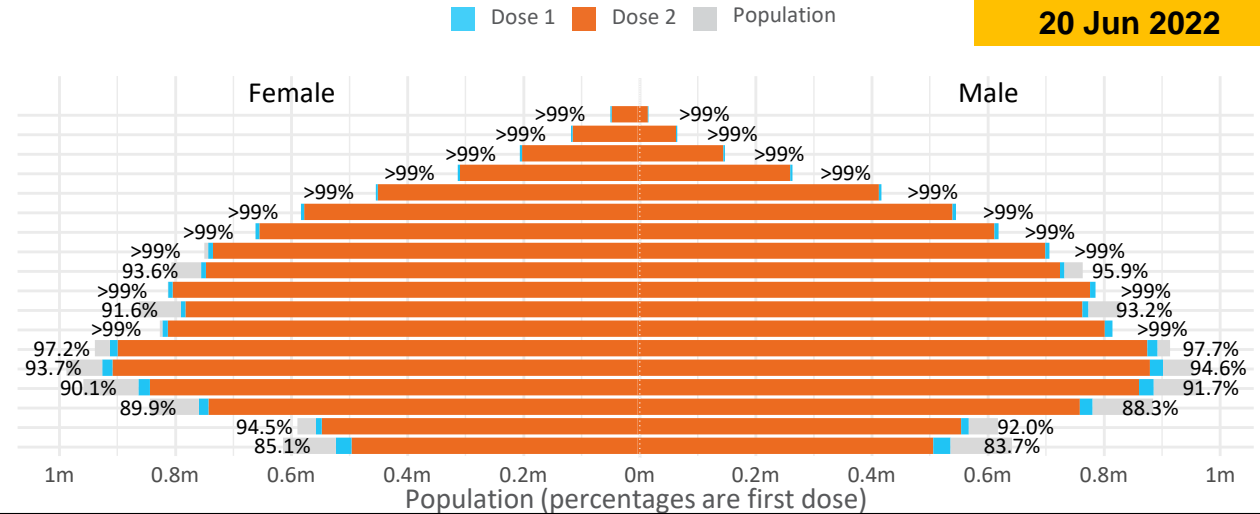
Doses by age and sex

First and second doses by age and sex

	16+	50+	12-15	5-11
Dose 1	97.47% (20,098,362 doses / 20,619,959 people)	>99% (8,919,006 doses / 8,749,703 people)	84.40% (1,049,891 doses / 1,243,990 people)	52.40% (1,193,009 doses / 2,276,638 people)
Dose 2	95.84% (19,762,568 doses / 20,619,959 people)	>99% (8,811,653 doses / 8,749,703 people)	79.88% (993,741 doses / 1,243,990 people)	39.33% (895,352 doses / 2,276,638 people)

Data as at: 20 Jun 2022

Age	Dose 1	Dose 2
95+	65,291 (>99%)	61,847 (>99%)
90-94	181,554 (>99%)	176,055 (>99%)
85-89	350,518 (>99%)	343,742 (>99%)
80-84	571,236 (>99%)	564,078 (>99%)
75-79	864,019 (>99%)	855,597 (>99%)
70-74	1,118,888 (>99%)	1,107,593 (>99%)
65-69	1,270,108 (>99%)	1,255,388 (>99%)
60-64	1,437,694 (>99%)	1,421,300 (98.9%)
55-59	1,475,539 (94.9%)	1,458,854 (93.8%)
50-54	1,584,159 (>99%)	1,567,199 (>99%)
45-49	1,550,808 (92.5%)	1,532,432 (91.4%)
40-44	1,624,864 (>99%)	1,600,841 (98.8%)
35-39	1,793,290 (97.7%)	1,761,089 (96.0%)
30-34	1,819,159 (94.6%)	1,777,202 (92.4%)
25-29	1,743,828 (91.5%)	1,696,028 (89.0%)
20-24	1,531,954 (89.5%)	1,491,853 (87.1%)
16-19	1,115,453 (93.3%)	1,091,470 (91.3%)
12-15	1,049,891 (84.4%)	993,741 (79.9%)



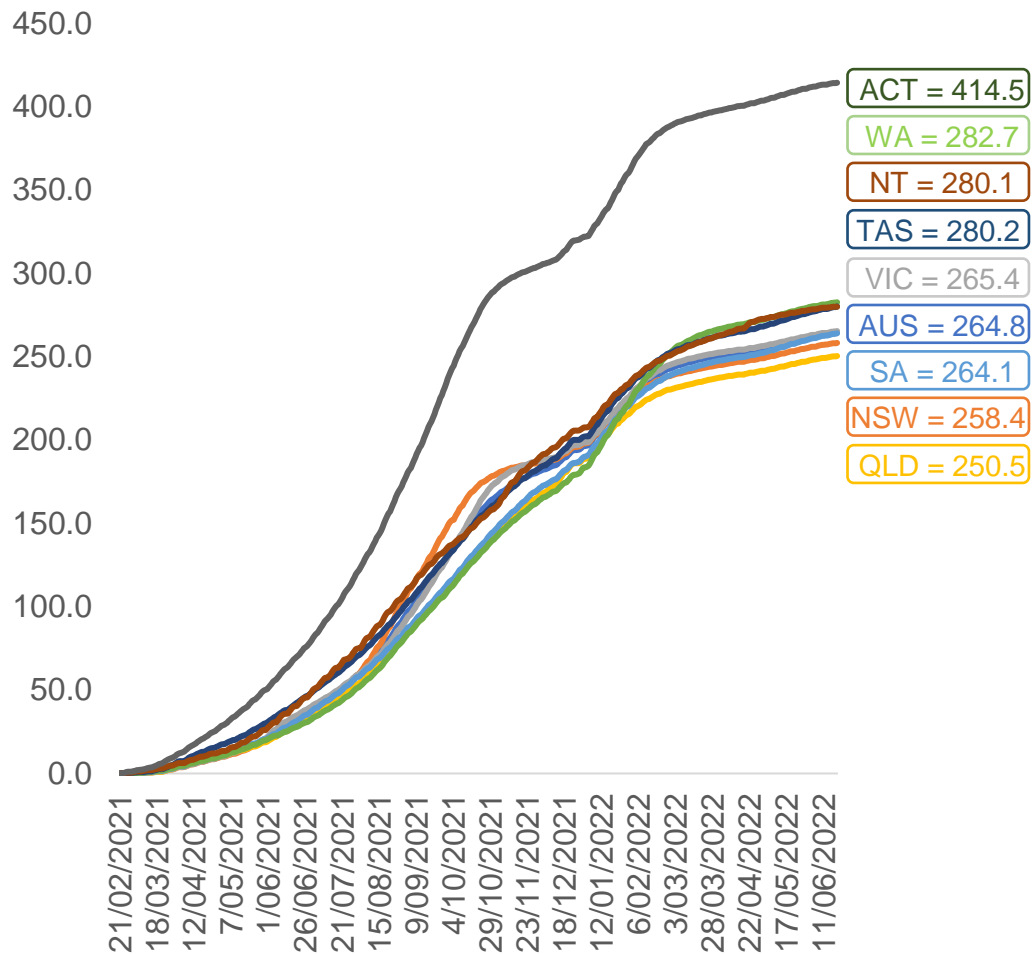
	AUS	ACT	NSW	NT	QLD	SA	TAS	VIC	WA
16 and over - dose 1	20,098,362	353,258	6,338,922	173,938	3,870,389	1,378,051	445,799	5,171,855	2,099,100
16 and over - dose 2	19,762,568	347,546	6,241,142	169,264	3,806,656	1,348,780	436,804	5,093,682	2,068,001
16 and over - population	20,619,959*	344,037	6,565,651	190,571	4,112,707	1,440,400	440,172	5,407,574	2,114,978
16 and over % with dose 1	97.47%	>99%	96.55%	91.27%	94.11%	95.67%	>99%	95.64%	>99%
16 and over % with dose 2	95.84%	>99%	95.06%	88.82%	92.56%	93.64%	>99%	94.20%	97.78%
5 to 11 - dose 1	1,193,009	31,798	356,252	13,160	206,595	83,743	28,483	324,791	140,468
5 to 11 - dose 2	895,352	27,224	273,460	8,747	149,089	62,932	23,009	244,655	101,592
5 to 11 - population	2,276,638	39,789	716,460	24,750	478,731	148,816	45,033	578,499	244,154
5 to 11 % with dose 1	52.40%	79.92%	49.72%	53.17%	43.15%	56.27%	63.25%	56.14%	57.53%
5 to 11 % with dose 2	39.33%	68.42%	38.17%	35.34%	31.14%	42.29%	51.09%	42.29%	41.61%
12 to 15 - dose 1	1,049,891	20,101	322,861	10,759	205,707	68,195	22,843	274,420	115,523
12 to 15 - dose 2	993,741	19,553	308,428	9,711	192,170	64,437	21,716	262,553	106,932
12 to 15 - population	1,243,990	19,693	390,330	13,060	270,146	82,747	26,308	308,611	132,869
12 to 15 % with dose 1	84.40%	>99%	82.71%	82.38%	76.15%	82.41%	86.83%	88.92%	86.95%
12 to 15 % with dose 2	79.88%	>99%	79.02%	74.36%	71.14%	77.87%	82.55%	85.08%	80.48%

*National population will not equal sum of listed jurisdictions due to a small number of people counted in national population residing in some 'other' territories. Sum of state doses will not add to national total as some records are unable to be geocoded to a State or Territory. Doses sourced from Australian Immunisation Register, population from ABS ERP June 2020

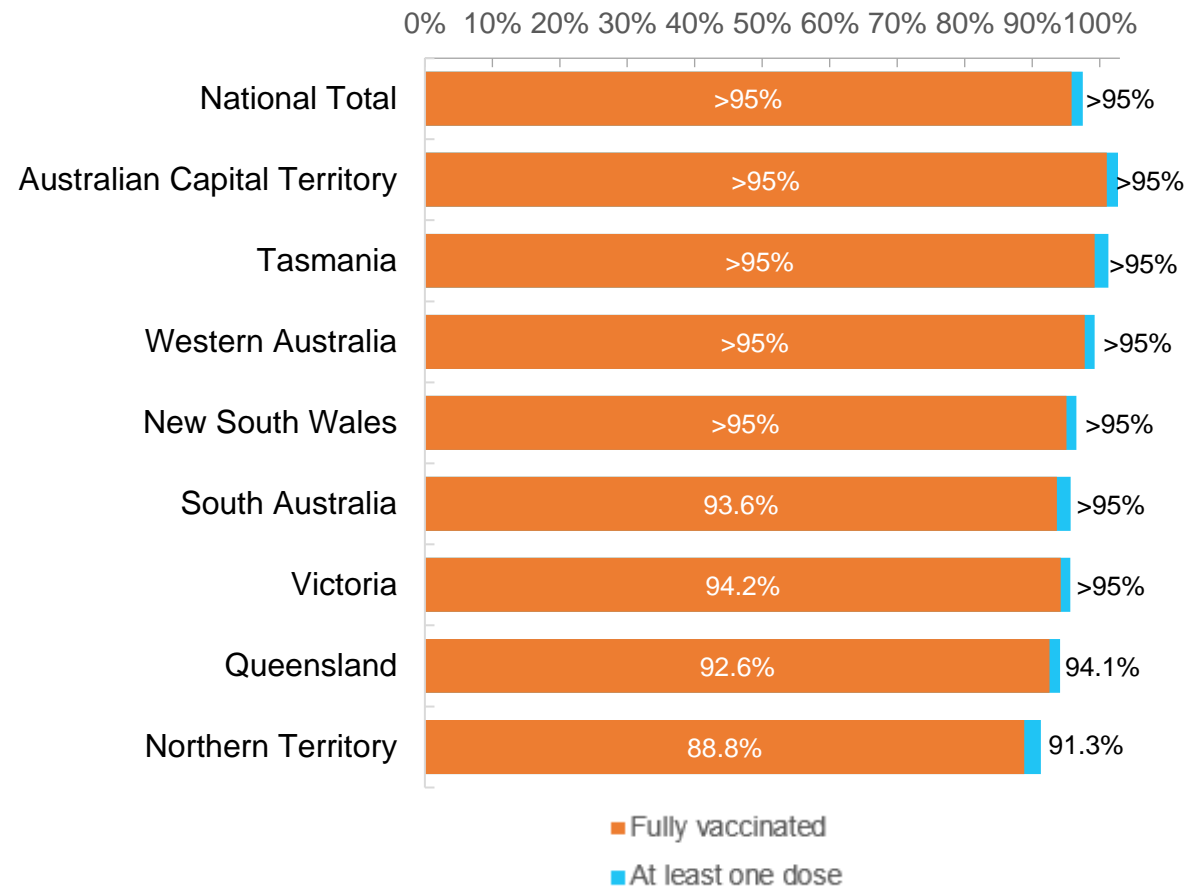
Data as at:
20 Jun 2022

Vaccinations by location

Cumulative total doses administered vs eligible state populations*



First and Second Doses by residential location



*Not an indication of percentage vaccinated, numbers will exceed 100 due to multiple doses required per person of the population. All doses are included for those aged 12 and above, and are based on vaccination provider location.

Aboriginal and Torres Strait Islander peoples

Number of people vaccinated

Data as at:
14 Jun 2022
Updated weekly

Australia's COVID-19
Vaccine Roadmap



443,032

people over the age of 16
have had at least one dose

85.0%

of people over the age of 16
have had at least one dose



424,557

people over the age of 16
are fully vaccinated

81.4%

of people over the age of 16 are
fully vaccinated



People aged 12 – 15 years

48,069

42,232

68.0%

At least one dose

59.8%

Fully vaccinated

178 Aboriginal community controlled health services (ACCHS)

0#	50	27	44	12	3	21	21
ACT	NSW	NT	QLD	SA	TAS	VIC	WA

Medicare Address State ^{##}	Individuals Dose 1	Individuals Dose 1 %	Individuals Dose 2	Individuals Dose 2 %
Australian Capital Territory	4,788	91.7%	4,668	89.4%
New South Wales	136,036	87.3%	132,973	85.4%
Northern Territory	41,436	89.7%	39,465	85.4%
Queensland	116,396	81.8%	111,007	78.0%
South Australia	20,072	80.5%	18,685	75.0%
Tasmania	13,908	88.8%	13,499	86.2%
Victoria	35,657	90.4%	34,887	88.5%
Western Australia	53,565	86.7%	49,846	80.7%
Unknown/Other Territories	21,174	70.2%	19,527	64.7%
Totals	443,032	85.0%	424,557	81.4%

Source: Australian Immunisation Register

*Identifying as Aboriginal and Torres Strait Islander is optional and the estimated population may be under reported.

**Includes all Aboriginal and Torres Strait Islander peoples who have received a vaccination, not limited to those administered in an ACCHS setting

#ACCHS in the ACT are currently operating as a Commonwealth Vaccine Clinics so not included to avoid double counting

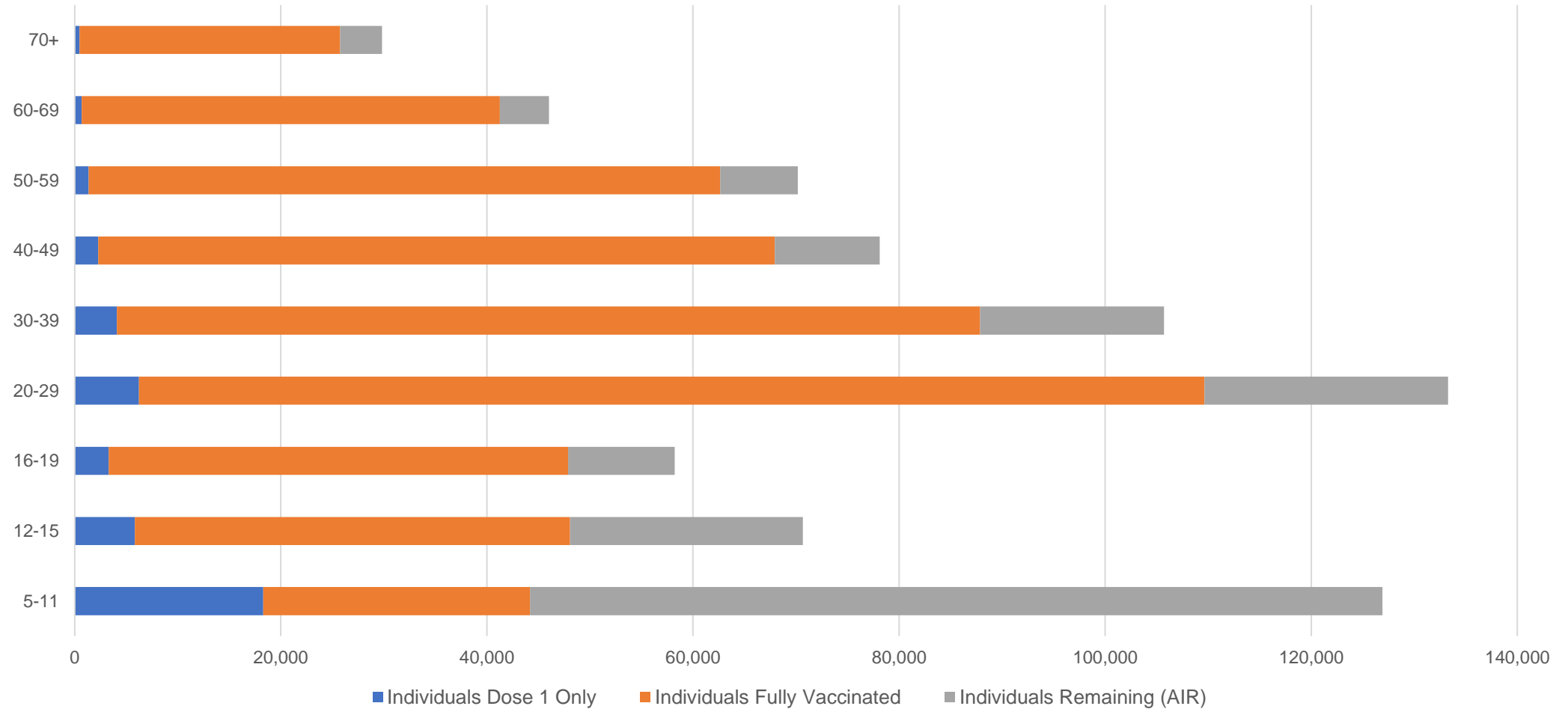
##The above table includes all identified Aboriginal and Torres Strait Islander people who are aged 16 and above by their state of residence.

Aboriginal and Torres Strait Islander peoples

Number of people vaccinated by age

Data as at:
14 Jun 2022
Updated weekly

Australia's COVID-19
Vaccine Roadmap



Source: Australian Immunisation Register

Commonwealth primary care

Data as at:
20 Jun 2022

Australia's COVID-19
Vaccine Roadmap



Primary care vaccine administration sites

5,709	128	178	3,614
GPs	CVCs	ACCHS	Pharmacies



37,391,761 total vaccine doses administered
primary care settings as at 20 June
+ 36,384 recorded in the last 24 hours

Primary care vaccinations by provider type

	Doses administered	Daily increase	7 day increase
General Practice* includes other Commonwealth	29,906,744	24,511	159,013
Pharmacy	7,485,017	11,873	68,063

NSW
12,894,530
(+12,558 daily increase)

VIC
9,282,910
(+8,612 daily increase)

QLD
7,196,691
(+7,093 daily increase)

WA
3,929,364
(+3,517 daily increase)

TAS
711,037
(+1,265 daily increase)

SA
2,246,466
(+2,931 daily increase)

ACT
590,930
(+575 daily increase)

NT
221,218
(+163 daily increase)

318,615

doses administered to persons residing in other territories or with missing residential information

*General practice includes Commonwealth Vaccination Clinics, Aboriginal Community Health Centres, Royal Flying Doctor Service and other Commonwealth vaccination facilities

Source: Australian Immunisation Register

Data as at:
20 Jun 2022

Commonwealth aged care and disability doses administered



1,313,169 (+ 537 last 24 hours)

Total vaccine doses administered in aged care and disability facilities as at 20 June

Number of doses administered as part of the Commonwealth aged and disability care rollout

NSW
571,108
(+113 daily increase)

VIC
247,026
(+146 daily increase)

QLD
208,863
(+136 daily increase)

WA
111,724
(+143 daily increase)

TAS
23,651
(<10 daily increase)

SA
86,227
(<10 daily increase)

ACT
17,882
(<10 daily increase)

NT
7,687
(<10 daily increase)

39,001

doses administered to persons residing in other territories or with missing residential information

Source: Australian Immunisation Register

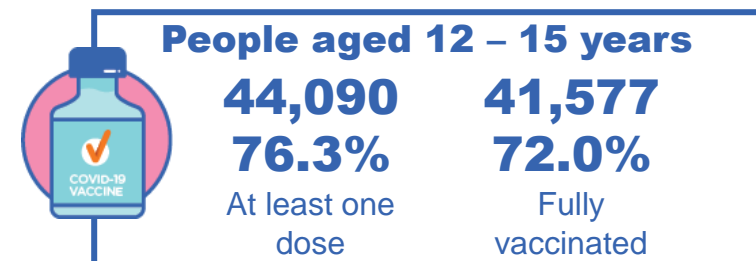
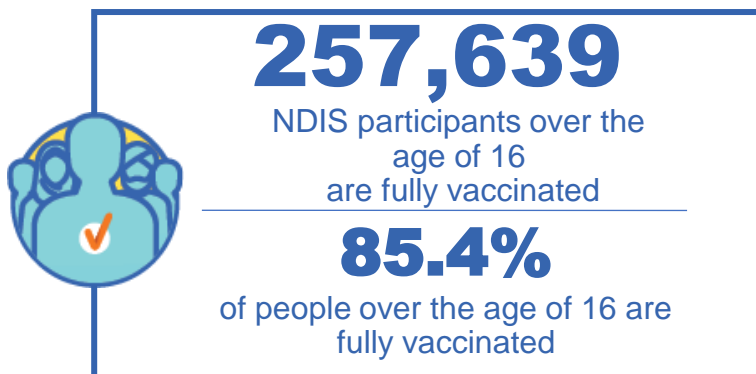
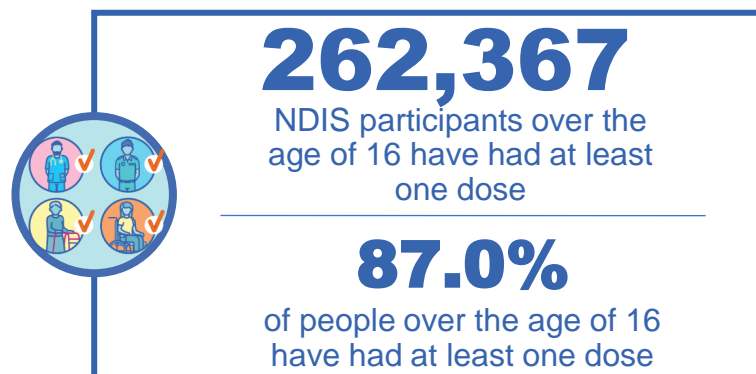
*Sourced from the Australian Immunisation Register. Includes all persons vaccinated at participating residential aged care, disability and related industry settings.

**State level breakdown indicates the residential location and may not align to the state in which the vaccination occurred.

National Disability Insurance Scheme (NDIS) reported vaccinations

Data as at:
16 June 2022
Updated weekly

Australia's COVID-19
Vaccine Roadmap



NDIS participant vaccinations

	People aged 16+ with at least one dose	People aged 16+ fully vaccinated	% People aged 16+ with at least one dose	% People aged 16+ fully vaccinated
ACT	4,940	4,877	89.0%	87.9%
NSW	80,332	79,051	87.5%	86.1%
NT	2,281	2,213	78.1%	75.8%
QLD	52,006	51,023	85.3%	83.7%
SA	21,490	20,986	84.8%	82.8%
TAS	6,558	6,403	87.3%	85.2%
VIC	69,685	68,523	88.1%	86.7%
WA	25,075	24,563	88.3%	86.5%
National	262,367	257,639	87.0%	85.4%

Source: Linkage between National Disability Insurance Agency data and the Australian Immunisation Register. Total NDIS participant numbers as at 30 May. Australian Immunisation Register data as at 15 June. Includes all participants regardless of residence type.

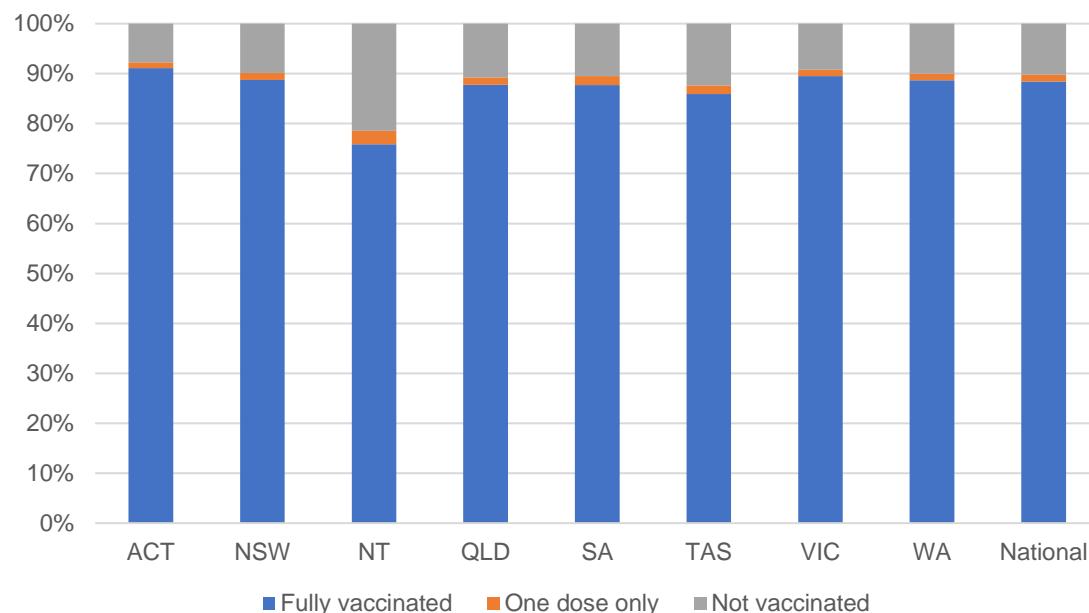
National Disability Insurance Scheme (NDIS) reported vaccinations

Data as at:
16 June 2022
Updated weekly

Australia's COVID-19
Vaccine Roadmap

NATIONAL	Total people with at least one dose	People fully vaccinated	Total number of individuals in cohort	% People with at least one dose	% People fully vaccinated
NDIS participants living in disability accommodation	21,116	20,787	23,469	90.0%	88.6%

NDIS participants in disability and aged care accommodation



Source: Linkage between National Disability Insurance Agency data and the Australian Immunisation Register. Includes participants residing in disability accommodation only.

Source: Total NDIS participant numbers as at 30 May. Participant data as at 14 June. Australian Immunisation Register data as at 15 June. Worker data as at 15 June.

NDIS workforce vaccinations

	NDIS workers with at least one dose	NDIS workers fully vaccinated	% NDIS workers with at least one dose	% NDIS workers fully vaccinated
NSW	127,155	121,812	98.2%	94.1%
VIC	117,930	114,648	98.4%	95.6%
QLD	71,443	70,577	97.8%	96.7%
WA	34,538	33,109	98.8%	94.7%
SA	35,963	33,926	98.6%	93.0%
TAS	10,800	10,584	99.5%	97.5%
ACT	12,340	12,313	99.8%	99.6%
NT	3,934	3,776	99.6%	95.6%
TOTAL	414,103	400,745	98.4%	95.2%

Source: the NDIS Commission has established a requirement for registered NDIS providers who provide intensive disability support services to report on the vaccination status of workers they employ, or otherwise engage, to deliver NDIS-funded supports and services, and who are required to be vaccinated in accordance with in-force state and territory public health orders. The statistics reflect data reported to the NDIS Commission by registered NDIS providers and should be considered indicative and subject to change

Note: Some registered NDIS providers are yet to report on the vaccination status of their workforce. The NDIS Commission is working with those providers around reporting requirements.

Remaining workers not included include those exempt from vaccination requirements, workers whose vaccination status is not yet verified by the provider (such as workers on leave) and provider reporting anomalies.

Residential aged care vaccination rollout

Data as at:
16 June 2022
Updated weekly

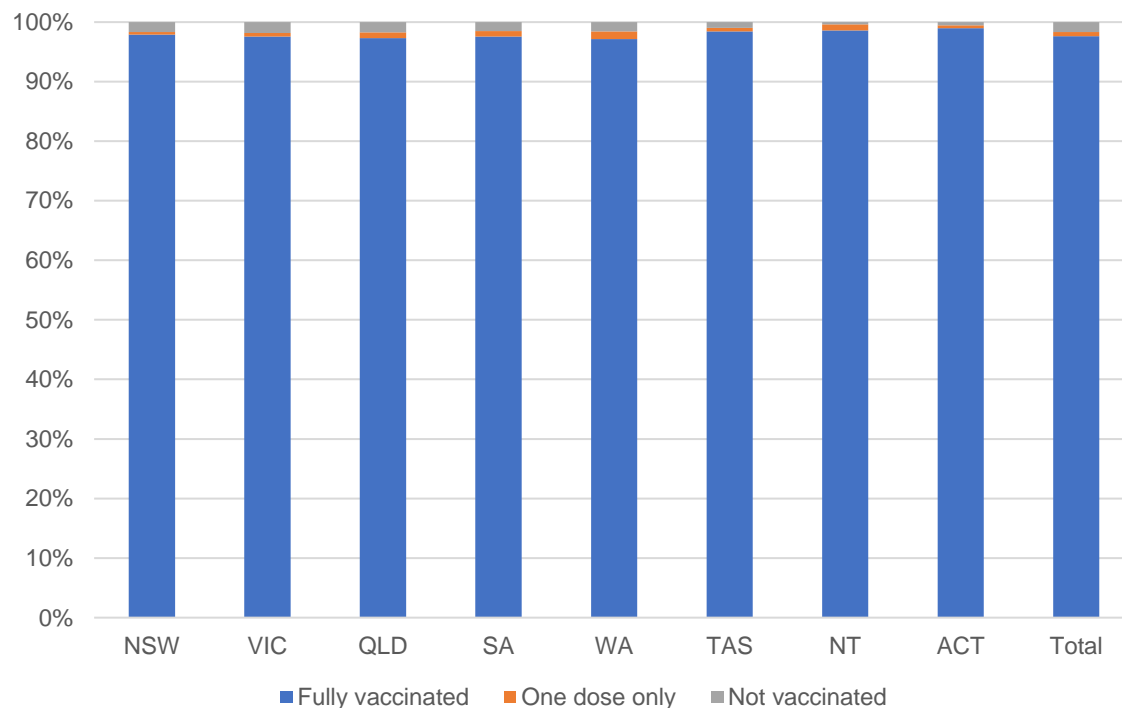
Residential aged care facilities status

176,781 **178,054**

People fully vaccinated

People with at least one dose

Aged care resident vaccinations



Aged care worker vaccinations

Jurisdictions	Total workers with at least one dose	Workers fully vaccinated	% Workers with at least one dose	% Workers fully vaccinated
NSW	77,698	77,685	99.9%	99.8%
VIC	70,768	70,765	99.5%	99.5%
QLD	48,221	48,216	99.6%	99.6%
SA	27,347	27,337	100.0%	100.0%
WA	24,532	24,527	100.0%	100.0%
TAS	7,647	7,646	100.0%	100.0%
NT	939	939	100.0%	100.0%
ACT	2,920	2,920	100.0%	100.0%
Total	260,072	260,035	99.8%	99.7%

Source: Residential aged care provider self-reported COVID-19 vaccination information

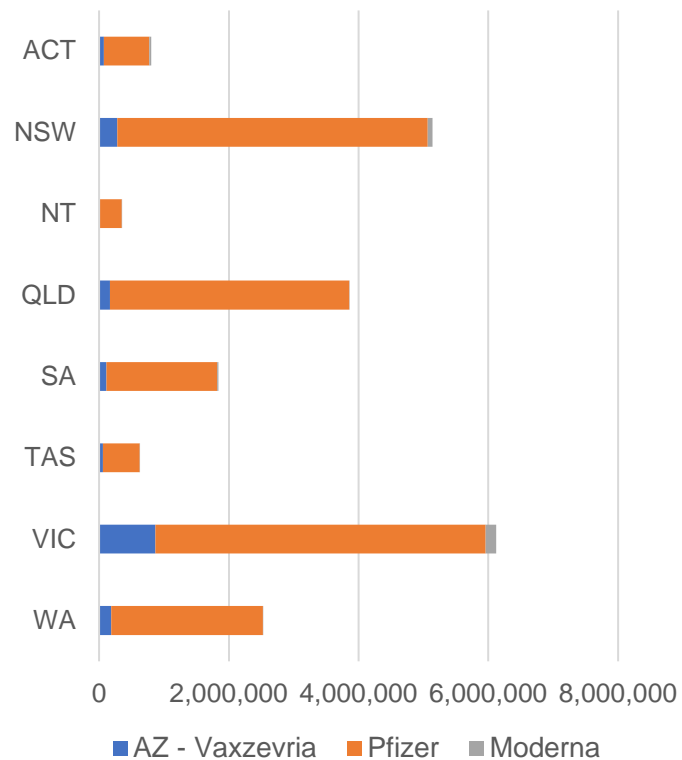
*Status updates are provided by facilities at least once per week. Reporting is updated Monday to Friday to encompass different facility updates being made on different days.

Data is sourced directly from Aged Care Service Providers and is not drawn or closely aligned with data from AIR due to inconsistencies and potential lags in uploading of records.

Data as at:
20 Jun 2022

Jurisdiction administered

Total vaccine doses administered in State and Territory clinics as at 20 June



21,273,525 total vaccine doses administered in State and Territory clinics as at 20 June
 + **3,475** recorded in the last 24 hours
 + **25,040** recorded in the last 7 days

NSW
5,138,753
 (+477 daily increase)

VIC
6,125,979
 (+872 daily increase)

QLD
3,859,934
 (+213 daily increase)

WA
2,528,640
 (+484 daily increase)

TAS
627,705
 (+64 daily increase)

SA
1,841,079
 (+715 daily increase)

ACT
804,506
 (+588 daily increase)

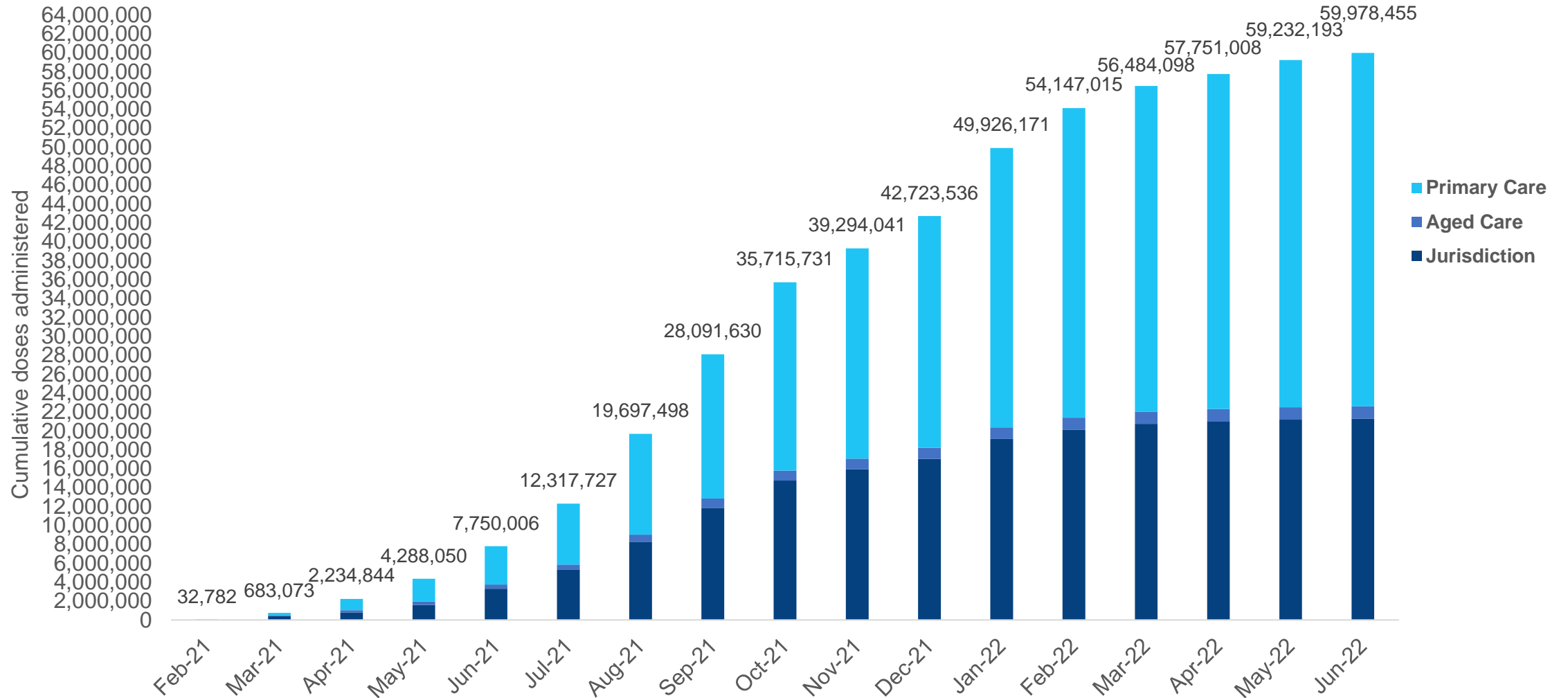
NT
346,929
 (+62 daily increase)

*Sourced from the Australian Immunisation Register. Numbers are calculated as difference in daily cumulative reported numbers to allow for historical corrections.

Source: Australian Immunisation Register

Cumulative doses administered by channel

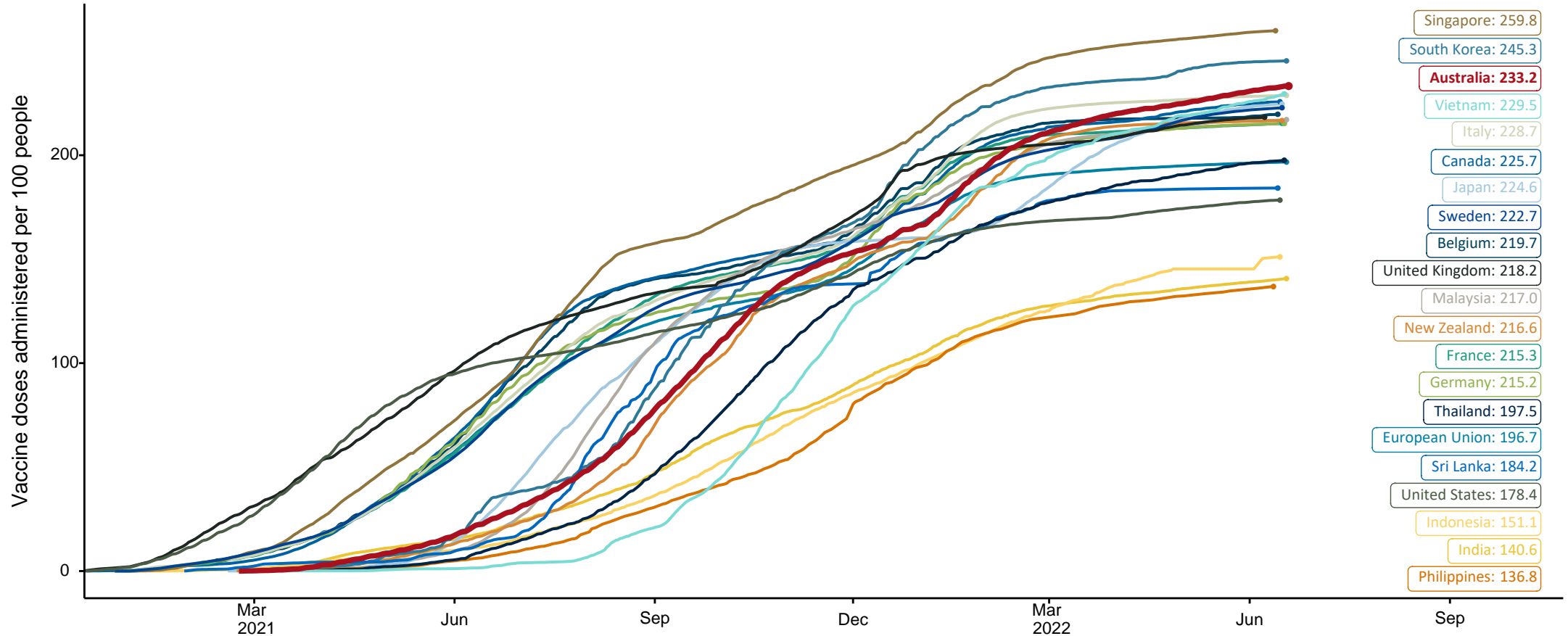
Data as at:
20 Jun 2022



Source: Australian Immunisation Register

COVID-19 vaccine doses per 100, Australia and select countries

Data as at:
19 June 2022
Updated weekly

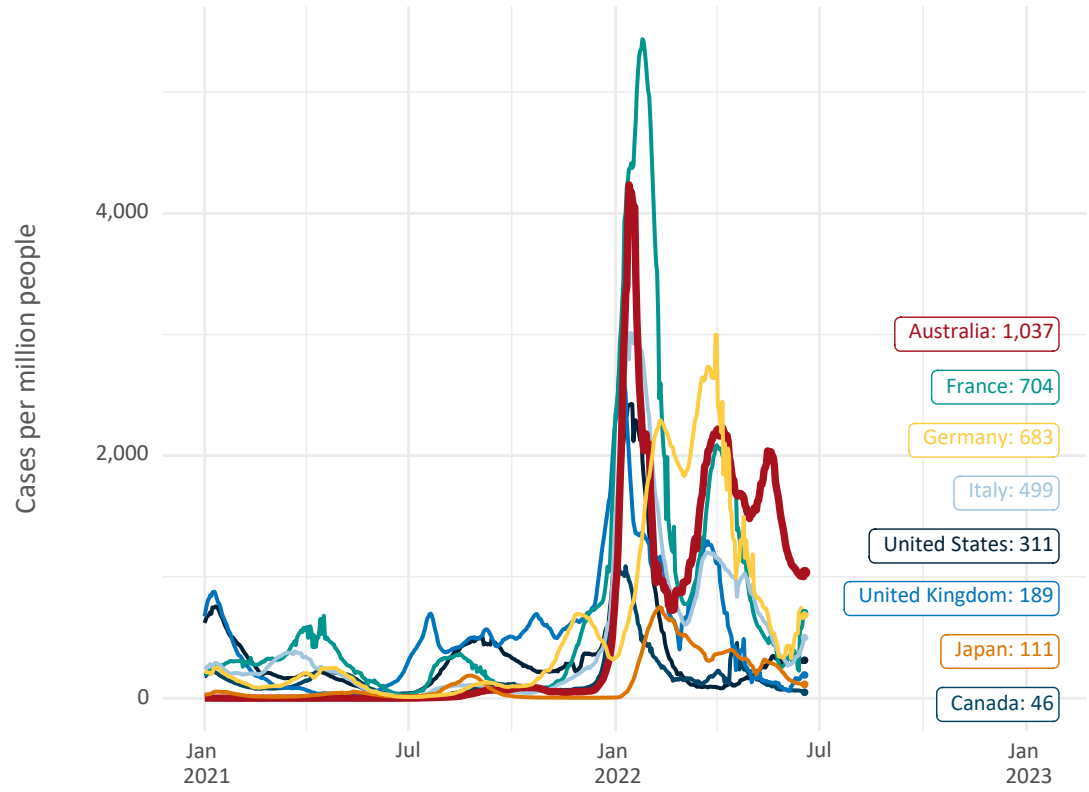


Note: From 11 January 2022, data for Australia includes all doses administered to people 5 and over. Prior to 11 January, data was for 12 and over.
Source: Department of Health (Australia), Our World in Data (international)
Latest data: 19 June

Data as at:
19 June 2022
Updated weekly

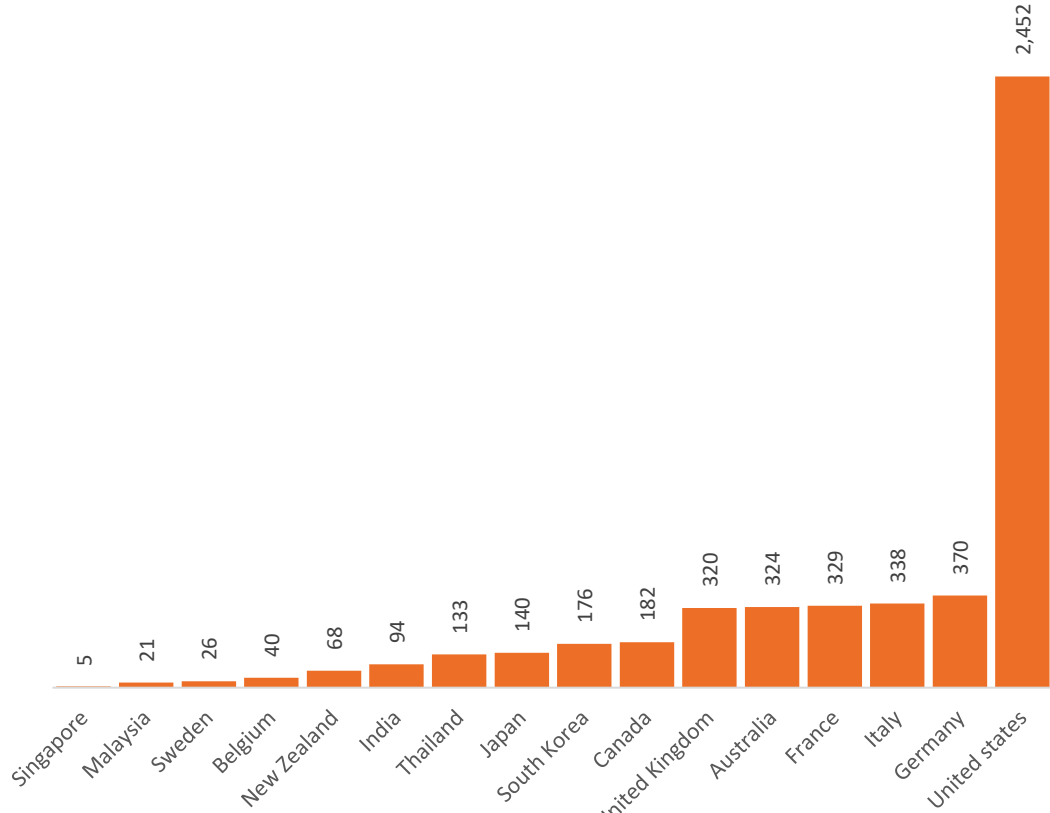
International data – COVID-19

New daily cases per million since 2021, Australia and G7 countries
Smoothed - 7 day average



Source: OWID
Data downloaded: 20 Jun 2022 09:21
Latest data: 18 Jun 2022

COVID-19 deaths in past 7 days - Australia and select countries



Source: OWID
Data downloaded: 20 Jun 2022 09:21
Latest data: 18 Jun 2022