



Australian Government
Operation COVID Shield

COVID-19 Vaccine Roll-out

20 June 2022

Data as at:
19 Jun 2022

Total vaccine doses



59,938,059 total vaccine
doses administered nationally as at 19 June
+5,279 recorded in the last 24 hours



20,096,591

people have had at least one
dose

>95%

of people over the age of 16
have had at least one dose



19,760,983

people are fully vaccinated

>95%

of people over the age of 16 are
fully vaccinated



13,824,872

people over the age of 16
who have received three or
more doses

NSW
18,590,862
(+1,796 daily
increase)

VIC
15,730,653
(+1,238 daily
increase)

QLD
11,334,186
(+807 daily
increase)

WA
6,594,405
(+596 daily
increase)

TAS
1,358,521
(+167 daily
increase)

SA
4,165,836
(+549 daily
increase)

ACT
1,570,087
(+117 daily
increase)

NT
593,509
(**<10** daily
increase)

*Administration state breakdown indicates state in which a vaccine was administered

**Overall dose count includes instances of more than three doses per person in a small number of cases.

Source: Australian Immunisation Register

Booster Vaccinations

Australia's COVID-19
Vaccine Roadmap

Data as at:
19 Jun 2022



224,192

Indigenous people who have
received three or more doses

53.8%

of eligible population (417,084)



166,806

Aged Care Residents who have
received three or more doses##

94.4%

of eligible population (176,781)



191,466

NDIS participants

who have received three or more doses#

74.8%

of eligible population
(255,000)

22,009

NDIS residents

89.4%

of eligible population
(24,000)



13,824,872

total people who have
received three or more doses

+1,405 daily increase

70.3% of eligible population (19,663,212)

	Number of People	Daily Increase	% of Eligible
NSW	4,217,609	504	67.8%
VIC	3,687,935	345	72.6%
QLD	2,394,529	268	63.3%
WA	1,697,605	104	82.9%
SA	987,507	167	73.8%
TAS	316,077	30	72.8%
ACT	273,169	25	78.8%
NT	131,032	<10	78.0%

*People may belong to multiple groups and could be represented in the above breakdowns multiple times.

NDIS participants data as at 14 June 2022.

Aged Care Residents data as at 17 June 2022.

Source: Australian Immunisation Register

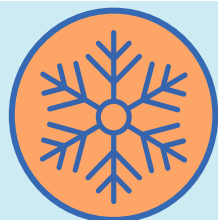
119,409

doses administered to persons
residing in other territories or with
missing residential information

Winter / Fourth Doses

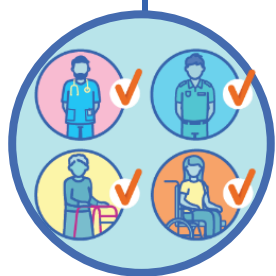
Data as at:
19 Jun 2022

Australia's COVID-19
Vaccine Roadmap



2,087,720 total people (16+) who have received four or more doses

+2,848 daily increase



1,848,866

People aged 65+ who have
received four or more doses

54.4%

of eligible population (3,400,806)

	Number of People 16+	Daily Increase
ACT	41,163	34
NSW	673,767	917
NT	9,053	<10
QLD	396,723	471
SA	168,396	270
TAS	58,074	104
VIC	523,873	650
WA	206,493	390

10,178

doses administered to persons
residing in other territories or with
missing residential information

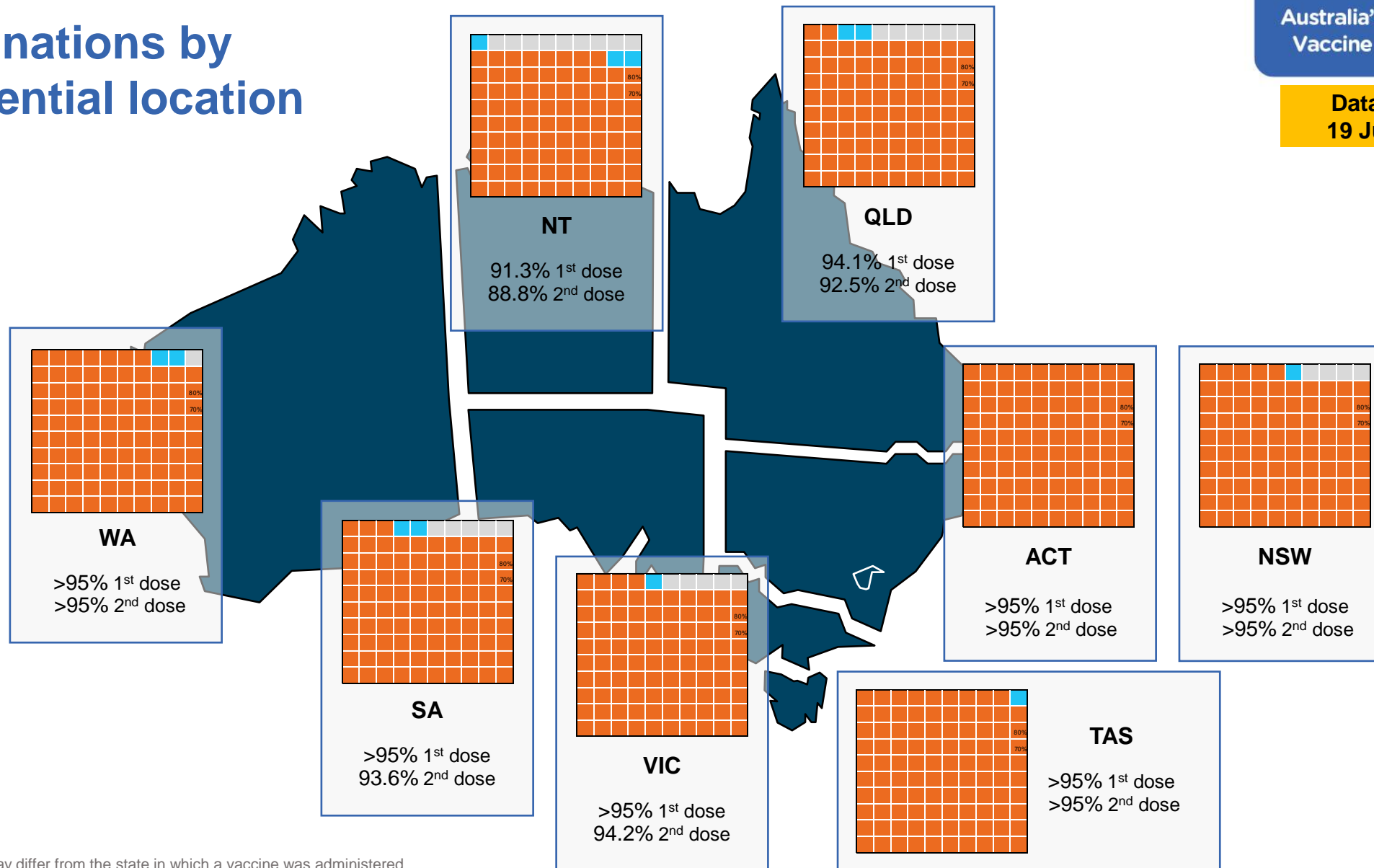
*People become eligible for a winter booster four months after their third dose.

Source: Australian Immunisation Register

Vaccinations by residential location

Australia's COVID-19
Vaccine Roadmap

Data as at:
19 Jun 2022



*Residential state may differ from the state in which a vaccine was administered

Commonwealth and Jurisdiction vaccine doses administered

Data as at:
19 Jun 2022



59,938,059 total vaccine
doses administered nationally as at 19 June

+ 5,279 recorded in the last 24 hours

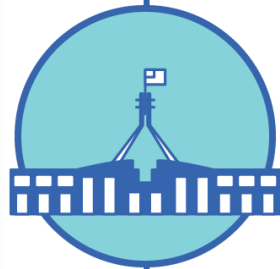


21,270,050

doses administered by state
and territory facilities

+ 1,324

recorded in the last 24 hours



38,668,009

doses administered by
commonwealth facilities

+ 3,955

recorded in the last 24 hours

37,355,377 total vaccine doses
administered in primary care settings

1,312,632 total vaccine doses
administered in aged care and disability
settings

NSW	Jurisdictions	Commonwealth
Cumulative	5,138,276	13,452,586
Daily increase	366	1,430

VIC	Jurisdictions	Commonwealth
Cumulative	6,125,107	9,605,546
Daily increase	246	992

QLD	Jurisdictions	Commonwealth
Cumulative	3,859,721	7,474,465
Daily increase	68	739

WA	Jurisdictions	Commonwealth
Cumulative	2,528,156	4,066,249
Daily increase	159	437

TAS	Jurisdictions	Commonwealth
Cumulative	627,641	730,880
Daily increase	135	32

SA	Jurisdictions	Commonwealth
Cumulative	1,840,364	2,325,472
Daily increase	291	258

ACT	Jurisdictions	Commonwealth
Cumulative	803,918	766,169
Daily increase	54	63

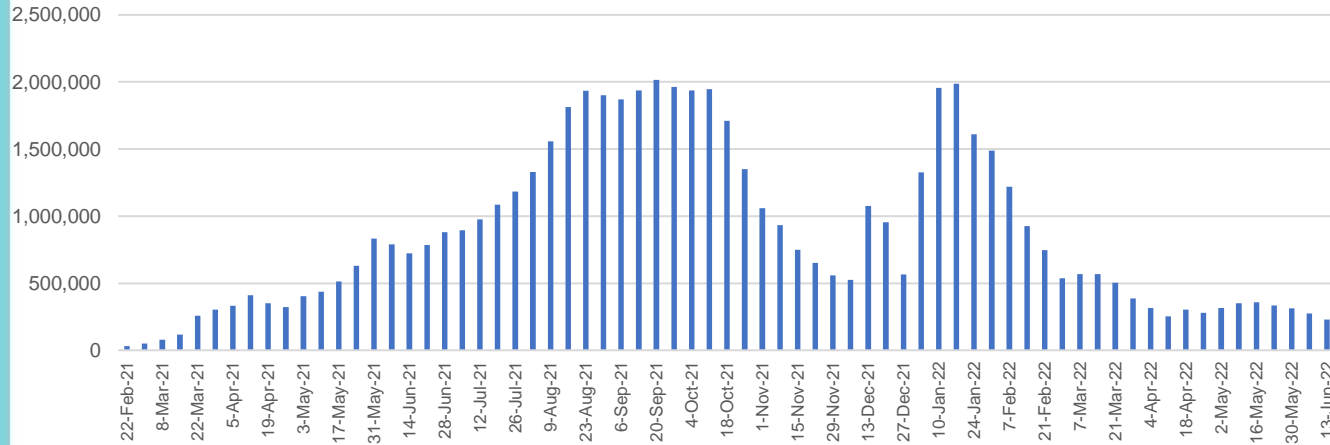
NT	Jurisdictions	Commonwealth
Cumulative	346,867	246,642
Daily increase	<10	<10

Vaccine milestone charts

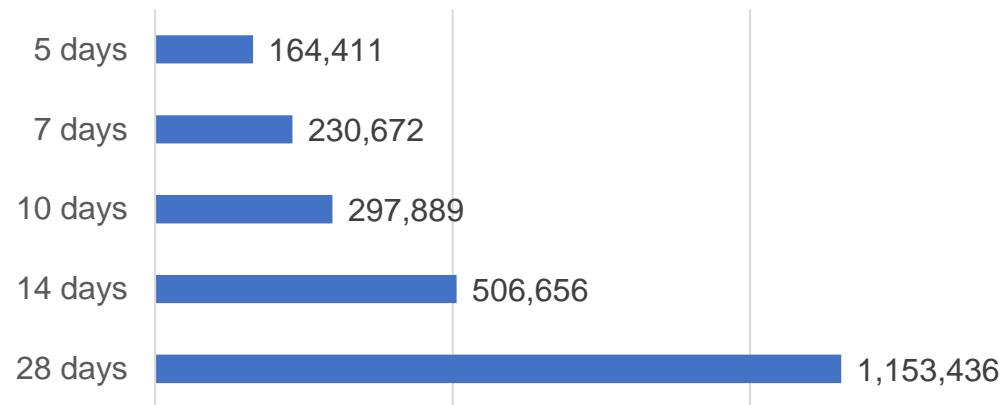
Data as at:
19 Jun 2022

Australia's COVID-19
Vaccine Roadmap

Doses Administered by Week

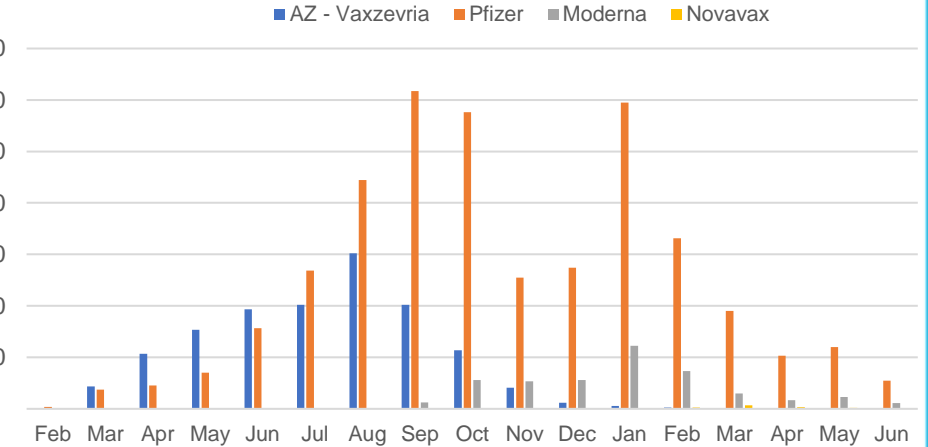


Doses Reported

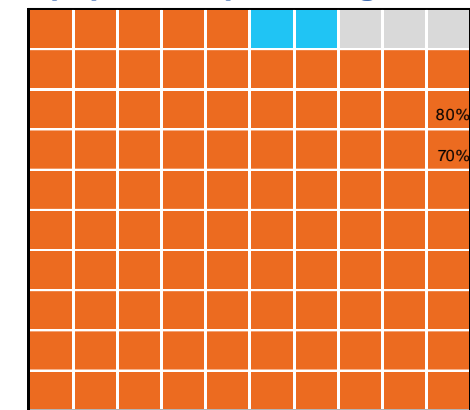


*Sourced from the Australian Immunisation Register.

Doses by administration month and vaccine type



Eligible population percentage coverage



1st dose: > 95.0% 2nd dose: > 95.0%

*Each square represents 1% of the national population.
Squares are filled as milestones are achieved.

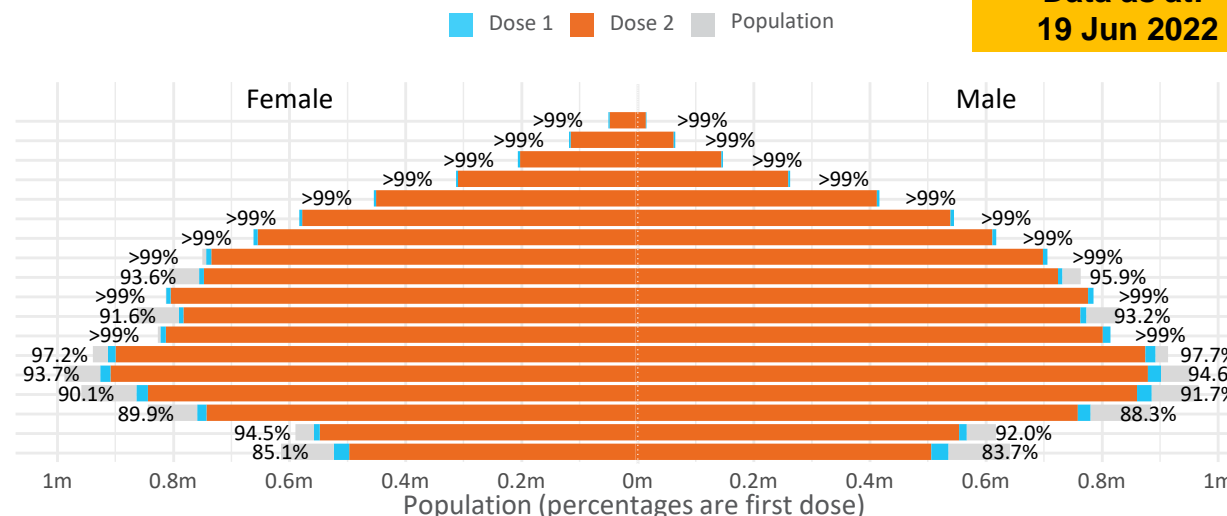
Doses by age and sex

First and second doses by age and sex

Australia's COVID-19
Vaccine Roadmap

Data as at:
19 Jun 2022

Age	Dose 1	Dose 2
95+	65,223 (>99%)	61,783 (>99%)
90-94	181,477 (>99%)	175,980 (>99%)
85-89	350,383 (>99%)	343,602 (>99%)
80-84	571,191 (>99%)	564,031 (>99%)
75-79	863,748 (>99%)	855,325 (>99%)
70-74	1,118,852 (>99%)	1,107,547 (>99%)
65-69	1,269,898 (>99%)	1,255,217 (>99%)
60-64	1,437,514 (>99%)	1,421,130 (98.9%)
55-59	1,475,531 (94.9%)	1,458,851 (93.8%)
50-54	1,584,008 (>99%)	1,567,048 (>99%)
45-49	1,550,838 (92.5%)	1,532,472 (91.4%)
40-44	1,624,682 (>99%)	1,600,664 (98.8%)
35-39	1,793,408 (97.7%)	1,761,214 (96.0%)
30-34	1,819,004 (94.6%)	1,777,087 (92.4%)
25-29	1,743,729 (91.5%)	1,695,963 (89.0%)
20-24	1,531,705 (89.5%)	1,491,640 (87.1%)
16-19	1,115,400 (93.3%)	1,091,429 (91.3%)
12-15	1,050,010 (84.4%)	993,893 (79.9%)



	AUS	ACT	NSW	NT	QLD	SA	TAS	VIC	WA
16 and over - dose 1	20,096,591	353,217	6,338,418	173,916	3,869,835	1,377,877	445,736	5,171,408	2,098,840
16 and over - dose 2	19,760,983	347,503	6,240,694	169,250	3,806,119	1,348,623	436,744	5,093,308	2,067,752
16 and over - population	20,619,959*	344,037	6,565,651	190,571	4,112,707	1,440,400	440,172	5,407,574	2,114,978
16 and over % with dose 1	97.46%	>99%	96.54%	91.26%	94.09%	95.66%	>99%	95.63%	>99%
16 and over % with dose 2	95.83%	>99%	95.05%	88.81%	92.55%	93.63%	>99%	94.19%	97.77%
5 to 11 - dose 1	1,193,311	31,808	356,345	13,165	206,651	83,760	28,482	324,875	140,496
5 to 11 - dose 2	894,942	27,222	273,289	8,738	149,017	62,917	23,008	244,558	101,539
5 to 11 - population	2,276,638	39,789	716,460	24,750	478,731	148,816	45,033	578,499	244,154
5 to 11 % with dose 1	52.42%	79.94%	49.74%	53.19%	43.17%	56.28%	63.25%	56.16%	57.54%
5 to 11 % with dose 2	39.31%	68.42%	38.14%	35.31%	31.13%	42.28%	51.09%	42.27%	41.59%
12 to 15 - dose 1	1,050,010	20,100	322,875	10,757	205,733	68,200	22,849	274,446	115,538
12 to 15 - dose 2	993,893	19,557	308,444	9,707	192,200	64,447	21,722	262,599	106,945
12 to 15 - population	1,243,990	19,693	390,330	13,060	270,146	82,747	26,308	308,611	132,869
12 to 15 % with dose 1	84.41%	>99%	82.72%	82.37%	76.16%	82.42%	86.85%	88.93%	86.96%
12 to 15 % with dose 2	79.90%	>99%	79.02%	74.33%	71.15%	77.88%	82.57%	85.09%	80.49%

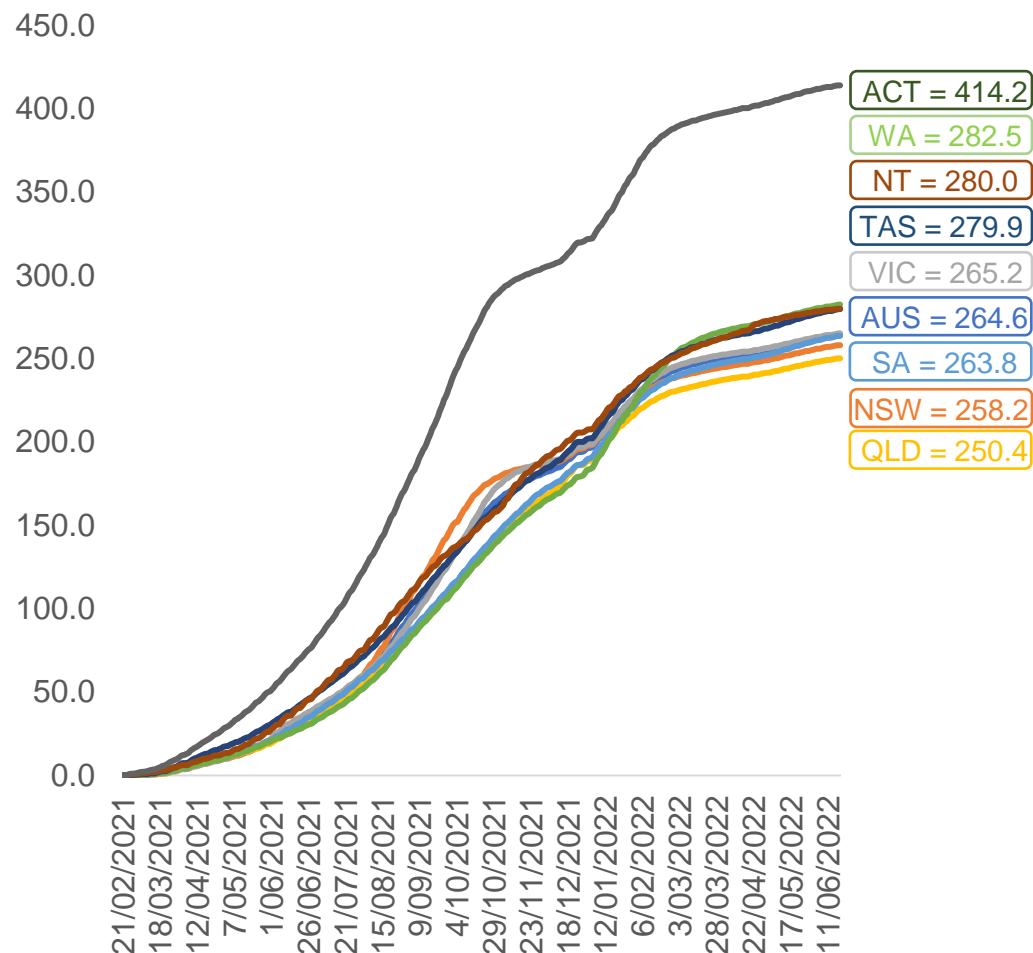
*National population will not equal sum of listed jurisdictions due to a small number of people counted in national population residing in some 'other' territories. Sum of state doses will not add to national total as some records are unable to be geocoded to a State or Territory.
Doses sourced from Australian Immunisation Register, population from ABS ERP June 2020

Vaccinations by location

Data as at:
19 Jun 2022

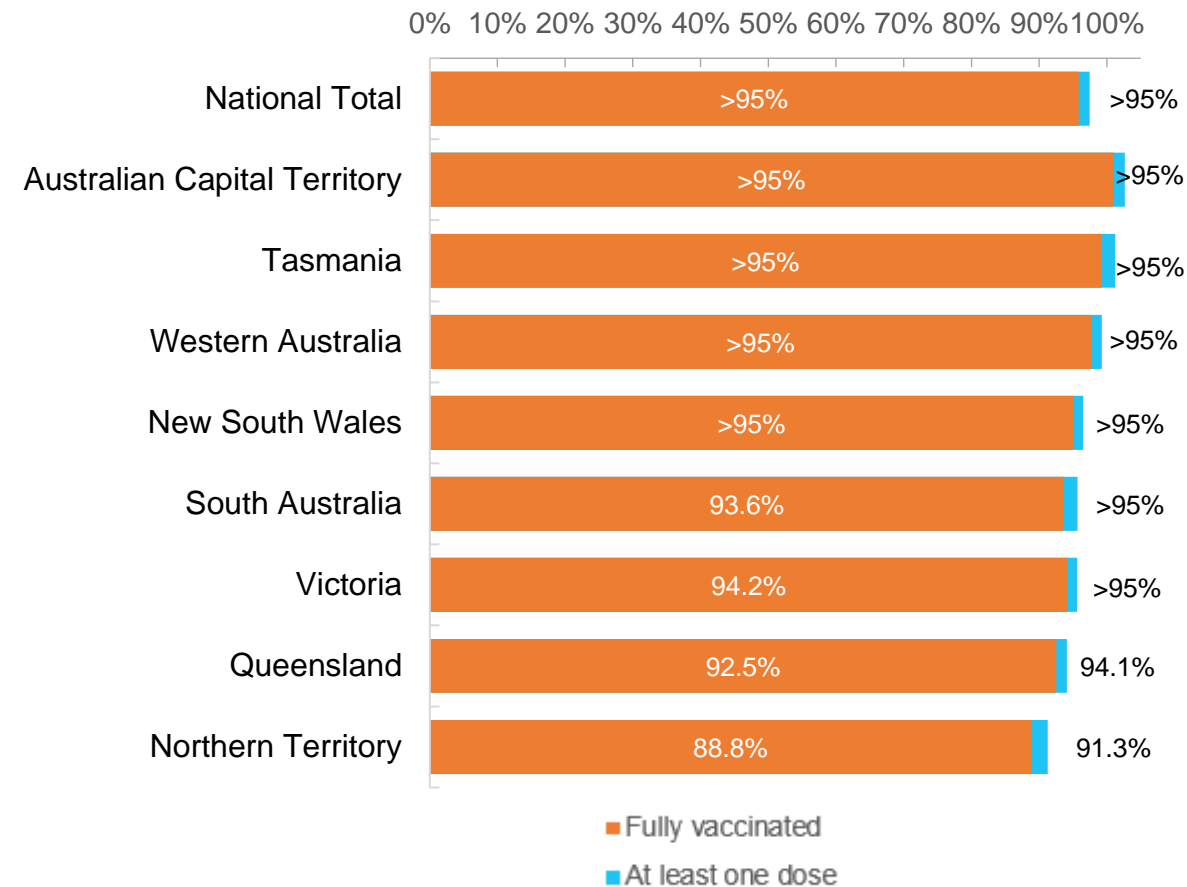
Australia's COVID-19
Vaccine Roadmap

Cumulative total doses administered vs eligible state populations*



*Not an indication of percentage vaccinated, numbers will exceed 100 due to multiple doses required per person of the population.
All doses are included for those aged 12 and above, and are based on vaccination provider location.

First and Second Doses by residential location



Aboriginal and Torres Strait Islander peoples

Number of people vaccinated

Data as at:
14 Jun 2022
Updated weekly

Australia's COVID-19
Vaccine Roadmap



443,032

people over the age of 16
have had at least one dose

85.0%

of people over the age of 16
have had at least one dose



424,557

people over the age of 16
are fully vaccinated

81.4%

of people over the age of 16 are
fully vaccinated



People aged 12 – 15 years

48,069

42,232

68.0%

At least one dose

59.8%

Fully vaccinated

178 Aboriginal community controlled health services (ACCHS)

0#

50

27

44

12

3

21

21

ACT

NSW

NT

QLD

SA

TAS

VIC

WA

Medicare Address State ^{##}	Individuals Dose 1	Individuals Dose 1 %	Individuals Dose 2	Individuals Dose 2 %
Australian Capital Territory	4,788	91.7%	4,668	89.4%
New South Wales	136,036	87.3%	132,973	85.4%
Northern Territory	41,436	89.7%	39,465	85.4%
Queensland	116,396	81.8%	111,007	78.0%
South Australia	20,072	80.5%	18,685	75.0%
Tasmania	13,908	88.8%	13,499	86.2%
Victoria	35,657	90.4%	34,887	88.5%
Western Australia	53,565	86.7%	49,846	80.7%
Unknown/Other Territories	21,174	70.2%	19,527	64.7%
Totals	443,032	85.0%	424,557	81.4%

Source: Australian Immunisation Register

*Identifying as Aboriginal and Torres Strait Islander is optional and the estimated population may be under reported.

**Includes all Aboriginal and Torres Strait Islander peoples who have received a vaccination, not limited to those administered in an ACCHS setting

#ACCHS in the ACT are currently operating as a Commonwealth Vaccine Clinics so not included to avoid double counting

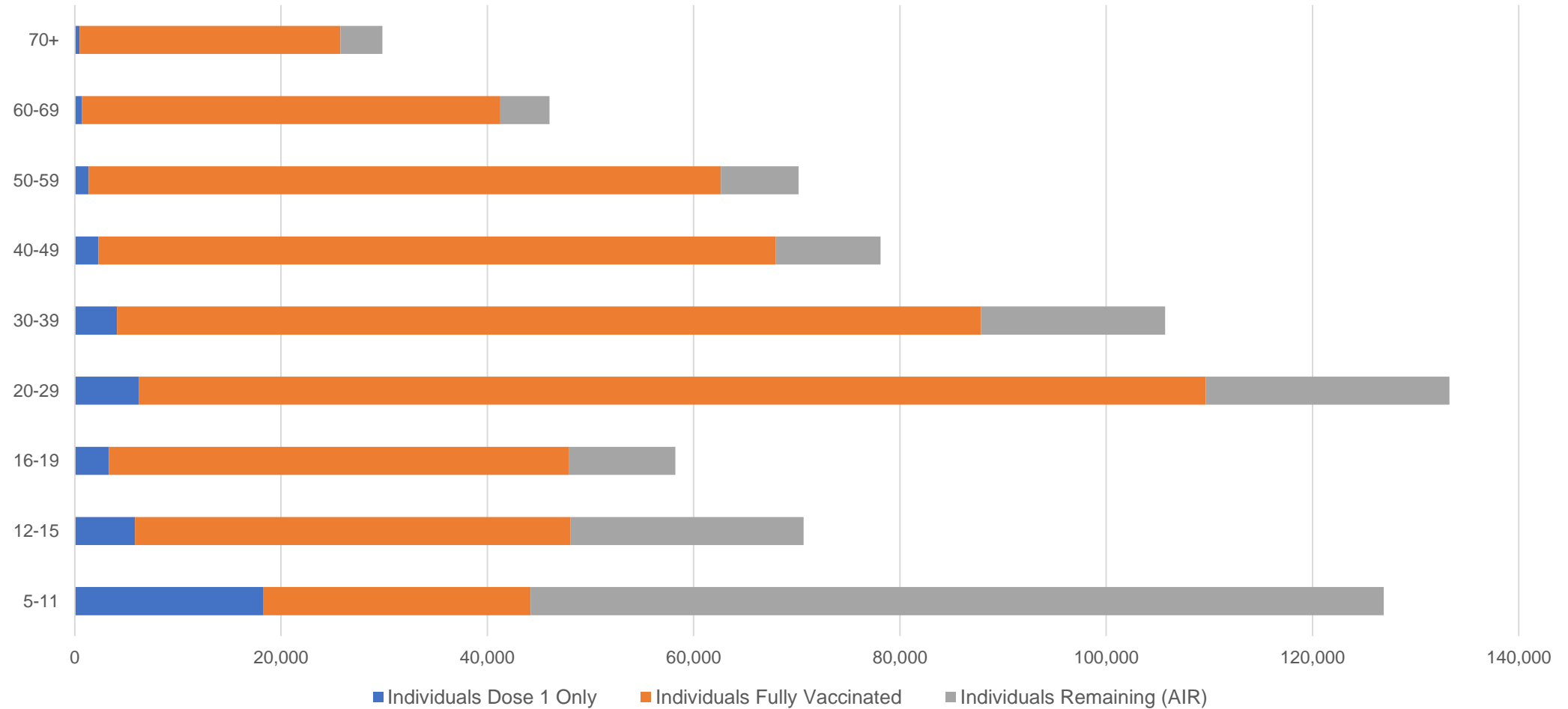
##The above table includes all identified Aboriginal and Torres Strait Islander people who are aged 16 and above by their state of residence.

Aboriginal and Torres Strait Islander peoples

Number of people vaccinated by age

Data as at:
14 Jun 2022
Updated weekly

Australia's COVID-19
Vaccine Roadmap



Source: Australian Immunisation Register

Commonwealth primary care

Data as at:
19 Jun 2022

Australia's COVID-19
Vaccine Roadmap



Primary care vaccine administration sites

5,708	128	178	3,610
GPs	CVCs	ACCHS	Pharmacies



37,355,377 total vaccine doses administered
primary care settings as at 19 June
+ 3,955 recorded in the last 24 hours

Primary care vaccinations by provider type

	Doses administered	Daily increase	7 day increase
General Practice* includes other Commonwealth	29,882,233	2,675	143,460
Pharmacy	7,473,144	1,280	60,530

NSW
12,881,972
(+1,476 daily increase)

VIC
9,274,298
(+1,009 daily increase)

QLD
7,189,598
(+748 daily increase)

WA
3,925,847
(+408 daily increase)

TAS
709,772
(+34 daily increase)

SA
2,243,535
(+265 daily increase)

ACT
590,355
(+69 daily increase)

NT
221,055
(<10 daily increase)

318,945

doses administered to persons
residing in other territories or with
missing residential information

*General practice includes Commonwealth Vaccination Clinics, Aboriginal Community Health Centres, Royal Flying Doctor Service and other Commonwealth vaccination facilities

Source: Australian Immunisation Register

Data as at:
19 Jun 2022

Commonwealth aged care and disability doses administered



1,312,632 (<10 last 24 hours)

Total vaccine doses administered in aged care and disability facilities as at 19 June

Number of doses administered as part of the Commonwealth aged and disability care rollout

NSW
570,995
(<10 daily increase)

VIC
246,880
(+12 daily increase)

QLD
208,727
(<10 daily increase)

WA
111,581
(<10 daily increase)

TAS
23,647
(<10 daily increase)

SA
86,226
(<10 daily increase)

ACT
17,890
(<10 daily increase)

NT
7,679
(<10 daily increase)

39,007

doses administered to persons
residing in other territories or with
missing residential information

*Sourced from the Australian Immunisation Register. Includes all persons vaccinated at participating residential aged care, disability and related industry settings.

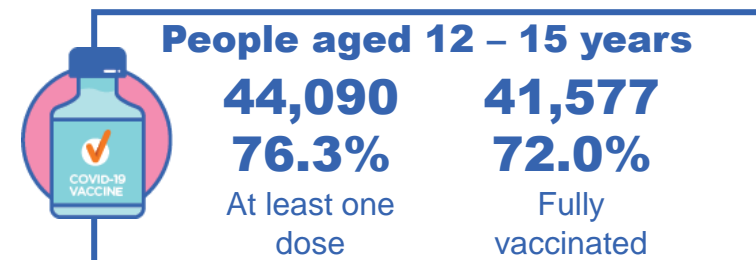
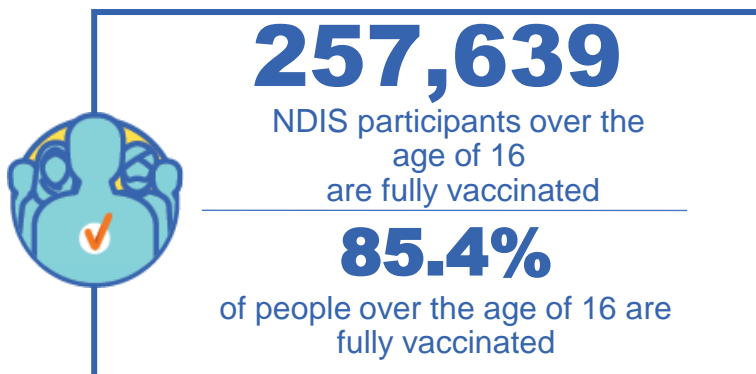
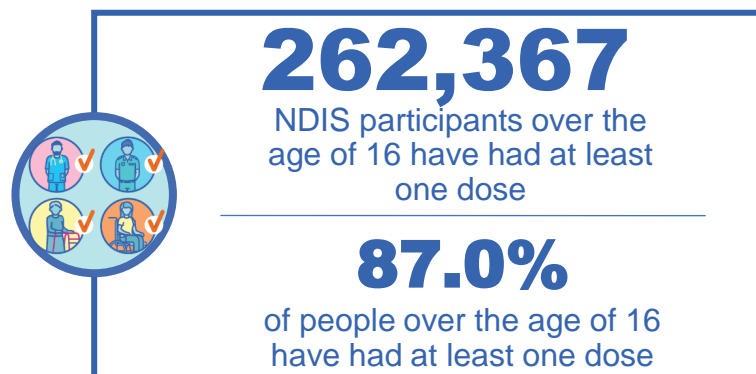
**State level breakdown indicates the residential location and may not align to the state in which the vaccination occurred.

Source: Australian Immunisation Register

National Disability Insurance Scheme (NDIS) reported vaccinations

Data as at:
16 June 2022
Updated weekly

Australia's COVID-19
Vaccine Roadmap



NDIS participant vaccinations

	People aged 16+ with at least one dose	People aged 16+ fully vaccinated	% People aged 16+ with at least one dose	% People aged 16+ fully vaccinated
ACT	4,940	4,877	89.0%	87.9%
NSW	80,332	79,051	87.5%	86.1%
NT	2,281	2,213	78.1%	75.8%
QLD	52,006	51,023	85.3%	83.7%
SA	21,490	20,986	84.8%	82.8%
TAS	6,558	6,403	87.3%	85.2%
VIC	69,685	68,523	88.1%	86.7%
WA	25,075	24,563	88.3%	86.5%
National	262,367	257,639	87.0%	85.4%

Source: Linkage between National Disability Insurance Agency data and the Australian Immunisation Register. Total NDIS participant numbers as at 30 May. Australian Immunisation Register data as at 15 June. Includes all participants regardless of residence type.

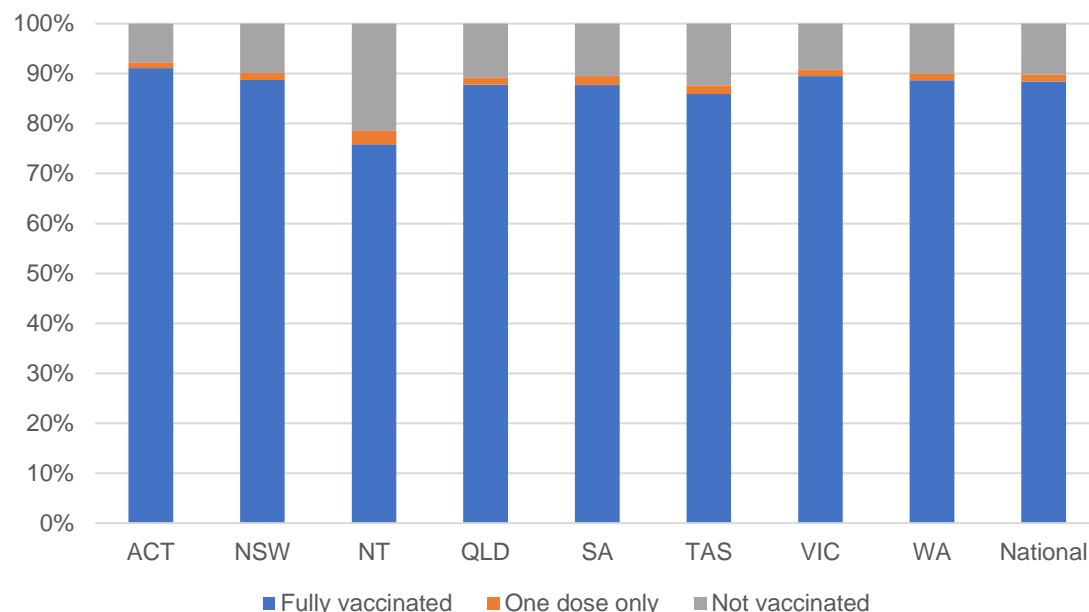
National Disability Insurance Scheme (NDIS) reported vaccinations

Data as at:
16 June 2022
Updated weekly

Australia's COVID-19
Vaccine Roadmap

NATIONAL	Total people with at least one dose	People fully vaccinated	Total number of individuals in cohort	% People with at least one dose	% People fully vaccinated
NDIS participants living in disability accommodation	21,116	20,787	23,469	90.0%	88.6%

NDIS participants in disability and aged care accommodation



Source: Linkage between National Disability Insurance Agency data and the Australian Immunisation Register. Includes participants residing in disability accommodation only.

Source: Total NDIS participant numbers as at 30 May. Participant data as at 14 June. Australian Immunisation Register data as at 15 June. Worker data as at 15 June.

NDIS workforce vaccinations

	NDIS workers with at least one dose	NDIS workers fully vaccinated	% NDIS workers with at least one dose	% NDIS workers fully vaccinated
NSW	127,155	121,812	98.2%	94.1%
VIC	117,930	114,648	98.4%	95.6%
QLD	71,443	70,577	97.8%	96.7%
WA	34,538	33,109	98.8%	94.7%
SA	35,963	33,926	98.6%	93.0%
TAS	10,800	10,584	99.5%	97.5%
ACT	12,340	12,313	99.8%	99.6%
NT	3,934	3,776	99.6%	95.6%
TOTAL	414,103	400,745	98.4%	95.2%

Source: the NDIS Commission has established a requirement for registered NDIS providers who provide intensive disability support services to report on the vaccination status of workers they employ, or otherwise engage, to deliver NDIS-funded supports and services, and who are required to be vaccinated in accordance with in-force state and territory public health orders. The statistics reflect data reported to the NDIS Commission by registered NDIS providers and should be considered indicative and subject to change

Note: Some registered NDIS providers are yet to report on the vaccination status of their workforce. The NDIS Commission is working with those providers around reporting requirements.

Remaining workers not included include those exempt from vaccination requirements, workers whose vaccination status is not yet verified by the provider (such as workers on leave) and provider reporting anomalies.

Residential aged care vaccination rollout

Residential aged care facilities status

176,781

People fully vaccinated

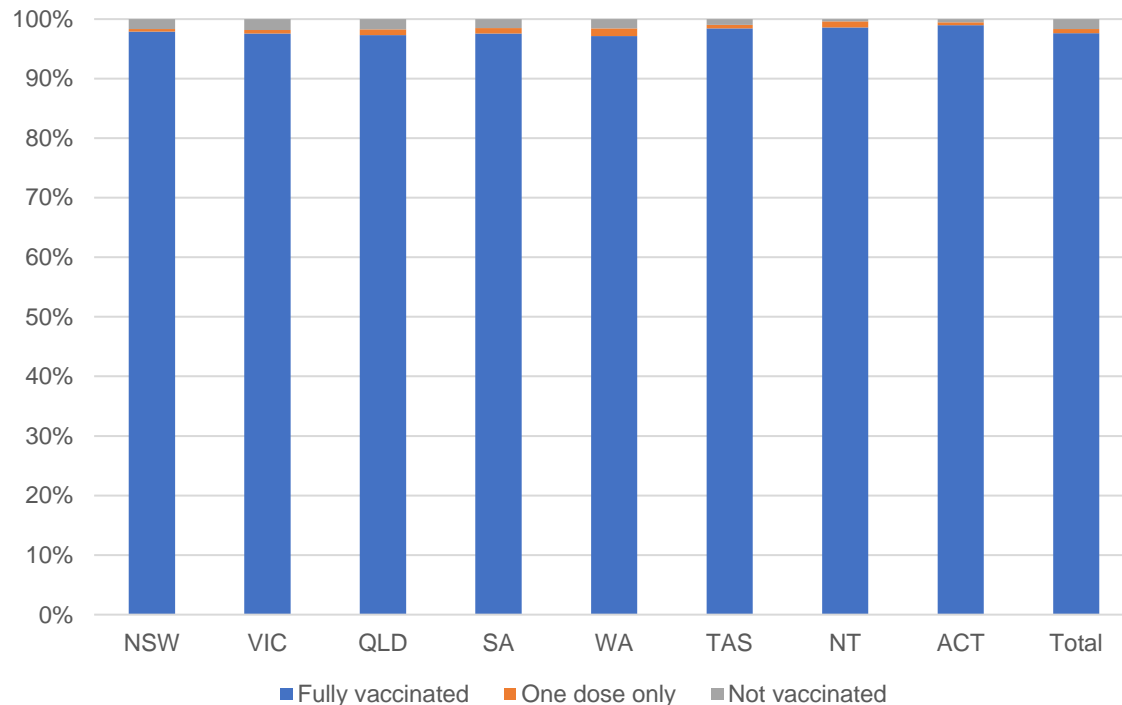
178,054

People with at least one dose

Australia's COVID-19 Vaccine Roadmap

Data as at:
16 June 2022
Updated weekly

Aged care resident vaccinations



Aged care worker vaccinations

Jurisdictions	Total workers with at least one dose	Workers fully vaccinated	% Workers with at least one dose	% Workers fully vaccinated
NSW	77,698	77,685	99.9%	99.8%
VIC	70,768	70,765	99.5%	99.5%
QLD	48,221	48,216	99.6%	99.6%
SA	27,347	27,337	100.0%	100.0%
WA	24,532	24,527	100.0%	100.0%
TAS	7,647	7,646	100.0%	100.0%
NT	939	939	100.0%	100.0%
ACT	2,920	2,920	100.0%	100.0%
Total	260,072	260,035	99.8%	99.7%

Source: Residential aged care provider self-reported COVID-19 vaccination information

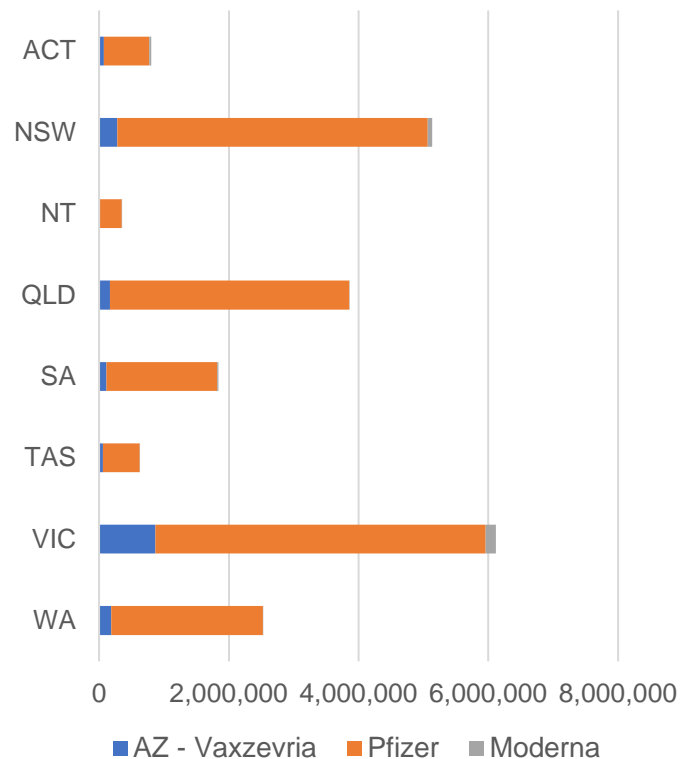
*Status updates are provided by facilities at least once per week. Reporting is updated Monday to Friday to encompass different facility updates being made on different days.

Data is sourced directly from Aged Care Service Providers and is not drawn or closely aligned with data from AIR due to inconsistencies and potential lags in uploading of records.

Data as at:
19 Jun 2022

Jurisdiction administered

Total vaccine doses administered in State and Territory clinics as at 19 June



21,270,050 total vaccine doses administered
in State and Territory clinics as at 19 June
+ **1,324** recorded in the last 24 hours
+ **23,094** recorded in the last 7 days

NSW
5,138,276
(+366 daily
increase)

VIC
6,125,107
(+246 daily
increase)

QLD
3,859,721
(+68 daily
increase)

WA
2,528,156
(+159 daily
increase)

TAS
627,641
(+135 daily
increase)

SA
1,840,364
(+291 daily
increase)

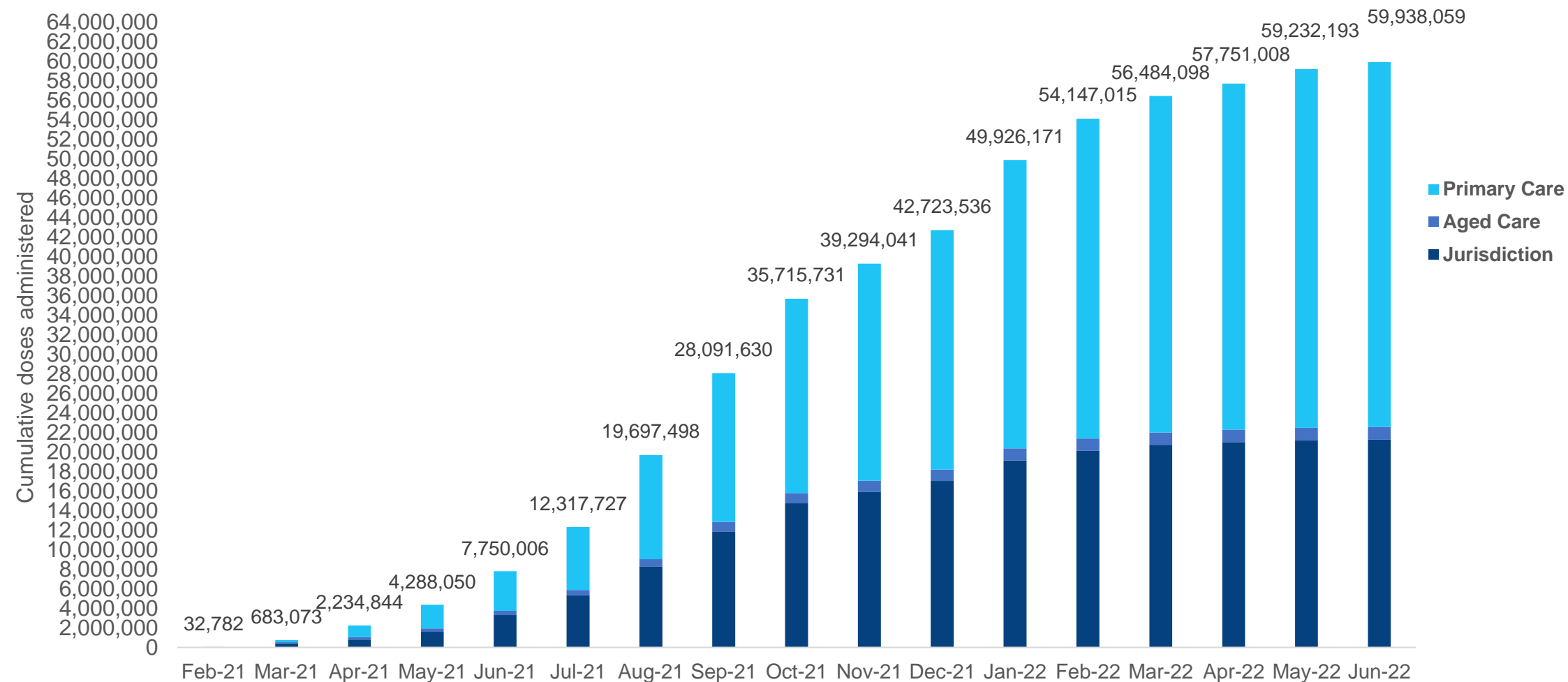
ACT
803,918
(+54 daily
increase)

NT
346,867
(<10 daily
increase)

*Sourced from the Australian Immunisation Register. Numbers are calculated as difference in daily cumulative reported numbers to allow for historical corrections.

Cumulative doses administered by channel

Data as at:
19 Jun 2022

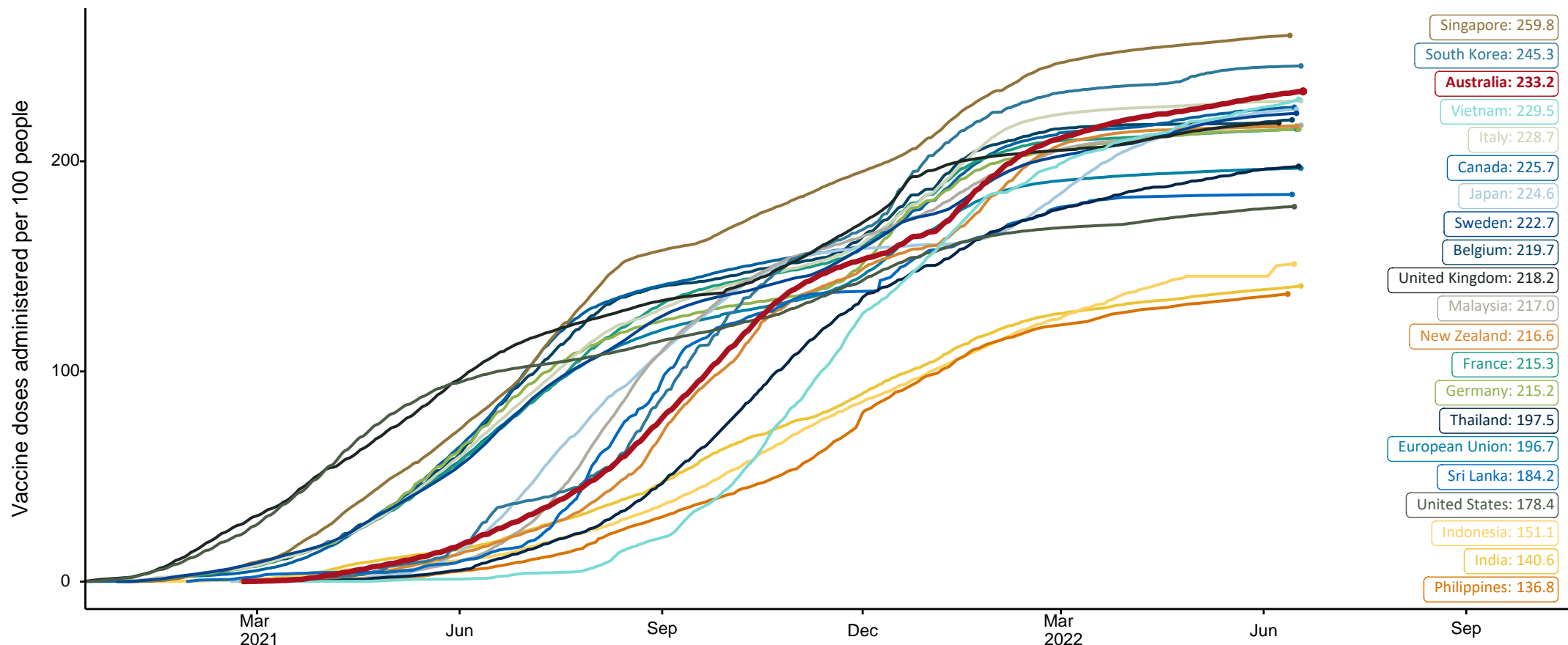


Source: Australian Immunisation Register

COVID-19 vaccine doses per 100, Australia and select countries

Data as at:
19 Jun 2022

Australia's COVID-19
Vaccine Roadmap



Note: From 11 January 2022, data for Australia includes all doses administered to people 5 and over. Prior to 11 January, data was for 12 and over.

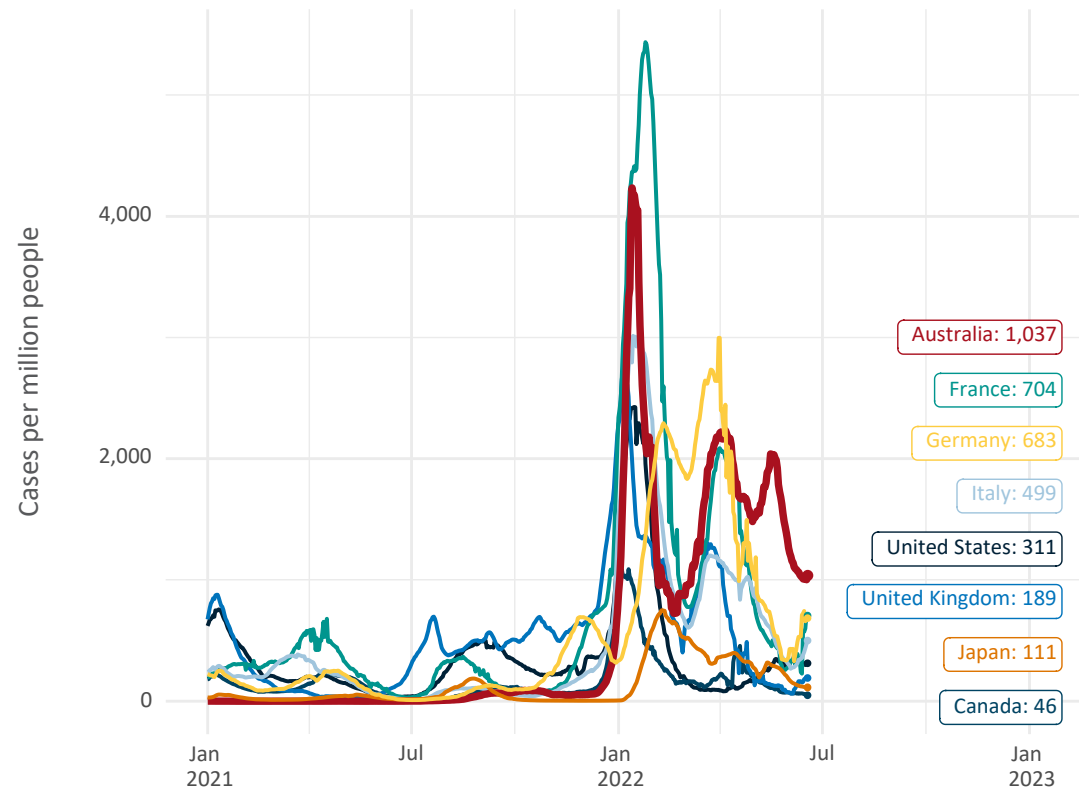
Source: Department of Health (Australia), Our World in Data (international)

Latest data: 19 June

Data as at:
19 Jun 2022

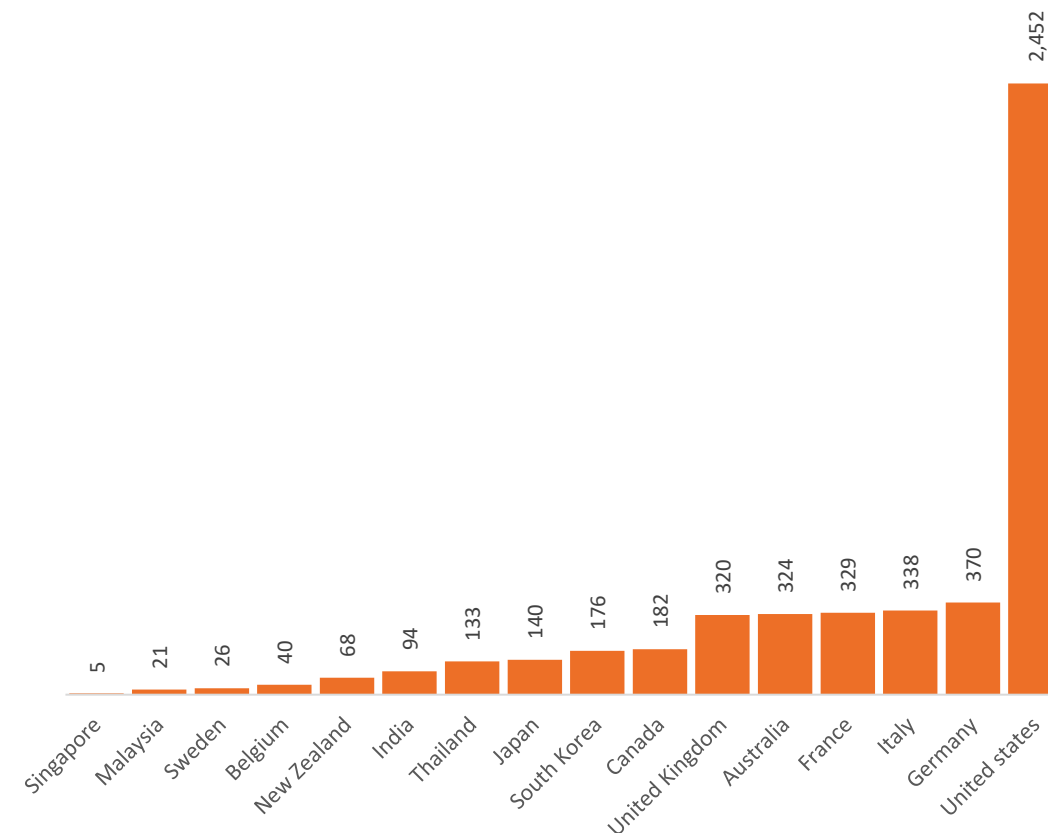
International data – COVID-19

New daily cases per million since 2021, Australia and G7 countries
Smoothed - 7 day average



Source: OWID
Data downloaded: 20 Jun 2022 09:21
Latest data: 18 Jun 2022

COVID-19 deaths in past 7 days - Australia and select countries



Source: OWID
Data downloaded: 20 Jun 2022 09:21
Latest data: 18 Jun 2022

Administration and Utilisation

Doses as at 19 June 2022

	Ordered	Available	Administered	Stock on Hand at Sites	Estimated Dose Utilisation %
	Up to 19/06/22	Delivered up to 12/06/22 including redistributions	Up to 19/06/22		(see note)
NSW	6,113,372	6,112,972	5,138,276	363,399	94%
VIC	7,006,754	7,004,754	6,125,107	240,408	97%
QLD	4,847,302	4,805,642	3,859,721	465,506	90%
WA	2,683,578	2,681,058	2,528,156	86,107	Fully utilised
SA	2,152,220	2,122,920	1,840,364	102,087	97%
TAS	656,390	656,390	627,641	1,734	Fully utilised
NT	424,448	413,756	346,867	30,107	94%
ACT	651,586	651,486	803,918	8,158	Fully utilised
Jurisdiction delivered total	24,535,650	24,448,978	21,270,050	1,297,505	97%
Commonwealth Vaccination Providers	1,439,278	1,434,438	1,312,632	8,079	Fully utilised
Commonwealth Primary Care & Other	58,683,174	58,206,512	37,355,377	15,071,819	74%
Total	84,658,102	84,089,928	59,938,059	16,377,403	81%

About this data

- Ordered – Total doses delivered or in transit to sites. Based on logistics provider data. This figure includes doses allocated for administration in the coming week.
- Available – total doses that could have been administered to date, less doses re-distributed from States & Territories to Primary Care or Commonwealth Vaccination Providers (i.e., does not include those deliveries recently received, and intended for use in the coming week).
- Administered – Doses administered as at 19 June 2022.
- Stock on Hand at Sites – Available doses minus Administered doses and a small % wastage.
- The dose utilisation is calculated based on the total doses administered and a small % wastage in line with international standards in relation to total available doses.
- For Commonwealth Vaccination Providers, the doses available for administration is for the full period (up to 19 June 2022).
- Commonwealth Vaccination Providers utilisation is not provided as the in-reach rollout is demand-based.