



Australian Government
Operation COVID Shield

COVID-19 Vaccine Roll-out

02 June 2022

Data as at:
01 Jun 2022

Total vaccine doses



59,292,178 total vaccine
doses administered nationally as at 01 June
+59,985 recorded in the last 24 hours



20,071,312

people have had at least one
dose

>95%

of people over the age of 16
have had at least one dose



19,737,002

people are fully vaccinated

>95%

of people over the age of 16 are
fully vaccinated



13,717,904

people over the age of 16
who have received three or
more doses

NSW
18,386,051
(+18,680 daily
increase)

VIC
15,569,715
(+14,488 daily
increase)

QLD
11,212,810
(+11,739 daily
increase)

WA
6,528,096
(+6,592 daily
increase)

TAS
1,342,151
(+1,486 daily
increase)

SA
4,112,475
(+4,830 daily
increase)

ACT
1,551,998
(+1,790 daily
increase)

NT
588,882
(+380 daily
increase)

*Administration state breakdown indicates state in which a vaccine was administered

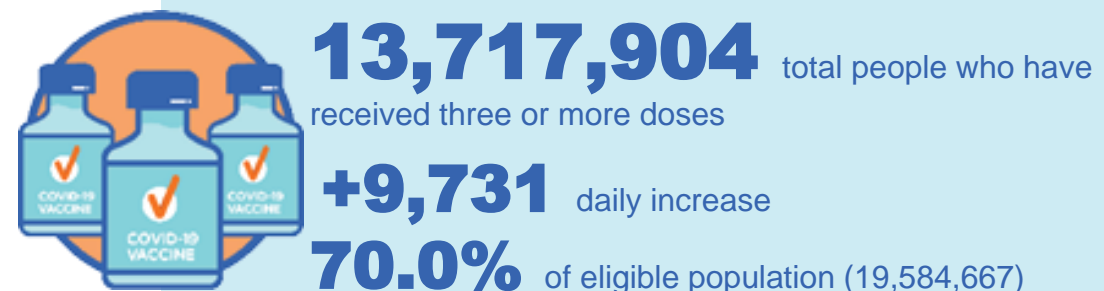
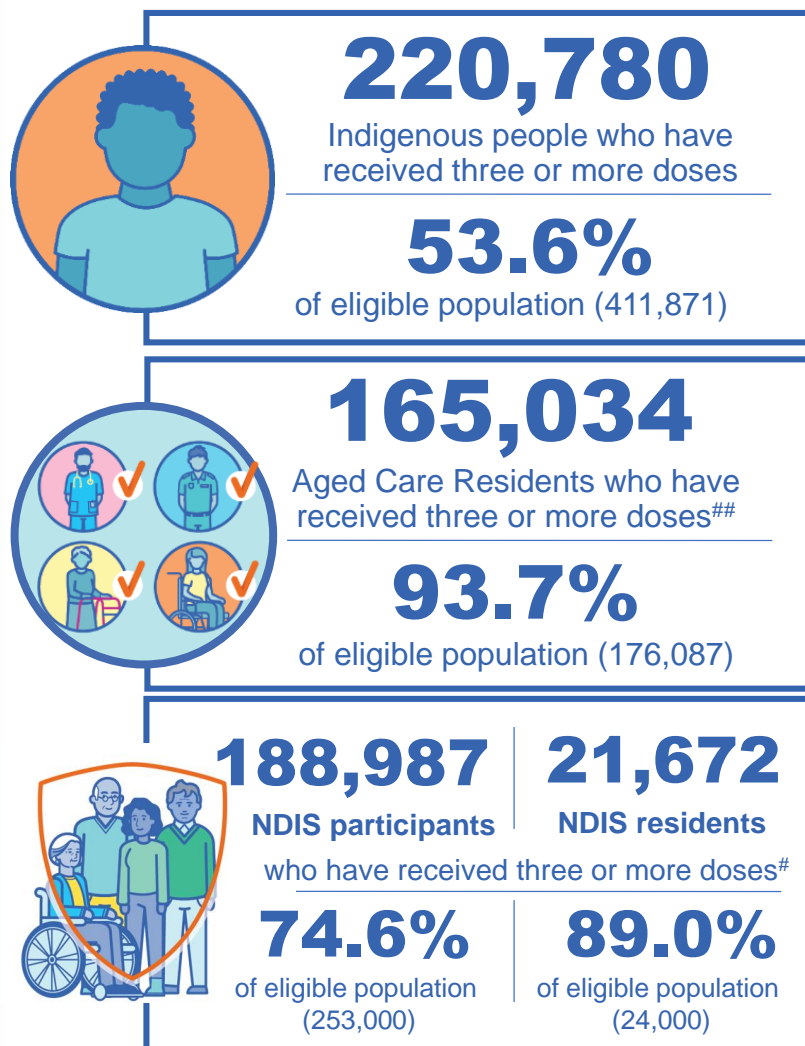
**Overall dose count includes instances of more than three doses per person in a small number of cases.

Source: Australian Immunisation Register

Booster Vaccinations

Australia's COVID-19
Vaccine Roadmap

Data as at:
01 Jun 2022



	Number of People	Daily Increase	% of Eligible
NSW	4,183,969	3,012	67.4%
VIC	3,661,776	2,209	72.3%
QLD	2,374,453	1,707	63.1%
WA	1,687,899	1,163	83.3%
SA	977,102	817	73.4%
TAS	313,601	202	72.6%
ACT	271,536	218	78.4%
NT	129,833	91	77.5%

*People may belong to multiple groups and could be represented in the above breakdowns multiple times.
NDIS participants data as at 30 May 2022. ## Aged Care Residents data as at 01 June 2022.

Source: Australian Immunisation Register

117,735 doses administered to persons residing in other territories or with missing residential information

Winter / Fourth Doses

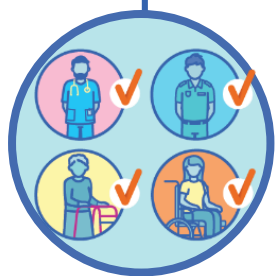
Data as at:
01 Jun 2022

Australia's COVID-19
Vaccine Roadmap



1,605,307 total people (16+) who have received four or more doses

+46,168 daily increase



1,431,982

People aged 65+ who have
received four or more doses

50.6%

of eligible population (2,828,991)

	Number of People 16+	Daily Increase
ACT	33,842	927
NSW	518,808	14,530
NT	7,081	145
QLD	305,394	9,062
SA	129,337	3,661
TAS	45,142	1,234
VIC	402,919	11,352
WA	155,197	4,966

7,587 doses administered to persons
residing in other territories or with
missing residential information

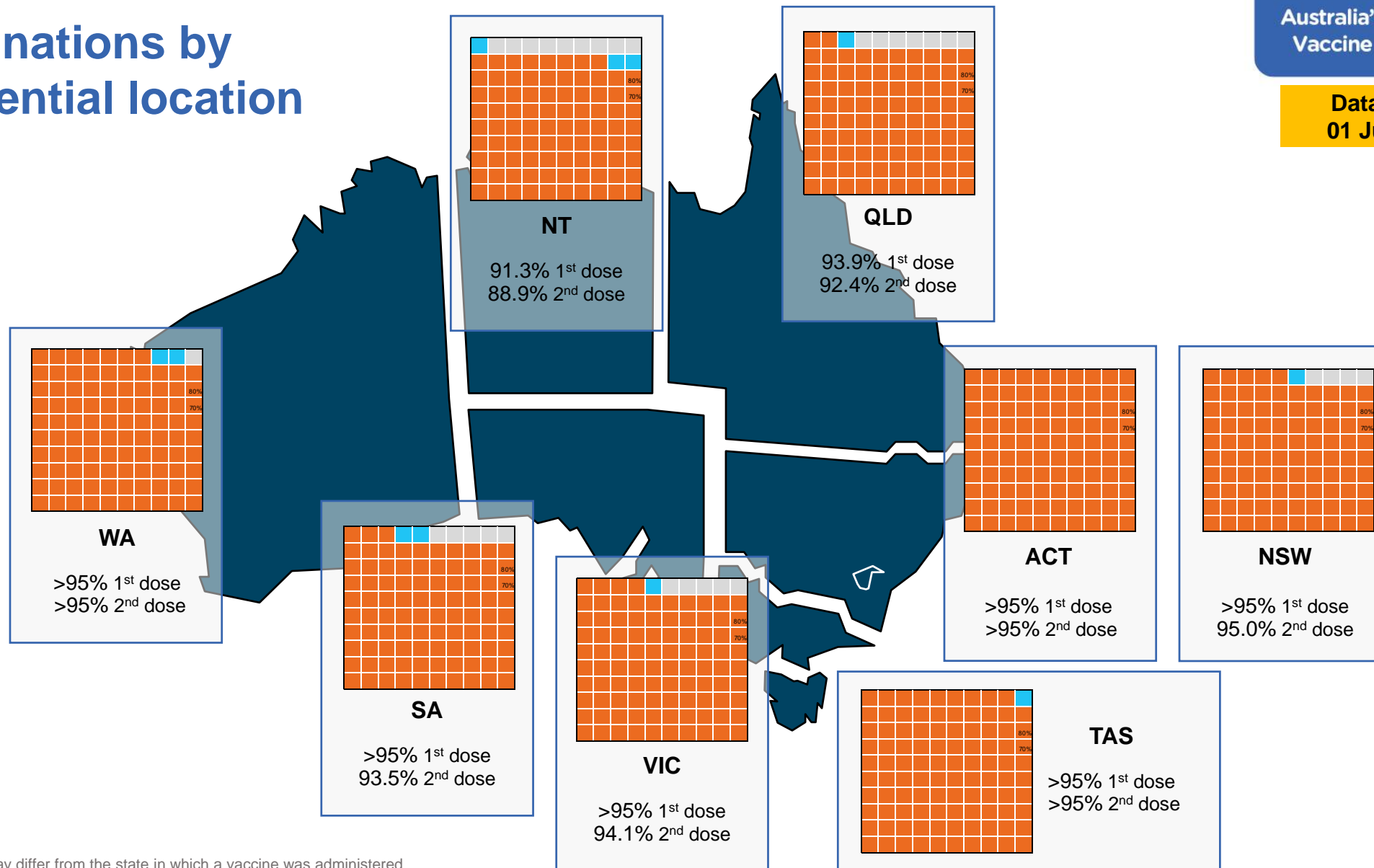
*People become eligible for a winter booster four months after their third dose.

Source: Australian Immunisation Register

Vaccinations by residential location

Australia's COVID-19
Vaccine Roadmap

Data as at:
01 Jun 2022



*Residential state may differ from the state in which a vaccine was administered

Commonwealth and Jurisdiction vaccine doses administered

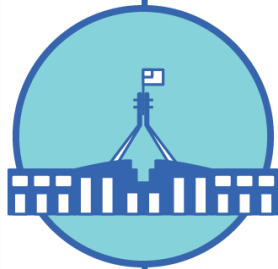
Data as at:
01 Jun 2022



59,292,178 total vaccine
doses administered nationally as at 01 June
+ 59,985 recorded in the last 24 hours



21,203,429
doses administered by state
and territory facilities
+ 5,513
recorded in the last 24 hours



38,088,749
doses administered by
commonwealth facilities
+ 54,472
recorded in the last 24 hours

36,787,612 total vaccine doses
administered in primary care settings
1,301,137 total vaccine doses
administered in aged care and disability
settings

NSW	Jurisdictions	Commonwealth
Cumulative	5,127,354	13,258,697
Daily increase	529	18,151

VIC	Jurisdictions	Commonwealth
Cumulative	6,106,020	9,463,695
Daily increase	1,349	13,139

QLD	Jurisdictions	Commonwealth
Cumulative	3,853,051	7,359,759
Daily increase	667	11,072

WA	Jurisdictions	Commonwealth
Cumulative	2,519,114	4,008,982
Daily increase	944	5,648

TAS	Jurisdictions	Commonwealth
Cumulative	625,140	717,011
Daily increase	198	1,288

SA	Jurisdictions	Commonwealth
Cumulative	1,830,167	2,282,308
Daily increase	913	3,917

ACT	Jurisdictions	Commonwealth
Cumulative	797,102	754,896
Daily increase	796	994

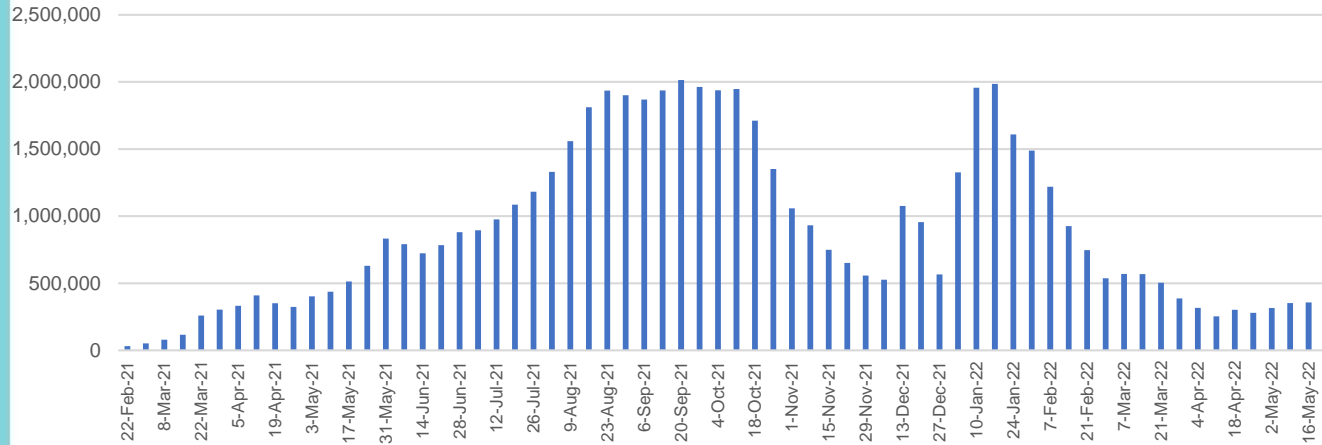
NT	Jurisdictions	Commonwealth
Cumulative	345,481	243,401
Daily increase	117	263

Vaccine milestone charts

Data as at:
01 Jun 2022

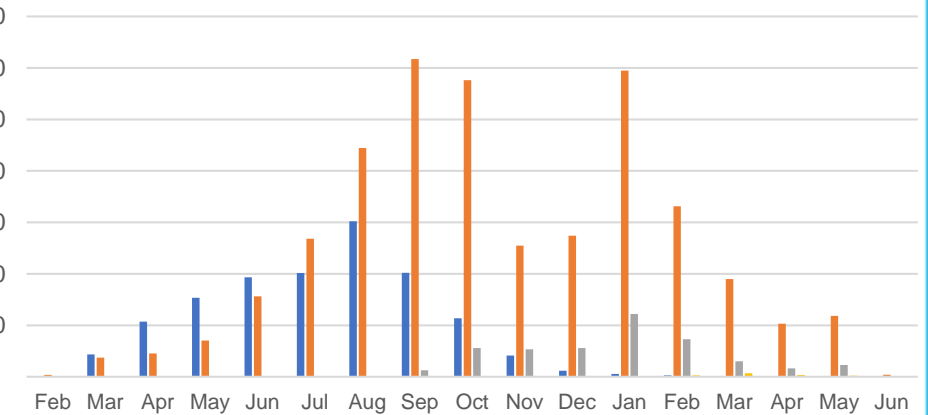
Australia's COVID-19
Vaccine Roadmap

Doses Administered by Week

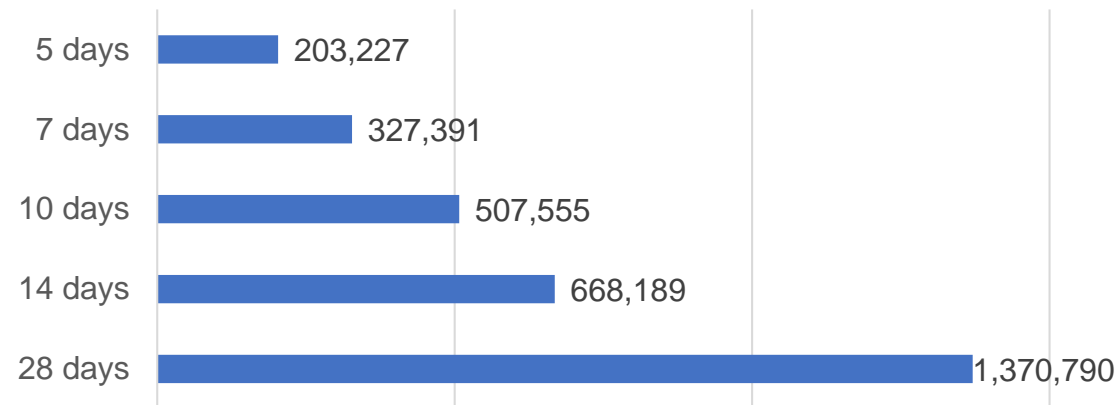


Doses by administration month and vaccine type

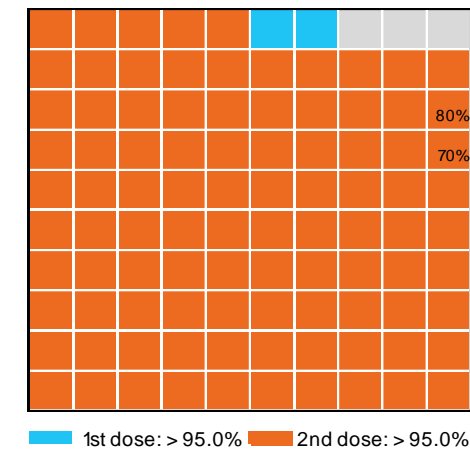
AZ - Vaxzevria Pfizer Moderna Novavax



Doses Reported



Eligible population percentage coverage



*Each square represents 1% of the national population.
Squares are filled as milestones are achieved.

*Sourced from the Australian Immunisation Register.

Doses by age and sex

First and second doses by age and sex

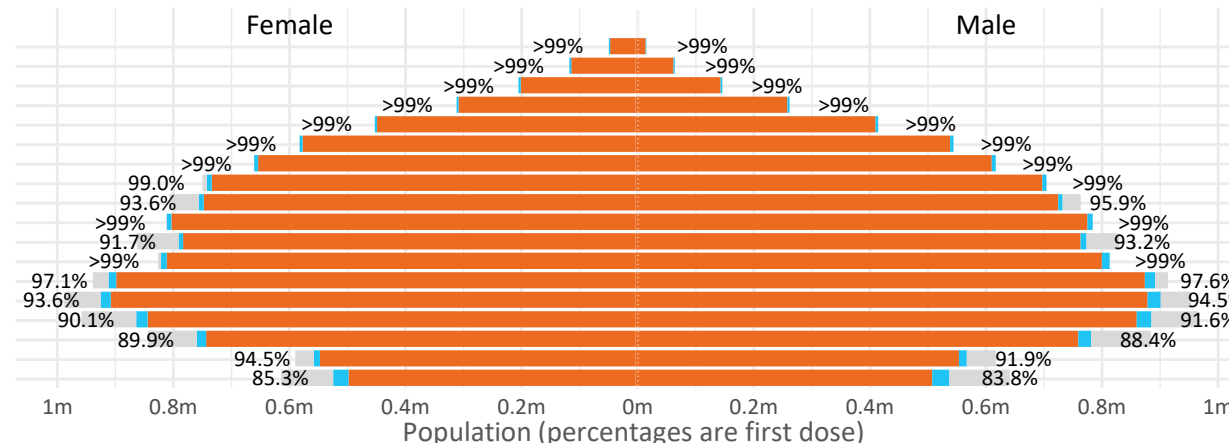
Australia's COVID-19
Vaccine Roadmap

Data as at:
01 Jun 2022

Age	Dose 1	Dose 2
95+	64,065 (>99%)	60,661 (>99%)
90-94	180,051 (>99%)	174,511 (>99%)
85-89	348,151 (>99%)	341,276 (>99%)
80-84	568,721 (>99%)	561,509 (>99%)
75-79	859,945 (>99%)	851,576 (>99%)
70-74	1,117,262 (>99%)	1,106,056 (>99%)
65-69	1,267,798 (>99%)	1,253,308 (>99%)
60-64	1,435,036 (>99%)	1,418,791 (98.8%)
55-59	1,475,779 (94.9%)	1,459,176 (93.8%)
50-54	1,581,570 (>99%)	1,564,606 (>99%)
45-49	1,551,321 (92.5%)	1,532,897 (91.4%)
40-44	1,621,942 (>99%)	1,597,911 (98.6%)
35-39	1,791,244 (97.6%)	1,759,190 (95.9%)
30-34	1,817,493 (94.5%)	1,775,754 (92.3%)
25-29	1,743,251 (91.4%)	1,695,754 (88.9%)
20-24	1,532,590 (89.5%)	1,492,842 (87.2%)
16-19	1,115,093 (93.3%)	1,091,184 (91.3%)
12-15	1,051,987 (84.6%)	996,443 (80.1%)

	16+	50+	12-15	5-11
Dose 1	97.34% (20,071,312 doses / 20,619,959 people)	>99% (8,898,378 doses / 8,749,703 people)	84.57% (1,051,987 doses / 1,243,990 people)	52.63% (1,198,151 doses / 2,276,638 people)
Dose 2	95.72% (19,737,002 doses / 20,619,959 people)	>99% (8,791,470 doses / 8,749,703 people)	80.10% (996,443 doses / 1,243,990 people)	38.81% (883,466 doses / 2,276,638 people)

Dose 1 Dose 2 Population

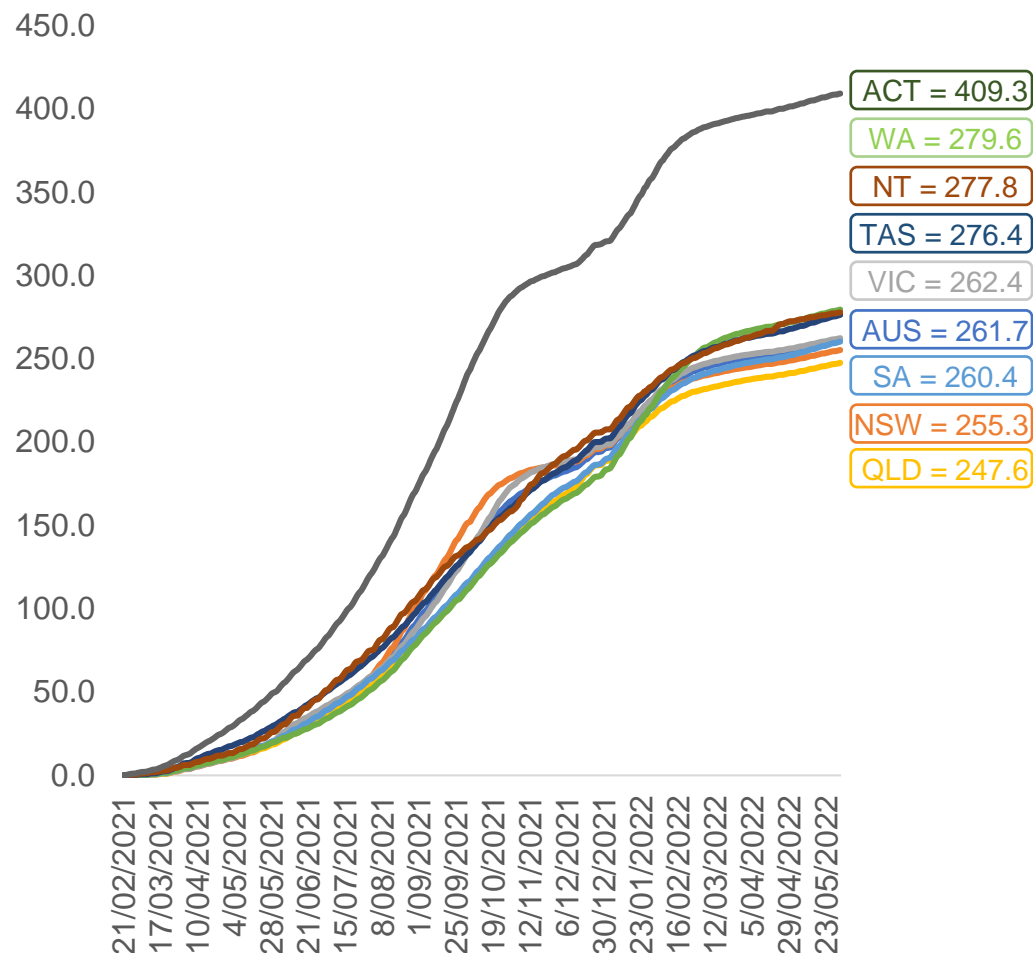


	AUS	ACT	NSW	NT	QLD	SA	TAS	VIC	WA
16 and over - dose 1	20,071,312	352,885	6,331,171	174,035	3,863,789	1,376,086	445,228	5,164,297	2,096,843
16 and over - dose 2	19,737,002	347,202	6,234,099	169,359	3,800,060	1,346,912	436,204	5,086,907	2,065,655
16 and over - population	20,619,959*	344,037	6,565,651	190,571	4,112,707	1,440,400	440,172	5,407,574	2,114,978
16 and over % with dose 1	97.34%	>99%	96.43%	91.32%	93.95%	95.53%	>99%	95.50%	>99%
16 and over % with dose 2	95.72%	>99%	94.95%	88.87%	92.40%	93.51%	>99%	94.07%	97.67%
5 to 11 - dose 1	1,198,151	31,908	357,636	13,212	207,857	84,002	28,572	325,966	141,205
5 to 11 - dose 2	883,466	27,084	268,922	8,568	147,672	62,013	22,899	241,480	100,234
5 to 11 - population	2,276,638	39,789	716,460	24,750	478,731	148,816	45,033	578,499	244,154
5 to 11 % with dose 1	52.63%	80.19%	49.92%	53.38%	43.42%	56.45%	63.45%	56.35%	57.83%
5 to 11 % with dose 2	38.81%	68.07%	37.53%	34.62%	30.85%	41.67%	50.85%	41.74%	41.05%
12 to 15 - dose 1	1,051,987	20,109	323,399	10,808	206,190	68,341	22,927	274,910	115,746
12 to 15 - dose 2	996,443	19,581	309,071	9,734	192,916	64,631	21,807	263,126	107,260
12 to 15 - population	1,243,990	19,693	390,330	13,060	270,146	82,747	26,308	308,611	132,869
12 to 15 % with dose 1	84.57%	>99%	82.85%	82.76%	76.33%	82.59%	87.15%	89.08%	87.11%
12 to 15 % with dose 2	80.10%	>99%	79.18%	74.53%	71.41%	78.11%	82.89%	85.26%	80.73%

*National population will not equal sum of listed jurisdictions due to a small number of people counted in national population residing in some 'other' territories. Sum of state doses will not add to national total as some records are unable to be geocoded to a State or Territory.
Doses sourced from Australian Immunisation Register, population from ABS ERP June 2020

Vaccinations by location

Cumulative total doses administered vs eligible state populations*

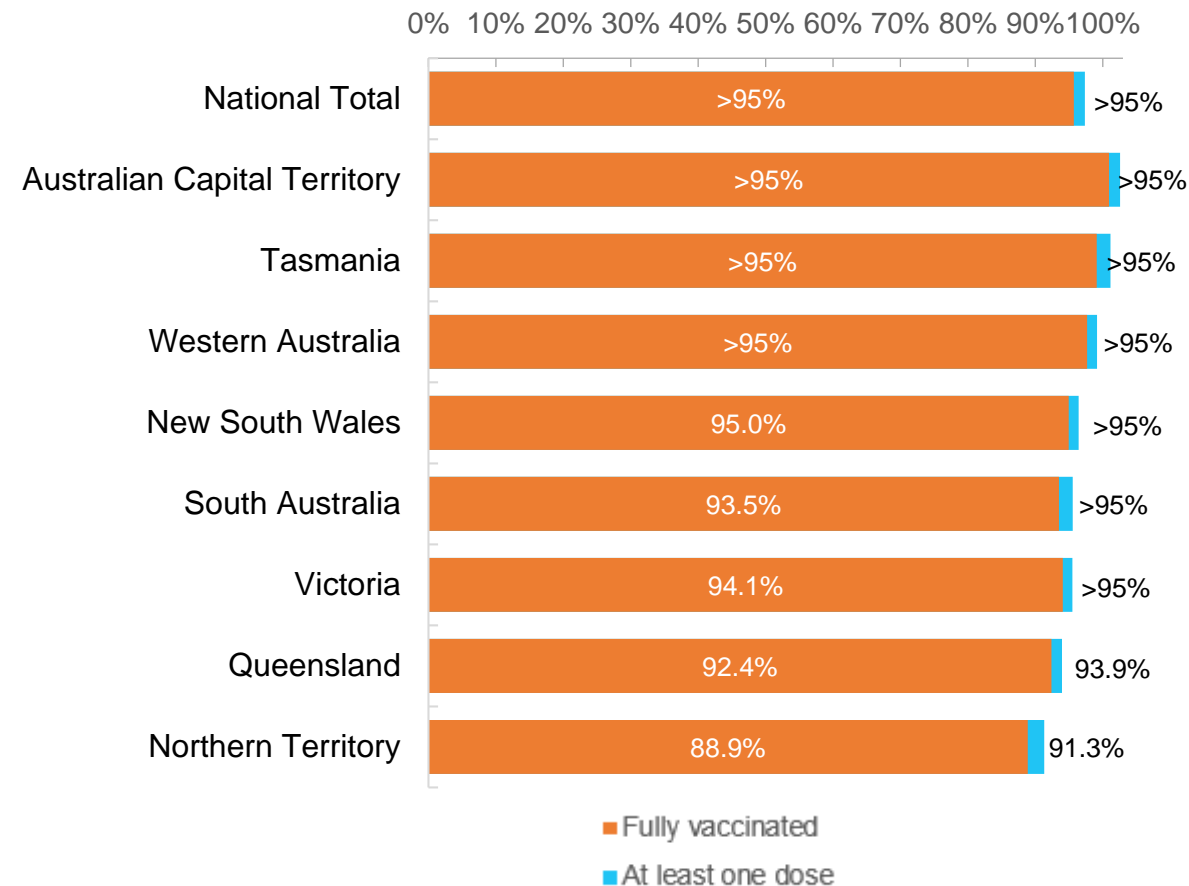


*Not an indication of percentage vaccinated, numbers will exceed 100 due to multiple doses required per person of the population. All doses are included for those aged 12 and above, and are based on vaccination provider location.

Data as at:
01 Jun 2022

Australia's COVID-19
Vaccine Roadmap

First and Second Doses by residential location



Aboriginal and Torres Strait Islander peoples

Number of people vaccinated

Data as at:
31 May 2022
Updated weekly

Australia's COVID-19
Vaccine Roadmap



442,855

people over the age of 16
have had at least one dose

84.9%

of people over the age of 16
have had at least one dose



424,192

people over the age of 16
are fully vaccinated

81.4%

of people over the age of 16 are
fully vaccinated



People aged 12 – 15 years

48,345

42,517

68.3%

At least one dose

60.0%

Fully vaccinated

178 Aboriginal community controlled health services (ACCHS)

0#
ACT

50
NSW

27
NT

44
QLD

12
SA

3
TAS

21
VIC

21
WA

Medicare Address State ^{##}	Individuals Dose 1	Individuals Dose 1 %	Individuals Dose 2	Individuals Dose 2 %
Australian Capital Territory	4,785	91.4%	4,663	89.0%
New South Wales	136,223	87.3%	133,150	85.4%
Northern Territory	41,526	89.6%	39,512	85.3%
Queensland	116,270	81.8%	110,848	78.0%
South Australia	20,049	80.5%	18,653	74.9%
Tasmania	13,961	88.8%	13,553	86.2%
Victoria	35,691	90.4%	34,911	88.5%
Western Australia	53,737	86.7%	49,937	80.6%
Unknown/Other Territories	20,613	69.7%	18,965	64.1%
Totals	442,855	84.9%	424,192	81.4%

Source: Australian Immunisation Register

*Identifying as Aboriginal and Torres Strait Islander is optional and the estimated population may be under reported.

**Includes all Aboriginal and Torres Strait Islander peoples who have received a vaccination, not limited to those administered in an ACCHS setting

#ACCHS in the ACT are currently operating as a Commonwealth Vaccine Clinics so not included to avoid double counting

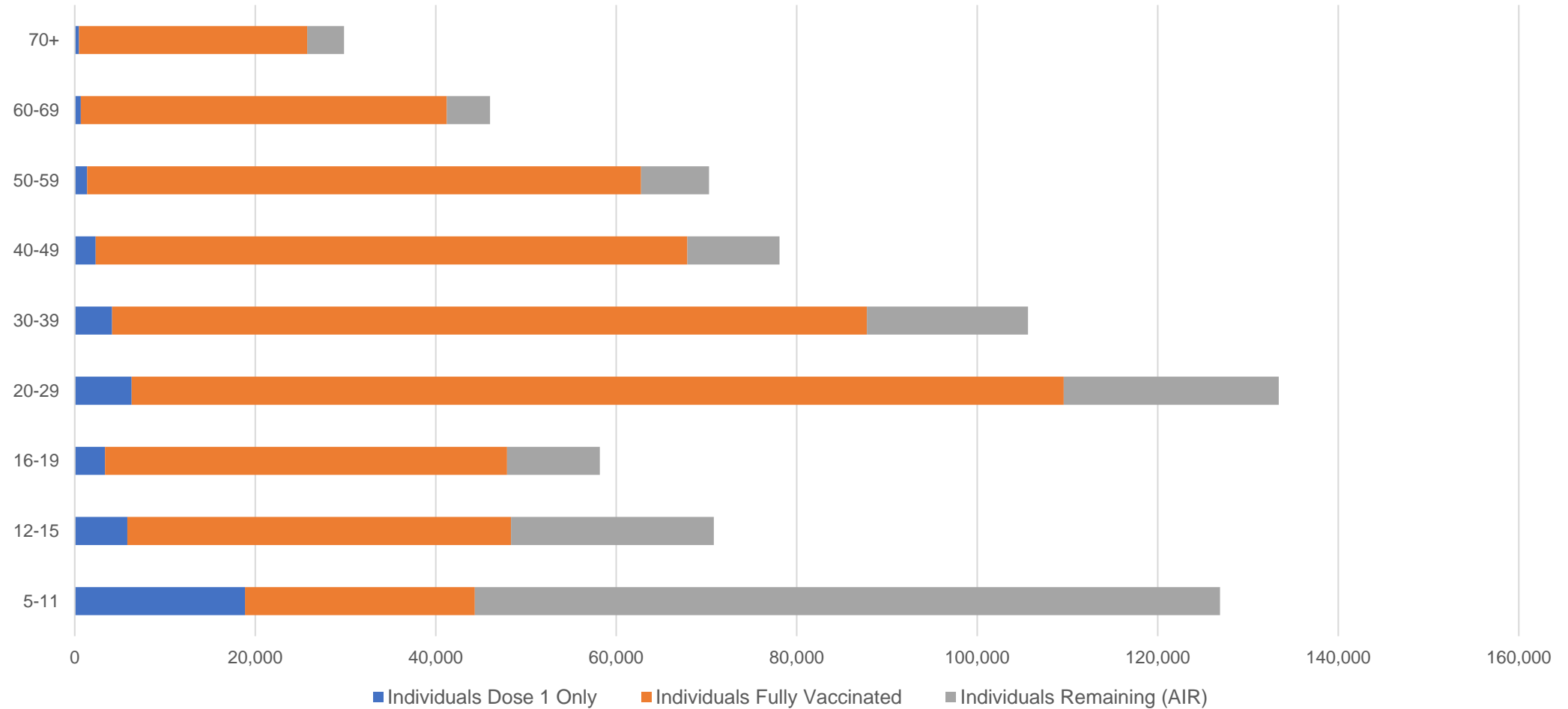
##The above table includes all identified Aboriginal and Torres Strait Islander people who are aged 16 and above by their state of residence.

Aboriginal and Torres Strait Islander peoples

Number of people vaccinated by age

Data as at:
31 May 2022
Updated weekly

Australia's COVID-19
Vaccine Roadmap



Source: Australian Immunisation Register

Commonwealth primary care

Data as at:
01 Jun 2022

Australia's COVID-19
Vaccine Roadmap



Primary care vaccine administration sites

5,720	128	178	3,602
GPs	CVCs	ACCHS	Pharmacies



36,787,612 total vaccine doses administered
primary care settings as at 01 June
+ 53,018 recorded in the last 24 hours

Primary care vaccinations by provider type

	Doses administered	Daily increase	7 day increase
General Practice* includes other Commonwealth	29,482,101	38,589	205,513
Pharmacy	7,305,511	14,429	79,424

NSW
12,692,237
(+17,373 daily increase)

VIC
9,134,845
(+12,819 daily increase)

QLD
7,076,621
(+10,394 daily increase)

WA
3,871,478
(+5,463 daily increase)

TAS
695,642
(+1,252 daily increase)

SA
2,201,473
(+3,756 daily increase)

ACT
580,996
(+954 daily increase)

NT
218,662
(+177 daily increase)

315,658

doses administered to persons
residing in other territories or with
missing residential information

*General practice includes Commonwealth Vaccination Clinics, Aboriginal Community Health Centres, Royal Flying Doctor Service and other Commonwealth vaccination facilities

Source: Australian Immunisation Register

Data as at:
01 Jun 2022

Commonwealth aged care and disability doses administered



1,301,137 (+ 1,454 last 24 hours)

Total vaccine doses administered in aged care and disability facilities as at 01 June

Number of doses administered as part of the Commonwealth aged and disability care rollout

NSW
567,305
(+667 daily increase)

VIC
244,792
(+236 daily increase)

QLD
206,861
(+253 daily increase)

WA
109,962
(+17 daily increase)

TAS
23,554
(+27 daily increase)

SA
85,076
(+42 daily increase)

ACT
17,737
(+23 daily increase)

NT
7,656
(<10 daily increase)

38,194

doses administered to persons
residing in other territories or with
missing residential information

*Sourced from the Australian Immunisation Register. Includes all persons vaccinated at participating residential aged care, disability and related industry settings.

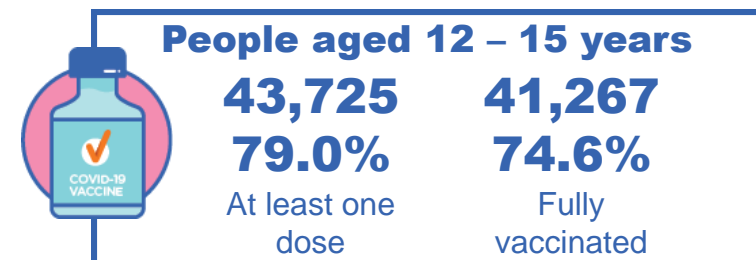
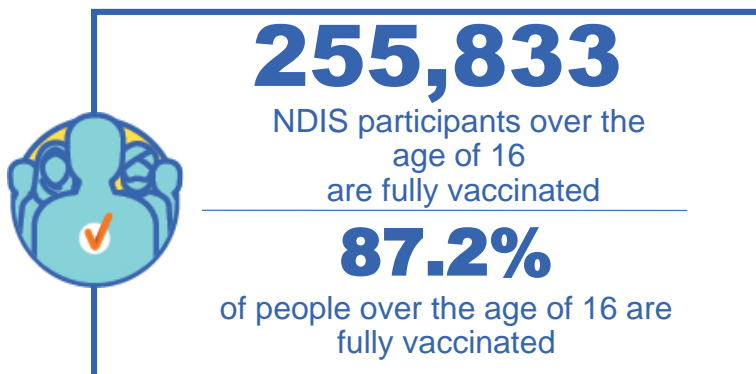
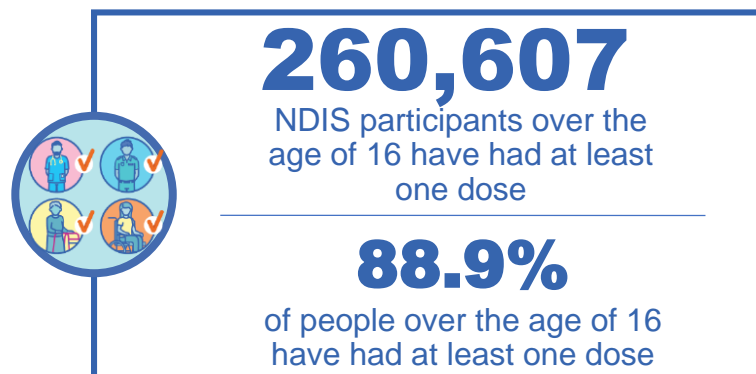
**State level breakdown indicates the residential location and may not align to the state in which the vaccination occurred.

Source: Australian Immunisation Register

National Disability Insurance Scheme (NDIS) reported vaccinations

Data as at:
26 May 2022
Updated weekly

Australia's COVID-19
Vaccine Roadmap



NDIS participant vaccinations

	People aged 16+ with at least one dose	People aged 16+ fully vaccinated	% People aged 16+ with at least one dose	% People aged 16+ fully vaccinated
ACT	4,920	4,852	90.7%	89.5%
NSW	79,886	78,583	89.0%	87.6%
NT	2,258	2,190	79.1%	76.8%
QLD	51,505	50,533	87.5%	85.9%
SA	21,307	20,800	86.9%	84.8%
TAS	6,526	6,373	88.8%	86.7%
VIC	69,309	68,130	90.0%	88.5%
WA	24,896	24,372	90.4%	88.5%
National	260,607	255,833	88.9%	87.2%

Source: Linkage between National Disability Insurance Agency data and the Australian Immunisation Register. Total NDIS participant numbers as at 28 February. Australian Immunisation Register data as at 25 May. Includes all participants regardless of residence type.

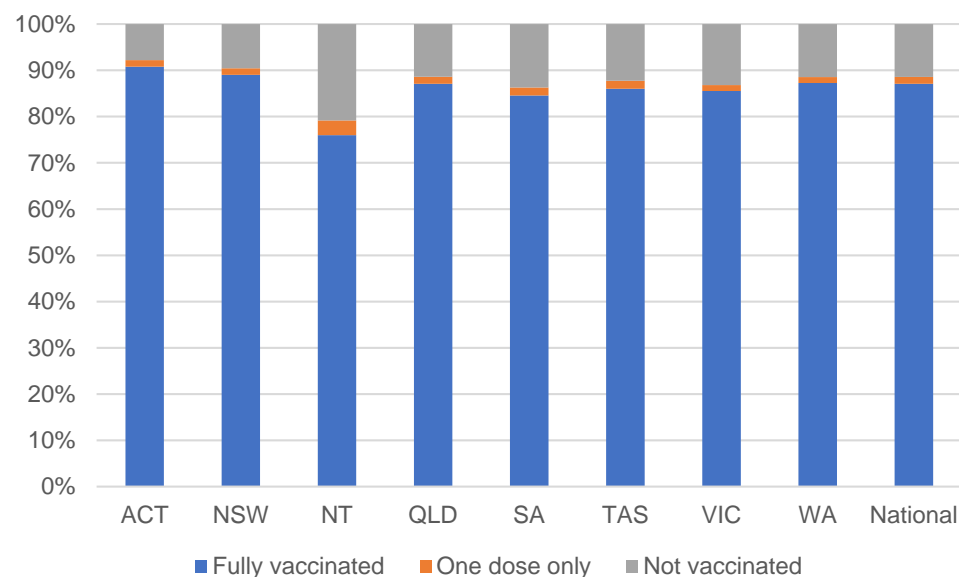
National Disability Insurance Scheme (NDIS) reported vaccinations

Data as at:
26 May 2022
Updated weekly

Australia's COVID-19
Vaccine Roadmap

NATIONAL	Total people with at least one dose	People fully vaccinated	Total number of individuals in cohort	% People with at least one dose	% People fully vaccinated
NDIS participants living in disability accommodation	20,762	20,425	23,352	88.9%	87.5%

NDIS participants in disability and aged care accommodation



Source: Linkage between National Disability Insurance Agency data and the Australian Immunisation Register. Includes participants residing in disability accommodation only.

Source: Total NDIS participant numbers as at 28 February. Participant data as at 24 May. Australian Immunisation Register data as at 25 May. Worker data as at 26 May.

NDIS workforce vaccinations

	NDIS workers with at least one dose	NDIS workers fully vaccinated	% NDIS workers with at least one dose	% NDIS workers fully vaccinated
NSW	126,495	120,487	98.3%	93.6%
VIC	117,331	113,969	98.3%	95.5%
QLD	70,932	69,987	97.7%	96.4%
WA	34,530	33,014	98.8%	94.4%
SA	35,910	33,756	98.6%	92.7%
TAS	10,944	10,696	99.0%	96.8%
ACT	12,301	12,277	99.7%	99.6%
NT	3,854	3,708	99.6%	95.9%
TOTAL	412,297	397,894	98.3%	94.9%

Source: the NDIS Commission has established a requirement for registered NDIS providers who provide intensive disability support services to report on the vaccination status of workers they employ, or otherwise engage, to deliver NDIS-funded supports and services, and who are required to be vaccinated in accordance with in-force state and territory public health orders. The statistics reflect data reported to the NDIS Commission by registered NDIS providers and should be considered indicative and subject to change

Note: Some registered NDIS providers are yet to report on the vaccination status of their workforce. The NDIS Commission is working with those providers around reporting requirements.

Remaining workers not included include those exempt from vaccination requirements, workers whose vaccination status is not yet verified by the provider (such as workers on leave) and provider reporting anomalies.

Residential aged care vaccination rollout

Residential aged care facilities status

176,160

People fully vaccinated

177,559

People with at least one dose

Australia's COVID-19 Vaccine Roadmap

Data as at:
26 May 2022
Updated weekly

Aged care resident vaccinations



Aged care worker vaccinations

Jurisdictions	Total workers with at least one dose	Workers fully vaccinated	% Workers with at least one dose	% Workers fully vaccinated
NSW	77,045	77,037	99.8%	99.8%
VIC	68,568	68,567	98.8%	98.8%
QLD	47,850	47,845	99.5%	99.4%
SA	27,008	26,994	99.2%	99.1%
WA	24,625	24,621	100.0%	100.0%
TAS	7,598	7,596	100.0%	100.0%
NT	882	882	100.0%	100.0%
ACT	2,943	2,943	100.0%	100.0%
Total	256,519	256,485	99.4%	99.4%

Source: My Aged Care Portal vaccination progress

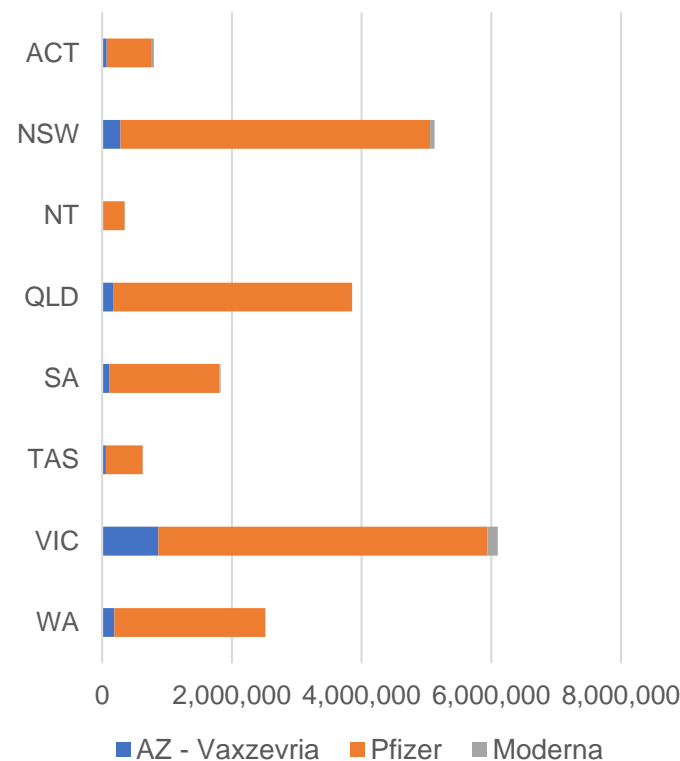
*Status updates are provided by facilities at least once per week. Reporting is updated Monday to Friday to encompass different facility updates being made on different days.

Data is sourced directly from Aged Care Service Providers and is not drawn or closely aligned with data from AIR due to inconsistencies and potential lags in uploading of records.

Data as at:
01 Jun 2022

Jurisdiction administered

Total vaccine doses administered in State and Territory clinics as at 01 June



21,203,429 total vaccine doses administered
in State and Territory clinics as at 01 June
+ **5,513** recorded in the last 24 hours
+ **35,889** recorded in the last 7 days

NSW
5,127,354
(+529 daily increase)

VIC
6,106,020
(+1,349 daily increase)

QLD
3,853,051
(+667 daily increase)

WA
2,519,114
(+944 daily increase)

TAS
625,140
(+198 daily increase)

SA
1,830,167
(+913 daily increase)

ACT
797,102
(+796 daily increase)

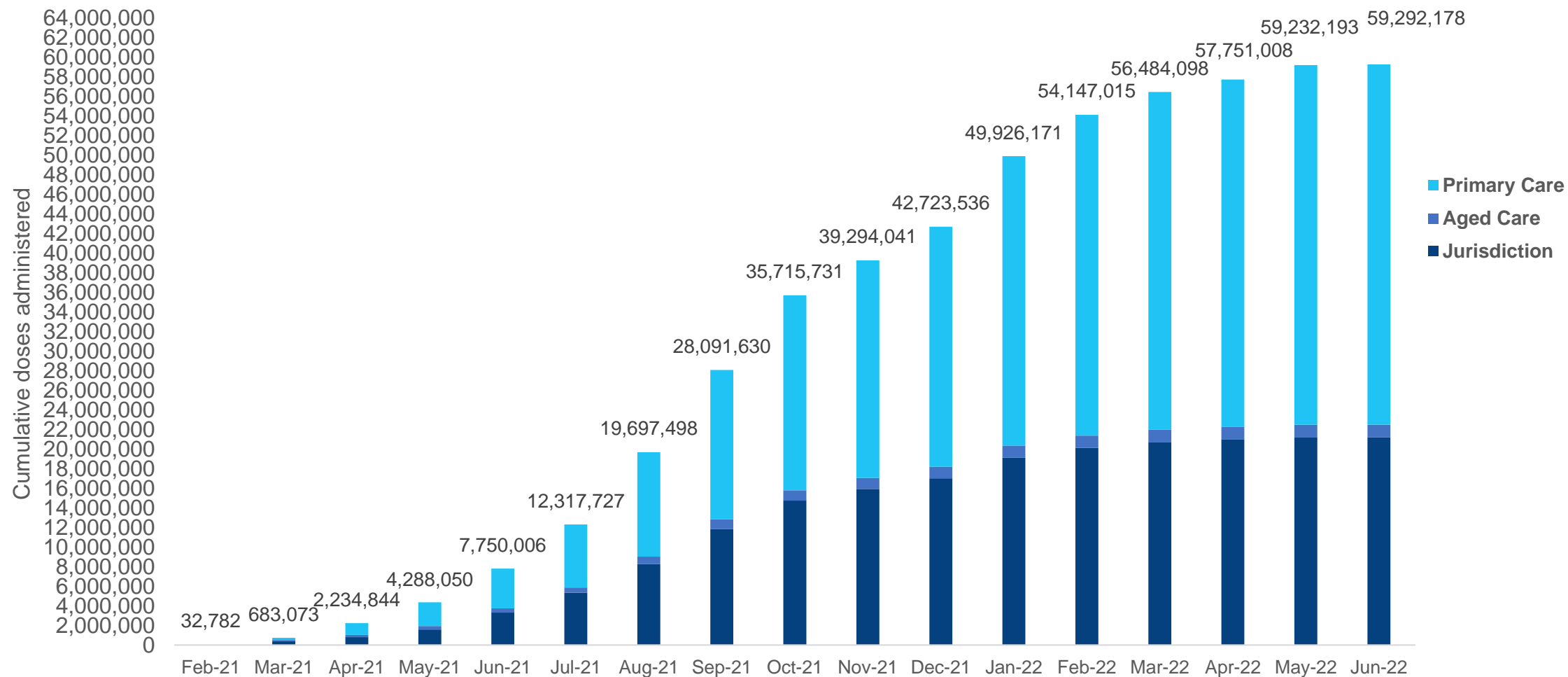
NT
345,481
(+117 daily increase)

*Sourced from the Australian Immunisation Register. Numbers are calculated as difference in daily cumulative reported numbers to allow for historical corrections.

Source: Australian Immunisation Register

Cumulative doses administered by channel

Data as at:
01 Jun 2022



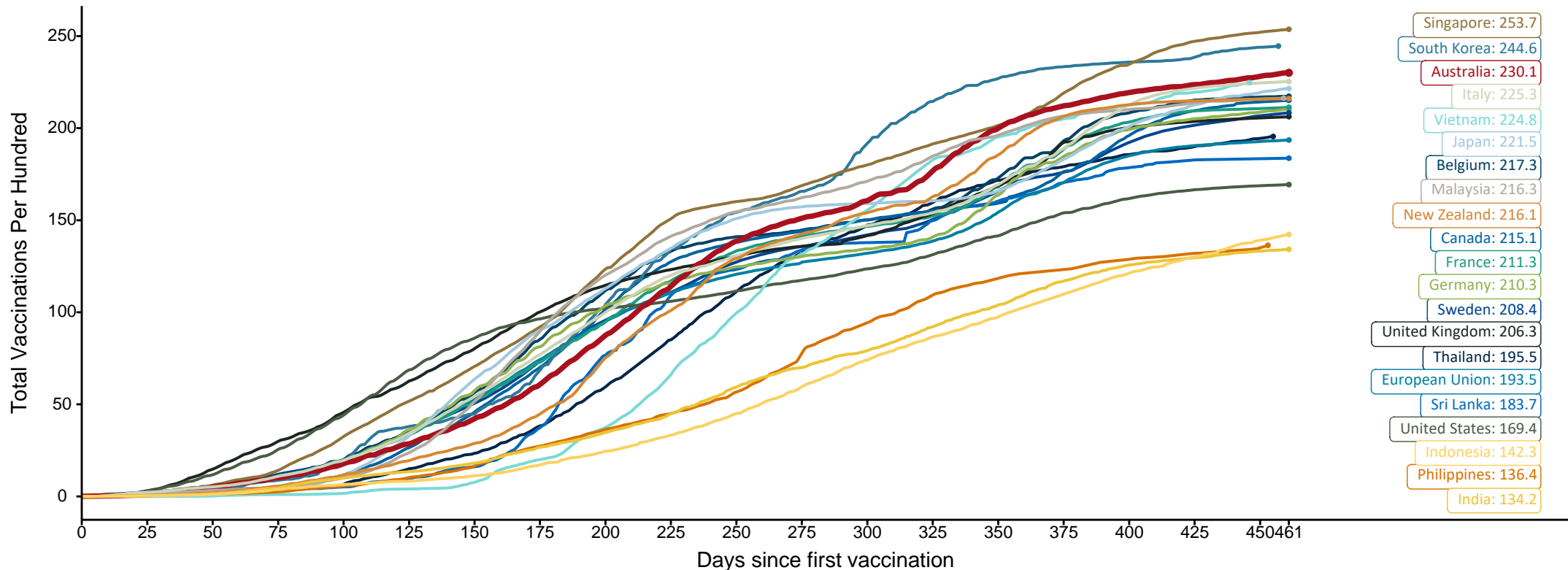
Source: Australian Immunisation Register

Doses at equivalent stages of rollout (Day 461)

Data as at:
29 May 2022
Updated weekly

The x-axis is truncated at the length of Australia's vaccination program. Countries with intermittent reporting have had their doses per 100 imputed to Australia's current stage of rollout. Israel excluded as it is beyond scale of the graph

Cumulative doses administered (29 May): **59,119,148**



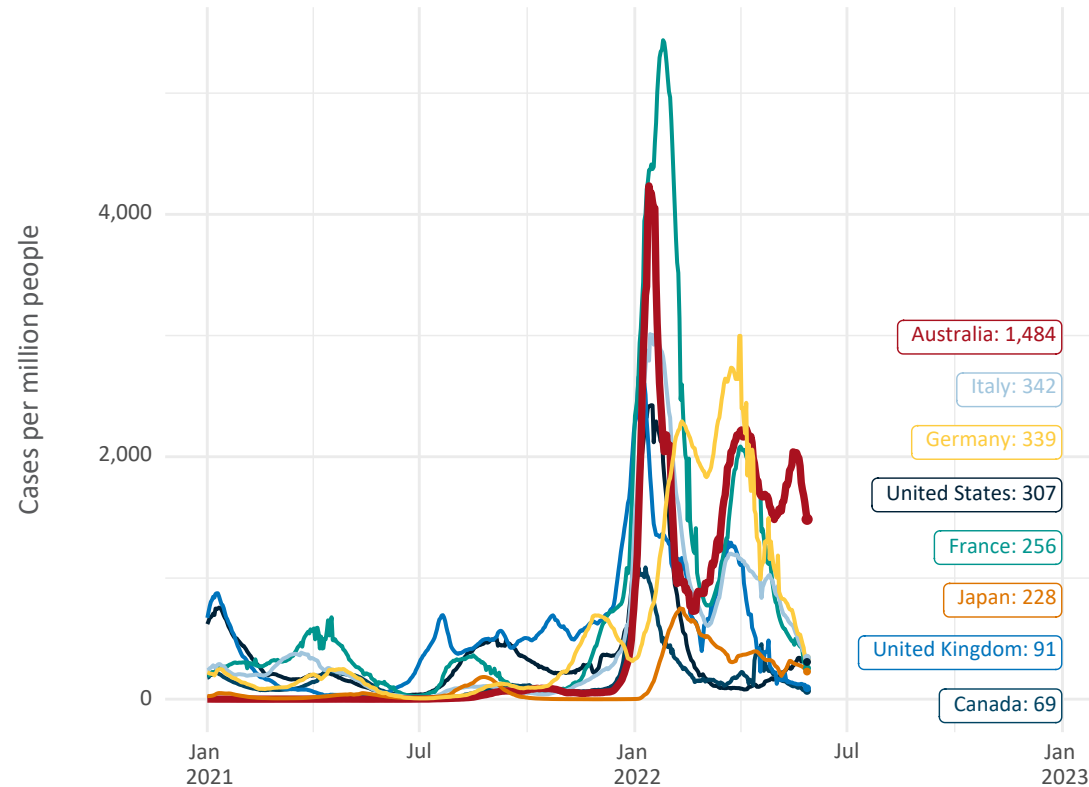
Note: From 11 January 2022, data for Australia includes all doses administered to people 5 and over. Prior to 11 January, data was for 12 and over.
Source: Department of Health (Australia), Our World in Data (international)
Latest data: 29 May

International data – COVID-19

Data as at:
29 May 2022
Updated weekly

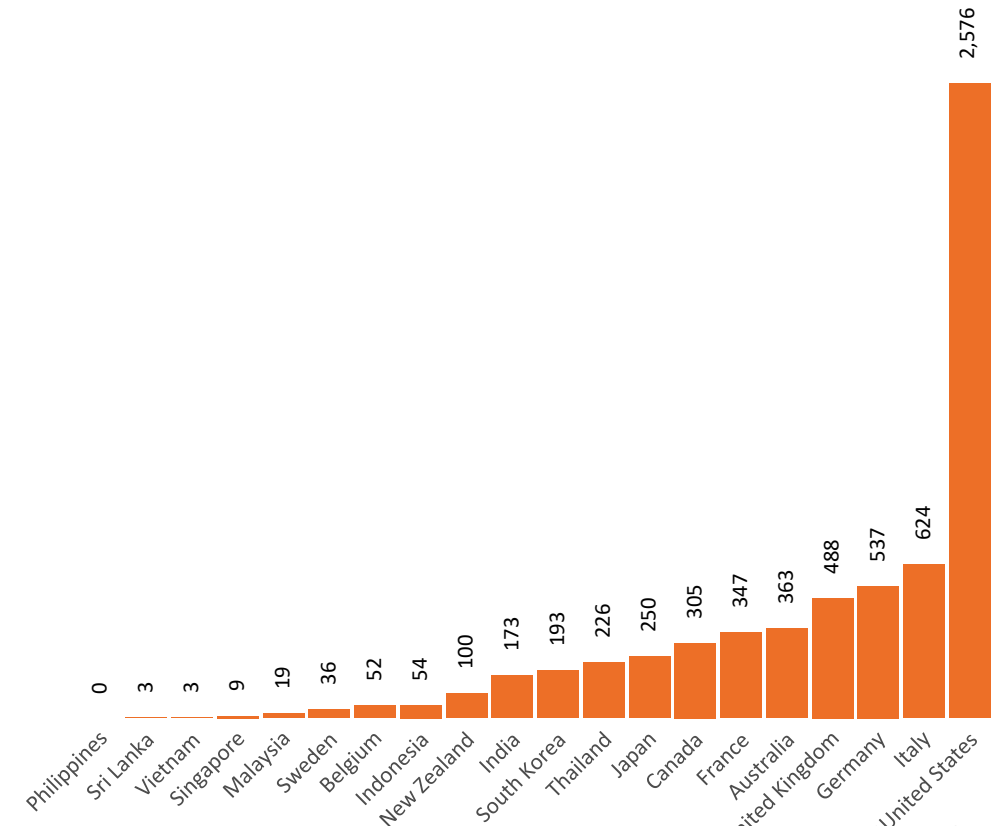
Australia's COVID-19
Vaccine Roadmap

New daily cases per million since 2021, Australia and G7 countries
Smoothed - 7 day average



Source: OWID
Data downloaded: 30 May 2022 10:42
Latest data: 28 May 2022

COVID-19 deaths in past 7 days - Australia and select countries



Source: OWID
Data downloaded: 30 May 2022 10:42
Latest data: 28 May 2022