



**Australian Government**  
**Operation COVID Shield**

# COVID-19 Vaccine Roll-out

19 June 2022

Data as at:  
18 Jun 2022

# Total vaccine doses



**59,932,780** total vaccine doses administered nationally as at 18 June

**+14,842** recorded in the last 24 hours



**20,095,616**

people have had at least one dose

**>95%**

of people over the age of 16 have had at least one dose



**19,760,004**

people are fully vaccinated

**>95%**

of people over the age of 16 are fully vaccinated



**13,823,467**

people over the age of 16 who have received three or more doses

**NSW**  
**18,589,066**  
(+4,765 daily increase)

**VIC**  
**15,729,415**  
(+3,829 daily increase)

**QLD**  
**11,333,379**  
(+1,885 daily increase)

**WA**  
**6,593,809**  
(+1,648 daily increase)

**TAS**  
**1,358,354**  
(+730 daily increase)

**SA**  
**4,165,287**  
(+1,353 daily increase)

**ACT**  
**1,569,970**  
(+547 daily increase)

**NT**  
**593,500**  
(+85 daily increase)

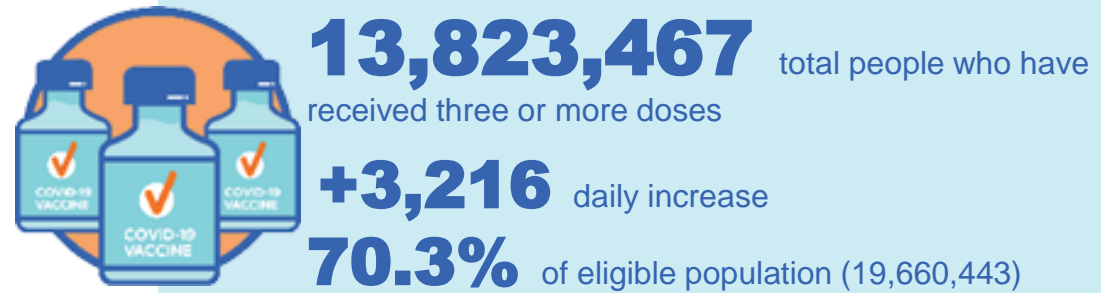
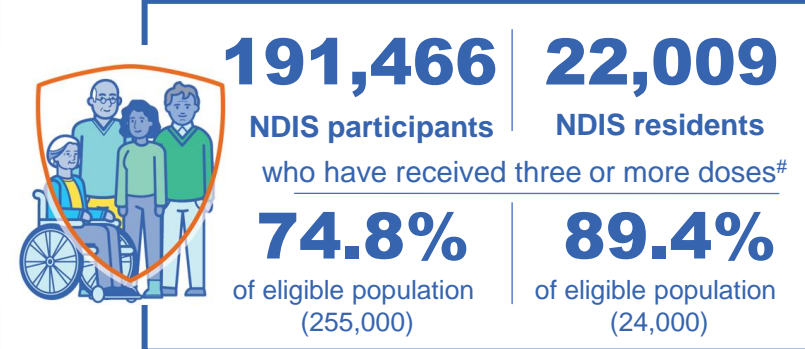
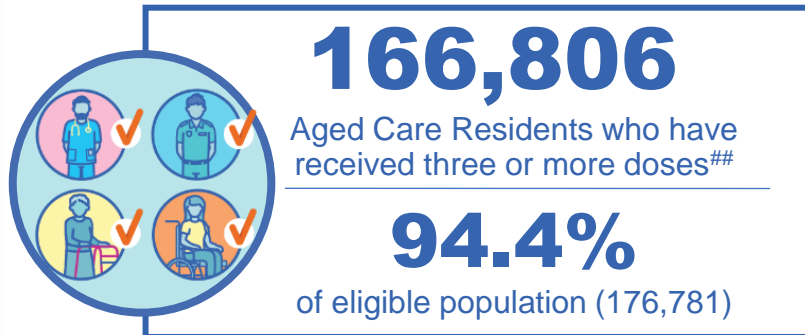
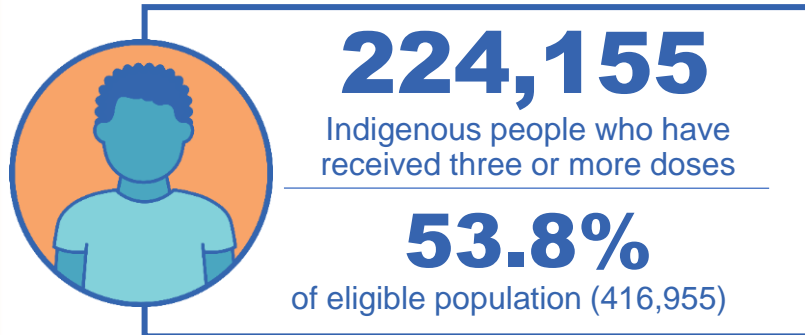
\*Administration state breakdown indicates state in which a vaccine was administered

\*\*Overall dose count includes instances of more than three doses per person in a small number of cases.

Source: Australian Immunisation Register

# Booster Vaccinations

Data as at:  
18 Jun 2022



	Number of People	Daily Increase	% of Eligible
NSW	4,217,105	1,039	67.8%
VIC	3,687,590	869	72.6%
QLD	2,394,261	483	63.3%
WA	1,697,501	307	82.9%
SA	987,340	383	73.8%
TAS	316,047	99	72.8%
ACT	273,144	53	78.8%
NT	131,035	32	78.0%

\*People may belong to multiple groups and could be represented in the above breakdowns multiple times.  
# NDIS participants data as at 14 June 2022. ## Aged Care Residents data as at 17 June 2022.

Source: Australian Immunisation Register

**119,444** doses administered to persons residing in other territories or with missing residential information

# Winter / Fourth Doses

Data as at:  
18 Jun 2022



**2,084,872** total people (16+) who have received four or more doses

**+9,185** daily increase

**1,846,597**  
People aged 65+ who have received four or more doses

---

**54.5%**  
of eligible population (3,391,018)

	Number of People 16+	Daily Increase
ACT	41,129	201
NSW	672,850	2,900
NT	9,052	22
QLD	396,252	1,195
SA	168,126	741
TAS	57,970	578
VIC	523,223	2,409
WA	206,103	1,113

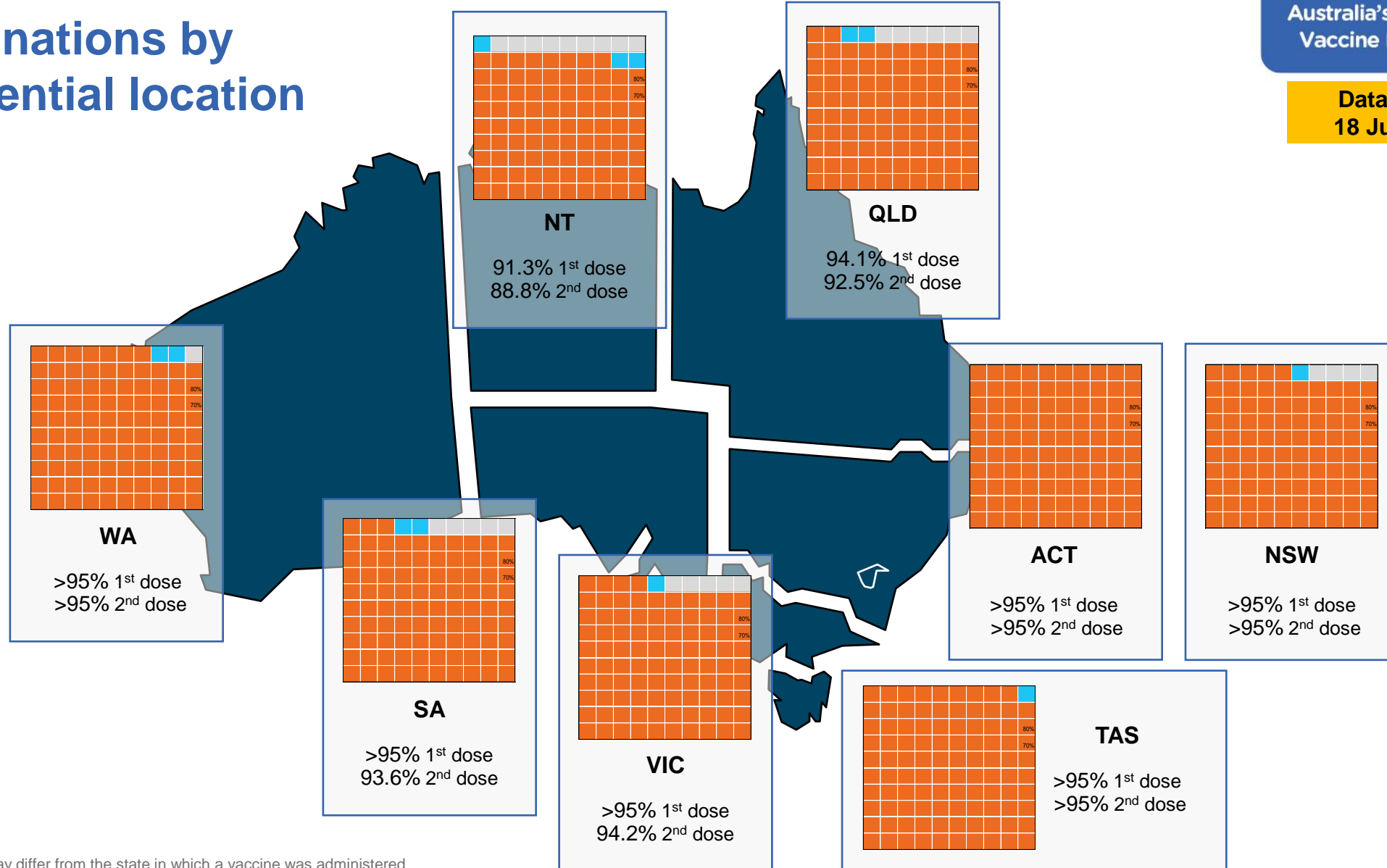
**10,167** doses administered to persons residing in other territories or with missing residential information

\*People become eligible for a winter booster four months after their third dose.

Source: Australian Immunisation Register

Data as at:  
18 Jun 2022

# Vaccinations by residential location



\*Residential state may differ from the state in which a vaccine was administered

# Commonwealth and Jurisdiction vaccine doses administered

Data as at:  
18 Jun 2022



**59,932,780** total vaccine doses administered nationally as at 18 June

**+ 14,842** recorded in the last 24 hours

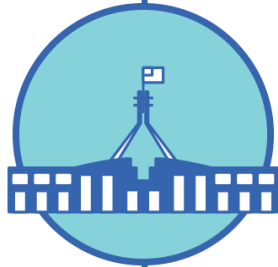


**21,268,726**

doses administered by state and territory facilities

**+ 3,024**

recorded in the last 24 hours



**38,664,054**

doses administered by commonwealth facilities

**+ 11,818**

recorded in the last 24 hours

**37,351,422** total vaccine doses administered in primary care settings

**1,312,632** total vaccine doses administered in aged care and disability settings

NSW	Jurisdictions	Commonwealth
Cumulative	5,137,910	13,451,156
Daily increase	688	4,077

VIC	Jurisdictions	Commonwealth
Cumulative	6,124,861	9,604,554
Daily increase	800	3,029

QLD	Jurisdictions	Commonwealth
Cumulative	3,859,653	7,473,726
Daily increase	187	1,698

WA	Jurisdictions	Commonwealth
Cumulative	2,527,997	4,065,812
Daily increase	418	1,230

TAS	Jurisdictions	Commonwealth
Cumulative	627,506	730,848
Daily increase	215	515

SA	Jurisdictions	Commonwealth
Cumulative	1,840,073	2,325,214
Daily increase	479	874

ACT	Jurisdictions	Commonwealth
Cumulative	803,864	766,106
Daily increase	184	363

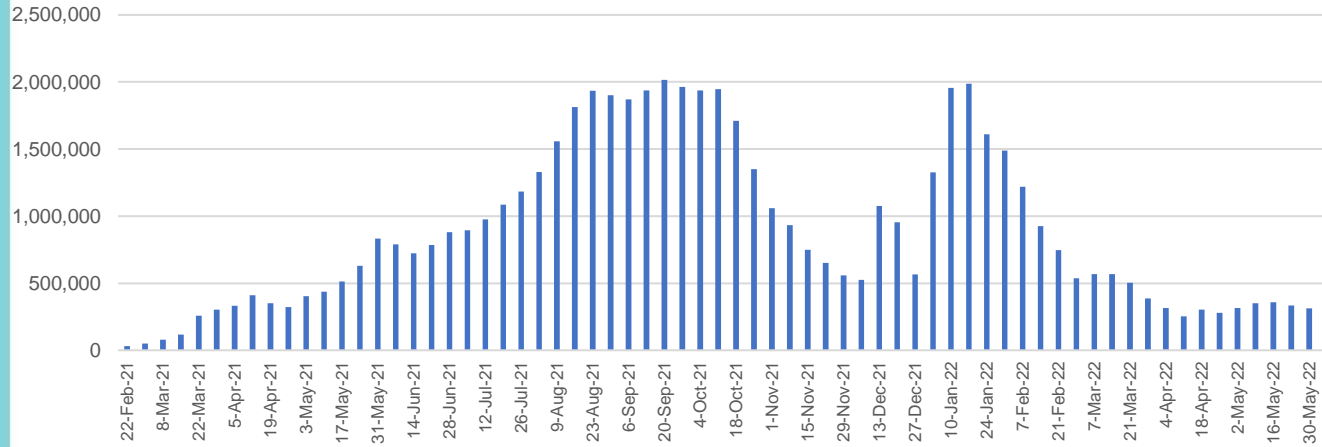
NT	Jurisdictions	Commonwealth
Cumulative	346,862	246,638
Daily increase	53	32

# Vaccine milestone charts

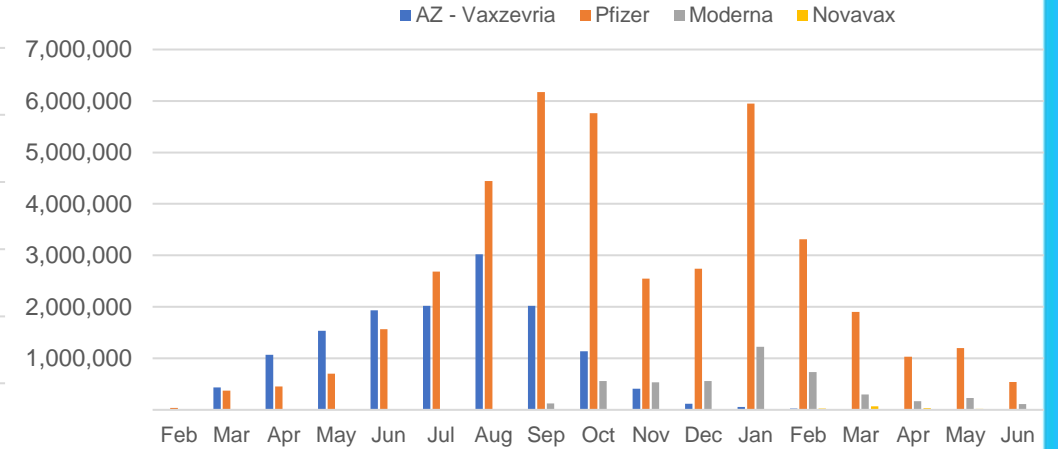
Data as at:  
18 Jun 2022

Australia's COVID-19  
Vaccine Roadmap

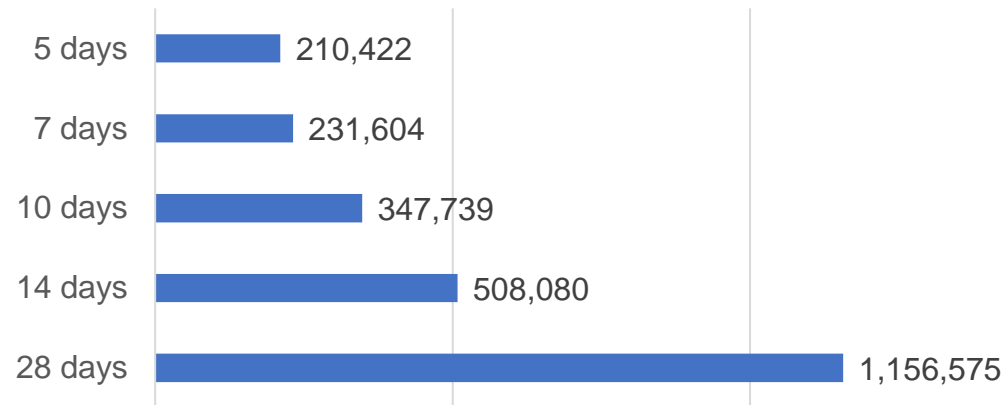
Doses Administered by Week



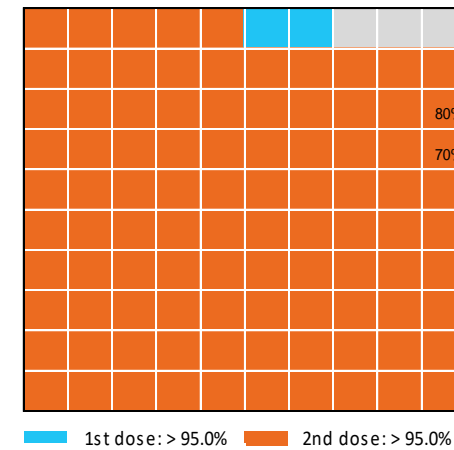
Doses by administration month and vaccine type



Doses Reported



Eligible population percentage coverage



\*Each square represents 1% of the national population. Squares are filled as milestones are achieved.

\*Sourced from the Australian Immunisation Register.

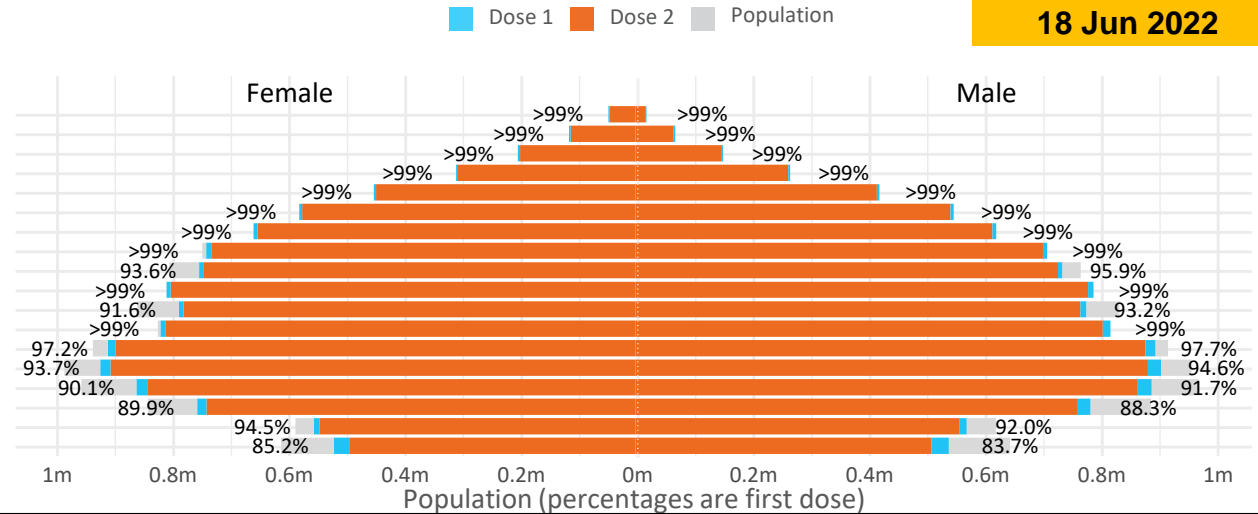
# Doses by age and sex

First and second doses by age and sex

	16+	50+	12-15	5-11
Dose 1	97.46% (20,095,616 doses / 20,619,959 people)	>99% (8,916,854 doses / 8,749,703 people)	84.44% (1,050,434 doses / 1,243,990 people)	52.43% (1,193,600 doses / 2,276,638 people)
Dose 2	95.83% (19,760,004 doses / 20,619,959 people)	>99% (8,809,540 doses / 8,749,703 people)	79.93% (994,354 doses / 1,243,990 people)	39.30% (894,744 doses / 2,276,638 people)

Data as at:  
18 Jun 2022

Age	Dose 1	Dose 2
95+	65,168 (>99%)	61,731 (>99%)
90-94	181,382 (>99%)	175,886 (>99%)
85-89	350,267 (>99%)	343,488 (>99%)
80-84	571,063 (>99%)	563,901 (>99%)
75-79	863,574 (>99%)	855,153 (>99%)
70-74	1,118,720 (>99%)	1,107,412 (>99%)
65-69	1,269,853 (>99%)	1,255,169 (>99%)
60-64	1,437,363 (>99%)	1,420,978 (98.9%)
55-59	1,475,565 (94.9%)	1,458,881 (93.8%)
50-54	1,583,899 (>99%)	1,566,941 (>99%)
45-49	1,550,936 (92.5%)	1,532,571 (91.4%)
40-44	1,624,676 (>99%)	1,600,660 (98.8%)
35-39	1,793,271 (97.7%)	1,761,079 (96.0%)
30-34	1,819,118 (94.6%)	1,777,204 (92.4%)
25-29	1,743,523 (91.4%)	1,695,747 (88.9%)
20-24	1,531,776 (89.5%)	1,491,715 (87.1%)
16-19	1,115,462 (93.3%)	1,091,488 (91.3%)
12-15	1,050,434 (84.4%)	994,354 (79.9%)



	AUS	ACT	NSW	NT	QLD	SA	TAS	VIC	WA
16 and over - dose 1	20,095,616	353,189	6,338,070	173,919	3,869,630	1,377,813	445,722	5,171,146	2,098,745
16 and over - dose 2	19,760,004	347,477	6,240,342	169,253	3,805,907	1,348,558	436,731	5,093,049	2,067,657
16 and over - population	20,619,959*	344,037	6,565,651	190,571	4,112,707	1,440,400	440,172	5,407,574	2,114,978
16 and over % with dose 1	97.46%	>99%	96.53%	91.26%	94.09%	95.65%	>99%	95.63%	>99%
16 and over % with dose 2	95.83%	>99%	95.05%	88.81%	92.54%	93.62%	>99%	94.18%	97.76%
5 to 11 - dose 1	1,193,600	31,818	356,425	13,171	206,723	83,774	28,484	324,949	140,531
5 to 11 - dose 2	894,744	27,220	273,209	8,740	149,015	62,870	22,998	244,527	101,514
5 to 11 - population	2,276,638	39,789	716,460	24,750	478,731	148,816	45,033	578,499	244,154
5 to 11 % with dose 1	52.43%	79.97%	49.75%	53.22%	43.18%	56.29%	63.25%	56.17%	57.56%
5 to 11 % with dose 2	39.30%	68.41%	38.13%	35.31%	31.13%	42.25%	51.07%	42.27%	41.58%
12 to 15 - dose 1	1,050,434	20,108	323,011	10,762	205,834	68,225	22,861	274,530	115,593
12 to 15 - dose 2	994,354	19,567	308,585	9,713	192,314	64,471	21,735	262,690	107,004
12 to 15 - population	1,243,990	19,693	390,330	13,060	270,146	82,747	26,308	308,611	132,869
12 to 15 % with dose 1	84.44%	>99%	82.75%	82.40%	76.19%	82.45%	86.90%	88.96%	87.00%
12 to 15 % with dose 2	79.93%	>99%	79.06%	74.37%	71.19%	77.91%	82.62%	85.12%	80.53%

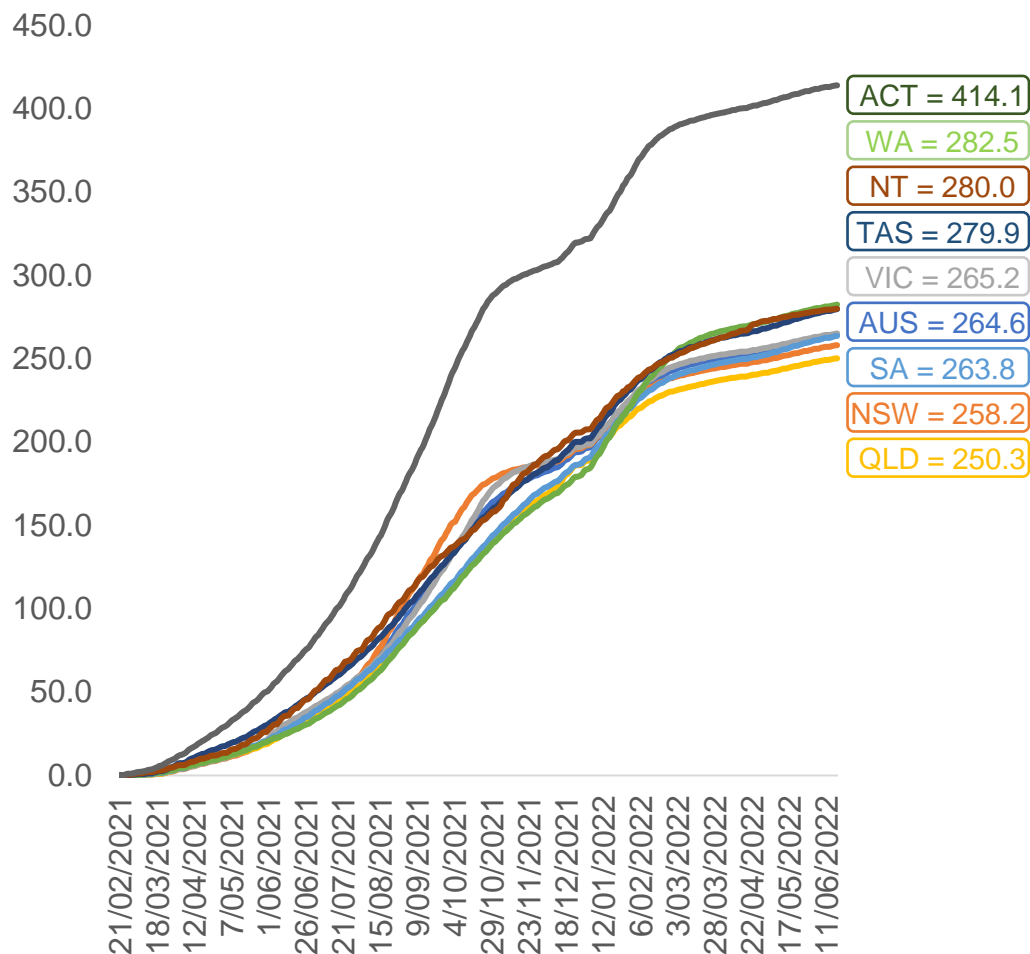
\*National population will not equal sum of listed jurisdictions due to a small number of people counted in national population residing in some 'other' territories. Sum of state doses will not add to national total as some records are unable to be geocoded to a State or Territory.  
Doses sourced from Australian Immunisation Register, population from ABS ERP June 2020



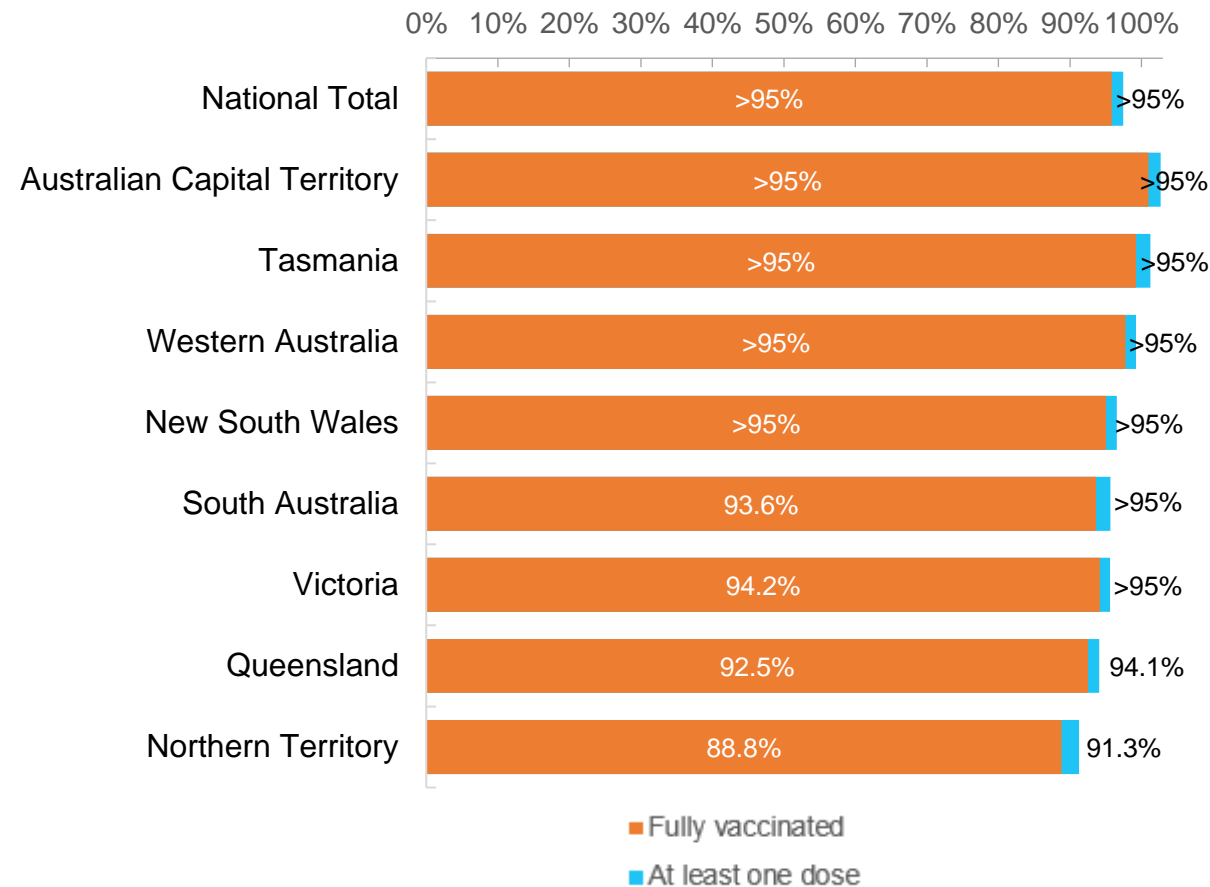
Data as at:  
18 Jun 2022

# Vaccinations by location

Cumulative total doses administered vs eligible state populations\*



First and Second Doses by residential location



\*Not an indication of percentage vaccinated, numbers will exceed 100 due to multiple doses required per person of the population. All doses are included for those aged 12 and above, and are based on vaccination provider location.

# Aboriginal and Torres Strait Islander peoples

## Number of people vaccinated

Data as at:  
14 Jun 2022  
Updated weekly

Australia's COVID-19  
Vaccine Roadmap



**443,032**

people over the age of 16  
have had at least one dose

**85.0%**

of people over the age of 16  
have had at least one dose



**424,557**

people over the age of 16  
are fully vaccinated

**81.4%**

of people over the age of 16 are  
fully vaccinated



People aged 12 – 15 years

**48,069**

**42,232**

**68.0%**

At least one dose

**59.8%**

Fully vaccinated

### 178 Aboriginal community controlled health services (ACCHS)

0#	50	27	44	12	3	21	21
<b>ACT</b>	<b>NSW</b>	<b>NT</b>	<b>QLD</b>	<b>SA</b>	<b>TAS</b>	<b>VIC</b>	<b>WA</b>

Medicare Address State <sup>##</sup>	Individuals Dose 1	Individuals Dose 1 %	Individuals Dose 2	Individuals Dose 2 %
Australian Capital Territory	4,788	91.7%	4,668	89.4%
New South Wales	136,036	87.3%	132,973	85.4%
Northern Territory	41,436	89.7%	39,465	85.4%
Queensland	116,396	81.8%	111,007	78.0%
South Australia	20,072	80.5%	18,685	75.0%
Tasmania	13,908	88.8%	13,499	86.2%
Victoria	35,657	90.4%	34,887	88.5%
Western Australia	53,565	86.7%	49,846	80.7%
Unknown/Other Territories	21,174	70.2%	19,527	64.7%
<b>Totals</b>	<b>443,032</b>	<b>85.0%</b>	<b>424,557</b>	<b>81.4%</b>

Source: Australian Immunisation Register

\*Identifying as Aboriginal and Torres Strait Islander is optional and the estimated population may be under reported.

\*\*Includes all Aboriginal and Torres Strait Islander peoples who have received a vaccination, not limited to those administered in an ACCHS setting

#ACCHS in the ACT are currently operating as a Commonwealth Vaccine Clinics so not included to avoid double counting

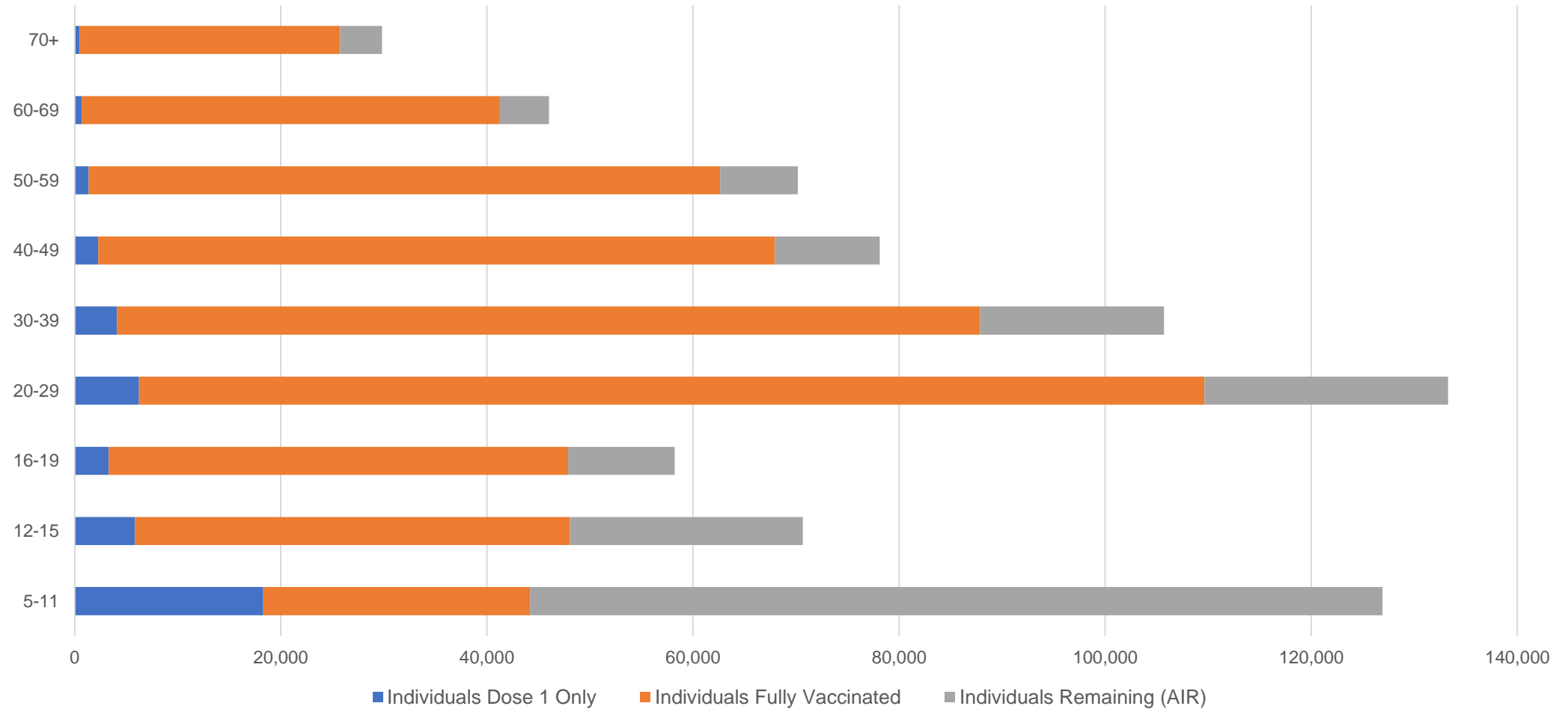
##The above table includes all identified Aboriginal and Torres Strait Islander people who are aged 16 and above by their state of residence.

# Aboriginal and Torres Strait Islander peoples

## Number of people vaccinated by age

Data as at:  
14 Jun 2022  
Updated weekly

Australia's COVID-19  
Vaccine Roadmap



Source: Australian Immunisation Register

Data as at:  
18 Jun 2022

Australia's COVID-19  
Vaccine Roadmap

# Commonwealth primary care



## Primary care vaccine administration sites

<b>5,708</b>	<b>128</b>	<b>178</b>	<b>3,610</b>
GPs	CVCs	ACCHS	Pharmacies

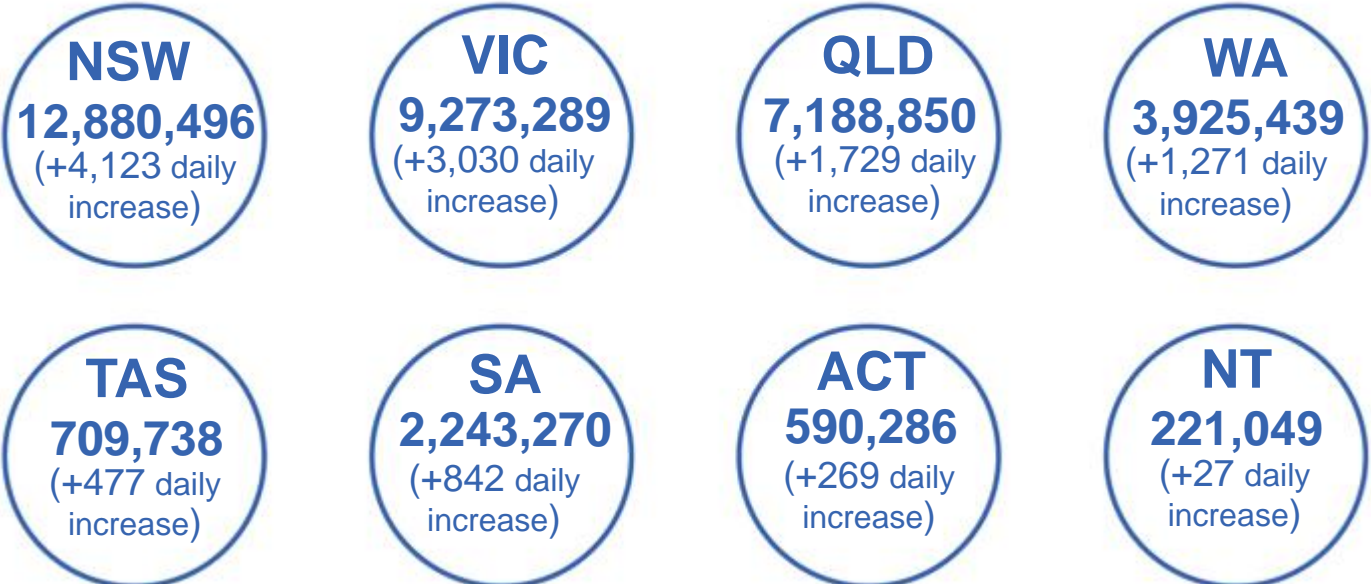


**37,351,422** total vaccine doses administered  
primary care settings as at 18 June

**+ 11,642** recorded in the last 24 hours

## Primary care vaccinations by provider type

	Doses administered	Daily increase	7 day increase
<b>General Practice*</b> includes other Commonwealth	29,879,558	7,979	143,456
<b>Pharmacy</b>	7,471,864	3,663	60,644



**319,005** doses administered to persons residing in other territories or with missing residential information

\*General practice includes Commonwealth Vaccination Clinics, Aboriginal Community Health Centres, Royal Flying Doctor Service and other Commonwealth vaccination facilities

Source: Australian Immunisation Register

Data as at:  
18 Jun 2022

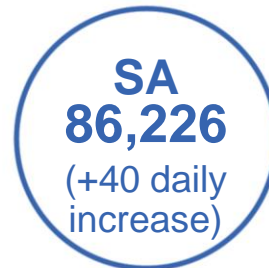
# Commonwealth aged care and disability doses administered



**1,312,632** (+ 176 last 24 hours)

Total vaccine doses administered in aged care and disability facilities as at 18 June

Number of doses administered as part of the Commonwealth aged and disability care rollout



**39,011**

doses administered to persons residing in other territories or with missing residential information

Source: Australian Immunisation Register

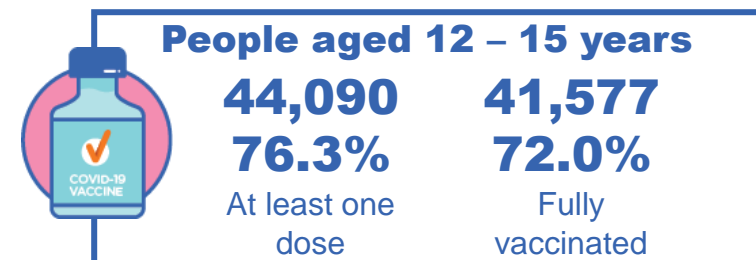
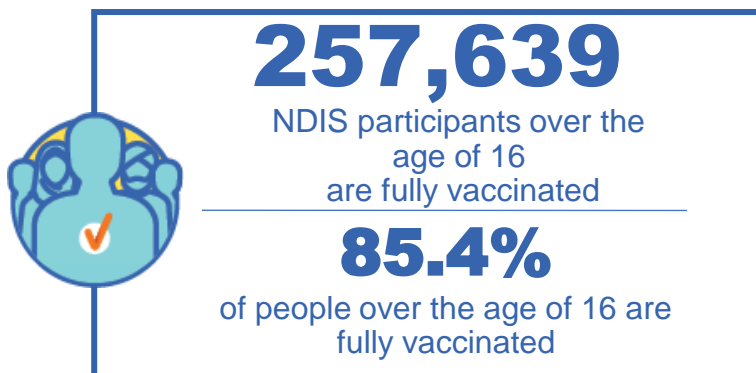
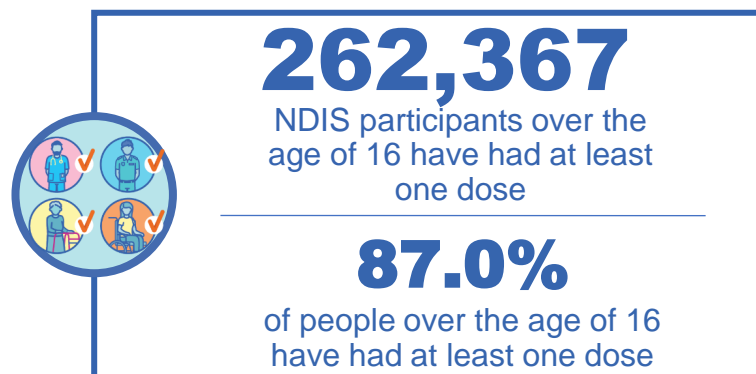
\*Sourced from the Australian Immunisation Register. Includes all persons vaccinated at participating residential aged care, disability and related industry settings.

\*\*State level breakdown indicates the residential location and may not align to the state in which the vaccination occurred.

# National Disability Insurance Scheme (NDIS) reported vaccinations

Data as at:  
16 June 2022  
Updated weekly

Australia's COVID-19  
Vaccine Roadmap



## NDIS participant vaccinations

	People aged 16+ with at least one dose	People aged 16+ fully vaccinated	% People aged 16+ with at least one dose	% People aged 16+ fully vaccinated
ACT	4,940	4,877	<b>89.0%</b>	<b>87.9%</b>
NSW	80,332	79,051	<b>87.5%</b>	<b>86.1%</b>
NT	2,281	2,213	<b>78.1%</b>	<b>75.8%</b>
QLD	52,006	51,023	<b>85.3%</b>	<b>83.7%</b>
SA	21,490	20,986	<b>84.8%</b>	<b>82.8%</b>
TAS	6,558	6,403	<b>87.3%</b>	<b>85.2%</b>
VIC	69,685	68,523	<b>88.1%</b>	<b>86.7%</b>
WA	25,075	24,563	<b>88.3%</b>	<b>86.5%</b>
<b>National</b>	<b>262,367</b>	<b>257,639</b>	<b>87.0%</b>	<b>85.4%</b>

Source: Linkage between National Disability Insurance Agency data and the Australian Immunisation Register. Total NDIS participant numbers as at 30 May. Australian Immunisation Register data as at 15 June. Includes all participants regardless of residence type.

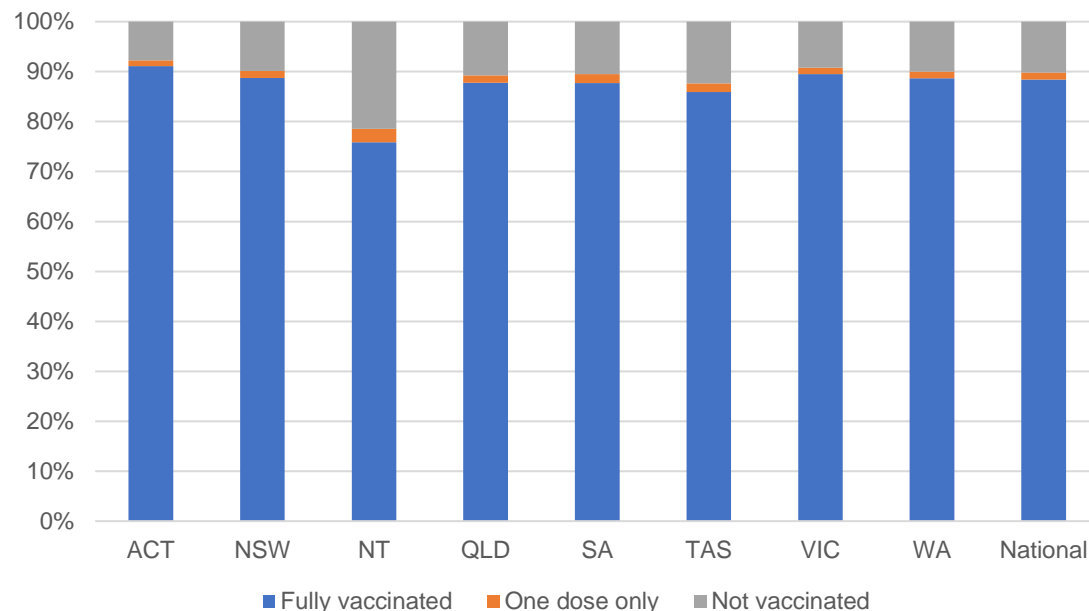
# National Disability Insurance Scheme (NDIS) reported vaccinations

Data as at:  
16 June 2022  
Updated weekly

Australia's COVID-19  
Vaccine Roadmap

NATIONAL	Total people with at least one dose	People fully vaccinated	Total number of individuals in cohort	% People with at least one dose	% People fully vaccinated
NDIS participants living in disability accommodation	21,116	20,787	23,469	90.0%	88.6%

## NDIS participants in disability and aged care accommodation



Source: Linkage between National Disability Insurance Agency data and the Australian Immunisation Register. Includes participants residing in disability accommodation only.

Source: Total NDIS participant numbers as at 30 May. Participant data as at 14 June. Australian Immunisation Register data as at 15 June. Worker data as at 15 June.

## NDIS workforce vaccinations

	NDIS workers with at least one dose	NDIS workers fully vaccinated	% NDIS workers with at least one dose	% NDIS workers fully vaccinated
NSW	127,155	121,812	98.2%	94.1%
VIC	117,930	114,648	98.4%	95.6%
QLD	71,443	70,577	97.8%	96.7%
WA	34,538	33,109	98.8%	94.7%
SA	35,963	33,926	98.6%	93.0%
TAS	10,800	10,584	99.5%	97.5%
ACT	12,340	12,313	99.8%	99.6%
NT	3,934	3,776	99.6%	95.6%
<b>TOTAL</b>	<b>414,103</b>	<b>400,745</b>	<b>98.4%</b>	<b>95.2%</b>

Source: the NDIS Commission has established a requirement for registered NDIS providers who provide intensive disability support services to report on the vaccination status of workers they employ, or otherwise engage, to deliver NDIS-funded supports and services, and who are required to be vaccinated in accordance with in-force state and territory public health orders. The statistics reflect data reported to the NDIS Commission by registered NDIS providers and should be considered indicative and subject to change

Note: Some registered NDIS providers are yet to report on the vaccination status of their workforce. The NDIS Commission is working with those providers around reporting requirements.

Remaining workers not included include those exempt from vaccination requirements, workers whose vaccination status is not yet verified by the provider (such as workers on leave) and provider reporting anomalies.

# Residential aged care vaccination rollout

Data as at:  
16 June 2022  
Updated weekly

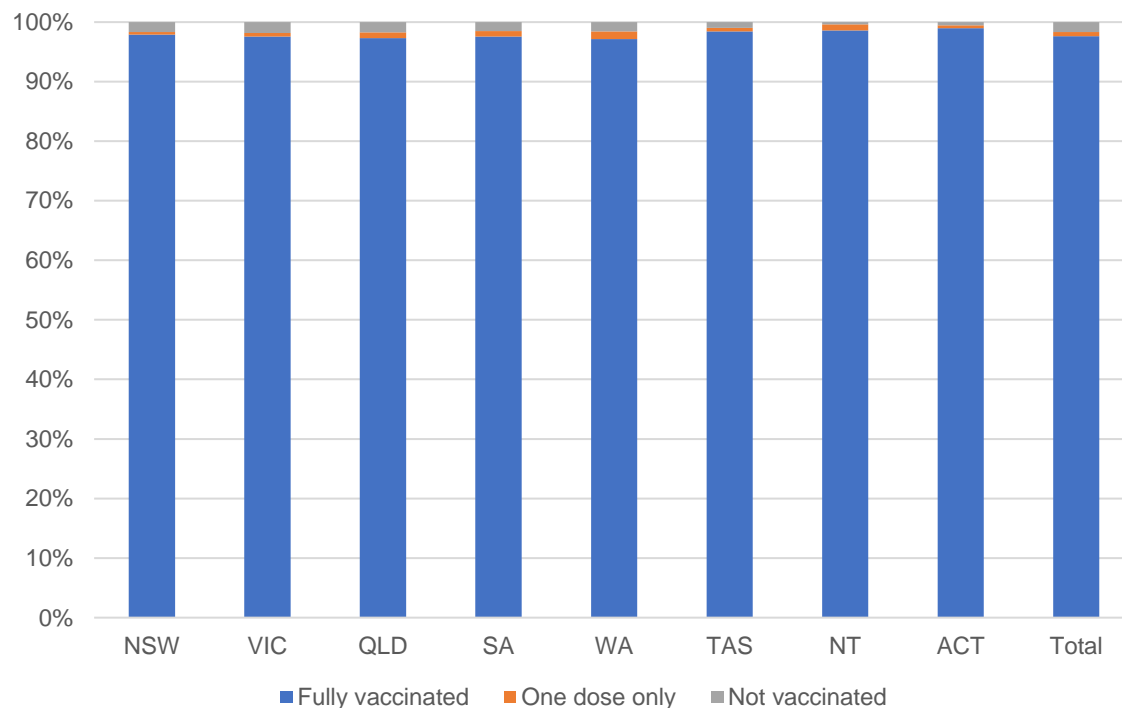
Residential aged care facilities status

**176,781**      **178,054**

People fully vaccinated

People with at least one dose

## Aged care resident vaccinations



## Aged care worker vaccinations

Jurisdictions	Total workers with at least one dose	Workers fully vaccinated	% Workers with at least one dose	% Workers fully vaccinated
NSW	77,698	77,685	99.9%	99.8%
VIC	70,768	70,765	99.5%	99.5%
QLD	48,221	48,216	99.6%	99.6%
SA	27,347	27,337	100.0%	100.0%
WA	24,532	24,527	100.0%	100.0%
TAS	7,647	7,646	100.0%	100.0%
NT	939	939	100.0%	100.0%
ACT	2,920	2,920	100.0%	100.0%
<b>Total</b>	<b>260,072</b>	<b>260,035</b>	<b>99.8%</b>	<b>99.7%</b>

Source: Residential aged care provider self-reported COVID-19 vaccination information

\*Status updates are provided by facilities at least once per week. Reporting is updated Monday to Friday to encompass different facility updates being made on different days.

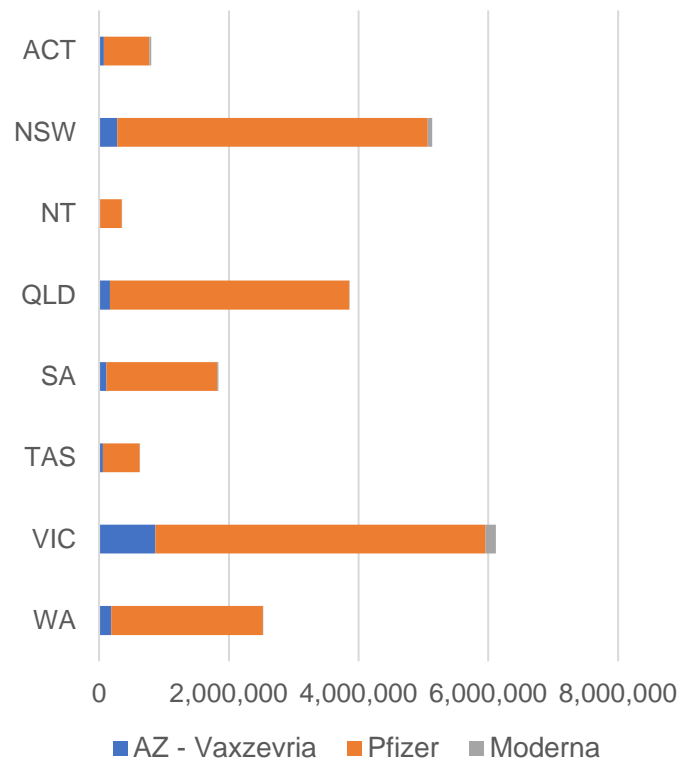
Data is sourced directly from Aged Care Service Providers and is not drawn or closely aligned with data from AIR due to inconsistencies and potential lags in uploading of records.



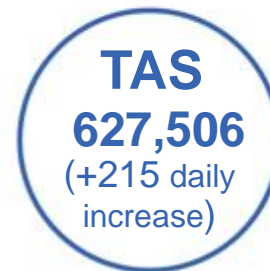
Data as at:  
18 Jun 2022

## Jurisdiction administered

Total vaccine doses administered in State and Territory clinics as at 18 June



**21,268,726** total vaccine doses administered in State and Territory clinics as at 18 June  
 + **3,024** recorded in the last 24 hours  
 + **23,913** recorded in the last 7 days

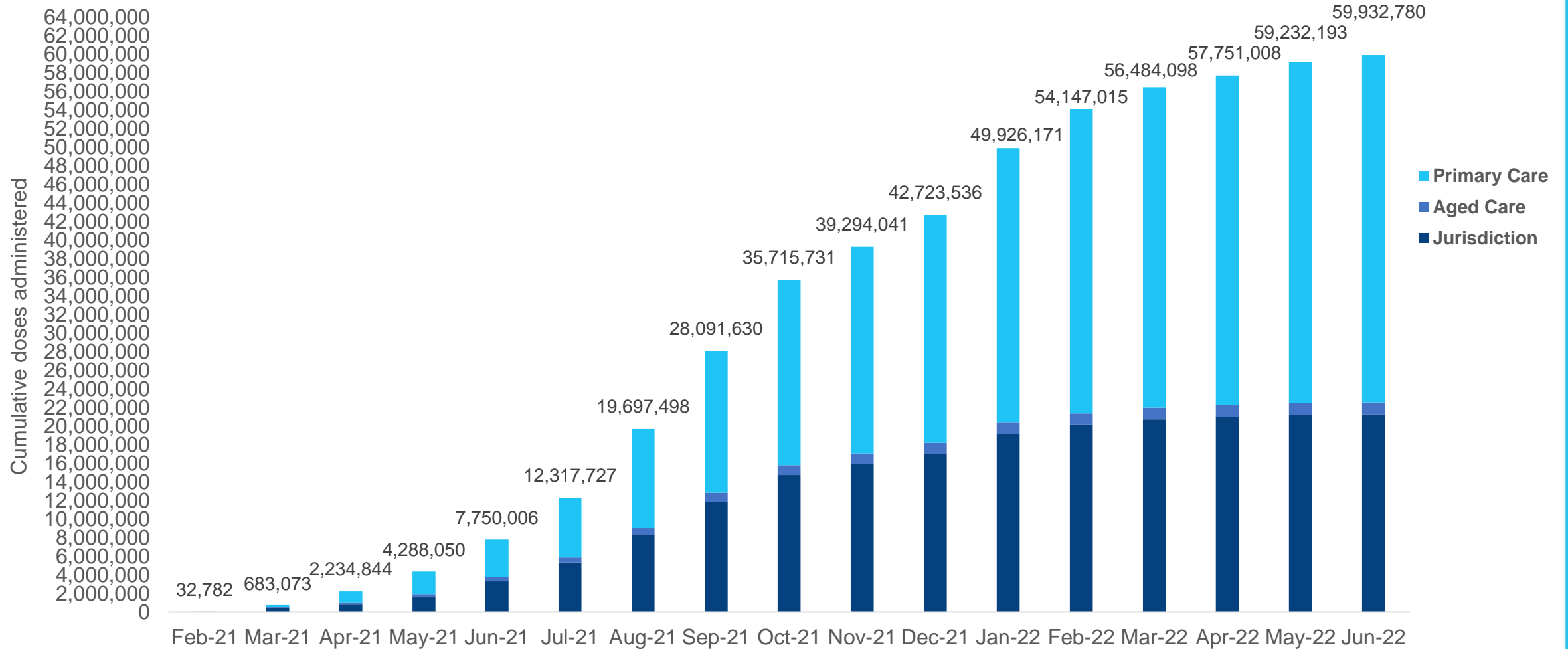


\*Sourced from the Australian Immunisation Register. Numbers are calculated as difference in daily cumulative reported numbers to allow for historical corrections.

Source: Australian Immunisation Register

# Cumulative doses administered by channel

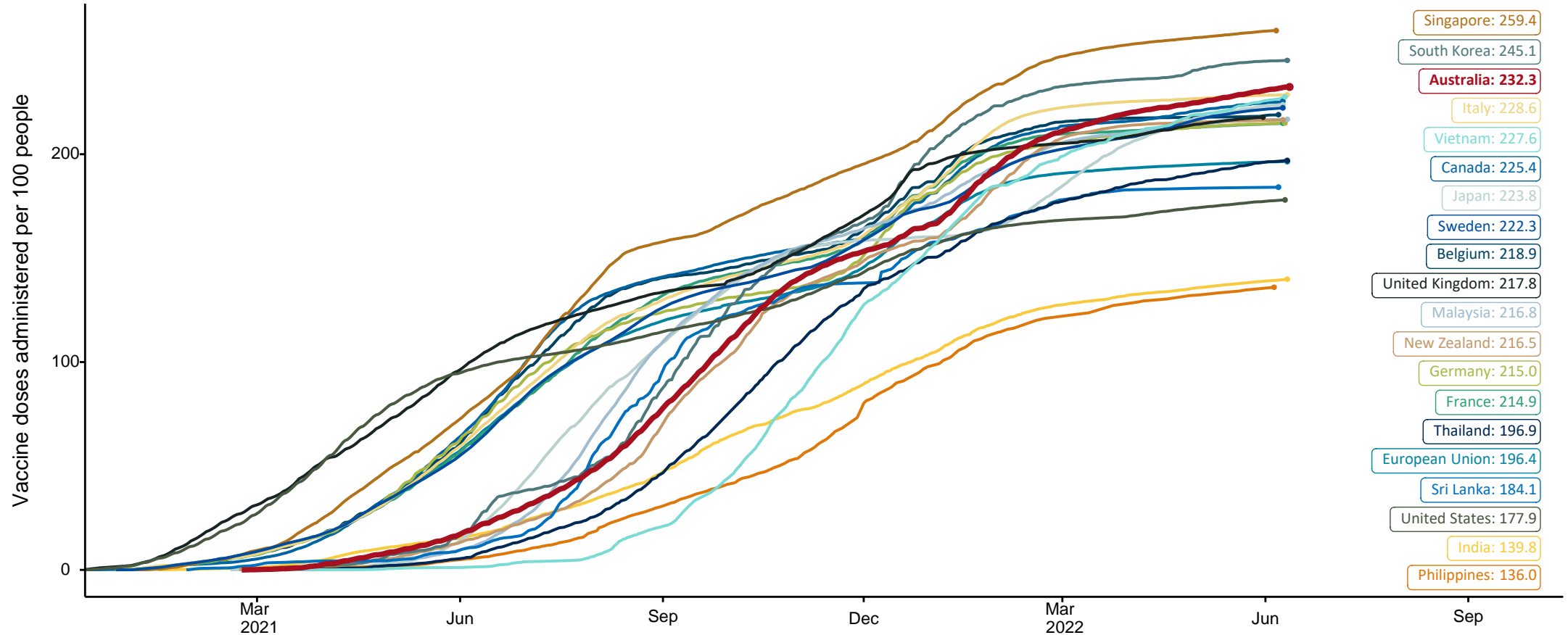
Data as at:  
18 Jun 2022



Source: Australian Immunisation Register

# COVID-19 vaccine doses per 100, Australia and select countries

Data as at:  
12 June 2022  
Updated weekly

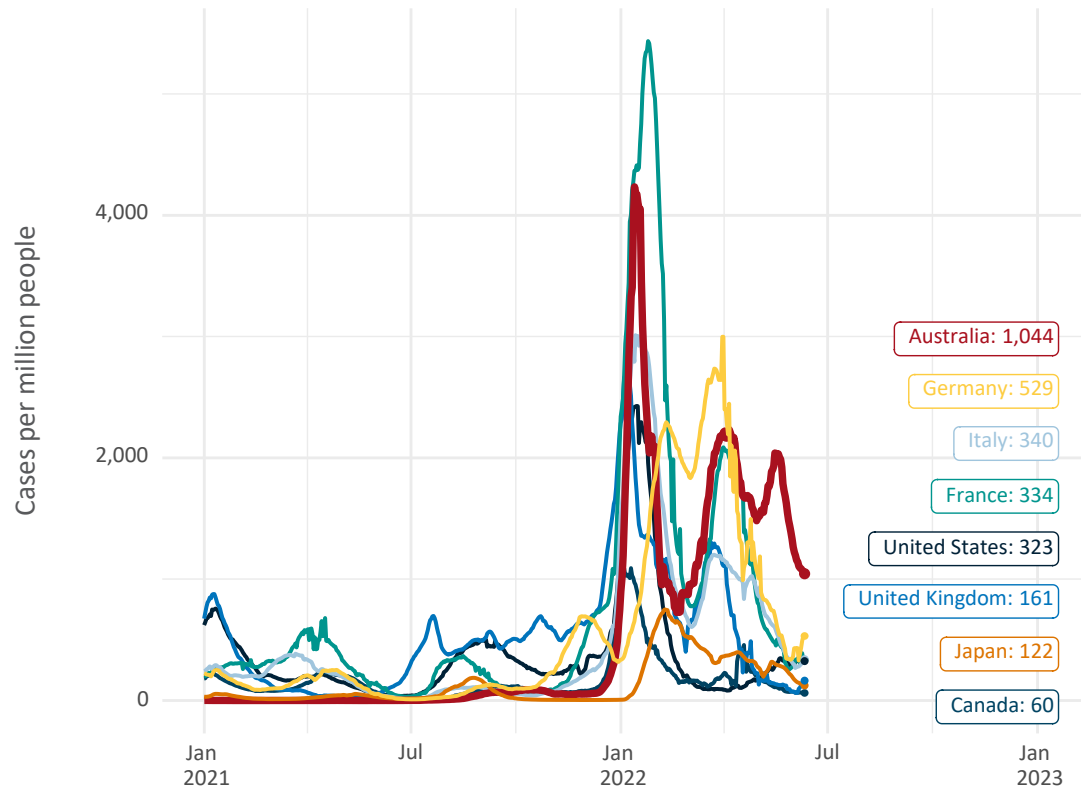


Note: From 11 January 2022, data for Australia includes all doses administered to people 5 and over. Prior to 11 January, data was for 12 and over.  
Source: Department of Health (Australia), Our World in Data (international)  
Latest data: 12 June

Data as at:  
12 June 2022  
Updated weekly

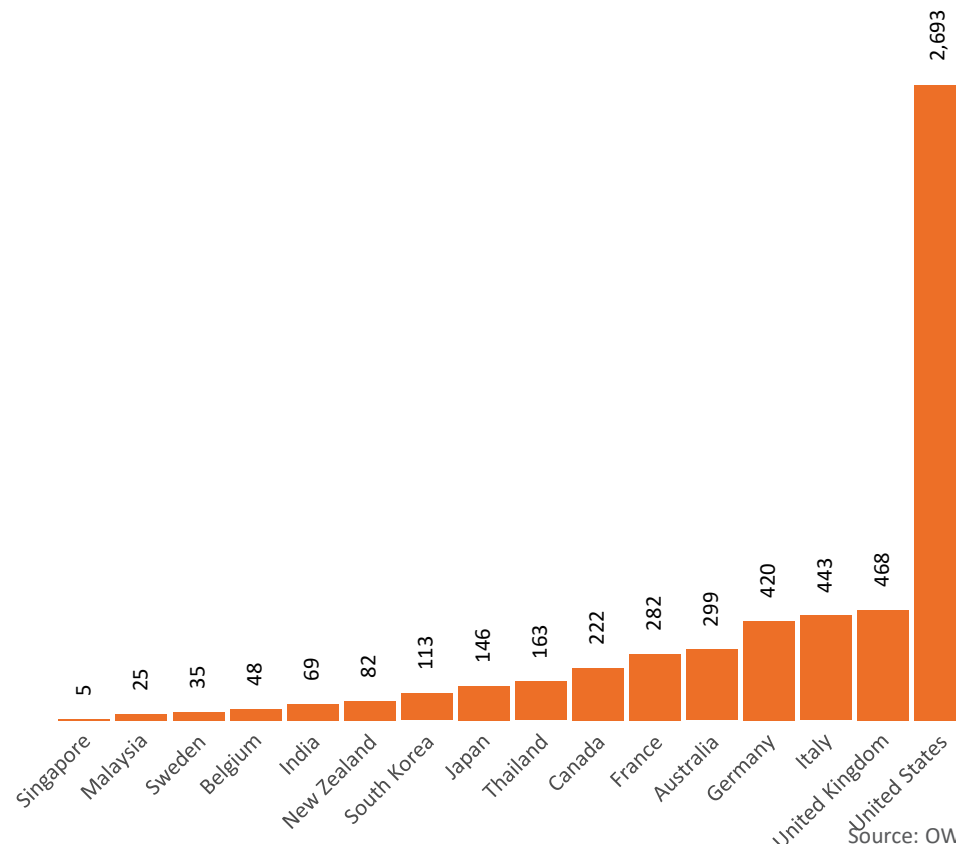
# International data – COVID-19

New daily cases per million since 2021, Australia and G7 countries  
Smoothed - 7 day average



Source: OWID  
Data downloaded: 13 Jun 2022 08:51  
Latest data: 11 Jun 2022

COVID-19 deaths in past 7 days - Australia and select countries



Source: OWID  
Data downloaded: 13 Jun 2022 08:53  
Latest data: 11 Jun 2022