



Australian Government
Operation COVID Shield

COVID-19 Vaccine Roll-out

18 June 2022

Data as at:
17 Jun 2022

Total vaccine doses



59,917,938 total vaccine
doses administered nationally as at 17 June
+44,378 recorded in the last 24 hours



20,094,444

people have had at least one
dose

>95%

of people over the age of 16
have had at least one dose



19,758,939

people are fully vaccinated

>95%

of people over the age of 16 are
fully vaccinated



13,820,251

people over the age of 16
who have received three or
more doses

NSW
18,584,301
(+14,744 daily
increase)

VIC
15,725,586
(+10,852 daily
increase)

QLD
11,331,494
(+7,849 daily
increase)

WA
6,592,161
(+3,961 daily
increase)

TAS
1,357,624
(+1,072 daily
increase)

SA
4,163,934
(+4,014 daily
increase)

ACT
1,569,423
(+1,631 daily
increase)

NT
593,415
(+255 daily
increase)

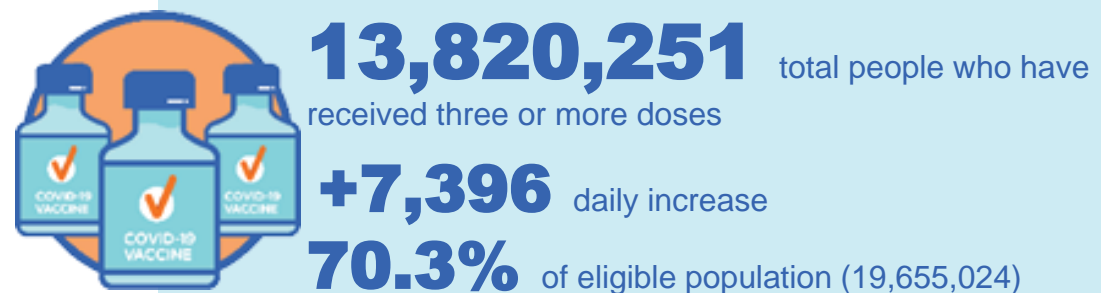
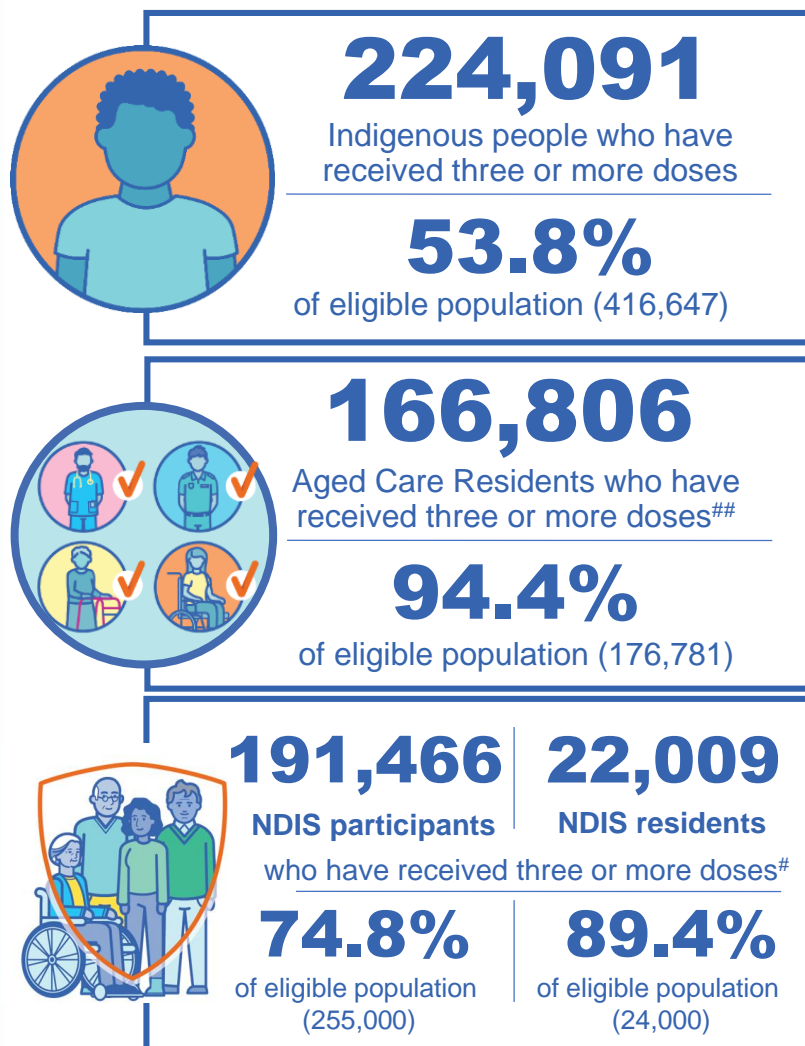
*Administration state breakdown indicates state in which a vaccine was administered

**Overall dose count includes instances of more than three doses per person in a small number of cases.

Source: Australian Immunisation Register

Booster Vaccinations

Data as at:
17 Jun 2022



	Number of People	Daily Increase	% of Eligible
NSW	4,216,066	2,492	67.8%
VIC	3,686,721	1,697	72.6%
QLD	2,393,778	1,302	63.4%
WA	1,697,194	644	83.0%
SA	986,957	718	73.8%
TAS	315,948	180	72.8%
ACT	273,091	116	78.8%
NT	131,003	54	78.0%

*People may belong to multiple groups and could be represented in the above breakdowns multiple times.
NDIS participants data as at 14 June 2022. ## Aged Care Residents data as at 17 June 2022.

Source: Australian Immunisation Register

119,493 doses administered to persons residing in other territories or with missing residential information

Winter / Fourth Doses

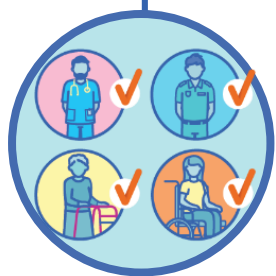
Data as at:
17 Jun 2022

Australia's COVID-19
Vaccine Roadmap



2,075,687 total people (16+) who have received four or more doses

+32,800 daily increase



1,839,271

People aged 65+ who have
received four or more doses

54.6%

of eligible population (3,366,777)

	Number of People 16+	Daily Increase
ACT	40,928	401
NSW	669,950	11,035
NT	9,030	135
QLD	395,057	5,983
SA	167,385	2,997
TAS	57,392	836
VIC	520,814	8,207
WA	204,990	2,993

10,141 doses administered to persons
residing in other territories or with
missing residential information

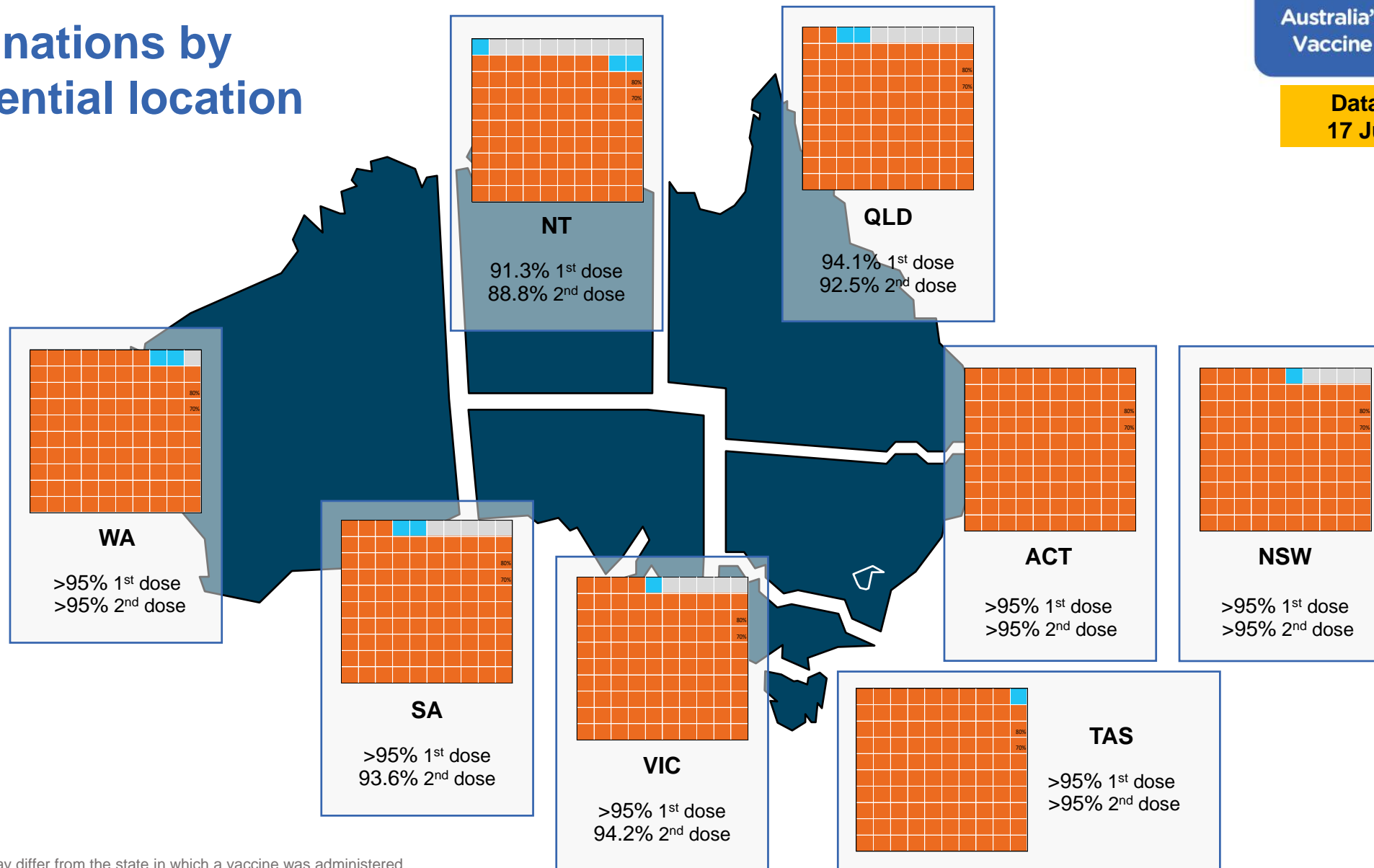
*People become eligible for a winter booster four months after their third dose.

Source: Australian Immunisation Register

Vaccinations by residential location

Australia's COVID-19
Vaccine Roadmap

Data as at:
17 Jun 2022



*Residential state may differ from the state in which a vaccine was administered

Commonwealth and Jurisdiction vaccine doses administered

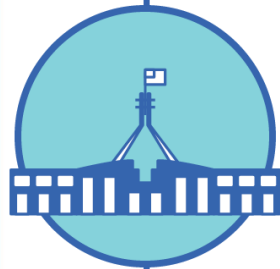
Data as at:
17 Jun 2022



59,917,938 total vaccine
doses administered nationally as at 17 June
+ 44,378 recorded in the last 24 hours



21,265,702
doses administered by state
and territory facilities
+ 4,529
recorded in the last 24 hours



38,652,236
doses administered by
commonwealth facilities
+ 39,849
recorded in the last 24 hours

37,339,780 total vaccine doses
administered in primary care settings
1,312,456 total vaccine doses
administered in aged care and disability
settings

NSW	Jurisdictions	Commonwealth
Cumulative	5,137,222	13,447,079
Daily increase	1,005	13,739

VIC	Jurisdictions	Commonwealth
Cumulative	6,124,061	9,601,525
Daily increase	1,073	9,779

QLD	Jurisdictions	Commonwealth
Cumulative	3,859,466	7,472,028
Daily increase	451	7,398

WA	Jurisdictions	Commonwealth
Cumulative	2,527,579	4,064,582
Daily increase	496	3,465

TAS	Jurisdictions	Commonwealth
Cumulative	627,291	730,333
Daily increase	91	981

SA	Jurisdictions	Commonwealth
Cumulative	1,839,594	2,324,340
Daily increase	781	3,233

ACT	Jurisdictions	Commonwealth
Cumulative	803,680	765,743
Daily increase	581	1,050

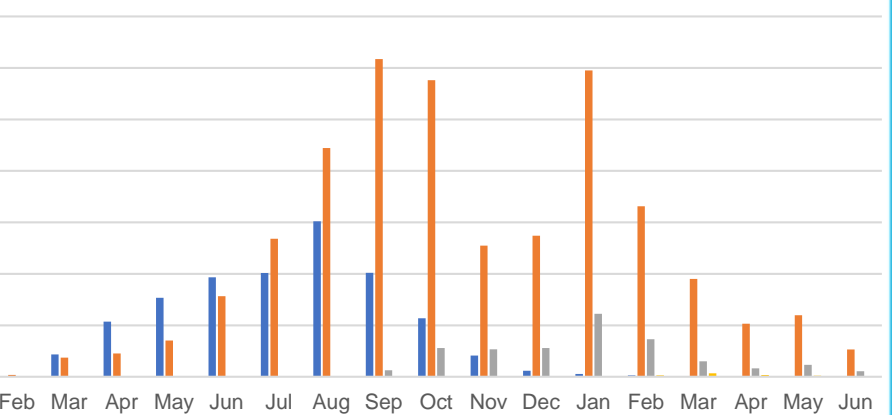
NT	Jurisdictions	Commonwealth
Cumulative	346,809	246,606
Daily increase	51	204

**Data as at:
17 Jun 2022**

Doses Administered by Week



Doses Reported



Orange	Orange	Orange	Orange	Orange	Blue	Blue	Gray	Gray	Gray
--------	--------	--------	--------	--------	------	------	------	------	------

*Each square represents 1% of the national population.
Squares are filled as milestones are achieved.

7

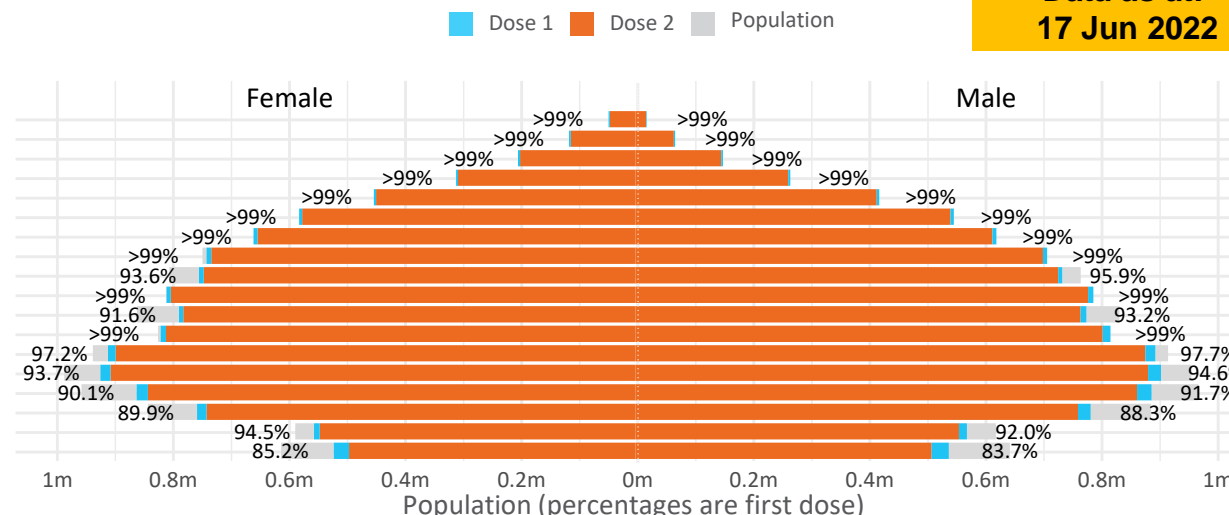
Data as at:
17 Jun 2022

Doses by age and sex

First and second doses by age and sex

	16+	50+	12-15	5-11
Dose 1	97.45% (20,094,444 doses / 20,619,959 people)	>99% (8,915,865 doses / 8,749,703 people)	84.47% (1,050,756 doses / 1,243,990 people)	52.43% (1,193,702 doses / 2,276,638 people)
Dose 2	95.82% (19,758,939 doses / 20,619,959 people)	>99% (8,808,575 doses / 8,749,703 people)	79.96% (994,664 doses / 1,243,990 people)	39.26% (893,920 doses / 2,276,638 people)

Age	Dose 1	Dose 2
95+	65,115 (>99%)	61,681 (>99%)
90-94	181,297 (>99%)	175,801 (>99%)
85-89	350,132 (>99%)	343,350 (>99%)
80-84	570,947 (>99%)	563,789 (>99%)
75-79	863,369 (>99%)	854,946 (>99%)
70-74	1,118,625 (>99%)	1,107,326 (>99%)
65-69	1,269,809 (>99%)	1,255,140 (>99%)
60-64	1,437,159 (>99%)	1,420,773 (98.9%)
55-59	1,475,662 (94.9%)	1,458,976 (93.8%)
50-54	1,583,750 (>99%)	1,566,793 (>99%)
45-49	1,551,116 (92.5%)	1,532,756 (91.4%)
40-44	1,624,486 (>99%)	1,600,467 (98.8%)
35-39	1,793,069 (97.7%)	1,760,904 (96.0%)
30-34	1,818,996 (94.6%)	1,777,100 (92.4%)
25-29	1,743,562 (91.5%)	1,695,791 (88.9%)
20-24	1,531,881 (89.5%)	1,491,842 (87.1%)
16-19	1,115,469 (93.3%)	1,091,504 (91.3%)
12-15	1,050,756 (84.5%)	994,664 (80.0%)

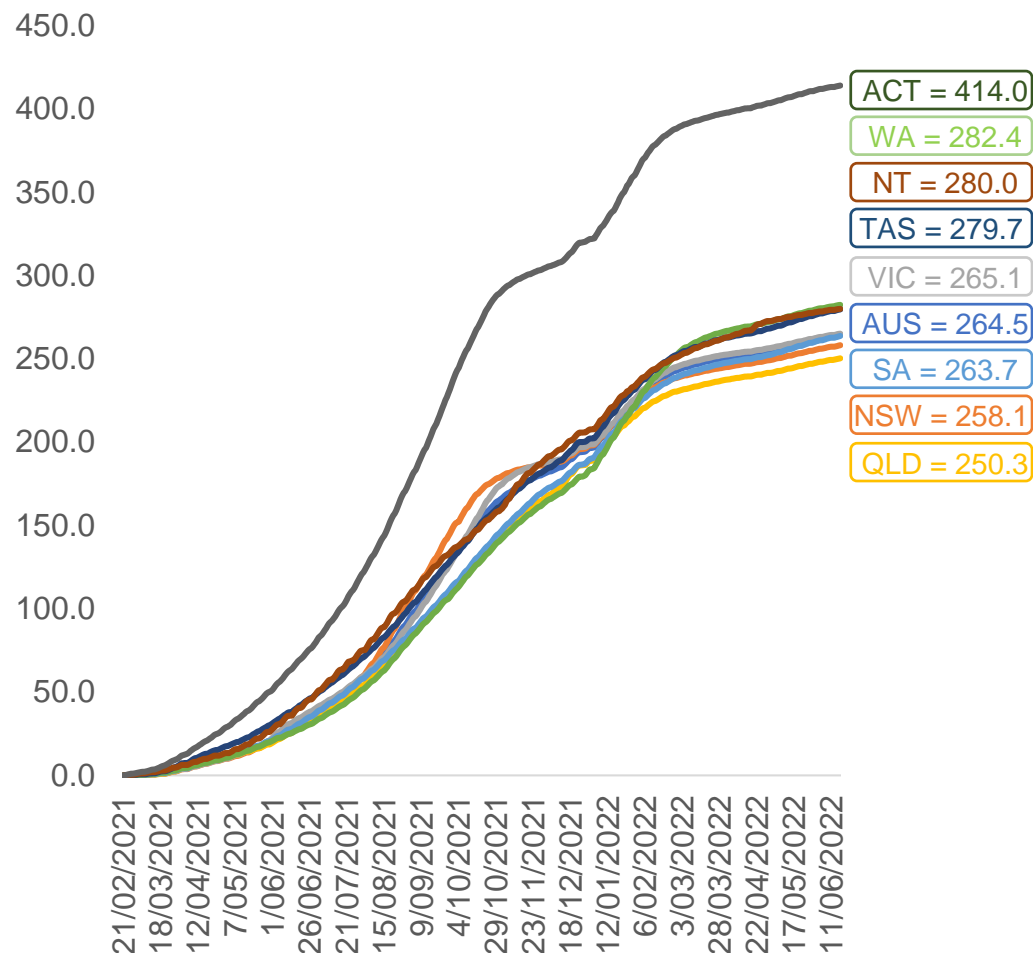


	AUS	ACT	NSW	NT	QLD	SA	TAS	VIC	WA
16 and over - dose 1	20,094,444	353,176	6,337,707	173,908	3,869,363	1,377,701	445,710	5,170,786	2,098,589
16 and over - dose 2	19,758,939	347,470	6,240,025	169,242	3,805,648	1,348,461	436,717	5,092,721	2,067,505
16 and over - population	20,619,959*	344,037	6,565,651	190,571	4,112,707	1,440,400	440,172	5,407,574	2,114,978
16 and over % with dose 1	97.45%	>99%	96.53%	91.26%	94.08%	95.65%	>99%	95.62%	>99%
16 and over % with dose 2	95.82%	>99%	95.04%	88.81%	92.53%	93.62%	>99%	94.18%	97.76%
5 to 11 - dose 1	1,193,702	31,828	356,429	13,173	206,760	83,762	28,483	324,996	140,534
5 to 11 - dose 2	893,920	27,179	272,868	8,733	148,977	62,769	22,988	244,367	101,384
5 to 11 - population	2,276,638	39,789	716,460	24,750	478,731	148,816	45,033	578,499	244,154
5 to 11 % with dose 1	52.43%	79.99%	49.75%	53.22%	43.19%	56.29%	63.25%	56.18%	57.56%
5 to 11 % with dose 2	39.26%	68.31%	38.09%	35.28%	31.12%	42.18%	51.05%	42.24%	41.52%
12 to 15 - dose 1	1,050,756	20,109	323,086	10,764	205,923	68,249	22,861	274,615	115,634
12 to 15 - dose 2	994,664	19,571	308,658	9,715	192,410	64,485	21,736	262,763	107,045
12 to 15 - population	1,243,990	19,693	390,330	13,060	270,146	82,747	26,308	308,611	132,869
12 to 15 % with dose 1	84.47%	>99%	82.77%	82.42%	76.23%	82.48%	86.90%	88.98%	87.03%
12 to 15 % with dose 2	79.96%	>99%	79.08%	74.39%	71.22%	77.93%	82.62%	85.14%	80.56%

*National population will not equal sum of listed jurisdictions due to a small number of people counted in national population residing in some 'other' territories. Sum of state doses will not add to national total as some records are unable to be geocoded to a State or Territory.
Doses sourced from Australian Immunisation Register, population from ABS ERP June 2020

Vaccinations by location

Cumulative total doses administered vs eligible state populations*

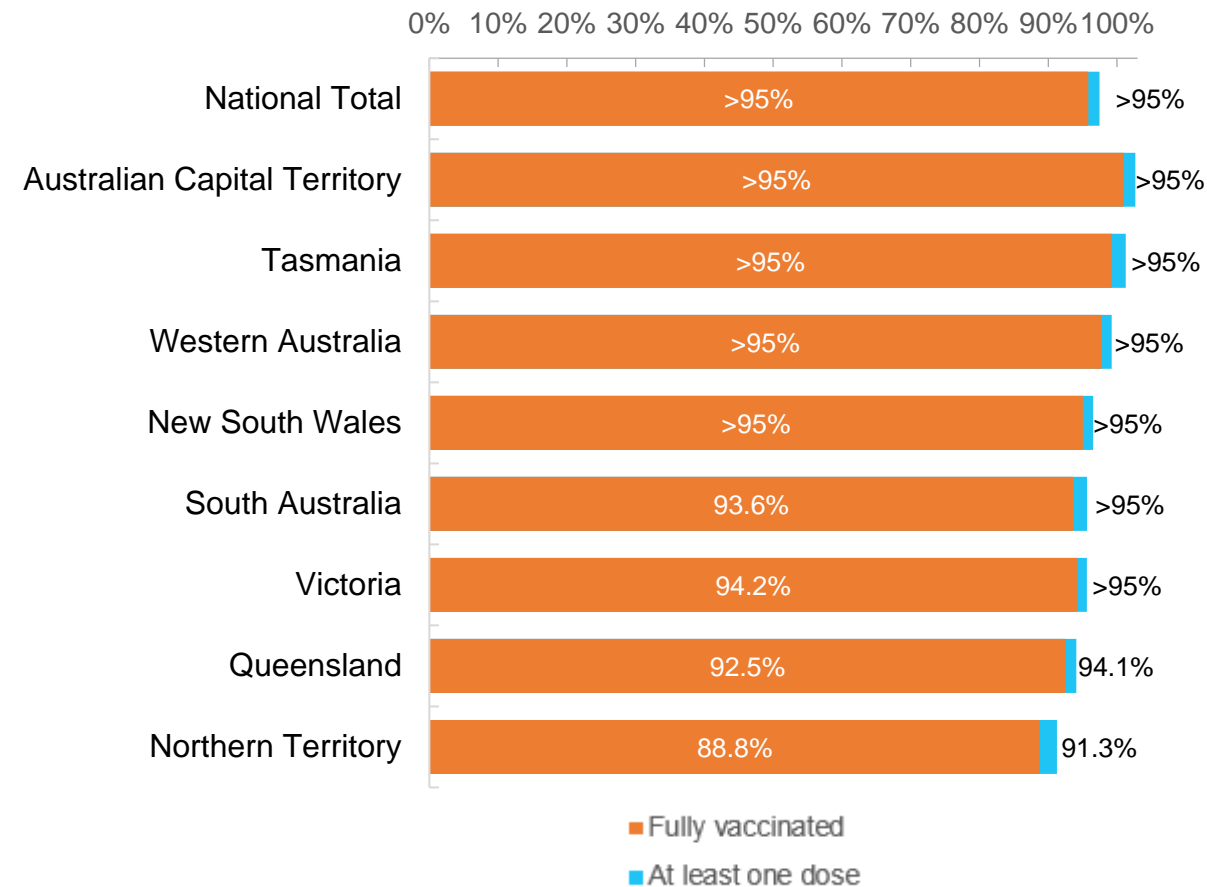


*Not an indication of percentage vaccinated, numbers will exceed 100 due to multiple doses required per person of the population. All doses are included for those aged 12 and above, and are based on vaccination provider location.

Data as at:
17 Jun 2022

Australia's COVID-19
Vaccine Roadmap

First and Second Doses by residential location



Aboriginal and Torres Strait Islander peoples

Number of people vaccinated

Data as at:
14 Jun 2022
Updated weekly

Australia's COVID-19
Vaccine Roadmap



443,032

people over the age of 16
have had at least one dose

85.0%

of people over the age of 16
have had at least one dose



424,557

people over the age of 16
are fully vaccinated

81.4%

of people over the age of 16 are
fully vaccinated



People aged 12 – 15 years

48,069

42,232

68.0%

At least one dose

59.8%

Fully vaccinated

178 Aboriginal community controlled health services (ACCHS)

0#
ACT

50
NSW

27
NT

44
QLD

12
SA

3
TAS

21
VIC

21
WA

Medicare Address State ^{##}	Individuals Dose 1	Individuals Dose 1 %	Individuals Dose 2	Individuals Dose 2 %
Australian Capital Territory	4,788	91.7%	4,668	89.4%
New South Wales	136,036	87.3%	132,973	85.4%
Northern Territory	41,436	89.7%	39,465	85.4%
Queensland	116,396	81.8%	111,007	78.0%
South Australia	20,072	80.5%	18,685	75.0%
Tasmania	13,908	88.8%	13,499	86.2%
Victoria	35,657	90.4%	34,887	88.5%
Western Australia	53,565	86.7%	49,846	80.7%
Unknown/Other Territories	21,174	70.2%	19,527	64.7%
Totals	443,032	85.0%	424,557	81.4%

Source: Australian Immunisation Register

*Identifying as Aboriginal and Torres Strait Islander is optional and the estimated population may be under reported.

**Includes all Aboriginal and Torres Strait Islander peoples who have received a vaccination, not limited to those administered in an ACCHS setting

#ACCHS in the ACT are currently operating as a Commonwealth Vaccine Clinics so not included to avoid double counting

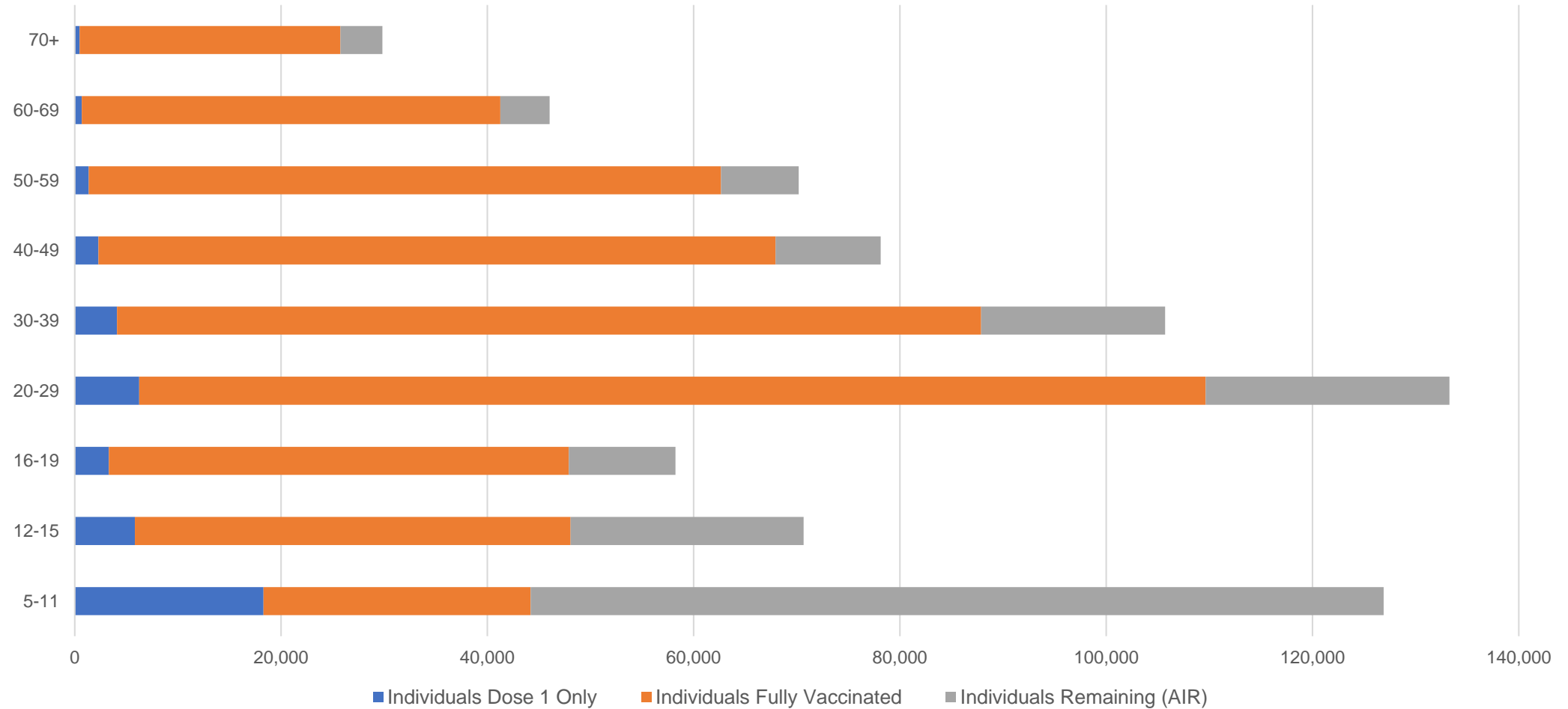
##The above table includes all identified Aboriginal and Torres Strait Islander people who are aged 16 and above by their state of residence.

Aboriginal and Torres Strait Islander peoples

Number of people vaccinated by age

Data as at:
14 Jun 2022
Updated weekly

Australia's COVID-19
Vaccine Roadmap



Source: Australian Immunisation Register

Commonwealth primary care

Data as at:
17 Jun 2022

Australia's COVID-19
Vaccine Roadmap



Primary care vaccine administration sites

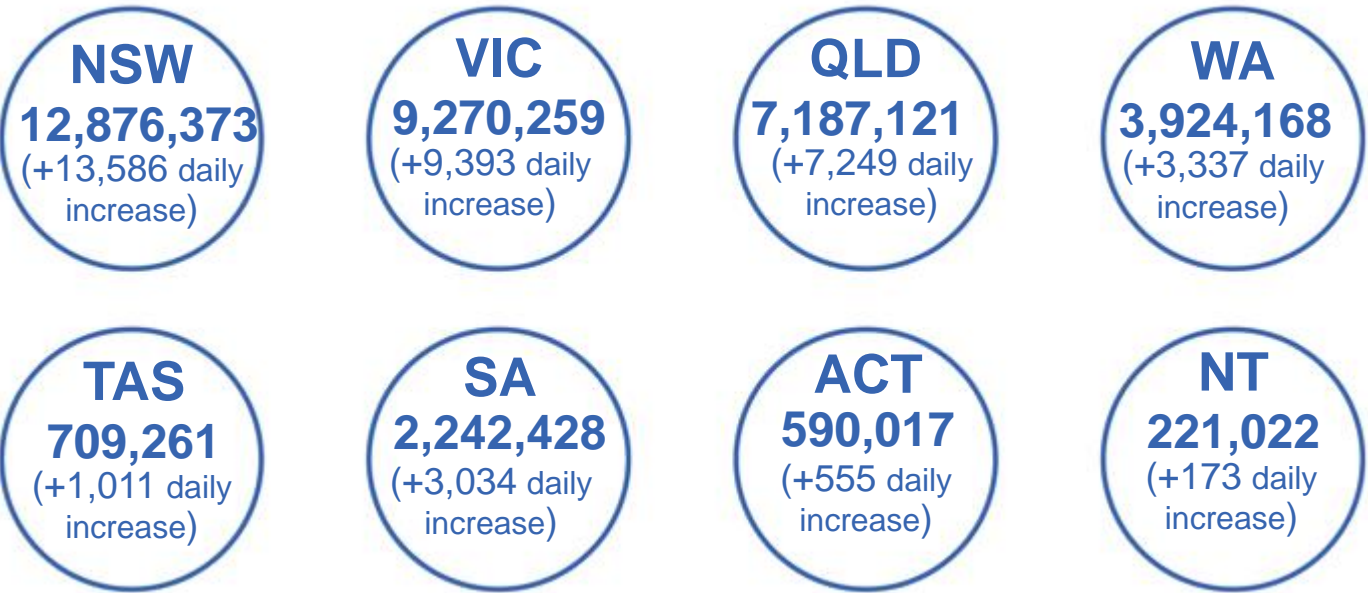
5,708	128	178	3,610
GPs	CVCs	ACCHS	Pharmacies



37,339,780 total vaccine doses administered
primary care settings as at 17 June
+ 38,841 recorded in the last 24 hours

Primary care vaccinations by provider type

	Doses administered	Daily increase	7 day increase
General Practice* includes other Commonwealth	29,871,579	26,472	143,005
Pharmacy	7,468,201	12,369	60,683



319,131

doses administered to persons
residing in other territories or with
missing residential information

*General practice includes Commonwealth Vaccination Clinics, Aboriginal Community Health Centres, Royal Flying Doctor Service and other Commonwealth vaccination facilities

Source: Australian Immunisation Register

Data as at:
17 Jun 2022

Commonwealth aged care and disability doses administered



1,312,456 (+ 1,008 last 24 hours)

Total vaccine doses administered in aged care and disability facilities as at 17 June

Number of doses administered as part of the Commonwealth aged and disability care rollout

NSW
571,003
(+234 daily increase)

VIC
246,812
(+229 daily increase)

QLD
208,715
(+150 daily increase)

WA
111,548
(+170 daily increase)

TAS
23,610
(<10 daily increase)

SA
86,186
(+118 daily increase)

ACT
17,888
(+10 daily increase)

NT
7,680
(<10 daily increase)

39,014

doses administered to persons
residing in other territories or with
missing residential information

*Sourced from the Australian Immunisation Register. Includes all persons vaccinated at participating residential aged care, disability and related industry settings.

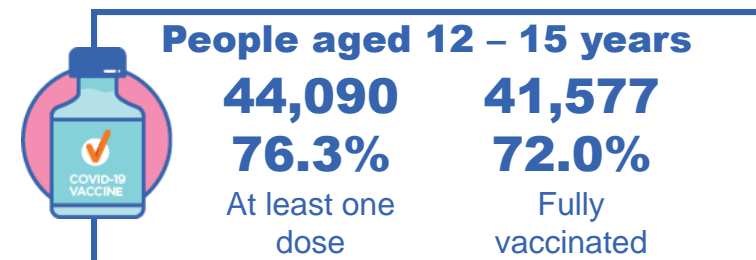
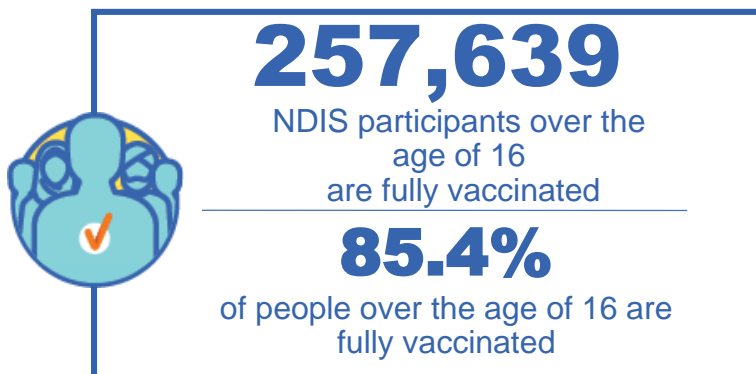
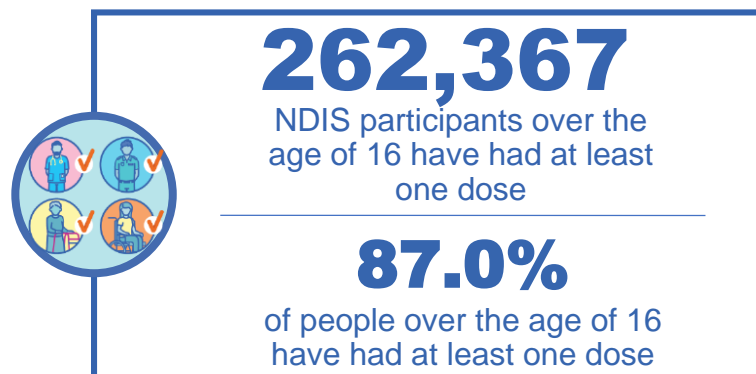
**State level breakdown indicates the residential location and may not align to the state in which the vaccination occurred.

Source: Australian Immunisation Register

National Disability Insurance Scheme (NDIS) reported vaccinations

Data as at:
16 June 2022
Updated weekly

Australia's COVID-19
Vaccine Roadmap



NDIS participant vaccinations

	People aged 16+ with at least one dose	People aged 16+ fully vaccinated	% People aged 16+ with at least one dose	% People aged 16+ fully vaccinated
ACT	4,940	4,877	89.0%	87.9%
NSW	80,332	79,051	87.5%	86.1%
NT	2,281	2,213	78.1%	75.8%
QLD	52,006	51,023	85.3%	83.7%
SA	21,490	20,986	84.8%	82.8%
TAS	6,558	6,403	87.3%	85.2%
VIC	69,685	68,523	88.1%	86.7%
WA	25,075	24,563	88.3%	86.5%
National	262,367	257,639	87.0%	85.4%

Source: Linkage between National Disability Insurance Agency data and the Australian Immunisation Register. Total NDIS participant numbers as at 30 May. Australian Immunisation Register data as at 15 June. Includes all participants regardless of residence type.

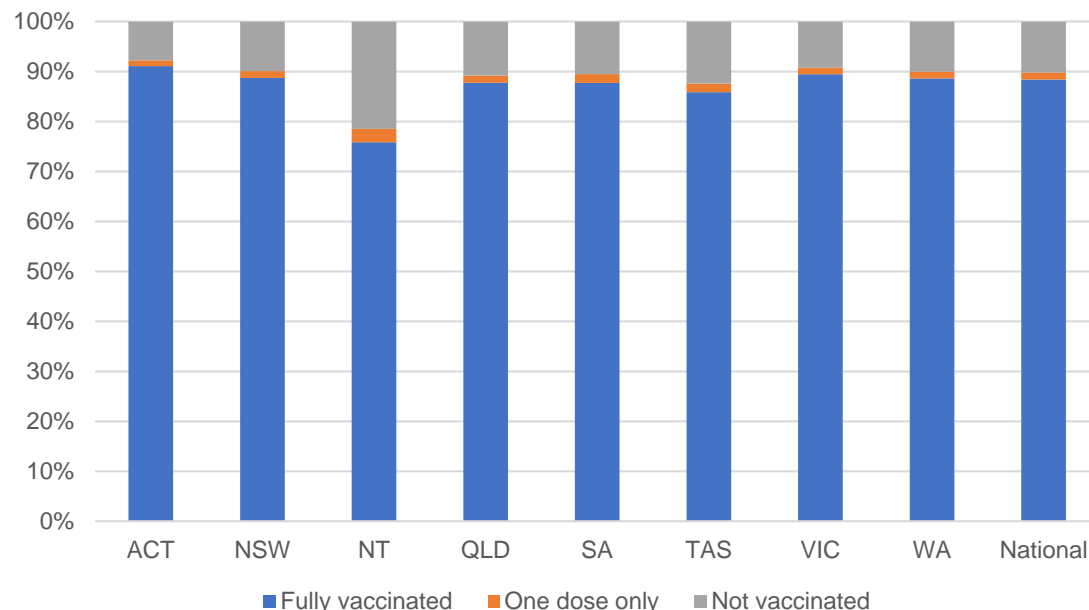
National Disability Insurance Scheme (NDIS) reported vaccinations

Data as at:
16 June 2022
Updated weekly

Australia's COVID-19
Vaccine Roadmap

NATIONAL	Total people with at least one dose	People fully vaccinated	Total number of individuals in cohort	% People with at least one dose	% People fully vaccinated
NDIS participants living in disability accommodation	21,116	20,787	23,469	90.0%	88.6%

NDIS participants in disability and aged care accommodation



Source: Linkage between National Disability Insurance Agency data and the Australian Immunisation Register. Includes participants residing in disability accommodation only.

Source: Total NDIS participant numbers as at 30 May. Participant data as at 14 June. Australian Immunisation Register data as at 15 June. Worker data as at 15 June.

NDIS workforce vaccinations

	NDIS workers with at least one dose	NDIS workers fully vaccinated	% NDIS workers with at least one dose	% NDIS workers fully vaccinated
NSW	127,155	121,812	98.2%	94.1%
VIC	117,930	114,648	98.4%	95.6%
QLD	71,443	70,577	97.8%	96.7%
WA	34,538	33,109	98.8%	94.7%
SA	35,963	33,926	98.6%	93.0%
TAS	10,800	10,584	99.5%	97.5%
ACT	12,340	12,313	99.8%	99.6%
NT	3,934	3,776	99.6%	95.6%
TOTAL	414,103	400,745	98.4%	95.2%

Source: the NDIS Commission has established a requirement for registered NDIS providers who provide intensive disability support services to report on the vaccination status of workers they employ, or otherwise engage, to deliver NDIS-funded supports and services, and who are required to be vaccinated in accordance with in-force state and territory public health orders. The statistics reflect data reported to the NDIS Commission by registered NDIS providers and should be considered indicative and subject to change

Note: Some registered NDIS providers are yet to report on the vaccination status of their workforce. The NDIS Commission is working with those providers around reporting requirements.

Remaining workers not included include those exempt from vaccination requirements, workers whose vaccination status is not yet verified by the provider (such as workers on leave) and provider reporting anomalies.

Residential aged care vaccination rollout

Residential aged care facilities status

176,781

People fully vaccinated

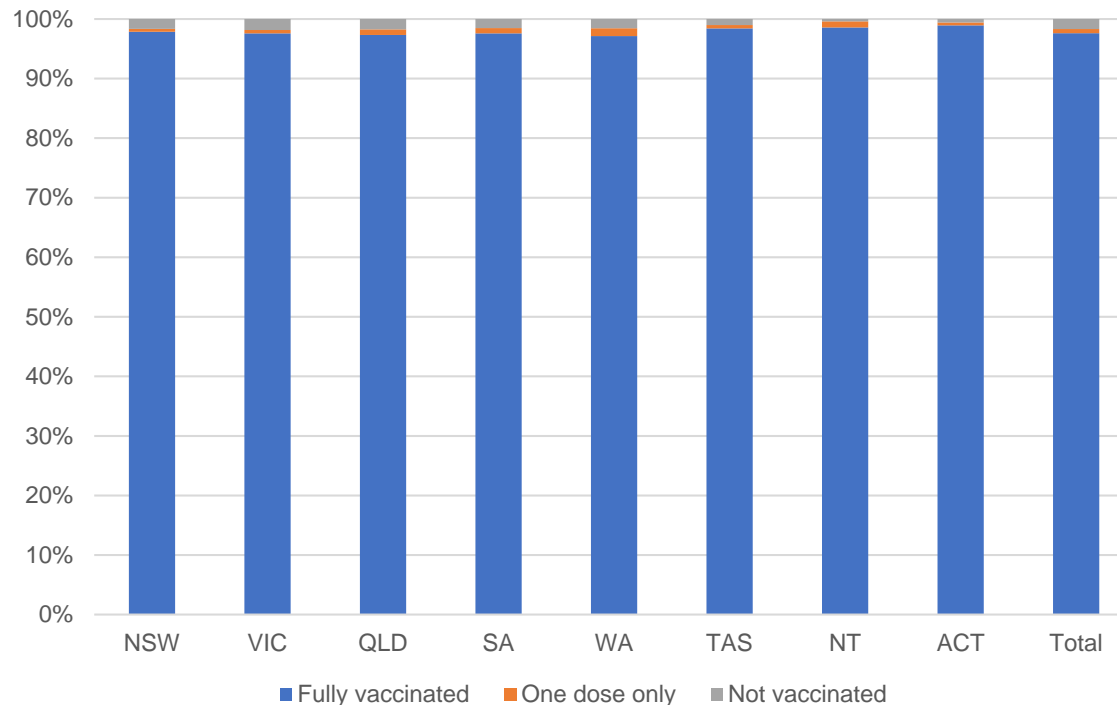
178,054

People with at least one dose

Australia's COVID-19 Vaccine Roadmap

Data as at:
16 June 2022
Updated weekly

Aged care resident vaccinations



Aged care worker vaccinations

Jurisdictions	Total workers with at least one dose	Workers fully vaccinated	% Workers with at least one dose	% Workers fully vaccinated
NSW	77,698	77,685	99.9%	99.8%
VIC	70,768	70,765	99.5%	99.5%
QLD	48,221	48,216	99.6%	99.6%
SA	27,347	27,337	100.0%	100.0%
WA	24,532	24,527	100.0%	100.0%
TAS	7,647	7,646	100.0%	100.0%
NT	939	939	100.0%	100.0%
ACT	2,920	2,920	100.0%	100.0%
Total	260,072	260,035	99.8%	99.7%

Source: Residential aged care provider self-reported COVID-19 vaccination information

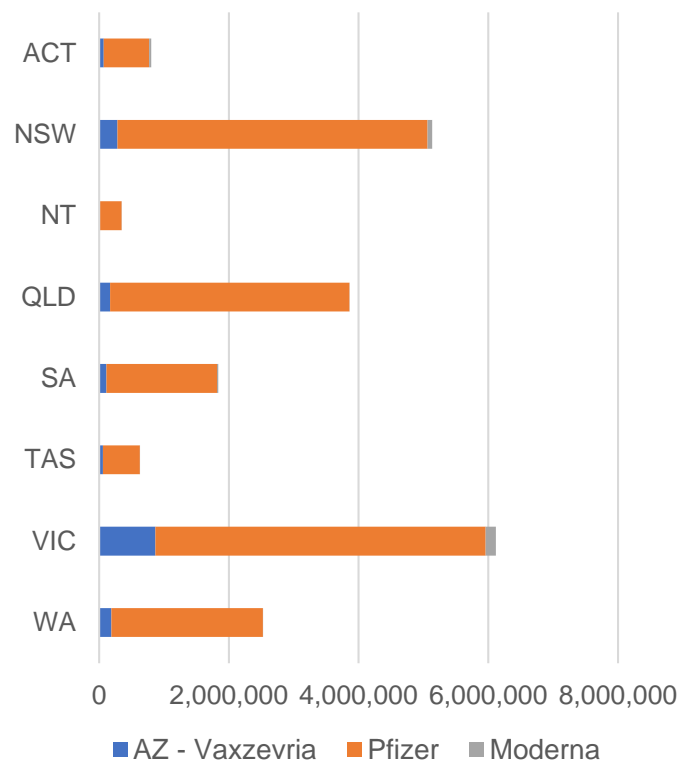
*Status updates are provided by facilities at least once per week. Reporting is updated Monday to Friday to encompass different facility updates being made on different days.

Data is sourced directly from Aged Care Service Providers and is not drawn or closely aligned with data from AIR due to inconsistencies and potential lags in uploading of records.

Data as at:
17 Jun 2022

Jurisdiction administered

Total vaccine doses administered in State and Territory clinics as at 17 June



21,265,702 total vaccine doses administered
in State and Territory clinics as at 17 June
+ **4,529** recorded in the last 24 hours
+ **24,249** recorded in the last 7 days

NSW
5,137,222
(+1,005 daily
increase)

VIC
6,124,061
(+1,073 daily
increase)

QLD
3,859,466
(+451 daily
increase)

WA
2,527,579
(+496 daily
increase)

TAS
627,291
(+91 daily
increase)

SA
1,839,594
(+781 daily
increase)

ACT
803,680
(+581 daily
increase)

NT
346,809
(+51 daily
increase)

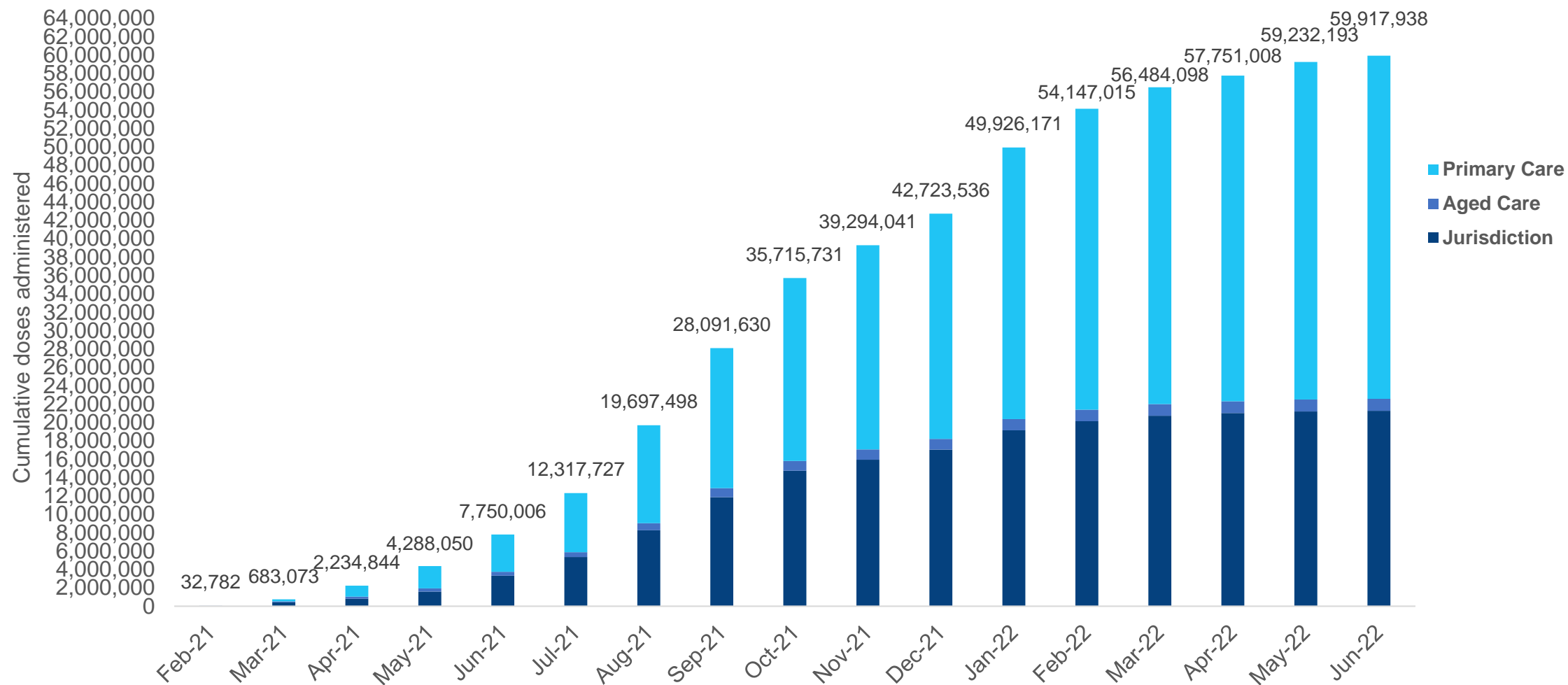
*Sourced from the Australian Immunisation Register. Numbers are calculated as difference in daily cumulative reported numbers to allow for historical corrections.

Source: Australian Immunisation Register

Cumulative doses administered by channel

Data as at:
17 Jun 2022

Australia's COVID-19
Vaccine Roadmap

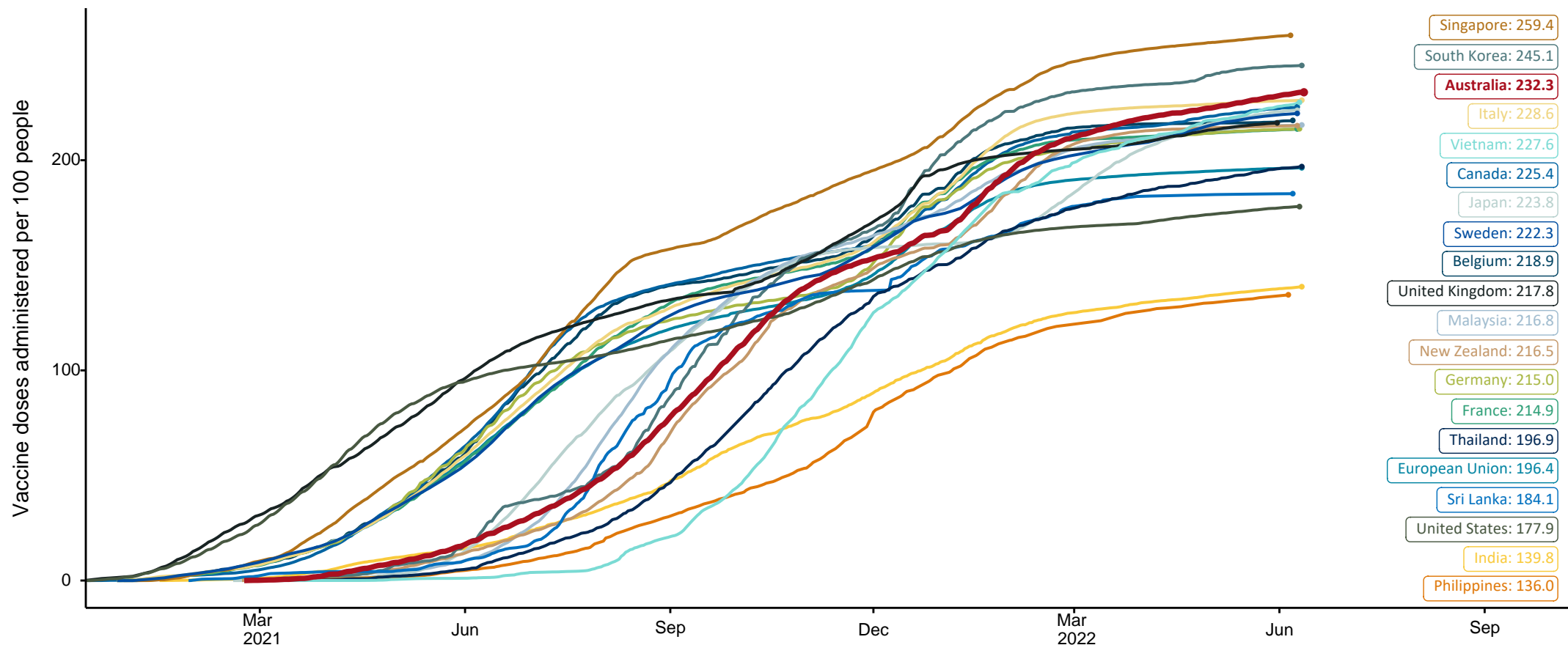


Source: Australian Immunisation Register

COVID-19 vaccine doses per 100, Australia and select countries

Data as at:
12 June 2022
Updated weekly

Australia's COVID-19
Vaccine Roadmap

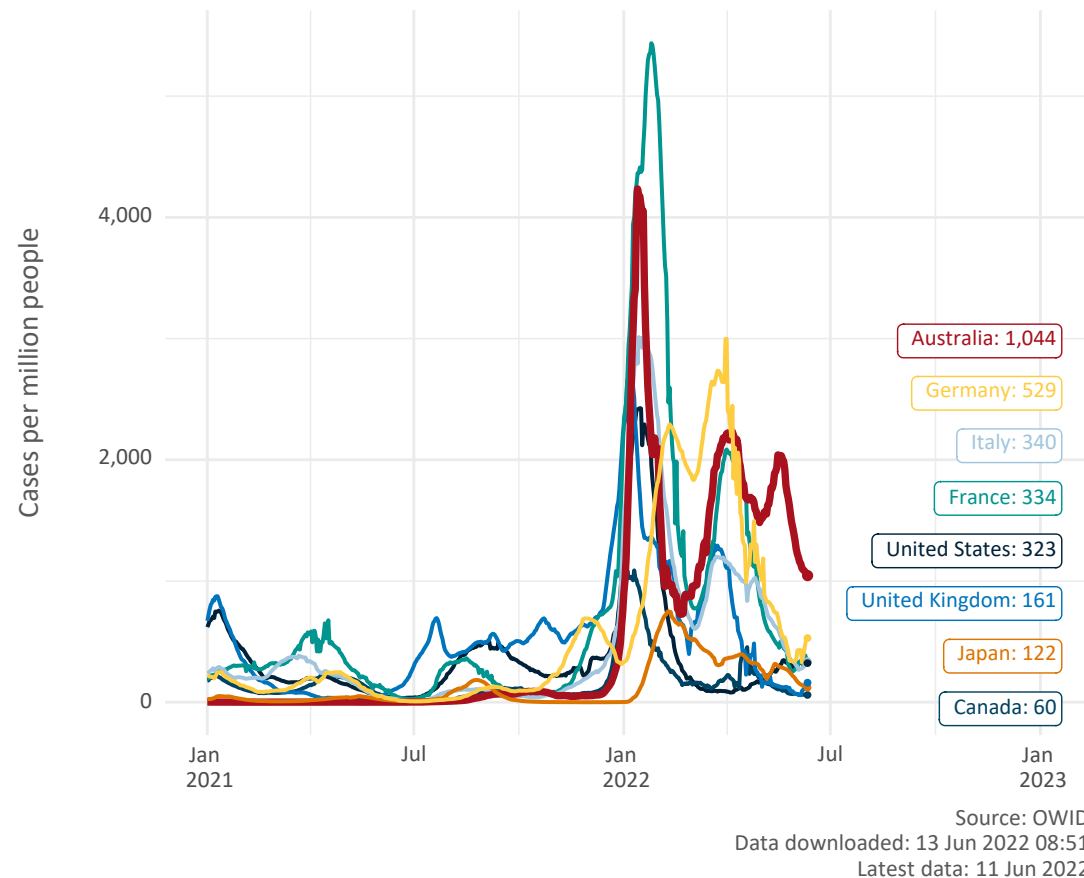


Note: From 11 January 2022, data for Australia includes all doses administered to people 5 and over. Prior to 11 January, data was for 12 and over.
Source: Department of Health (Australia), Our World in Data (international)
Latest data: 12 June

International data – COVID-19

Data as at:
12 June 2022
Updated weekly

New daily cases per million since 2021, Australia and G7 countries
Smoothed - 7 day average



COVID-19 deaths in past 7 days - Australia and select countries

