



Australian Government
Operation COVID Shield

COVID-19 Vaccine Roll-out

15 June 2022

Data as at:
14 Jun 2022

Total vaccine doses



59,773,648 total vaccine doses administered nationally as at 14 June

+51,290 recorded in the last 24 hours



20,089,823

people have had at least one dose

>95%

of people over the age of 16 have had at least one dose



19,754,478

people are fully vaccinated

>95%

of people over the age of 16 are fully vaccinated



13,798,470

people over the age of 16 who have received three or more doses

NSW
18,537,273
(+16,821 daily increase)

VIC
15,689,115
(+13,136 daily increase)

QLD
11,306,064
(+9,655 daily increase)

WA
6,578,284
(+4,718 daily increase)

TAS
1,353,940
(+1,188 daily increase)

SA
4,151,224
(+3,913 daily increase)

ACT
1,565,233
(+1,436 daily increase)

NT
592,515
(+423 daily increase)

*Administration state breakdown indicates state in which a vaccine was administered

**Overall dose count includes instances of more than three doses per person in a small number of cases.

Source: Australian Immunisation Register

Booster Vaccinations

Data as at:
14 Jun 2022



223,388

Indigenous people who have received three or more doses

53.8%

of eligible population (415,488)



116,631

Aged Care Residents who have received three or more doses##

94.1%

of eligible population (177,039)



191,126

NDIS participants

who have received three or more doses#

74.8%

of eligible population
(255,000)

21,914

NDIS residents

who have received three or more doses#

89.3%

of eligible population
(24,000)



13,798,470

total people who have received three or more doses

+7,703 daily increase

70.3% of eligible population (19,636,521)

	Number of People	Daily Increase	% of Eligible
NSW	4,208,947	2,513	67.7%
VIC	3,681,383	1,951	72.6%
QLD	2,389,746	1,484	63.3%
WA	1,695,297	579	83.1%
SA	984,710	699	73.8%
TAS	315,406	169	72.7%
ACT	272,734	134	78.7%
NT	130,823	107	78.0%

*People may belong to multiple groups and could be represented in the above breakdowns multiple times.
NDIS participants data as at 12 June 2022. ## Aged Care Residents data as at 14 June 2022.

Source: Australian Immunisation Register

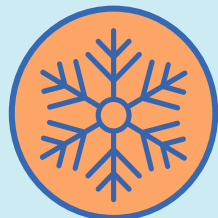
119,591

doses administered to persons residing in other territories or with missing residential information

Winter / Fourth Doses

Data as at:
14 Jun 2022

Australia's COVID-19
Vaccine Roadmap



1,964,789 total people (16+) who have received four or more doses

+39,639 daily increase



1,743,037

People aged 65+ who have received four or more doses

53.3%

of eligible population (3,272,110)

	Number of People 16+	Daily Increase
ACT	39,394	688
NSW	633,476	13,342
NT	8,617	202
QLD	375,368	7,412
SA	157,619	2,974
TAS	54,454	953
VIC	492,382	10,157
WA	193,947	3,725

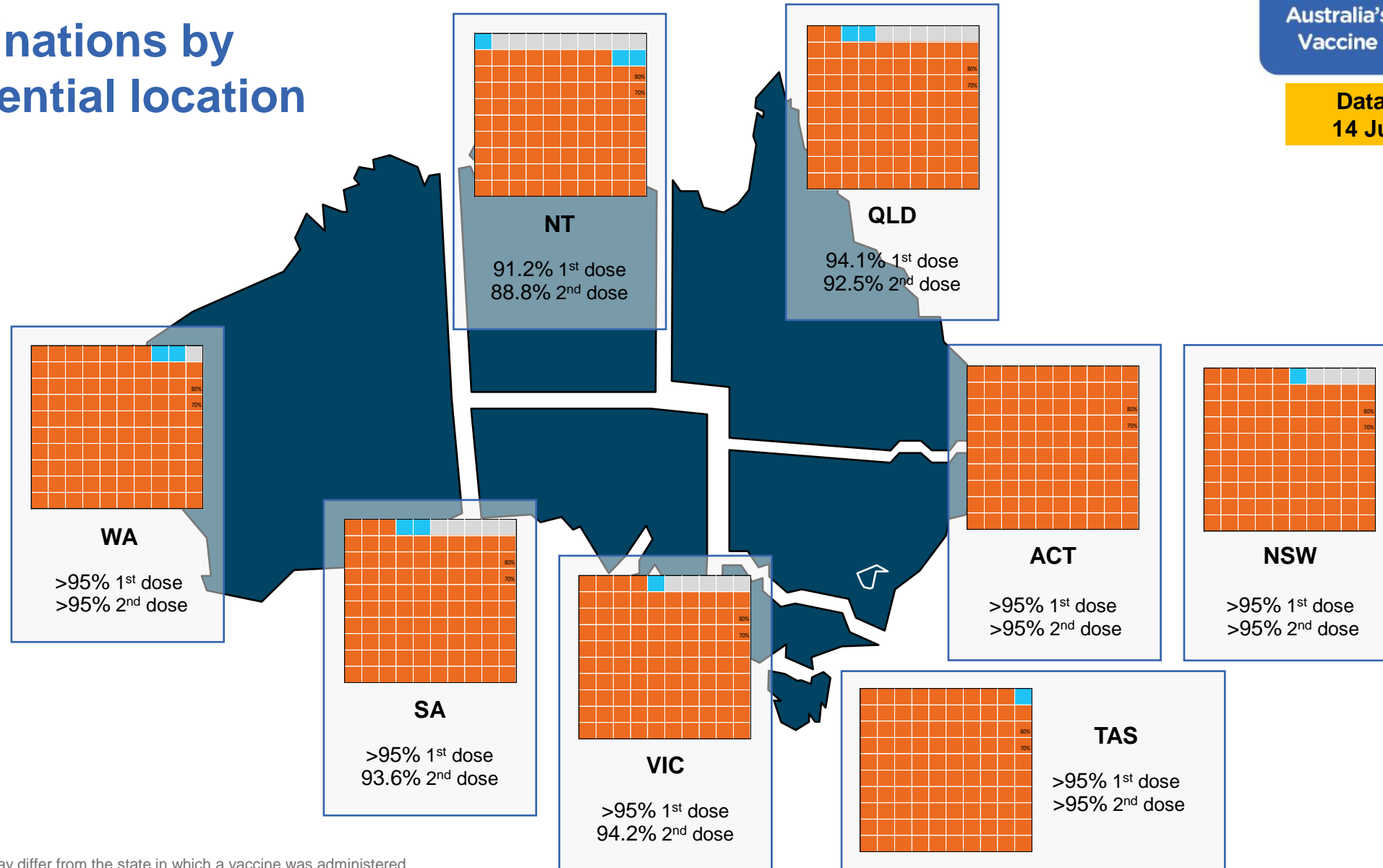
9,532 doses administered to persons residing in other territories or with missing residential information

*People become eligible for a winter booster four months after their third dose.

Source: Australian Immunisation Register

Data as at:
14 Jun 2022

Vaccinations by residential location



*Residential state may differ from the state in which a vaccine was administered

Commonwealth and Jurisdiction vaccine doses administered

Data as at:
14 Jun 2022



59,773,648 total vaccine doses administered nationally as at 14 June

+ **51,290** recorded in the last 24 hours

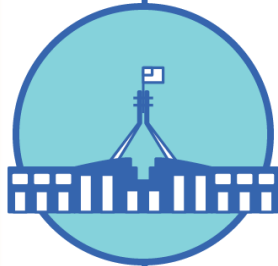


21,252,829

doses administered by state and territory facilities

+ **4,344**

recorded in the last 24 hours



38,520,819

doses administered by commonwealth facilities

+ **46,946**

recorded in the last 24 hours

37,210,802 total vaccine doses administered in primary care settings

1,310,017 total vaccine doses administered in aged care and disability settings

NSW	Jurisdictions	Commonwealth
Cumulative	5,135,184	13,402,089
Daily increase	502	16,319

VIC	Jurisdictions	Commonwealth
Cumulative	6,120,728	9,568,387
Daily increase	1,389	11,747

QLD	Jurisdictions	Commonwealth
Cumulative	3,858,033	7,448,031
Daily increase	461	9,194

WA	Jurisdictions	Commonwealth
Cumulative	2,525,935	4,052,349
Daily increase	625	4,093

TAS	Jurisdictions	Commonwealth
Cumulative	626,935	727,005
Daily increase	130	1,058

SA	Jurisdictions	Commonwealth
Cumulative	1,837,321	2,313,903
Daily increase	594	3,319

ACT	Jurisdictions	Commonwealth
Cumulative	802,089	763,144
Daily increase	548	888

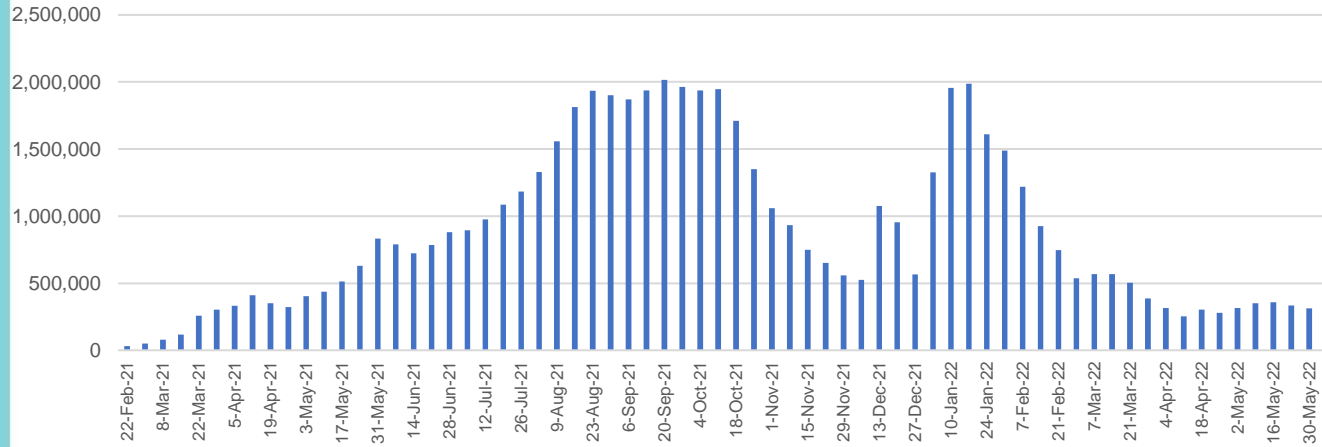
NT	Jurisdictions	Commonwealth
Cumulative	346,604	245,911
Daily increase	95	328

Vaccine milestone charts

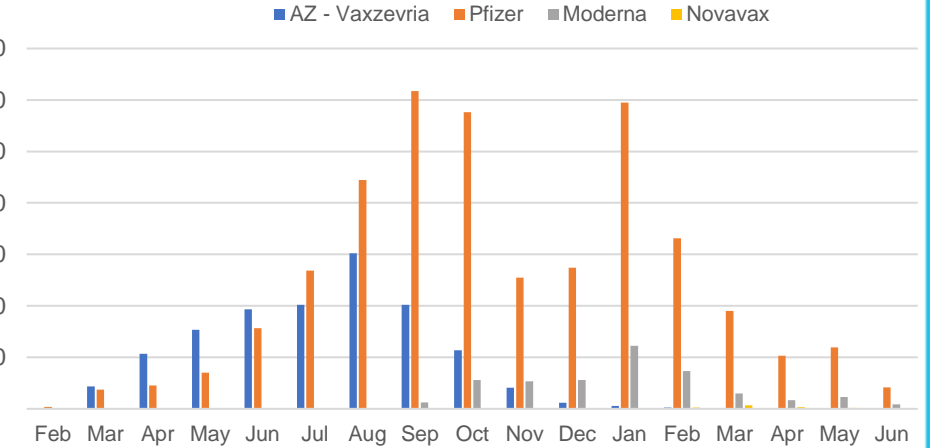
Data as at:
14 Jun 2022

Australia's COVID-19
Vaccine Roadmap

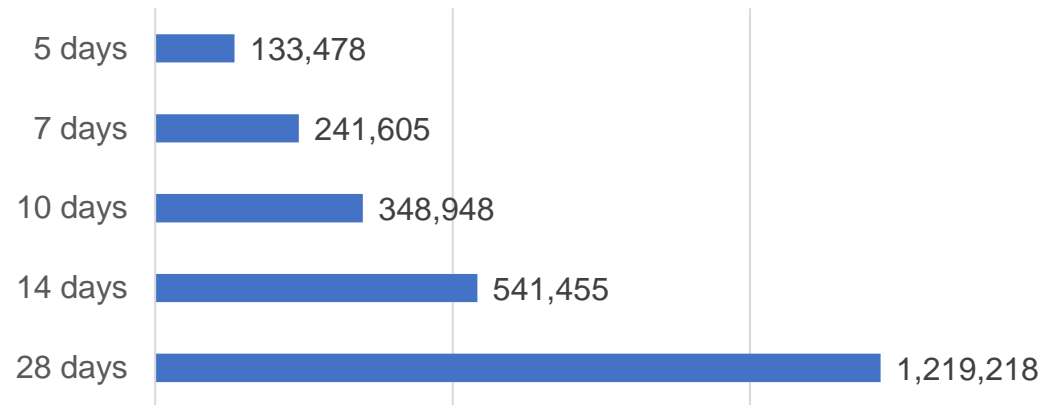
Doses Administered by Week



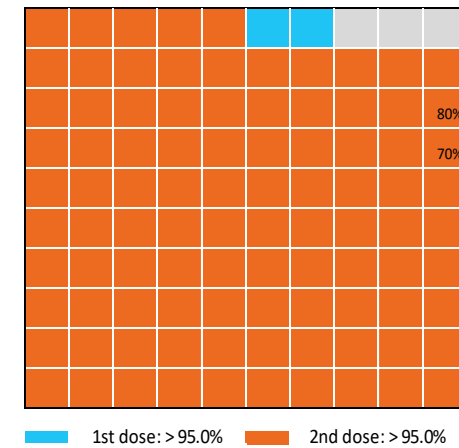
Doses by administration month and vaccine type



Doses Reported



Eligible population percentage coverage



*Each square represents 1% of the national population. Squares are filled as milestones are achieved.

*Sourced from the Australian Immunisation Register.

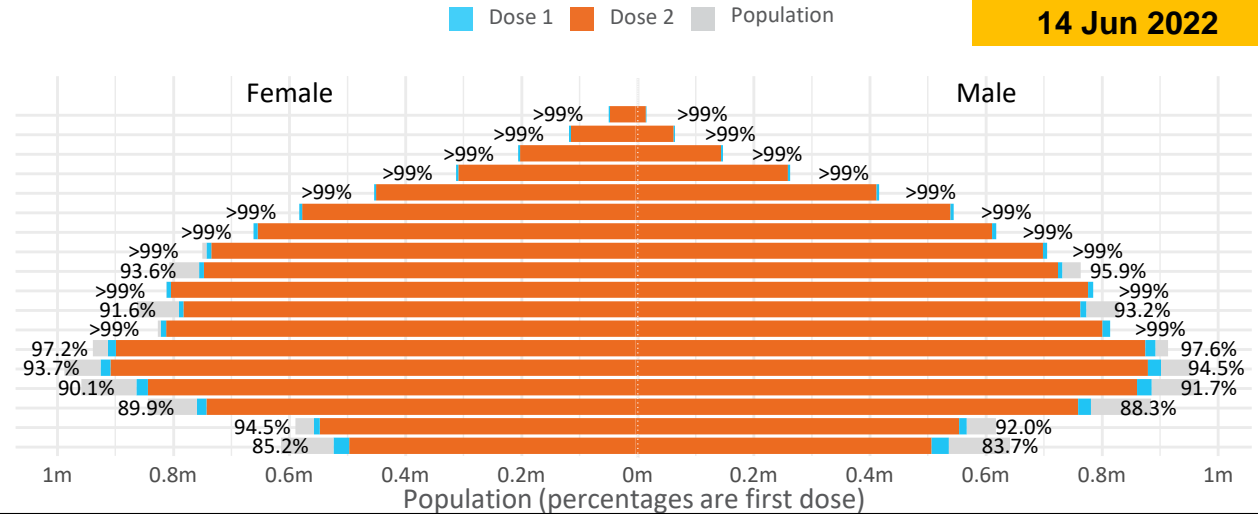
Doses by age and sex

First and second doses by age and sex

	16+	50+	12-15	5-11
Dose 1	97.43% (20,089,823 doses / 20,619,959 people)	>99% (8,912,534 doses / 8,749,703 people)	84.45% (1,050,499 doses / 1,243,990 people)	52.48% (1,194,710 doses / 2,276,638 people)
Dose 2	95.80% (19,754,478 doses / 20,619,959 people)	>99% (8,805,292 doses / 8,749,703 people)	79.95% (994,529 doses / 1,243,990 people)	39.19% (892,133 doses / 2,276,638 people)

Data as at:
14 Jun 2022

Age	Dose 1	Dose 2
95+	64,907 (>99%)	61,477 (>99%)
90-94	181,081 (>99%)	175,568 (>99%)
85-89	349,794 (>99%)	342,997 (>99%)
80-84	570,462 (>99%)	563,294 (>99%)
75-79	862,756 (>99%)	854,345 (>99%)
70-74	1,118,289 (>99%)	1,107,005 (>99%)
65-69	1,269,418 (>99%)	1,254,792 (>99%)
60-64	1,436,840 (>99%)	1,420,459 (98.9%)
55-59	1,475,651 (94.9%)	1,458,984 (93.8%)
50-54	1,583,336 (>99%)	1,566,371 (>99%)
45-49	1,550,967 (92.5%)	1,532,573 (91.4%)
40-44	1,623,826 (>99%)	1,599,824 (98.7%)
35-39	1,792,730 (97.7%)	1,760,580 (95.9%)
30-34	1,818,645 (94.5%)	1,776,784 (92.4%)
25-29	1,743,410 (91.4%)	1,695,704 (88.9%)
20-24	1,532,262 (89.5%)	1,492,243 (87.1%)
16-19	1,115,449 (93.3%)	1,091,478 (91.3%)
12-15	1,050,499 (84.4%)	994,529 (79.9%)



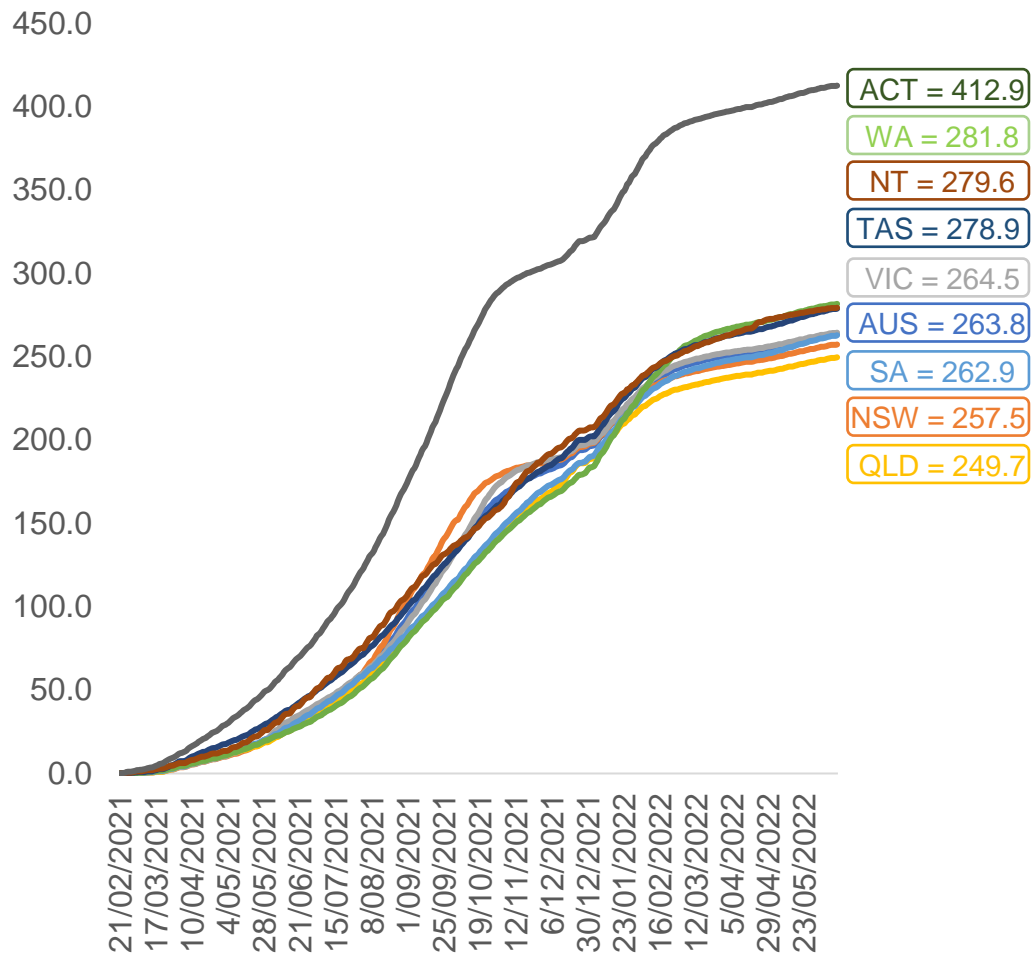
	AUS	ACT	NSW	NT	QLD	SA	TAS	VIC	WA
16 and over - dose 1	20,089,823	353,092	6,336,206	173,890	3,868,118	1,377,352	445,624	5,169,489	2,098,174
16 and over - dose 2	19,754,478	347,395	6,238,635	169,226	3,804,375	1,348,107	436,606	5,091,585	2,067,030
16 and over - population	20,619,959*	344,037	6,565,651	190,571	4,112,707	1,440,400	440,172	5,407,574	2,114,978
16 and over % with dose 1	97.43%	>99%	96.51%	91.25%	94.05%	95.62%	>99%	95.60%	>99%
16 and over % with dose 2	95.80%	>99%	95.02%	88.80%	92.50%	93.59%	>99%	94.16%	97.73%
5 to 11 - dose 1	1,194,710	31,835	356,716	13,174	206,959	83,798	28,501	325,239	140,704
5 to 11 - dose 2	892,133	27,165	272,070	8,686	148,765	62,656	22,961	243,948	101,221
5 to 11 - population	2,276,638	39,789	716,460	24,750	478,731	148,816	45,033	578,499	244,154
5 to 11 % with dose 1	52.48%	80.01%	49.79%	53.23%	43.23%	56.31%	63.29%	56.22%	57.63%
5 to 11 % with dose 2	39.19%	68.27%	37.97%	35.09%	31.07%	42.10%	50.99%	42.17%	41.46%
12 to 15 - dose 1	1,050,499	20,097	323,002	10,761	205,892	68,224	22,872	274,536	115,557
12 to 15 - dose 2	994,529	19,565	308,596	9,705	192,432	64,461	21,746	262,696	107,004
12 to 15 - population	1,243,990	19,693	390,330	13,060	270,146	82,747	26,308	308,611	132,869
12 to 15 % with dose 1	84.45%	>99%	82.75%	82.40%	76.22%	82.45%	86.94%	88.96%	86.97%
12 to 15 % with dose 2	79.95%	>99%	79.06%	74.31%	71.23%	77.90%	82.66%	85.12%	80.53%

*National population will not equal sum of listed jurisdictions due to a small number of people counted in national population residing in some 'other' territories. Sum of state doses will not add to national total as some records are unable to be geocoded to a State or Territory. Doses sourced from Australian Immunisation Register, population from ABS ERP June 2020

Data as at:
14 Jun 2022

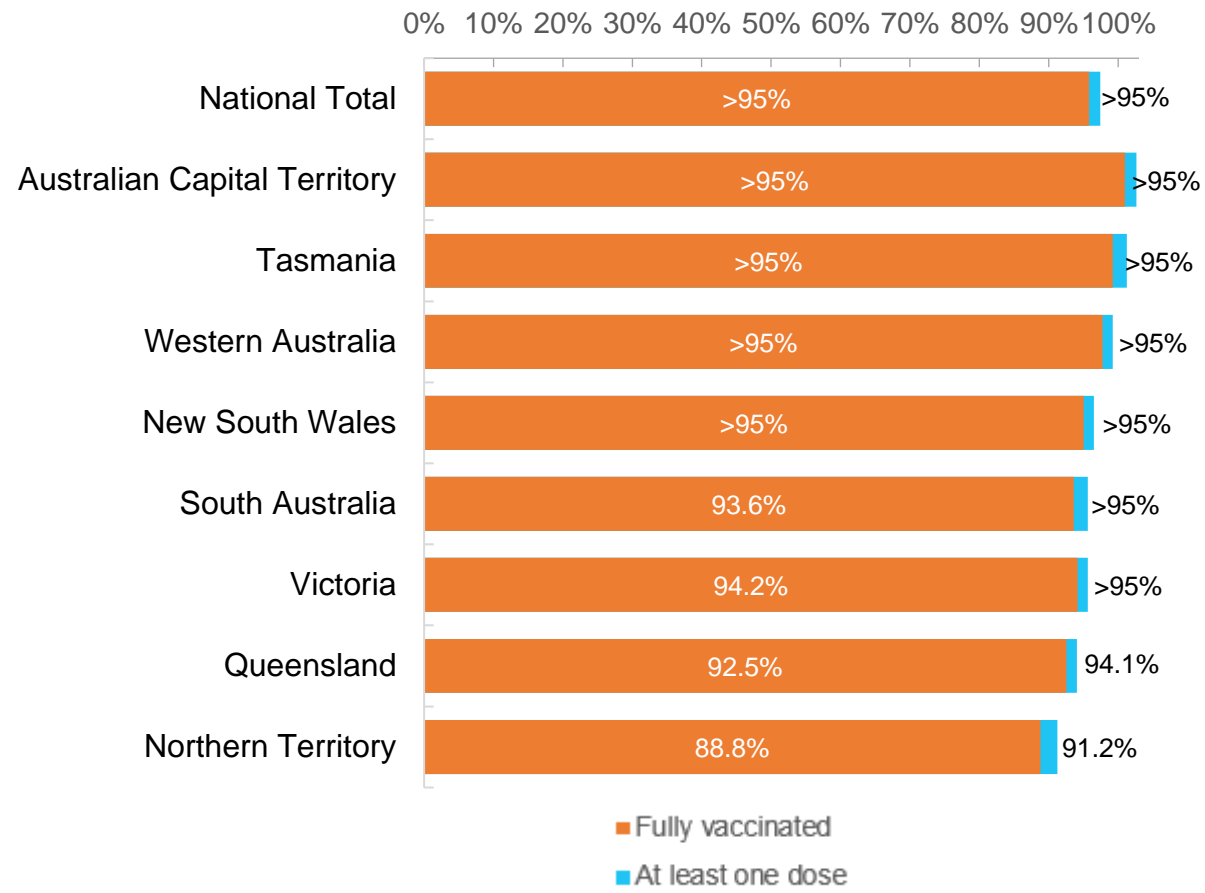
Vaccinations by location

Cumulative total doses administered vs eligible state populations*



*Not an indication of percentage vaccinated, numbers will exceed 100 due to multiple doses required per person of the population. All doses are included for those aged 12 and above, and are based on vaccination provider location.

First and Second Doses by residential location



Aboriginal and Torres Strait Islander peoples

Number of people vaccinated

Data as at:
14 Jun 2022
Updated weekly

Australia's COVID-19
Vaccine Roadmap



443,032

people over the age of 16
have had at least one dose

85.0%

of people over the age of 16
have had at least one dose



424,557

people over the age of 16
are fully vaccinated

81.4%

of people over the age of 16 are
fully vaccinated



People aged 12 – 15 years

48,069

42,232

68.0%

59.8%

At least one dose

Fully vaccinated

178 Aboriginal community controlled health services (ACCHS)

0#	50	27	44	12	3	21	21
ACT	NSW	NT	QLD	SA	TAS	VIC	WA

Medicare Address State ^{##}	Individuals Dose 1	Individuals Dose 1 %	Individuals Dose 2	Individuals Dose 2 %
Australian Capital Territory	4,788	91.7%	4,668	89.4%
New South Wales	136,036	87.3%	132,973	85.4%
Northern Territory	41,436	89.7%	39,465	85.4%
Queensland	116,396	81.8%	111,007	78.0%
South Australia	20,072	80.5%	18,685	75.0%
Tasmania	13,908	88.8%	13,499	86.2%
Victoria	35,657	90.4%	34,887	88.5%
Western Australia	53,565	86.7%	49,846	80.7%
Unknown/Other Territories	21,174	70.2%	19,527	64.7%
Totals	443,032	85.0%	424,557	81.4%

Source: Australian Immunisation Register

*Identifying as Aboriginal and Torres Strait Islander is optional and the estimated population may be under reported.

**Includes all Aboriginal and Torres Strait Islander peoples who have received a vaccination, not limited to those administered in an ACCHS setting

#ACCHS in the ACT are currently operating as a Commonwealth Vaccine Clinics so not included to avoid double counting

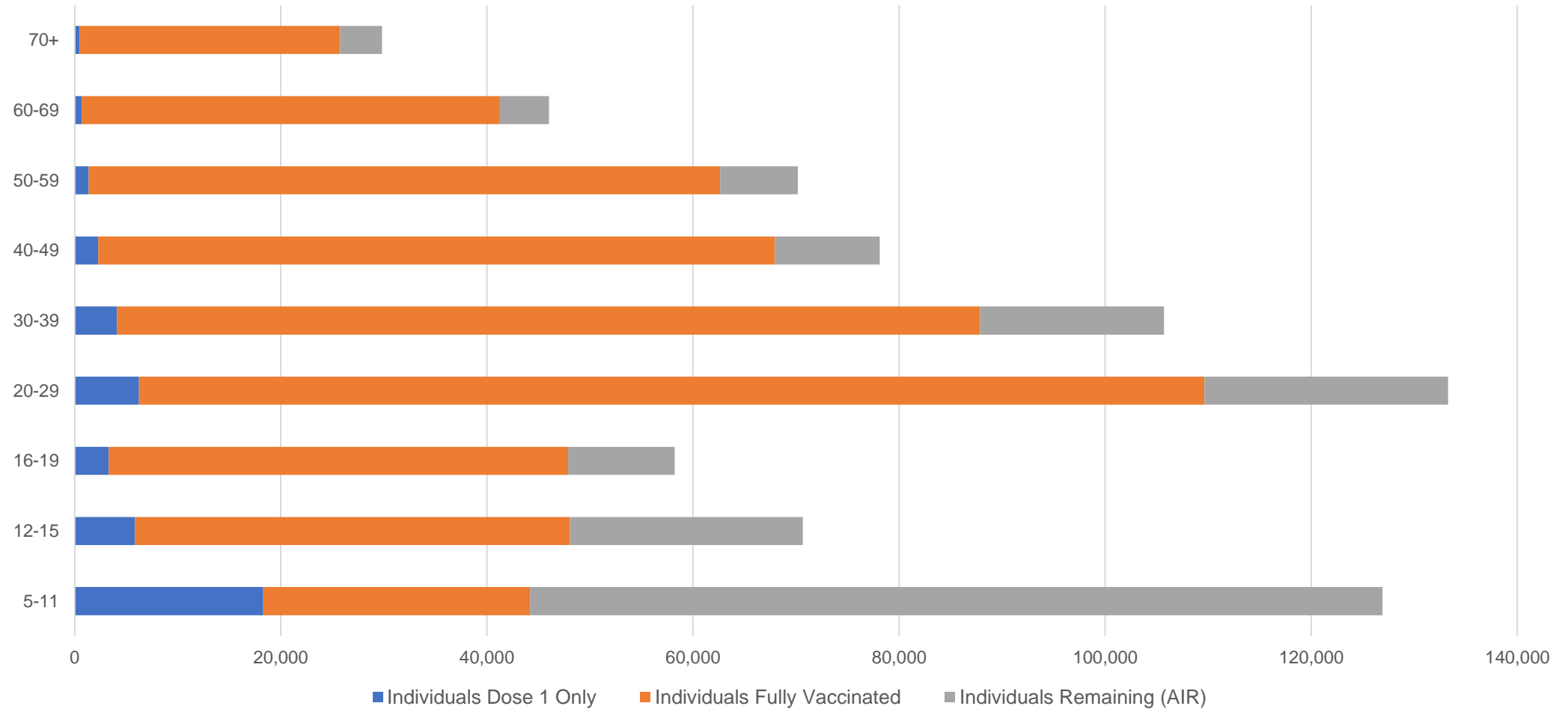
##The above table includes all identified Aboriginal and Torres Strait Islander people who are aged 16 and above by their state of residence.

Aboriginal and Torres Strait Islander peoples

Number of people vaccinated by age

Data as at:
14 Jun 2022
Updated weekly

Australia's COVID-19
Vaccine Roadmap



Source: Australian Immunisation Register

Commonwealth primary care

Data as at:
14 Jun 2022

Australia's COVID-19
Vaccine Roadmap



Primary care vaccine administration sites

5,711	128	178	3,611
GPs	CVCs	ACCHS	Pharmacies



37,210,802 total vaccine doses administered
primary care settings as at 14 June
+ 46,117 recorded in the last 24 hours

Primary care vaccinations by provider type

	Doses administered	Daily increase	7 day increase
General Practice* includes other Commonwealth	29,781,182	33,451	150,299
Pharmacy	7,429,620	12,666	62,004

NSW
12,832,145
(+16,126 daily increase)

VIC
9,237,801
(+11,726 daily increase)

QLD
7,162,958
(+9,144 daily increase)

WA
3,912,446
(+3,636 daily increase)

TAS
705,913
(+1,049 daily increase)

SA
2,232,090
(+3,243 daily increase)

ACT
587,978
(+815 daily increase)

NT
220,442
(+273 daily increase)

319,029

doses administered to persons
residing in other territories or with
missing residential information

*General practice includes Commonwealth Vaccination Clinics, Aboriginal Community Health Centres, Royal Flying Doctor Service and other Commonwealth vaccination facilities

Source: Australian Immunisation Register

Data as at:
14 Jun 2022

Commonwealth aged care and disability doses administered



1,310,017 (+ 829 last 24 hours)

Total vaccine doses administered in aged care and disability facilities as at 14 June

Number of doses administered as part of the Commonwealth aged and disability care rollout

NSW
570,222
(+244 daily increase)

VIC
246,283
(+77 daily increase)

QLD
208,360
(+122 daily increase)

WA
111,113
(+192 daily increase)

TAS
23,598
(<10 daily increase)

SA
86,021
(+113 daily increase)

ACT
17,855
(+47 daily increase)

NT
7,682
(<10 daily increase)

38,883

doses administered to persons residing in other territories or with missing residential information

*Sourced from the Australian Immunisation Register. Includes all persons vaccinated at participating residential aged care, disability and related industry settings.

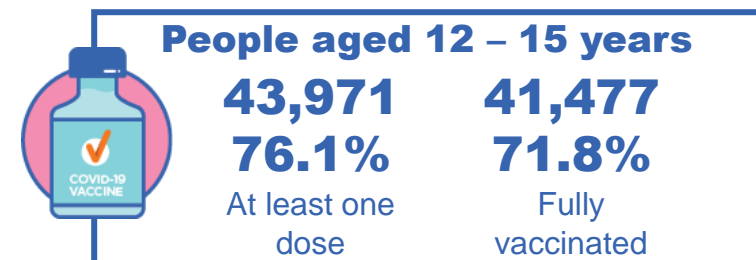
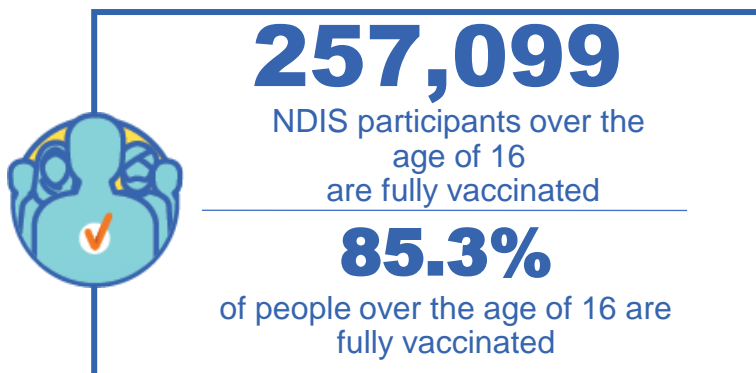
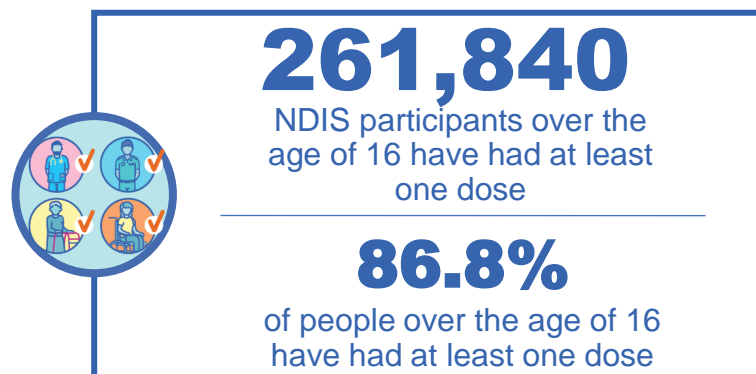
**State level breakdown indicates the residential location and may not align to the state in which the vaccination occurred.

Source: Australian Immunisation Register

National Disability Insurance Scheme (NDIS) reported vaccinations

Data as at:
09 June 2022
Updated weekly

Australia's COVID-19
Vaccine Roadmap



NDIS participant vaccinations

	People aged 16+ with at least one dose	People aged 16+ fully vaccinated	% People aged 16+ with at least one dose	% People aged 16+ fully vaccinated
ACT	4,931	4,865	88.9%	87.7%
NSW	80,199	78,915	87.3%	85.9%
NT	2,271	2,202	77.8%	75.4%
QLD	51,866	50,885	85.1%	83.5%
SA	21,433	20,931	84.6%	82.6%
TAS	6,549	6,397	87.1%	85.1%
VIC	69,568	68,397	88.0%	86.5%
WA	25,023	24,507	88.1%	86.3%
National	261,840	257,099	86.8%	85.3%

Source: Linkage between National Disability Insurance Agency data and the Australian Immunisation Register. Total NDIS participant numbers as at 30 May. Australian Immunisation Register data as at 08 June. Includes all participants regardless of residence type.

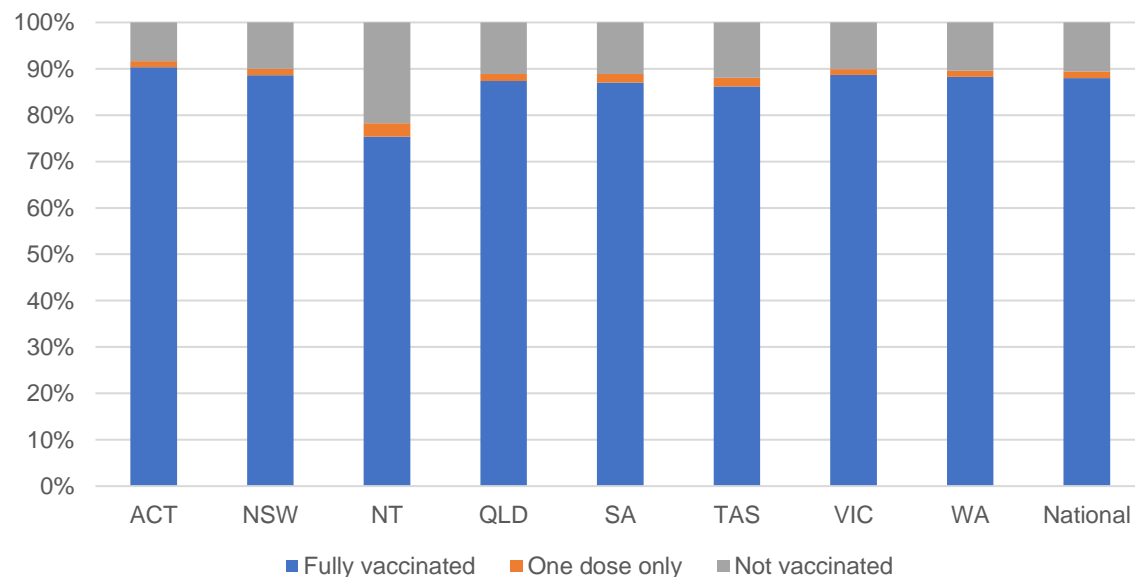
National Disability Insurance Scheme (NDIS) reported vaccinations

Data as at:
09 June 2022
Updated weekly

Australia's COVID-19
Vaccine Roadmap

NATIONAL	Total people with at least one dose	People fully vaccinated	Total number of individuals in cohort	% People with at least one dose	% People fully vaccinated
NDIS participants living in disability accommodation	21,004	20,669	23,469	89.5%	88.1%

NDIS participants in disability and aged care accommodation



Source: Linkage between National Disability Insurance Agency data and the Australian Immunisation Register. Includes participants residing in disability accommodation only.

Source: Total NDIS participant numbers as at 30 May. Participant data as at 08 June. Australian Immunisation Register data as at 08 June. Worker data as at 08 June.

NDIS workforce vaccinations

	NDIS workers with at least one dose	NDIS workers fully vaccinated	% NDIS workers with at least one dose	% NDIS workers fully vaccinated
NSW	127,085	121,461	98.3%	93.9%
VIC	117,822	114,648	98.3%	95.6%
QLD	71,448	70,571	97.8%	96.6%
WA	34,510	33,162	99.0%	95.1%
SA	35,901	33,883	98.6%	93.1%
TAS	10,808	10,577	99.5%	97.3%
ACT	12,334	12,307	99.8%	99.6%
NT	3,949	3,787	99.6%	95.6%
TOTAL	413,857	400,396	98.4%	95.2%

Source: the NDIS Commission has established a requirement for registered NDIS providers who provide intensive disability support services to report on the vaccination status of workers they employ, or otherwise engage, to deliver NDIS-funded supports and services, and who are required to be vaccinated in accordance with in-force state and territory public health orders. The statistics reflect data reported to the NDIS Commission by registered NDIS providers and should be considered indicative and subject to change

Note: Some registered NDIS providers are yet to report on the vaccination status of their workforce. The NDIS Commission is working with those providers around reporting requirements.

Remaining workers not included include those exempt from vaccination requirements, workers whose vaccination status is not yet verified by the provider (such as workers on leave) and provider reporting anomalies.

Residential aged care vaccination rollout

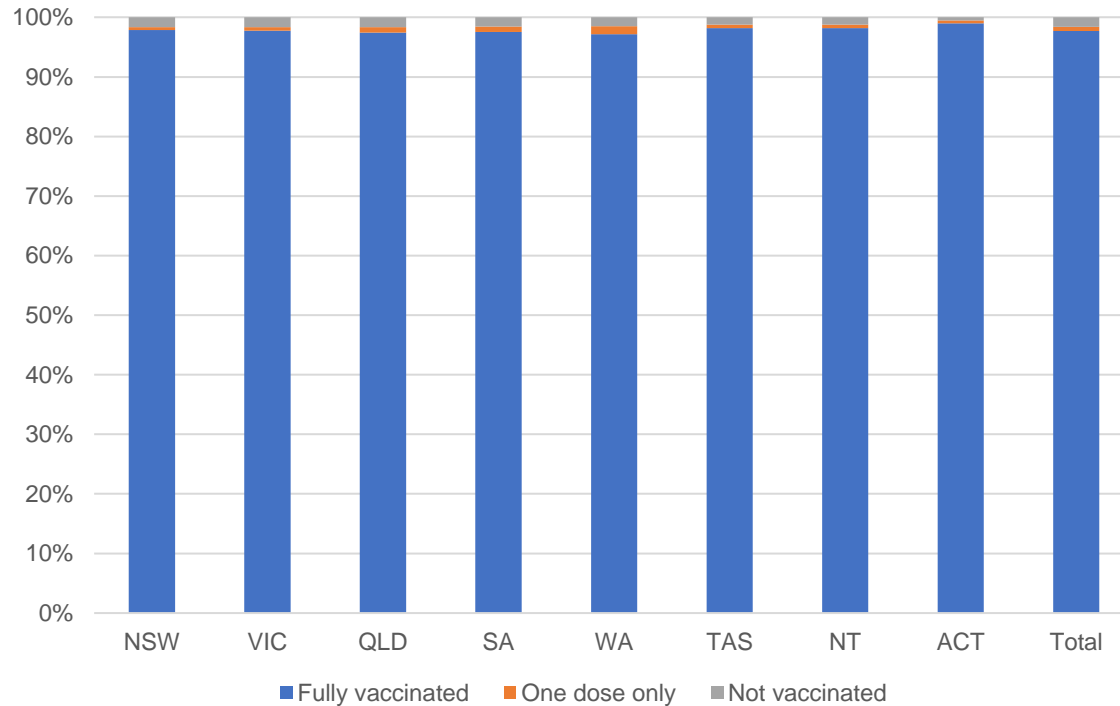
Data as at:
09 June 2022
Updated weekly

Residential aged care facilities status

177,040 **178,323**

People fully vaccinated People with at least one dose

Aged care resident vaccinations



Aged care worker vaccinations

Jurisdictions	Total workers with at least one dose	Workers fully vaccinated	% Workers with at least one dose	% Workers fully vaccinated
NSW	77,506	77,493	99.9%	99.8%
VIC	70,702	70,700	99.5%	99.5%
QLD	48,493	48,488	99.6%	99.6%
SA	27,327	27,316	100.0%	100.0%
WA	24,484	24,480	100.0%	100.0%
TAS	7,639	7,638	100.0%	100.0%
NT	933	933	100.0%	100.0%
ACT	2,907	2,907	100.0%	100.0%
Total	259,991	259,955	99.8%	99.7%

Source: Residential aged care provider self-reported COVID-19 vaccination information

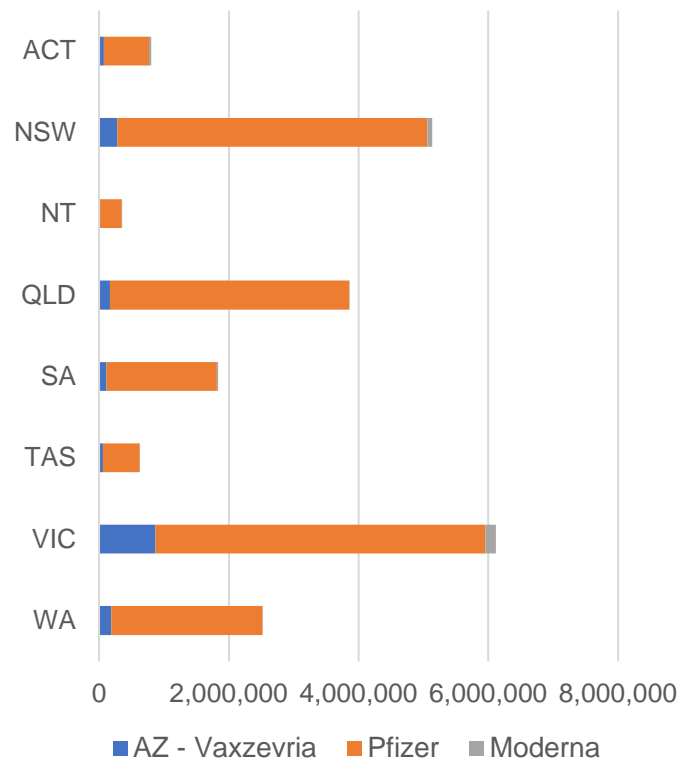
*Status updates are provided by facilities at least once per week. Reporting is updated Monday to Friday to encompass different facility updates being made on different days.

Data is sourced directly from Aged Care Service Providers and is not drawn or closely aligned with data from AIR due to inconsistencies and potential lags in uploading of records.

Data as at:
14 Jun 2022

Jurisdiction administered

Total vaccine doses administered in State and Territory clinics as at 14 June



21,252,829 total vaccine doses administered in State and Territory clinics as at 14 June
 + **4,344** recorded in the last 24 hours
 + **24,887** recorded in the last 7 days

NSW
5,135,184
 (+502 daily increase)

VIC
6,120,728
 (+1,389 daily increase)

QLD
3,858,033
 (+461 daily increase)

WA
2,525,935
 (+625 daily increase)

TAS
626,935
 (+130 daily increase)

SA
1,837,321
 (+594 daily increase)

ACT
802,089
 (+548 daily increase)

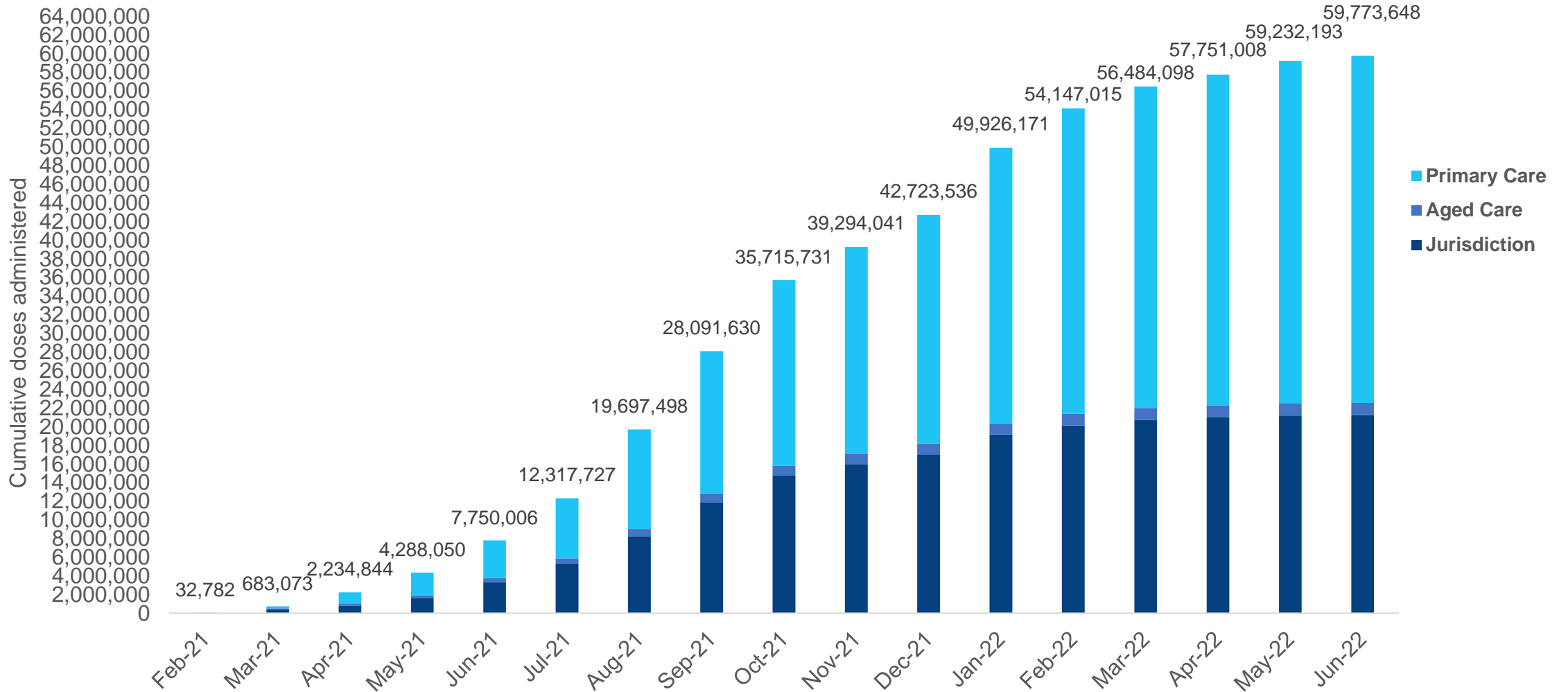
NT
346,604
 (+95 daily increase)

*Sourced from the Australian Immunisation Register. Numbers are calculated as difference in daily cumulative reported numbers to allow for historical corrections.

Source: Australian Immunisation Register

Cumulative doses administered by channel

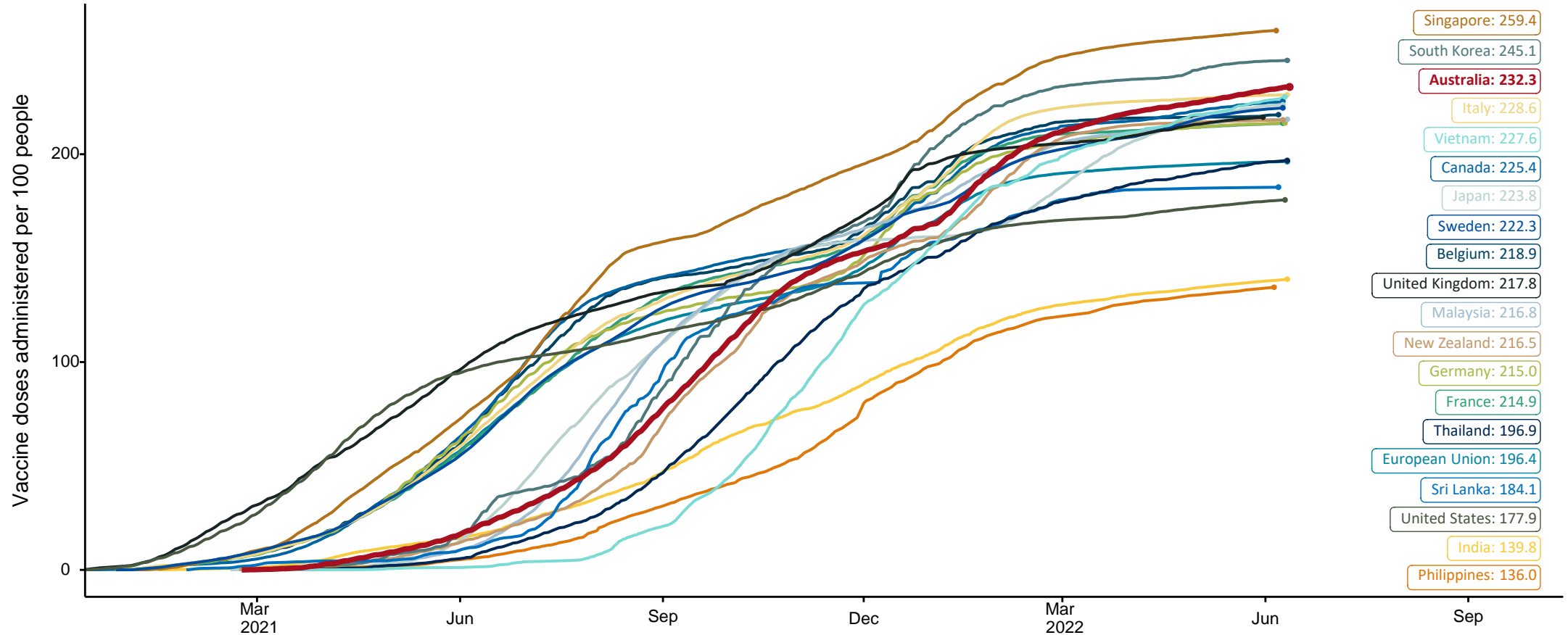
Data as at:
14 Jun 2022



Source: Australian Immunisation Register

COVID-19 vaccine doses per 100, Australia and select countries

Data as at:
12 June 2022
Updated weekly

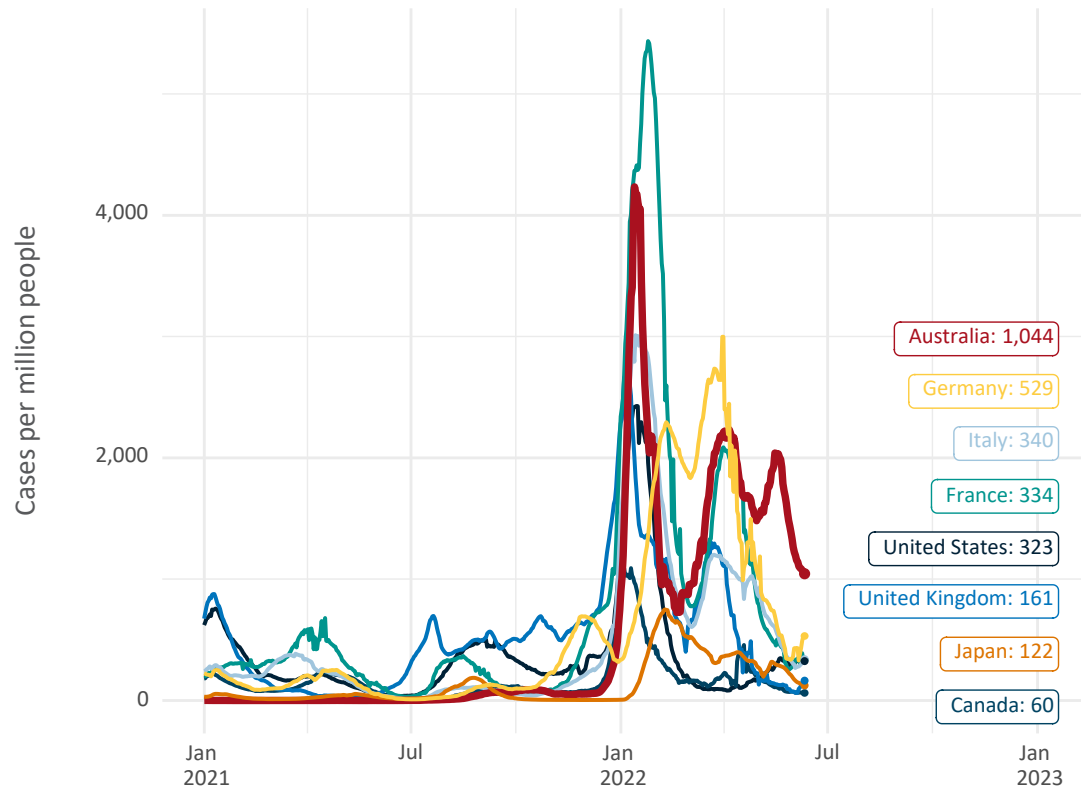


Note: From 11 January 2022, data for Australia includes all doses administered to people 5 and over. Prior to 11 January, data was for 12 and over.
Source: Department of Health (Australia), Our World in Data (international)
Latest data: 12 June

Data as at:
12 June 2022
Updated weekly

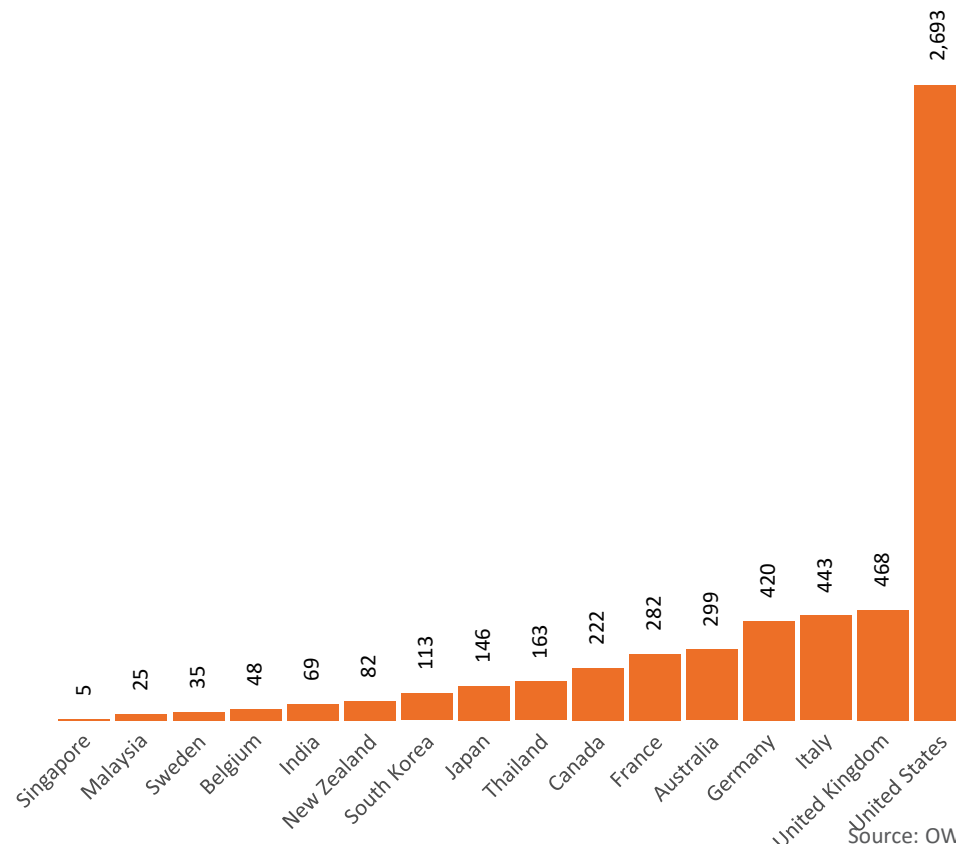
International data – COVID-19

New daily cases per million since 2021, Australia and G7 countries
Smoothed - 7 day average



Source: OWID
Data downloaded: 13 Jun 2022 08:51
Latest data: 11 Jun 2022

COVID-19 deaths in past 7 days - Australia and select countries



Source: OWID
Data downloaded: 13 Jun 2022 08:53
Latest data: 11 Jun 2022