



**Australian Government**  
**Operation COVID Shield**

# COVID-19 Vaccine Roll-out

14 June 2022

Data as at:  
13 Jun 2022

## Total vaccine doses



**59,722,358** total vaccine  
doses administered nationally as at 13 June  
**+14,971** recorded in the last 24 hours



**20,087,977**

people have had at least one  
dose

**>95%**

of people over the age of 16  
have had at least one dose



**19,752,733**

people are fully vaccinated

**>95%**

of people over the age of 16 are  
fully vaccinated



**13,790,767**

people over the age of 16  
who have received three or  
more doses

**NSW**  
**18,520,452**  
(+1,083 daily  
increase)

**VIC**  
**15,675,979**  
(+1,262 daily  
increase)

**QLD**  
**11,296,409**  
(+7,331 daily  
increase)

**WA**  
**6,573,566**  
(+4,613 daily  
increase)

**TAS**  
**1,352,752**  
(+127 daily  
increase)

**SA**  
**4,147,311**  
(+221 daily  
increase)

**ACT**  
**1,563,797**  
(+323 daily  
increase)

**NT**  
**592,092**  
(+11 daily  
increase)

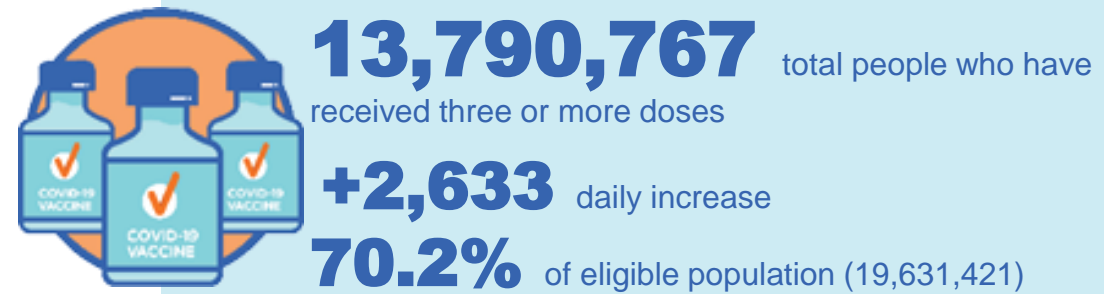
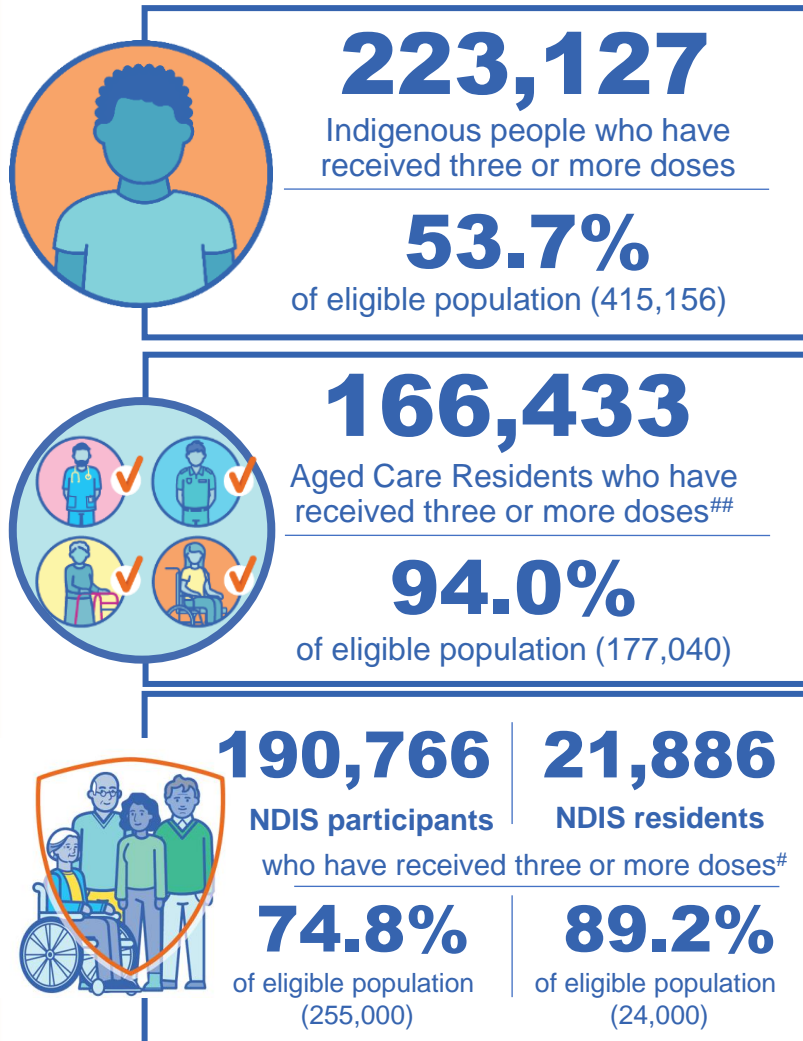
\*Administration state breakdown indicates state in which a vaccine was administered

\*\*Overall dose count includes instances of more than three doses per person in a small number of cases.

Source: Australian Immunisation Register

Data as at:  
13 Jun 2022

## Booster Vaccinations



	Number of People	Daily Increase	% of Eligible
NSW	4,211,756	300	67.7%
VIC	3,683,661	306	72.5%
QLD	2,391,275	1,277	63.3%
WA	1,696,493	604	83.1%
SA	984,739	40	73.7%
TAS	315,556	35	72.7%
ACT	272,898	28	78.7%
NT	130,990	<10	77.9%

\*People may belong to multiple groups and could be represented in the above breakdowns multiple times.  
# NDIS participants data as at 9 June 2022. ## Aged Care Residents data as at 10 June 2022.

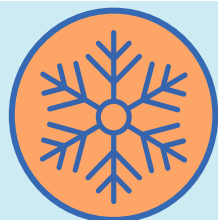
Source: Australian Immunisation Register

**119,523** doses administered to persons residing in other territories or with missing residential information

# Winter / Fourth Doses

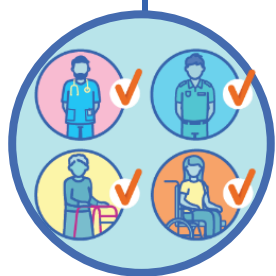
Data as at:  
13 Jun 2022

Australia's COVID-19  
Vaccine Roadmap



**1,925,150** total people (16+) who have received four or more doses

**+10,786** daily increase



**1,708,378**

People aged 65+ who have  
received four or more doses

**52.7%**

of eligible population (3,243,833)

	Number of People 16+	Daily Increase
ACT	38,706	34
NSW	620,134	630
NT	8,415	<10
QLD	367,956	5,354
SA	154,645	155
TAS	53,501	97
VIC	482,225	783
WA	190,222	3,681

**9,346** doses administered to persons  
residing in other territories or with  
missing residential information

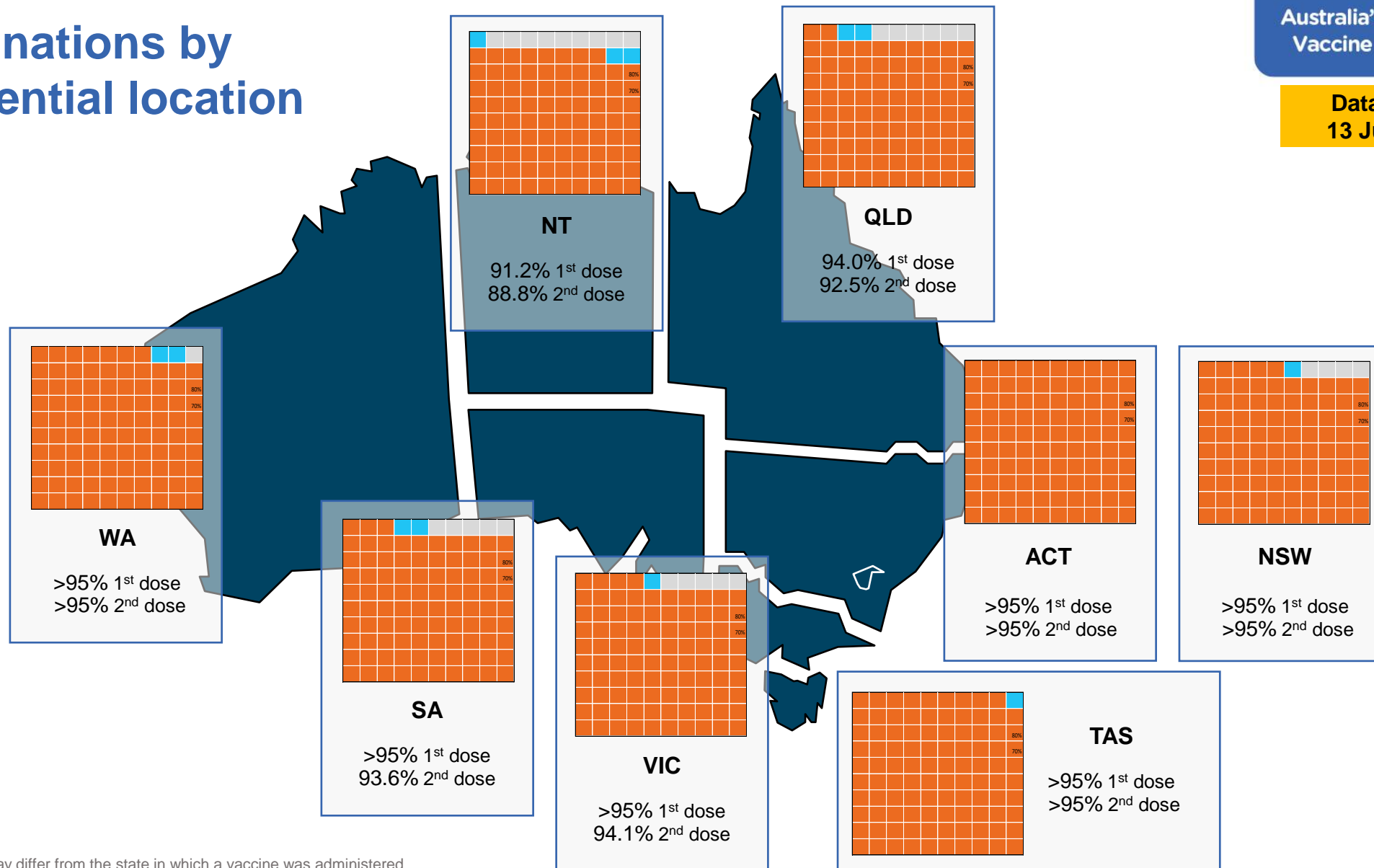
\*People become eligible for a winter booster four months after their third dose.

Source: Australian Immunisation Register

# Vaccinations by residential location

Australia's COVID-19  
Vaccine Roadmap

Data as at:  
13 Jun 2022



\*Residential state may differ from the state in which a vaccine was administered

# Commonwealth and Jurisdiction vaccine doses administered

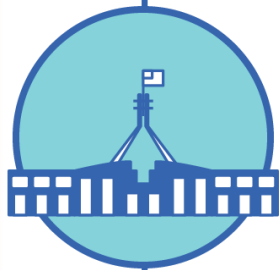
Data as at:  
13 Jun 2022



**59,722,358** total vaccine  
doses administered nationally as at 13 June  
**+ 14,971** recorded in the last 24 hours



**21,248,485**  
doses administered by state  
and territory facilities  
**+ 1,529**  
recorded in the last 24 hours



**38,473,873**  
doses administered by  
commonwealth facilities  
**+ 13,442**  
recorded in the last 24 hours

**37,164,685** total vaccine doses  
administered in primary care settings  
**1,309,188** total vaccine doses  
administered in aged care and disability  
settings

NSW	Jurisdictions	Commonwealth
Cumulative	5,134,682	13,385,770
Daily increase	228	855

VIC	Jurisdictions	Commonwealth
Cumulative	6,119,339	9,556,640
Daily increase	247	1,015

QLD	Jurisdictions	Commonwealth
Cumulative	3,857,572	7,438,837
Daily increase	203	7,128

WA	Jurisdictions	Commonwealth
Cumulative	2,525,310	4,048,256
Daily increase	521	4,092

TAS	Jurisdictions	Commonwealth
Cumulative	626,805	725,947
Daily increase	<10	126

SA	Jurisdictions	Commonwealth
Cumulative	1,836,727	2,310,584
Daily increase	64	157

ACT	Jurisdictions	Commonwealth
Cumulative	801,541	762,256
Daily increase	254	69

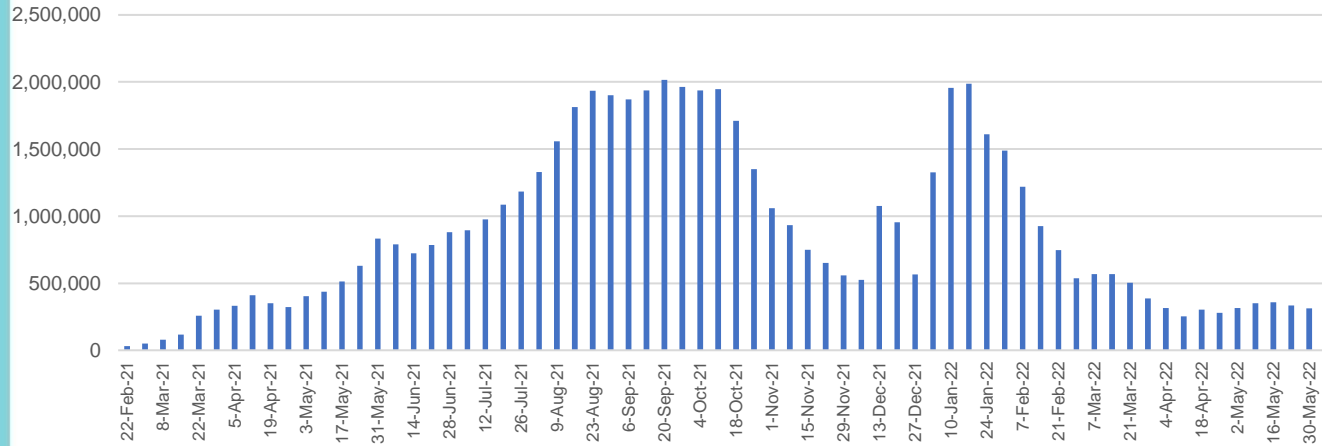
NT	Jurisdictions	Commonwealth
Cumulative	346,509	245,583
Daily increase	11	<10

# Vaccine milestone charts

Data as at:  
13 Jun 2022

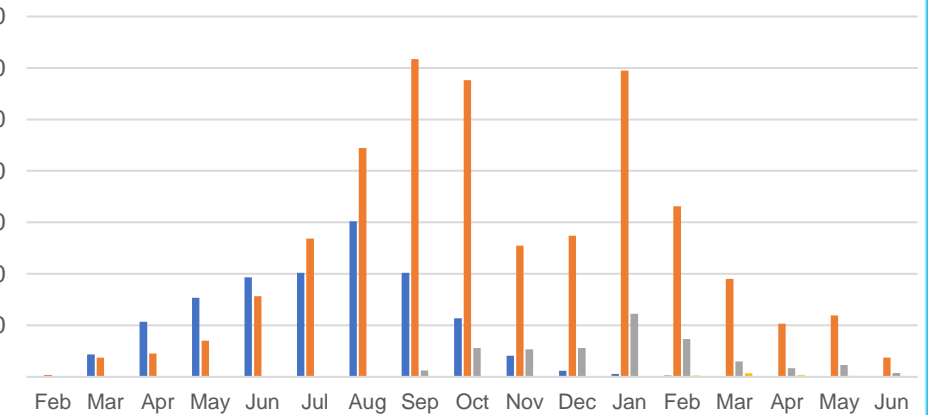
Australia's COVID-19  
Vaccine Roadmap

## Doses Administered by Week

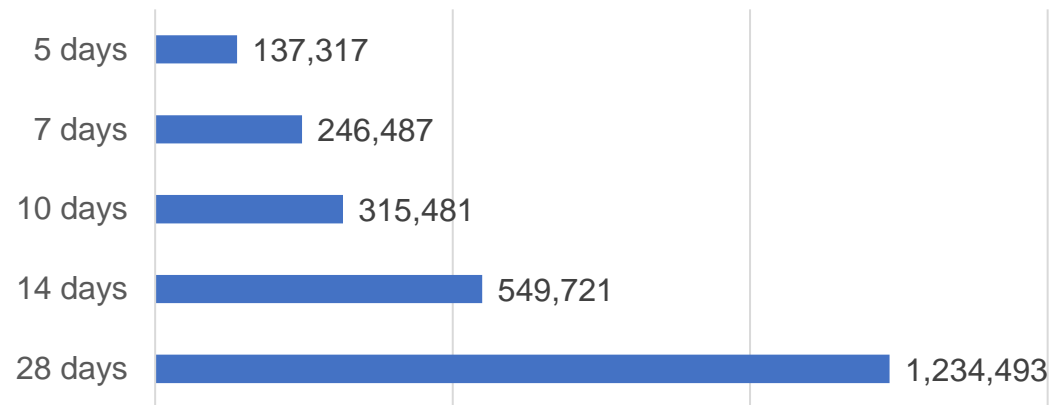


## Doses by administration month and vaccine type

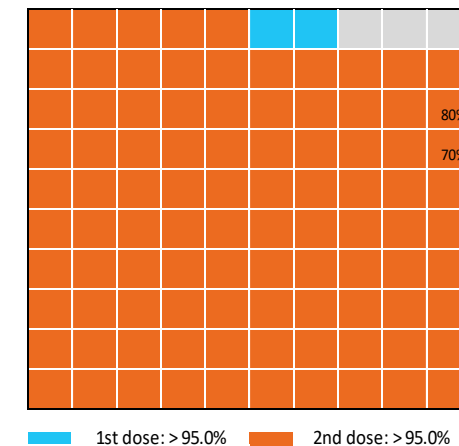
AZ - Vaxzevria Pfizer Moderna Novavax



## Doses Reported



## Eligible population percentage coverage



\*Each square represents 1% of the national population.  
Squares are filled as milestones are achieved.

\*Sourced from the Australian Immunisation Register.

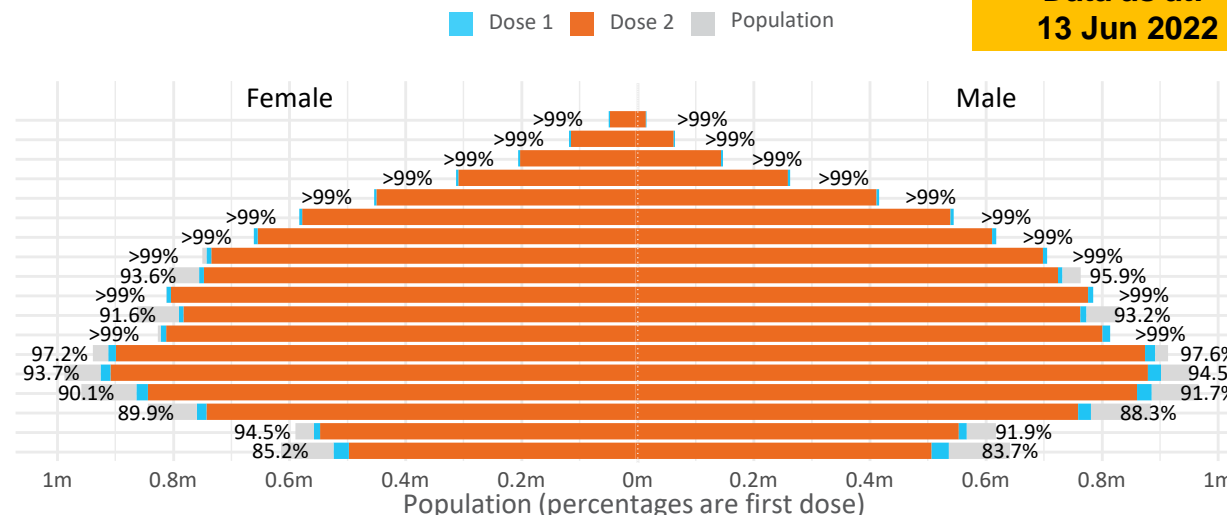
Data as at:  
13 Jun 2022

# Doses by age and sex

First and second doses by age and sex

	16+	50+	12-15	5-11
Dose 1	97.42% (20,087,977 doses / 20,619,959 people)	>99% (8,911,256 doses / 8,749,703 people)	84.46% (1,050,695 doses / 1,243,990 people)	52.49% (1,195,037 doses / 2,276,638 people)
Dose 2	95.79% (19,752,733 doses / 20,619,959 people)	>99% (8,804,030 doses / 8,749,703 people)	79.96% (994,739 doses / 1,243,990 people)	39.16% (891,517 doses / 2,276,638 people)

Age	Dose 1	Dose 2
95+	64,838 (>99%)	61,408 (>99%)
90-94	181,002 (>99%)	175,484 (>99%)
85-89	349,634 (>99%)	342,832 (>99%)
80-84	570,347 (>99%)	563,174 (>99%)
75-79	862,521 (>99%)	854,125 (>99%)
70-74	1,118,198 (>99%)	1,106,921 (>99%)
65-69	1,269,235 (>99%)	1,254,619 (>99%)
60-64	1,436,718 (>99%)	1,420,342 (98.9%)
55-59	1,475,620 (94.9%)	1,458,964 (93.8%)
50-54	1,583,143 (>99%)	1,566,161 (>99%)
45-49	1,551,007 (92.5%)	1,532,608 (91.4%)
40-44	1,623,674 (>99%)	1,599,673 (98.7%)
35-39	1,792,594 (97.7%)	1,760,447 (95.9%)
30-34	1,818,556 (94.5%)	1,776,705 (92.4%)
25-29	1,743,555 (91.5%)	1,695,876 (89.0%)
20-24	1,532,281 (89.5%)	1,492,301 (87.2%)
16-19	1,115,054 (93.2%)	1,091,093 (91.2%)
12-15	1,050,695 (84.5%)	994,739 (80.0%)



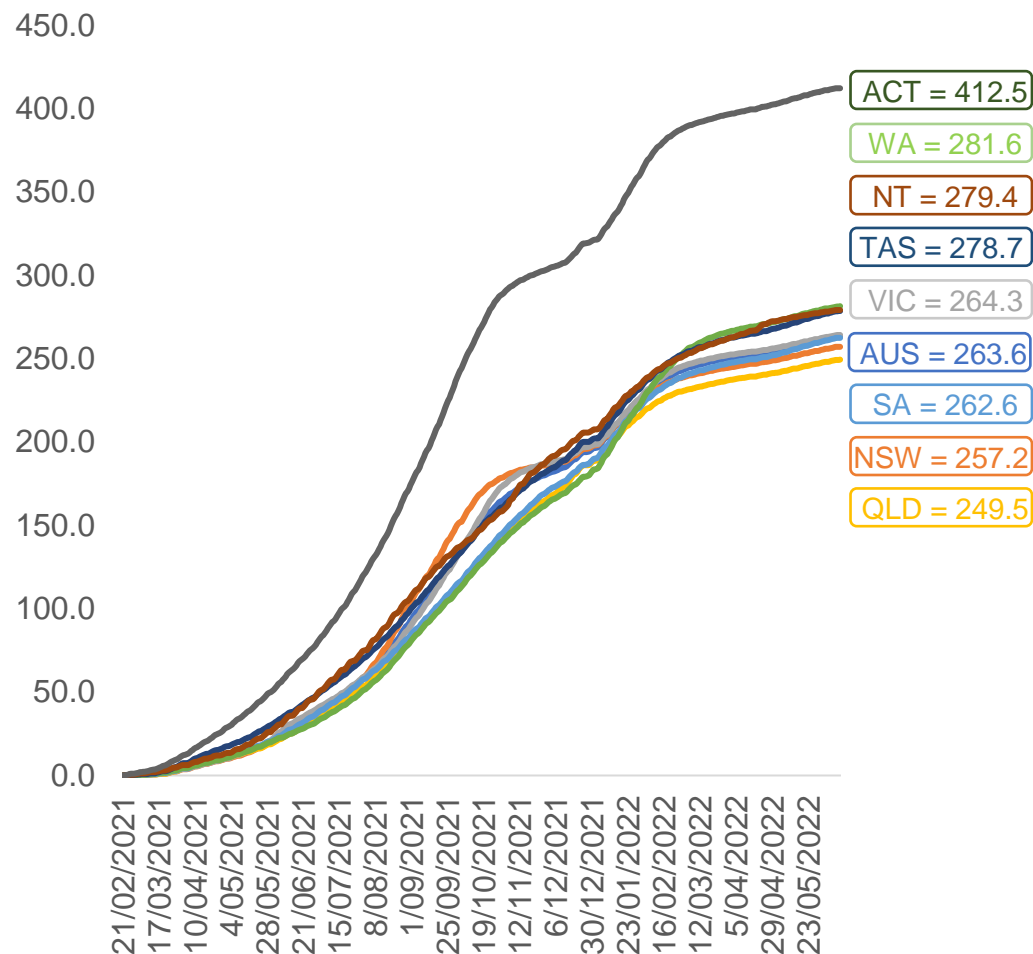
	AUS	ACT	NSW	NT	QLD	SA	TAS	VIC	WA
16 and over - dose 1	20,087,977	353,073	6,335,637	173,880	3,867,632	1,377,214	445,590	5,168,872	2,098,109
16 and over - dose 2	19,752,733	347,368	6,238,157	169,210	3,803,867	1,347,990	436,563	5,091,011	2,066,957
16 and over - population	20,619,959*	344,037	6,565,651	190,571	4,112,707	1,440,400	440,172	5,407,574	2,114,978
16 and over % with dose 1	97.42%	>99%	96.50%	91.24%	94.04%	95.61%	>99%	95.59%	>99%
16 and over % with dose 2	95.79%	>99%	95.01%	88.79%	92.49%	93.58%	>99%	94.15%	97.73%
5 to 11 - dose 1	1,195,037	31,845	356,821	13,172	207,017	83,826	28,520	325,285	140,770
5 to 11 - dose 2	891,517	27,162	271,884	8,676	148,663	62,627	22,967	243,709	101,173
5 to 11 - population	2,276,638	39,789	716,460	24,750	478,731	148,816	45,033	578,499	244,154
5 to 11 % with dose 1	52.49%	80.03%	49.80%	53.22%	43.24%	56.33%	63.33%	56.23%	57.66%
5 to 11 % with dose 2	39.16%	68.27%	37.95%	35.05%	31.05%	42.08%	51.00%	42.13%	41.44%
12 to 15 - dose 1	1,050,695	20,101	323,032	10,774	205,947	68,236	22,872	274,608	115,572
12 to 15 - dose 2	994,739	19,569	308,622	9,713	192,509	64,475	21,746	262,775	107,006
12 to 15 - population	1,243,990	19,693	390,330	13,060	270,146	82,747	26,308	308,611	132,869
12 to 15 % with dose 1	84.46%	>99%	82.76%	82.50%	76.24%	82.46%	86.94%	88.98%	86.98%
12 to 15 % with dose 2	79.96%	>99%	79.07%	74.37%	71.26%	77.92%	82.66%	85.15%	80.53%

\*National population will not equal sum of listed jurisdictions due to a small number of people counted in national population residing in some 'other' territories. Sum of state doses will not add to national total as some records are unable to be geocoded to a State or Territory.  
Doses sourced from Australian Immunisation Register, population from ABS ERP June 2020



# Vaccinations by location

Cumulative total doses administered vs eligible state populations\*

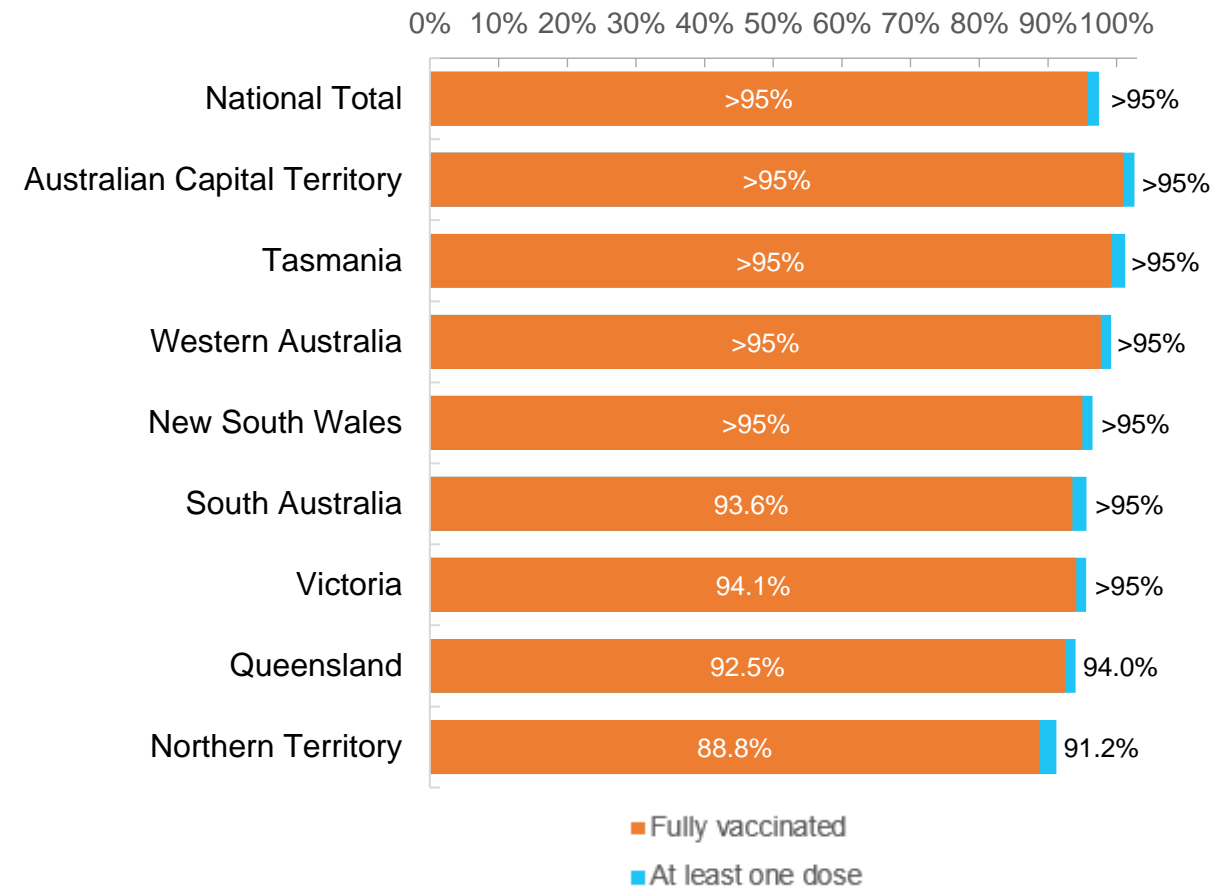


\*Not an indication of percentage vaccinated, numbers will exceed 100 due to multiple doses required per person of the population. All doses are included for those aged 12 and above, and are based on vaccination provider location.

Data as at:  
13 Jun 2022

Australia's COVID-19  
Vaccine Roadmap

First and Second Doses by residential location



# Aboriginal and Torres Strait Islander peoples

## Number of people vaccinated

Data as at:  
07 Jun 2022  
Updated weekly

Australia's COVID-19  
Vaccine Roadmap



**442,874**

people over the age of 16  
have had at least one dose

**85.0%**

of people over the age of 16  
have had at least one dose



**424,313**

people over the age of 16  
are fully vaccinated

**81.4%**

of people over the age of 16 are  
fully vaccinated



People aged 12 – 15 years

**48,180**

**68.1%**  
At least one dose

**42,347**

**59.9%**  
Fully vaccinated

### 178 Aboriginal community controlled health services (ACCHS)

0#	50	27	44	12	3	21	21
ACT	NSW	NT	QLD	SA	TAS	VIC	WA

Medicare Address State <sup>##</sup>	Individuals Dose 1	Individuals Dose 1 %	Individuals Dose 2	Individuals Dose 2 %
Australian Capital Territory	4,796	91.7%	4,675	89.4%
New South Wales	136,052	87.3%	132,990	85.4%
Northern Territory	41,483	89.7%	39,499	85.4%
Queensland	116,374	81.8%	110,974	78.0%
South Australia	20,068	80.5%	18,671	74.9%
Tasmania	13,947	88.8%	13,538	86.2%
Victoria	35,648	90.4%	34,880	88.5%
Western Australia	53,657	86.7%	49,896	80.6%
Unknown/Other Territories	20,849	70.0%	19,190	64.4%
<b>Totals</b>	<b>442,874</b>	<b>85.0%</b>	<b>424,313</b>	<b>81.4%</b>

Source: Australian Immunisation Register

\*Identifying as Aboriginal and Torres Strait Islander is optional and the estimated population may be under reported.

\*\*Includes all Aboriginal and Torres Strait Islander peoples who have received a vaccination, not limited to those administered in an ACCHS setting

#ACCHS in the ACT are currently operating as a Commonwealth Vaccine Clinics so not included to avoid double counting

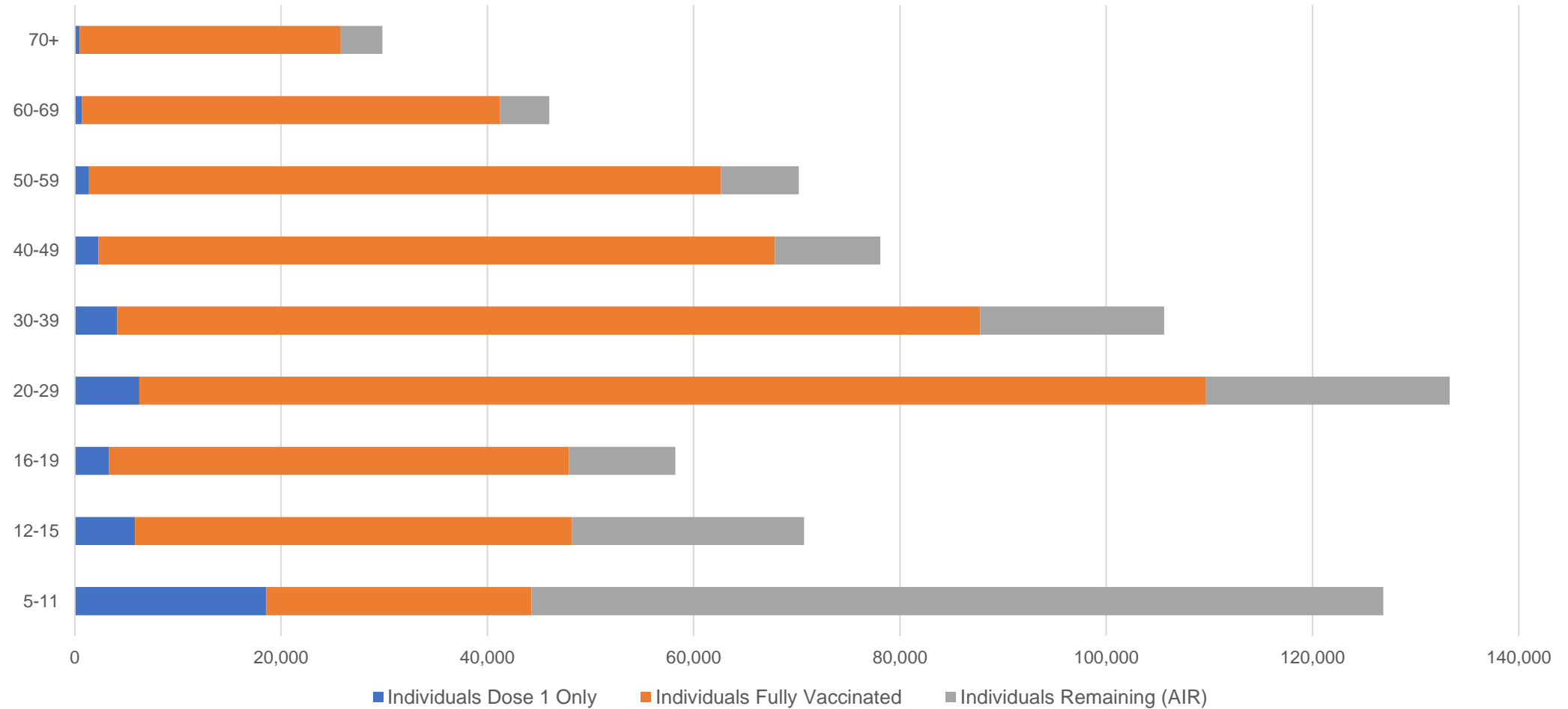
##The above table includes all identified Aboriginal and Torres Strait Islander people who are aged 16 and above by their state of residence.

# Aboriginal and Torres Strait Islander peoples

## Number of people vaccinated by age

Data as at:  
07 Jun 2022  
Updated weekly

Australia's COVID-19  
Vaccine Roadmap



Source: Australian Immunisation Register

# Commonwealth primary care

Data as at:  
13 Jun 2022

Australia's COVID-19  
Vaccine Roadmap



## Primary care vaccine administration sites

<b>5,711</b>	<b>128</b>	<b>178</b>	<b>3,611</b>
GPs	CVCs	ACCHS	Pharmacies



**37,164,685** total vaccine doses administered  
primary care settings as at 13 June  
**+ 13,298** recorded in the last 24 hours

## Primary care vaccinations by provider type

	Doses administered	Daily increase	7 day increase
General Practice* includes other Commonwealth	29,747,731	8,958	153,331
Pharmacy	7,416,954	4,340	63,185

**NSW**  
**12,816,019**  
(+847 daily increase)

**VIC**  
**9,226,075**  
(+954 daily increase)

**QLD**  
**7,153,814**  
(+7,160 daily increase)

**WA**  
**3,908,810**  
(+3,940 daily increase)

**TAS**  
**704,864**  
(+136 daily increase)

**SA**  
**2,228,847**  
(+120 daily increase)

**ACT**  
**587,163**  
(+60 daily increase)

**NT**  
**220,169**  
(**<10** daily increase)

**318,924**

doses administered to persons  
residing in other territories or with  
missing residential information

\*General practice includes Commonwealth Vaccination Clinics, Aboriginal Community Health Centres, Royal Flying Doctor Service and other Commonwealth vaccination facilities

Source: Australian Immunisation Register

Data as at:  
13 Jun 2022

# Commonwealth aged care and disability doses administered



**1,309,188** (+ 144 last 24 hours)

Total vaccine doses administered in aged care and disability facilities as at 13 June

Number of doses administered as part of the Commonwealth aged and disability care rollout

**NSW**  
**569,978**  
(**<10** daily increase)

**VIC**  
**246,206**  
(**+24** daily increase)

**QLD**  
**208,238**  
(**<10** daily increase)

**WA**  
**110,921**  
(**+97** daily increase)

**TAS**  
**23,596**  
(**<10** daily increase)

**SA**  
**85,908**  
(**<10** daily increase)

**ACT**  
**17,808**  
(**<10** daily increase)

**NT**  
**7,683**  
(**<10** daily increase)

**38,850**

doses administered to persons residing in other territories or with missing residential information

\*Sourced from the Australian Immunisation Register. Includes all persons vaccinated at participating residential aged care, disability and related industry settings.

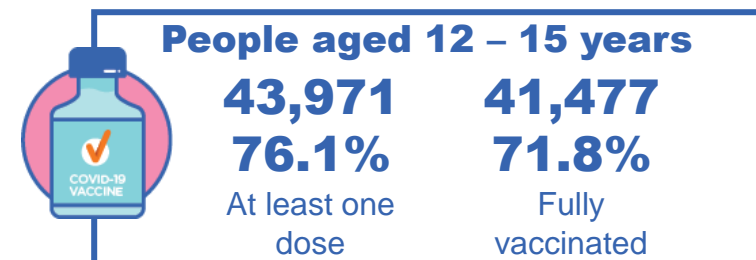
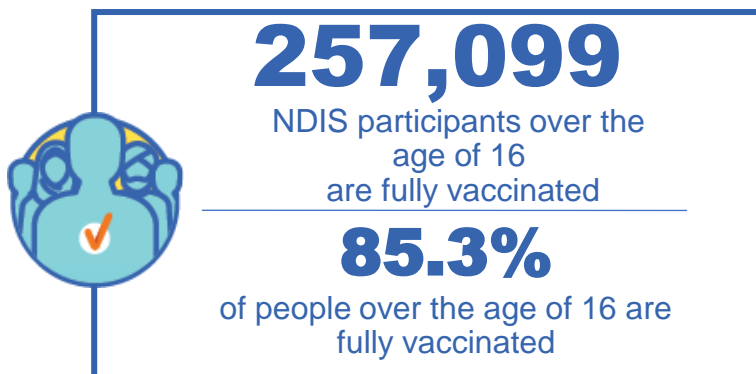
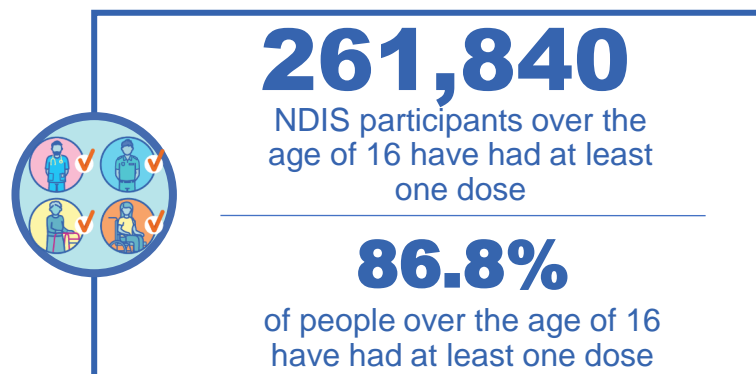
\*\*State level breakdown indicates the residential location and may not align to the state in which the vaccination occurred.

Source: Australian Immunisation Register

# National Disability Insurance Scheme (NDIS) reported vaccinations

Data as at:  
09 June 2022  
Updated weekly

Australia's COVID-19  
Vaccine Roadmap



## NDIS participant vaccinations

	People aged 16+ with at least one dose	People aged 16+ fully vaccinated	% People aged 16+ with at least one dose	% People aged 16+ fully vaccinated
ACT	4,931	4,865	88.9%	87.7%
NSW	80,199	78,915	87.3%	85.9%
NT	2,271	2,202	77.8%	75.4%
QLD	51,866	50,885	85.1%	83.5%
SA	21,433	20,931	84.6%	82.6%
TAS	6,549	6,397	87.1%	85.1%
VIC	69,568	68,397	88.0%	86.5%
WA	25,023	24,507	88.1%	86.3%
National	261,840	257,099	86.8%	85.3%

Source: Linkage between National Disability Insurance Agency data and the Australian Immunisation Register. Total NDIS participant numbers as at 30 May. Australian Immunisation Register data as at 08 June. Includes all participants regardless of residence type.

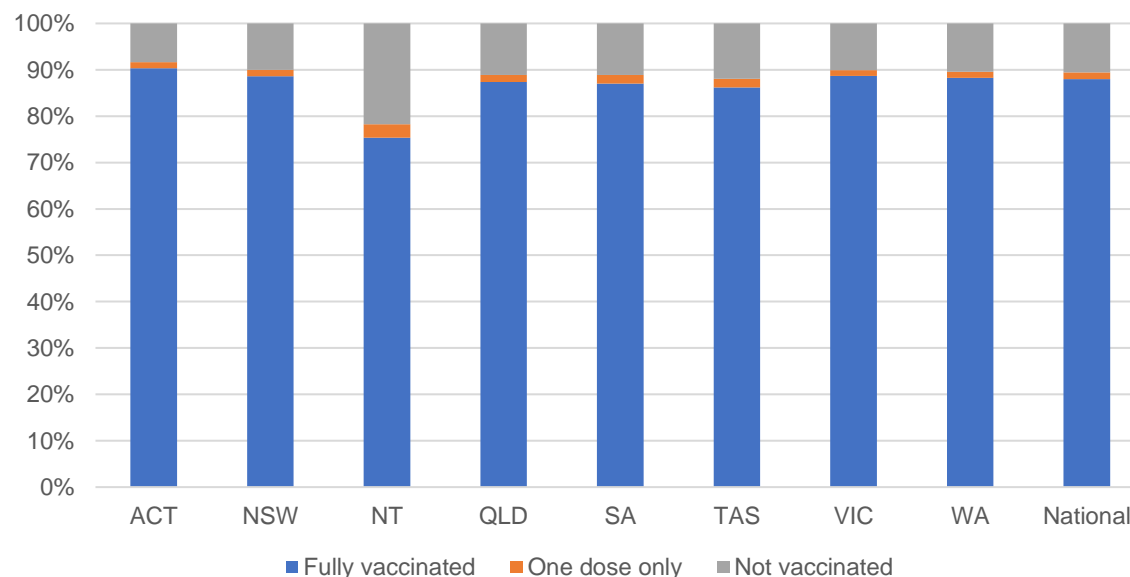
# National Disability Insurance Scheme (NDIS) reported vaccinations

Data as at:  
09 June 2022  
Updated weekly

Australia's COVID-19  
Vaccine Roadmap

NATIONAL	Total people with at least one dose	People fully vaccinated	Total number of individuals in cohort	% People with at least one dose	% People fully vaccinated
NDIS participants living in disability accommodation	21,004	20,669	23,469	89.5%	88.1%

## NDIS participants in disability and aged care accommodation



Source: Linkage between National Disability Insurance Agency data and the Australian Immunisation Register. Includes participants residing in disability accommodation only.

Source: Total NDIS participant numbers as at 30 May. Participant data as at 08 June. Australian Immunisation Register data as at 08 June. Worker data as at 08 June.

## NDIS workforce vaccinations

	NDIS workers with at least one dose	NDIS workers fully vaccinated	% NDIS workers with at least one dose	% NDIS workers fully vaccinated
NSW	127,085	121,461	98.3%	93.9%
VIC	117,822	114,648	98.3%	95.6%
QLD	71,448	70,571	97.8%	96.6%
WA	34,510	33,162	99.0%	95.1%
SA	35,901	33,883	98.6%	93.1%
TAS	10,808	10,577	99.5%	97.3%
ACT	12,334	12,307	99.8%	99.6%
NT	3,949	3,787	99.6%	95.6%
<b>TOTAL</b>	<b>413,857</b>	<b>400,396</b>	<b>98.4%</b>	<b>95.2%</b>

Source: the NDIS Commission has established a requirement for registered NDIS providers who provide intensive disability support services to report on the vaccination status of workers they employ, or otherwise engage, to deliver NDIS-funded supports and services, and who are required to be vaccinated in accordance with in-force state and territory public health orders. The statistics reflect data reported to the NDIS Commission by registered NDIS providers and should be considered indicative and subject to change

Note: Some registered NDIS providers are yet to report on the vaccination status of their workforce. The NDIS Commission is working with those providers around reporting requirements.

Remaining workers not included include those exempt from vaccination requirements, workers whose vaccination status is not yet verified by the provider (such as workers on leave) and provider reporting anomalies.



# Residential aged care vaccination rollout

Residential aged care facilities status

**177,040**

People fully vaccinated

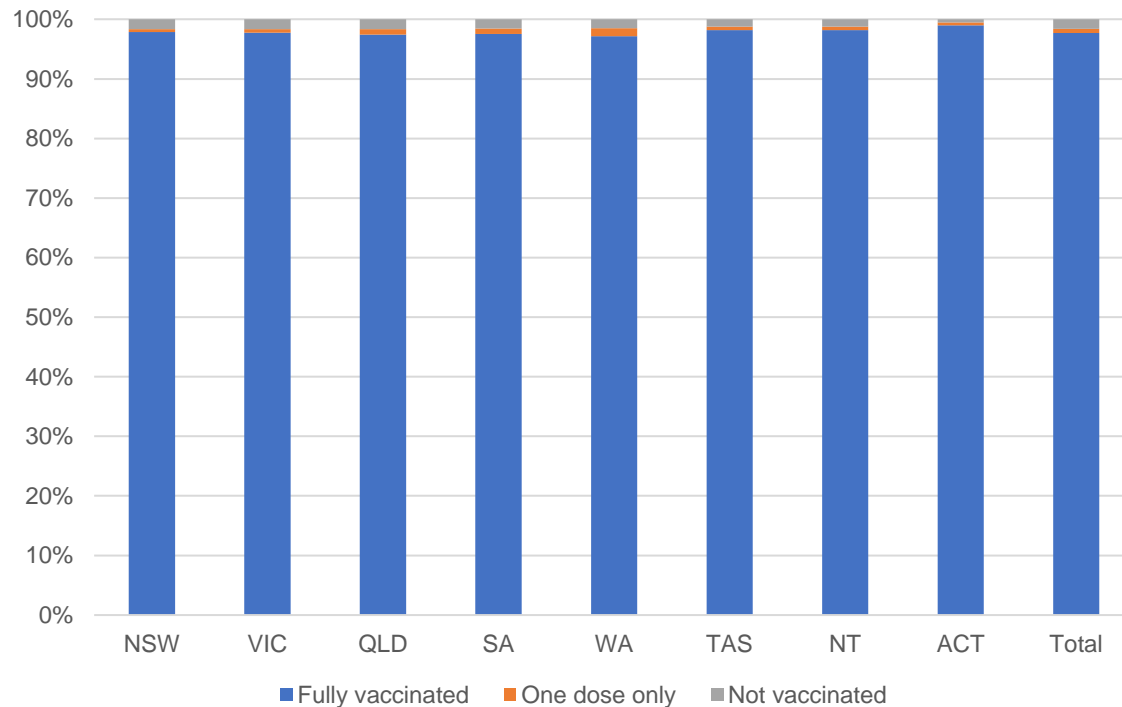
**178,323**

People with at least one dose

Australia's COVID-19 Vaccine Roadmap

Data as at:  
09 June 2022  
Updated weekly

## Aged care resident vaccinations



## Aged care worker vaccinations

Jurisdictions	Total workers with at least one dose	Workers fully vaccinated	% Workers with at least one dose	% Workers fully vaccinated
NSW	77,506	77,493	99.9%	99.8%
VIC	70,702	70,700	99.5%	99.5%
QLD	48,493	48,488	99.6%	99.6%
SA	27,327	27,316	100.0%	100.0%
WA	24,484	24,480	100.0%	100.0%
TAS	7,639	7,638	100.0%	100.0%
NT	933	933	100.0%	100.0%
ACT	2,907	2,907	100.0%	100.0%
Total	259,991	259,955	99.8%	99.7%

Source: My Aged Care Portal vaccination progress

\*Status updates are provided by facilities at least once per week. Reporting is updated Monday to Friday to encompass different facility updates being made on different days.

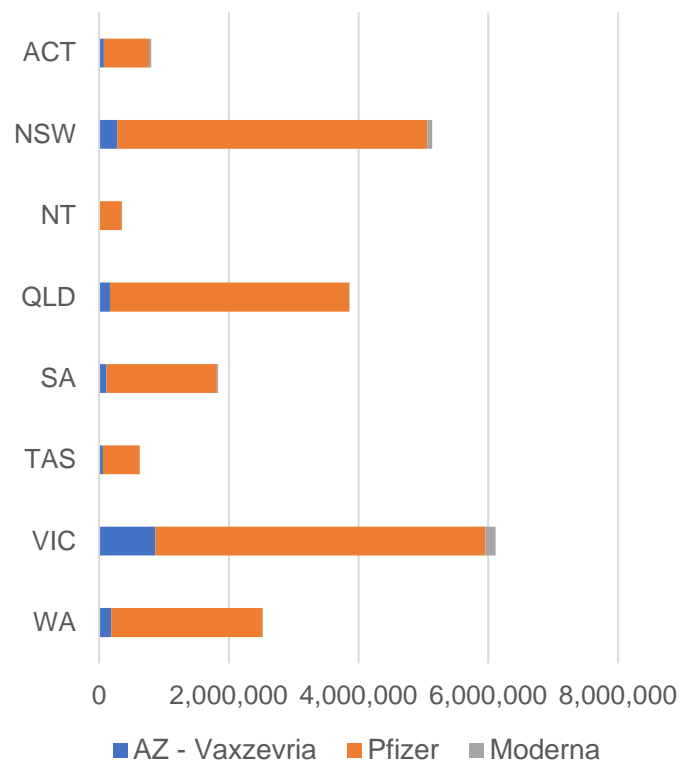
Data is sourced directly from Aged Care Service Providers and is not drawn or closely aligned with data from AIR due to inconsistencies and potential lags in uploading of records.



Data as at:  
13 Jun 2022

## Jurisdiction administered

Total vaccine doses administered in State and Territory clinics as at 13 June



**21,248,485** total vaccine doses administered  
in State and Territory clinics as at 13 June  
+ **1,529** recorded in the last 24 hours  
+ **24,980** recorded in the last 7 days

**NSW**  
**5,134,682**  
(+228 daily  
increase)

**VIC**  
**6,119,339**  
(+247 daily  
increase)

**QLD**  
**3,857,572**  
(+203 daily  
increase)

**WA**  
**2,525,310**  
(+521 daily  
increase)

**TAS**  
**626,805**  
(<10 daily  
increase)

**SA**  
**1,836,727**  
(+64 daily  
increase)

**ACT**  
**801,541**  
(+254 daily  
increase)

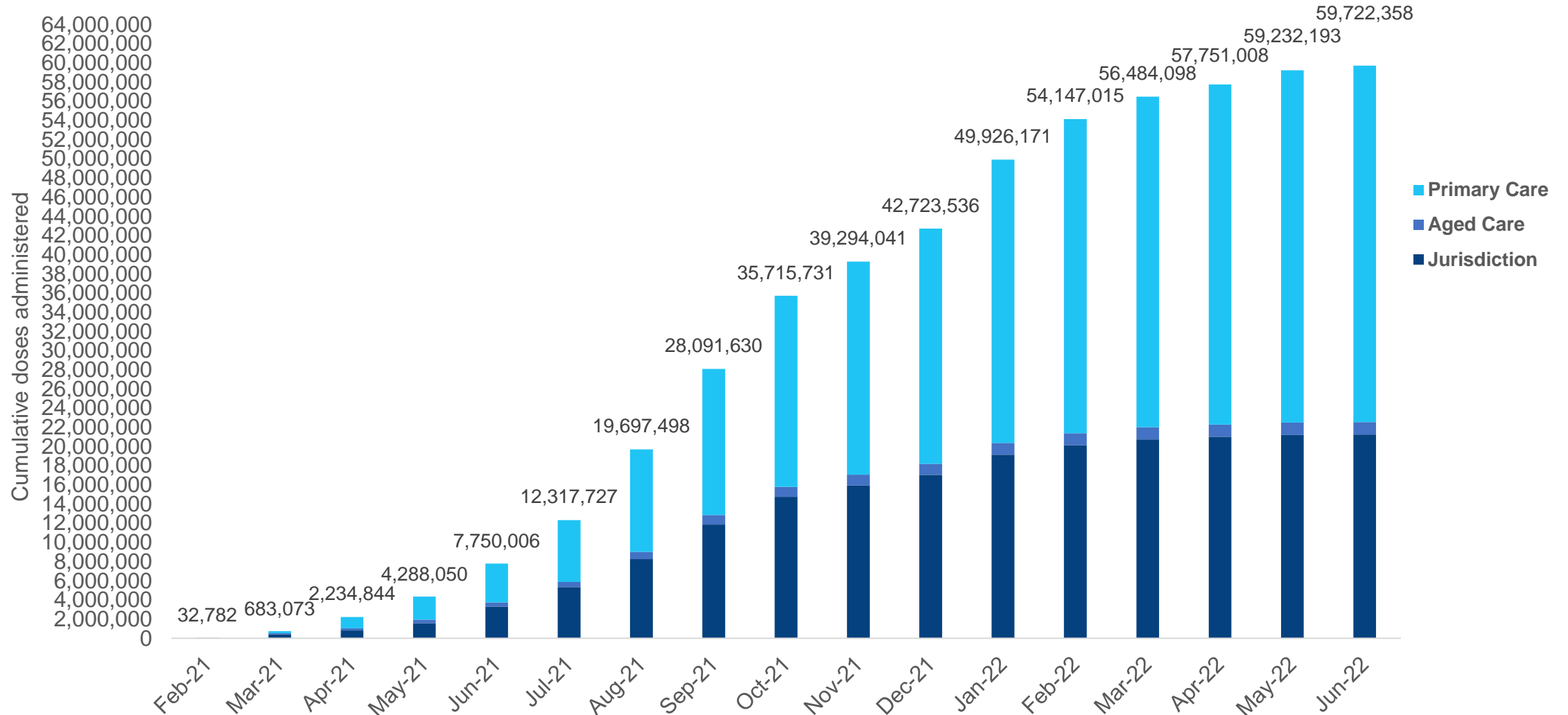
**NT**  
**346,509**  
(+11 daily  
increase)

\*Sourced from the Australian Immunisation Register. Numbers are calculated as difference in daily cumulative reported numbers to allow for historical corrections.

# Cumulative doses administered by channel

Data as at:  
13 Jun 2022

Australia's COVID-19  
Vaccine Roadmap

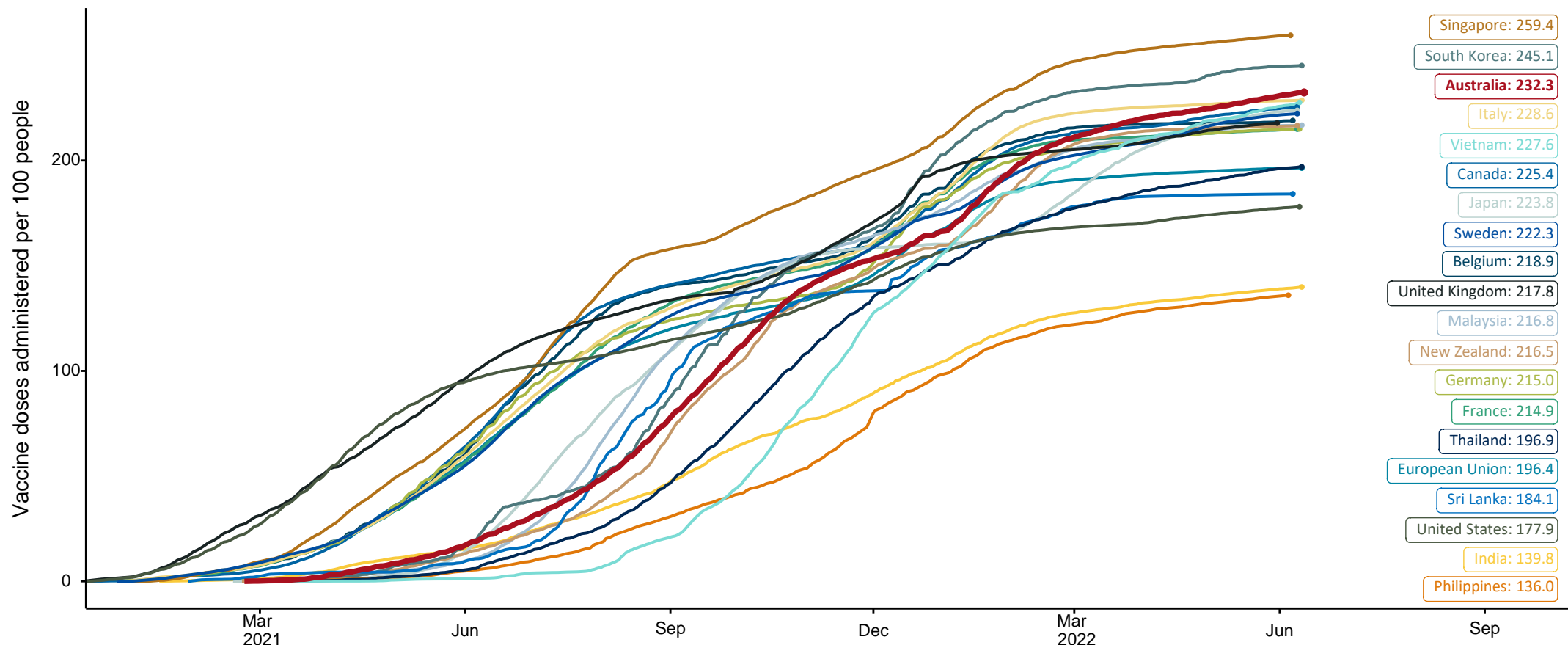


Source: Australian Immunisation Register

# COVID-19 vaccine doses per 100, Australia and select countries

Data as at:  
12 June 2022  
Updated weekly

Australia's COVID-19  
Vaccine Roadmap



Note: From 11 January 2022, data for Australia includes all doses administered to people 5 and over. Prior to 11 January, data was for 12 and over.

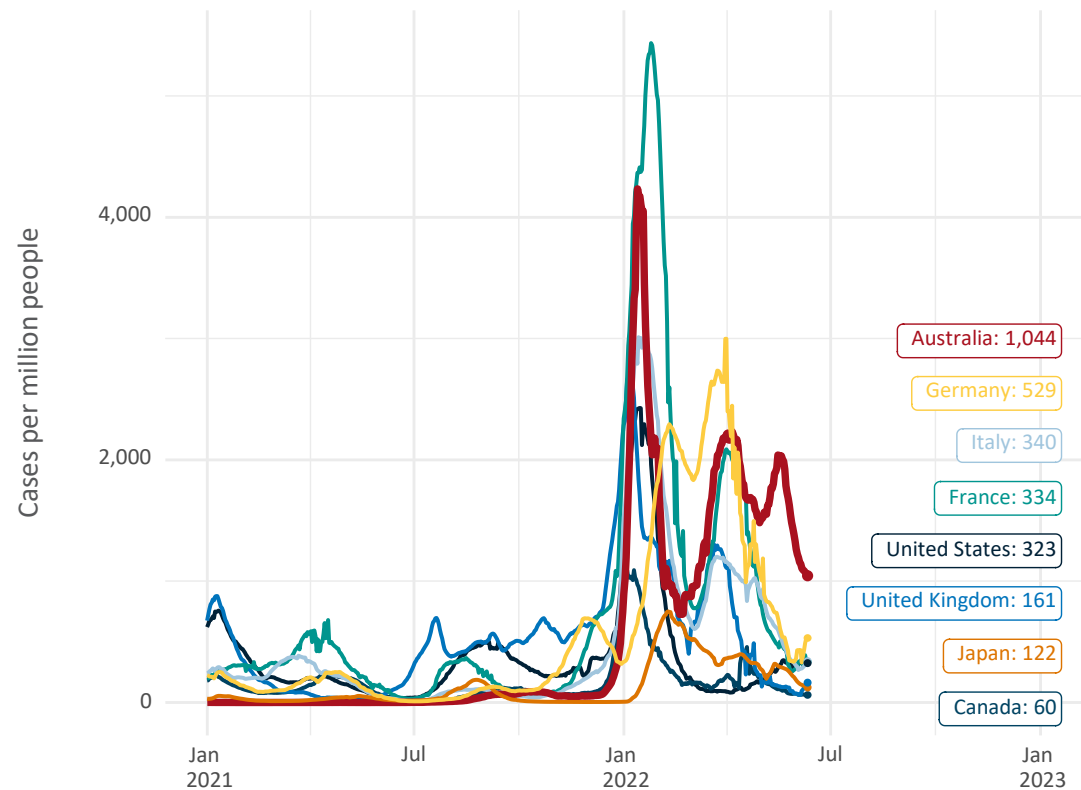
Source: Department of Health (Australia), Our World in Data (international)

Latest data: 12 June

# International data – COVID-19

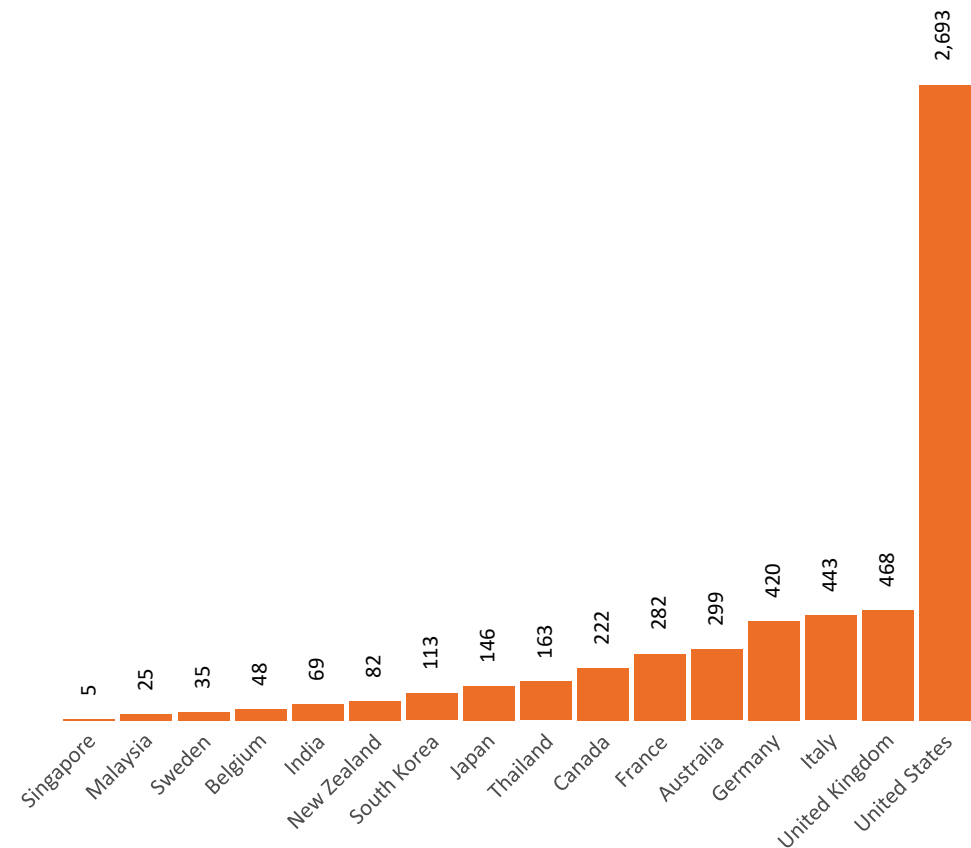
Data as at:  
12 June 2022  
Updated weekly

New daily cases per million since 2021, Australia and G7 countries  
Smoothed - 7 day average



Source: OWID  
Data downloaded: 13 Jun 2022 08:51  
Latest data: 11 Jun 2022

COVID-19 deaths in past 7 days - Australia and select countries



Source: OWID  
Data downloaded: 13 Jun 2022 08:53  
Latest data: 11 Jun 2022

# Administration and Utilisation

Doses as at 12 Jun 2022

	Ordered	Available	Administered	Stock on Hand at Sites	Estimated Dose Utilisation %
	Up to 12/06/22	Delivered up to 05/06/22 including redistributions	Up to 12/06/22		(see note)
NSW	6,112,972	6,112,272	5,134,454	366,591	94%
VIC	7,004,754	7,001,854	6,119,092	244,970	97%
QLD	4,847,302	4,805,642	3,857,369	467,858	90%
WA	2,680,998	2,677,858	2,524,789	85,468	Fully utilised
SA	2,151,920	2,122,520	1,836,663	101,770	97%
TAS	656,390	656,390	626,804	1,726	Fully utilised
NT	423,744	413,156	346,498	29,936	94%
ACT	651,486	651,486	801,287	8,151	Fully utilised
Jurisdiction delivered total	24,529,566	24,441,178	21,246,956	1,306,469	97%
Commonwealth Vaccination Providers	1,432,434	1,427,088	1,309,044	7,599	Fully utilised
Commonwealth Primary Care & Other	58,129,984	57,573,844	37,151,387	14,709,186	75%
Total	84,091,984	83,442,110	59,707,387	16,023,254	82%

## About this data

- Ordered – Total doses delivered or in transit to sites. Based on logistics provider data. This figure includes doses allocated for administration in the coming week.
- Available – total doses that could have been administered to date, less doses re-distributed from States & Territories to Primary Care or Commonwealth Vaccination Providers (i.e., does not include those deliveries recently received, and intended for use in the coming week).
- Administered – Doses administered as at 12 Jun 2022.
- Stock on Hand at Sites – Available doses minus Administered doses and a small % wastage.
- The dose utilisation is calculated based on the total doses administered and a small % wastage in line with international standards in relation to total available doses.
- For Commonwealth Vaccination Providers, the doses available for administration is for the full period (up to 12 Jun 2022).
- Commonwealth Vaccination Providers utilisation is not provided as the in-reach rollout is demand-based.