



**Australian Government**  
**Operation COVID Shield**

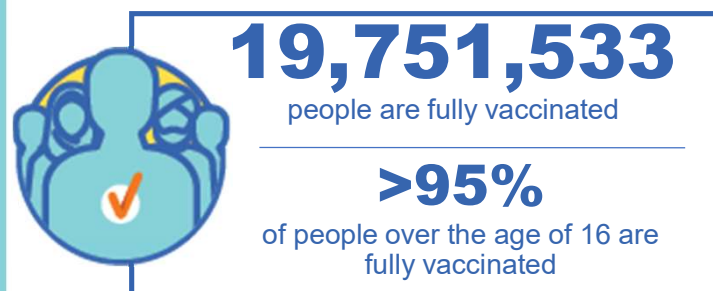
**Australia's COVID-19  
Vaccine Roadmap**

# **COVID-19 Vaccine Rollout**

**13 June 2022**

Data as at:  
12 Jun 2022

## Total vaccine doses



**59,707,387** total vaccine doses administered nationally as at 12 June

**+6,211** recorded in the last 24 hours



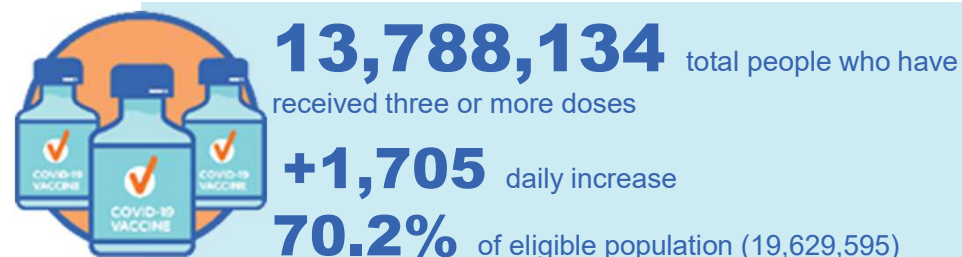
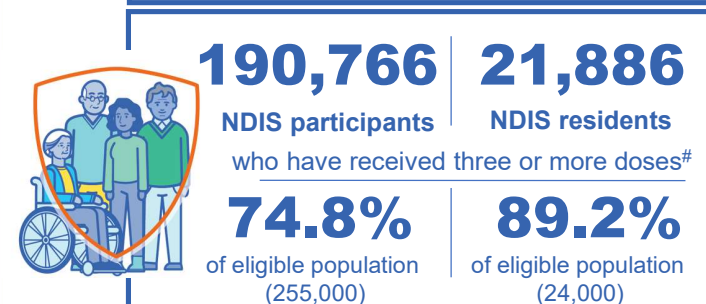
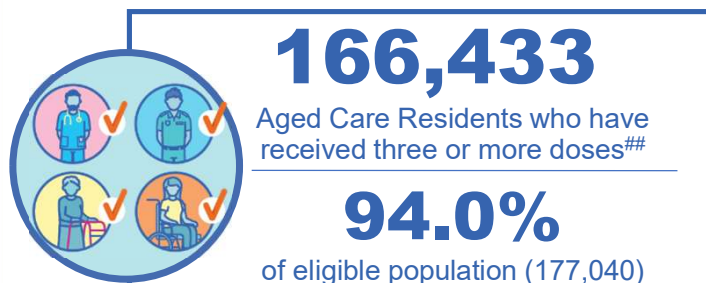
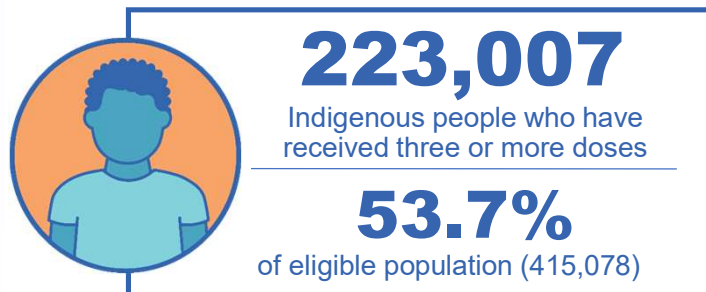
\*Administration state breakdown indicates state in which a vaccine was administered

\*\*Overall dose count includes instances of more than three doses per person in a small number of cases.

Source: Australian Immunisation Register

Data as at:  
12 Jun 2022

## Booster Vaccinations



	Number of People	Daily Increase	% of Eligible
NSW	4,211,456	618	67.7%
VIC	3,683,355	406	72.5%
QLD	2,389,998	323	63.3%
WA	1,695,889	133	83.1%
SA	984,699	208	73.7%
TAS	315,521	36	72.7%
ACT	272,870	26	78.7%
NT	130,997	<10	77.9%

**119,478** doses administered to persons  
residing in other territories or with  
missing residential information

\*People may belong to multiple groups and could be represented in the above breakdowns multiple times.  
# NDIS participants data as at 09 June 2022. ## Aged Care Residents data as at 10 June 2022.

Source: Australian Immunisation Register

## Winter / Fourth Doses

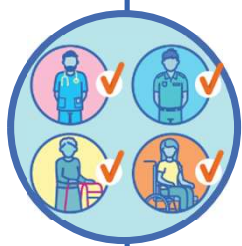
Data as at:  
12 Jun 2022

Australia's COVID-19  
Vaccine Roadmap



**1,914,364** total people (16+) who have received four or more doses

**+3,260** daily increase



**1,698,977**

People aged 65+ who have  
received four or more doses

**52.5%**

of eligible population (3,238,516)

	Number of People 16+	Daily Increase
ACT	38,672	51
NSW	619,504	906
NT	8,412	<10
QLD	362,602	896
SA	154,490	247
TAS	53,404	131
VIC	481,442	549
WA	186,541	462

**9,297** doses administered to persons  
residing in other territories or with  
missing residential information

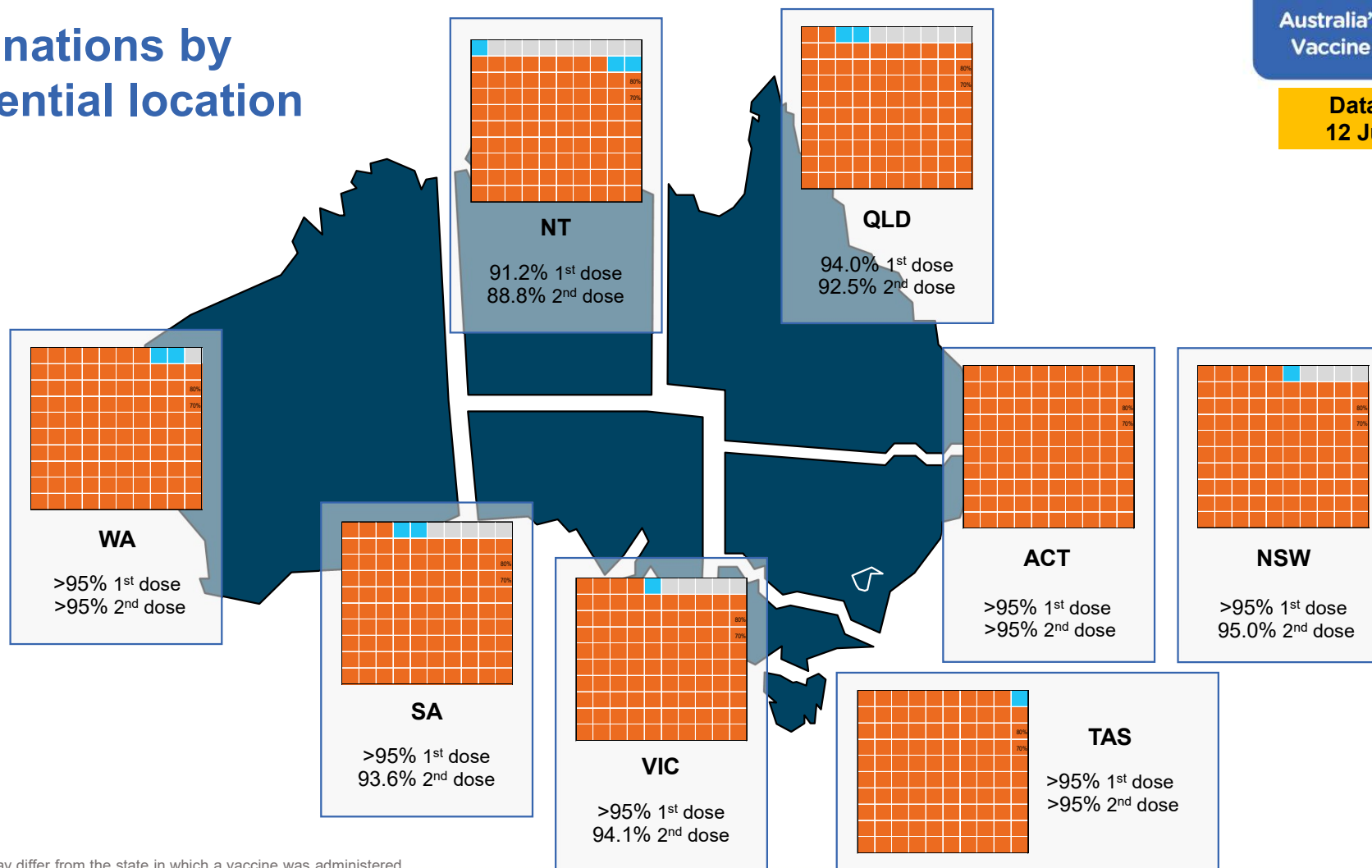
\*People become eligible for a winter booster four months after their third dose.

Source: Australian Immunisation Register

# Vaccinations by residential location

Australia's COVID-19  
Vaccine Roadmap

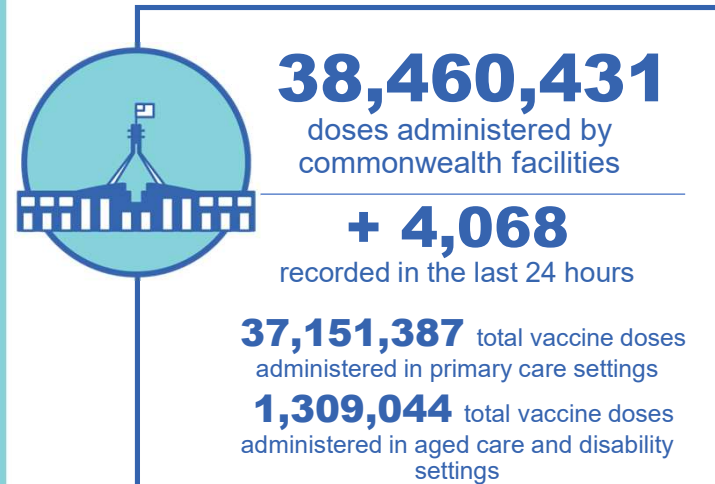
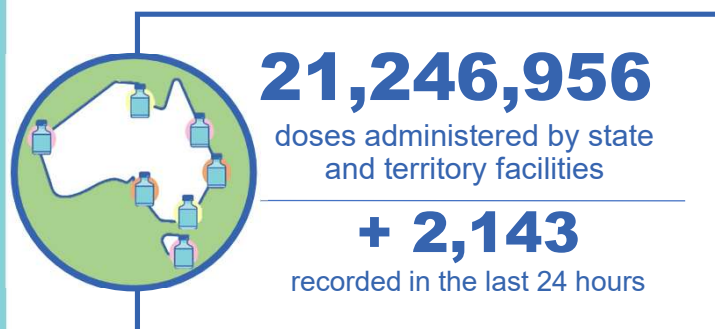
Data as at:  
12 Jun 2022



\*Residential state may differ from the state in which a vaccine was administered

## Commonwealth and Jurisdiction vaccine doses administered

Data as at:  
12 Jun 2022



NSW	Jurisdictions	Commonwealth
Cumulative	5,134,454	13,384,915
Daily increase	1,033	986

VIC	Jurisdictions	Commonwealth
Cumulative	6,119,092	9,555,625
Daily increase	367	857

QLD	Jurisdictions	Commonwealth
Cumulative	3,857,369	7,431,709
Daily increase	59	1,315

WA	Jurisdictions	Commonwealth
Cumulative	2,524,789	4,044,164
Daily increase	162	505

TAS	Jurisdictions	Commonwealth
Cumulative	626,804	725,821
Daily increase	157	41

SA	Jurisdictions	Commonwealth
Cumulative	1,836,663	2,310,427
Daily increase	300	253

ACT	Jurisdictions	Commonwealth
Cumulative	801,287	762,187
Daily increase	56	108

NT	Jurisdictions	Commonwealth
Cumulative	346,498	245,583
Daily increase	<10	<10

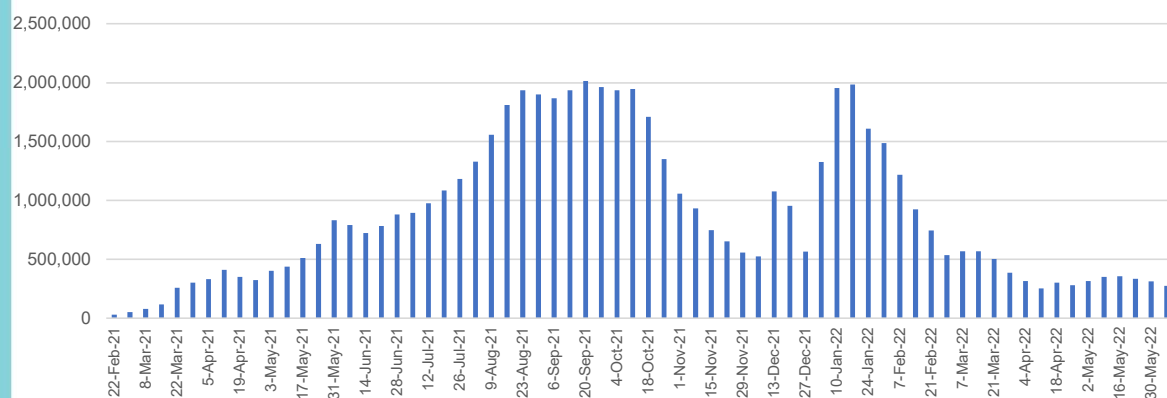
Source: Australian Immunisation Register

# Vaccine milestone charts

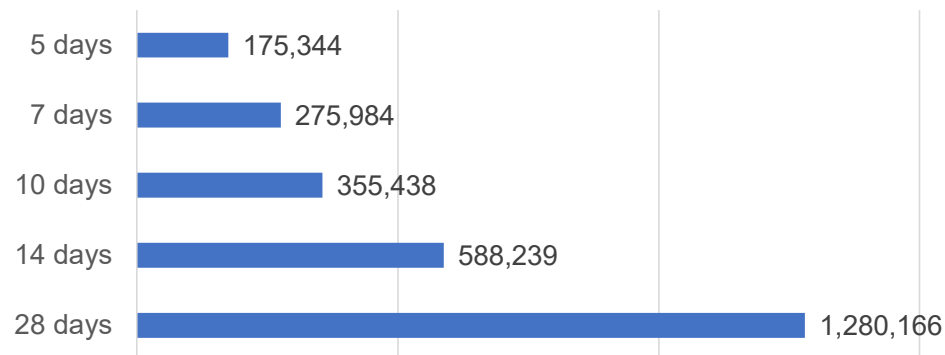
Data as at:  
12 Jun 2022

Australia's COVID-19  
Vaccine Roadmap

Doses Administered by Week

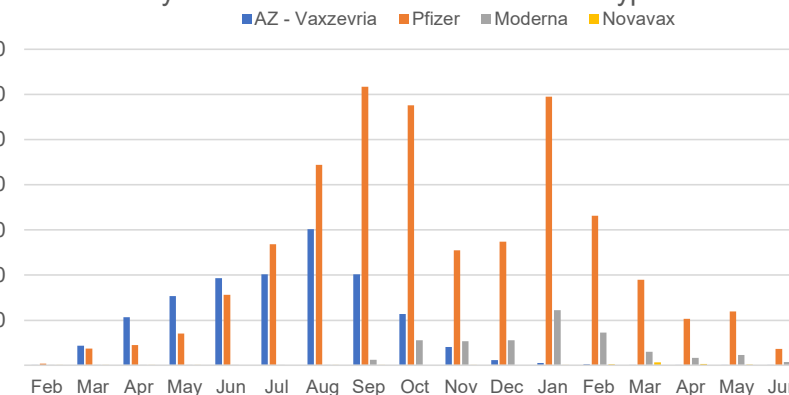


Doses Reported

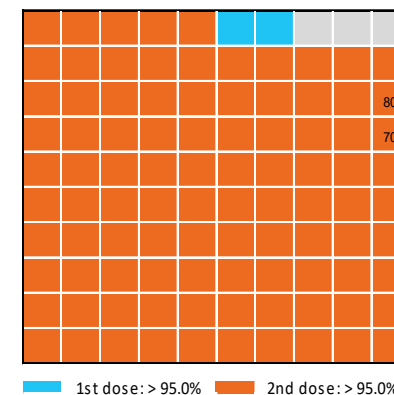


\*Sourced from the Australian Immunisation Register.

Doses by administration month and vaccine type



Eligible population percentage coverage



\*Each square represents 1% of the national population.  
Squares are filled as milestones are achieved.

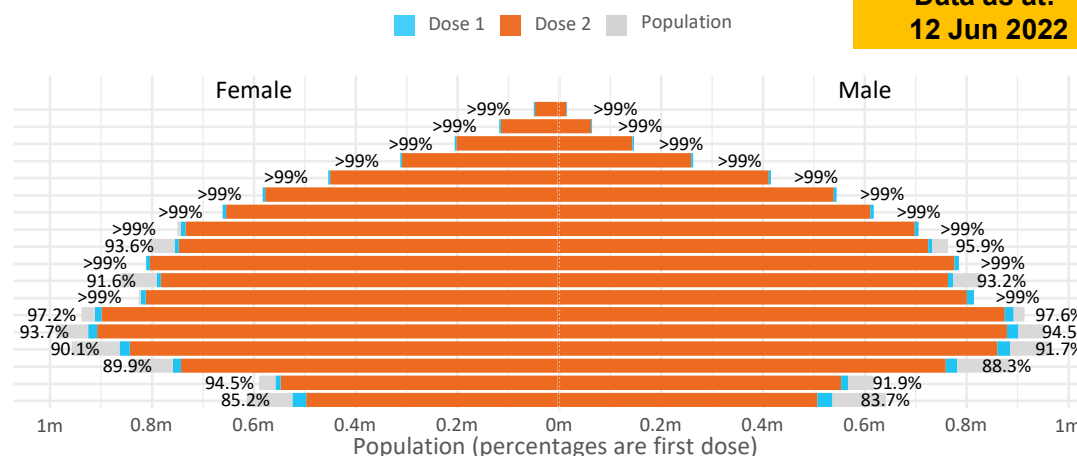
Data as at:  
12 Jun 2022

# Doses by age and sex

First and second doses by age and sex

	16+	50+	12-15	5-11
Dose 1	97.41% (20,086,681 doses / 20,619,959 people)	>99% (8,910,219 doses / 8,749,703 people)	84.49% (1,051,061 doses / 1,243,990 people)	52.51% (1,195,378 doses / 2,276,638 people)
Dose 2	95.79% (19,751,533 doses / 20,619,959 people)	>99% (8,803,027 doses / 8,749,703 people)	80.00% (995,160 doses / 1,243,990 people)	39.16% (891,423 doses / 2,276,638 people)

Age	Dose 1	Dose 2
95+	64,782 (>99%)	61,352 (>99%)
90-94	180,914 (>99%)	175,400 (>99%)
85-89	349,507 (>99%)	342,704 (>99%)
80-84	570,215 (>99%)	563,044 (>99%)
75-79	862,380 (>99%)	853,982 (>99%)
70-74	1,118,092 (>99%)	1,106,816 (>99%)
65-69	1,269,154 (>99%)	1,254,547 (>99%)
60-64	1,436,572 (>99%)	1,420,203 (98.9%)
55-59	1,475,641 (94.9%)	1,458,992 (93.8%)
50-54	1,582,962 (>99%)	1,565,987 (>99%)
45-49	1,551,088 (92.5%)	1,532,687 (91.4%)
40-44	1,623,637 (>99%)	1,599,640 (98.7%)
35-39	1,792,648 (97.7%)	1,760,497 (95.9%)
30-34	1,818,386 (94.5%)	1,776,557 (92.4%)
25-29	1,743,562 (91.5%)	1,695,898 (89.0%)
20-24	1,532,101 (89.5%)	1,492,133 (87.1%)
16-19	1,115,040 (93.2%)	1,091,094 (91.2%)
12-15	1,051,061 (84.5%)	995,160 (80.0%)



	AUS	ACT	NSW	NT	QLD	SA	TAS	VIC	WA
16 and over - dose 1	20,086,681	353,052	6,335,402	173,888	3,867,088	1,377,195	445,575	5,168,642	2,097,922
16 and over - dose 2	19,751,533	347,349	6,237,948	169,220	3,803,363	1,347,973	436,551	5,090,792	2,066,779
16 and over - population	20,619,959*	344,037	6,565,651	190,571	4,112,707	1,440,400	440,172	5,407,574	2,114,978
16 and over % with dose 1	97.41%	>99%	96.49%	91.25%	94.03%	95.61%	>99%	95.58%	>99%
16 and over % with dose 2	95.79%	>99%	95.01%	88.80%	92.48%	93.58%	>99%	94.14%	97.72%
5 to 11 - dose 1	1,195,378	31,850	356,945	13,176	207,059	83,846	28,531	325,396	140,792
5 to 11 - dose 2	891,423	27,169	271,921	8,678	148,584	62,639	22,972	243,713	101,091
5 to 11 - population	2,276,638	39,789	716,460	24,750	478,731	148,816	45,033	578,499	244,154
5 to 11 % with dose 1	52.51%	80.05%	49.82%	53.24%	43.25%	56.34%	63.36%	56.25%	57.67%
5 to 11 % with dose 2	39.16%	68.28%	37.95%	35.06%	31.04%	42.09%	51.01%	42.13%	41.40%
12 to 15 - dose 1	1,051,061	20,117	323,143	10,780	206,024	68,264	22,891	274,694	115,583
12 to 15 - dose 2	995,160	19,585	308,769	9,720	192,573	64,508	21,766	262,886	107,027
12 to 15 - population	1,243,990	19,693	390,330	13,060	270,146	82,747	26,308	308,611	132,869
12 to 15 % with dose 1	84.49%	>99%	82.79%	82.54%	76.26%	82.50%	87.01%	89.01%	86.99%
12 to 15 % with dose 2	80.00%	>99%	79.10%	74.43%	71.28%	77.96%	82.74%	85.18%	80.55%

\*National population will not equal sum of listed jurisdictions due to a small number of people counted in national population residing in some 'other' territories. Sum of state doses will not add to national total as some records are unable to be geocoded to a State or Territory.

Doses sourced from Australian Immunisation Register, population from ABS ERP June 2020

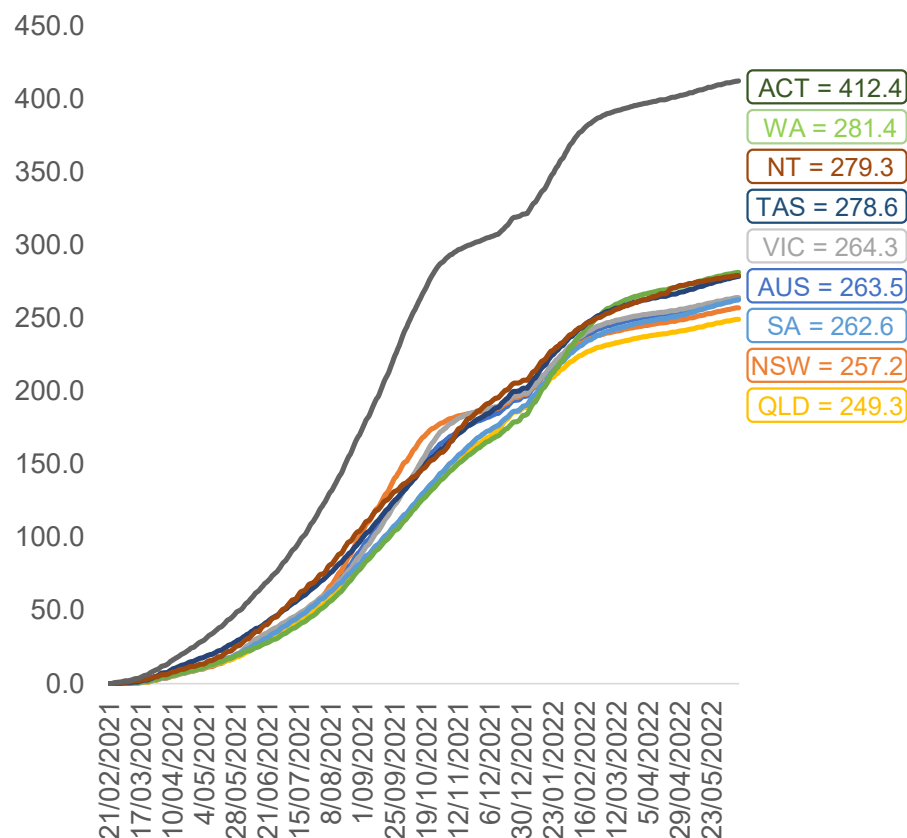


# Vaccinations by location

Data as at:  
12 Jun 2022

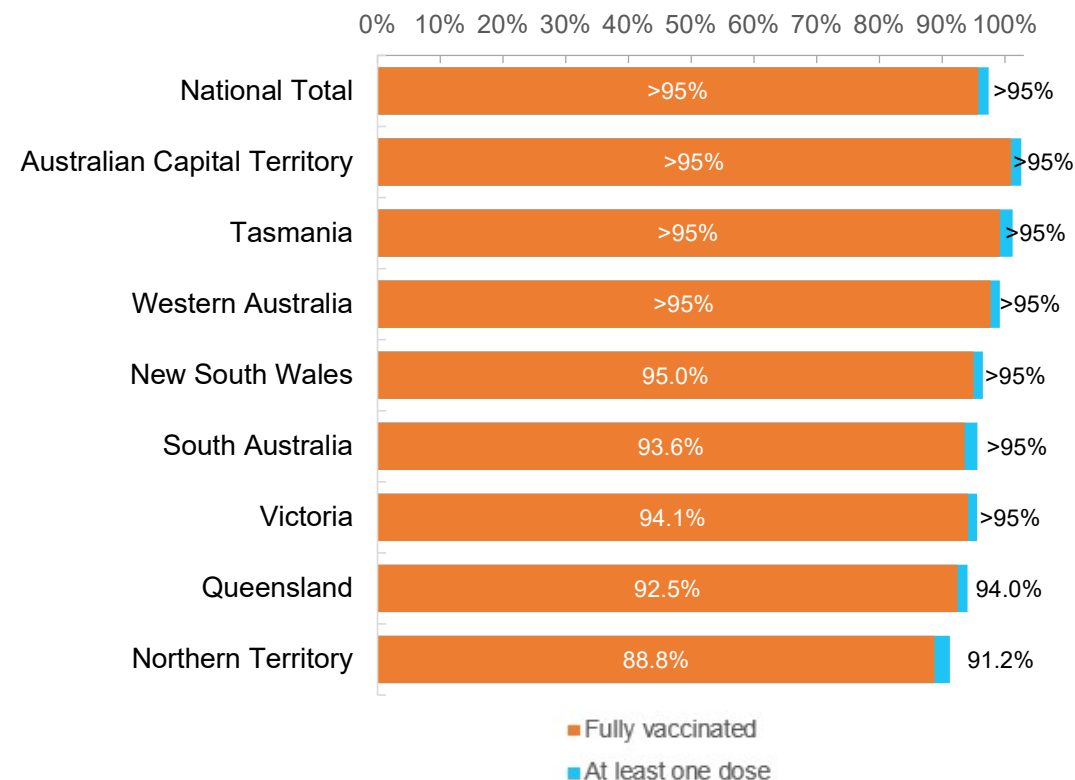
Australia's COVID-19  
Vaccine Roadmap

Cumulative total doses administered vs eligible state populations\*



\*Not an indication of percentage vaccinated, numbers will exceed 100 due to multiple doses required per person of the population.  
All doses are included for those aged 12 and above, and are based on vaccination provider location.

First and Second Doses by residential location

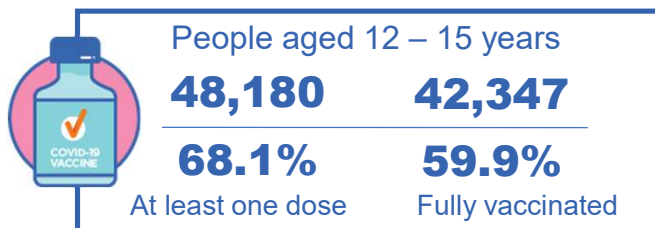
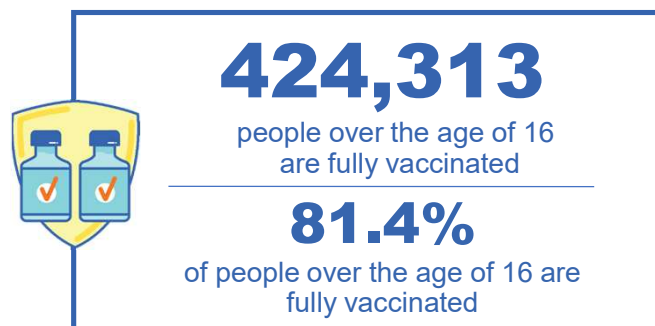


# Aboriginal and Torres Strait Islander peoples

## Number of people vaccinated

Data as at:  
07 Jun 2022  
Updated weekly

Australia's COVID-19  
Vaccine Roadmap



### 178 Aboriginal community controlled health services (ACCHS)

0# 50 27 44 12 3 21 21  
ACT NSW NT QLD SA TAS VIC WA

Medicare Address State <sup>##</sup>	Individuals Dose 1	Individuals Dose 1 %	Individuals Dose 2	Individuals Dose 2 %
Australian Capital Territory	4,796	91.7%	4,675	89.4%
New South Wales	136,052	87.3%	132,990	85.4%
Northern Territory	41,483	89.7%	39,499	85.4%
Queensland	116,374	81.8%	110,974	78.0%
South Australia	20,068	80.5%	18,671	74.9%
Tasmania	13,947	88.8%	13,538	86.2%
Victoria	35,648	90.4%	34,880	88.5%
Western Australia	53,657	86.7%	49,896	80.6%
Unknown/Other Territories	20,849	70.0%	19,190	64.4%
<b>Totals</b>	<b>442,874</b>	<b>85.0%</b>	<b>424,313</b>	<b>81.4%</b>

Source: Australian Immunisation Register

\*Identifying as Aboriginal and Torres Strait Islander is optional and the estimated population may be under reported.

\*\*Includes all Aboriginal and Torres Strait Islander peoples who have received a vaccination, not limited to those administered in an ACCHS setting

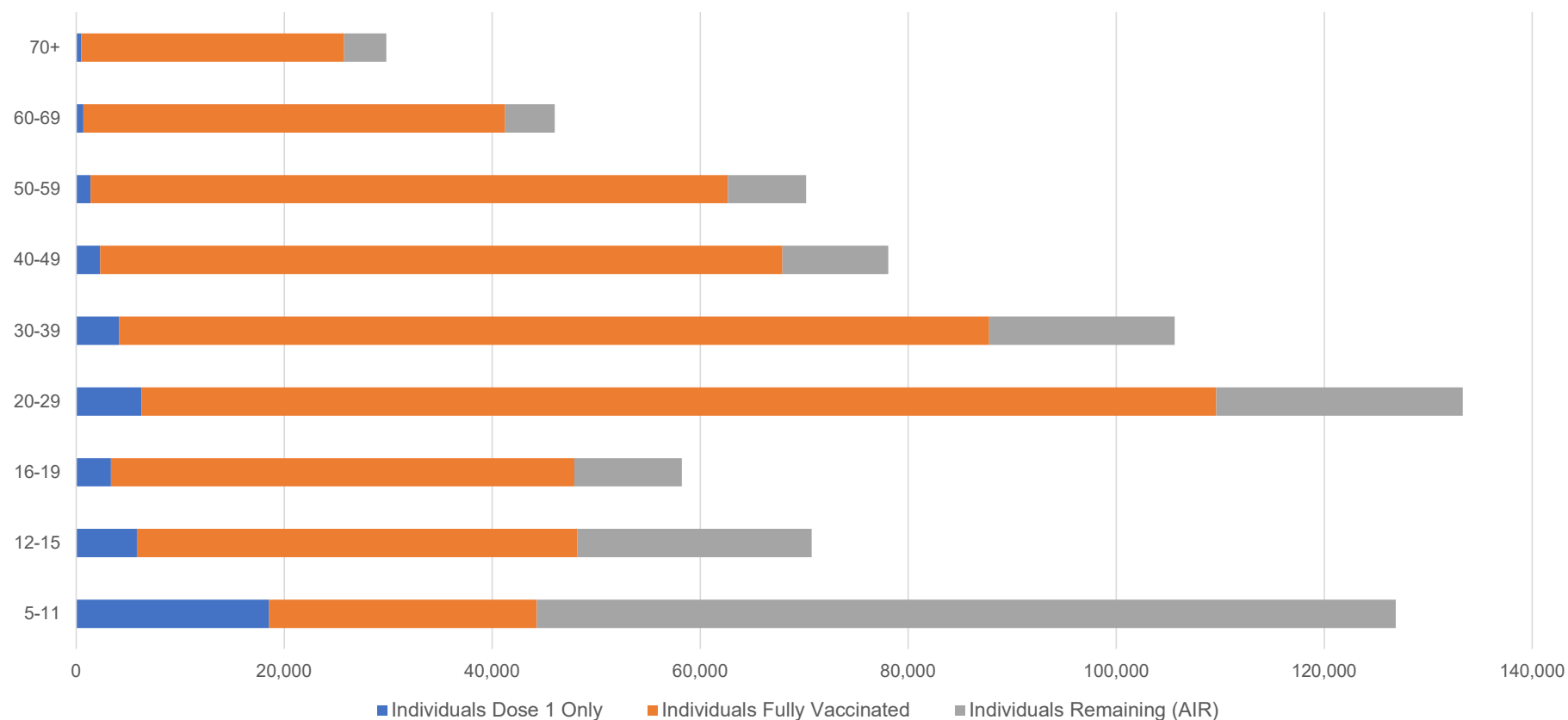
<sup>#</sup>ACCHS in the ACT are currently operating as a Commonwealth Vaccine Clinics so not included to avoid double counting

<sup>##</sup>The above table includes all identified Aboriginal and Torres Strait Islander people who are aged 16 and above by their state of residence.

## Aboriginal and Torres Strait Islander peoples Number of people vaccinated by age

Data as at:  
07 Jun 2022  
Updated weekly

Australia's COVID-19  
Vaccine Roadmap



Source: Australian Immunisation Register

## Commonwealth primary care

Data as at:  
12 Jun 2022

Australia's COVID-19  
Vaccine Roadmap



### Primary care vaccine administration sites

<b>5,707</b>	<b>128</b>	<b>178</b>	<b>3,607</b>
GPs	CVCs	ACCHS	Pharmacies



**37,151,387** total vaccine doses administered  
primary care settings as at 12 June  
**+ 4,065** recorded in the last 24 hours

### Primary care vaccinations by provider type

	Doses administered	Daily increase	7 day increase
General Practice* includes other Commonwealth	29,738,773	2,671	172,803
Pharmacy	7,412,614	1,394	70,946

**NSW**  
**12,815,172**  
(+1,005 daily increase)

**VIC**  
**9,225,121**  
(+901 daily increase)

**QLD**  
**7,146,654**  
(+1,396 daily increase)

**WA**  
**3,904,870**  
(+548 daily increase)

**TAS**  
**704,728**  
(+43 daily increase)

**SA**  
**2,228,727**  
(+278 daily increase)

**ACT**  
**587,103**  
(+107 daily increase)

**NT**  
**220,177**  
(+10 daily increase)

**318,835**

doses administered to persons  
residing in other territories or with  
missing residential information

\*General practice includes Commonwealth Vaccination Clinics, Aboriginal Community Health Centres, Royal Flying Doctor Service and other Commonwealth vaccination facilities

Source: Australian Immunisation Register

Data as at:  
12 Jun 2022

# Commonwealth aged care and disability doses administered



**1,309,044** (<10 last 24 hours)

Total vaccine doses administered in aged care and disability facilities as at 12 June

Number of doses administered as part of the Commonwealth aged and disability care rollout

**NSW**  
**569,978**  
(<10 daily increase)

**VIC**  
**246,182**  
(<10 daily increase)

**QLD**  
**208,231**  
(+11 daily increase)

**WA**  
**110,824**  
(<10 daily increase)

**TAS**  
**23,592**  
(<10 daily increase)

**SA**  
**85,908**  
(<10 daily increase)

**ACT**  
**17,809**  
(<10 daily increase)

**NT**  
**7,685**  
(<10 daily increase)

**38,835**

doses administered to persons  
residing in other territories or with  
missing residential information

\*Sourced from the Australian Immunisation Register. Includes all persons vaccinated at participating residential aged care, disability and related industry settings.

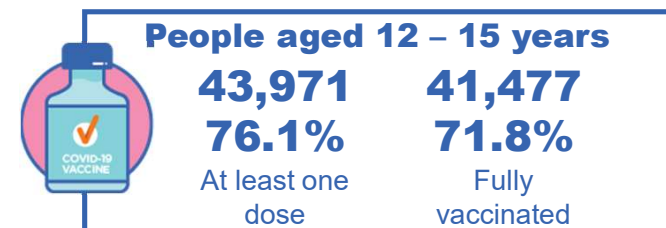
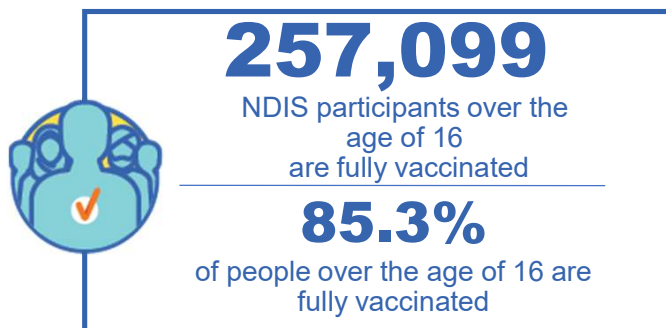
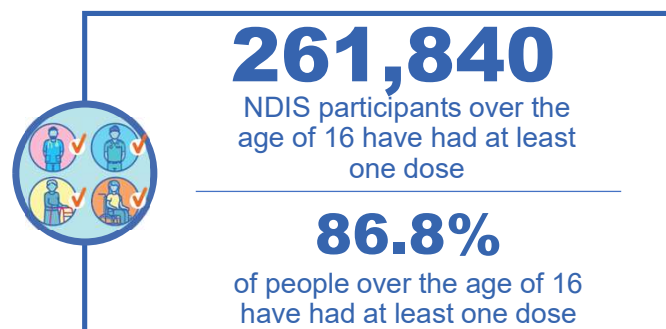
\*\*State level breakdown indicates the residential location and may not align to the state in which the vaccination occurred.

Source: Australian Immunisation Register

# National Disability Insurance Scheme (NDIS) reported vaccinations

Data as at:  
09 June 2022  
Updated weekly

Australia's COVID-19  
Vaccine Roadmap



## NDIS participant vaccinations

	People aged 16+ with at least one dose	People aged 16+ fully vaccinated	% People aged 16+ with at least one dose	% People aged 16+ fully vaccinated
ACT	4,931	4,865	88.9%	87.7%
NSW	80,199	78,915	87.3%	85.9%
NT	2,271	2,202	77.8%	75.4%
QLD	51,866	50,885	85.1%	83.5%
SA	21,433	20,931	84.6%	82.6%
TAS	6,549	6,397	87.1%	85.1%
VIC	69,568	68,397	88.0%	86.5%
WA	25,023	24,507	88.1%	86.3%
National	261,840	257,099	86.8%	85.3%

Source: Linkage between National Disability Insurance Agency data and the Australian Immunisation Register. Total NDIS participant numbers as at 30 May. Australian Immunisation Register data as at 08 June. Includes all participants regardless of residence type.

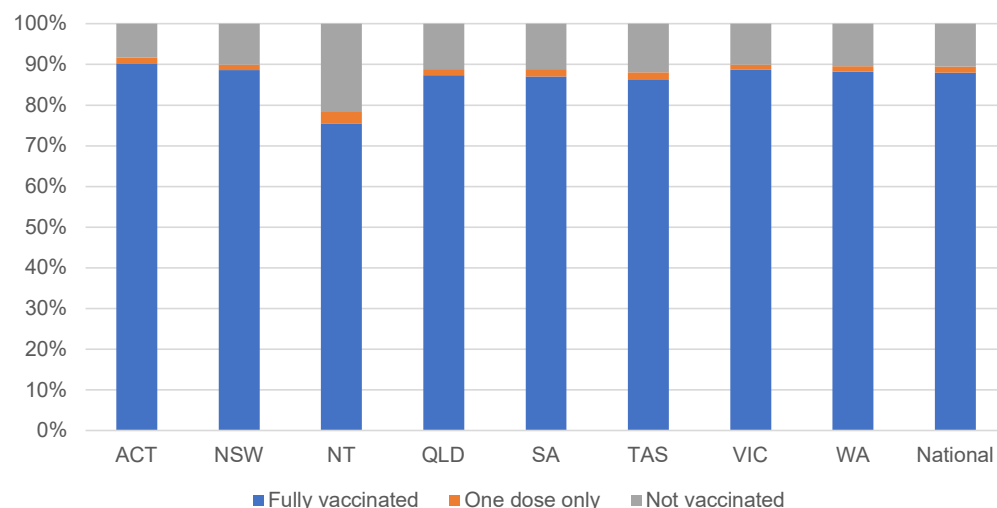
# National Disability Insurance Scheme (NDIS) reported vaccinations

Data as at:  
09 June 2022  
Updated weekly

Australia's COVID-19  
Vaccine Roadmap

NATIONAL	Total people with at least one dose	People fully vaccinated	Total number of individuals in cohort	% People with at least one dose	% People fully vaccinated
NDIS participants living in disability accommodation	21,004	20,669	23,469	89.5%	88.1%

## NDIS participants in disability and aged care accommodation



Source: Linkage between National Disability Insurance Agency data and the Australian Immunisation Register. Includes participants residing in disability accommodation only.

Source: Total NDIS participant numbers as at 30 May. Participant data as at 08 June. Australian Immunisation Register data as at 08 June. Worker data as at 08 June.

## NDIS workforce vaccinations

	NDIS workers with at least one dose	NDIS workers fully vaccinated	% NDIS workers with at least one dose	% NDIS workers fully vaccinated
NSW	127,085	121,461	98.3%	93.9%
VIC	117,822	114,648	98.3%	95.6%
QLD	71,448	70,571	97.8%	96.6%
WA	34,510	33,162	99.0%	95.1%
SA	35,901	33,883	98.6%	93.1%
TAS	10,808	10,577	99.5%	97.3%
ACT	12,334	12,307	99.8%	99.6%
NT	3,949	3,787	99.6%	95.6%
<b>TOTAL</b>	<b>413,857</b>	<b>400,396</b>	<b>98.4%</b>	<b>95.2%</b>

Source: the NDIS Commission has established a requirement for registered NDIS providers who provide intensive disability support services to report on the vaccination status of workers they employ, or otherwise engage, to deliver NDIS-funded supports and services, and who are required to be vaccinated in accordance with in-force state and territory public health orders. The statistics reflect data reported to the NDIS Commission by registered NDIS providers and should be considered indicative and subject to change.

Note: Some registered NDIS providers are yet to report on the vaccination status of their workforce. The NDIS Commission is working with those providers around reporting requirements.

Remaining workers not included include those exempt from vaccination requirements, workers whose vaccination status is not yet verified by the provider (such as workers on leave) and provider reporting anomalies.

## Residential aged care vaccination rollout

Residential aged care facilities status

**177,040**

People fully vaccinated

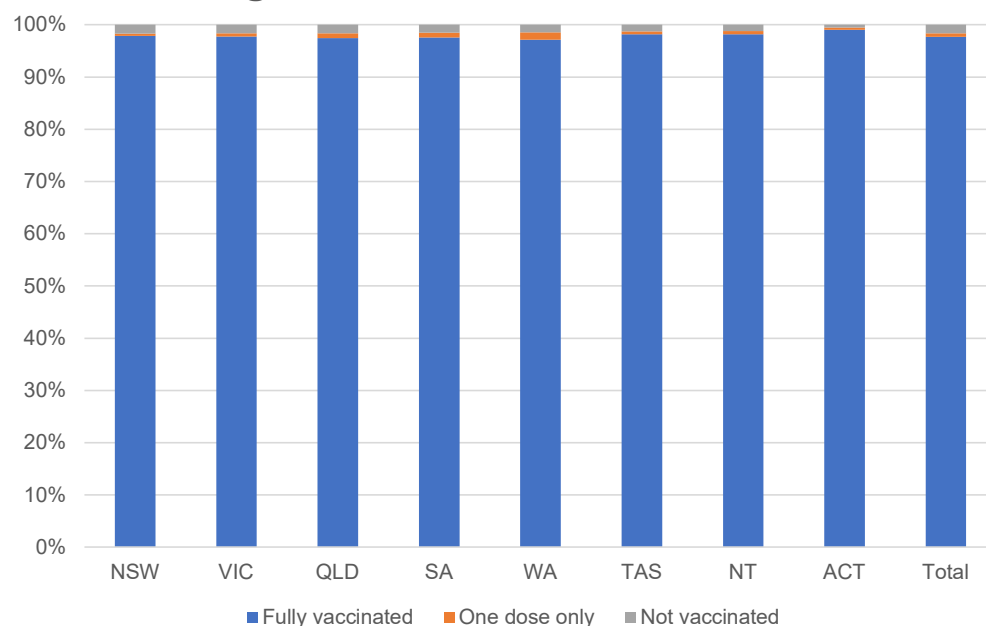
**178,323**

People with at least one dose

Australia's COVID-19 Vaccine Roadmap

Data as at:  
09 June 2022  
Updated weekly

### Aged care resident vaccinations



### Aged care worker vaccinations

Jurisdictions	Total workers with at least one dose	Workers fully vaccinated	% Workers with at least one dose	% Workers fully vaccinated
NSW	77,506	77,493	99.9%	99.8%
VIC	70,702	70,700	99.5%	99.5%
QLD	48,493	48,488	99.6%	99.6%
SA	27,327	27,316	100.0%	100.0%
WA	24,484	24,480	100.0%	100.0%
TAS	7,639	7,638	100.0%	100.0%
NT	933	933	100.0%	100.0%
ACT	2,907	2,907	100.0%	100.0%
Total	259,991	259,955	99.8%	99.7%

Source: My Aged Care Portal vaccination progress

\*Status updates are provided by facilities at least once per week. Reporting is updated Monday to Friday to encompass different facility updates being made on different days.

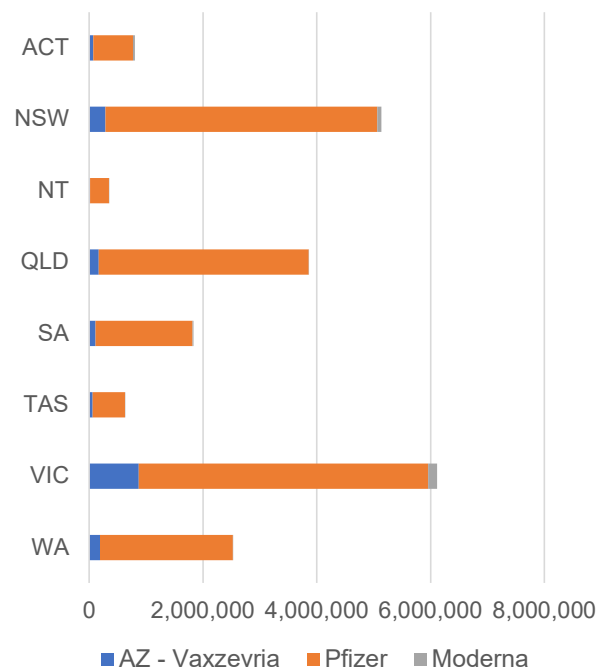
Data is sourced directly from Aged Care Service Providers and is not drawn or closely aligned with data from AIR due to inconsistencies and potential lags in uploading of records.



Data as at:  
12 Jun 2022

## Jurisdiction administered

Total vaccine doses administered in State and Territory clinics as at 12 June



**21,246,956** total vaccine doses administered  
in State and Territory clinics as at 12 June  
+ **2,143** recorded in the last 24 hours  
+ **26,879** recorded in the last 7 days

**NSW**  
**5,134,454**  
(+1,033 daily increase)

**VIC**  
**6,119,092**  
(+367 daily increase)

**QLD**  
**3,857,369**  
(+59 daily increase)

**WA**  
**2,524,789**  
(+162 daily increase)

**TAS**  
**626,804**  
(+157 daily increase)

**SA**  
**1,836,663**  
(+300 daily increase)

**ACT**  
**801,287**  
(+56 daily increase)

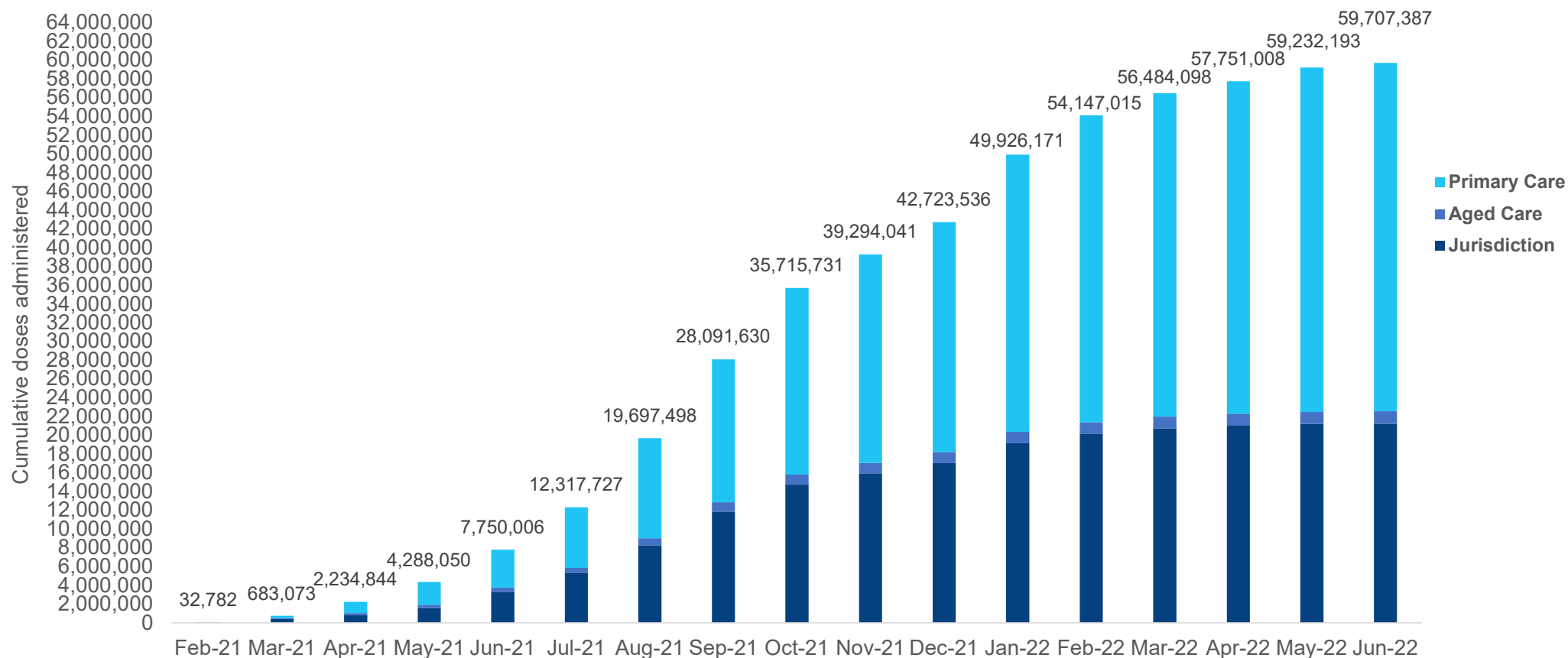
**NT**  
**346,498**  
(**<10** daily increase)

\*Sourced from the Australian Immunisation Register. Numbers are calculated as difference in daily cumulative reported numbers to allow for historical corrections.

# Cumulative doses administered by channel

Data as at:  
12 Jun 2022

Australia's COVID-19  
Vaccine Roadmap

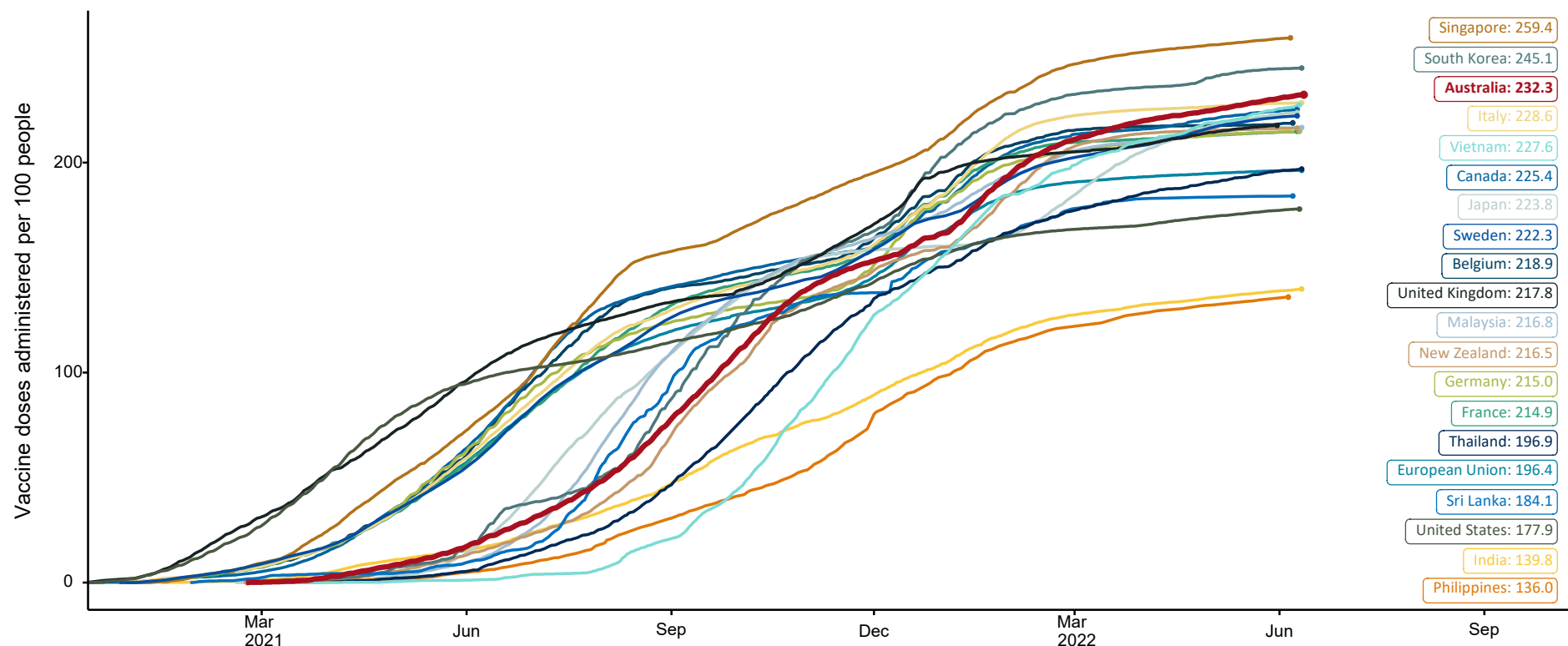


Source: Australian Immunisation Register

# COVID-19 vaccine doses per 100, Australia and select countries

Data as at:  
12 June 2022  
Updated weekly

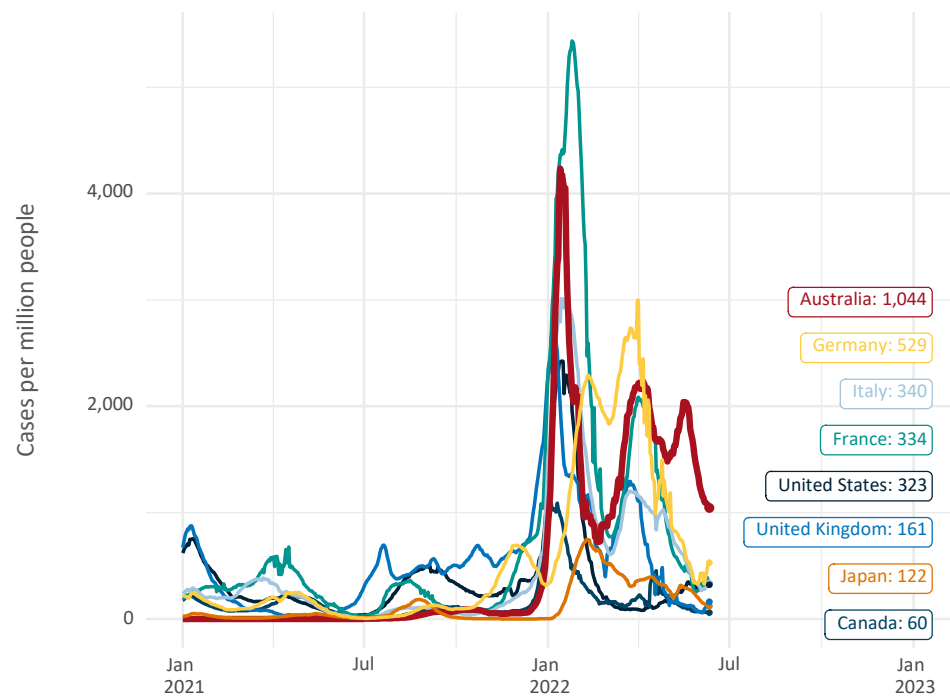
Australia's COVID-19  
Vaccine Roadmap



Note: From 11 January 2022, data for Australia includes all doses administered to people 5 and over. Prior to 11 January, data was for 12 and over.  
Source: Department of Health (Australia), Our World in Data (international)  
Latest data: 12 June

## International data – COVID-19

New daily cases per million since 2021, Australia and G7 countries  
Smoothed - 7 day average

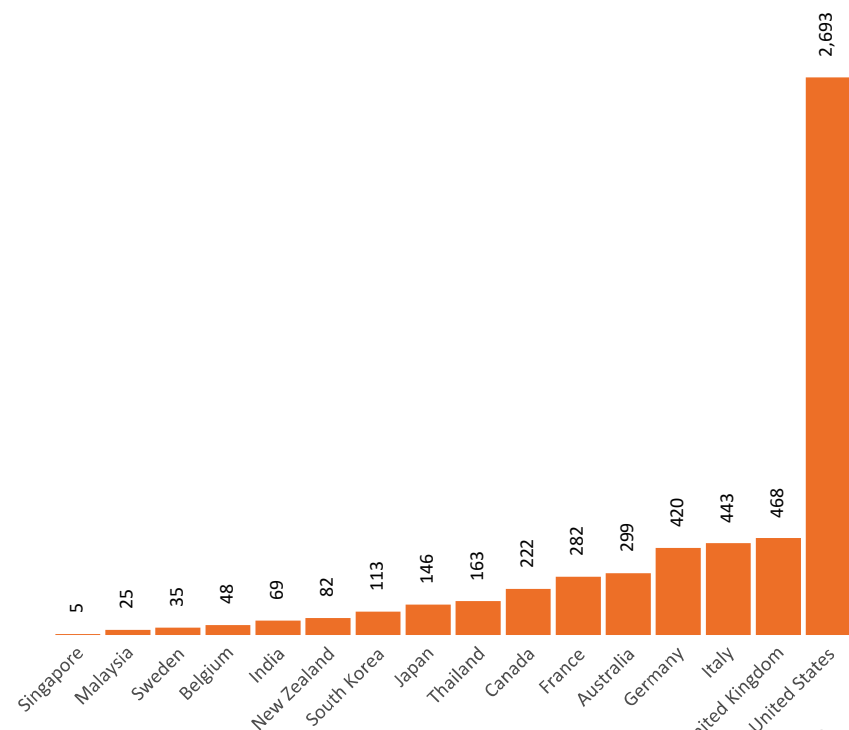


Source: OWID  
Data downloaded: 13 Jun 2022 08:51  
Latest data: 11 Jun 2022

Data as at:  
12 June 2022  
Updated weekly

Australia's COVID-19  
Vaccine Roadmap

COVID-19 deaths in past 7 days - Australia and select countries



Source: OWID  
Data downloaded: 13 Jun 2022 08:53  
Latest data: 11 Jun 2022