



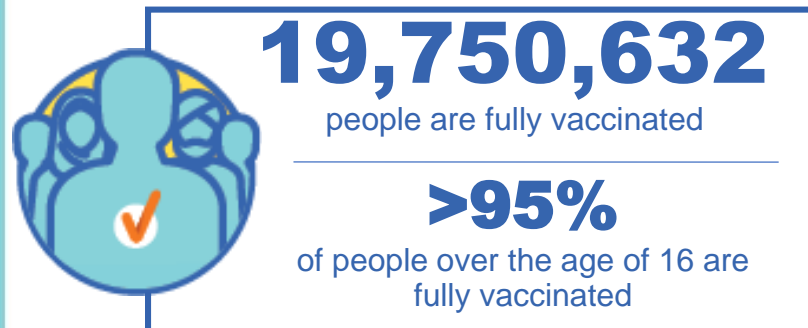
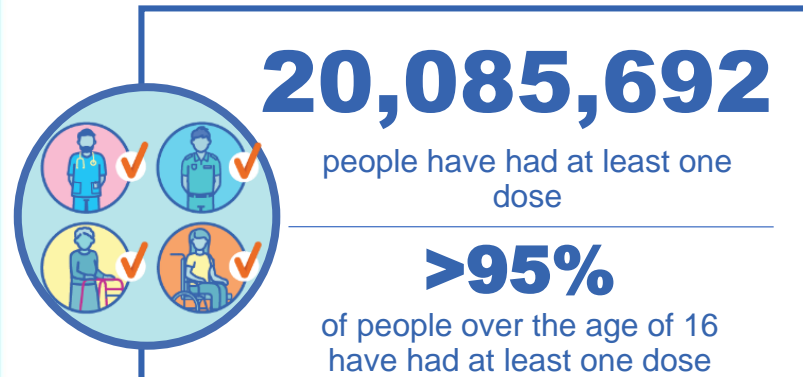
Australian Government
Operation COVID Shield

COVID-19 Vaccine Roll-out

12 June 2022

Data as at:
11 Jun 2022

Total vaccine doses



59,701,176 total vaccine doses administered nationally as at 11 June

+14,697 recorded in the last 24 hours

NSW
18,517,350
(+4,660 daily increase)

VIC
15,673,493
(+3,714 daily increase)

QLD
11,287,704
(+2,217 daily increase)

WA
6,568,286
(+1,927 daily increase)

TAS
1,352,427
(+361 daily increase)

SA
4,146,537
(+1,256 daily increase)

ACT
1,563,310
(+392 daily increase)

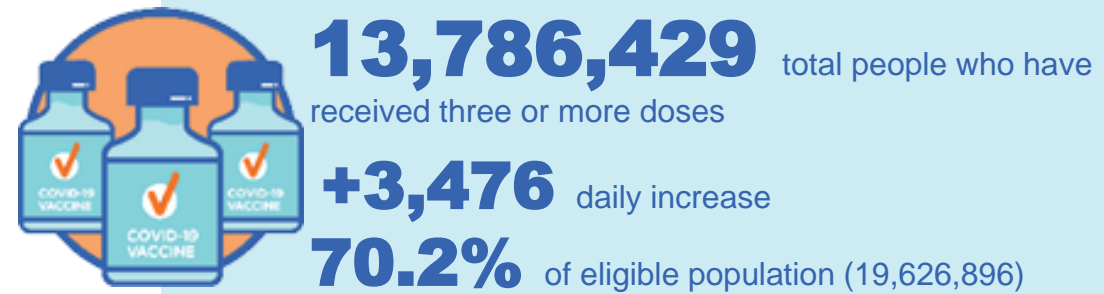
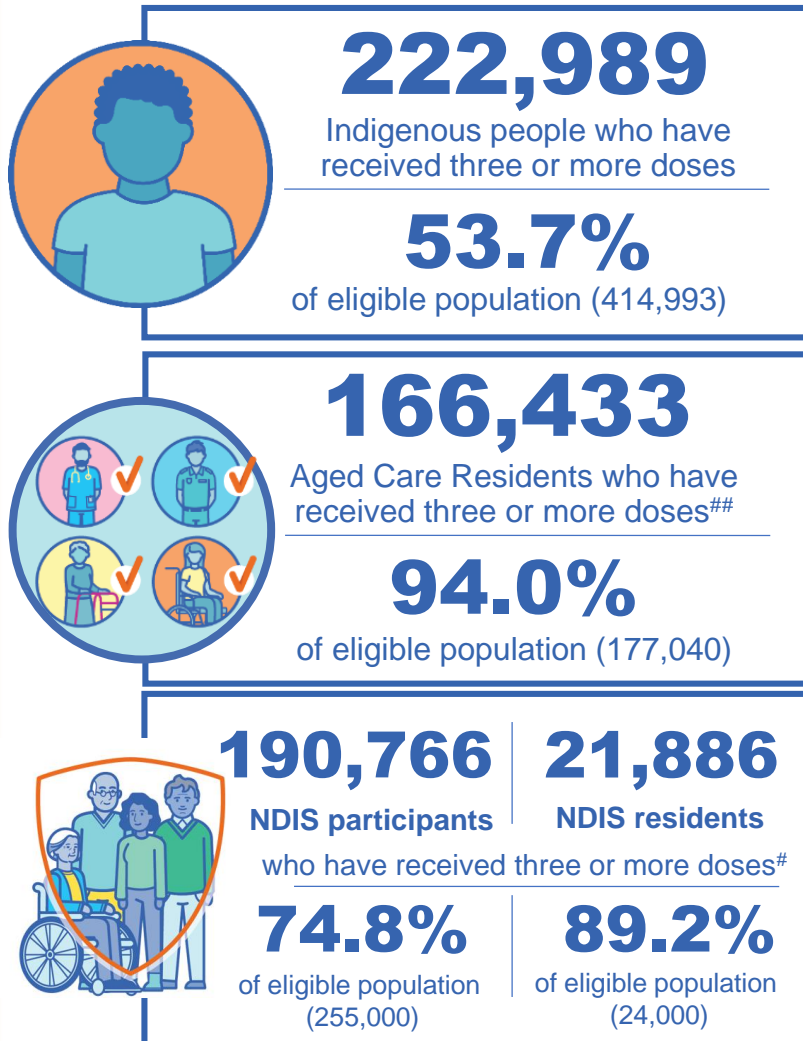
NT
592,069
(+170 daily increase)

*Administration state breakdown indicates state in which a vaccine was administered

**Overall dose count includes instances of more than three doses per person in a small number of cases.

Source: Australian Immunisation Register

Booster Vaccinations



Data as at:
11 Jun 2022

	Number of People	Daily Increase	% of Eligible
NSW	4,210,838	1,103	67.7%
VIC	3,682,949	957	72.5%
QLD	2,389,675	492	63.3%
WA	1,695,756	314	83.1%
SA	984,491	420	73.7%
TAS	315,485	98	72.7%
ACT	272,844	64	78.7%
NT	130,988	64	77.9%

*People may belong to multiple groups and could be represented in the above breakdowns multiple times.
NDIS participants data as at 09 June 2022. ## Aged Care Residents data as at 10 June 2022.

Source: Australian Immunisation Register

119,531 doses administered to persons residing in other territories or with missing residential information

Winter / Fourth Doses

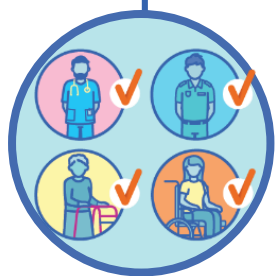
Data as at:
11 Jun 2022

Australia's COVID-19
Vaccine Roadmap



1,911,104 total people (16+) who have received four or more doses

+8,760 daily increase



1,696,338

People aged 65+ who have
received four or more doses

52.6%

of eligible population (3,225,420)

	Number of People 16+	Daily Increase
ACT	38,621	149
NSW	618,598	2,770
NT	8,409	47
QLD	361,706	1,482
SA	154,243	644
TAS	53,273	220
VIC	480,893	2,068
WA	186,079	1,349

9,282 doses administered to persons
residing in other territories or with
missing residential information

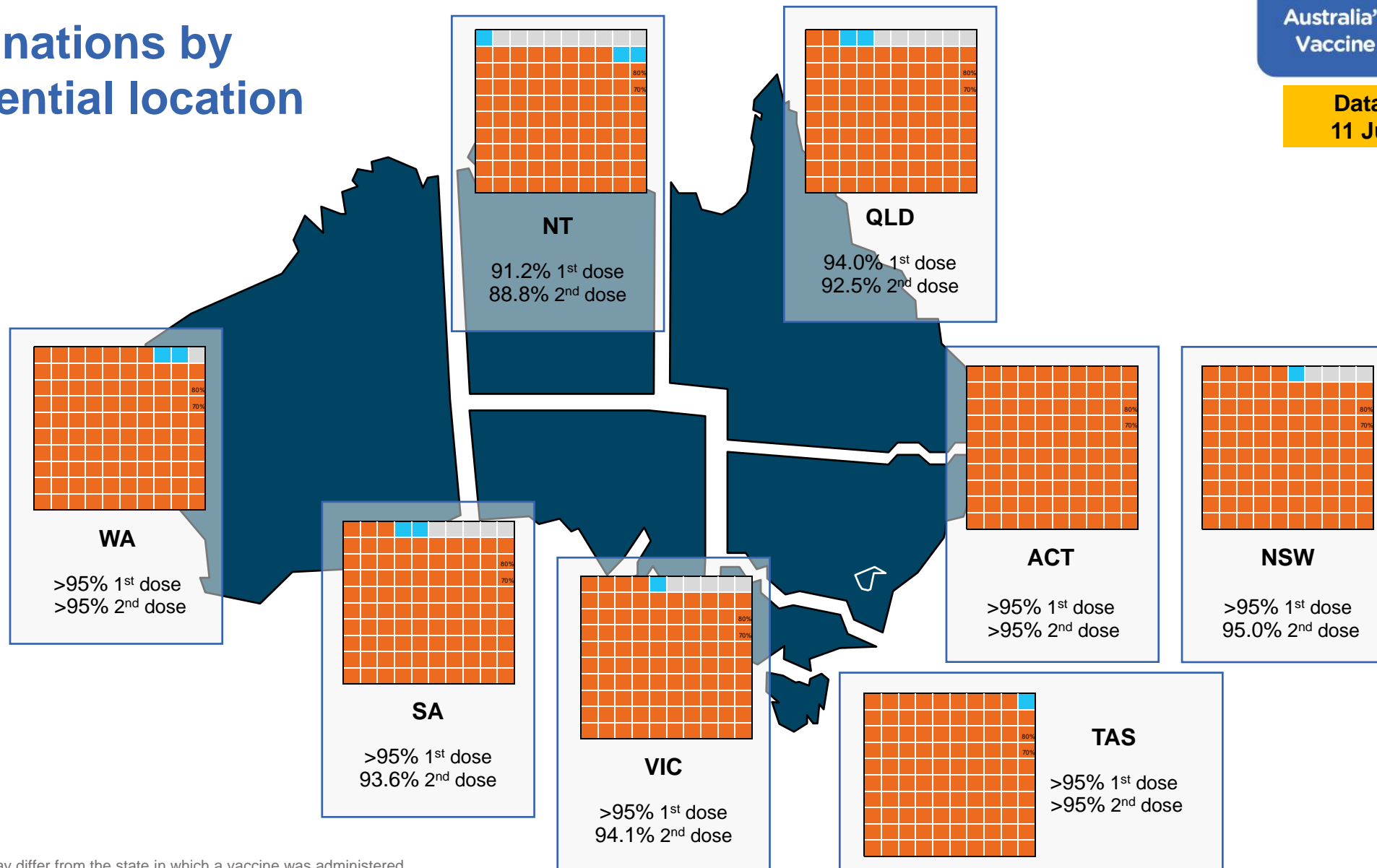
*People become eligible for a winter booster four months after their third dose.

Source: Australian Immunisation Register

Vaccinations by residential location

Australia's COVID-19
Vaccine Roadmap

Data as at:
11 Jun 2022



*Residential state may differ from the state in which a vaccine was administered

Commonwealth and Jurisdiction vaccine doses administered

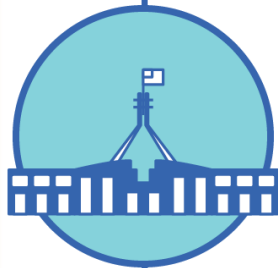
Data as at:
11 Jun 2022



59,701,176 total vaccine
doses administered nationally as at 11 June
+ 14,697 recorded in the last 24 hours



21,244,813
doses administered by state
and territory facilities
+ 3,360
recorded in the last 24 hours



38,456,363
doses administered by
commonwealth facilities
+ 11,337
recorded in the last 24 hours
37,147,322 total vaccine doses
administered in primary care settings
1,309,041 total vaccine doses
administered in aged care and disability
settings

NSW	Jurisdictions	Commonwealth
Cumulative	5,133,421	13,383,929
Daily increase	941	3,719

VIC	Jurisdictions	Commonwealth
Cumulative	6,118,725	9,554,768
Daily increase	894	2,820

QLD	Jurisdictions	Commonwealth
Cumulative	3,857,310	7,430,394
Daily increase	277	1,940

WA	Jurisdictions	Commonwealth
Cumulative	2,524,627	4,043,659
Daily increase	355	1,572

TAS	Jurisdictions	Commonwealth
Cumulative	626,647	725,780
Daily increase	176	185

SA	Jurisdictions	Commonwealth
Cumulative	1,836,363	2,310,174
Daily increase	482	774

ACT	Jurisdictions	Commonwealth
Cumulative	801,231	762,079
Daily increase	160	232

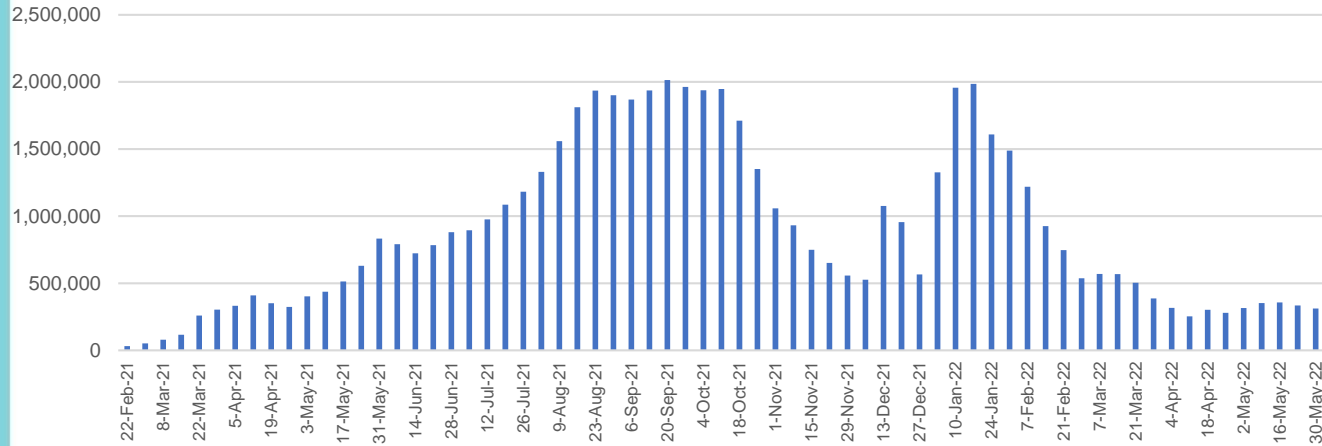
NT	Jurisdictions	Commonwealth
Cumulative	346,489	245,580
Daily increase	75	95

Vaccine milestone charts

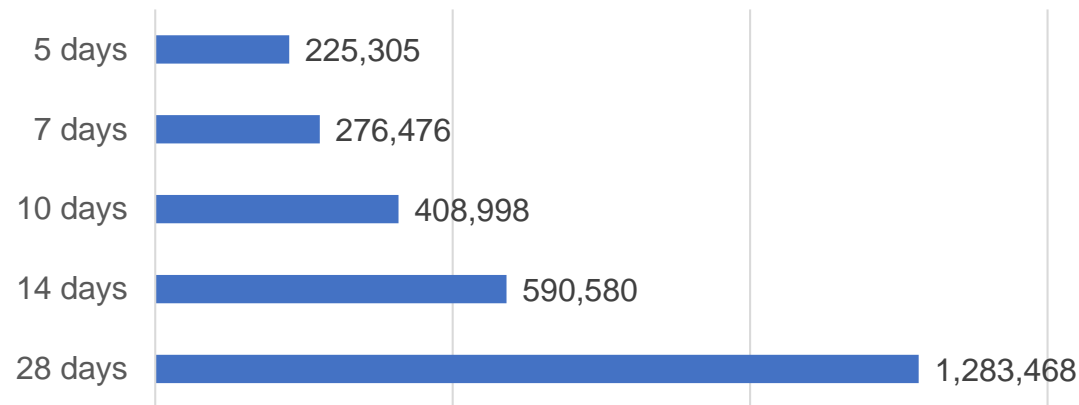
Data as at:
11 Jun 2022

Australia's COVID-19
Vaccine Roadmap

Doses Administered by Week



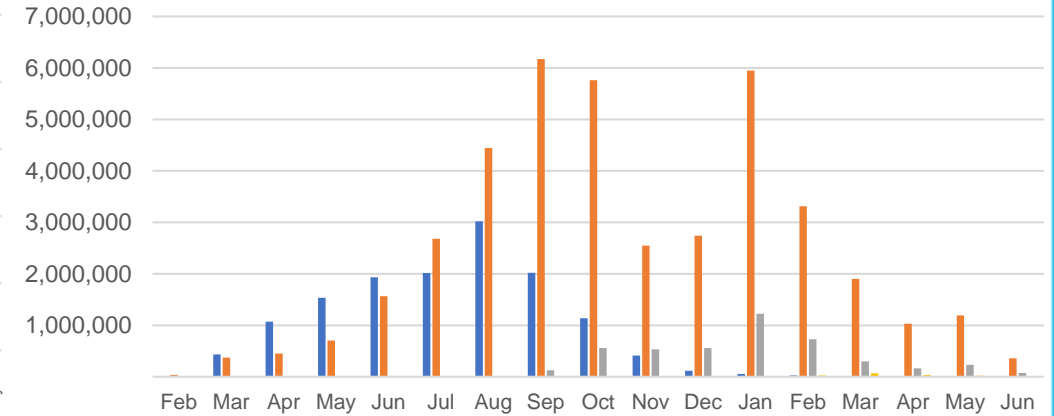
Doses Reported



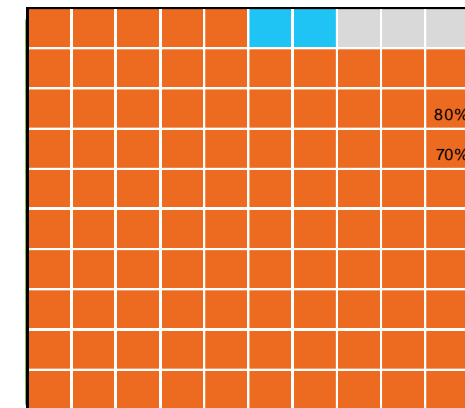
*Sourced from the Australian Immunisation Register.

Doses by administration month and vaccine type

AZ - Vaxzevria Pfizer Moderna Novavax



Eligible population percentage coverage



*Each square represents 1% of the national population.
Squares are filled as milestones are achieved.

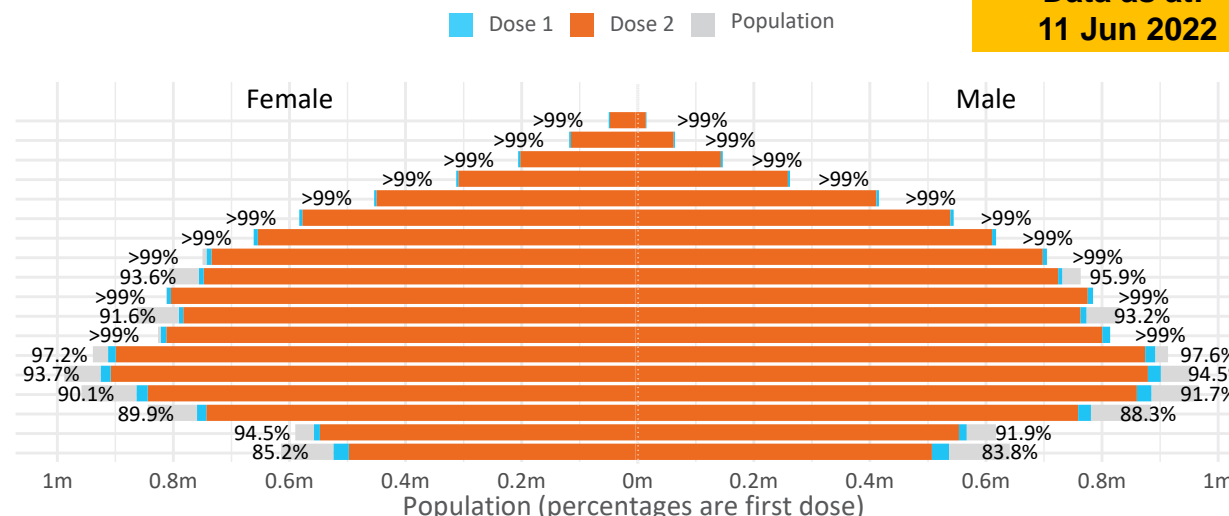
Doses by age and sex

First and second doses by age and sex

Australia's COVID-19
Vaccine Roadmap

Data as at:
11 Jun 2022

Age	Dose 1	Dose 2
95+	64,711 (>99%)	61,286 (>99%)
90-94	180,841 (>99%)	175,327 (>99%)
85-89	349,407 (>99%)	342,605 (>99%)
80-84	570,073 (>99%)	562,907 (>99%)
75-79	862,185 (>99%)	853,785 (>99%)
70-74	1,118,018 (>99%)	1,106,739 (>99%)
65-69	1,269,029 (>99%)	1,254,422 (>99%)
60-64	1,436,489 (>99%)	1,420,124 (98.8%)
55-59	1,475,682 (94.9%)	1,459,039 (93.8%)
50-54	1,582,795 (>99%)	1,565,831 (>99%)
45-49	1,551,261 (92.5%)	1,532,862 (91.4%)
40-44	1,623,605 (>99%)	1,599,607 (98.7%)
35-39	1,792,595 (97.7%)	1,760,451 (95.9%)
30-34	1,818,280 (94.5%)	1,776,469 (92.3%)
25-29	1,743,456 (91.4%)	1,695,797 (88.9%)
20-24	1,532,158 (89.5%)	1,492,218 (87.1%)
16-19	1,115,107 (93.3%)	1,091,163 (91.3%)
12-15	1,051,410 (84.5%)	995,539 (80.0%)

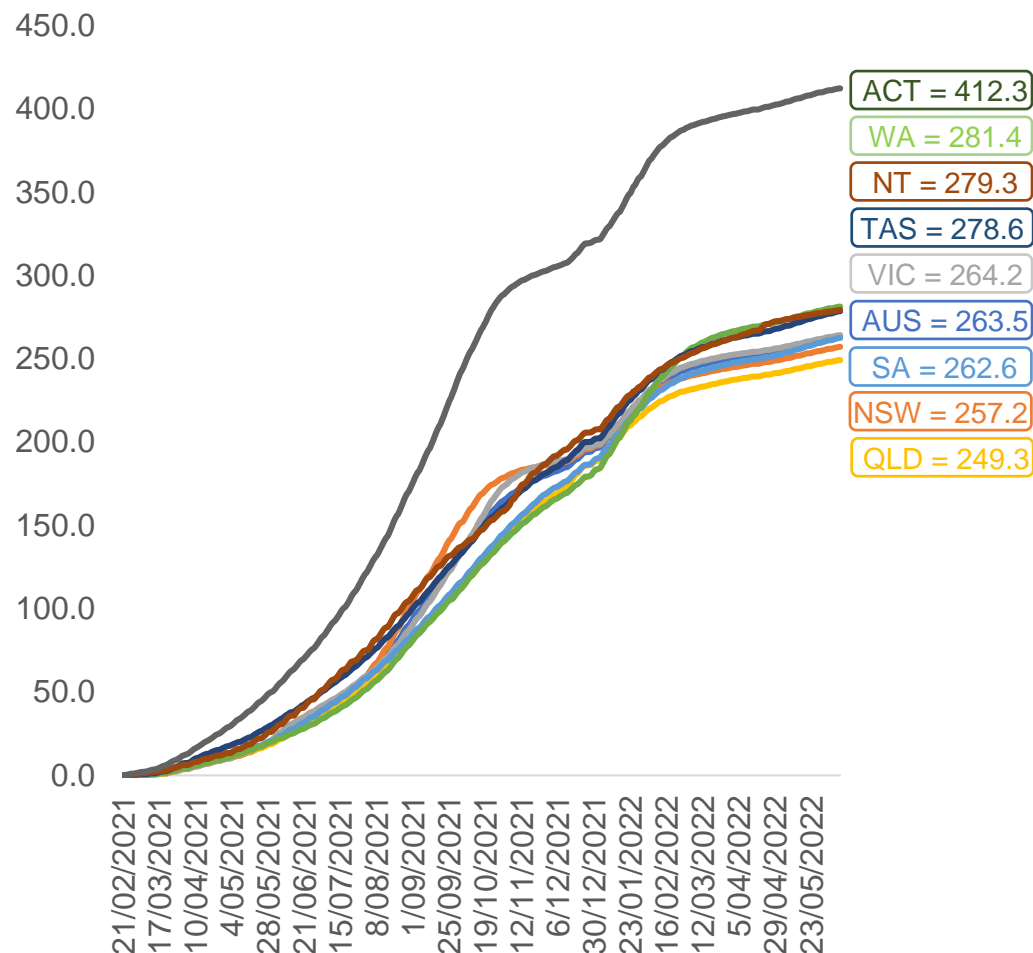


	AUS	ACT	NSW	NT	QLD	SA	TAS	VIC	WA
16 and over - dose 1	20,085,692	353,038	6,335,066	173,877	3,866,842	1,377,099	445,549	5,168,336	2,097,789
16 and over - dose 2	19,750,632	347,336	6,237,641	169,209	3,803,124	1,347,886	436,528	5,090,522	2,066,652
16 and over - population	20,619,959*	344,037	6,565,651	190,571	4,112,707	1,440,400	440,172	5,407,574	2,114,978
16 and over % with dose 1	97.41%	>99%	96.49%	91.24%	94.02%	95.61%	>99%	95.58%	>99%
16 and over % with dose 2	95.78%	>99%	95.00%	88.79%	92.47%	93.58%	>99%	94.14%	97.72%
5 to 11 - dose 1	1,195,644	31,855	357,000	13,179	207,126	83,848	28,539	325,479	140,825
5 to 11 - dose 2	891,108	27,159	271,756	8,680	148,566	62,599	22,974	243,659	101,054
5 to 11 - population	2,276,638	39,789	716,460	24,750	478,731	148,816	45,033	578,499	244,154
5 to 11 % with dose 1	52.52%	80.06%	49.83%	53.25%	43.27%	56.34%	63.37%	56.26%	57.68%
5 to 11 % with dose 2	39.14%	68.26%	37.93%	35.07%	31.03%	42.06%	51.02%	42.12%	41.39%
12 to 15 - dose 1	1,051,410	20,117	323,259	10,787	206,072	68,309	22,898	274,771	115,616
12 to 15 - dose 2	995,539	19,587	308,890	9,728	192,624	64,549	21,775	262,975	107,069
12 to 15 - population	1,243,990	19,693	390,330	13,060	270,146	82,747	26,308	308,611	132,869
12 to 15 % with dose 1	84.52%	>99%	82.82%	82.60%	76.28%	82.55%	87.04%	89.03%	87.02%
12 to 15 % with dose 2	80.03%	>99%	79.14%	74.49%	71.30%	78.01%	82.77%	85.21%	80.58%

*National population will not equal sum of listed jurisdictions due to a small number of people counted in national population residing in some 'other' territories. Sum of state doses will not add to national total as some records are unable to be geocoded to a State or Territory.
Doses sourced from Australian Immunisation Register, population from ABS ERP June 2020

Vaccinations by location

Cumulative total doses administered vs eligible state populations*

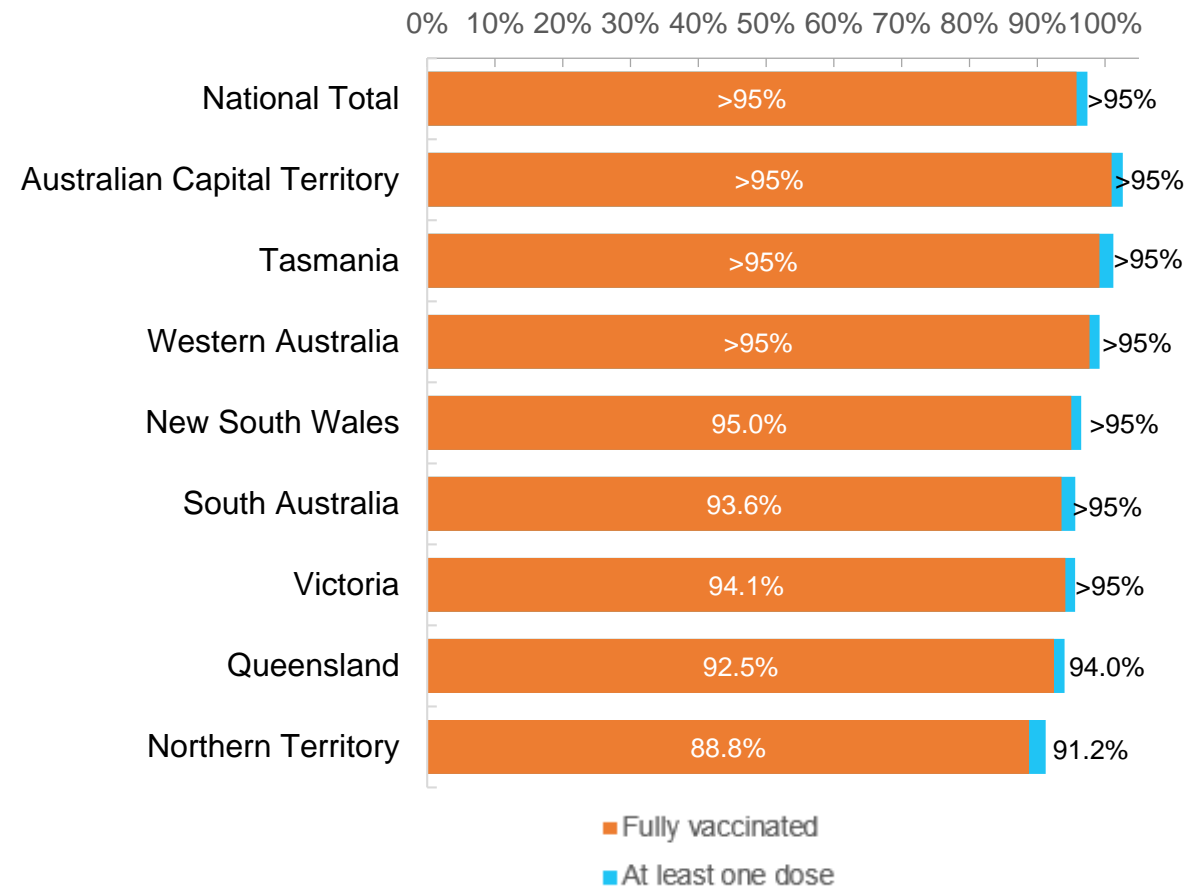


*Not an indication of percentage vaccinated, numbers will exceed 100 due to multiple doses required per person of the population. All doses are included for those aged 12 and above, and are based on vaccination provider location.

Data as at:
11 Jun 2022

Australia's COVID-19
Vaccine Roadmap

First and Second Doses by residential location



Aboriginal and Torres Strait Islander peoples

Number of people vaccinated

Data as at:
07 Jun 2022
Updated weekly

Australia's COVID-19
Vaccine Roadmap



442,874

people over the age of 16
have had at least one dose

85.0%

of people over the age of 16
have had at least one dose



424,313

people over the age of 16
are fully vaccinated

81.4%

of people over the age of 16 are
fully vaccinated



People aged 12 – 15 years

48,180

68.1%
At least one dose

42,347

59.9%
Fully vaccinated

178 Aboriginal community controlled health services (ACCHS)

0#	50	27	44	12	3	21	21
ACT	NSW	NT	QLD	SA	TAS	VIC	WA

Medicare Address State ^{##}	Individuals Dose 1	Individuals Dose 1 %	Individuals Dose 2	Individuals Dose 2 %
Australian Capital Territory	4,796	91.7%	4,675	89.4%
New South Wales	136,052	87.3%	132,990	85.4%
Northern Territory	41,483	89.7%	39,499	85.4%
Queensland	116,374	81.8%	110,974	78.0%
South Australia	20,068	80.5%	18,671	74.9%
Tasmania	13,947	88.8%	13,538	86.2%
Victoria	35,648	90.4%	34,880	88.5%
Western Australia	53,657	86.7%	49,896	80.6%
Unknown/Other Territories	20,849	70.0%	19,190	64.4%
Totals	442,874	85.0%	424,313	81.4%

Source: Australian Immunisation Register

*Identifying as Aboriginal and Torres Strait Islander is optional and the estimated population may be under reported.

**Includes all Aboriginal and Torres Strait Islander peoples who have received a vaccination, not limited to those administered in an ACCHS setting

#ACCHS in the ACT are currently operating as a Commonwealth Vaccine Clinics so not included to avoid double counting

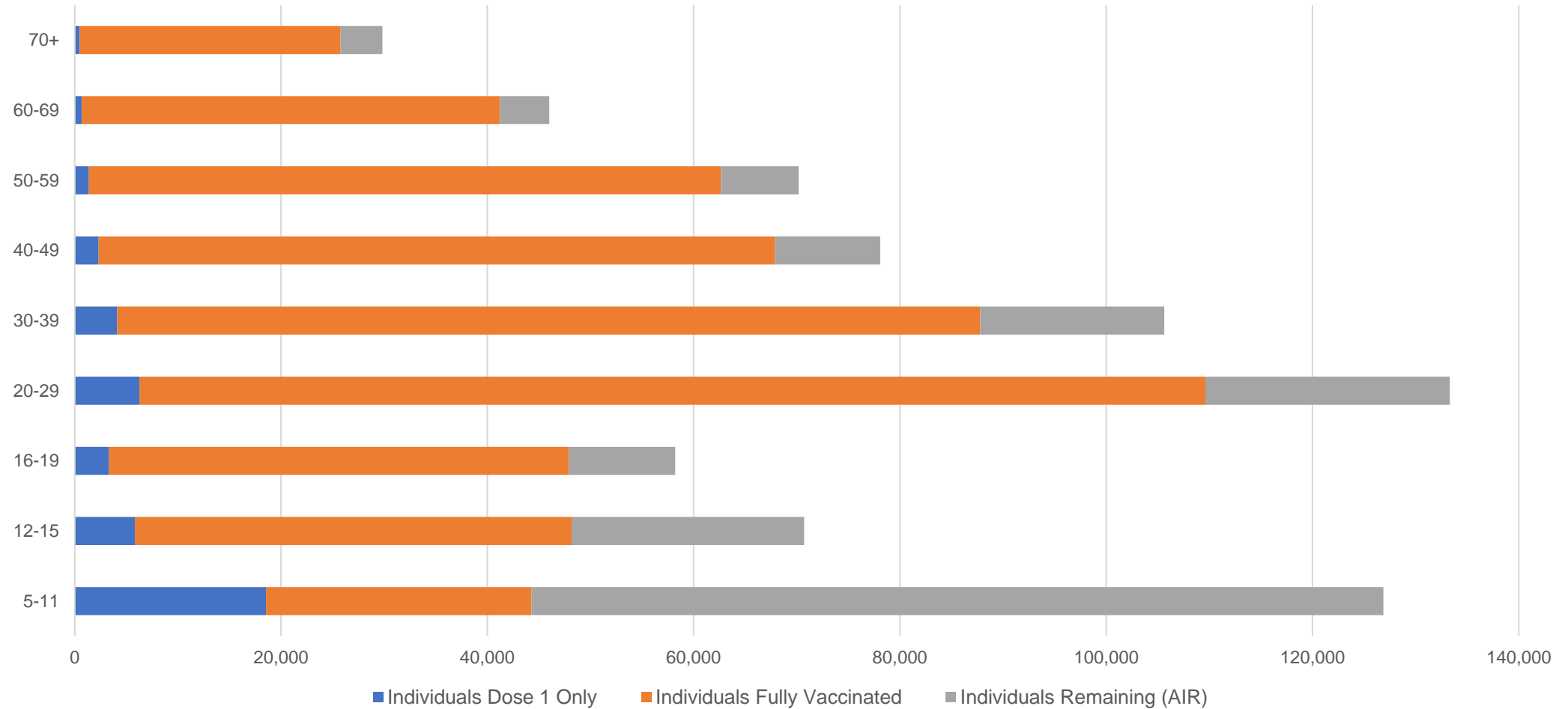
##The above table includes all identified Aboriginal and Torres Strait Islander people who are aged 16 and above by their state of residence.

Aboriginal and Torres Strait Islander peoples

Number of people vaccinated by age

Data as at:
07 Jun 2022
Updated weekly

Australia's COVID-19
Vaccine Roadmap



Source: Australian Immunisation Register

Commonwealth primary care

Data as at:
11 Jun 2022

Australia's COVID-19
Vaccine Roadmap



Primary care vaccine administration sites

5,707	128	178	3,607
GPs	CVCs	ACCHS	Pharmacies



37,147,322 total vaccine doses administered
primary care settings as at 11 June
+ 11,230 recorded in the last 24 hours

Primary care vaccinations by provider type

	Doses administered	Daily increase	7 day increase
General Practice* includes other Commonwealth	29,736,102	7,528	173,826
Pharmacy	7,411,220	3,702	71,036

NSW
12,814,167
(+3,750 daily increase)

VIC
9,224,220
(+2,821 daily increase)

QLD
7,145,258
(+2,001 daily increase)

WA
3,904,322
(+1,589 daily increase)

TAS
704,685
(+187 daily increase)

SA
2,228,449
(+710 daily increase)

ACT
586,996
(+226 daily increase)

NT
220,167
(+64 daily increase)

319,058

doses administered to persons
residing in other territories or with
missing residential information

*General practice includes Commonwealth Vaccination Clinics, Aboriginal Community Health Centres, Royal Flying Doctor Service and other Commonwealth vaccination facilities

Source: Australian Immunisation Register

Data as at:
11 Jun 2022

Commonwealth aged care and disability doses administered



1,309,041 (+ 107 last 24 hours)

Total vaccine doses administered in aged care and disability facilities as at 11 June

Number of doses administered as part of the Commonwealth aged and disability care rollout

NSW
569,976
(**<10** daily increase)

VIC
246,189
(**<10** daily increase)

QLD
208,220
(**+48** daily increase)

WA
110,817
(**<10** daily increase)

TAS
23,592
(**<10** daily increase)

SA
85,906
(**+49** daily increase)

ACT
17,809
(**<10** daily increase)

NT
7,684
(**<10** daily increase)

38,848

doses administered to persons
residing in other territories or with
missing residential information

*Sourced from the Australian Immunisation Register. Includes all persons vaccinated at participating residential aged care, disability and related industry settings.

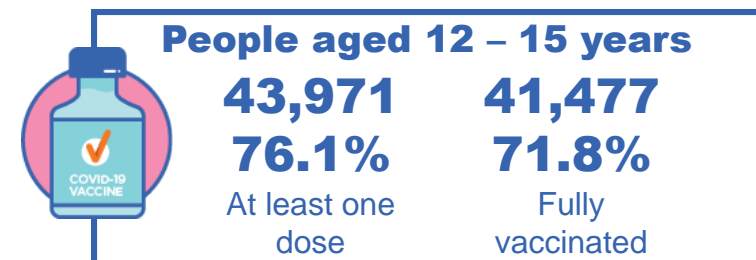
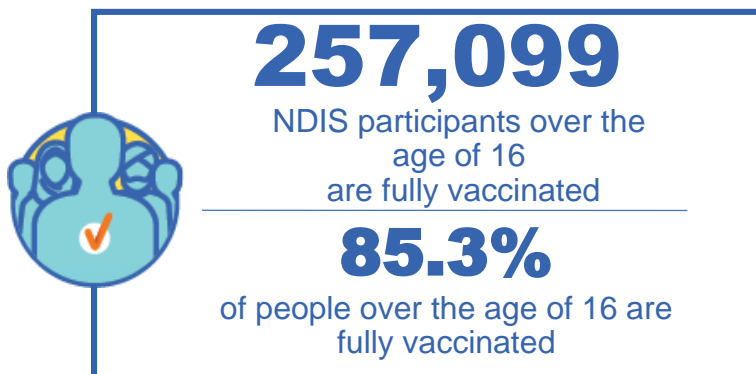
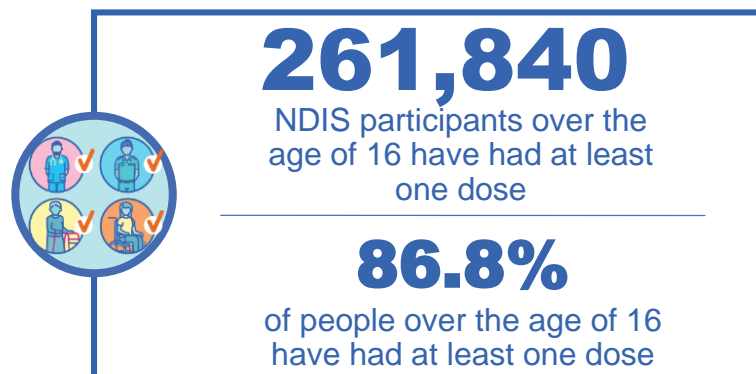
**State level breakdown indicates the residential location and may not align to the state in which the vaccination occurred.

Source: Australian Immunisation Register

National Disability Insurance Scheme (NDIS) reported vaccinations

Data as at:
09 June 2022
Updated weekly

Australia's COVID-19
Vaccine Roadmap



NDIS participant vaccinations

	People aged 16+ with at least one dose	People aged 16+ fully vaccinated	% People aged 16+ with at least one dose	% People aged 16+ fully vaccinated
ACT	4,931	4,865	88.9%	87.7%
NSW	80,199	78,915	87.3%	85.9%
NT	2,271	2,202	77.8%	75.4%
QLD	51,866	50,885	85.1%	83.5%
SA	21,433	20,931	84.6%	82.6%
TAS	6,549	6,397	87.1%	85.1%
VIC	69,568	68,397	88.0%	86.5%
WA	25,023	24,507	88.1%	86.3%
National	261,840	257,099	86.8%	85.3%

Source: Linkage between National Disability Insurance Agency data and the Australian Immunisation Register. Total NDIS participant numbers as at 30 May. Australian Immunisation Register data as at 08 June. Includes all participants regardless of residence type.

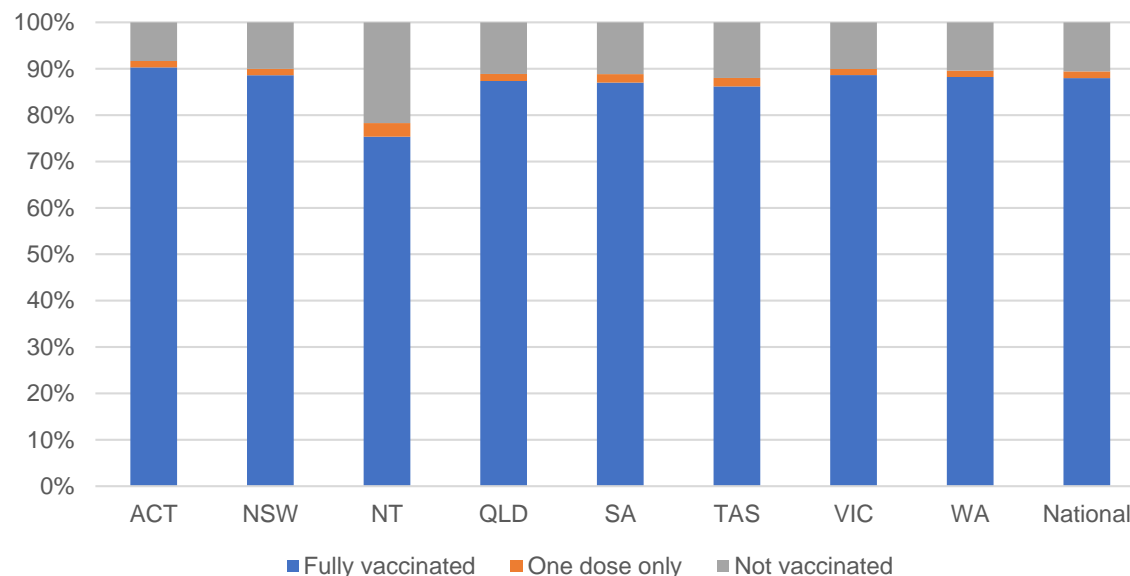
National Disability Insurance Scheme (NDIS) reported vaccinations

Data as at:
09 June 2022
Updated weekly

Australia's COVID-19
Vaccine Roadmap

NATIONAL	Total people with at least one dose	People fully vaccinated	Total number of individuals in cohort	% People with at least one dose	% People fully vaccinated
NDIS participants living in disability accommodation	21,004	20,669	23,469	89.5%	88.1%

NDIS participants in disability and aged care accommodation



Source: Linkage between National Disability Insurance Agency data and the Australian Immunisation Register. Includes participants residing in disability accommodation only.

Source: Total NDIS participant numbers as at 30 May. Participant data as at 08 June. Australian Immunisation Register data as at 08 June. Worker data as at 08 June.

NDIS workforce vaccinations

	NDIS workers with at least one dose	NDIS workers fully vaccinated	% NDIS workers with at least one dose	% NDIS workers fully vaccinated
NSW	127,085	121,461	98.3%	93.9%
VIC	117,822	114,648	98.3%	95.6%
QLD	71,448	70,571	97.8%	96.6%
WA	34,510	33,162	99.0%	95.1%
SA	35,901	33,883	98.6%	93.1%
TAS	10,808	10,577	99.5%	97.3%
ACT	12,334	12,307	99.8%	99.6%
NT	3,949	3,787	99.6%	95.6%
TOTAL	413,857	400,396	98.4%	95.2%

Source: the NDIS Commission has established a requirement for registered NDIS providers who provide intensive disability support services to report on the vaccination status of workers they employ, or otherwise engage, to deliver NDIS-funded supports and services, and who are required to be vaccinated in accordance with in-force state and territory public health orders. The statistics reflect data reported to the NDIS Commission by registered NDIS providers and should be considered indicative and subject to change

Note: Some registered NDIS providers are yet to report on the vaccination status of their workforce. The NDIS Commission is working with those providers around reporting requirements.

Remaining workers not included include those exempt from vaccination requirements, workers whose vaccination status is not yet verified by the provider (such as workers on leave) and provider reporting anomalies.

Residential aged care vaccination rollout

Residential aged care facilities status

177,040

People fully vaccinated

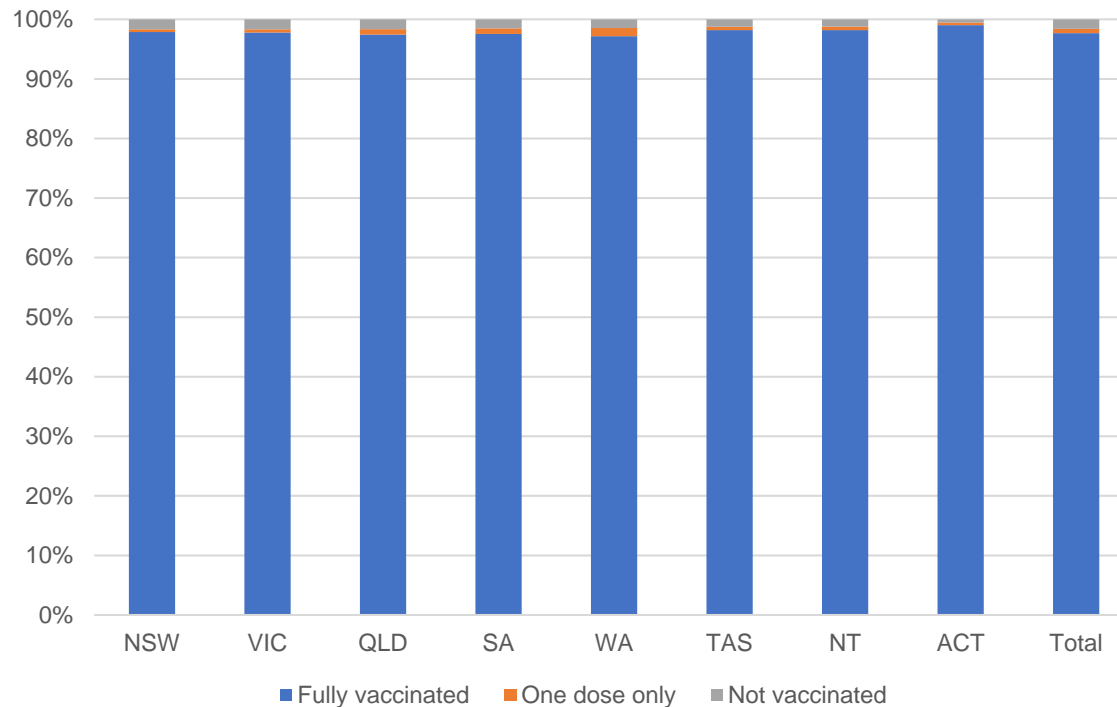
178,323

People with at least one dose

Australia's COVID-19 Vaccine Roadmap

Data as at:
09 June 2022
Updated weekly

Aged care resident vaccinations



Aged care worker vaccinations

Jurisdictions	Total workers with at least one dose	Workers fully vaccinated	% Workers with at least one dose	% Workers fully vaccinated
NSW	77,506	77,493	99.9%	99.8%
VIC	70,702	70,700	99.5%	99.5%
QLD	48,493	48,488	99.6%	99.6%
SA	27,327	27,316	100.0%	100.0%
WA	24,484	24,480	100.0%	100.0%
TAS	7,639	7,638	100.0%	100.0%
NT	933	933	100.0%	100.0%
ACT	2,907	2,907	100.0%	100.0%
Total	259,991	259,955	99.8%	99.7%

Source: My Aged Care Portal vaccination progress

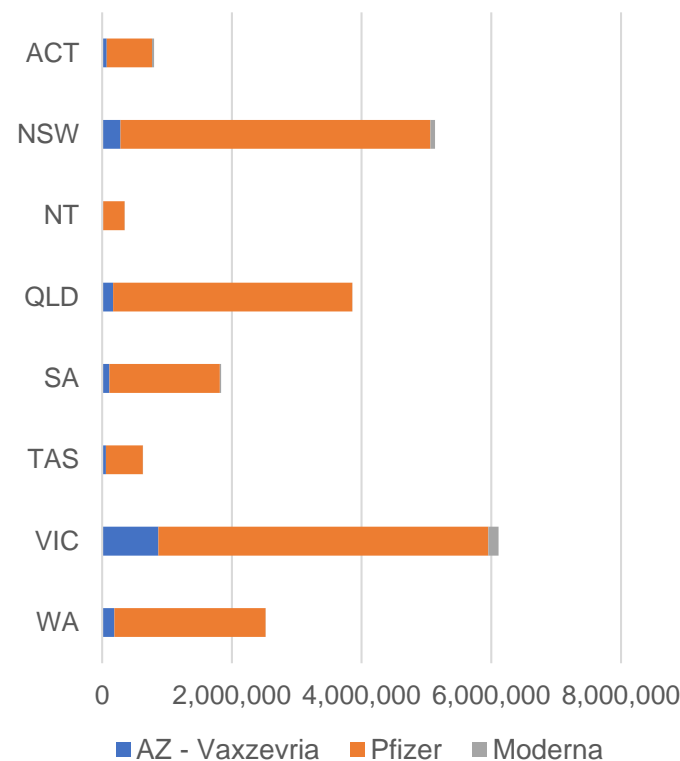
*Status updates are provided by facilities at least once per week. Reporting is updated Monday to Friday to encompass different facility updates being made on different days.

Data is sourced directly from Aged Care Service Providers and is not drawn or closely aligned with data from AIR due to inconsistencies and potential lags in uploading of records.

Data as at:
11 Jun 2022

Jurisdiction administered

Total vaccine doses administered in State and Territory clinics as at 11 June



21,244,813 total vaccine doses administered
in State and Territory clinics as at 11 June
+ **3,360** recorded in the last 24 hours
+ **26,227** recorded in the last 7 days

NSW
5,133,421
(+941 daily increase)

VIC
6,118,725
(+894 daily increase)

QLD
3,857,310
(+277 daily increase)

WA
2,524,627
(+355 daily increase)

TAS
626,647
(+176 daily increase)

SA
1,836,363
(+482 daily increase)

ACT
801,231
(+160 daily increase)

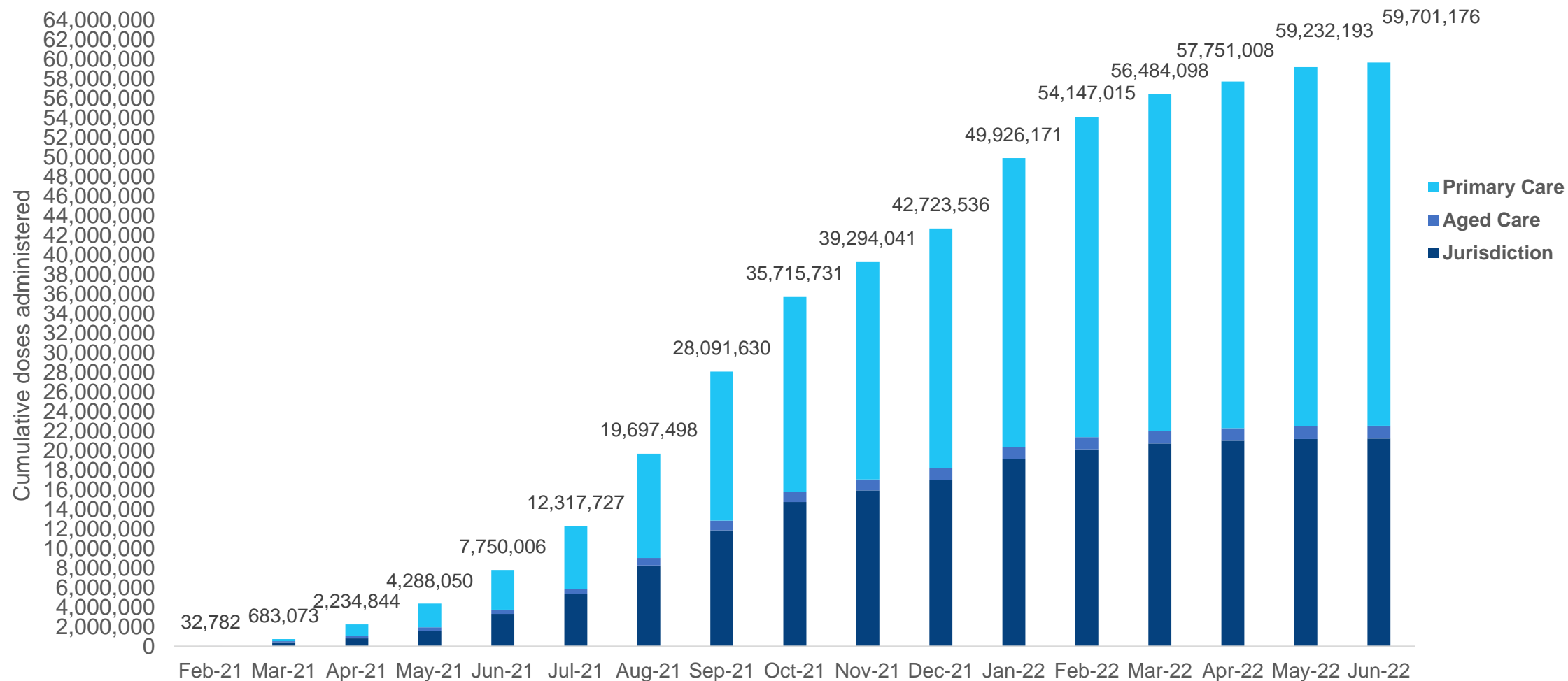
NT
346,489
(+75 daily increase)

*Sourced from the Australian Immunisation Register. Numbers are calculated as difference in daily cumulative reported numbers to allow for historical corrections.

Source: Australian Immunisation Register

Cumulative doses administered by channel

Data as at:
11 Jun 2022

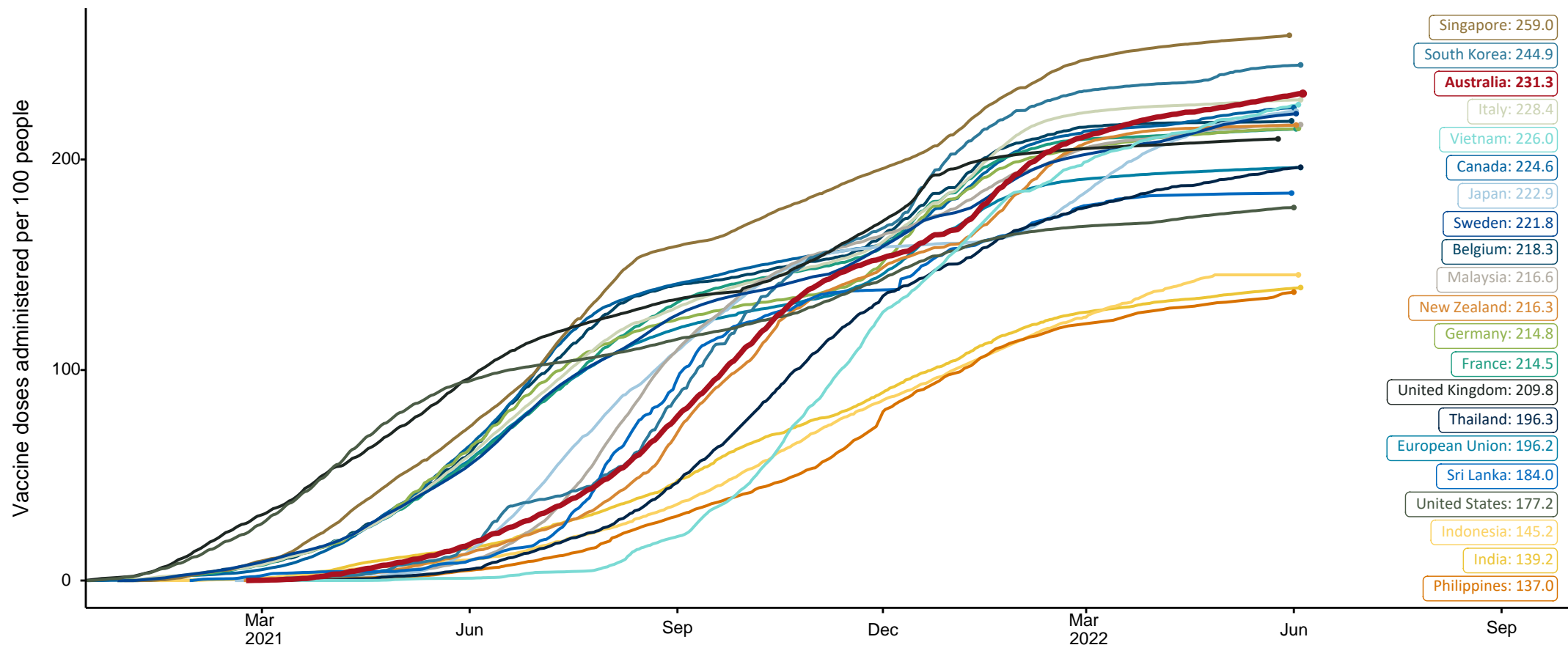


Source: Australian Immunisation Register

COVID-19 vaccine doses per 100, Australia and select countries

Data as at:
05 June 2022
Updated weekly

Australia's COVID-19
Vaccine Roadmap



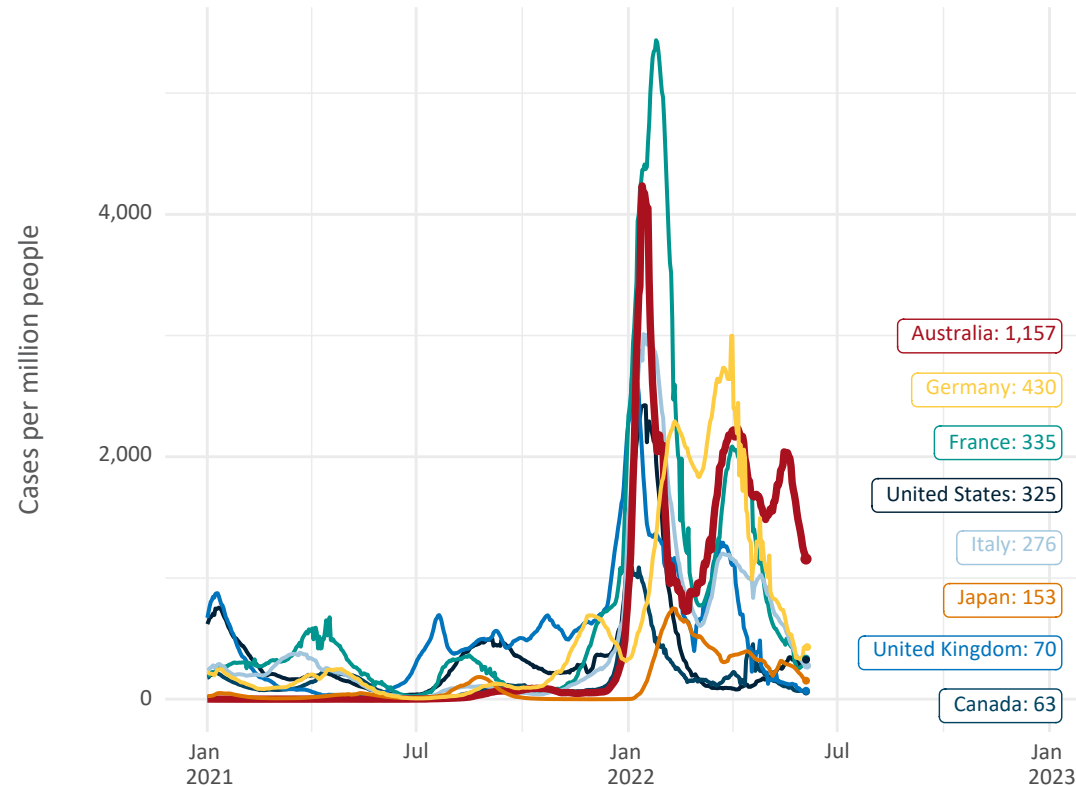
Note: From 11 January 2022, data for Australia includes all doses administered to people 5 and over. Prior to 11 January, data was for 12 and over.
Source: Department of Health (Australia), Our World in Data (international)
Latest data: 05 June

International data – COVID-19

Data as at:
05 June 2022
Updated weekly

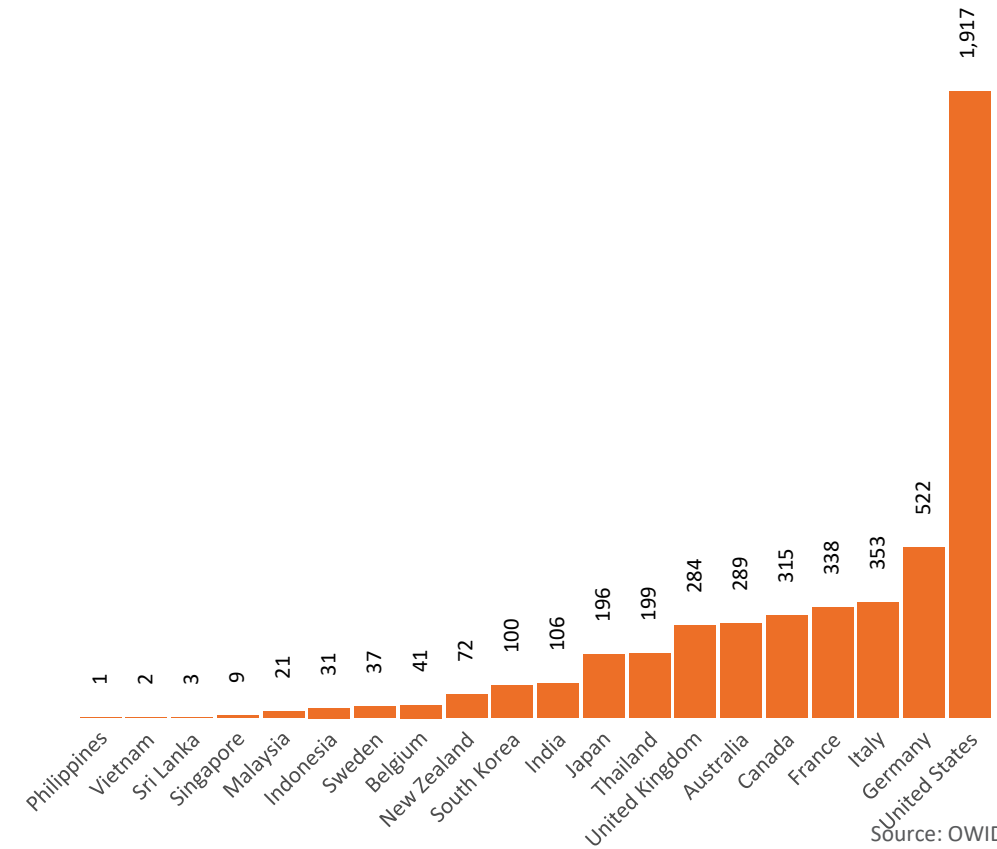
Australia's COVID-19
Vaccine Roadmap

New daily cases per million since 2021, Australia and G7 countries
Smoothed - 7 day average



Source: OWID
Data downloaded: 06 Jun 2022 11:20
Latest data: 05 Jun 2022

COVID-19 deaths in past 7 days - Australia and select countries



Source: OWID
Data downloaded: 06 Jun 2022 11:20
Latest data: 05 Jun 2022