



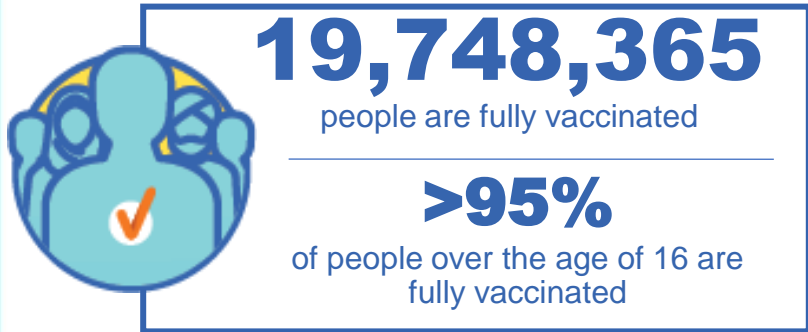
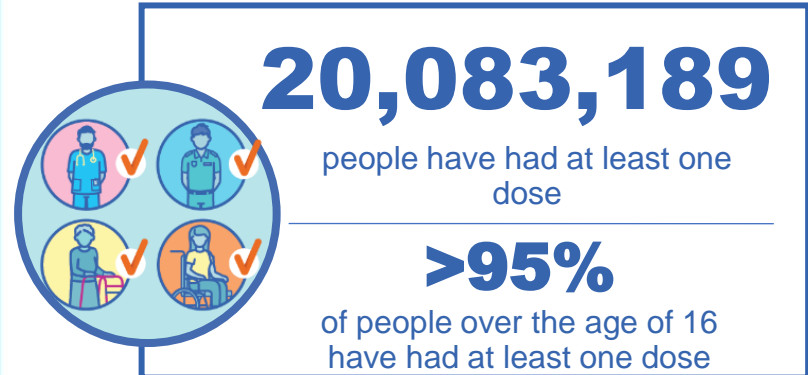
**Australian Government**  
**Operation COVID Shield**

# COVID-19 Vaccine Roll-out

10 June 2022

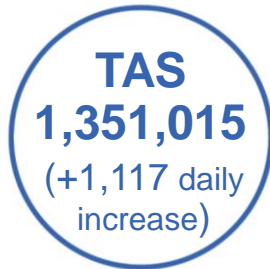
Data as at:  
09 Jun 2022

# Total vaccine doses



**59,640,170** total vaccine doses administered nationally as at 09 June

**+55,129** recorded in the last 24 hours



\*Administration state breakdown indicates state in which a vaccine was administered

\*\*Overall dose count includes instances of more than three doses per person in a small number of cases.

Source: Australian Immunisation Register

# Booster Vaccinations

Data as at:  
09 Jun 2022



**222,695**

Indigenous people who have received three or more doses

**53.8%**

of eligible population (414,284)



**166,241**

Aged Care Residents who have received three or more doses##

**94.0%**

of eligible population (176,922)



**190,555**

NDIS participants

who have received three or more doses#

**74.8%**

of eligible population (254,000)

**21,860**

NDIS residents

who have received three or more doses#

**89.2%**

of eligible population (24,000)



**13,791,400**

total people who have received three or more doses

**+24,544** daily increase

**70.2%** of eligible population (19,616,731)

	Number of People	Daily Increase	% of Eligible
NSW	4,207,300	7,976	67.6%
VIC	3,680,014	6,295	72.5%
QLD	2,387,816	4,476	63.3%
WA	1,694,791	2,473	83.2%
SA	983,299	1,516	73.7%
TAS	315,223	487	72.7%
ACT	272,633	404	78.6%
NT	130,814	345	77.9%

\*People may belong to multiple groups and could be represented in the above breakdowns multiple times.

# NDIS participants data as at 8 June 2022.

## Aged Care Residents data as at 9 June 2022.

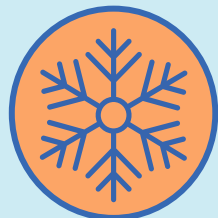
Source: Australian Immunisation Register

**119,510** doses administered to persons residing in other territories or with missing residential information

# Winter / Fourth Doses

Data as at:  
09 Jun 2022

Australia's COVID-19  
Vaccine Roadmap



**1,867,864** total people (16+) who have received four or more doses

**+42,524** daily increase



**1,659,728**

People aged 65+ who have received four or more doses

**52.7%**

of eligible population (3,149,573)

	Number of People 16+	Daily Increase
ACT	37,942	604
NSW	604,599	14,257
NT	8,168	159
QLD	354,259	7,933
SA	150,832	3,214
TAS	52,167	873
VIC	469,825	10,511
WA	180,973	4,736

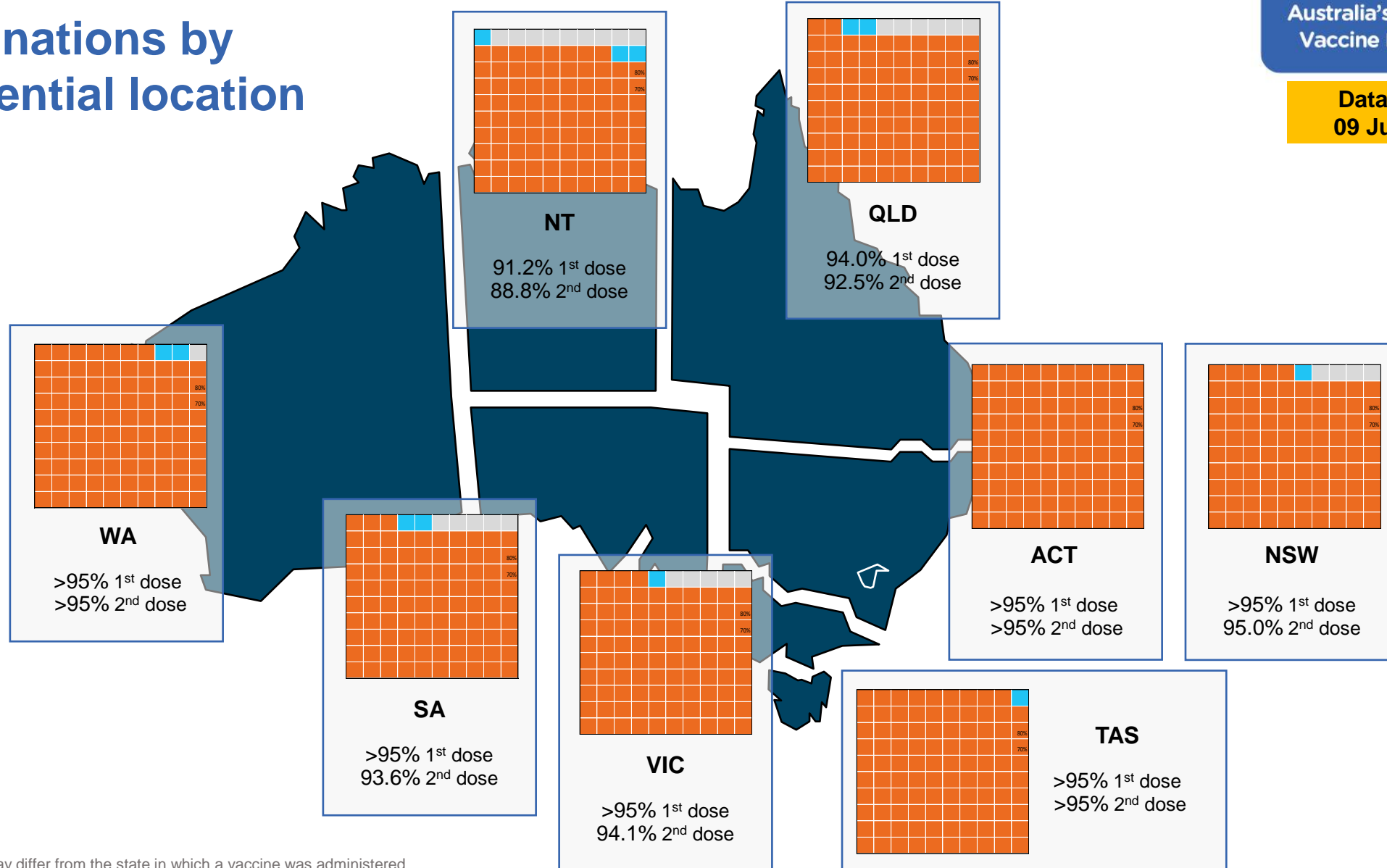
**9,099** doses administered to persons residing in other territories or with missing residential information

\*People become eligible for a winter booster four months after their third dose.

Source: Australian Immunisation Register

Data as at:  
09 Jun 2022

# Vaccinations by residential location



\*Residential state may differ from the state in which a vaccine was administered

# Commonwealth and Jurisdiction vaccine doses administered

Data as at:  
09 Jun 2022



**59,640,170** total vaccine doses administered nationally as at 09 June

+ **55,129** recorded in the last 24 hours



**21,237,488**

doses administered by state and territory facilities

+ **5,119**

recorded in the last 24 hours

NSW	Jurisdictions	Commonwealth
Cumulative	5,132,395	13,365,580
Daily increase	964	17,042

TAS	Jurisdictions	Commonwealth
Cumulative	626,396	724,619
Daily increase	117	1,000

VIC	Jurisdictions	Commonwealth
Cumulative	6,116,556	9,541,088
Daily increase	1,432	12,243

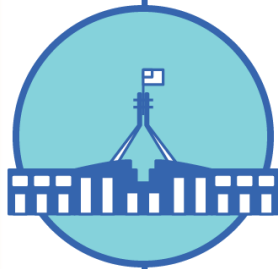
SA	Jurisdictions	Commonwealth
Cumulative	1,835,113	2,306,312
Daily increase	735	3,552

QLD	Jurisdictions	Commonwealth
Cumulative	3,856,521	7,421,011
Daily increase	463	9,816

ACT	Jurisdictions	Commonwealth
Cumulative	800,559	760,917
Daily increase	545	857

WA	Jurisdictions	Commonwealth
Cumulative	2,523,657	4,037,972
Daily increase	767	5,219

NT	Jurisdictions	Commonwealth
Cumulative	346,291	245,183
Daily increase	96	281



**38,402,682**

doses administered by commonwealth facilities

+ **50,010**

recorded in the last 24 hours

**37,094,621** total vaccine doses administered in primary care settings

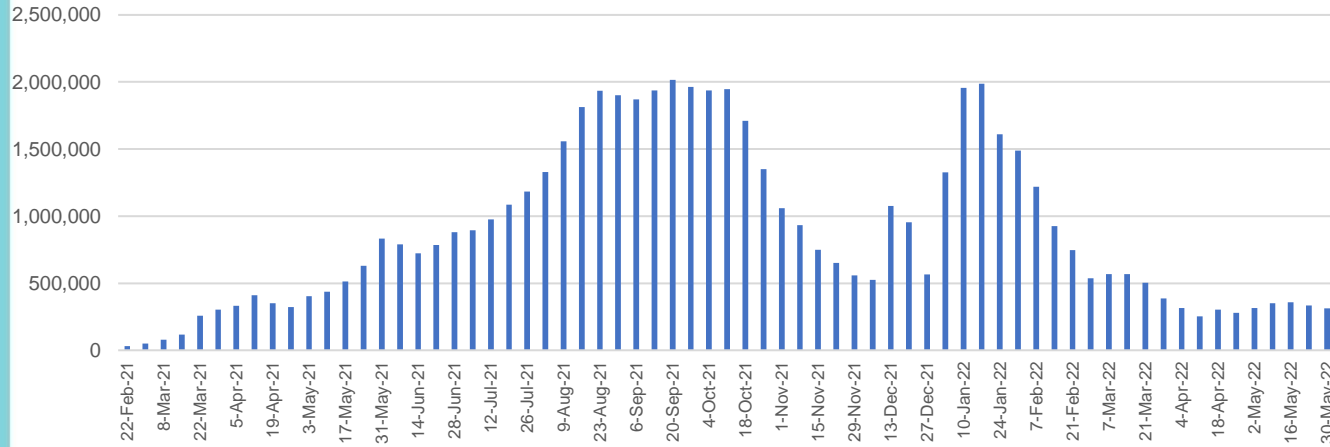
**1,308,061** total vaccine doses administered in aged care and disability settings

# Vaccine milestone charts

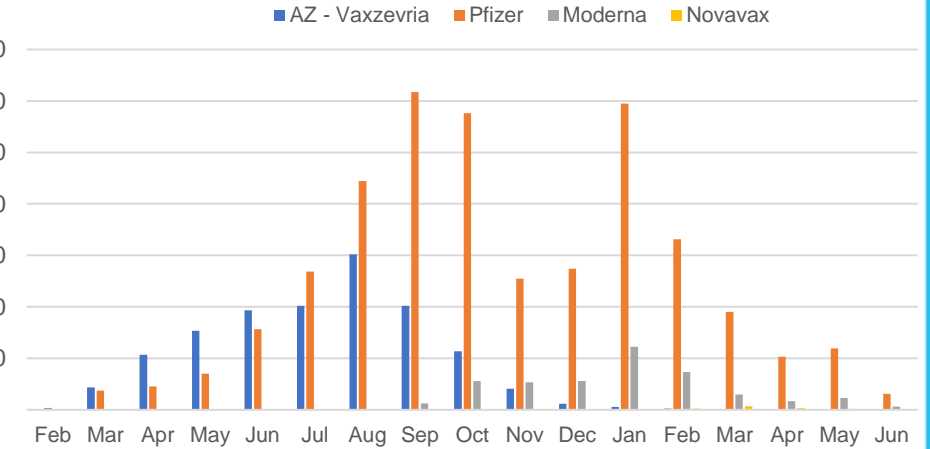
Data as at:  
09 Jun 2022

Australia's COVID-19  
Vaccine Roadmap

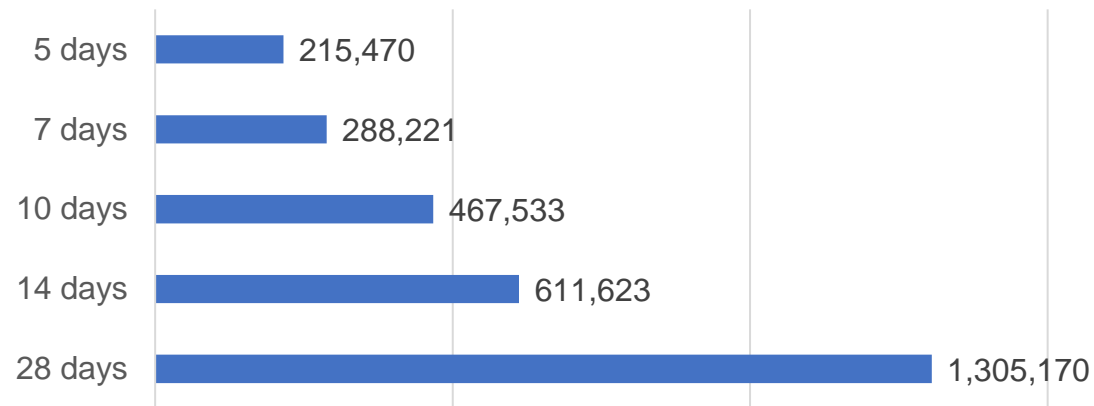
Doses Administered by Week



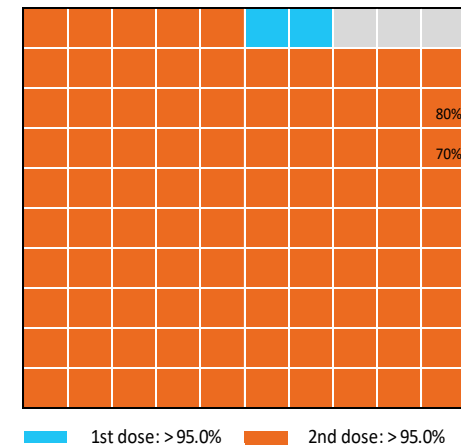
Doses by administration month and vaccine type



Doses Reported



Eligible population percentage coverage



\*Each square represents 1% of the national population. Squares are filled as milestones are achieved.

\*Sourced from the Australian Immunisation Register.

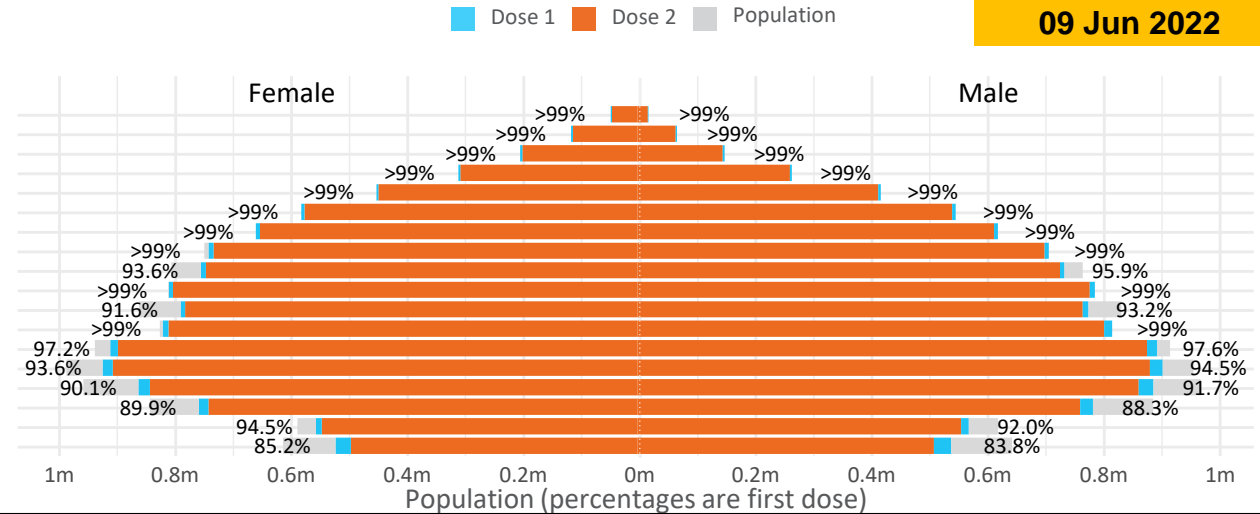
# Doses by age and sex

First and second doses by age and sex

	16+	50+	12-15	5-11
Dose 1	97.40% (20,083,189 doses / 20,619,959 people)	>99% (8,907,315 doses / 8,749,703 people)	84.51% (1,051,285 doses / 1,243,990 people)	52.54% (1,196,091 doses / 2,276,638 people)
Dose 2	95.77% (19,748,365 doses / 20,619,959 people)	>99% (8,800,214 doses / 8,749,703 people)	80.02% (995,469 doses / 1,243,990 people)	39.07% (889,452 doses / 2,276,638 people)

Data as at:  
09 Jun 2022

Age	Dose 1	Dose 2
95+	64,585 (>99%)	61,159 (>99%)
90-94	180,696 (>99%)	175,184 (>99%)
85-89	349,165 (>99%)	342,352 (>99%)
80-84	569,834 (>99%)	562,669 (>99%)
75-79	861,693 (>99%)	853,304 (>99%)
70-74	1,117,867 (>99%)	1,106,602 (>99%)
65-69	1,268,762 (>99%)	1,254,168 (>99%)
60-64	1,436,260 (>99%)	1,419,924 (98.8%)
55-59	1,475,801 (94.9%)	1,459,162 (93.8%)
50-54	1,582,652 (>99%)	1,565,690 (>99%)
45-49	1,551,347 (92.5%)	1,532,946 (91.4%)
40-44	1,623,076 (>99%)	1,599,067 (98.7%)
35-39	1,792,157 (97.7%)	1,760,022 (95.9%)
30-34	1,818,130 (94.5%)	1,776,339 (92.3%)
25-29	1,743,390 (91.4%)	1,695,799 (88.9%)
20-24	1,532,258 (89.5%)	1,492,371 (87.2%)
16-19	1,115,516 (93.3%)	1,091,607 (91.3%)
12-15	1,051,285 (84.5%)	995,469 (80.0%)



	AUS	ACT	NSW	NT	QLD	SA	TAS	VIC	WA
16 and over - dose 1	20,083,189	352,958	6,334,240	173,852	3,866,227	1,376,892	445,496	5,167,587	2,097,532
16 and over - dose 2	19,748,365	347,261	6,236,874	169,186	3,802,517	1,347,709	436,477	5,089,898	2,066,409
16 and over - population	20,619,959*	344,037	6,565,651	190,571	4,112,707	1,440,400	440,172	5,407,574	2,114,978
16 and over % with dose 1	97.40%	>99%	96.48%	91.23%	94.01%	95.59%	>99%	95.56%	>99%
16 and over % with dose 2	95.77%	>99%	94.99%	88.78%	92.46%	93.56%	>99%	94.13%	97.70%
5 to 11 - dose 1	1,196,091	31,867	357,137	13,180	207,279	83,853	28,544	325,519	140,898
5 to 11 - dose 2	889,452	27,146	271,242	8,651	148,408	62,403	22,973	243,129	100,850
5 to 11 - population	2,276,638	39,789	716,460	24,750	478,731	148,816	45,033	578,499	244,154
5 to 11 % with dose 1	52.54%	80.09%	49.85%	53.25%	43.30%	56.35%	63.38%	56.27%	57.71%
5 to 11 % with dose 2	39.07%	68.22%	37.86%	34.95%	31.00%	41.93%	51.01%	42.03%	41.31%
12 to 15 - dose 1	1,051,285	20,106	323,180	10,794	206,058	68,306	22,892	274,705	115,629
12 to 15 - dose 2	995,469	19,573	308,825	9,728	192,657	64,545	21,773	262,895	107,097
12 to 15 - population	1,243,990	19,693	390,330	13,060	270,146	82,747	26,308	308,611	132,869
12 to 15 % with dose 1	84.51%	>99%	82.80%	82.65%	76.28%	82.55%	87.02%	89.01%	87.02%
12 to 15 % with dose 2	80.02%	>99%	79.12%	74.49%	71.32%	78.00%	82.76%	85.19%	80.60%

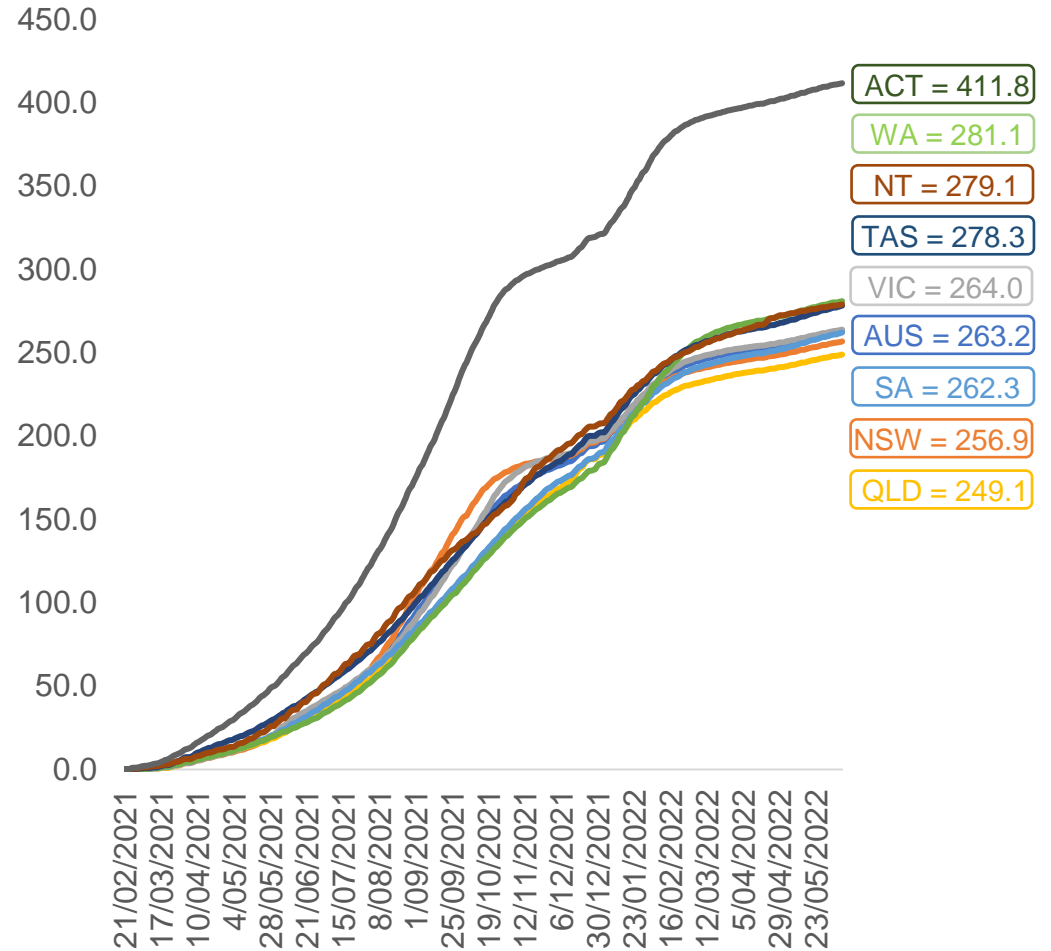
\*National population will not equal sum of listed jurisdictions due to a small number of people counted in national population residing in some 'other' territories. Sum of state doses will not add to national total as some records are unable to be geocoded to a State or Territory. Doses sourced from Australian Immunisation Register, population from ABS ERP June 2020



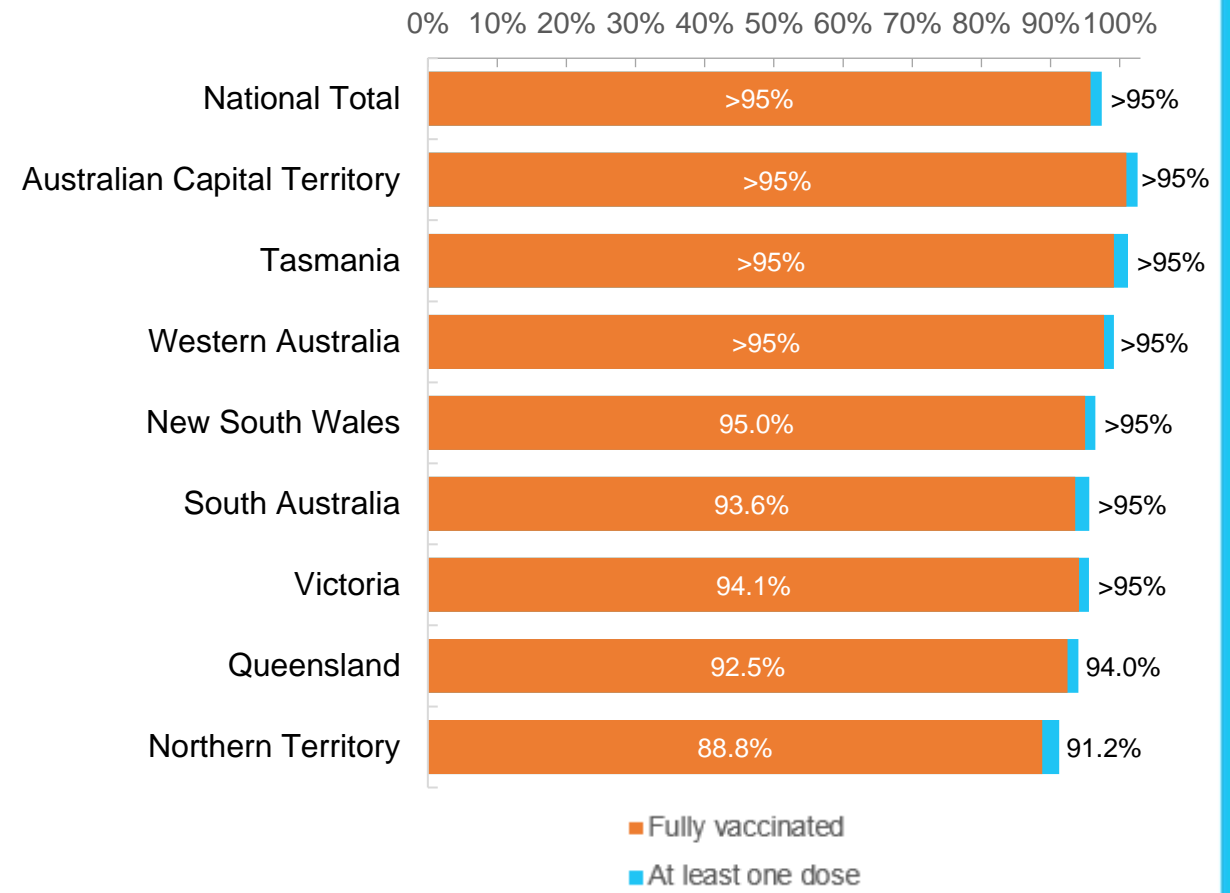
Data as at:  
09 Jun 2022

# Vaccinations by location

Cumulative total doses administered vs eligible state populations\*



First and Second Doses by residential location



\*Not an indication of percentage vaccinated, numbers will exceed 100 due to multiple doses required per person of the population. All doses are included for those aged 12 and above, and are based on vaccination provider location.

# Aboriginal and Torres Strait Islander peoples

## Number of people vaccinated

Data as at:  
07 Jun 2022  
Updated weekly

Australia's COVID-19  
Vaccine Roadmap



**442,874**

people over the age of 16  
have had at least one dose

**85.0%**

of people over the age of 16  
have had at least one dose



**424,313**

people over the age of 16  
are fully vaccinated

**81.4%**

of people over the age of 16 are  
fully vaccinated



People aged 12 – 15 years

**48,180**

**42,347**

**68.1%**

At least one dose

**59.9%**

Fully vaccinated

### 178 Aboriginal community controlled health services (ACCHS)

0#	50	27	44	12	3	21	21
<b>ACT</b>	<b>NSW</b>	<b>NT</b>	<b>QLD</b>	<b>SA</b>	<b>TAS</b>	<b>VIC</b>	<b>WA</b>

Medicare Address State <sup>##</sup>	Individuals Dose 1	Individuals Dose 1 %	Individuals Dose 2	Individuals Dose 2 %
Australian Capital Territory	4,796	91.7%	4,675	89.4%
New South Wales	136,052	87.3%	132,990	85.4%
Northern Territory	41,483	89.7%	39,499	85.4%
Queensland	116,374	81.8%	110,974	78.0%
South Australia	20,068	80.5%	18,671	74.9%
Tasmania	13,947	88.8%	13,538	86.2%
Victoria	35,648	90.4%	34,880	88.5%
Western Australia	53,657	86.7%	49,896	80.6%
Unknown/Other Territories	20,849	70.0%	19,190	64.4%
<b>Totals</b>	<b>442,874</b>	<b>85.0%</b>	<b>424,313</b>	<b>81.4%</b>

Source: Australian Immunisation Register

\*Identifying as Aboriginal and Torres Strait Islander is optional and the estimated population may be under reported.

\*\*Includes all Aboriginal and Torres Strait Islander peoples who have received a vaccination, not limited to those administered in an ACCHS setting

#ACCHS in the ACT are currently operating as a Commonwealth Vaccine Clinics so not included to avoid double counting

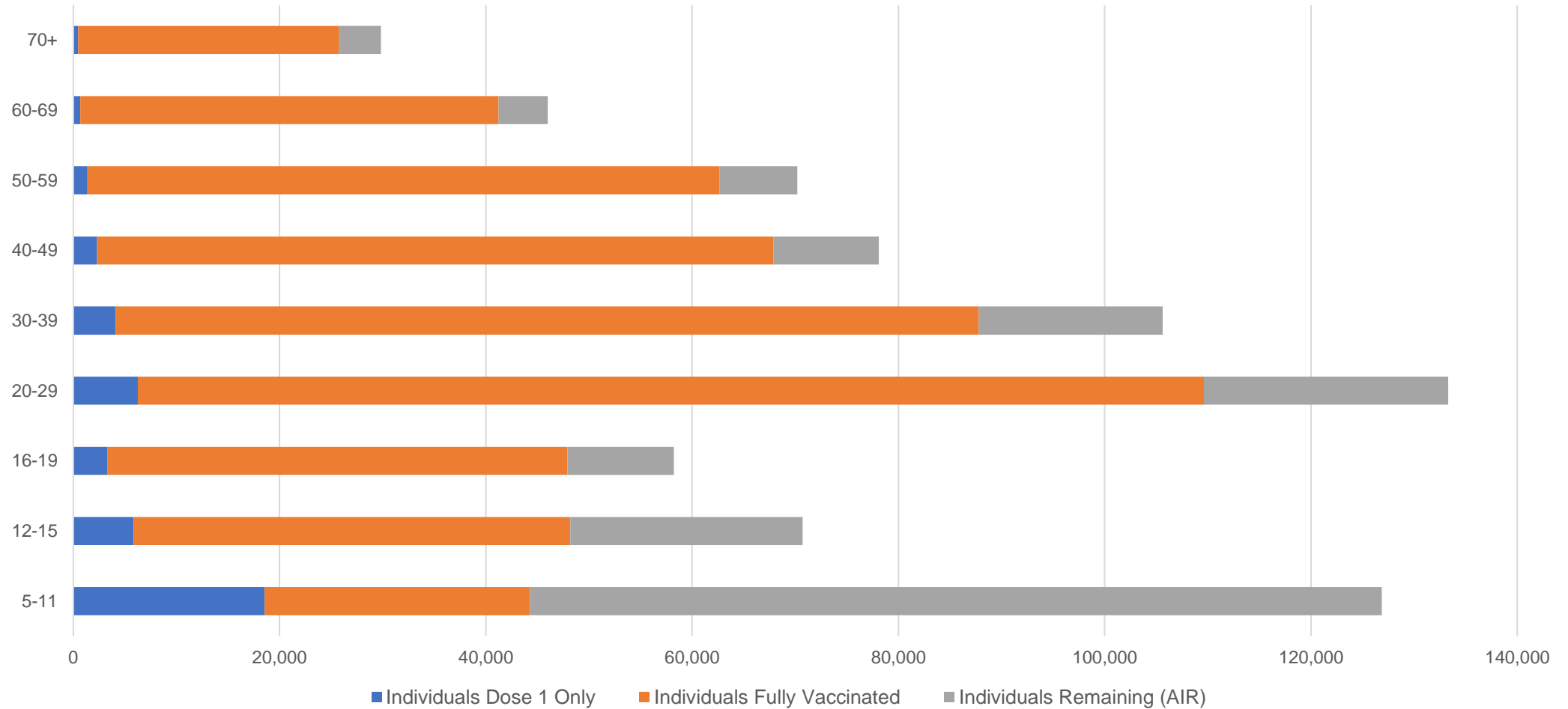
##The above table includes all identified Aboriginal and Torres Strait Islander people who are aged 16 and above by their state of residence.

# Aboriginal and Torres Strait Islander peoples

## Number of people vaccinated by age

Data as at:  
07 Jun 2022  
Updated weekly

Australia's COVID-19  
Vaccine Roadmap



Source: Australian Immunisation Register

# Commonwealth primary care

Data as at:  
09 Jun 2022

Australia's COVID-19  
Vaccine Roadmap



## Primary care vaccine administration sites

<b>5,715</b>	<b>128</b>	<b>178</b>	<b>3,607</b>
GPs	CVCs	ACCHS	Pharmacies



**37,094,621** total vaccine doses administered  
primary care settings as at 09 June  
**+ 48,579** recorded in the last 24 hours

## Primary care vaccinations by provider type

	Doses administered	Daily increase	7 day increase
<b>General Practice*</b> includes other Commonwealth	29,699,926	34,606	180,877
<b>Pharmacy</b>	7,394,695	13,973	73,261

**NSW**  
**12,795,944**  
(+16,351 daily increase)

**VIC**  
**9,210,539**  
(+11,877 daily increase)

**QLD**  
**7,135,796**  
(+9,392 daily increase)

**WA**  
**3,898,864**  
(+4,558 daily increase)

**TAS**  
**703,472**  
(+1,016 daily increase)

**SA**  
**2,224,733**  
(+3,393 daily increase)

**ACT**  
**586,076**  
(+729 daily increase)

**NT**  
**219,866**  
(+27 daily increase)

**319,331**

doses administered to persons residing in other territories or with missing residential information

\*General practice includes Commonwealth Vaccination Clinics, Aboriginal Community Health Centres, Royal Flying Doctor Service and other Commonwealth vaccination facilities

Source: Australian Immunisation Register

Data as at:  
09 Jun 2022

# Commonwealth aged care and disability doses administered



**1,308,061** (+ 1,431 last 24 hours)

Total vaccine doses administered in aged care and disability facilities as at 09 June

Number of doses administered as part of the Commonwealth aged and disability care rollout

**NSW**  
**569,669**  
(+640 daily increase)

**VIC**  
**246,082**  
(+130 daily increase)

**QLD**  
**208,045**  
(+203 daily increase)

**WA**  
**110,636**  
(+262 daily increase)

**TAS**  
**23,590**  
(<10 daily increase)

**SA**  
**85,791**  
(+94 daily increase)

**ACT**  
**17,768**  
(<10 daily increase)

**NT**  
**7,679**  
(<10 daily increase)

**38,801**

doses administered to persons residing in other territories or with missing residential information

\*Sourced from the Australian Immunisation Register. Includes all persons vaccinated at participating residential aged care, disability and related industry settings.

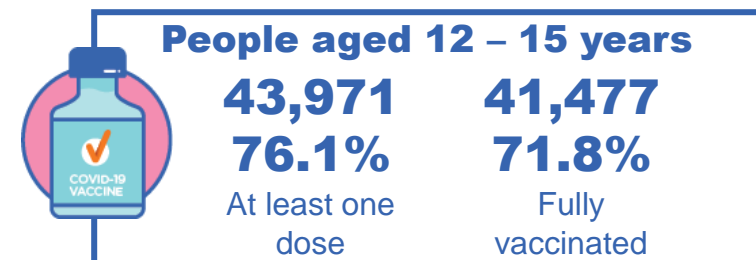
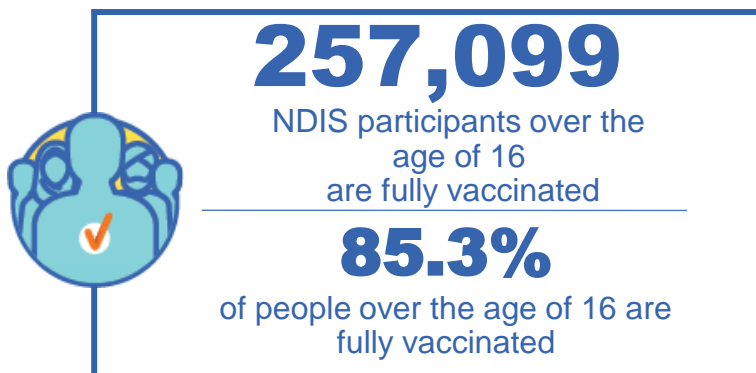
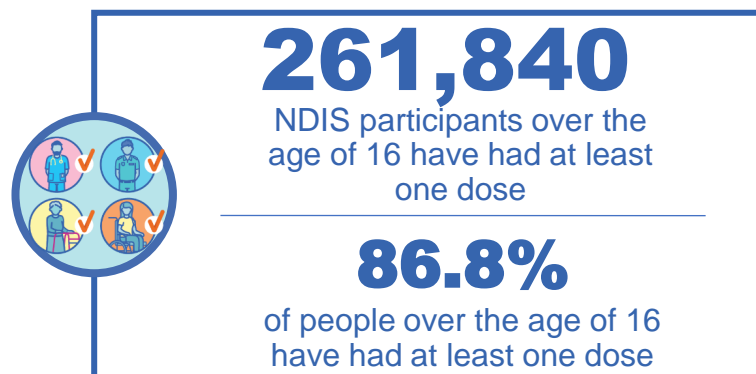
\*\*State level breakdown indicates the residential location and may not align to the state in which the vaccination occurred.

Source: Australian Immunisation Register

# National Disability Insurance Scheme (NDIS) reported vaccinations

Data as at:  
09 June 2022  
Updated weekly

Australia's COVID-19  
Vaccine Roadmap



## NDIS participant vaccinations

	People aged 16+ with at least one dose	People aged 16+ fully vaccinated	% People aged 16+ with at least one dose	% People aged 16+ fully vaccinated
ACT	4,931	4,865	<b>88.9%</b>	<b>87.7%</b>
NSW	80,199	78,915	<b>87.3%</b>	<b>85.9%</b>
NT	2,271	2,202	<b>77.8%</b>	<b>75.4%</b>
QLD	51,866	50,885	<b>85.1%</b>	<b>83.5%</b>
SA	21,433	20,931	<b>84.6%</b>	<b>82.6%</b>
TAS	6,549	6,397	<b>87.1%</b>	<b>85.1%</b>
VIC	69,568	68,397	<b>88.0%</b>	<b>86.5%</b>
WA	25,023	24,507	<b>88.1%</b>	<b>86.3%</b>
<b>National</b>	<b>261,840</b>	<b>257,099</b>	<b>86.8%</b>	<b>85.3%</b>

Source: Linkage between National Disability Insurance Agency data and the Australian Immunisation Register. Total NDIS participant numbers as at 30 May. Australian Immunisation Register data as at 08 June. Includes all participants regardless of residence type.

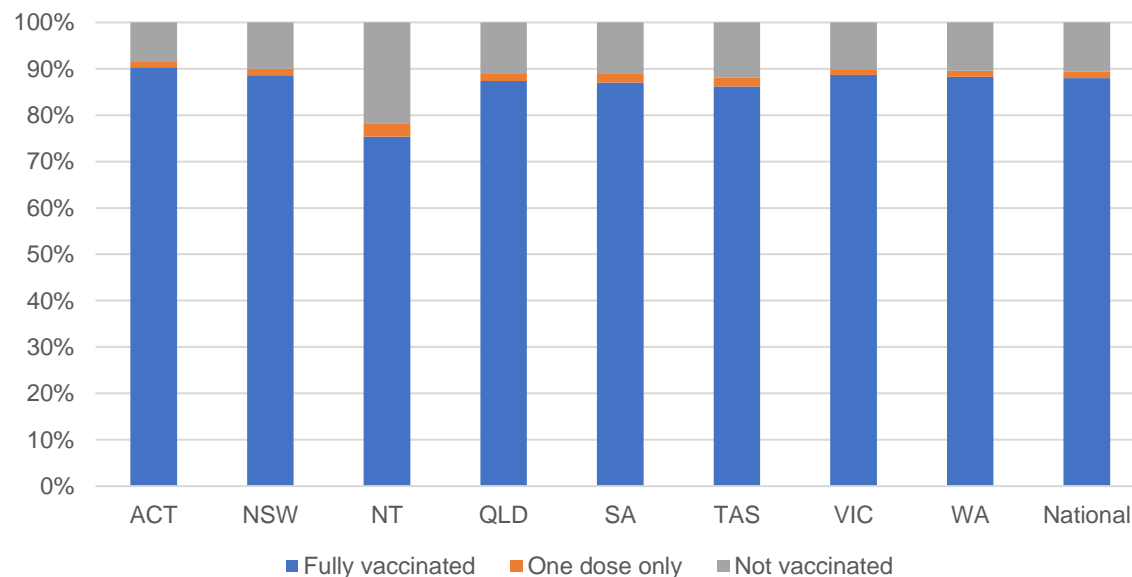
# National Disability Insurance Scheme (NDIS) reported vaccinations

Data as at:  
09 June 2022  
Updated weekly

Australia's COVID-19  
Vaccine Roadmap

NATIONAL	Total people with at least one dose	People fully vaccinated	Total number of individuals in cohort	% People with at least one dose	% People fully vaccinated
NDIS participants living in disability accommodation	21,004	20,669	23,469	89.5%	88.1%

## NDIS participants in disability and aged care accommodation



Source: Linkage between National Disability Insurance Agency data and the Australian Immunisation Register. Includes participants residing in disability accommodation only.

Source: Total NDIS participant numbers as at 30 May. Participant data as at 08 June. Australian Immunisation Register data as at 08 June. Worker data as at 08 June.

## NDIS workforce vaccinations

	NDIS workers with at least one dose	NDIS workers fully vaccinated	% NDIS workers with at least one dose	% NDIS workers fully vaccinated
NSW	127,085	121,461	98.3%	93.9%
VIC	117,822	114,648	98.3%	95.6%
QLD	71,448	70,571	97.8%	96.6%
WA	34,510	33,162	99.0%	95.1%
SA	35,901	33,883	98.6%	93.1%
TAS	10,808	10,577	99.5%	97.3%
ACT	12,334	12,307	99.8%	99.6%
NT	3,949	3,787	99.6%	95.6%
<b>TOTAL</b>	<b>413,857</b>	<b>400,396</b>	<b>98.4%</b>	<b>95.2%</b>

Source: the NDIS Commission has established a requirement for registered NDIS providers who provide intensive disability support services to report on the vaccination status of workers they employ, or otherwise engage, to deliver NDIS-funded supports and services, and who are required to be vaccinated in accordance with in-force state and territory public health orders. The statistics reflect data reported to the NDIS Commission by registered NDIS providers and should be considered indicative and subject to change

Note: Some registered NDIS providers are yet to report on the vaccination status of their workforce. The NDIS Commission is working with those providers around reporting requirements.

Remaining workers not included include those exempt from vaccination requirements, workers whose vaccination status is not yet verified by the provider (such as workers on leave) and provider reporting anomalies.

# Residential aged care vaccination rollout

Residential aged care facilities status

**177,040**

People fully vaccinated

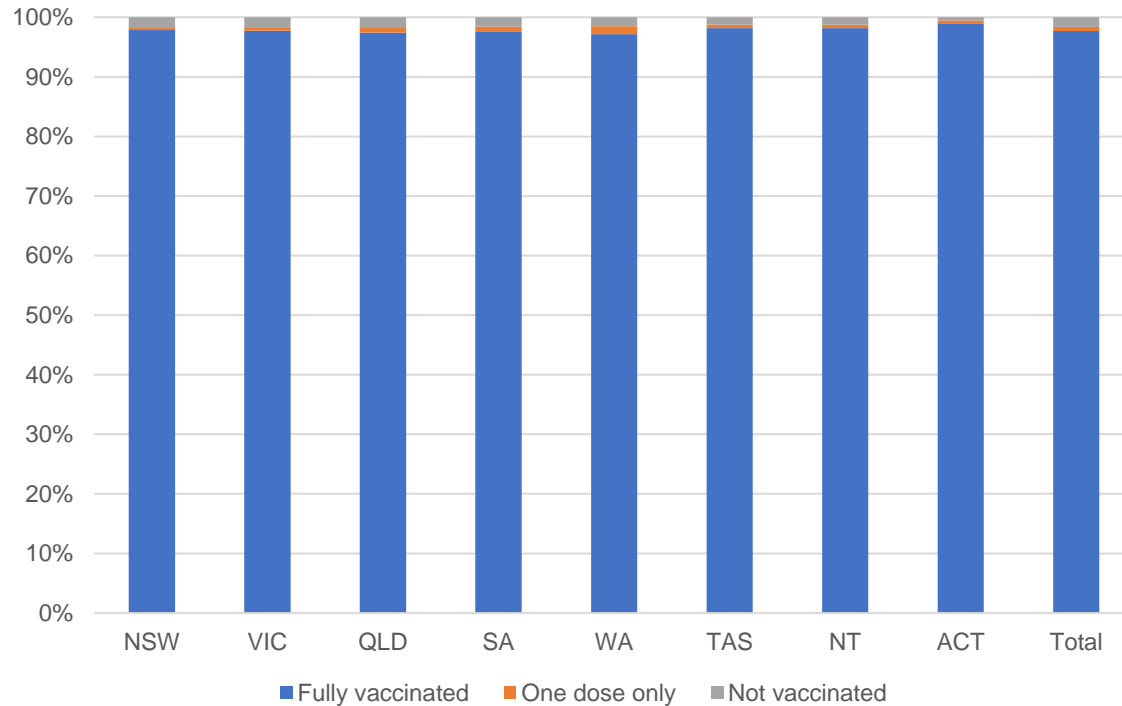
**178,323**

People with at least one dose

Australia's COVID-19 Vaccine Roadmap

Data as at:  
09 June 2022  
Updated weekly

## Aged care resident vaccinations



## Aged care worker vaccinations

Jurisdictions	Total workers with at least one dose	Workers fully vaccinated	% Workers with at least one dose	% Workers fully vaccinated
NSW	77,506	77,493	99.9%	99.8%
VIC	70,702	70,700	99.5%	99.5%
QLD	48,493	48,488	99.6%	99.6%
SA	27,327	27,316	100.0%	100.0%
WA	24,484	24,480	100.0%	100.0%
TAS	7,639	7,638	100.0%	100.0%
NT	933	933	100.0%	100.0%
ACT	2,907	2,907	100.0%	100.0%
<b>Total</b>	<b>259,991</b>	<b>259,955</b>	<b>99.8%</b>	<b>99.7%</b>

Source: My Aged Care Portal vaccination progress

\*Status updates are provided by facilities at least once per week. Reporting is updated Monday to Friday to encompass different facility updates being made on different days.

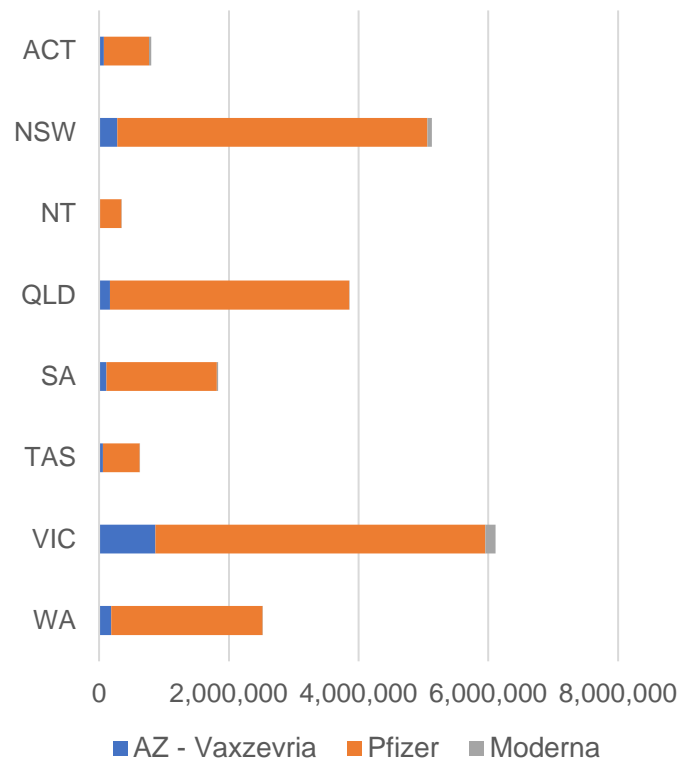
Data is sourced directly from Aged Care Service Providers and is not drawn or closely aligned with data from AIR due to inconsistencies and potential lags in uploading of records.



Data as at:  
09 Jun 2022

## Jurisdiction administered

Total vaccine doses administered in State and Territory clinics as at 09 June



**21,237,488** total vaccine doses administered in State and Territory clinics as at 09 June  
 + **5,119** recorded in the last 24 hours  
 + **28,265** recorded in the last 7 days

**NSW**  
**5,132,395**  
 (+964 daily increase)

**VIC**  
**6,116,556**  
 (+1,432 daily increase)

**QLD**  
**3,856,521**  
 (+463 daily increase)

**WA**  
**2,523,657**  
 (+767 daily increase)

**TAS**  
**626,396**  
 (+117 daily increase)

**SA**  
**1,835,113**  
 (+735 daily increase)

**ACT**  
**800,559**  
 (+545 daily increase)

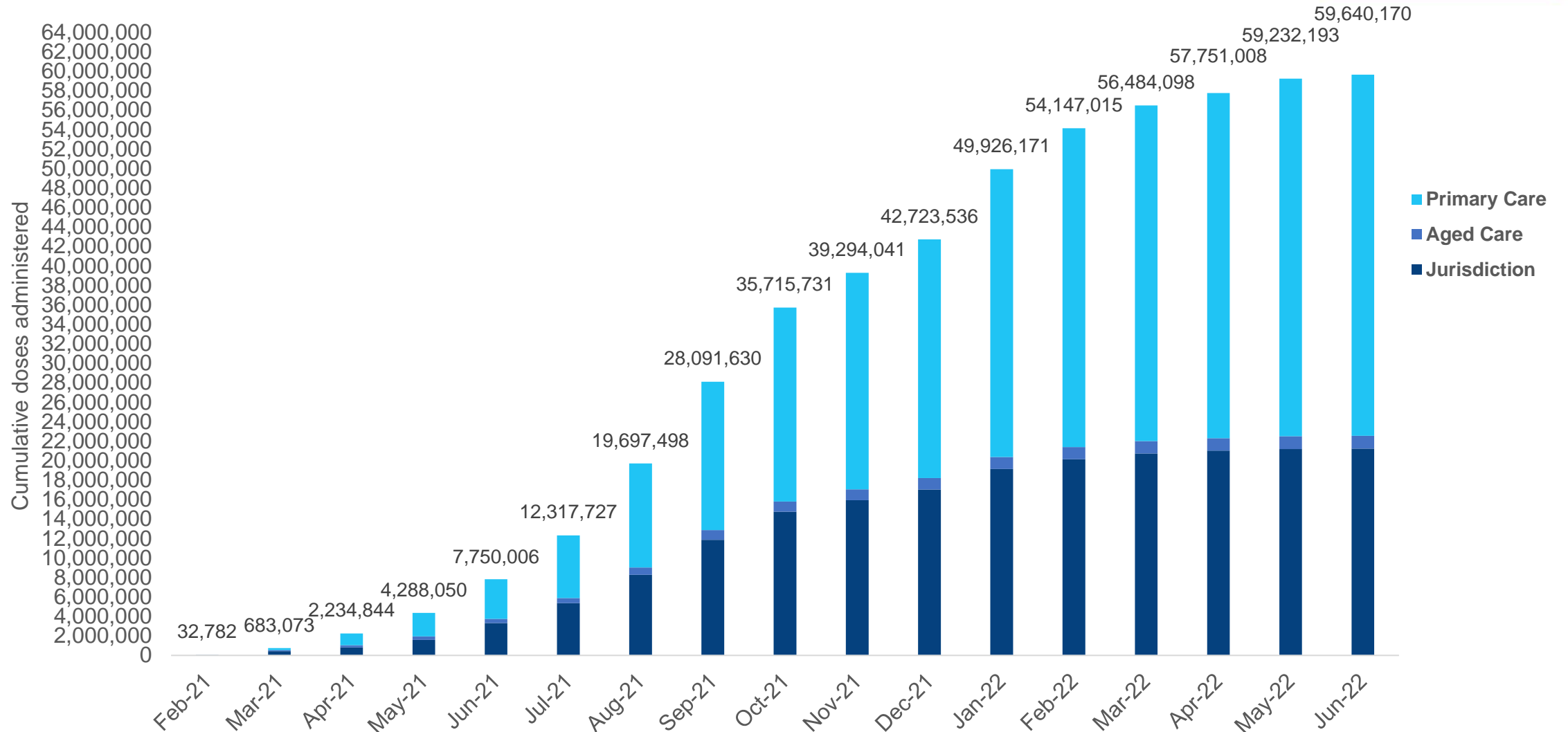
**NT**  
**346,291**  
 (+96 daily increase)

\*Sourced from the Australian Immunisation Register. Numbers are calculated as difference in daily cumulative reported numbers to allow for historical corrections.

Source: Australian Immunisation Register

# Cumulative doses administered by channel

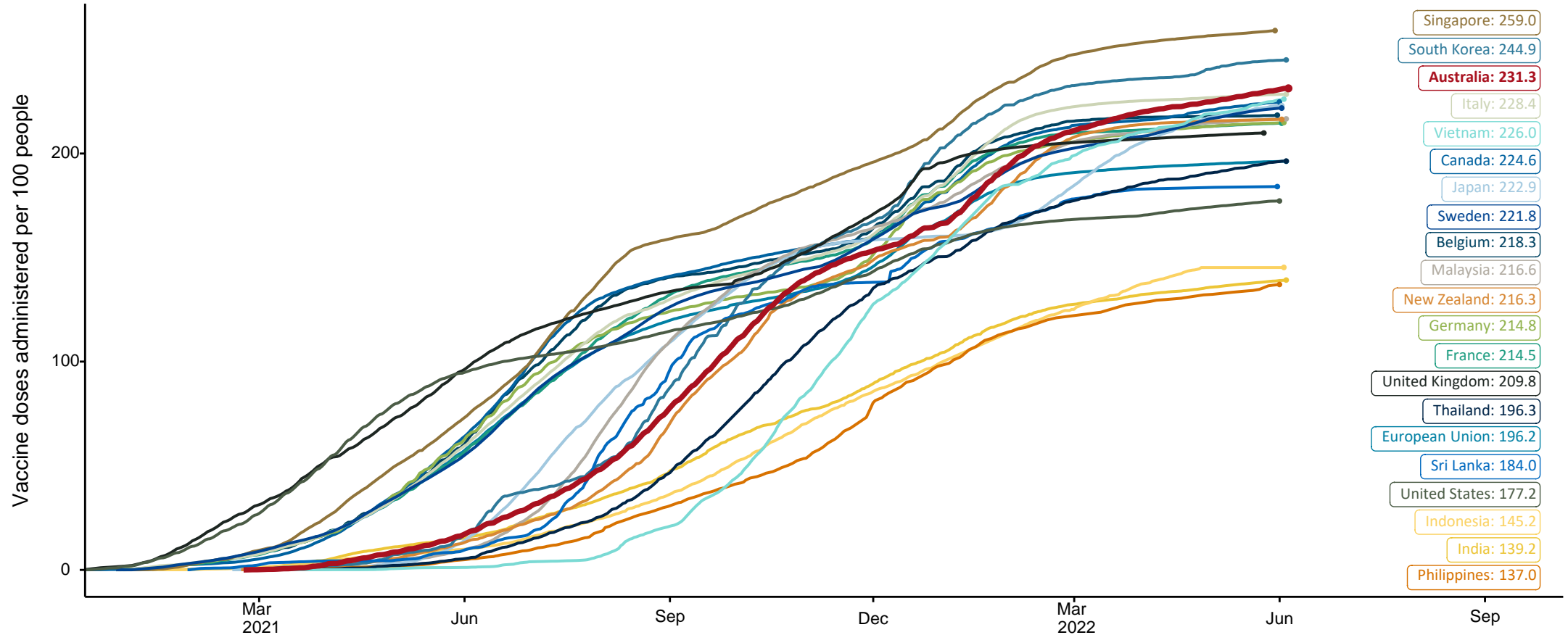
Data as at:  
09 Jun 2022



Source: Australian Immunisation Register

# COVID-19 vaccine doses per 100, Australia and select countries

Data as at:  
05 June 2022  
Updated weekly

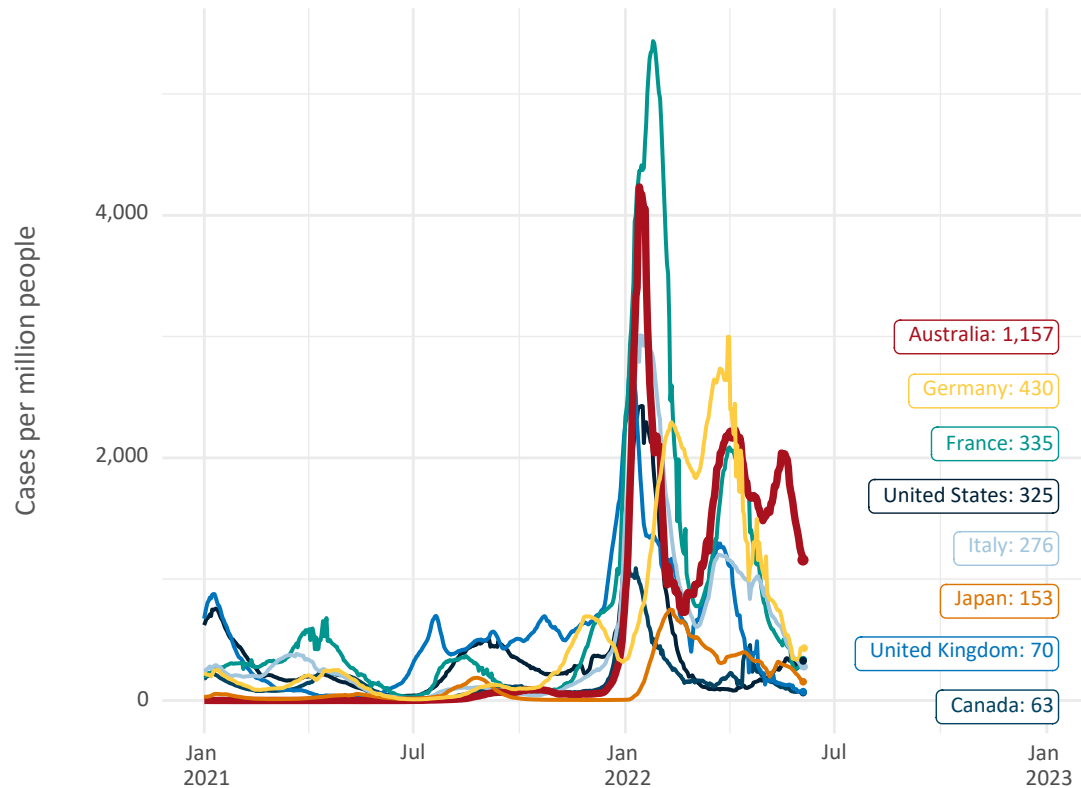


Note: From 11 January 2022, data for Australia includes all doses administered to people 5 and over. Prior to 11 January, data was for 12 and over.  
Source: Department of Health (Australia), Our World in Data (international)  
Latest data: 05 June

Data as at:  
05 June 2022  
Updated weekly

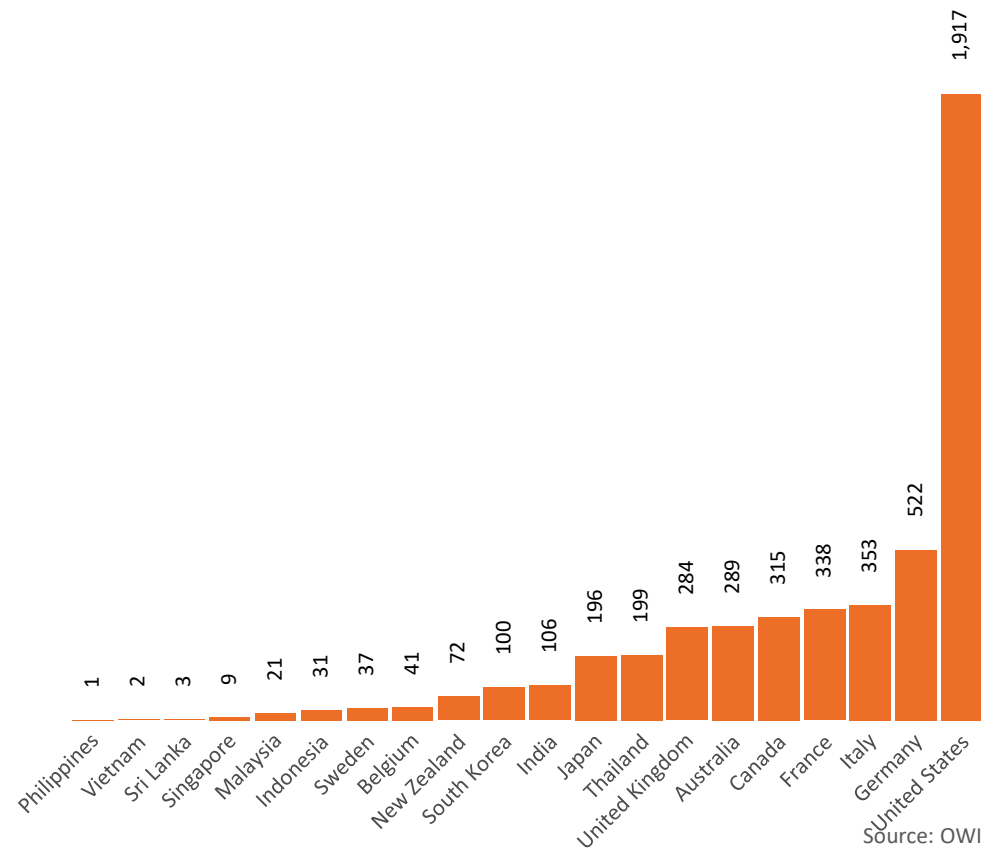
# International data – COVID-19

New daily cases per million since 2021, Australia and G7 countries  
Smoothed - 7 day average



Source: OWID  
Data downloaded: 06 Jun 2022 11:20  
Latest data: 05 Jun 2022

COVID-19 deaths in past 7 days - Australia and select countries



Source: OWID  
Data downloaded: 06 Jun 2022 11:20  
Latest data: 05 Jun 2022