



Australian Government
Operation COVID Shield

COVID-19 Vaccine Roll-out

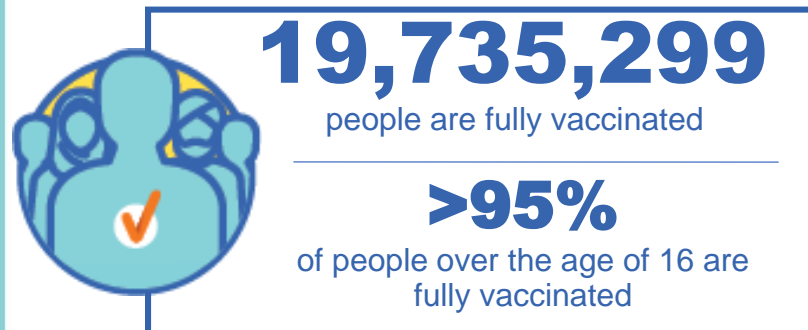
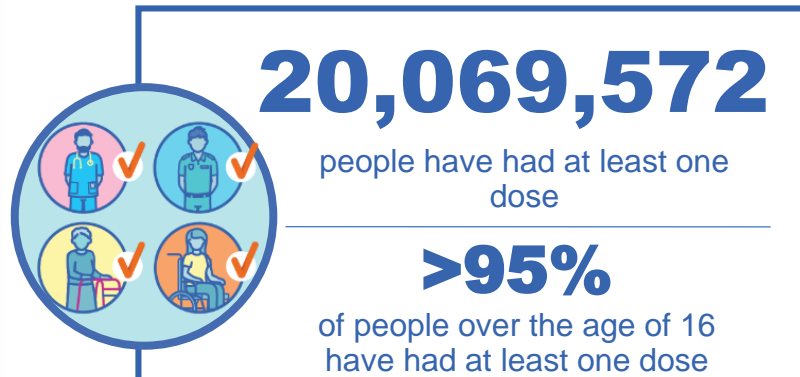
01 June 2022

Data as at:
31 May 2022

Total vaccine doses



59,232,193 total vaccine
doses administered nationally as at 31 May
+59,556 recorded in the last 24 hours

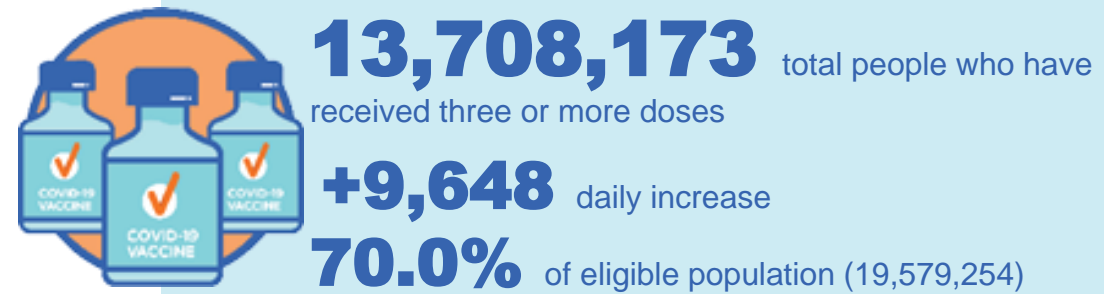
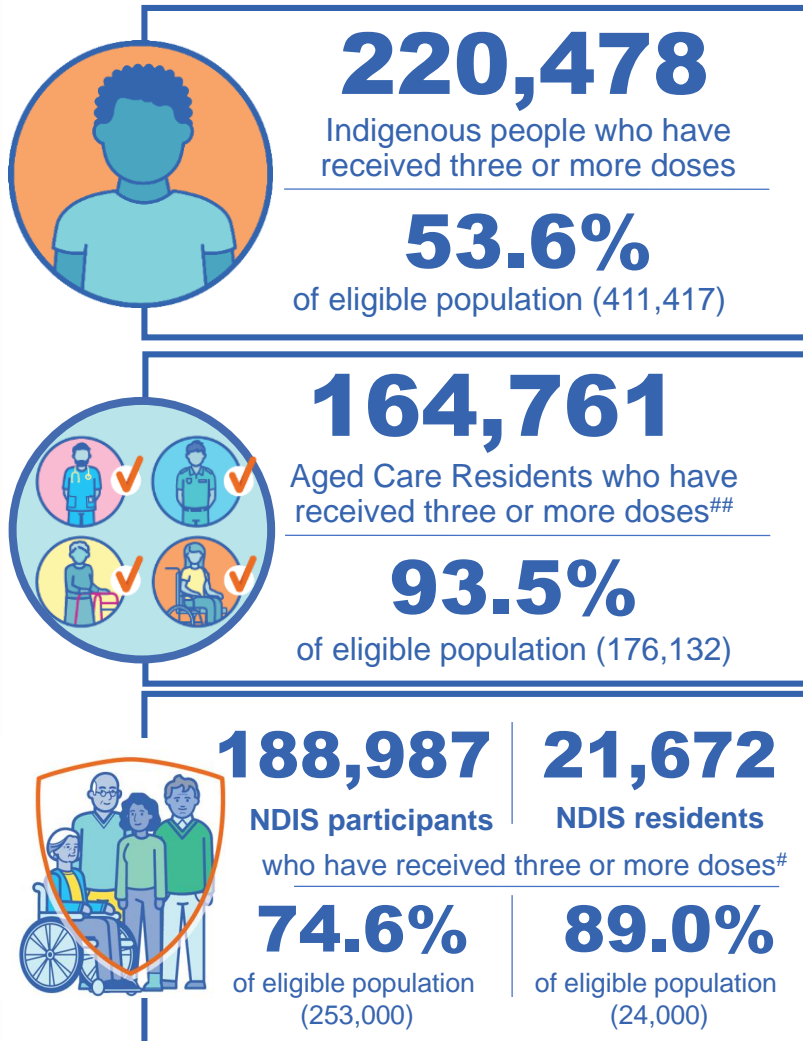


*Administration state breakdown indicates state in which a vaccine was administered

**Overall dose count includes instances of more than three doses per person in a small number of cases.

Source: Australian Immunisation Register

Booster Vaccinations



Data as at:
31 May 2022

	Number of People	Daily Increase	% of Eligible
NSW	4,180,957	2,885	67.3%
VIC	3,659,567	2,223	72.3%
QLD	2,372,746	1,698	63.1%
WA	1,686,736	1,339	83.3%
SA	976,285	864	73.4%
TAS	313,399	228	72.5%
ACT	271,318	131	78.4%
NT	129,742	182	77.5%

*People may belong to multiple groups and could be represented in the above breakdowns multiple times.
NDIS participants data as at 30 May 2022. ## Aged Care Residents data as at 31 May 2022.

Source: Australian Immunisation Register

117,423 doses administered to persons residing in other territories or with missing residential information

Winter / Fourth Doses

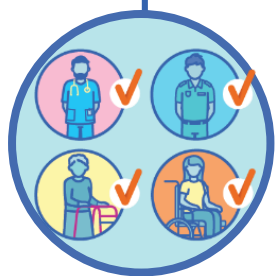
Data as at:
31 May 2022

Australia's COVID-19
Vaccine Roadmap



1,559,139 total people (16+) who have received four or more doses

+45,632 daily increase



1,391,737

People aged 65+ who have
received four or more doses

50.3%

of eligible population (2,766,821)

	Number of People 16+	Daily Increase
ACT	32,915	758
NSW	504,278	14,185
NT	6,936	212
QLD	296,332	9,044
SA	125,676	3,837
TAS	43,908	1,046
VIC	391,567	11,641
WA	150,231	4,701

7,296 doses administered to persons
residing in other territories or with
missing residential information

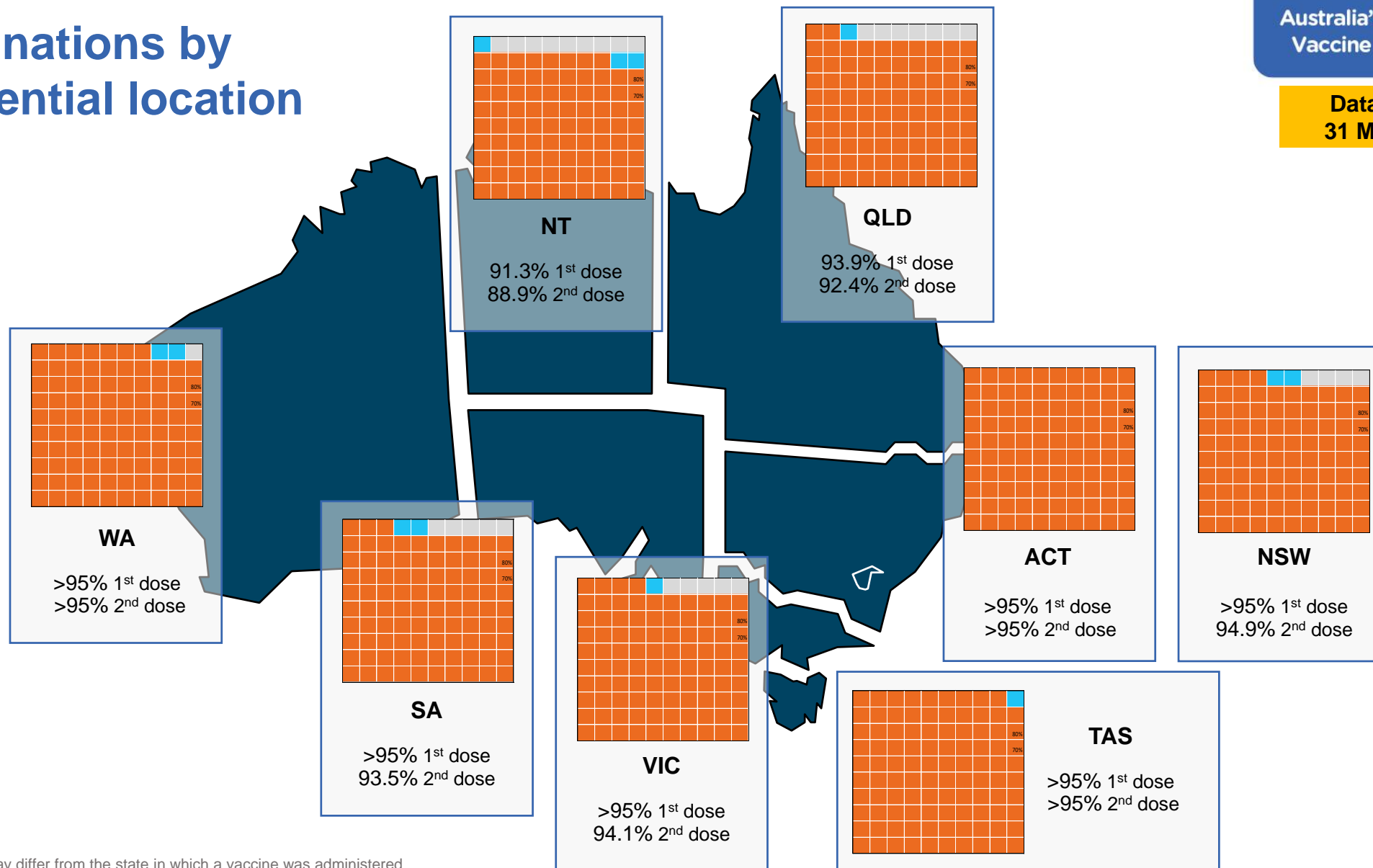
*People become eligible for a winter booster four months after their third dose.

Source: Australian Immunisation Register

Vaccinations by residential location

Australia's COVID-19
Vaccine Roadmap

Data as at:
31 May 2022



*Residential state may differ from the state in which a vaccine was administered

Commonwealth and Jurisdiction vaccine doses administered

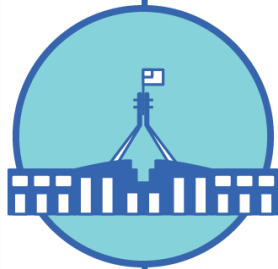
Data as at:
31 May 2022



59,232,193 total vaccine
doses administered nationally as at 31 May
+ 59,556 recorded in the last 24 hours



21,197,916
doses administered by state
and territory facilities
+ 4,980
recorded in the last 24 hours



38,034,277
doses administered by
commonwealth facilities
+ 54,576
recorded in the last 24 hours

36,734,594 total vaccine doses
administered in primary care settings
1,299,683 total vaccine doses
administered in aged care and disability
settings

NSW	Jurisdictions	Commonwealth
Cumulative	5,126,825	13,240,546
Daily increase	246	17,939

VIC	Jurisdictions	Commonwealth
Cumulative	6,104,671	9,450,556
Daily increase	1,642	13,264

QLD	Jurisdictions	Commonwealth
Cumulative	3,852,384	7,348,687
Daily increase	680	10,903

WA	Jurisdictions	Commonwealth
Cumulative	2,518,170	4,003,334
Daily increase	843	5,629

TAS	Jurisdictions	Commonwealth
Cumulative	624,942	715,723
Daily increase	177	1,148

SA	Jurisdictions	Commonwealth
Cumulative	1,829,254	2,278,391
Daily increase	625	4,346

ACT	Jurisdictions	Commonwealth
Cumulative	796,306	753,902
Daily increase	588	1,001

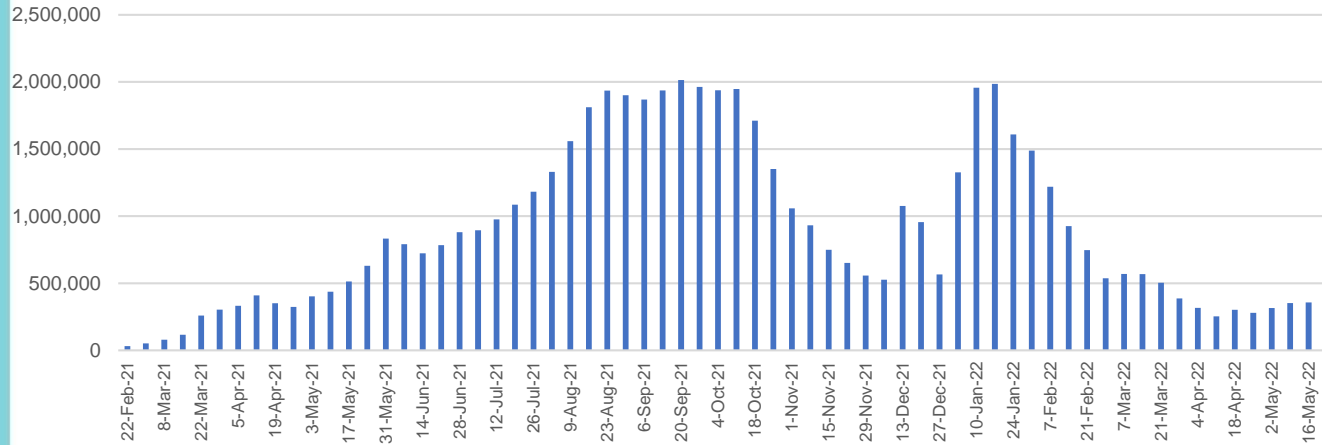
NT	Jurisdictions	Commonwealth
Cumulative	345,364	243,138
Daily increase	179	346

Vaccine milestone charts

Data as at:
31 May 2022

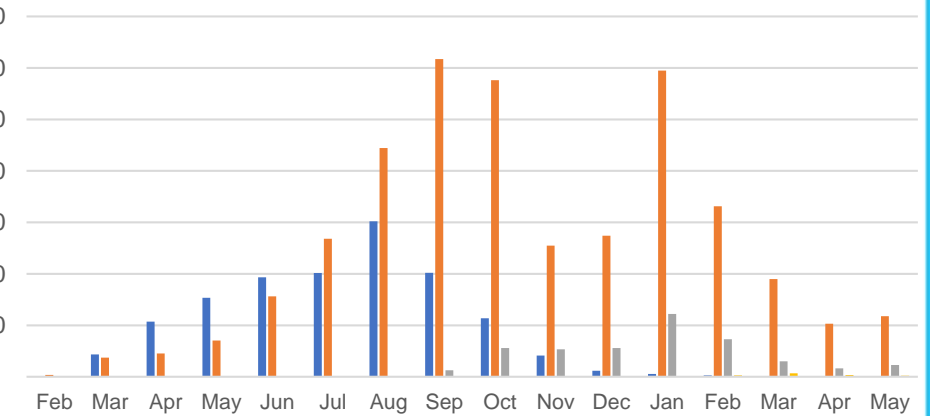
Australia's COVID-19
Vaccine Roadmap

Doses Administered by Week

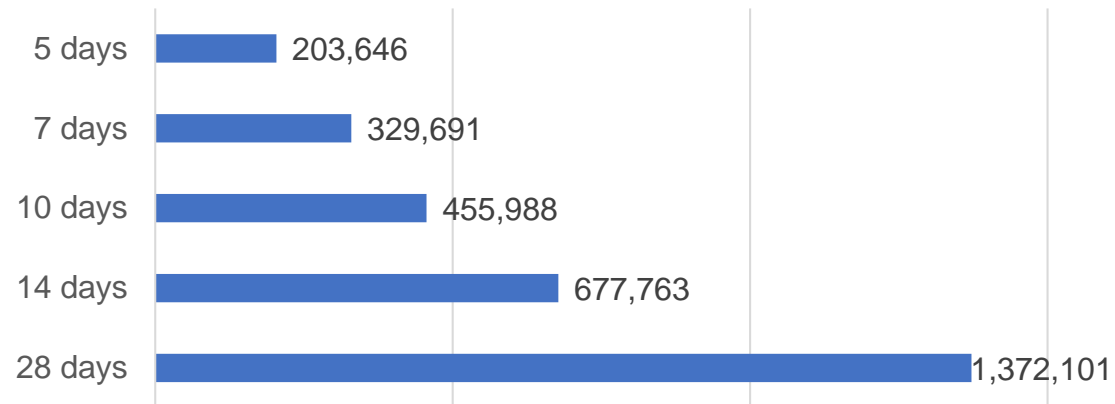


Doses by administration month and vaccine type

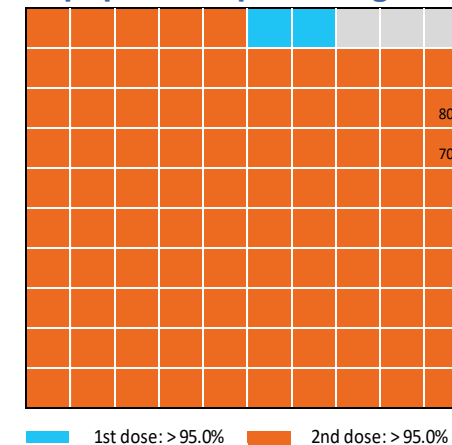
AZ - Vaxzevria Pfizer Moderna Novavax



Doses Reported



Eligible population percentage coverage



*Each square represents 1% of the national population.
Squares are filled as milestones are achieved.

*Sourced from the Australian Immunisation Register.

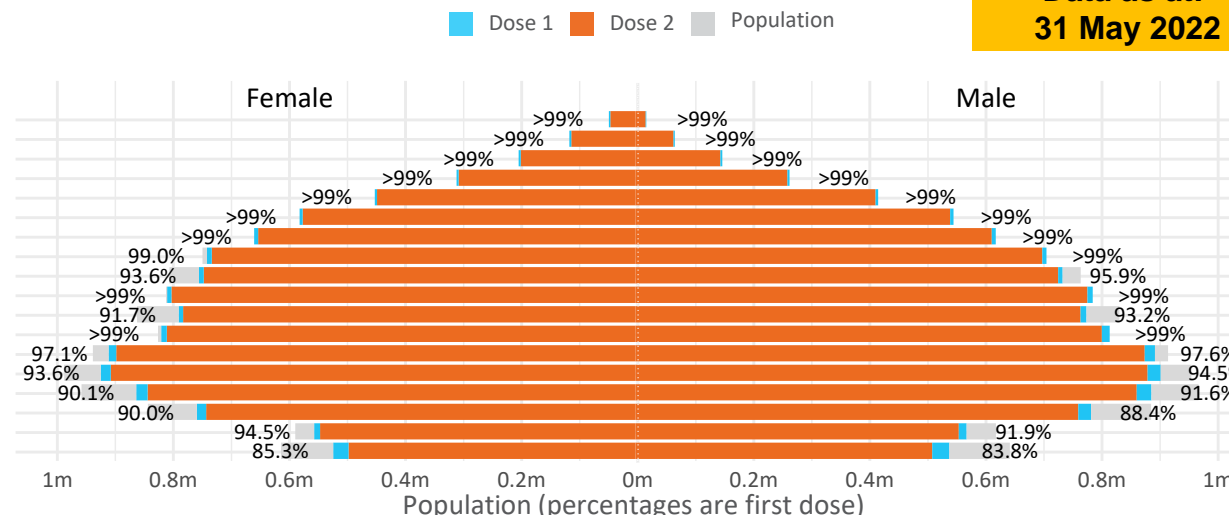
Data as at:
31 May 2022

Doses by age and sex

First and second doses by age and sex

	16+	50+	12-15	5-11
Dose 1	97.33% (20,069,572 doses / 20,619,959 people)	>99% (8,897,190 doses / 8,749,703 people)	84.58% (1,052,152 doses / 1,243,990 people)	52.64% (1,198,376 doses / 2,276,638 people)
Dose 2	95.71% (19,735,299 doses / 20,619,959 people)	>99% (8,790,276 doses / 8,749,703 people)	80.12% (996,675 doses / 1,243,990 people)	38.77% (882,625 doses / 2,276,638 people)

Age	Dose 1	Dose 2
95+	64,002 (>99%)	60,597 (>99%)
90-94	179,988 (>99%)	174,438 (>99%)
85-89	348,007 (>99%)	341,135 (>99%)
80-84	568,605 (>99%)	561,380 (>99%)
75-79	859,690 (>99%)	851,317 (>99%)
70-74	1,117,211 (>99%)	1,106,017 (>99%)
65-69	1,267,725 (>99%)	1,253,228 (>99%)
60-64	1,434,810 (>99%)	1,418,578 (98.7%)
55-59	1,475,762 (94.9%)	1,459,161 (93.8%)
50-54	1,581,390 (>99%)	1,564,425 (>99%)
45-49	1,551,318 (92.5%)	1,532,887 (91.4%)
40-44	1,621,737 (>99%)	1,597,701 (98.6%)
35-39	1,791,089 (97.6%)	1,759,037 (95.9%)
30-34	1,817,442 (94.5%)	1,775,699 (92.3%)
25-29	1,743,259 (91.4%)	1,695,782 (88.9%)
20-24	1,532,864 (89.5%)	1,493,146 (87.2%)
16-19	1,114,673 (93.2%)	1,090,771 (91.2%)
12-15	1,052,152 (84.6%)	996,675 (80.1%)

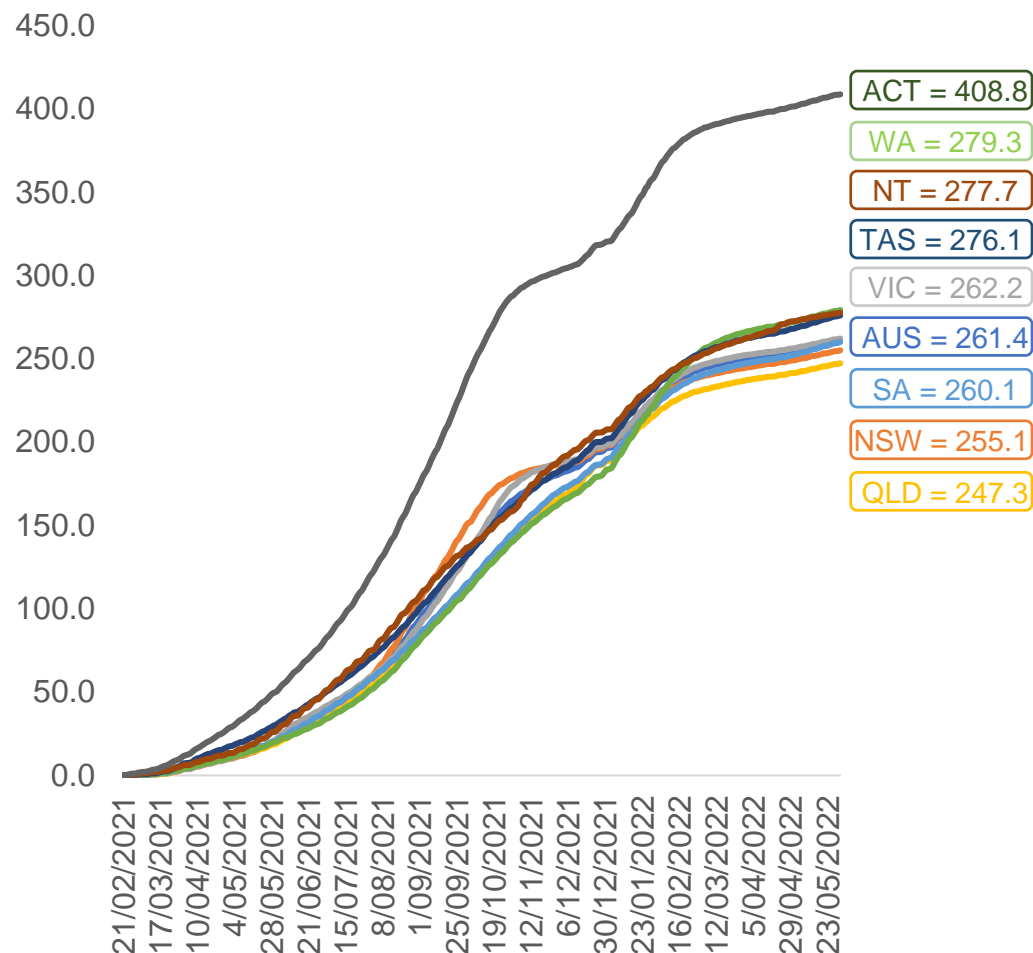


	AUS	ACT	NSW	NT	QLD	SA	TAS	VIC	WA
16 and over - dose 1	20,069,572	352,849	6,330,714	174,052	3,863,545	1,376,020	445,221	5,163,857	2,096,740
16 and over - dose 2	19,735,299	347,178	6,233,668	169,369	3,799,791	1,346,839	436,191	5,086,486	2,065,557
16 and over - population	20,619,959*	344,037	6,565,651	190,571	4,112,707	1,440,400	440,172	5,407,574	2,114,978
16 and over % with dose 1	97.33%	>99%	96.42%	91.33%	93.94%	95.53%	>99%	95.49%	>99%
16 and over % with dose 2	95.71%	>99%	94.94%	88.87%	92.39%	93.50%	>99%	94.06%	97.66%
5 to 11 - dose 1	1,198,376	31,909	357,682	13,219	207,917	84,005	28,576	326,039	141,250
5 to 11 - dose 2	882,625	27,047	268,599	8,551	147,560	61,973	22,891	241,273	100,161
5 to 11 - population	2,276,638	39,789	716,460	24,750	478,731	148,816	45,033	578,499	244,154
5 to 11 % with dose 1	52.64%	80.20%	49.92%	53.41%	43.43%	56.45%	63.46%	56.36%	57.85%
5 to 11 % with dose 2	38.77%	67.98%	37.49%	34.55%	30.82%	41.64%	50.83%	41.71%	41.02%
12 to 15 - dose 1	1,052,152	20,109	323,464	10,810	206,207	68,354	22,928	274,921	115,776
12 to 15 - dose 2	996,675	19,579	309,140	9,737	192,956	64,651	21,812	263,151	107,307
12 to 15 - population	1,243,990	19,693	390,330	13,060	270,146	82,747	26,308	308,611	132,869
12 to 15 % with dose 1	84.58%	>99%	82.87%	82.77%	76.33%	82.61%	87.15%	89.08%	87.14%
12 to 15 % with dose 2	80.12%	>99%	79.20%	74.56%	71.43%	78.13%	82.91%	85.27%	80.76%

*National population will not equal sum of listed jurisdictions due to a small number of people counted in national population residing in some 'other' territories. Sum of state doses will not add to national total as some records are unable to be geocoded to a State or Territory.
Doses sourced from Australian Immunisation Register, population from ABS ERP June 2020

Vaccinations by location

Cumulative total doses administered vs eligible state populations*

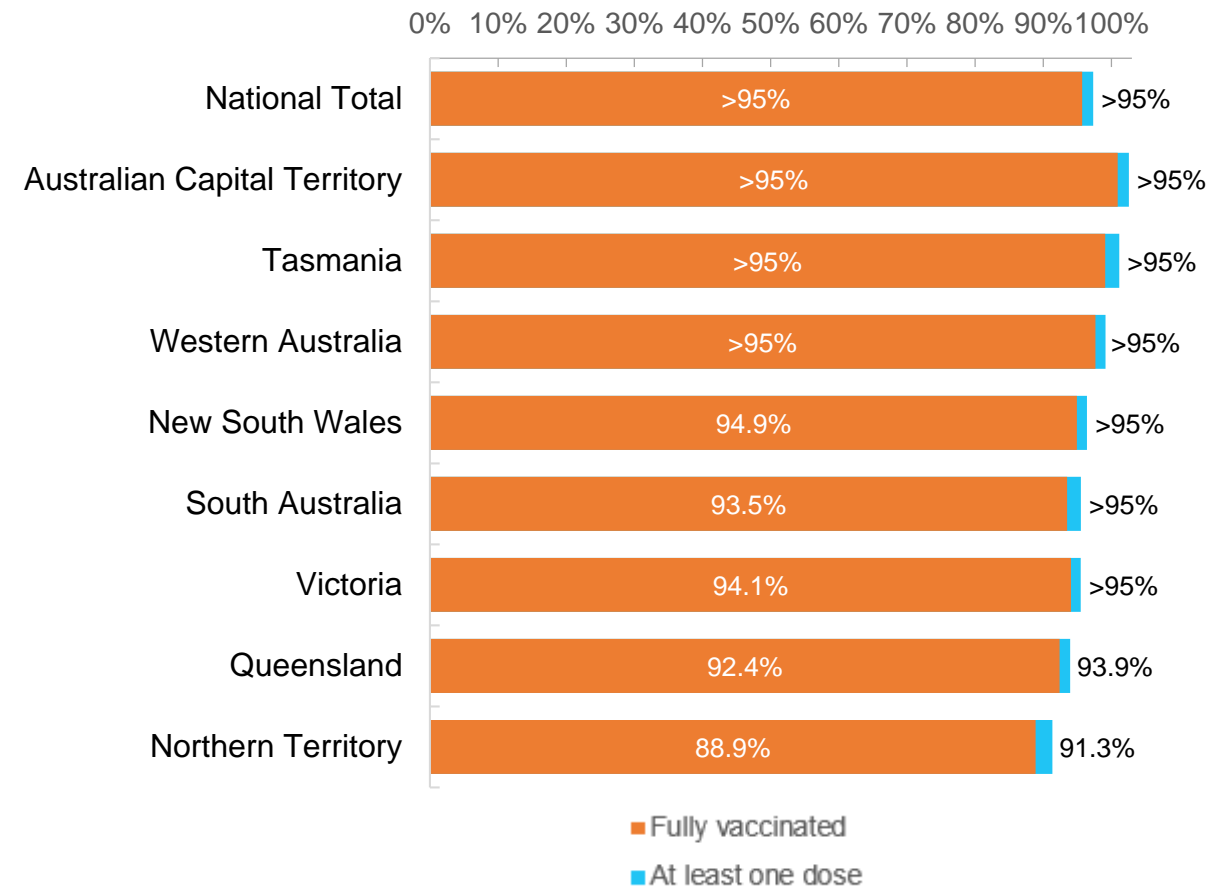


*Not an indication of percentage vaccinated, numbers will exceed 100 due to multiple doses required per person of the population. All doses are included for those aged 12 and above, and are based on vaccination provider location.

Data as at:
31 May 2022

Australia's COVID-19
Vaccine Roadmap

First and Second Doses by residential location



Aboriginal and Torres Strait Islander peoples

Number of people vaccinated

Data as at:
31 May 2022
Updated weekly

Australia's COVID-19
Vaccine Roadmap



442,855

people over the age of 16
have had at least one dose

84.9%

of people over the age of 16
have had at least one dose



424,192

people over the age of 16
are fully vaccinated

81.4%

of people over the age of 16 are
fully vaccinated



People aged 12 – 15 years

48,345

42,517

68.3%

At least one dose

60.0%

Fully vaccinated

178 Aboriginal community controlled health services (ACCHS)

0#

50

27

44

12

3

21

21

ACT

NSW

NT

QLD

SA

TAS

VIC

WA

Medicare Address State ^{##}	Individuals Dose 1	Individuals Dose 1 %	Individuals Dose 2	Individuals Dose 2 %
Australian Capital Territory	4,785	91.4%	4,663	89.0%
New South Wales	136,223	87.3%	133,150	85.4%
Northern Territory	41,526	89.6%	39,512	85.3%
Queensland	116,270	81.8%	110,848	78.0%
South Australia	20,049	80.5%	18,653	74.9%
Tasmania	13,961	88.8%	13,553	86.2%
Victoria	35,691	90.4%	34,911	88.5%
Western Australia	53,737	86.7%	49,937	80.6%
Unknown/Other Territories	20,613	69.7%	18,965	64.1%
Totals	442,855	84.9%	424,192	81.4%

Source: Australian Immunisation Register

*Identifying as Aboriginal and Torres Strait Islander is optional and the estimated population may be under reported.

**Includes all Aboriginal and Torres Strait Islander peoples who have received a vaccination, not limited to those administered in an ACCHS setting

#ACCHS in the ACT are currently operating as a Commonwealth Vaccine Clinics so not included to avoid double counting

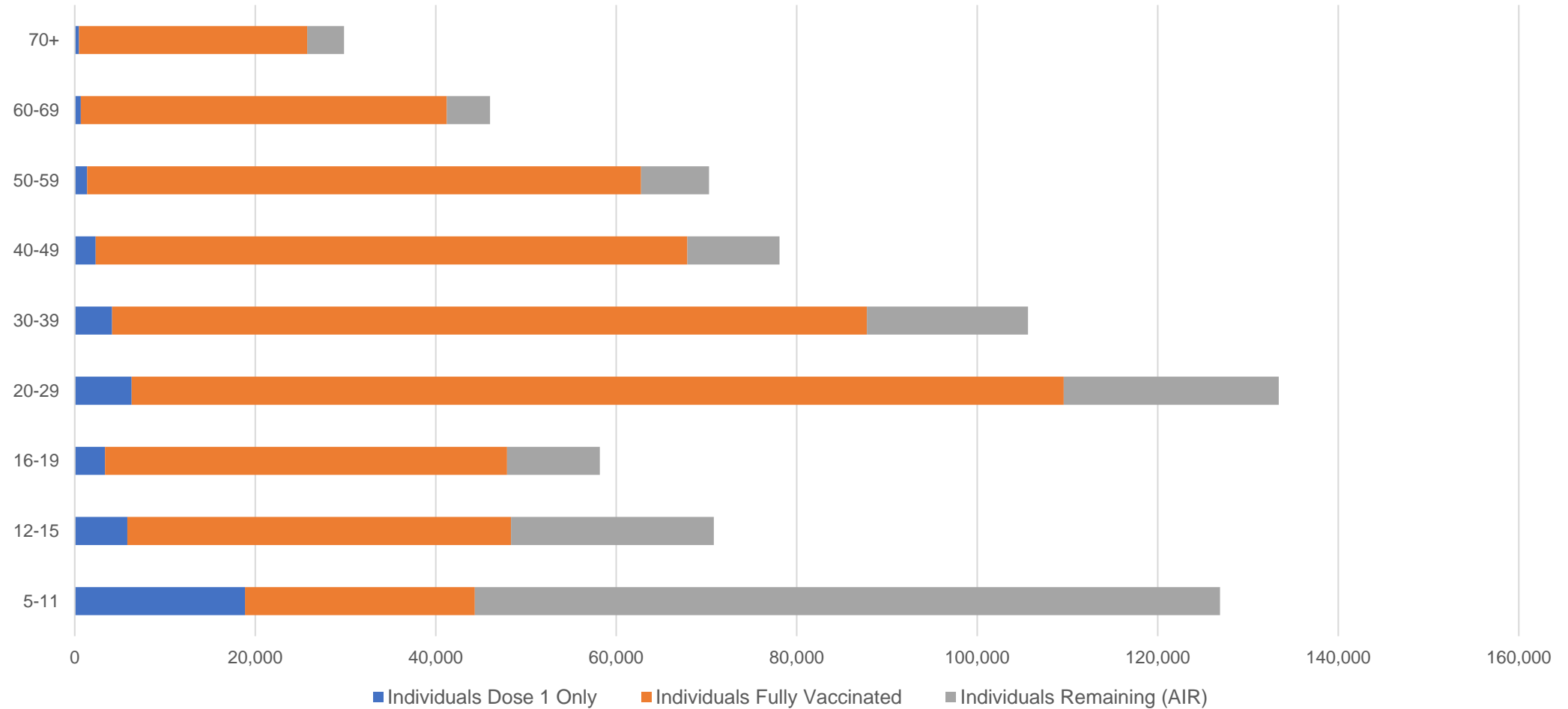
##The above table includes all identified Aboriginal and Torres Strait Islander people who are aged 16 and above by their state of residence.

Aboriginal and Torres Strait Islander peoples

Number of people vaccinated by age

Data as at:
31 May 2022
Updated weekly

Australia's COVID-19
Vaccine Roadmap



Source: Australian Immunisation Register

Commonwealth primary care

Data as at:
31 May 2022

Australia's COVID-19
Vaccine Roadmap



Primary care vaccine administration sites

5,720	128	178	3,602
GPs	CVCs	ACCHS	Pharmacies



36,734,594 total vaccine doses administered
primary care settings as at 31 May
+ 53,642 recorded in the last 24 hours

Primary care vaccinations by provider type

	Doses administered	Daily increase	7 day increase
General Practice* includes other Commonwealth	29,443,512	38,979	207,082
Pharmacy	7,291,082	14,663	79,166

NSW
12,674,864
(+17,483 daily increase)

VIC
9,122,026
(+13,057 daily increase)

QLD
7,066,227
(+10,569 daily increase)

WA
3,866,015
(+5,568 daily increase)

TAS
694,390
(+1,186 daily increase)

SA
2,197,717
(+4,309 daily increase)

ACT
580,042
(+874 daily increase)

NT
218,485
(+320 daily increase)

314,828

doses administered to persons
residing in other territories or with
missing residential information

*General practice includes Commonwealth Vaccination Clinics, Aboriginal Community Health Centres, Royal Flying Doctor Service and other Commonwealth vaccination facilities

Source: Australian Immunisation Register

Data as at:
31 May 2022

Commonwealth aged care and disability doses administered



1,299,683 (+ 934 last 24 hours)

Total vaccine doses administered in aged care and disability facilities as at 31 May

Number of doses administered as part of the Commonwealth aged and disability care rollout

NSW
566,638
(+429 daily increase)

VIC
244,556
(+224 daily increase)

QLD
206,608
(+152 daily increase)

WA
109,945
(+26 daily increase)

TAS
23,527
(<10 daily increase)

SA
85,034
(<10 daily increase)

ACT
17,714
(+38 daily increase)

NT
7,656
(<10 daily increase)

38,005

doses administered to persons
residing in other territories or with
missing residential information

*Sourced from the Australian Immunisation Register. Includes all persons vaccinated at participating residential aged care, disability and related industry settings.

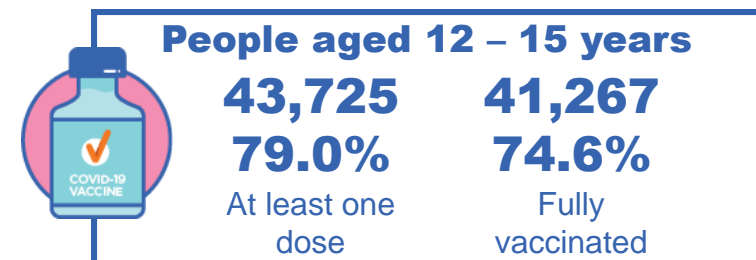
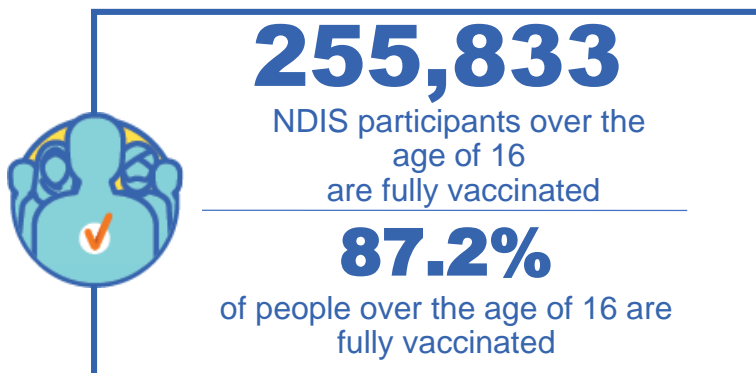
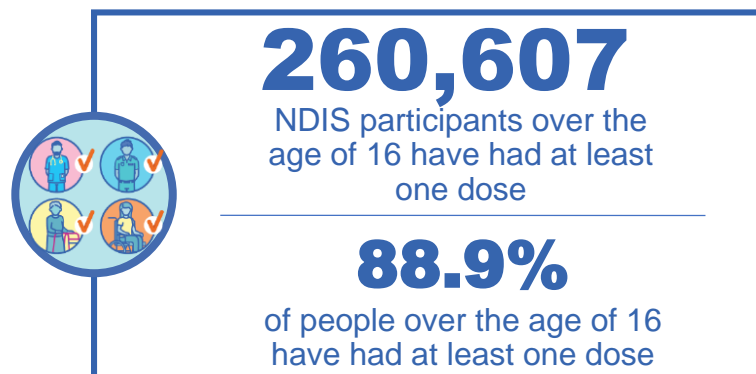
**State level breakdown indicates the residential location and may not align to the state in which the vaccination occurred.

Source: Australian Immunisation Register

National Disability Insurance Scheme (NDIS) reported vaccinations

Data as at:
26 May 2022
Updated weekly

Australia's COVID-19
Vaccine Roadmap



NDIS participant vaccinations

	People aged 16+ with at least one dose	People aged 16+ fully vaccinated	% People aged 16+ with at least one dose	% People aged 16+ fully vaccinated
ACT	4,920	4,852	90.7%	89.5%
NSW	79,886	78,583	89.0%	87.6%
NT	2,258	2,190	79.1%	76.8%
QLD	51,505	50,533	87.5%	85.9%
SA	21,307	20,800	86.9%	84.8%
TAS	6,526	6,373	88.8%	86.7%
VIC	69,309	68,130	90.0%	88.5%
WA	24,896	24,372	90.4%	88.5%
National	260,607	255,833	88.9%	87.2%

Source: Linkage between National Disability Insurance Agency data and the Australian Immunisation Register. Total NDIS participant numbers as at 28 February. Australian Immunisation Register data as at 25 May. Includes all participants regardless of residence type.

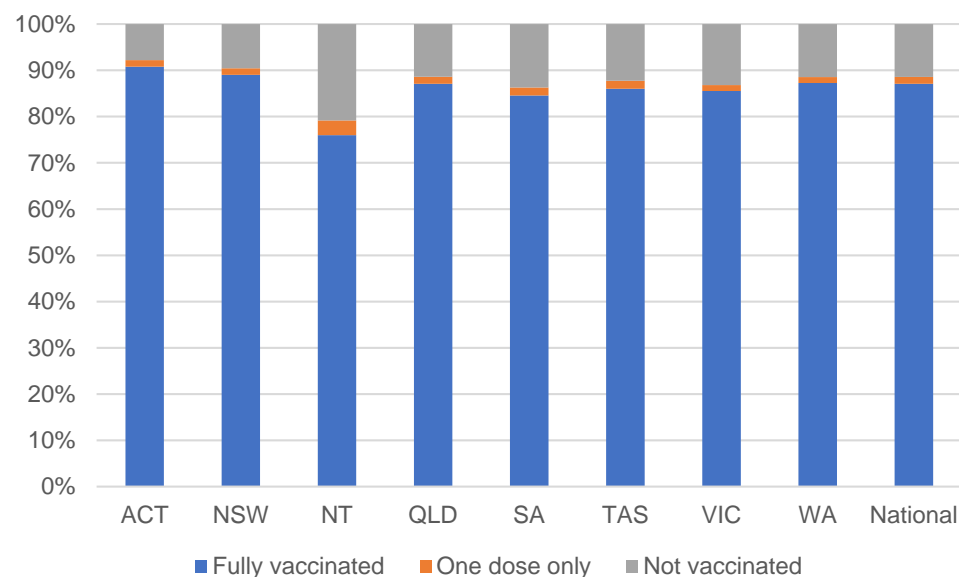
National Disability Insurance Scheme (NDIS) reported vaccinations

Data as at:
26 May 2022
Updated weekly

Australia's COVID-19
Vaccine Roadmap

NATIONAL	Total people with at least one dose	People fully vaccinated	Total number of individuals in cohort	% People with at least one dose	% People fully vaccinated
NDIS participants living in disability accommodation	20,762	20,425	23,352	88.9%	87.5%

NDIS participants in disability and aged care accommodation



Source: Linkage between National Disability Insurance Agency data and the Australian Immunisation Register. Includes participants residing in disability accommodation only.

Source: Total NDIS participant numbers as at 28 February. Participant data as at 24 May. Australian Immunisation Register data as at 25 May. Worker data as at 26 May.

NDIS workforce vaccinations

	NDIS workers with at least one dose	NDIS workers fully vaccinated	% NDIS workers with at least one dose	% NDIS workers fully vaccinated
NSW	126,495	120,487	98.3%	93.6%
VIC	117,331	113,969	98.3%	95.5%
QLD	70,932	69,987	97.7%	96.4%
WA	34,530	33,014	98.8%	94.4%
SA	35,910	33,756	98.6%	92.7%
TAS	10,944	10,696	99.0%	96.8%
ACT	12,301	12,277	99.7%	99.6%
NT	3,854	3,708	99.6%	95.9%
TOTAL	412,297	397,894	98.3%	94.9%

Source: the NDIS Commission has established a requirement for registered NDIS providers who provide intensive disability support services to report on the vaccination status of workers they employ, or otherwise engage, to deliver NDIS-funded supports and services, and who are required to be vaccinated in accordance with in-force state and territory public health orders. The statistics reflect data reported to the NDIS Commission by registered NDIS providers and should be considered indicative and subject to change

Note: Some registered NDIS providers are yet to report on the vaccination status of their workforce. The NDIS Commission is working with those providers around reporting requirements.

Remaining workers not included include those exempt from vaccination requirements, workers whose vaccination status is not yet verified by the provider (such as workers on leave) and provider reporting anomalies.

Residential aged care vaccination rollout

Residential aged care facilities status

176,160

People fully vaccinated

177,559

People with at least one dose

Australia's COVID-19 Vaccine Roadmap

Data as at:
26 May 2022
Updated weekly

Aged care resident vaccinations



Aged care worker vaccinations

Jurisdictions	Total workers with at least one dose	Workers fully vaccinated	% Workers with at least one dose	% Workers fully vaccinated
NSW	77,045	77,037	99.8%	99.8%
VIC	68,568	68,567	98.8%	98.8%
QLD	47,850	47,845	99.5%	99.4%
SA	27,008	26,994	99.2%	99.1%
WA	24,625	24,621	100.0%	100.0%
TAS	7,598	7,596	100.0%	100.0%
NT	882	882	100.0%	100.0%
ACT	2,943	2,943	100.0%	100.0%
Total	256,519	256,485	99.4%	99.4%

Source: My Aged Care Portal vaccination progress

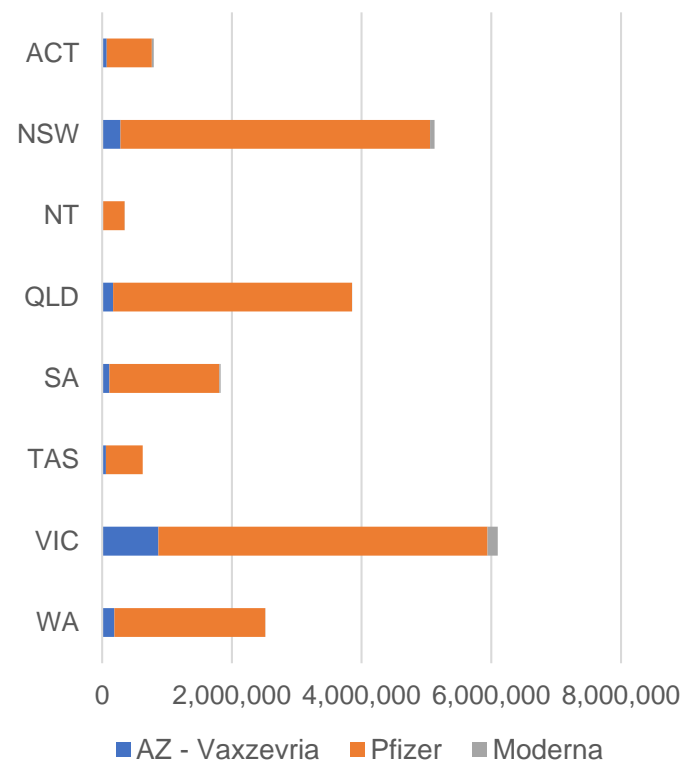
*Status updates are provided by facilities at least once per week. Reporting is updated Monday to Friday to encompass different facility updates being made on different days.

Data is sourced directly from Aged Care Service Providers and is not drawn or closely aligned with data from AIR due to inconsistencies and potential lags in uploading of records.

Data as at:
31 May 2022

Jurisdiction administered

Total vaccine doses administered in State and Territory clinics as at 31 May



21,197,916 total vaccine doses administered
in State and Territory clinics as at 31 May
+ **4,980** recorded in the last 24 hours
+ **36,844** recorded in the last 7 days

NSW
5,126,825
(+246 daily
increase)

VIC
6,104,671
(+1,642 daily
increase)

QLD
3,852,384
(+680 daily
increase)

WA
2,518,170
(+843 daily
increase)

TAS
624,942
(+177 daily
increase)

SA
1,829,254
(+625 daily
increase)

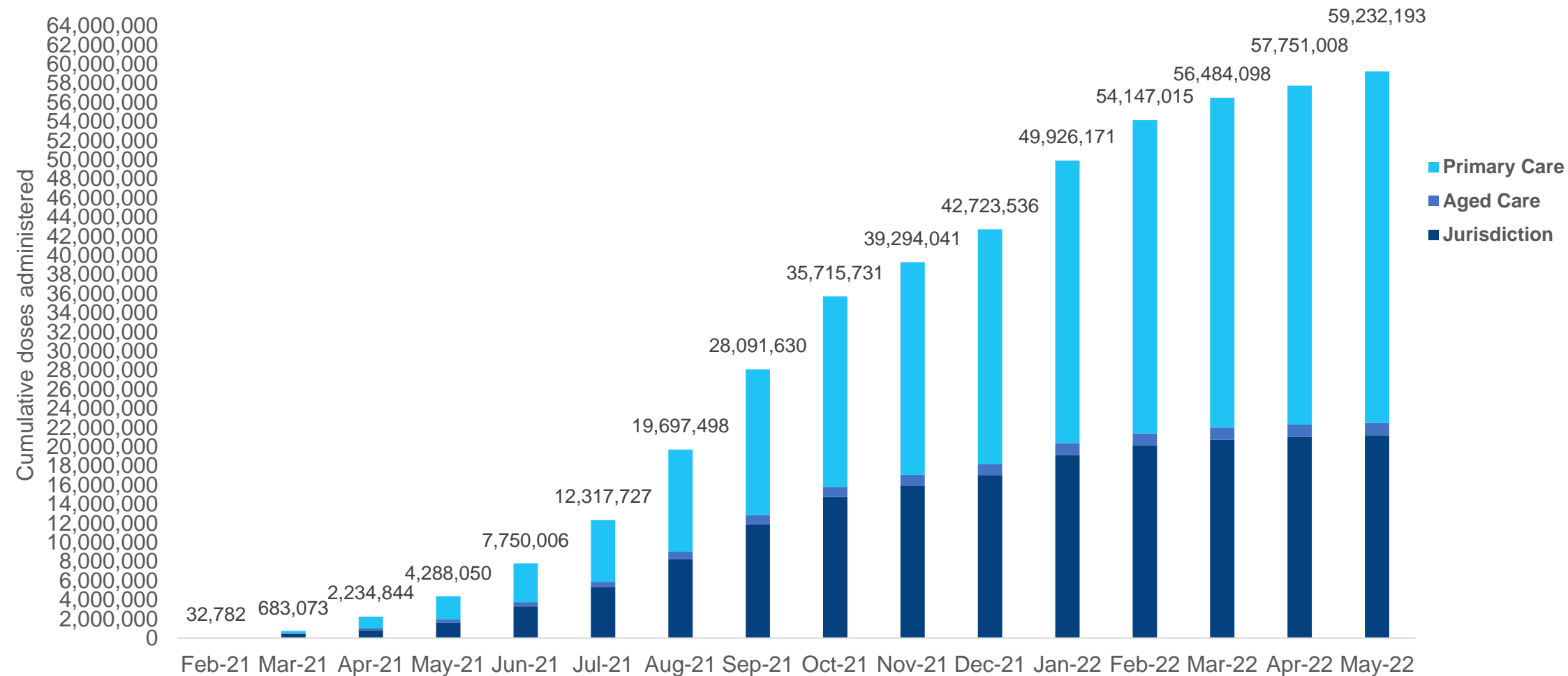
ACT
796,306
(+588 daily
increase)

NT
345,364
(+179 daily
increase)

*Sourced from the Australian Immunisation Register. Numbers are calculated as difference in daily cumulative reported numbers to allow for historical corrections.

Cumulative doses administered by channel

Data as at:
31 May 2022



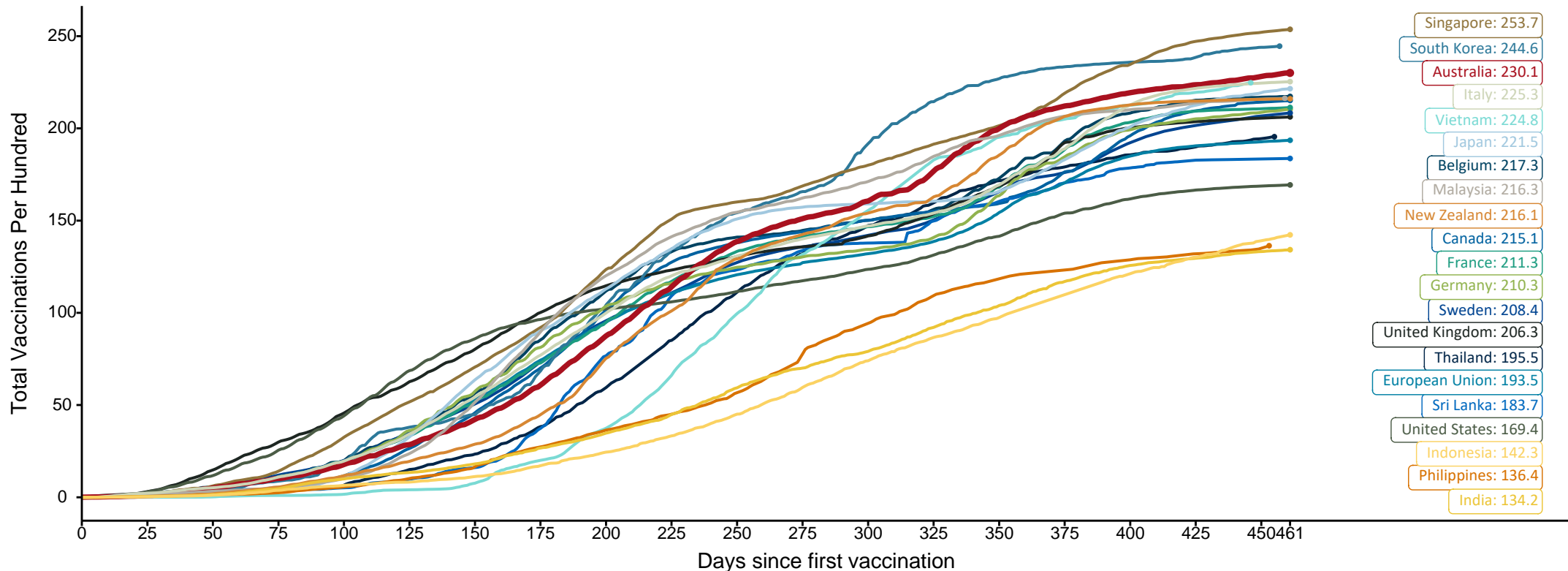
Source: Australian Immunisation Register

Doses at equivalent stages of rollout (Day 461)

Data as at:
29 May 2022
Updated weekly

The x-axis is truncated at the length of Australia's vaccination program. Countries with intermittent reporting have had their doses per 100 imputed to Australia's current stage of rollout. Israel excluded as it is beyond scale of the graph

Cumulative doses administered (29 May): **59,119,148**



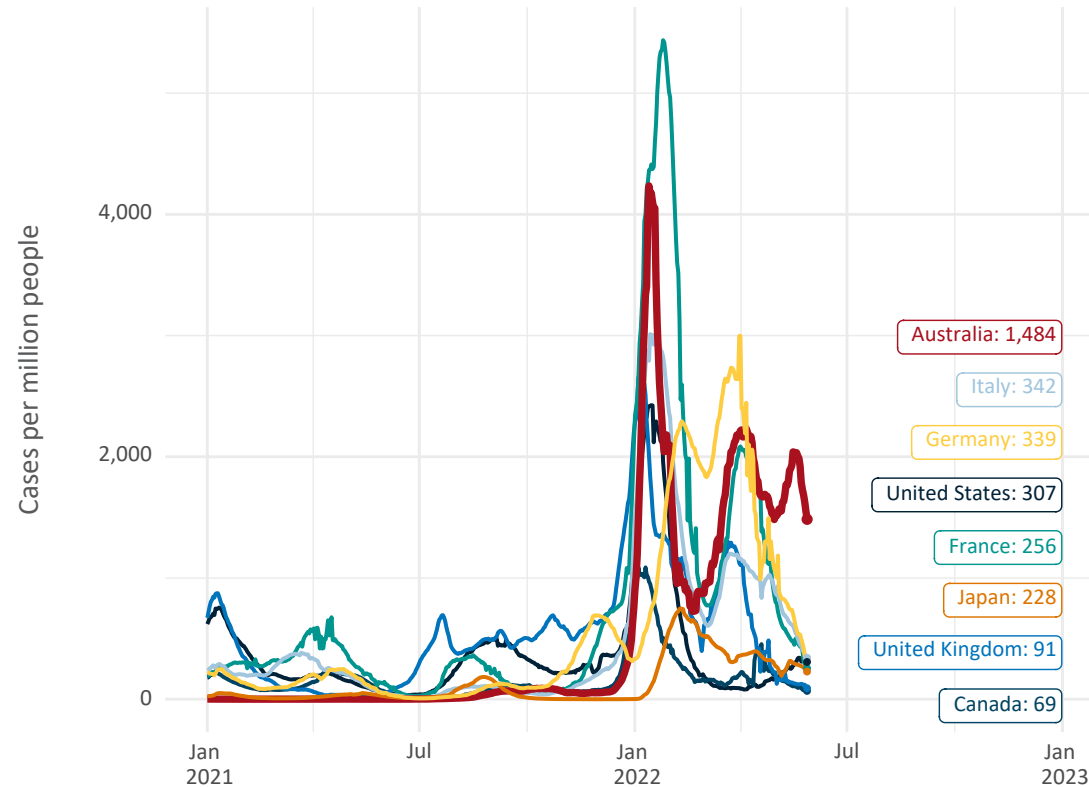
Note: From 11 January 2022, data for Australia includes all doses administered to people 5 and over. Prior to 11 January, data was for 12 and over.
Source: Department of Health (Australia), Our World in Data (international)
Latest data: 29 May

International data – COVID-19

Australia's COVID-19
Vaccine Roadmap

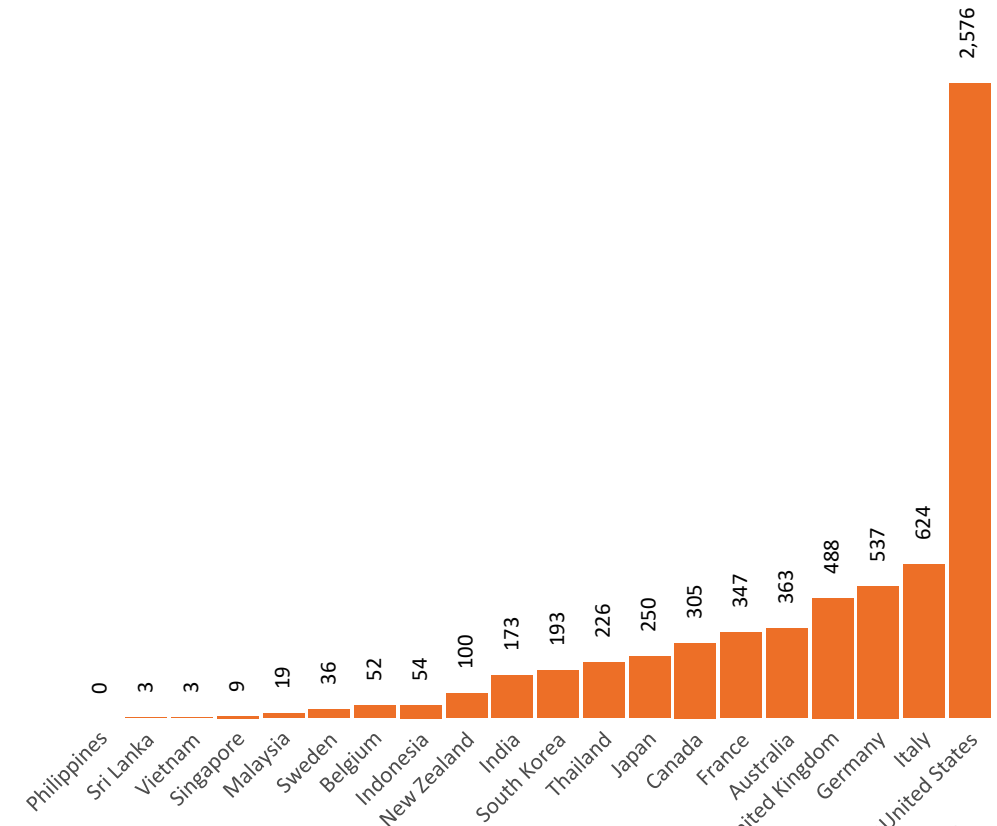
Data as at:
29 May 2022
Updated weekly

New daily cases per million since 2021, Australia and G7 countries
Smoothed - 7 day average



Source: OWID
Data downloaded: 30 May 2022 10:42
Latest data: 28 May 2022

COVID-19 deaths in past 7 days - Australia and select countries



Source: OWID
Data downloaded: 30 May 2022 10:42
Latest data: 28 May 2022